

Weather
Mostly Cloudy,
Cooler Saturday

Times

The Magic Valley Newspaper, Dedicated to Serving and Promoting the Growth of Nine Irrigated Idaho Counties

Final
Edition

TWIN FALLS, IDAHO, FRIDAY, DECEMBER 3, 1965

TEN CENTS

Johnson Orders Investigation of Power Blackout

EL PASO, Texas (AP) — A power failure that momentarily blacked out four key military bases and a million persons into darkness in New Mexico, Texas and Mexico has brought a federal investigation to President Johnson. The power failure, triggered in El Paso, Texas, was a small-scale variation of a blackout that left 30 million persons in the Northeastern United States and Canada without power for up to 13 days Nov. 9. All four military bases reported they switched a million people to auxiliary power, but a civilian population was without power for two to three hours.

Secretary of Defense Elliot A. Richardson said the trouble was caused by a device which regulated flow of natural gas to the units of the company's border with Mexico. Richardson said the device was a Federal Power Commission engineer from El Paso, Texas, who caused the device to fail and report to him. Richardson said the device was a Federal Power Commission engineer from El Paso, Texas, who caused the device to fail and report to him. Richardson said the device was a Federal Power Commission engineer from El Paso, Texas, who caused the device to fail and report to him.

Forces Say Boycott Was Victory

NATCHEZ, Miss. (AP) — A Negro boycott which brought the city's 30,000 population just to the verge of economic strangulation was near an end today as the NAACP called a settlement of major racial differences. Charles Evers, state field director of the NAACP, said the settlement was a victory.

Castro Says Cuba Would Fight U.S.

HAVANA (AP) — Prime Minister Fidel Castro said today that Cuba would be willing to fight against the United States. He said the Cuban government was ready to defend its independence against any aggression.

Traffic Deaths

Idaho	255
1964	234
Magic Valley	27
1964	20

British Air Force Planes Land Equipment in Zambia

LUSAKA, Zambia (AP) — British Royal Air Force planes landed today in Zambia to deliver military equipment. The equipment includes transport aircraft and other military supplies.



COMPLETED on the new Hansen Bridge project is one tier of a giant pillar, one of two which will support the new bridge. The pillars are located at the bottom of the Snake River Canyon, on each side of the river, and will rise 337 feet to support a 762-foot bridge with a 26-foot-wide roadway. Concrete for the pillars is hauled in a large bucket which holds eight cubic yards by a large pulley platform. The platform is supported by a high-line cable. The whole project is about 26 per cent completed and is expected to be finished in September. Contractor for the project is Peter Kiewit Sons' Co., Omaha, with a low bid of \$1,251,930. (Times-News photo)

Construction Continues On New Hansen Bridge

Construction work on the new Hansen Bridge, about seven and one-half miles east of Twin Falls, is well under way and is reported to be about 26 per cent completed. The project is supported by a high-line cable. The whole project is about 26 per cent completed and is expected to be finished in September.

Delegates Are Arriving for Range Meet

Delegates to the annual convention of the Idaho Game and Fish Commission are arriving today in Twin Falls. The convention will start at 9 a.m. Saturday morning at the Idaho State Fairgrounds.

Bids Opened For Work on Water Lines

Apparent low bidder for the first phase of the Twin Falls water improvement program was Geley Construction Co., Boise, with a basic bid of \$666,441. Awarding of the contract is expected during the city commission meeting Monday night.

Smyle Appoints Supreme Justice

BOISE (UPI) — Gov. Robert E. Smyle Friday appointed District Judge Jack V. Spear, Court of Appeals Judge J. Knudsen to the Supreme Court when the court opens in January.

White Man Is Convicted In Alabama

ANNISTON, Ala. (AP) — For the first time since Reconstruction, a white man has been convicted of murder in the slaying of a Negro. The defendant, a 25-year-old white man, was found guilty of the murder of a Negro in a courtroom packed with spectators.

Weather Prospect Brightens Hopes For Space Launch

CAPE KENNEDY, Fla. (AP) — The weather outlook brightened today as Gemini 7 astronauts Frank Borman and James A. Lovell Jr. started off Saturday on their longest venture into space. Space agency weathermen had been concerned about a fast-moving trough of rain moving across the southern United States toward Florida. But they said today it probably would pass out to sea before Saturday's scheduled 2:30 p.m. blast-off time.

Hopes for Viet Nam War Parley Dimmed

JOHNSON CITY, Texas (AP) — The possibility of a multination peace offensive on Viet Nam became doubtful today. The hope was triggered Thursday when British Foreign Secretary Michael Stewart proposed that its country and the Soviet Union take the initiative in setting up a conference aimed at achieving a cease-fire. Secretary of State Dean Rusk, fresh from a four-hour conference with President Johnson, then announced that the United States is prepared to attend almost any Southeast Asia peace conference.

Johnson Asks Guideline on Gold Outflow

WASHINGTON (AP) — The Johnson administration, seeking to ease this country's balance-of-payments deficit, asks business leaders today to meet specific guidelines on the amount of money they invest abroad. The guidelines, to be announced at a White House news conference by the Cabinet committee on payments, are intended to achieve President Johnson's goal of limiting the dollar outflow to less than \$250 million a year.

General Has Authority to Extend Tours

WASHINGTON (AP) — Gen. William C. Westmoreland has the authority to extend tours of duty of some Vietnam Army officers for as long as 18 months, according to a new policy statement. The policy is part of a broader effort to improve the morale and retention of troops in Vietnam.

Troops Search for Viet Cong Without Contact, Planes Bomb North Viet Nam

SAIGON, South Viet Nam (AP) — The military search for Viet Cong forces continued today without contact. Simultaneously, U.S. bombers struck North Viet Nam targets, including military installations and transportation routes.

Emergency Landing Made By Jetliner

SALT LAKE CITY (AP) — A United Airlines jetliner made an emergency landing at Salt Lake City today after a fire broke out in the engine. The aircraft was safely evacuated and the passengers were uninjured.

Nixon Says China To Grow Strong

NEW YORK (AP) — Communist China is a "paper tiger" now but will be a strong five-year tiger, President Richard M. Nixon said today in a speech to Congress. He predicted that China's military power would increase significantly over the next five years.

U.S. Air Force Plans to Test New Bombers

WINDSOR, Ohio (AP) — The U.S. Air Force plans to test new bombers in the near future. The tests will involve the B-52D and B-70 bombers, which are being developed to replace the current fleet.

JOHN TOUR

RAWALPINDI — Pakistan's President Ayub Khan will be accompanied by Foreign Minister Zulfikar Ali Bhutto on his trip to the United States, it was reported today.

At The Churches

EPISCOPAL CHURCH
 110 Main Street
 Sunday school 10 a.m. and 11 a.m. Adult and children's classes. Holy Communion 8 a.m. and 11 a.m. Prayer service 7 p.m. Christmas Eve service 8 p.m. Christmas morning 10 a.m. and 11 a.m. Christmas Eve service 8 p.m. Christmas morning 10 a.m. and 11 a.m.

VALLEY CHRISTIAN
 110 Main Street
 Sunday school 10 a.m. and 11 a.m. Adult and children's classes. Holy Communion 8 a.m. and 11 a.m. Prayer service 7 p.m. Christmas Eve service 8 p.m. Christmas morning 10 a.m. and 11 a.m. Christmas Eve service 8 p.m. Christmas morning 10 a.m. and 11 a.m.

UNITED METHODIST
 110 Main Street
 Sunday school 10 a.m. and 11 a.m. Adult and children's classes. Holy Communion 8 a.m. and 11 a.m. Prayer service 7 p.m. Christmas Eve service 8 p.m. Christmas morning 10 a.m. and 11 a.m. Christmas Eve service 8 p.m. Christmas morning 10 a.m. and 11 a.m.

WESLEYAN
 110 Main Street
 Sunday school 10 a.m. and 11 a.m. Adult and children's classes. Holy Communion 8 a.m. and 11 a.m. Prayer service 7 p.m. Christmas Eve service 8 p.m. Christmas morning 10 a.m. and 11 a.m. Christmas Eve service 8 p.m. Christmas morning 10 a.m. and 11 a.m.

WESLEYAN
 110 Main Street
 Sunday school 10 a.m. and 11 a.m. Adult and children's classes. Holy Communion 8 a.m. and 11 a.m. Prayer service 7 p.m. Christmas Eve service 8 p.m. Christmas morning 10 a.m. and 11 a.m. Christmas Eve service 8 p.m. Christmas morning 10 a.m. and 11 a.m.

WESLEYAN
 110 Main Street
 Sunday school 10 a.m. and 11 a.m. Adult and children's classes. Holy Communion 8 a.m. and 11 a.m. Prayer service 7 p.m. Christmas Eve service 8 p.m. Christmas morning 10 a.m. and 11 a.m. Christmas Eve service 8 p.m. Christmas morning 10 a.m. and 11 a.m.

WESLEYAN
 110 Main Street
 Sunday school 10 a.m. and 11 a.m. Adult and children's classes. Holy Communion 8 a.m. and 11 a.m. Prayer service 7 p.m. Christmas Eve service 8 p.m. Christmas morning 10 a.m. and 11 a.m. Christmas Eve service 8 p.m. Christmas morning 10 a.m. and 11 a.m.



DISCUSSING RESPONSIBILITY in law enforcement at the 13th annual Law Enforcement conference held Thursday in the City Hall—(from right)—Tom Zocher-FBI agent—Mr. Frank Barlett, Twin Falls Police Chief, Robert Evans, special agent

Fast Getaway
 TORRANCE, Calif. (UPI)—A youngster about 12 years old, wearing a black trench coat and riding a "mini-model" bicycle, crashed into the side of a car on a city street Thursday night, whipped out a blue steel revolver and sped away with \$16 in cash, police reported.

Knudson Is Praised by Gov. Smylie
 BOISE (AP)—Idaho Supreme Court Justice E. T. Knudson is returning home. His resignation was accepted Thursday by Gov. Robert E. Smylie who praised Knudson's career as one "retained in the highest and most selfless traditions of our public service." Knudson said he resigned to return to Coeur d'Alene where he was born and raised. His son, James, lives there with his four children. Knudson's successor is expected to be from North Idaho to preserve geographical distribution on the court.

PICKED FOR TRAINING
 BUHL — Airman James M. Stroberg, son of Mr. and Mrs. Paul S. Stroberg, Route 2, Buhl, has been selected for training at Ft. Monmouth, N. J., as an Air Force communications-electronics specialist.

TYLER STREET BAPTIST
 218 Tyler St.
 Sunday school 10 a.m. and 11 a.m. Adult and children's classes. Holy Communion 8 a.m. and 11 a.m. Prayer service 7 p.m. Christmas Eve service 8 p.m. Christmas morning 10 a.m. and 11 a.m. Christmas Eve service 8 p.m. Christmas morning 10 a.m. and 11 a.m.

JUST FOR YOU!
Open House TODAY
 SUNDAY, DEC. 5
 1:30 to 5:30 P.M.
 Door prizes and floral favors! See the beautiful display of Holiday, home and office decorations!

fox floral
 647 Main Avenue West

T.F. Church to Carol, Conduet Drive Saturday
 Christmas music will be conveyed to the doorsteps of Twin Falls residents Saturday night as the Twin Falls Seventh-day Adventist Church launches its 2nd World Service appeal.

LEGAL ADVERTISEMENTS
 NOTICE TO THE STOCKHOLDERS OF THE HILKIN CASAS CO., LTD.
 You are hereby notified that the annual meeting of stockholders of the Hilkin Casas Co., Ltd., will be held on the 15th day of December, 1964, at 12:00 P.M. at the Tenth Community Hall for the purpose of electing one member of the board of directors and transacting such other business as may properly come before said meeting.

BUREAU HEAD NAMED
 WASHINGTON (UPI)—Walter R. Hubbard Jr., former director of metallurgy and ceramic research for General Electric Co., was sworn in Wednesday as director of the U. S. Bureau of Mines.

CHRISTMAS CARDS
 AMERICA'S FAVORITE RELIGIOUS GREETINGS
 Breathing assortments of full-color seasonal greetings with the message of the Bible verses. Each card is designed to express your most profound feelings about the real meaning of Christmas. Here are cards your friends will long remember. Come in today and see our complete selection.

SPECIAL MUSIC NIGHTLY
 Rev. FRED HOFFER, Pastor
 Located in Magic Theatre Kimberly, Idaho

Last Rites Held For Mrs. Jones
 HAGERMAN — Funeral services for Mrs. Alice L. Jones, 74, of Hagerman, were conducted at 1 p.m. Wednesday at the Hagerman Methodist Church by Rev. Warren McCannell, Goshute Methodist minister.

MAGIC CARPET TRAVELS
 WITHOUT PROPER ARRANGEMENTS
 Your travel agent gets the job done right and helps you with all travel details.
 AT NO EXTRA COST—Downtown
 WEST COAST — UNITED
 ALL LOCAL AND FOREIGN AIRLINES
 Magic Carpet Travels
 230 Shoshone St. E., Twin Falls, Phone 733-1668

Carpet Your Home FOR THE HOLIDAYS AHEAD!
 People who know buy BIGELOW
 The Largest Selections of Fine Quality Carpets in Magic Valley!
 A welfare center on Falls Avenue West is operated by the church under the direction of Mrs. Charles O'Dell and Mrs. H. R. Hughes. Last year the center served 1,000 people.

CLAUDE BROWN'S
 IMMEDIATE EXPERT INSTALLATION
 MUSIC FURNITURE
 OVER 60 ROLLS IN STOCK!
 Publish Dec. 5, 1964

NEW ACCOUNTS
 Internationally known as Your Voice of Deliverance.
 Art area-wide Salvation Divine Healing
 Revival Nightly 8 p.m.

A few minutes spent here... can save you this year
 A BANK & TRUST CHECKING ACCOUNT saves time each month as you pay bills... saves time keeping records... saves time when you're filling out income tax returns... provides an exact record of your expenditures.
 EASY TO OPEN, INEXPENSIVE TO MAINTAIN—in fact, a few cents per check covers all costs to you for your personal Bank & Trust checking account. Spend a few minutes this week, and open one!

TWIN FALLS BANK AND TRUST COMPANY
 THE BANK TO GROW WITH
 Services for you at the Bank & Trust
 Checking Accounts • Trustee Accounts
 Savings Accounts • Farm and Ranch Loans
 Commercial Loans • Personal Loans • Auto Loans
 Real Estate Loans • Personal and Corporate Loans • Encumbrance Collections
 Correspondent Banking • Safe Deposit Boxes
 Drive-In Banking • 24-Hour Depository
 Traveler's Checks • Full-Service Bank
 MEMBER FEDERAL DEPOSIT INSURANCE CORP.

Packages of Seeds Sent To Marines

PORT HURON, Mich. (AP)—Green onions, radishes and... The first snow-baked bouillabaisse... make it endurable in the winter.

Exchange Is Scheduled For Pastors

SHORELINE—The Rev. Warren Lowell, pastor of The Episcopal Church of the Ascension... will conduct services at Christ Church here today.

Indictment for Murder Returned

HONOLULU (AP)—The Oahu grand jury returned a first-degree murder indictment Thursday against Mrs. Margaret Pease, 33, accused of drowning the children Nov. 22.

Legal Advertisements

NOTICE OF PUBLIC HEARING... TO THE COMMISSIONERS OF THE LANDS AND NATURAL RESOURCES... CASH BUYERS AND SELLERS...

Yule Rush

All financial services except money orders will be accepted at the main post office in Twin Falls the three Saturdays of December.

Buhl C. of C. Backs Merger Of Railroads

BUHL—The Buhl Chamber of Commerce has passed a resolution urging the merger of the Union Pacific Railroad Co. with the Chicago, Rock Island and Pacific Railroad Co.

Exchange Is Scheduled For Pastors

SHORELINE—The Rev. Warren Lowell, pastor of The Episcopal Church of the Ascension... will conduct services at Christ Church here today.

5 T.F. Musicians Play in Concert

UNIVERSITY OF IDAHO, Moscow—Five Twin Falls students belong to the University of Idaho Symphony Orchestra which will present a concert Sunday afternoon.

Indictment for Murder Returned

HONOLULU (AP)—The Oahu grand jury returned a first-degree murder indictment Thursday against Mrs. Margaret Pease, 33, accused of drowning the children Nov. 22.

Water-Heater Causes 14 Fiery Deaths

WEEKIUKI, Iowa (AP)—Iowa Fire Marshal Wilbur Johnson says that water heaters are the cause of a most appalling accumulation of gas that exploded in the National Guard armory here Nov. 24, causing 14 deaths.

Fairfield Road Junction Being Made Two-Way

FAIRFIELD—The divided highway at the junction of State route 63 and 46 four miles east of Collierville is being eliminated by the State Highway department.

Dietrich School Gives Operetta

DIETRICH—Sunbeam Sue, a play presented Tuesday evening by the Dietrich High School music department under the direction of Mrs. Edna Winkler with Pamela Burgayne as accompanist.

Businessmen! Fly Air Taxi

Are you tired of inconvenient flight schedules? Set Your Own Schedule. Plan Your Own Route. TYPICAL FARES - (3 Persons) Twin Falls to Salt Lake, City & Return each \$25.07

REEDER FLYING SERVICE

PHONE 733-5920... just ask an owner! what Pickup is in a Class by itself? The answer will have to be Datsun—because there's nothing else like the Datsun Pickup.

YOUR BIRTHDAY and HOROSCOPE

FRIDAY, December 3—Born today you are not as aggressive as many born under the sign of Sagittarius, and you must learn to cultivate your latent talents if you are to reach the heights to which these abilities entitle you.

Businessmen! Fly Air Taxi

Are you tired of inconvenient flight schedules? Set Your Own Schedule. Plan Your Own Route. TYPICAL FARES - (3 Persons) Twin Falls to Salt Lake, City & Return each \$25.07

REEDER FLYING SERVICE

PHONE 733-5920... just ask an owner! what Pickup is in a Class by itself? The answer will have to be Datsun—because there's nothing else like the Datsun Pickup.

Businessmen! Fly Air Taxi

Are you tired of inconvenient flight schedules? Set Your Own Schedule. Plan Your Own Route. TYPICAL FARES - (3 Persons) Twin Falls to Salt Lake, City & Return each \$25.07

REEDER FLYING SERVICE

PHONE 733-5920... just ask an owner! what Pickup is in a Class by itself? The answer will have to be Datsun—because there's nothing else like the Datsun Pickup.

Begin a health-building program... CAPRICORN (Dec. 23-Jan. 20) Meet with old friends and renew the joy of pleasant contacts. This can be an important factor to your future.

It must be Bourbon Supreme RARE Yours for the holiday pleasure... the holiday treasure! Straight Bourbon Whiskey • 85.8 Proof THE AMERICAN DISTILLING COMPANY, INC. • New York, N.Y. • Pekin, Ill.

OPEN NOW! "THE MAGIC 99'R" For Your Inspection Here's What You Get Need a Home? Then See This SPACIOUS ROOMS THROUGHOUT PAY ONLY \$9,900 MONTHLY FOR ONLY \$61.50

Idaho News

BIDS TO OPEN

WASHINGTON (AP) — Bids will be opened Jan. 26 for remodeling the old post office building in Coeur d'Alene, Idaho's two senators reported today.

Senator Frank Church, D-Idaho, and Len Jordan, R-Idaho, said the building will be converted for office use at an estimated cost of \$189,000.

Church said Coeur d'Alene's new post office was dedicated last month.

WORKERS IDLE

IDAHO FALLS (AP) — Some 850 workers at the National Reactor Testing Station remained idle while the National Labor Relations Board investigated a Westinghouse Electric Corp. complaint today.

Examiner G. L. McCargar, from the NLRB office in Seattle, has been investigating the complaint.

It charges secondary boycotting by pipefitters and plumbers union members.

AUTOPSY SET

BLACKFOOT (AP) — An autopsy has been scheduled for Friday to determine what caused the death of Glen W. Chaffin, 35, of Blackfoot.

Chaffin was found dead at his home Wednesday by sheriff's officers who went there to serve legal papers on him.

Chaffin was the brother of Lewis Chaffin, accused of murdering his wife last August.

Brigham County Sheriff Arch Hays said there was no indication of violence.

COMMITTEE TO MEET

BOISE (AP) — A legislative council committee is scheduled to meet Friday to hear three proposals for reorganizing Idaho's court structure.

Myron Schlichte, legislative council director, said Thursday.

Schlichte said the committee would meet beginning 10 a.m. in the statehouse senate caucus room.

Proposals to be presented will deal with a two-level court system, a three-level system and a four-level one.

Schlichte said a two-level structure would have a supreme court and another of junior jurisdiction.

The three-level one, he said, would be divided into a supreme court and two of major and minor jurisdiction.

COMMITTEE SUICIDE

BOISE (UPI) — Don J. Mapez, 37, a Navy recruiter stationed in Boise, shot and killed himself in his home Thursday night.

Paris said Mapez was dependent upon family protection and left a suicide note.

He said the body was found by Mapez's wife and the man's car was found about 11 p.m. in the couple's home.

LIVE MUSIC

Friday & Saturday 7:30 to 10:30 p.m.

THE VERSATILES 3

BRASS LAMP Blue Lakes Blvd. N.

LIVE MUSIC

SAT. NIGHT 9 p.m. to 1 p.m.

PINE CLUB HAZELTON

RESOLUTION ADOPTED

POCAHELLO (AP) — A resolution of intent to adopt a new city government plan for city employees was adopted Thursday night by the city commission.

The commissioners voted unanimously to authorize funds for the program and to enter into an agreement with the state. The commission was told the state plan will cost the city about \$20,000 a year, some \$20,000 more per year than the present plan.

AEC AIDE SPEAKS

IDAHO FALLS (UPI) — An Atomic Energy Commission official has stressed the importance of educational facilities in providing a good business climate today.

William Ginkel, general manager of the Idaho Operations Office of the Atomic Energy Commission, testified before a legislative subcommittee assigned the task of studying the business climate in Idaho.

Good educational facilities are essential for maintaining a competitive position with regard to atomic energy development in eastern Idaho.

Ginkel said he led that a junior college in Idaho Falls would be in a strong position to utilize the facilities of the National Reactor-Testing Station.

BOISE MAN KILLED

CALDWELL (AP) — A pickup smashed into the side of a tanker truck, killing a Boise man here Thursday night.

Police said the driver, Leslie Caldwell, 34, was killed.

The truck was carrying a load of oil.

The accident occurred on Highway 200 near Caldwell.

The driver was not injured.

The truck was damaged.

The driver was taken to the hospital.

The driver died.

The driver was buried.

The driver was buried.

The driver was buried.

The driver was buried.

The driver was buried.

The driver was buried.

The driver was buried.

The driver was buried.

The driver was buried.

The driver was buried.

The driver was buried.

The driver was buried.

The driver was buried.

The driver was buried.

The driver was buried.

The driver was buried.

The driver was buried.

The driver was buried.

The driver was buried.

The driver was buried.

The driver was buried.

The driver was buried.

The driver was buried.

The driver was buried.

The driver was buried.

The driver was buried.

The driver was buried.

The driver was buried.

The driver was buried.

The driver was buried.

The driver was buried.

The driver was buried.

The driver was buried.

The driver was buried.

McFarland, 48, Boise, Can't

Large volumes of water and other acts damaging their property.

They also asked for an injunction to prevent the Forest Service from destroying a dam and reservoir they say they built on their property with Forest Service knowledge.

TAX ENDORSED

BOISE (AP) — Idaho's 9 percent sales tax has been endorsed in closing sessions of the state legislature.

It was passed by a 30-10 vote.

The tax is to take effect July 1, 1966.

The tax will be used for public assistance programs.

The tax will be used for public assistance programs.

The tax will be used for public assistance programs.

The tax will be used for public assistance programs.

The tax will be used for public assistance programs.

The tax will be used for public assistance programs.

The tax will be used for public assistance programs.

The tax will be used for public assistance programs.

The tax will be used for public assistance programs.

The tax will be used for public assistance programs.

The tax will be used for public assistance programs.

The tax will be used for public assistance programs.

The tax will be used for public assistance programs.

The tax will be used for public assistance programs.

The tax will be used for public assistance programs.

The tax will be used for public assistance programs.

The tax will be used for public assistance programs.

The tax will be used for public assistance programs.

The tax will be used for public assistance programs.

The tax will be used for public assistance programs.

The tax will be used for public assistance programs.

The tax will be used for public assistance programs.

The tax will be used for public assistance programs.

The tax will be used for public assistance programs.

The tax will be used for public assistance programs.

The tax will be used for public assistance programs.

The tax will be used for public assistance programs.

The tax will be used for public assistance programs.

The tax will be used for public assistance programs.

The tax will be used for public assistance programs.

The tax will be used for public assistance programs.

The tax will be used for public assistance programs.

The tax will be used for public assistance programs.

The tax will be used for public assistance programs.

The tax will be used for public assistance programs.

The tax will be used for public assistance programs.

The tax will be used for public assistance programs.

The tax will be used for public assistance programs.

The tax will be used for public assistance programs.

The tax will be used for public assistance programs.

The tax will be used for public assistance programs.

The tax will be used for public assistance programs.

The tax will be used for public assistance programs.

The tax will be used for public assistance programs.

The tax will be used for public assistance programs.

The tax will be used for public assistance programs.

HELD OVER! ★ MOTOR-VU ★

2nd HILARIOUS WEEK!

DIRECT FROM ROADSHOW RUNS!

1st TIME AT POPULAR PRICES!

SEE NOW THE WEST WAS FIGHTING!

THE HALLELUJAH TRAIL

THE HALLELUJAH TRAIL

THE HALLELUJAH TRAIL

THE HALLELUJAH TRAIL

THE HALLELUJAH TRAIL

THE HALLELUJAH TRAIL

THE HALLELUJAH TRAIL

THE HALLELUJAH TRAIL

THE HALLELUJAH TRAIL

THE HALLELUJAH TRAIL

THE HALLELUJAH TRAIL

THE HALLELUJAH TRAIL

THE HALLELUJAH TRAIL

THE HALLELUJAH TRAIL

THE HALLELUJAH TRAIL

THE HALLELUJAH TRAIL

THE HALLELUJAH TRAIL

THE HALLELUJAH TRAIL

THE HALLELUJAH TRAIL

THE HALLELUJAH TRAIL

THE HALLELUJAH TRAIL

THE HALLELUJAH TRAIL

THE HALLELUJAH TRAIL

THE HALLELUJAH TRAIL

THE HALLELUJAH TRAIL

THE HALLELUJAH TRAIL

THE HALLELUJAH TRAIL

THE HALLELUJAH TRAIL

THE HALLELUJAH TRAIL

THE HALLELUJAH TRAIL

THE HALLELUJAH TRAIL

THE HALLELUJAH TRAIL

THE HALLELUJAH TRAIL

THE HALLELUJAH TRAIL

THE HALLELUJAH TRAIL

THE HALLELUJAH TRAIL

THE HALLELUJAH TRAIL

THE HALLELUJAH TRAIL

THE HALLELUJAH TRAIL

THE HALLELUJAH TRAIL

THE HALLELUJAH TRAIL

THE HALLELUJAH TRAIL

THE HALLELUJAH TRAIL

THE HALLELUJAH TRAIL

THE HALLELUJAH TRAIL

THE HALLELUJAH TRAIL

THE HALLELUJAH TRAIL

THE HALLELUJAH TRAIL

THE HALLELUJAH TRAIL

RAMONA THEATRE

THURS., FRI., SAT.

"YELLOW ROLLS-ROYCE"

Ingrid Bergman and Rex Harrison

SANTA CLAUS SPECIAL AT MATINEE

SANTA CLAUS CONQUERS THE MARTIANS

SANTA CLAUS CONQUERS THE MARTIANS

SANTA CLAUS CONQUERS THE MARTIANS

SANTA CLAUS CONQUERS THE MARTIANS

SANTA CLAUS CONQUERS THE MARTIANS

SANTA CLAUS CONQUERS THE MARTIANS

SANTA CLAUS CONQUERS THE MARTIANS

SANTA CLAUS CONQUERS THE MARTIANS

SANTA CLAUS CONQUERS THE MARTIANS

SANTA CLAUS CONQUERS THE MARTIANS

SANTA CLAUS CONQUERS THE MARTIANS

SANTA CLAUS CONQUERS THE MARTIANS

SANTA CLAUS CONQUERS THE MARTIANS

SANTA CLAUS CONQUERS THE MARTIANS

SANTA CLAUS CONQUERS THE MARTIANS

SANTA CLAUS CONQUERS THE MARTIANS

SANTA CLAUS CONQUERS THE MARTIANS

SANTA CLAUS CONQUERS THE MARTIANS

SANTA CLAUS CONQUERS THE MARTIANS

SANTA CLAUS CONQUERS THE MARTIANS

SANTA CLAUS CONQUERS THE MARTIANS

SANTA CLAUS CONQUERS THE MARTIANS

SANTA CLAUS CONQUERS THE MARTIANS

SANTA CLAUS CONQUERS THE MARTIANS

SANTA CLAUS CONQUERS THE MARTIANS

SANTA CLAUS CONQUERS THE MARTIANS

SANTA CLAUS CONQUERS THE MARTIANS

SANTA CLAUS CONQUERS THE MARTIANS

SANTA CLAUS CONQUERS THE MARTIANS

SANTA CLAUS CONQUERS THE MARTIANS

SANTA CLAUS CONQUERS THE MARTIANS

SANTA CLAUS CONQUERS THE MARTIANS

SANTA CLAUS CONQUERS THE MARTIANS

SANTA CLAUS CONQUERS THE MARTIANS

SANTA CLAUS CONQUERS THE MARTIANS

SANTA CLAUS CONQUERS THE MARTIANS

SANTA CLAUS CONQUERS THE MARTIANS

SANTA CLAUS CONQUERS THE MARTIANS

SANTA CLAUS CONQUERS THE MARTIANS

SANTA CLAUS CONQUERS THE MARTIANS

SANTA CLAUS CONQUERS THE MARTIANS

SANTA CLAUS CONQUERS THE MARTIANS

SANTA CLAUS CONQUERS THE MARTIANS

SANTA CLAUS CONQUERS THE MARTIANS

SANTA CLAUS CONQUERS THE MARTIANS

SANTA CLAUS CONQUERS THE MARTIANS

SANTA CLAUS CONQUERS THE MARTIANS

SANTA CLAUS CONQUERS THE MARTIANS

SANTA CLAUS CONQUERS THE MARTIANS

BANK CLUB

JEROME 108 NORTH LINCOLN

JIM CHESSNUT, MANAGER

MUSIC BY THE MC's

Charlie Crane, Everett Mann, Jack Miller, Frankie Carroll

VORIS Special Matinee Only

TWO SHOWINGS EACH DAY SAT. - SUN. Shows at 2:00 and 3:30 50c each for all ages

SANTA BRINGS CHRISTMAS FUN TO MARS

Blasit off for Mars...with Santa and a pair of Earth-Kids!

Science-Fun-Fiction at its height!

SANTA CLAUS CONQUERS THE MARTIANS

SANTA CLAUS CONQUERS THE MARTIANS

SANTA CLAUS CONQUERS THE MARTIANS

SANTA CLAUS CONQUERS THE MARTIANS

SANTA CLAUS CONQUERS THE MARTIANS

SANTA CLAUS CONQUERS THE MARTIANS

SANTA CLAUS CONQUERS THE MARTIANS

SANTA CLAUS CONQUERS THE MARTIANS

SANTA CLAUS CONQUERS THE MARTIANS

SANTA CLAUS CONQUERS THE MARTIANS

SANTA CLAUS CONQUERS THE MARTIANS

SANTA CLAUS CONQUERS THE MARTIANS

SANTA CLAUS CONQUERS THE MARTIANS

SANTA CLAUS CONQUERS THE MARTIANS

SANTA CLAUS CONQUERS THE MARTIANS

SANTA CLAUS CONQUERS THE MARTIANS

SANTA CLAUS CONQUERS THE MARTIANS

SANTA CLAUS CONQUERS THE MARTIANS

SANTA CLAUS CONQUERS THE MARTIANS

SANTA CLAUS CONQUERS THE MARTIANS

SANTA CLAUS CONQUERS THE MARTIANS

SANTA CLAUS CONQUERS THE MARTIANS

SANTA CLAUS CONQUERS THE MARTIANS

SANTA CLAUS CONQUERS THE MARTIANS

SANTA CLAUS CONQUERS THE MARTIANS

SANTA CLAUS CONQUERS THE MARTIANS

SANTA CLAUS CONQUERS THE MARTIANS

SANTA CLAUS CONQUERS THE MARTIANS

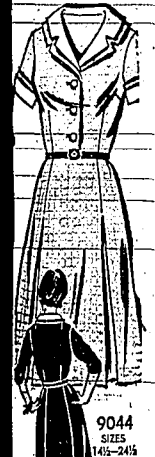
Valley Couple Repeats Wives In LDS Rites

REPEATS — Mrs. Bettie S. Hansen, daughter of Mr. and Mrs. Blaine S. Govey, Bliss, was the bride of Ross Colless, son of Mr. and Mrs. A. E. Colless, at the LDS Ward Chapel, 1005 S. West, at 7 a. m. Sunday. Harold Hurst performed the ceremony. Given in marriage by her father, the bride wore a gown of white lace over satin encased with a white orchid corsage. Mrs. Wallace Carrier, sister of the bridegroom, was matron of honor. Best man was Bert Colless, brother of the bridegroom. Traditional wedding music was played by Larry Tascart. A wedding dinner was hosted by the bride's parents at the home of the couple. The couple was honored Nov. 14 at an open house reception at the home of Mr. and Mrs. Clifford Jackson, Burley. Gifts of gifts and guest book were presented by JoDene Robinson, Ger Robinson and "Cousin" Rob. All daughters of the bride. Mrs. Shirley Pike presided at the punch bowl and was seated by Mrs. Joyce Malier.



MR. AND MRS. LARRY W. DeBOARD (Sisq. Morita Photo)

Marian Martin Pattern



9044 SIZES 14½-24½

CRISP SLIMMER

Go, go, go with a bright glow contrast, upper collar cast. Altering light on your face. See pleat-front shirtwaist in new waist contour.

Printed Pattern 9044: Hill size 16½, 18½, 20½, 22½, 24½. Size 16½ takes 4½ yards fabric; 24 yards 35-inch contrast.

Fifty cents in coins for each pattern—add 15 cents for each pattern for first-class mailing and special handling. Send in 10¢. Marian, Times News, Pattern Dept., 232 West 18th St., New York, N.Y. 10011. Print name, address with zip, size and style number.

Discover the secret of a well-tressed woman! Discover 330 interesting, new design ideas in our new Fall-Winter Pattern Catalog. All sizes! Coupon for the pattern in catalog. Send 50 cents.

SEE TIMES-NEWS WANT ADS FOR FAST-SELLING RESULTS

Milk is just milk

...unless it's



YOUNG'S DAIRY

Then you know it's Quality Check'd!

Janice Henman, DeBoard Recite Nuptial Vows

—Janice DeBoard, daughter of Mr. and Mrs. Dale W. Henman, and Larry W. DeBoard, son of Mr. and Mrs. Wayne DeBoard, Twin Falls, were united in marriage Nov. 13 in a candlelight ceremony at the First Christian Church. The double ring ceremony was performed by Rev. Donald Hoffman before an arch of flowers and pink-rose-flanked by two baskets of pink and white chrysanthemums and candelabras with heart-shaped rhinestone centers. Sharon Madron was maid of honor. Bridesmaids were Mrs. Donna Henman, sister-in-law of the bride, and Mrs. Barbara Mason, sister of the bridegroom. Junior bridesmaid was Cheryl Mason, niece of the bridegroom. Best man was Michael Styner. Ushers included Gail Wood, Ken Bull, Sam Austin and Roger DeBoard, brother of the bridegroom. Candelighters were Robert White, cousin of the bridegroom, and Roger DeBoard. Flower girls were Betsy Harney and Karmi Henman, niece of the bride. The rings were carried by Jimmy Mason, nephew of the bridegroom. Organist was Mrs. Hoffman. Soloist was Donald Edwards and a duet was sung by Mrs. Al Nye and Mrs. Amos Read. Reception music was furnished by the church basement. The bride's table was covered with pink satin enhanced with a nylon skirt. The table was centered with a four-tiered wedding cake decorated with pink roses and topped with white wedding bells. The cake was flanked by bouquets of pink and white carnations and brass candelabras holding white tapers. Mrs. David Denton, cousin of the bride, and Kathy White, cousin of the bridegroom, cut and served the cake. Coffee and punch were served by Becky Read and Karen Christian. Guests were seated at quarter tables covered with white-tinted cloths and centered with net-trimmed milk glass compotes containing floating pink carnations.

Guests were registered by Peggy Kuykendall and Mrs. Wayne Duncan. Gifts were arranged by Pamela Bennett, Patricia Shorthouse, Diana Ivanjine, Connie Van Ostran, Carlene Miller and Dona White. Members of the Christian Women's Fellowship were in charge of decorations and serving during the reception. The couple took a wedding trip to California. Out-of-town guests attended from Berryville, Ark.; Colville, N.Y.; Oden, Boise; Caldwell, Idaho; and Boise, Idaho.

The bride was honored at a pre-nuptial shower at the First Christian Church hosted by Mrs. M. Kuykendall, Mrs. Nye, Mrs. Amos Read, Mrs. Robert Tucker, Mrs. Frank Elinger, Mrs. Melvin Elinger, Mrs. Ted Coates, and Mrs. Noah Oliver. A miscellaneous shower was given for the bride by Sharon Madron and Mrs. William Madron.

RESIDENTS MOVE FAIRFIELD

—Mr. and Mrs. Lesley Bartholomew are moving to Hatley after residing in Fairfield for several years. Mrs. Bartholomew is State Highway Department supervisor.

Social Events

A Moose dinner-bridge luncheon will be held at 2 p. m. Sunday in Jerome for Moose members and their guests. Entertaining the bowling, a potluck dinner will be served at the Jerome Moose Home. Members are asked to bring a covered dish.

—Sermon—Golfers—Nov. 12 and Ladies Auxiliary Fair—The Mission will meet at 8 p. m. Monday at the Twin Falls IOOF Temple for the yearly review. A meeting for the review is set for 2 p. m. Sunday at the IOOF Temple.

—Panhellene will meet at 1 p. m. Saturday at the Depot Grill Cafeteria. Hostesses are Mrs. C. W. Burgess and Mrs. Ann Jones. Reservations can be obtained by calling Mrs. Burgess, 733-459, or Mrs. Jones, 733-574.

Veterans of Foreign Wars, Post and Auxiliary of District No. 6, will have a potluck dinner at 1 p. m. Sunday at the Bull W/V Hall. Those attending are asked to bring a covered dish and their own table service. A meeting will be held following the dinner.

HAYLTON-EDEN—The annual banquet-and-dinner, sponsored by the Haylton LDS Relief Society, will be held Saturday evening at the church. The bazaar will open at 7 p. m. and the turkey dinner will be served from 7 to 10 p. m.

HAGERMAN—Union Rebekah Lodge will hold election of officers at a meeting at 8 p. m. Tuesday at the IOOF Hall.

HAGERMAN—The General Women's Society of Christian Service will meet at 2 p. m. Wednesday at the Methodist Church with Mrs. John W. Jones in charge of the program.

BLESS—Christian Women's Fellowship will meet at 2 p. m. Wednesday at the home of Mrs. Doran Butler.

HAGERMAN—International Order of Job's Daughters will meet at 7:30 p. m. Wednesday at the Masonic Temple.

KING HILL—The annual Christmas gift exchange, sponsored by the King Hill Home Improvement Club, will be held Dec. 10 at the home of Mrs. Elmer Williams, Glenn Ferry. All members are urged to attend and bring a gift.

Hansen WSCS Joins Kimberly Women's Unit

KIMBERLY — The Hansen Women's Society of Christian Service merged with the Kimberly WSCS at the Kimberly Methodist Church, presided by Ralph Nelson, president of the Kimberly "society," giving the welcome.

It was stated that from now on the two executive committees will function together until the end of the fiscal year in June.

Mrs. Helen Patten, introduced Mrs. Martin Toranzo, who gave a review on Famous Women of the Bible.

Guests were Mrs. Brown Vineyard, Edna Mrs. F. J. Smallwood, Kimberly, and Mrs. M. L. Welch, Ottumwa, Iowa. Plans are being made for an open house at the parsonage, Dec. 12.

Mrs. Marion Wall and Mrs. Carl Stallenberg were hostesses.



JERILYN ANN PAPE

Jerilyn Pope, Wailes Reveal Nuptial Plans

Mr. and Mrs. Henry Pape, Twin Falls, former Bull residents, announce the engagement and forthcoming marriage of their daughter, Jerilyn Ann, to Mr. and Mrs. Ernie L. Wailes, Spokane, Wash. Miss Pape is a 1962 graduate of Idaho State University. She attended the University of Idaho, Moscow, and is presently doing her student teaching at Washington Elementary School. She will finish her college work in February for a bachelor's degree in education to become a member of the class of June, 1963. While she attended the University, she was affiliated with the Pi Beta Phi Sorority.

Wailes is a 1963 graduate of the University of Idaho with a degree in forest business management. While attending the university he was affiliated with the Phi Delta Theta Fraternity. He received his commission in the Army during graduation ceremonies in June and is stationed at Fort Bliss, Tex.

The wedding is set for 8 p. m. Feb. 5 at the Immanuel Lutheran Church, Twin Falls.

Bridge Played

—SHOSHONE—Mrs. Richard Gerity was hostess for members of the Grand Slim Bridge Club, Mrs. Martine Onida was prizee. Games were won by Mrs. William Haug, Mrs. Onida and Mrs. Arvald Forson.

Meeting Held

DIETRICH—Members of the Dietrich LDS Relief Society held a special work meeting at the chapel. Members worked on their projects. The theology lesson will be held Tuesday. The activities were under the presented.

Cowbelles Unit Elects Officers

DECILO — Officers were elected at the Mini-Cassia Cowbelles meeting at the home of Mrs. Clyde Greenwell.

Officers are Mrs. Greenwell, president; Mrs. Mary Morrow, vice; Mrs. James Horner, secretary-treasurer; Mrs. Tad Abo, historian, and Mrs. Wilma Butler, publicist.

Mrs. Ralph Poulton was welcomed as a new member. Plans were completed for the Christmas gift exchange and potluck supper set for Dec. 14 at the home of Mrs. Beaver, with husbands as special guests. Discussion was held on the forthcoming Idaho State Cowbelles convention set for Sunday, Dec. 16, at the home of Mrs. Poulton.

No Make-Up Let Down So Try Before You Buy! Come in or phone for FREE DEMONSTRATION Personalized Christmas Cards and Christmas Decorations

Merle Norman COSMETIC STUDIO AND GIFT SHOP 129 Sheehana St. No. Telephone 733-3208

Meeting Held

DIETRICH—Members of the Dietrich LDS Relief Society held a special work meeting at the chapel. Members worked on their projects. The theology lesson will be held Tuesday. The activities were under the presented.

Meeting Held

DIETRICH—Members of the Dietrich LDS Relief Society held a special work meeting at the chapel. Members worked on their projects. The theology lesson will be held Tuesday. The activities were under the presented.

Meeting Held

DIETRICH—Members of the Dietrich LDS Relief Society held a special work meeting at the chapel. Members worked on their projects. The theology lesson will be held Tuesday. The activities were under the presented.

Meeting Held

DIETRICH—Members of the Dietrich LDS Relief Society held a special work meeting at the chapel. Members worked on their projects. The theology lesson will be held Tuesday. The activities were under the presented.

Meeting Held

DIETRICH—Members of the Dietrich LDS Relief Society held a special work meeting at the chapel. Members worked on their projects. The theology lesson will be held Tuesday. The activities were under the presented.

Meeting Held

DIETRICH—Members of the Dietrich LDS Relief Society held a special work meeting at the chapel. Members worked on their projects. The theology lesson will be held Tuesday. The activities were under the presented.

Meeting Held

DIETRICH—Members of the Dietrich LDS Relief Society held a special work meeting at the chapel. Members worked on their projects. The theology lesson will be held Tuesday. The activities were under the presented.

Meeting Held

DIETRICH—Members of the Dietrich LDS Relief Society held a special work meeting at the chapel. Members worked on their projects. The theology lesson will be held Tuesday. The activities were under the presented.

Meeting Held

DIETRICH—Members of the Dietrich LDS Relief Society held a special work meeting at the chapel. Members worked on their projects. The theology lesson will be held Tuesday. The activities were under the presented.

Meeting Held

DIETRICH—Members of the Dietrich LDS Relief Society held a special work meeting at the chapel. Members worked on their projects. The theology lesson will be held Tuesday. The activities were under the presented.

Meeting Held

DIETRICH—Members of the Dietrich LDS Relief Society held a special work meeting at the chapel. Members worked on their projects. The theology lesson will be held Tuesday. The activities were under the presented.

Meeting Held

DIETRICH—Members of the Dietrich LDS Relief Society held a special work meeting at the chapel. Members worked on their projects. The theology lesson will be held Tuesday. The activities were under the presented.

Meeting Held

DIETRICH—Members of the Dietrich LDS Relief Society held a special work meeting at the chapel. Members worked on their projects. The theology lesson will be held Tuesday. The activities were under the presented.

Meeting Held

DIETRICH—Members of the Dietrich LDS Relief Society held a special work meeting at the chapel. Members worked on their projects. The theology lesson will be held Tuesday. The activities were under the presented.

Meeting Held

DIETRICH—Members of the Dietrich LDS Relief Society held a special work meeting at the chapel. Members worked on their projects. The theology lesson will be held Tuesday. The activities were under the presented.

Meeting Held

DIETRICH—Members of the Dietrich LDS Relief Society held a special work meeting at the chapel. Members worked on their projects. The theology lesson will be held Tuesday. The activities were under the presented.

Meeting Held

DIETRICH—Members of the Dietrich LDS Relief Society held a special work meeting at the chapel. Members worked on their projects. The theology lesson will be held Tuesday. The activities were under the presented.

Meeting Held

DIETRICH—Members of the Dietrich LDS Relief Society held a special work meeting at the chapel. Members worked on their projects. The theology lesson will be held Tuesday. The activities were under the presented.

Meeting Held

DIETRICH—Members of the Dietrich LDS Relief Society held a special work meeting at the chapel. Members worked on their projects. The theology lesson will be held Tuesday. The activities were under the presented.

Meeting Held

DIETRICH—Members of the Dietrich LDS Relief Society held a special work meeting at the chapel. Members worked on their projects. The theology lesson will be held Tuesday. The activities were under the presented.

Meeting Held

DIETRICH—Members of the Dietrich LDS Relief Society held a special work meeting at the chapel. Members worked on their projects. The theology lesson will be held Tuesday. The activities were under the presented.

Meeting Held

DIETRICH—Members of the Dietrich LDS Relief Society held a special work meeting at the chapel. Members worked on their projects. The theology lesson will be held Tuesday. The activities were under the presented.

Meeting Held

DIETRICH—Members of the Dietrich LDS Relief Society held a special work meeting at the chapel. Members worked on their projects. The theology lesson will be held Tuesday. The activities were under the presented.

Meeting Held

DIETRICH—Members of the Dietrich LDS Relief Society held a special work meeting at the chapel. Members worked on their projects. The theology lesson will be held Tuesday. The activities were under the presented.

Meeting Held

DIETRICH—Members of the Dietrich LDS Relief Society held a special work meeting at the chapel. Members worked on their projects. The theology lesson will be held Tuesday. The activities were under the presented.

Meeting Held

DIETRICH—Members of the Dietrich LDS Relief Society held a special work meeting at the chapel. Members worked on their projects. The theology lesson will be held Tuesday. The activities were under the presented.

Magic Valley Favorites

MRS. OMAR F. BASE Twin Falls

- Carob Cake
- 1 cup dates
- 1 cup walnuts
- 1 cup hot water
- 1 teaspoon soda
- 1 cup—chocolate
- 1 cup sugar
- 2 tablespoons carob
- 2 cups flour
- 1 TBSP—vanilla

Four hot water over dates, nuts and soda and let set while remaining ingredients are mixed together and incorporated. Mix 10 min and carob in and mix well. Add vanilla. Add first mixture and pour into a baking pan 12 by 9½ by 2½ inches. Bake 20 minutes and done.

(Note: Mrs. Base suggests her Carob Cake for those who cannot eat chocolate.)

Carob powder is an excellent substitute and can be purchased in several forms from health food stores.

The Times-News will pay \$25 each for a recipe submitted for Magic Valley Favorites. If you have a recipe to submit, mail it to the Editor, Times-News, P.O. Box 100, Twin Falls, Idaho. The recipe becomes the property of the Times-News and cannot be returned.

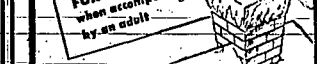
TONITE

Friday, Dec. 3rd 5 p.m. to 9 p.m.

Santa's Coming to Newberys

...Jolly old Santa will be here to chat with all the kiddies and listen to their Christmas "wants" and the children will be thrilled by our fairyland of toys... Just about the most complete, best-priced toy selection Santa has ever assembled.

FREE GIFT FROM SANTA FOR EACH CHILD when accompanied by an adult.



OPEN EVERY NIGHT 'TIL CHRISTMAS.

Open Sunday 11 a.m. 'til 5 p.m.

The Christmas I Received

Wylers incalflex

What could be more thrilling than a beautiful new Wylers watch for Christmas? It's the watch that combines stunning fashion with completely dependable performance. You can see its smart good looks for yourself. But you can't see Wylers' exclusive Incalflex balance wheel and the mainspring that are guaranteed against shock for the life of the watch—replaced free if broken ever. Come see our breathtaking collection.

A. Stainless steel, waterproof \$29.95 also self-winding \$44.95

B. Ladies' 10K 18K expansion band, white or yellow \$39.95

C. Stainless steel, self-winding, waterproof with date \$59.95 without date \$54.95

D. Ladies' patina 10K 18K expansion band, white or yellow \$49.95

E. 10K gold, self-winding, waterproof, date \$120.00

Wylers incalflex balance wheel C-10-E-2 with shock absorber, self-winding, waterproof, date \$59.95

Wylers incalflex watch C-10-E-2 with shock absorber, self-winding, waterproof, date \$59.95

Wylers incalflex watch C-10-E-2 with shock absorber, self-winding, waterproof, date \$59.95

Wylers incalflex watch C-10-E-2 with shock absorber, self-winding, waterproof, date \$59.95

Wylers incalflex watch C-10-E-2 with shock absorber, self-winding, waterproof, date \$59.95

Wylers incalflex watch C-10-E-2 with shock absorber, self-winding, waterproof, date \$59.95

Wylers incalflex watch C-10-E-2 with shock absorber, self-winding, waterproof, date \$59.95

Wylers incalflex watch C-10-E-2 with shock absorber, self-winding, waterproof, date \$59.95

Be Different - With Beautiful FLOCKED CHRISTMAS TREES

SPECIAL CHRISTMAS FLOCKING With natural Evergreen fragrance (at no extra cost)

Bring your trees in... (call for appointment) or we will pick-up and deliver.

Colors available: Pink, Green, White, Blue, Yellow

Metal Tree Stands FOR SALE

Enjoy a special Christmas this year with a lovely and different tree... from Globe's FLOCKED TREE SERVICE.

GLOBE SEED & FEED CO.

224 4th Ave. So. Truck Lane 733-1373

Enjoy a special Christmas this year with a lovely and different tree... from Globe's FLOCKED TREE SERVICE.

GLOBE SEED & FEED CO.

224 4th Ave. So. Truck Lane 733-1373

Enjoy a special Christmas this year with a lovely and different tree... from Globe's FLOCKED TREE SERVICE.

GLOBE SEED & FEED CO.

224 4th Ave. So. Truck Lane 733-1373

Sterling Jewelry Company

A FAMILY TRADITION SINCE 1910 115 Shoshone Street South

The Daily Investor

By WILLIAM A. DOYLE

Q. Some friends and I recently had a discussion about the costs of trading in stocks. I contend that trading is more expensive than most people realize. I feel that two expenses should be counted in — the interest lost by taking money out of the bank to buy stocks and the interest a person must pay to a broker on a margin account. My friends don't agree. Do you?

A. If you are talking strictly about "trading" — rapid turnover of buying and selling — I agree with you. But if you include investing — buying stock and holding it for the long pull — I will have to dispute the first item on your expense account.

When you take money out of the savings account and put it into stock, the object is to make more money than you would get in bank interest. These days the current yields on dividend-paying stocks are in the 4 to 5 percent interest range. However, if the company in which you own stock prospers, you can expect a dividend increase — offsetting your "expense" on that score. Many long-term investors are getting yields on their original investments (dividends divided by the price they paid) far in excess of what they would get from savings accounts.

Your other point is absolutely correct. When you buy stock on margin, you put up only part of the purchase price. You borrow the rest through your broker and you pay interest on what you have borrowed. That interest cost can add up, if it should not be overlooked as an expense.

In case you and your friends don't realize it, let me point out that most people buy their stocks outright. They don't buy

and Southern Ohio stockholders to the dividend. So, stop prying about your broker. I know of nothing that creates confusion more than the ex-dividend procedure. Like many other people, you mistook the "record date" for the ex-dividend date.

Do not worry only because the letters of general interest in the record date are not the same as the date on which the stock is traded at the opening of the market day before the record date. That's the normal procedure. Anyone who bought the stock in a "regular way transaction" (the way most trades are handled) on or after the ex-dividend date was not entitled to that dividend.

The person who sold the 60 shares you bought was entitled to the dividend. So, stop prying about your broker. I know of nothing that creates confusion more than the ex-dividend procedure. Like many other people, you mistook the "record date" for the ex-dividend date.

Do not worry only because the letters of general interest in the record date are not the same as the date on which the stock is traded at the opening of the market day before the record date. That's the normal procedure. Anyone who bought the stock in a "regular way transaction" (the way most trades are handled) on or after the ex-dividend date was not entitled to that dividend.

Q. I have a legitimate gripe against my broker. I bought 100 shares of Columbus and Southern Ohio Electric common stock on Sept. 22. It went "ex-dividend" on Sept. 24. I still haven't received the dividend. Am I entitled to this dividend? If not, who is?

A. No, you are not entitled to that dividend. A check of the record book shows that you have your dates mixed up. The latest dividend (35 cents a share) was paid to Columbus

IN COLOR ON THEISEN THEATRE

Friday at 10:40 P.M.

KMYT, Channel 11

"BLACK SHIELD OF FALLWORTH"

Don't Miss It!

with these exclusive features

- EXCITING NATURAL COLOR
- NEW IMPROVED 25" and 23" diagonally measured RECTANGULAR COLOR PICTURE TUBES
- MOVIE CLEAR BLACK AND WHITE
- EXTRA LONG LIFE BUILT-IN
- AUTOMATIC COLOR-PURIFIER (DeGousser)
- HIGH FIDELITY SOUND
- ELEVEN MODELS—CONTEMPORARY, EARLY AMERICAN, FRENCH PROVINCIAL

"THE ONLY COLOR-TV RECEIVER THAT COMES HOME TO STAY"

World renowned for sight and sound



SETCHELL CARLSON UNTEGRATED TELEVISION

with these exclusive features

- EXCITING NATURAL COLOR
- NEW IMPROVED 25" and 23" diagonally measured RECTANGULAR COLOR PICTURE TUBES
- MOVIE CLEAR BLACK AND WHITE
- EXTRA LONG LIFE BUILT-IN
- AUTOMATIC COLOR-PURIFIER (DeGousser)
- HIGH FIDELITY SOUND
- ELEVEN MODELS—CONTEMPORARY, EARLY AMERICAN, FRENCH PROVINCIAL

"THE ONLY COLOR-TV RECEIVER THAT COMES HOME TO STAY"

TELEVISION SCHEDULES

FRIDAY, DEC. 3

"Hogan's Heroes." (Color, 8:30 p.m. CBS)—POW LeBeau, who knows nothing about chemistry, manufactured as a brilliant chemist while Hogan juggles the real scientist from Stalag 13 to England.

"The Smothers Brothers Show." (7:30 p.m. CBS)—The fraternal twins with the underworld when Tom is assigned to fill the framework of a young girl's life.

"The Jimmy Dean Show." (9 p.m. ABC)—Tonight's show is at Carnegie Hall, with Metropolitan Opera star Ellen Farrell, James Foye Cramer, guitarist Art Atkins and singer Don McGuire.

"Trials of O'Brien." (8:30 p.m. CBS-KBOI only)—Milton Berle stars as a bawdy pants comedian accused of murder. Hal March, Oscar-winner Rita Moreno and Danny Dayton are featured. This episode will be telecast at 8 p.m. Sunday on KSL.

BEST FRIDAY NIGHT MOVIES

"Rio Bravo." (Color, 1953) John Wayne, Dean Martin, Ricky Nelson and Angie Dickinson 10 p.m.

at Rio Bravo when the courageous sheriff of a small border town fights to keep a wanted murderer in jail, despite the prisoner's powerful brother and a somewhat belligerent girl. Plenty of action and some humor in the typical Wayne style.

SATURDAY, DEC. 4

"Gemini Space Flight." (Color, Space)—All three crewmen plan to begin coverage of the pre-launch activities and Gemini 7 between 10 a.m. and noon for Astronauts Walter Borman and James A. Lovell's two-week flight. The flight is scheduled to begin at 11:30 a.m. on Saturday and will be followed by Gemini 6, which is planned to rendezvous with Gemini 7. Splashdown is tentatively set for Dec. 14. Gemini 6 and 7 will be the first two Gemini flights in the Gemini program.

"College Football." (Color, 11 a.m.)—Penn State vs. Michigan State, 11:30 a.m.

"College Football." (Color, 2:30 p.m.)—New York Jets vs. Denver Broncos, 2:30 p.m.

"The Loner." (7:30 p.m. CBS)—Barry Sullivan plays a doctor who is urged to perform an autopsy against his will on a young girl.

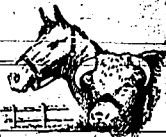
BEST SATURDAY NIGHT MOVIES

"The Big Carnival." (1931) Kirk Douglas, Jan Sterling and Richard Benedict (7 p.m. KUTV, KBOI and KPII)—Intense drama directed by Bill Hader about an alcoholic newspaperman struggling to make a comeback.

FRIDAY, DECEMBER 3, 1965

KMYT	KBOI	KTVB	KID
Channel 11	Bolsa	Bolsa	Idaho Falls
ABC-NBC	Channel 4	Channel 3	Channel 3
ABC-NBC	CBS-ABC	ABC-NBC	ABC-CBS
6:00 News	News	Movie	News
6:30 World West	News	News	World West
7:00 World West	News	News	World West
7:30 World West	News	News	World West
8:00 News	News	News	News
8:30 News	News	News	News
9:00 News	News	News	News
9:30 News	News	News	News
10:00 News	News	News	News
10:30 News	News	News	News
11:00 News	News	News	News
11:30 News	News	News	News
12:00 News	News	News	News
12:30 News	News	News	News
1:00 News	News	News	News
1:30 News	News	News	News
2:00 News	News	News	News
2:30 News	News	News	News
3:00 News	News	News	News
3:30 News	News	News	News
4:00 News	News	News	News
4:30 News	News	News	News
5:00 News	News	News	News
5:30 News	News	News	News
6:00 News	News	News	News
6:30 News	News	News	News
7:00 News	News	News	News
7:30 News	News	News	News
8:00 News	News	News	News
8:30 News	News	News	News
9:00 News	News	News	News
9:30 News	News	News	News
10:00 News	News	News	News
10:30 News	News	News	News
11:00 News	News	News	News
11:30 News	News	News	News
12:00 News	News	News	News
12:30 News	News	News	News
1:00 News	News	News	News
1:30 News	News	News	News
2:00 News	News	News	News
2:30 News	News	News	News
3:00 News	News	News	News
3:30 News	News	News	News
4:00 News	News	News	News
4:30 News	News	News	News
5:00 News	News	News	News
5:30 News	News	News	News
6:00 News	News	News	News
6:30 News	News	News	News
7:00 News	News	News	News
7:30 News	News	News	News
8:00 News	News	News	News
8:30 News	News	News	News
9:00 News	News	News	News
9:30 News	News	News	News
10:00 News	News	News	News
10:30 News	News	News	News
11:00 News	News	News	News
11:30 News	News	News	News
12:00 News	News	News	News
12:30 News	News	News	News
1:00 News	News	News	News
1:30 News	News	News	News
2:00 News	News	News	News
2:30 News	News	News	News
3:00 News	News	News	News
3:30 News	News	News	News
4:00 News	News	News	News
4:30 News	News	News	News
5:00 News	News	News	News
5:30 News	News	News	News
6:00 News	News	News	News
6:30 News	News	News	News
7:00 News	News	News	News
7:30 News	News	News	News
8:00 News	News	News	News
8:30 News	News	News	News
9:00 News	News	News	News
9:30 News	News	News	News
10:00 News	News	News	News
10:30 News	News	News	News
11:00 News	News	News	News
11:30 News	News	News	News
12:00 News	News	News	News
12:30 News	News	News	News
1:00 News	News	News	News
1:30 News	News	News	News
2:00 News	News	News	News
2:30 News	News	News	News
3:00 News	News	News	News
3:30 News	News	News	News
4:00 News	News	News	News
4:30 News	News	News	News
5:00 News	News	News	News
5:30 News	News	News	News
6:00 News	News	News	News
6:30 News	News	News	News
7:00 News	News	News	News
7:30 News	News	News	News
8:00 News	News	News	News
8:30 News	News	News	News
9:00 News	News	News	News
9:30 News	News	News	News
10:00 News	News	News	News
10:30 News	News	News	News
11:00 News	News	News	News
11:30 News	News	News	News
12:00 News	News	News	News
12:30 News	News	News	News
1:00 News	News	News	News
1:30 News	News	News	News
2:00 News	News	News	News
2:30 News	News	News	News
3:00 News	News	News	News
3:30 News	News	News	News
4:00 News	News	News	News
4:30 News	News	News	News
5:00 News	News	News	News
5:30 News	News	News	News
6:00 News	News	News	News
6:30 News	News	News	News
7:00 News	News	News	News
7:30 News	News	News	News
8:00 News	News	News	News
8:30 News	News	News	News
9:00 News	News	News	News
9:30 News	News	News	News
10:00 News	News	News	News
10:30 News	News	News	News
11:00 News	News	News	News
11:30 News	News	News	News
12:00 News	News	News	News
12:30 News	News	News	News
1:00 News	News	News	News
1:30 News	News	News	News
2:00 News	News	News	News
2:30 News	News	News	News
3:00 News	News	News	News
3:30 News	News	News	News
4:00 News	News	News	News
4:30 News	News	News	News
5:00 News	News	News	News
5:30 News	News	News	News
6:00 News	News	News	News
6:30 News	News	News	News
7:00 News	News	News	News
7:30 News	News	News	News
8:00 News	News	News	News
8:30 News	News	News	News
9:00 News	News	News	News
9:30 News	News	News	News
10:00 News	News	News	News
10:30 News	News	News	News
11:00 News	News	News	News
11:30 News	News	News	News
12:00 News	News	News	News
12:30 News	News	News	News
1:00 News	News	News	News
1:30 News	News	News	News
2:00 News	News	News	News
2:30 News	News	News	News
3:00 News	News	News	News
3:30 News	News	News	News
4:00 News	News	News	News
4:30 News	News	News	News
5:00 News	News	News	News
5:30 News	News	News	News
6:00 News	News	News	News
6:30 News	News	News	News
7:00 News	News	News	News
7:30 News	News	News	News
8:00 News	News	News	News
8:30 News	News	News	News
9:00 News	News	News	News
9:30 News	News	News	News
10:00 News	News	News	News
10:30 News	News	News	News
11:00 News	News	News	News
11:30 News	News	News	News
12:00 News	News	News	News
12:30 News	News	News	News
1:00 News	News	News	News
1:30 News	News	News	News
2:00 News	News	News	News
2:30 News	News	News	News
3:00 News	News	News	News
3:30 News	News	News	News
4:00 News	News	News	News
4:30 News	News	News	News
5:00 News	News	News	News
5:30 News	News	News	News
6:00 News	News	News	News
6:30 News	News	News	News
7:00 News	News	News	News
7:30 News	News	News	News
8:00 News	News	News	News
8:30 News	News	News	News
9:00 News	News	News	News
9:30 News	News	News	News
10:00 News	News	News	News
10:30 News	News	News	News
11:00 News	News	News	News
11:30 News	News	News	News
12:00 News	News	News	News
12:30 News	News	News	News
1:00 News	News	News	News
1:30 News	News	News	News
2:00 News	News	News	News
2:30 News	News	News	News
3:00 News	News	News	News
3:30 News	News	News	News
4:00 News	News	News	News
4:30 News	News	News	News
5:00 News	News	News	News
5:30 News	News	News	News
6:00 News	News	News	News
6:30 News	News	News	News
7:00 News	News	News	News
7:30 News	News	News	News
8:00 News	News	News	News
8:30 News	News	News	News
9:00 News	News	News	News
9:30 News	News	News	News
10:00 News	News	News	News
10:30 News	News	News	News
11:00 News	News	News	News
11:30 News	News	News	News
12:00 News	News	News	News
12:30 News	News	News	News
1:00 News	News	News	News
1:30 News	News	News	News
2:00 News	News	News	News
2:30 News	News	News	News
3:00 News	News	News	News
3:30 News	News	News	News
4:00 News	News	News	News
4:30 News	News	News	News
5:00 News	News	News	News
5:30 News	News	News	News
6:00 News	News	News	News
6:30 News	News	News	News
7:00 News	News	News	News
7:30 News	News	News	News
8:00 News	News	News	News
8:30 News	News	News	News
9:00 News	News	News	News
9:30 News	News	News	News
10:00 News	News	News	News

Farm AND Ranch



Along Fences and Canals

Paul, Floyd, Mingo, Hazelton, and Cliff May, Vanderwever and Harold Baker, all Hayburn, have all passed cattle in the Elba Valley this summer and fall on the J. May, Paul Barker and Lewis Otter ranches and have now finished trucking them back to their own farms.

Gene Berryman drove his range herd from his ranch in Clyde Valley west of Elba to his ranch in the Malis area this week.

Mr. and Mrs. Kay Harpel, Malis, took their champion horse, "Heart's Trump" to Scottsdale, Ariz., to participate in the World's Agitation Performance. Show this week. Mr. and Mrs. Douglas Harper, Malis, and Mr. and Mrs. Ellis Parib, Elba, accompanied them.

George Peter spent Monday checking on his cattle in the Indian Cove area below Hammett. They will soon be bringing the cattle to their ranch east of King Hill for winter feeding.

Mr. and Mrs. George Peier and family assisted Mr. and Mrs. Eugene Gabert in moving their new trailer back to the Peier ranch east of King Hill, for several years and engaged in breeding and stock raising.

Mr. and Mrs. W. G. Allen, Hansen, have rented the Bulcher subjects farm which is adjacent to their own. Mr. and Mrs. William Allen, their son and daughter-in-law, will move to this ranch and will farm it with his father. Mr. and Mrs. W. D. Rout, who have been farming the Bulcher ranch, will move to Murtaugh where they have rented a 450-acre ranch owned by Clark-Kleinholz, Murtaugh.

Layton C. Warren has completed an onion storage warehouse on his farm a mile east of Hammett. The structure, 40 by 80 feet, is insulated with fiberglas, has insulated doors and is equipped with an onion sorter. The metal building has 12-foot eaves and is ventilated at each corner and at the two peaks. The upper floor is about eight inches thick. It will hold up to 5,000 sacks with ventilating paths between and over the tops, but can hold more if necessary.

Warren has been raising onions for about 30 years and states that it has been a consistently good crop for him. He usually sells about 10-12 acres of white onions and yellow sweet Spanish onions. His white onions were sorted before the building was finished, but it now contains 5,000 sacks of the yellows, which are being sorted now. The building can also be used for machinery storage, he stated.

Lee Peterson, Carey, plans for his 150 head of ewes to begin lambing in the coming week.

Mr. and Mrs. George Hendry and daughter, Barbara, left their ranch this week for Porterville, Calif., where they will make their home. The Hendrys have leased their ranch building to the west of King Hill to Mr. and Mrs. W. L. Henderson, Glenn Ferry.

Robert Graham has been hauling hay from his ranch in the Gooding district, 15 miles southeast of his ranch south of the Hill. The hay will be fed to stock this winter.

Exports Provide One-Fifth Of American Farm Market

WASHINGTON (UPI) — The export trade provides close to one-fifth of the market for U.S. farm products, according to a new report from the Agriculture Department. The \$6.1 billion value of U.S. farm exports in fiscal 1964, or 17 per cent of the \$35.5 billion cash receipts realized from farm products, is considered a record.

Railroads to Up Share of Farm Hauling

WASHINGTON (AP) — The nation's railroads are expected to increase their share of the hauling of agricultural traffic in 1965. An Agriculture Department report said rail carriers are making innovations to help them compete more effectively with truck and barge. The railroad share of such traffic fell from 58 per cent in 1946 to 43 per cent in 1964. The changes are said to include new and improved equipment and more lower freight rates.

ATTENDS SCS MEETING — Glen Nelson, Twin Falls, chairman of the Twin Falls SCS board of supervisors and one of the state association's directors, is attending the Pacific Northwest meeting of the Soil and Water Conservation Districts in Portland.

SEE TIMES-NEWS WANT ADS FOR PAST-SELLING RESULTS!

G W CHEMCO CALUMIE FERTILIZER

Complete plant food for balanced soil feeding — with all the trace elements.

SEE OR PHONE ERNIE STITT 438-2408 PAUL



LONG GALLERY, deep inside the powerhouse at Lower Salmon Falls Dam, provides protection against radioactive fallout. The facility is one of Gooding County's well-stocked shelters. The huge pile of food and medical supplies shown in the foreground is one of five located in the huge shelter. The powerhouse shelter will hold 3,730 people. Radiation levels would be reduced to less than one-thousandth of the outside radiation levels. (Times-News photo)

Tax Class

"Do You Pay too Much Federal Income Tax" will be discussed by Virgil Kennedy, University of Idaho extension farm management specialist, Wednesday at the Idaho Power Co. Auditorium. The informal class will be held from 10 a.m. to three p.m.

The meeting is designed for farm families that are keeping and analyzing their own tax returns. Farm owners are invited to attend. "Tax management is becoming a part of good farm management," Kennedy said. "A farmer need not be a tax expert, but he should know enough about taxes to recognize the income-tax aspects of a farm decision."

Draft Board Considers Farming "Not Critical"

MURTAUGH — Farming is not classified as a critical occupation for national defense, F. V. Morrison, Murtaugh, chairman of the Twin Falls Selective Service Board, told the Times-News. However, the draft status of an individual farmer is dependent on the particular situation of his farming operation, he reported.

In general, no farm would be forced to discontinue operations because an indispensable farmer was drafted. On the other hand, no special exemption exists for a farmer who is not indispensable to a farming operation. Morrison cautioned, however, that any generalization of draft status should be made tentatively. The policy of the board could be changed at any time owing to altered military manpower needs, he said.

World Corn Crop Sets New Record

WASHINGTON (UPI) — Preliminary estimates by the Foreign Agricultural Service indicate world corn production this year will be a record 5.8 billion bushels. This is five per cent above the 1964 crop and one per cent higher than the previous record set in 1963.

Canada Drought Nets Subsidies

QUEBEC — Farmers in the Canadian provinces of Quebec and Ontario were being helped this fall over the worst drought in 75 to 100 years by special feed subsidies.

The program in effect until May 15, 1965, enables farmers to buy "hog and feed grains" for their cattle at reduced prices to maintain their basic herd over the winter.

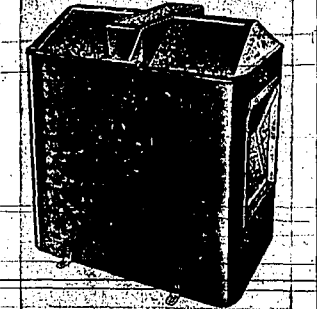
WE LOAN MORE MONEY

on your old debt — autos, radios, washers, appliances, etc. — with 14% monthly interest. Cash, auto, camera, bike, occults, tape recorders, jewelry, and any other item of value.

B & B LOANS

MAIN AND SHOSHONE STREET • ALSO BUY, SELL, TRADE

100 HEAD STOCK FOUNTAIN



Automatic water supply regardless of how cold it gets. Four easy-open lids, save heat — helps keep fountain clean. Regular \$119.95

ONLY \$69.95 Similar to built shown, but with hot dog disk in lid.

OB Supply Co.

250 MAIN AVENUE NORTH

Civil Defense Shelters Stocked for Gooding

GOODING — Joint efforts of the Agriculture Department and Bill Bunn, Wendell, Gooding County's deputy sheriff and county director of civil defense, have netted what was termed "the best county-level civil defense" preparations in Magic Valley by Howard Tankersley, state extension civil defense agent.

The Gooding County civil defense preparations include not only sheltering and marking adequate shelter facilities, but include seeing these shelters stocked with a two-week supply of food and water, medical supplies, sanitation facilities and radiation monitoring devices. At the request of Bunn, the Army Corps of Engineers surveyed possible shelter sites in the county. The report issued by the army engineers indicated that five existing shelter sites could provide adequate protection from radioactive fallout for 8.07 of the county's 9,346 people.

With improvements in these shelters, considerable more people could be safely sheltered.

Chas. W. Barlow Warehouse

HAZELTON, IDAHO

IDAHO BEANS

Certified & Commercial

Ironrite

WORLD'S FIRST AUTOMATIC BOOKS

NOW

FLOOR SALES

REG. \$32.95 **269.95**

Blacken

APPLIANCE FURNITURE

TWIN FALLS — Ph. 733-1944

SAVE GET

WATER - LABOR - ORIGINAL COST

Tri-Matic

BETTER QUALITY - GREATER YIELDS - BIGGER PROFITS.

Your original investment is less per acre to be watered than with any other mechanical or solid-set sprinkler irrigation system! And one man, alone, can operate three Tri-Matic Systems, watering adequately, completely, and economically about 20 acres per setting!

Tri-Matic

THE MOBILE, SOLID-SET, SPRINKLER IRRIGATION SYSTEM MAKES YOU MORE NET PROFIT

VISIT-OR-PHONE-COLLECT

RUPERT 436-3170	NAMPA 466-7375
IDAHO FALLS 522-3703	ASHTON 652-7447
249 S. Park Road W.	TWIN FALLS 733-8594

IRRIGATION SERVICE & INC.

Brightness of Idaho Potato Industry Attributed to Growers' Organization

BURLEY—The brightness in the Idaho potato industry is due to the men who have worked diligently the past few years to build a growers' organization. "You must not let your efforts in behalf of your organization—it must be a continuing thing," Jay Sherlock, executive secretary of the Idaho Potato and Onion Commission told the Potato Growers and Marketing Association of Idaho's annual meeting Monday.

Sherlock discussed "The Effect of Change on Change." According to his analysis, the promotion of the Idaho potato, sweeping changes have been taking place in the industry.

In 1937, when the Idaho potato advertising program began, there were only a few advertising agencies in the state. Today, he said, the number of advertising agencies is estimated at 1,800 a day.

At the same time the amount of money spent on food industry advertising has risen from \$50 million in 1937 to \$2.5 billion in 1965. This increase has been caused both by growth and by higher advertising costs, he reported.

Through the cost of newspaper and magazine advertising has jumped more than 40 percent in the past few years, the number of homes reached has increased, partially offsetting the increase, he reported.

Sherlock said that last year the Idaho Potato and Onion Commission spent more than \$400,000 for its entire advertising and promotional budget. This year the figure will jump to more than \$672,000.

Because of the increased cost, Sherlock said, it is a good time to increase the tax support for the program.

Just can't get the potato trade with diminishing advertising dollars.

Sherlock said that any tax increase would have to be initiated at the request of the industry, rather than the commission, and that the commission would request, regardless of how much, its individual members support changes.

"During the last session of the legislature, such a request for an increase was initiated, but it was a matter of time and too late. The industry was not unified in its request," he said.

"There is to be an increase then the time is starting working for it is now. The various segments of our industry will need to get together for the first time, make immediate plans to take such a request to the legislature," he continued.

"We need change as a protection for the future."



JAY SHERLOCK

Increased Taxes Paid On Farm Real Estate

WASHINGTON (UPI)—Agriculture Department economists estimated farm real estate taxes paid in 1965 on 1964 levies total \$11.7 billion.

This is a 54 percent above the 1964 farm real estate taxes of \$7.4 billion paid in 1964 on 1963 levies.

The average taxes per acre paid on 1964 levies were \$18.14 compared with \$14.3 a year earlier. The increase in 1964 levies was the 22nd consecutive annual increase in farm real estate taxes. The 1964 levies were more than double those of 1950.

The department said there is no evidence to suggest any significant slackening of the rate of increase for 1965 levies payable in 1965.

"The department said taxes on farm personal property also have trended upward. They were estimated at about \$23 billion in 1964, down from \$25 billion in 1963 because of the lower value of cattle but more than 20 percent greater than in 1962."

The department said the upward trend in farm property taxes is a direct outgrowth of the steadily expanding revenue requirements of state and local governments.

"Higher salaries for public employees, higher costs of materials, expanded requirements and rising standards for schools, roads, welfare and other services are largely responsible for the growing revenue needs."

The property tax—both farm and non-farm—contributes about 80 percent of all local tax revenues.

The department said tax rates on farm real estate are highest in the northeast lake states, the corn belt, and the north plains, lowest because of the delta, Appalachian, southeast, and southern plains regions.

States where there is heavy reliance on local financing for education services—tend to have the highest tax rates. The states where a high proportion of state-local functions are administered and financed at the state level tend to have low property taxes.

Locals have an effect on taxes. "Farm-located areas, a city is likely to be taxed at a higher amount than one a considerable distance from the metropolitan area."

Area Cattle Group Holds Annual Meet

CAREY—Lorin Simpson, Carey, was elected to the board of directors of the Idaho Cattle Association during its annual meeting Wednesday afternoon at the Craters Coffee Shop.

Holover officers are Leonard (Bud) Purdy, Pico, president; Walt Schodde, Burley, vice president; Floyd Meacham, Carey, secretary; and Walter Schodde, Burley, and Kenneth (Hank) Butram, Hailey, directors.

Simpson, replica, Clifford Sparks, Carey, outgoing director.

Two officials from the Bureau of Land Management office, Shoshone, attended the meeting and presented a business meeting. An officers meeting will be held in March or April.

Livestock, Crop Price Index Falls

WASHINGTON (UPI)—Prices farmers received for crops and livestock fell one per cent during the month ended Oct. 15, the Agriculture Department report said.

The department's monthly farm price report showed that the cost of production and living supplies purchased by farmers rose about three tenths of one per cent during the month. The October index was three per cent above a year earlier.

A comparison of farm market prices and farmers costs showed prices in October averaged 71 per cent of parity. This compared with 78 per cent in mid-October, 1964.

Parity is the price needed to put the value of commodities sold by farmers on par with the cost of things they must buy, theoretically, a fair return for their production.

The Agriculture Department said lower prices for cattle, corn and oranges were chiefly responsible for the decline in the price index for October. Partially offsetting this were wholesale price increases for milk and hogs.

Range Fee Increase Opposed

WASHINGTON (UPI)—President Johnson was asked to call off a proposed increase in fees charged for grazing stock on public lands.

The request was made in a letter from Rep. Wayne H. Judd, chairman of the Public Land Law Revision Commission.

"The Colorado Association caused administrative officials of perpetrating a 'cruel snafu' by allegedly making it appear that advisory board members representing stockmen had been given a voice in the decision."

He also protested changes in grazing policies while the commission is in the process of reviewing land law.

He said the proposed grazing fee increase would go into effect March 1, 1966, had been agreed upon a year ago but that the national advisory board council had not been told of the decision until Nov. 18 of this year.

Under the proposal, grazing fees charged by the Bureau of Land Management would be raised to a level comparable to those charged by the Forest Service.

Girl Named National 4-H Winner

NAMPA—17-year-old Miss Lynda Campbell has been named national 4-H Home Improvement winner.

She will receive a \$500 scholarship from the S and H foundation, national sponsor of the 4-H Home Improvement program according to Mrs. Joanna Matland, public relations representative for the Sperry and Hutchinson Co.

Miss Campbell is one of six national winners. Other states who have winners are Colorado, Mississippi, Nebraska, Pennsylvania and South Dakota.

Lynda is a member of the Friends' North Church and would like to attend either a Quaker college or Northwest Nazarene.

Foreign Farm Labor Off by 98 Per Cent

WASHINGTON—Foreign worker employment declined 98 per cent from August 1964 to August 1965, the Department of Labor reports.

Non-Mexicans were working anywhere in the country, although 6,540 had been employed a year earlier. Six hundred Japanese and Filipinos were employed in California this August compared with 1,309 last August.

Six hundred British West Indians were at work in Connecticut and Massachusetts this year. In Massachusetts, 200 employed in these two states and Florida in August 1964, the department said.

A large share of the 86,200 expansion in domestic worker employment during the year resulted from the substitution of domestic workers for foreign workers.

In mid-August 1965, seasonal hired men numbered 1,137 million in major agricultural areas according to the Bureau of Employment Security. This included 1,200 foreign workers.

Grain Prices Generally Decline With Large Crops of Corn, Sorghum, Wheat

HYATTSVILLE, Md.—Grain prices generally declined during the month ended Oct. 15, the report said. Prices of corn, grain sorghum and soybeans were well above recent years, the department said.

Wheat and barley prices, the first three weeks of October, averaged slightly above a year ago while the other grains were lower. Wheat and barley prices fell below last year while feed grain stocks were 13 per cent smaller. Rye, oats and flaxseed stocks on Oct. 1 were larger than a year ago.

Wheat prices, generally advanced two to 10 cents since the start of the year. Soybean prices were mostly lower. Sorghum prices were mostly lower. Soybean prices were mostly lower. Soybean prices were mostly lower.

Wheat and barley prices, the first three weeks of October, averaged slightly above a year ago while the other grains were lower. Wheat and barley prices fell below last year while feed grain stocks were 13 per cent smaller. Rye, oats and flaxseed stocks on Oct. 1 were larger than a year ago.

Wheat prices, generally advanced two to 10 cents since the start of the year. Soybean prices were mostly lower. Sorghum prices were mostly lower. Soybean prices were mostly lower.

The exception is California prices in October, below last year. California supplies for 1965-66 of 23 million are well above recent years, the department said.

Wheat and barley prices, the first three weeks of October, averaged slightly above a year ago while the other grains were lower. Wheat and barley prices fell below last year while feed grain stocks were 13 per cent smaller. Rye, oats and flaxseed stocks on Oct. 1 were larger than a year ago.

Wheat prices, generally advanced two to 10 cents since the start of the year. Soybean prices were mostly lower. Sorghum prices were mostly lower. Soybean prices were mostly lower.

Wheat and barley prices, the first three weeks of October, averaged slightly above a year ago while the other grains were lower. Wheat and barley prices fell below last year while feed grain stocks were 13 per cent smaller. Rye, oats and flaxseed stocks on Oct. 1 were larger than a year ago.

Girl Named National 4-H Winner

NAMPA—17-year-old Miss Lynda Campbell has been named national 4-H Home Improvement winner.

She will receive a \$500 scholarship from the S and H foundation, national sponsor of the 4-H Home Improvement program according to Mrs. Joanna Matland, public relations representative for the Sperry and Hutchinson Co.

Miss Campbell is one of six national winners. Other states who have winners are Colorado, Mississippi, Nebraska, Pennsylvania and South Dakota.

Lynda is a member of the Friends' North Church and would like to attend either a Quaker college or Northwest Nazarene.

Foreign Farm Labor Off by 98 Per Cent

WASHINGTON—Foreign worker employment declined 98 per cent from August 1964 to August 1965, the Department of Labor reports.

Non-Mexicans were working anywhere in the country, although 6,540 had been employed a year earlier. Six hundred Japanese and Filipinos were employed in California this August compared with 1,309 last August.

Six hundred British West Indians were at work in Connecticut and Massachusetts this year. In Massachusetts, 200 employed in these two states and Florida in August 1964, the department said.

A large share of the 86,200 expansion in domestic worker employment during the year resulted from the substitution of domestic workers for foreign workers.

In mid-August 1965, seasonal hired men numbered 1,137 million in major agricultural areas according to the Bureau of Employment Security. This included 1,200 foreign workers.

Reservoir Unit to Elect Directors

American Falls Reservoir District will elect three directors this year. These directors will include two incumbents, are unopposed in the offices, which represent three valley precincts.

Edgar D. Vincent, Filer, seeks reelection in Precinct No. 6 covering the area near Tompkins. He has been nominated for the post. The incumbent from the precinct, Claude M. Gordon, declines reelection.

Any qualified voter who owns property in the precinct is eligible to cast ballots. Polls open from 1 to 7 p.m.

Other voting places include Precinct No. 1, Springfield, Jerome, and Precinct No. 2, North Side Canal Company, Jerome; Precinct No. 7, Twin Falls County Mutual Fire Insurance Co., Burley; and Precinct No. 4, Bliss School, Bliss.

Robert Houghland, Springfield; John M. Barker, Burley; Douglas T. Finckelberg, Jerome; and Frank W. Grimes, Tullie, are holdover members.

STUDEBAKER PARTS SALES & SERVICE

Cars and parts still in production, in stock and available to order.

CASSIA MOTORS
BURLY Ph. 678-5263

WATKINS-MIN-VITE S.T.R.T.C.H.E.S YOUR FRED DOLLAR

Would you spend a penny to save a nickel? Would you spend a dollar to save five? Well, a few cents spent on Mineral-Vitamin-fortification (to improve the "balance" of your daily ration) can give you BIG savings on total feed costs. A lot depends on the cows, of course, and what you're feeding now. But most dairymen find that about 2½¢ invested in Watkins-MIN-VITE (per head per day) will save 13¢ to 14¢ or more on feed. Interested? Call the seed 1-811-stop-by and tell you about it.

BLUE COAL
BLAZE
Top Quality Always at
WARBERG'S
733-7371

COOPER TIRES
RUGGED NYLON CORD BODY
New Weather Master sno tracs

Size	Block	Yield	Price
6.50-13	or 7.00-13	13.50	13.50
6.50-14	or 7.00-14	14.95	14.95
7.00-14	or 7.50-14	14.95	14.95
6.00-15	or 6.50-15	13.95	13.95
6.50-15	or 7.00-15	14.95	14.95
8.00-15	or 8.25-14	15.95	15.95
7.00-16	or 8.15-15	15.95	15.95
8.50-16	or 8.50-14	17.95	17.95
7.60-16	or 8.45-15	17.95	17.95

Ask about Cooper's new "You-Don't-Need-Tire-Insurance" TIRE GUARANTEE

ART YOUTS
688 Washington St. N.
Twin Falls 733-8224

COOPER TIRES
RUGGED NYLON CORD BODY
New Weather Master sno tracs

most wanted size... popularly priced

\$14.95

120-70-15 120-70-15 120-70-15

Ask about Cooper's new "You-Don't-Need-Tire-Insurance" TIRE GUARANTEE

Stuart Morrison TIRE CO.
206 4th Ave. W. (Truck Lane)
733-1464

The old reliable Suggests GIVE TOOLS FOR CHRISTMAS

27 Piece Socket Set
#R3500
34" Drive Set in Metal Box
Similar to Set Stock
Regular 27.99
Only **\$16.99**

SPARK PLUG TIRE PUMP
Complete with adapters to fit most cars, trucks, tractors.
Regular 8.25 Retail
Only **\$4.98**

3/4" Drive Torque Wrench
Regular \$16.50
Only **\$13.48**

GIANT SCREWDRIVER
Regular \$1.39
Only **97c**

13-Piece Combination Box End/Open End WRENCH SET
1/4 Inch thru 1" Size
Regular \$13.95
Only **\$9.75**

Battery Chargers
Electric Drills
Grinders
Plus - Plus

Tools from "The Old Reliable" Are Reliable Tools.

and Supply
250 Main Avenue N. Twin Falls

NEED HOLIDAY CASH
"SEE-LEN"
PAY NEXT YEAR
COME-IN-OR-PHONE-MAKE ARRANGEMENTS TODAY!

Mauss FINANCE COMPANY
203 Shoshone-St. N.
Elks Bldg., Twin Falls
733-9454

STUDEBAKER PARTS SALES & SERVICE
Cassia Motors
Burlly Ph. 678-5263

WATKINS-MIN-VITE S.T.R.T.C.H.E.S YOUR FRED DOLLAR

ART YOUTS
688 Washington St. N.
Twin Falls 733-8224

Stuart Morrison TIRE CO.
206 4th Ave. W. (Truck Lane)
733-1464

COOPER TIRES
RUGGED NYLON CORD BODY
New Weather Master sno tracs

STUDEBAKER PARTS SALES & SERVICE
Cassia Motors
Burlly Ph. 678-5263

You Are Invited OPEN HOUSE
SUN, DEC 5
1:30 - 3:30 P.M.
DDOR PRIZES
Decorating planning help
Do-it-yourself decorating supplies-Gift ideas-Gifts
Glorie
fox flora
611 BRADY AVE. N.

ASCS Unit Elected for Shoshone

SHOSHONE—Farmers elected recently to serve the Shoshone Agricultural, Soil Conservation and Conservation Committee are Eugene Alexander, Richfield; Clifford Stutzman, North Shoshone; and Joseph Taylor, Paul.

Alexander was elected for a three-year term and will serve as chairman of the committee for 1966. Stutzman was elected for a one-year term and will serve as vice chairman. Taylor will serve as a regular member.

Elected as alternates to the committee are Wayne Sorenson, north Shoshone, first alternate, and M. E. J. Jauregui, Dietrich, a second alternate. These men will serve as active members of the committee in the absence of one of the regular members.

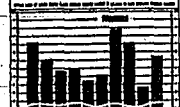
REMEMBER: OPEN HOUSE
SUNDAY, DEC. 5
1:30 to 5:30 P.M.

Door prizes and floral favors for all girls galore — Holiday decorations and arrangements to delight you and your guests: Do-drop in and see!

fox floral
641 MAIN AVE. W.

So I saved \$33.00 on car insurance with Farmers
Yeah, but...
and my Good Driver Discount will save me another \$24.00
I hear those money-savin' companies can't pay claims so good.
Wrong. Farmers has the best pay-out record of any big company.
Here—read the chart.

HOW THE TOP CAR INSURERS PAID OFF



EMIL T. OMLID, Dist. Mgr.
608 Main Ave. N. — Twin Falls — 731-7830

Salmon Falls Dam and powerhouse could serve as fallout shelter for about one-third of the people in Gooding County. Enough food is stored in the bowels

...of the structure to last for two weeks. Along with other facilities such as this, Gooding County could shelter and feed roughly two-thirds of its population. (Times-News photo)

66 Milk Production Is Expected to Rise Slightly

WASHINGTON (UPI)—The department said favorable weather, together with above-normal pasture and hay conditions in 1965, could boost production per cow even more.

The department said imports of dairy products this year are expected to be up about 10 percent from 1964; this would match the postwar high of \$15 billion in 1964.

USDA Has More Frozen Fruit

WASHINGTON (UPI)—Frozen fruit holdings in refrigerated warehouses on Nov. 1 totaled 1.3 billion pounds, the Board said. This compares with 985 million pounds a year earlier.

Frozen vegetable stocks were 1.4 billion pounds, compared to 1.3 billion a year earlier.

TRI-CHEM Liquid Embroidery

- Call Jean Druffik (mex.) 324-3688
- Elzara Ashley — 324-4748
- Delilah Baldwin — 744-2334
- Pat Pika — 343-5310
- Yvonne McBride — 732-9537
- Agnes Van Ripper — 428-2447

A New concept in Diesel engine efficiency

M. N. W. TURBO CHARGER

MORE DRAW-BAR POWER
BETTER FUEL ECONOMY
LONGER ENGINE LIFE

about installing one on YOUR TRACTOR

EQUIPMENT SALES & SERVICE RUPERT

Phone 456-6740
Way 24

Gooding County's Civil Defense Program Nets Well-Stocked Shelters

(Continued From Page 9)

...of the structure to last for two weeks. Along with other facilities such as this, Gooding County could shelter and feed roughly two-thirds of its population. (Times-News photo)

Increase in Food Prices Expected to Show in 1966

WASHINGTON (UPI)—The Agriculture Department said Thursday retail food prices will increase in 1966, but not as much as in 1965.

In a review of the national food situation, the department said retail prices are expected to average higher in 1966, based on the expected decline in per capita supplies.

66 Milk Production Is Expected to Rise Slightly

WASHINGTON (UPI)—The department said favorable weather, together with above-normal pasture and hay conditions in 1965, could boost production per cow even more.

USDA Has More Frozen Fruit

WASHINGTON (UPI)—Frozen fruit holdings in refrigerated warehouses on Nov. 1 totaled 1.3 billion pounds, the Board said. This compares with 985 million pounds a year earlier.

TRI-CHEM Liquid Embroidery

- Call Jean Druffik (mex.) 324-3688
- Elzara Ashley — 324-4748
- Delilah Baldwin — 744-2334
- Pat Pika — 343-5310
- Yvonne McBride — 732-9537
- Agnes Van Ripper — 428-2447

A New concept in Diesel engine efficiency

M. N. W. TURBO CHARGER

MORE DRAW-BAR POWER
BETTER FUEL ECONOMY
LONGER ENGINE LIFE

about installing one on YOUR TRACTOR

EQUIPMENT SALES & SERVICE RUPERT

Phone 456-6740
Way 24



CIVIL DEFENSE DIRECTOR for Gooding County, Bill Bunn, Wendell, vouchers for the taste of high-calorie crackers, part of food supplies stocked in one of Gooding County's fallout shelters. Food for two weeks is provided. (Times-News photo)

...of the structure to last for two weeks. Along with other facilities such as this, Gooding County could shelter and feed roughly two-thirds of its population. (Times-News photo)

Increase in Food Prices Expected to Show in 1966

WASHINGTON (UPI)—The Agriculture Department said Thursday retail food prices will increase in 1966, but not as much as in 1965.

66 Milk Production Is Expected to Rise Slightly

WASHINGTON (UPI)—The department said favorable weather, together with above-normal pasture and hay conditions in 1965, could boost production per cow even more.

USDA Has More Frozen Fruit

WASHINGTON (UPI)—Frozen fruit holdings in refrigerated warehouses on Nov. 1 totaled 1.3 billion pounds, the Board said. This compares with 985 million pounds a year earlier.

TRI-CHEM Liquid Embroidery

- Call Jean Druffik (mex.) 324-3688
- Elzara Ashley — 324-4748
- Delilah Baldwin — 744-2334
- Pat Pika — 343-5310
- Yvonne McBride — 732-9537
- Agnes Van Ripper — 428-2447

A New concept in Diesel engine efficiency

M. N. W. TURBO CHARGER

MORE DRAW-BAR POWER
BETTER FUEL ECONOMY
LONGER ENGINE LIFE

about installing one on YOUR TRACTOR

EQUIPMENT SALES & SERVICE RUPERT

Phone 456-6740
Way 24

SAVE LIKE MAD!

NAME BRAND GASOLINE

WIN A 1966 MUSTANG-FREE

Given Away Jan. 10th

STINKER STATION

177 Kinbely Road

Winter TIRE SALE!

Famous "Kelly-Springfield" Quality Tires... MUD and SNOW TREAD... at big savings right at the time you need them.

HURRY IN... THIS SALE FOR A LIMITED TIME ONLY! Look at these tempting savings... check your size and come in and see us now! All prices plus tax.

KELLY SPRINGFIELD TIRES

8:50x14 Explorer quality, 4-PLY NYLON, tubeless. Reg. 22.25	20.39
8:25x14 Exploryn quality, 4-PLY NYLON TUBELESS Reg. 29.59	19.59
8:15x15 Exploryn quality, 4-PLY NYLON TUBELESS Reg. 29.50	18.63
7:00x13 Exploryn quality, 4-PLY NYLON TUBELESS Reg. 24.80	16.20
EXPLORER TRACK PICK-UP TIRES	
7:00x15 Tube-type 6-PLY Reg. 42.55	29.53
6:50x16 Tube-type 6-PLY Reg. 35.37	24.75

ALL SIZES IN STOCK ALL ON SALE
Priced accordingly low. All prices are plus tax.

REMEMBER PRICE ALONE DON'T MAKE A Bargain... QUALITY COUNTS and Kelly-Springfield Tires are well known for outstanding quality.

KELLY SPRINGFIELD TIRES

BERNINA

FOR EMERGENCY PLUMBING SERVICE

BRACKETT'S

PHONE 733-2118
2000 225-5124 - 1647 or 522-2224

SALE! SHOP & SAVE NOW ON —

MANURE SPREADERS

No. 125 IH SPREADER, 125 Bu. size Reg. \$977	NOW \$765
No. 102 LH SPREADER, 100 Bu. size Reg. \$849	NOW \$675
No. 150 I H SPREADER, 150 Bu. size Reg. \$1067	NOW \$895
No. 160 LH SPREADER, 160 Bu. size Reg. \$1208	NOW \$1075
No. 134 WESTERN SPREADER, 14 ft. size Reg. \$1900	NOW \$1685

Hurry in and take advantage of this winter sale of Spreaders... you'll be glad you did, when you note the savings.

McVEYS, Inc.

KIMBERLY ROAD — TWIN FALLS

Production of Northside

Cows Listed

GOODING — During October, cows in the Gooding, Lincoln and Jerome Dairy Herd Improvement Association. No. 1, produced 60 or more pounds of butterfat, according to Sam Gardner, official secretary of the association.

Top cows included: No. 46, grade Holstein owned by Emmett Lambeth, Gooding, 112 pounds of milk and 2,673 pounds of butterfat; No. 86, grade Holstein owned by Bob Tupper, Hagerman, 115 pounds of milk and 2,312 pounds of milk; No. 1, grade Holstein owned by C. F. Lehman, Gooding, 93.2 pounds of milk and 2,312 pounds of milk; No. 2, grade Holstein owned by C. F. Lehman, Gooding, 93.2 pounds of milk and 2,312 pounds of milk; No. 3, grade Holstein owned by C. F. Lehman, Gooding, 93.2 pounds of milk and 2,312 pounds of milk; No. 4, grade Holstein owned by C. F. Lehman, Gooding, 93.2 pounds of milk and 2,312 pounds of milk; No. 5, grade Holstein owned by C. F. Lehman, Gooding, 93.2 pounds of milk and 2,312 pounds of milk; No. 6, grade Holstein owned by C. F. Lehman, Gooding, 93.2 pounds of milk and 2,312 pounds of milk; No. 7, grade Holstein owned by C. F. Lehman, Gooding, 93.2 pounds of milk and 2,312 pounds of milk; No. 8, grade Holstein owned by C. F. Lehman, Gooding, 93.2 pounds of milk and 2,312 pounds of milk; No. 9, grade Holstein owned by C. F. Lehman, Gooding, 93.2 pounds of milk and 2,312 pounds of milk; No. 10, grade Holstein owned by C. F. Lehman, Gooding, 93.2 pounds of milk and 2,312 pounds of milk; No. 11, grade Holstein owned by C. F. Lehman, Gooding, 93.2 pounds of milk and 2,312 pounds of milk; No. 12, grade Holstein owned by C. F. Lehman, Gooding, 93.2 pounds of milk and 2,312 pounds of milk; No. 13, grade Holstein owned by C. F. Lehman, Gooding, 93.2 pounds of milk and 2,312 pounds of milk; No. 14, grade Holstein owned by C. F. Lehman, Gooding, 93.2 pounds of milk and 2,312 pounds of milk; No. 15, grade Holstein owned by C. F. Lehman, Gooding, 93.2 pounds of milk and 2,312 pounds of milk; No. 16, grade Holstein owned by C. F. Lehman, Gooding, 93.2 pounds of milk and 2,312 pounds of milk; No. 17, grade Holstein owned by C. F. Lehman, Gooding, 93.2 pounds of milk and 2,312 pounds of milk; No. 18, grade Holstein owned by C. F. Lehman, Gooding, 93.2 pounds of milk and 2,312 pounds of milk; No. 19, grade Holstein owned by C. F. Lehman, Gooding, 93.2 pounds of milk and 2,312 pounds of milk; No. 20, grade Holstein owned by C. F. Lehman, Gooding, 93.2 pounds of milk and 2,312 pounds of milk; No. 21, grade Holstein owned by C. F. Lehman, Gooding, 93.2 pounds of milk and 2,312 pounds of milk; No. 22, grade Holstein owned by C. F. Lehman, Gooding, 93.2 pounds of milk and 2,312 pounds of milk; No. 23, grade Holstein owned by C. F. Lehman, Gooding, 93.2 pounds of milk and 2,312 pounds of milk; No. 24, grade Holstein owned by C. F. Lehman, Gooding, 93.2 pounds of milk and 2,312 pounds of milk; No. 25, grade Holstein owned by C. F. Lehman, Gooding, 93.2 pounds of milk and 2,312 pounds of milk; No. 26, grade Holstein owned by C. F. Lehman, Gooding, 93.2 pounds of milk and 2,312 pounds of milk; No. 27, grade Holstein owned by C. F. Lehman, Gooding, 93.2 pounds of milk and 2,312 pounds of milk; No. 28, grade Holstein owned by C. F. Lehman, Gooding, 93.2 pounds of milk and 2,312 pounds of milk; No. 29, grade Holstein owned by C. F. Lehman, Gooding, 93.2 pounds of milk and 2,312 pounds of milk; No. 30, grade Holstein owned by C. F. Lehman, Gooding, 93.2 pounds of milk and 2,312 pounds of milk; No. 31, grade Holstein owned by C. F. Lehman, Gooding, 93.2 pounds of milk and 2,312 pounds of milk; No. 32, grade Holstein owned by C. F. Lehman, Gooding, 93.2 pounds of milk and 2,312 pounds of milk; No. 33, grade Holstein owned by C. F. Lehman, Gooding, 93.2 pounds of milk and 2,312 pounds of milk; No. 34, grade Holstein owned by C. F. Lehman, Gooding, 93.2 pounds of milk and 2,312 pounds of milk; No. 35, grade Holstein owned by C. F. Lehman, Gooding, 93.2 pounds of milk and 2,312 pounds of milk; No. 36, grade Holstein owned by C. F. Lehman, Gooding, 93.2 pounds of milk and 2,312 pounds of milk; No. 37, grade Holstein owned by C. F. Lehman, Gooding, 93.2 pounds of milk and 2,312 pounds of milk; No. 38, grade Holstein owned by C. F. Lehman, Gooding, 93.2 pounds of milk and 2,312 pounds of milk; No. 39, grade Holstein owned by C. F. Lehman, Gooding, 93.2 pounds of milk and 2,312 pounds of milk; No. 40, grade Holstein owned by C. F. Lehman, Gooding, 93.2 pounds of milk and 2,312 pounds of milk; No. 41, grade Holstein owned by C. F. Lehman, Gooding, 93.2 pounds of milk and 2,312 pounds of milk; No. 42, grade Holstein owned by C. F. Lehman, Gooding, 93.2 pounds of milk and 2,312 pounds of milk; No. 43, grade Holstein owned by C. F. Lehman, Gooding, 93.2 pounds of milk and 2,312 pounds of milk; No. 44, grade Holstein owned by C. F. Lehman, Gooding, 93.2 pounds of milk and 2,312 pounds of milk; No. 45, grade Holstein owned by C. F. Lehman, Gooding, 93.2 pounds of milk and 2,312 pounds of milk; No. 46, grade Holstein owned by C. F. Lehman, Gooding, 93.2 pounds of milk and 2,312 pounds of milk; No. 47, grade Holstein owned by C. F. Lehman, Gooding, 93.2 pounds of milk and 2,312 pounds of milk; No. 48, grade Holstein owned by C. F. Lehman, Gooding, 93.2 pounds of milk and 2,312 pounds of milk; No. 49, grade Holstein owned by C. F. Lehman, Gooding, 93.2 pounds of milk and 2,312 pounds of milk; No. 50, grade Holstein owned by C. F. Lehman, Gooding, 93.2 pounds of milk and 2,312 pounds of milk; No. 51, grade Holstein owned by C. F. Lehman, Gooding, 93.2 pounds of milk and 2,312 pounds of milk; No. 52, grade Holstein owned by C. F. Lehman, Gooding, 93.2 pounds of milk and 2,312 pounds of milk; No. 53, grade Holstein owned by C. F. Lehman, Gooding, 93.2 pounds of milk and 2,312 pounds of milk; No. 54, grade Holstein owned by C. F. Lehman, Gooding, 93.2 pounds of milk and 2,312 pounds of milk; No. 55, grade Holstein owned by C. F. Lehman, Gooding, 93.2 pounds of milk and 2,312 pounds of milk; No. 56, grade Holstein owned by C. F. Lehman, Gooding, 93.2 pounds of milk and 2,312 pounds of milk; No. 57, grade Holstein owned by C. F. Lehman, Gooding, 93.2 pounds of milk and 2,312 pounds of milk; No. 58, grade Holstein owned by C. F. Lehman, Gooding, 93.2 pounds of milk and 2,312 pounds of milk; No. 59, grade Holstein owned by C. F. Lehman, Gooding, 93.2 pounds of milk and 2,312 pounds of milk; No. 60, grade Holstein owned by C. F. Lehman, Gooding, 93.2 pounds of milk and 2,312 pounds of milk; No. 61, grade Holstein owned by C. F. Lehman, Gooding, 93.2 pounds of milk and 2,312 pounds of milk; No. 62, grade Holstein owned by C. F. Lehman, Gooding, 93.2 pounds of milk and 2,312 pounds of milk; No. 63, grade Holstein owned by C. F. Lehman, Gooding, 93.2 pounds of milk and 2,312 pounds of milk; No. 64, grade Holstein owned by C. F. Lehman, Gooding, 93.2 pounds of milk and 2,312 pounds of milk; No. 65, grade Holstein owned by C. F. Lehman, Gooding, 93.2 pounds of milk and 2,312 pounds of milk; No. 66, grade Holstein owned by C. F. Lehman, Gooding, 93.2 pounds of milk and 2,312 pounds of milk; No. 67, grade Holstein owned by C. F. Lehman, Gooding, 93.2 pounds of milk and 2,312 pounds of milk; No. 68, grade Holstein owned by C. F. Lehman, Gooding, 93.2 pounds of milk and 2,312 pounds of milk; No. 69, grade Holstein owned by C. F. Lehman, Gooding, 93.2 pounds of milk and 2,312 pounds of milk; No. 70, grade Holstein owned by C. F. Lehman, Gooding, 93.2 pounds of milk and 2,312 pounds of milk; No. 71, grade Holstein owned by C. F. Lehman, Gooding, 93.2 pounds of milk and 2,312 pounds of milk; No. 72, grade Holstein owned by C. F. Lehman, Gooding, 93.2 pounds of milk and 2,312 pounds of milk; No. 73, grade Holstein owned by C. F. Lehman, Gooding, 93.2 pounds of milk and 2,312 pounds of milk; No. 74, grade Holstein owned by C. F. Lehman, Gooding, 93.2 pounds of milk and 2,312 pounds of milk; No. 75, grade Holstein owned by C. F. Lehman, Gooding, 93.2 pounds of milk and 2,312 pounds of milk; No. 76, grade Holstein owned by C. F. Lehman, Gooding, 93.2 pounds of milk and 2,312 pounds of milk; No. 77, grade Holstein owned by C. F. Lehman, Gooding, 93.2 pounds of milk and 2,312 pounds of milk; No. 78, grade Holstein owned by C. F. Lehman, Gooding, 93.2 pounds of milk and 2,312 pounds of milk; No. 79, grade Holstein owned by C. F. Lehman, Gooding, 93.2 pounds of milk and 2,312 pounds of milk; No. 80, grade Holstein owned by C. F. Lehman, Gooding, 93.2 pounds of milk and 2,312 pounds of milk; No. 81, grade Holstein owned by C. F. Lehman, Gooding, 93.2 pounds of milk and 2,312 pounds of milk; No. 82, grade Holstein owned by C. F. Lehman, Gooding, 93.2 pounds of milk and 2,312 pounds of milk; No. 83, grade Holstein owned by C. F. Lehman, Gooding, 93.2 pounds of milk and 2,312 pounds of milk; No. 84, grade Holstein owned by C. F. Lehman, Gooding, 93.2 pounds of milk and 2,312 pounds of milk; No. 85, grade Holstein owned by C. F. Lehman, Gooding, 93.2 pounds of milk and 2,312 pounds of milk; No. 86, grade Holstein owned by C. F. Lehman, Gooding, 93.2 pounds of milk and 2,312 pounds of milk; No. 87, grade Holstein owned by C. F. Lehman, Gooding, 93.2 pounds of milk and 2,312 pounds of milk; No. 88, grade Holstein owned by C. F. Lehman, Gooding, 93.2 pounds of milk and 2,312 pounds of milk; No. 89, grade Holstein owned by C. F. Lehman, Gooding, 93.2 pounds of milk and 2,312 pounds of milk; No. 90, grade Holstein owned by C. F. Lehman, Gooding, 93.2 pounds of milk and 2,312 pounds of milk; No. 91, grade Holstein owned by C. F. Lehman, Gooding, 93.2 pounds of milk and 2,312 pounds of milk; No. 92, grade Holstein owned by C. F. Lehman, Gooding, 93.2 pounds of milk and 2,312 pounds of milk; No. 93, grade Holstein owned by C. F. Lehman, Gooding, 93.2 pounds of milk and 2,312 pounds of milk; No. 94, grade Holstein owned by C. F. Lehman, Gooding, 93.2 pounds of milk and 2,312 pounds of milk; No. 95, grade Holstein owned by C. F. Lehman, Gooding, 93.2 pounds of milk and 2,312 pounds of milk; No. 96, grade Holstein owned by C. F. Lehman, Gooding, 93.2 pounds of milk and 2,312 pounds of milk; No. 97, grade Holstein owned by C. F. Lehman, Gooding, 93.2 pounds of milk and 2,312 pounds of milk; No. 98, grade Holstein owned by C. F. Lehman, Gooding, 93.2 pounds of milk and 2,312 pounds of milk; No. 99, grade Holstein owned by C. F. Lehman, Gooding, 93.2 pounds of milk and 2,312 pounds of milk; No. 100, grade Holstein owned by C. F. Lehman, Gooding, 93.2 pounds of milk and 2,312 pounds of milk.

NEWLY ELECTED ASC COMMITTEEMEN

Carl Boyd, Twin Falls, right center, Guy Kluyton, Cardwell, left center, center, and Milton Hall, right center, were elected to the Twin Falls ASC office and Harold Blackburn, Twin Falls, ASC farm-

Three Committeemen Chosen For Twin Falls County ASC

Three Twin Falls County ASC committeemen were elected to a one-year term as committee chairman, and Austin Moore, Hagen, was elected to a one-year term as a regular member.

Kenneth Poe, Twin Falls, was chosen first alternate for a one-year term, and Milton Hall, Kimberly, was named to a one-year term as second alternate.

Declo Man Is Supervising Development Near Payette

Chet Hyton, who operates 4,000 acres of land on the Payette River, is supervising the development of a 100-acre tract near Payette.

Booklet to Try to Limit Overspending

The Agricultural Department is publishing a booklet explaining the best way for families to avoid overspending in the winter months.

World Sugar Crop Is Said Near Record

The Agricultural Department's first sugar forecast for the year predicts a record world production of sugar during the 1955-56 marketing year.

Check Our Prices - Test The Quality of Our Complete Line of Formulated Feeds

• Range Pellets
• Fresh Blood
• Dairy Feeds
• Friskies (Dog and Cat Food)
• Stock
• Fish Raising (all kinds)

Custom Mixing, Pelleting

Phone 733-4241
Twin Falls

LB MILLING CO.
A Division of Carnation Co.



NEWLY ELECTED ASC COMMITTEEMEN Carl Boyd, Twin Falls, right center, Guy Kluyton, Cardwell, left center, center, and Milton Hall, right center, were elected to the Twin Falls ASC office and Harold Blackburn, Twin Falls, ASC farm-

FHA Has Loaned \$2 Million to Idaho Co-ops

BOISE — Farmers Home Administration Economic Opportunity loan totaling over \$2 million—has been made this year through Sept. 23 to 174 rural cooperatives serving some 100,000 low-income people in 25 states.

Averages for Gooding Cows Are Reported

GOODING — Dairy cows on production testing in the Gooding, Lincoln, Jerome Dairy Herd Improvement Association No. 1 during October averaged 34.4 pounds of milk per cow and 908 pounds of milk reports.

Increase in Production of Eggs Likely

WASHINGTON (UPI) — The Agricultural Department says a 10 percent increase in egg production in 1955 is likely to be up perhaps 20 percent from the 170 million cases currently estimated for 1955.

Do You Need Money for DAIRY HERD OR BUILDING IMPROVEMENT?

For a better, easier, more profitable operation with your Dairy Project... see us for a dependable loan.

Founded by and for farmers—Production-Credit is a loan-making organization that has helped thousands of farmers in a successful farming operation.

Visit our nearest office and get all the facts today.

SOUTHERN IDAHO PRODUCTION CREDIT ASSOCIATION

MAIN OFFICE: TWIN FALLS, 733-8411

OFFICES: BURLEY, GOODING, 578-7081

Shoshone BLM District Eyes Projects of Past Season

SHOSHONE — With the field season coming gradually to a close, the Bureau of Land Management is compiling a list of projects of the past year.

Although wet spring weather delayed the start of operations, favorable fall weather has more than made up for the loss of time.

The early part of the season saw the completion of 6,500 acres of chemical brush control. Forests were awarded the contract for this work which was accomplished through the use of helicopter.

Reeder's Flying Service, Twin Falls, was a sub-contractor on several of the projects located in the Shoshone district.

Changing weather and pest infestations will affect demand for pesticides in some areas, the department said, but these factors are not likely to change the general use of chemical pest control.

The department said the value of shipments of pesticides for 1954 was \$4,000,000, an increase of 50 percent over 1953.

Robinson reported that barley production in 1955 is estimated at 161 million bushels, a 12 percent increase over 1954.

Robinson reported that barley production in 1955 is estimated at 161 million bushels, a 12 percent increase over 1954.

Robinson reported that barley production in 1955 is estimated at 161 million bushels, a 12 percent increase over 1954.

Robinson reported that barley production in 1955 is estimated at 161 million bushels, a 12 percent increase over 1954.

Robinson reported that barley production in 1955 is estimated at 161 million bushels, a 12 percent increase over 1954.

Robinson reported that barley production in 1955 is estimated at 161 million bushels, a 12 percent increase over 1954.

Sonic Hatch

WASHINGTON (AP) — Eggs exposed to jet-propelled sonic waves, which serve to break out at least as good as those of eggs not so exposed.

The Air Force Surgeon General's office suggested that the supersonic airplane blasts may have had a slight beneficial effect upon the embryo chicks, possibly by increasing the blood circulation rate.

With the Black Canyon Cattleman's Association, "Many other less dramatic projects have been completed through the use of the value and productivity of the public domain."

While the current developments have been relatively slow, more extensive developments are planned in the near future.

These lands are used under permit in cooperation with stock operators and provide for approximately 200,000 sheep and 40,000 cattle annually.

In addition, an estimated 7,500 deer, 300 elk, and 300 antelope are seen all or part of the year on these same lands.

Residues to be measured. A program to measure residues in people, fish, wildlife, food, feed, soil and water was approved by the Federal Committee on Pest Control.

Some see what a beautiful collection of local, hand-made folk art you can have for you, any place.

fox floral

547 MAIN AVE. W.

547 MAIN AVE. W.

547 MAIN AVE. W.

38 Cows in Jerome Area

Make Record

JEROME.—During the 31 days of October, 38 cows in the Gooding-Lincoln-Jerome Dairy Herd Improvement Association contest have produced 70 more pounds of butterfat, according to Ben Russell, official tester.

Two of these cows produced over 100 pounds of butterfat, another three produced over 90 pounds, and an additional nine cows produced over 80 pounds of butterfat.

Sherry, grade Holstein, owned by Henry Reid, Jerome, produced 3,120 pounds of milk and 121 pounds of butterfat. Tiny, grade Holstein, owned by Henry Reid, Jerome, produced 2,810 pounds of milk and 117 pounds of butterfat. Blackie, grade Holstein, owned by Henry Reid, Jerome, produced 2,257 pounds of milk and 92.5 pounds of butterfat.

Don't forget the registered Holstein owned by Lyle F. Anderson, Jerome, produced 2,430 pounds of milk and 82 pounds of butterfat. Pam, grade Holstein, owned by Don Thibault, Jerome, produced 2,313 pounds of milk and 88 pounds of butterfat. Skovla, registered Holstein, owned by Frank Houston, Jerome, produced 2,230 pounds of milk and 89 pounds of butterfat. Bloss, grade Holstein, owned by Henry Reid, Jerome, produced 2,230 pounds of milk and 88.6 pounds of butterfat. Alison, registered Holstein, owned by Henry Reid, Jerome, produced 2,213 pounds of milk and 88 pounds of butterfat.

ASC Supervisors Are Re-Elected

Glenn Nelson, Twin Falls, Truman Clark, Castleford, and Ralph Schmitt, Filer, have been re-elected to the Twin Falls Soil Conservation Service Board of Supervisors, Clarence Henderson, unit conservation, announced.

Each of the supervisors will serve for a four-year term. All three have been members of the board since 1950.

Produced 1,975 pounds of milk and 73 pounds of butterfat. Produced 1,850 pounds of milk and 78 pounds of butterfat. Produced 1,850 pounds of milk and 78 pounds of butterfat. Produced 1,850 pounds of milk and 78 pounds of butterfat.

Produced 1,850 pounds of milk and 78 pounds of butterfat. Produced 1,850 pounds of milk and 78 pounds of butterfat. Produced 1,850 pounds of milk and 78 pounds of butterfat. Produced 1,850 pounds of milk and 78 pounds of butterfat.

Produced 1,850 pounds of milk and 78 pounds of butterfat. Produced 1,850 pounds of milk and 78 pounds of butterfat. Produced 1,850 pounds of milk and 78 pounds of butterfat. Produced 1,850 pounds of milk and 78 pounds of butterfat.

Produced 1,850 pounds of milk and 78 pounds of butterfat. Produced 1,850 pounds of milk and 78 pounds of butterfat. Produced 1,850 pounds of milk and 78 pounds of butterfat. Produced 1,850 pounds of milk and 78 pounds of butterfat.

Produced 1,850 pounds of milk and 78 pounds of butterfat. Produced 1,850 pounds of milk and 78 pounds of butterfat. Produced 1,850 pounds of milk and 78 pounds of butterfat. Produced 1,850 pounds of milk and 78 pounds of butterfat.

Produced 1,850 pounds of milk and 78 pounds of butterfat. Produced 1,850 pounds of milk and 78 pounds of butterfat. Produced 1,850 pounds of milk and 78 pounds of butterfat. Produced 1,850 pounds of milk and 78 pounds of butterfat.



Donald Everingham Jr., Idaho Falls, was named one of 12 national winners in the national 4-H Club Tractor Program.

L.F. Youth Named Best 4-H Driver

CHICAGO.—Donald Everingham Jr., 17, Idaho Falls, is the winner of a \$500 scholarship for his outstanding achievement in the 4-H Club Tractor Program.

ASC Supervisors Are Re-Elected

Glenn Nelson, Twin Falls, Truman Clark, Castleford, and Ralph Schmitt, Filer, have been re-elected to the Twin Falls Soil Conservation Service Board of Supervisors, Clarence Henderson, unit conservation, announced.

Produced 1,850 pounds of milk and 78 pounds of butterfat. Produced 1,850 pounds of milk and 78 pounds of butterfat. Produced 1,850 pounds of milk and 78 pounds of butterfat. Produced 1,850 pounds of milk and 78 pounds of butterfat.

Produced 1,850 pounds of milk and 78 pounds of butterfat. Produced 1,850 pounds of milk and 78 pounds of butterfat. Produced 1,850 pounds of milk and 78 pounds of butterfat. Produced 1,850 pounds of milk and 78 pounds of butterfat.

Produced 1,850 pounds of milk and 78 pounds of butterfat. Produced 1,850 pounds of milk and 78 pounds of butterfat. Produced 1,850 pounds of milk and 78 pounds of butterfat. Produced 1,850 pounds of milk and 78 pounds of butterfat.

Produced 1,850 pounds of milk and 78 pounds of butterfat. Produced 1,850 pounds of milk and 78 pounds of butterfat. Produced 1,850 pounds of milk and 78 pounds of butterfat. Produced 1,850 pounds of milk and 78 pounds of butterfat.

Produced 1,850 pounds of milk and 78 pounds of butterfat. Produced 1,850 pounds of milk and 78 pounds of butterfat. Produced 1,850 pounds of milk and 78 pounds of butterfat. Produced 1,850 pounds of milk and 78 pounds of butterfat.

Produced 1,850 pounds of milk and 78 pounds of butterfat. Produced 1,850 pounds of milk and 78 pounds of butterfat. Produced 1,850 pounds of milk and 78 pounds of butterfat. Produced 1,850 pounds of milk and 78 pounds of butterfat.

4-H Club Project Winners for 1963 Are Announced for Twin Falls County

The 1963 4-H club project winners for Twin Falls County were announced this week by county extension agricultural agent.

Each of the winners received an award medal for outstanding overall project work for the year. The winners were judged for the amount of project records, performance and fair awards, and leadership and achievement attitudes.

The awards are a summation of all their activity and work throughout the year, "Genn" reported.

County achievement winners are Dennis Conrad, Castleford; Ricky Kruse, Filer; Mary Lynn Barkhart and Beth Britt, both Twin Falls. Agricultural winners are Dan Shewmaker, Glen Shewmaker and Brent Claiborn, Kimberty; and Linda Morrill, Kimberty.

4-H automotive winners are Brent Claiborn, Kimberty, Cindy Leazer, and Diane Washbrook, both Twin Falls. Beef winners are Dan Shewmaker, Glen Shewmaker and Bonnie Floss, all Kimberty, and Jane Anderson, Twin Falls.

Propane Service Twin Falls

End weather and painting worries for years on and by having us cover your house this fall with a new JOHN-MANVILLE GUARANTEED ROOF... and/or... plus satisfying beauty to your home practical ALUMINUM SIDING.

Give your home a FACE-LIFT

ADD YEARS OF SERVICE

COLORFUL... SERVICEABLE... BEAUTIFUL colors to enhance any surroundings.

DAN DANIELS ROOFING COMPANY

Give Me a Place to Stand and I'll Roof You

151 ROSE ST. TWIN FALLS 733-2179

YOU ARE INVITED TO Attend the Filer I.O.O.F. SMORGASBORD

Sat., Dec. 4
5 to 8:30 p.m.
Filer-Grange Hall

All You Can Eat... HAM... TURKEY

SALADS... ENTREES AND ALL THE TRIMMINGS!

Adults 1.50 plus tax. School children 75¢ plus tax.

Sponsored by the Odd Fellows and Rebekah Lodges of Filer.

Blaine ASC Unit Names Officers

RAILEY—Farmers elected to serve on the Agricultural Society...

Don't Neglect Slipping FALSE TEETH

Do false teeth slip, slip or wobble... Blacken Appliance Co. Furniture

Professional Laying CARPET for Christmas

No Money Down. 733-1804 Twin Falls

Blacken Appliance Co. Furniture

WE SERVE TO SERVE AGAIN

billation and Conservation first alternate, and Debra... committee for Blaine county... are announced...

IT'S NOT TOO LATE TO ENROLL FOR WINTER CLASSES

DAY AND EVENING

CAREER COURSES:

Secretarial—Accounting—Business Administration—Stenographic

SHORT COURSES:

Clerk Typist—Typewriting—Dictation—Filing—Bookkeeping—Comptometry—Office Machines—Shorthand

Phone 733-6522 or come in for full information

TWIN FALLS BUSINESS COLLEGE

Those with 10% more education often get 50% more INCOME

FARM AUCTION

EVERYTHING MUST GO SAVE!

Located from Filer, Idaho, 2 miles North, 2 miles West and 2 1/2 miles North or 2 miles West of Dead-Man's Corner and 2 1/2 miles North on the Crystal Springs Road.

MONDAY, DECEMBER 6

SALE TIME: 11:00 A.M. LUNCH ON GROUNDS BY CEDAR DRAW GRANGE

TRACTORS

1952 IHC M tractor, double front end—IHC Farmall 200 tricycle type—IHC Farmall C tricycle type—THESE TRACTORS HAVE GOOD RUBBER AND RIGID GOOD.

TRUCK

1948 Chevrolet 1 1/2-ton truck with special built pick-up.

SWATHER & BINDER

Heston Swather John Deere rubber tire binder, works good.

STATIONARY THRESHING MACHINES

3 Wood Brothers threshing machines for Clover, Beans and Grain, 21-inch.

MACHINERY

2 IHC cultivators for the C and 200 tractors. IHC 3-point hitch for M or H, like new. IHC hang-on mower with cylinder. IHC cultivator bars, with tools. IHC bean cutter, hand lever. IHC old type manure loader. Van Brunt wheel type spring shank cultivator. Feed ditch cleaner. Scaper blade, full turn, no till. John Deere 3-point 2-row corn planter. Bean puller, fits on 2 1/2" bar. Heavy duty McDeering Corrugator, spring shank type. John Deere beet and bean planter with phosphate attachment. McDeering tractor manure spreader on rubber. Dixie Beet Thinner. McDeering No. 9 flat-tion hay chopper. Single Cullipacker, 8-ft. Cull-mulcher. 3-pt. handy box, fits on back of tractor. Steel secker tank on stand. Horse manure spreader. Colored corrugator. Moline double disc wood box grain drill. Moline phosphate spreader, steel wheels. McDeering 4-bar side rake. 12-ft. dump rake—Hay derrick. Walking plow—Cattle collar—2 Fresno. Swain 6-ft. hand lever. Rubber tire wagon, duals all around. 2 old wagons—Box wagon.

HARROWS-DISCS

2 Very Good 3-section wood harrows, solid draw bar. John Deere Melroe type harrow. Two-section wood harrow. John Deere wheel type 9-ft. tandem disc. 2-section spring tooth harrow. 2-section flexible steel harrow.

SHOP TOOLS—MISCELLANEOUS

THIS IS 45 YEARS OF ACCUMULATIONS Many cultivator tools, sweeps, clamps, cut-aways tractor umbrellas, 2 wheel harrows, electric grinder, Air compressor (no tank on it), Dahomers, anvil, vise, slide cutters, markers, PTO sprayer, grass guns, press drill, tap & die, wheel puller, large tap, barrels, forks, shovels, etc.

HOUSEHOLD GOODS

There will be a small amount of household items. ONE DOZEN—AUSTRALIA WHITE LAYING HENS—OTHER ITEMS.

Registered H.I. Brand—Roto-type gas lawn mower.

HAY AND STRAW

14 ton second cutting baled hay. 12 ton of third cutting baled hay. 13 ton of clover, baled. 30 ton of first-cutting baled hay. 700 bales of straw.

TERMS: CASH DAY OF SALE

HOWARD (Sandy) LaPRAY Estate, Owner

AUCTIONEERS: HAROLD KLAAS & JOE DUFFEK, 324-2683. CLERK: RODNEY PAULS, STOCKMEN'S REALTY, JEROME 324-4845.

PERSONALIZED CHRISTMAS CARDS

Exclusively yours

Choose your own cards from our outstanding selection of:

- * RELIGIOUS * FAMILY
- * PHOTO * WESTERN
- * HUMOROUS * SPORTS
- * BUSINESS * SCENIC

Famous artists including "Charlie Russell"

Printed to suit your budget

Showing showing by appointment

The Hills of Idaho Bank & Trust Bldg. Phone 733-4562

Times-News Comics for the Entire Family

Wild West

ACROSS

1 Phamous (6)
2 Law enforcement (6)
3 Above a whopper (6)
4 Horsepower (6)
5 Thriller (6)
6 Gift (6)
7 Locomotive (6)
8 Label (6)
9 Locomotive (6)
10 Locomotive (6)
11 Locomotive (6)
12 Locomotive (6)

DOWN

13 Locomotive (6)
14 Locomotive (6)
15 Locomotive (6)
16 Locomotive (6)
17 Locomotive (6)
18 Locomotive (6)
19 Locomotive (6)
20 Locomotive (6)
21 Locomotive (6)
22 Locomotive (6)
23 Locomotive (6)
24 Locomotive (6)
25 Locomotive (6)

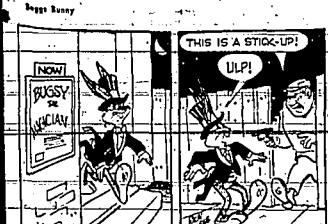
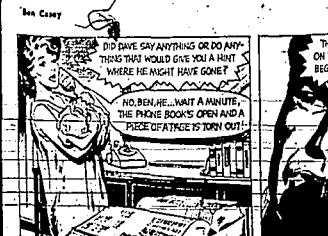
Answer to Previous Puzzle

1 Excellent
2 Present
3 Black mineral
4 Put on
5 Letter carrier
6 Negro of
7 Basketball
8 Basketball
9 Newspaper
10 Tagged man
11 Before
12 Information
13 Night birds
14 Greek letter
15 Water
16 Santa's group
17 Monitor lizard
18 Council (dial)
19 Telling
20 Yellow
21 Traz
22 Traz
23 Traz
24 Traz
25 Traz



2 3 4 5 6 7 8 9 10 11 12

13 14 15 16 17 18 19 20 21 22 23 24 25 26 27 28 29 30 31 32 33 34 35 36 37 38 39 40 41 42 43 44 45 46 47 48 49 50 51 52 53 54 55 56



McDaniel and Siebern Sent to California Clubs

MIAMI BEACH, Fla. (AP)—The San Francisco Giants acquired relief specialist Jim McDaniel from the Chicago Cubs and Norm Siebern from the Baltimore Orioles in trades that highlighted the major league baseball meetings Thursday. The Cubs acquired two young players from the Giants, pitcher Bill Hands and catcher Randy Hundley, in exchange for the 29-year-old McDaniel. The Orioles also threw in reserve outfielder Don Landrum.

Open-End Elk Hunt Closure Set Saturday

SALMON—The Idaho Fish and Game Department announced today that the open-end elk hunt in Unit 21A will close Saturday, Dec. 4. The area is generally east of U.S. Highway 93, south of the Salmon and Lost Trail Pass. The unit has had 46 elk checked out of it to date and the desired harvest of 60 animals is expected to be reached by Saturday, Ralph Pherson, Salmon regional game warden for the department, announced. Elk hunting continues in Unit 21A with no closing date announced. The area is north of Idaho 25, between Salmon and Leodore. At the present time 12 of the 35 elk permitted have been killed. Any other unit open in the Salmon area for hunting is Unit 21, near the Fork of the Salmon River, which is open for both elk and deer and will close Saturday.

Vandal Fans End Football Film Showings

Vandal Boosters of the Twin Falls area rang down the curtain on the football season with the 10th game film showing of the season. President Hank Woodall estimated about 500 to 600 people attended the first time film and perhaps the 1965 football highlights showing this month to get some things going. Woodall said, "We have the ball rolling now and we will let it go." He added Coach Steve Mear probably will be available to speak at a special meeting in December and added the boosters of the year for the Area Boosters will be helping stage the "third time film" at the Idaho State University and Idaho State University. Those two clubs are slated to play in Twin Falls March 7.

NFL Says It Has Lost 16 Players

NEW YORK (AP)—The National Football League announced today that it has signed 10 and lost only 16 of the 113 drafted players it can select this time.

Of the 105 players drafted Saturday and Sunday in the 30-hour NFL draft session, 74 are football players and 31 are college eligibility and 49 are scheduled to play in the various bowl games. Players in bowl games can not be signed until those games have been completed.

SETS SITE WASHINGTON (AP)—The women's basketball committee of the Amateur Athletic Union Thursday awarded Gilliam, N.M., its annual basketball tournament for 1967, 1968 and 1969.

All-Americans Highlight West Shrine Game Roster

SAN FRANCISCO (AP)—The All-Americans highlight both the offensive and defensive platoons of the West squad which meets the East at the Shrine Stadium, Dec. 21 in the 21st annual Shrine football game.

Head coach Tommy Kelly of Garrett of Southern California, who set a career rushing record of 1,232 yards in three seasons during the program here in 1964, is the offensive coach.

Linebacker Carl McAdams is the All-American on the defensive side.

A squad of 25 players representing 16 schools was named Thursday.

The East squad will be coached by John Ralston of Stanford. Able to play both ways, Ralston is a former end and Ron Shriver of Utah State and the quarterback Dave Tobe of Oregon.

Quarterbacks are Paul Smith of the Air Force, Tom Hull of the Oregon and Stan Quintana of New Mexico.

In addition to Garrett at halfback are Ray Hawkins of Stanford, Ron Hawkins of Arizona, Ron Medved of Washington and Craig Richey of Stan. Ford, the latter a defensive specialist.

Walt Garrison, a 210-pounder of the East, is a star and Charles McCoy of the West is a star.

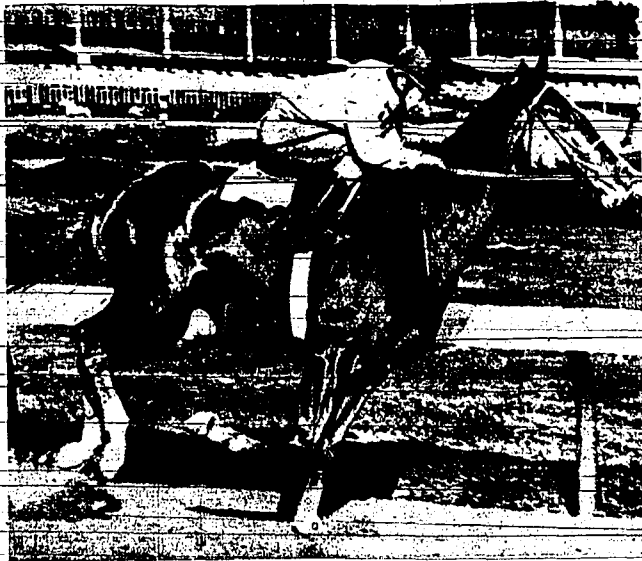
Quarterback is Greg Kent, a 270-pound giant from Utah. Pat Matson, 250, of Oregon, is the running back from Washington and Wayne Foster, 225, from Washington State.

Linebacker is Larry Lee of Oklahoma State, is the best of the guards with Chuck Artobio of Southern California and the center is Chuck Artobio of Southern California and the center is Chuck Artobio of Southern California.

John Garamendi at 225, Tony and Dick Speck, each a tackle, are listed starters.

Jack O'Dillovich of Oregon State, 230, teams with McAdams and linebacker.

Ralston will be assisted by Ray Nege of Utah and Gomez Jones of Oklahoma.



HORSE OF THE YEAR is Moccasin, already in eight races, shown here during a workout. The horse already has selected the best 2-year-old filly and is the first filly and 2-year-old to win horse of the year honors. (AP wirephoto)

Midwest Dominates UPI All-American 11

NEW YORK (UPI)—The Midwest in general and Michigan and Arkansas, the No. 2 team, in particular dominated the United Press International All-American college football team for 1965.

The 44 players selected as the best in the land by the nation's sportswriters and broadcasters were divided into offensive and defensive platoons.

Led by Michigan State, the national No. 1 team, the Midwest landed 16 players on the mythical squad, double the number from any other geographical section of the country. Six players from the Big Ten champions were voted on the team.

Named as the 11 top offensive players by the 242 voters who participated in the balloting were:

Ends: Howard Twilley, Tulsa, and Freeman White, Nebraska. Tackled: Glen Ray Hines, Arkansas, and Sam Ball, Kentucky.

Guards: Dick Arrington, Notre Dame, and Douglas Van Horn, Ohio State.

Center: Paul Crane, Alabama.

Quarterback: Bob Griese, Purdue.

Halfbacks: Mike Garrett, Southern California, and Donny Anderson, Texas Tech.

Fullback: Jim Grabowski, Illinois.

played on both offense and defense, received 187 votes, followed by Rasmus with 160. Nobis was one of many players who received votes for both the offensive and defensive roles. In each case, all of Nobis' votes were credited to Smith is the big man on the defensive team—where averages 216 pounds per man, Smith, 67, weighs 208.

Nobis and Grabowski are all-players selected by the national All-Americans. They were the only juniors chosen on the 1964 UPI All-American. Twilley, Yearby, Garrett and Anderson were on the UPI second all-players and well over six feet in height, with times the tallest at 6-5. The backfield averages just a shade under 200 pounds. Grabowski, who broke all of Fred Granger's old rushing records—the offensive and defensive at Illinois, the bestest at 219.

Smith is the big man on the defensive team—where averages 216 pounds per man, Smith, 67, weighs 208.

Nobis and Grabowski are all-players selected by the national All-Americans. They were the only juniors chosen on the 1964 UPI All-American. Twilley, Yearby, Garrett and Anderson were on the UPI second all-players and well over six feet in height, with times the tallest at 6-5. The backfield averages just a shade under 200 pounds. Grabowski, who broke all of Fred Granger's old rushing records—the offensive and defensive at Illinois, the bestest at 219.

Filer Edges Wood River In Wrestling

FILER—Thanks to three forfeits in the top weights, the Filer Wildcats opened the wrestling season Thursday night with a light 28-26 victory over the Wood River Wolverines.

Man was pinned by Dave Blyling; 115 pounds—Glen Miller, was pinned by Darrell Blyling; 133 pounds—Brooks Granger was decided by Dan Deckard; 130 pounds—Les Olson was decided by Dan Wilcox; 146 pounds—Walt Taylor pinned Ron Fife; 141 pounds—Steve Taylor pinned Dave Robertson; 146 pounds—John Allen was pinned by Fred Gray; 157 pounds—Bob Rude decided Dan Peak.

man was pinned by Dave Blyling; 115 pounds—Glen Miller, was pinned by Darrell Blyling; 133 pounds—Brooks Granger was decided by Dan Deckard; 130 pounds—Les Olson was decided by Dan Wilcox; 146 pounds—Walt Taylor pinned Ron Fife; 141 pounds—Steve Taylor pinned Dave Robertson; 146 pounds—John Allen was pinned by Fred Gray; 157 pounds—Bob Rude decided Dan Peak.

Garrett Opines Six Figure Bonus Would Be Okay

NEW YORK (AP)—Heisman Trophy winner Mike Garrett Thursday said it might be a quarter million dollars on the line for college football's strongest running legs for the pros. "If Verby (Bill Verby, Michigan), a tackle can get \$250,000 for signing with the New York Jets, I don't see why I shouldn't think in like a six figure," said the All-American half-back from Southern California.

Sergeant Is Accused of Taking Bribe

NEW YORK (AP)—An Army recruit sergeant was arrested Thursday and accused of soliciting a bribe from a New York Jets football player to help him land a contract.

The player, Bob Schweickert, 22, was said to have reported the sergeant to the FBI. He is a former Virginia Tech quarterback.

"Sergeant Verby, owner of the American Football League club, told WABC radio that Schweickert reported for a pre-induction procedure about two weeks ago. He was told by the sergeant that the matter could be properly taken care of."

John F. Malone, assistant director of the New York FBI identified the recruiter as Staff Sgt. Wilfred Lewis, 38, of the Bronx. He was arrested outside his Jackson Heights residence last week when the money had been passed, Malone said.

The FBI statement said: "Allegedly Lewis, when contacted by a drafting office of the New York Jets football team, solicited a sum of money and in return, Lewis would see that this individual was put at the top of the list of eligibles to enter the National Football League to satisfy military obligation."

By so doing, the football player would be selected in a National Guard unit ahead of others.

This information was furnished to the FBI through the cooperation of the New York Jets management after they had been contacted by one of their players who had immediately reported this information.

Bowling

HOWLAND, Wis.—Lester Valiz Leason, No. 2 Pick of the American Bowling Congress, defeated Lester Hunt, No. 1 Pick of the American Bowling Congress, in a 3-2 final of the 1965-66 National Bowling Congress Open. Valiz Leason, 21, defeated Hunt, 21, in a 3-2 final of the 1965-66 National Bowling Congress Open. Valiz Leason, 21, defeated Hunt, 21, in a 3-2 final of the 1965-66 National Bowling Congress Open.

Burrini Wins on KO in 13th Round

SYDNEY, Australia (AP)—Silvatore Burrini of Italy knocked out Australia's Rocket Gattellari in 2:25 of the second round Thursday night in a fight billed for the world flyweight boxing championship.

Burrini, striped of his title by the World Boxing Council and World Boxing Association for failure to defend against Italy's Giovanni Ebbihara, floored Gattellari three times in the 13th.

WILLS MOTOR CO.

"THE BEST PLACE TO BUY A CAR"

Announces the 1966 Plymouth Fury...



a great big beauty in a great big hurry

The beauty of Fury! Means owning a big, bold, low-price car with economy in operation, smooth, quiet, comfortable, durable. Built-in corrosion-resistant body panels and an alternator electrical system. Standard equipment. 16-horsepower V-8 power options all the way to the 440-cubic-inch Commando engine. It means a host of comfort and convenience features... and a wide choice of interiors. It means... well, it means you should come see the 1966 Fury now. It's a beautiful sight.

Let yourself go... Plymouth

YOUR RAMBLER, PLYMOUTH, JEEP, TOYOTA DEALER 236 SHOSHONE ST. WEST PHONE 733-2891

SPORTS

Filer Edges Wood River In Wrestling

FILER—Thanks to three forfeits in the top weights, the Filer Wildcats opened the wrestling season Thursday night with a light 28-26 victory over the Wood River Wolverines.

man was pinned by Dave Blyling; 115 pounds—Glen Miller, was pinned by Darrell Blyling; 133 pounds—Brooks Granger was decided by Dan Deckard; 130 pounds—Les Olson was decided by Dan Wilcox; 146 pounds—Walt Taylor pinned Ron Fife; 141 pounds—Steve Taylor pinned Dave Robertson; 146 pounds—John Allen was pinned by Fred Gray; 157 pounds—Bob Rude decided Dan Peak.

CHRISTMAS... THIS!

GIVE YOUR FAMILY A NEW KIND OF WINTER FUN!

SKEETER

backed by Evrolino

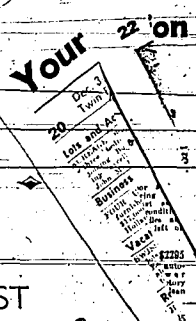
Cross the dotted countrywide, low prices and big savings. Take a family "snow saucer" on scenic trails. Put a little fun in your winter with a new Snow Saucer. Now, here new models. Stop in with the family and make a date to go on. No obligation.

January, February, March, April, May, June, July, August, September, October, November... December

BUD & MARK'S

347 Main Ave. E. Phone 733-1194

THE TRUE-OLD-STYLE KENTUCKY BOURBON



GIFT IDEAS

SANTA'S GIFT IDEAS AND CHUCKLE CONTEST

ENTER NOW!

\$30 Cash Weekly - Free Theater Tickets Daily

Every day 'til Christmas 2 guest tickets to the Motor-Vu and 2 tickets to the Orpheum or Idaho will be awarded as prizes in the Chuckle Contest together with \$30 CASH weekly prizes—\$15, 1st prize, \$10, 2nd prize, \$5, 3rd prize.

All you need to do to enter this big 2 COMPLETE LINES from the Gift Idea Section and the balance of the complete lines (to be) from any other part of the Classified Section in the paper to make up a funny category. Paste up the lines in the most humorous combination possible and mail or bring to Santa's Editor, Classified Department, Times-News, will be entered in the contest daily. Tickets and money will be mailed to winners.

Real estate listings for homes for sale, including 'Homes for Sale' and 'Twin Falls News-News'.

Real estate listings for homes for sale, including 'Homes for Sale' and 'Twin Falls News-News'.

Real estate listings for homes for sale, including 'Homes for Sale' and 'Twin Falls News-News'.

Real estate listings for homes for sale, including 'Homes for Sale' and 'Twin Falls News-News'.

Real estate listings for homes for sale, including 'Homes for Sale' and 'Twin Falls News-News'.

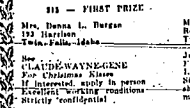
Real estate listings for homes for sale, including 'Homes for Sale' and 'Twin Falls News-News'.

Real estate listings for homes for sale, including 'Homes for Sale' and 'Twin Falls News-News'.

Real estate listings for homes for sale, including 'Homes for Sale' and 'Twin Falls News-News'.

Real estate listings for homes for sale, including 'Homes for Sale' and 'Twin Falls News-News'.

Real estate listings for homes for sale, including 'Homes for Sale' and 'Twin Falls News-News'.



Gifts For Men: The Ideal Gift, Knit Ties & Books, Abbott's Auto Supply.

Gifts For Women: Knit Ties & Books, Carroll's, Ladies' Footwear.

Gifts For Children: Kregel's Toyland, Toys, Games, Puzzles.

Gifts For Family: See Our New Component Stereo Room, Citizens Band Radio.

Gifts For Home: Open House Event, Give-A-Lasting-Gift, Typewriter.

Gifts For Men: Ladies' Footwear, Macies, Ladies' Footwear.

Gifts For Women: Why Not a Lovely Billfold Purse, Ladies' Footwear.

Gifts For Children: Stocking Stuffers, Toys, Games, Puzzles.

Gifts For Family: RCA Victor Stereo, United Electronics.

Gifts For Home: Make This a Portable TV Christmas, Typewriter.

Gifts For Men: Pipes or Cigars, Don's Sport Shop.

Gifts For Women: Why Not a Lovely Billfold Purse, Ladies' Footwear.

Gifts For Children: Five Piece Teflon Cookware, D & B Supply Co.

Gifts For Family: House Slippers, Vacuum Cleaners.

Gifts For Home: Make This a Portable TV Christmas, Typewriter.

Gifts For Men: Christmas Special Brand-New, Don's Sport Shop.

Gifts For Women: Why Not a Lovely Billfold Purse, Ladies' Footwear.

Gifts For Children: Five Piece Teflon Cookware, D & B Supply Co.

Gifts For Family: House Slippers, Vacuum Cleaners.

Gifts For Home: Make This a Portable TV Christmas, Typewriter.

Gifts For Men: Christmas Special Brand-New, Don's Sport Shop.

Gifts For Women: Why Not a Lovely Billfold Purse, Ladies' Footwear.

Gifts For Children: Five Piece Teflon Cookware, D & B Supply Co.

Gifts For Family: House Slippers, Vacuum Cleaners.

Gifts For Home: Make This a Portable TV Christmas, Typewriter.

Gifts For Men: Christmas Special Brand-New, Don's Sport Shop.

Gifts For Women: Why Not a Lovely Billfold Purse, Ladies' Footwear.

Gifts For Children: Five Piece Teflon Cookware, D & B Supply Co.

Gifts For Family: House Slippers, Vacuum Cleaners.

Gifts For Home: Make This a Portable TV Christmas, Typewriter.

Gifts For Men: Christmas Special Brand-New, Don's Sport Shop.

Gifts For Women: Why Not a Lovely Billfold Purse, Ladies' Footwear.

Gifts For Children: Five Piece Teflon Cookware, D & B Supply Co.

Gifts For Family: House Slippers, Vacuum Cleaners.

Gifts For Home: Make This a Portable TV Christmas, Typewriter.

Gifts For Men: Christmas Special Brand-New, Don's Sport Shop.

Gifts For Women: Why Not a Lovely Billfold Purse, Ladies' Footwear.

Gifts For Children: Five Piece Teflon Cookware, D & B Supply Co.

Gifts For Family: House Slippers, Vacuum Cleaners.

Gifts For Home: Make This a Portable TV Christmas, Typewriter.

\$500 IN CASH PRIZES SUNDAY!

Win prizes in various amounts throughout the day Sunday. Register free at either place: HORSE SHU CLUB or CACTUS PETE'S. Limit one prize per person Sunday afternoon and evening.

"The Fun Spots South of the Border"



Now! On Stage at the Horse Shu!

"The SAINTS"



"Suzi Arden"

Now... in person

CACTUS PETE'S

Free TURKEYS
SUNDAY AFTERNOON
at Cactus Pete's

STEAK DINNERS

Sunday, Dec. 5th from
3:00 to 10:00 p.m.
at the Horse Shu

25^c

Gala Room Buffets

EVERY FRIDAY and
SATURDAY

... in the Gala Room

GIFTS GALORE
Novelties, Unusual and
Distinctive Gift Items
for everyone!

**CACTUS PETE'S
GIFT SHOP**