

Weather Partial Clearing, Little Cooler

VOL. 63, NO. 299

Times News

Final Edition

The Magic Valley Newspaper Dedicated to Serving and Promoting the Growth of Nine Irrigated Idaho Counties

TWIN FALLS, IDAHO, FRIDAY, FEBRUARY 10, 1967

TEN CENTS

Rusk Says Reds Planning Great Attack, Not Peace

WASHINGTON (AP) — Secretary of State Dean Rusk's opinion, the Communists are gearing up for more hard fighting in Vietnam rather than an extension of the current cease-fire for a move to a conference table.

Tuition Raise Will Stick, Says Reagan

SACRAMENTO, Calif. (AP) — University of California students marchers return to class today with a sign that their state Capitol protest changed Republican Gov. Ronald Reagan's mind on tuition and economic aid.

Oil Industry Price Raise Still Spreads

NEW YORK (AP) — More major oil companies have joined in a spreading gasoline price increase.

Buildup Of Supplies Mars War Truce

SAIGON, South Vietnam (AP) — A massive buildup of supplies in North Vietnam during the first three days of the lunar new year truce has obviously frustrated American bombing raids.

Labor Leader Will Reply To UAW Attack

WASHINGTON (AP) — President George Meany of the AFL-CIO is drafting a massive "white paper" of his own to hit back at United Automobile Workers' Chief Walter Reuther's 7,000-word attack on the giant labor federation.

Indonesia Tries To Oust Sukarno

JAKARTA, Indonesia (AP) — Indonesia's Parliament was reported today to have called on Congress to oust President Sukarno and investigate his connections with the Communists.

Missile Destroyed After Mishap

WHITE SANDS MISSILE RANGE, N.M. (AP) — An Air Force Athena missile was destroyed in flight Thursday night after an apparent malfunction during its second flight.



DICK HAYNES, left, Fred Becker at wheel, and Chief of Police Frank Barnett inspect new traffic vehicle being added to the Twin Falls Police Department.

Flashing Blue Lights — Something New For T.F. Police Department

By BONNIE BAIRD JONES Times-News Staff Writer — Sirens and flashing blue lights. Flashing blue lights? That is the new trend in traffic emergency vehicles.

Calvin Wright Talks To Burley Banquet

BURLEY — "Almost everyone is honest about income tax returns, which is a tribute to the loyalty and patriotism of the American people," Calvin E. Wright, Boise, state director of internal revenue, declared Tuesday night at the Burley Chamber of Commerce Annual Banquet.

Valley Skiing Conditions Said Good

Good to excellent skiing is reported for the weekend by Magic Valley ski resorts, although some regions report high winds.

Airport Loses Anemometer, 'Wet Finger' Method Used

Personnel at the Twin Falls Airport concluded that neighbors are a good thing to have after the anemometer blew off the airport roof Friday morning.

Traffic Deaths

Table showing traffic deaths in Idaho and Magic Valley for 1967 and 1966. Idaho: 1967 (18), 1966 (19). Magic Valley: 1967 (1), 1966 (2).

Senate Kills Bill To Keep Gem State On Standard Time

BOISE (AP) — An alternative for increasing teachers retirement benefits which would place contributions in local banks and savings and loan associations was presented to the House Education Committee today.

75 Killed, 300 Hurt By Colombia Quake

BOGOTA, Colombia (AP) — The toll from Colombia's most disastrous earthquake rose to 75 dead today with more than 300 injured, the Interior Ministry reported.

First Atomic Spy Case In China Noted

TOKYO (AP) — The first atomic spy case in Red China — the newest and probably least advanced member of the five-nation nuclear club — was reported today.

New Storm Hits Ravaged East Coast

By The Associated Press — A new snowstorm struck the already blizzard-ravaged Eastern Seaboard today with up to 14 inches of additional snow.

Long Illness Takes Life Of Pharmacist

Charles C. Kingsbury, 77, 1101 N. Adams, died Friday morning at Magic Valley Memorial Hospital of a long illness.

Veterinary Group Slates Burley Meet

BURLEY — Annual meeting of the Idaho Veterinary Association will be held in Burley Saturday and Sunday.

Cuban Exiles Are Planning New Regime

WASHINGTON (AP) — Cuban exiles are talking one another about the possibility of establishing a Cuban government in exile but the official word here is that the United States would not recognize it.

Filer Slates Bull Sale On Saturday

FILER — Grading of Aberdeen Angus here was held Friday at the Twin Falls County Fairgrounds prior to the Saturday sale which begins at noon.

Abolition Council

CONVID, N.J. (AP) — The State Senate has postponed indefinitely action on this question: Should a bill to abolish the Legislative Council for study?

YOUR BIRTHDAY and HOROSCOPE



FRIDAY, Feb. 10 — Born today you are idealistic but life has taught you that though you need not let go of your ideals, you cannot expect to find them very often fulfilled in the world. You could easily become known as an outstanding humanitarian, for nothing seems to you more worthwhile than helping others, either singly or in large groups. Social work is your natural niche — and should you be fortunate enough to have money you could well become a philanthropist.

You have nothing against working hard and are even able to force yourself to step into a job for which you have no liking, merely because no one else can be found to do it. Such an attitude on your part may cause others to take advantage of you at times, however.

House and home promise to be very important to you both personally and professionally. The family circle is the one place where you feel free to express your likes and dislikes openly, and where you can let your hair down without fear of losing the respect of others.

To find what is in store for you tomorrow, select your birthday and read the corresponding paragraph. Let your birthday star be your daily guide.

SUNDAY, February 12 — Acquaintances (Jan. 21-Feb. 19) — Take time to make people satisfied with their lot on the home front. Your efforts should bring happiness to loved ones.

MONDAY, Feb. 20 (March 21) — Your personal popularity can serve you well today by making you a valuable friend or two. Get out and make contacts.

TUESDAY, March 22 (April 20) — Plan a trip to visit family or friends — but don't neglect morning devotions in your haste to depart early. A good day.

WEDNESDAY, April 21 (May 21) — Should you be troubled by matters that seem too knotty, seek the aid of a spiritual leader.

THURSDAY, May 22 (June 21) — An excellent day for making a journey that has some connection with business or profession. Include the family.

FRIDAY, June 22 (July 23) — A day which should bring a large measure of contentment to you and your loved ones. Don't neglect the littlest family members.

SATURDAY, July 24 (Aug. 23) — Be cooperative should you be called upon to aid in a community undertaking. You can't make a name for yourself locally.

SUNDAY, Aug. 24 (Sept. 23) — A family get-together may be just what's needed to combat the frayed feathers of older family members. Try it.

MONDAY, Sept. 24 (Oct. 23) — A day for church services, centering today to the fulfillment of your personal desires. Include periods of rest.

TUESDAY, Oct. 24 (Nov. 22) — An active Sunday. SCORPIO (Oct. 24-Nov. 22) — You can get the jump on competitors by planning ahead now for the next few weeks' work.

WEDNESDAY, Nov. 23 (Dec. 22) — A fortunate day for the Sagittarius who has planned a family outing that includes a change of scene.

THURSDAY, Dec. 23 (Jan. 20) — Provide food for your spirit and you'll not worry so much about other things. Seek activities fitting your rare mood.

FRIDAY, Jan. 21 (Feb. 19) — Plan a social gathering for the evening, but use the daylight hours to carry out usual Saturday routine. A bright day and night.

SATURDAY, Feb. 19 (March 21) — Plan a social gathering for the evening, but use the daylight hours to carry out usual Saturday routine. A bright day and night.

SUNDAY, March 21 (April 20) — Plan a social gathering for the evening, but use the daylight hours to carry out usual Saturday routine. A bright day and night.

Although you have the sort of personality that leads others to think that they can get around you easily, you surprise many with the firmness of your character when it comes to getting something you really want.

You desire success to a very high degree — but you would feel it in a minute if it were standing in the way of your family's happiness. You have no wish to make a big name for yourself in the outside world and have at the same time no really close relations in your own inner-circle. Children especially mean much to you.

To find what is in store for you tomorrow, select your birthday and read the corresponding paragraph. Let your birthday star be your daily guide.

SUNDAY, February 12 — Acquaintances (Jan. 21-Feb. 19) — Take time to make people satisfied with their lot on the home front. Your efforts should bring happiness to loved ones.

MONDAY, Feb. 20 (March 21) — Your personal popularity can serve you well today by making you a valuable friend or two. Get out and make contacts.

TUESDAY, March 22 (April 20) — Plan a trip to visit family or friends — but don't neglect morning devotions in your haste to depart early. A good day.

WEDNESDAY, April 21 (May 21) — Should you be troubled by matters that seem too knotty, seek the aid of a spiritual leader.

THURSDAY, May 22 (June 21) — An excellent day for making a journey that has some connection with business or profession. Include the family.

FRIDAY, June 22 (July 23) — A day which should bring a large measure of contentment to you and your loved ones. Don't neglect the littlest family members.

SATURDAY, July 24 (Aug. 23) — Be cooperative should you be called upon to aid in a community undertaking. You can't make a name for yourself locally.

SUNDAY, Aug. 24 (Sept. 23) — A family get-together may be just what's needed to combat the frayed feathers of older family members. Try it.

MONDAY, Sept. 24 (Oct. 23) — A day for church services, centering today to the fulfillment of your personal desires. Include periods of rest.

TUESDAY, Oct. 24 (Nov. 22) — An active Sunday. SCORPIO (Oct. 24-Nov. 22) — You can get the jump on competitors by planning ahead now for the next few weeks' work.

WEDNESDAY, Nov. 23 (Dec. 22) — A fortunate day for the Sagittarius who has planned a family outing that includes a change of scene.

THURSDAY, Dec. 23 (Jan. 20) — Provide food for your spirit and you'll not worry so much about other things. Seek activities fitting your rare mood.

FRIDAY, Jan. 21 (Feb. 19) — Plan a social gathering for the evening, but use the daylight hours to carry out usual Saturday routine. A bright day and night.

SATURDAY, Feb. 19 (March 21) — Plan a social gathering for the evening, but use the daylight hours to carry out usual Saturday routine. A bright day and night.

SUNDAY, March 21 (April 20) — Plan a social gathering for the evening, but use the daylight hours to carry out usual Saturday routine. A bright day and night.

MONDAY, April 20 (May 21) — Plan a social gathering for the evening, but use the daylight hours to carry out usual Saturday routine. A bright day and night.

No Cuffs!

LONDON (AP) — "Look, no cuffs," said Soviet Premier Alexei Kosygin in Russian, nodding toward the bottom of his trousers.

"You're with it, all right," said Prince Philip with a laugh as Kosygin's English-speaking daughter, Ludmilla Gvishina interpreted.

The sartorial exchange took place in the marble-columned music room of Buckingham Palace before an informal dinner Philip's wife, Queen Elizabeth II, gave Thursday night for the visiting Soviet premier.

Stockholders Of Land Bank Hold Meeting

—Stockholders of the Federal Land Bank Association of Twin Falls will hold their annual meeting Monday.

Elmer Dossel, FLBA president, said registration will begin at 11:30 a.m. at the Holiday Inn, followed by a noon dinner and business session.

—Stockholders will elect two new directors and hear reports on the financial progress of the long-term agricultural lending institution.

Four candidates for two directorships have been named. They are William M. Whittington, Edna; Clarence Hoffield, Hansen, Incumbents, and Harold T. Edson, and William McCoy, Murtaugh. Nominations will be accepted from the floor.

Budget For Shoshone Is Same As '66

SHOSHONE — City Budget for the coming year was adopted at \$92,649 at the public hearing held Tuesday night by the City Council. No one appeared to protest the budget, and it remains about the same as last year's.

Within the anticipated expense fund \$79,750 was in general fund; \$2,803 in the library fund; \$2,776 in the fire department fund; \$9,074 in the recreation fund; \$2,219 in the street lighting fund.

Anticipated receipts will be \$27,639 from the mill levy, \$45,250 from other revenue such as water, sewer, beer and liquor licenses, permits and such, and a balance of \$19,760 holdover.

The anticipated revenue from taxes show the 23.3 mill levy will bring in the \$17,358, with 3.8 mills to bring in \$2,830 for the library fund; 1.4 mills to bring in \$1,943 for the fire department fund; the 1.9 mills to bring in \$1,416 for the recreation fund and 6.7 mills to bring in \$4,902 for the street lighting fund.

SCORPIO (Oct. 24-Nov. 22) — An active Sunday. SCORPIO (Oct. 24-Nov. 22) — You can get the jump on competitors by planning ahead now for the next few weeks' work.

Civil Service Jobs Are Open

New Civil Service opportunities were announced this week by Civil Service Examiner R. O. Finney, Twin Falls.

The new openings include fire control aide, \$4,776 a year; aerial observer, \$5,331; fire dispatcher, \$5,331 to \$6,451; fire control officer, \$6,451; apprentice \$2.29 an hour; card punch operator, \$3,925 to \$4,209 a year and junior federal assistant, \$32.00 a week to start.

The closing date for applications for the junior federal assistant is Feb. 20.

Driving Privileges Of 94 Valley Residents Revoked

The drivers' licenses of 94 Magic Valley residents were suspended by the Department of Law Enforcement during January.

Those residents of Twin Falls county that had their licenses revoked for driving while under the influence of alcohol were Fred A. Allen, Kimberly; James G. Ater, Murtaugh; James A. Brennan, Clifford W. Byler, Floyd M. Germany, John R. Deweller, Creed Hamilton, Claudia B. Johns, Vladimir Mischezhko, Henry L. Oliver, Dicky R. Roth, Alfred J. Stecklein, Robert J. Stevens, Gerald G. Steward, Robert L. Warren, Otis Young and Richard D. Roy, all Twin Falls.

Those having their licenses revoked for reckless driving were Victor T. Stockton and Jim W. Thornton, both Twin Falls. Those having their licenses suspended for safety responsibility were Henry Arcland, Joe E. Arellano, Richard J. Cramer, Stanley Anderson, Richard Eugene Armstrong, Joan Holmes, Wilfred A. Corbin Jr., Carol Ann Cutts, Bonnie R. King, Shirley McBride and Barbara J. Slatter, all Twin Falls; Taylor Brown and Milo A. Lujan, both Kimberly; Richard W. Allen, Barbara Ann Webster, Norma J. Slatter and Rodney R. Sturgill, all Piler; Jay C. Looney, Murtaugh, and Jesus Ramos, Buhl.

Lincoln County — Rose M. Urrutia had her license suspended for reckless driving.

Minidoka County — Driving while under the influence of intoxicating liquor were John R. Blevins; Minidoka; Rudy Schaeffer, Paul, and Sam Walters, Rupert.

Reckless driving were William E. Haynes, Paul; Mark A. Morrison-Rupert; Sidney K. Olsen, Heyburn, and Richard O. Park, Rupert.

Safety responsibility were Tommy Peterson, Paul; Gerald W. Burton, Gladys E. Goode, Joe W. King, Ramon Vella, Henry Gallegos and Eunice K. Jones, all Rupert.

Jerome County — Driving under the influence of intoxicating liquor was Phyllis Preckel, Jerome.

Driver improvement, Curtis G. Haine, Jerome.

Safety responsibility were Melvin C. Hilbert, Frank H. Smith and Theodore J. Pullin, all Hazelton.

Gooding County — Reckless driving, Vern J. Barnum, Gooding.

Driver improvement, Samuel J. Yost, Gooding.

Elmore County — Driving while under the influence of intoxicating liquor were Lewis Allen, Lee Nichols and Earl W. Smith, all Glens Ferry; Richard T. Berryman, Lynn H. Davis, Richard A. Fisher and Duane McAllister, all Mountain Home.

Reckless driving, James R. Grobner, David Howington, Fredrick Jackson, Lois Wilde Moneyenny and Everett W. Sell, Mountain Home.

Driving while license suspended was Everett W. Sell, Mountain Home.

Refusal to submit to a chemical test was Llewellyn Harold McConky, Mountain Home.

Safety responsibility were Rosa Estolito Dela and Tom Clyde, both Glens Ferry.

Cassia County — Driving while under the influence of intoxicating liquor were Carl R. Bond, Clay G. VanWinkle, Willie Wilson and Phillip J. Yazzie, all Burley.

Reckless driving, Ronald Moline, Burley.

Driver improvement, Dennis G. Butcher and Howard W. Caser, both Burley.

Safety responsibility — Robert E. Mort, Faye Gibby, Frank S. Hodgson, David O. Valverde, Evangelina Cortez and Carol Janice Palmer, all Burley, and Thern Henry Ward, Malia.

Blamires Are Honored At Richfield

RICHFIELD — Mr. and Mrs. Floyd Blamires were honored by the Richfield Lions Club at the annual ladies night banquet Tuesday evening at the Methodist-recreation rooms.

The Blamires recently moved to Gooding where he was transferred by the Bank of Idaho.

Peter Schmidt, acting president, served as master of ceremonies. Blamires, retiring president was presented a pen set from the Lions with Melvin Pope making the presentation. Phyllis Flavel played piano selections.

New Lions club officers elected are Melvin Pope, president; Carl Paulson, vice-president and treasurer; Charles Buttane, secretary; Lyle Piper, Lion tamer, and Albert Pyle, lion taster. Directors will be named later.

Other guests were Mr. and Mrs. James Carpenter, Gooding, and Mr. and Mrs. Jerry Mitchell, Richfield Bank of Idaho manager and his wife.

BREAKS SHOULDER — MALTA — Delbert Hutchison, son of Mr. and Mrs. Nish Hutchison, is recovering from a broken shoulder received while playing in the Malta-Burley seventh grade basketball game.

This is not an offer of these Securities for sale. The offer is made only by prospectus.

\$1,250,000.00
3 Year Subordinated Debentures

6%

INTEREST PAID SEMI-ANNUALLY

COPY OF PROSPECTUS MAY BE OBTAINED FROM

Reliance Credit Corporation
137 Second St. West, Twin Falls, Idaho
Phone 733-7202

An Idaho Corporation

Television Schedules

Friday, February 10

BEST BET IN MOVIES
 7 p.m., 2B, 3 and 11: 8—"Good Neighbor Sam." (1964) Janet Lagery's inheritance will bring her 15 million dollars if she stays married to her husband—from whom she has just separated.
 10:15 p.m., 4—Nightmare Theater, 1. "The Vampire's Coffin." (Mexico, 1967). 2. "The Monster Demolisher." (Mexico, 1962).
 10:45 p.m., 11—"I'll Get By." (1950) An ex-song plugger and a Texas song-writer go into the business of publishing music.

Key to Stations

2SL KUTV-TV Salt Lake
 2B KBOI-TV Boise
 3 KID-TV Idaho Falls
 4 KCPX-TV Salt Lake
 7 KSL-TV Salt Lake
 7B KTVB-TV Boise
 8 KMTV-TV Idaho Falls
 11 KFIV-TV Twin Falls
 (c) Telecast in color

5:30 2B—News, Spits., Withr.
 2SL—News c
 3—Wild Wild West
 4—Cheyenne
 5—News, Spits., Withr.
 7B—News, Spits., Withr.
 11—Wild Wild West
 6:00 2B—Coliseum
 2SL—News, Spits., Withr.
 5—Riflemen
 7B—Green Hornet c
 6:30 2SL—Tarzan c
 3—Hogan's Heroes c
 7B—Green Hornet c
 5—Hogan's Heroes c
 7B—Danny Thomas c
 8—Tarzan c

Bremen Port Enters Jet Age Industry

The north German port of Bremen is well-known as a maritime center of international significance.

The diversification of industry in Bremen is less widely appreciated, however, although it includes shipyards, steel mills, breweries, and most recently a burgeoning aeronautics industry. Technical and training facilities have also centered in the city. The Bremen navigation school has been celebrated for generations and one of the finest facilities; a flight school, is dedicated to navigation in the jet age.

During the post-war era the airline industry has been cut in fronted by a continuing need for skilled flight crews. Many companies have depended on competitive bidding or military-trained personnel to meet their requirements.

Luthansa, the major German carrier, sought a more permanent solution to the problem during its reorganization in the late 1950's. Today after a relatively brief time-span, the Bremen flight school is among the finest in the world and boasts a 93 per cent success rate among its students. To date 178 fully-trained pilots have been graduated and in addition 180 former commercial and air force pilots trained.

Keynote of the school's success has been thoroughness throughout the exhaustive 27-month curriculum. Candidates were initially screened from a total of 28,000 applicants, and small classes of only 15 maintained.

The first three months in the Bremen school are devoted to practical work in the company's shops; the second three-month period to classroom study including flight safety, meteorology, radio communication in English, and aviation law.

Actual flight training begins in the sixth month in connection with continued ground instruction. The training is individual and includes supplementary work in the Link trainer. Sixty hours air-time qualify the student for a private pilot's license.

An additional 100 hours in the do Havilland Chipmunk and 60 hours in the Sand Saffin—a single-engine model with nose wheel, retractable landing gear, and adjustable propeller—are required for a professional license.

After 20 supplementary hours in the Beechcraft Twin Bonanza equipped with advanced instrumentation, candidates obtain commercial licenses and qualify to be second pilots on Comair 340's or third pilots on Comair 340's.

Total flight training at the Bremen flight school is 250 hours plus 100 hours in the Link. There are 1700 hours of ground training which includes 600 hours of navigation, 600 hours of engineering, 200 hours air traf-

EXPERT WATCH REPAIR AT LOW COST!
 BARTON'S Jewels
 • LYNWOOD

Saturday, February 11

BEST BET IN MOVIES
 3 p.m., 4, 7B and 11—ABC Wide World of Sports 1. The Casius Clay-Eric Terrell championship fight taped in Houston Feb. 6. 2. Highlights of the International Ski Jumping Championships at Garmisch, West Germany.
 7 p.m., 2SL, 2B and 8—"Dark City." (1950) Charles Heston plays the role of a gambler who becomes a target for a psychotic killer.
 10:15 p.m., 7B—"The Violent Men." (1954) The wife of a crippled cattle rancher encourages him to drive the small ranchers out of his valley, while she carries on a romance with his younger brother.

SATURDAY MORNING

6:30 4—Farm Report
 5—Big Picture
 7:00 2SL—Super Six c
 2B—Captain Kangaroo
 3—Mighty Heroes c
 5—Captain Kangaroo
 7B—Super Six c
 8—Super Six c
 11—Super Six c
 7:30 2SL—Atom Ant c
 3—Unmergod c
 10:00 2SL—Atom Ant c
 4—Rory Pig c
 7B—Atom Ant c
 8—Atom Ant c
 11—Atom Ant c
 8:00 2SL—Flintstones c
 2B—Frankenstein Jr. c
 3—Frankenstein c
 4—King Kong c
 5—Frankenstein c
 7B—Flintstones c
 11—Flintstones c
 8:30 2SL—Space Kidettes c
 2B—Space Kidettes c
 3—Space Kidettes c
 4—Beatles c
 5—Space Kidettes c
 7B—Space Kidettes c
 8—Space Kidettes c
 11—Space Kidettes c
 9:00 2SL—Secret Squirrel c
 2B—Superman c
 3—Superman c
 4—Casper c
 5—Superman c
 7B—Secret Squirrel c
 11—Secret Squirrel c
 8:30 2SL—Jettsons
 2B—Lone Ranger c
 3—Lone Ranger c
 4—Mighty Monster
 5—The Lone Ranger c
 7B—Jettsons c
 11—Jettsons c
 10:00 2B—Road Runner c
 2SL—Cool McCool c
 4—Bugs Bunny c
 3—Road Runner c
 5—Road Runner c
 7B—Cool McCool c
 8—Cool McCool c
 11—Cool McCool c
 10:30 2B—Beagles c
 2SL—Smithsonian
 3—Beagles c
 4—Beagles c
 5—Magilla Gorilla c
 6—Smithsonian c
 8—Smithsonian c
 11—Smithsonian c
 11:00 2B—Tom & Jerry c
 2SL—Animal Secrets
 3—Tom & Jerry c
 5—Tom & Jerry c
 4—Hoppy Hooper c
 7B—Animal Secrets c
 8—Animal Secrets c
 11—Animal Secrets c

11:30 2B—Mighty Heroes c
 2SL—Movie "Tarzan and the She-Devil"
 5—Mighty Heroes c
 3—American Bandstand
 4—American Bandstand
 11—American Bandstand
 7B—American Bandstand
 8—College Basketball
 12:00 2B—Underdog
 5—Underdog
 12:30 2B—Magilla Gorilla
 7—Doany and Cecil
 2SL—Inquiring Editor
 3—Hoppy Hooper
 11—CBS Golf Classic
 4—Teenagers Sound Off
 5—Zane Grey
 1:00 2B—Movie "The Boy From Oklahoma"
 4—It's the Law in Utah
 5—TBA
 7B—Littlet Hebo
 3—Film Feature
 2SL—High School Basketball
 3—Pro Bowler's Tour
 4—Pro Bowler's Tour
 7B—Pro Bowler's Tour
 11—Pro Bowler's Tour
 8—Greatest Show
 2:00 5—CBS Golf Classic
 2:30 2B—Inspiration for Life
 8—Movie, "Three Brave Men"
 3:00 2B—CBS Golf Classic
 2SL—Shell's World of Golf c
 3—World of Sports c
 4—World of Sports c
 7—World of Sports c
 11—World of Sports c
 5—Detectives
 3:30 5—Zane Grey
 4:00 2B—Phoenix Open
 2SL—Phoenix Open
 8—Phoenix Open
 5—Twilight Zone
 4:30 5—King Kong
 4—Outer Limits
 5—News c

5—Unmergod c
 7—Doany and Cecil
 2SL—Inquiring Editor
 3—Hoppy Hooper
 11—CBS Golf Classic
 4—Teenagers Sound Off
 5—Zane Grey
 1:00 2B—Movie "The Boy From Oklahoma"
 4—It's the Law in Utah
 5—TBA
 7B—Littlet Hebo
 3—Film Feature
 2SL—High School Basketball
 3—Pro Bowler's Tour
 4—Pro Bowler's Tour
 7B—Pro Bowler's Tour
 11—Pro Bowler's Tour
 8—Greatest Show
 2:00 5—CBS Golf Classic
 2:30 2B—Inspiration for Life
 8—Movie, "Three Brave Men"
 3:00 2B—CBS Golf Classic
 2SL—Shell's World of Golf c
 3—World of Sports c
 4—World of Sports c
 7—World of Sports c
 11—World of Sports c
 5—Detectives
 3:30 5—Zane Grey
 4:00 2B—Phoenix Open
 2SL—Phoenix Open
 8—Phoenix Open
 5—Twilight Zone
 4:30 5—King Kong
 4—Outer Limits
 5—News c

5—Unmergod c
 7—Doany and Cecil
 2SL—Inquiring Editor
 3—Hoppy Hooper
 11—CBS Golf Classic
 4—Teenagers Sound Off
 5—Zane Grey
 1:00 2B—Movie "The Boy From Oklahoma"
 4—It's the Law in Utah
 5—TBA
 7B—Littlet Hebo
 3—Film Feature
 2SL—High School Basketball
 3—Pro Bowler's Tour
 4—Pro Bowler's Tour
 7B—Pro Bowler's Tour
 11—Pro Bowler's Tour
 8—Greatest Show
 2:00 5—CBS Golf Classic
 2:30 2B—Inspiration for Life
 8—Movie, "Three Brave Men"
 3:00 2B—CBS Golf Classic
 2SL—Shell's World of Golf c
 3—World of Sports c
 4—World of Sports c
 7—World of Sports c
 11—World of Sports c
 5—Detectives
 3:30 5—Zane Grey
 4:00 2B—Phoenix Open
 2SL—Phoenix Open
 8—Phoenix Open
 5—Twilight Zone
 4:30 5—King Kong
 4—Outer Limits
 5—News c

WE MAKE

LOANS
 On Anything of Value
RED'S
 Trading Post

ANNOUNCING

the affiliation of HOWARD C. TIPPIN,
 as consultant of
MAICO HEARING AID CENTER

Howard, a well-known, long time resident of Twin Falls, comes to us after extensive factory training, course in Salling and servicing MAICO HEARING AIDS.

Find the answer to your hearing problems by having Howard fit you with a Modern Maico Hearing Aid.

"Maico, the most respected name in Hearing"

For FREE Consultation and/or demonstration Phone 733-7330 or STOP BY OUR OFFICE

MAICO HEARING AID CENTER
 155 Main West Twin Falls

CLOSE OUT
 Living room quality
CARPETING
 8 ROLLS ONLY OF
 continuous filament
4.95 SQ. YD.
 DUPONT NYLON
 discontinued patterns
Claude BROWN'S
 143 Main Ave. E., Twin Falls

7—Outdoor Sportsman
 11—Sports and Sportsman
 5:00 2SL—Midwestern Hayride
 2B—News c
 3—News c
 11—News c
 7B—News
 8—Dating Game c

SATURDAY EVENING

5:30 2SL—Flipper c
 7B—Flipper c
 8—Flipper c
 2B—Lost In Space
 5—Lost In Space c
 3—Jackie Gleason c
 4—Dating Game c
 6:00 2SL—Please Don't Eat the Daisies c
 8—Please Don't Eat the Daisies c
 4—Newlywed Game c
 7B—T'roup c
 6:30 2SL—Get Smart c
 7B—Pistols 'n Petticoats
 3—Lawrence Welk c
 4—Lawrence Welk c
 5—Mission Impossible
 7B—Lawrence Welk c
 8—Get Smart c
 11—Lawrence Welk c
 7:00 2SL—Movie, "Dark City"
 2B—Movie, "Dark City"
 8—Movie, "Dark City"
 7:30 4—Hollywood Palace c
 4—Hollywood Palace c
 7B—Hollywood Palace c
 11—Hollywood Palace c
 8:00 5—Gunsmoke c
 8:30 2SL—Pistols and Petticoats c
 4—Movie, "Man on a String"
 7B—Recreational Wife
 11—Pistols 'n Petticoats c
 9:00 3—Gunsmoke c
 5—Jackie Gleason c
 7B—Bob Hope c
 11—Gunsmoke c
 2SL—Andy Williams c
 8—Andy Williams c
 10:00 3—News, Weather, Sports
 2SL—News, Weather and Sports
 11—News, Weather and Sports
 7B—News
 5—News, Weather and Sports
 8—Movie, "The Bad Seed"
 2B—An Evening With Gene Pitney c
 10:15 2B—"The Violent Men"
 10:20 2SL—Movie "The Grass Is Greener"

10:30 3—Averages
 2B—News
 4—News c
 11—Movie, "Intent to Kill"
 10:40 4—News
 5—Movie, "Garden of Evil"
 10:50 2B—Movie, "The Legend of Frc. Diavolo"
 10:55 4—Weather and Sports
 11:00 4—Movie, "The Strangers of Bombay"
 12:15 2SL—Conversation

News of Record

LINCOLN COUNTY Clerk's Office

Warranty Deeds were filed by Mr. and Mrs. Orin Capps to Charles J. Johnson; Mr. and Mrs. Francis N. Stowell to Mr. and Mrs. O. M. Capps.

Articles of incorporation were filed by Burmah Grazing Association.

Great change of pace in taste.

Chet the goat knows that's true. Because Lucky Bock is darker in color and richer in flavor, it's very different from regular beer. Because Lucky Bock is brewed only at this time-of-year, you can buy some right now at your favorite tavern or store. Go ahead and treat your taste to a change of pace that's great.

GENERAL BREWING CORP., SAN FRANCISCO, CALIFORNIA • VANCOUVER, WASHINGTON • SALT LAKE CITY, UTAH

FIDELITY STATE BANK

WE WERE PIONEERS, TOO

Fidelity's start in 1908 at Filer was anything but impressive. But it was a start, and it took a lot of foresight in those days of barren sagebrush to see that this great agricultural heartland could grow from such humble beginnings.

Through 59 years of continuous operation, Fidelity has grown with this area, and is proud to have been of help to so many people. Just because we're bigger now, don't think we've gone high hat.

Ask one of the old timers about us. . . more than likely he'll say "For my money, I'll bank on Fidelity."

Fidelity National Bank
 of Twin Falls

TWIN FALLS
 Shoshone and Main

MOTOR BRANCH
 132 3rd Avenue East

FILER BRANCH
 300 Main, Filer

HAZELTON BRANCH
 Hazelton, Idaho

Dependable Banking Since 1908
 Member Federal Deposit Insurance Corp.

Lenten Guideposts

The Route Of A Winner

By FRANK TARKENTON
Minnesota Vikings Star Quarterback



Whenever some sports fan asks me how you get to be a success, my instinct is to reply, "In football, today's success will be tomorrow's failure."

For it is literally true—that your great triumphs will turn to humiliating defeat the next day.

Actually, I have learned a few things from my five years as a quarterback on the Minnesota Vikings. I think I can point to three guideposts along the way.

First, carry the image of victory in your heart. In our society today we seem to go to extremes. For a while there was an overwhelming emphasis on the importance of winning.

Then a reaction set in. "We're not being realistic," parents say. "Our children will learn how to lose, for aren't defeats a part of life?"

Quite true. Winning can be overstressed. We need to know how to lose gracefully. But kids who think too much about being good losers forget that the purpose of sports, and life, too, is to succeed at what they are doing.

Once a person has succeeded at something he should carry this victory in his heart.

In 1951 the Minnesota Vikings made their debut in the National Football League. Everyone figured we would get clobbered—a new team with a new coach and a new, untried quarterback.

That last defeat was mine. Our first game was with the Chicago Bears and I was never more scared in my entire life.

Early in the game, however, I connected for a touchdown pass—and then another, and another. Before we knew it, we were way out in front and we went on to win 37-12.

Next—Brother Andrew tells the exciting story of his 10 years as a secret lay missionary behind the Iron and Bamboo Curtains.

USE TIMES-NEWS WANT ADS FOR FAST SELLING RESULTS

from this pocket of protection he faced being mowed down and injured by charging tackles weighing from 230-300 pounds.

One day I broke from the pocket, dodged tackles, found a touchdown. I had taken a risk. The coach was happy about the touchdown, but not about the way I had done it.

As a result, if I have won recognition for any one football maneuver, it is for being what they call "a scrambler."

Scrambling is risky. I do it only in an emergency. Someday I may get hurt doing it. But if there's a chance of it working, I'll go on sticking my neck out.

Let faith and prayer be the power of your stumbling. Some people are going to say that this third guidepost has nothing to do with football—or that you should not use God as a means of achieving success.

These people miss the point. What we believe about God has a lot to do with what kind of persons we are and, therefore, what we do with our lives.

Let me ask you a question: How could I ever get along if I didn't have a Master to pray to. Prayer is a part of my mental conditioning every day, whether I am going down to the field to practice or giving a talk to a youth group or planning some business contacts for the advertising agency where I work.

I thank Him for the freedom of choice He gave me (to follow Him or not as I wish).

I thank Him for the joy of competition in a sport I love. I ask for help with matters of doubt in connection with certain puzzling principles of faith. I pray for my family. I seek through prayer ways I can serve Him.

My father is a minister and I have always been in and about the church, yet I had never felt that my faith had any real direction or power until 1952.

Something happened. The confrontation with Christ made it alive, personal, powerful. There is quite a difference between a faith you accept from others and a faith you reach out for yourself.

Next—Brother Andrew tells the exciting story of his 10 years as a secret lay missionary behind the Iron and Bamboo Curtains.

Next—Brother Andrew tells the exciting story of his 10 years as a secret lay missionary behind the Iron and Bamboo Curtains.

Next—Brother Andrew tells the exciting story of his 10 years as a secret lay missionary behind the Iron and Bamboo Curtains.

Next—Brother Andrew tells the exciting story of his 10 years as a secret lay missionary behind the Iron and Bamboo Curtains.

Next—Brother Andrew tells the exciting story of his 10 years as a secret lay missionary behind the Iron and Bamboo Curtains.

Idaho News

NURSES DEMAND RAISE
BOISE (AP)—Delegates from the Idaho Nurses Association on Thursday told the State Health Board that public health nurses' starting salaries lag behind those paid other nurses.

In a statement to the Senate and House Health and Welfare Committees, board chairman Paul M. Ellis, M.D., asked the legislature for a lump sum appropriation for the Health Department and all state health services.

Betty Daly, executive secretary of I.N.A. and Dorothy Smyke, said nurses in other fields made from \$425 to \$500 per month more in starting salaries.

COMPANY REPORTS
BOISE (AP)—Morrison-Knudsen Co., Inc., of Boise, announced Thursday that the firm and its subsidiaries had earned an estimated \$3,300,000 during 1956.

J.B. Bonny, M. K. president, said the estimate—which would be \$2.61 per share—was based on an audit forecast and would be a slight gain over 1955 profits.

Bonny said directors of the gigantic construction firm voted Thursday to continue a quarterly "40-cent dividend" in 1957, contingent on the year's earnings.

EMMETT MAN SENTENCED
EMMETT (AP)—William Kirkpatrick, 34, Emmett, was sentenced Thursday to 9 1/2 years in prison on a voluntary manslaughter charge.

Judge Edward Lodge fixed the penalty in Seventh District Court. Kirkpatrick was convicted of killing James Walker, 35, an Emmett Police Lieutenant, during an altercation last July.

SUSPECT HELD
POCATELLO (AP)—A 19-year-old rural Blackfoot resident, Robert Lynn Underwood, has been charged with forgery by Pocatello Police and is in Bannock County Jail in lieu of \$5,000 bond.

Underwood is charged with cashing three forged checks totaling nearly \$150 at three Pocatello stores Monday.

Underwood requested a court-appointed attorney.

Group Says Nazi Party No Danger
WASHINGTON (AP)—The American Nazi party is of "little significance to the security of the United States," the House Committee on Un-American Activities reported Thursday.

For this reason, the committee said there is no reason to hold hearings on the group, which is headed by George Lincoln Rockwell and has its headquarters in nearby Arlington, Va.

HE MUST NEVER LIVE TO TELL
what happened behind hospital doors

INTENT TO KILL
CINEMASCOPE

KMVT CHANNEL 11
TWIN FALLS
SATURDAY, FEB. 11th, 10:30 p.m.

FREE INSPECTION ESTIMATES
ROOFING
INSTALLATION REPAIRS

HAVE YOUR ROOFING DONE BEFORE SNOW OR RAIN RUINS YOUR HOME

PROTECT YOUR HOME NOW!

JOHNS-MANVILLE ROOFING BONDED GUARANTEED

OUR SATISFIED CUSTOMERS SPEAK FOR US!

DAN DANIELS ROOFING CO.
"Give Me a Piece to Hang and I'll Roof the World"
151 ROSE ST., TWIN FALLS 733-2179

Legislative Log

Passed by House
HB132 (Judiciary and Rules)
Providing uniform post-conviction procedure act, 59-2.

HB133 (State Affairs) — Allows consolidation of fire protection districts, 60-1.

HB134 (State Affairs) — Amends current employment security act, 67-1.

Introduced in House
HB213 (Education) — Change average daily attendance to basis to distribute funds under the Foundation Education Program.

HB214 (Education) — Changing references to Department of Education from Department of Law Enforcement in driver training act.

HB215 (Education) — Repeat code dealing with adjustment of secondary grades sparsity factor of contiguous high school districts.

HB216 (Appropriations) — Appropriates \$25,000 for investigation of Idaho Savings and Loan clubs.

HB217 (Education) — Change authority for driver training program from Department of Law Enforcement to Department of Education.

Introduced in Senate
SB98 (Judiciary and Rules) — Repeals law permitting deviation from insurance rate schedules.

SB97 (Judiciary and Rules) — Grant beneficiary of trust deed

uncut-uncensored now for all to see ...the nights, the drunken revels, the sins and the sinners, the perverted decadence of the jet set rich who live what they call "the sweet life"

THE FILM THAT SHOCKED THE CRITICS

LA DOLCE VITA
AN EV LINDA and OLIVER LINDA production

Adult Program — Complete Till 9:30

ENDS SAT. MOTOR-VU

TEEN-AGE SUICIDE LINKED TO DRUG USE
VICE SQUAD RAIDS STUDENTS' PILL PARTY

Teen-Age 'Acid Heads' in Local High Schools
Girl Dies From LSD Overdose at Sorority Party

HOSPITAL REPORTS 'PILL SCANDAL' IN LOCAL SCHOOLS
TONIGHT YOU ARE INVITED TO A 'PILL PARTY'

HALLUCINATION GENERATION
MONTGOMERY STONE

ACTUALLY FILMED AT THE GRAND PRIX TRACKS OF THE WORLD!

A LITTLE DEATH EACH DAY... A LOT OF LOVE EVERY NIGHT!

THE YOUNG RAGERS
HALLUCINATION 7:30 OPEN 7:00
RAGERS 9:15 ADULT ADM. \$1.25

Additional power to substitute qualified trustee.
SB98 (Fish and Game) — Make littering state lands or state parks a misdemeanor.

SB99 (Fish and Game) — Increase fine for littering highways from \$50 to \$100.

SB100 (Fish, Game and Recreation) — Increasing from \$10 to \$100 minimum fine for throwing away lighted material on forest or range lands.

SB101 (Industry and Labor) — Removing two-year limitation on death following an injury in industrial accident law.

SB102 (Fish, Game and Recreation) — Authorizing courts to revoke hunting and fishing licenses.

SB103 (Frigation, Reclamation and Public Resources) — Appropriating \$47,355 from general fund to Idaho Water Resource Board for current fiscal year.

SB104 (Finance) — Establishing public junior college fund and earmarking it for revenue from tax on oleomargarine.

Reconsidered by Senate
HB32 (Education) — Provide trustee status of school districts be formed strictly on basis of population. Previously defeated, reconsidered and placed at order permitting amendment.

Special Selective Engagement
MATINEE 2:00 P.M. — EVENINGS 8:00 P.M.
NO SEATS RESERVED
Every Ticketholder Guaranteed a Best

RODGERS — HAMMERSTEIN'S
THE SOUND OF MUSIC

WINNER OF 5 ACADEMY AWARDS Including "Best Picture"

RICHARD HAYDN
ELEANOR PARKER
RICHARD RODGERS OSCAR HAMMERSTEIN II ERNEST LEHMAN

NOW PLAYING
Evenings 8 p.m.
Matinees 2 p.m.
Wed.-Sat.-Sun.

OPENS TONIGHT
IDAHO
ADULTS 1.25
CHILDREN .75
Times Hellet 8:00, 8:40
Death 7:00 - 10:21

A COVENANT WITH DEATH
is a dazzling suspense experience started by a girl who never pulled down the shades.

GEORGE MARRIUS LAURA DEWON VARY BURDICK EARL HOLMES
FRANK CROWE
FRANK CROWE
FRANK CROWE

EXCITING CO-HIT
STEWART GRANGER ELKA SOMMER

in "FRONTIER HELLCAT" IN COLOR

DO IT NOW! FEED YOUR LAWN and ELIMINATE NIGHT CRAWLERS and other lawn pests for 2 years or more with J'301 FERTILIZER WORM & BUG CONTROL Same Old Price, 50 Lbs. Covers 1,000 Sq. Ft. \$3.75 with an applicator furnished Free GLOBE SEED & FEED CO. 224 4th Ave. So. (Truck Lane) NO PARKING METERS

HAVE YOUR ROOFING DONE BEFORE SNOW OR RAIN RUINS YOUR HOME Why put off roofing until your ceilings and interiors are ruined... a new roof in time to your best insurance. FREE INSPECTION ESTIMATES ROOFING BONDING GUARANTEED OUR SATISFIED CUSTOMERS SPEAK FOR US! Call us now about that new roof for your home. DAN DANIELS ROOFING CO. "Give Me a Piece to Hang and I'll Roof the World" 151 ROSE ST., TWIN FALLS 733-2179

HALLUCINATION GENERATION MONTGOMERY STONE ACTUALLY FILMED AT THE GRAND PRIX TRACKS OF THE WORLD! A LITTLE DEATH EACH DAY... A LOT OF LOVE EVERY NIGHT! THE YOUNG RAGERS HALLUCINATION 7:30 OPEN 7:00 RAGERS 9:15 ADULT ADM. \$1.25

A COVENANT WITH DEATH is a dazzling suspense experience started by a girl who never pulled down the shades. GEORGE MARRIUS LAURA DEWON VARY BURDICK EARL HOLMES FRANK CROWE FRANK CROWE FRANK CROWE EXCITING CO-HIT STEWART GRANGER ELKA SOMMER in "FRONTIER HELLCAT" IN COLOR



Dear Abby

By ABIGAIL VAN BUREN

DEAR ABBY: I had been advised many times to investigate my husband's activities when he was supposedly working evenings on a second job. I finally did and found out from his employers that his hours were not what he said they were. I also found out that he was having an affair before and after work with a married woman whose husband worked nights.

When I confronted him with the evidence he said, "You should feel ashamed to have people bring to your face evidence that you aren't capable of holding your husband's hand."

Who do you think should feel ashamed? The husband (and father of six) who professes to be a Christian and got caught in his sin? Or the wife who had so much trust in 22 years that she refused to believe it until she had proof from witnesses?

DEAR MIXED: Tell your husband that you will handle your "shame" and he can handle his. And if he doesn't shape up and fly right, he may have to "pay" for his shame—and plenty!

DEAR ABBY: I am dating a boy who is working his way through college. When he asks me for a date, I panic because I know he is going to ask me where I want to go. I never know whether to say to the movies, bowling, dinner or what because I never know how much money he has to spend.

I am always afraid if I say I want to go somewhere—that costs more than he has, he will borrow the money to take me. You could sure help me. I have a lot of other girls out if you'd answer this in your column.

WORRIED

Marian Martin Pattern



9099
12 1/2 - 24 1/2
by Marian Martin

MOVE FREELY

Move freely about house, garden, pool in a zip-front style rimmed with bright binding. Choose brief or fashionable flare sleeve. Easy-sew.

Printed Pattern—9099: Half Size 12 1/2, 14 1/2, 16 1/2, 18 1/2, 20 1/2, 22 1/2, 24 1/2. Size 16 1/2 requires 3 yards 35-inch.

Sixty-five cents in coins for each pattern—add 15 cents for each pattern for first-class mailing and special handling. Send to Marian Martin, Times-News Pattern Dept., 232 West 18th St., New York, N. Y. 10011. Print name, address with zip, size and style number.

Everything now—115 most-wanted fashions, fabrics, accessories, in new Spring-Summer Pattern Catalog. All airtight Clip coupon in Catalog—choose one pattern free. Send 50c now.

Area Lesson On Good Meals Is Scheduled

JEROME—"Good Meals With Economical Meats" is the topic for a lesson to be given by Mrs. Elvira Jerome County extension home agent, at 8 p.m. Wednesday at the Jerome Methodist Church, 211 N. Buchanan.

The public is invited to attend the meeting, the main purpose of which is to show how to select, care for, prepare and serve economical meat cuts in order to provide good family meals at a low cost.

"As meat usually demands a larger share of the food budget, Mrs. Jerome points out, it is important for every homemaker to get the most for her money. The less expensive meat cuts call for wise selection and preparation methods. Several different methods will be used to prepare meat, and samples will be served.

Anyone interested in lowering their food budget and maintaining good-tasting and nutritious meals is encouraged to attend.

Social Events

Boots and Bustles Square Dance Club is sponsoring its annual Cupid's Caprice at 8:30 p.m. Saturday at the Jerome Moose Hall, Mr. and Mrs. Ross Crispino, Nampa, are the featured callers. All persons attending are asked to bring potluck dishes and their own table service. All square dancers are welcome.

Magic Valley Saintgaulia Club will meet Monday afternoon, at the home of Mrs. Elvira Udey, 1238 7th Ave. E.

All Masons will be honored guests when Twin Falls Chapter No. 29, Order of Eastern Star, meets at 8 p.m. Tuesday at the Masonic Temple.

Amoma Class of the First Baptist Church will meet at 8 p.m. Monday at the church parlors.

FILER—Filer Chapter No. 40, Order of Eastern Star, will have its annual ESTAR Luncheon at 12:30 p.m. Tuesday at the Filer Masonic Temple.

Troubled? Write to Abby, Box 6700, Los Angeles, Cal. 90069. For a personal reply, enclose a stamped, self-addressed envelope.

Relief Society Lesson Given

SHOSHONE—The visiting teachers lesson for the LDS Relief Society was presented by Mrs. Virginia Larsen, Mrs. William Harris conducted and gave a message on importance of the word and type of lesson to be presented.

The spiritual living lesson was presented by Mrs. Ross Boyd, assisted by Mrs. Helen Giles.

Announcement was made that the society will have part of the material necessary to assist preparing the bride's table at church weddings. The material will be rented to users.

Magic Valley Favorites

ENID BURTRUM
Kimberly

Fiesta Bean Cake
2 cups well-cooked Pinto beans, mashed with 1/4 cup liquid from beans
2 cups finely chopped peeled cooking apples
1/2 cup softened butter
1 cup granulated sugar
2 teaspoons vanilla
1 egg, unbeaten
1 cup sifted flour
1 teaspoon soda
1/2 teaspoon salt
1/2 teaspoon cinnamon
1/2 teaspoon ground cloves
1/2 teaspoon allspice
1/2 teaspoon mace
1 cup seedless raisins
1/2 cup walnuts or pecans, chopped

Cook two to four cups of Pinto beans in salted water until very soft. While still hot, using a slotted spoon, lift out two cups of the beans. Place in a deep

ANNIVERSARY OBSERVED
KING HILL—Mr. and Mrs. Robert Robertson hosted a family buffet supper to celebrate their 20th Wedding Anniversary. Guests attended from King Hill, Boise and Glenns Ferry.

bowl along with one-fourth cup of the hot bean liquid. Using electric mixer, whip until smooth and like very thick mashed potatoes. A potato masher can be used.
Combine all dry ingredients and sift. Cream butter, adding sugar gradually until mixture is fluffy. Add vanilla and whole egg. Beat well, then stir in the warm beans. (Beans should be warm, not hot.)
Sift in half of the combined dry ingredients. Add apples, raisins, nuts and the remaining dry

TOPPING
1 cup brown sugar
3 tablespoons flour and pinch

of salt
3 tablespoons butter
1 teaspoon vanilla
1 cup boiling water
Combine ingredients and cook until thick. Then pour over hot

Travel Insurance
Coming AAA Going
\$50,000 Air
\$25,000 Auto and Ped
ONLY \$15 Per Year
"No limit to Number of trips"

IDAHO STATE AAA
424 Main St. Twin Falls
Phone 733-0626

Ingredients. (There is no liquid.) Stir together on low speed only until mixed. Do not beat. Batter will be quite thick.
Pour into a 9 by 12 by 2-inch loaf pan. Bake on middle shelf of oven heated to 350 degrees for about 45 minutes or until done. Pour topping on hot cake and serve while warm.
This cake will keep for about one week before drying out.

Women's Section

The Times-News will pay to each week for the best recipe submitted for Magic Valley Favorites. If you have a favorite recipe, just mail it to the Recipe Department, Women's Page editor. The recipe becomes the property of the Times-News and cannot be returned.

INADEQUATE LIGHTING?

TRADE IN THAT OLD LIGHT FIXTURE ON A NEW DECORATIVE AND FUNCTIONAL LIGHT FIXTURE FROM:

Lysle Keith's
light house

Lighting Fixtures of Distinction
1869 Addison Ave. E. 733-5927

DRINK!

7-UP

7-Up...where there's action!

Bottled & Dist. by 7-UP BOTTLING CO. 50, LOCUST, TWIN FALLS

NEW CARPETING FOR SPRING!

SELECT FROM OVER 1100 SAMPLES
WORLD FAMOUS
★ MAGEE
★ WALTERS
★ MONARCH

OVERNIGHT DELIVERY
CREDIT TERMS

Servicemaster®
Complete House Cleaning

★ EXPERT TILE WORK ★

Putzier's
HOUSE OF CARPET & TILE
1240 BLUE LAKES BLVD. NO., TWIN FALLS

ROSES ARE RED VIOLETS ARE VIOLET on RCA VICTOR TV! And they stay that way

COLOR

GH-692

VALENTINE'S Day Specials!

Give your special someone (even if it's yourself) a very special Valentine this year — put RCA Victor true-to-life color in the living room!

Now at a low Valentine Price of only

\$599.95

THE ENDICOTT! Save \$90.00

For the first time — RCA VICTOR color in a cabinet that swivels! 295 square inches of color so real you'll think you are there! And all the features that make RCA VICTOR the undisputed color television leader!

FREE

A three-pound box of Valentine's chocolates with any RCA VICTOR color television set purchased before February 15. (except maple)

Please don't forget your Valentine again this year. We have many beautiful items that let you say "I love you."

Sterling Jewelry Company
A FAMILY TRADITION SINCE 1910

THE CHAMP!

NOW AT THIS WINNING LOW PRICE

\$169.95

You'll K.O. even the biggest loads of dishes, including pots and pans with these world champion features from RCA WHIRLPOOL.

- TWO FULL-SIZE SPRAY ARMS
- HIGH PRESSURE JET WATER ACTION
- FULL TIME SELF-CLEANING FILTER
- 15 TABLE SETTING CAPACITY

SRP 70

PAUL KALBFLEISCH'S

J & K APPLIANCE

FILER 326-4300
BUHL 543-4349

Today's Market and Financial Report

The Daily Investor

By WILLIAM A. DOYLE

Stocks

NEW YORK (AP)—The stock market trimmed some losses late this afternoon in active trading. Volume for the day was estimated at 2.2 billion shares compared with 1.07 million on Thursday. Gains and losses were pretty evenly balanced but averages showed a decline. United Aircraft, a key stock sank about 4 1/2, Xerox, which is not represented in some popular averages, was off about 3 points in reaction to the calling of an issue of convertible debentures. Magnavox paced a continued recovery by the color television stocks and gained about 1 1/2. It looked like the most active issue for the second straight session. Ling-Temco-Vought advanced about 4 points and Avon Corporation advanced about 1 1/2. Dictaphone, Corning Glass, Motorola, McDonnell Co. and Mack Trucks. Gains of a point or more were made by Admiral, IBM, High Voltage Engineering and Douglas Aircraft. Off about a point were Johnson Controls, Westinghouse and Royal Dutch. Prices were mostly higher on the American Stock Exchange.

Dow Jones, 2 p.m. 30 Industrials, 853.01, off 4.51. 20 Stocks, 277.98, off 0.33. Utilities, 132.07, off 0.10. 65 Stocks, 305.98, off 0.97.

Table with columns for various stock indices and individual stock prices, including Dow Jones, NYSE, and various company names like IBM, Xerox, and Magnavox.

MARKETS AT A GLANCE

Table showing market activity for various commodities like cotton, soybeans, and wheat, with columns for price and change.

GRAIN

Table listing grain prices for various types of wheat, corn, and soybeans, including hard red winter wheat and yellow corn.

GRAIN FUTURES

Table showing futures prices for grain, including wheat, corn, and soybeans, with columns for contract type and price.

Mutual Funds

Table listing mutual fund performance, including names like Affiliated Fund, Commonwealth Fund, and Dreyfus Fund, along with their respective values.

Wool

Table showing wool prices for various grades and types, including New York Wool and other international wool.

Butter and Eggs

Table listing prices for butter and eggs, including various grades of butter and different types of eggs.

GRAIN

Table showing grain prices for various types of wheat, corn, and soybeans, including hard red winter wheat and yellow corn.

GRAIN FUTURES

Table showing futures prices for grain, including wheat, corn, and soybeans, with columns for contract type and price.

Mutual Funds

Table listing mutual fund performance, including names like Affiliated Fund, Commonwealth Fund, and Dreyfus Fund, along with their respective values.

Wool

Table showing wool prices for various grades and types, including New York Wool and other international wool.

Butter and Eggs

Table listing prices for butter and eggs, including various grades of butter and different types of eggs.

Livestock

Table showing livestock prices for various types of cattle, hogs, and sheep, including live cattle and hogs.

SPOT METALS

Table listing spot metal prices for various metals like copper, nickel, and zinc.

Over the Counter

Table showing over-the-counter market activity for various securities and commodities.

Wool

Table showing wool prices for various grades and types, including New York Wool and other international wool.

Butter and Eggs

Table listing prices for butter and eggs, including various grades of butter and different types of eggs.

Legislative Log

SB3 (Business) - Exempting... SB75 (Judiciary and Rules) - Clerical cemetery maintenance... SB108 (Local Government) - Establish system of coordinates...

Legislative Log

SB3 (Business) - Exempting... SB75 (Judiciary and Rules) - Clerical cemetery maintenance... SB108 (Local Government) - Establish system of coordinates...

Legislative Log

SB3 (Business) - Exempting... SB75 (Judiciary and Rules) - Clerical cemetery maintenance... SB108 (Local Government) - Establish system of coordinates...

Legislative Log

SB3 (Business) - Exempting... SB75 (Judiciary and Rules) - Clerical cemetery maintenance... SB108 (Local Government) - Establish system of coordinates...

Q. About seven years ago I purchased a stock... A. Indeed, you can, provided that the stock is absolutely worthless... The stock is still traded at a low price, of course. In such a case, you would have to sell your stock in order to establish your tax loss.

LEGAL ADVERTISEMENTS

NOTICE OF INTENTION TO SELL THE STATE OF IDAHO... NOTICE IS HEREBY GIVEN BY the Board of Trustees of the Southern Idaho Junior College District...

LEGAL ADVERTISEMENTS

NOTICE TO CREDITORS... NOTICE TO CREDITORS OF THE ESTATE OF JAMES EARL RAY...

LEGAL ADVERTISEMENTS

NOTICE TO CREDITORS... NOTICE TO CREDITORS OF THE ESTATE OF JAMES EARL RAY...

LEGAL ADVERTISEMENTS

NOTICE TO CREDITORS... NOTICE TO CREDITORS OF THE ESTATE OF JAMES EARL RAY...

LEGAL ADVERTISEMENTS

NOTICE TO CREDITORS... NOTICE TO CREDITORS OF THE ESTATE OF JAMES EARL RAY...

LEGAL ADVERTISEMENTS

NOTICE TO CREDITORS... NOTICE TO CREDITORS OF THE ESTATE OF JAMES EARL RAY...

LEGAL ADVERTISEMENTS

NOTICE TO CREDITORS... NOTICE TO CREDITORS OF THE ESTATE OF JAMES EARL RAY...

NOTICE TO CREDITORS... NOTICE TO CREDITORS OF THE ESTATE OF JAMES EARL RAY...

NOTICE TO CREDITORS... NOTICE TO CREDITORS OF THE ESTATE OF JAMES EARL RAY...

NOTICE TO CREDITORS... NOTICE TO CREDITORS OF THE ESTATE OF JAMES EARL RAY...

NOTICE TO CREDITORS... NOTICE TO CREDITORS OF THE ESTATE OF JAMES EARL RAY...

NOTICE TO CREDITORS... NOTICE TO CREDITORS OF THE ESTATE OF JAMES EARL RAY...

NOTICE TO CREDITORS... NOTICE TO CREDITORS OF THE ESTATE OF JAMES EARL RAY...

NOTICE TO CREDITORS... NOTICE TO CREDITORS OF THE ESTATE OF JAMES EARL RAY...

NOTICE TO CREDITORS... NOTICE TO CREDITORS OF THE ESTATE OF JAMES EARL RAY...

NOTICE TO CREDITORS... NOTICE TO CREDITORS OF THE ESTATE OF JAMES EARL RAY...

NOTICE TO CREDITORS... NOTICE TO CREDITORS OF THE ESTATE OF JAMES EARL RAY...

NOTICE TO CREDITORS... NOTICE TO CREDITORS OF THE ESTATE OF JAMES EARL RAY...

NOTICE TO CREDITORS... NOTICE TO CREDITORS OF THE ESTATE OF JAMES EARL RAY...

NOTICE TO CREDITORS... NOTICE TO CREDITORS OF THE ESTATE OF JAMES EARL RAY...

NOTICE TO CREDITORS... NOTICE TO CREDITORS OF THE ESTATE OF JAMES EARL RAY...

NOTICE TO CREDITORS... NOTICE TO CREDITORS OF THE ESTATE OF JAMES EARL RAY...

NOTICE TO CREDITORS... NOTICE TO CREDITORS OF THE ESTATE OF JAMES EARL RAY...

NOTICE TO CREDITORS... NOTICE TO CREDITORS OF THE ESTATE OF JAMES EARL RAY...

NOTICE TO CREDITORS... NOTICE TO CREDITORS OF THE ESTATE OF JAMES EARL RAY...

NOTICE TO CREDITORS... NOTICE TO CREDITORS OF THE ESTATE OF JAMES EARL RAY...

NOTICE TO CREDITORS... NOTICE TO CREDITORS OF THE ESTATE OF JAMES EARL RAY...

NOTICE TO CREDITORS... NOTICE TO CREDITORS OF THE ESTATE OF JAMES EARL RAY...

NOTICE TO CREDITORS... NOTICE TO CREDITORS OF THE ESTATE OF JAMES EARL RAY...

NOTICE TO CREDITORS... NOTICE TO CREDITORS OF THE ESTATE OF JAMES EARL RAY...

NOTICE TO CREDITORS... NOTICE TO CREDITORS OF THE ESTATE OF JAMES EARL RAY...

NOTICE TO CREDITORS... NOTICE TO CREDITORS OF THE ESTATE OF JAMES EARL RAY...

NOTICE TO CREDITORS... NOTICE TO CREDITORS OF THE ESTATE OF JAMES EARL RAY...

NOTICE TO CREDITORS... NOTICE TO CREDITORS OF THE ESTATE OF JAMES EARL RAY...

NOTICE TO CREDITORS... NOTICE TO CREDITORS OF THE ESTATE OF JAMES EARL RAY...

NOTICE TO CREDITORS... NOTICE TO CREDITORS OF THE ESTATE OF JAMES EARL RAY...

NOTICE TO CREDITORS... NOTICE TO CREDITORS OF THE ESTATE OF JAMES EARL RAY...

NOTICE TO CREDITORS... NOTICE TO CREDITORS OF THE ESTATE OF JAMES EARL RAY...

NOTICE TO CREDITORS... NOTICE TO CREDITORS OF THE ESTATE OF JAMES EARL RAY...

NOTICE TO CREDITORS... NOTICE TO CREDITORS OF THE ESTATE OF JAMES EARL RAY...

NOTICE TO CREDITORS... NOTICE TO CREDITORS OF THE ESTATE OF JAMES EARL RAY...

NOTICE TO CREDITORS... NOTICE TO CREDITORS OF THE ESTATE OF JAMES EARL RAY...

NOTICE TO CREDITORS... NOTICE TO CREDITORS OF THE ESTATE OF JAMES EARL RAY...

NOTICE TO CREDITORS... NOTICE TO CREDITORS OF THE ESTATE OF JAMES EARL RAY...

NOTICE TO CREDITORS... NOTICE TO CREDITORS OF THE ESTATE OF JAMES EARL RAY...

NOTICE TO CREDITORS... NOTICE TO CREDITORS OF THE ESTATE OF JAMES EARL RAY...

NOTICE TO CREDITORS... NOTICE TO CREDITORS OF THE ESTATE OF JAMES EARL RAY...

NOTICE TO CREDITORS... NOTICE TO CREDITORS OF THE ESTATE OF JAMES EARL RAY...

NOTICE TO CREDITORS... NOTICE TO CREDITORS OF THE ESTATE OF JAMES EARL RAY...

NOTICE TO CREDITORS... NOTICE TO CREDITORS OF THE ESTATE OF JAMES EARL RAY...

NOTICE TO CREDITORS... NOTICE TO CREDITORS OF THE ESTATE OF JAMES EARL RAY...

NOTICE TO CREDITORS... NOTICE TO CREDITORS OF THE ESTATE OF JAMES EARL RAY...

NOTICE TO CREDITORS... NOTICE TO CREDITORS OF THE ESTATE OF JAMES EARL RAY...

NOTICE TO CREDITORS... NOTICE TO CREDITORS OF THE ESTATE OF JAMES EARL RAY...

NOTICE TO CREDITORS... NOTICE TO CREDITORS OF THE ESTATE OF JAMES EARL RAY...

NOTICE TO CREDITORS... NOTICE TO CREDITORS OF THE ESTATE OF JAMES EARL RAY...

NOTICE TO CREDITORS... NOTICE TO CREDITORS OF THE ESTATE OF JAMES EARL RAY...

NOTICE TO CREDITORS... NOTICE TO CREDITORS OF THE ESTATE OF JAMES EARL RAY...

NOTICE TO CREDITORS... NOTICE TO CREDITORS OF THE ESTATE OF JAMES EARL RAY...

NOTICE TO CREDITORS... NOTICE TO CREDITORS OF THE ESTATE OF JAMES EARL RAY...

NOTICE TO CREDITORS... NOTICE TO CREDITORS OF THE ESTATE OF JAMES EARL RAY...

NOTICE TO CREDITORS... NOTICE TO CREDITORS OF THE ESTATE OF JAMES EARL RAY...

NOTICE TO CREDITORS... NOTICE TO CREDITORS OF THE ESTATE OF JAMES EARL RAY...

NOTICE TO CREDITORS... NOTICE TO CREDITORS OF THE ESTATE OF JAMES EARL RAY...

NOTICE TO CREDITORS... NOTICE TO CREDITORS OF THE ESTATE OF JAMES EARL RAY...

NOTICE TO CREDITORS... NOTICE TO CREDITORS OF THE ESTATE OF JAMES EARL RAY...

NOTICE TO CREDITORS... NOTICE TO CREDITORS OF THE ESTATE OF JAMES EARL RAY...

NOTICE TO CREDITORS... NOTICE TO CREDITORS OF THE ESTATE OF JAMES EARL RAY...

NOTICE TO CREDITORS... NOTICE TO CREDITORS OF THE ESTATE OF JAMES EARL RAY...

NOTICE TO CREDITORS... NOTICE TO CREDITORS OF THE ESTATE OF JAMES EARL RAY...

NOTICE TO CREDITORS... NOTICE TO CREDITORS OF THE ESTATE OF JAMES EARL RAY...

NOTICE TO CREDITORS... NOTICE TO CREDITORS OF THE ESTATE OF JAMES EARL RAY...

NOTICE TO CREDITORS... NOTICE TO CREDITORS OF THE ESTATE OF JAMES EARL RAY...

NOTICE TO CREDITORS... NOTICE TO CREDITORS OF THE ESTATE OF JAMES EARL RAY...

NOTICE TO CREDITORS... NOTICE TO CREDITORS OF THE ESTATE OF JAMES EARL RAY...

NOTICE TO CREDITORS... NOTICE TO CREDITORS OF THE ESTATE OF JAMES EARL RAY...

NOTICE TO CREDITORS... NOTICE TO CREDITORS OF THE ESTATE OF JAMES EARL RAY...

NOTICE TO CREDITORS... NOTICE TO CREDITORS OF THE ESTATE OF JAMES EARL RAY...

NOTICE TO CREDITORS... NOTICE TO CREDITORS OF THE ESTATE OF JAMES EARL RAY...

NOTICE TO CREDITORS... NOTICE TO CREDITORS OF THE ESTATE OF JAMES EARL RAY...

NOTICE TO CREDITORS... NOTICE TO CREDITORS OF THE ESTATE OF JAMES EARL RAY...

NOTICE TO CREDITORS... NOTICE TO CREDITORS OF THE ESTATE OF JAMES EARL RAY...

NOTICE TO CREDITORS... NOTICE TO CREDITORS OF THE ESTATE OF JAMES EARL RAY...

NOTICE TO CREDITORS... NOTICE TO CREDITORS OF THE ESTATE OF JAMES EARL RAY...

NOTICE TO CREDITORS... NOTICE TO CREDITORS OF THE ESTATE OF JAMES EARL RAY...

NOTICE TO CREDITORS... NOTICE TO CREDITORS OF THE ESTATE OF JAMES EARL RAY...

NOTICE TO CREDITORS... NOTICE TO CREDITORS OF THE ESTATE OF JAMES EARL RAY...

NOTICE TO CREDITORS... NOTICE TO CREDITORS OF THE ESTATE OF JAMES EARL RAY...

NOTICE TO CREDITORS... NOTICE TO CREDITORS OF THE ESTATE OF JAMES EARL RAY...

NOTICE TO CREDITORS... NOTICE TO CREDITORS OF THE ESTATE OF JAMES EARL RAY...

NOTICE TO CREDITORS... NOTICE TO CREDITORS OF THE ESTATE OF JAMES EARL RAY...

NOTICE TO CREDITORS... NOTICE TO CREDITORS OF THE ESTATE OF JAMES EARL RAY...

NOTICE TO CREDITORS... NOTICE TO CREDITORS OF THE ESTATE OF JAMES EARL RAY...

NOTICE TO CREDITORS... NOTICE TO CREDITORS OF THE ESTATE OF JAMES EARL RAY...

NOTICE TO CREDITORS... NOTICE TO CREDITORS OF THE ESTATE OF JAMES EARL RAY...

NOTICE TO CREDITORS... NOTICE TO CREDITORS OF THE ESTATE OF JAMES EARL RAY...

NOTICE TO CREDITORS... NOTICE TO CREDITORS OF THE ESTATE OF JAMES EARL RAY...

NOTICE TO CREDITORS... NOTICE TO CREDITORS OF THE ESTATE OF JAMES EARL RAY...

NOTICE TO CREDITORS... NOTICE TO CREDITORS OF THE ESTATE OF JAMES EARL RAY...

NOTICE TO CREDITORS... NOTICE TO CREDITORS OF THE ESTATE OF JAMES EARL RAY...

NOTICE TO CREDITORS... NOTICE TO CREDITORS OF THE ESTATE OF JAMES EARL RAY...

NOTICE TO CREDITORS... NOTICE TO CREDITORS OF THE ESTATE OF JAMES EARL RAY...

NOTICE TO CREDITORS... NOTICE TO CREDITORS OF THE ESTATE OF JAMES EARL RAY...

NOTICE TO CREDITORS... NOTICE TO CREDITORS OF THE ESTATE OF JAMES EARL RAY...

NOTICE TO CREDITORS... NOTICE TO CREDITORS OF THE ESTATE OF JAMES EARL RAY...

NOTICE TO CREDITORS... NOTICE TO CREDITORS OF THE ESTATE OF JAMES EARL RAY...

NOTICE TO CREDITORS... NOTICE TO CREDITORS OF THE ESTATE OF JAMES EARL RAY...

NOTICE TO CREDITORS... NOTICE TO CREDITORS OF THE ESTATE OF JAMES EARL RAY...

NOTICE TO CREDITORS... NOTICE TO CREDITORS OF THE ESTATE OF JAMES EARL RAY...

NOTICE TO CREDITORS... NOTICE TO CREDITORS OF THE ESTATE OF JAMES EARL RAY...

NOTICE TO CREDITORS... NOTICE TO CREDITORS OF THE ESTATE OF JAMES EARL RAY...

NOTICE TO CREDITORS... NOTICE TO CREDITORS OF THE ESTATE OF JAMES EARL RAY...

NOTICE TO CREDITORS... NOTICE TO CREDITORS OF THE ESTATE OF JAMES EARL RAY...

NOTICE TO CREDITORS... NOTICE TO CREDITORS OF THE ESTATE OF JAMES EARL RAY...

NOTICE TO CREDITORS... NOTICE TO CREDITORS OF THE ESTATE OF JAMES EARL RAY...

NOTICE TO CREDITORS... NOTICE TO CREDITORS OF THE ESTATE OF JAMES EARL RAY...

NOTICE TO CREDITORS... NOTICE TO CREDITORS OF THE ESTATE OF JAMES EARL RAY...

NOTICE TO CREDITORS... NOTICE TO CREDITORS OF THE ESTATE OF JAMES EARL RAY...

NOTICE TO CREDITORS... NOTICE TO CREDITORS OF THE ESTATE OF JAMES EARL RAY...

NOTICE TO CREDITORS... NOTICE TO CREDITORS OF THE ESTATE OF JAMES EARL RAY...

NOTICE TO CREDITORS... NOTICE TO CREDITORS OF THE ESTATE OF JAMES EARL RAY...

NOTICE TO CREDITORS... NOTICE TO CREDITORS OF THE ESTATE OF JAMES EARL RAY...

NOTICE TO CREDITORS... NOTICE TO CREDITORS OF THE ESTATE OF JAMES EARL RAY...

NOTICE TO CREDITORS... NOTICE TO CREDITORS OF THE ESTATE OF JAMES EARL RAY...

NOTICE TO CREDITORS... NOTICE TO CREDITORS OF THE ESTATE OF JAMES EARL RAY...

NOTICE TO CREDITORS... NOTICE TO CREDITORS OF THE ESTATE OF JAMES EARL RAY...

NOTICE TO CREDITORS... NOTICE TO CREDITORS OF THE ESTATE OF JAMES EARL RAY...

NOTICE TO CREDITORS... NOTICE TO CREDITORS OF THE ESTATE OF JAMES EARL RAY...

NOTICE TO CREDITORS... NOTICE TO CREDITORS OF THE ESTATE OF JAMES EARL RAY...

NOTICE TO CREDITORS... NOTICE TO CREDITORS OF THE ESTATE OF JAMES EARL RAY...

NOTICE TO CREDITORS... NOTICE TO CREDITORS OF THE ESTATE OF JAMES EARL RAY...

NOTICE TO CREDITORS... NOTICE TO CREDITORS OF THE ESTATE OF JAMES EARL RAY...

NOTICE TO CREDITORS... NOTICE TO CREDITORS OF THE ESTATE OF JAMES EARL RAY...

NOTICE TO CREDITORS... NOTICE TO CREDITORS OF THE ESTATE OF JAMES EARL RAY...

NOTICE TO CREDITORS... NOTICE TO CREDITORS OF THE ESTATE OF JAMES EARL RAY...

NOTICE TO CREDITORS... NOTICE TO CREDITORS OF THE ESTATE OF JAMES EARL RAY...

NOTICE TO CREDITORS... NOTICE TO CREDITORS OF THE ESTATE OF JAMES EARL RAY...

NOTICE TO CREDITORS... NOTICE TO CREDITORS OF THE ESTATE OF JAMES EARL RAY...

NOTICE TO CREDITORS... NOTICE TO CREDITORS OF THE ESTATE OF JAMES EARL RAY...

NOTICE TO CREDITORS... NOTICE TO CREDITORS OF THE ESTATE OF JAMES EARL RAY...

NOTICE TO CREDITORS... NOTICE TO CREDITORS OF THE ESTATE OF JAMES EARL RAY...

NOTICE TO CREDITORS... NOTICE TO CREDITORS OF THE ESTATE OF JAMES EARL RAY...

NOTICE TO CREDITORS... NOTICE TO CREDITORS OF THE ESTATE OF JAMES EARL RAY...

NOTICE TO CREDITORS... NOTICE TO CREDITORS OF THE ESTATE OF JAMES EARL RAY...

NOTICE TO CREDITORS... NOTICE TO CREDITORS OF THE ESTATE OF JAMES EARL RAY...

NOTICE TO CREDITORS... NOTICE TO CREDITORS OF THE ESTATE OF JAMES EARL RAY...

NOTICE TO CREDITORS... NOTICE TO CREDITORS OF THE ESTATE OF JAMES EARL RAY...

NOTICE TO CREDITORS... NOTICE TO CREDITORS OF THE ESTATE OF JAMES EARL RAY...

NOTICE TO CREDITORS... NOTICE TO CREDITORS OF THE ESTATE OF JAMES EARL RAY...

NOTICE TO CREDITORS... NOTICE TO CREDITORS OF THE ESTATE OF JAMES EARL RAY...

NOTICE TO CREDITORS... NOTICE TO CREDITORS OF THE ESTATE OF JAMES EARL RAY...

NOTICE TO CREDITORS... NOTICE TO CREDITORS OF THE ESTATE OF JAMES EARL RAY...

NOTICE TO CREDITORS... NOTICE TO CREDITORS OF THE ESTATE OF JAMES EARL RAY...

NOTICE TO CREDITORS... NOTICE TO CREDITORS OF THE ESTATE OF JAMES EARL RAY...

NOTICE TO CREDITORS... NOTICE TO CREDITORS OF THE ESTATE OF JAMES EARL RAY...

NOTICE TO CREDITORS... NOTICE TO CREDITORS OF THE ESTATE OF JAMES EARL RAY...

NOTICE TO CREDITORS... NOTICE TO CREDITORS OF THE ESTATE OF JAMES EARL RAY...

NOTICE TO CREDITORS... NOTICE TO CREDITORS OF THE ESTATE OF JAMES EARL RAY...

NOTICE TO CREDITORS... NOTICE TO CREDITORS OF THE ESTATE OF JAMES EARL RAY...

NOTICE TO CREDITORS... NOTICE TO CREDITORS OF THE ESTATE OF JAMES EARL RAY...

Along Fences and Canals

Jim Kast will work at the 101 Ranch, east of King Hill, owned by his parents, Mr. and Mrs. Charles Kast. The Kasts have been living in Pocatello, where they attended Idaho State University.

Mr. and Mrs. Gerald Portlock and family have moved from the former Trowbridge ranch south of King Hill, to a ranch at Hammett. Mr. Portlock is employed at the Sallor Creek project west of Glenns Ferry.

Mr. and Mrs. Elmer Young and children are getting ready to have a farm sale and moving to Washington state, near Spokane where Mr. Young will work for an artificial insemination company. He has represented the Curtiss Company in this area for several years.

Farmers at Tuttle are busy with farm operations. Walter Bolder and Raynard Wright are plowing and Dean Williams is spreading barnyard fertilizer. Many are also spreading commercial fertilizer as well.

Raymond Butler, Hansen, lost a young calf recently when it had to be shot, the result of an attack by a pack of dogs. He asked that people keep their dogs tied or penned at night.

Lambing is in full swing at the Willford Wrigley ranch south of View. The Wrigleys are living in their trailer house so Mrs. Wrigley can cook for the men who are assisting with the lambing. They include Don Wrigley, Rex Wrigley, Gale Wrigley and two hired men.

Third Annual Idaho Horse Short Course Set At Jerome

JEROME—The Jerome County Fair and Paces, together with the University of Idaho, will co-sponsor the third annual University of Idaho Horse Short Course March 16 and 17 at Jerome.

Featured instructor will be R. A. (Rube) Long, a rancher of Fort Rock, Ore., who will demonstrate his method of handling a green horse.

ASC Reports On Program For Lincoln

SHOSHONE—A voluntary feed grain program was available to Lincoln county farmers in 1966 through the Agricultural Stabilization and Conservation Office.

Feed grains include corn, barley and grain sorghum with participation in barley being high.

The program was designed to raise farm income, reduce feed grain costs to taxpayers by reducing the storage costs of grain held in government inventory.

Participating feed grain producers divert eligible cropland from feed grain production for conservation uses.

There were 307 farms eligible, 60 participated and a total diverted acreage of 473. Total payments made on these amounted to \$22,638.

There were 285 farms participating in the wheat diversion program through the ASC in this county last year.

Diversion payments on acres amounted to \$5,458, with certificate payments made in amount of \$288,968, to make a total of \$294,426.

The 1966 voluntary wheat diversion program provided for diversion acreage from the production of wheat to conserving crops and planting within permitted acreages. This program was designed to maintain wheat income, reduce the surplus and keep program costs down.

Participating farmers planting wheat were issued certificates for 45 per cent of their normal yield. The certificates were valued at \$1.32 per bushel, representing the difference between loan price and the parity price of domestic wheat. Participation in this program continues to be good.

FIRST... and Best...

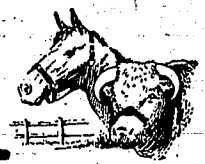
and still MOST COMPLETE LIQUID FERTILIZER SERVICE
FARM SERVICE
Kimberly 423-5586

- Resident Agronomist
- Our Own Laboratory
- Local Formulation
- Years of Magic Valley records
- Small enough for you to know

And the better you know and work with
FARM SERVICE
THE BETTER CROPS YOU'LL HAVE



Farm AND Ranch



Magic Valley's Week-End Farm Paper

SECTION



HIS DESCRIPTION of himself as "old and ornery—and a little bit on the mean side" falls a little bit after five minutes of conversation with Roscoe C. Rich, Burley sheepman and 1967 Magic Valley Stockman's Hall of Fame honoree. Mr. Rich runs 8,000 head of ewes in partnership with his two sons, Roscoe J. and Elwood M. Rich, and uses draft teams to feed them. (Times-News photo)

Burley Man Describes Self As "Little Bit On Mean Side"

He tried a frown first, but it was as out of place as a dandruff on Yul Brynner's eyelid. Then he tried growling "I'm getting old and ornery—and a little bit on the mean side," but that didn't work either. So he gave up the effort and, with a nasal charm, said "Come on—I'm taking you to lunch."

And then Roscoe C. Rich, respected Burley sheepman and 1967 Magic Valley Livestock Hall of Fame honoree, proceeded to do just that.

Mr. Rich has been in the sheep business for more than 50 years, and currently runs sheep operations in the area and 8,000 head of ewes in equal partnership with his two sons, Roscoe J. and Elwood M. Rich, and uses draft teams to feed them.

Price Spread Increasing, Agent Notes

JEROME—A report from Wilmer G. Priest, Jerome County Agricultural Extension Agent, on where the consumer's dollars spent on beef go indicates that the difference between what the farmer received for U. S. Choice Grade cattle and what the customer pays for U. S. Choice Beef at retail increased 12.8 cents per pound between 1949 and 1964. This is an increase of 55 per cent in 16 years.

The farm-retail price spread are lambled on the range and grazed on 10,000 acres of deeded land. The company also leases Idaho State, U.S. Forest Service and Bureau of Land Management land capable of accommodating 18,000 head of sheep.

Approximately 50 head of horses enter the picture too, 1931 to 1932. One of what he considers his more important contributions to his home state is his 11-year chairmanship of the Idaho Highway Board. He headed the board from the time of its creation in 1951 until his retirement in 1962.

In addition to the sheep, the Rich operation includes 160 acres of farm land four miles east of Rupert, six draft teams and a few cattle. The sheep list of honors.

Feb. 10-11, 1967
Twin Falls Times-News 9

increase resulted from a 9.1 cent increase in wholesale retail tail spread and a 3.5 cent increase in the farm-wholesale spread.


A typical example of the returns from a steer from a ranch in Montana to retail in San Francisco, shows the following cuts in the consumer's dollar. The original rancher receives 30.9 cents, the feeder 23.9 cents, marketing and transportation take 2.9 cents, packer-wholesaler 11.2 cents and retailer 31.1 cents.

In analyzing these figures, Priest notes that retailing receives the biggest cut, with the original producer receiving the second largest share.

GIVES DEMONSTRATION
Lynn Ramseyer was among 4-H members who gave safety demonstrations at the annual meeting of the Idaho Farm Safety committee recently in Boise.

USE TIMES-NEWS WANT ADS FOR FAST SELLING RESULTS

FINEST UTAH SLACK
Water Washed-Oil Treated
\$17.00 per ton delivered.
Intermountain Fuel Co.
733-6621 — Twin Falls



Keeping costs down on the farm

More than thirty years ago, Pacific Supply Cooperative was founded... out of necessity. Stated purpose was "to provide unity of effort in buying."

In those depression days, Northwest farmers were "manufacturers" of food and fibre but, as individuals, they lacked the buying muscle any industrial manufacturer had to have to survive.

Pacific Supply gives over 100,000 Northwest growers the combined purchasing power needed to keep the cost of production supplies down on the farm, at levels reasonable enough to make a profit and stay in business.

The seed of Pacific's original objective has grown in purpose, cultivated and fertilized by these policies—all aimed at serving the expanding needs of Northwest farmers:

- WITH HONEST PRICING** insuring the same fair price to any buyer of the same quantity and service, retaining a reasonable profit for Pacific cooperatives to expand future services to farmers.
- WITH HIGHEST LEVEL OF SERVICE**, both routine and emergency, to give Northwest farmers the kind of technical assistance and grow-how only a farmer-dedicated business like Pacific can provide.
- WITH TIMELY AVAILABILITY** of refined fuels, chemicals and fertilizer products delivered to Northwest farmers when and where they need them.
- WITH ASSURED QUALITY** of every product that bears the Circle P emblem, the sure sign for farmers.
- WITH AGRICULTURAL RESEARCH** to help Northwest farmers meet tomorrow's demands for technological advances in agricultural production.
- WITH CREDIT AND MANAGEMENT SERVICE** for farmers and associations to help Northwest growers succeed as agri-businessmen.


As we better serve the needs of Northwest agriculture, we better serve all mankind. "We believe that the agricultural industry, which can be victimized by nature, should not be plagued by problems over which man has a degree of control—namely service, price and availability of necessary supplies."

PACIFIC SUPPLY COOPERATIVES
for farmers

weed control meeting

Season-long weed control for...

- dry beans
- alfalfa seed
- other crops



- You're Invited
- FEBRUARY 14—TWIN FALLS—1:30 P.M., HOLIDAY INN
 - FEBRUARY 15—JEROME—2:00 P.M., WOOD'S CAFE
 - FEBRUARY 16—BURLEY—1:30 P.M., NATIONAL HOTEL
 - FEBRUARY 17—PAUL—1:30 P.M., AMERICAN LEGION BLDG.
 - FEBRUARY 21—BUHL—1:30 P.M., R & R CAFE

MAGIC VALLEY GROWERS, INC.
CURRY JEROME



THE TWIN FALLS team of Future Farmers of America first place in a recent district crop contest. Members of the group from left, are Donald Norris, who was also first high individual; Archle Quessel, and Keith Detmer. (Davis photo)

FFA Contest Slated For Wednesday

SHOSHONE—The West Magb Valley district FFA Parliamentary contest will be held at 7 p.m. Wednesday at the Shoshone High School gymnasium.

The contest will be based on knowledge of parliamentary law, logical debate and ability to conduct and participate in efficient business meetings using "Roberts Rules of Order."

There are twelve Future Farmer Chapters in the West Magb Valley district: Kimberly, Twin Falls, Filer, Buhl, Castleford, Hagerman, Carey, Wendell, Jerome, Gooding, Camas and Shoshone.

Each team will participate in four nine minute sessions: three sessions in "floor debate, motions and business" and one session in conducting meetings.

Each team consists of six members. The teams are judged on logic of debate, knowledge and use of parliamentary procedure skills, voice, poise and sportsmanship.

The teams placing first and second in the district contest will compete with the first and second place teams from the East Magb Valley district at a later date to determine which team will enter the state contest.

The state parliamentary contest will be held at Burley the first week of April during the Idaho State Future Farmers Convention.

Judges for the district contest, Feb. 15 will be Niel Cross, Valley High School agriculture teacher; Robert Day, Carey High School principal, and Herschel Boydston, College of Southern Idaho.

Moore's Sell Horses At Denver Show

MOORE—Mr. and Mrs. L. W. Moore returned recently from the National Livestock Show at Denver, where they sold three of their Appaloosa horses. They were accompanied by Mr. and Mrs. Oren Jones, Hollister rancher, and Walter McCallie, Twin Falls.

Mr. Moore is president of the National Appaloosa Horse Club, and he attended directors meetings while there.

Walter McCallie helped Mrs. Moore show the horses at the show. The horses sold in the top six prices. They stated this was the largest show ever held in cattle and horses. There were not enough stalls for all the animals.

The Jones were interested in the Charolais cattle, a new breed. There were three new breeds of cattle at the show.

Farmers Can Participate In Program

BOISE — Bill Barnes, Jr., ASC Committee chairman reports that farmers may participate in the 1967 National Feed Grain Program the period Feb. 6 through 17.

Options are offered for various types of farm crops and still make it possible for the farmer to qualify for Certificates or Price Supplementments.

Options for program beneficiaries farm operator must sign the ASC county office no more than the wheat, corn or feed grain base, maintain the farm's base.

There is no diversion of acres or planting as required in contracts for wheat. The farm may plant the full allotment which has been increased 10 per cent over the 1966 allotment.

Cross compliance provisions still in effect, which require that the farm keep within the allotment or permit acreage on any other farm which there is an interest.

Latest Snow Measurements Indicate Encouragement

Water content on snow courses of the Twin Falls Soil Conservation District watershed ranges from just below normal to twice the average reports of the past ten years.

Glen Nelson, chairman of the board of supervisors said, the February first measurements show the snow pack and water content are well ahead of last year throughout the watershed. In most cases both snow and water content are also above average. Mr. Nelson said soil moisture is also improving steadily indicating the ground is not frozen under the snow.

Some snow melting is reported in lower elevations and on the west end of the watershed.

By snow course the snow depth, water content of this year and the water content last year and for the ten year average is:

Magb Mountain—55.8 inches of snow, 10.4 inches of water, 6.7 inches of water last year and 10.2 inches of water average.

Deadline Ridge, 42.3 inches of snow, 13.2 inches water, 8.2 and 10.5 inches; Shoshone Basin, 11.6 inches, 3.0 inches, 1.6 inches and 3.4 inches; Hummingbird Springs, 57 inches of snow, 17 inches water, 8.6 and 8.1 inches water; Pole Creek, 48.1 inches snow, 14.7 inches water, 8.2 and 10.2 inches water; Goat Creek, 39 inches snow, 11 inches water, 4.1 and 8.8 inches water; Cedar Creek, 18 inches snow, 5.5 inches water, 2.9 and 6 inches water; Bear Creek, 51 inches snow, 15.2 inches water, 8.7 and 10.6 inches water; Red Point, 43 inches snow, 12.9 inches water, 3.4 and 4.7 inches water and Wilson Creek, 42.0 inches snow, 12.6 inches water, 5.5 and 6.2 inches water. The water content averages for Red Point and Wilson Creek represent a five-year period only.

Loan Figures Of Wheat Reported

BOISE — Through Dec. 31, 1966, Oregon, Washington and Idaho wheat producers had placed 23 million bushels of the 1966 wheat crop under loan.

Repaid loans through Dec. 31, 1966, for the three states amounted to three million bushels. This left 20 million bushels outstanding under loan.

Big Water Pumps

2 ONLY TO SELL

Goulds, like new. 2,000 gallons per minute; 470 foot head; 350 HP motor; 2,400 volts.

\$4,500.00 each

DUANE McALLISTER

1265 Elm St. Mtn. Home, Phone 834-2268 or Mt. Home 587-3787

Moore's Sell Horses At Denver Show

MOORE—Mr. and Mrs. L. W. Moore returned recently from the National Livestock Show at Denver, where they sold three of their Appaloosa horses. They were accompanied by Mr. and Mrs. Oren Jones, Hollister rancher, and Walter McCallie, Twin Falls.

Mr. Moore is president of the National Appaloosa Horse Club, and he attended directors meetings while there.

Walter McCallie helped Mrs. Moore show the horses at the show. The horses sold in the top six prices. They stated this was the largest show ever held in cattle and horses. There were not enough stalls for all the animals.

The Jones were interested in the Charolais cattle, a new breed. There were three new breeds of cattle at the show.

Moore's Sell Horses At Denver Show

MOORE—Mr. and Mrs. L. W. Moore returned recently from the National Livestock Show at Denver, where they sold three of their Appaloosa horses. They were accompanied by Mr. and Mrs. Oren Jones, Hollister rancher, and Walter McCallie, Twin Falls.

Mr. Moore is president of the National Appaloosa Horse Club, and he attended directors meetings while there.

Walter McCallie helped Mrs. Moore show the horses at the show. The horses sold in the top six prices. They stated this was the largest show ever held in cattle and horses. There were not enough stalls for all the animals.

The Jones were interested in the Charolais cattle, a new breed. There were three new breeds of cattle at the show.

Think Now About SPRING SEEDS Ask us to lay 'em away for you.

GLOBE SEED & FEED CO.

It's TIME!

Yes! It's time to plan your fertilizer for the season... see us for your special needs in all your...

DRY or LIQUID FERTILIZERS

Mixed and blended to your own specifications and/or special needs.

LIQUID FERTILIZER

Let us help you plan your "BETTER CROP" for next fall right now!

BULK BLEND FERTILIZING

SPREADER TRUCKS SOIL TESTING

RANGEN

Quality 543-4338-BUHL

ATTEND THE AUCTION!

EVERYTHING MUST GO!

Located from the Bank Corner at Wendell, Idaho, 4 1/2 miles West, 5 1/2 miles South, 1/2 mile West and 1/2 mile South or from the West Point Store, 2 miles South, 1/2 mile West, and 1/2 mile South.

MONDAY, FEBRUARY 13

SALE TIME: 11:00 A.M. Lunch on Grounds by Westpoint Grange

Tractors, Combines, Hay Balers

1957 FORD 741 TRACTOR in A-1 condition double wheel in front, live lift, fur rubber 1954 IHC SUPER "M" TRACTOR in A-1 condition, single front and 3 PH. Good rubber IHC "M" TRACTOR in A-1 condition, double front and good rubber IHC 551 STIRING DIE PLOW HAY BALER in top condition DEARBORN SINGE HAY BALER with good Wisconsin motor COOP 12 FT. SELF PROPELLED COMBINE, machine in excellent condition, met needs a little repair, but runs good CASE 4 6 COMBINE in fair condition. Good engine

Ground Equipment

CASE 3 SECTION STEEL HARROW, 6 ft. section with drawbar, 11' long IHC COMPLETE MODEL 250 BEET AND BEAN CULTIVATOR FOR "M" SELF 3 BAR BEET AND BEAN CULTIVATOR, 3 PH IHC HANGON-18" PLOW FOR "M" TRACTOR IHC HANGON PLOW FOR "M" TRACTOR in metalboards

MISCELLANEOUS

Heavy duty swing set, Merry Hill garden tractor with roller-till and single corrugator, gas engine, 4 IHC hydraulic rams, 2 tractor umbrellas, stock 3000 for 1/2-ton tractor plows, Harford stock and set of sheep nut and ball cabinet with 12 drawers, Heat house for "M", Heat house for "M", Baled hay forks, 2 IHC fancoils, low-hand 109th-hand weed sprayer, weed burner, cultivator tool, forks, shovels, 2 narrow Ford front wheels, 3 quarter double rigging saddles and other miscellaneous articles too numerous to mention.

HORSES

Black mare, smooth mouth, real good hide horse. Will be sold with a month old sorrel stud colt at side, Mare is bred back. (A THREE IN ONE PACKAGE).

13 Registered & Grade Holstein Cows 13

AUCTIONEER'S NOTE:

All cows are out of the former A. H. Jagels herd. All are artificial cows and are either bred back to the Valley or to a Reg. Holstein bull. The cows are of good size and giving a good flow of milk. Breeding dates and production records will be given day of sale.

DOTTIE — Registered Holstein cow, fresh 90 days, with 5th calf
RICKLY — Registered Holstein cow, fresh 60 days, with 5th calf
HILL — Registered Holstein cow, milking, with 7th calf
PEE WEE — Grade Holstein cow, milking, with 5th calf
JUNE — Grade Holstein cow, milking, with 1st calf
BETTY — Grade Holstein cow, milking, with 1st calf
INKA — Registered Holstein cow, fresh 120 days, with 5th calf
FERN — Registered Holstein cow, milking, with 6th calf
LIZZIE — Grade Holstein cow, springer due by dry of anie with 3rd calf
SPRING — Registered Holstein cow, springer due April 1st with 5th calf
LIMPY — Registered Holstein cow, fresh 60 days, with 5th calf
OPAL — Registered Holstein cow, will be fresh by day of anie with 5th calf

YOUNG LIVESTOCK

2 Registered Holstein Heifers, 2 years old, brangs vaccinated and open
5 Holstein Heifers, 15-18 months old, brangs vaccinated and open
6 Holstein Heifers, 7-8 months old, brangs vaccinated and open
2 Holstein Bull calves, 8-6 months old
4 Holstein Heifer calves, 1-4 months old

All Young Livestock Are Out of the Above Cows.

HOUSEHOLD GOODS

White Treadle sewing machine, Sew Gan Electric straight stitch sewing Machine, 3 and tables, corner table, overcast chair, Tomlinson electric heater, 4 Simonsen folding chairs, Hampton 20 gauge angle shot gun, 97 Winchester, 14 gauge pump shotgun, Coleman 2 burner camp stove, butane 2 burner camp stove and other household goods.

TERMS: CASH DAY OF SALE.

DAN NEFFENEGGER, Owner

AUCTIONEERS: LYLE MASTERS, Phone Buhl 543-5912 or 543-4392
HAROLD KLAAS, Phone JEROME 324-2685
CLERK: CAL HARPER, Phone Buhl 543-5854 or 543-9983

IDAHO BEST, Inc.

For All of Your Needs In—

FEEDS!

- CHICK STARTER and GROWER
- LAYING MASH
- DAIRY FEEDS
- CALF FEEDS
- CATTLE FEEDS
- SHEEP and SWINE FEEDS
- DOG and RABBIT FEEDS
- HORSE FEEDS

Whatever your needs in any particular type feed see us.

PELLETS or MASH

IN BULK OR BAG... for every need... get our prices

IDAHO BEST, Inc. 733-4583

2 4th Avenue South (Truck Lane) Twin Falls

J. I. CASE DAY

IN TWIN FALLS

NEXT FRIDAY FEBRUARY 17th

SEE THE NEW CASE 1660

WORLD'S LARGEST CAPACITY COMBINE

AS WELL AS THE REST OF THE CASE LINE OF IMPLEMENTS

- FILMS
- FREE COFFEE AND DONUTS

COMBINE SPECIALISTS

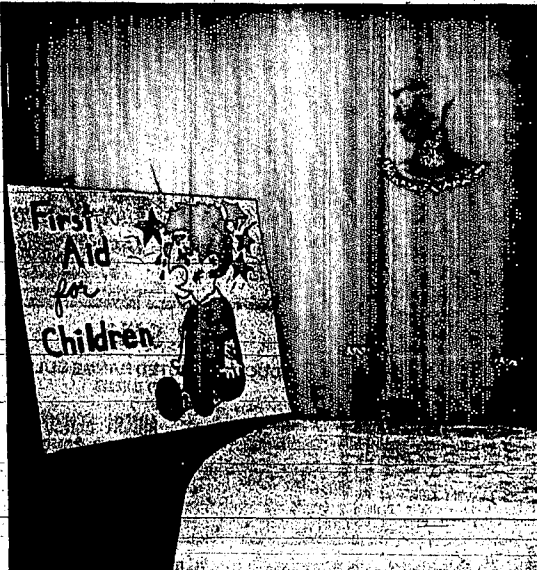
Will be on hand to answer any questions, and/or to help you with your combine problems.

REED TRACTOR CO.

Your J. I. CASE DEALER

"Magic Valley Combine Headquarters"

300 Third Ave. South (Used Machinery Lot)



A WINNING PRESENTATION on safety was given by Lynn Ramseyer, Filer, during the annual meeting of the Idaho Farm Safety Council and the Idaho Safety Council held in Boise.

Safety Presentation Given By Lynn Ramseyer At Meet

BOISE — Lynn Ramseyer, daughter of Mr. and Mrs. Duane Ramseyer, Filer, and member of the "Country Cousins" 4-H club provided one of the most popular presentations during the annual meeting of the Idaho Farm Safety Council recently in Boise.

Lynn, the southcentral district 4-H safety demonstration contest winner, was invited to present her demonstration "First Aid For Children" at the joint meeting for 120 safety leaders, safety engineers, and council members in attendance.

Lynn, a guest of the Farm Safety Committee, was one of five 4-H youngsters invited to present their demonstrations according to Howard Tankersley, secretary of the organization. Other 4-H district contest winners invited included Brenda Yamagata, Blackfoot; Jennifer Gross, Weippe, and Martin Fewkes, Nampa.

Governor Samuelson, who spoke at the luncheon, commended the youngsters for their interest and activities in promoting safety throughout the Gem state.

During the meeting Bill Maxwell, director public relations and advertising, J. R. Simplot Company, Pocatello, was elected chairman of the Idaho Farm Safety Committee. Other officers elected were W. W. Benson, legislator, Bureau of Vital Statistics, vice chairman, and Howard Tankersley, safety specialist, Agricultural Extension Service, secretary.

INDEX-INCREASES
BOISE — The January 15 index of prices received by Idaho farmers showed an increase of four points from the previous month to 271 per cent of its 1910-14 average according to the USDA Crop and Livestock Reporting Service for Idaho.

1967 POTATO PLANTERS
ORDER NOW

- NO PICKS
- MORE PROFIT
- PRECISION PLANTING
- MODEL—FOR ALL FARMS

ACME
FILER, IDAHO

KING COAL
WARBERG'S
733-7371 for Quality

Employment With Opportunity!
Magic Valley Growers, Inc. are seeking the services of a qualified man for Sales and Service in the Curry Operation.
Send Confidential Resume of qualifications to—
Post Office Box 228, Twin Falls, Idaho

A service dedicated to Northwest Farmers

That's what the farmers of America are doing. And they're doing it with fewer farms, less land and fewer farm hands.

How would you like to feed two-hundred million people?

How? By utilizing the important technological advances available, scientific farm planning, and long-term mortgage credit.

The Federal Land Bank has been a leader in the farm mortgage field since its inception in 1917. We have served agriculture in a real and important way.

We are proud to be a member of this important team. And we salute the farmers of the Northwest... Producers of Plenty.

Federal Land Bank

THE FEDERAL LAND BANK ASSOCIATION OF

TWIN FALLS
W. R. Nutting, 249 3rd Ave. E.
738-1877

BURLEY
Olan Kusno, 1248 Overland
878-8347

RUPERT
Robert L. Balch, 428 P St.
426-6681

GOODING
A. McCombs, 121 4th Ave. W.
924-4921

A FARMER-OWNED BANK WHERE YOUR VOICE COUNTS

Sugar Firm Head Examines Lift On Acreage Allotments

OGDEN, Utah — Lifting of acreage allotments may result in a modest increase in sugar-beet plantings under contract to the Amalgamated Sugar Company this spring, but it shouldn't affect the welfare of established beet growers in any respect.

Company president A. E. Benning told directors and stockholders at the firm's recent annual meeting in Ogden that "the release of acreage restrictions does not lessen our interest in, or our need to, reach agreement with our present growers on all points."

Mr. Benning said that he couldn't agree with the contention that the lifting of acreage allotments will lead to overproduction. To the contrary, he said, the industry couldn't have continued to fill the domestic market quota if it hadn't had to go—about 30 per cent of the nation's annual consumption—without expanded acreage.

And if the beet quota couldn't be filled in any one year, he explained, there would be a real danger of having it permanently reduced by legislative action.

Benning said a continuing upward trend in domestic sugar consumption should be encouraging to growers and processors alike. If demand continues active, he noted, the beet industry may qualify for a larger share of the domestic market as early as 1968.

"Sugar prices are strong now, and with the Department of Agriculture administering the Sugar Act in a manner dedicated to achieving prices that will sustain the domestic industry, we can probably look forward to a continuation of higher returns," he said.

"We've gone at least half way down the road in cleaning up our streams," he reported, "but we still have half way to go, and it may cost a good deal more money."

Looking ahead, Benning noted that sugarbeets compete with beans, grain, alfalfa seed and several other crops for grower favor—and that some of these alternatives have come off their price floors in the last two or three years.

However, he also thought that many farmers will be taking a second look at sugarbeets this spring. Last fall's freeze-damaged potato crop in Idaho represented a major economic loss to growers, he explained, and bean prices have also been disappointing lately.

Total Wheat Use For Feed Drops

BOISE — Use of wheat for livestock feed during the last quarter of 1966 declined to less than one-fourth of the amount for feed during the same quarter of 1965.

The USDA Statistical Reporting Service attributes the decline to relatively high wheat prices in relation to other grains.

SEE... DEN SAVILECO
For a New Buick or Olds or any Good Used Car
Ph. 733-8721
712 Main St.
Abbie Urqugen's Buick-Olds, Inc.

EARLY BIRD SALE

FENCING

Light "T"	Heavy "T"
Steel Post	Steel Post
5 foot	5 foot
70c	89c
5 1/2 foot	5 1/2 foot
75c	94c
6 foot	6 foot
79c	99c

FREE 5 Clips with each post.

6 1/2 ft. Split CEDAR POST ea. 45c
4 1/2 ft. Treated 5 CEDAR POST ea. 65c
4" Treated PINE POSTS ea. 58c

See us and save on all your Fencing supplies... WIRE... STAPLES... INSULATORS... ELECTRIC FENCERS... GATES, ETC.

Sale Ends February 25th

FULLER'S FARM & HOME SUPPLY
543-4539 BUHL

NEW '67

drive a **DATSUN** then decide!

Casualty, aren't we? You bet! Because this unique pickup delivers more... including 2,000 lb. capacity... Full synchromesh 4-speed stick shift... w/locking... Mirror, in and outside... Anti-sway bar... vinyl interior... All steel box... 4 wheel drive... 4 top books... and more! Standard fillings, no special tools needed. Parts/service cost to cost.

DRIVE SAFELY DATSUN

DEAN MOTOR CO.
126 2nd Ave. W.

OVERSTOCK SALE!

GOOD USED TRACTORS AND EQUIPMENT (A FEW NEW ITEMS)

TRACTORS	Item No.	Reg. Price	SALE
John Deere 60	935	\$ 895	\$ 750
John Deere 60	930	\$ 800	\$ 700
John Deere 60	934	\$ 850	\$ 700
John Deere 60	916	\$ 950	\$ 795
John Deere 60	778	\$ 950	\$ 795
John Deere 60	765	\$1250	\$ 850
John Deere 40	749	\$ 750	\$ 600
John Deere "A"	620	\$ 495	\$ 375
Massey Ferguson 35D	839	\$1350	\$ 975
Case 800	833	\$2500	\$2150
Case 800	915	\$2550	\$2250
Case 500	819	\$1850	\$1500
MD Farmall	786	\$1350	\$ 975
Massey Ferguson 85G	656	\$2550	\$2050
Ford Jubilee	937	\$1175	\$1025
IHC B275	922	\$1750	\$1475
Case 600	911	\$1750	\$1450
Farmall 450	853	\$2150	\$1850

PLOWS	Item No.	Reg. Price	SALE
John Deere 825A 3-bottom 2-way	933	\$ 825	\$ 750
John Deere 825A 3-bottom 2-way	919	\$ 835	\$ 750
Ford 3-bottom 2-way	861	\$ 550	\$ 450
IHC Tumble	810	\$ 150	\$ 95
IHC Tumble	782	\$ 150	\$ 95
Case Towner 3-bottom 2-way	799	\$ 775	\$ 625
Massey Ferguson 2-bottom 2-way	938	\$ 495	\$ 425

DISCS

JD 9' 3 Pt. Hangan		\$ 350	\$ 250
--------------------	--	--------	--------

COMBINES

John Deere Hi Lo 95 EB 12'	885	\$7250	\$6450
John Deere Hi Lo 95 14'	880	\$6750	\$6000
John Deere 95 14'	751	\$5700	\$5100
John Deere Hi Lo 95 14'	750	\$6750	\$6150
John Deere 55 14'	762	\$2750	\$2150
IHC 141 12' (as is)	664	\$2250	\$1150
IHC 151 12'		\$3650	\$3295

PLANTERS - DRILLS

4 Milton Planters on Bar	576	\$ 340	\$ 250
Oliver 16x6 Drill	931	\$ 325	\$ 250

MISCELLANEOUS

1 Turfmaster King garden tractor and mower	886	\$ 275	\$ 195
Farmhand 150-1-row beet harvester	783	\$2500	\$2150
Imco 2-row beet harvester with toppler and row finder	772	\$3500	\$2500
John Deere 10' Mod. B Roller Harrow	850	\$ 895	\$ 725
Farmhand Spreader with wagon	604	\$ 850	\$ 695
Farmhand Spreader	935	\$ 575	\$ 500
John Deere Model N Spreader		\$ 850	\$ 700
Case Manure Spreader	732	\$ 150	\$ 95
Gehl Hammer Mill	923	\$ 135	\$ 95
4 AC-1" Coil Shanks	921	\$ 65	\$ 55
2 row Wescon beet toppler-windrower	870	\$1500	\$1000
Blackwelder 4-row Beet Thinner	817	\$ 550	\$ 350
6 row Curl Incorporator	787	\$ 650	\$ 525
Lockwood 2-row spud planter	863	\$ 795	\$ 725
Tool bar and 5 corrugators	854	\$ 95	\$ 75
Farmhand 12' Mulcher, 3-point, near new	820	\$ 775	\$ 625
Roll over scraper	790	\$ 100	\$ 50

BALERS

2 New John Deere No. 10 Hi-Density Balers		\$4145	\$2875
John Deere 216WS Wire	888	\$2750	\$2250
John Deere 14T Twine	824	\$ 785	\$ 600
Case 160W Wire	754	\$ 650	\$ 395

FINANCING AVAILABLE

WAIVER OF INTEREST on Tractors until April 1st.
On Combines until August 1st.

GEM EQUIPMENT SALES, INC.

EASTLAND DRIVE SOUTH
PHONE 733-7272

Awards Given For Service At Sessions

About 25 fieldmen and adjusters of the Federal Crop Insurance offices in Eastern Idaho, Magic Valley and Northern Utah attended a three day meeting last week at the Holiday Inn.

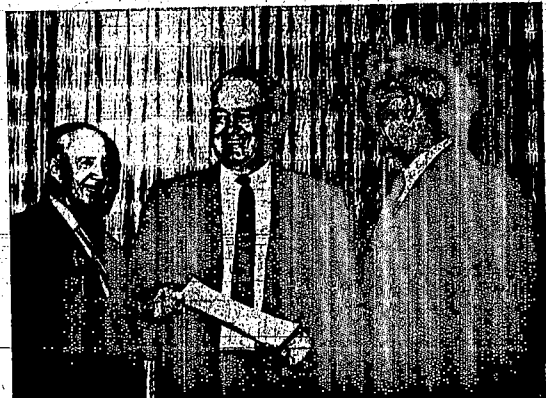
Among the speakers for the sales training sessions were Kenneth Tollefson, Washington, D.C., loss adjustment specialist of the claims management division; E. W. Anderson, Billings, Mont., area director; C. F. Lawson, Spokane, state director; James King, Billings, area sales trainer; Vernon Ingobretson, Billings, insurance analyst; and Forrest Boerner, Billings, loss adjustment specialist.

Douglas Bertoch, Twin Falls, district director of Southern Idaho and Northern Utah counties, was in charge of the meeting.

Also featured on the program was Peyton Winn, Weston, Ore., district director.

One of the highlights of the meeting was the presentation of awards to Dean Coombs, Garland, Utah, for 17 years service as a regular agent for Crop Insurance, and to S. Arden Stevens, Driggs, for 10 years of service.

Also present at the sessions were Mrs. Robert Rayl Jr., Twin Falls, district office manager, and Fay Clark, manager of the Idaho Falls office.



SERVICE AWARDS WERE received by Dean Coombs, left, Garland, Utah, and S. Arden Stevens, center, Driggs, at the Federal Crop Insurance sales training sessions last week in Twin Falls. Douglas Bertoch, right, area director, made the presentations. (Times-News photo)

ASC Modifies Wheat, Grain Signup Period

The wheat and/or feed grain program signup period has been changed to March 17 for all Idaho counties, according to Carl Boyd, chairman of the Twin Falls County ASC Committee. The previous closing date was March 3. The new date for making application is February 6, 1967.

The State Committee has determined a signup period which will insure that all farmers have an opportunity to discuss the programs with ASC county office people and to make up their minds about taking part. In some counties where there are large numbers of farms, there were not enough hours available in the original signup period to accommodate all farmers in the county offices.

Also, bad weather in some areas made a revision of signup time necessary.

Signup is the essential first step toward participation in a farm program. No extension is anticipated for adverse weather or other reasons; therefore,

Price Increase Predicted In Wool Market For Next Year

BOISE — Moderate increases in the price of wool are expected as the 1967 marketing season develops, Quentin D. Banks, marketing information specialist of the University of Idaho extension service, said today in the February issue of "Economic Facts for Idaho Agriculture."

Activity was slow in the last half of 1966, he said, and there is some confusion in the current outlook, but there are prospects for improved returns to wool growers.

World consumption of wool is increasing faster than production, Mr. Banks pointed out. Australian prices were higher at the end of 1966 than they were a year ago.

"Substantial increases in the amount of wool and other textiles imported by the United States have caused uncertainty and concern in many parts of the domestic textile industry," he said.

"There is too much uncertainty for a high level of confidence about future price trends. It seems reasonable, though, to expect modest price increases and more buying activity as the 1967 season develops."

Idaho supplies of potatoes in January 1 were 15 per cent less than a year earlier, the summary said. Despite larger dis-

Prices For Wheat Hold Despite Crop

BOISE — Pacific Northwest cash wheat prices for the past three months have held within a five cent per bushel gain and loss range, but slightly below the levels of the previous three months.

Despite the largest world crop of wheat ever produced, prices held at levels considerably above the effective loan prices. Numerous factors have contributed to continued strength in wheat; the vast quantities of wheat moved to combat famine in India; producer reluctance to release quantities in any large amounts, and adverse weather conditions in our wheat growing areas.

IN KETCHUM & SUN VALLEY
 IT'S KEN ROUNDY'S
ALPINE VILLA MOTOR LODGE

IN TWIN FALLS
 IT'S
KEN ROUNDY'S DELUXE MOTOR LODGE

the BEST in the WEST
 46 UNITS

Failure To Reduce Rail Rate Is Hazardous To Idaho Grain

BOISE — The president of the Idaho Wheat Growers Association has made the statement that it appears the railroads hauling Idaho wheat to market are "stalling" their consideration or rate reduction application in order to take advantage of increasing labor costs.

Ellis Odberg, Genesee, said that three requests to cut shipping charges on grain to California and other coastal points have been submitted to the railroads to give Idaho growers a competitive market position with mid-west and other west coast growing areas.

"Our requests date back to September of last year," Odberg said, "but while competing areas have had lower rates put into use to move this year's crop, Idaho rate adjustments are still awaiting consideration."

Odberg said it appears obvious now that railroad officials are holding off any serious consideration of the Idaho rate applications until the new labor contract negotiations are completed this spring.

He noted that the likely increase in railroad labor costs would push the current Idaho rate requests out of position.

Odberg's charges were supported by Idaho Wheat Commission member Verd Meadows, American Falls, who said that Idaho can no longer stand the special rate concessions made by railroads to competitive grain growing areas.

Meadows explained that grain rates in the Midwest, Great Lakes and Columbia River regions have been cut repeatedly in a battle with trucks and barges.

The apparent failure of the railroads to consider Idaho's rate adjustment requests be-

Directors Meet

KING HILL — The King Hill Irrigation district board of directors discussed plans and problems of the Cleve Ferry siphon at a meeting Tuesday in Boise, at a meeting Tuesday night.

Other representatives from other companies met with the board to discuss their equipment. Donald Flock says a special meeting was held Thursday night to plan the water levy and the budget for 1967.

USE TIMES-NEWS WANT ADS

CUSTOM CLEAN ONLY!

4 LBS 89¢

Troy National LAUNDRY CLEANERS

FOR SALE

PRODUCTION TESTED RANGE BULLS AND HERD SIRES

ARMIN SCHROEDER AND SONS
 American Falls, Idaho
 Phone 226-2007
 226-2179 or 226-2123

ONCE OVER - ALL OVER

With A **HOWARD ROTAVATOR**

Minimum Tillage **NEW** Maximum Results

MODEL 'M' 100" & 130"

Completely Prepares

50 Acres per Day!

ROTAVATION
Does the Equivalent of

PLOWING • DISCING (3 Times) & HARROWING
In One Pass!

LESS TIME in the Field

CUTS FUEL COSTS

A ROTAVATED SEEDBED...

- Holds More Moisture thru Dry Periods
- Warms Up Quicker for Even Germination
- Gives Higher Percentage of Germination

ALL CROP RESIDUES Chopped & Returned to the Soil

LESS COMPACTION No Added Weights Required

There's a HOWARD ROTAVATOR to Fit Every Tractor...

from 17 to 125 h.p.

Wills 40 to 130 lbs
 Tractor Mounted and Trailing Models
 Field & Orchard Types

Howard's Patented Rotor and Blade Design gives the Most Perfect Tillage Ever Known!

Only HOWARD ROTAVATOR HAS SELECTILTIL™

Gives You **4 ROTOR** Choice of **4 SPEEDS**

NO TOOLS REQUIRED!
Change Rotor Speed in Minutes in the Field

LESLIE DAVIS & SON
 IMPLEMENT CO.
 1918 Elizabeth Avenue
 Twin Falls, Idaho

Send FREE ROTAVATOR Literature and information on Soil-Building "Witch" Farming.

I am also interested in the Model "M" Rotavator. I own a _____ (Model) _____ (Make) _____ Tractor

Name _____
 Rte. and Box _____
 City _____ State _____

LESLIE DAVIS & SON
 IMPLEMENT CO.
 1918 Elizabeth Avenue — 733-0403 — Twin Falls

GROWERS CONTEST!

PRIZE CONTEST FOR GROWERS

"Try Your 'BLU-MIN' Luck"

Impossible to Lose - A Prize for Everyone

Since our Dealer Contest went over so big, we are adding you growers to our Prize Program.

We have given up our search for a qualified sales representative and have chosen this way to introduce "BLU-Min" zinc sulphate to you — liquid or dry. Users of only "BLU-Min" brand zinc sulphate will get prize crops as well as tickets for chances on thousands of dollars in prizes each year, such as washers, dryers, stereo, TV, radios, refrigerators, dishwashers, on down to projectors, cameras, bicycles, etc.

There will be additional surprise packages or bonuses for growers who can furnish statistics about their crop yields before and after using "BLU-Min."

Contest dates: **September 1, 1966 to September 1, 1967**
 Drawing of winning numbers **October 1, 1967**

See your favorite dealer to enter. If he does not have the contest rules, write to Bay Zinc Company, 4110 East 11th Street, Tacoma, Wash. 98421 for details, giving your name and address and the dealer you intend to buy from.

Specify "BLU-Min" zinc sulphate. You get sulphur, iron and manganese FREE.

Crops mature 10 days to 2 weeks earlier with use of "BLU-Min" in zinc deficient areas.

"BLU-MIN" ZINC SULPHATE

LIQUID OR DRY & CHELATED LIQUID ZINC

MADE BY

BAY ZINC COMPANY, Inc.

LARGEST PRODUCER OF AGRICULTURAL ZINC IN THE WEST

4110 East 11th Street Tacoma, Washington 98421 Market 7-2275

Your favorite dealer has entry blanks and the rules. See him or fill out and mail this blank to Bay Zinc Co. Rules will be sent to you.

GROWERS ENTRY BLANK FOR GROWERS ZINC CONTEST.

Mail this ad or blank to Bay Zinc Co., 4110 East 11th Street, Tacoma, Wash.

Name _____ Address _____

Number of acres you intend to use Blu-Min Zinc on _____

Amount of Blu-Min Zinc you intend to use per acre _____

Crop on which you intend to use Blu-Min Zinc _____

_____ Fertilizer Dealer I will buy from _____

Address _____

Call your local
WARBERG'S
 MOVING & STORAGE
 agent. 733-7371

FARM Auction CALENDAR

- ### All Magic Valley Sales Listed Here
- Contact the Times-News Farm Sales department for complete advertising coverage of your farm sale, hand bills, newspaper coverage of over 70,000 readers in Magic Valley, and more billing. All at one special low rate. Every sale listed in this form calendar for 30 days before sale at no cost.
- Feb. 11**
 YOM MILLER and NEIGHBORS
 Advertisements Feb. 8 and 9
 Auctioneers: War, Eilers, Wall and Messersmith
- Feb. 11**
 ELMER YOUNG
 Advertisements Feb. 8 and 9
 Auctioneers: Great Western Auction Service
- Feb. 13**
 DAN NIEFFENEGGER
 Advertisements Feb. 10 and 11
 Auctioneers: Lyle Masters and Harold Klaus
- Feb. 14**
 IRVING TURDY
 Advertisements Feb. 12 & 13
 Auctioneers: Lyle Masters
- Feb. 14**
 ARNOLD ULM MOILER ESTATE, Rupert
 Advertisements Feb. 12 and 13
 Auctioneers: War, Eilers, Wall and Messersmith
- Feb. 15**
 BILL VANDOVER and GEORGE CROFFS
 Advertisements Feb. 12 and 13
 Auctioneers: Gayfield Phillips and Orvil Sears
- Feb. 15**
 EMMETT S. BAUER
 Advertisements Feb. 13 and 14
 Auctioneers: War, Eilers, Wall and Messersmith
- Feb. 16**
 MRS. GALE BURBANKS
 Advertisements Feb. 14 and 15
 Auctioneers: War, Eilers, Wall and Messersmith
- Feb. 16**
 GEORGE YOUNG ESTATE
 Advertisements Feb. 13 and 14
 Auctioneers: Great Western Auction Service
- Feb. 17**
 MRS. H. A. CHILDERS and NEIGHBORS
 Advertisements Feb. 15 and 16
 Auctioneers: War, Eilers, Wall and Messersmith
- Feb. 18**
 U.S. CAFE, GOODING
 Advertisements Feb. 16 and 17
 Auctioneers: War, Eilers, Wall and Messersmith
- Feb. 20**
 PHIL BUSHMANN
 Advertisements Feb. 17 and 18
 Auctioneers: Lyle Masters
- Feb. 21**
 DELBERT CLAMPTT
 Advertisements Feb. 17, 18 and 19
 Auctioneers: War, Eilers, Wall and Messersmith
- Feb. 21**
 JOHN W. LALUS
 Advertisements Feb. 17 and 18
 Auctioneers: Robert Alexander
- Feb. 20**
 A. F. GLAUNER
 Advertisements Feb. 17 and 18
 Auctioneers: John Balmbaugh

C. Graybeal Named Dairy Unit Leader

Calvin Graybeal, Castleford, was re-elected president of the Twin Falls County Dairy Herd Improvement Association, at the annual meeting recently at Buhl. Warren Hart, Buhl, was re-elected secretary-treasurer; Alvan Flegler, Castleford, was elected as director for a three-year term. Everett Andrews, Filer, was selected to serve two years of the unexpired term of Lyman Engle, Filer, who has resigned. Dale Williams, Filer, is the vice president of the association, and hold-over director.

About 25 members of the association heard Virginia Kennedy, extension farm management specialist, and George Cleveland, extension dairyman, discuss dairy management problems. The members also heard reports from Testing Supervisors Thomas Bergstrom and Mrs. Warren Hart.

T.V. Club Is Organized By Area 4-H'ers

GOODING — Information explaining the new 4-H TV Action Club and enrollment materials are being distributed to all fourth, fifth and sixth grade children in Gooding County according to Dale Walton, county extension agent.

The Action Club features a series of ten 30-minute television programs designed to teach basic emergency preparedness principles, Mr. Walton said. The series will be on KMYT, Channel 11, Twin Falls at 10:30 a.m. each Saturday.

The programs will be 4-H'ers are encouraged to have their children enroll in this educational program as soon as possible. Additional information may be obtained by contacting the County Extension Office, 405 Main, Gooding, telephone 934-4401. Enrollment materials will be forwarded on request.

Members can enroll directly by sending a postcard including name, address, age and county to the Twin Falls County Agent's Office, 534 Addition Ave., Twin Falls.

Those enrolling will receive by return mail the 4-H Action Manual, which is designed to assist them in carrying out the projects explained on the television each week.

Dick Arnold is the Action Club leader. With the help of the studio 4-H Club members, during each program he will appear on the television screen and give a preview of the club project. He will also explain projects which each 4-H'er can do in his own home and how they can prepare their homes and family for emergencies.

Each show will feature a visit to an interesting place or a trip to a scenic spot. In the event of a fire, flood or radiation emergencies, Mr. Walton said.

Two Pots For Plants Give More Growth

For steady, stable plant growth, try "double-potting" in your indoor gardens and window boxes.

This means placing your clay-potted plant into an outer container at least one or two inches larger in diameter. The area around and above the clay pot is filled with moist planting mix — peat moss or sphagnum.

The soil of the plant in its clay pot should be well-watered at "double-potting" time, and then never watered again. Instead, apply water only to the material surrounding the outside of the pot, whenever moisture is needed.

This method can only be used with plants in clay pots, since their porous walls allow necessary moisture to enter and feed plant roots. Non-porous, substitute containers allow no such interaction.

"Double-potting" provides an automatic watering system for excellent plant growth and insures against excessive moisture so harmful to plant roots.

For when a plant is over-watered, the water fills the air spaces in the soil, and chokes off oxygen, roots must have to breathe. Overwatering slows down root activity resulting in plant fatalities.

Plants may need additional water fairly often during their first few weeks. However, after they have adjusted to their new environment, water can be applied less frequently, without permitting plants to wilt severely.

Double-potting is practical, too, when plants are to be set in an indoor planter box or



DISCUSSING their soon-to-be new home, Mareeba, Australia, are Mr. and Mrs. E. G. Miller, Kimberly. The Millers leave Magic Valley March 1 for a one to five-year stay in the continent "down under" and his new job as agricultural advisor to Australian bean farmers. (Times-News photo)

Adventurous Kimberly Couple Prepares For One To Five-Year Australia Stay

The whole thing started with a pen pal and led to the cleaner wool shipped out of Australia is that wool is baled rather than bagged in most operations over there, he added.

Every livestock farm has a shearing bin, Mr. Miller continued, and a great deal of care is given to shearing. Wool grown in Australia is used primarily in wearing apparel and other goods requiring a fine grade of wool, rather than in rugs and similar items.

In Australia, as in the Western United States, each small town has a sale ring, but where in the United States cattle would occupy the ring, in Australia sheep are the primary concern. Short-horns are the basic breed in Australia and Merino are the basic sheep, Mr. Miller noted. Dairy herds also are commonplace in the country.

Bean Meeting Set Feb. 16 In Twin Falls

A comprehensive program concerning the bean industry will be presented at a Bean Production Meeting at 1:30 p.m. Feb. 16 at the Idaho Power auditorium.

Robert Moore, Kimberly, is the meeting chairman and member of the Bean Advisory Committee along with Marshall Tebaron, Kimberly; Robert Mohendauer, R. W. Pierce, and Hugo Meyer, all Filer, and Leslie Dean, J. P. Smith and Don Arrington, all Twin Falls.

The program will include Donald Youtz, extension agricultural agent, speaking on "Insect Problems at 1:30 p.m., Dr. Leslie Dean, University of Idaho, Review of Diseases, 1:45 p.m., and Clyde Butcher, State Department of Agriculture, What is the Halo Blight Situation, 2 p.m.

John Brown, Agricultural Research Service, Kimberly, Report on Zinc Research, 2:15; Olan Genn, extension agricultural agent, Fertilizer Possibilities, 2:30 p.m.; Mr. Tebaron, Irrigation and Bedding of Beans, 2:40 p.m.; and R. W. Pierce, Personal Experiences in Using Treolan for Weed Control, 3 p.m.

At 5:15 p.m. a discussion on weed control will be presented by panel members Mr. Pierce, Robert Breeding, Don Arrington, Don Silvers and Wallace Peterson, Boleas.

All persons interested in the bean industry are invited to attend.

Cliff Amick Goes To New Position

BOISE — Cliff Amick, former Twin Falls resident, has moved to Walla Walla, Wash., to assume his new duties as regional manager for Pacific Supply Co-operative.

In his new position, Mr. Amick will be responsible for an area that includes all of Eastern Washington, Northern Oregon and the Idaho Panhandle area.

Mr. Amick has been associated with Pacific since 1957 and lived in Walla Walla from 1961 through 1965 before moving to Idaho. Prior to joining Pacific Supply, he was manager of the Twin Falls Co-Op Supply in Twin Falls.

As manager for Pacific's region 3 from 1965 until now, Mr. Amick's territory included all of Southern Idaho and parts of Southeast Oregon. He has been succeeded there by Don Sump, Eugene, Ore., who has been



CLIFF AMICK who has been named regional manager for Pacific Supply Co-operative in Walla Walla, Wash. Mr. Amick was manager of the Twin Falls Co-Op Supply, Twin Falls, at one time. (Dudley photo)

Suspended Feb. 10-11, 1967
Twin Falls Times-News 13

BOISE — The U.S. Department of Agriculture has announced that there will be no proportionate shares (acreage allotments) established for sugar beet production in 1967.

They have also announced that "reasonable and fair prices" for the 1966 and 1967 crop have been determined. The minimum payment under the new established quota for the 1966 determination should raise the average of prices paid to growers about 25 cents per ton, according to a recent release made by the USDA.

The sugar beet acreage allotment program which has been in effect for several years was suspended for the 1967 crop but will be set at 90 per cent of the established quota for the 1966 crop.

Range or Feed Lot

PELLETS

We specialize in all types of range and feed lot pellets. Custom formulated to your specifications — with or without antibiotics, Molasses, etc.

TOP QUALITY... COMPETITIVE PRICES
FULL LINE OF FEEDS.
For All Your Livestock and Poultry

ALLISON FEED MILL

FILER 326-4315
LOCALLY OWNED and OPERATED

for meat, a bake shop for bread and pastries, a sportswear shop for ladies-slacks-and-sweaters and a suit shop for suits," she said.

The Millers will be living within 35 to 40 miles of Cairns, population approximately 21,500. Cairns is 2,800 miles north of Sydney, the continent's largest city.

"The couple has shipped 300 pounds of personal belongings, have sold much of their farm equipment and stock and sent one bean planter and cultivator to Australia. They will leave March 1 for their new home and will return in from one to five years. Homesick they might get," Mrs. Miller said, but they will never regret their decision to strike out for places unknown.

ATTENTION FARMERS!

Avoid the dilemma of the spring rush — get your repairs done this winter! Anticipate your needs and order your equipment now.

- ALFALFA CROWNERS
- SLED CORRUGATORS
- HEADLAND FURROW OPENERS
- BALED-HAY LOADERS
- POTATO BEDS and PILERS

Complete blacksmithing and Machine Shop facilities available.

PAUL EQUIPMENT AND WELDING

438-4272

Spray or Spread Simplot

USE THE BEST FORGET ALL THE REST

SIMPLOT FERTILIZERS

WATCH FOR OUR WEEKLY AGRICULTURAL WEATHER REPORT

Showing daily high and low temperatures, precipitation and weekly mean temperature for 1965 and current 1966.

1966				1967			
Month	Hi	Lo	Precip.	Month	Hi	Lo	Precip.
Feb. 1	37	15	.07	Feb. 1	41	29	.04
Feb. 2	36	11	0	Feb. 2	41	28	0
Feb. 3	35	13	0	Feb. 3	45	30	0
Feb. 4	34	18	0	Feb. 4	49	29	0
Feb. 5	39	24	T	Feb. 5	52	30	0
Feb. 6	46	31	.03	Feb. 6	44	29	0
Feb. 7	43	23	.02	Feb. 7	47	22	0

1966 Mean 28.9° 1967 Mean 36.8°

30 Years Average Precipitation 70" February
Average Soil Temperature at 4" as of February is 34°

If the Grass Is Greener across the fence, he's most likely using Simplot Fertilizers.

This information brought to you by your—

SIMPLOT SOILBUILDERS

Burley - Rupert - Jerome - Hazelton - Twin Falls

Deepwell Turbine PUMPS SALES & SERVICE

We Service All Makes of Irrigation Pumps

Layne PUMPS, INC.

2 miles East on U.S. 30 (Kimberly Road)
733-3284 — TWIN FALLS — 733-6914

What Puts "The Green" In Alfalfa

You can make money growing alfalfa if you get heavy yields. Phosphate is the plant food alfalfa needs most in the Western U.S.

Simplot Triple Superphosphate Fertilizer increases yields and improves quality for a more palatable livestock feed. You can get \$3 to \$5 in extra yield for every dollar you invest in Simplot Triple.

Fertilize your alfalfa now... your nearby Simplot dealer is waiting to serve you.

FARMING PAYS WITH SIMPLOT Fertilizers

J.R. Simplot

FOCATELLO, IDAHO

Janyo PUMPS

For all purposes Sales - Service - Installation

PUMP & EQUIP. CO.

127 So. Park 733-7581

Harold Hackworth, our sales & service man, will be sure to see you WITH THE BEST PRICES IN THE VALLEY

MAGEL TIRE CO.

JUST PHONE 733-8761

GOOD YEAR MAGEL
Tire Service, Twin Falls

Test Reports Told On Area Dairy Herds

Dairy cows on production testing in Unit 2 of the Twin Falls County Dairy Herd Improvement Association during January averaged 35 pounds of butterfat per cow and 935 pounds of milk, reports County Agent Donald Youz.

Production figures include all cows on test in the unit, including dry cows. The report of Testing Supervisor Thomas Bergstrom showed that 1090 cows were on test, with 1090 in production, and 242 dry cows.

In the large herds of over 50 cows, Irvin Ehlers had the high production average of 50 pounds of butterfat, 1368 pounds of milk, with 62 cows milking of a total of 70.

On high producing herds with butterfat, milk, total cows, and number in production are: Alvin & Stan Smutny, 45, 1281, 73; and 1187; 73; Richmond, 45, 1281, 73; 42, 1258, 78; and 84; Walter Matthiesen, 37, 736, 111 and 94; Russell Riggs, Murtaugh, 37, 948, 30 and 42; Lawrence Kathjosek, 37, 1048, 52 and 39; and Clyde Wright, Filer, 35, 955, 61 and 47.

In the medium size herds of 25-50 cows, Blair Hall topped the list with 43, 1182, 44 and 28; and next in line is Dale Williams-Filer, 40, 1166, 45 and 28; Everett Andrews, Filer, 42, 1095, 35 and 35; Harvey Grindstaff, Buhl, 41, 1116, 45 and 41; Gene Randall, Kimberly, 40, 1151, 33 and 33; Gaylord Brown, Filer, 39, 1020, 32 and 27; and Roger Stafford, Kimberly, 37, 1040, 48 and 39.

In the small size herds, under 25 cows, Al Bolsh, Hansen, was high with 49, 1045, 15 and 14; Mike Holloway 45, 1436, 4 and 4; Gary Custer 40, 1225, 18 and 17; and E. W. Hall, Filer, 39, 977, 15 and 13.

Fertilizer Plant Built At Rupert

MINIDOKA—Construction of a new fertilizer plant is underway and officials expect to be in operation in time for spring farm work.

Operating the new business on the Minidoka Highway, one-fourth mile south of the village, will be William Morgan, Shillington, Rupert, and Gerald (Jerry) Morgan, Minidoka.

Warren King, Minidoka, will manage the new Morgan-Shillington Fertilizer Co.

Liquid fertilizer, ammonia and dry fertilizer in bulk will be available, according to King, with Minidoka, Minidoka, in charge of custom application service, and Darrell Hatch, Rupert, manager of Morgan-Shillington, offering a complete aerial service.

Buildings under construction include a 20-foot by 30-foot office building and weighing, loading and storage facilities for 600 tons of bulk fertilizer.

Larry Wright's Construction Co., Rupert, is sub-contractor for the site. Cascade Co., designer of the new pre-fab structures.

Manufacturers supplying the company will be Chevron Industrial Co., Collier, Carbon and Chemical Co., and Phillips Phillips Petroleum.

Morgan and Shillington have been associated with the fertilizer business for the past 15 years, and King has been handling, applying and selling Petroleum.

2 Directors Named For Buhl Firm

BUHL — Fred Koch and Tom Haglmanek, both Buhl, have been re-elected to the board of directors of the Buhl Cooperative Supply, Ben Koch, manager, reports.

At the 23rd annual meeting of the firm held in the Buhl American Legion Hall, Mr. Koch was elected president, with Dick Atkins named vice president and Melvin Jagels, secretary. Hold-over directors are L. R. Schaefer, Filer, and Mr. Atkins and Mr. Jagels, both Buhl.

The audit report was given by Jim Cavanaugh, Boise. Total volume for the year was reported as \$407,071, showing a net margin of 8.50 per cent.

Some 300 members attended the annual meeting with lunch eaten served by the Catholic Women.

DID YOU KNOW!

The Kimberly Janitorial Service is now two years old! From the beginning with exactly one customer (with us) we have grown to where our cleaning operations range from "ultra plush" executive offices to banks and from business and professional offices to super markets. All due mainly to our excellent customer recommending us to their friends. For the best in a janitorial service — Bill!

The Kimberly Janitorial (You'll be glad you did)

Bill Ivie, owner, Days 423-8191
Ralph Hansen, Mgr. Nites 423-5345

Presenting Discussion on Weed Control at the Wood River Soil and Water Conservation District Meeting at 10 a.m. Wednesday, Feb. 15 in the Lincoln County Courthouse in Shoshone will be Kathy Ross, Shoshone 4-H club member. Oscar Kerner, member of the group's program committee, shows a poster of 4-H activities in the county.

Hay, Pasture Management Program Set At Shoshone

SHOSHONE—The annual hay and pasture management program for the Wood River Soil and Water Conservation District will be held at 10 a.m. Feb. 15 at the Lincoln County Courthouse here.

Charles Howard, plant material specialist at the Soil Conservation Service Plant Materials Center, Aberdeen, will discuss varieties best suited to many uses. His message will assist farmers to get peak production using the best varieties under the best possible management.

Richard Blincoe, rancher at Kimama and Wood River soil district cooperators, will discuss his method of harvesting, preparing and feeding the hay and pasture forage, grains and storing and feeding.

Kathy Ross, local high school student and active in 4-H club will discuss weed control and the things weeds do to rob farmers of the best production.

Chris Mabbutt, Shoshone high school student body president and member of the local Future Farmers of America Chapter, will discuss carbon dioxide and oxygen cycles in plants in photosynthesis and plant growth.

Paul Jacobsen, local veterinarian, will talk on livestock diseases on pastures and ranges and in the feedlot.

Corwin Silva, member of the district Board of Supervisors, will serve as master of ceremonies.

Spud Figures Broken Down Over Nation

BOISE — The report of the USDA stocks of potatoes on hand Jan. 1 indicated that total stocks for the 26 fall producing states were 124,890,000 hundredweight, slightly less than a year earlier, despite a three per cent larger 1966 fall crop.

Idaho stocks as of Jan. 1, according to the Agricultural Extension Service, University of Idaho, were 15 per cent below a year earlier. Stocks in the eight Eastern fall states were 14 per cent above a year earlier, were down seven per cent in the nine Central fall states and down six per cent in the nine Western fall states.

But — the major increase — in stocks is in the eight Eastern states with the bulk production in Maine. Maine stocks on Jan. 1 at 30,500,000 hundredweight were 18 per cent above a year earlier.

Disappearance of the 1966 fall crop to Jan. 1 is also of considerable interest and was at 26,000,000 hundredweight, 16 per cent above a year earlier.

More important is disappearance in relation to total production. It should be remembered that disappearance figures not only include movement to fresh and processing markets, seed and livestock feed, but also losses through shrinkage and waste as well as that consumed for food and farm households.

As of Jan. 1, 44 per cent of the U.S. 1966 fall crop had "disappeared" as compared to 42 per cent a year earlier.

Idaho stocks of fall potatoes on Jan. 1 were 15 per cent below a year earlier despite an eight per cent larger estimated crop.

Despite larger disappearance from last year, total processing of potatoes in Idaho during the July 1-Oct. 31, 1966, period has been below a year earlier.

Total processing through Oct. 31 was 7,408,000 hundredweight, down 16 per cent from a year earlier.

Public Lands Tour Slated In September

WASHINGTON — The Public Land Law Review Commission has set Sept. 3 and 4 as dates for a field tour of public lands in Idaho. Sen. Jordan announced this week.

Jordan, a member of the commission, had asked the group to come to Idaho to become acquainted with special public land policy and administration problems. With two-thirds of the state federally-owned, the commission can get first-hand information on a variety of public land problems in a short period of time, the Idaho Senator explained.

Senator Jordan said that he would seek the advice and efforts of state, local and private resource interests in setting up the Idaho field trip itinerary.

The Idaho tour will follow a meeting in the Northwest to hear public views on Sept. 1 and 2.

What Banker Knows Sheep Like a Sheepman?

We want to keep it quiet. We're having a closet sale on Anti-Freeze, Snow Tires and discontinued Passenger Tires, Mag-Cl Valley Growers, Inc., Curry and Jerome.

KEEP 1450 KC on your radio dial WEEKDAYS

- 5:00 am SIGN ON
 - 6:00 am HOLLY HOUFBURG
 - 6:05 am JOHN KELLY
 - 9:00 am SWAP AND SHOP
 - 9:05 am THE JOE PINE SHOW
 - 9:30 am BO FRATER
 - 10:25 am SOCIAL CLUB
 - 12 noon HOLLY HOUFBURG
 - 1:05 pm JOHN KELLY
 - 4:00 pm LARRY BARWICK
 - 6:00 pm JUNEAU SHINN REPORTS
 - 6:15 pm SPOTLITE ON SPORTS
 - 6:30 am WEATHER
 - 7:30 pm THE JOE PINE SHOW
 - 7:30 pm SCHOOL HI-LITES
 - 8:00 pm PLATER PARTY
 - 9:05 am JERRY ADAMSON
 - 1:00 am SIGN OFF
- KEEP RADIO FEATURES
- Utten for Shop and Swap weekdays at 9 a.m. Items for sale, trade or giveaway. It's a free service of 1450 Radio.

CPA
Production Credit Association

THE MAN FROM PCA COUNTRY

Southern Idaho
PRODUCTION CREDIT ASSOCIATION

National Leader To Speak At NFO Meeting In Rupert

RUPERT — Erhard Pfingsten, Woodbury county, Iowa, national vice president of the National Farmer's Organization, will be the featured speaker at the annual meeting of the Minidoka County NFO on Saturday night at Minico High School.

Newly elected officers of the county group will be installed at the meeting with Dan Walton, president; Fred Hukill, vice-president; Martin Hugelheirich, secretary; Bill Kent, treasurer, and Ralph Hastings, area director.

Jack Duncan, Edward Topfiff and Kent Cole will be members of the grain commodity board; Russell Huff and Richard May, the dairy-commodity board, and William Hepworth, Larry Dessel and Elton Hassstrom, meat commodity board. Russell Merrigan is the trustee.

Roy Abo, outgoing president, has been in charge of arrangements for the chili supper and meeting Saturday.

The chili supper will be served from 7:30 to 9 p.m., with local entertainment and a speaker. Dinner tickets are \$1.

Pfingsten will discuss low farm income and its cause and effect on rural businessmen and consumers.

He was born and raised in Nebraska receiving his college education in Kansas. He began farming in 1932 in western Iowa. At the close of World War II, he bought a farm in Woodbury county, Iowa.

He farms 500 acres of diversified farming, principal products being corn, soybeans and hogs.

Pfingsten joined NFO at its beginning and has been a member continuously since that time. He was elected to the national board of directors in 1966; was appointed director of the meat commodity department in 1961; elected national vice president in 1962, and re-elected to that office in 1963, 1964 and 1965.

Insurance On Sugar Beets Is Available

WASHINGTON, D.C. — "All-risk Federal Crop Insurance for sugar beet will be available to farmers in four more Idaho counties for the first time for the 1967 crop year," Orval L. Freeman, Secretary of Agriculture announced last week.

The counties are Bingham, Cassia, Jerome and Power which will raise to eight the number of counties in Idaho eligible for sugar beet protection.

There are Federal Crop Insurance protection programs in 26 Idaho counties with wheat and barley insurance available in all; beans in eight; oats in three; peas in five, and potatoes

EMPLOYMENT NOTED WASHINGTON (AP) — The nation's total employment hit a record January high of 72 million.

USE TIMES-NEWS WANT ADS FOR FAST SELLING RESULTS

KEEP 1450 KC
on your radio dial
WEEKDAYS

- 5:00 am SIGN ON
- 6:00 am HOLLY HOUFBURG
- 6:05 am JOHN KELLY
- 9:00 am SWAP AND SHOP
- 9:05 am THE JOE PINE SHOW
- 9:30 am BO FRATER
- 10:25 am SOCIAL CLUB
- 12 noon HOLLY HOUFBURG
- 1:05 pm JOHN KELLY
- 4:00 pm LARRY BARWICK
- 6:00 pm JUNEAU SHINN REPORTS
- 6:15 pm SPOTLITE ON SPORTS
- 6:30 am WEATHER
- 7:30 pm THE JOE PINE SHOW
- 7:30 pm SCHOOL HI-LITES
- 8:00 pm PLATER PARTY
- 9:05 am JERRY ADAMSON
- 1:00 am SIGN OFF

KEEP RADIO FEATURES

Utten for Shop and Swap weekdays at 9 a.m. Items for sale, trade or giveaway. It's a free service of 1450 Radio.

What Banker Knows Sheep Like a Sheepman?

We want to keep it quiet. We're having a closet sale on Anti-Freeze, Snow Tires and discontinued Passenger Tires, Mag-Cl Valley Growers, Inc., Curry and Jerome.

CPA
Production Credit Association

THE MAN FROM PCA COUNTRY

Southern Idaho
PRODUCTION CREDIT ASSOCIATION

Farm Leader Notes Growth In Agriculture

SPOKANE, Wash. — Adequate credit plus technological advances equals improved efficiency.

This formula was used here recently by a national farm leader as a simple way to explain the "near-miracle of abundant agricultural production" performed by U.S. farmers and ranchers in recent years, a phenomenon that is the envy of the rest of the world.

According to R. B. Tooteil, Governor, Farm Credit Administration, "Availability of adequate amounts of credit on terms suited to the needs of individual farmers and ranchers, coupled with technological advancements and vast educational programs have been major factors in making possible agriculture's leap-frogging system."

In 10. More than 200,000 acres were protected by this insurance in 1966.

Governor Tooteil pointed out

that about two million farmers and ranchers have borrowed approximately \$12.5 billion from the 12 Federal land banks in their first 50 years of operation on the security of mortgages on their farms. Today, 391,000 farmers and ranchers have \$4 billion in mortgage loans outstanding from these banks.

GET A GOOD DEAL ON CAR INSURANCE.

Call me for details
VERL MECHAM
State Farm Insurance Agent
1632 ADDISON AVE. E.
733-2623

STATE FARM
Life Insurance Co.
Home Office: Bloomington, Ill. 61701

NEW ALUMINUM ALLOY HEADGATES!!

AVAILABLE IN ANY SIZE OR SHAPE CONTROL BOX NEEDED

- They are driven in your ditch
- Don't dig
- Free delivery and estimates
- You install or we will.
- Won't Rust, Rot, Heave, Burn or Freeze

CLICK PORTA PLANK SALES

717 South Lincoln Phone 324-2559 Jerome, Idaho

EARLY ORDER SPECIALS

FOR SPRING DELIVERY SATISFACTION GUARANTEED

CHAMPLIN OIL

- Non-detergent **65c** gallon
- Heavy duty detergent **80c** gallon
- 10-30 all season **\$1.00** gallon
- Series 3 diesel ... **\$1.10** gallon

Prices quoted on drum lots. No drum deposit. Also available in cases of quarts, and 5-gallon cans.

BALER TWINE

\$6.50 (BALE IN 20 BALE LOTS)
(\$6.65 single)

CF & I BALER WIRE

\$10.20 (BOX IN 20-BOX LOTS)
(\$10.35 single)

These prices good for limited time only. 25% deposit on all orders.

FARM CITY

DISTRIBUTING CO.

733 Main Ave. E. PHONE 733-5241
Twin Falls

FREE PARKING FREE COFFEE

Curtains

ACROSS

- Upper parts of some curtains
- curtain
- Feminine application
- Jason's ship
- Birth
- Story of heroic
- Alto (Gloria)
- Blitz vetch
- Apple food
- Austrian
- James' home
- Civil War
- Before this
- Refuse
- Bruger
- Biological name
- Sharp bayot
- Play division
- Frying snout

DOWN

- Front of an army
- Constellation
- Opportunity
- Marcellus
- Nickname
- At no time
- Keated (dial)
- Moslem title
- Sharp bayot
- Soviet news agency
- Angry
- Kind of moth
- Believe
- Troop
- Kind of drops
- Capital of Peru
- Sumerian
- Long for
- Mongolian
- Lessened
- Founder of "Keystone Kops"
- Sign of authority
- Philby
- Swift-footed
- Feeling (verb)
- Contradict
- Sharpness
- Donkey (comb. form)
- Interise
- Extensive (comb. form)
- Long for
- Mongolian
- Lessened
- Founder of "Keystone Kops"
- Sign of authority
- Philby
- Swift-footed
- Feeling (verb)
- Contradict

Answer to Previous Puzzle

Tizzy

"I think the world was in just as bad shape when you and mother were young, only it didn't get so much publicity!"

BRIDGE BY JACOBY

The Blackwood convention is can bid four no-trump. North so valuable that many players will show one ace and South believe you just can't bid six. He can or can't make a slam. If he does bid six and West opens a diamond, as it most likely the defense will take the first two tricks. If he bids only five and it turns out that North holds a singleton diamond South will learn that he has misread a slam. South can save himself all this trouble if he leaves Blackwood entirely alone and bids four clubs over three spades. North will probably bid four hearts to show good hearts and South can jump to five spades to say to partner, "We have no losers in spade, hearts or clubs, but I have two diamond losers. What can you do about that suit?" North won't be able to do anything about diamonds and will pass.

The defense will take two diamond tricks and North and South will be happy.

CARD SENSE

Q—The bidding has been:

West	North	East	South
Pass	2♠	Pass	3♥
Pass	3♥	Pass	4♠
Pass	4♠	Pass	4N.T.
Pass	5♣	Pass	?

You, South, hold:

AK2 ♠ AKQ10985 ♠ AQ4 ♣

What do you do now?

A—Bid seven hearts. It is just about a certainty that your partner's ace is in spades and you are willing to gamble that you will be able to handle your seven and six of clubs.

TODAY'S QUESTION

Instead of responding two spades, your partner jumps to three no-trump over your two hearts. What do you do now?

Answer Next Issue

Eugé Bunny

GET THAT DECK OUT OF THERE—IT'S BLOCKIN' THE BIRDAWALK!

IT WILL ONLY BE A MOMENT, OFFICER—MY COLLEAGUE IS INDIGNE! DO SOMETHING ABOUT NOW, UNDERSTAND?

WHAT'S GOIN' ON HERE?

CONTAIN YOUR IRE—MY QUICK THINKING SAVED US FROM BEING ARRESTED!

Side Glances

"My psychiatrist cured me of being a compulsive talker. Now I just talk for the fun of it!"

Carnival

"I understand the Smith wedding was quite an affair... biggest thing the credit managers in this town have ever seen!"

Major Hoople

WELL, MAJOR, I WAS SUSPICIOUS OF WILBER, BUT I KNEW HE'D NEVER MAKE A MOVE WHILE I WAS AROUND! SO I CLEARED OUT AND PERSUADED THE DETECTIVE TO MOVE IN! WILBER MUST HAVE SENSED IT—HE FRAMED RANDOLPH IN A CARD GAME TO GET RID OF HIM, THEN MOVED FAST BEFORE I CALLED! WHEN YOU MENTIONED THAT HE ALWAYS CALLED SEVERLY "ICE" I KNEW HE WAS A HOOD!

GREAT CREAM!

WILBER'S ONE MISTAKE!

Out Our Way

SIT DOWN—I'LL BE WITH YOU IN A FEW MINUTES!

THOSE FEW MINUTES WILL BE HOURS TO THAT NEW KID! SOMEBODY SHOULD TIPPED HIM OFF THAT INSTEAD OF BEING FIRED HE'S GOING TO BE TOLD ABOUT THE GREAT ADVANTAGE OF BEING FIRED WHO DON'T GO TO SLEEP ON THE JOB!

THE BULL IS WASTING HIS TIME! WITH THESE YOUNG FELLERS WHO GALLAVANT AROUND EVERY NIGHT, THE JOB OF STAYING AWAKE IS HARDER THAN THE JOB THEY'RE HIRED TO DO!

THE LOST CAUSE

ARE YOU REALLY A FULL-BLOODED MEXICAN, MIGUELITO?

WELL, NOT QUITE FOOL—I GAVE A PINT TO THE BLOODMORBLE THEM'S MORNEING.

THAT'S ALL THIS TOWN NEEDS... A MEXICAN RED SKELTON.

L.P. Abner

SURPRISE!—MY BELOVED LITTLE SON, WHAT'S HIS NAME, HAS A PROTEST SONG FOR US?

WHAT'S THE TITLE OF IT, MAN?

"MAH COUNTRY 'TIS OF THEE?"

SNAPPY IT?

IT COULD CATCH ON!

Captain Easy

NOW I'VE RUN FOR A BOARD OF DIRECTORS' MEETING! STOCKHOLDERS WILL BE TOLD THE RESULTS OF OUR BOARD REPORT!

MISS WALKER! TRUD NOW! MY EYES OF MR. HOGGER, RUN!

HED INVESTED A FORTUNE IN THOSE STOCKS—AND NOW THEY'RE RUIN!

TOKTOK I CAN'T BEAR TO SEE OUR STOCKS. LOOK! I'LL TAKE HIS STOCK OFF HIS HANDS...

GARGT OFFERS TO BUY YOUR STOCK AT CLOSING PRICES—BUT YOUR MARKET IS BUT IT WOULDNT SELL! WELLSHEEE!

NO! WOULDNT THAT SHAME THAT SHAME! UNLESS HE KNOWS HE'LL KILLING!

Rex Morgan, M.D.

YOU NEGLECTED TO SEARCH OUR BASEMENT LIGHTWANT! WE'D BE MOST HAPPY TO SHOW YOU THROUGH IT!

NO THANKS—BUT DON'T EITHER OF YOU LEAVE TOWN! MR. ARROW, WE'VE BEEN FRIENDS A LONG TIME, CLIVE! EVER SINCE FOURTH GRADE!

NOW DO YOU BELIEVE ME, RUSSELL? DID I NOT TELL YOU THAT POLICE ARE STILL BUNKING FOOLST?

YOU GOT RID OF THE ACID?

HARDLY! I HAVE IT BURIED IN A JAR... IN THE GREENHOUSE!

THEY'VE NEVER THINK TO LOOK THERE!

Gasoline Alley

YOU'RE NOT MAD AT ME, CLIVE, YOU'VE MADE UP WITH BARRY?

I DON'T THINK BARRY WAS MY TUBE, SLIM!

WE'VE BEEN FRIENDS A LONG TIME, CLIVE! EVER SINCE FOURTH GRADE!

REMEMBER MY FIRST DANCE? I WENT WITH THAT FOOTBALL PLAYER!

AND YOU GOT HOME?

ON THE HANDLEBARS OF YOUR BICYCLE! YOU WERE SO SWEET!

Rip Kirby

WHOEVER STOLE THE CROWN LIFTED IT WITH THIS RIBBON.

YES, INSPECTOR, THERE ARE HOLES IN THE END, SOMETHING WAS FASTENED THERE...

THE CATCH WAS LOOSEENED FROM INSIDE. COULD IT HAVE BEEN GUEST AT THE BALL?

TUTU! HAVE YOU SEEN THE NEWSPAPER? THE CROWN WAS STOLEN LAST NIGHT!

REALLY ADUMPT! HOW EXCITING...

Short Ribs

WHO WANTS TO SEE ME?

SOMEONE FROM THE S.P.C.M.

THE S.P.C.M.?

NEAH.

THE SOCIETY FOR THE PREVENTION OF CRUELTY TO MEN!

Alley Oop

LOOK, PELLAS! A CRITTER OVER THERE'S GOT SUMB'N TIED!

LET'S GO SEE WHAT IT IS!

HEY! IT'S A BUNCH OF GUY!

NOBODY'S EVER SAW REFORE!

MUST BE A BUNCH OF BENEVOLENT ALIENS!

AWRIGHT YOU GOONS, COME DOWN OUTA THERE!

ANY KEEP-YER HANDS UP!

Stove Roper

YOU SAY SOMEBODY HAS BEEN WRITING THREATS TO MY CHIEF? SHE WANTS TO SCARE YOU OUT SO SHE CAN GET YOUR JOB!

THAT'S CRAZY MKE! ROSELLE ROGERS IS A WRITER! SHE HAS NO ABILITY TO BE AN ERROR!

AND THESE WARNINGS CAME BEFORE SHE LANDED IN TOWN... A MARKED CALENDAR—A NOTE LEFT UNDER THE HOOD OF MY CAR—COULD SLIPPED INTO MY...

WIKER! THERE WERE TWO NOTES WHEN I PUT THEM HERE! NOW THERE ARE THREE.

Whitrop

ARE YOU REALLY A FULL-BLOODED MEXICAN, MIGUELITO?

WELL, NOT QUITE FOOL—I GAVE A PINT TO THE BLOODMORBLE THEM'S MORNEING.

THAT'S ALL THIS TOWN NEEDS... A MEXICAN RED SKELTON.

Three Share Lead After One Round Of Phoenix Open

By STEVE BASSETT
Associated Press Sports Writer

PHOENIX, Ariz. (AP) — Dean Refram, Ken Still and Jack Ruled tied for the first-round lead in the \$70,000 Phoenix Open Golf Tournament Thursday, each with a five-under-par 66. Refram, 39-year-old tour regular from Boca Raton, Fla., lost a chance to hold the lead

Idaho Hires One Coach, Another Quits

BOISE (AP) — The University of Idaho Board of Regents accepted Thursday the resignation of football line coach Walt Anderson, and approved the hiring of a new, freshman football coach.

Anderson is resigning to continue work on his doctor's orders at a university in California. Director Paul Osty told the regents. A replacement is expected to be named by next Tuesday.

The new freshman coach is Norm Thomas, 35, who served as a graduate assistant under Head Coach Steve Musseau during the past season. A graduate of Ricks College, Thomas began his coaching career at South Fremont High School in St. Anthony, then spent eight years as head football, basketball and baseball coach at Shelley. His football record there was 39-18, including a 9-0 season in 1965.

Thomas' duties also will include recruiting in Southeastern Idaho.

Bobsled Race Is Canceled After Mishap

ALPE D'HUEZ, France (AP) — The 1967 world four-man bobsledding championships, scheduled this weekend, were canceled Thursday because of dangerous conditions on the track.

The action came after two bobslers were injured in Wednesday's two-man championships. The course was closed because of unsafe conditions during a practice run Thursday and team members from seven nations were in near revolt.

Cancellation "was the only thing left to do after most of the bobslers of the seven countries entered in the event claimed they were against racing on a track they judged unsafe," said Gene Jacob, a French member of the organizing committee.

The decision means that the controversial Col du Tournaï ice course will have to be rebuilt entirely for next year's winter Olympic Games, Jacob said.

Avery Brundage of Chicago, president of the International Olympic Committee, made a quick trip to the winter resort from nearby Grenoble, and said changes would have to be made in the course before the 1968 Games.

"I am not going as far as to say that it was a mistake to select this site for the Bob race because the Alpe d'Huez is too sunny," Brundage said.

"There are difficulties in all new things. I understand the track will be redone in part and shaded more properly from the sun to assure a uniform ice coat."

Maris Signs \$72,000 Pact With Cards

ST. LOUIS (AP) — Roger Maris, who hit 61 home runs for the New York Yankees in 1961, has signed his 1967 contract with the St. Louis Cardinals for a reported \$72,000. General Manager Stan Musial announced Thursday.

Maris came to the Cardinals in a winter deal with the Cardinals that sent Cardinal third baseman Charley Smith to New York. Maris said when the deal was announced that he was contemplating retirement from baseball.

Musial's announcement made Maris' decision to play with the Cardinals this season official. It had been reported for several days that Maris would sign the contract with the Cardinals.

The slugging right fielder signed for the same figure he played for last year with New York when, hampered by injuries, he hit 233 in 119 games, much of the time as a pinch-hitter.

Maris, 32, has been plagued with injuries. He underwent surgery during the winter of 1965 for a bone chip that was pinching a nerve in his right hand, handicapping his swing. In the 1965 season, he hit 239 and played in only 46 games because of hand injuries.

Then last May, he crashed into Detroit catcher Bill Freehan during a game and hurt a knee.

Maris, although at times admittedly at odds with the press, has had his moments. He was the American League's Most Valuable Player in 1960, and again in 1961 when he hit those 61 home runs that broke Babe Ruth's record of 60 homers in one season.

North Carolina Ekes Out Win

CHAPEL HILL, N.C. (AP) — Bob Lewis scored six points in an overtime period Thursday night as nationally second-ranked North Carolina captured an Atlantic Coast Conference basketball victory from Wake Forest 75-73.

With the score tied at 67 with five seconds remaining in the regulation contest, the Deacons' Newton Scott missed from the foul line, throwing the game into overtime.

Lewis sparked the Tar Heels in the extra period, matching Wake Forest's point output.

The Deacons were crippled when four players fouled out in the regulation play. Leading by as much as seven points in the first half, Wake Forest could only take a 57-59 lead at the intermission.

North Carolina took a slight lead in the second half and appeared to have the victory until the final minute.

Cage Slate

- Friday**
- Dubu at Jerome
 - Piper at Mountain Home
 - Idaho Falls at Blaine
 - Shelby at Burienville
 - Wendell at Elgin Ferry
 - Blaine at Minidoka
 - Dakota at Hart River
 - Prato at Blaine
 - Grand View at Cassia County
 - View at Blaine
 - Idaho Falls at Hagerman
 - Idaho Falls at Idaho
- Saturday**
- Twin Falls at Hazelton
 - Jerome at Pilo
 - Idaho Falls at Burienville
 - Blaine at Wood River
 - Elgin Ferry at Wendell
 - Cassia County at Hagerman
 - Idaho Falls at Grand View

RICHARD SIGNS — The Washington Senators announced Thursday the signing of their leading pitcher, Pete Richard, who received a raise over his 1966 salary.

SPORTS

"Super" Strikes Again



Astros Field Best Defense In History

HOUSTON, Tex. (AP) — The Houston Astros launched the major league's spring training season Friday and Manager Grady Hatton said he will field the strongest defensive team in the club's history.

"I definitely feel we have the best defense we've ever had," Hatton said Thursday as 23 pitchers and nine catchers began reporting at Houston's \$1-million Florida camp. Sixteen infielders and eight outfielders report Feb. 20.

"I'm also very optimistic about our pitching," Hatton said, adding that three other major league clubs have contacted Houston about possible trades.

"Two clubs want relief pitchers and one club wants a starter," he said. "But we're in no hurry. Something might develop if the deal is right for us but we are not rushing into anything."

Hatton didn't elaborate.

Hatton said he will do more than a normal amount of lineup juggling once the intra-squad and exhibition games begin.

"There will be a battle for five positions—left and center field, third base, first base and catcher—and we'll have more

Gun Class

Twin Falls area women are invited to enroll in a gun safety course that will be sponsored over the next five weeks by the Twin Falls Rifle and Pistol Club.

The classes, which will begin at 8 p.m. each Monday, will familiarize women with the handling, care and safety factors of both rifles and pistols. The course will begin with basic introduction of bullets and shells and proceed through some actual firing in the latter stages.

Those attending may bring rifles or pistols but some firearms will be available.

The club facility is located on Washington Street North at the canyon.

Intermountain Ski Races Set

POCATELLO (AP) — Many of the top veteran racers in the area are expected to compete at Skyline Sunday when the Pocatello Ski Association hosts the annual Intermountain Slalom Championships for men and women, race chairman Doug Collins announced Thursday.

competition than ever before," he said. "You'll see a lot of faces."

Bob Aspromonte, the regular third baseman since Houston entered the National League in 1962, faces a challenge from Eddie Matthews, St. Louis veteran the Astros got last month in a five-player trade with the Atlanta Braves.

"But we'll start using Matthews primarily at first base because we know what he can do at third," Hatton said. "He'll work with Chuck Harrison at first base because Chuck seems to get off to late starts."

Surgery Required On Terrell's Eye As Result Of Title Match

PHILADELPHIA (AP) — Boxer Ernie Terrell was operated on Thursday for an eye injury he suffered in his heavyweight championship fight with Cassius Clay and doctors said "there is every hope for a complete recovery. The operation went well and the defect was corrected," said the head of the surgical team, Dr. Harold G. Scheie, after the one-and-one-half-hour operation at the University of Pennsylvania Hospital.

Dr. Scheie, chief of ophthalmology at the hospital, said the injury—which he described as a "blowout" in the bony structure beneath Terrell's left eyeball—caused double vision.

The defect was much larger than anticipated, said Dr. Scheie.

"While X-rays had indicated a quarter-inch area, surgery revealed a three-quarter-inch defect," said Dr. Scheie.

Terrell is expected to remain in the hospital at least 10 days, said the surgeon.

The 6-foot-6 Terrell claimed after the 15-round bout in the Astrodom at Houston, Tex., that Clay stuck a thumb in the eye in the third round and later aggravated the injury by clamping a headlock and rubbing the eye on the ring ropes. Terrell, who lost the decision to Clay while absorbing a savage beating, maintains he saw a number of images of Clay after the third-round eye injury. He said he could hit the heavy-

weight champion only by feeling for him with one hand while letting loose with the other.

Dr. Harold G. Scheie, chairman of the department of ophthalmology at the University of Pennsylvania Hospital, said X-ray diagnosis of Terrell's injury disclosed a "blowout fracture in the bony structure beneath the fighter's left eyeball."

The double vision, Scheie said, would have occurred simultaneously with the injury.

The probable cause, the surgeon said, was a sharp, frontal impact that would cause double vision from the time it was incurred.

The doctor's diagnosis and description of the cause prompted Terrell's manager, George Hamid, to say, "There was no way a 12-inch fist supplied this type of impact to a one-inch eyeball."

Hamid, who brought Terrell to the hospital for the examination, thus reiterated the post-fight claim of his fighter and his handlers that Terrell was foul-

ed into submission.

Terrell, who said he experienced double and triple vision after the third round, also suffered a less serious condition of a moderate swelling in the retina of the left eye, the surgeon reported. The fighter will remain in the hospital a week to 10 days to recuperate.

Scheie told Hamid that the prospects are for a full recovery, and barring unforeseen complications Terrell will be able to resume his boxing career.

It is a pity if you haven't experienced the great change of pace in taste that's brewed into every bottle of Lucky Lager Bock Beer. It's darker in color... distinctive in flavor. It's brewed by us only at this time of year. And so there's a limited supply now at your favorite tavern or store.

Pity.

BOCK BEER **LUCKY LAGER**

GENERAL BREWING CORP., SAN FRANCISCO, CALIFORNIA • VANCOUVER, WASHINGTON • SALT LAKE CITY, UTAH

CUPID'S CHOICES FOR YOUR VALENTINE

RARE OLD BRIAR - EXPERT CRAFTSMANSHIP

BEST BRITISH BRIAR

COME IN AND SEE THIS RARE OLD PIPE IN A LARGE VARIETY OF SHAPES AND SIZES

MADE IN LONDON, ENGLAND

Sweet Smoking from the First Puff

English Pipes - Belgian Pipes - Water Pipes
Pipes made in France - Canebaos Pipes
Meerschaum Pipes

ALL SHAPES AND SIZES

- TOBACCO POUCHES
- PIPE LIGHTERS
- TOBACCO JARS
- PIPE TOOLS
- 75 DIFFERENT PIPE TOBACCO

Get Don, Brother, Husband, Sweetheart a pipe for Valentine's Day! Complete line fresh, moist cigars—including "Big," "Giant," Cigars for new partners.

Take Charge... Move up to CHRYSLER '67

We have 5 different Chrysler series this year. All full-size. All full-value. Take our 4 Chrysler Newports. They're priced just a few dollars a month more than the most popular smaller cars. That includes power steering, power brakes, an automatic transmission, a radio, heater and all the essential safety features. It also includes one of the biggest V-8 engines made that runs on regular gas. The biggest brakes in the medium-price field. And the only torsion-bar suspension system available in Chrysler's price class. The '67 Chryslers are taking charge. See them at our place.

Take Charge... Move up to CHRYSLER '67

BOB REESE MOTOR CO.

500 Block, Second Ave. South Twin Falls, Idaho

LEE'S SERVICE
423-5200 HANSEN
Leo... Ed or Gary

Don's Cigar Store
221 Main Ave. East Twin Falls

Twin Falls And Valley Nab Opening-Round Leads For District Mat Tournament

Twin Falls and Valley jumped into early leads in the first session of the combined Class A and B district wrestling tournament Thursday night but the favored Minico Spartans and Declo Hornets maintained their positions for the time when quantity gives way to quality. Twin Falls, getting four victories in unexpected quarters, surprised by piling up 33 points and keeping 11 men in contention.

Opening Set

The Twin Falls Mat Club will begin its 1967 season, weather permitting, this weekend, announced Professional Clyde Thomsen.

Alcindor Is Still Top Point Maker

NEW YORK (AP) — Despite the Southern California freeze that limited him to 13 points last Saturday, UCLA's giant Lew Alcindor continues to lead the nation's major college basketball players in scoring and field goal accuracy.

The 7-foot-1 sophomore was held to his lowest point total of the year when Southern Cal put on a master college basketball game in overtime.

Alcindor, who leads in field goal accuracy with a .665 mark, averaged 27.5 points a game in scoring seven weeks this season. He has a chance to become the first player in history to lead in both scoring and field goal accuracy.

Fish Creek Still Tops For Anglers

Ice fishing at Fish Creek Reservoir remains at the peak but loss of ice has about finished the season at Roseworth Reservoir.

Roseworth also enjoyed a good month—with 80 anglers—being checked with 87 fish. The catch rate there also was two and one half fish per hour.

O'Leary Defeats Minico To Claim Freshman Title

O'Leary defeated Minico 54-48 Thursday night to claim the championship of the Robert Stuart City men's basketball tournament.

Times-News Gets City League Win

The Times-News, getting 10 points from Nick Fincher, dropped the Cove 88-41 in Twin Falls City League play Thursday night.

Baseball Meet Set In Mexico

NEW YORK (AP) — Baseball will hold its annual meetings both in major and minor leagues in Mexico City next winter.

Houston Belts Hardin-Simmons

Houston, Tex. (AP) — The Houston Astros beat Hardin-Simmons 10-4 in a baseball game against two teams.

Baseball Meet Set In Mexico

NEW YORK (AP) — Baseball will hold its annual meetings both in major and minor leagues in Mexico City next winter.

Baseball Meet Set In Mexico

NEW YORK (AP) — Baseball will hold its annual meetings both in major and minor leagues in Mexico City next winter.

Utah State Selects New Grid Coach

SALT LAKE CITY (AP) — Utah State University today hired Chuck Mills, an assistant with the Kansas City Chiefs of the American Football League as head football coach.

Tate Isn't Interested In Tech Job

MIAMI, Fla. (AP) — University of Miami football coach Charlie Tate took himself out of the running Thursday for the head coaching job at Georgia Tech.

Alcindor Is Still Top Point Maker

NEW YORK (AP) — Despite the Southern California freeze that limited him to 13 points last Saturday, UCLA's giant Lew Alcindor continues to lead the nation's major college basketball players in scoring and field goal accuracy.

The 7-foot-1 sophomore was held to his lowest point total of the year when Southern Cal put on a master college basketball game in overtime.

Alcindor, who leads in field goal accuracy with a .665 mark, averaged 27.5 points a game in scoring seven weeks this season. He has a chance to become the first player in history to lead in both scoring and field goal accuracy.

Fish Creek Still Tops For Anglers

Ice fishing at Fish Creek Reservoir remains at the peak but loss of ice has about finished the season at Roseworth Reservoir.

Roseworth also enjoyed a good month—with 80 anglers—being checked with 87 fish. The catch rate there also was two and one half fish per hour.

O'Leary Defeats Minico To Claim Freshman Title

O'Leary defeated Minico 54-48 Thursday night to claim the championship of the Robert Stuart City men's basketball tournament.

Times-News Gets City League Win

The Times-News, getting 10 points from Nick Fincher, dropped the Cove 88-41 in Twin Falls City League play Thursday night.

Baseball Meet Set In Mexico

NEW YORK (AP) — Baseball will hold its annual meetings both in major and minor leagues in Mexico City next winter.

Houston Belts Hardin-Simmons

Houston, Tex. (AP) — The Houston Astros beat Hardin-Simmons 10-4 in a baseball game against two teams.

Baseball Meet Set In Mexico

NEW YORK (AP) — Baseball will hold its annual meetings both in major and minor leagues in Mexico City next winter.

Baseball Meet Set In Mexico

NEW YORK (AP) — Baseball will hold its annual meetings both in major and minor leagues in Mexico City next winter.

Bowling

INLAND EMPIRE defeated Modern Woodmen 7-0; Beach Taverners defeated 2-1; Inland Empire defeated Modern Woodmen 7-0; Beach Taverners defeated 2-1; Inland Empire defeated Modern Woodmen 7-0; Beach Taverners defeated 2-1.

Alcindor Is Still Top Point Maker

NEW YORK (AP) — Despite the Southern California freeze that limited him to 13 points last Saturday, UCLA's giant Lew Alcindor continues to lead the nation's major college basketball players in scoring and field goal accuracy.

Fish Creek Still Tops For Anglers

Ice fishing at Fish Creek Reservoir remains at the peak but loss of ice has about finished the season at Roseworth Reservoir.

Roseworth also enjoyed a good month—with 80 anglers—being checked with 87 fish. The catch rate there also was two and one half fish per hour.

O'Leary Defeats Minico To Claim Freshman Title

O'Leary defeated Minico 54-48 Thursday night to claim the championship of the Robert Stuart City men's basketball tournament.

Times-News Gets City League Win

The Times-News, getting 10 points from Nick Fincher, dropped the Cove 88-41 in Twin Falls City League play Thursday night.

Baseball Meet Set In Mexico

NEW YORK (AP) — Baseball will hold its annual meetings both in major and minor leagues in Mexico City next winter.

Houston Belts Hardin-Simmons

Houston, Tex. (AP) — The Houston Astros beat Hardin-Simmons 10-4 in a baseball game against two teams.

Baseball Meet Set In Mexico

NEW YORK (AP) — Baseball will hold its annual meetings both in major and minor leagues in Mexico City next winter.

Baseball Meet Set In Mexico

NEW YORK (AP) — Baseball will hold its annual meetings both in major and minor leagues in Mexico City next winter.

Baseball Meet Set In Mexico

NEW YORK (AP) — Baseball will hold its annual meetings both in major and minor leagues in Mexico City next winter.

Baseball Meet Set In Mexico

NEW YORK (AP) — Baseball will hold its annual meetings both in major and minor leagues in Mexico City next winter.

Baseball Meet Set In Mexico

NEW YORK (AP) — Baseball will hold its annual meetings both in major and minor leagues in Mexico City next winter.

Baseball Meet Set In Mexico

NEW YORK (AP) — Baseball will hold its annual meetings both in major and minor leagues in Mexico City next winter.

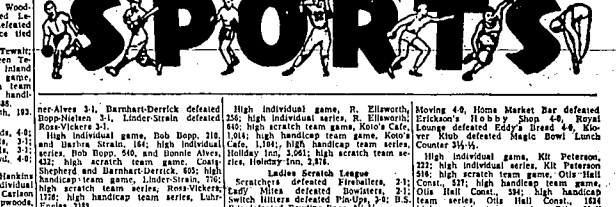
Baseball Meet Set In Mexico

NEW YORK (AP) — Baseball will hold its annual meetings both in major and minor leagues in Mexico City next winter.

Baseball Meet Set In Mexico

NEW YORK (AP) — Baseball will hold its annual meetings both in major and minor leagues in Mexico City next winter.

THE TIMES-NEWS



Alcindor Is Still Top Point Maker

NEW YORK (AP) — Despite the Southern California freeze that limited him to 13 points last Saturday, UCLA's giant Lew Alcindor continues to lead the nation's major college basketball players in scoring and field goal accuracy.

Fish Creek Still Tops For Anglers

Ice fishing at Fish Creek Reservoir remains at the peak but loss of ice has about finished the season at Roseworth Reservoir.

Roseworth also enjoyed a good month—with 80 anglers—being checked with 87 fish. The catch rate there also was two and one half fish per hour.

O'Leary Defeats Minico To Claim Freshman Title

O'Leary defeated Minico 54-48 Thursday night to claim the championship of the Robert Stuart City men's basketball tournament.

Times-News Gets City League Win

The Times-News, getting 10 points from Nick Fincher, dropped the Cove 88-41 in Twin Falls City League play Thursday night.

Baseball Meet Set In Mexico

NEW YORK (AP) — Baseball will hold its annual meetings both in major and minor leagues in Mexico City next winter.

Houston Belts Hardin-Simmons

Houston, Tex. (AP) — The Houston Astros beat Hardin-Simmons 10-4 in a baseball game against two teams.

Baseball Meet Set In Mexico

NEW YORK (AP) — Baseball will hold its annual meetings both in major and minor leagues in Mexico City next winter.

Baseball Meet Set In Mexico

NEW YORK (AP) — Baseball will hold its annual meetings both in major and minor leagues in Mexico City next winter.

Baseball Meet Set In Mexico

NEW YORK (AP) — Baseball will hold its annual meetings both in major and minor leagues in Mexico City next winter.

Baseball Meet Set In Mexico

NEW YORK (AP) — Baseball will hold its annual meetings both in major and minor leagues in Mexico City next winter.

Baseball Meet Set In Mexico

NEW YORK (AP) — Baseball will hold its annual meetings both in major and minor leagues in Mexico City next winter.

Baseball Meet Set In Mexico

NEW YORK (AP) — Baseball will hold its annual meetings both in major and minor leagues in Mexico City next winter.

Baseball Meet Set In Mexico

NEW YORK (AP) — Baseball will hold its annual meetings both in major and minor leagues in Mexico City next winter.

Baseball Meet Set In Mexico

NEW YORK (AP) — Baseball will hold its annual meetings both in major and minor leagues in Mexico City next winter.

\$100,000.00 LIQUIDATION

115 UNITS SALE

4 ACRES USED CARS AND TRUCKS UP TO 48 MONTHS TO PAY

Name Your Own Down Payment! Bank Rate Financing

2 YEAR G. W. WARRANTY

AUCTION PRICES OR LOWER THAN AUCTION!

Backed by BIG-HEARTED BOB REESE . . . New Car Dealer in Twin Falls for 28 Years.

SALE! SALE! SALE! STARTS FEBRUARY 8th

BOB REESE'S DODGE CITY 500 Block 2nd Avenue South, Twin Falls DODGE, CHRYSLER, SIMCA, IMPERIAL, DODGE TRUCKS

THERE ARE More Reasons

WHY PEOPLE BUY FROM GLEN JENKINS

- LOWER PRICES
- LARGER SELECTION
- BETTER SERVICE
- TOP TERMS
- INSTANT DELIVERY

Brand New '67 IMPALA 2-DOOR HARDTOP

Stock No. 7-142
 -Power Glide
 -V8 engine
 -R.S. Speaker
 -White Side Walls
 -Wheel covers
 -Heater

AS LOW AS \$2931

Brand New '67 CHEVROLET One-Half-Ton Pickup

Stock No. 7-147
 -2-tone Paint
 -8' Box
 -Heater

AS LOW AS \$2225

USED CAR SPECIALS

STOCK NO.	YEAR	MODEL	PRICE	DATE
6-101B	'63	VOLKSWAGEN 2-door	\$1295	\$1099
6-112B	'64	VOLKSWAGEN 2-door	\$1395	\$1195
6-176A	'61	FORD Station Wagon	\$995	\$795
6-504	'64	PONTIAC Catalina 4-door	\$2195	\$1995
5-581B	'61	RAMBLER Station Wagon	\$695	\$495
7-28A	'65	RAMBLER Station Wagon	\$1895	\$1695
5-185A	'58	FORD Thunderbird	\$995	\$845
6-191B	'63	FORD Fordor	\$1695	\$1495
6-89B	'56	CHEVY Station Wagon	\$295	\$195
6-6SA	'62	CHEVY 4-door	\$995	\$895
6-485	'63	CHEVY Sport Coupe	\$1595	\$1395
7-43A	'65	CHEVY 4-door	\$2395	\$1995
7-36A	'66	CHEVY Impala Sport Sedan	\$2795	\$2595
6-111A	'62	JEEP 1-ton	\$995	\$795
6-108A	'58	GMC 1/2-ton	\$695	\$495
6-454C	'62	GMC 1/2-ton	\$1395	\$1195
6-327A	'60	INTERNATIONAL 1/2-ton	\$795	\$695
6-123A	'63	INTERNATIONAL 1/2-ton	\$1695	\$1295
6-7	'59	CHEVY 1/2-ton	\$795	\$595
7-98B	'61	CHEVY 1/2-ton	\$1095	\$995
6-119A	'62	CHEVY 3/4-ton	\$1295	\$1095

97 Used Cars and Trucks To Choose From

Our business has been built on customer satisfaction and service after the sale—We want your business—your patronage is our only reason to exist! Through 38 years our success has been based on repeat business, the ultimate proof of complete service to the public. "MAY WE SERVE YOU?"

GLEN JENKINS Chevrolet, Inc.

USED CAR DEPARTMENT	NEW CAR DEPARTMENT
Hill Stanley 733-1842	D. A. McCulloch 733-7130
Charles Hitch 733-4017	Frank King 733-4336
Bruce Caughey 733-6981	John Carlson 733-4187
Leonard Eicher 733-1284	John Jenkins 733-6241
Larry Sackett 733-4280	

NO GIMMICKS Only Complete CUSTOMER SATISFACTION

When you trade At UNION MOTORS

1965 FORD 500 Fordor, V8 Cruiseomatic, power steering, radio, very, very low mileage. \$1895

1963 FORD Falcon station wagon, Economy 6-cylinder, Fordomatic, air, tinted, heater, overdrive, A-1 condition. \$995

1963 FORD T-Bird. If you're looking for a luxury car, you'll appreciate the perfect condition of this local trade-in. \$1895

1964 FORD Country sedan, V8, Cruiseomatic, power steering, air conditioning. Here's a top buy. \$1895

1964 OLDSMOBILE 4-door, Automatic transmission, radio, local one owner. \$1395

1958 PLYMOUTH 4-door station wagon, V8 engine, 4-door station drive, radio. \$2095

1963 OLDSMOBILE 2-door hardtop, V8 engine, automatic transmission, bucket seats, spotless A-1 condition. \$1295

1962 FORD Galaxie Fordor, V8 Cruiseomatic, radio, factory air conditioning. It's like new for you and out. \$1295

1963 FORD Custom 2-door. If you're looking for low cost dependable transportation look at this low cost buy. \$795

1966 FORD Custom 500 4-door. This car has standard transmission, very few actual miles. You'll want to hurry in on this great buy. \$2095

COMMERCIALS 1964 FORD pickup. Local one owner, completely equipped, V8, 4-speed, custom cab, radio, heater, Krenget hitch, wipers, mirrors, equalizer, perfect unit for a camper. \$1695

1953 FORD pickup. Here's a tip top condition complete with camper box. \$345

1961 FORD pickup. Long wheelbase, style-side box, 4-speed, radio, heater, Krenget hitch. \$1095

1961 FORD pickup. Style-side box, 4-speed, heavy duty tires and wheels, heavy duty throughout. \$1095

1955 DODGE 2-ton, 160" wheelbase hoist, V8 engine with 2-speed. \$895

1964 GMC Suburban. This 3-seat, 9-passenger has new cabinet, new tires, completely A-1 reconditioned and ready to move today. \$1895

1963 FORD pickup. Long wheelbase, style-side box, 4-speed, local one owner recent trade-in. \$1095

UNION MOTORS The Safest Place in Magic Valley to Buy Used Cars! NEW CAR DEPARTMENT 140 West Avenue, 733-5310 USED CAR DEPARTMENT 100 West Avenue, 733-5310 Hyon Moxey 733-7428 Henry Hill 733-5310 Dick Gillette 733-1587 Ralph Gillenwater 423-5374 Bill Beyster 733-2018 Ken McNew 733-3916 Ken Gerner 733-6216

FEBRUARY SPECIAL

BRAND NEW PONTIAC Tempest custom hardtop coupe, O.H.C. engine, white wall tires, radio, heater, deluxe wheel discs, custom Marroline interior.

\$388 DOWN \$66.88 PER MONTH

JOHN CHAVIS MOTORS 601 Main Avenue East 733-1823

SPECIAL Holiday through Saturday 1967 FORD Galaxie 500 4-door, hardtop, V8, automatic, real sharp. \$1295

BEST BUY AUTO SALES 506 1st Street—Ceres, Idaho 83707 507 Main West, Phone 733-9448

WORKMAN BROTHERS PONTIAC-CADILLAC Rupert, Idaho 436-3470

MILLER AUTO-HONDA-SALES Well stocked with late model Chev and Ford cars and pickups. New stock of door to door units. New low prices. Free demonstration. Sell-into or buy, 7 days a week. Truck Creek Road at Hayden 423-3178

VOLKSWAGEN, 1966 in color, Only 8,500 miles. Radio and heater. Top condition. Call 733-4646, 733-8181

OVERSEAS selling fine Cadillac Coupe DeVille, 1959 Liberty Lane or Buick Wildcat. \$25,000

CHEVY TRUCK 2-ton coupe, fully equipped, must see. Phone 733-7777

CADILLAC 1961 ambulance. Has folding benches, used for hauling crews or army ambulances. Pivotal front end. Call 733-4646

MALIBU, 1965 station wagon. Very good condition. Phone 326-6646, 733-2100

MILN, 1967, 1000 cubic inch 471. Very consider trade. Call 733-5040 or 733-4810

SHARP 1964 Ford for sale. See at 616 Adams or call 733-8181.

TRADING TIME AT WILLS USED CARS

1966 PLYMOUTH V8 Fury III 2-door hardtop. Radio, heater, automatic, power steering, factory warranty. \$2795

1965 CHEV Impala 4-door sedan. Radio, heater, power steering, automatic, low mileage, Sharp. \$1995

1965 PLYMOUTH Belvedere II station wagon. Radio, heater, standard transmission, factory warranty. Exceptional value. \$1795

1962 OLDS 88 4-door sedan. Radio, heater, power steering and brakes, Hydramatic. \$995

1961 RAMBLER Classic 4-door. Radio, heater, automatic, new overhaul on engine. \$595

1965 PLYMOUTH Belvedere Satellite 2-door hardtop. '383' cubic engine, automatic on the floor. Local one owner. \$1995

1964 COMET 2-door sedan. Radio, heater, standard transmission, clean. \$1095

1964 PONTIAC Bonneville 4-door hardtop. Radio, heater, power steering and brakes, automatic, air conditioning. \$2095

1962 COMET 4-door. Radio, heater, stand up button drive, radio. \$795

1963 FORD Galaxie V8 Fordor. Radio, heater, power steering, automatic. \$995

1963 PONTIAC Tempest 4-door. Radio, heater, automatic. \$995

1960 CHEV 2-door. 6-cylinder, radio, heater, standard transmission. \$395

1966 CHEV Impala 4-door hardtop. Radio, heater, power steering, Power Glide. \$2495

1963 FORD Meteor Custom 2-door hardtop. Radio, heater, power steering, automatic, local one owner. \$1195

1961 BUICK Electra 225 4-door hardtop. Radio, heater, power steering and brakes, automatic. \$895

1960 TRIUMPH Roadster TR3, 4-speed. \$595

1966 PLYMOUTH 4-door. Radio, heater, standard transmission. \$1995

1963 FORD Galaxie V8 Fordor. Radio, heater, power steering, automatic. \$995

1960 CHEV 2-door. 6-cylinder, radio, heater, standard transmission. \$395

1966 CHEV Impala 4-door hardtop. Radio, heater, power steering, Power Glide. \$2495

1963 FORD Meteor Custom 2-door hardtop. Radio, heater, power steering, automatic, local one owner. \$1195

1961 BUICK Electra 225 4-door hardtop. Radio, heater, power steering and brakes, automatic. \$895

1960 TRIUMPH Roadster TR3, 4-speed. \$595

1966 PLYMOUTH 4-door. Radio, heater, standard transmission. \$1995

1963 FORD Galaxie V8 Fordor. Radio, heater, power steering, automatic. \$995

1960 CHEV 2-door. 6-cylinder, radio, heater, standard transmission. \$395

1966 CHEV Impala 4-door hardtop. Radio, heater, power steering, Power Glide. \$2495

1963 FORD Meteor Custom 2-door hardtop. Radio, heater, power steering, automatic, local one owner. \$1195

1961 BUICK Electra 225 4-door hardtop. Radio, heater, power steering and brakes, automatic. \$895

1960 TRIUMPH Roadster TR3, 4-speed. \$595

1966 PLYMOUTH 4-door. Radio, heater, standard transmission. \$1995

1963 FORD Galaxie V8 Fordor. Radio, heater, power steering, automatic. \$995

1960 CHEV 2-door. 6-cylinder, radio, heater, standard transmission. \$395

1966 CHEV Impala 4-door hardtop. Radio, heater, power steering, Power Glide. \$2495

1963 FORD Meteor Custom 2-door hardtop. Radio, heater, power steering, automatic, local one owner. \$1195

1961 BUICK Electra 225 4-door hardtop. Radio, heater, power steering and brakes, automatic. \$895

1960 TRIUMPH Roadster TR3, 4-speed. \$595

1966 PLYMOUTH 4-door. Radio, heater, standard transmission. \$1995

1963 FORD Galaxie V8 Fordor. Radio, heater, power steering, automatic. \$995

1960 CHEV 2-door. 6-cylinder, radio, heater, standard transmission. \$395

1966 CHEV Impala 4-door hardtop. Radio, heater, power steering, Power Glide. \$2495

1963 FORD Meteor Custom 2-door hardtop. Radio, heater, power steering, automatic, local one owner. \$1195

1961 BUICK Electra 225 4-door hardtop. Radio, heater, power steering and brakes, automatic. \$895

1960 TRIUMPH Roadster TR3, 4-speed. \$595

1966 PLYMOUTH 4-door. Radio, heater, standard transmission. \$1995

1963 FORD Galaxie V8 Fordor. Radio, heater, power steering, automatic. \$995

1960 CHEV 2-door. 6-cylinder, radio, heater, standard transmission. \$395

1966 CHEV Impala 4-door hardtop. Radio, heater, power steering, Power Glide. \$2495

1963 FORD Meteor Custom 2-door hardtop. Radio, heater, power steering, automatic, local one owner. \$1195

1961 BUICK Electra 225 4-door hardtop. Radio, heater, power steering and brakes, automatic. \$895

1960 TRIUMPH Roadster TR3, 4-speed. \$595

1966 PLYMOUTH 4-door. Radio, heater, standard transmission. \$1995

1963 FORD Galaxie V8 Fordor. Radio, heater, power steering, automatic. \$995

1960 CHEV 2-door. 6-cylinder, radio, heater, standard transmission. \$395

1966 CHEV Impala 4-door hardtop. Radio, heater, power steering, Power Glide. \$2495

1963 FORD Meteor Custom 2-door hardtop. Radio, heater, power steering, automatic, local one owner. \$1195

1961 BUICK Electra 225 4-door hardtop. Radio, heater, power steering and brakes, automatic. \$895

1960 TRIUMPH Roadster TR3, 4-speed. \$595

1966 PLYMOUTH 4-door. Radio, heater, standard transmission. \$1995

1963 FORD Galaxie V8 Fordor. Radio, heater, power steering, automatic. \$995

1960 CHEV 2-door. 6-cylinder, radio, heater, standard transmission. \$395

1966 CHEV Impala 4-door hardtop. Radio, heater, power steering, Power Glide. \$2495

1963 FORD Meteor Custom 2-door hardtop. Radio, heater, power steering, automatic, local one owner. \$1195

1961 BUICK Electra 225 4-door hardtop. Radio, heater, power steering and brakes, automatic. \$895

1960 TRIUMPH Roadster TR3, 4-speed. \$595

1966 PLYMOUTH 4-door. Radio, heater, standard transmission. \$1995

1963 FORD Galaxie V8 Fordor. Radio, heater, power steering, automatic. \$995

1960 CHEV 2-door. 6-cylinder, radio, heater, standard transmission. \$395

1966 CHEV Impala 4-door hardtop. Radio, heater, power steering, Power Glide. \$2495

1963 FORD Meteor Custom 2-door hardtop. Radio, heater, power steering, automatic, local one owner. \$1195

1961 BUICK Electra 225 4-door hardtop. Radio, heater, power steering and brakes, automatic. \$895

1960 TRIUMPH Roadster TR3, 4-speed. \$595

1966 PLYMOUTH 4-door. Radio, heater, standard transmission. \$1995

1963 FORD Galaxie V8 Fordor. Radio, heater, power steering, automatic. \$995

1960 CHEV 2-door. 6-cylinder, radio, heater, standard transmission. \$395

1966 CHEV Impala 4-door hardtop. Radio, heater, power steering, Power Glide. \$2495

1963 FORD Meteor Custom 2-door hardtop. Radio, heater, power steering, automatic, local one owner. \$1195

1961 BUICK Electra 225 4-door hardtop. Radio, heater, power steering and brakes, automatic. \$895

1960 TRIUMPH Roadster TR3, 4-speed. \$595

1966 PLYMOUTH 4-door. Radio, heater, standard transmission. \$1995

1963 FORD Galaxie V8 Fordor. Radio, heater, power steering, automatic. \$995

1960 CHEV 2-door. 6-cylinder, radio, heater, standard transmission. \$395

1966 CHEV Impala 4-door hardtop. Radio, heater, power steering, Power Glide. \$2495

1963 FORD Meteor Custom 2-door hardtop. Radio, heater, power steering, automatic, local one owner. \$1195

1961 BUICK Electra 225 4-door hardtop. Radio, heater, power steering and brakes, automatic. \$895

1960 TRIUMPH Roadster TR3, 4-speed. \$595

1966 PLYMOUTH 4-door. Radio, heater, standard transmission. \$1995

1963 FORD Galaxie V8 Fordor. Radio, heater, power steering, automatic. \$995

1960 CHEV 2-door. 6-cylinder, radio, heater, standard transmission. \$395

1966 CHEV Impala 4-door hardtop. Radio, heater, power steering, Power Glide. \$2495

1963 FORD Meteor Custom 2-door hardtop. Radio, heater, power steering, automatic, local one owner. \$1195

1961 BUICK Electra 225 4-door hardtop. Radio, heater, power steering and brakes, automatic. \$895

1960 TRIUMPH Roadster TR3, 4-speed. \$595

1966 PLYMOUTH 4-door. Radio, heater, standard transmission. \$1995

1963 FORD Galaxie V8 Fordor. Radio, heater, power steering, automatic. \$995

1960 CHEV 2-door. 6-cylinder, radio, heater, standard transmission. \$395

1966 CHEV Impala 4-door hardtop. Radio, heater, power steering, Power Glide. \$2495

1963 FORD Meteor Custom 2-door hardtop. Radio, heater, power steering, automatic, local one owner. \$1195

1961 BUICK Electra 225 4-door hardtop. Radio, heater, power steering and brakes, automatic. \$895

1960 TRIUMPH Roadster TR3, 4-speed. \$595

1966 PLYMOUTH 4-door. Radio, heater, standard transmission. \$1995

1963 FORD Galaxie V8 Fordor. Radio, heater, power steering, automatic. \$995

1960 CHEV 2-door. 6-cylinder, radio, heater, standard transmission. \$395

1966 CHEV Impala 4-door hardtop. Radio, heater, power steering, Power Glide. \$2495

1963 FORD Meteor Custom 2-door hardtop. Radio, heater, power steering, automatic, local one owner. \$1195

1961 BUICK Electra 225 4-door hardtop. Radio, heater, power steering and brakes, automatic. \$895

1960 TRIUMPH Roadster TR3, 4-speed. \$595

1966 PLYMOUTH 4-door. Radio, heater, standard transmission. \$1995

1963 FORD Galaxie V8 Fordor. Radio, heater, power steering, automatic. \$995

1960 CHEV 2-door. 6-cylinder, radio, heater, standard transmission. \$395

196

T.F. Social Security Manager Explains Medical Deduction

Medicare beneficiaries who had doctor bills in the last three months of 1966 that counted toward their \$50 deductible may now count these same bills toward their deductible for this year, according to Rudolph E. Menghini, Social Security district manager in Twin Falls.

"If you did not have \$50 worth of covered services under medical insurance before Oct. 1, 1966," Mr. Menghini told medical care beneficiaries in the Twin Falls area, "the doctor bills you had in October, November and December before meeting your \$50 deductible for 1967 can also count toward your 1967 deductible."

Under the medical insurance part of Medicare, Mr. Menghini explained, a beneficiary is responsible for the first \$50 in a calendar year for covered services before Medicare starts paying 80 per cent of the rest of the bills. Beneficiaries should save their doctor bills and other bills for services covered by medical insurance until they reach \$50.

A special rule applies for persons who do not have \$50 worth of covered expenses in a year, or whose covered expenses do not reach \$50 until the last three months of the year. In both situations, Mr. Menghini said, any bills a beneficiary had in the

last three months of the year that counted toward part or all of his \$50 deductible may be counted again for the next year's deductible.

"It is particularly important, then, for beneficiaries who received no payment under medical insurance in 1966 because they didn't meet their \$50 deductible, to save their bills for October, November and December," Mr. Menghini stressed.

"If you have bills to show for the last three months, you may not have to pay all of the \$50 deductible for this year."

For example, Mr. Menghini said, suppose you visited the doctor once in August after Medicare started on July 1, and the bill was for \$20. You paid the bill because you knew that medical insurance would not start paying until after the first \$50.

Then, in November, you became ill and made several calls to the doctor for a total charge of \$40. Since Medicare starts paying after the first \$50, you would receive \$8.00 or 80 per cent of the bill you paid over the deductible. In addition, because your deductible was not met until the last three months of the year, \$30 or your \$10 bill in November would count toward your \$50 deductible for 1967. After you have had \$20 of covered expenses this year,

Medicare will begin paying 80 per cent of the rest of your doctor's bills for the year.

"The special rule would also apply if you didn't have enough covered expenses during the entire year to add up to the \$50 deductible," Mr. Menghini said.

For example, suppose you had no doctor bills between July 1, when the program started, and Oct. 1. In December you visited the doctor and received a \$25 bill from him. Since you did not meet the \$50 deductible for 1966, Medicare would pay nothing toward the bill.

Thus, starting in 1967, even though it will be a new calendar year, the \$25 bill you had in December would count toward your deductible. After another \$25 of covered expenses, Medicare will pay 80 per cent of bills over that amount.

USE TIMES-NEWS WANT ADS FOR FAST SELLING RESULTS

Slides Shown At Methodist Club

FILER—Slides of Egypt and the Holy Land were shown by Mr. and Mrs. Dick Stafford, Kimberly, at the monthly business meeting of the Filer Methodist Men's Club Wednesday.

The business meeting was conducted by Eddie Brown, and Loren Drake introduced Mr. and Mrs. Stafford. A chicken dinner was served by the Methodist women in the Fellowship Hall.

Frederickson's CHOCOLATES
 Fancy Heart Boxes or Plain . . . \$1.70 up
 309 2nd St. E. 733-7624

Tap Shoes Ballet Shoes LEOTARDS AND TIGHTS For dancing and exercising

Capezio
 THE DANCER'S COBBLER SINCE 1887

AT **Williams Shoes** Downtown Twin Falls

DINE AND DANCE TO THE MUSIC OF "MUSTIE" BRAUN

AT THE PIANO AND ORGAN

SUNDAY DINNER FREE!
 SERVED FROM 1:00 P.M. ADULTS ONLY

SUNDAY SWEEPSTAKES DRAWINGS

\$65,000 IN CASH
 26 - \$25.00 DRAWINGS

PLUS 2 - \$500.00 BANKS
 SUNDAY ONLY (No Purchase Needed)

WEDNESDAY AND FRIDAY ARE BANK NIGHTS
 3 - \$100.00 BANKS
 Plus Wheel O' Fortune Drawing Every 30 Minutes

SATURDAY WIN UP TO \$100.00 ON THE WHEEL O' FORTUNE
 Drawings Every Few Minutes, Register Free, Bring Your Sweepstakes Tickets.



HIGHWAY 93 SOUTH
 LAVELLE and ROBERTA, BARTON JACKPOT, NEV.

CLUB 93 CAFE
 HARVEY and HAZEL WRIGHT

30 LUCKY LICENSE WINNERS
 Register Free. All Week
 Winners Posted Wednesday and Thursday
\$25 - \$10 - \$5

Free!

Another '67 "CAMARO" Will Be Given Away Sunday!

The year's hottest sports car . . . purchased especially for Cactus-Pete's from Glen Jenkins in Twin Falls! Free Drawings start promptly at 2:00 p.m. Sunday, February 12th. Be sure and bring your series "H" membership cards. It costs you nothing to be eligible to win. Register free!

In The Gala Room!

FRIED CHICKEN

Southern Fried chicken, served family style with all the trimmings. SUNDAY, FEBRUARY 12th in the Gala Room. Bring the whole family.

All you can eat **1.00**

Bobby Durham & Jeannie O'Neal
 Capital Recording Artists and their Band
 Now Appearing Nightly in The Gala Bar

Friday and Saturday Buffets

SEAFOOD EVERY FRIDAY NIGHT: Ocean fresh seafoods flown in and prepared by master chefs. Complete assortment of entrees and salads. All you can eat \$2.75

ROAST BARON OF BEEF: Every Saturday evening in the Gala Room. Choice primo beef, cooked to perfection and served just the way you like it. Dozens of salads from which to choose. All you can eat \$2.75

MARY OWENS DUO AT THE GALA BARI

"The Fun Spot South of The Border"

CACTUS PETE'S