

# Phone Service Near Normal Strike 90 Per Cent Effective

By NEIL GILBRIDE  
AP Staff Writer  
WASHINGTON (AP) — The AFL-CIO Communications Workers said their biggest telephone strike in 21 years was 90 per cent effective today in most areas of the nation, but telephone service remained near normal.

Many of the strikers marched in picket lines in sunny spring weather, singing songs and some carried signs joking with management officials who trooped into telephone exchanges to take over their jobs.

The strike had a minimal effect on the Bell System's nationwide dialing network, but the American Telephone & Telegraph Co. said service was disrupted in several areas when cables were cut.

Ohio Bell Telephone Company said the FBI had been asked to investigate one cable cutting that affected the service to a Federal Aviation Agency control center in Oberlin, Ohio.

Damage to cables was reported also in Indiana and Florida, and trouble of undetermined origin was reported in a cable in Seattle, Wash.

Operators, repairmen, line-men, clerks and other employees of Bell System companies have gone on strike in 15 states and the District of Columbia.

Picket lines set up by the union's 200 telephone installer members, who worked nationwide for the Western Electric Co., spread the strike into a total of some 40 states.

Joseph A. Beirne, the union's president, urged that 600,000 employees not vote on strike to serve the installers' picket lines in support of the union's wage demands.

The strike, which began in most areas Thursday afternoon, was the first nationwide telephone walkout since a 44-day strike in 1947.

A union spokesman said there were no reports of any damage to management officials on the wage dispute, but, "We are hopeful the parties can get together to start making sense to each other at the earliest possible moment."

Director William E. Smikin of the Federal Mediation and Conciliation Service said "We are in close touch with the union."

Company officials promised to maintain most service with supervisors.

"We ask all employees to maintain and protect telephone service," said Ben S. Gilmer, AT&T spokesman for telephone & Telegraph Co., parent firm of the Bell System.

# Pickets Man Post At Phone Company; Service Is OK

The nationwide strike of Communications Workers of America continued Friday and the impact of the massive walkout was being felt in Twin Falls.

Pickets massed in front of the Mountain States Telephone Co. building at 1 p.m. and held a demonstration until 7 a.m. Friday and union officials in Twin Falls said the picketing would continue as long as the strike lasts.

Frank Long, district director of the telephone company, said Friday supervisors are manning the switchboards and helping with long distance calls. He said about one-third of the regular operator force has reported for work and he has refused to honor the Western Electric employee strike. Also, all repairmen and installers for the company have reported to work in Twin Falls.

All calls into and out of Twin Falls were placed Thursday night and early Friday, although there was a slight delay in some cases.

Many of the supervisors are getting their sea legs again, but we are improving and I see no real impairment of service," Long said.

A contract between the Communications Workers of America and Mountain States is still pending, but contract negotiations between the union and Western Electric has expired.

# 3,000 Leave Jobs In Utah, South Idaho

By The Associated Press  
Nearly 3,000 telephone workers in Utah and southern Idaho left their jobs Thursday in a nationwide strike ordered by the AFL-CIO Communications Workers of America.

Supervisory personnel were assigned to switchboard and maintenance duties. There were no reports of disruption in service.

A company spokesman said the extent of the strike in Utah was known within a few hours of how many employees show up for work, Utah has a right-to-work law.

The first apparent effect of the strike came when switchboard operators in both states joined other workers in a nationwide cross-picket lines of strike employees of Western Electric Co., a manufacturing subsidiary of the Bell System.

There are 700 operators in Utah. Most of those came out when the picket lines were established," said Norma Bozeman, Utah director of the Communications Workers of America in Boise. Mrs. Charlotte Pose, Idaho union director, said Western Electric workers' pickets were being reported.

# U.S. Embassy, Ky Deny Report That CIA Fired Him

SAIGON (AP) — Both the U.S. Embassy and Vice President Nguyen Cao Ky today denied a report being investigated by the Senate subcommittee that the CIA fired Ky for smuggling opium in 1952.

The report, made to the Senate Foreign Expenses subcommittee, said Ky commanded air crews in a secret CIA operation to bring opium to North Vietnam and to smuggle it to the Saigon to Ky for smuggling opium in 1952.

The report, made to the Senate Foreign Expenses subcommittee, said Ky commanded air crews in a secret CIA operation to bring opium to North Vietnam and to smuggle it to the Saigon to Ky for smuggling opium in 1952.

The U.S. Embassy said that there was "no truth in the story that Ky was removed from any position or any element of the U.S. government for opium smuggling or for any other reason."

Asked if the embassy had any information connecting Ky with opium smuggling, an embassy spokesman said only: "There is no truth to the allegation."

The vice president just laughed when he saw the story, "I do not know where he said it was groundless news, and there is no truth to it at all."

The spokesman added that Ky took part in the flights over North Vietnam, but that he was not involved in smuggling. You know he pays no attention to matters about money."

The subcommittee's staff director, Joseph Lipman, made the report available to the Associated Press in Washington with the stipulation that the source could not be identified.

Lipman said the report was considered highly reliable. The subcommittee is headed by Sen. Ernest Gruening, D-Alaska, a critic of U.S. involvement in Vietnam.

The author of the report said he was sent to Vietnam in March 1952 by an American company to serve as an inspector and advise to ground crews that maintained the aircraft operating from Saigon. "Take care of the company," the report said, "was a flimsy excuse set up by the CIA (and an airframe) operating from Saigon."

Sen. Hubert H. Humphrey, D-Minnesota, said the report was "a program called Operation Haylift."

Operation Haylift was flying Vietnam agents into North Vietnam for the purpose of sabotage such as blowing up railroads, bridges and etc. When the program first started, it was run by Ernest Gruening, D-Alaska, a critic of U.S. involvement in Vietnam.

The author of the report said he was sent to Vietnam in March 1952 by an American company to serve as an inspector and advise to ground crews that maintained the aircraft operating from Saigon. "Take care of the company," the report said, "was a flimsy excuse set up by the CIA (and an airframe) operating from Saigon."

Sen. Hubert H. Humphrey, D-Minnesota, said the report was "a program called Operation Haylift."

Operation Haylift was flying Vietnam agents into North Vietnam for the purpose of sabotage such as blowing up railroads, bridges and etc. When the program first started, it was run by Ernest Gruening, D-Alaska, a critic of U.S. involvement in Vietnam.

# North Vietnamese, Reject Ten New Site Proposals

TOKYO (AP) — North Vietnamese officials today rejected ten new proposals for peace talks, saying they were "extremely absurd and insulting conditions."

Norway, the 10 places advanced by Mr. Dean Rusk fail to meet even the conditions proposed by Hanoi.

The spokesman added: "The United States demands a choice of a site with the two parties have representatives in the places advanced by Mr. Dean Rusk there are only U.S. embassies."

The United States demands that first did not set any conditions with regard to the choice of a site for talks, have come to pile up extremely absurd and insulting conditions. The spokesman said that the United States demands a choice of a site with the two parties have representatives in the places advanced by Mr. Dean Rusk there are only U.S. embassies.

The United States demands that first did not set any conditions with regard to the choice of a site for talks, have come to pile up extremely absurd and insulting conditions. The spokesman said that the United States demands a choice of a site with the two parties have representatives in the places advanced by Mr. Dean Rusk there are only U.S. embassies.

The United States demands that first did not set any conditions with regard to the choice of a site for talks, have come to pile up extremely absurd and insulting conditions. The spokesman said that the United States demands a choice of a site with the two parties have representatives in the places advanced by Mr. Dean Rusk there are only U.S. embassies.

# U.S. Interest Rates Hiked Again

WASHINGTON (AP) — Americans face the prospect of harder-to-get loans at higher interest rates following the second increase in little more than a month in the Federal Reserve System's discount rate.

In what it termed an attempt to beat back accelerating inflation, the Federal Reserve Board stepped higher on the economic brakes in approving effective today a discount rate of 5.5 per cent for 3 of its 12 banks—New York, Philadelphia and Minneapolis—up from 5.0 per cent.

The other nine banks are expected to follow in a move to raise the rate to 6 per cent. Interest rates on loans throughout the economy.

A nationwide AP survey showed meanwhile that interest rates on home mortgages are nearing 8 per cent already in some sections and the cost of an average home has climbed about 100 percent since 1962.

The new rate is the highest since just before the 1929 stock market crash when it went to 6 percent.

One government source said the boost from 5 per cent was not unexpected in view of congressional inaction on President Johnson's request for the 10 per cent income tax surcharge, pushed by the administration as an anti-inflation weapon.

A boost in the discount rate from 4.5 to 5 per cent in mid-March was designed to stem inflation and cope with the gold crisis which reached its peak at that time.

The board cited spiraling inflation and the desire to strengthen the dollar abroad in announcing its action. It also said the time approving higher interest rates — up to 6.25 per cent — which banks may pay to attract more savings through certificates of deposit of \$100,000 or more.

The second move will enable commercial banks to compete more effectively for savings with high interest-rate, close-to-market, money market mutual funds, corporate bonds, for example.

Other interest rates paid by banks remain unchanged including the 4 per cent maximum on passbook savings accounts and the 5 per cent maximum on certificates of deposit of less than \$100,000.

The discount rate is the charge commercial banks must pay when they borrow money from the Federal Reserve. Other interest rates are pegged upward from it.

Earlier this week the Commerce Department reported that the sharpest dollar increase ever in the economy during the first half of 1967 was 6.2 percent — and listed the inflation rate at an unacceptable 4 per cent.

# Powell Will Campaign For Re-Election

BIMINI, Bahamas (AP) — Claiming white Americans are bent on a policy of exterminating Negroes, Adam Clayton Powell will today launch a vigorous campaign for re-election May 4 and will inform the black and Puerto Rican Harlem of the danger confronting them.

Racism excluded Adam Clayton Powell, White House aide Martin Luther King Jr. and white racists are making a last-minute effort to prevent Powell from running for an ultimate pool of genocide against black people, Powell said.

He said he would lead a delegation to the United Nations to demand that the United States be expelled from the organization because of its policy of exterminating Negroes.

He said he would lead a delegation to the United Nations to demand that the United States be expelled from the organization because of its policy of exterminating Negroes.



CATHRYN HOLM

... of Twin Falls has been named as the wife of the late shipyard worker by the State Department and will study French at the University of Clermont-Ferrand in France. She will leave the United States in September. She is now a student at the University of Idaho.

Miss Holm is the daughter of Mrs. Joyce Holm, 702 Third Ave. W., and she plans a career in foreign languages. She will graduate from the university this spring.

# Joint Effort Cures Girl Of Lifelong Eye Defect

Six-year-old Paula Patterson of Twin Falls has been cured of a lifelong eye defect thanks to help from two Twin Falls Lions Clubs, the Office of Economic Opportunity and a local physician.

The girl is the daughter of Paul Patterson, 372 Diamond Ave., and underwent eye surgery at Magic Valley Memorial Hospital April 9 and Friday was reported in good condition at home. Her father said it was a miracle that she was cured.

The need for the operation was discovered recently through the Headstart program. Funds from the OEO covered only part of the cost of the operation, so help was needed from the Lions Clubs and the Office of Economic Opportunity.

There is a local physician offering his services and the operation was scheduled.

Officials at the OEO said the operation had been done for years but not all of the bills for the operation have been received yet, but it is felt the Lions Clubs will take care of the costs of the surgery.

Paula's father Friday expressed thanks to all of those who helped.

# Firing Erupts

TEL AVIV (AP) — Fighting erupted today across the Jordan River frontier in the Israeli-occupied West Bank of the Sea of Galilee, the Israeli Army announced.

A spokesman said Jordanian forces opened up at 4:30 a.m. and followed up with a mortar shell at 3:30 p.m. from two Israeli positions.

# Wanted Man Identified As James E. Ray

WASHINGTON (AP) — The FBI today identified Earl Starvo Galt, wanted for the killing of Dr. Martin Luther King Jr., as James Earl Ray, 40, an escaped convict from the Missouri State Penitentiary.

The FBI said he was identified through "a systematic and exhaustive search of several fingerprints" uncovered in the King case against the fingerprints of Ray.

Persons for whom wanted notices are on file in the bureau's identification division.

Ray was reported missing from the Missouri State Penitentiary at Jefferson City April 23, 1967, he was serving a 99-year sentence for an armed robbery in St. Louis and operating a motor vehicle without the owner's permission.

Ray, who had been at the prison since March 17, 1960, spent some time in September 1965 in the maximum security ward at the state hospital in Fulton, Mo.

The FBI said Ray has an arrest record dating at least to 1949 when he was convicted for burglary in Los Angeles. He also was convicted in 1952 for armed robbery in Chicago and in 1955 for forging U.S. postal orders in Missouri.

He has served terms in Alton, Angles-Court jail, state prison at Joliet and Pontiac, Ill., and a federal penitentiary at Leavenworth, Kan.

# SATELLITE LAUNCHED

MOSCOW (AP) — The Soviet Union launched its second unmanned earth satellite in two days today.

# U.S. Makes Hottest Air Raids Of Year

SAIGON (AP) — U.S. warplanes made their heaviest raid of the year on North Vietnam Thursday, flying the largest number of missions in nearly four months, military spokesmen said.

Hitting targets in the southern panhandle in accordance with President Johnson's curtailment of U.S. pilot sorties, the planes laid clear weather to fly 145 missions, one more than a year previous record on Jan. 6. It was the largest number since Dec. 26, when 150 were flown.

The total was nearly triple the average number of missions the Americans flew against enemy targets in the southern part of North Vietnam before Johnson on April 1 ordered them to stay south of the 20th parallel of latitude.

Ten days later the President, in a move never publicly announced, put the northern limit for bombings raids at the 19th parallel, 170 miles north of the demilitarized zone.

Some U.S. sources say that despite Johnson's curtailment order allowing the North Vietnamese to move war supplies with impunity down to the 19th parallel, a distance of 140 miles from Hanoi, the United States very little change in enemy truck traffic in the southern panhandle.

The U.S. Command said a limited damage assessment showed the raiders Thursday destroyed 10 U.S. pilot aircraft, 13 trucks, 13 trucks and 16 bridges or sampans; cut bridges and roads in many places, and touched off several secondary explosions and fires, indicating the planes hit fuel or ammunition dumps.

The pilots reported "aircraft fire was light to moderate. One of the warplanes hit a helicopter crew of the war-torn U.S. Army. U.S. troops in the area were killed. There were no survivors.

# Traffic Deaths

| Idaho        |    |
|--------------|----|
| 1968         | 70 |
| 1967         | 62 |
| Magic Valley |    |
| 1968         | 7  |
| 1967         | 10 |

# President No Longer Sees Need For Special Address

By FRANCES LEWINE  
AUSTIN, Tex. (AP) — President Johnson has called off a planned speech to Congress that many felt would include sweeping new attacks on big-city problems.

The newsman Thursday wrote from California that since he had originally scheduled the address, Congress has enacted a civil rights bill with a strong open-house character. He said he therefore no longer sees any need for a special address to a joint congressional session.

Johnson announced April 5 he would appear before Congress. This word came a day after the assassination of Dr. Martin Luther King Jr. However, the President postponed his April 8 speech when he learned later that the slain civil rights leader's funeral was not to be held in Memphis.

Johnson had said he would make recommendations and suggestions for action — helpful to both.

He proposed Ceylan, Japan, Thailand, Pakistan, Nepal, Malaysia, Italy, Belgium, Finland, Austria.

Rusk advanced the new proposal after the United States objected to Phnom Penh and Hanoi, North Vietnam also was charged with supporting the Viet Cong. Rusk said he would call for the presence of its Vietnam war allies, particularly South Vietnam, at the first U.S.-North Vietnamese serious and responsible answer from Hanoi.

The U.S. government's torturous maneuvers, calculated to create additional difficulties and delay the preliminary contacts between the D.R.V.N. (North Vietnam) and the U.S.A., have swindled the American people.

Rusk Thursday proposed 10 additional sites for peace contacts and said it is "time for a contact."

Daily Weather Report

From Times-News 24-Hour Weather Bureau Wire

Temperatures

Table of temperatures for various locations including Albany, Albuquerque, Anchorage, etc.

Forecast

Variable cloudiness today and Saturday. Chance of scattered showers...



Hawaii

Table of weather forecasts for Hawaii and Alaska, Canada.

Idaho

Table of weather forecasts for Idaho cities like Aberdeen, Bear Lake, etc.

Twin Falls

News In Brief: A box will be at the Masonic Temple at 12:30 p.m. Saturday...

Summary, Extended Outlook

A fast moving cold front has brought cloudiness and windy conditions...

Magie Valley Hospitals

St. Benedict's, Jerome, Magic Valley Memorial, etc. Births and deaths.

News Of Record

TWIN FALLS COUNTY: Two men in jail. A man went into medicine in matrimony...

Wiswal Gets Trophy For Best Speech

JEROME — John Wiswal received the speakers trophy for his speech at the Jerome Toastmaster's Club...

Police Accuse 16-Year-Old Of Burglaries

Twin Falls police arrested a 16-year-old boy charged with burglarizing homes in the past three weeks...

Police Accuse 16-Year-Old Of Burglaries

The burglaries the youth is accused of were reported to include break-ins at the Three Minute Car Wash on Main...

Magie Valley Obituaries

Dean Stewart, James H. Jones, Mrs. Luther, etc. Funeral services.

Magie Valley Obituaries

Dean Stewart, James H. Jones, Mrs. Luther, etc. Funeral services.

News Of Servicemen

James D. Vining, son of Mr. and Mrs. Dale Vining of 603 E. Avenue, Jerome, was among graduates of the Army Reserve Officers Training Course...

White Youths Attack Group Of Negroes

BOSTON (AP) — A gang of white youths attacked a carload of Negro students at a city street today, stabbing one to death and beating and stabbing the others...

Royal Air Force Plane Hits Hill

LONDON (AP) — A Royal Air Force Shackleton patrol plane slammed into a Scottish hillside in thick mist today...

Woman Injured

Christina B. Peterson, 30, 388 Pierce st., was injured in a Valley Memorial Hospital Friday for minor injuries...

Magie Valley Obituaries

Magie Valley Obituaries: Mrs. Luther, Dean Stewart, James H. Jones, etc.

Third Term Sought By Ray Lincoln

Ray Lincoln, Twin Falls, has announced that he will seek a third term in the Idaho House of Representatives from Legislative District No. 23...

Loveland To Talk At GOP Style Show

FAIRFIELD — Loveland County State Sen. Don Cavazos, Republican, will be a guest speaker at a spring luncheon...

Bomb Threat Clears Buhl High School

BUHL — Nearly 450 Buhl High School students got an unexpected announcement Thursday...

Man Injured In Traffic Mishap

A Twin Falls man was injured slightly Thursday night but did not require hospital treatment...

Theft Reported

A soft drink machine in front of Carlson's Service Station at 202 Washington was broken into Friday...

Advertisements for Mary Carter Paints, Twin Falls Cemetery, and Kimbly Cold Storage.

# Television Schedules

Friday, April 19, 1968

## PROMISING SPECIALS

7 p.m. - 3, 11, 2B - 8 p.m. - 3, 11  
 7-3-Young Cassidy\* as a biography adapted from Irish playwright Seamus Heaney's play "The Mirror in My House." The cast includes Rod Taylor and Flora Robson. (1965)  
 7-9-3, 7, 8 - Special, "Man and the Sea" portrays the ocean as Earth's greatest source of food, minerals and fuel. Frank McCovey reports on the recent scientific developments to tap other wealth from the sea.  
 7-10-2B - News, Spets., Wthr.  
 7-11-3 - News  
 7-12-3 - Wild, Wild West  
 7-13-4 - Rawhide  
 7-14-3 - Tarzan  
 7-15-5 - News  
 7-16-7 - Chessposium  
 7-17-11 - Wild, Wild West  
 6:00-25L - News  
 2B - Wild, Wild West  
 75L - Let's Speak - English  
 5 - News  
 7B - Monkeys  
 6:15-75L - Misterogers  
 6:30-25L - Tarzan  
 3 - Gomer Pyle  
 5 - Gomer Pyle  
 11 - Gomer Pyle  
 11 - Wizard  
 7B - Star Trek  
 6 - Star Trek  
 6:45-75L - Friendly Giant  
 7:00-2B - "Young Cassidy"  
 3 - Movie, "Young Cassidy"  
 11 - Movie, "Young Cassidy"  
 2 - Wild, Wild West  
 75L - Writers' Showcase  
 7:30-4 - Operational Entertainment  
 75L - French Chef  
 7B - Operations Entertainment  
 8 - Second Hundred Years  
 25L - Star Trek  
 8:00-75L - Julia Child Special  
 5 - Movie, "Young Cassidy"  
 8 - Guns of Will Sonnett  
 8:30-4 - Guns of Will Sonnett  
 7B - Guns of Will Sonnett  
 25L - Hollywood Squares  
 6 - Hollywood Squares  
 9:00-4 - Judd  
 3 - Rat Patrol  
 75L - NFL Playhouse  
 11 - Judd  
 2B - Dragnet  
 25D - Special, "Man and the Sea"  
 7B - Special, "Man and the Sea"  
 9:30-2B - Judd  
 3 - Flying Nun

Saturday, April 20, 1968

## PROMISING SPECIALS

12:00 p.m. - 25L, 7B, 8, 11 - Baseball, Indians versus Red Sox at Boston. Sandy Koufax, Curt Gowdy and Pee Wee Reese will live the report.  
 5 p.m. - 7B, 8, 11 - Special, "The Wizard of Oz," will be telecast for the 50th consecutive year. Judy Garland and Ray Bolger play the lead roles.  
**SATURDAY MORNING**  
 6:00-4 - Farm Report  
 5 - Sunrise Semester  
 6:30-7B - Agriculture U.S.A.  
 7:00-25L - Super 8 c  
 2B - Frankenstein Jr. c  
 3 - Frankenstein Jr. c  
 4 - Gopher c  
 7B - Super 8 c  
 8 - Super 8 c  
 11 - Super 8 c  
 5 - Frankenstein Jr. c  
 7:30-25L - Super President c  
 2B - Super President c  
 3 - Fantastic Four  
 4 - Fantastic Four  
 7B - Super President c  
 8 - Super President c  
 11 - Super President c  
 6:00-4 - Flintstones c  
 2B - Shazzan! c  
 3 - Spider-Man  
 4 - Spider-Man  
 7B - Shazzan! c  
 8 - Flintstones c  
 11 - Flintstones c  
 6:30-25L - Samson & Goliath c  
 2B - Space Ghost c  
 3 - Journey c  
 4 - Journey c  
 5 - Space Ghost c  
 7B - Samson & Goliath c  
 8 - Samson & Goliath c  
 11 - Samson & Goliath c  
 9:00-25L - Birdman c  
 2B - Moby Dick c  
 3 - Moby Dick c  
 4 - King Kong c  
 5 - Moby Dick c  
 7B - Birdman c  
 8 - Birdman c  
 11 - Birdman c  
 9:30-25L - Atom Ant/Secret Squirrel c  
 2B - Atom Ant/Secret Squirrel c  
 3 - Superim/Aquaman c  
 4 - Superim/Aquaman c  
 5 - George of the Jungle c  
 7B - Atom Ant/Secret Squirrel c  
 8 - Atom Ant/Secret Squirrel c  
 11 - Atom Ant/Secret Squirrel c  
 10:00-4 - Top Cat  
 7B - Top Cat  
 8 - Top Cat  
 11 - Top Cat  
 10:30-25L - Cool McCool  
 11 - Cool McCool  
 4 - American Bandstand  
 7B - American Bandstand  
 8 - American Bandstand  
 11 - American Bandstand  
 11:00-25L - Lone Ranger  
 2B - Lone Ranger  
 3 - Lone Ranger  
 4 - Lone Ranger  
 7B - Happening '68  
 11 - Happening '68  
 2 - Road Runner  
 3 - Road Runner  
 4 - Happening '68  
 7B - Happening '68  
 11 - Happening '68  
 Noon-3 - Public Service Report  
 2B - Fantastic Four  
 3 - Fantastic Four  
 4 - Open Door in Learning  
 25L - Baseball  
 5 - Movie, "The Painted Veil"  
 11 - Baseball  
 12:30-4 - Baseball  
 2 - Film Feature  
 2B - Spider-Man  
 4 - S.P.D.  
 1:00-4 - Hi Science Club  
 2B - Hi Science Club  
 4 - You Asked For It  
 1:30-2B - Navy Film  
 3 - TBA  
 4 - TBA  
 5 - Film Feature  
 2:00-2B - CBS Golf Classic  
 3 - CBS Golf Classic  
 4 - Tournament of Champions  
 5 - Tournament of Champions  
 6 - Tournament of Champions  
 7 - Tournament of Champions  
 8 - Tournament of Champions  
 9 - Tournament of Champions  
 10 - Tournament of Champions  
 11 - Tournament of Champions  
 3:00-4 - Faces and Places  
 4 - World of Sports  
 7B - World of Sports  
 3 - World of Sports  
 11 - World of Sports  
 8 - Big Picture  
 25L - Inspiring Editor  
 2B - Film Feature  
 8 - Rifleman  
 8 - Rifleman  
 4:00-25L - Car and Track  
 2B - Wizard  
 3 - Twilight Zone  
 4 - Death Valley Days  
 4:30-3 - King Kong  
 25L - High Chaparral  
 4 - High Chaparral  
 5 - News  
 7B - Outdoor Sportsman  
 11 - Hi Science Club  
 5:00-2B - News  
 3 - News, weather, sports  
 7B - Special, "The Wizard of Oz"  
 8 - Special, "The Wizard of Oz"

## Army Admits Wind Carried Nerve Gas

WASHINGTON (AP) - The Army conceded Thursday that nerve gas dropped from a plane probably was carried on the wind to a target in western Utah, where more than 6,000 sheep died last month.

But the Army says it remains puzzled that humans and livestock had not seriously affected by the experimental chemical.

The sheep were dying March 11 in Skull Valley and Rush Valley, not far from Dugway Proving Ground, where the nerve gas tests had taken place the day before.

"It can be postulated that any very small particles of agent remaining airborne could have been transported into the areas of Skull Valley and Rush Valley where the sheep were later affected," the Army report read.

Shortly after the Army acknowledgment, Sen. Wallace F. Bennett, R-Utah, introduced legislation in the Senate to pay ranchers for losses of sheep, game and profits as the result of the gas test.

"The Army said its investigation will continue because it suspects the sheep died from a combination of factors, of which the nerve gas was only one."

## Expedition Reaches North Pole

WASHINGTON (AP) - The Weather Bureau said today a six-man American-Canadian expedition became early this morning the first to reach the North Pole by surface travel since the 1890 Peary expedition.

A bureau spokesman said the news came from the agency's Arctic weather station at Ellesmere Island in Canada's north-west territories which has been keeping radio tabs on the adventurers.

The expedition, headed by Ralph Plaisted, a St. Paul, Minn., insurance man, made an attempt to reach the North Pole last year, turning back 530 miles short of the goal because of rapidly melting ice and bad weather.

The explorer team has been traveling in gasoline-powered sleds, the report says.

The bureau said it had received this message from the Ellesmere Island station at Eureka, which is jointly operated by the United States and Canada where some primary task would be to work out a peaceful return to civilian rule within the "shortest possible time."

The movement also announced the recall of Col. John Bangura, currently counselor in the Sierra Leone Embassy in Washington, and Lt. Col. Anthony Genda, ambassador to Liberia, to serve as force and senior army and police officers. About 40 senior army and police officers have been arrested in a dusk-to-dawn curfew in the force, although conditions were reported almost back to normal today.

## Ready To Talk

LAGOS, Nigeria (AP) - Biafran radio said today the secessionist Biafran government is ready to begin peace negotiations within 48 hours to end Nigeria's 10-day secessionist rebellion. The Biafran government said Thursday it is prepared to talk "talks about peace talks."

## First Details Of African Coup Given

FREETOWN, Sierra Leone (AP) - First details of a coup by a group of army noncommissioned officers in this small West African state came this morning in a broadcast by someone who identified himself only as "Serpent Major, Rogers."

Sierra Leone had been cut off from the outside world since Thursday as reports from neighboring countries told of the military regime of the National Revolution Council, headed by Brig. Andrew T. Juxon-Smith, had been ousted.

The morning's broadcast said Juxon-Smith had been arrested and a new 14-man council set up under the chairmanship of Warrent Officer Patrick Catchpole. Sgt. Maj. Rogers said all diplomatic missions that carry out normal and "have no fear."

Deputy Chairman William Leigh of the Council and other senior army and police officers had also been arrested, Rogers said, accusing council members of having practiced "bribe taking and corruption" since taking over 14 months ago.

"Our immediate aim is to re-establish civilian rule," he declared, adding that the Council has been dissolved.

The new regime, styled the "Anti-corruption Revolutionary Movement," announced Thursday night formation of a seven-man national interim council of four army and three police officers whose primary task would be to work out a peaceful return to civilian rule within the "shortest possible time."

The movement also announced the recall of Col. John Bangura, currently counselor in the Sierra Leone Embassy in Washington, and Lt. Col. Anthony Genda, ambassador to Liberia, to serve as force and senior army and police officers. About 40 senior army and police officers have been arrested in a dusk-to-dawn curfew in the force, although conditions were reported almost back to normal today.

## Idaho News

**DEAL ENTERS RACE**  
 BOISE (AP) - Homer S. Deal, Boise insurance man, announced Thursday he is Republican candidate for the state Senate from District 17.

He is a brother of the late Ed H. Deal, Idaho's first lieutenant governor who died shortly after his inauguration as secretary of state.

**REACHES RECORD**  
 WALLACE, Idaho (AP) - New Park Mining Co. reported Thursday net income last year reached a record \$351,409, or 10 cents per share.

The firm said in an annual report that its previous high net income was \$286,334, or 8 cents a share in 1956.

**SEMINAR PLANNED**  
 WALLACE, Idaho (AP) - A silver seminar expected to attract investment analysts from throughout the country has been scheduled here for June 27-28.

It was announced Thursday a spokesman for Collins Security Corp. of Denver, Colo., said 50 investment analysts have been invited to get a first-hand look at operations in this silver mining center. Collins Security is in charge of arrangements.

**TOPIC IS SET**  
 IDAHO (AP) - The non-graded school will be the topic at a conference scheduled for April 25-26 at Idaho Falls, according to Victor A. Cushman, director of the Snake River Center for improvement of instruction.

**GLASS' SPECIAL "GREEN MONSIEUR" LAWN GRASS is Green**  
 LONG AFTER THE COST IS FORGOTTEN (Contains no Clover, Ryegrass or Filler)  
**GLOBE Seed & Feed**  
 Truck Lane 733-1373

**SIGNS WITH AGENCY**  
 NEW YORK (AP) - Mayor Lindsay, the mayor's 13-year-old daughter who made her modeling debut last fall, has signed with modeling agency to work as a \$60-an-hour professional.

She is a daughter of the late John F. Kennedy.

|                                                                                                                                                                                                                                                                                                                        |                                                                                                                                                                                                                                                                                                                    |                                                                                                                                                                                                                                                                                                                |                                                                                                                                                                                                                                                                    |
|------------------------------------------------------------------------------------------------------------------------------------------------------------------------------------------------------------------------------------------------------------------------------------------------------------------------|--------------------------------------------------------------------------------------------------------------------------------------------------------------------------------------------------------------------------------------------------------------------------------------------------------------------|----------------------------------------------------------------------------------------------------------------------------------------------------------------------------------------------------------------------------------------------------------------------------------------------------------------|--------------------------------------------------------------------------------------------------------------------------------------------------------------------------------------------------------------------------------------------------------------------|
| 4-Dating Game<br>6:00-Newlywed Game<br>25L-Special, "The Wizard of Oz"<br>6:30-2B-Mo. Three Sons<br>5-Mo. Three Sons<br>25L-Saint<br>3-Lawrence Welk<br>4-Lawrence Welk<br>7B-Lawrence Welk<br>11-Lawrence Welk<br>7:00-2B-Hogan's Heroes<br>3-Hogan's Heroes<br>8-Movie, "Winchester 73"<br>7B-Movie, "Winchester 73" | 7:30-25L-Get Smart<br>7B-Peticoat Junction<br>3-Peticoat Junction<br>11-Peticoat Junction<br>4-Hollywood Palace<br>8:00-2B-Mannix<br>25L-Movie, "Winchester 73"<br>5-Mannix<br>3-Carol Burnett<br>11-Mannix<br>8:30-4-Death Valley Days<br>9:00-2B-Gunsmoke<br>4-My Three Sons<br>4-Special, "The Desperate Hours" | 7B-Lawrence Welk<br>5-Jackie Gleason<br>11-Miss Teen International<br>8-7DA<br>9:30-3-Hogan's Heroes<br>8-Judd<br>10:00-2B-Danger Is My Business<br>25L-News<br>3-News, weather, sports<br>5-News, weather, sports<br>11-News, weather, sports<br>10:15-7B-Boxing<br>10:20-25L-Movie, "Tammy and the Bachelor" | 10:30-2B-News<br>7B-News<br>3-Hollywood Palace<br>6-Movie, "Intent to Kill"<br>11-Movie, "The Little Savage"<br>10:40-6-Mannix<br>10:50-2B-Movie, "Shipwreck Island"<br>11:00-4-News<br>11:20-4-Joe Bhop<br>11:40-5-Movie, "Joe Palooka"<br>11:50-25L-Conversation |
|------------------------------------------------------------------------------------------------------------------------------------------------------------------------------------------------------------------------------------------------------------------------------------------------------------------------|--------------------------------------------------------------------------------------------------------------------------------------------------------------------------------------------------------------------------------------------------------------------------------------------------------------------|----------------------------------------------------------------------------------------------------------------------------------------------------------------------------------------------------------------------------------------------------------------------------------------------------------------|--------------------------------------------------------------------------------------------------------------------------------------------------------------------------------------------------------------------------------------------------------------------|

# OPEN HOUSE

## IDAHO'S LARGEST

### SATURDAY - SUNDAY 9 A.M. TO 6 P.M. EACH DAY!



Libby's CANNED GOODS

One full case of Libby's canned goods will be given every hour of our OPEN HOUSE CELEBRATION beginning at 10 a.m. and ending at 5 p.m. on Friday, Saturday and Sunday!

GRAND OPENING SUNDAY AT 5 P.M.

10 cases of Libby's canned goods will be given to some lucky person at this drawing.

WINNER NEED NOT BE PRESENT TO WIN

---

EXTRA SAVINGS  
USED-TRAILERS & CAMPERS  
ALSO MOBILE HOMES

Units that folks have traded in on newer models. All in fine shape and discounted for the three days of our open house.

OVER 90 IN STOCK

---

ATTENTION MOBILE HOME OWNERS!

REGISTER BEFORE 5 P.M. SUNDAY, APRIL '21  
For Two Sets of Deluxe MOBILE HOME STEPS  
Winners Need Not Be Present!

---

CHOOSE FROM THE FINEST...

|                       |                          |                    |
|-----------------------|--------------------------|--------------------|
| MOBILE HOMES          | TRAVEL TRAILERS          | PICKUP CAMPERS     |
| • MARLETTE            | • ROADRUNNERS            | • MEL-MAR • BEAVER |
| • MAGNOLIA • TAMARACK | • ARISTOCRAT • TRAVELEZE | • NAMPA CHIEF      |

ALSO THE WINNEBAGO MOTOR HOMES

---

DICK DeHART and DEAN FENSTERMAKER

# GATEWAY

## TRAILER CENTER

BLAKE AT ADDISON AVE. W. TWIN FALLS





# Women's Section

## Dear Abby

By ABIGAIL VAN BUREN  
DEAR ABBY: I haven't been able to sleep very well lately. You see, I cheated a little on my income tax. (Deductions.) Any suggestions?

DEAR SOL: Send the internal revenue department a check for \$100. And if you can't sleep, send the balance.

DEAR ABBY: I just finished crying my eyes out over something that is not my fault. A very nice boy from school started dating me and I was on cloud nine. I was never popular, and he was like an answer to my prayers. When he just called me up and told me he couldn't date me anymore because his parents have forbidden him to. The reason was they heard that my older sister had a baby out of wedlock. (She did, but Abby, I have never done one thing out of the house why should I have to suffer for something my sister did?) I have even had girl friends tell me they couldn't be around with me anymore because of my sister's reputation. I am not like my sister, and don't see why people should hold this against me. How can I prove that I am a nice girl when I have this against me?  
"MARKED" IN SCRANTON

DEAR MARKED: Don't try to "prove" anything. People who are not willing to judge you on your own record are not worth having as friends.

DEAR ABBY: Some new neighbors moved into our area and we share a 2 party line. Abby, this woman speaks as good English as I, because I have heard her so when she talks on the phone she always speaks a foreign language. I consider this an insult to me. What do you think of a neighbor like this?  
BURNED UP

DEAR BURNED: She's smart. She speaks a foreign language because she suspects that someone may be listening. And she is obviously right.

DEAR ABBY: I would like to say something to "A FATHER," who thinks children ought to be the result of sex. His wife can have a nice quiet dinner after he has put in a hard day's work.

Who may I ask, is going to prepare 2 meals — one for the children and another one, later, for the Lord and Master? The cook? Sorry, we don't have one. And who is going to look after the children while father and mother are enjoying their peaceful meal without children fighting and screaming? The nursemaid? Sorry, we don't have one of those either. Besides, if she are by themselves, Mother will probably have to get up and refer.

Separate meals may work in somebody else's house, but not in ours. We all eat together. It's not always quiet and peaceful, sometimes we all manage to live through it.

OHIO MOTHER  
Everybody has a problem. What's yours? For a personal reply write to Abby, Box 6700, 1000 N. 10th St., and enclose a stamped, self-addressed envelope.

Rebekah Lodge Honors Past Noble Grands  
BUHL — Past noble grands of the Rebekah Lodge, 1008th St., Twin Falls, Idaho, recently held a luncheon at the hotel. Rebekah Lodge met for a regular meeting at the IOOF Hall. Each past noble grand was presented a small anniversary report.

Mrs. Guy Ulrich reported on the "potluck dinner" held recently at the hall. Mrs. Cunningham announced that "Go to Church" Sunday is April 21 at the First Baptist Church. She also announced that the district potluck dinner and program will be held in the William Boyd grand master, will speak.

Mrs. Adolph Machacek, social committee chairman, reminded members that the lodge would serve the FFA banquet. The courtesy committee reported that 15 hospital calls have been made, seven home calls, several cards have been sent and one donated food for a funeral dinner.

Mrs. Carrington presented the Rebekah Lodge at the regular meeting of the IOOF Hall. Each past noble grand was presented a small anniversary report.

Refreshments were served by the hostesses, Lucille Hutton, Mrs. Mayne Kacalek, Mrs. Harvey Dickelhaup and Mrs. Fred Hoelle.



OFFICERS FOR MAGIC Chapter No. 81, Order of Eastern Star. Dorothy Sontag, worthy matron, second from left, and Richard A. Pence, worthy patron, second from right, are congratulated by Mr. and Mrs. Howard Ehrenman, junior past worthy patron and matron, at the recent installation ceremony. The open ceremony was held at the Masonic Temple.

## Magic Chapter Has Installation

In an open installation ceremony held recently at the Masonic Temple, new officers for Magic Chapter No. 81, Order of Eastern Star, were installed. Mrs. Don Sontag was installed worthy matron and Richard A. Pence, worthy patron. Outgoing worthy matron and patron are Mrs. and Mrs. Howard Ehrenman.

Other officers installed include Mrs. Robert Black, associate matron; Mrs. Milton Ballard, secretary; Mrs. James Catterson, treasurer; Mrs. James Jager, conductress; and Mrs. Marjorie Langdon, associate conductress. Mrs. Bonnie Gurley is chaplain; Mrs. Jack Clough, marshal; Mrs. C. R. Fox, organist; Mrs. Richard Zeine, Adah; Mrs. Cecil Brim; Ruth; Mrs. Richard Pence, Esther; Mrs. Marjorie Cannon, Martha; Mrs. Harley Williams, elder; Mrs. William Moran, warder, and James Page, sentinel.

Mrs. Bob Thompson is Bible bearer and the color bearers are Mrs. Stan Detweiler, Mrs. Glen Davis, Mrs. William Cutbirth, Mrs. Truman Massee, Mrs. Charles Smith and Mrs. Aldrich Koeny.

Mrs. William Grange, past matron, was installing officer, assisted by past matron, William Grange as installing marshal and outgoing matron, Mrs. Ehrenman, as chaplain. Mrs. Russell Larsen — was organist.

Lodge Deputy Makes Official Visit To Unit  
HAGERMAN — Mrs. Russell Shaud, Jerome, deputy president for District No. 6, made her official visit to the Hagerman Unit Rebekah Lodge No. 45 recently.

Accompanying Mrs. Shaud were Mrs. Shirley Shropshire, outside guardian in the State Assembly, and four other members of the Jerome Lodge. Mrs. Shaud and other distinguished guests were presented corsages from the lodge. Mrs. Shaud was also presented a gift.

Mrs. Rex McAnally, noble grand, announced tests for the United Nations Pilgrimage were being given to high school students at Hagerman this week. The one receiving the highest grade will then be eligible to compete in the speech division which will be held in Gooding Wednesday.

Mrs. Elwood Grimes presented a message on the organization of the lodge in honor of the lodge's 14th Birthday Anniversary.

It was reported the Past Noble Grands Club will meet May 2 at the home of Mrs. Gaa-Madame. Refreshments were served by Mrs. Alfred Sandy and Mrs. John W. Jones Jr.

Lodge Observes Anniversary  
FAIRFIELD — A eulogy to the 14th Anniversary of the founding of the IOOF Lodge was given by Mrs. Henry Howard at the regular meeting of the excellent Rebekah Lodge No. 59.

It was reported that 15 sick calls have been made since the last meeting. Committees were chosen and plans made for May 9 visit of the state assembly president to the local lodge.

Plans were also made for the visit of Mrs. Betty Shaud, Jerome, district deputy president on Thursday. The local lodge was invited to Post Falls May 4 when State Assembly President Alva McKinley will be honored.

Mrs. Harold Brooks and Mrs. Floyd Clutter were hostesses.

Norman Webb, Harley Williams and Larry Harper. Among the introductions were the parents of the worthy matron, Mr. and Mrs. Kenneth Weldner, Alura, Calif., who came especially for the occasion. The worthy matron also introduced other members of her family as did "the worthy patron."

The outgoing worthy matron and patron were escorted to the altar where they signed the Bible and were presented book markers as mementoes. They also received past matron and patron pins from Mrs. Sontag and Mr. Pence.

The "Codas" from Jerome sang several selections including "No Man Is An Island."

Mr. and Mrs. Mason were chairman of the refreshment committee, assisted by Mr. and Mrs. Black, Mr. and Mrs. Clough, Mr. and Mrs. Jim Stokes, Mr. and Mrs. Floyd Handy, Mr. and Mrs. Gerald Hamilton, Mrs. Marguerite Knall and Mrs. Dzweller.

Mrs. Conrad Is President of Baptist Class  
BUHL — Mrs. Hazel Conrad was elected president of the Philathea Matrons class of the First Baptist Church when class members met at the home of Mrs. Frances Langford.

Other officers elected include Mrs. Mable Ripley, vice president; Mrs. Gertrude Farlinger, secretary and reporter, and Mrs. William Stonemetz, treasurer.

The committee in charge of the rummage sale announced it would be held May 18 in the FFW building. A get-well card was signed by the group to be sent to Ralph Peterson.

Mrs. Floyd Austin was wished birthday greetings from the group. Mrs. Langford presented the program, reading from the fifth chapter of Galatians. She then read an account given by a woman who witnessed the yearly pilgrimage of the Mexican people to Guadalupe to worship at the Shrine of the Holy Virgin. The account was taken from the "Guide Posts" magazine.

The hostess was assisted in serving refreshments by Mrs. Paul Andrew and Mrs. Conrad.

WINNERS NAMED  
HANSEN — The Kimberly-Hansen Bridge Club met at the home of Mrs. Robert Peterson with Mrs. Hugh Sanderson, Mrs. Charles Steinmetz and Mrs. E. E. Daily winning prizes. Mrs. Sanderson, Mrs. Steinmetz, Mrs. Bally and Mrs. Jim Brown were guests. Mrs. Clarence Werner will host the next party.

## Pattern

Marian Martin



9185 SIZES 8-16

FRESHNESS OF ALL  
Freshest of all for summer is the dress with a coat look — it's slim, young and has a floppy back. See it in smooth or ribbed textures.

Pattern 9185: New Sizes 8 (bust 34) to 16 (bust 45) length 45-48. Sixty-five cents in coils for each pattern for first-class mailing and special handling. Send to Marian Martin, Times News 385, Pattern Dept., 222 West 18th St., New York, N. Y. 10011. Print name, address with zip, size and style number.

Choose one pattern free — clip coupon in new Spring-Summer Pattern catalog, 100 styles, all sizes. Send 50 cents.

New Instant Sewing book — shows you how to sew it today, wear it tomorrow. Over 500 pictures. Only \$1.

**MAYFLOWER Offers**  
EXPERT MOVING  
SAFELY STORAGE  
SKILLED PACKING  
MAGIC VALLEY MOVING & STORAGE, INC.  
Twin Falls - Jerome, Idaho  
Agent for AREO MAYFLOWER TRANSIT CO.  
Jerome Twin Falls  
eulp. 343 723-1491  
No fee on estimates calls  
LOCAL & LONG DISTANCE MOVING

## Rebekah Lodge Honors Past Noble Grands

BUHL — Past noble grands of the Rebekah Lodge, 1008th St., Twin Falls, Idaho, recently held a luncheon at the hotel. Rebekah Lodge met for a regular meeting at the IOOF Hall. Each past noble grand was presented a small anniversary report.

Mrs. Guy Ulrich reported on the "potluck dinner" held recently at the hall. Mrs. Cunningham announced that "Go to Church" Sunday is April 21 at the First Baptist Church. She also announced that the district potluck dinner and program will be held in the William Boyd grand master, will speak.

Mrs. Adolph Machacek, social committee chairman, reminded members that the lodge would serve the FFA banquet. The courtesy committee reported that 15 hospital calls have been made, seven home calls, several cards have been sent and one donated food for a funeral dinner.

Mrs. Carrington presented the Rebekah Lodge at the regular meeting of the IOOF Hall. Each past noble grand was presented a small anniversary report.

Refreshments were served by the hostesses, Lucille Hutton, Mrs. Mayne Kacalek, Mrs. Harvey Dickelhaup and Mrs. Fred Hoelle.

IT IS TRUE!  
A PENNY SAVED IS A PENNY EARNED

BUT YOU CAN EARN 1/2% INTEREST WHILE YOU SAVE

Investing Your Money in Bethel Homes - Nursing Home Bonds

To start your earnings call Lloyd DaWitt Phone 733-2952 Twin Falls or return this coupon

For further information, please clip this coupon and mail to: Mr. Lloyd DaWitt, 453 6th Ave. E., Twin Falls or Phone 733-2952 or 733-6391

NAME \_\_\_\_\_ TELEPHONE \_\_\_\_\_ ADDRESS \_\_\_\_\_

GET "MOORE" FOR YOUR MONEY  
Moore's House I Int  
Benjamin Moore paints  
VOLCO BUILDERS SUPPLY  
TWIN FALLS JEROME BURLEY  
On Your Home There is No Substitute For Quality



LYNN PETTINGILL Will tell you about the miracle of water

Phone 733-1027

The annual Mother's Day Luncheon will be held May 7. Members will make gifts at the next meeting. A lesson and demonstration on "Add Spice to Your Life" was presented by Mrs. Eslinger and Mrs. Johnson.

Pinched for space at your house?

See First Federal about a HOME LOAN

When you're ready for a bigger home to relieve the indoor congestion at your house... one of our home loan officers can give you some helpful suggestions on how to plan and finance your move.

THE HOME LOAN SPECIALISTS

4 3/4% COMPOUNDED TWICE A YEAR!

FIRST FEDERAL SAVINGS

200 BROADWAY STREET BOSTON 4 MASSACHUSETTS 02108

# Picture Of The Year Showing At Motor-Vu Drive-In Theater

"In the Heat of the Night," which garnered the best actor Oscar for Rod Steiger and also captured the Oscar for the best picture is currently showing at the Motor-Vu in Twin Falls. The film has been commended because of its race relations theme. Steiger plays opposite newly-awarded winner Sidney Poitier in this story conceived by writer John Ball as early as 1952.

It wasn't until 30 years later that "In the Heat of the Night" was published. Poitier plays the role of a Negro detective, a part that Ball realized was ahead of its time when he first thought of it.

The character Steiger portrays is a bigoted small-town

police chief who arrests Poitier, and later must work with him when it is learned he is a police officer.

Academy awards have been in the grasp of Steiger before. He received the best supporting actor nomination for his role in "On the Waterfront" in 1954. "In the Heat of the Night" screenplay, based on Ball's controversial novel.

The film co-stars Warren Oats and Lee Grant.

"In the Heat of the Night" was shot on location in Tennessee and in Sparta, Ill.

Director Norman Jewison scouted about 200 small towns before he finally decided on Sparta to do the filming.

In the original script, the town was called "Wells," but rather than repaint store fronts, windows and town signs, the script was changed to read "Sparta."

"Locations," explains Jewison, "give a motion picture realism." In order to establish the southern look, many scenes were shot in the cotton-raising country of Dyersburg, Tenn. Although 75 film-makers spent 10 weeks on location and left at least half a million dollars behind.

Corn and cotton are "line money-makers in that part of the country," producer Walter Mirisch commented, "but for a cash crop it's hard to beat a Hollywood company."



SPECIAL EDUCATION STUDENTS who will be among those exhibiting creative art Friday through Tuesday at the YMCA are, from left, Dick Miller, Lillian Kollacker and Korea Clark, all Twin Falls. Sixty pictures, chosen from about 200 done by special education students, will be included in the display, including several from Twin Falls and Durley. The display, featuring art work by students 18 to 23 years old, has been shown elsewhere throughout the state. Besides the recreation aspect, creative art is one way special education instructors have of evaluating their students.

## Farm Labor Camp Assured For Elmore, Owyhee Area

GLENN'S FERRY — A farm, labor-housing project will improve migrant labor housing, conditions and help assure growing the Elmore-Owyhee area. The Elmore-Owyhee Administration has approved a \$298,630 insured loan to the Elmore-Owyhee Farm Labor Housing Association.

George M. Klein, FHA state director, said the funds will be used for the construction of housing for farm laborers who work in the Elmore and Eastern Owyhee areas.

"A total of 41 units consisting of housing some 300 people will be constructed at two sites, one at Glenn's Ferry, where there are five buildings with 10 units each will be built. Each unit contains 520 square feet, and is composed of three rooms.

Equipment will include kitchen facilities, hot water and toilet facilities, including showers.

## Soldier Killed

MOUNTAIN HOME (AP)—A 22-year-old Mountain Home man has been killed in action in Vietnam, the Defense Department announced Thursday.

U.S. Navy Hospital Corpsman Jim G. McManis, the son of Mrs. Dorothy C. Brady, Mountain Home, died from fragmentation wounds from enemy fire while serving with the third marine division.

McManis was a Mountain Home High School graduate.

## MAJOR PROBLEM

SALT LAKE CITY (AP)—Unlawful sale of drugs and narcotics has become a major problem in Salt Lake City, Police Chief Dewey Willis told a civic club Thursday.

## Damage Rises

NEW YORK (AP)—The American Insurance Association reported Thursday that estimates of insured property damage in the widespread disorders that followed the assassination of Dr. Martin Luther King Jr. had risen to \$31 million.

Last week, the association made an estimate of \$25 million on the losses in about 100 cities hit by racial disorders.

Property damage not covered by insurance is not included in the association's figures.

## News Of Servicemen

Army Pfc. L. Lauritsen, whose mother, Mrs. Rita Gray, lives on Route 1, Twin Falls, was assigned April 8 to the 172d Airborne Brigade near An Khe, Vietnam. His father, Earl S. Lauritsen, lives at 4817 Delbridge Way, Seattle, Wash.

Army Pfc. Jon A. Buttane, son of Mrs. Clara Buttane, 913 G St., Rupert, was assigned as a military policeman with the 50th Military Police Battalion near Nha Trang, Vietnam, recently. His wife, Susan, lives in Wendell.

# Record-Shattering Performance By U.S. Economy Has Experts Worried

By JOSEPH R. COYNE  
WASHINGTON (AP)—A record-shattering performance by the nation's economy so far this year has government experts worried about inflation and how to sustain the boom.

They see the record as proof of the need for higher taxes.

The expansion, now in its eighth year, featured a record report in consumer spending and rising industrial production during the first quarter of this year but it also produced an inflation rate of four per cent annually.

"Absolutely unsustainable" was the way one analyst described the record dollar advance of \$20 billion in the nation during the first three months of the year.

Officials look for a smaller but still hefty increase—perhaps \$17 billion or \$18 billion—during the current quarter.

The Commerce Department reported the record performance Monday in estimating the value of all goods and services produced in the economy—the Gross National Product—at an annual rate of \$277.7 billion during the first quarter.

The GNP is the most comprehensive yardstick of economic activity and government economists consider the performance

billion was in actual economic growth.

The previous record quarterly advance was \$18.4 billion during the height of the Vietnam war buildup in late 1955.

## Western Film Shot In Utah

"Bluc," a story and a man out from the western vein, will have its world premiere Monday at Salt Lake City, and will open Wednesday at the Motor-Vu in Twin Falls.

The film was shot on location in Moab, Utah, although the actual story setting is the Texas plains near the Mexican border. The time is 1850 and the man, "Bluc," faces problems time honored in western lore. He is torn between two societies, the one of his birth, and a new one of his death.

"Bluc" stars Terence Stamp, Joanna Pettit, Ricardo Montalban and Karl Malden.

The movie also features many typical Mexican border bandits, complete with two saddle rifles, four revolvers and a collection of knives and other awesome looking weapons.

Some officials say they are convinced the mood of Congress has changed and a tax increase is definitely in the works for this year. Prospects for an effective date prior to July 1 appear unrealistic, however, Congress has been considering since last summer President Johnson's proposal for a 10 per cent income tax surcharge.

Inflation is up \$5 billion of the \$20 billion first-quarter economic advance. The other \$12

SET THAT DIAL on 1450 Listen to **KEEP** 1450 KC ON YOUR RADIO DIAL

## DIAMOND JIM'S

In Jackpot, Nevada  
**TOMMY GIBSON**  
and his  
**SINGING GUITAR**  
RESTAURANT OPEN

**COUPON**

### FREE MONEY

Coupon Good thru April 18, Sundays excepted.

### 10 Free Nickels

1 Coupon Per Day Per Person Over 21

### FREE DINNER

SUNDAY, APRIL 21

Served 12 noon to 4 p.m. Adults only.

USE TIMES-NEWS WANT ADS FOR FAST-SELLING RESULTS

**MON-GLO DRIVE-IN**  
IN BUHL  
FRI. - SAT. - SUN.  
Double Feature Program

**James COBURN**  
BLAND EDWARDS  
**WaterHole #3**

Who's a little bullet between friends?

**DAVID JANSEN**  
has got to know in  
**WARNING SHOT**  
TECHNOLOGY • A PARAMOUNT PICTURE

NEXT ATTRACTION:  
"BLUE" and ELVIS in "EASY COME, EASY GO"

**2nd FANTASTIC WEEK!**

Man... hunted... caged... forced to mate by civilized apes!

20TH CENTURY-FOX PRESENTS  
**CHARLTON HESTON**  
STIMULATED BY JACQUES COUSTAU  
**PLANET OF THE APES**

RODDY McDOWALL • MAURICE EVANS • KIM HUNTER  
JAMES WHITMORE • JAMES DAILY • LINDA HARRISON

**ORPHEUM**  
Eve, Daily 7 and 9:25 p.m.  
Mo., Sat., Sun. 7:15 & 4:40 p.m.  
16th MAIN AVE. • 733-5279  
ADULTS... \$1.50  
After 5 p.m. 1.75  
Child... 50c

**MOTOR-VU DRIVE-IN**  
PHONE 733-6276  
East on U.S. 30 to Eastland Drive  
At 7:45 - 11:00 Nightly

**WINNER OF 5 ACADEMY AWARDS**  
**BEST ACTOR, ROD STEIGER**

and The Winner of The Biggest and BEST PICTURE OF THE YEAR!!  
Also Winner of "3" Other Awards!

THE MIRISCH CORPORATION presents  
**"SIDNEY POITIER" - "ROD STEIGER's"**  
is good in "Guess Who's Coming To Dinner", better in "To Sir With Love", best of all in "In The Heat Of The Night!" — TIME MAGAZINE

brilliant portrayal is a wonderful piece of acting—humorous, shrewd, strong without being domineering or self-admiring! — LIFE MAGAZINE

THE NORMAN JEWISON  
WALTER MIRISCH PRODUCTION  
**"IN THE HEAT OF THE NIGHT"**

It's a Plot to Make the World Die Laughing!  
A MERRY COMPANY  
**"THE RUSSIANS ARE COMING THE RUSSIANS ARE COMING"**  
DAN RALPH PRODUCTION

Plus Co-Hit Comedy... At 9:30 Nightly

**THIS WEEK END AT THE DRIVE IN**

Theatres

Adults... \$1.25  
Students... \$1.00

KIDS Always FREE

Free Playground at Motor-Vu

**GRAND-VU DRIVE-IN**  
PHONE 733-5928  
West on U.S. 30 to Grandview Drive

STARTS TONIGHT (Plays Fri.-Sat.-Sun.) First Run...  
Gates Open 7:15 p.m.

**FORCE MORE POWERFUL THAN 1,000 H-BOMBS UNLEASHED TO DEVASTATE EARTH!.. World in Panic! Cities in Flames!**

**FIVE MILLION YEARS TO EARTH**  
COLOR BY DELUXE

Plus  
**THE WIKING QUEEN**  
COLOR BY DELUXE

TIMES "Earth" at 7:45 - 10:30 "Wiking" at 9:20 only "W" ALL COLOR HITS!!

**EVERYBODY CRACKS UP...**  
when the Jolliest Roger of them all pops into the 20th century!

PETER USTINOV  
DEAN JONES  
WALT DISNEY presents  
**BLACKBEARD'S GHOST**  
HILARIOUS COMEDY "ENTER LAUGHING"

**IDAHO**  
16th Broadway • 722-1278

—FRIDAY SHOWINGS—  
"Blackbeard": 6:30 & 10:10 p.m.  
"Laughing": 8:15 p.m.

—SAT. & SUN. SHOWINGS—  
"Blackbeard": 2:55 & 9:50 p.m.  
"Laughing": 3:55 & 7:45 p.m.

### Burley BPA Technician Is Honored For Extra Work

BURLEY — James H. Isaak, hydraulic engineer technician at the Burley office of the Bonneville Power Administration, has been given a \$200 check and special recognition for "extraordinary performance—under trying conditions."

A fellow employee, George E. (Pat) O'Brien, was presented a letter of commendation on completion of 20 years of government service. Both men were honored at a ceremony held in the BPA office on West Main Street here, Lee Biswell, Portland, head of the power section, made the awards.

Mr. Isaak's job entails scheduling energy deliveries to utilities and customers from the U.S. Bureau of Reclamation plants in southern Idaho, determining plant generating to meet current loads and estimating future loads.

His work load normally is shared with Mr. O'Brien, but during the past year Mr. Isaak has done his own duties as well as the major portion of the work normally done by Mr. O'Brien, who was ill.

To accomplish this, the Portland BPA official pointed out, Mr. Isaak voluntarily worked during his lunch hour, consistently came to work early and when required, worked beyond his normal hours to get the job done.

"The pressure of accomplishing this job and solving the routine problems of day-to-day operation was greater than Mr. Isaak normally would have been expected to handle," Mr. Biswell said, "but throughout this entire period of stress, Mr. Isaak showed great forbearance and maintained good relations with customers and the quality of his work remained excellent."

A native of American Falls, Mr. Isaak has lived most of his life in this area. He and his wife, the former Jean Johnson, have three children, all students at Minico High School. He began work for the Bureau of Reclamation in 1949, transferring to BPA in 1963, in Burley.

Mr. O'Brien was promoted on completion of 20 years of service. He was born in Kemmerer, Wyo., and moved to the Burley area in November, transferring to BPA in Sept. 1, 1963.



**HAROLD BIBBY** will address an instant travel clinic open to all area persons interested in the travel industry. Mr. Bibby, a representative of Eastman Kodak Co., will be featured speaker at the 1 p.m. Thursday meeting at the Holiday Inn, it is sponsored by the Idaho Department of Commerce.

**Council To Meet**  
GLENN FERRY — The Elmore County 4-H Council will meet at 8 p.m. Monday in the Koffler Kup Cafe, Hammett, and all leaders and junior leaders are requested to attend. Plans for the Club Congress in Moscow in June will be discussed.

**Report Given To Richfield Club**  
RICHFIELD — A report on the big game census of Pictacho Hills and Magic Dam was given by Larry Keeney, conservation officer, at the Richfield Rod and Gun Club dinner meeting Monday night.

He reported 800 deer in the Pictacho area and 201 in Magic area, as well as eight antelope. This is up 33 per cent over a longtime average.

A Magic Valley fisheries film was shown by Keeney with various types of game fish—bighead, bluegill, bass, crappie, and shiners. Members attending included Jerry Clayton and Quinn.

Election is scheduled for the May 20 meeting.

## EUROPE AS YOU WANT IT!

Whether you go "ON YOUR OWN" or select the perfect tour for your budget and countries desired, we can help you with all the latest services.

### Magic Carpet Travels

STEAMSHIPS AIRLINES CRUISES TOURS AT NO EXTRA COST  
230 Shoshone St. E., Twin Falls 733-1668

### News Of Record

**LINCOLN COUNTY** — R. A. Warburton, charged with the late Murray O. Sellers, was set for May 2, Probate Court. Clerk's Office.

Warranty deeds were filed by Shuzui Nakata to Arthur C. Beddard and Arthur C. Beddard to Virginia Beddard, U. S. Patents to Henry Aschenbrenner and heirs of Caroline Aschenbrenner, Probate court to L. J. Most estate, decedent of distribution.

**ELMORE COUNTY** — Glenn Ferry Police Board, Pocatello, \$20, Gary W. Smith, 16, Glenn Ferry, \$10 each for insufficient brakes and failure to report a one-car accident. Fines, \$300 person to operate vehicle.

**JEROME COUNTY** — Jerome Police Court, DeVert King, Twin Falls, failure to display plates, \$25, equipment, Bill-Nedrich \$5, failure to register, M. R. Holland, Twin Falls, overwidth load, Don St. Jerome, \$5, failure to register, Marvin Pierce Jr., Jerome, defective muffler, — Ran Board, Pocatello, \$20, motorcycle without license, and Jackie DeBus, \$10, allowing one-car accident. Fines, \$300 person to operate vehicle.



**SAFETY AWARD** for outstanding safety achievement in accident prevention during 1967 is being presented to Robert Erkins, center, owner and operator of Snake River Trout Farm by Dan Obenehain, right, Twin Falls agent for Industrial Indemnity Co. Looking on is Don Elliot, Boise, division manager for Industrial Indemnity. The firm awarded the award to the trout farm for no lost time injuries on the job during 1967.

**Idaho Man Gets Safety Medal**  
CHICAGO (AP) — An Idaho man, Edward Bronson, Shelley, has been awarded a life-saving medal, the National Safety Council reported Friday. The council said Bronson was

visiting the farm of a neighbor, Mrs. Lelia L. Grange, in August, 1967, when Mrs. Grange's 10-month-old son caught himself in the metal webbing of a chair lounge.

The boy was unconscious, the council said, and Bronson used mouth-to-mouth resuscitation to revive him.

**APPEALS COURT RULES**  
WASHINGTON (AP) — The U. S. Court of Appeals has ruled the government can fire a worker for exercising free speech when it will lead to chaotic conditions in the government.

USE TIMES-NEWS WANT ADS FOR FAST-SELLING RESULTS

**SOFT AS A KISS**

**INVER HOUSE** IMPORTED RARE SCOTCH WHISKY

THEY BLEND SCOTCH WHISKY FROM WHISKIES BY THESE THREE SCOTCH

# \$200 — \$300 — \$300

## "Pot of Gold" Sunday, April 21



The **MATYS BROTHERS**  
They will be remembered for past performances for keeping everybody royally entertained.

**HILARIOUS COMEDY**  
Combined with  
**GREAT MUSIC AND SHOWMANSHIP TALENT**  
Now Playing in the Gala Room  
**CACTUS PETE'S**

**Cactus Pete's**  
and the  
**Horse Shu Club**  
The "Fun Spots South of the Border"

**DRAWINGS AT**

|                   |                |
|-------------------|----------------|
| 12 Noon to 2 p.m. | .... \$100 pot |
| 2 p.m. to 4 p.m.  | .... \$100 pot |
| 4 p.m. to 6 p.m.  | .... \$100 pot |
| 6 p.m. to 8 p.m.  | .... \$100 pot |
| 8 p.m. to 10 p.m. | .... \$100 pot |

All drawings on Series 1 Cactus Pete's Membership card . . . Nothing to buy . . . any person over 21 years of age may obtain membership cards at Cactus Pete's.

Starting at 10 p.m.  
**\$200 - \$300 - \$300**  
You May Win at Either  
Cactus Pete's or Horse Shu

**CACTUS PETE'S BUFFETS**

|                            |                              |
|----------------------------|------------------------------|
| Seafood Every-Friday-Night | Roast Baron of Beef Saturday |
|----------------------------|------------------------------|

Open fresh seafood; flower in and prepared by master chef. Complete assortment of appetizers and salads.

All you can eat just . . . **\$2.95**

Every Saturday evening in the Gala Room, choice prime beef cooked to perfection and served just the way you like it. Dozens of salads from which to choose.

All you can eat just . . . **\$2.95**

**SOUTHERN FRIED CHICKEN DINNER**  
Served Family Style in the Gala Room  
**ALL YOU CAN EAT SUNDAY \$1**



**DOUG & DONI**  
Refreshing Talent at the Gala Bar

**Coming Attractions**  
JIMMY WAKELY—April 30 to May  
LEONZO & OSCAR—May 14 to 19  
EDGAR BERGON & CHARLIE M  
CARTHY—May 28 to June 2

# T. F. YWCA To Observe Week

Sunday holds a special meaning for members of the Young Women's Christian Association. Commemorating the opening of National YWCA Week, the day will be observed by attendance at church services across the United States. Here, YWCA members will go to churches individually and in groups. Mrs. Martin, executive director, announced.



WARD H. MAGLEBY

Several churches will give special recognition to YWCA and its services to the community.

### T.F. Exchange Club Inducts Two Members

Two new members of the Twin Falls Exchange Club were inducted during a meeting earlier this week.

The club's executive committee, which was headed by Mrs. M. J. Pennington, inducted Mrs. M. J. Pennington and Mrs. M. J. Pennington.

## LDS Official To Meet With CSI Students

Ward H. Magleby, director of public relations and liaison of Religion for the LDS Church, and national secretary of the Church of Christ in America, will meet with CSI students.

## Closes Down Big Young Men

George Washington Hopkins, publisher of the Big Young Men Examiner, has announced the closing of the publication.

## Students Are Honored At Kimberly

An annual student recognition banquet, sponsored by the Kimberly Chamber of Commerce, was held Tuesday night.

## Richfield Youths Elect Officers

Richfield students on the Christian Fellowship at Exposition 67 in Montreal are scheduled for the Richfield Homecoming Youth Fellowship coming sessions.

## Students Give Club Program

SIOSHONE—A program from the local school group was presented for the Rotary club Wednesday noon.

## Cassia Lists Judges For Elections

BURLEY—Cassia County Commissioners have appointed judges for the Aug. 6 Primary Election and general election.

## Annual Easter Seal Center Program Set

The eighth annual Twin Falls Easter Seal Center program will be held at 4:30 p.m. Sunday on Channel 11, KMYT.

## Directory Of Churches, Services

- CHURCH OF THE RESURRECTION**  
401 1/2 North W. W. W. Rev. W. W. W.  
Sunday service: 10:30 a.m. Wednesday 7 p.m.
- WESTLAWN HOLINESS**  
701 1/2 North W. W. W. Rev. W. W. W.  
Sunday service: 10:30 a.m. Wednesday 7 p.m.
- FIRE WARD**  
Airport Road, Twin Falls, Rev. Lewis  
Sunday service: 10:30 a.m. Wednesday 7 p.m.
- 12th FIFTH WARD**  
Main Street, N. W. W. Rev. W. W. W.  
Sunday service: 10:30 a.m. Wednesday 7 p.m.
- 13th SECOND WARD**  
131 North Ave. N. Bishop T. Gilbert  
Sunday service: 10:30 a.m. Wednesday 7 p.m.
- 14th THIRD WARD**  
141 North Ave. N. Bishop T. Gilbert  
Sunday service: 10:30 a.m. Wednesday 7 p.m.
- VICTORY METHODIST BAPTIST**  
Victory Ave. N. W. W. Rev. W. W. W.  
Sunday service: 10:30 a.m. Wednesday 7 p.m.
- BORGANIZED LDS**  
415 Elmwood Blvd. N. W. W. Rev. W. W. W.  
Sunday service: 10:30 a.m. Wednesday 7 p.m.
- LYNNWOOD CHAPEL**  
Lynnwood Ave. N. W. W. Rev. W. W. W.  
Sunday service: 10:30 a.m. Wednesday 7 p.m.
- CHURCH BAPTIST**  
211 Fourth Ave. N. W. W. Rev. W. W. W.  
Sunday service: 10:30 a.m. Wednesday 7 p.m.
- FATHER ASSEMBLY OF GOD**  
Father Assembly, 111 N. W. W. Rev. W. W. W.  
Sunday service: 10:30 a.m. Wednesday 7 p.m.
- LDS FOURTH WARD**  
211 Fourth Ave. N. W. W. Rev. W. W. W.  
Sunday service: 10:30 a.m. Wednesday 7 p.m.
- FIRST METHODIST CHURCH**  
211 Fourth Ave. N. W. W. Rev. W. W. W.  
Sunday service: 10:30 a.m. Wednesday 7 p.m.
- BETHLEHEM EPISCOPAL**  
Bethlehem, 111 N. W. W. Rev. W. W. W.  
Sunday service: 10:30 a.m. Wednesday 7 p.m.
- UNITED METHODIST**  
415 Elmwood Blvd. N. W. W. Rev. W. W. W.  
Sunday service: 10:30 a.m. Wednesday 7 p.m.
- LDS EIGHTH WARD**  
815 Elmwood Blvd. N. W. W. Rev. W. W. W.  
Sunday service: 10:30 a.m. Wednesday 7 p.m.
- THE SALVATION ARMY**  
211 Second Ave. N. W. W. Rev. W. W. W.  
Sunday service: 10:30 a.m. Wednesday 7 p.m.

# Hymn Poll Set

What's your favorite hymn? If you've never thought about that question, you might want to think about it now, because Twin Falls Seventh-Day Adventists Saturday afternoon will poll residents to discover which religious songs they would rather sing.

## Cassia Lists Judges For Elections

BURLEY—Cassia County Commissioners have appointed judges for the Aug. 6 Primary Election and general election.

## Annual Easter Seal Center Program Set

The eighth annual Twin Falls Easter Seal Center program will be held at 4:30 p.m. Sunday on Channel 11, KMYT.

## Gets Scholarship

EDENHAZLETION—Olano Meyerhoff, daughter of Mr. and Mrs. Ray Meyerhoff, Eden, has received the 1968 University of Idaho Honor Award for graduating high school seniors.

## Students Give Club Program

SIOSHONE—A program from the local school group was presented for the Rotary club Wednesday noon.

# TV Newsman Believes Live Coverage Of Rioting Gives Inaccurate Picture

By STERLING F. GREEN WASHINGTON (AP)—A television news executive says he believes live coverage of racial disorders gives viewers an inaccurate picture—but that position is being taken in the head office. The decisions are made by the network.

## Annual Easter Seal Center Program Set

The eighth annual Twin Falls Easter Seal Center program will be held at 4:30 p.m. Sunday on Channel 11, KMYT.

## Gets Scholarship

EDENHAZLETION—Olano Meyerhoff, daughter of Mr. and Mrs. Ray Meyerhoff, Eden, has received the 1968 University of Idaho Honor Award for graduating high school seniors.

## Students Give Club Program

SIOSHONE—A program from the local school group was presented for the Rotary club Wednesday noon.

## Why Pay More Than You Have To? FACTORY-DIRECT PRICES

SAVE YOU MORE MONEY ON ALL Hotpoint APPLIANCES

Double Door Freezer & REFRIGERATOR

REG. \$279.95

**\$199.95** w/t

Installation Set

EDENHAZLETION—Valley TFA offers for purchase of a new one-year-for-the-county-warranty. The Old Bugly Inc. and George Melland, doing business at Shirley Municipal Golf course.

MONDAY 6:30 P.M. STATION KTFI 1270 KC

SELF CLEANING ELECTRIC RANGE

Platform Light, Large Oven, Infinite Heat, Automatic

NOW ONLY **\$274.95** w/t

1967 Model Washers

Reg. \$349 Only 2 to Sell **\$249**

MOBILE DISHWASHERS

Do your finest china and glassware safely. Several models.

AS LOW AS **\$1400**

Colorful Carpeting

10-Year Wear Guarantee Exceeds FHA Requirements

• Choice from several colors

• Easy-to-clean Nylon

SPECIALLY PRICED **\$95** Sq. Yd.

ONLY **\$95** Sq. Yd.

CLAUDE BROWN'S OVER 80 ROLLS FOR YOUR SELECTION

Why buy from small sample swatches—buy from the roll and you can see what your rug will look like in your home.

CARPET IS OUR SPECIALTY

**Claude BROWN'S** Twin Falls

143 Main Ave. E.



Stocks

3:30 P.M. SUMMARY NEW YORK (AP)—The stock market today following a warning from Chairman William McNichols of the Federal Reserve Board...

3 P.M. QUOTATIONS

Table of stock market quotations including NYSE, AMEX, and various industry indices.

Dow-Jones, 2p.m.

Table of Dow Jones Industrial Average components and their prices.

Livestock

Table of livestock market prices including cattle, hogs, and sheep.

Grain

Table of grain market prices including wheat, corn, and soybeans.

Business Mirror

By JOHN CUNIFF AP Business Analyst NEW YORK (AP)—The definition of hospitality remains the same in any man's language...

Adult Driver Education Course Set

JEROME — An adult driver education course has been announced by Jerome School District No. 61.

Butter and Eggs

CHICAGO (AP)—Butter held steady; wholesale buying prices unchanged; 80 percent...

Successful Investing

By ROGER E. SPEAR Q. My wife and I, now in our 60s, hold a list of stocks...

Over the Counter

Quotation from NASD at approximately 10 a.m. All bids are in dollars.

Extradition To Oregon Faces Woman In T.F.

Twain Falls, N.J. — Mrs. E. J. K. m. an Andrews, charged with transporting a stolen car...

Thinking about a Business Career?

Advertisement for Twin Falls Business College featuring a man in a suit and text about business education.

Twin Falls Markets

Table of local market prices for various goods.

# Overlie And Bright Pace Hagerman on Northside Conference Track Crown

**GOODING** — Tom Overlie and A. Gooding Stars didn't score. Eddie Bright brought nearly a fourth of the scoring Thursday afternoon and paced the Hagerman team to the Northside Conference Track and Field championship. Overlie won both hurdles and ran on a winning relay team while Bright came up with a first and third second place finishes. Their efforts helped the Pirates pile up 100 1/2 points and left runner-up Carey well back with 56.

## Two Games

The Twin Falls Bruins will play Minto and Caldwell in a pair of baseball games Friday and Saturday at Jayce Park.

## Yanks' Homer Power Beats Angels 6-1

**ANAHEIM, Calif. (AP)** — Mickey Mantle and Roy White thrashed the Los Angeles Angels to give the New York Yankees a sweep of a two-game series played outside diamond at the same time.

## Wendell Girls Sweep To Track Win

**WENDELL** — The Wendell girls scored six of 11 events and scored heavily in all of them Thursday afternoon to win a tri-county track meet.

## Three Share Opening Lead At Las Vegas

**LAS VEGAS, Nev. (AP)** — Two veteran golfers, Gardner Dickenson and Dan Sikes, and young "Carmel" McCormick shared three strokes off par with 65's Thursday to lead the way in the first round of the \$150,000 Tournament of Champions.

## Murphy Sets Mark In Relays

**LAWRENCE, Kan. (AP)** — Al Force LL Jim Murphy won the 10,000 meters impressively Thursday, setting a new record of 29:49 in the first major event of the 4rd Kansas Relays.

## Blues Gain NHL Playoff Spot

**PHILADELPHIA** (AP) — A fluke goal in the second period helped the Philadelphia Flyers to a 3-1 victory over the St. Louis Blues Thursday night in the National Hockey League West Division semifinal playoffs.

## Want to Rent Something?

Use Classifieds  
70 through 89

## Summary

**Team scoring** — Hagerman 95, Carey 40, Gooding 35, Overlie 30, Bright 25, Grand View 11, Camas 10.

## Sox Add To Chicago Woes With 3-0 Win

**BOSTON (AP)** — Jose Santisteban pitched a one-hitter and scored the first run of the game on a balk by Gary Peters Thursday night as the Boston Red Sox defeated the Chicago White Sox 3-0.

## Mays Drives Giants Past Mets By 5-3

**NEW YORK (AP)** — Willie Mays drove in three runs and scored the first run in the seventh inning Thursday, as the San Francisco Giants defeated the New York Mets 5-3.

## ISU Moves Home Games To I.F.

**POCATELLO (AP)** — Idaho State University's baseball team will play a doubleheader with Boise College at Idaho Falls 11 Monday afternoon, Coach Babe Caccia announced.

## SEED CORN

Have you ever planted DeKalb Seed Corn? If not, you're missing out on one of the best things in agriculture. DeKalb Corn is bred to germinate strongly, stand, and produce big yields of high quality grain. Raise DeKalb.

## Feed & Ice

Open Hours 24 Days A Week  
135 5th Ave. So. 733-1297

# Baltimore Signs Unsettled; NBA Wins Another Recruiting War

**BALTIMORE (AP)** — A basketball organization in this advertisement saying they offered \$500,000 for the services of a player named Jerry West.

## Filer Cops Crown In Jerome Invitational

**JEROME** — Filer's extra bit of depth paid off with the championship of the Mountain Home's Jerome Invitational track meet Thursday, the Wildcats winning a light battle that saw five one-half points cover the first four teams.

## Sox Add To Chicago Woes With 3-0 Win

**BOSTON (AP)** — Jose Santisteban pitched a one-hitter and scored the first run of the game on a balk by Gary Peters Thursday night as the Boston Red Sox defeated the Chicago White Sox 3-0.

## ISU Moves Home Games To I.F.

**POCATELLO (AP)** — Idaho State University's baseball team will play a doubleheader with Boise College at Idaho Falls 11 Monday afternoon, Coach Babe Caccia announced.

## Celtic-76er Showdown Set Tonight

**PHILADELPHIA (AP)** — The Boston Celtics have written more than their share of headlines by clinching the first berth in the National Basketball Association try to add another player Friday night.

## ISU Moves Home Games To I.F.

**POCATELLO (AP)** — Idaho State University's baseball team will play a doubleheader with Boise College at Idaho Falls 11 Monday afternoon, Coach Babe Caccia announced.

## SEED CORN

Have you ever planted DeKalb Seed Corn? If not, you're missing out on one of the best things in agriculture. DeKalb Corn is bred to germinate strongly, stand, and produce big yields of high quality grain. Raise DeKalb.

## Feed & Ice

Open Hours 24 Days A Week  
135 5th Ave. So. 733-1297

# Record Field Is Expected For Pointer Trials

The biggest field trial in the brief history of the German Shorthaired Pointer Club will be held Saturday and Sunday.

## Alou Hits 2 Homers For Braves' Win

**ATLANTA (AP)** — Felipe Alou's second home run of the game gave Atlanta a 5-3 comeback victory over the Chicago Cubs Thursday night.

## Grider Dies

**TULSA, Okla. (AP)** — University of Tulsa football player who collapsed after a wind sprint Wednesday died Friday.

## Pittsburgh Cops Win In ABA Play

**PITTSBURGH (AP)** — Connie Hawkins scored 39 points to lead Pittsburgh to a 107-91 victory over New Orleans Thursday night in the opener of the American Basketball Association's best-of-7 championship series.

## JIM BEAM BOURBON

**MAKING NEWS SINCE 1795**  
CLERMONT, Ky. — 173 years ago Jacob Beam started making Beam Bourbon here in Kentucky. It is still being made here today. And still by the Beams.

## REMEMBER WHEN?

**EVENTS IN TWIN FALLS 50 and 30 YEARS AGO**  
As recorded in "The Twin Falls Times" of 1918 and 1968.

## 50 YEARS AGO

The annual church of opays of May in Twin Falls cemetery for the year 1918 is due and open May 11. The amount is \$2.50 for each lot.

## 30 YEARS AGO

Believers of a storm of mild criticism and praise, because of the magazine's attempt of pictures and narrative from the film "The Birth of a Nation" was published in the Twin Falls today. People approving and also people condemning.

## BOB REESE MOTOR CO.

500 Block, 2nd Avenue South, Twin Falls, Idaho  
DOUGLASS — CHRYSLER — IMPERIAL — STUDEBAKER

# Record Field Is Expected For Pointer Trials

The biggest field trial in the brief history of the German Shorthaired Pointer Club will be held Saturday and Sunday.

## Alou Hits 2 Homers For Braves' Win

**ATLANTA (AP)** — Felipe Alou's second home run of the game gave Atlanta a 5-3 comeback victory over the Chicago Cubs Thursday night.

## Grider Dies

**TULSA, Okla. (AP)** — University of Tulsa football player who collapsed after a wind sprint Wednesday died Friday.

## Pittsburgh Cops Win In ABA Play

**PITTSBURGH (AP)** — Connie Hawkins scored 39 points to lead Pittsburgh to a 107-91 victory over New Orleans Thursday night in the opener of the American Basketball Association's best-of-7 championship series.

## JIM BEAM BOURBON

**MAKING NEWS SINCE 1795**  
CLERMONT, Ky. — 173 years ago Jacob Beam started making Beam Bourbon here in Kentucky. It is still being made here today. And still by the Beams.

## REMEMBER WHEN?

**EVENTS IN TWIN FALLS 50 and 30 YEARS AGO**  
As recorded in "The Twin Falls Times" of 1918 and 1968.

## 50 YEARS AGO

The annual church of opays of May in Twin Falls cemetery for the year 1918 is due and open May 11. The amount is \$2.50 for each lot.

## 30 YEARS AGO

Believers of a storm of mild criticism and praise, because of the magazine's attempt of pictures and narrative from the film "The Birth of a Nation" was published in the Twin Falls today. People approving and also people condemning.

## BOB REESE MOTOR CO.

500 Block, 2nd Avenue South, Twin Falls, Idaho  
DOUGLASS — CHRYSLER — IMPERIAL — STUDEBAKER

# Expansion Of National Loop Is Topic At Meeting

CHICAGO (AP)—The National League's expansion drive at a meeting of club owners Friday... It could be a lively session depending on deliberations Thursday in a preliminary session...

# Wood River Wins Its Own Invitational

HAYLEY — The Wood River Waterfowlers, getting four first place picks up 24 of Wood River's 71 points, going out with their own invitational Thursday afternoon by defeating five other teams...

Hurst rumped home first in the low hurdles, 103-yard dash and grabbed the pole vault at 11 feet... Oakley was a double winner during the day, winning the high jump and adding a second in the high hurdles...

Wood River's 71 points, going out with their own invitational Thursday afternoon by defeating five other teams... The regular season closes on Sunday, Dec. 15. The Eastern Conference championship game is scheduled for Saturday, Dec. 21...

# Viking-Falcon Game Opens NFL Schedule

NEW YORK (AP) — The 1965 National Football League season will start on Saturday night, Sept. 14, with the Minnesota Vikings hosting the Atlanta Falcons... Six more games have been booked for the following afternoons Sunday through Thursday...

STUDEBAKER PARTS SALES & SERVICE General Automotive Service... CASSIA MOTORS BURLY Ph. 678-5243

# State Group Slates Spring Field Trials

PAUL — The Idaho State Field Trial Association's spring competition will be held Saturday and Sunday on the Julius Clawson farm, located at 1200 North Purves, Twin Falls, association publicity chairman.



# Rose Sparks Redlegs Past Cardinals 4-2

CINCINNATI (AP) — Pete Rose, whose eighth-inning homer tied the game, doubled on a run in the 12th, giving Cincinnati a 4-2 victory over St. Louis Thursday night... Leo Cardenas started the final rally with a single off Larry Jaster...

# Oakland Nips Orioles In 13th Inning

OAKLAND (AP) — John Davidson's sacrifice fly in the 13th inning drove in the winning run and Oakland won its first game in its new stadium Thursday night... Reggie Jackson led off the inning with an infield single...

# Standings

Table with columns for Team, W, L, Pct, GB. Lists standings for various teams including Houston, St. Louis, Pittsburgh, etc.

# Eagle Outfitter Questions Study Of Mountain Lion

BOISE (AP) — An Eagle outfitter charged Thursday that a segment of persons over this state which does not believe in modern big game and fish management and that it is here to study in the Big Creek area...

# Pickoff Play Lets Solons Edge Twins

ST. PAUL-MINNEAPOLIS (AP) — Washington catcher Bill Bryan picked Red Carew off the bases loaded in the ninth inning, preserving the Senators' 7-6 victory over Minnesota and ending the Twins' six-game unbeaten streak...

# FISH MOVEMENTS

The upstream movement of fish at Columbia River dams... Remon Webster put down an 18 lb. Columbia River dam... Donnellie scored fly to Frank Robinson in centerfield.

# Soviet Delegate Brings Issue To Olympic Meeting

LAUSANNE, Switzerland (AP) — Constantine Andriano, Soviet delegate, brought the issue of Soviet participation in the 1968 Olympic Games to a meeting of the IOC...

# Judo Tourney Set Saturday

The Intermountain AAU and Judo Black Belt Association annual tournament will begin at Twin Falls high school gymnasium at noon Saturday and conclude with the grand championship about 8 p.m.

# WE BUY, SELL & TRADE GUNS

Advertisement for gun trading with logo 'RED'S Trading Post' and contact information for Warberg's.

Large advertisement for Bob Reese Motor Company featuring a cartoon character and text: 'Bob Reese Motor Company 500 Block Second Avenue South Twin Falls, Idaho'.



Classified

TO PLACE YOUR WANT AD PHONE 733-0931

Other Magic Valley Residents in: Buhl, Castleton...

DEADLINES Monday thru Friday 5:30 Day Before Publication

Neat Waitresses Wanted Apply in Person

SALES MANAGER Excellent Opportunity For Management Trainee

WANTED Service Station Attendant Cactus Pete's

DRIVERS NEEDED Nationwide mobile home transporter

AUTOMOBILE SALESMAN We will train, salary plus commission

BOYS Applications being taken for Twin Falls Paper routes

FIELD REPRESENTATIVE Party interested to represent

TRUCKING business for sale Two late model trucks with overhead

FOR RENT Two 12 x 24 ft mobile homes

FOR SALE: Nice model for sale by the owner

FOR SALE: 1967 Ford Mustang coupe

FOR SALE: 1967 Ford Mustang coupe

FOR SALE: 1967 Ford Mustang coupe

FOR SALE: 1967 Ford Mustang coupe

TRUCK SALESMAN WANTED APPLY IN PERSON

MANURE HAULING LEO'S CUSTOM FARMING

CUSTOM MANURE HAULING JIM HILLBROD

CUSTOM FARMING FLOWING, DISCING

MANURE HAULING Verdon Electric Mill

CUSTOM FARMING SALINAS BROTHERS

CUSTOM FARMING Verdon Electric Mill

MANURE HAULING Verdon Electric Mill

CUSTOM FARMING Verdon Electric Mill

MANURE HAULING Verdon Electric Mill

CUSTOM FARMING Verdon Electric Mill

MANURE HAULING Verdon Electric Mill

CUSTOM FARMING Verdon Electric Mill

MANURE HAULING Verdon Electric Mill

CUSTOM FARMING Verdon Electric Mill

MANURE HAULING Verdon Electric Mill

CUSTOM FARMING Verdon Electric Mill

MANURE HAULING Verdon Electric Mill

CUSTOM FARMING Verdon Electric Mill

MANURE HAULING Verdon Electric Mill

CUSTOM FARMING Verdon Electric Mill

MANURE HAULING Verdon Electric Mill

CUSTOM FARMING Verdon Electric Mill

MANURE HAULING Verdon Electric Mill

CUSTOM FARMING Verdon Electric Mill

MANURE HAULING Verdon Electric Mill

CUSTOM FARMING Verdon Electric Mill

Investments \$147,000 - \$200,000

Money to Loan \$5,000 - \$25,000

Music Lessons \$5 - \$10 per lesson

Guitar/Piano Lessons \$5 - \$10 per lesson

Business Directory \$10.00

Business Directory \$10.00

Business Directory \$10.00

Business Directory \$10.00

Business Directory \$10.00

Business Directory \$10.00

Business Directory \$10.00

Business Directory \$10.00

Business Directory \$10.00

Business Directory \$10.00

Business Directory \$10.00

Business Directory \$10.00

Business Directory \$10.00

Business Directory \$10.00

Business Directory \$10.00

Business Directory \$10.00

Business Directory \$10.00

Business Directory \$10.00

Business Directory \$10.00

Business Directory \$10.00

Business Directory \$10.00

Business Directory \$10.00

Business Directory \$10.00

GATEWAY TRAILER CENTER'S 4th Annual OPEN HOUSE

Friday - Saturday - Sunday APRIL 19th-20th & 21st

9:00 a.m. to 6:00 p.m.

GIFTS-FAVORS-REFRESHMENTS

FREE DRAWING EVERY HOUR FOR

CASES OF LIBBY'S CANNED FOODS

GRAND DRAWING SUNDAY, APRIL 21st AT 4:00 P.M.

FOR 10 CASES ASSORTED LIBBY'S FOOD PRODUCTS

(NO PURCHASE NECESSARY)

GATEWAY TRAILER CENTER

Addison Avenue West Twin Falls

CLASSIFIED BUSINESS DIRECTORY

sends new and old clients to you every day!

reaches 22,000 homes (72,000 readers), and saves on your pocket cash.

PHONE 733-0931

Homes For Sale 50 "MLS"

DETAILED 2 bedroom home built on lot

WILL TRADE this large 4 bedroom home

E. W. McROBERTS 733-0931

NEW HOME 3 bedrooms, 2 baths, large living room

5 BEDROOMS 5 1/2 bathrooms, formal dining room

Moderately Priced Well designed 3 bedroom, optional 4th bedroom

High Style New 3 bedroom home, richly carpeted throughout

Reduce For Quick Sale 3 bedrooms, 2 baths, built-in garage

Food Distributorship Spare-parts business unlimited

For Lease Service area property, this has been a top dollar volume

Trucking business for sale Two late model trucks

For Rent Two 12 x 24 ft mobile homes

For Sale: Nice model for sale by the owner

For Sale: 1967 Ford Mustang coupe

For Sale: 1967 Ford Mustang coupe

For Sale: 1967 Ford Mustang coupe

For Sale: 1967 Ford Mustang coupe

For Sale: 1967 Ford Mustang coupe

For Sale: 1967 Ford Mustang coupe

LYNWOOD REALTY

306 N. Locust Phone 733-5555

TO RENT, BUY or Sell Buhler Realty 306 N. Locust

2400 DEEDED Acres - Cassia County, Dry farm, cattle ranch combination

2400 DEEDED Acres - Cassia County, Dry farm, cattle ranch combination

415 East Main Street - 878-4151

Wanted-Trade or Buy 1/2 acre 4 miles N.W. of Buhl

410 MARTIN STREET - 3 bedroom home with full bathroom

2000 ELIZABETH Boulevard - country living for only \$47,000

210 WALNUT - Very attractive 2 bedroom home with full bathroom

408 POLK - This desirable 3 bedroom home with full bathroom

HAMLETT REALTY Dave Hamlett, Broker 202 2nd St. N. 733-4079

931 OF TOWN HOMES 2 bedroom full bathroom, newer home

3 BEDROOM 2 1/2 BATH Full bathroom laundry home, garage

100 SHARES North Side Canal Water for sale or lease

60 SHARES North Side Canal Water for sale or lease

SHAW REALTY Home - 2 1/2 bedrooms, 2 1/2 bathrooms

CLASSIC HOME - Two build on your lot, 4 bedrooms, 2 1/2 bathrooms

100 SHARES North Side Canal Water for sale or lease

SHAW REALTY Home - 2 1/2 bedrooms, 2 1/2 bathrooms

SHAW REALTY Home - 2 1/2 bedrooms, 2 1/2 bathrooms

SHAW REALTY Home - 2 1/2 bedrooms, 2 1/2 bathrooms

SHAW REALTY Home - 2 1/2 bedrooms, 2 1/2 bathrooms

SHAW REALTY Home - 2 1/2 bedrooms, 2 1/2 bathrooms



MAGIC VALLEY TOLL FREE NUMBERS  
Buhl, Castleford, Wendell, Gooding, Hagerman, Jerome, Burley, Rupert, Declo, Puff, Norland, Filer, Hollister, Rogerson, Jackpot, Nev. Dial 335-5375

- Apartment-Furnished 70
3rd bedroom apartment, nicely furnished, new, to walk carpet.
3rd bedroom apartment, nicely furnished, new, to walk carpet.
3rd bedroom apartment, nicely furnished, new, to walk carpet.

- USED BUYS
ONE almost new 12 BRILLION roller harrow, grow foot wheels, front end rear.
ONE 1966 single disc JOHN DEERE Van Brunt grain drill on rubber.
USED JOHN DEERE 630 Land Plane, 9'6" cut.

- REGISTERS HEREFORDS
Edward C. Bails & Sons Route 3, Box 21, Jerome 230-295.
WE SLAUGHTER ON Farm Slaughtering BLEEP VEWAL
North Main Lockers For sale, call 733-4322 Evenings 733-7118 WE PAY TOP PRICES FOR ALL KINDS OF SLAUGHTER CATTLE CARTER PACKING COMPANY 345-234 - Duhi

- REGISTERED Herefords
Edward C. Bails & Sons Route 3, Box 21, Jerome 230-295.
WE SLAUGHTER ON Farm Slaughtering BLEEP VEWAL
North Main Lockers For sale, call 733-4322 Evenings 733-7118 WE PAY TOP PRICES FOR ALL KINDS OF SLAUGHTER CATTLE CARTER PACKING COMPANY 345-234 - Duhi

- REGISTERED Herefords
Edward C. Bails & Sons Route 3, Box 21, Jerome 230-295.
WE SLAUGHTER ON Farm Slaughtering BLEEP VEWAL
North Main Lockers For sale, call 733-4322 Evenings 733-7118 WE PAY TOP PRICES FOR ALL KINDS OF SLAUGHTER CATTLE CARTER PACKING COMPANY 345-234 - Duhi

- REGISTERED Herefords
Edward C. Bails & Sons Route 3, Box 21, Jerome 230-295.
WE SLAUGHTER ON Farm Slaughtering BLEEP VEWAL
North Main Lockers For sale, call 733-4322 Evenings 733-7118 WE PAY TOP PRICES FOR ALL KINDS OF SLAUGHTER CATTLE CARTER PACKING COMPANY 345-234 - Duhi

- REGISTERED Herefords
Edward C. Bails & Sons Route 3, Box 21, Jerome 230-295.
WE SLAUGHTER ON Farm Slaughtering BLEEP VEWAL
North Main Lockers For sale, call 733-4322 Evenings 733-7118 WE PAY TOP PRICES FOR ALL KINDS OF SLAUGHTER CATTLE CARTER PACKING COMPANY 345-234 - Duhi

- REGISTERED Herefords
Edward C. Bails & Sons Route 3, Box 21, Jerome 230-295.
WE SLAUGHTER ON Farm Slaughtering BLEEP VEWAL
North Main Lockers For sale, call 733-4322 Evenings 733-7118 WE PAY TOP PRICES FOR ALL KINDS OF SLAUGHTER CATTLE CARTER PACKING COMPANY 345-234 - Duhi

PHONE 733-0931
MOUNTAIN STATES IMPLEMENT 325 South 733-4323
Ask for Classified

NEED AN EXPERT?
USE THIS HANDY DIRECTORY AS A GUIDE TO FAST, RELIABLE SERVICE. PHONE TODAY FOR FREE ESTIMATES.
24 HOUR ANSWERING SERVICE
The Telephone-of-Any-Advertiser. In This Advertiser's Dial 733-2282, Telephone Answering Service, Day or Night. The Advertiser Will be Notified to Call You.

Air Conditioning
Boarding & Training
Building Contractors
Chain Link Fence
Concrete Forming
Dry Wall
Electrical Contractors
Excavation
Fuel Oil
Gun Repair
Housemoving
Insulation
Medical
Painting
Plumbing
Septic Tank Service
Water Hoses

REGISTERED Herefords
Edward C. Bails & Sons Route 3, Box 21, Jerome 230-295.
WE SLAUGHTER ON Farm Slaughtering BLEEP VEWAL
North Main Lockers For sale, call 733-4322 Evenings 733-7118 WE PAY TOP PRICES FOR ALL KINDS OF SLAUGHTER CATTLE CARTER PACKING COMPANY 345-234 - Duhi

REGISTERED Herefords
Edward C. Bails & Sons Route 3, Box 21, Jerome 230-295.
WE SLAUGHTER ON Farm Slaughtering BLEEP VEWAL
North Main Lockers For sale, call 733-4322 Evenings 733-7118 WE PAY TOP PRICES FOR ALL KINDS OF SLAUGHTER CATTLE CARTER PACKING COMPANY 345-234 - Duhi

IT'S FUN to use Want Ads.
Phone 733-0931
What's this I hear about you talking back to your teaching machine?



# WE'VE GOT EM!

## 112 TOP QUALITY

CARS  
PICKUPS  
TRUCKS

Take Your Choice, Not Chance

- '63 CHEVROLET \$1065 4-door sedan, V8, automatic, transmission, power steering, cruise control, standard floor mats, extra clean.
- '60 DODGE \$1095 4-door sedan, V8, automatic, transmission, power steering, cruise control, standard floor mats, extra clean.
- '66 FORD \$1195 custom sedan, 312 V8 engine, automatic transmission, excellent tires.
- '63 IMPERIAL \$1895 4-door sedan, full power and air conditioning, One owner, like new.
- '63 CHEVROLET \$995 Bel Air 6-passenger wagon, V8 engine, automatic transmission, power steering.
- '66 COMET \$1095 2-door sedan, 4-cylinder engine, standard transmission, for economy, see this.
- '59 OLDSMOBILE \$115 4-door station wagon, full power.
- '66 DODGE \$1110 4-door sedan, V8 engine, automatic transmission.
- '63 CHEV 1/2-ton Long wide body, 6-cylinder engine, 3-speed transmission, power brakes, and wipers, trailer hitch.
- '63 Ford Long Wide 1-ton pickup, 6-cylinder engine, 3-speed transmission, trailer hitch, 2nd year.
- '63 CHEV Suburban 1-ton extra good, excellent for hunting and fishing.
- '63 DODGE 1-ton Wide Body 6-cylinder, 4-speed.
- '61 GMC 2-Ton 6-cylinder engine, 4-speed 2-speed axle, long wheel base, 8.25x20 tires.
- '60 FORD F600 2-ton dump, 4-cyl, 4x4, 2-speed axle, 8.25x20 tires.
- '63 DODGE 2-Ton V8 engine, 4-speed, 2-speed axle, long wheel base, good buy etc.
- '65 GMC 2-Ton 6-cylinder engine, 4-speed 2-speed axle, 16" tires and good rubber.
- '63 CHEV 1/2-ton Long wide body, V8 and 4-speed transmission.
- '60 INTERNATIONAL \$335 1-ton pickup, 6-cylinder engine, 3-speed transmission, extra good, 6-cylinder, V8 engine, standard transmission, real nice.
- '63 STUDEBAKER 1/2-ton Long wide, 6-cylinder engine, 4-speed transmission, trailer hitch.
- '66 CHEV 50 Series 1/2-ton pickup, 300 V8 engine, 3-speed transmission, 2-speed axle, full size, 2nd wheel, 20 tires, this tractor is ready to go in wash.
- '63 FORD F600 2-ton long wheel base, heavy duty 330V V8 engine, 5-speed transmission, 2-speed axle, 16x20 tires, 1 extra clean.
- '61 FORD F750 2 1/2-ton long wheel base, 301 heavy duty V8 engine, 5-speed transmission, 2-speed axle, 16x20 tires, extra good condition.
- '67 FORD 600 1 1/2-ton heavy duty 330 V8 engine, 3-speed transmission, 2-speed axle, 16x20 tires, 2nd wheel, 20 tires, this tractor is ready to go in wash.
- '63 CHEV 2-Ton Big 6-cylinder engine, 4-speed transmission, 2-speed axle, extra long wheel base.
- '63 CHEV 3-Ton V8, 4-speed, 2-speed axle, 8.25x20 tires, 30" axle and grain bed with under body tires, extra good condition.
- '66 DODGE Dart G.T. sport coupe, V8, automatic transmission, very low miles, factory warranty.
- '67 DODGE \$2095 1 1/2-ton hardtop, Big 6-cylinder, automatic transmission, power steering, factory warranty.
- '63 BUICK \$1695 Wildcat 4-door hardtop, New premium tires, power steering and brakes.
- '59 FORD \$235 station wagon, V8 engine, standard transmission, real good.
- '65 COMET 4-door station wagon, 6-cylinder, standard transmission, real nice.
- '58 DODGE \$177 4-door sedan, V8 engine, automatic transmission, runs extra good.
- '66 COMET 2-door sedan, 6-cylinder engine, standard transmission, 4 real green stuff.
- '67 FORD 1 1/2-ton long wide body, 4-cylinder, 4-speed transmission, 11x20 tires, factory warranty, good.
- '65 FORD 1 1/2-ton Long wide body, V8 engine, automatic transmission, power steering, 15.50" in rear axle, 7.50" front axle, 600x20 tires.
- '65 FORD Ranchero 6-cylinder engine, standard transmission, almost new tires, for economy in a pickup see this.

### PICKUPS

### TRUCKS

- '61 GMC 2-Ton 6-cylinder engine, 4-speed 2-speed axle, long wheel base, 8.25x20 tires.
- '60 FORD F600 2-ton dump, 4-cyl, 4x4, 2-speed axle, 8.25x20 tires.
- '63 DODGE 2-Ton V8 engine, 4-speed, 2-speed axle, long wheel base, good buy etc.
- '65 GMC 2-Ton 6-cylinder engine, 4-speed 2-speed axle, 16" tires and good rubber.
- '63 CHEV 1/2-ton Long wide body, V8 and 4-speed transmission.
- '60 INTERNATIONAL \$335 1-ton pickup, 6-cylinder engine, 3-speed transmission, extra good, 6-cylinder, V8 engine, standard transmission, real nice.
- '63 STUDEBAKER 1/2-ton Long wide, 6-cylinder engine, 4-speed transmission, trailer hitch.
- '66 CHEV 50 Series 1/2-ton pickup, 300 V8 engine, 3-speed transmission, 2-speed axle, full size, 2nd wheel, 20 tires, this tractor is ready to go in wash.
- '63 FORD F600 2-ton long wheel base, heavy duty 330V V8 engine, 5-speed transmission, 2-speed axle, 16x20 tires, 1 extra clean.
- '61 FORD F750 2 1/2-ton long wheel base, 301 heavy duty V8 engine, 5-speed transmission, 2-speed axle, 16x20 tires, extra good condition.
- '67 FORD 600 1 1/2-ton heavy duty 330 V8 engine, 3-speed transmission, 2-speed axle, 16x20 tires, 2nd wheel, 20 tires, this tractor is ready to go in wash.
- '63 CHEV 2-Ton Big 6-cylinder engine, 4-speed transmission, 2-speed axle, extra long wheel base.
- '63 CHEV 3-Ton V8, 4-speed, 2-speed axle, 8.25x20 tires, 30" axle and grain bed with under body tires, extra good condition.

Just Received 15 NEW 1967 Flasco Stock and Grain Combination Beds With Fold Down Top. All Steel Undercarriage. Mounted on Your Truck \$395

16 - 2 Ton Trucks In Stock Some Used Beds

Bob Reese's Dodge City

Kenny Moun Winn Ellis Charley Hatch Joe Butler  
579 Block 2nd Avenue South

## HUGE USED CAR SALE

- '64 FORD Falcon \$895
- '67 PONTIAC Tempest \$1995
- '65 FURY Plymouth 4 door sedan \$1395
- '66 VW Sedan \$1295
- '65 BUICK Electra 225 \$1395
- '66 DODGE Charger \$1895
- '65 MERC Monterey \$1395
- '66 RAMBLER \$1595
- '66 KARMANN GHIA \$1595
- '66 OLDS Jetstar Sedan \$1895

We also have a good supply of commercial units at our everyday low prices. Shop where you have the guarantee. If you don't shop your new or used purchase at Glen Jenkins you may pay too much.

## GLEN JENKINS CHEVROLET

John Carlson 733-0187  
Larry Sackert 733-0280  
Egg Standley 733-0343  
John Jenkins 733-6241  
Bruce Coughlin 733-8461  
Leonard Fisher 733-1281  
Bill Meeker 733-5446

## ABBIE URIGUEN'S

Extra Sharp

Late Model Trade-Ins

### 1967 CADILLAC

Coupe DeVille, all power, factory air conditioning, 16-way power seats, power windows, tilt and telescopic steering wheel, 15,000 actual miles, local 1 owner, sold here for over \$7000.

### 1966 PONTIAC

Bonneville 4-door hardtop. All power including factory air conditioning, low mileage, local 1 owner.

### 1966 BUICK

Wildcat, Arctic white with blue interior, radio, heater, automatic transmission, power steering, power brakes, factory air conditioning. We sold this one here.

### 1966 MERCURY

Comet Capri 2-door hardtop, radio, heater, automatic transmission, power steering, 25,000 miles, 1 owner.

### 1966 OLDS

94 4-door hardtop, All power including 6-way seats, power windows, tilt and telescopic steering wheel, factory air conditioning, 25,000 actual miles, local 1 owner.

### 1965 BUICK

LeSabre 4-door hardtop, Beautiful gold metal with white top, Champagne interior, Automatic transmission, power steering, power brakes, air conditioning, new car trade-in.

### 1965 FORD

Medium speed, 8-cyl, 4-cyl, extra sharp.

### 1965 CHRYSLER

New 1967 6-passenger station wagon, Automatic transmission, power steering, power brakes, factory air conditioning, local 1 owner.

### Abbie Uriguen

Oldsmobile - Buick  
712 State Avenue S. 733-8271

# BONANZA MOTORS IN BURLEY

## PONTIAC DEMO SALE

ONE WEEK ONLY

ALL CARS UNDER 5 YEARS - 50,000 FACTORY WARRANTY

### GRAND PRIX

Hardtop coupe. Loaded with extras! Cordova top, power antenna, stereo tape, rear defogger, Cruise control, aluminum wheels, tilt steering wheel, power windows, door locks and seats, automatic air conditioning. This car has everything.

STICKER PRICE \$5872  
**NOW \$4780**  
See Gary Asson

### LEMANN'S HARDTOP

Coupe. Bucket seats, automatic transmission, console, 3500 engine, stereo tape, rally wheels, power steering, radial tires.

STICKER PRICE \$4107.16  
**NOW \$3450**  
See Fritz Schmidt

### PONTIAC BONNEVILLE

Also loaded. Cordova top, electric antennae, cruise control, power deck lid, electric seat, electric windows, automatic air conditioning, complete lamp group.

STICKER PRICE \$5775.32  
**NOW \$4646**  
See Bob Lynch

### LEMANN'S 2-door

Hardtop, 350 V8 engine, radio, power steering, white wall tires, Cordova top, bucket seats.

STICKER PRICE \$3644.69  
**NOW \$2990**  
See Danny Asson

### PONTIAC EXECUTIVE

Wagon. Exterior wood paneling, 3 seats, power disc brakes, tilt steering wheel, air conditioning plus automatic power steering power brakes.

STICKER PRICE \$5462.60  
**NOW \$4492**  
See LeRue Asson

### PONTIAC CATALINA

4-door sedan. Power steering, power brakes, automatic transmission, tilt wheel, 400 4-barrel engine, white wall tires.

STICKER PRICE \$4138.27  
**NOW \$3360**  
See Thurm Hess

NUMBER 1 VOLUME DEALER IN MINI-CASSIA IS NEW DODGE PICKUPS IN STOCK AND OVER 60 NEW CARS TO CHOOSE FROM

# BONANZA MOTORS

DODGES - BUICKS - PONTIACS - OPELS

NEW CARS 1356 Overland - 678-9465  
NEW DODGES 1137 Overland - 678-2237  
USED CARS & TRUCKS 1091 E. Main St. - 678-9669  
BURLEY

See RED SKIES OF MONTANA with Richard Widmark and Jeffrey Hunter on

THEISEN THEATRE  
10:30 Friday evening Channel 11

1966 MERCURY Monterey 4-door coupe, 100k miles, 1 owner, car fully equipped, 300 engine, automatic, power steering, 16-cylinder, 16-cylinder window.

1964 COMET 4-door sedan, Beautiful 3-tone finish, Big 6-cylinder, standard transmission, perfect.

1961 COMMUTER 4-door sedan, V8 engine, mechanically perfect, 1 owner car, low car trade-in.

1964 DODGE 4-door sedan, 4-cylinder, Radio, heater, chrome luggage rack, white sidewall tires, new car trade-in.

1950 WILLYS Station wagon, V8, 4-cylinder, drive, winch, runs good.

1950 FORD 1 1/2-ton truck, 4-cylinder, 2-speed, 1st bed, low miles.

701 Main Ave. E. 733-7700  
MILLER AUTO SALES Clean, near new cars and a few older, competitive prices, no gimmicks, Hassles, Idaho 42-1111  
WE WILL PAY CASH for your car at REAL-DEAL AUTO SALES

## End Of The Month CLEARANCE

1964 CADILLAC Sedan DeVille, Red, fully powered, air conditioning.

\$2315

1965 FALCON Custom wagon, V8, automatic, radio, heater, excellent rubber, sharp as a tack.

\$1285

1964 CONTINENTAL 4-door sedan, Leather interior, fully powered, air conditioning.

\$2165

1965 FORD Custom sedan, Blue, radio, heater, V8, automatic, power steering, premium tires.

\$1285

1965 PLYMOUTH Fury tilt hardtop coupe, V8, automatic, radio, heater, new premium, autumn Bronze.

\$1835

1962 FORD Thunderbird, Fully powered, air conditioning, new rubber, padded roof.

\$1185

1964 BUICK Electra 225 4-door sedan, V8, automatic, power steering, power brakes, radio, heater.

\$1565

1960 CORVAIR Sedan, Seal of the week.

\$128

## JOHN CHRIS MOTORS

PONTIAC - CADILLAC - GMC  
Bob Foltner 733-2913  
601 Main Ave. E.  
Bob Nelson 733-0652  
Dell Timmon 733-4158  
George DeTillot 733-2485  
Open til 8:00 p.m.  
Closed - Sundays  
Phone 733-1823

Use These Phone Numbers FREE OF CHARGE

No matter where you live in these areas, you can now telephone the Times-News Free of Charge.  
If you live in Buhl, Castleford 543-4948  
Hendall - Goodland - Hagerman - Jerome - Marsburg 525-2335  
Piper - Wallula - Power 329-6175  
Burley, Rupert, Declo, Paul, Norland 678-2532

# Hansen Organizes To Get Sewer System

**By DOROTHEA STEELSMITH**  
Times-News Correspondent

**HANSEN**—In a vote at a public hearing on a proposed sewer system held Wednesday night at the former Grange Hall, the residents of Hansen assumed responsibility for its installation.

Organizing themselves under the leadership of the Hansen Sewage and Water Users' Organization, Inc., a non-profit organization, preliminary plans were laid and application will be made for federal funds. Present council members were given a vote of confidence by the townspeople by being retained as the board of directors for the undertaking.

Jack Straubhaar, of the Dale Riedel and Associates, consulting engineers, outlined the proposed system and the estimated cost. A two-stage aerated lagoon type system was decided upon as virtually guaranteeing no odors and conforming with sanitation measures to control all public water pollution.

These plans were decided upon during several previous council meetings with the officials of the company.

Laterals will be installed in the alleyways leading into trunk lines in oxidation natural drainage. A preliminary survey shows that a natural drainage flows from the north and from the south into a natural drainage line which will lead into the lagoons. A map showing the proposed laterals and trunking was displayed at the hall.

The cost was estimated at about \$100,000, not to exceed \$210,000 and will accommodate 200 people with the purchase of adequate land to install more lagoons if needed, in future years. There are now about 420 residents in the city.

Total funds are available for rural improvement through the Farmers Home Administration, but in order to take advantage of these funds, the application must be made immediately. The entire cost of the system will be paid for through users' fees. The interest will be five per cent on a 40-year loan.

There are some 174 water users present and on the basis of this amount, an estimate of the cost to the individual user was set at a possible \$25 hook-up fee plus the cost of installing the line from the house to the lateral which was estimated to be about \$1.25 per foot.

Each user will have approximately a \$3 per month service charge. These rates were used as guidelines and are not definite. The newly organized association will have to determine these and other policies.

It was decided the hook-up fee of \$25 would be the membership fee of the organization, part to be paid as soon as possible. All who have hook-ups to be made, to either homes or businesses, are eligible members of the city's organization.

Speaking on behalf of the FHA was Jack L. Allen, who is also a resident of Hansen. He stated that funds through another gov-

ernment loan administration are available to homeowners to borrow from if they cannot raise the necessary initial hook-up and cost fee.

Alfred May, the city attorney, gave legal aspects of the proposed system.

Vergil Ball, mayor of Hansen, and Norville Reynolds, clerk, both spoke, stating that all of the city's facilities including the use of the lawyer will be at the disposal of the organization. The present council members have been working for the system when it was learned that funds might be available through the government rural improvement program.

Application was made a year ago for funds, and it was thought at that time that it would be two or more years before anything could be accomplished, but due to the small size of the city, Hansen can qualify as a rural area, and be eligible for immediate action through the formation of a non-profit organization.

A good representation of the townspeople were present at the hearing with some 46 signatures being obtained at this initial meeting. The councilmen feel this response and organization guarantees the much needed sewage system. Besides Ball and Reynolds, Connie Bourn, Allen Bourn and Kenneth Mothershead are on the board of directors.

Although 100 per cent cooperation of city residents is desired, a majority, which seems to be indicated, of about 70 per cent can obtain the needed results. Nearly all the residents are having serious troubles with their present systems or live near neighbors who are.

The water system has been in service in the city since about 1940, and many of the individual septic tanks and cesspools are no longer adequate, and becoming health hazards and expensive to correct and maintain.

Several years ago the town attempted to secure a sewage system, but the cost was prohibitive, but since that time, more land has been annexed into the city limits, and the longer period of time to pay off a loan makes it feasible at this point.

With the installation of a sewage system, it is hoped that more people looking for permanent residence will consider the city a good place to invest in a home, and possibly attract some small businesses. Some are already in process of being investigated.

**News Of Record**

**TWIN FALLS COUNTY**  
Twin Falls Police Court  
Fined by Judge Harry Turner for violation of the city dog ordinance were Bill McCallister, 2201 Spryng Drive, \$5; Janet Williams, 211 60th Ave. N., \$5; Carol Martin, 77 Madison St., \$5; John Bergeth, 815 Fourth Ave. W., \$5; and Bob Day, 1409 Ninth Ave. E., \$5. Other fines included Jerry Aderman, \$70; Charles Ryan, 20 days in jail, suspended; Danny L. Vickers, \$10 plus larceny; Ralph W. Heck, \$45, disorderly conduct; and Linda McDaniel, \$45, writing a check without sufficient funds.

Fined for being drunk in a public place were Jack N. Williams, \$35 bond forfeited; John Rice, \$30; Roy Butler, 25 days in jail; Rufino Granada Jr., 20 days in jail; Fred Emery, and Clinton Hase, both 10 days each and has been annexed into the city jail.

## Club To Meet

**JEROME**—The J.O.N. Apalooza Horse Club will meet at 8 p.m. Saturday at the Magic Valley Cafe conference room to discuss the forthcoming Regional show at Nampa on June 1-2. They will also make plans for other approved shows they participate in. Anyone interested is invited to attend.

**ASHES ARE DROPPED**  
**MEXICO CITY, (AP)**—An urn with the ashes of Gen. Heriberto Jara was dropped from a presidential plane into the sea off Veracruz Thursday night in accordance with the last wishes of the onetime revolutionary who died Wednesday at the age of 68.

**REAL SIPPIN' WHISKEY!**

**EZRA BROOKS**  
Kentucky's Finest Lile Distillery

## Go-Ahead Given

**WASHINGTON (AP)**—Smockey the Bear, given a resounding vote of confidence by the public and his sponsors, starts his 24th year today of telling the people: "Only YOU can prevent forest fires."

Sponsors gave him the go-ahead—Thursday—after discussing a nationwide public opinion poll showed 90 per cent of all adults, and nearly all school-age children are fully acquainted with his efforts to stop man-made fires.

The fire-fighting bear and his campaign are sponsored by the U.S. Forest Service, the National Association of State Foresters and the Advertising Council.

## News Of Record

**TWIN FALLS COUNTY**  
Twin Falls Police Court  
Fined by Judge Harry Turner for violation of the city dog ordinance were Bill McCallister, 2201 Spryng Drive, \$5; Janet Williams, 211 60th Ave. N., \$5; Carol Martin, 77 Madison St., \$5; John Bergeth, 815 Fourth Ave. W., \$5; and Bob Day, 1409 Ninth Ave. E., \$5. Other fines included Jerry Aderman, \$70; Charles Ryan, 20 days in jail, suspended; Danny L. Vickers, \$10 plus larceny; Ralph W. Heck, \$45, disorderly conduct; and Linda McDaniel, \$45, writing a check without sufficient funds.

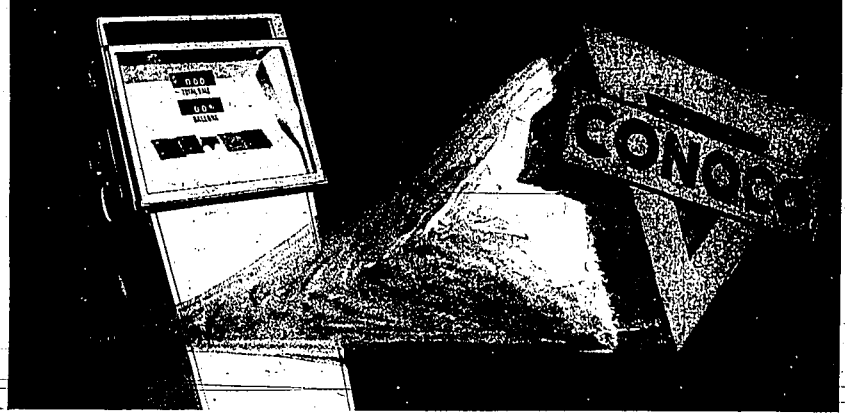
Fined for being drunk in a public place were Jack N. Williams, \$35 bond forfeited; John Rice, \$30; Roy Butler, 25 days in jail; Rufino Granada Jr., 20 days in jail; Fred Emery, and Clinton Hase, both 10 days each and has been annexed into the city jail.

**WIN UP TO \$100.00 SATURDAYS ON THE WHEEL OF FORTUNE**

Drawings Every Few Minutes  
Bring Your Sweepstakes Tickets

# 2 more CONOCO quality gasolines to save you money

NEW CONOTANE...NEW SUPER GASOLINES



Now...pay only for the octane you need. You may save up to 3¢ a gallon.

At Conoco, you now have 4 hot gasolines to choose from... Conotane, Regular, Super and Premium. Many cars now using Regular can switch to New Conotane and get top performance at less money. For those cars that need more octane than Regular, but less than Premium, there's new Super, with savings up to 3¢ a gallon. And with all 4 great Conoco gasolines, you get all the additives your engine needs for peak performance: anti-rust, anti-frost, a carburetor detergent, and anti-knock compounds. Pay only for the power you need... another reason why Conoco is the Hottest Brand Going!

Ride the hot one... CONOCO... Hottest brand going!

**DINE AND DANCE to the Music of MUSTIE BRAUN**

Singing and Playing your requests at the PIANO AND ORGAN!

**30 LUCKY LICENSE WINNERS**

Register Free All Week  
Winners Posted Wed. and Thurs.

**\$25 - \$10 \$5 CASH**

**SUNDAY DINNER FREE!**

SERVED FROM 1:00 P.M. (Adults Only)

**SUNDAY SWEEPSTAKES DRAWING 24 - \$25 CASH DRAWINGS No Purchase Necessary**

**WEDNESDAY & FRIDAY BANK NIGHTS 3 - \$200 BANKS**

**CLUB CAFE**  
LoVell and Roberta Barton, Harvey and Hazel Wright

Go  
**93**  
Highway 93, JACKPOT, NEVADA

Visit HemisFair '68



# Streamflows Will Vary From 49 To 99 Per Cent Of Average

The forecast of streamflows throughout Idaho this year will vary from 49 per cent of average on the Big Wood River to 99 per cent on Henry Fork, near Ashton.

According to the Water Supply Outlook for Idaho report by the Soil Conservation Service, major rivers with adequate storage facilities will have to draw on stored water early in the season to make up for the deficiency in streamflows.

The report states that water users with water rights based on the natural flow of rivers will be critically short if weather during the irrigation season remains near normal.

Irrigators through the stations are encouraged to use good water management practices to stretch supplies available for 1968.

On many of the smaller rivers without adequate storage facilities or stored water, the water supplies are forecast to be so low that crop acreage reductions through the stations are strongly recommended.



# Farm AND Ranch

April 19-20, 1968 Twin Falls Times-News A-1

## Sugar Firm Expanding Area Facilities

A three-pronged facility expansion program by the Amalgamated Sugar Company will accommodate increased area beet production in the Magic Valley this year, and is expected to strengthen beet prices too.

Company officials said that major elements of the building program were made possible as a result of 1967 beet control negotiations with farmer representatives. A new formula for computing storage charges—which company and grower share, in effect—should produce savings for both.

Attention has focused recently on the best-growing province of Idaho's Treasure Valley, where the company is expanding its Hampa factory to a size that will make it the nation's largest. But the Magic Valley, where Amalgamated expects to purchase nearly 40 per cent of the beet supply this fall, isn't being ignored.

Construction of sugar storage facilities will add better than 800,000 bags of capacity at the company's Twin Falls and Mini-Cassia facilities by the end of the year. Completion of a brand new beet seed processing plant at Burley is expected by Oct. 1.

The new storage will be much less costly than equivalent amounts of commercial warehousing. Storage charges are deducted in computing the company's net return from sugar sales. The net return is a primary factor in the determination of beet prices, and it goes up as storage costs decline.

At Twin Falls, pugs will be stored in new bulk bins, a 5.5 million gallon tank which will hold the equivalent of 360,000 bags of refined product. A new boiler capable of generating 80,000 pounds of steam per hour and a beet pulp press, the factory's flesh, also are part of this year's Twin Falls capital program.

At Mini-Cassia—a 465,000-bag capacity Weibull dry bulk silo is already under construction. More than 100 piles have been driven into the ground, to depths averaging 80 feet, as a foundation for the huge tank—110 feet in diameter and nearly 300 feet high. Mini-Cassia already has two of the big metal silos in use.

The new beet seed processing plant will take over a 15,000 square foot warehouse building at the company's inactive Burley factory. It replaced an older seed facility at Ogden, and officials say it will have at least 10 per cent more capacity than the original unit.

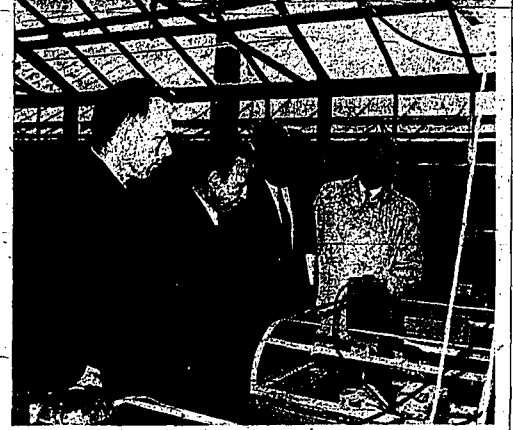
The plant is designed to process approximately one million pounds of raw seed a season. It will accommodate simultaneous production of three seed sizes, a job that includes cleaning, cleaning, treating with fungicides and insecticides, and packaging.

One million pounds of raw seed will produce about half that much in processed form. The discard will be ground up and sold to livestock farms.

Amalgamated exports to raw deliveries from almost 160,000 acres of contracted sugar beet and this fall. That includes an estimated 80,000 in the Magic Valley proper. The company's Twin Falls and Mini-Cassia plants will also process beet grown on Elmore and Owyhee County desert farms.



CONSTRUCTION CREW is busy working on the pit area of a 465,000 bag capacity dry bulk silo at the Mini-Cassia Amalgamated Sugar Co. plant near Paul. Photo shows some of the piles that have been driven into the ground, averaging 80 feet in depth, as a foundation for the huge tank.



EXAMINING BEANS in a greenhouse at the University of Idaho are members of the Idaho Bean Commission. From left, are Dr. James Guthrie, department of plant science, University of Idaho; Robert Colner, Twin Falls, chairman of the Idaho Bean Commission, and Walter Renke and Tom Morrison, both Gooding and members of the commission.

## Bean Commission Reviews Research At University

MOSCOW — Members of the Idaho Bean Commission met recently with University of Idaho, College of Agriculture, officials to review the research being conducted by the University of Idaho in behalf of Idaho beans.

One of the major topics of discussion was the research being conducted at the University by Dr. James Guthrie on halo blight in beans. Dr. Guthrie is responsible for developing a serology test which will detect the presence of halo blight in the bean seed.

His report to the Commission indicated that the disease was well under control in Idaho and that the bean industry should no longer have any major problems with halo blight.

Dr. Finley, head of the Plant Science Department discussed with Bean Commission members the work being done at the University on bean varieties.

Bean Commission members suggested to the University staff that work should be done on a large white bean variety to meet the demands of the foreign market, especially in Italy, France and Spain.

The need for this larger white bean was discovered on a recent visitation to those countries by Jerome Wilson, of Twin Falls, in behalf of the Idaho and Rocky Mountain Bean Industries.

At the conclusion of the meeting, the Idaho Bean Commission approved a \$5,000 appropriation to the University of Idaho for additional halo blight plots.

Commission members also toured the facilities at the University which included the laboratory, greenhouse and test plots.

research to be conducted from July 1, 1968, to June 30, 1969, under the direction of Dr. Guthrie.

Commission members also toured the facilities at the University which included the laboratory, greenhouse and test plots.

## Along Fences And Canals

Lee Sharp from University of Idaho, Moscow, and a group of his college boys were at the Point Springs Seeding Experimental Station near Malta this week making various studies of the planting done at the station.

Spring branding, vaccinating and de-horning were done this week at the George Crofts ranch in Elba. Assisting with the work were Donald Chandler and Glen Taylor.

Arden Wickel, Elba rancher, took advantage of the Easter holidays when his sons were going from school and took care of the branding, vaccinating and de-horning of his range herd.

Mr. and Mrs. Assel Gridley, Tuttle, have been building new corrals and a loading chute at their farm and Mr. and Mrs. William Maude, Tuttle, have had leveling done and ditches built at their farm by the Soil Conservation Service equipment.

The North Side Canal Co. has been working at Tuttle cleaning main canals with a crane and bucket machine.

Branding and vaccinating of cattle belonging to Mrs. Mary Knox was done last week at the Pritch Fork Ranch north of King Hill. Assisting with the branding operations were Herb Nink, Ellwood Thomas, Alvin Irving, William Reed, Elmer Babington and John Reddison. The cattle soon will be turned out to the north hills for summer pasture, en route to the Knox Dry Ranch pasture land near Hill City.

Grading of bulls in the Malta area was conducted on individual ranches before cattle were turned out to spring range. Assisting were Glenn Beatty, Burley, county extension agent and Wade Wells, University of Idaho. Local ranchers assisting were Jack Pierce, Ross Olson, Arthur Schorzman, Dale Pierce, Glen Parke, Bill Hitt, Charles Jones, Asiel Zollinger and Harvey Wight.

Denman Byram is preparing land at their ranch south of King Hill for spring planting of grain and some pasture land. The Byrams bought the former Arthur Greer ranch south of King Hill along the Snake River.

Wesley Fink is planting early potatoes at his ranch south of King Hill.

Mrs. Charles Gulm, north Shoshone, reports so far this spring she has had the following flowers in bloom in her flower garden: Pansies, forsythia, tulips, jonquils, narcissus and hyacinth.

## Fourth Of '67 Potato Crop Is Diverted

WASHINGTON (AP) — A fourth of the nation's surplus supply of 1967 crop potatoes has been diverted into livestock feed, potato starch and four other government subsidy programs.

The Agriculture Department reports that 12.6 million hundredweight has been put to these uses under its efforts to bolster producer prices. Payments of up to 75 cents a hundredweight to growers for diversion of extra supplies into these byproduct uses have been made.

The payments dropped to a top of 45 cents in April 14. The department is urging reduced plantings this year as a means of strengthening prices.

## 4-H Club Meets

Members of the Junior Jersey Julcer 4-H Club discussed purchasing calves and the timing of them during a recent meeting.

The 4-H project books were given to the members.

## Trail Ride Set

Trail rides were discussed during a recent meeting of the Twin Valley 4-H Club at the home of Chris Annis.

A trail ride has been scheduled for April 21. A report of the potluck supper the club had recently at which the parents attended.

## POULTRY PROCESSING

We custom dress all types of poultry. Prices start at 10¢ per bird.

## POULTRY SUPPLY

213 5th Ave. W. 733-2168

## FOR FAST-SELLING RESULTS USE TIMESNEWS WANT-ADS

**FOUR NEW POINTS FOR GREATER CORN PROFITS**

1. PLANT EARLY AND THICK.
2. APPLY MORE FERTILIZER.
3. CONTROL WEEDS.
4. CONTROL INSECTS.
5. PLANT ALL DEKALBI

More Farmers Plant Dekalbi than any other brand.

TWIN FALLS. OPEN HOURS 24 HOURS A WEEK. Feed & Ice 7 DAYS A WEEK.

135 5th Ave. So. 733-1297

from the distillers of JIM BEAM bourbon

## Chateaux Vodka

Light as a Whisper  
80 proof

Dry, Dry, Dry

Pioneer Brand SEED CORN  
95 day No. 3862  
110 day No. 3558  
98 day No. 3711

26¢ per lb.  
T.F. Lbr. & Seed at Curry Crossing 733-9839

## KELLY-SPRING

### FOUR FULL POLYESTER C

You'll love the no-rump, no-bump ride!

You'll love the improved traction and long mileage!

You'll love the distinctive tread design and smart sidewall styling!

**\$17.54**

OUR PRICE

7.75-14/7.75-15... 18.95 plus 2.19/2.21 F.E.T.  
8.25-14/8.15-15... 21.95 plus 2.35/2.36 F.E.T.  
8.55-14/8.45-15... 23.95 plus 2.55/2.54 F.E.T.  
All prices plus trade-in, White walls 3.00 more.

Celebrity's Polyester Cord body has the high strength of nylon — with the smooth riding comfort of rayon — in a tire designed for today's high-speed highway driving!

Although there is no one system of quality standard or size code used by all tire makers, if it has the name "TWIN SPRING" you can be sure it's quality built.

FREE MOUNTING EASY CREDIT TERMS

## UNITED OIL

Kimberly Road Twin Falls

### TIRES FAMOUS FOR QUALITY

## 1967 Feed Tonnage Is Up Five Per Cent Over 1966

CHICAGO — A five per cent increase in 1967 feed tonnage over 1966 was reported by the American Feed Manufacturers Association in a bulletin just issued. The increase was reported in the two-year (1965-1966) period, with a 28 per cent increase in 1967 over 1966. The increase was reported for all classes of feed, including livestock and poultry feeds, with a 28 per cent increase in 1967 over 1966. The increase was reported for all classes of feed, including livestock and poultry feeds, with a 28 per cent increase in 1967 over 1966. The increase was reported for all classes of feed, including livestock and poultry feeds, with a 28 per cent increase in 1967 over 1966.



NEW OFFICERS of the Grassman of the Year program for Cassia county are, seated, Gene Riebold, left, re-elected secretary, and Ken Rosencranz, chairman. Standing left is J. Martin Lewis, vice chairman, and Hugh Hough, Boise, state grassman committeeman. Officers were named at a breakfast meeting at the National Hotel, Boise, where plans for the contest were discussed.

## Averages For Local Dairy Herd Listed

Dairy cows on production testing in Unit 1 of the Twin Falls County Dairy Herd Improvement Association during March averaged 35 pounds of butterfat per cow and 82 points of milk. Other high producing herds of over 50 cows on test, including dry cows...

## PLANT THICK



One of the best means of getting higher yields is to plant thick in narrow rows. This spreads out plants so each gets more light, moisture and fertility. DeKalb has XL Varieties bred and recommended for these conditions. See your DeKalb Dealer. "DEKALB" is a Registered Brand Name. XL Members are Varieties.

## It's TIME!

Yes! It's time to plan your fertilizer for the season — see us for your special needs in all your —

## DRY or LIQUID FERTILIZERS

Mixed and blended to your own specifications and/or special needs.

**LIQUID FERTILIZER**

**BULK BLEND FERTILIZER**

Let us help you plan your "BETTER CROP" for next fall right now!

- TOTE BINS
- PULL SPREADERS
- SPREADER TRUCKS
- SOIL TESTING

**RANGEN, Inc.**  
543-4338—BUHL  
FEED BEANS SEEDS GRAINS

## Don't Spray

Now is NOT the time to spray for alfalfa weevil, says Twin Falls County Agent Donald Youiz. In last week's Times-News farm and ranch section, a headline of alfalfa weevil indicated that now is the time to spray. This is incorrect. Youiz says control of the adult weevil is not advised because chemicals which will do a good job may leave dangerous chemical residues. Chemical control of the larvae or worm, if control is necessary, is advised later in the growing season.

## Cassia Grassman Of Year Group Elects Officers

BURLEY — New officers for Grassman of the Year program for Cassia County were elected during a breakfast meeting at National Hotel. The Grassman of the Year program helps agriculture in our state, he stated. "Each county which selects a Grassman of the Year receives benefits locally." Doyle Scott, Boise, state Soil conservation committeeman, told the group that the Grassman of the Year program is an outstanding opportunity for businessmen and farmers to work together and "every entry in the program is a winner." Fred Kohl, Boise, University of Idaho Extension Service, reported that the education received in the Grassman of the Year was very valuable to each area.

## FROM PAST EXPERIENCE

It was reported that the judges have been increased from six to eight. New officers were elected including Ken Rosencranz, chairman; J. Marvin Lewis, Burley, vice chairman, and Gene Riebold, re-elected secretary.

## in narrow rows

One of the best means of getting higher yields is to plant thick in narrow rows. This spreads out plants so each gets more light, moisture and fertility. DeKalb has XL Varieties bred and recommended for these conditions. See your DeKalb Dealer. "DEKALB" is a Registered Brand Name. XL Members are Varieties.

## Film Shown At Grange Meet

A film entitled "Attack," was shown to members of the Knoll Grange during a recent meeting by Cliff Sharp, Twin Falls county office official. The program by the "Five Sharps" was arranged by J. H. Sharp, Linda and Petrie Sharp gave a piano and vocal numbers and Mr. and Mrs. Sharp and Linda presented a skit entitled "Is That So?" The next meeting will feature a potluck supper and "Booster Night" at the grange hall at 7:15 p.m. April 26. This will be an open meeting and the community is invited.

## Governor To Address 4-H State Confab

SHOSHONE — Gov. Don Sams will address the 4-H Congress on the University of Idaho campus at Moscow, June 2-4. The 4-H boys and girls from all parts of the state will attend. The theme, "A Person of Quality," emphasizes the responsibility of young people to make the most of their opportunities. All 4-H'ers 14 years of age and older can attend. Those planning to attend from Lincoln County are: Gene Kisting, Johnny Urrutia, Lorraine Tews, Linda Parson and Kelle Hansen. In addition to the governor, speakers will include Pete Cernera, Idaho secretary of state, and Paul (Tex) Yareout, Yakima, Wash., a member of the International Platform Association. Officers of the Gem State 4-H youth group are assisting the University of Idaho extension service in planning a week of education and recreation.

## TREFLAN

HAS PROVEN BEST!

For all 'round, Season-long, WEED CONTROL

ELANCO Treflan

In Beets & Beans

- Saves cultivation and hand labor
- Works wet or dry
- Kills all annual grasses and many broadleaf weeds
- Costs less than other leading weed killers

## GETS DEGREE

MALTA — Ardel Wickel, 17, son of Mr. and Mrs. Arden Wickel, president of the Ratz River chapter of Future Farmers of America, received a state farmer degree at the state FFA convention.

## Party Slated

SHOSHONE — A swimming party will be held by members of the Handy Homemakers 4-H club, members decided at their meeting at the home of Mrs. Waldo Jones, leader. Outdoor camping trips were outlined for the summer, also. The cooked food sale will be held May 4 at Palmer's Service. Charlene Jones gave a demonstration on how to diaper a baby.

## FOR BETTER CROP YIELD USE

## U.S. STEEL DRY FERTILIZERS

BULK or BAG Blended to your Specification!

## "NEW HOLLAND" HAYING EQUIPMENT

When you buy early, your whole family benefits!

In stock... Ready to go! See us now! Buy early for the Best Deal! WE HAVE:

**BALERS:**

- No. 268 P.T.O. STRING BALERS
- No. 275 P.T.O. H.D. STRING BALERS
- No. 282 STRING & WIRE TIE BALERS
- No. 285-CUSTOM OPERATOR BALERS
- String & Wire Tie
- No. 1282 BALERS, Self Propelled, String & Wire Tie

**BALE WAGONS:**

- No. 1030 PULL TYPE, 2 Wide
- No. 1044-PULL-TYPE-3 Wide
- No. 1035 SELF PROPELLED, 2 Wide
- No. 1046 SELF PROPELLED, 2 Wide
- No. 1047 SELF PROPELLED, 3 Wide

**M & M EQUIPMENT**

PHONE 324-5200 JEROME

## DIESEL TRUCKS

4 -- 1965 DODGE D-500  
5 speed, 2 speed, 318 V8 engine, tractor equipped, 300 rubber, excellent tires. Average mileage 26,000 to 36,000 ... **\$2,795**

3-1962 INT. DIESELS  
Trucks in excellent condition. YOUR CHOICE ..... **\$7,000**

1963 DCOF 4,000  
250 Cummins, 5 with 3 speed tandem, new paint, air conditioning. **\$8,500**

1953 MACK DIESEL  
300 Cummins, 5 & 3, Mac Boggle, good rubber ..... **\$3,500**

**CLARK MOTOR CO.**  
436-4761 HI-way 24 RUPERT

For the Fastest, Easiest Application of Your Fertilizer - Use Our "Tran-Stan" Bins and "Tyler" Spreaders, or Have Us Apply It With Our Truck Spreaders.

"Tran-Stan" 4-ton Fertilizer bins are delivered direct to your field by our trucks... the trailing legs are lowered, the bins are raised 2 feet high to allow direct loading of spreader from bottom of bins. This eliminates any need of ever leaving your field while spreading fertilizer.

**CONTACT US NOW!**

## IDAHO GRANGE CO-OP

SHOSHONE 886-2226 FAIRFIELD 764-2254 GOODING 934-4821

## Chemical Protection Of Crop Production Increasing

**SALT LAKE CITY** — Chemists are processing increasing amounts of insecticides from progressive western farms, according to Dr. Dole Stukenholz, western agronomist for United States Steel Corp.

Addressing a group of potato processing officials at Idaho Falls recently, Dr. Stukenholz said that growers have come to identify weeds, insects and nematodes as persistent limiting factors. As an example, he indicated that the practice had been used to control sugar beet nematodes in parts of Utah and Idaho for years.

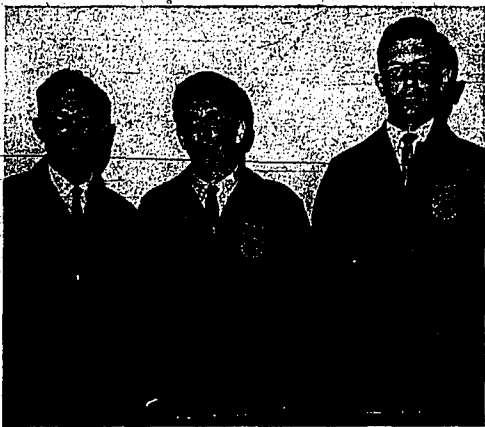
"It is now being encouraged in Western Nebraska and North-eastern Colorado," he said.

"Some studies have shown some real economic advantages to fumigating potatoes in Washington and Idaho. Such use of soil temperature and soil condition are important considerations."

In answer to questions, Dr. Stukenholz conceded that the entire farm chemicals area is still in the experimental stage. He added that a few chemicals are most effective if they are not incorporated with the soil.

"Some herbicides give season-long weed control, whereas others are effective for six to eight weeks. If a herbicide is a persistent chemical, the farmer must be careful not to plant a sensitive crop the following year," he said.

Turning to insecticides, Dr. Stukenholz pointed out that a



**SOUTHSIDE DISTRICT FFA** in the annual FFA Beet Growing Contest are, from left, Donald Norrist, Twin Falls, first; Mike Sommer, Twin Falls, second, and Wade Miller, Filer, third.



**NORTHSIDE DISTRICT FFA** winners in the annual Beet Growing Contest are, from left, Wayne Kuhl, first place, and Al Lutz, second place, all Jerome FFA members. Not pictured is Mark Gunnung, Wendell, third place winner.

## Winners Of Sugar Beet Contest Given

Future Farmers of America in Twin Falls and Jerome Counties recently received awards for raising outstanding sugar beets in a beet growing contest, sponsored by the Amalgamated Sugar Co. and the Beet Growers Association in both counties.

The FFA members received the awards during a recent awards banquet. The winners were judged on their records kept, attendance at tours, and various farming practices in raising the sugar beets.

Northside district winners were Al Lutz, Jerome, first place; Wayne Kuhl, Jerome, second, and Mark Gunnung, Wendell, third.

Southside winners were Donald Norrist, Twin Falls, first; Mike Sommer, Twin Falls, second, and Wade Miller, Filer, third.

Guest speaker during the awards banquet was Dr. Fred Kallusky, Buhl dentist, who spoke on hypnosis.

Also during the banquet, chapter awards were presented.



## VACCINES AND SUPPLIES FOR CATTLE, SHEEP, HORSES, HOGS...POULTRY

Now Is the Time to Immunize Your Stock

Get an extra line of livestock vaccines and supplies. We have the best in the West. Call for a free catalog.

## BLACKLEG Loss! VACCINATE WITH CCS BACTERIN Protects against Blackleg and Malignant Edema

Hazelton Drug  
Dick Blashm, R.P.  
Your Community Drug Store  
Ph. 829-5461, 829-5386 Hazelton

## Director For Conservation Camp Named

Jerald O. Capps, director of student affairs at Lewis-Clark Normal School, Lewiston, has been named Resident Director of the eighth annual Idaho Youth Conservation Camp.

Sponsored by both the State Department of Public Lands and the State Department of Parks the 1968 camp will be located at Farnest State Park.

Capps brings to the Youth Conservation Camp considerable experience in youth work. In 1966 he was Program Director for the Boy Scouts of America Summer Camp and during 1967 through 1968 he coached and taught in the Borley area.

All Idaho youths fourteen through seventeen inclusive, who are Idaho residents and who have not previously attended the camp, are eligible to apply. The camp lasts for eight weeks and each boy is furnished room, board, transportation and 200 per month in exchange for forty hours of work per week.

Each legislative district in Idaho will be represented by at least one boy and selections of names will be made by drawing. All interested boys should write to R. L. Lindholm, Youth Camp Coordinator, Department of Public Lands, Statehouse, Boise, Idaho, 83727.

## Tire Usage On U.S. Farms Is Increasing

CUMBERLAND, Md. — The wheels of progress have not bypassed American farmers. With today's mechanization more tires than ever are needed to operate farm machinery.

Exports James A. Bailey, vice president of sales, The Kelly-Springfield Tire Co.

Farms of from 500 to 1,000 acres average 67 wheels per farm while farms over 1,000 acres average 110 wheels.

The Rubber Manufacturers Association reported that 5,762,000 farm tires were shipped to distributors in 1967. Of this total 2,610,000 were for original equipment, 91,000 for export and 2,670,000 for the replacement market.

Currently, American farmers use enough rubber each year to make tires for seven million passenger cars.

"New tractors with dual wheels are catching on with the farmers all over the country. This means four tractor tires instead of two, Bailey said.

The dual wheel tractors are turning out more work in fewer hours, adding the farmer in his battle against bad weather. Dual wheels provide additional flotation to get a job done that would be tough to handle with conventional single drive wheels.

Farmers are in more need today of quick and efficient service, reducing their machine downtime to a minimum. A tire to get a job done, out of service because of damaged tires can be costly, comments Bailey.

## Foothill Club Elects Officers

MURTAUGH — Foothill Lads and Lassies 4-H Club have elected Mike Howard, president; Mark Howard, vice president; Charlotte Davis, secretary; Kristi McFarland, treasurer; Wilma Silvers, reporter; Wayne Bushanan, sergeant-at-arms; Dana Silvers, parliamentarian; Debbie Howard, recreation; Carol Brockman, song leader; and Charles Davis, project chairman.

It was decided to have a door-to-door car wash all day on May 24 as a fund raising project. Susan Hogue, Mike Howard, Mark Howard, Dana Silvers, and Wilma Silvers are junior leaders.

Robert Howard is leader of this club and Wayne Hogue, assistant leader. The club's next meeting will be held at 2 p.m. April 28 at the Wayne Hogue farm.

**PROGRAM SET**  
KING HILL — King Hill Grange members will meet at 8 p.m. Tuesday at the hall. A special program honoring the Grange will be presented by Mrs. John Davis, lecturer.

**LOSE Something?**  
See the Classifieds  
Classification 1

**WATCH THESE COOL NIGHTS and SPRING RAINS!**

**DON'T RISK LOSS OF STOCK**

**HELP CONTROL BLOAT WITH BANNER CHEMICAL and MINERAL COMPOUND**

With Trace Minerals Added  
Mixed with your SALT and FEED

Ask your feed dealer to supply you, or contact us. REGISTERED IN THE STATE OF IDAHO.

**BANNER CHEMICAL AND MINERAL COMPOUND** already mixed with salt available at—

**Globe Seed & Feed Co.**  
Twin Falls, Idaho Phone 733-1373

## University In Nevada Gets 40 Acres

RENO — A 40-acre gift of land was recently made to the University of Nevada. It was pointed out at a meeting of the Citizens Advisory Board to the Max C. Folschman College of Agriculture's Central Nevada Field Laboratory.

The land is located at the laboratory or experiment station about 15 miles south and west of Austin. The acreage had been leased in the past to the University at no charge. Owner of the land was formerly Ted Ford Work, publisher of the Los Angeles Daily Journal and owner of considerable farming property in Reese River Valley. He of Jan. 1. Mr. Work deeded the 40 acres to the University as a gift.

The deeding of the land is a valuable addition to the experiment station facilities," said Dr. Ray E. Ely, associate director of Agricultural Experimental Stations at the University, "and will allow us to make additional developments and in-

vestments on the property to...  
April 19-20, 1968  
FOR FAST-SELLING RESULTS USE TIMES-NEWS WANT ADS

**CUSTOM MEAT CUTTING**

**CUSTOM SLAUGHTERING ON THE FARM**

Custom Poultry Dressing (by appointment)

**BEEF By The Half or Quarter**

"Meat is our BUSINESS — NOT A SIDELINE"

**KIMBERLY COLD STORAGE**

CLIFF FALLIS Kimberly 423-5284

**SPRINKLER HEADS**

**SPECIAL LOW PRICE** on all type "RAINBIRD" SPRINKLER HEADS

See us for quotes on: HAND LINES SOLID SET WHEEL LINES

**G. T. NEWCOMB, INC.**

729 COMMERCIAL AVENUE (Across from Twin Falls, Commission Company) PHONE 733-3221  
Branch Office at Ketchum, Idaho

**When you buy New Holland early... your whole family benefits!**

Now's the time to buy your new New Holland baler of forage harvester. Early. Before your crop comes in. Here's why: When you buy during April or May, you take advantage of Early Buyers' Bonus... the pre-season program that earns you valuable premiums. For example, a new self-propelled machine earns a table-model color TV. Or if you prefer, a choice of two other exciting gifts. Pull-type units earn big gifts too! Choice of black and white portable TV, electric drill, adding machine, portable typewriter or a special family kit. But remember! Offer is good only during April and May. And only on new New Holland balers and forage harvesters. Stop in soon for complete details.

**NEW HOLLAND DIVISION OF SPERRY RAND**

SEE THESE AT—

**ANDY & BOB'S Motor Company**

YOUR WEST-END DEALER FOR ALLIS-CHALMERS AND NEW HOLLAND

Phone 543-4318 BUHL

**Can our new diesel fuel additive solve engine problems for you?**

Now there is a new additive combination—D-GUARD—in AMERICAN PREMIER Diesel Fuel. Its benefits include lower maintenance costs and longer engine life. D-GUARD is a combination of ingredients, carefully selected for top performance: Anti-Rust—Inhibitors and other engine parts work better and last longer. Metal Deactivator—prevents oxidation of fuel caused by its reaction with copper, brass and other metals. Stabilizer—prevents the formation of gum and varnish. Dispersant—prevents filter clogging and power loss. Demulsifier—fuel sheds water to prevent sputtering, stalling, power loss, rusting and filter plugging.

And AMERICAN PREMIER Diesel Fuel is still red in color, still high in caloric, still low in sulphur. Ask your American Oil Farm Man for AMERICAN PREMIER Diesel Fuel... it's better than ever with new D-GUARD. Call him today! AMERICAN PREMIER Diesel Fuel... another quality reason to farm with American Oil.

You expect more from American and you get it!

**TWIN FALLS FARM SERVICE CENTER**

For diesel fuel with D-GUARD, call the American Oil Farm Service Center or your American Oil Farm Man.

OFFICE: Eastford Drive—South  
PHONE: 733-9005

BUHL T. J. (Bud) Bodero 543-6192 EDEN Don Black 825-9914 GOODING Claude Scanlon 934-4151 TWIN FALLS E. E. (Ed) Hodkins 733-0741

BURLEY Larry Adams 678-8082

D. J. Don Granzow, Manager  
Derm. Warner, Agronomist  
Dick Guley, Agronomist

## Amalgamated Sugar Co. Consolidates Research Unit

The Amalgamated Sugar company today announced the organization of a consolidated research department and the appointment of Hugh C. Roush as director of research and as director of research and technical services.

The company has extensive agricultural and factory research programs, but they have been conducted separately until now. Executive vice president Keith Orme said the reorganization would give research activities a larger role in the company's long range planning.

Customer services and quality control also will benefit from the consolidation, Orme said.

Two other key research personnel of the company are being promoted in connection with the reorganization. Julian Johnson, manager of the company's Twin Falls factory research laboratory, was named general chemist and manager of quality control. Karl Schenck, senior research chemist at Twin Falls, becomes manager of operational research.

Both men will be transferred to Ogden.

Rounds, 47, joined Amalgamated in 1948 as a student engineer. Naval Academy graduate, he was promoted to research engineer in 1950 and became manager of the Twin Falls laboratory in 1954.

Five years later, he was elevated to general chemist and director of research and, in 1962, he was appointed assistant general superintendent.

The new research department head is a vice president and director of the industry-sponsored Beet Sugar Development Foundation, and a former director of the American Society of Beet Sugar Technologists. In 1965, he was appointed by Secretary of Agriculture Orville Freeman to a two-year term as an advisor on the operations of USDA's four utilization research laboratories, where new agricultural products are developed.

The outdoor phase of operations in the new department will continue under the supervision of Dr. George Rush, director of agricultural research. Rush was recently elected president of the national technologists group. Agricultural research includes laboratory and beet seed breeding facilities at Nyas, Ore., under the management of Donald Olszewski.

Rounds lives in Ogden, at 4150 Taylor. The family includes Betty and three youngsters—Decky, 12; Steven, 15, and Scott, 19.

## Wool Output, Prices Down During 1967

BOISE — Shorn wool production in Idaho during 1967, estimated at 7,346,000 pounds, according to the USDA Livestock Reporting Service, is down 1.5 percent from 7,465,000 pounds in 1966.

The 1967 wool crop is six percent below the 1966 clip and 20 percent below the 1961-65 average. The average price received for shorn wool during the 1967 marketing year was 28 cents per pound, compared with the 1966 average of 27 cents per pound. The value of the 1967 clip is \$2,038,000, compared with \$4,653,000 for 1966 and \$4,457,400 for the 1961-65 average.

The average fleece weight of sheep shorn in 1967 was 10.6 pounds, compared with 10.4 pounds in 1966 and 10.3 pounds for the five-year average.

The number of sheep shorn during 1967 hit set at 668,000 head, seven percent below 1966's 751,000 head and 22 percent below the five-year average of 831,000 head.

FOR FAST-SELLING RESULTS USE TIMES-NEWS WANT ADS

## DAIRY RATIONS

MEAL OR PELLETED FEED FOR MORE PROFIT YIELD!



LET US KEEP YOUR FEEDER FULL OF OUR HIGH ENERGY CALF CREEP PELLETS BABY CHICK FEED

Top Quality... Competitive prices on COMPLETE LINE LIVESTOCK & POULTRY FEEDS At our mills or delivered to you...

**ALLISON FEED MILL**  
FILER 326-4315  
Locally Owned and Operated

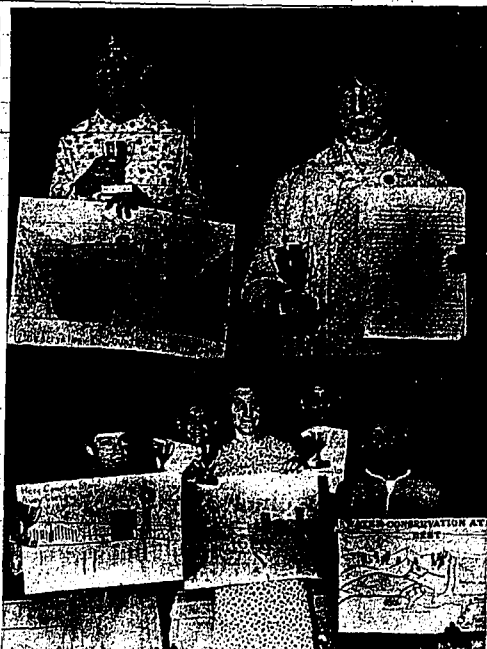
## DO IT NOW! LET US REBUILD & CONDITION

YOUR PLANTING & HARVESTING EQUIPMENT

ALL TYPE CUSTOM MACHINE SHOP

and LATHE WORK  
• HARVESTERS • PILERS • PUMPS and all types of Farm, Machinery and Equipment

**CURL MFG. CO.**  
1960 Floral Ave. (Block So. Kimberly Road)  
Twin Falls Phone 733-7461



FIRST PLACE WINNERS of the Poster and Essay Contest on soil and water conservation, sponsored by the Twin Falls Soil District Auxiliary, are, top left panel, Angela Ward, Hollister; top right panel, Connie Lutz, Clover, and bottom panel, front row, Debra Lee, Leano Olszewski and David Galvin, and back row, Mike Bulmer and Santos Salinas, all Bickel School, Twin Falls. Not pictured is Kathy Vance, another Bickel first place winner in the essay contest.

## Farmers Back Gooding Group

WENDELL — Gooding County Farm Bureau has passed a resolution supporting the county commissioners in their decision to study the county courthouse situation before any building is started.

Robert Boldt was appointed to report on the County Planning Commission at the next meeting. Mrs. Joe Duffek, Jerome, reported information concerning the multi-office telephone program.

## Lesson Given

KING HILL — Mixing of Cakes was the lesson when the Varsity Peck 4-H Club met at the home of Mrs. Glan McCleary, as their lesson.

Sarah McCleary demonstrated the proper way to mix a cake and bake it. Cindy Gluch signed the membership roll. Mrs. McCleary reminded members to do some cooking and report at the next meeting.

**RYDALLS**  
FRESH MEATS  
203 Fourth Ave. West  
Twin Falls, Idaho 83401

**Jepp's PUMPS**  
For all purposes Sales - Service - Installation  
FINANCING AVAILABLE  
**PUMP & EQUIP. CO.**  
127 So. Park 733-7581



## PIONEER. HYBRID CORN

For excellent standability, continuous corn harvest and high plant population, plant Pioneer single cross 3558 and 3306 and Pioneer 4-way cross 371, 3862 and 3284.

Varieties adapted for moderate and short season grain and silage usage.

Seed available at your favorite grain dealer or Niagara warehouses at Caldwell, Twin Falls and Homedale.

**NIAGARA CHEMICAL DIVISION**  
P.O. BOX 885 CALDWELL, IDAHO 434-4386

## Conservation Poster And Essay Contest Winners Given

Trophies and ribbons were awarded to winners of the poster and essay contest on soil and water conservation recently by two members of the Twin Falls Soil Conservation District Auxiliary.

Mrs. Ellis Fuller and Mrs. Lee Ditzgen presented the awards to winners of the contest at three area schools. Sixth grade students at Bickel School and the Hollister School and sixth, seventh and eighth grade students at Clover-Trinity Lutheran School, participated in the contest.

## Reports Given

**To Magic Grange**  
SHOSHONE — Oscar Kerner reported on rockchuck poisoning and Waldo Faught on the Grassman of the Magic-Grange meeting.

Mrs. Kermer, D. G. Mitchell and Paul Bancroft were appointed to select a candidate to represent the Grange in the Grassman contest.

Waldo Faught, women's activity chairman, reported on a food sale held recently. George Horn reported the Grange will sponsor public dances on May 4 and 18.

Mr. and Mrs. D. G. Mitchell showed films taken in Idaho which compare farming methods today with those years ago. Mrs. Sam Eakin, Jerome, was narrator.

**Club Divided**  
SHOSHONE — The Dietrich Youth Helpers 4-H club will be divided with boys in one group and girls in the other. Mrs. Ladd Hollibaugh is the leader, with Mrs. Don Knowles assisting. Projects were discussed at the meeting this week. Chris Ridinger brought refreshments.

**FARM AUCTION CALENDAR**

Contact the Times-News Farm Sales department for complete advertising coverage of your farm sale. Hold time: telephone coverage over 72,000 nodes in Magic Valley advance billing. All at one special low rate. Free sale listed in the Farm Calendar for 10 days before.

**All Magic Valley Sales Listed Here**

APRIL 20  
Auctioneer: Wes, Elmer, Wall and Messersmith  
Advertised: April 18 and 19  
Sole Managed by Del Hoyt  
Auctioneer: Delbert Alexander, Auctioneer  
APRIL 21  
WOODRUCK, IN SPEAKER  
Auctioneer: April 19 and 20  
Auctioneer: Harold Kidos and  
APRIL 24  
VIC INLEY  
Auctioneer: April 22 & 23  
Auctioneer: Wes, Elmer, Wall and Messersmith  
APRIL 27  
ANDERSON'S CARS SUPPORT  
Auctioneer: April 25 & 26  
Auctioneer: Wes, Elmer, Wall and Messersmith

## Grass Tetany—Problem Cattle Disease During Spring Months—Is Explained

Grass Tetany is a term that can mean trouble to cattlemen during the spring time as the grass greets occur.

"Depending on a number of factors," said Dr. Verle R. Bohman, chairman, animal science division, Max C. Fleischmann College of Agriculture, University of Nevada, "grass tetany may contribute to considerable loss to cattlemen." Dr. Bohman recently described symptoms of the disease and possible ways to protect against it based on research done by him and his associates at the college.

Grass tetany, explained Dr. Bohman, is a highly fatal disease of cattle and sheep occurring in crops principally in the spring during the first two to three weeks after cattle start to graze lush pastures. It is also known to occur in a lesser extent, when regrowth of dormant summer grasses is evident. It occurs quite frequently in Nevada. Such occurrences are sporadic and unpredictable for any given area. It is a metabolic disease and non-infectious.

Initial symptoms of the disease include a state of excitability in affected cows along with an uncoordinated gait. Later the lack of coordination may become more pronounced. The animal may become violent, highly irritable and show extensive salivation. These symptoms are usually followed by muscular twitching (tetany), convulsions, coma and death.

This entire sequence may take less than 12 hours. Dr. Bohman points out that tetany in plants may also cause death as quickly, so it is sometimes difficult to ascertain the true cause of the loss.

Clinically, plasma magnesium content is usually low in affected animals immediately preceding the occurrence of the outward symptoms. However, with the onset of the symptoms the plasma magnesium rises to normal and is no longer a diagnostic aid.

In the course of the research on the disease, said Dr. Bohman, a tetany has been artificially induced in cattle through the administration of citric or tartaric acid plus potassium chloride. This has been an important discovery in that it enables the research to progress without being dependent on the vagaries of the naturally acquired malady. Intravenous injections of calcium, magnesium gluconate will usually bring an affected cow out of it.

Some important observations associated with the research show that ruminants, cattle and sheep, are more susceptible than non-ruminants, older animals more than younger ones, lactating more than non-lactating animals, animals consuming roughages, more than those fed concentrates, and animals consuming young immature forages more than cattle consuming mature or cured forages.

Dr. Bohman recommends the following procedures to minimize losses from the disease: — If tetany develops in an animal within the herd, change feed immediately; any change should help; the addition of higher magnesium feeds would probably be of greater benefit; and cull.

— Be prepared to treat animals if tetany is noticed with the calcium, magnesium gluconate injection; usually, however, this is not possible; — Graze pastures that might produce tetany with steers or dry cows as much as possible, and; — Be on guard especially if the season is warm and to initiate early growth and then becomes wet and colder.



**"A tire you know you can trust!"**

**COOPER Starfire Imperial**

"a 4 ply tire to stabilize the ride for a safe drive"

● For average mileage.  
● "H-T" nylon or rayon cord for increased strength and stability.  
● Wide, deep Cooper tread grips the road for extra safety.  
● Top value of a moderate price.  
● Full 7-ply construction.

Available in other popular sizes

**\$17.95**

4.50/4.00/3.5 Nylon Black Tubelias plus \$1.50 Federal Excise Tax

| Size    | Ply | Price | Fed. Tax |
|---------|-----|-------|----------|
| 7.25-14 | 4   | 19.95 | 2.08     |
| 7.75-14 | 4   | 22.00 | 2.31     |
| 8.25-14 | 4   | 23.00 | 2.38     |
| 8.75-14 | 4   | 23.00 | 2.33     |
| 9.25-14 | 4   | 27.50 | 2.52     |

All vehicles with tire off car.

**Cooper NEW Full Service Guarantee**

NO LIMIT as to miles, months or road hazards. FULL SERVICE guaranteed for life of original tread as to quality of workmanship and material plus all normal road hazards, not including repairable punctures.

If a Cooper passenger tire requires adjustment under this guarantee, full service for service will be made on a new Cooper tire. This allowance will be based on the remaining depth of original tread and the Cooper Cooper Service replacement price which fairly represent the actual retail selling price of tires and is posted at point-of-sale.

Come on in where the best tire values begin!

**STUART MORRISON**

**Cooper TIRE CO**  
206 4th Ave. W. (Truck Lane)  
733-1464 Twin Falls

**CONTROL ATTAINED**  
WASHINGTON (AP) — The Agriculture Department reports adequate biological control of the Japanese beetle has been attained in most areas occupied by the insect pest. Much of this control was said to rest on parasites given by the insect by disease-carrying and by bacteria implanted in soils.

**PIPE**

**IN STOCK FOR Immediate Delivery**

"SIPSCO WRAP"

Non-Corrosive protection for all steel pipe for surface or underground installation. Over 300,000 feet in stock. 1/2 inch through 36 inch pipe, 12 gauge through 1/2 inch wall. APPROVED BY ALL GOVERNMENT AGENCIES.

THE ONLY WRAP PLANT OF THIS TYPE IN THE ENTIRE STATE OF IDAHO.

**SOUTHERN IDAHO PIPE & STEEL, CORP.**  
250 SOUTH PARK AVE. PHONE 733-8599 TWIN FALLS

ARCHIE LANGDON, Manager



### T.F. Pomona Grange Meets At Kimberly

KIMBERLY—Corporate farming was discussed during the April meeting of the Twin Falls County Pomona Grange at the Kimberly Grange. Richard Morgan told grangers that corporate farming is on the upgrade and will be a threat to the family farm as a whole. He pointed out a statement made by Secretary of Agriculture Orville Freeman as saying the ability of a diversified corporation to gain by taking heavy losses in farm operations and by writing them off against income made in other business ventures.

Mr. Morgan said this is obviously a fatal threat and detrimental to farmers. He indicated the tax laws may be one trouble spot that can be remedied. Ray Poe, youth chairman, announced that the Youth Camp will be June 28-30. Those interested in attending should contact him as soon as possible.

Lulu Manlock, a Filipino girl, currently working as a laboratory technician at the Twin Falls Clinic, told her country and the different customs and plan of her experiences in the United States.

Mr. and Mrs. Dean Britt and Burton Harmon gave a skit, "Please Go Home." Grace Durk played several violin selections with Virginia Honstead as accompanist.

The May meeting will be held May 11 at the Buhl Grange Hall.



**ACTION LINE THIS** will appear at the Intermountain Arabian Horse Show July 3-5 at the Twin Falls County Fairgrounds when Joe Dawkins, champion rider, will show his Arabian, Sedimer, in cow-cutting events. The horse is also a winner in stock horse shows. Dawkins rides for Phillip K. Wrigley of the famous chewing gum family.

### Property Owners Must Control Or Eradicate Noxious Weeds

Noxious weeds have become so thoroughly established and are spreading so rapidly that property owners must take steps in controlling and eradicating them.

Wallace (Wally) Savage, director of the Twin Falls County Weed Bureau, said it is a state law that all property owners, both private and corporate, must control or eradicate noxious weeds in Twin Falls County.

Mr. Savage said Title 22, Chapter 24 of the Idaho Code outlines the state law in regards to noxious weed control.

Mr. Savage says the county has several outlets for the chemicals for the noxious weeds. They may be obtained at Chiles Seed, Filer; L. W. Moore, Filer; Hansen; Community Builders, Murtagh, and at the county warehouses in Buhl and Kimberly.

Court orders will be issued to those property owners who are not adequately or properly controlling or eradicating noxious weeds.

Mr. Savage said it is up to the property owner to take care of his noxious weed problem. For further information about controlling or eradicating weeds, contact Mr. Savage at the County Weed Bureau office, Addison Street, Twin Falls.

### Richfield West End Club Starts

RICHFIELD—Organization meeting of the West End Club was held at the home of Leona and Mrs. Glen Ross. Ivan Hopkins, county agent, spoke.

David Ross was elected president, Mark Dixon, vice president; Roger Golocoda, secretary; Arnold Ross, treasurer; Ronald Hubmilt, flag bearer; Ronald Golocoda, reporter; and Dale Ralls, sergeant at arms.

Meetings will be held each first and third Fridays of each month. Mr. and Mrs. Ronald Ralls, Mrs. Jack Hubmilt and Terry Hopkins were special guests.

A special project this year will be assisting Lions Club members in setting out trees as a community benefit.

### Joe Dawkins To Appear At Arabian Horse Show Set For July 3-5 In Filer

FILER—The Intermountain Arabian Horse Association Show scheduled for July 3, 4 and 5 at the Twin Falls County Fairgrounds, will feature many champion riders and horses among them Joe Dawkins, Catalina Island, Calif., who will show Sedimer, a top cutting horse.

Sedimer stood in tenth place in the International Arabian Cutting Horse Association show scheduled for July 3, 4 and 5 at the Twin Falls County Fairgrounds, will feature many champion riders and horses among them Joe Dawkins, Catalina Island, Calif., who will show Sedimer, a top cutting horse.

Dawkins rides for Phillip K. Wrigley, Phoenix, Ariz., and has been showing top cutting and stock horses since 1960. In 1967 he rode Alegher, another Arabian, in the Albuquerque Show and placed among the top ten riders in the International Arabian Cutting Horse Association.

### Condition Of District Is Termed Good

KING HILL—Siphons, roads and laterals in the King Hill Irrigation District have been pronounced in outstanding condition.

Participating in the tour were Ted Moore, district manager; Karl Carsham and John Wheeler, directors; Don McCarter, of the McCarter and Tuller Engineering-firm, Boise; Frank Mueller and Amil Gehrig, Bureau of Reclamation, Boise; and Glenn Barrows and Jack Hansen, Bureau of Reclamation, Denver.

### Three Welcomed

JEROME—Three new cooperators were welcomed at the meeting of the North Slope Soil Conservation District at Jerome.

They were Clinton Stevens, William Green and Lloyd Overman. David Mitchell announced that judging for the dog contest will be at 8 p.m., April 23 at the conservation office.

Power Rates For Rent, Free Pickup & Delivery. INTERMOUNTAIN Fuel 733-6621—Twin Falls

### Idaho Beef Council Has Suggestion For Dollar Drain

BOISE—The Idaho Beef Council feels that it has a suggestion which might in turn eliminate some of the gold and dollar drain from the United States.

One way that this could be partially obtained would be through the elimination of the strict curtailment of beef imports into the United States from foreign countries; beef imports which must be paid for with American dollars.

The American cattleman, through technology, skill, and hard work, has been able to produce a product which is widely acceptable to the general American public; and he feels that given the opportunity to produce, he can so produce enough beef for the consumption of everyone in the United States at a price they can afford to pay.

The American cattle industry, being a producer of basic raw materials is an industry which produces an immediate chain reaction throughout the entire United States in the fact that from the cow-calf operator on through the retail markets, in their beef, there are many people working as a result of the cattle industry.

There is the auction market man, who is the man that handles the sales between the cat-

tleman and the feeder and the packer. There is the deliverer, the man, the trucking industry, the railroad industry, the grain industry, the supermarket with all of their complex organization and delivery and retailing system. The advertising agencies for the advertising media of the entire United States is affected by this individual chain reaction.

FOR FAST-SELLING RESULTS USE TIMES-NEWS WANT ADS

**FACTORY REBUILT MOTORS**

For most all-make and model cars and trucks

**IN STOCK OR 48-HOUR DELIVERY**

**CRANK SHAFT KITS**

HOISTS for all size trucks  
8,000 lb. WINCH... only \$135

"Monroe" SHOCKS For Cars and Pickups

**OVERLOAD SPRINGS**

**BRAKE SHOE EXCHANGE**

BRAKE LININGS


For all your needs in NEW & USED AUTO PARTS see us first


**TWIN FALLS AUTO PARTS**


Kimberly Road 733-2616


**SPECIAL! SAVE 50¢ cwt.**

ON

**CALF MANNA** 

**SUCKLE** 

**SHO-GLO** 

**VEAL-GLO** 

AVAILABLE AT EITHER

**TWIN FALLS FEED & ICE** 733-1297

135 5th Avenue South

or

**ALBERS MILLING COMPANY**

A Division of Carnation Co. Twin Falls

Corn Silage: high in TDN, excellent source of energy

**SUPERSTAR**

**NK Corn hybrids**

are your best choice for high quality silage

High grain content is essential when shooting for top feed value from silage corn and Northrup King hybrids will deliver this high grain-to-stover ratio.

What is the best time to cut corn for silage? Researcher's recommended silage making when the grain is dented and glazed and TDN content is highest.

Assure yourself of top quality silage by utilizing NK corn from us today.

**Magic Valley GROWERS, INC.**

TIRES-FERTILIZER-CHEMICALS-FARM SUPPLIES  
PETROLEUM-ON FARM TIRE SERVICE-BATTERIES

"TOPS IN SERVICE AND PRODUCTS"

TWIN FALLS 733-5671 (COURT CROSSING) JEROME 324-2388

**Enjoy the Advantages of Low Cost CONCRETE Head Gates**

For less than the cost of two canvas dams you can install a concrete head gate... and it will last forever!

**NO LIFTING** **18-INCH OPENING**

Easily installed with any manure loader or 3-point boom. ... will handle up to 160 inches of water.

**ONLY 6.50 EACH**

Also available in 24 inch opening

Concrete Front End Tractor Weights  
400 LBS. FOR \$40.00

**ROGER VINCENT**

4N 1/4 W of Asgrow Research Center (Hiway 30)  
Filer Phone 326-5029

**READY MIXED CONCRETE FOR ALL PURPOSES**

**LATEST, MOST MODERN EQUIPMENT!**

**FAST EFFICIENT SERVICE!**

**S.C.S. APPROVED MATERIALS!**

**EXPERIENCED COURTEOUS PERSONNEL!**

Ready to Use, in Any Amount... Prompt Delivery

CONCRETE DITCHES FOUNDATIONS SIDEWALKS DRIVEWAYS PATIOS BASEMENTS FLOORS, ETC. FEED LOTS

**READY-MIXED CONCRETE**

No order too large or too small - JUST GIVE US A CALL.

Call on us for ready-to-use concrete, swiftly delivered to you, in the quantities you want. Specially mixed for your exact needs, at low cost.

**PHONE-FILER 326-4326**

**SHERIDAN BUILDING SUPPLY**

326-4326 FILER



**BIRTHDAY PRESENT** for the general, Gen. Hugh Milton, former under-secretary of the Army, who spends a lot of time in his garden in Las Cruces, N.M., received a much-needed present on his 71st birthday recently—a load of mature for fertilizer. The general was deeply appreciative of the gift from his friends at a surprise party. (AP Wirephoto)

### Unit 2 Dairy Averages Are Listed

Dairy cows on production testing in Unit 2 of the Twin Falls County Dairy Herd Improvement Association during the March average of 41 pounds of butterfat per cow and 1,128 pounds of milk, reports County Agent Donald E. Young. Production figures include all cows on test, including dry ones.

The March report of testing supervisor, Ben Hilton, Filer, showed that 1,178 cows were on test, with 1,008 in production, and 170 dry cows.

In the large herds of over 50 cows Clyde Wright, Filer, had the highest production herd average of 56 pounds of butterfat and 1,538 pounds of milk with 65 cows of a total of 77.

Other large producers include herds with butterfat, milk and total cows and number in production are: Irvin Ehlers and Blair Hall, both Twin Falls, tied with a 53 total pound of butterfat, Mr. Ehlers average being 3, 1,434, 63 and 63; Mr. Hall's average 3, 1,421, 53, 48; Harvey Grindler, Filer, 46, 1,287, 57, 54; another tie occurred between Walter Mathelison, Filer; J. W. Richmond, Buhl, and Russell Riggs. Each of these herds averaged 52 pounds of butterfat, Mr. Mathelison had 21, 875, 97, and 85; Mr. Richmond 42, 1,183, 47, and 83; Russell Filer, 42, 1,063, 59, 56, and Gary Custer, Twin Falls, 39, 1,333, 63, 59.

In the medium size herds of 25-50 cows, William Gregor, Filer, was high with 49, 1,479, 63 and 49; Everett Andrews, Filer; and Warren Hartz, Buhl, were tied with 49 pounds of butterfat. Andrews' herd averaged 46, 1,558, 33 and 36; Warren Hartz 46, 1,238, 44 and 39; Gaylord Drown, Filer, 42, 1,189, 63 and 31; Earl W. Wright, Mullan, 42, 1,224, 25 and 23; Dale Williams, Filer, 41, 1,065, 35, 63 and 20; Laurence Habicht, Filer, 40, 1,224, 25 and 24; Roger Stafford, Kimberly, 29, 1,119, 49 and 32; and W. H. Pearson, Hagerman, 29, 1,127, 49 and 36.

In the small herds, under 25 cows, Carl Walzel, Filer, was high with 50, 1,423, 21 and 21; and was followed by Mike Holloway, Twin Falls, with 29, 1,202, 7 and 5.



WENDELL JOHNSON, left, officer of the Richfield Cattle Association, discusses the new restoration grazing schedule for his allotment with Larry Barstley, Wood River Area manager for the Bureau of Land Management. The plan was recently put into effect by the Bureau of Land Management in cooperation with the Richfield Cattle Association members.

### Marketing Unit Accepts Bid On Wool

SHOSHONE — The Lincoln County Marketing Association has accepted the bid of Nicholas and Company for 42.5 cents for their 1968 wool pool.

Walter Gooding, Salt Lake City, was buyer for the company. The 8,800 fleeces sold will be picked up May 20.

Portland Hide and Wool, represented by Mrs. Elizabeth Sims Gooding, purchased the Elmore county pool of 800 fleeces at the same meeting, on a bid of 39 cents. This was for range wool.

The Lincoln County pool sale includes one per cent tag, 31.5-cent, one-third off for crutching, 5 cents off for burry, scud, short or excessively dirty wool and three per cent discount on non-aged wool.

Other bids for the Lincoln county pool included 40.73 from Portland Hide and Wool and 40.43 from Caron Spinning, represented by Jim Condran.

FOR FAST-SELLING RESULTS USE TIMES-NEWS WANT ADS

### Lenders Have Big Role On Future Of Agriculture

EL PASO, Tex. — "Lenders will play a crucial role in shaping the future structural form of agriculture," according to Vernon Wright, deputy governor and director of short-term credit service of the Farm Credit Administration.

Speaking here at the annual meeting of stockholders and patrons of the Federal Intermediate Credit Bank of Houston, Wright warned lenders not to be conservative and slow in devising new methods of financing farmers.

"If farmers are forced to use costly, make-shift credit arrangements throughout the country," he said, "we have lost one per cent of their non-real estate credit from production credit associations," Wright stated. "Now they get about 14 per cent of such credit from production credit associations," he continues. "These percentages are figured on total credit includes such as merchants, dealers and individuals as well as such institutional lenders as commercial banks."

Farmers and ranchers generally are using more and more credit each year in an effort to substitute capital for labor in the form of more efficient equipment and new technology. They also need to borrow more just to meet rising production expenses," Wright explained. He expects this trend to continue for some time.

Wright pointed out that De-Ann Branch of Michigan State University estimates farmers credit needs will more than double by 1990. Banks estimate farmers and ranchers total credit will total over \$100 billion by then.

Farmers and ranchers have built a strong foundation for supplying their future credit needs through the 12 Federal intermediate credit associations which share of the increased agricultural credit requirements," Wright pointed out.

"Farmers and ranchers now have \$341 million invested in their production credit associations," Wright explained. "In addition, they have built new worth reserves in their associations totaling \$250 million to help assure the associations' ability to serve farmers in the future."

"These associations, obtaining their loan funds from investors in the Nation's money markets through the 12 Federal intermediate credit banks like the one at Houston, are farmer and rancher controlled as well as owned," Wright points out. "Member-users elect their boards of directors. The associations make loans to their members to operate their farms and ranches and to finance capital improvements to the farm, ranch or home."

non-real estate credit from production credit associations," Wright stated. "Now they get about 14 per cent of such credit from production credit associations," he continues. "These percentages are figured on total credit includes such as merchants, dealers and individuals as well as such institutional lenders as commercial banks."

Farmers and ranchers generally are using more and more credit each year in an effort to substitute capital for labor in the form of more efficient equipment and new technology. They also need to borrow more just to meet rising production expenses," Wright explained. He expects this trend to continue for some time.

Wright pointed out that De-Ann Branch of Michigan State University estimates farmers credit needs will more than double by 1990. Banks estimate farmers and ranchers total credit will total over \$100 billion by then.

Farmers and ranchers have built a strong foundation for supplying their future credit needs through the 12 Federal intermediate credit associations which share of the increased agricultural credit requirements," Wright pointed out.

"Farmers and ranchers now have \$341 million invested in their production credit associations," Wright explained. "In addition, they have built new worth reserves in their associations totaling \$250 million to help assure the associations' ability to serve farmers in the future."

"These associations, obtaining their loan funds from investors in the Nation's money markets through the 12 Federal intermediate credit banks like the one at Houston, are farmer and rancher controlled as well as owned," Wright points out. "Member-users elect their boards of directors. The associations make loans to their members to operate their farms and ranches and to finance capital improvements to the farm, ranch or home."

PHONE 733-4583

**IDAHO BEST, Inc.**

122 4th Avenue South (Truck Lane)

FOR ALL YOUR NEEDS IN FEEDS!

- CHICK STARTER AND GROWER
- LAYING MASH
- DAIRY FEEDS & CALF FEEDS
- CATTLE FEEDS • HORSE FEEDS
- SHEEP & SWINE FEEDS
- DOG AND RABBIT FEEDS

WHATEVER YOUR NEEDS IN ANY PARTICULAR TYPE FEED SEE US

PELLETS or MASH

IN BULK OR BAG . . . for every need . . . get our prices

LIQUID FERTILIZERS ARE DIFFERENT

THEY CAN BE

- PUT AT ANY DEPTH
- METERED DURING APPLICATION
- MIXED IN ANY RATIO

**FARM SERVICE**

LIQUID FERTILIZERS

Immediately Available

Made In Our Plant Tested In Our Laboratory

YOU ARE SURE OF GETTING THE BEST AT

**FARM SERVICE**

KIMBERLY B3341

Grange opposes Library Proposal

Members of the Twin Falls Grange opposed the traveling library proposal during a recent meeting. Members said they opposed it unless it can be supported by means other than taxation.

The group also expressed the idea of free toll service on telephone, but support the idea of signs on slow moving farm machinery on roads.

Gardening was discussed by Lloyd Mitchell.

John Urrutia Is Club President

SHOSHONE — John Urrutia is the president of the Charley Horse 4-H Club formed here.

Carmen Oneto is vice president; Candace Conner, secretary-treasurer; and Christy Harris, reporter.

Christy Harris will lead a discussion on "How to Break a Colt to Lead" when the club meets at her home April 30. Leland Robinson is the leader of the newly formed club.

### Grange Opposes Library Proposal

Members of the Twin Falls Grange opposed the traveling library proposal during a recent meeting. Members said they opposed it unless it can be supported by means other than taxation.

The group also expressed the idea of free toll service on telephone, but support the idea of signs on slow moving farm machinery on roads.

Gardening was discussed by Lloyd Mitchell.

### Meeting Set

TUTTLE — The Tuttle Grange has voted to have only one meeting a month for the summer, beginning in May. The meetings will be on the regular first meeting date and will convene at 8:30 p.m.

Members also voted to go on record opposing the higher telephone rates with toll in place and instructed the secretary, Mrs. Glenn Patterson, to inform the Idaho State IJUG of its decision.

### Richfield Ranchers Take Part In New Grazing Plan

The members of the Richfield Cattle Association recently agreed to a detailed allotment management plan for their allotment.

The allotment is located immediately north of the Richfield farming area and contains approximately 21,000 acres of federal land.

The plan specifies that the cattle will be grazed under a five-pasture restoration grazing system which leaves one of five pastures unused each year. This allows the plants to regain vigor and produce seed for re-planting.

The plan is the result of cooperation between association members and Bureau of Land Management personnel. Association members began operating under the new grazing system this spring.

Wendell Johnson, Richfield officer and active member of the association, attended the allotment school that was held in Twin Falls during the week of Feb. 28-March 1, 1968. Mr. Johnson's knowledge of the system and general interest will help in the management of the allotment.

### Idaho Third Top Sugar Producer

Eleven per cent of the nation's beet sugar was produced in the state of Idaho in 1967. The Gem State's four sugarbeet processing facilities turned out 5,065,021 100-pound bags of the sweet refined product, the third highest production of any state.

Plants of the Amalgamated Sugar Co. at Nampa, Twin Falls and Paul were credited with production of slightly more than 4.6 million bags of production. The Idaho Falls plant of Utah-Idaho sugar company had an output of nearly 1.4 million bags.

California was the country's leading beet sugar processor in 1967, with a production of nearly 10.3 million bags. Colorado was second, at nearly 7.8 million bags.

Amalgamated officials said that Idaho will likely pass Colorado in 1968 if the nation's number two processor, The Idaho Beet Crop was substantially larger than Colorado's last year and, obviously, the crop determines production levels.

Amalgamated announced a major expansion at its Nampa factory last month and said the enlargement would bring Idaho into a virtual tie with Colorado in plant capacity too.

Nampa will be increased from a present 4,800 tons of daily slicing capacity to 9,400 tons over the next 18 months. It will be the largest in the country by more than 2,000 tons.

### Cub Scouts Give Program To Grangers

HAGERMAN — Cub Scout Pack No. 35 presented the program for the Hagerman Valley Grange meeting Monday evening, following a potluck dinner.

Den 1, under the direction of Mrs. James Warren, presented the flag presentation. Den 2, under the direction of den mother Mrs. Bob Turner, lead songs and Den 3 with Mrs. Dwayne Grimes as den mother, presented a skit.

Mrs. Stanley Haskovec, home economics chairman, announced Mrs. Jim Bright was second place in the cooking contest sponsored by Idaho Power Co. and Buhl appliance dealers, Mrs. Bright received an electric appliance and the Grange received a cash prize the sponsoring. Her cooking entry was minted chocolate log in the desert division.

Mrs. M. N. Henley announced a card party will be held at the May 20 meeting and requested members to bring their own table service for the potluck dinner which will precede the card party.

APPLIANCE REPAIR

Refrigerators, Ranges, Washing Machines, etc.

House Calls

Trades

**CAMERA CENTER**

(Appliance Dept.) 733-4921

Don't get caught in the rush . . . we're still taking orders for . . .

ROLL-OVER HEADLAND

**FURROW OPENERS**

SIMPLE, TROUBLE-FREE . . . NO MAINTENANCE. OPENS FURROWS AT 3-7.5 MILES PER HOUR.

ALSO ORDER YOUR:

ALFALFA CROWNERS . . . SLED CORRUGATORS . . . BALED HAY LOADERS . . . CULTIVATOR TOOLS . . . BEET AND POTATO BEDS.

**PAUL EQUIPMENT & WELDING SHOP**

PHONE 438-4272 PAUL, IDAHO

SHOP-AND-SAVE AT-THE NEW FARM & CITY!

SOMETHING SPECIAL FOR THE LADIES!

Westclox Electric Wall Clock

Our Price . . . \$3.98

Special for the Litchfield Big 3.75" dia. Choice White or Beige, Guaranteed!

**CF&I**

We Are Dealers For The Complete Line Of CF&I STEEL POSTS AND WIRE

ALL SIZES SMOOTH NAILS

17¢ in 50 lb. lots or more.

**GARDENER'S SPECIAL!**

Heavy Duty HUNTER RAKE

All purpose lawn and garden rake.

List Price \$3.49

**FARM & CITY**

A DEPENDABLE SOURCE OF SUPPLY

663 MAIN AVE. E., TWIN FALLS 733-5241

**SOIL FERTILITY**

MAKES SEED AND DOLLARS GO WITH SIMPLOT FERTILIZERS

**WEEKLY AGRICULTURAL WEATHER REPORT**

Showing daily high and low temperatures, precipitation and weekly mean temperature for 1967 and current 1968:

| 1967            |    |    |        | 1968          |    |    |        |
|-----------------|----|----|--------|---------------|----|----|--------|
| Date            | Hi | Lo | Precp. | Date          | Hi | Lo | Precp. |
| Apr 10          | 59 | 39 | 0      | Apr 10        | 62 | 33 | 0      |
| 11              | 65 | 29 | 0      | 11            | 73 | 42 | 0      |
| 12              | 49 | 33 | .14    | 12            | 69 | 30 | T      |
| 13              | 55 | 35 | T      | 13            | 47 | 22 | 0      |
| 14              | 64 | 34 | 0      | 14            | 46 | 20 | 0      |
| 15              | 48 | 27 | .05    | 15            | 64 | 37 | 0      |
| 16              | 37 | 25 | .37    | 16            | 54 | 32 | T      |
| 1967 Mean 42.7° |    |    |        | 1968 Mean 45° |    |    |        |

30 years average precipitation for April is .93".

AVERAGE SOIL TEMPERATURE at 4" on April 27 is 44°

**Simplot SOILBUILDERS**

Burley - Rupert - Jerome - Hazelton - Twin Falls

FOR FAST-SELLING RESULTS USE TIMES-NEWS WANT ADS

**ACME**

POTATO PLANTERS

ORDER NOW

- NO PICKS
- MORE PROFIT
- PRECISION PLANTING
- MODEL FOR ALL FARMS

**ACME**

FILER, IDAHO

**PAUL EQUIPMENT & WELDING SHOP**

PHONE 438-4272 PAUL, IDAHO

# BRIDGE

By Jacoby

### PRO AND CON ON UNDERLED ACES

The previous four columns have been written by James Jacoby to describe his new team. Today Jim goes one step further by asking his teammate Bobby Wolff to write about his favorite hand of all time.

**NORTH 18**  
AKJ  
A1097542  
AK63  
Void

**WEST**  
108643  
984  
A1082

**EAST**  
QJ32  
1052  
J9763

**SOUTH (D)**  
87  
KQJ83  
Q7  
KQ4

East-West Vulnerable  
West North East South

Pass 3 W Pass 4 W  
Pass 5 W Pass 1 W  
Pass 6 W Pass 6 W  
Pass 7 W Pass 6 W

Opening lead—4

quant for me to decide not to lead either of them.

"Fortunately the bidding had been written slowly so that I had time to think over my lead while South was puzzling over his partner's club call. It was hard to decide against the club lead. North clearly had shown that he did not have any clubs. It also seemed pointless to lead a red card.

The suit to attack was spades. North had bid just like a man with the king of spades. I couldn't get two tricks by leading my ace. Maybe an untrickled would work. I led the four of spades. South pondered, played dummy's jack and went down one.

This happy ending reminds us of one of Oswald Jacoby's best plays. He also undressed the ace of spades against a heart slam. Dummy held the queen, declarer the jack. After a low club from dummy, third hand played the 10 of spades instead of the king and declarer made an impossible slam.

### CARD SENSE

Q-The bidding has been:  
West North East South  
Pass 3 W Pass 4 W  
Pass 5 W Pass 1 W  
Pass 6 W Pass 6 W  
Pass 7 W Pass 6 W

Opening lead—4

Bobby writes, "I usually get into the bidding with two aces and five spades, but the unfavorable vulnerability and maybe a sudden burst of caution caused me to pass over South's heart opening. After North's three heart and South's four heart call, I expected to lead against a routine game contract, which is much to my surprise. North cue bid both diamonds and clubs and thereby carried South to a heart slam. I don't often get a find myself on lead against a slam with two aces. It is even less fre-

## Young America's Date-Line

By EILE AND WALT DULANEY

### Does A Fall Make A Girl Look "Cheap?"

Dear Walt: Please write your opinion of this question in the column. Do you think that a girl who wears a fall of vinyl hair that matches perfectly looks "falso" or "cheap"?—Not-So-Modern-Millie.

Dear Millie: It would depend on the girl. If she's the occasion dictate—the hair—fine. But if extra locks obscured her good sense and made her adopt a too elaborate hairdo, then I'd vote "no go."—Eile.

**DAD EATING HABITS**

Dear Walt: My girlfriend (not exactly steady, but just about) has the worst eating habits of anyone I've ever met. I don't know her manners are bad; it's just what she eats.

First of all she's always on a diet even though she doesn't need it. Our family canary eats more than she does. Second, when she does eat it's soft drinks and potato chips and candy bars, and other stuff like that. Because I've been in athletic training so long, I know what this sort of diet does to you; but she just gets mad when I tell her. Can you help? I hate to see her do this to her health.

Dear Marco: Although I second your concern, I hope you'll ease off the "early warning" system. It's not unlikely that she's just getting mad when you push the "healthy life" the more greasy chips and more nutrition she's rebelling against. I'd say a doctor or dermatologist will have to pick up the pieces but for now, let her eat what she wants when you dine together, and don't pry into her "away from you" diet.

Dear Frustrated: Your parents are quite myopic. Even if you can your 5th year by managing and retreating to your home "forever more," you'll still be a far better guide for your newspaper.

**Complain!** Share it with Teenage Date-Line's readers by writing Eile and Walt in care of a far better guide for your newspaper.

### Major Hoopie

JOE, AS AN AREA BUSINESSMAN—CHAMPION CHAMPION—WHAT ARE THE KEY ISSUES AND IT'S HOW CAN I RALLY MY BROTHER OWLS?

THOSE BIRDS RALLY AROUND A BARRE. REAL GOOD—YOU'VE GOT THE RIGHT IMAGE! BUT FOR ME IT'S INFLATION! I DROP A TIME IN THE CASH—FOR NOW, BY HER CAT—WHAT SHE WANTS WHEN YOU DINE TOGETHER, AND DON'T PRY INTO HER "AWAY FROM YOU" DIET.



"Mother, may I go to the movies now? My dresser drawers are all cleaned out!"

### STAR GAZER

By CLAY R. POLLAN

★ Your Daily Activity Guide ★  
According to the Stars.

To develop message for Saturday, read words corresponding to numbers of your Zodiac birth sign.

|        |               |               |                |
|--------|---------------|---------------|----------------|
| APR 21 | 1 An          | 31 Needed     | 61 Mind        |
| APR 22 | 2 You         | 32 Power      | 62 You         |
| APR 23 | 3 Luck        | 33 Love       | 63 Ideas       |
| APR 24 | 4 Activities  | 34 Accomplish | 64 Energy      |
| APR 25 | 5 Power       | 35 Luck       | 65 Personality |
| APR 26 | 6 In          | 36 Fun        | 66 For         |
| APR 27 | 7 Older       | 37 Beating    | 67 Satisfy     |
| APR 28 | 8 Money       | 38 Old        | 68 News        |
| APR 29 | 9 Prosperity  | 39 Machinery  | 69 And         |
| APR 30 | 10 Will       | 40 Spring     | 70 Aid         |
| MAY 1  | 11 Success    | 41 Wages      | 71 Work        |
| MAY 2  | 12 Money      | 42 Wages      | 72 Work        |
| MAY 3  | 13 Prosperity | 43 Wages      | 73 Work        |
| MAY 4  | 14 Money      | 44 Wages      | 74 But         |
| MAY 5  | 15 Prosperity | 45 Wages      | 75 Work        |
| MAY 6  | 16 Money      | 46 Invest     | 76 Development |
| MAY 7  | 17 Prosperity | 47 Wages      | 77 Work        |
| MAY 8  | 18 Money      | 48 Wages      | 78 Aid         |
| MAY 9  | 19 Prosperity | 49 Wages      | 79 Work        |
| MAY 10 | 20 Money      | 50 Accents    | 80 Avoid       |
| MAY 11 | 21 Prosperity | 51 Wages      | 81 Humail      |
| MAY 12 | 22 Money      | 52 You        | 82 Money       |
| MAY 13 | 23 Prosperity | 53 You        | 83 Money       |
| MAY 14 | 24 Money      | 54 You        | 84 Money       |
| MAY 15 | 25 Prosperity | 55 You        | 85 Money       |
| MAY 16 | 26 Money      | 56 You        | 86 Money       |
| MAY 17 | 27 Prosperity | 57 You        | 87 Money       |
| MAY 18 | 28 Money      | 58 You        | 88 Money       |
| MAY 19 | 29 Prosperity | 59 You        | 89 Money       |
| MAY 20 | 30 Money      | 60 You        | 90 Money       |

### STAR GAZER

By CLAY R. POLLAN

★ Your Daily Activity Guide ★  
According to the Stars.

To develop message for Sunday, read words corresponding to numbers of your Zodiac birth sign.

|        |     |            |             |
|--------|-----|------------|-------------|
| APR 21 | 111 | 31 Outlook | 61 Troubles |
| APR 22 | 112 | 32 Year    | 62 Year     |
| APR 23 | 113 | 33 Year    | 63 Year     |
| APR 24 | 114 | 34 Year    | 64 Year     |
| APR 25 | 115 | 35 Year    | 65 Year     |
| APR 26 | 116 | 36 Year    | 66 Year     |
| APR 27 | 117 | 37 Year    | 67 Year     |
| APR 28 | 118 | 38 Year    | 68 Year     |
| APR 29 | 119 | 39 Year    | 69 Year     |
| APR 30 | 120 | 40 Year    | 70 Year     |
| MAY 1  | 121 | 41 Year    | 71 Year     |
| MAY 2  | 122 | 42 Year    | 72 Year     |
| MAY 3  | 123 | 43 Year    | 73 Year     |
| MAY 4  | 124 | 44 Year    | 74 Year     |
| MAY 5  | 125 | 45 Year    | 75 Year     |
| MAY 6  | 126 | 46 Year    | 76 Year     |
| MAY 7  | 127 | 47 Year    | 77 Year     |
| MAY 8  | 128 | 48 Year    | 78 Year     |
| MAY 9  | 129 | 49 Year    | 79 Year     |
| MAY 10 | 130 | 50 Year    | 80 Year     |
| MAY 11 | 131 | 51 Year    | 81 Year     |
| MAY 12 | 132 | 52 Year    | 82 Year     |
| MAY 13 | 133 | 53 Year    | 83 Year     |
| MAY 14 | 134 | 54 Year    | 84 Year     |
| MAY 15 | 135 | 55 Year    | 85 Year     |
| MAY 16 | 136 | 56 Year    | 86 Year     |
| MAY 17 | 137 | 57 Year    | 87 Year     |
| MAY 18 | 138 | 58 Year    | 88 Year     |
| MAY 19 | 139 | 59 Year    | 89 Year     |
| MAY 20 | 140 | 60 Year    | 90 Year     |

### Famous Duos

ACROSS

1 and 10a: (4 letters)  
2 Letter and (4 letters)  
3 (4 letters)  
4 (4 letters)  
5 (4 letters)  
6 (4 letters)  
7 (4 letters)  
8 (4 letters)  
9 (4 letters)  
10 (4 letters)  
11 (4 letters)  
12 (4 letters)  
13 (4 letters)  
14 (4 letters)  
15 (4 letters)  
16 (4 letters)  
17 (4 letters)  
18 (4 letters)  
19 (4 letters)  
20 (4 letters)  
21 (4 letters)  
22 (4 letters)  
23 (4 letters)  
24 (4 letters)  
25 (4 letters)  
26 (4 letters)  
27 (4 letters)  
28 (4 letters)  
29 (4 letters)  
30 (4 letters)  
31 (4 letters)  
32 (4 letters)  
33 (4 letters)  
34 (4 letters)  
35 (4 letters)  
36 (4 letters)  
37 (4 letters)  
38 (4 letters)  
39 (4 letters)  
40 (4 letters)  
41 (4 letters)  
42 (4 letters)  
43 (4 letters)  
44 (4 letters)  
45 (4 letters)  
46 (4 letters)  
47 (4 letters)  
48 (4 letters)  
49 (4 letters)  
50 (4 letters)  
51 (4 letters)  
52 (4 letters)  
53 (4 letters)  
54 (4 letters)  
55 (4 letters)  
56 (4 letters)  
57 (4 letters)  
58 (4 letters)  
59 (4 letters)  
60 (4 letters)

|     |     |     |     |     |     |     |     |     |     |     |
|-----|-----|-----|-----|-----|-----|-----|-----|-----|-----|-----|
| 1   | 2   | 3   | 4   | 5   | 6   | 7   | 8   | 9   | 10  | 11  |
| 12  | 13  | 14  | 15  | 16  | 17  | 18  | 19  | 20  | 21  | 22  |
| 23  | 24  | 25  | 26  | 27  | 28  | 29  | 30  | 31  | 32  | 33  |
| 34  | 35  | 36  | 37  | 38  | 39  | 40  | 41  | 42  | 43  | 44  |
| 45  | 46  | 47  | 48  | 49  | 50  | 51  | 52  | 53  | 54  | 55  |
| 56  | 57  | 58  | 59  | 60  | 61  | 62  | 63  | 64  | 65  | 66  |
| 67  | 68  | 69  | 70  | 71  | 72  | 73  | 74  | 75  | 76  | 77  |
| 78  | 79  | 80  | 81  | 82  | 83  | 84  | 85  | 86  | 87  | 88  |
| 89  | 90  | 91  | 92  | 93  | 94  | 95  | 96  | 97  | 98  | 99  |
| 100 | 101 | 102 | 103 | 104 | 105 | 106 | 107 | 108 | 109 | 110 |



**TRIMMING EVERGREENS:** What's the best way to trim an evergreen? It all depends upon your taste.

There are two ways to trim evergreens. Keep them sheared or you can "pinch" them, that is cut out individual branches here and there to get away from the sheared effect. Some people object to shearing because they say it is highly artificial, producing a shrub that looks like a bowling ball or a lollipop, or an inverted ice cream cone.

This may be true, but it's a better than allowing an evergreen to grow wild so that it hides your house. For the average homeowner shearing is the easiest way to maintain an evergreen. However, keep in mind that not all evergreens should be sheared. It's not natural to shear a Colorado Blue Spruce so that it looks round. These look best when allowed to grow up right.

Also, you do not shear either a spruce or a spruce juniper. But you can shear a spreading Japanese Yew into a round ball, and you can trim an upright yew to look like a lollipop.

How to FOLL BIRDS: Check out the holes in your scarrows, whirling discs and other gadgets have been used to seal off birds' nests with varying degrees of success. A new method netting produced by Dupont and made of plastic is the latest to get your attention, and we plan to test it this summer on our plants.

**HYDRANGEA BUSHES DON'T BLOOM:** The Florist's hydrangea (*H. macrophylla*) is one of the most common and are produced by chemical manipulation by the florist.

An alkaline soil ("wee") produces pink or pinkish flowers and an acid soil ("sour") produces blue flowers. Plants in the intermediate acidities develop unpleasant mixtures of purple-pinkish or bluish flowers.

After your finishes flowering plant outdoors (in name pots), then in fall bring it indoors and keep it in a box in a cellar, along with light, tight and water once in a while. In spring, return the potted plant outdoors and it will flower.

If you leave the florist hydrangea outdoors during winter, the buds freeze, and this is why you hydrangea produces no flowers. Seeds, it's save my hands from the cold, and some poor culture guide has good tips also on raising big, blocky peppers in your garden.

**OUR OAKS ARE IN TROUBLE:** Oak trees, especially pin oaks have been plagued by the found oak gall wasp, a pest which has taken a heavy toll of oaks in many areas.

This wasp has the uncanny ability to cause the tree to form perfect condition for growth and development of the next generation of wasps. Galls on oaks are a sign the pest is present. An arborist tells me there is

**WATERING PLANTS:** Canadian Hemlock can be sheared any time (fall or winter) and evergreens can be trimmed any time of the year, although best when allowed to grow upright. Pines and spruce are pruned in spring—cutting-off-in-the-early-summer when new needles are half developed. You can also cut the top back. If you wish, starting seeds, so your tiny seedlings came up, then topped over and died? This is a common occurrence when you start seed in soil mixes which have manure, or garden soil in them.

**STARTING SEEDS:** So your tiny seedlings came up, then topped over and died? This is a common occurrence when you start seed in soil mixes which have manure, or garden soil in them.

**FLORIST'S HYDRANGEA:** Florist's hydrangea produces no flowers. Seeds, it's save my hands from the cold, and some poor culture guide has good tips also on raising big, blocky peppers in your garden.

**OUR OAKS ARE IN TROUBLE:** Oak trees, especially pin oaks have been plagued by the found oak gall wasp, a pest which has taken a heavy toll of oaks in many areas.

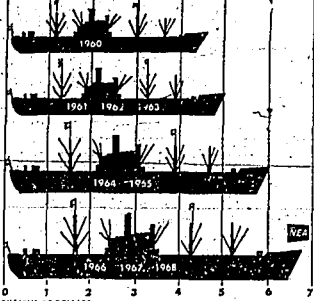
**WATERING PLANTS:** Canadian Hemlock can be sheared any time (fall or winter) and evergreens can be trimmed any time of the year, although best when allowed to grow upright. Pines and spruce are pruned in spring—cutting-off-in-the-early-summer when new needles are half developed. You can also cut the top back. If you wish, starting seeds, so your tiny seedlings came up, then topped over and died? This is a common occurrence when you start seed in soil mixes which have manure, or garden soil in them.

**OUR OAKS ARE IN TROUBLE:** Oak trees, especially pin oaks have been plagued by the found oak gall wasp, a pest which has taken a heavy toll of oaks in many areas.

**OUR OAKS ARE IN TROUBLE:** Oak trees, especially pin oaks have been plagued by the found oak gall wasp, a pest which has taken a heavy toll of oaks in many areas.

**OUR OAKS ARE IN TROUBLE:** Oak trees, especially pin oaks have been plagued by the found oak gall wasp, a pest which has taken a heavy toll of oaks in many areas.

**RIISING AGRICULTURAL EXPORTS**



**STEADILY-RISING** agricultural exports, expected this year to match 1967's record high of \$6.5 billion, are a major factor in the favorable U.S. balance of trade. Last year, 67 per cent of farm sales of rice were for export as well as about half the sales of such other major commodities as wheat, cotton and grain sorghum.

**2 Resolutions Passed By Group**

Drawn Members of the Cedar Grove Grange have approved two resolutions to be presented at the state grange. They concern the organizing of bargaining for farmers and crop reports.

**QUESTION OF THE WEEK:** D. R. of Twin Falls: "Please tell me why I can't grow big sweet onions. Ours were a failure last year."

I'll let one of our readers answer this as her letter came in with yours: "We set our onion plants out as soon as the ground can be worked, because they will stand quite a bit frost. Plants are set four to five inches apart in rows one and one-half to two feet apart. Keep these onions watered during the summer as this makes them sweet and sweet. Keep on top needed and cultivated for best growth."

Another readers uses yellow globe-onion-seed (small-bulbs). If any happen to go seed, she pinches off the seed pods immediately. This causes the onions to grow larger. When the tops die down, onions are pulled up and put in a dry place to cure. If you want early bunching onions or large mature bulbs which will keep well into the winter, try the yellow Globe-onion-seed. There is also a white Ebenezer seed mostly to produce mild-flavored early bunching onions.

**Note:** Onion "sets" are small onions, 1/2 to 3/4 inches across, produced from year to year. Onion "plants" are young green plants sold in a bunch, running any where from 25 to 110 plants per bunch. Both are a bargain and both worth growing.

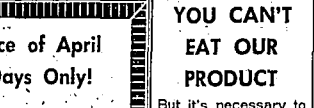
**G. T. of Tullin:** "We've started a compost pile and hope you can tell us if pine needles can be used. I have 2400 lbs. of them. Should pile be stirred?"

Evergreen needles can be added, although they take longer to decompose. Use them. 2400 lbs. scatter a light coating of lime over the pile. No need to add Vermiculite. Keep the pile wet and covered with plastic sheet, and no stirring will be necessary.

**FOR FAST-SELLING RESULTS USE TIMES-NEWS WANT ADS**

If walnuts are planted as soon as the ground is workable, they will stand quite a bit frost. Plants are set four to five inches apart in rows one and one-half to two feet apart. Keep these onions watered during the summer as this makes them sweet and sweet. Keep on top needed and cultivated for best growth."

**Gather the nuts as fast as they ripen.** When walnuts are allowed to remain on the ground and be exposed to the elements, a combination of oxygen, mold-



**YOU CAN'T EAT OUR PRODUCT**

But it's necessary to farmers and ranchers to buy the same. We've been extending sound long-term agricultural credit to farmers and ranchers for the past 50 years. So, use our credit your long-term credit needs.

**FEDERAL LAND BANK ASSOCIATION OF TWIN FALLS**

RUPERT  
426 E. 3rd  
433-4631

**BURLEY**  
GLEN VALLEY  
1245 Overland  
678-4347

**GOODING**  
111 W. 3rd  
934-4921

**SALE! LUMBER & BUILDING SUPPLIES**

**Harney's Bldg. Supply**  
**KIMBERLY:** OVERSTOCK AND SOME CLOSEOUT ITEMS. COMPLETE INVENTORY AT TERRIFIC SAVINGS!  
**WHY? TO TURN MERCHANDISE INTO CASH!**

**3 DAY Sale!** APRIL 20-21-22  
**OPEN ALL DAY SATURDAY** **OPEN ALL DAY MONDAY**  
**AND OPEN ALL DAY SUNDAY**

**LUMBER**

2 x 4 Economy and Better surfaced ..... 29c  
2 x 4-8' No. 2 and better surfaced ..... 64c  
2 x 8-16' Douglas coast fir (surfaced) 90 pieces or more ..... 1.79  
2 x 6-RL Surfaced Economy and Better. Per thousand, by unit ..... 54.00  
2 x 4-2 x 6-2 x 8-2 x 12 No. 2 and better, 1000 ft. or more only. Per M ..... 110.00  
2 x 6-6' No. 2 and better ..... 42c  
2 x 4-6' Utility and better (in punks) each ..... 19c

**PLYWOODS**

1 1/2" thick Tongue and Groove \$5.95  
Plywood 2-4-12 per sq. ft. sheet  
1/2" Shear Plywood 4x8 and 4x6, .... per sq. ft. in full sheets  
1/2" Select Dark Birch Plywood 4x8  
Only .... per sq. ft. in full sheets  
5/8" Fir Shear Plywood  
Only .... per sq. ft. in full sheets  
Plywood, 2x4, 2x6, 2x8, 2x10  
per sq. ft. .... 4 1/2c  
1/2" Fir Texture 1-11 4x8  
Siding Only .... per sq. ft. 20c

1 1/2" Fibreglass Insulation  
Only .... per sq. ft. 3 1/2c  
2" Fibreglass Insulation  
Only .... per sq. ft. 4c  
Full Wall Fibreglass Insulation  
Only .... per sq. ft. 7c-  
6 inch Fibreglass Insulation  
Only .... per sq. ft. 11c

**16x16' Overhead Sectional Door** Reg. \$500.00 Sale Price \$440.00  
1-8'x7' Overhead Door Reg. 72.50 Now 39.00  
Dutch Lap Asphalt Shingles Only .... per 100 sq. ft. \$8.90  
90 Lb. Green Slate Roofing Only .... per roll 3.85  
2 1/2 x 1/2 Com Strip Only .... per lineal foot 10c  
Fire-Resistant Coating In 100 lb. tote Only .... per gallon 90c  
White Interior Latex Paint Only .... per gallon \$1.49  
Exterior Acrylic Latex Reg. 7.50 gallon. Close out only .... gallon 3.95  
All Paints and Varnishes In orders of \$25.00 or more ..... 25% off  
Houston Wood Preservative In 55 Gallon Drum, take off for only .... per gallon 75c  
16d Box Nails ..... Only \$6.96 per 50 lb. carton  
8d Box Nails ..... Only \$7.25 per 50 lb. carton

**Lovely 3 bedroom Home**

1 1/2" Both Completed Exterior Paint outside. Full wall Sidewall Insulation, 6" Fibreglass Ceiling Insulation, 1/2" Sheetrock-throughout, Sheetrock-Fire-Resistant Ceiling Textured and Painted, Double Floor, All inside door Jambin, Labor and Material for this lovely 1,175 Sq. Ft. Home

Only ..... \$4,395.00

This Home is wired to Meet 1966 State Electrical Code and necessary Plumbing Roughed in. In order to include all finish sheetrock, Galvalume, knee roofing and siding (you get it wh.)  
Only ..... \$10.45 per square  
1/2 x 6 C CEDAR SIDING  
Only ..... \$90.00 per 100 Sq. feet  
1/2 x 8 C CEDAR SIDING  
Only ..... \$110.00 per 100 Sq. feet  
1/2 x 10 C CEDAR SIDING  
Only ..... \$160.00 per 100 Sq. feet  
CEDAR SIDING  
Only ..... \$9.88 per 100 Sq. feet

**EQUIPMENT**

1-10' Dual Wheel Stake Flat Bed Trailer ..... Only \$140.00  
New 8'x16' Storage Building ..... Only \$90.00  
1-Pipe Threader 3/4" to 1" ..... Only \$12.50  
3 Sata Platform Scales  
1 for \$15, 1 for \$40, 1 for \$50  
6 Concrete Tamper ..... each \$6.00  
Only ..... \$290.00  
with brakes  
1/2 x 8 Redwood Fencing  
Only ..... per thousand lineal feet \$75.00  
1/2 x 6 Redwood Fencing  
Only ..... per thousand lineal feet \$40.00  
Only ..... per thousand lineal feet \$13.95

**ALL SALES CASH - NO REFUNDS**

**BUILDING HARNEY'S SUPPLY**  
**KIMBERLY - PHONE 423-5516**

**SPECIAL!** Balance of April 10 Days Only!

With Each OIL and FILTER Change We'll Give a **Free LUBE JOB.**

**TIRE ROTATION** \$1.00  
**WASH & VAC** \$2.00  
All 4 wheels  
Cars or pickups

**WHEEL PACK** \$2.50  
**WHEEL BALANCE** \$1.00  
2 wheels  
Per wheel

**AT OUR TWIN FALLS SERVICE STATION-ONLY!**

**WHEEL OIL**  
**KIMBERLY ROAD 733-7033**