

Houston Is Site Of 9th Heart Transplant

HOUSTON, Tex. (AP) — A 47-year-old Arizona resident who had been married only six months...

The Baylor University medical team was headed by Dr. Denton A. Cooley, chief of cardiovascular surgery at St. Luke's Hospital...

Final Water Is Turned Into Canal

JEROME — The final 500 seconds of water were expected to be turned back into the North Side Canal...

He said 2,000 second feet was turned out at Milner when the break in the dam on the Davy Harding farm...

He said his mother telephoned from Boston and said she had no idea that would be getting a new heart when he left home five days ago...

He said he was happy about this, that his father may live, he said. The son said his mother telephoned from Boston...

Mr. Finkelstein noted that it would probably be Sunday here when the water reached the Blissville area at the end of the system. The first Segregation district, at Eden and Hazelton, was not affected by the break.

Idaho Election Law Revision Is Given Tentative Approval

BOISE (AP) — An Idaho Legislative Council committee today approved tentatively a revision of Idaho election law...

The uniform procedure is part of a complete revision of Idaho law drafted by the council's committee on election laws.

The primary election date under the law would be changed to the Tuesday following the second Monday in September.

At present, candidates for state and congressional offices must be endorsed by more than 20 percent of the delegates...

Provisions for independent candidates also are retained. The primary election date under the law would be changed...

At present, candidates for state and congressional offices must be endorsed by more than 20 percent of the delegates...

U.S. And Vietnam Agree To Hold Peace Talks In Paris



PRESIDENT JOHNSON answers questions of newsmen in a crowded East Room of the White House Friday. He covered a broad range of subjects including the announcement that preliminary peace talks on Vietnam may begin in Paris on May 10.

LBJ Speaks Out At Conference

WASHINGTON (AP) — President Johnson, withholding a commitment to campaign for his party's presidential nomination, struck out today at those who by pursuing personal ambitions divide the country.

He told members of Congress to vote on his tax increase instead of trying to "blackmail someone."

United States is agreeable to starting preliminary Vietnam peace talks in Paris about May 10.

Johnson said he would discuss the question of campaigning for the Democratic nomination "after the convention" next August.

But, after the reference to "personal ambitions," Johnson said there are "too many people thinking too much of themselves and too few people thinking of country."

He skirted a direct answer when asked what qualities he wanted to see in the man who would succeed him in the White House.

At present, candidates for state and congressional offices must be endorsed by more than 20 percent of the delegates...

Provisions for independent candidates also are retained. The primary election date under the law would be changed...

At present, candidates for state and congressional offices must be endorsed by more than 20 percent of the delegates...

Provisions for independent candidates also are retained. The primary election date under the law would be changed...

At present, candidates for state and congressional offices must be endorsed by more than 20 percent of the delegates...

By JOHN M. HIGHTOWER WASHINGTON (AP) — The United States and North Vietnam agreed today to hold preliminary peace talks in Paris next Friday or a few days thereafter.

President Johnson announced at a 10 a.m. news conference he had sent word to Hanoi that he accepts the time and place for the talks.

Johnson said he was informed of the North Vietnamese agreement at 1 a.m. today. He then conferred with Secretary of Defense Clark M. Clifford, Secretary of State Dean Rusk and other high officials and made his announcement.

Hanoi announced its purpose in the talks would be to decide with the U.S. side the unconditional cessation of hostilities, the States of its bombing and all other acts of war against the Democratic Republic of Vietnam.

Johnson ordered March 31 as a final date for the talks. North and South Vietnam had agreed to stop the bombing of Hanoi, would show "flexibility" in its military operations.

But U.S. officials said Hanoi since early March has greatly increased infiltration and weapons into South Vietnam.

Asked about this today Johnson said "we have been quite concerned" about the North Vietnamese expanding infiltration.

The President warned the Paris talks would be only the "first step" toward bringing the long and bloody war in South Vietnam to a close.

Let me sound a precaution. Let me sound a precaution. Let me sound a precaution. Let me sound a precaution.

Officers Are Installed By Women's Club

MURLEY — New officers were elected and installed Friday morning at the final day's session of the 50th annual convention of the Idaho Federation of Women's Clubs at the Ponderosa.

Mrs. Nellie Johnson, Grace, was elected president; Mrs. Marjorie Vogel, Boise, is first vice president; Mrs. Vera Hedlund, St. Maries, second vice president; Mrs. Karen Falter, Twin Falls, third vice president; Mrs. H. Schuchman, Caldwell, recording secretary; Mrs. James Abbott, Swan Lake, treasurer and Mrs. Joyce Anderson, Albion, was elected secretary.

Mrs. Don Samuelson, who was elected to speak at the luncheon, said "I am not a feminist, but I am a woman."

Friday morning she would be here for the final luncheon Friday noon which was in honor of the retiring president, Mrs. Vera Hedlund, which hosted the event.

Awards were presented at the Thursday night banquet.

Friday sessions of the conference at the Holiday Inn covered discussions of "Interlibrary and Intra-library Cooperation" by four officials representing different phases of library services.



AVERELL HARRIMAN, LEWELLYN THOMPSON, XUYAN THUY are possible negotiators at the proposed peace talks in Paris.

Enemy Counterattack Is Crushed Near Dong Ha

By GEORGE ESPER SAIGON (AP) — U.S. forces crushed a North Vietnamese counterattack near Dong Ha Thursday climaxing four days of fighting in the northeast corner of South Vietnam in which allied troops reported 1,303 of the enemy killed.

The President warned the Paris talks would be only the "first step" toward bringing the long and bloody war in South Vietnam to a close.

Let me sound a precaution. Let me sound a precaution. Let me sound a precaution. Let me sound a precaution.

Officers Are Installed By Women's Club

MURLEY — New officers were elected and installed Friday morning at the final day's session of the 50th annual convention of the Idaho Federation of Women's Clubs at the Ponderosa.

Mrs. Nellie Johnson, Grace, was elected president; Mrs. Marjorie Vogel, Boise, is first vice president; Mrs. Vera Hedlund, St. Maries, second vice president; Mrs. Karen Falter, Twin Falls, third vice president; Mrs. H. Schuchman, Caldwell, recording secretary; Mrs. James Abbott, Swan Lake, treasurer and Mrs. Joyce Anderson, Albion, was elected secretary.

Mrs. Don Samuelson, who was elected to speak at the luncheon, said "I am not a feminist, but I am a woman."

Friday morning she would be here for the final luncheon Friday noon which was in honor of the retiring president, Mrs. Vera Hedlund, which hosted the event.

Awards were presented at the Thursday night banquet.

Friday sessions of the conference at the Holiday Inn covered discussions of "Interlibrary and Intra-library Cooperation" by four officials representing different phases of library services.

Friday sessions of the conference at the Holiday Inn covered discussions of "Interlibrary and Intra-library Cooperation" by four officials representing different phases of library services.

Volunteers Sought For March Of Poor

MARKS, Miss. (AP) — Field commanders of the Poor People's Campaign fanned out at us. We headed for a field and in the city in Memphis, Tenn. The march is to be held in this North Delta area today, replete in the city.

After the rally at the courthouse, half of the 600 marchers returned to Memphis in the city buses, chartered at a cost of about \$1,500. The remainder spent the night with residents in the area.

Organizers planned originally for the marchers to sleep in tent camps, but they were unable to do so.

Confusion about the Negroes' plans was blamed by county officials for not supplying the camp sites with electricity and water as promised.

A CBS newsman, Larry Pomroy, reported "All of a sudden we heard this 'plink.' The pilot said somebody must be shooting at us. We headed for a field and in the city in Memphis, Tenn. The march is to be held in this North Delta area today, replete in the city.

After the rally at the courthouse, half of the 600 marchers returned to Memphis in the city buses, chartered at a cost of about \$1,500. The remainder spent the night with residents in the area.

Organizers planned originally for the marchers to sleep in tent camps, but they were unable to do so.

Confusion about the Negroes' plans was blamed by county officials for not supplying the camp sites with electricity and water as promised.

A CBS newsman, Larry Pomroy, reported "All of a sudden we heard this 'plink.' The pilot said somebody must be shooting at us. We headed for a field and in the city in Memphis, Tenn. The march is to be held in this North Delta area today, replete in the city.

After the rally at the courthouse, half of the 600 marchers returned to Memphis in the city buses, chartered at a cost of about \$1,500. The remainder spent the night with residents in the area.

Organizers planned originally for the marchers to sleep in tent camps, but they were unable to do so.

Coordination Of Library Services Urged

By BONNIE DAIRD JONES Times-News Staff Writer

Coordination of public, school and college library services for better accommodation in the reading public was called for Friday during panel discussions of the annual Idaho Library Association Conference in Twin Falls.

Friday sessions of the conference at the Holiday Inn covered discussions of "Interlibrary and Intra-library Cooperation" by four officials representing different phases of library services.

Friday sessions of the conference at the Holiday Inn covered discussions of "Interlibrary and Intra-library Cooperation" by four officials representing different phases of library services.

Friday sessions of the conference at the Holiday Inn covered discussions of "Interlibrary and Intra-library Cooperation" by four officials representing different phases of library services.

Friday sessions of the conference at the Holiday Inn covered discussions of "Interlibrary and Intra-library Cooperation" by four officials representing different phases of library services.

Friday sessions of the conference at the Holiday Inn covered discussions of "Interlibrary and Intra-library Cooperation" by four officials representing different phases of library services.

Friday sessions of the conference at the Holiday Inn covered discussions of "Interlibrary and Intra-library Cooperation" by four officials representing different phases of library services.

Friday sessions of the conference at the Holiday Inn covered discussions of "Interlibrary and Intra-library Cooperation" by four officials representing different phases of library services.

Friday sessions of the conference at the Holiday Inn covered discussions of "Interlibrary and Intra-library Cooperation" by four officials representing different phases of library services.

Friday sessions of the conference at the Holiday Inn covered discussions of "Interlibrary and Intra-library Cooperation" by four officials representing different phases of library services.

End Of Telephone Strike Looms

Picket lines in front of the Twin Falls Mainland States Telephone office today showed Sunday and company said they were hopeful normal telephone operations could resume Monday.

Western Electric employees were voting Friday in Twin Falls in ratification of a massive management agreement negotiated in Washington, D.C. Thursday. The agreement will end a two-and-a-half-week-old strike that saw 200,000 West-

ern Electric employees strike telephone offices throughout the nation.

Only 10 Western Electric employees were involved in Twin Falls, but in honoring the picket line, nearly all local operators walked out of their jobs and remained away since the strike started.

Supervisors have been manning the switchboards here, and Frank Long, district manager of the company, and some employees were working in-hour duty. Help from Boise was also offered and accepted in Twin Falls.

It is not known if ratification of the management agreement will be reached, either in Twin Falls or the nation.

Mr. Long said it should be known by the end of the week if the picket lines will come down and normal operations will begin Monday, he said.

Until then, long distance calls may still expect to hear a male voice when they dial

offered and accepted in Twin Falls.

It is not known if ratification of the management agreement will be reached, either in Twin Falls or the nation.

Mr. Long said it should be known by the end of the week if the picket lines will come down and normal operations will begin Monday, he said.

Daily Weather Report

From Times-News 24-Hour Weather Bureau Wire

Table with columns for National, Temperatures, and Forecast. Includes weather conditions for various cities and temperature ranges.

SUNNY
A Caldwell woman and her 2 1/2 year old son were injured in a traffic accident on the Idaho Power Highway...

Summary, Extended Outlook

High pressure built at the surface and aloft dominates the weather pattern over the Pacific Northwest today. This will bring fair skies and warmer weather over the agricultural valleys of Southern Idaho and Eastern Oregon today...

Hawaii, Alaska, Canada weather report table with columns for location and weather conditions.

Johnson

(Continued From Page One) House, but said the question is not nearly as much the individual's political philosophy...

Idaho weather report table with columns for location and weather conditions.

Man Survives Spetacular Auto Wreck

HOLLISTER — Ronnie E. Bodenshteyn, 27, Twin Falls, was reported to be in good condition Friday at Magic Valley Memorial Hospital where he was taken after a spectacular morning accident...

Gooding Memorial

Mrs. Clara Gooding and Mrs. Ed Morris, both Gooding, and Mrs. Douglas Stewart, Hammett, were admitted to Gooding Memorial Hospital...

Gym Teacher Leaves Note, Disappears

SAN RAFAEL, Calif. (AP) — A 212-pound woman gym teacher fighting for her 12-year-old son's school job was sought as a missing person Friday by the Marin County sheriff's office...

Youth, 18, Held In Burglary Case

An 18-year-old Twin Falls youth was in police custody Friday charged with first-degree burglary of a local grocery store...

Veterans Meet Set At Jerome

JEROME — Officers will be meeting at the Fifth district meeting of Veterans of World War I and World War II...

5 File For Cassia Posts

MURRAY — Only five candidates have filed for various offices in Cassia County by the second day of filing petitions...

One Candidate Files In Lincoln

SHOSHONIE — Only one candidate has filed for the primary election in Lincoln County this far...

Idaho Woman, Twin Falls News In Brief

The documentary civil rights film, 'Agony, U.S.A.' will be shown at 8 p.m. Friday in the Idaho Power Auditorium...

Peace Talks

The Disabled American Veterans and auxiliary will have a regular meeting and election of officers at the American Legion Hall...

Man Survives Spetacular Auto Wreck

HOLLISTER — Ronnie E. Bodenshteyn, 27, Twin Falls, was reported to be in good condition Friday at Magic Valley Memorial Hospital...

Youth, 18, Held In Burglary Case

An 18-year-old Twin Falls youth was in police custody Friday charged with first-degree burglary of a local grocery store...

Signed Into Law

WASHINGTON (AP) — President Johnson signed into law today a bill which imposes criminal penalties for making obscene, abusive or harassing telephone calls across state lines...

Remembrance

1000 participants will take part in a remembrance ceremony in a columbarium located here, Mrs. Beck's High 25 year manager of the Twin Falls Milling and Elevator Co. left last March 23 to accept an executive position with the Red Cross...

Events In Twin Falls

50 and 30 Years Ago — recorded in 'The Twin Falls Chronicle' in the following dates: 1918-1919, 1938-1939...

Remembrance

1000 participants will take part in a remembrance ceremony in a columbarium located here, Mrs. Beck's High 25 year manager of the Twin Falls Milling and Elevator Co. left last March 23 to accept an executive position with the Red Cross...

Remembrance

1000 participants will take part in a remembrance ceremony in a columbarium located here, Mrs. Beck's High 25 year manager of the Twin Falls Milling and Elevator Co. left last March 23 to accept an executive position with the Red Cross...

Remembrance

1000 participants will take part in a remembrance ceremony in a columbarium located here, Mrs. Beck's High 25 year manager of the Twin Falls Milling and Elevator Co. left last March 23 to accept an executive position with the Red Cross...

AP Writer, Seen To

WASHINGTON (AP) — Jay Lovino, a member of the Washington staff of the Associated Press and winner of national awards for his column 'Bill Van Dyke' talking about scores of newspapers, died Thursday...

Negroes At Northwestern Set Demands

EVANSTON, Ill. (AP) — Negro students at Northwestern University set out a list of demands for the school's finance office today...

Man Survives Spetacular Auto Wreck

HOLLISTER — Ronnie E. Bodenshteyn, 27, Twin Falls, was reported to be in good condition Friday at Magic Valley Memorial Hospital...

Youth, 18, Held In Burglary Case

An 18-year-old Twin Falls youth was in police custody Friday charged with first-degree burglary of a local grocery store...

Signed Into Law

WASHINGTON (AP) — President Johnson signed into law today a bill which imposes criminal penalties for making obscene, abusive or harassing telephone calls across state lines...

Remembrance

1000 participants will take part in a remembrance ceremony in a columbarium located here, Mrs. Beck's High 25 year manager of the Twin Falls Milling and Elevator Co. left last March 23 to accept an executive position with the Red Cross...

Remembrance

1000 participants will take part in a remembrance ceremony in a columbarium located here, Mrs. Beck's High 25 year manager of the Twin Falls Milling and Elevator Co. left last March 23 to accept an executive position with the Red Cross...

Remembrance

1000 participants will take part in a remembrance ceremony in a columbarium located here, Mrs. Beck's High 25 year manager of the Twin Falls Milling and Elevator Co. left last March 23 to accept an executive position with the Red Cross...

Remembrance

1000 participants will take part in a remembrance ceremony in a columbarium located here, Mrs. Beck's High 25 year manager of the Twin Falls Milling and Elevator Co. left last March 23 to accept an executive position with the Red Cross...

Remembrance

1000 participants will take part in a remembrance ceremony in a columbarium located here, Mrs. Beck's High 25 year manager of the Twin Falls Milling and Elevator Co. left last March 23 to accept an executive position with the Red Cross...

Library advertisement: (Continued From Page One) Mrs. first started the project in favor of a coordination program...

Negroes At Northwestern Set Demands advertisement: EVANSTON, Ill. (AP) — Negro students at Northwestern University set out a list of demands for the school's finance office today...

Man Survives Spetacular Auto Wreck advertisement: HOLLISTER — Ronnie E. Bodenshteyn, 27, Twin Falls, was reported to be in good condition Friday at Magic Valley Memorial Hospital...

Youth, 18, Held In Burglary Case advertisement: An 18-year-old Twin Falls youth was in police custody Friday charged with first-degree burglary of a local grocery store...

Signed Into Law advertisement: WASHINGTON (AP) — President Johnson signed into law today a bill which imposes criminal penalties for making obscene, abusive or harassing telephone calls across state lines...

Remembrance advertisement: 1000 participants will take part in a remembrance ceremony in a columbarium located here, Mrs. Beck's High 25 year manager of the Twin Falls Milling and Elevator Co. left last March 23 to accept an executive position with the Red Cross...

Remembrance advertisement: 1000 participants will take part in a remembrance ceremony in a columbarium located here, Mrs. Beck's High 25 year manager of the Twin Falls Milling and Elevator Co. left last March 23 to accept an executive position with the Red Cross...

Remembrance advertisement: 1000 participants will take part in a remembrance ceremony in a columbarium located here, Mrs. Beck's High 25 year manager of the Twin Falls Milling and Elevator Co. left last March 23 to accept an executive position with the Red Cross...

Remembrance advertisement: 1000 participants will take part in a remembrance ceremony in a columbarium located here, Mrs. Beck's High 25 year manager of the Twin Falls Milling and Elevator Co. left last March 23 to accept an executive position with the Red Cross...

Remembrance advertisement: 1000 participants will take part in a remembrance ceremony in a columbarium located here, Mrs. Beck's High 25 year manager of the Twin Falls Milling and Elevator Co. left last March 23 to accept an executive position with the Red Cross...

Library advertisement: (Continued From Page One) Mrs. first started the project in favor of a coordination program...

Negroes At Northwestern Set Demands advertisement: EVANSTON, Ill. (AP) — Negro students at Northwestern University set out a list of demands for the school's finance office today...

Man Survives Spetacular Auto Wreck advertisement: HOLLISTER — Ronnie E. Bodenshteyn, 27, Twin Falls, was reported to be in good condition Friday at Magic Valley Memorial Hospital...

Youth, 18, Held In Burglary Case advertisement: An 18-year-old Twin Falls youth was in police custody Friday charged with first-degree burglary of a local grocery store...

Signed Into Law advertisement: WASHINGTON (AP) — President Johnson signed into law today a bill which imposes criminal penalties for making obscene, abusive or harassing telephone calls across state lines...

Remembrance advertisement: 1000 participants will take part in a remembrance ceremony in a columbarium located here, Mrs. Beck's High 25 year manager of the Twin Falls Milling and Elevator Co. left last March 23 to accept an executive position with the Red Cross...

Remembrance advertisement: 1000 participants will take part in a remembrance ceremony in a columbarium located here, Mrs. Beck's High 25 year manager of the Twin Falls Milling and Elevator Co. left last March 23 to accept an executive position with the Red Cross...

Remembrance advertisement: 1000 participants will take part in a remembrance ceremony in a columbarium located here, Mrs. Beck's High 25 year manager of the Twin Falls Milling and Elevator Co. left last March 23 to accept an executive position with the Red Cross...

Remembrance advertisement: 1000 participants will take part in a remembrance ceremony in a columbarium located here, Mrs. Beck's High 25 year manager of the Twin Falls Milling and Elevator Co. left last March 23 to accept an executive position with the Red Cross...

Remembrance advertisement: 1000 participants will take part in a remembrance ceremony in a columbarium located here, Mrs. Beck's High 25 year manager of the Twin Falls Milling and Elevator Co. left last March 23 to accept an executive position with the Red Cross...

Library advertisement: (Continued From Page One) Mrs. first started the project in favor of a coordination program...

Negroes At Northwestern Set Demands advertisement: EVANSTON, Ill. (AP) — Negro students at Northwestern University set out a list of demands for the school's finance office today...

Man Survives Spetacular Auto Wreck advertisement: HOLLISTER — Ronnie E. Bodenshteyn, 27, Twin Falls, was reported to be in good condition Friday at Magic Valley Memorial Hospital...

Youth, 18, Held In Burglary Case advertisement: An 18-year-old Twin Falls youth was in police custody Friday charged with first-degree burglary of a local grocery store...

Signed Into Law advertisement: WASHINGTON (AP) — President Johnson signed into law today a bill which imposes criminal penalties for making obscene, abusive or harassing telephone calls across state lines...

Remembrance advertisement: 1000 participants will take part in a remembrance ceremony in a columbarium located here, Mrs. Beck's High 25 year manager of the Twin Falls Milling and Elevator Co. left last March 23 to accept an executive position with the Red Cross...

Remembrance advertisement: 1000 participants will take part in a remembrance ceremony in a columbarium located here, Mrs. Beck's High 25 year manager of the Twin Falls Milling and Elevator Co. left last March 23 to accept an executive position with the Red Cross...

Remembrance advertisement: 1000 participants will take part in a remembrance ceremony in a columbarium located here, Mrs. Beck's High 25 year manager of the Twin Falls Milling and Elevator Co. left last March 23 to accept an executive position with the Red Cross...

Remembrance advertisement: 1000 participants will take part in a remembrance ceremony in a columbarium located here, Mrs. Beck's High 25 year manager of the Twin Falls Milling and Elevator Co. left last March 23 to accept an executive position with the Red Cross...

Remembrance advertisement: 1000 participants will take part in a remembrance ceremony in a columbarium located here, Mrs. Beck's High 25 year manager of the Twin Falls Milling and Elevator Co. left last March 23 to accept an executive position with the Red Cross...

Wage Settlement Patterns Climb To Higher Level

By JOSEPH R. COYNE
WASHINGTON (AP) — The Johnson administration is losing ground in an ever-faster pace in its bid to keep wage increases at a noninflationary level.

Instead of backing off from its administration's position, the administration had voiced hope that the pattern of wage settlements so far has climbed even higher.

The 6.5 per cent annual settlement announced Thursday by the Communications Workers of America and the Bell Telephone System is only the latest in a string of wage pacts far exceeding the administration's wishes.

There was no immediate comment from the Council of Economic Advisers on the telephone settlement, which still faces a

ratification vote—but administration officials undoubtedly feel it is inflationary even if they do not say so publicly.

In its annual report last February, the council called for union settlements "this year appreciably lower" than the 6.5 per cent average for 1967. It called for restraint by business to hold the price line.

The council fixed no exact wage-price guideline, such as its 3.2 per cent recommendation in 1966, and it said unions could be expected to hold their fire if a level representing the increased cost of living in 1967.

But here's what has happened so far this year:

Average wage settlements approached 6 per cent during the first quarter of this year, according to administration officials.

Settlements in the key construction industry are already approaching 8 per cent with demands in some areas for wage increases reportedly as high as 13 per cent.

The council has never abandoned its classic wage-price guideline—that firms, at least, maintain that price stability can be achieved only when wage increases are related to increased productivity.

An exact figure was absent from the administration's guidelines in order, the reasoning goes, it will be on firmer ground to request more strength on wages and prices by labor and business.

Once the administration gets its house in order, the reasoning goes, it will be on firmer ground to request more strength on wages and prices by labor and business.

Some administration leaders see President Johnson's call for higher taxes along with congressional demands for spending cuts as the key to renewed wage-price restraint.

There have been reports that the 1968 guideline was exceeded now to provide a higher base in government economies.

Government officials have repeated this direction and have refused such controls repugnant.

Israelis Kill 12 Arab Saboteurs

By MARCUS HILSON
TEL AVIV (AP) — Israeli troops patrolling the Negev Desert in the southern part of the country celebrated the 20th anniversary of their independence, killed 12 Arab saboteurs in a clash Thursday night, the army announced.

This raised the total number of Arab infiltrators reported killed this week to 37 and made it the most successful week in the army's anti-terror campaign since the Arab-Israeli war last June.

The army said about 125 guerrillas have been killed since last June. Seven Arab "Arab commando" activities accelerated.

Two Israelis were wounded on seriously in the fight Thursday night near the settlement of Hukuk, on the border with Jordan. An army spokesman said seven machine guns, hand grenades and explosives were captured from the bodies of the saboteurs.

Earlier, this week, the army said a patrol killed 13 infiltrators Sunday night near Jericho in the West Bank territory seized from Jordan in the war last June.

2 Students Will Speak At Castleford

CASTLEFORD — Charles Barinaga and Jeanette Reese will be the student speakers at the commencement exercises at the Castleford High School, May 20.

Charles Barinaga, son of Mr. and Mrs. Jose Barinaga, has been active in track and field for four years, varsity basketball two years and wrestling one year. He was a member of the IFA for one year and received the annual state honor award in a state high school gymnasium essay contest and third individual award in the district ontology contest.

He was alternate to Boys State in his junior year, senior class president, and member of the annual staff, editor of the paper staff, drill team, pep club, C Club, and FFA and served as a VICA reporter and degree chairman.

She is vice president of the senior class and was chosen Girl of the Month. She has studied Latin, French and Spanish and received the Sun Valley Music Camp Scholarship in 1967.

Castleford High School seniors are: Charles Barinaga, Anolla Baughman, Dennis Conrad, Ricky Easterday, Dick Fren, Connie Fenstermaker, Connie Glander, Charlotte Griggs, Glenda Griggs, Jim Hewporth, Cindy Herzinger, Judy Hill, Richard Jacobs, Ed King, Rose Matlanovich, Vait Marlon, Pete McArthur, Mary Rose McClain, John Parkinson, Eileen Putack, Louie Owens, Duane Reese, Jeanette Reese, Teresa Ruffing, Tim Sentien, Dennis Schorzman, Dennis Shaffer, Dennis Welch, Dennis Shaffer, Cathy Wiggins and Tony Wiggins.

Ex-Elmore Man Killed In Action

King Hill — Word has been received here of the death of Phillip Koningfeld in active duty in Vietnam. He was the son of Mr. and Mrs. Phillip Koningfeld, Tucson, Ariz., former King Hill residents.

Young Koningfeld attended King Hill Elementary schools from first through seventh grade. He was the nephew of Mr. and Mrs. Leo Stephens, Jerome, also former residents of King Hill.

BLUE COAL
Blaze Quality Always—at
WARBERG'S
733-7371

CHEVY OLDS BUICK PONTIAC

Why jump around from dealer to dealer?
We've Got 'em All

Largest Selection of Automobiles In Idaho — Under One Roof!

Sedans • Coupes • Wagons • Pickups • Small or Large Trucks • All Models • All Colors.

LEO RICE'S CHEVYLAND
One-Stop Shopping Center
Gooding, Idaho 934-4438

"THE PLACE THAT NEVER REFUSES A DEAL"

Slides Shown On Vietnam Action

JEROME — Dr. Lauren Nehrer showed 60 slides and told of his second tour of duty in Vietnam to the Kiwanis members and their wives Monday night at Woods Cafe.

He was at Jai An, 20 miles south of Da Nang on the coast. He described the rehabilitation work the United States is doing there. A question period followed the talk.

Arnold Westgaard and Harold Greenwell, were formally inducted into the club by Henry Pharris. Guests were Mr. and Mrs. Mac Ambrose, Judge and Mrs. Russell Shaud, Mr. and Mrs. Dale Burdette, Mr. and Mrs. Adrian Van Hook, Dr. and Mrs. Nehrer and Mrs. Linda Nuebel. Mrs. Nuebel was a guest of honor. Mr. and Mrs. Harold Otto.

your **LD** store

• TWIN FALLS

- STARTS 9:30 A.M. SATURDAY — HURRY!
- QUANTITIES VERY LIMITED • NO PHONE ORDERS
- ALL SALES FINAL • LAST DAY OF ANNIVERSARY SALE

<p>• WOMEN'S & GIRLS' •</p> <p>WOMEN'S SLACKS</p> <p>Reg. \$7 Anniversary SALE Priced \$4.88 Now</p> <p>2⁹⁹</p>	<p>• MEN'S & BOYS' •</p> <p>MEN'S SHORT SLEEVE SPORT SHIRTS</p> <p>Special 3 for \$5</p> <p>Reg. 3.59 or 3 for \$10 Anniversary price 2.59 or 3 for \$7</p>	<p>• MAIN FLOOR • BASMENT •</p> <p>COSMETIC KITS</p> <p>Reg. \$3 Sale 1.99 NOW</p> <p>99¢</p>
--	--	---

<p>WOMEN'S BLOUSES</p> <p>While they last, Reg. \$2, Sale \$1.99 NOW ? ?</p> <p>WAP COULOTES</p> <p>Reg. \$6.47, Sale \$4.44 NOW ? ?</p> <p>WOMEN'S SHORTS</p> <p>Bermudas and Jammies, Reg. \$6, Sale \$3.44 NOW ? ?</p> <p>WOMEN'S DRESSES</p> <p>One group, Reg. \$13, Sale \$8 NOW ? ?</p> <p>WOMEN'S KNIT SUITS</p> <p>One group, reg. to \$40, Sale \$22 NOW ? ?</p> <p>GIRLS' SWIMSUITS</p> <p>Size 14-16, Reg. \$5 and \$6, Sale \$3.44, \$3.88 NOW ? ?</p> <p>WOMEN'S DRESSES</p> <p>One group, reg. 47, Sale \$4 NOW ? ?</p> <p>BABY DOLL PAJAMAS</p> <p>Girls' size 4-14, reg. \$4, Sale \$1.78 NOW ? ?</p> <p>GIRLS' PANTIES</p> <p>Nylon, Jockey, reg. 49¢, Sale 49¢ NOW ? ?</p> <p>GIRLS' PANTY HOSE</p> <p>Fishnet, reg. \$3, Sale \$1.99 NOW ? ?</p> <p>WOMEN'S SPORTSWEAR</p> <p>Cardigans, reg. \$6-\$16, Sale \$5-\$9 NOW ? ?</p> <p>GIRLS' CAPRI SETS</p> <p>Cotton slacks, reg. \$4 & \$6, Sale \$2.88 & \$3.88 NOW ? ?</p> <p>GAUZE DIAPERS</p> <p>Slightly irregular, \$3 if perfect, Sale \$1.99 NOW ? ?</p> <p>GIRLS' COTTON SHIRTS</p> <p>Size 7-14, Assorted Pattern, Reg. \$4, Sale \$2.88 NOW ? ?</p> <p>GIRLS' PEASANT BLOUSES</p> <p>White, size 7-14, Reg. \$3, Sale \$1.88 NOW ? ?</p>	<p>MEN'S PERMA PRESS CASUAL PANTS</p> <p>Reg. \$7, Anniversary Price \$4.44 NOW ? ?</p> <p>MEN'S PERMA PRESS DRESS SLACKS</p> <p>Reg. \$12.95, Anniversary Price \$2.98 NOW ? ?</p> <p>MEN'S MATCHED WORK SETS — Pants, reg. 4.99</p> <p>Size \$2.97, Shirt, Reg. \$2.98, Sale \$2.97 NOW ? ?</p> <p>MEN'S STRETCH HOSE</p> <p>Reg. \$1.50, Sale 3 pr. \$2 NOW ? ?</p> <p>MEN'S SPORT COATS</p> <p>Reg. \$30, Sale \$19.88 NOW ? ?</p> <p>MEN'S SWIM SUITS</p> <p>Reg. \$5, Sale \$2.99 NOW ? ?</p> <p>MEN'S CASUAL JACKETS</p> <p>Reg. to \$16, Sale \$2.99 NOW ? ?</p> <p>MEN'S BROOKLYN SUE SUITS</p> <p>Reg. to \$90.00, Sale \$1.99 NOW ? ?</p> <p>MEN'S LONG SLEEVE SPORT SHIRTS</p> <p>Reg. \$5, Sale 3 for \$10 NOW ? ?</p> <p>LONG SLEEVE WHITE DRESS SHIRTS</p> <p>Broken sizes, reg. \$6, Sale \$2.99 NOW ? ?</p> <p>FAMOUS MAKE-UP/MAKE-UP</p> <p>3 Sulfur, Reg. 44.95, Sale \$24.88 NOW ? ?</p> <p>2 Sulfur, Reg. 42.95, Sale 24.88 NOW ? ?</p> <p>2 1/2 Pullman, Reg. 42.95, Sale 26.88 NOW ? ?</p> <p>3 1/2 Compuliner, Reg. 28.95, Sale 20.88 NOW ? ?</p> <p>3 1/2 Compuliner, Reg. 27.95, Sale 20.88 NOW ? ?</p> <p>Beauty Case, Reg. 26.95, Sale 17.88 NOW ? ?</p> <p>BOYS' NO IRON SPORT SHIRTS</p> <p>Reg. \$2.98, Sale \$1.99 SURPRISE SPECIAL 99¢</p> <p>HOPSACK PERMA PRESS JEANS, sizes 30-32, reg. \$6</p> <p>Sale \$3.44 - 26-27 waist, reg. \$8, Sale \$4.44 NOW ? ?</p> <p>BOYS' T SHIRTS AND BRIEFS</p> <p>Reg. 3 for \$7.25, Sale 3 for \$1.99 NOW ? ?</p> <p>BOYS' SPORT COATS — Sizes 6-17, reg. \$15, Sale \$10.48, over 1, 14-20, reg. \$20, Sale \$12.88 NOW ? ?</p> <p>BOYS' SHIRTS — Sizes 6-17, reg. \$3, Sale 3.88 NOW ? ?</p> <p>Now 7, Sizes 26-30, reg. \$4, Sale \$4.88 NOW ? ?</p> <p>BOYS' PLAY SETS</p> <p>Size 3-7, reg. \$3, Sale \$1.77 NOW ? ?</p> <p>BOYS' MOCK TURTLE KNIT SHIRTS</p> <p>Sizes 3-7, reg. \$2, Sale \$1.44 NOW ? ?</p>	<p>6" ROUND RUGS</p> <p>Reg. \$12.00, Sale \$9.99 NOW ? ?</p> <p>SCATTER RUGS</p> <p>Reg. \$4.98, Sale \$2.99 NOW ? ?</p> <p>TERRY TABLE CLOTHS</p> <p>Reg. \$3.98-\$6.98, Sale \$1.99-\$4.99 NOW ? ?</p> <p>MORGAN JONES BEDSPREADS</p> <p>Reg. to \$23.29, Sale \$2.88 NOW ? ?</p> <p>TOWELS</p> <p>Reg. \$2.47, Sale .99c NOW ? ?</p> <p>PILOW PROTECTORS</p> <p>Reg. \$1.59, Sale .99c NOW ? ?</p> <p>FOAM PILLOWS</p> <p>Reg. \$4.98, Sale \$2.99 NOW ? ?</p> <p>PILOW TUBING</p> <p>Reg. \$1.49 pr. Sale \$1.09 pr. NOW ? ?</p> <p>BEACH TOWELS</p> <p>Reg. \$3.98, Sale \$2.99 NOW ? ?</p> <p>ELECTRIC BLANKETS — Twin, Reg. \$12.99 Sale \$10.99 NOW ? ?</p> <p>DOUGIE, Reg. \$14.98 Sale \$11.99 NOW ? ?</p> <p>CANTREE HOSIERY</p> <p>Reg. \$1, Sale 3 pr. \$2 NOW ? ?</p> <p>SUPPORT HOSE</p> <p>If perfect, \$3.95, Sale 3 pr. \$3 NOW ? ?</p> <p>LADIES' ANKLETS</p> <p>Reg. 99¢, Sale 3 pr. \$1.29 NOW ? ?</p> <p>CHAIN BELTS</p> <p>Reg. \$2.56, Sale \$1.44 NOW ? ?</p> <p>PAJAMAS, Famous brand</p> <p>Reg. \$4, Sale \$4.88 NOW ? ?</p> <p>JYVEN HOSE</p> <p>If perfect, 69¢ pr. Sale 3 pr. 77¢ NOW 3 pr. 59¢</p> <p>PARRIC ARNOLD TRIACRATIN AND COTTON DENIM</p> <p>Reg. \$1.98 yd. Sale 99¢ yd. NOW 69¢</p> <p>PARRIC SUMMER CANVAS PRINTS</p> <p>45" wide, Reg. \$1.39 yd., Sale 88¢ yd. NOW ? ?</p>
--	---	---

• SHOE DEPARTMENTS •

<p>Women's Famous Brand DRESS PUMPS, FLATS, CASUALS</p> <p>Values to \$18 Anniversary Price \$6 NOW</p>	<p>Women's SQUAW BOOTS</p> <p>\$6 Value Anniversary Price \$4.90 NOW</p>	<p>Women's DRESS FLATS</p> <p>Values to \$8 Anniversary Price \$4.88 NOW</p>
--	---	---

"SHOP EARLY FOR BEST SELECTIONS"

HOT ASPHALT

COMMERCIAL & RESIDENTIAL PAVING

Before you buy or build... send for this valuable kindal Cedar Homes Planning Kit

it could save you hundreds of dollars.

Enclosed is \$1.00 for my complete kindal Cedar Homes Planning Kit.

ASSOC. DIST. GUY PETERSON

HAGERMAN, IDAHO 837-4480

Magic Valley ASPHALT PAVING, INC. Eastland Drive 733-1829

GRADING EXCAVATING

STATE FARM IS NO. 1 IN THE SALE OF HOMEOWNERS' INSURANCE.

And no wonder! It's the same good deal on our car insurance.

Call me for details

VERL MECHAN
State Farm Insurance Agent
1632 ADDISON AVE E.
733-2623

STATE FARM FIRE & CASUALTY COMPANY
Home Offices: Bloomington, Ill. 5901

May 3-4, 1968

Times News

Official City and County Newspaper Member of Audit Bureau of Circulations and A.P.

Published daily except Sunday... JACK MULHONEY Publisher... WILEY DODDS Advertising Manager...

Back In Harness

The appointment of George W. Ball as U.S. ambassador to the United Nations... Mr. Ball spent almost six years as undersecretary of state...

WASHINGTON—Overriding every other aspect of Hubert Humphrey's Presidential candidacy is the virtual assurance that Sen. George McCarthy will join the battleground in his Minnesota neighborhood...

There is, of course, much more to it than that Humphrey people have told McCarthy he can have the job that seems tailor-made for McCarthy...

"You Just Fill In The Bottom Line!"



BRUCE BLOSSAT

back waters of policy-making. As President, Hubert Humphrey would be less abrasive than Lyndon Johnson...

MR. SPECTATOR

Why Not Work And Dream?

It's pretty much an accepted truth among social scientists that the monotonous routine of a modern factory production line is dehumanizing...

RUSTY ROY

It is only fitting that the cabin-maker and used by members of the local Presbyterian church...

GIVEAWAY DEPT.

We need a good home for a draft victim of a nature called (male) left with us in find him a home. He is obedient, intelligent and loves the freedom of a farm or ranch...

Korea: Guide For Peace Talks

WASHINGTON (AP)—After our experience in negotiating the Korean and Chinese Communists at Kaesong in 1951, it has to be a puzzle why President Johnson ever said he would talk with the Vietnamses Reds anywhere, any time...

WAYNE BRANDSTADT, M.D. Encephalitis

Q. What is the cause of encephalitis? How does it start? Is it contagious? How long does it last? Are there any after-effects?

WALTER MEARS The Indoor Sport

WASHINGTON (AP)—An Amateur Athletic Union member, Rockefeller is becoming a leading indoor sporter. Rockefeller, said of this indoor sport, Rockefeller is a true athlete who always remains the fans it is his ball.

WARD CANNEL We Study The Female Species

It has long been known that the female species is the more complex of the two. At least 1,250 new studies of the Typical American Woman in various stages of preparation for life's typical male street scenes were stopped...

Directory Of Churches, Services

Jerome Gets New Pastor

JEROME—Presbyterians welcome their new minister of Sunday morning. He is Rev. William L. Barrett of Phoenix, Ariz.
A native of Shawnee, Okla. he has a wife and three boys, ages 6 to 12. He was graduated from Poplar City, Okla., high school in 1945, the College of Emporia, Emporia, Kan., in 1952, and received his degree from San Francisco Theological Seminary in 1955.
He was assistant pastor of Presbyterian Church in San Francisco, and pastor of the First Presbyterian Church at Arcata, Calif. He came to Jerome from Phoenix, where he was pastor since 1962.
His hobbies are painting and choir activities. His wife has been teaching physical education in public schools.
Services can be held by microphone in the overflow room, junior Sunday school room and foyer. The chapel has earphones for the use of those with hearing problems.
The rooms are all equipped with the exception of the cultural hall and hallway which are tiled. Gold draperies match the gold upholstered chairs in the Sunday school room and meeting rooms. The chapel has new oak benches. All the walls have been painted cream-color over brick. Orange velvet curtains drape the stage and a number of set settings can be achieved with the black blackout curtains which move on rollers.
To provide music, the chapel will contain an electric organ, grand piano and console piano, with three other pianos used in other parts of the building.
The kitchen, conveniently placed near the side entrance contains two electric stoves with large ovens, refrigerator and oak cabinets.
The church is one of the very few in Magic Valley to be air conditioned. Heating is by means of oil-gas furnaces, with electric heat used for the sanctuary room, office and foyer.
Sidewalks have been laid and black-top put on parking areas. A number of trees and shrubs have been planted and the ground is ready for lawn seeding.
The former Filer LDS Ward was built in 1958. Since it was destroyed by fire, services for the 274 members were first held in the Tom Parks Pavilion at the fairgrounds and later in the vacant Central school.
The new building consists of a chapel with seating capacity for 220 people and an overflow room for Sunday and Wednesday services, from the Filer High school building. The new rooms are open to a total of 450 people can be seated.
Other rooms include the bishop's office, clerk's office, library, 12 teaching rooms, seminar room, Relief Society room, rest rooms, kitchen and furnace room.
The cultural hall has a large stage and folding chairs and Max L. Call Idaho Falls, was banquet tables are stored underneath the stage. Two basket ball boards can be lowered for use as a gymnasium when the stage is being used for plays.
Five microphones have been installed in the chapel and a number of them placed in the cultural hall and on the stage.

CHURCH OF THE BROTHERS 401 Filer Ave. W. Rev. Gerald D. ... Sunday services: 10 a.m. ...
WESLEYAN HOLINESS 201 Madison St. Rev. John ... Sunday services: 10 a.m. ...
LDS FIFTH WARD 110 Fourth Ave. S. Bishop Howard ... Sunday services: 10 a.m. ...
SEVENTH-DAY ADVENTIST Grandview Drive, John W. ... Sunday services: 10 a.m. ...
FIRST CHURCH OF THE NAZARENES 401 South Ave. S. Rev. ... Sunday services: 10 a.m. ...
FIRST BAPTIST 443 Monroe St. ... Sunday services: 10 a.m. ...
HILL MISSIONARY 224 Hazard ... Sunday services: 10 a.m. ...
OUR SAVIOR LUTHERAN 322 Second St. ... Sunday services: 10 a.m. ...
FIRST SOUTHERN BAPTIST 409 Washington St. ... Sunday services: 10 a.m. ...
VALLEY CHRISTIAN 1184 N. ... Sunday services: 10 a.m. ...
COMMUNITY PRESBYTERIAN 215 N. ... Sunday services: 10 a.m. ...
LDS SECOND WARD 314 Fourth Ave. N. Bishop G. ... Sunday services: 10 a.m. ...
BETHLE TEMPLE APOSTOLIC 1181 N. ... Sunday services: 10 a.m. ...
FIRST CHURCH OF GOD 236 ... Sunday services: 10 a.m. ...
FIRST UNITED BRETHRENS 457 Third Ave. S. Sunday services: 10 a.m. ...
LIVESTRONG BAPTIST 281 ... Sunday services: 10 a.m. ...
FIRST BAPTIST 674 ... Sunday services: 10 a.m. ...
PERSONAL CHURCH OF GOD 216 ... Sunday services: 10 a.m. ...
SAINTLY SOUTHERN BAPTIST 352 ... Sunday services: 10 a.m. ...
CHURCH OF CHRIST 300 ... Sunday services: 10 a.m. ...
IMMANUEL LUTHERAN 205 ... Sunday services: 10 a.m. ...
CHRISTIAN SCIENCE 104 ... Sunday services: 10 a.m. ...
SAVING THE SOUTHERN BAPTIST 204 ... Sunday services: 10 a.m. ...
MONDAY BIBLE STATION KTFI 1270 K



REV. RICHARD HORN will be conducting revival services at the First Southern Baptist Church May 5 through May 12. Services will begin at 7:30 p.m. each evening with Phil Cridler serving as song leader and Mrs. Howard Gibbs, pianist. Rev. L. O. Robertson is pastor of the church. Rev. Horn is a native of Texas and graduated from Wayland Baptist College, Plainview, Tex., in 1964. He pastored two churches prior to coming to Idaho and has been pastor of the First Baptist Church in Burley since 1965. He and his wife, Jean, have three boys. The public is invited to the services and every care will be provided.

Events Scheduled DIETRICI—Dietrich, Sup Wayne Peron announces that high school graduation will take place at 8 p.m. May 31 in the school gymnasium. Basketball exercises will be held at 8 p.m. May 12 with Frank Cravens, head of the student program at CSI, speaking. Graduation exercises will be held at 8 p.m. May 31 in the school gymnasium. Fire Rita Sorenson, Lucille Bradley, Tom Ballard, Glenn Nelson, Lloyd Towne, Evan Sorenson, Roy McClelland, Lane Grabbe and Will Anderson.



BISHOP JAMES JAGE is shown working at the desk in his office in the newly completed Filer LDS Ward. His office occupies about a third of the hallway from the library. Bishop Jage invites visitors to an open house of the new ward Sunday.

Open House Set For Filer LDS Chapel

FILER—Open house for the new building consists of a chapel with seating capacity for 220 people and an overflow room for Sunday and Wednesday services, from the Filer High school building. The new rooms are open to a total of 450 people can be seated. Other rooms include the bishop's office, clerk's office, library, 12 teaching rooms, seminar room, Relief Society room, rest rooms, kitchen and furnace room. The cultural hall has a large stage and folding chairs and Max L. Call Idaho Falls, was banquet tables are stored underneath the stage. Two basket ball boards can be lowered for use as a gymnasium when the stage is being used for plays. Five microphones have been installed in the chapel and a number of them placed in the cultural hall and on the stage.

Handsen Elevator advertisement with '5 POINTS FOR GREATER CORN PROFITS' graphic and list of benefits: 1 PLANT EARLY AND THICK. 2 APPLY MORE FERTILIZER. 3 CONTROL WEEDS. 4 CONTROL INSECTS. 5 PLANT ALL DEKALB!

Large advertisement for the 1968 Mercury Monterey! featuring a large image of the car and text: 'FOR A LIMITED TIME ONLY YOU CAN BUY the 1968 Mercury Monterey! BUILT BY THE MAKERS OF THE LINCOLN CONTINENTAL... WITH THE FINE CAR TOUCH! FOR ONLY \$2717... ONLY \$285 DOWN \$79.80 PER MONTH... THE MONTEREY HARDTOP COUPE *... THEISEN MOTORS 701 MAIN AVE. EAST - PHONE 733-7700 - THE EASIEST PLACE IN THE WORLD TO BUY A CAR!'

News Of Record



SEVENTEEN MAGIC VALLEY high school girls left Twin Falls Thursday to attend a two-day youth conference on mental retardation at the University of Idaho. Seen here are Ann Butler, Buhl, left, and Mrs. Gladys Coxen, special education teacher in Twin Falls. The girls will work with the mentally retarded upon their return from Moscow. All are volunteers.

JEROME COUNTY Clerk's Office
A marriage license was issued to Steven Klunder, Jerome, and Judith-Harley, Twin Falls. Dockets were filed by Donald Fleming to Jerome Highway District, Ethel Scott to Jerome Highway District, Ethel Scott to Jerome Highway District, A Clayton to James Clayton, August Lepp to Polly Shavin.

Justice Court
John Hepworth, Jerome, \$10, and Howard, Hazelton, \$10, driving a motorcycle without head protector.

Rayd Harrel, Eden, \$50, and sentenced to 90 days in the county jail for battery against a 7-year-old boy. His jail sentence was suspended and he was put on probation for six months, providing he does not frequent bars and does not contact the boy or his family.

Police Court
Minor damage resulted when cars driven by Albert Lutz, Jerome and Reed Condie, Gooding, collided at the intersection of West Main street and Cedar Street, Jerome.

Michael Slater, \$20, driving on restricted license after dark. Leo Traujillo, \$10, restricted license, no glasses, and James Powell, \$10, failure to register vehicle.

MAYFLOWER Offers
EXPERT MOVING
SAFELY STORAGE
SKILLED PACKING
MAGIC VALLEY MOVING & STORAGE, INC.
Twin Falls - Jerome-Idaho
Agent for
AREO-MAYFLOWER TRANSIT CO.
Jerome Twin Falls
ext. 345 733-1491
No charge on enterprise calls
LOCAL & LONG DISTANCE MOVING

Calligore
AQUA 1 WATER PURIFIER
BOTTLED WATER WITHOUT THE BOTTLES!
RENT-LEASE-SALES
733-2421

House Ways And Means Committee To Take New Look At Proposed Tax Boost

By WILLIAM MORAN, Associated Press Writer
WASHINGTON (AP) — The House Ways and Means Committee, where President Johnson's proposed income tax boost has languished in limbo for eight months, will take a new look at the measure and a companion \$18 billion appropriations cut plan.
Chairman Wilbur D. Mills, D-Ark., said he wants to sound out the committee Monday before any more sessions of a Senate House conference committee seeking a compromise package.
"There is no point in going much farther in the conference until I have an idea what the committee will back," Mills told newsmen Thursday.
The Senate has passed a bill including a 10 per cent income tax increase as proposed by President Johnson. That same bill calls for a \$6 billion spending cut in Johnson's budget for fiscal 1969, which begins July 1.
The conference committee has been discussing this bill for several weeks without much progress, since of late the House Appropriations Committee made its own recommendation on spending this week, an \$18 billion long-range appropriations cut, including a \$1 billion slash in the coming fiscal year.
There are predictions the final figure for fiscal 1969 spending reductions will amount to \$5 billion.
But Rep. John W. Byrne of Pennsylvania, a leading Republican on the Ways and Means Committee, said the Republicans won't support any tax economy package until calls for a \$6 billion cut in the coming year.
"It is believed GOP support will be needed in both Senate and House to pass any tax spending bill."
Further developments — Administration officials said they will seek to revive in Congress their proposal to tax the overseas spending of American tourists and businessmen. The Ways and Means Committee deferred any decision on this plan

ONE HEARING AID WILL NOT FIT EVERYONE

NO! of course not, and this is why the Audiotone Inquiries "Custom Fit" such hearing aid is individualized to fit the contours of your bone or ear. Your hearing will be thoroughly tested and evaluated to determine your individual hearing requirements. The results will be used in the Audiotone laboratory where your personal components will be built into a "Custom Fit" hearing aid. Hearing is individualized for a low hearing examination and learn how little it costs to have "Custom Fit" hearing.

Audiotone Hearing Aid Service
HOWARD C. TIPPIN
Owner & Consultant
733-5709

For Further Information Phone 733-5709 or Write Room-1014 Under No Obligation For Evaluation.

IMPALA
V8 SPORT COUPE!
Automatic Transmission, Carpet, High-way wipers, and loads of other equipment... \$2666.00

CHEVELLE
EL CAMINO
Need for a family car, and a pickup. This one does both jobs... \$2333.00

CAMARO
SPORT COUPE
Hardtop coupe with bucket seats... \$2333.00
win your heart... \$2333.00

BEL AIR
4-DOOR SEDAN
The large economy car. Chevrolet, V8 engine, Automatic Transmission, Power, \$2666.00
Steering, Full Carpet... \$2666.00

CHEVELLE
V8 COUPE
Full factory equipment. The low-mileage car that's \$2333.00
winning America!... \$2333.00

Chevy II 2-door Coupe
The economy car with the high resale value. Low cost operation with comfort and styling.

\$1999⁰⁰

*No money down! Terms you can live with.

GLEN JENKINS
YOUR CHEVROLET DEALER

"Little Profit"
That is probably one of the greatest money-saving new car sale events that you have ever seen in Magic Valley! We're cooperating with General Motors-Chevrolet Division in the greatest sales push of all Time! The profit Glen Jenkins nets on each sale will be small... very small... you can see it reflected on the special sale-price tags.

MAY SAVE DAYS

Why don't we make more money per car? Because we can truthfully make more total dollars by selling a lot of cars at a little profit than we can by selling a few cars at a big profit. We'd rather sell 1000 new cars at \$35 to \$50 profit per car than sell 100 new Chevrolats at \$350 profit per car. Our little profit policy is good business for us, and for you.

SUNDAY DINNER
IN OUR NEW DINING ROOM
Served 12 Noon to 8 p.m.

ROAST PORK COMPLETE DINNER
Including Soup, Salad, Dessert
\$1 PLATE

SUNDAY SWEEPSTAKES DRAWING
24-\$25
CASH DRAWINGS
No Purchase Necessary

WEDNESDAY & FRIDAY BANK NIGHTS
3-\$200
BANKS

30 LUCKY LICENSE WINNERS
Register Free All Week. Winners Posted Wed. and Thurs.
\$25-\$10-\$5

DINE and DANCE
to the Music of **MUSTIE BRAUN**
Singing and Playing your requests at the **PIANO and ORGAN!**

WIN UP TO \$100

SATURDAYS ON THE WHEEL OF FORTUNE
Drawings Every Few Minutes
Bring Your Sweepstakes Tickets

CLUB CAFE MOTEL
LoVell and Roberta Barton Harvey and Hazel Wright

CLUB 93

Go

CLUB 93

Highway 93, JACKPOT, NEVADA

GLEN JENKINS, Chevrolet
313 MAIN AVE. WEST - TWIN FALLS

Today's Market And Financial Report

Stocks
Dow-Jones, 2 p.m.
STOCKS
DOW-JONES, 2 p.m.
918.98 up 6.93

MARKETS AT A GLANCE
NEW YORK (AP)—Markets at a glance: Stocks—Irregular in heavy trading; grain—Higher; oil—Higher; wheat—Higher; influenced by...
Chicago—Higher; good demand.
Wheat—Higher; good demand.

3 P.M. QUOTATIONS
NEW YORK STOCK EXCHANGE
NEW YORK STOCK EXCHANGE
Selected stock prices:
ABC Co 1.60 11 1/2
ACI Ind 2.20 21 1/2

Livestock
CATTLE (AP)—Cattle prices advanced more than 10 cents a bushel but late profit taking trimmed this near the close.

GRAIN
CHICAGO (AP)—All commodity prices advanced on the 2 1/2-cent rise in wheat. It was the best forward movement of prices in two months.

CHICAGO (AP) (USDA)—Cattle prices advanced more than 10 cents a bushel but late profit taking trimmed this near the close.

POTATOES, ONIONS
IDAHO FALLS, IDAHO (AP)—All sales local, shipping point and point below. Potatoes in Upper Valley, Twin Falls and Burley districts offered...

AMERICAN STOCK EXCHANGE
Selected stock prices:
Ariston 100 10 1/2
Ariston 100 10 1/2
Ariston 100 10 1/2

Mutual Funds
AFFILIATED FUND 4.8 21.6 22.76
COMMONWEALTH 21.26 22.76
DODD FUND 8.65 18.88

Over the Counter
Quotations from RARD at approximately 1:30 p.m.
Wheat 1.25 1.34 1.35 1.34 1.34

Honor Roll of Several Is Released
Several single Valley students attending Utah State University, Logan, have been named to the honor roll for the winter quarter.

Butter and Eggs
CHICAGO (AP)—Butter held steady at 37 cents a pound, 80 percent butter grade. Eggs tops weak, balance bid steadily, wholesale buying prices...

Twin Falls Markets
GRAIN
POTATOES
EGGS
LIVESTOCK

Valley Traffic Courts

Flines paid in Twin Falls Police Court before Judge Harry Turner include Charles L. Kimball, Route 2, Hazelton, 320; Warrick, George, 1417; Hill, A. E., 510; Robert Scheele, 1866 Sigrd St., 520; and for failure to yield right of way, Garner D. Stephens, 1000 N. 1st St., 500; and Susan K. Jackson, 342 Alturas Drive, 100.

OGDEN (AP)—Wheat delivered, truck bids, No. 1 red, 1.25; No. 2, 1.15; No. 3, 1.05; No. 4, 1.00; No. 5, 0.95; No. 6, 0.90; No. 7, 0.85; No. 8, 0.80; No. 9, 0.75; No. 10, 0.70; No. 11, 0.65; No. 12, 0.60.

CASH GRAIN
CHICAGO (AP)—Wheat No. 1 hard 1.43; No. 2 soft red 1.37; No. 3 soft red 1.32; No. 4 soft red 1.27; No. 5 soft red 1.22; No. 6 soft red 1.17; No. 7 soft red 1.12; No. 8 soft red 1.07; No. 9 soft red 1.02; No. 10 soft red 0.97; No. 11 soft red 0.92; No. 12 soft red 0.87.

GRAIN FUTURES
High Low Close
Wheat 1.25 1.34 1.35 1.34 1.34
Corn 1.15 1.24 1.25 1.24 1.24

Mutual Funds
AFFILIATED FUND 4.8 21.6 22.76
COMMONWEALTH 21.26 22.76
DODD FUND 8.65 18.88

Over the Counter
Quotations from RARD at approximately 1:30 p.m.
Wheat 1.25 1.34 1.35 1.34 1.34

Honor Roll of Several Is Released
Several single Valley students attending Utah State University, Logan, have been named to the honor roll for the winter quarter.

Butter and Eggs
CHICAGO (AP)—Butter held steady at 37 cents a pound, 80 percent butter grade. Eggs tops weak, balance bid steadily, wholesale buying prices...

Twin Falls Markets
GRAIN
POTATOES
EGGS
LIVESTOCK

Successful Investing

By ROGER E. SPEAR
I have 100 shares of City...
Investing Friends advise...
City investing, for example, is a report on a blue chip income stock or sell warrants and convertible debentures.

Business Mirror
By JOHN CUNIFF
AP Business Analyst
NEW YORK (AP)—Ten years ago an industry used to be a...
loss because of alcoholism. Now it speaks of a \$2-billion-a-year loss from the same ailments.

Undersea Study Set By 4 Scientists
VALLEY (FORGE), Pa. (AP)—Four U.S. oceanists will spend 60 days on the ocean floor next year in the longest continuous undersea study in U.S. history.

Over the Counter
Quotations from RARD at approximately 1:30 p.m.
Wheat 1.25 1.34 1.35 1.34 1.34

Concert Set
The Buhl High School Music Department will present its spring concert with the theme "Music of the Future" at 8:15 p.m. Friday, May 10, reports David Cooper, director.

Interested in Knowing More About Investments in Stocks On:
NEW YORK
AMERICAN
OVER-THE-COUNTER MARKET

Interested in Knowing More About Investments in Stocks On:
NEW YORK
AMERICAN
OVER-THE-COUNTER MARKET

Interested in Knowing More About Investments in Stocks On:
NEW YORK
AMERICAN
OVER-THE-COUNTER MARKET

Interested in Knowing More About Investments in Stocks On:
NEW YORK
AMERICAN
OVER-THE-COUNTER MARKET

BRIDGE

By Jacoby

CLEVER PLAY
NETS OVERTRICK
Today's hand, an old favorite of bridge writers, looks like a little overtrick in rubber bridge. But when Helen White played it in the 1935 National Women's fair tournament, she made an important overtrick at her five club contract. That overtrick would only be 20 points in rubber bridge but

ed. nothing unless the defense could get in a surprise ruff. Helen started with two losers. She was taking one quickly and leaving the other for later—or was she?

Anyway East was in with the queen of spades and promptly returned the jack of diamonds. Helen took the ace, cashed dummy's ace and king of clubs and her own king of diamonds, discarded her four of diamonds on one of dummy's high spades and with the club of trumps and discarded her heart loser on dummy's last diamond.

We doubt if many readers have recognized the name Helen White and it won't mean anything more if we tell you that she is now Helen Smith. However you will undoubtedly remember her if we tell you that shortly after 1935 she became Helen Sobel, who is still recognized as the greatest woman bridge player of all time.

NORTH (D) 3
 ♠AK62
 ♥75
 ♦9863
 ♣A8

WEST ♠A87
 ♥AQ10
 ♦Q72
 ♣5

EAST ♠Q83
 ♥KJ8843
 ♦J105
 ♣5

SOUTH ♠105
 ♥2
 ♦AK6
 ♣QJ97533

East-West vulnerable
 West North East South
 1-6 Pass 2-4
 Pass 3-5 Pass 4-6
 Pass Pass Pass
 Opening lead—4♣

It gave her a top score in match point-play. She went into the merit or lack of merit of the bidding. In spite of vulnerability East might have ventured a heart contract and its difficulty if many North players opened with one diamond, but the diamond opening and the lack of an overtrick set the stage for Miss White's play.

She played the deuce of spades from dummy. This risk-

CARD SENSE

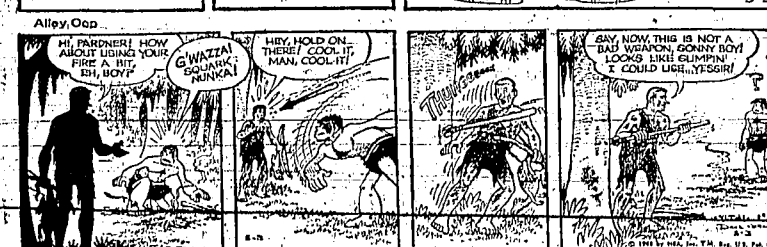
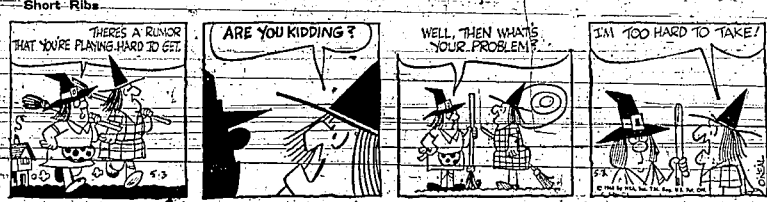
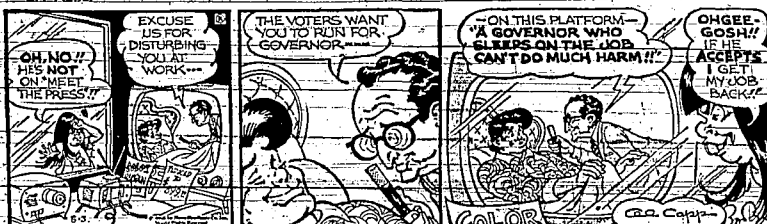
Q—The bidding has been: West North East South
 1-6 Dbl 2-4 Dbl 3-5

Q—You South, hold:
 ♠AK532 ♠543
 ♥AK532 ♠543
 ♦AK532 ♠543
 ♣AK532 ♠543

What do you do?
 A—Redouble. You are too strong to crowd the bidding by an immediate jump to four spades.

TODAY'S QUESTION

You redouble. West bids two clubs and you rebid two spades. East passes. What do you do now?
 Answer Next Issue



Young America's
Date-Line
 By
 ELE AND WALT DULANEY

Enforced Prayer Draws Him Attention

Dear Ele: The church we go to is very serious about religion. Because of this, my mother and I have made things very difficult for me. I could give you a lot of examples, but this is what I want to tell you. I've been trying to keep myself from every minute of my life. When we eat out at the restaurant, she leads us right out of the door. Even at school she wants me to do this, although I'm allowed the great privilege of doing it silently. Whenever I come home, she always asks, "Did you say your prayer?" And if I say yes, she double checks to see how long it was and everything. I don't want to tell you how many times I've pointed at me either—of VD articles and want to be Eighth Grade.

Dear Walt: Being a man I think you could answer this better than Ele. My boyfriend has started using some of the new male perfume or whatever you call it. I don't like the smell of it. How can I get the message across without embarrassing you and your friends? You're supposed to help—Ele.

Dear Rita: Next time you're at the beach or pool together, tell him after you climb out of the water. You know Glenn, I'm a college junior. I am fairly attractive and have a good personality. I date twice each week. I don't want to be a slut, but I don't want to be a virgin either. I hope you realize it as a girl, you're supposed to be a little bit of a slut. You'll find Ele and Walt's P.M. that if she has the guys "Dating Hints" an interesting coming to her, she has nothing and informative pamphlet for you to work about. If it's a biggie, write to Teenage Date-stick to it. The right one comes Line, in care of this newspaper, along only too soon. Don't set enclosing a dime and a selfie down to one if you still have addressed envelope.

Major Hoopie



Nuns and Monks

Answers to Previous Puzzles

ACROSS

1. 44 Postlo
2. 45 Given into the
3. 46 Arabian seaport
4. 47 Thoroughfare
5. 48 Albatross
6. 49 Merciful
7. 50 Assumed name
8. 51 Legal matter
9. 52 Exclamation
10. 53 Form of
11. 54 World leader
12. 55 Sail yard
13. 56 Black Sea
14. 57 Very formal
15. 58 Nuts
16. 59 Nuts
17. 60 Nuts
18. 61 Nuts
19. 62 Nuts
20. 63 Nuts
21. 64 Nuts
22. 65 Nuts
23. 66 Nuts
24. 67 Nuts
25. 68 Nuts
26. 69 Nuts
27. 70 Nuts
28. 71 Nuts
29. 72 Nuts
30. 73 Nuts
31. 74 Nuts
32. 75 Nuts
33. 76 Nuts
34. 77 Nuts
35. 78 Nuts
36. 79 Nuts
37. 80 Nuts
38. 81 Nuts
39. 82 Nuts
40. 83 Nuts
41. 84 Nuts
42. 85 Nuts
43. 86 Nuts
44. 87 Nuts
45. 88 Nuts
46. 89 Nuts
47. 90 Nuts
48. 91 Nuts
49. 92 Nuts
50. 93 Nuts
51. 94 Nuts
52. 95 Nuts
53. 96 Nuts
54. 97 Nuts
55. 98 Nuts
56. 99 Nuts
57. 100 Nuts



"I think I know why nothing is coming up—I was so busy digging, weeding and fertilizing, I forgot to put in the seeds!"

STAR GAZER
 By CLAY R. POLLAN
 Your Daily Activity Guide
 According to the Stars

To develop message for Saturday, read words corresponding to numbers of your Zodiac birth sign.

1 Mow	21 Sewing	41 Pie
2 The	22 Sewing	42 Pie
3 Mow	23 Sewing	43 Pie
4 Mow	24 Sewing	44 Pie
5 Mow	25 Sewing	45 Pie
6 Mow	26 Sewing	46 Pie
7 Mow	27 Sewing	47 Pie
8 Mow	28 Sewing	48 Pie
9 Mow	29 Sewing	49 Pie
10 Mow	30 Sewing	50 Pie
11 Mow	31 Sewing	51 Pie
12 Mow	32 Sewing	52 Pie
13 Mow	33 Sewing	53 Pie
14 Mow	34 Sewing	54 Pie
15 Mow	35 Sewing	55 Pie
16 Mow	36 Sewing	56 Pie
17 Mow	37 Sewing	57 Pie
18 Mow	38 Sewing	58 Pie
19 Mow	39 Sewing	59 Pie
20 Mow	40 Sewing	60 Pie

STAR GAZER
 By CLAY R. POLLAN
 Your Daily Activity Guide
 According to the Stars

To develop message for Sunday, read words corresponding to numbers of your Zodiac birth sign.

1 Fish	21 Bapinis	41 Cloning
2 A	22 Bapinis	42 Cloning
3 A	23 Bapinis	43 Cloning
4 A	24 Bapinis	44 Cloning
5 A	25 Bapinis	45 Cloning
6 A	26 Bapinis	46 Cloning
7 A	27 Bapinis	47 Cloning
8 A	28 Bapinis	48 Cloning
9 A	29 Bapinis	49 Cloning
10 A	30 Bapinis	50 Cloning
11 A	31 Bapinis	51 Cloning
12 A	32 Bapinis	52 Cloning
13 A	33 Bapinis	53 Cloning
14 A	34 Bapinis	54 Cloning
15 A	35 Bapinis	55 Cloning
16 A	36 Bapinis	56 Cloning
17 A	37 Bapinis	57 Cloning
18 A	38 Bapinis	58 Cloning
19 A	39 Bapinis	59 Cloning
20 A	40 Bapinis	60 Cloning

It's Easy Just Say "CHARGE IT"

13 Words 13 Times \$4.70

MAGIC VALLEY TOLL FREE NUMBERS... Buhl, Castleford... Wendell, Gooding...

Personal Special Notices... CASOLINE SALE AT SHEPBY'S ATTENDANT ON DUTY... Transportation - Car Pools 10...

Help Wanted - Male 19... STOP! ASK YOURSELF... "Where will I be and what will I be doing 5 years from today?"

Farm Work Wanted... MANURE HAULING... LEO'S CUSTOM FARMING... ROTO TILING...

Business Opportunities 30... FOOD-DISTRIBUTORSHIP... New and Exciting... Spare full time income...

Business Opportunities 30... FOOD-DISTRIBUTORSHIP... Rental purchase plan... Piano Lessons...

Music Lessons 40... ACCORDION... PIANO LESSONS... NEWLY REDECORATED... Homes For Sale...

Homes For Sale 50... HOMES... 3 BEDROOMS... 4 and 2 BEDROOM cottages... BARNES REALTY...

Twin Falls Times-News 15... May 3-4, 1968... NEW HOME... Out-of-Town Homes...

Baby Sitters - Child Care 16... CHILDREN'S SPECIAL... Employment Agencies 17... Help Wanted - Female 18...

OPENINGS FOR... Neat Waitresses Wanted... MAIDS WANTED... Agency Salesman Wanted...

BEAUTIFUL... GEM STATE REALTY... PLASTERING... ROTO TILING... PLUMBER...

FOR LEASE... BEAUTIFUL... GEM STATE REALTY... PLASTERING... ROTO TILING... PLUMBER...

NEW CONTEMPORARY... BARNES REALTY... MODERATELY PRICED... EQUIPMENT OPERATORS AND MECHANICS...

NEW CONTEMPORARY... BARNES REALTY... MODERATELY PRICED... EQUIPMENT OPERATORS AND MECHANICS...

NEW CONTEMPORARY... BARNES REALTY... MODERATELY PRICED... EQUIPMENT OPERATORS AND MECHANICS...

NEW CONTEMPORARY... BARNES REALTY... MODERATELY PRICED... EQUIPMENT OPERATORS AND MECHANICS...

WANTED Service Station Attendant... STUDENT SALESMAN... EXPIRIENCED Mechanic... BOB REESE MOTOR CO...

Manager TRAINING Opportunity... Ladies or Men... FULL or part time work... Agents-Salesman Wanted...

Business Opportunities 30... Air Conditioning... Lawn Service... Medical... Boarding & Training... Building Contractors...

Business Opportunities 30... Air Conditioning... Lawn Service... Medical... Boarding & Training... Building Contractors...

Business Opportunities 30... Air Conditioning... Lawn Service... Medical... Boarding & Training... Building Contractors...

Business Opportunities 30... Air Conditioning... Lawn Service... Medical... Boarding & Training... Building Contractors...

Business Opportunities 30... Air Conditioning... Lawn Service... Medical... Boarding & Training... Building Contractors...

Business Opportunities 30... Air Conditioning... Lawn Service... Medical... Boarding & Training... Building Contractors...

WANTED... J.B.'S BIG BOY... SERVICE Station and Bulk Fuel... SINGLET... KILN... PHOTOGRAPHY...

WANTED... J.B.'S BIG BOY... SERVICE Station and Bulk Fuel... SINGLET... KILN... PHOTOGRAPHY...

WANTED... J.B.'S BIG BOY... SERVICE Station and Bulk Fuel... SINGLET... KILN... PHOTOGRAPHY...

WANTED... J.B.'S BIG BOY... SERVICE Station and Bulk Fuel... SINGLET... KILN... PHOTOGRAPHY...

WANTED... J.B.'S BIG BOY... SERVICE Station and Bulk Fuel... SINGLET... KILN... PHOTOGRAPHY...

WANTED... J.B.'S BIG BOY... SERVICE Station and Bulk Fuel... SINGLET... KILN... PHOTOGRAPHY...

WANTED... J.B.'S BIG BOY... SERVICE Station and Bulk Fuel... SINGLET... KILN... PHOTOGRAPHY...

WANTED... J.B.'S BIG BOY... SERVICE Station and Bulk Fuel... SINGLET... KILN... PHOTOGRAPHY...

NEED AN EXPERT? USE THIS HANDY DIRECTORY AS A GUIDE TO FAST, RELIABLE SERVICE. PHONE TODAY FOR FREE ESTIMATES.

24 HOUR ANSWERING SERVICE. If the Telephone of Any Advertiser in This Directory is Not Answered, Dial 733-2386. The Advertiser Will Be Notified to Call You.

VALLEY TREE SERVICE. Trimming, pruning, stump pulling, etc. Telephone Answer Service. Lawn Service. Spraying. Medical. Boarding & Training. Building Contractors. Chain Link Fences. Concrete Forming. Plumbing. Electrical Contractors. Dry Wall. OWENS ELECTRIC. Farm Work Wanted. CUSTOM MANURE HAULING. CUSTOM FARMING. CUSTOM MANURE HAULING. CUSTOM FARMING. CUSTOM MANURE HAULING. CUSTOM FARMING.

VALLEY TREE SERVICE. Trimming, pruning, stump pulling, etc. Telephone Answer Service. Lawn Service. Spraying. Medical. Boarding & Training. Building Contractors. Chain Link Fences. Concrete Forming. Plumbing. Electrical Contractors. Dry Wall. OWENS ELECTRIC. Farm Work Wanted. CUSTOM MANURE HAULING. CUSTOM FARMING. CUSTOM MANURE HAULING. CUSTOM FARMING. CUSTOM MANURE HAULING. CUSTOM FARMING.

Times-News... PUBLISHED IN THIS BUSINESS SERVICE GUIDE OF THE... DELIVERED TO YOU 7-10:00... MAGIC VALLEY HOUSING DAILY... WE'LL BILL YOU LATER!

Forms for Sale 52
W.C. NIXON, a cow operator...
Gene Larsen Sales Co.

Real Estate For Trade 53
1967 FIREBALL...
1967 Mustang...
1967 Ford...

Lois and Acreage 54
"MLS"
EMERILY ACHAGI...

Taylor Agency
ARIZONA SUBDIVISION
LORRAINE...
1967 Oldsmobile...

HAGERMAN VALLEY
Here is a pretty little acreage...
1967 Oldsmobile...

Business Property 56
Commercial Property
1967 Oldsmobile...

Other Real Estate 60
RANCH WANTED
1967 Oldsmobile...

Real Estate Wanted 62
Wanted to buy...
1967 Oldsmobile...

Campers 63
RAM-AWAY CAMPERS
ASH PICKUP COVERS

Special
SPECIAL
1967 Oldsmobile...

Camper
RAM-AWAY CAMPERS
ASH PICKUP COVERS

Camper
RAM-AWAY CAMPERS
ASH PICKUP COVERS

Camper
RAM-AWAY CAMPERS
ASH PICKUP COVERS

Camper
RAM-AWAY CAMPERS
ASH PICKUP COVERS

Camper
RAM-AWAY CAMPERS
ASH PICKUP COVERS

Camper
RAM-AWAY CAMPERS
ASH PICKUP COVERS

Camper
RAM-AWAY CAMPERS
ASH PICKUP COVERS

Camper
RAM-AWAY CAMPERS
ASH PICKUP COVERS

Camper
RAM-AWAY CAMPERS
ASH PICKUP COVERS

FARM IMPLEMENTS 90
MINNEAPOLIS Model Jc. Tractor, very good...
JOHN DEERE 40-12 blade land plane...

2 YARD FARM H and long soilmoor...
ONE 40-12-12-12 long land harrow...
ONE 27 MELROE line harrow...

BRUCE NEIBAU
Route 1, Paul, Idaho
Aparments-Unfurnished 71
REAR ORKID 1 1/2 room apartment...

USED BUYS
ONE NEW JOHN DEERE
17-215-A-auger-windrower...

ONE 1968 single-disc JOHN
DEERE 300-Brant 4000...
USED JOHN DEERE 900
Land Plane, 9'6" cut...

TRACTORS
JOHN DEERE 530 diesel...
JOHN DEERE 400 gas...
INTERNATIONAL 450 gas...

TRACTORS
JOHN DEERE 530 diesel...
JOHN DEERE 400 gas...
INTERNATIONAL 450 gas...

TRACTORS
JOHN DEERE 530 diesel...
JOHN DEERE 400 gas...
INTERNATIONAL 450 gas...

TRACTORS
JOHN DEERE 530 diesel...
JOHN DEERE 400 gas...
INTERNATIONAL 450 gas...

TRACTORS
JOHN DEERE 530 diesel...
JOHN DEERE 400 gas...
INTERNATIONAL 450 gas...

TRACTORS
JOHN DEERE 530 diesel...
JOHN DEERE 400 gas...
INTERNATIONAL 450 gas...

TRACTORS
JOHN DEERE 530 diesel...
JOHN DEERE 400 gas...
INTERNATIONAL 450 gas...

TRACTORS
JOHN DEERE 530 diesel...
JOHN DEERE 400 gas...
INTERNATIONAL 450 gas...

TRACTORS
JOHN DEERE 530 diesel...
JOHN DEERE 400 gas...
INTERNATIONAL 450 gas...

TRACTORS
JOHN DEERE 530 diesel...
JOHN DEERE 400 gas...
INTERNATIONAL 450 gas...

TRACTORS
JOHN DEERE 530 diesel...
JOHN DEERE 400 gas...
INTERNATIONAL 450 gas...

TRACTORS
JOHN DEERE 530 diesel...
JOHN DEERE 400 gas...
INTERNATIONAL 450 gas...

TRACTORS
JOHN DEERE 530 diesel...
JOHN DEERE 400 gas...
INTERNATIONAL 450 gas...

TRACTORS
JOHN DEERE 530 diesel...
JOHN DEERE 400 gas...
INTERNATIONAL 450 gas...

SPECIAL Cow Sale
100 HEAD of cow lighters with calves by their side...
30 HEAD cows with calves by their side...

THESE WITH THE REGULAR RUN OF GOOD CATTLE
STOCK GROWERS Commission Company
Sale Starts Saturday, 11:30

ATTENTION Cattle Feeders
Green Giant Company
Bull, Idaho, is now taking orders for green chopped...

HORSE SHOEING
Cliff Miller
Monday thru Saturday
10:00 a.m. to 5:00 p.m.

REGISTERED HEREFORDS
Service Area
BULLS
North Main Lockers

WE Slaughter
On Farm Slaughtering
LAMB
Pork

SAWTOOTH KENNELS
Excellent bloodline studs...
North Main Lockers

NEW Litters of AKC
Collies, Norwegian Elk Hounds...
North Main Lockers

NEW Litters of AKC
Collies, Norwegian Elk Hounds...
North Main Lockers

NEW Litters of AKC
Collies, Norwegian Elk Hounds...
North Main Lockers

NEW Litters of AKC
Collies, Norwegian Elk Hounds...
North Main Lockers

NEW Litters of AKC
Collies, Norwegian Elk Hounds...
North Main Lockers

NEW Litters of AKC
Collies, Norwegian Elk Hounds...
North Main Lockers

NEW Litters of AKC
Collies, Norwegian Elk Hounds...
North Main Lockers

NEW Litters of AKC
Collies, Norwegian Elk Hounds...
North Main Lockers

NEW Litters of AKC
Collies, Norwegian Elk Hounds...
North Main Lockers

NEW Litters of AKC
Collies, Norwegian Elk Hounds...
North Main Lockers

NEW Litters of AKC
Collies, Norwegian Elk Hounds...
North Main Lockers

NEW Litters of AKC
Collies, Norwegian Elk Hounds...
North Main Lockers

102 Furniture & HH Goods 122
SPOT CASH
For Furniture, Appliances...
BANKER FURNITURE

Musical Instruments 123
USED
Gibson Amplifier...
Music Box Service

Radio and TV Sets 125
TV AND RADIO, Dependable...
LARGEST selection of color TVs...

Garage Sale 130
GARAGE sale at 673 Broadway...
SUNNY High Bands, High Point...

Good Things to Eat 133
Wholesaler's new line of...
Shrubbery-Plants-Bulbs 136

Shrubbery-Plants-Bulbs 136
Everbearing strawberry plants...
Cut Flowers 138

Cut Flowers 138
25 YEARS experience and low...
Antiques 139

Antiques 139
Antiques of all times...
Miscellaneous For Sale 140

Miscellaneous For Sale 140
JERRY'S GUN SHOP
21 1/2 miles west of hospital...

JERRY'S GUN SHOP
21 1/2 miles west of hospital...
Aircraft for Sale 165

Aircraft for Sale 165
AIRCRAFT SPECIALS
Shop - All sizes, 25 foot long...

AIRCRAFT SPECIALS
Shop - All sizes, 25 foot long...
Bids For Sale 169

Bids For Sale 169
SPRING HAS COME
See The New 1968 BOATS

SPRING HAS COME
See The New 1968 BOATS...
MERCURY MOTORS

MERCURY MOTORS
MERCURY MOTORS
MERCURY MOTORS

MERCURY MOTORS
MERCURY MOTORS
MERCURY MOTORS

MERCURY MOTORS
MERCURY MOTORS
MERCURY MOTORS

MERCURY MOTORS
MERCURY MOTORS
MERCURY MOTORS

MERCURY MOTORS
MERCURY MOTORS
MERCURY MOTORS

HI VALUE USED TRUCKS CARS AND PICKUPS

'63 Chev	\$945	'61 T-Bird	\$895
'58 Volk	\$945	'65 Dodge	\$1295
'65 Intern	\$1995	'57 Dodge	\$895
'59 Volk	\$935	'62 Stude	\$495

TRUCKS

Kenworth	\$6995	'57 Chev	\$1995
'61 IH BCF-170	\$3200	'59 IH DOP-405	\$6995
'67 IH F-1800	\$8500	'53 GMC	\$595
'50 Chev	\$495	'52 Ford F7	\$405
'48 IH KB5	\$695	'64 IH ACOF-192	\$6500

MAGIC VALLEY International, Inc.

Truck Lane West Phone 733-4266
Night phone Bud Teasley 733-4643

PICKUPS

'65 Chevrolet 1/2-ton, V8 engine	Now \$1495
'65 Dodge 1/2-ton, V8 engine	Now \$1395
'63 Ford F-100 1/2-ton, big 6, long wheel base	Now \$1295
'64 Chevrolet 1/2-ton, V8 engine	Now \$1395

Goode Motor

Ford - Mercury
Rupert 436-3136

INTERNATIONAL 1967-1968

Full power and factory air, heater, automatic transmission, 2-tone paint.

"I'm worried about our communication problem with Junior. He used to try to explain things to us!"

OK USED CARS FREE 7 DAY TRIAL PERIOD

Guaranteed Satisfaction Plan

On any used car that you purchase at Glen Jenkins Chevrolet, you will receive a free seven-day trial period. If, for any reason, you are not satisfied with your purchase, you have seven days to change your mind. Bring the car back and pick another car of your choice.

This means you can purchase the used car of your choice with complete confidence. You know you will be satisfied or you can pick another car. This is just another service you get from the Sales Leader of Magic Valley!

Buy Where You Have The Protection Of The Quality "OK" Used Car Dealer Warranty

GLEN JENKINS YOUR CHEVROLET DEALER

313 Main Avenue West Phone 733-3033

WILLS CELEBRATION SPECIALS

'65 Ford	\$1695
'65 Rambler	\$1495
'65 Chevrolet	\$1495
'64 Chevrolet	\$1495
'63 Buick	\$1395
'61 Chevrolet	\$695
'659 Chevrolet	\$295
'659 Buick	\$295

Good Selection of older cars and Pickups

NEW CAR DEPARTMENT

236 Shoshone Street West - 733-2891
Rambler - Jeep - Plymouth - Toyota

LOUIE SLIMAN 733-8158
DEAN EARL 733-8108
DON PFEFFERLE 733-2820

RICE CHEVROLET, Inc. JEROME

20 NEW CARS BY THE 20th

Highest Trades

We Have Cars Coming Out Our Ears So We Have To Make Exceptionally High Trade Allowances - BUT If You Have No Trade -

WOW!

This Offer Is Good From Now Until May 10th

John Chris Motors

Pontiac Cadillac GMC Trucks

Dodge City

The Place To Trade Top Quality Cars Low Prices

The Very Best In Honest Trading

No Phony Deals

Bob Reese's Dodge City

THEISEN THEATRE PRESENTS WHAT PRICE GLORY

James Cagney with Dan Daitley
10-30 Channel 11

SEE THE FOLLOWING CARS AT SPECIAL TV PRICES

1967 MERCURY	1963 CADILLAC
2-door hardtop, 1 owner, low mileage, looks showroom new.	4-door hardtop. Fully equipped, immaculate air conditioning, locally owned, immaculate.
SHOWN BY JACK WALTON	SHOWN BY JACK WALTON
T.V. SPECIAL	T.V. SPECIAL
1961 CHEVROLET	1965 RAMBLER
4-door sedan. Locally owned, new car trade-in, automatic transmission, white wall tires, watch for this one.	Station wagon. This new car trade-in has V8 engine, over drive transmission.
SHOWN BY GREG BYRD	SHOWN BY GREG BYRD
T.V. SPECIAL	T.V. SPECIAL
1960 FORD	1953 DODGE
Fairlane 4-door sedan.	1/2-ton pickup, 4-speed transmission, good tires.
SHOWN BY BOB MYRLAND	SHOWN BY BOB MYRLAND
T.V. SPECIAL	T.V. SPECIAL

THE EASIEST PLACE IN THE WORLD TO BUY A CAR

701 Main Avenue East Phone 733-7700

AMERICA'S NO. 1 ECONOMY CAR IS ALSO AMERICA'S NO. 1 CAR IN RESALE VALUE

Your Dollars will go farther with a new or used Volkswagen

You're Motors

1966 FASTBACK	1965 VOLKSWAGEN
Sunroof, 2-door sedan, 4-speed transmission, radio, brand new Michelin tires. Only 23,000 actual miles.	2-door sedan, 4-speed transmission, radio and heater. Just 23,000 actual miles. Like new.
\$1895	\$1250
1965 VOLKSWAGEN	1962 VOLKSWAGEN
2-door sedan, 4-speed transmission, white wall tires, leatherette interior.	2-door sedan, 4-speed transmission, radio and heater. Check this price.
\$1395	\$795
1964 VOLKSWAGEN	1960 VOLKSWAGEN
2-door sedan, 4-speed transmission, white wall tires. A real nice gas saver.	2-door sedan, 4-speed transmission, radio and heater, new white wall tires.
\$1095	\$595

THIS WEEK'S SPECIAL

1968 CHEVROLET

1/2-ton, long wheel base, fleetside pickup, 307-V8 motor, turbo-hydraulic transmission, power steering, custom cab, radio, chrome bumpers, 2,300 actual miles. Just traded in on a new Volkswagen.

\$2995

SEE RALPH SHARP

For Free estimates on any of your upholstery problems in our custom upholstery shop at the main garage.

Custom Made Seat Covers Our Specialty

GET THE BUG

America's No. 1 Economy Car

\$90 DOWN \$63.50 MONTH

644 Main South Phone 733-6811
Woody Turley Ben Eldredge Jack Cox

Closed Sundays in Respect for Our Employees

BILL WORKMAN FORD

Where We Work For You

1966 CHEVROLET	1967 CAMARO
Impala, 2-door hardtop, V8, automatic, power steering, air conditioning, sharp.	Super sport 2-door hardtop, V8, automatic, power steering, all the extras.
1966 BONNEVILLE	1963 CADILLAC
4-door hardtop, power steering, power brakes, V8, automatic, immaculate throughout.	Coupe DeVille, Full power, air conditioning, new rubber.
1967 VOLKSWAGEN	1966 MUSTANG
2-door 4-speed, low mileage.	V8, automatic, power steering, low mileage.

TRUCKS

1965 CHEVROLET	1966 CHEVROLET
2-ton, long wheel base, V8, 3-speed, 2-speed axle, good rubber.	1/2-ton, long wheel base, V8, 4-speed, radio, heater, heavy duty truck.
1954 GMC	1964 CHEVROLET
2-ton, 4-speed, 2-speed axle, 14 1/2" bed, top shape.	1/2-ton, long wheel base, big 6, 4-speed, radio, heater, hitch.
1967 DODGE	1966 CHEVROLET
1/2-ton, 13,000 miles, V8, 4-speed, long wheel base, with camper.	1/2-ton, long wheel base, V8, 4-speed, low mileage, heavy duty unit.

140 2nd Avenue East OPEN TILL 8 P.M. Twin Falls

Fact-Finding Unit Set At Columbia

By BOB MONKOE
 NEW YORK (AP)—A Columbia University faculty committee has moved to create a fact-finding commission to inquire into the causes of the crisis that has convulsed the Ivy League campus for 10 days.

The 12-member committee—a key group in the effort to end the student protest—took the action Thursday. They agreed the commission should be headed by an outsider but did not decide on its size or composition.

With few exceptions, classes were suspended again Thursday for the university's 2,300 students but some individual units announced they would conduct regular classes today.

Plans and facilities of units affected by the disorders which began April 23 were authorized to extend classes and examinations beyond the previously scheduled academic year to make up lost time.

The students began the protest over the university's construction of a controversial gymnasium in Morrisville Park which separates Columbia from Harlem residents.

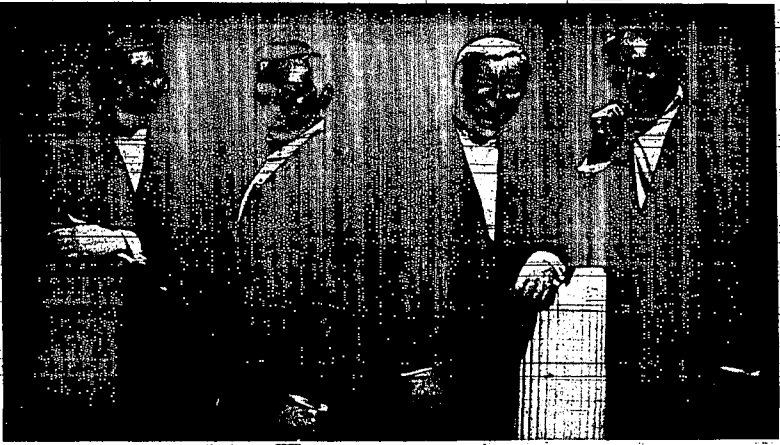
The militants charge the gym on 2.1 acres of land leased by the city in the 30-acre park would deprive Harlem residents of recreational property.

Columbia had said it would consider recommendations for later the faculty committee changes in the basic structure decided to establish the building for Harlem residents but critics termed the concession "separate but unequal" concessions to the protesters.

The board of trustees asked Dan Pellegrini, 31, president of the 12-member faculty committee of the Columbia Student Council—created Tuesday after a plan for a cooperative President Grayson Rice roused demonstrators who struck when classrooms had occupied five campus buildings—said of the plan: "It's impossible to make a similar study of difficult to judge—but it's a beginning."

University trustees agreed to possible structure changes.

66-PROOF-BLENDED WHISKEY 65% GRAIN NEUTRAL SPIRITS © 1968 CALVERT DIST. CO., LOUISVILLE, KY.



THE REVELERS, a male quartet composed of Tom Edwards, tenor; Ray Murcell, baritone; Carl Olsen, tenor; and Doc Savage, bass, will present the final Mini-Cassia Community Concert for the season at 8 p.m. Monday at Burley High School auditorium. They include art songs, folk songs and show songs in their concert.

Male Quartet Will Close Concert Season At Burley

BURLEY—The Revelers, a male quartet, will present the final Mini-Cassia Community Concert for this season at 8 p.m. Monday at Burley High School auditorium.

The group members are Tom Edwards, tenor; Ray Murcell, baritone; Carl Olsen, tenor; and Doc Savage, bass.

If pending singing talent and high standards of musicianship seem a bit old fashioned today, then The Revelers are old fashioned. But it doesn't show because they mix their own fresh blend of taste and talent with such sparkling arrangements and superb showmanship that every performance vibrates with contemporary heat.

Variety is the word for The Revelers' repertoire. Art songs, folk songs, show songs and they sing them all. They sing with such style and beauty that they captivate audiences of all ages.

Their engagements have taken them with unflinching acclaim throughout the United States and Canada.

When they're out entertaining concert audiences, The Revelers get around to some of the top supper clubs and summer theaters. They have performed at the White House.

Listed as one of the best male quartets in America today, they combine a wonderful sound and good showmanship with their musicianship which adds up to a highly satisfactory brand of entertainment. Community Concert officials say.

Valley Traffic Courts

Finued by Jerome Police Judge C. J. Shupp for speeding were Yoshio Aizawa, Jerome, \$10, and Richard Crister, Jerome, \$10.

Finued by Jerome Justice of the Peace Irving Altman for speeding were Dean Leavitt, Blackfoot, \$12; John Wolf, Burleton, \$12; George Hutz, L. Hailey, \$18; Ronald Hooker, Mountain Home, \$14; Martin Geisler, Wendell, \$25; Kenneth Moon, Twin Falls, \$18; Marg Davis, Twin Falls, \$19; David Justice, Kimberly, \$16.

Finued by Judge Altman for violating the basic rule were Howard Wilkins Jr., Pocatello, \$30, and Paul C. Meyers, Jerome, \$10.

Ronald Hooker, Mountain

Open Saturday

SHOSHONE—Bureau of Land Management officials Shoshone announce that the Hailey and Madrasia units will be opened to livestock grazing on Saturday.

The Bellevue Fire Rehabilitation area will be closed to grazing in the Hailey Unit.

Vandalism Is Reported At Glens Ferry

GLENS FERRY—Glenn Spencer, chief of Police Eugene Spencer reported Thursday several cases of vandalism, including breakage of three side glass windows at the Glens Ferry High School.

Estimate of cost of replacement, according to Mrs. Rebecca Montague, clerk of the board of trustees, is \$100. Damage was done apparently with a pellet gun, officers said.

Other cases of vandalism reported were a large window at the Shrum Motor Co., broken by a rock, and the car seat covers belonging to Bobby Carpenter, slashed both front and rear where the car was in off-street parking on First Avenue West in the two hundred block.

A car was pushed from the Shrum's used car lot into the street sometime Friday night, but the vehicle replaced it before is caused any accidents.

You have only 29 days left to celebrate National Tavern Month.

May is National Tavern Month. Calvert Extra is The Soft Whiskey.

Filer Finalist

FILER—Linda Shaff, Filer, daughter of Mr. and Mrs. Edward Shaff, is among five finalists for the May Queen title at the University of Idaho.

The finalists were selected by a student vote and another vote will be held, with the winner announced Saturday. The crowning of the May Queen is one of the activities planned for Parents Week on the campus.

USE TIMES-NEWS WANT ADS FOR FAST-SELLING RESULTS

The "Fun Spots South of the Border"

• Pot of Gold • Fun • Dancing • Refreshing Talent • Eating •

\$100 - \$200 - \$300

"POT OF GOLD" SUNDAY, MAY 5



JIMMY WAKELY

Movies, Television and Radio Renowned Artist Now Appearing in the famous

Gala Room



Doug & Doni
 Refreshing Talent at Gala Stage Bar

DRAWINGS AT	
12 Noon to 2 p.m.	\$100 pot
2 p.m. to 4 p.m.	\$100 pot
4 p.m. to 6 p.m.	\$100 pot
6 p.m. to 8 p.m.	\$100 pot
8 p.m. to 10 p.m.	\$100 pot

All drawings on Series 1 Cactus Pete's Membership card. Nothing to buy. Any person over 21 years of age may obtain membership cards at Cactus Pete's.

Starting at 10 p.m.

\$100 - \$200 - \$300

You May Win at Either Cactus Pete's or Horse Shu

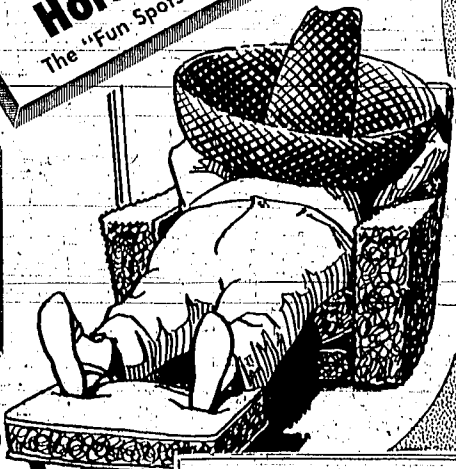
CACTUS PETE'S BUFFETS

Seafood Every Friday Night	Roast Baron of Beef Saturday
Creamy hash, cornbread, bread, butter, prepared by certified chefs, complete assortment of beverages until midnight. All you can eat just \$2.95	Fering Saturday evening in the Gala Room, choice prime beef, country production, and beyond just the way you like it. Dozens of salads from which to choose. All you can eat just \$2.95

Served Family Style In The Gala Room

SOUTHERN FRIED CHICKEN DINNER

ALL YOU CAN EAT SUNDAY \$1.00



Coming Attractions
 LONZO & OSCAR—May 14 to 19
 EDGAR BERGEN & CHARLIE McCARTHY—May 28 to June 2



RANDY SELLERS, left, outgoing president of the Valley FFA Chapter, presents the gavel to the chapter's new president, Rocky Metts, right. Looking on is Del Romer, center, the chapter's star farmer.

Valley FFA Officers Installed

EDEN HAZELTON, new officers of the Valley FFA Chapter were installed during the recent Parent and Son Banquet. The new officers installed include Rocky Metts, president; Gary Roach, vice president; Sidney Brooks, secretary; Randy Sellers, treasurer; Randy Waters, reporter and Eddy McClain, sentinel.

Eden Hazelton, new officers of the Valley FFA Chapter were installed during the recent Parent and Son Banquet. The new officers installed include Rocky Metts, president; Gary Roach, vice president; Sidney Brooks, secretary; Randy Sellers, treasurer; Randy Waters, reporter and Eddy McClain, sentinel.

Along Fences And Canals

The Green Giant Co. is planting sweet corn this week on the W. A. Grievie farm southwest of Tiller.

Ralph Lierman and Rueben Lierman, both Filer, are putting in field corn this week.

Mr. and Mrs. Floyd Clutter have recently sold their ranch in Mr. and Mrs. James Kevan of Fairfield. The ranch is located southeast of Fairfield toward the Fir Grove section. Mr. Clutter homesteaded the original place in 1914 and has added to it until he had 2,300 acres in cultivation. Mr. and Mrs. Clutter have been retired and the place has been farmed by Willie Wilson. Mr. and Mrs. Kevan own a large cattle and farming spread on Camas Prairie. Mr. Kevan is a member of the Gooding Commission Co. and Mrs. Kevan is a member of the Camas County school faculty.

Ranchers in the Almo area have been branding, dehorning and vaccinating cattle and rounding them up to turn them out on summer range.

Docking and branding were done by Eldon Arriaga and Bob Haddock, both Tully, on their stock and were assisted by Elmer Caster, Hagerman.

Fields for corn for feeding are being prepared at Tuttle for planting this week. The winter wheat is being irrigated and much more bean raising is planned.

Herbert Nolwerth, Malta farmer, has left the area and will engage in farming in Fort Hall. His family will join him as soon as school in Malta closes.

Douglas Harper trucked two loads of cattle from his home ranch in Malta to his ranch in Elba this week.

Mr. and Mrs. Don Whitaker have returned to their ranch in Elba after spending the winter in Salt Lake City.

The job of branding, dehorning, vaccinating and marking calves was done this week on the Douillard Chandler ranch in Elba. Helping the Chandlers were his sons, Mrs. Lovina Tuttle, Elba, and his brother, Eldon Chandler, Rupert; George Crofts, Elba, and Pete Harrison, Rupert.

Other ranchers in Elba taking care of their cattle this week were Arthur Ward, Wallace Sears and Ruben Ward.

Mr. and Mrs. John Parke lost their Thoroughbred racing mare last week at their ranch east of King Hill in the birth of a filly. This was precious to find a mare with a newborn colt, so they took a Quarter horse and colt from Mr. and Mrs. Ted Lisle to the ranch to feed the new-born filly but they didn't like the idea so a mare and her colt were summoned from Wendell. The filly is doing fairly well with her new mother.

The Carl Robinson family has moved to the former Max Behr ranch four and one-half miles northwest of Richfield. The Behrs have moved to the Theo Oilleu tenant acreage house in town.

DIESEL TRUCKS

4 - 1965 DODGE D-500
5 speed, 2 speed, 318 V8 engine, tractor equipped, 800 rubber, excellent tires, Average mileage 28,000 to 35,000 **\$2,795**

3 - 1962 INT. DIESELS
Trucks in excellent condition **\$7,000**
YOUR CHOICE

1963 DCOF 4,000
250 Cummins, 5 with 3 speed tandem, new paint, air conditioning. **\$8,500**

1963 MACK DIESEL
300 Cummins, 5 & 3 Mac Eggie, good rubber. **\$3,500**

CLARK MOTOR CO.

436-4761
Hiway 24 RUPERT

Grange Has Warning On Heat Lamps

TUTTLE Grangers were warned to be careful in use of heat lamps for livestock by Vernon Bumgarner, Gooding, meeting of the Tuttle Grange. He suggested that the lamps should be securely fastened in and said that insurance on hay, grain and livestock was available for 7/8 of value. Other insurance could be taken out for the full value, he stated.

Mrs. Ira Kistler, Gooding, state grange lecturer and deputy, talked of her Grange work at the same meeting. She said State Master Ernie Jerome was asking each Grange to formulate two resolutions for consideration at State Grange this year.

She stated that the Youth Fund collected is used for sponsoring winning contestants in the Grange and Princess and the Young Couple of the Year contests to State and National Grange sessions.

Mrs. Kistler announced that the Grange Youth Camp would be held at Lake Cascade, near the Donnelly, for three days, June 28-30. The expense for this would be \$10 per person and any Grange from the age of 14 to 25 might go.

Mrs. Kistler showed slides and gave explanations of them for the Literary Hour. The pictures were taken by her on a trip to National Grange in Syracuse, N. Y. in November of last year.

Gary Bradshaw was voted into membership and a pancake supper was planned for May 15 at the Grange Hall from 6 to 8 to the Commodory Credit Corp. Proceeds will be used to help paint the basement dining room.

Transfer Of \$30 Million Is Approved

WASHINGTON (Special) Rep. George Hansen, R. Idaho, announces that the House Agricultural Committee has passed a resolution calling for the transfer of \$30 million from the Commodity Credit Corp. to the Farmer's Home Administration emergency credit revolving fund.

Rep. Hansen is a member of the House Agricultural Committee.

He said the funds would be used for loans to farmers and ranchers in areas designated by the Secretary of Agriculture with a total disaster has caused a general need for credit.

The funds would be repaid by the Commodity Credit Corp. Proceeds will be used to help paint the basement dining room.

Soil Fertility Makes Sense And Dollars Too With Simplot Fertilizers

WEEKLY AGRICULTURAL WEATHER REPORT

Showing daily high and low temperatures, precipitation and weekly mean temperature for 1967 and current 1968.

1967				1968			
Date	High	Lo	Precep.	Date	High	Lo	Precep.
Apr 24	52	27	.08	Apr 24	57	37	0
25	53	31	.04	25	53	36	0
26	54	32	T	26	55	39	0
27	48	38	T	27	59	30	0
28	42	32	.81	28	71	31	0
29	41	29	T	29	80	37	0
30	43	29	T	30	78	41	0
1967 Mean 59.3°				1968 Mean 50.2°			

30 years average precipitation for April is .93".

AVERAGE SOIL TEMPERATURE at 4" on May 1 is 61°.

Farmers Are Warned On Bean Seeds

Idaho Commissioner of Agriculture, Stanley L. Trenballe, today reminded Idaho farmers that the rules and regulations concerning bacterial diseases of beans prohibits the planting of any bean seed, including their own bean seed, unless the seed was field and windrow inspected by State Department of Agriculture representatives. A report found to be free of halo blight diseases and that no area of the state of Idaho is exempt from this order. Any neglect or refusal to comply with the Bacterial Order might constitute a crime.

This order requires that all Idaho bean farmers plant only those seeds which have been inspected by the Idaho State Department of Agriculture or the Idaho Crop Improvement Association, certifying that the seed has met the qualifications for in-state planting.

These tags are of three types: yellow tags indicate that the bean seed satisfactorily passed field and windrow inspection for bacterial diseases, the yellow tag indicates the seed has been tested by serology and/or greenhouse test and that the seed is apparently free of bacterial diseases and eligible for in-state planting. The blue tag of the Idaho Crop Improvement Association signifies the seed is certified and has met the in-state seed planting requirements.

An exemption was recently adopted which states that "lima, commercial Pinto, commercial Great Northern, commercial Red Mexican, and commercial California Pink beans to be planted in Idaho which have been grown west of the Continental Divide and which have been shipped east of the Continental Divide may be exempt from field and windrow inspection requirement, provided they pass serology and/or greenhouse tests as specifically drawn samples."



OFFICERS OF THE Twin Falls FFA Chapter were installed recently at the chapter's Parent and Son Banquet. From left: Rex Lytle, son of Mr. and Mrs. Ray Lytle, Twin Falls, was named the most outstanding member of the Twin Falls FFA Chapter during the chapter's recent Parent and Son Banquet. Rex Lytle, the chapter's president during the past year, received a wrist watch from Sterling Jewelry for being the most outstanding FFA member. Leonard Kucera, the chapter's advisor, presented the award in behalf of Sterling Jewelry.

Rex Lytle Named Top FFA Member

Rex Lytle, son of Mr. and Mrs. Ray Lytle, Twin Falls, was named the most outstanding member of the Twin Falls FFA Chapter during the chapter's recent Parent and Son Banquet. Rex Lytle, the chapter's president during the past year, received a wrist watch from Sterling Jewelry for being the most outstanding FFA member. Leonard Kucera, the chapter's advisor, presented the award in behalf of Sterling Jewelry.

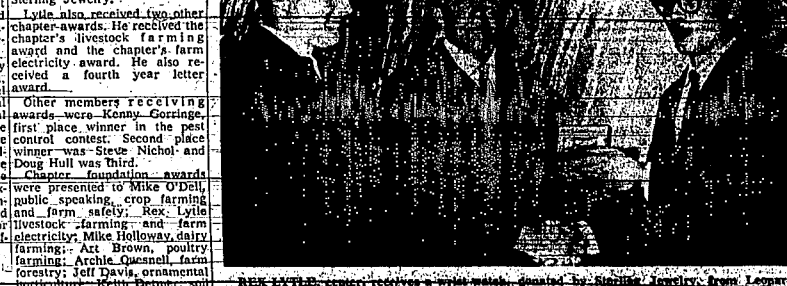
Lytle also received two other chapter awards. He received the chapter's livestock farming award and the chapter's farm electricity award. He also received a fourth year letter award.

Other members receiving awards were Kenny Goringe, first place winner in the pest control contest. Second place winner was Steve Nichol and Doug Hull was third.

Chapter foundation awards were presented to Mike O'Dell, public speaking, crop farming and farm safety; Rex Lytle, livestock farming; and farm electricity. Mike Holloway, dairy farming; Archie Quesnell, farm forestry; Jeff Davis, ornamental horticulture; Keith Bestwick, and water management; Dan Cress, home improvement and farm mechanics; and Tim Smedley, placement in agriculture work.

The chapter's star greenhead award was presented to Bob Hamilton. Hamilton was named the chapter's star farmer.

Life Farmers America



REX LYTLE, center, receives a wrist watch, donated by Sterling Jewelry, from Leonard Kucera, right, Twin Falls FFA advisor, for being the chapter's most outstanding FFA member. Looking on is Mike O'Dell, winner of several chapter awards. Mike received the public speaking, crop farming and farm safety awards and a \$25 savings bond from Green Glass. Rex also received the chapter's livestock farming and farm electricity awards during the recent Parent and Son Banquet.

K

KRENGEL'S

FARM & RANCH VALUES

- FRIENDLY SERVICE
- COMPLETE SELECTION
- EVERY DAY LOW PRICES

NUTS & BOLTS

Carriage and machine. Zinc plated. American made. Cut thread. Largest stock in Magic Valley.

REDI BOLTS

1/4" to 3/4", 2' to 3' length. Plated.

24¢

and up.

ROPE

1/2" to 3/4" sisal, Manila, and Cotton.

1 1/2¢

and up.

BARREL PUMPS

Fits all standard barrels. Easy lift handle.

\$5.95

and up.

Tractor Batteries

Group 1 and 24, 6 volt and 12 volt. 24 month guarantee.

\$9.95

and up. Exchange

FENCE STRETCHER

Golden Rod. American favorite.

\$5.99

BARBED WIRE

80' roll, 12 1/2 gauge. Made by CFI.

\$9.95

Krengel's

• DOWNTOWN TWIN FALLS

WEEKLY AGRICULTURAL WEATHER REPORT

Showing daily high and low temperatures, precipitation and weekly mean temperature for 1967 and current 1968.

1967				1968			
Date	High	Lo	Precep.	Date	High	Lo	Precep.
Apr 24	52	27	.08	Apr 24	57	37	0
25	53	31	.04	25	53	36	0
26	54	32	T	26	55	39	0
27	48	38	T	27	59	30	0
28	42	32	.81	28	71	31	0
29	41	29	T	29	80	37	0
30	43	29	T	30	78	41	0
1967 Mean 59.3°				1968 Mean 50.2°			

30 years average precipitation for April is .93".

AVERAGE SOIL TEMPERATURE at 4" on May 1 is 61°.

Burley - Rupert - Jerome - Hazelton - Twin Falls

Rex Lytle Outstanding FFA Member

Continued From Page A-1
presented to—Marlin—Alfred Richard Birks, Mark Beams, Dan Touchette, Greg Hull, Pete Turner, Jeff Davis, Dan Montgomery, Bob Hamilton, Gary Manning and Bob Billington.

Second year letter awards were presented to Randy Austin, Bob Carr, Ronnie Rhinehart, Doug Hull, Glenn Arlington, Ron Carr, Mike Holloway, Mike Sommer, Bill Barton and Randy McCoy.

Archie Quesnell and Joe Powell received their third year letter pins.

Four year letter pins were presented to—Dan—Cress—Rex Lytle, Mike O'Dell, Tom Billington, Mike O'Dell also received a \$25 savings bond from the Green Giant Co.

Honorary members named were Mr. Kucera and E. J. Sommer.

Guest speaker was Vern Trice, chairman of the Farm Service Agency.

Mike O'Dell also spoke about future farm opportunities in agriculture and what can be done by future farmers.

The new officers for the 1968-69 school year were installed. They are Mike Quesnell, president; Mike Holloway, vice president; Bob Carr, secretary; Glenn Arlington, treasurer; Ronnie Rhinehart, reporter; Tom Hamilton, sentinel; and Bob Hamilton and Mike Sommer, assistant reporters.

Named also was the new chapter—sweetheart, she is Shirley Sommer.

Urea Can Be Useful In Cattle Feed

SHOSHONE — When used in correct amounts and mixed thoroughly in feed urea can be useful in growing cattle, according to Ivan C. Hopkins, county agricultural agent and Wade Wells, livestock specialist of the University of Idaho extension service.

Urea is a non-protein nitrogen compound that is converted to protein by bacterial action in the rumen in the presence of readily available carbohydrates.

These suggestions are offered: Mixtures containing urea require thorough mechanical mixing. Adjusting cattle to feeds containing urea is important. Range cattle may be fed one-fourth of their daily supplement protein for the first three days.

This is gradually increased until they are receiving their full daily protein requirement within two weeks. Urea may provide one-third of the total protein in a supplement. Urea may make up one per cent of the total ration.

Urea is most efficiently used when fed with a readily digestible carbohydrate. For each pound of urea in a mixture add about eight pounds of molasses. Specialists in animal nutrition say urea probably serves no useful purpose when included in a ration that is already adequate in protein.

WINNING TEAM. In a recent East Magic FFA Soils and Land Judging Contest is the Murray FFA team. Farmum Warr, Milner, supervisor of the East Cassia Soil Conservation District is presenting the award to the Murtagh team. Accepting the trophy is Mike Howard, while Charles Davis, center, and Joe Jones look on. Davis was high individual and Jones was an alternate contestant. Second place team was Valley FFA Chapter.

Agri-Business Industries Develop 'People Gap'

SALT LAKE CITY — A "people-gap" has developed in the nation's agri-business industries, according to Alan K. Kindlo, general manager of U. S. Steel Corporation's Farm Service Centers. "We don't want these talented people heading elsewhere for jobs, without talking to us first and learning what we have to offer," he said.

"At the same time, I should mention that each company has its own manpower requirements and minimum standards of qualification. It is necessary to take a college degree to get a good man started on a career in agri-business."

"We're all looking for people who have a feel for selling and servicing farm customers. In short, we need people who know how to communicate with modern farmers," he said.

Kindlo and his staff have recently published an informative brochure on agri-business careers in the intermountain area, discussing the importance of agriculture and describing the challenges of an agri-business career.

Interested individuals should write: USS Farm Service Centers, 10 East South Temple, Suite 1210, Salt Lake City, Utah 84111.

Chairman Named

NEW YORK — John J. Powers Jr., president and chief executive officer of Chas. Pfizer & Co. Inc., has succeeded John E. McKee as chairman of the Board of Directors. Mr. Powers continues as president.

At the same time, J. William Stuart was named chairman of the Executive Committee.

Candidate Speaks Out For Farmers

DRIGGS — "Farmers must have more economic muscle in the marketplace to get a fair price for their product," State Senator Orval Hansen (R-Idaho) candidate for Congress declared during a campaign visit to Teton County.

"The key to higher farm prices is greater bargaining power," Hansen said. "Government programs should be developed to permit and encourage farmers to organize into effective commodity groups for the purpose of bargaining for fair prices without government controls."

"No one is going to pay the farmer a fair price just because he deserves it," Senator Hansen observed. "He must be strong enough to get the market to do so."

equal terms with the buyer of what he produces. Senator Hansen said, "Our priority necessary bargaining strength should be given to the development of a fair share of the national income."

"Almost every other producer and seller of goods and services in America can raise the price of what he sells when his cost of doing business goes up. The farmer cannot. Caught between rising costs and falling prices, the marketplace to get a fair price for their product," State Senator Orval Hansen (R-Idaho) candidate for Congress declared during a campaign visit to Teton County.



SMOOTH-WALL IRRIGATING

CORRUGATORS
Acme High-Speed Corrugators Cut Down Water Waste! Cut Down Erosion! Cut Down Labor Cost! Control Saturation!

ACME
FILER, IDAHO

FACTORY REBUILT MOTORS

For most all make and model cars and trucks
IN-STOCK OR 48-HOUR DELIVERY

CRANK-SHAFT KITS
HOISTS for all size trucks
8,000 lb. WINCH only \$135

"Monroe" SHOCKS For Cars and Pickups
OVERLOAD SPRINGS
BRAKE SHOE EXCHANGE
BRAKE LININGS

For all your needs in NEW & USED AUTO PARTS see us first!

TWIN FALLS AUTO PARTS
Kimberly Road 733-2616

DIST. MANAGER IRRIGATION EQUIPMENT

For Eastern Idaho. Large Acme Company with Idaho Branch. A figure income & car & expenses. Col. Grad. & Farm Sales Exp. prefer. Resume to: Mgr. Box 1079, Twin Falls.

FOR FAST-SELLING RESULTS USE TIMES-NEWS WANT ADS

PROTECT Your Livestock from Disease with Franklin Products

USE OUR LIVESTOCK SUPPLY DEPARTMENT

Save Your Calves

SCOURS

FRANKLIN INFECTIOUS SCOUR TREATMENT and FRANKLIN INFECTIOUS SCOUR BOLUSES

Hazelton Drug

FARM CALENDAR

All Magic Valley Sales Listed Here

MAY 4 MARTIN ADAM

MAY 5 ANTIQUE STATEMENT GEN. INC.

MAY 6 MAGIC VALLEY MOVING & STORAGE

MAY 7

MAY 8

MAY 9

MAY 10

MAY 11

MAY 12

MAY 13

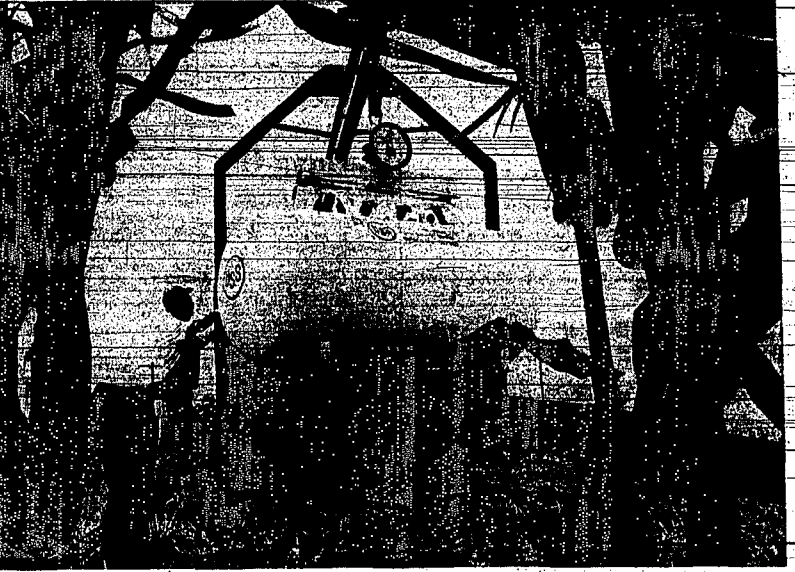
MAY 14

MAY 15

MAY 16

MAY 17

MAY 18

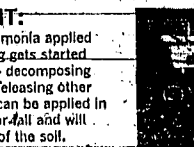
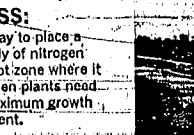


We'll give your crops a nitrogen boost... with versatile (USS) Anhydrous Ammonia

Your United States Steel Farm Service Center can help you achieve higher yields and greater profits through the proper use of anhydrous ammonia — a concentrated nitrogen-fertilizer that can give your crops a boost and can be applied in a variety of ways:

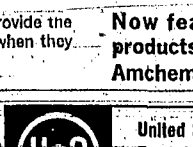
SIDEDRESS:
An excellent way to place a constant supply of nitrogen deep in the root zone where it is available when plants need it most for maximum growth and development.

PREPLANT:
Anhydrous ammonia applied before planting gets started immediately — decomposing residues and releasing other plant food. It can be applied in either spring or fall and will not leach out of the soil.



IRRIGATION:
Anhydrous ammonia in water allows the grower to add needed nitrogen after crops are too tall to sidedress. Irrigation and fertilization are accomplished at the same time.

PLOWDOWN:
A great way to get your plowing and fertilizing done at the same time. Saddle mounted tanks and trailing hoses in the furrows allow nitrogen to be placed deep in the soil.



The Soil Fertility Specialists at your USS Farm Service Center can provide the know-how and the equipment to give your crops a nitrogen boost when they need it — using versatile USS Anhydrous Ammonia.

Now featuring the fine products of Geigy, Amchem and Stauffer

Better growers grow Better!
USS United States Steel Farm Service Center Soil Fertility Specialists
IDAHO GRANGE CO-OP
SHOSHONE • FAIRFIELD • GOODING

PROVEN PROTECTION WITH "BLOAT GUARD"

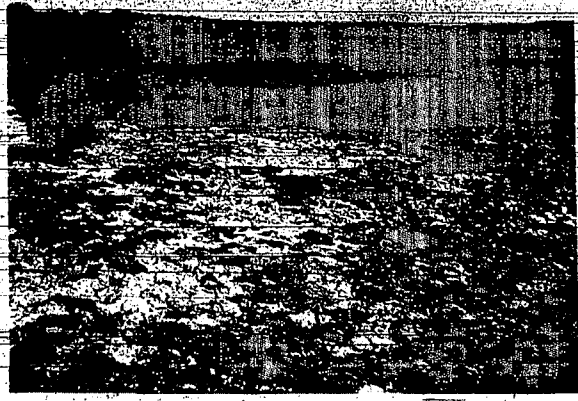
U.S. Food & Drug Administration Approved



- Stops Animal Loss
- Stops Production Loss
- Acts Rapidly . . . Is Palatable
- Is Not Eliminated in Milk
- Is Not Found in Body Tissue
- Is Economical Enough for Practical Use in Feedlot Rations

Why take chances with your livestock?

ALBERS MILLING COMPANY
A Division of Carnation Co.
Truck Lane, Twin Falls 733-4241



GLEN LOGAN, Burley soil scientist for the Soil Conservation Service, looks at vegetation on alkali ground that is provided by nature. This vegetation consists of Greasewood (*Sarcobatus Vermiculatus*) and Saltgrass (*Distichlis Spicata*), a very poor pasture.



THIS ALKALI GROUND, seeded to Tall Wheatgrass, will provide a rich growth of vegetation suitable for grazing, silage or hay production. Farmers with alkali ground are urged to seed Tall Wheatgrass, thus putting this land to use.

Survey Lists Planting Intentions

PHILADELPHIA — The results of a national survey of farmers' 1968 planting intentions for 10 major feed and cash crops are published in the March issue of Farm Journal. Timed to appear early enough to provide readers with advance information that may affect their own cropping plans this spring, this second annual Farm Journal survey was conducted during January among a carefully structured sample drawn from the more than four million farmers' names at the magazine's computer center. Results were tabulated by crop, and by regional and national totals.

The survey was made before farmers had signed up in the feed-grain program and before the final regulations on soybeans had been announced. It is expected that these "early intentions" will be helpful to farmers who may wish to change their

own plans when they see what others are planning.

Among Farm Journal's findings: cotton and rice plantings are estimated to increase 20 percent over last year; while corn, grain sorghum, and winter wheat planting intentions are down by five percent, 13 percent and 17 percent respectively.

Now that the new soybean regulations have been announced, it is anticipated that farmers might not plant as much as the three per cent acreage increase reported in the magazine's survey. This year when soybeans are planted on permitted acreage, this land will not qualify for direct feed grain payments. However, soybeans will again be eligible for price supports.

Economics Editor Claude W. Gifford, in the article accompanying the survey results, comments on a number of the implications raised by the survey and by the 1968 Feed-Grain program.

FOR FAST-SELLING RESULTS USE TIMES-NEWS WANT ADS

Tall Wheatgrass On Alkali Ground Makes Good Hay, Silage Or Grazing

BURLEY — Alkali land of your farm is considered useless except for being a place to park machinery or to serve as a holding pen. Do you have alkali land on your farm? If so, you may be overlooking a possibility to put this land into production, announces Glen H. Logan, soil scientist with the Soil Conservation Service, Burley.

Tall Wheatgrass (Alkali) seeded on alkali land, with good management, may put up to 2.5 pounds of gain per day on grazing beef cattle, produce five to seven tons of hay (under irrigation) per season, or produce up to 72 tons of silage (green weight) per acre.

"In addition, you may want to harvest a seed crop from it occasionally or use it as standing winter hay. If used for the latter purpose, it will provide the needed roughage for wintering cattle but some form of concentrate will be needed, states Logan.

"Some farmers have established beautiful seedings of Tall Wheatgrass and have been unable to utilize it only because they did not follow through with good management.

"With this grass, proper management and handling is the key to success," Logan stated.

Grazing should not be started in the spring until the soil is dry enough to prevent trampling damage and the new plant growth is at least 10 inches high. When plants start to head, you should clip the growth back to a 10-inch stubble to insure palatable green forage.

If you are going to harvest silage, chop the grass between the heading and soft-dough stage and pack it well (this silage is nearly equal to corn silage in nutritional value). You may need to cover the silage with alfalfa hay or beet pulp to properly seal off air.

If it is to be used for hay, cut at the heading stage to obtain a feed with maximum protein content. Chopped hay will insure good utilization.

Logan warned that establishing this grass may be difficult if you do not use proven methods of seeding.

Where saltgrass is growing, plow it under during the hot part of the summer and allow the turf to slither to thoroughly dry before working the soil. Where possible, you should irrigate the field just before seeding the wheatgrass.

"On irrigated land, planting should be done with a deep furrow drill preferably during the spring months of April, May or June. Plant the seed at a depth of one-half inch. Planting too deep will produce a very poor stand. A seeding rate of eight pounds to the acre is adequate. Irrigated lightly but often until the stand is established. Top dress with ammonium sulfate per acre or ammonium sulfate during the growing season, will increase production.

Do not graze new seedings during the first growing season, however, a cutting of hay may be taken. A rotation system of grazing is recommended. Dividing the pasture into at least three pastures will give the best results. This way a pasture can be used for one week and rested for two. When using this system, you must plan your irrigation schedule so that you irrigate each pasture just after the stock have moved to the next pasture.

More detailed information on establishing seedings, managing, and the various uses of Tall Wheatgrass is available at the Burley Soil Conservation Service Office, Overland Shopping Center.

KILLS ROSE PESTS WHILE IT FERTILIZES!

Bigger, brighter blooms!

MORGR0 ROSE FOOD & SYSTEMIC INSECTICIDE provides inside-the-plant protection... kills damaging pests... while it completely fertilizes!

No mess! No muss! Just sprinkle around plants... 5-lb. carton only **\$2.98**

Now you can spray with



New Morgro Liquid Systemic Insecticide

Circulates throughout plant sap system. Bugs bite... die on contact.

1-lb. Sprinkle Carton... **\$2.49**

Or apply protection dry with



Morgro Granule Systemic Insecticide

Just sprinkle on the ground.

1-lb. Sprinkle Carton... **\$2.49**

LOOK FOR THE SPECIAL MORGR0 DISPLAYS

Insist upon quality MORGR0 GARDEN PRODUCTS

GLOBE FEED AND SEED CO.

Truck Lane, Twin Falls
PHONE 733-1373

CUSTOM MEAT CUTTING

CUSTOM SLAUGHTERING ON THE FARM



Custom Poultry Dressing
(by appointment)

BEEF By The Half or Quarter

"Meat Is our BUSINESS — NOT A SIDELINE"

KIMBERLY COLD STORAGE

CLIFF FALLIS Kimberly 423-5284

Potatoes Should Be Watered Early

SHOSHONE — "When do you start irrigating potatoes?" farmers may ask.

"The first irrigation is very important," Ivan Hopkins, Lincoln County extension agent said today. Soil should be moist to a depth of two feet at planting and water should be applied after planting before the 10 percent moisture level is reached. A light irrigation within 30 days after planting is generally advisable.

"Lack of water early in the growing season increases the percentage of malformed potatoes, according to specialists. Tests show that when soil moisture was high at planting and allowed to drop as low as 50 percent before the first irrigation, the number of pointed-end and bottleneck tubers went up. About 60 percent of all malformed tubers during the growing season result from wide variations in soil moisture early in the year.

High moisture at planting that was not allowed to deplete severely before the first irrigation resulted in fewer malformed potatoes.

Research by Galen McMaster,

irrigationist at the Aberdeen branch experiment station, shows that potatoes need a medium to high soil moisture content to produce the best quality crop, sixty per cent or more of the available moisture should remain in the root zone through the major part of the growing season. This permits water to be used efficiently. If the soil gets too dry, bottlenecks and points result.

"Total yields and quality are the most important criteria for judging irrigation treatments. When potatoes were planted in soil with moisture content below 50 per cent, there was a general decrease in yield of U.S. No. one potatoes.

"An early light irrigation is desirable. That means enough water to cover the fields as quickly as possible without eroding or puddling up. It should provide the plants with enough moisture for steady growth without yeast or famine.

When you buy New Holland early... your whole family benefits!

Now's the time to buy your new New Holland baler or forage harvester, Early. Before your crop comes in. Here's why. When you buy during April or May, you take advantage of **Early Buyers' Bonus**... the pre-season program that earns you valuable premiums. For example, a new self-propelled machine earns a "table-model color TV." If you prefer, a choice of two other exciting gifts. Pull-type units earn big gifts too! Choice of black and white portable TV, electric drill, adding machine, portable typewriter or a special family kit.

But remember! Offer is good only during April and May. And only on new New Holland balers and forage harvesters. Stop in soon for complete details.

NEW HOLLAND
DIVISION OF SPERRY RAND

SEE THESE AT —

ANDY & BOB'S

Motor Company

YOUR WEST-END DEALER FOR
ALIS-CHALMERS AND NEW HOLLAND

Phone 543-4318 BUHL

LAWN MOWER SALE

"EVERSHARP"
20 inch
ROTARY

With 3 H.P. Briggs & Stratton Engine.
REG. \$49.99

\$30⁹⁵
With Trade*

SEE US FOR YOUR BEST BUYS on GARDEN HOSE

Rubber or Plastic
All Sizes... Colors

"MUSTANG"
22 inch
ROTARY

With 3 1/2 H.P. Briggs & Stratton Engine
Wheel Height Adjusters
REG. \$79.95

\$49⁹⁵
With Trade*

"Eversharp"
21 inch
ROTARY

Regularly \$84.95

\$59⁹⁵

With Trade*

- 3 1/2 H.P.
- Wheel height Adjusters
- Streamlined Engine
- Gas Gauge
- Push-Button Primer



"BONANZA" 32 INCH 7 H.P.

RIDING MOWER

Big 7 H.P. engine, oversize tires for traction and floatation.
3 Speeds forward, plus reverse. Blade can be disengaged for use as a garden tractor. Rear carrying compartment.

REGULAR \$459.95

\$369⁹⁵

With Trade*

*Trade In must be in running, usable condition.

You can rely on the old reliable for the best in quality at lowest prices.

SPECIAL! ENDS MAY 13th 10-DAYS ONLY!

With Each OIL and FILTER Change We'll Give a

free WASH Job!

<p style="text-align: center;">TIRE ROTATION</p> <p style="text-align: center;">All 4 wheels \$1⁰⁰</p> <p style="text-align: center;">WHEEL PACK</p> <p style="text-align: center;">2 wheels \$2⁵⁰</p>	<p style="text-align: center;">LUBE JOB</p> <p style="text-align: center;">Cars or pickups \$1⁵⁰</p> <p style="text-align: center;">WHEEL BALANCE</p> <p style="text-align: center;">Per wheel \$1⁰⁰</p>
--	--


AT OUR TWIN FALLS SERVICE STATION ONLY!

UNITED OIL OF IDAHO

KIMBERLY ROAD 733-7033

AVAILABLE ONLY AT —

"That o-o-old Reliable"



and

OB Supply Co.

733-9233

Jerome Agent Offers Tips For Farmers

JEROME—Wilmer Priest, Jerome County Extension Agricultural Agent, offers these bulletins on the irrigation of grain wheat and "Use of Dystonin Controlling Potato Leaf Roll."

The water requirements of grain wheat are both larger and earlier than the requirements of spring wheat. Roughly 40 per cent of the water is needed before stooling is complete and 40 per cent between stooling and the milk stage, and 20 per cent following the milk stage.

Grains wheat planted during the first half of October will complete its stooling and start to form the head between the 15th and 30th of May, while wheat planted during the first half of July. The stooling stage on grains is earlier than with spring seed wheat.

Delayed irrigations during the early part of the growing season causes set back in growth which can not be compensated for by extra irrigations later in the season. The irrigations need not be heavy water completely fill the soil with water.

Preliminary results from a long term irrigation experiment at the University of Idaho Station show that an irrigation program which started April 4th, let the soil moisture drop to 20 per cent available moisture between irrigations, and in which the moisture content was maintained between 20 per cent available moisture and field capacity during the first half of the growing season produced the highest yield, the highest protein content, a shorter strawed grain, and a higher sedimentation than did the plots maintained at a high moisture level (40 per cent available moisture at time of irrigation).

Soil at a 20 per cent available moisture content is dry to the touch and crumbly when squeezed by the hand.

Present indications are that quite a few potato growers plan to use Dystonin controlling potato leaf roll. Where leaf roll infected seed is planted, this material can also be used in preventing its spread by the green peach aphid.

"In using this material, you should have a lot of respect for it. Dystonin in the granular form is moderately hazardous and must be used with caution. Dystonin in the liquid form is extremely hazardous and should be used only when all of the precautions listed on the label are strictly followed.

If you plan to use the liquid form, make sure that you and your equipment are both properly decontaminated. Have someone who knows the material and who is prepared to handle it with the respect it deserves.

Grubs Costly

Cattle grubs cost livestock producers in the United States at least \$102 million annually. Treatment with an insecticide can reduce this loss and add cash to producers' pockets.



EXAMINING A Soil Stewardship booklet with Mrs. Glen Nelson, Twin Falls, state president of the ladies auxiliary of Idaho Association of Soil Conservation Districts. Mr. Nelson, Gov. Samuelson has proclaimed May 18-28 as Soil Stewardship Week.

Soil Stewardship Week Set

Soil Stewardship Week will be observed throughout the area as well as the state May 18 through May 28, which has been proclaimed as Soil Stewardship Week by Gov. Don Samuelson. This observance in churches across the state, places emphasis on man's obligation to God as stewards of our soil and water resources. The Twin Falls District's auxiliary will attempt to get more education to people, teachers and children to better understand what soil and water conservation means.

Themes for this year's stewardship week is "A Time for Initiative." This endeavor to bring home to every citizen the need to recognize and discharge his responsibility as a steward of our soil and water and to remember that we are all dependent on these resources for his very existence. He also has a responsibility to preserve it.

Soil Stewardship week is sponsored by soil conservation districts and the state director of the ladies auxiliary of Mrs. Glen Nelson, Twin Falls, state president.

According to Mrs. Nelson, "Every year more attention is focused on the urgency of soil stewardship and resource management with the population explosion which is supposed to reach world hunger stage in the year 2000, our urban growth brings valuable land into agricultural for interstate highways and more time for recreation demands more work and care to keep our woodlands

and forests as God made them. The present day conflicts, harassments, which show up constantly show the existence of bleak visions of life ahead and feelings of constraint. The coming generations must be educated — tomorrow's adults, growing up in large cities will be estranged from fields, forests, countryside and water- sheds. On which they must forever depend. What will they know about topsoil, runoff of rain, agriculture, forest management or values of wildlife?

"We have a moral responsibility to our children as well as the resources entrusted to us by our maker, to advocate education in conservation."

"No aspect of stewardship is more urgent and proclaiming Soil Stewardship is one program we have of bringing the message of such, home to our adults and to their children."

Mrs. Ellis Fuller, president of the Twin Falls Soil Conservation District Auxiliary, has promoted conservation posters and the Soil Stewardship program is designated as the women's work program.

Applications for taking the examinations may be obtained from the Idaho Personnel Commission, Capitol Building, Boise, Idaho 83707.

Applications must be post-marked no later than midnight May 29.

Examinations for a sheep inspector for the Jerome and Sun Valley areas are now open, according to the Idaho Personnel Commission.

The inspector will inspect sheep and goats in the prevention, control and eradication of diseases of sheep and goats to be related work as required.

The salary ranges from \$374 to \$456 a month.

Qualifications includes any combination of education and experience equivalent to graduation from high school and two years of experience in some phase of sheep industry which provided knowledge of the diseases of sheep and goats.

Applications for taking the examinations may be obtained from the Idaho Personnel Commission, Capitol Building, Boise, Idaho 83707.

Applications must be post-marked no later than midnight May 29.

Tests Open For Sheep Inspector

Tests Open For Sheep Inspector

Tests Open For Sheep Inspector

Tests Open For Sheep Inspector

Tests Open For Sheep Inspector

Tests Open For Sheep Inspector

Tests Open For Sheep Inspector

Tests Open For Sheep Inspector

Tests Open For Sheep Inspector

Tests Open For Sheep Inspector

Tests Open For Sheep Inspector

Tests Open For Sheep Inspector

\$180,000 Loan OK'd For Grazing Group

HAZELTON—Approval of a \$180,000 Farmers Home Administration insured loan to six Idaho farmers for the purchase and development of a grazing area was announced by George M. Klein, the agency's state director.

The loan funds will enable the Hidden Paradise Grazing Association of Jerome County to purchase 145 acres of land in the Fairfield area. This grazing development is expected to add another \$58,000 yearly to the economy of the county while strengthening the family farms of the participating members.

"State Director Klein emphasizes that the project was made possible by the cooperation of a number of individuals, groups and agencies. Other organizations working with the grazing association were the U.S. Department of Agriculture's Soil Conservation Service, Agricultural Stabilization and Conservation Service, Forest Service, and the U.S. Department of Interior's Bureau of Land Management.

A range manager is to be hired by the association, extension of Jerome County to purchase 145 acres of land in the Fairfield area. This grazing development is expected to add another \$58,000 yearly to the economy of the county while strengthening the family farms of the participating members.

"State Director Klein emphasizes that the project was made possible by the cooperation of a number of individuals, groups and agencies. Other organizations working with the grazing association were the U.S. Department of Agriculture's Soil Conservation Service, Agricultural Stabilization and Conservation Service, Forest Service, and the U.S. Department of Interior's Bureau of Land Management.

New Setbacks For Dairy

Farmers Seen

WASHINGTON (AP)—The Agriculture Department expects further setbacks this year for dairy farmers.

It predicted in a dairy situation report today that the demand for milk and dairy products will continue to surge this year in face of government studies showing the dietary level of half of all Americans is inadequate because they don't consume enough dairy products.

The report also forecast the fourth consecutive year of decline in milk production and a continuing movement of dairy surpluses into government hands under a price-support program.

The department also forecast another decline this year in the number of dairy cows. Milk production declined last year and dairy cow numbers declined 3.5 per cent to a new low of 14.7 million head.

The report said also that so far this year, production of butter and cheese is running 6 and 5 per cent respectively under a year earlier.

A world surplus of milk production and of manufactured dairy products was said to be helping to provide an unfavorable climate for the dairy industry, because some countries are subsidizing exports in efforts to unload excess supplies.

The report said, however, that 1968 might turn out to be more favorable than last year's poor one for dairymen.

Reporting a heavy decline in commercial sales of milk and dairy, Idaho last year, the department said there was a possibility sales may level off this year in view of prospects for an increasing population, little change in retail prices, and a continued rise in employment and wages.

ATTEND CHURCH

BUHL—Twenty-five members of the Cedar Grove church attended church services at the Buhl Presbyterian church as to Church Sunday. Following the service, a picnic was held at Balanced Rock with the afternoon being spent fishing and socializing.

STACK YOUR HAUL DUMP

STACK YOUR HAUL DUMP A FULL LOAD AT A TIME

• ALL-PURPOSE TRUCK
• HYDRAULICALLY OPERATED PUSH-OFF TRUCK
• INTERLOCKING PALLET-TENTS WEATHER
• TRUCK STACK OVER 15 FEET HIGH
• HAVING CREW, 1 MAN'S TRUCK DRIVER
• RETRIEVAL FROM STACK
• ALL-PURPOSE TRUCK BED PLUS OPTIONAL GRAIN SIDES & COLLAPSE REAR END
• POWERFUL HOIST FOR DUMPING

For the name of your nearest dealer or free literature call or write to:

MISKIN
SCRAPER WORKS, INC.
UCON, IDAHO • PHONE 322-2130

HAVE EFFECTIVE PROGRAM

An effective grub control program makes cattle more desirable to the buyers.

"Gleaner" COMBINE SCHOOL

TUES., MAY 14th 8:00 P.M.

Introducing the New 1968 "GLEANER"

COFFEE and DONUTS

Come on out next Tuesday evening... 8 P.M.

MOLYNEUX MACHINERY CO.

Floral Avenue Twin Falls

Stack your haul dump a full load at a time.

• ALL-PURPOSE TRUCK
• HYDRAULICALLY OPERATED PUSH-OFF TRUCK
• INTERLOCKING PALLET-TENTS WEATHER
• TRUCK STACK OVER 15 FEET HIGH
• HAVING CREW, 1 MAN'S TRUCK DRIVER
• RETRIEVAL FROM STACK
• ALL-PURPOSE TRUCK BED PLUS OPTIONAL GRAIN SIDES & COLLAPSE REAR END
• POWERFUL HOIST FOR DUMPING

For the name of your nearest dealer or free literature call or write to:

MISKIN
SCRAPER WORKS, INC.
UCON, IDAHO • PHONE 322-2130

Last call for "Operation: Weed and Insect Control"

By this time you should have all the crop-protecting pre-emergence weed killers and soil insecticides you need for planting. If you don't, better call your American Oil Farm Man right away... before his supplies run out. He has the AMOCO Products and other farm-proved chemicals you need to knock out both weeds and insects before they crimp your crop profits. And if you're still in doubt about the chemical control that's best for you, he can also give you expert recommendations based on his training and experience. So call your American Oil Farm Man for solutions to all your weed and insect control problems. And remember, if you're in need, he'll deliver 24 hours a day, seven days a week, including holidays. Ag Chemicals... another quality reason to farm with American Oil.

You expect more from American and you get it!

For the insecticides and weed killers you need, call your American Oil Farm Service Center or your American Oil Farm Man.

OFFICE: Eastland Drive—South PHONE: 733-9005

BUHL EDEN
T. J. (Bud) Rodgers Dan Black
543-6192 888-9914

GOODING TWIN FALLS
Claude Scanlon E. E. (Ed) Hadden
924-4181 788-0741

BURLEY Larry Adams 678-8082

TWIN FALLS FARM SERVICE CENTER

READY MIXED CONCRETE FOR ALL PURPOSES

COUNT ON US FOR QUICK RELIABLE SERVICE ... ANY AMOUNT

• FOR ALL JOBS AROUND THE HOME... RANCH... BUSINESS Commercial or Industrial

When your job calls for concrete, call us. We are specialists in ready-to-use concrete, know the business and have the most modern equipment to do the job right.

Just Call Collect 326-4326 Filer

READY-MIXED CONCRETE

SHERIDAN BUILDING SUPPLY, INC.

SPRING SAVINGS "HI-VALUE" TRUCKS & PICKUPS

1963 GMC C-1000 1/2 TON V8, 4-speed, Excellent condition.	\$875
1954 CHEVROLET 1/2 TON PICKUP.	\$195
1957 GMC MODEL 5-112, Long wheelbase, 4-speed, big 6 engine.	\$450
1965 GMC SCOUT 4x4 with everything, Full cover. A real buy of	\$1850
1951 GMC MODEL L-162 2-TON Duels, 3-speed, best and cattle bed.	\$895
1965 GMC TRAVEL-ALL, Excellent condition.	\$2195
1959 GMC 2-TON, Long wheelbase, 2-speed, 14 ft. flatbed and hoist.	\$1995
1962 CHEVROLET 1/2 TON FLEETSIDE PICKUP. New engine, Excellent condition.	\$795
1958 GMC A-162 2-TON, Long wheelbase, 5-speed, 2-speed, Duels and beef bed.	\$950
GMC MODEL L-112 1/2 TON PICKUP. Big engine, 4-speed transmission.	\$475
1964 GMC BASKETBALL, Excellent condition, ready to go. Blowback	\$1195
1958 TRUHOAC 35 ft. 18 yd. dump Dump semi-trailer, dual axle.	\$3295
3-18 FT. FLAT RACK HAY BIDS with averhoist, Piled, each	\$175
1966 GMC MODEL 1700-CAN-AND-CHASSIS, Long wheelbase, 5-speed, 4-speed, excellent, new tires. (Will add for sale to suit buyer) Price, each is	\$4295
1968 GMC 1/2 TON PICKUP, Bonus Load, Big 6 engine, 4-speed, 2-speed, 14 ft. flatbed, twin axle, dual tires.	\$1195
1957 GMC 2-TON, Long wheelbase, big 6 engine, 5-speed, 2-speed, 825x20 duels, 18 ft. flat rack with head, tail and side, boards, also 18 dump hoist.	\$3450
	\$1795

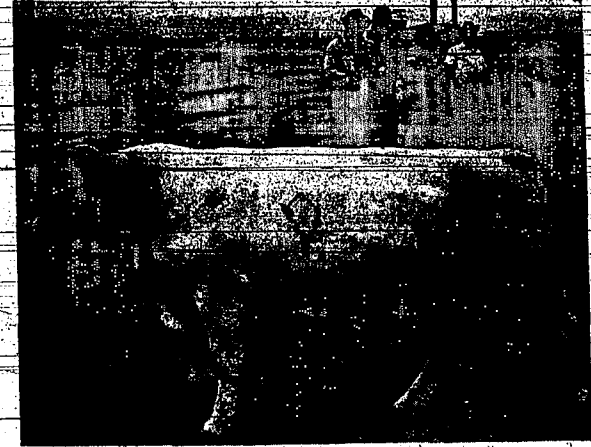
Cameron's SALES INC. RUPERT
HI-WAY 24 SO. 436-3191

GOODING.—A bull performance testing program has been completed in Gooding county. The testing program was for 140 days set up at the Parker and Nelson Beef Cattle Evaluation Center to measure the animal's ability to grow, convert feed to gain, produce and wean a calf or to yield a high-quality carcass. Performance testing also gives the breeder an official record of an animal's capability.

The just completed test be- Harris and Freeman Livestock Co., Wendell. It showed a total gain of 589 pounds for all average second-daily gain of four pounds. The second group had 21 senior Charolais owned by Farrell and a Katy Lemore Charolais Ranch, Mt. Vernon, Ore. This bull gained 140 days test, averaging 439 lb and 585 pounds with an average average daily gain was 3.13. Two red Angus bulls owned by Stapp and Gooding, Gooding, showed total gains of 408 pounds and 404 pounds, respectively.

A final report shows that 1391 farms in Twin Falls County have been signed up for participation in 1968 ASCS commodity programs. Carl Boyd, chairman, Agricultural Stabilization and Conservation Committee, said today. The programs are for wheat and feed grains. Signups for such programs ended March 6. The chairman released the following county totals for the slumps conducted at the ASCS county office for the 1968 commodity program: Under the 1968 farm program 84 farms were signed up to divert 860 acres of corn or grain sorghum, or 58 per cent of the total base of cropland payments will be available under this year's program to participants on larger farms who divert more than the minimum. Prices support payments and loans on corn and sorghum will be available only to program participants.

PUMPS
For all purposes
Sales - Service -
Installation
FINANCING AVAILABLE
PUMP & EQUIP. CO.
We Service All Makes
127 So. Park 733-7841



ONE OF THE Charolais bulls on a 140-day performance testing program is being graded by Wade Wells, left, extension animal husbandman, and Ed Koster, Gooding County agent, second from left. This bull was one of about 40 bulls on the test at the Parker and Nelson Beef Cattle Evaluation Center near Gooding.

The ration fed the junior bulls was a growing ration for 150 days. One head of the research division of the Ralston Purina Co., and Kermit Wolf, Twin Falls, Ralston Purina Co., supervised the weighing and grading of the bulls were Ed Koster and Ed Brown, Gooding County agents.

The 21 senior bulls tested, fed on a wintering ration, showed a total gain of 5,383 pounds, averaging 254 pounds per bull and the daily average gain of 2.11 pounds. These bulls were consigned by Breeding Charolais Ranch, Murtaugh; Harris and Freeman Livestock Co., Wendell; Farrell and Katy Lemore's Charolais Ranch, Mt. Vernon, Ore.; Stapp and Stapp, Gooding, and Parker and Nelson, Gooding.

Grading the animals the final weighing day was at the Wells, Boise, University of Idaho extension-animal husbandman, Ed Koster, Gooding County agent, and Billings, Mont., Charolais breeder.

Another test program is planned for June on fall calves and another in October. Gooding County agent, Nelson, manager of the center.

Wheat farms signed up under the 1968 program total 1391. These farms represent 68 per cent of the county's total wheat marketing orders, withholding actions and government supervised marketing boards. Speakers will also discuss the proposed bargaining programs of the major national farm organizations, such as National Farmers Organization, the National Farmers Union, Grange, Farm Bureau and Federation of Farm Cooperatives.

Bargaining Power Session Set May 23-24 At University
MOSCOW — A "Bargaining Power" session will be conducted on the campus of the University of Idaho May 23 and 24. It was announced today by Ward Meadows, American Farm Bureau director, and Chairman of the Idaho Wheat Commission.

Producer groups from the wheat industry in Idaho, Washington, Oregon and Montana, cooperate with the University Department of Agricultural Economics in presenting a two-day symposium program. Invited speakers from several colleges, the U. S. Department of Agriculture and the major national farm organizations will discuss the bargaining principle as it relates to more effective marketing of wheat.

WATCH THESE COOL NIGHTS and SPRING RAINS!

DON'T RISK LOSS OF STOCK

HELP CONTROL BLOAT WITH BANNER CHEMICAL

and

MINERAL COMPOUND

With Trace Minerals Added
Mixed with your SALT and FEED

Ask your feed dealer to supply you, or contact us.
"REGISTERED IN THE STATE OF IDAHO"

BANNER CHEMICAL AND MINERAL COMPOUND already mixed with salt available at

Globe Seed & Feed Co.
Twin Falls, Idaho Phone 733-1373

Interest In Bull Sells For \$85,000

DOUGLAS, Kan.—A one-third interest in a pure French Charolais yearling bull sold for a record \$85,000 at the Lauright Ranch Charolais dispersal sale near here earlier this week.

H. D. Sawyer, managing partner of the ranch, said as far as is known, this was the highest price paid for a Charolais bull in the United States. Judging from the sale price, the bull is valued at about \$255,000.

Purchaser of interest in the bull is Fred L. Gaddis, Forest, Miss. Other owners are Lester Laue, Hanover, Kan., and Mad Ranch, Blanco, Okla.

The bull, purchased at Calgary, Canada, for \$13,000 and brought to Lauright Ranch at the age of 3½ months. This bull holds the yearling weight record for weight gains, weighing 2,979 as a yearling on March 17.

Woolworth Buys Potatoes From Idaho

NEW YORK — The amount of potatoes purchased by the F. W. Woolworth Co. from Idaho at the 1967 potato marketing areas during 1967 reached a new record for the seventh straight year.

Purchases totaled more than 16,785,000 pounds during the year, it was reported by H. W. Bode, vice president of restaurant operations for the variety department store chain.

"It is a policy of Woolworth's to buy potatoes wherever possible," he said, "and this benefits not only local wholesalers and farmers but many others in the state employed in production and distribution."

The company serves in the United States and Canada more than one million people daily in its 1,064 luncheonettes, restaurants and cafeterias. Twenty-five educational centers, a law library, a house and are open seven days a week. Mr. Bode said, "These facilities can seat more than 100,000 persons at one time. Indicative of the size of the company's food operations are these totals of some of the items served: 20,370,000 hamburger sandwiches and platters, and 71,000,000 pieces of apple pie.

CONTINUING OUR SALE OF USED SPRING EQUIPMENT POTATO PLANTERS

672 INTERNATIONAL, 2 ROW	\$175.00
689 IRON AGE, 2 ROW	\$75.00
695 INTERNATIONAL 2 ROW	\$175.00
803 INTERNATIONAL 2 ROW	\$175.00
812 INTERNATIONAL 2 ROW	\$175.00
700 IRON AGE, 4 ROW	\$650.00
622 1967 ACME, 4 ROW (LIKE NEW)	\$2,500.00
000 INTERNATIONAL 4 ROW	\$650.00
941 IRON AGE, 4 ROW	\$575.00
837 JOHN DEERE, 2 ROW	\$50.00
858 JOHN DEERE 4 ROW	\$200.00
865 JOHN DEERE 2 ROW	\$175.00
867 JOHN DEERE 2 ROW	\$225.00
858 24' DIPPING TABLE	\$25.00
842-1967 LOCKWOOD SEED GRADER	\$2,650.00

LOCKWOOD GRADERS
IRON AGE SALES AND COMPLETE STOCK OF PARTS
PHONE 436-4701 RUPERT, IDAHO

"NEW HOLLAND" HAYING EQUIPMENT

In stock... Ready to go! See us now! Buy early for the Best Deal! WE HAVE:

BALERS:

- No. 268 P.T.O. STRING BALERS
- No. 275 P.T.O. H.D. STRING BALERS
- No. 282 STRING & WIRE-TIE BALERS
- No. 285 CUSTOM OPERATOR BALERS String & Wire Tie
- No. 1282 BALERS, Self Propelled, String & Wire Tie

BALE WAGONS:

- No. 1030 PULL TYPE, 2 Wide
- No. 1044 PULL TYPE, 3 Wide
- No. 1035 SELF PROPELLED, 2 Wide
- No. 1046 SELF PROPELLED, 2 Wide
- No. 1047 SELF PROPELLED, 3 Wide

M & M EQUIPMENT
PHONE 324-5200 JEROME

GALAXY OF VALUES

at Your Case Dealer

Take a trip on Cloud 9

You'll be flyin' high and dealin' low with the complete line of Case Farm Equipment. These are the big tough machines with the small, gentle price tags.

Top Value-In Re-conditioned Equipment

NEW THIS YEAR
878 Windrower 12 Ft. Cut

Here's the first of its kind in the field—a pull-type windrower with 12-foot header—enough to handle 50 acres a day. PTO is fully enclosed, runs inside drawbar, safely and quietly. The 878's wide header delivers extra field capacity and it's supported by an extra-heavy rugged, box-welded frame. Crops are cut off directly into the extra-wide conditioner (there's no dropping crop on the ground, then picking it up again) conditioning—steel and metal—rubber rolls—fully condition for fast, clean, open wide to resist plugging.

Check With One of These Magic Valley CASE DEALERS

GOODING TRACTOR & IMPLEMENT CO.
C & R EQUIPMENT CO.
PAUL
WHITELEY SERVICE, OAKLEY

WENDELL EQUIPMENT CO.
REED TRACTOR CO.
TWIN FALLS

Where Service Is something to shout about!

Nevadan Is Chairman Of National Unit

RENO—Dr. Ray E. Ely, associate director of agricultural experiment stations at the Max C. Fleischman College of Agriculture, University of Nevada, was recently named as chairman of a national advisory committee to the United States Secretary of Agriculture.

The committee acts in an advisory role to the secretary in matters of regional agricultural research and under the cooperative program of the United States Department of Agriculture and the Land Grant Colleges and Universities. There are nine persons on the committee, two each from the four geographical regions in the country and one representing the developing home economies. Dr. Ely was elevated to chairman at a meeting of the committee held at a national university in Washington, D. C.

Functions of the committee include the coordination of agricultural research in the regions and on a national scale. It also has the responsibility of recommending areas of high priority in such research to the secretary. In addition, the committee recommends policies under which the research program is carried out, funded and administered. The work of the group is geared to the national programs of research for agriculture carried on in cooperation with the agricultural experiment stations.

Dr. Ely has been at the University of Nevada for the past eight years. Previous to this he spent 12 years with the United States Department of Agriculture at the Beltsville, Maryland National Agricultural Research Center and in administration, Washington, D. C.



OUTGOING PRESIDENT OF THE Buhl FFA Chapter, Neal Gier, left, hands the gavel to Russell Wagner, the chapter's new president, who was installed during the chapter's annual Parent and Son Banquet.

Awards Are Presented To Buhl FFA Members

Buhl—Several awards were presented during the Buhl FFA Chapter's annual Parent and Son Banquet recently. Lynn and Lyman Caughey, Bean Growers Association, presented the chapter banner award to Marshall Schroeder, winner, and Neal Gier, alternate. George Parsons received the best growing award from Raymond Hills, Amalgamated Sugar Co.

Letter awards were presented by Russell Wagner, outgoing vice president. Receiving these were Tom Svancara and Neal Gier, senior; Armand Eckert, Norman Eckert, Russell Wagner, and Ernie Quinton, juniors; G. O. R. G. Wagner, Jack Southwick, Marshall Schroeder, and Allan Wetzel, sophomores; and Jim Blair, David Hart, Larry Henson, Lynn Askew, Ralph Nipper, Jeff Harper, Myron Patger, and Bob Haviland, freshmen.

Carl Leth, vocational agriculture instructor, presented the outstanding supervised farming award to Tom Svancara, Neal Gier, senior, Armand Eckert, Norman Eckert, Russell Wagner, and Ernie Quinton, juniors; G. O. R. G. Wagner, Jack Southwick, Marshall Schroeder, and Allan Wetzel, sophomores; and Jim Blair, David Hart, Larry Henson, Lynn Askew, Ralph Nipper, Jeff Harper, Myron Patger, and Bob Haviland, freshmen.

Payoff Dinner Given At Hansen

HANSEN—The "Payoff Dinner" was given by the losing Green team to the winning Red team members of the Modern Woodmen past six months' rifle contest at the Tuesday night meeting at the Woodman Hall.

Gifts were presented to the best individual winners, Leroy Thompson, for the men, and Mrs. Ruth Hill, for women.

At the evening shoot, the Red team, with eight members present, shot a score of 241 points, to win over the Green team, which garnered a score of only 261 points.

Joe Hill was high individual man with 52 points; Leroy Thompson, second with a score of 51, and Norville Reynolds, third, with a score of 46.

Mrs. Ruth Hill and Mrs. Minerva Smith tied for first place for women with scores of 50 points. Sharon Truscott and Mrs. Vivian Bragg, each with a score of 47, tied for second place. Lydia Paxon was third with a score of 40.

GOVERNOR TO SPEAK
BOISE (AP)—Gov. Don W. Samuelson will speak Saturday in Pocatello at a meeting of the Idaho chapter of the International Association of Personnel in Employment Security.

Farmers Lose More Ground During April

WASHINGTON (AP)—Farmers lost more ground during April in efforts to improve their buying power.

The Agriculture Department reported Monday that if farm prices in mid-April for goods and services used in farm production and in a family living went up three-fourths of one per cent.

Prices paid by farmers in mid-April set a new record high. These prices were 4 per cent above a year earlier.

Between mid-March and mid-April set a new record high. These prices were 4 per cent above a year earlier.

Between mid-March and mid-April set a new record high. These prices were 4 per cent above a year earlier.

Between mid-March and mid-April set a new record high. These prices were 4 per cent above a year earlier.

Between mid-March and mid-April set a new record high. These prices were 4 per cent above a year earlier.

Between mid-March and mid-April set a new record high. These prices were 4 per cent above a year earlier.

Between mid-March and mid-April set a new record high. These prices were 4 per cent above a year earlier.

Who Makes Sugar Best? Twin Falls Claims Coveted Title This Year

Industrial efficiency contests for exceeding that rate while Nyssa, with a capacity of 6,700 tons, would be penalized for falling below its slicing rate.

But it's not just the speed of operations that counts. The other "measures" of performance are the efficiency of the overall production effort. Use of 100 much coal or lime rock suggests inefficiency at one or more of the key stations in beet sugar processing. If the pulp has too much moisture, it means the press area's working hard enough and the pulp drier will be overworked.

The factory that does everything just right, precisely at the standards established for it, would end the year with a rating of exactly 100. To be within one point of that, in either direction, suggests a very good performance. In that sense, the 1967-68 competition was a very close one according to Amalgamated's operating superintendent, Vice President Burnell Brown.

"We saw new slicing records established and increased molasses production at almost every location this year," Brown comments. "The sugar content of the 1967 crop was below average and in some respects the beets were more difficult to process. You'd have to say that every plant did well under those circumstances."

Amalgamated didn't invent this contest. That honor goes to officials of the Great Western Sugar Co., who tried the idea first during World War I. It was brought to Amalgamated by Vice President R. H. Cotrell, who left GW for a job at the Lewiston plant in 1917. Cotrell, still active in company operations, believes that the competition has encouraged better performance in many areas.

1,900 tons daily. If gets extra points for exceeding that rate while Nyssa, with a capacity of 6,700 tons, would be penalized for falling below its slicing rate.

But it's not just the speed of operations that counts. The other "measures" of performance are the efficiency of the overall production effort. Use of 100 much coal or lime rock suggests inefficiency at one or more of the key stations in beet sugar processing. If the pulp has too much moisture, it means the press area's working hard enough and the pulp drier will be overworked.

The factory that does everything just right, precisely at the standards established for it, would end the year with a rating of exactly 100. To be within one point of that, in either direction, suggests a very good performance. In that sense, the 1967-68 competition was a very close one according to Amalgamated's operating superintendent, Vice President Burnell Brown.

"We saw new slicing records established and increased molasses production at almost every location this year," Brown comments. "The sugar content of the 1967 crop was below average and in some respects the beets were more difficult to process. You'd have to say that every plant did well under those circumstances."

Amalgamated didn't invent this contest. That honor goes to officials of the Great Western Sugar Co., who tried the idea first during World War I. It was brought to Amalgamated by Vice President R. H. Cotrell, who left GW for a job at the Lewiston plant in 1917. Cotrell, still active in company operations, believes that the competition has encouraged better performance in many areas.

Amalgamated didn't invent this contest. That honor goes to officials of the Great Western Sugar Co., who tried the idea first during World War I. It was brought to Amalgamated by Vice President R. H. Cotrell, who left GW for a job at the Lewiston plant in 1917. Cotrell, still active in company operations, believes that the competition has encouraged better performance in many areas.

Killed In Action

COEUR D'ALENE (AP)—The family of Army Pvt. Stephen D. Loomer, 19, Coeur d'Alene, said today it learned he was killed in action Sunday in Vietnam.

Loomer had been a member of the 101st Airborne Division. He had been in Vietnam since October 1967.

SPRINKLER HEADS

SPECIAL LOW PRICE
on all type
"RAINSIRD"
SPRINKLER HEADS

See us for quotes on:
**HAND LINES
SOLID SET
WHEEL LINES**

G. T. NEWCOMB, INC.

729 COMMERCIAL AVENUE (Across from Twin Falls Commission Company) PHONE 733-3221

Branch Office at Ketchum, Idaho

More days of weevil control even in cool weather.

This spring, when you pick 10 alfalfa stems and 3-5 of them show signs of larvae feeding, spray immediately with Alfa-tox.

It's the first line of defense against the alfalfa weevil. Even the resistant strains. For several reasons.

Alfa-tox doesn't lose its killing power after a few days. Control lasts effectively for 2-3 weeks. In dollars, this means you can pay less per day of control with Alfa-tox.

And Alfa-tox stays effective even in cool temperatures. After other insecticides have had it.

Yet Alfa-tox is easy to work with. You don't need to dress like an astronaut when you spray. Just follow label instructions and normal precautions.

Another handy Alfa-tox advantage is its short, seven-day waiting period before treatment, and cutting or grazing.

And while controlling weevils, Alfa-tox protects your crops against aphids, spittlebugs, leafhoppers, grasshoppers, and most other alfalfa insects.

So this spring, watch carefully for early damage. If it occurs, spray Alfa-tox; the weevil control you can count on days longer.

Geigy Agricultural Chemicals, Division of Geigy Chemical Corporation, Ardsley, New York 10502.

Geigy Alfa-tox

Enjoy the Advantages of Low Cost CONCRETE Head Gates

For less than the cost of two canals you can install a concrete head gate... and it will last forever!

V. NO LIFTING **18-INCH OPENING**

Easily installed with any manure loader or 3-point beam. Will handle up to 150 inches of water.

ONLY 6.50 EACH

Also available in 24 inch opening

Concrete Front End Tractor Weights 400 LBS. FOR \$40.00

ROGER VINCENT

4N 1/4 W of Asgrow Research Center (Hwy 30) Piler Phone 326-5029

THE NEW MASSEY-FERGUSONS ARE HERE!

Only the world's largest tractor maker knows how to put this much "hustle and muscle" into a lawn and garden tractor.

Nobody makes as many farm tractors as Massey-Ferguson does... and experience that means a better lawn and garden tractor for you. Look over the Massey-Ferguson model in the horizon, range-right-for-the-job you have in mind. See the many extra features. See the list of attachments available—over 30 in all. You'll find more satisfaction in owning a high-performance Massey-Ferguson. Come in and see all three. Low prices... Credit terms, too.

Twin Falls Tractor & IMPLEMENT CO.

KIMBERLY ROAD
PHONE 733-8687

TWIN FALLS FEED & ICE

OPEN 24 HOURS
7 DAYS A WEEK

135 5th Ave. South
Phone 733-1297

FOR ALL YOUR CHEMICAL NEEDS

MAGIC VALLEY GROWERS

Twin Falls 733-5671 Jeromes 324-2388

FOR ALL AGRICULTURAL CHEMICAL NEEDS

SEE

SIMPLOT SOILBUILDERS Ph. 733-4502

SEE US FIRST

HANSEN FARMER ELEVATOR

401 Main St. N 423-5241

AVAILABLE AT
HENRY'S FARM SALES
Kimberly 423-5511 Paul 438-4665

The Green Thumb

By GEORGE ABRAHAM

ATTRACTING HUMMING-BIRDS—If you want plenty of hummingbirds, grow flowers which are "red" or "orange" bell-shaped, such as cantenberry bells, delphinium, trumpet vine, columbine, honeysuckle, flowering tobacco, scarlet sage, to name a few.

It's also a good idea to use artificial foods such as sugar solution, or honey doctored with a few drops of food coloring to attract them. Honey can be fatal to hummingbirds unless diluted. So use a weak solution such as two parts honey to one part of boiled water. If you use sugar use one part to four or five parts of water, not any stronger, as it may cause liver trouble in the fatter red or cover with nail polish.

How about purple martins and bluebirds? Can you attract them around your premises? Martins are sociable birds, feeding almost entirely on flying insects. Bluebird fanciers say that a bird's nest will be equal to two bluebirds next year.

FREE: Want to know more about hummingbirds, bluebirds, martins and other birds? Write for your free booklet, stamped envelope and pack for my illustrated bulletin, Facts About Hummingbirds, Martins and other birds, your favorite birds, and it shows how to make simple houses for your feathered friends. This is a guide book on hints sent me by bird owners who need it for your green thumb library.

TREATING VEGETABLE GARDENS—We're often asked if there is a good material for treating the soil before planting seeds or young plants.

Captain makes a fine drench or you can sprinkle it on the soil after sowing seed. Mix one tablespoon of captain per gallon of water and drench the soil. For cabbage, cauliflower, broccoli and members of the cabbage family you can use Terracel (also listed as PNCB), one cup each of Terracel and captain mixed into one gallon of water. For tomatoes, peppers, eggplant, melons, use only captain as a drench.

SWEET CHERRIES—Many ask me if it is their sweet cherry trees blossom well but produce few fruits. The answer is lack of pollination. Sweet cherries are self-pollinating. Interplant a Wiegand-Napoleon and Emperor Francis are planted together, you still need another variety of cherry tree, or Black Tartarian, as the first two will not pollinate each other. Schmidt's Bigarreau is a fine seed and needs no pollination.

SOUR CHERRIES will pollinate themselves and do not need the benefit of a nearby cherry tree. Why is it that a Forsythia will blossom one year and fail the next?

Many believe this is because the birds eat the buds in winter but I doubt if this is the real cause. Some Forsythias are hardier than others. They come through the winter and produce green leaves, without producing any buds. The reason for this is, which is the hardiest Forsythia is F. ovata, earliest to bloom, but less effective. The unilike form (F. intermedia spectabilis is real showy, and so to the drooping form, suspensa. However, these quite often have their buds killed. Forsythias often bloom around the wreath of the buds only. This is because the flower buds are closer to the ground where it's warmer, and are protected by earth and snow.

Forsythias which have grown too high can be cut back immediately after flowering is over. If you want to trim your Forsythia, do it in late winter, about cut out some of the oldest branches, making the cut about three inches above the ground.

Wood Articles

Displayed At Grange Meet

Mr. and Mrs. Elmer Annis displayed a collection of articles made of native wood during the recent Grange meeting.

Mr. and Mrs. Annis told where the unique pieces of wood were found and in the process they went into their own wood projects.

A group of Shoshone Falls-Highwaymen and other woodworkers are showing the Snake River wood shown by Glenn Dossett.

The next meeting will be held at 8:30 p.m. May 11.

A.J. of Alameda: "Every year deer used to eat our corn, and even the coons got to be a problem. We solved it by using an electric light bulb in the garden."

We ran a heavy duty extension cord from the kitchen to the garden, and at the end we plugged in an electric light bulb (50 watt is large enough). Be sure to wrap each connection with plastic tape to keep out the rain. The light keeps deer and we haven't had any trouble with animals; thanks to the light bulb.

ROOTING VINES: Clematis can be raised by seed, but the easiest although many large-flowered hybrids are propagated by cuttings. In July take some clematis cuttings, cut them into pieces six inches long, place in a cold frame (avoid direct sunlight) and what you need is a cold frame (avoid direct sunlight) and what you need is a cold frame (avoid direct sunlight).

QUESTIONS THIS WEEK: S.D. of Twin Falls: "Is there anything we can use to stop the grass from growing between the bricks and stones in our walk?"

There's nothing which will permanently keep weeds as they pull them out or use a herbicide. Keep cuttings moist and humidly high, by placing a plastic over them.

CONTROL: Keep your plants sprayed with Sevin methoxychlor, or malathion. Pull up and burn any diseased plant. And try to grow your aster in a different spot at least once every three years. Be sure to pull up any sick-looking aster as soon as you see it, because once infected, they cannot be cured, and will serve as a reservoir for infection of healthy plants.

Incidentally, not enough gardeners grow calendula, also called Foxglove or Scotch Marigold, one of the easiest and most successful of all annuals. They do not make best growth in hot weather. It fall when other annuals are hit by frost. Calendulas are still producing.

Color Your Garden Bright

For gaily and bright tones color your garden with African Daisies.

The brilliance of these attractive, daisy-like flowers will brighten your garden scene—varying shades of orange, salmon, apricot, yellow, coral and white. Dark brown-black centers provide a pleasing contrast.

Individual blooms 2 1/2 inches across, are borne in profusion on a gracefully curving stem. The petals—undersides are as bright and colorful as the flower faces. Plants average 14 inches in height.

Many annuals grow as easily or serve as many diverse garden usages—as the African Daisy. Plants perform elegantly in borders, parking strips, rock gardens, window boxes, and for ground cover purposes.

A new novelty packet of African Daisies, being introduced by Germain's, Inc., this spring, provides colorful illustrations of these usages.

Indoor cut flower arrangements hold up admirably, lasting for a week or longer. Their brilliance will prove valuable for illuminating dark interiors.

For a firm summary location in plants for frost time, African Daisies seem to thrive on neglect and are especially recommended for amateur gardeners.



AFRICAN DAISIES will color your garden orange, salmon, apricot, yellow, coral and white. Plants are ideal for borders, parking strips, rock gardens, window boxes and as a ground cover.

Action Sought On Desert Land Entries As Idaho Water Board Stops In Buhl

By PAULINE DAY
Times-News Correspondent

BUHL.—The Idaho Water Resources board was asked to take prompt action on desert land entries by the Buhl Chamber of Commerce Monday evening as part of a two-day tour of southwestern Idaho reclamation projects, both operational and proposed.

A resolution seeking prompt and complete review of the Desert Land Entry law and urging the Buhl Chamber of Commerce to make a report on desert land entries and action or lack of action by the federal agencies responsible for their processing.

The Idaho Water Resources board was established in the 1955 session of the Idaho legislature after the voters in Idaho approved a constitutional amendment in 1964 establishing a board which would seek the development of Idaho water resources as well as aiding in the processing.

Implementation of plans for the development of water use. Accompanying the board to Buhl was Sen. John Bateman. Others making the tour included the president of the Idaho Reclamation Association, Canyon county commissioners, Caldwell Chamber of Commerce Monday evening as part of a two-day tour of southwestern Idaho reclamation projects, both operational and proposed.

The water resources board noted that the major items of justice when they convene in a regular session will be a report on desert land entries and action or lack of action by the federal agencies responsible for their processing.

The Idaho Water Resources board was established in the 1955 session of the Idaho legislature after the voters in Idaho approved a constitutional amendment in 1964 establishing a board which would seek the development of Idaho water resources as well as aiding in the processing.

Report Given At Murtaugh Meet

MURTAUGH.—The Poothill Lads and Lassies 4-H Club met at the Wayne Hogue home with Mark Howard, vice president, presiding and leading the 4-H pledge.

Others from the club who attended the Saturday night meeting were Club Leader and Mrs. Robert Howard, Mike Howard and Debbie Howard. Each member told about his project. New members of the club are Debbie Buerger, Timmy Morrison and Linda Morrison.

The possibility of having a speaker at each meeting was discussed.

Workshop Set

GLENNIS FERRY—Sgt. Mark Woehre will conduct a photography workshop at the state 4-H Club Congress in Moscow June 9-14.

This is the first year that photography was demonstrated at the 4-H Congress. Debbie Buerger, Mrs. Marilyn E. Jordan, Elmore County extension home economist, Sgt. Woehre has been leading the photography project in this county.

Parent-Son Banquet Held By FFA Chapter At Filer

FILER.—An award assembly and banquet was held at the FFA chapter officers climaxed the Parent-Son banquet of the FFA Chapter at Filer. Officers and Wayne Hogue served as toastmaster. Russell Hall, FFA adviser, presided at the event.

Wayne Hogue was installed as social guests and each member introduced his parents.

Glenn Ortel gave his award-winning speech "The Weed Exterminator" which has won him second place in the state speech contest and first in both district and area.

Tips Given On Control Of Dandelions

SHOSHONE.—Nearly and regular attacks on dandelions are needed to keep the common weed under control, says Ivan Hopkins, county agent.

One method is to apply fertilizer to increase plant activity. Then wait for the water and fertilizer to take hold, Hopkins says.

The period depends on weather and temperature. When lawn and dandelions are growing vigorously, apply 2, 4-D in the amine form. Use 2, 4-D at the rate of 1/2 to 1 tablespoon—enough water to cover 1,000 square feet of lawn.

Spray should be applied when air is quiet, then another waiting period of several days, with no rain, before the second spray. Many dandelions will be killed.

Apply more fertilizer and 2, 4-D about the first week in July. Do it again in August. After one season of success about the common dandelions: Seed that blows in can be controlled the following spring.

FOR FAST-SELLING RESULTS USE TIMES-NEWS WANT ADS

The Tractor With A Halo

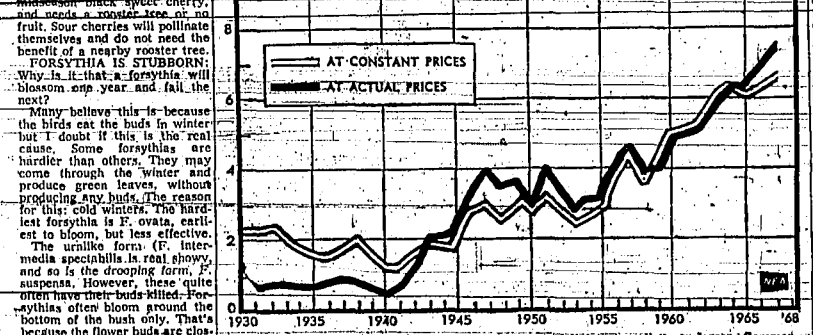
Enthusiastic reports from wand-wild users of David Brown Tractors appear for themselves. Typical are the following from the USA:

- A Vermont farmer has clocked 2,000 hours on his David Brown tractor without spending anything on repairs.
- In New York State, a farmer bought a 1959 David Brown tractor for \$1,200 after being told by a demonstration dealer it was a dud. He claims he can operate the tractor for 6 years on fuel he saved on the 1959 model in price with conventional makes.
- A farmer in Pennsylvania says he saved \$300 in fuel in just over a year by owning a 990.
- A Midwestern farmer claims that his David Brown tractor has not only cost him less to buy but the cost of operation and the cost of maintenance is so much lower than other makes that he has been really amazed.
- One Kansas farmer wrote: "In making 'how come the fuel consumption is so much less per hour on David Brown over American made tractors?"

After covering over 2,500 miles and taking more than 100,000 dollars worth of work, the David Brown tractor has not met its immediate needs where ever it has been used. It is in operating condition by many.

The David Brown Tractor is sold in Twin Falls by LESLIE DAVIS & SONS, ADS.

AGRICULTURAL EXPORTS



THE LEADING recipients of U.S. farm exports fall into two distinct classes. Commercial exchanges overwhelmingly predominate in the Western Europe and Japan. Among developing countries, government programs are the rule.

HEARING SET
WASHINGTON.—The hearing to consider regulation on filled and imitation milk under all Federal milk marketing orders will reconvene on May 21.

YOU DON'T HAVE TO SIT AND WATCH

DAIRY RATIONS

MEAL OR PELLETED

BETTER FEED FOR MORE PROFIT YIELD!

LET US KEEP YOUR FEEDER FULL OF OUR HIGH ENERGY CALF CREEP PELLETS

BABY CHICK FEED

Top Quality... Competitive prices on COMPLETE LINE OF LIVESTOCK & POULTRY FEEDS

At all mills or delivered to you

ALLISON FEED MILL

FILER 325-4315

Locally Owned and Operated

FARM SERVICE

CUSTOM APPLICATOR

- MEASURED FIELDS
- METERED QUANTITIES
- SPECIAL ATTACHMENTS

PLUS

FAST ACTING LIQUID FERTILIZERS

Get it done right... Independent Applicators don't Work for Wages.

THEY WORK FOR YOU

FARM SERVICE

KIMBERLY 83341

TOP PRODUCTION FOR SILAGE OR GRAIN

SEED CORN

SELECT A NORTHRUP KING

TOP PERFORMING FIELD CORN HYBRID

Designed for high plant populations—to give you higher yields in both grain and silage.

SEE US NOW! WE CAN SELECT A VARIETY BEST SUITED FOR YOUR FARMING NEEDS.

IDAHO GRANGE CO-OP

SHOSHONE 886-2226

GOODING 634-4821

FAIRFIELD 764-2251

Dairy Herd Report Given For Burley

BURLEY—Cassia County Dairy Herd Improvement Association reported that during the last month 23 dairy herds have been on test, including 1,180 cows, 959 cows milking and 23 dry cows. The report was made by Bruce Allred, supervisor.

Milk production total for month was 1,189,595 with 44,728 pounds of butterfat. 1,000 pounds average per cow and 27.3 pounds of fat per cow including the dry cows. About half of the cows on test produced 40 pounds or more of butterfat.

The highest cows in the Cassia County Dairy Herd Improvement Association were a grade Holstein owned by Jack Godenour which produced 3,189 pounds of milk, 127 pounds of butterfat and 4.0 test; a grade Holstein owned by Algo Petersen produced 3,490 pounds of milk, 112 pounds of butterfat, 7.5 test; a registered Holstein owned by Grant Randall and sons, produced 2,570 pounds of milk, 106 pounds of butterfat and 4.7 test.

In herds of over 75 cows highest averages including dry cows were reported by Peterson and Godenour. 80 cows, 73 milking and seven dry, average 1,213 pounds milk, 40 pounds of butterfat.

Rex Gerrard's herd, 184 registered and grade Holsteins, 147 milking, 37 dry, average 1,118 pounds of milk and 39 pounds of butterfat. The herd includes a registered Holstein which produced 69 cows, averaged 1,226 pounds of milk and 46 pounds of butterfat.

Herds less than 50 cows reported were Arvil Voyce's herd of eight registered and grade Holsteins averaged 1,201 pounds milk, and 48.4 pounds of butterfat.

Cedar Draw Grange Has Two Projects

BUHL—Mrs. Ted Hicks, Women's Activity committee chairman, reported that two new projects have been undertaken by the group when Cedar Draw grange members met at the grange hall.

The projects include making Turkish towel bibs for Harra's nursing home in Buhl and saving forage for the Idaho Equine Ranch.

Master T. R. Hicks was in charge of the business meeting. Mrs. Richard Morgan reported that rules for the "young couple of the year award" will be sent to Mrs. Bill Zinc, youth chairman.

The next meeting will be May 10. Hosts for the meeting are Mr. and Mrs. James Cobb and John Loney.

Cedar Draw Grange Has Two Projects

BUHL—Mrs. Ted Hicks, Women's Activity committee chairman, reported that two new projects have been undertaken by the group when Cedar Draw grange members met at the grange hall.

The projects include making Turkish towel bibs for Harra's nursing home in Buhl and saving forage for the Idaho Equine Ranch.

Master T. R. Hicks was in charge of the business meeting. Mrs. Richard Morgan reported that rules for the "young couple of the year award" will be sent to Mrs. Bill Zinc, youth chairman.

The next meeting will be May 10. Hosts for the meeting are Mr. and Mrs. James Cobb and John Loney.

Conservation Camp Starts On June 2

The University of Idaho Conservation Camp is scheduled for the week of June 2, at Camp Alpine near the Idaho-Wyoming border.

Boys eligible to attend this Camp-School, to study the conservation of natural resources are those who are finishing the ninth grade this spring or up through 10 years old, according to Olan Genn, Twin Falls County agent.

Costs of meals, lodging, transportation and a round-trip to camp is \$25.00. Transportation round-trip by bus is expected to be \$8 to \$9 from Twin Falls.

Applications for attending this Conservation Camp and School are available at the county agent office in Twin Falls. Reservations made for each applicant until a total of 100 boys are registered from southern and eastern Idaho. Genn says application forms are available in all county agent offices. The deadline is May 10.

KEEP AHEAD OF YOUR JOB WITH OUR ROLL-OVER HEADLAND FURROW OPENERS

KEEP AHEAD OF YOUR JOB WITH OUR ROLL-OVER HEADLAND FURROW OPENERS

KEEP AHEAD OF YOUR JOB WITH OUR ROLL-OVER HEADLAND FURROW OPENERS

KEEP AHEAD OF YOUR JOB WITH OUR ROLL-OVER HEADLAND FURROW OPENERS

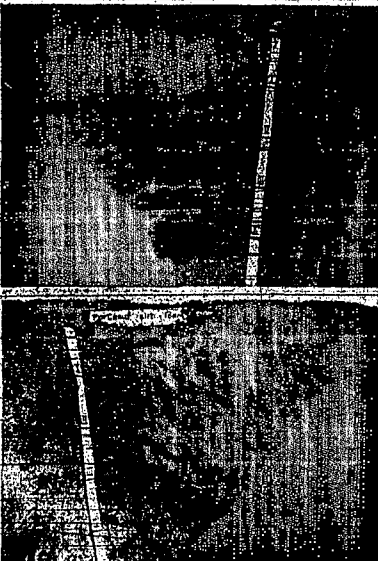
KEEP AHEAD OF YOUR JOB WITH OUR ROLL-OVER HEADLAND FURROW OPENERS

KEEP AHEAD OF YOUR JOB WITH OUR ROLL-OVER HEADLAND FURROW OPENERS

Also order your: ALFALFA CROWNERS... SLED CORRUGATORS... BALD HAY LOADERS... CULTIVATOR TOOLS... BEET and POTATO BEDS.

PAUL EQUIPMENT & WELDING SHOP

PHONE 458-4272 PAUL, IDAHO



THE ABILITY of alfalfa roots to penetrate deep in the soil to improve soil structure is shown in one of these two photos. The top photo shows an extremely compact lime layer in the Portneuf all-loam and there are no roots or moisture in this compact layer. This condition results from three years of row crop followed by one year of grain. The bottom photo shows a lime layer that is slightly separated. It is moist throughout and roots have penetrated to a depth of five feet. The soil structure is improved and the soil has been opened to allow air and moisture movement. This is the condition of the soil resulting from four years of continuous alfalfa.

Soil Structure Improved Through Growing Alfalfa

BURLEY—The use of alfalfa in crop rotations is nothing new. Its value in supplying nitrogen and other nutrients is well known by most farmers but ability of alfalfa roots to penetrate deep in the soil and improve soil structure is less well known, states Olen H. Logan, Soil Conservation Service Specialist here.

The importance of this needs to be stressed, particularly in application to soils of southern Idaho, Mr. Logan said.

The soils of southern Idaho generally will have a lime layer similar to the one photo illustrated by the Portneuf silt loam soil. Row crops and grain will have the same effect on most of these soils, that of destroying a soil structure, reducing organic material and increasing soil compaction.

Including alfalfa or alfalfa-grass mixtures in the rotation for a two to three year period following no more than three years of row crop or grain will help maintain soil structure, increase productivity and keep the soil open for air and water movement. Logan stated.

Data Given On Treating Seed

BURLEY—There is an element of risk when treating potato seed with combinations of gypsum and lime with fungicide, states Gene Rinebold, potato specialist for Cassia, Twin-Falls and Minidoka Counties.

Rinebold cautioned farmers who are treating potato seed to be sure the seed is treated correctly, do not treat at all, Rinebold stated.

If seed treatment is necessary, Captain, Phygion and Semesan Bel are effective. Streptomycin may be added to kill, increase productivity and enhance the bacterial killing properties of Captain and Phygion.

Equine Influenza, Common Horse Malady Is Dangerous If Not Treated

RENO—Equine influenza or "horse flu" is a highly contagious, rather common malady of horses in Nevada that occurs at any time of year and that can be dangerous to the animals if not treated properly.

"The disease," says Earl J. Drake, DVM, DABVP, is a respiratory disease, common in all ages of horses. It is caused by a virus and is spread by direct contact with infected horses, sneezing, coughing, and by contact with contaminated objects.

Dr. Drake prescribes some measures to be taken that will help ward off complications. The horse should be isolated or worked, he said, but needs complete rest. In addition, antibiotics may be administered to guard against secondary bacterial infections. Every effort should be made to see that the horse gets plenty of water and proper nutrition. In the event that the horse develops a diarrhea, it should be given fluids and electrolytes intravenously. Additionally, the animal should be kept in a dry, clean and protected area, and if possible, separated from other horses.

"Equine influenza," Dr. Drake further explained, "is sometimes confused with strangles or distemper, arteritis, and virus abortion or rhinopneumonitis. There are some common symptoms, but will distinguish you get swelling of the glands, with arteritis, pink eye lesions, and with the latter, abortion and digestive problems."

Mothers Day Tea Planned By Club

HANSEN—A Mother's Day tea was planned for May 11, by the members of the Galamie Clippers 4-H Club at a meeting at the home of a leader, Mrs. Eldred Bodily.

The Junior Jiffies division discussed projects which will be the color that best suits each girl for material for skirts to be made and hair care. The Machine Magics also discussed some plans.

Mrs. Sam Huck gave an outline of how the officers' reports should be filled out. The girls will discuss science (fabrics) and learn about them. The next meeting will be May 8, at the home of Mrs. Huck.

DEMONSTRATOR SPECIAL!

FARMAL 806 DIESEL

15-5-38 Rear tires, wide front axle, torque amp-lifier, 3 point hitch, independent take-off, extra hydraulic valves, remote control.

FULL ONE YEAR WARRANTY \$6,950

BUHL IMPLEMENT CO.

Buhl

Phone 543-4343

Highliners 4-H Club Has Election

Officers of the Highliners 4-H Club were named recently. They are: Susan Billington, president; Pete Turner, vice-president; Deena Kinsey, secretary; Val Kinsey, treasurer; and Linda Crano as assistant leaders.

DEKALB the HI-ENERGY SILAGE

HIGH IN GRAIN
HIGH IN TONNAGE
HIGH IN ENERGY

DeKalb has silage varieties bred to fit your needs—shorter hybrids for high grain content, or taller, later maturing hybrids bred to give maximum tonnage. Ask your DeKalb Dealer for specific variety recommendations.

"DEKALB" is a Registered Brand Name.

E. L. ALLRED, SR.	Castleford
C. L. HARRIS	Glenns Ferry
ED SCHUTTE	Gooding
RAY MCCORD	Wendell
UNITED CO-OP	Rupert
TWIN FALLS FEED & ICE	Twin Falls

To Serve You Better

WITH:

- EFFICIENT SERVICE
- QUALITY PRODUCTS
- MODERN EQUIPMENT
- TECHNICAL KNOW-HOW
- FRIENDLY PERSONNEL
- RIGHT PRICES




Jack Pierce
Buhl - Filer - Hazelton - Milner - Arces

Mac D. Kump
Twin Falls - Kimberly - Jerome - Arces

Contact your nearest warehouse manager, or your area fieldman, for the complete job in Fertilizers and/or chemicals, or Call 733-7132, the Twin Falls Warehouse, and ask for our Fertilizer and chemical supervisor.



DRY FERTILIZERS

CUSTOM MIXING AND APPLYING of any combination of dry fertilizer... Including trace elements. Pull type or late bins available.

"BARBER" OR SPINNER TYPE CUSTOM TRUCK SPREADING.

LIQUID FERTILIZERS

8-24-0 AQUA URAN

Custom applied with modern, metered equipment... side dress or open field injection.

CHEMICALS

EPTAM TILLAM TREFLAN
DI-SYSTON RO-NEET and Others

Custom application or incorporation available.

B G BEAN GROWERS WAREHOUSE, ASSN.

BUHL - FILER - TWIN FALLS - KIMBERLY - HAZELTON - MILNER