

Times News

Idaho's Largest Evening Newspaper

68th year, 272th issue

TWIN FALLS, IDAHO, WEDNESDAY, FEBRUARY 23, 1972

10¢



Wading through

WINTER MADE a sloppy but acceple return to Twin Falls with an early morning snowstorm today. The snow draped trees in white and left streets and walks slick. Here two Vera C. O'Leary Junior High School students trudge through the storm to morning classes.

Chou hints door open for American newsmen

PEKING (UPI)—In President Nixon's presence, a smiling Premier Chou En-lai dropped an intriguing but vague hint today that American newsmen—who were sent packing in 1949—may be welcome to remain in China after Nixon departs.

Chou dropped the ambiguously worded invitation at the start of his third working session with Nixon, this one held in the President's luxurious lakeside guest house that has been dubbed "the Peking White House." It was snowing when Chou arrived the first four weather since Nixon came Monday.

Both parties appeared in high spirits and satisfied with the progress of their dialogue. The

Americans took it as a good omen that Nixon for a second day received extraordinary coverage in the government-controlled press.

Four photographs of the American leader and his delegation were published in today's edition of the "People's Daily," along with reporting which was straightforward and factual without propaganda or embroidery.

Bantering with newsmen as he posed for pictures with Nixon, Chou dropped his vague hint.

"If the press wants to see any more places," he said, "they can apply to the Ministry of Information." An official of the ministry said applications

were "being considered."

Chou left unclear whether he meant that reporters could see "more places" for the five days remaining in Nixon's visit, or whether they could extend their stay.

A few American newsmen have been admitted on a temporary basis in the aftermath of the thaw which developed when a U.S. ping pong team toured—China, helping open the mainland to Nixon.

One of the photographs which appeared in today's paper showed Nixon and Chiang Ching, among others. She is the wife of party Chairman Mao Tse-tung. The picture was taken at the Peking Opera

Tuesday night.

Chou drove to Nixon's buff-colored lodging precisely at the appointed hour—2 p.m. Nixon met him at the door with a smile and a handshake for talks which the President hopes will lead to an all-Asian conference to find a political settlement to the wars of Laos, Cambodia and Vietnam.

After two hours, the talks recessed briefly for tea; then resumed.

Nixon asked Chou if the snow—the first foul weather since his arrival Monday—would wipe out a visit Thursday to the Great Wall of China, built centuries ago in an unsuccessful effort to keep out foreign invaders.

Living costs climb

WASHINGTON (UPI)—Americans' cost of living rose 0.3 per cent in January, with such things as meats and new cars costing more, the Labor Department reported today.

The department said consumers also paid more last month than in December for some services, while prices dropped for fresh vegetables, clothing, used cars and gasoline.

The January increase in the Consumer Price Index, covering a wide range of costs of products and services like medical treatment, compared with a 0.4 per cent rise in December—steepest rise in six months.

Administration economists had warned of a "price bulge" in the first few months following the end of the wage-price freeze as the economic controls program became more flexible. The 90-day wage-price freeze ended Nov. 14.

Without adjustments for seasonal variations, the January cost of living rise was 0.1 per cent, down from 0.4 per cent in December.

Compared with prices in 1967, the January increases pushed the consumer index to 123.2, 3.4 per cent above a year ago. That meant the same retail items and services that cost \$10 in 1967 would now cost \$12.32.

Food prices covered by three months of economic controls President Nixon ordered on Aug. 15 rose substantially in January while fresh vegetables and eggs, which were exempt from regulation, were down sharply.

Meat prices rose considerably, verifying complaints of many consumers who have protested recently about soaring beef and pork costs.

Prices of dairy products, fresh fruits and processed fruits and vegetables were also up for the month and the Labor Department said restaurant meals and snacks were 0.2 per cent higher in January than in

December.

New car prices which usually decline in January were up 1.6 per cent, reflecting increases approved by the Federal Price Commission.

Prices for non-food commodities such as clothing, gasoline, and some luxuries declined 0.3 per cent, less than normal for January. Used cars were down 1.8 per cent.

Service prices were up, however, with over half the monthly increase due to higher property taxes and auto registration fees both of which are exempt from price control. Local transit fares were also up.

Gem potato bills scored

BOISE (UPI)—Two Senate bills aimed at controlling and promoting the state's number one product, the potato, were disputed Tuesday by spokesmen for leading potato organizations.

An overflow crowd of producers, shippers and processors involved in the potato industry testified before a joint hearing of the Senate and House Agricultural Affairs Committees.

Proposals to manage the supply of the state's production of potatoes through establishment of a special seven-man board and to raise the advertising tax from two cents to a possible five cents per hundredweight on a flat rate basis were under consideration.

The vice president of the National Potato Council and a past president of the Potato Growers of Idaho, Inc., Clarence Parr, termed the supply management bill "simply a backdoor method of acreage control imposed on a regional basis" that is not in the best interest of the Idaho potato industry.

He said discouragement of over-production by a graduated assessment method contains "obvious inequities" whereby those who produce 75 per cent of the potatoes would pay only 67 per cent of the total tax collected by the board.

However, the state president of the national farmers organization, Marden Wells of Roberts, urged passage of the bill, saying it was time for growers to "take the offensive." He said the potato industry "has been dominated by shippers and processors for the past 20 years."

He added the supply management program would help reverse the trend in rising production costs but declining price returns to the grower.



Shearer

Retired banker, 87, dies

TWIN FALLS—Guy H. Shearer, 87, Twin Falls, former president and chairman of the board of the Fidelity National Bank, died Tuesday evening at his home.

Born and educated in Illinois, Mr. Shearer came to the Magic Valley in 1911. Shortly after arriving in Filer, he became the chief executive officer of the Filer State Bank, which later became the Fidelity National Bank. He continued in that office until 1955, when he became chairman of the board. Mr. Shearer retired as chairman of the board in 1970, when the bank merged with Idaho First National Bank.

Mr. Shearer was instrumental in moving the bank's main office from Filer to Twin Falls in 1935.

He was active in public affairs in Filer and Twin Falls, and was instrumental in organizing the Twin Falls County Fair. Mr. Shearer was one of the first men to be honored by the Magic Valley Livestock Hall of Fame.

Funeral services will be conducted at 11 a.m. Saturday at the Twin Falls First Church. White Mortuary is in charge of arrangements. (Obituary, P. 2)

Gasoline lead cut proposed

WASHINGTON (UPI)—The government Tuesday proposed tight restrictions on lead content of gasoline in a move to protect public health by sharply reducing air pollution caused by automobile exhaust.

Because lead ruins the catalytic exhaust cleanup devices planned for 1975 model cars, the regulations would require most service stations to offer lead-free gasoline by mid-1974 and to ensure under threat of \$10,000 a day fine that no leaded gas is pumped into cars equipped with catalysts.

To protect the public from lead poisoning caused, partially by car exhaust, the proposed rules also would require that higher octane gasolines for older cars gradually reduce their lead content, starting Jan. 1, 1974, and climaxing Jan. 1, 1977.

The Lead Industries Association issued a statement criticizing the Environmental Protection Agency (EPA) proposals on grounds they were "not based on solid scientific data."

Indiana recount ordered

WASHINGTON (UPI)—The Supreme Court overruled a lower court today and declared that the 1970 re-election of Sen. Vance Hartke, D-Ind., is subject to a state recount.

Hartke was declared winner of the contest by a margin of 4,283 out of more than 1.7 million ballots. The losing Republican candidate, former Rep. Richard L. Roudebush, filed recount petitions in 11 counties and recount commissions were appointed for a number of precincts.

But Hartke won a ruling on Dec. 17, 1970, by a special three-judge federal panel in Indianapolis stopping the recount. The panel held the state recount law was unconstitutional and had been repudiated three times by the Indiana supreme court.

That decision was reversed today in an opinion written by Justice Potter Stewart.

Stewart's opinion upheld the constitutionality of state recounts of congressional elections.

Both Roudebush and Indiana Attorney General Theodore L. Sendak had appealed. Hartke was sworn in and seated on Jan. 21, 1971.

Vietnam peace talks resume

PARIS (UPI)—The U.S. and South Vietnamese delegations today accepted a Communist proposal to hold the 145th Vietnam peace talks session Thursday.

The allied negotiators two weeks ago suspended the peace conference to protest the Feb. 11-13 world assembly for peace and independence of Indochina, a left-wing rally called in suburban Versailles to denounce U.S. policies.

Senate passes anti-bias bill

WASHINGTON (UPI)—After stopping a five-week filibuster on the third attempt, the Senate Tuesday approved new government powers to combat job discrimination.

After failing Feb. 1 and Feb. 8, the Senate voted 73 to 21 to invoke debate-ending cloture—10 more votes than the required two-thirds majority.

Then, after a compromise between Southern leaders of the filibuster and Senate Democratic Leader Mike Mansfield, the Senate approved 73 to 18 and sent to the House a bill to grant the Equal Employment Opportunity Commission (EEOC) the right to sue in federal court for the enforcement of a law requiring the elimination of race and sex discrimination in hiring and promotion.

to 10.1 million state and local government employees and to cover employers and unions with 15 or more workers, rather than the present 25.

After the vote to stop the filibuster, passage of the measure was threatened by new delays when Sens. James B. Allen, D-Ala., and Sam J. Ervin Jr., D-N.C., said they would fight a routine motion to substitute the Senate bill for a House measure approved earlier.

Traditionally, the Senate simply substitutes its own bill for language sent to it by the House, thus enabling a disputed measure to go directly to a conference committee.

Luna 20 returns capsule

MOSCOW (UPI)—The unmanned Luna-20 moon probe today rocketed back toward earth a capsule with samples of rock from the Apollonius Mountain region; the Tass news agency said.

Luna-20 landed Monday in the region, believed by geologists to harbor some of the moon's oldest soil.

Tass said it bored "out" rock samples and placed them in a sealed container which "was then launched toward earth."

"Today a space rocket was fired from the station's landing craft on the way (back) to earth," Tass said. "The recoverable apparatus contains samples of rock taken in a difficult access area of the lunar continent."

Red attack wounds 4

SAIGON (UPI)—Communist mortars wounded four Americans at the Qui Nhon support command compound late Tuesday and two other Americans were injured in separate incidents in other areas of South Vietnam.

In the air war, U.S. officials reported six "protective reaction" strikes against Communist antiaircraft positions in North Vietnam in the last two days but the results of the raids were not known.



Mr. Nixon is a happy communist

Forecast

SHOWERS

Details, P. 8

WHEELS SOLD!!

Mr. John Bohr of Twin Falls is a believer in Times News Classified Advertising. Well-financed first man, who called took the car, he said. Quoted Classified Advertising can't be beat. It got a on the plan, deal 734-9921, or visit the Classified 132.

Mr. T-N says

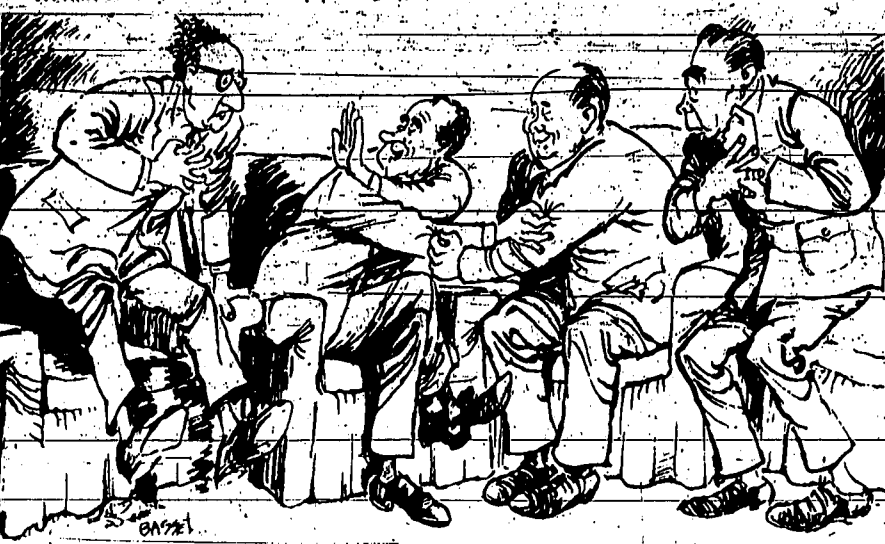
The past week was such a nice respite from new some people about longer law to drive in the while still in

Look inside

Paul hikes budget — P. 13

Editorial 1
Facts 9
Markets 8
Sports 10
Valley View 10

Relax, Henry... we're only punching each other to make sure it's not a dream



Soviets suspicious of Sino-U.S. moves

LONDON (UPI)—The meeting between President Nixon and Chairman Mao Tse-tung apparently has heightened Soviet suspicions of a Sino-American move toward a joint anti-Soviet policy, diplomatic reports from Moscow said Tuesday.

Soviet policy makers have been shaken by the first part of President Nixon's Peking talks and are preparing a broad anti-China campaign, the reports said.

The outcome of the Peking summit meeting will influence the scheduled meeting between Soviet leaders and President Nixon in Moscow next May. Communist diplomats have begun to warn of the possibility of cancellation of the Moscow visit.

Short of outright failure of the Peking talks between Nixon and the Chinese leadership, it will be hard to convince the Kremlin that the whole exercise is not to prove unfavorable and even dangerous to Russian diplomatic reports said.

The Russian public has been told virtually nothing about the details of the Peking developments but every move is being followed closely by Moscow leaders.

As Soviet and East European diplomats are practically isolated in Peking, Moscow is relying largely on Western reports of the President's activities, and so far what they have seen and heard is not to their liking, sources said.

Moscow was said to be mounting a frantic double-barreled campaign, designed to create a wide anti-China front and to undermine the Mao regime inside China at the same time, reports said.

Eastern European Communist countries have reportedly been told to root out any signs of sympathy with the Mao regime in their countries. Mao is being painted as the arch-enemy of Communism who has turned against the world Communist camp.

Poland's party chief Edward Giersek, a relatively mild representative of the camp, appealed—evidently on Moscow's instructions—over the head of the Peking regime to the Chinese people to reject Mao and his policies and return to the real line of world Communism—as represented by Moscow.

Seen...

Bob Kroush almost getting run over as he drives into courthouse parking lot. Clifton Sharp and Buck Wilson explaining reason for new police department restrictions on news media. Golden Bennett with something new growing on his chin. Judge Charles Shaw, Gooding, walking through judicial buildings in Twin Falls in judicial robe. Mike Gray calling home to report the City Council meeting lasted longer than he anticipated. Winston Jones and Merl Leonard discussing garbage. William Chancey, wondering if Miss Idaho is going to present him with roses. Don Cooper, Boise, talking with county officials at airport. Large Airwest plane and smaller Trans Magic Airlines plane sitting on airport apron at same time. Tiny Kimball back to the snow shoveling routine after wondering about lawn mowing the past few days. Members of Thurston Pence Post VFW taking down flag. Several automobiles off the road along new section of Buhl to Twin Falls highway. Overheard, "Now what do you have to say about those lilac buds?"

First Lady observes acupuncture treatment

PEKING (UPI)—When Pat Nixon walked into a farm commune clinic today, she saw an elderly Chinese woman undergoing the ancient medical treatment of acupuncture with nine silver and gold needles

stuck in her shoulder, her arm and her leg.

The sight of the gaunt 60-year-old farm woman receiving the ministrations apparently embarrassed the First Lady, and she turned away.

"I think it is rude to watch," Mrs. Nixon said.

But she was encouraged by her hosts on her first tour of a Chinese agriculture commune to stay, and the patient appeared to enjoy the attention, nodding and smiling and saying "hello" in Chinese. The woman answered "yes" when asked if she had heard of Mrs. Nixon.

Mrs. Nixon strolled through a light snow down dirt roads on a 90-minute tour of the 6,000-acre Evergreen Peoples Commune near Peking. Her hosts had difficulty keeping up with her break-pick.

"I love to walk in the snow," she said.

She heard racy-cheeked, pigtailed school children sing the praises of Chairman Mao Tse-tung and was told the success of the 41,000 commune members in growing vegetables, wheat and rice was due to the guidance of the "revolutionary line" of Mao.

Zoos vie for pandas

By United Press International

The first official trade in 25 years between the United States government and the government of China—the exchange of two shaggy, tusked musk oxen for a pair of giant pandas—has excited American zoo directors but put them at odds with each other.

Since the last of nine giant pandas kept in captivity in the United States died in the Brookfield Zoo near Chicago in 1952, American zoos have tried vainly to get the bear-like mammals. Their white bodies,

black limbs, ears and eyes and playful antics have made them great favorites with zoo-goers.

When he left for Peking, President Nixon took with him a promise that Milton and Matilda, two musk oxen, would be presented to the Chinese people.

TF Scouts observe founding

Winners listed

TWIN FALLS — The Monday afternoon Duplicate Bridge Club met at the Episcopal Auditorium.

North and south winners were Mrs. Marie Spangler and Mrs. Roy Hill, first; Evelyn Tucker and Mrs. W. P. Haney, second, and Mrs. R. R. Williams and Mrs. H. M. Wycoff, third.

East and west winners were Mrs. B. E. Standlee and Mrs. A. V. Williams, first; L. E. Kale and Mrs. H. D. Fitzpatrick, second, and Mrs. Edward Laats and Mrs. Dudley Driscoll, third.

TWIN FALLS — About 100 persons clustered around the city park band shell Tuesday evening in observance of the Girl Scout "Thinking Day."

Members of Twin Falls Girl Scout units representing Brownies, Juniors and Cadettes, presented a program of songs, dances and readings marking the anniversaries of the birth of Britons Lord and Lady Baden-Powell, who were instrumental in founding the Girl Scout movement.

Most of the assembly was made up of families of Girl Scouts participating in the program.

Repeal passed

WASHINGTON (UPI)—The House has passed and sent to the Senate legislation to repeal a set of 18th Century laws making it illegal to traffic in Chinese coolies.

Lawmakers said the move was strictly coincidental and in no way related to President Nixon's being in China.

Magic Valley Obituaries

Guy Shearer Lee Watson D. Albertson Funeral Services

Guy Shearer

TWIN FALLS — Guy H. Shearer, 87, retired chairman of the board and president of Fidelity National Bank, died Tuesday evening at home in Twin Falls.

Funeral services for Mr. Shearer will be conducted at 11 a.m. Saturday at the First Presbyterian Church, with the Rev. Robert VanNest officiating. Burial will be in Sunset Memorial Park.

Born at Cullum, Ill., on Jan. 25, 1885, he was educated in Illinois schools and graduated from the Chicago Law School. He was admitted to the Illinois bar in 1910 and to the Idaho bar in 1912. After finishing college, he was credit manager for the Chockering Piano Co. in Chicago and practiced law there until 1911.

Mr. Shearer came to Filer from Chicago in August, 1911. In October, 1911, he became chief executive officer of the Filer State Bank, which later became the First National Bank of Filer and subsequently Fidelity National Bank. Mr. Shearer served as president of the Fidelity National Bank until 1965, when he became chairman of the board. He served as chairman of the board until 1970, when the bank merged with the Idaho First National Bank.

In 1935, the bank's main office was moved to Twin Falls, with the Filer bank serving as a branch.

Mr. Shearer was a past president of the Idaho Bankers' Association, a member of the executive council of the American Bankers Association and a past state vice president of the American Bankers Association.

He served as a chairman of the Filer Village Board of Trustees, helped organize the Filer Rural High School District, was a trustee of the Filer Independent School District, served as president of the Filer Rural Telephone Co., as chairman of the Twin Falls Chapter, American Red Cross, as a member of the Twin Falls Community Chest Board, and was active in organization of the Camp Fire Girls in Twin Falls.

Mr. Shearer also helped organize the Filer Highway District and the Twin Falls County Fair.

Mr. Shearer served as president of the Filer Kiwanis Club, was a member and past director of the Twin Falls Rotary Club and the Twin Falls Chamber of Commerce.

He was a member of the Filer Masonic Lodge for 50 years and was also a member of all Masonic bodies in Idaho, including 50 year membership in El Korah Shrine, Temple, where he is a life member of the Twin Falls Elks Lodge, a charter member of Blue Lakes Country Club, and an alumnus member of Webster Chapter, Phi Alpha Delta Law Fraternity.

Mr. Shearer was a member of the First Presbyterian Church. Mr. Shearer was one of the first men to be honored by the Magic Valley Livestock Hall of Fame.

He was married to Axela E. Boling at Port Washington, Wis., on Sept. 21, 1912.

Surviving are his wife; a daughter, Mrs. James S. (Mary Jane) Kinney, Twin Falls, and two grandchildren, Elva and a son, who preceded him.

The family suggests memorials be made to the Twin Falls County Women's Club.

Lee Watson

BUHL — Lee Ondes Watson, Buhl, died Tuesday morning at Magic Valley Memorial Hospital after a brief illness.

He was born in Murphy, N.C., and came to Twin Falls in 1917 where he was the first man to enlist for duty in World War I. After serving in the signal battalion of the U. S. Marine Corps he returned to Buhl to live. He had resided on his farm south of Buhl for 38 years.

He was married to Sarah Lillian Fisher on May 11, 1929, at Gooding. He was a member of the Buhl First Baptist Church.

In addition to his widow, he is survived by five sons, Dudley Lee Watson, Castleford, De Wayne Watson, Roseville, Calif.; Donald Gary Watson, Twin Falls; David Rollo Watson, Bountiful, Utah, and Danny Frazier Watson, Bellevue; three sisters, Mrs. Lena Clark and Mrs. Clothe Young, both Buhl, and Mrs. Beulah Wagner, Twin Falls, and 17 grandchildren.

Funeral services will be conducted at 2 p.m. Friday at the Buhl First Baptist Church by Rev. Floyd Austin. Friends may call at the Albertson-Dickard Funeral Chapel Thursday until 8 p.m. and Friday until noon. Concluding rites will be at the Buhl Cemetery.

D. Albertson

HAZELTON — Dean Albertson, 53, retired Hazelton farmer, died Tuesday afternoon of a heart attack at the home of a son in Twin Falls.

He was born at Jackson, Idaho, on July 5, 1918. He had been a resident of Hazelton for 20 years.

He married Edith O'Donnell on July 24, 1942, at Wendell.

Surviving besides his wife are four sons, Gary Albertson, Eden; Larry Albertson, Kimberly; Danny Albertson, Twin Falls, and Kenneth Albertson, U. S. Navy, San Diego, Calif.; one daughter, Nadine Albertson, Hazelton; four brothers, Tom Albertson, Burley, Jack Albertson, Salt Lake City, Utah; Warren Albertson, Pocatello, and Arnold Albertson, Gooding; three sisters, Mrs. Robert (Edna) Ellis, Twin Falls; Mrs. June Haycock, Rexburg, and Mrs. Lorene Howard, Pocatello; and six grandchildren.

Funeral services for Mr. Albertson will be held at 2 p.m. Friday at White Mortuary Chapel. Burial will be in the Hazelton Cemetery. Friends may call at the mortuary until 1:30 p.m. Friday.

Funeral Services

KETCHUM — Graveside services for Roland Henry Smith will be held at 2 p.m. Thursday at the Ketchum Cemetery under the direction of Bird Funeral Home, Hailey.

HAILEY — Services for Otto Willis Carlton will be held at 2 p.m. Friday at the Gooding First Christian Church. Final rites will be in Elmwood Cemetery.

BURLEY — Graveside services for Gordon Dale Sorenson will be held at 1 p.m. Saturday at Riverside Cemetery, Heyburn, under the direction of Payne Mortuary.

BURLEY — Graveside services for Ira LeRoy Poulton will be held at 11 a.m. Saturday at Pleasant View Cemetery under the direction of McCulloch Funeral Home.

Now you know

By United Press International

Anson Burlingame, appointed U.S. minister to China, by President Lincoln, impressed the Chinese so much that, after he resigned as minister in 1867, he was named by the imperial government as envoy in charge of China's international relations.

WANT TO PUT MONEY IN THE BANK? Sell on longer than 30 days. Spelling goods with Want Ads. Dial 733-0931.

WARBERG'S
MOVING & STORAGE

ALLIED VAN LINES
CALL YOUR LOCAL AGENT, 733-7371

We don't move furniture.

We move families

Magic Valley Hospitals

<p>Mitidoka Memorial</p> <p>Admitted: George Zimmerman, Robin J. Reed, George Pierce and Dana Anley, all Rupert.</p> <p>Dismissed: Roland Taylor, Diana Anley, both Rupert, and Virgil Valdez, Jerome.</p> <p>Blaine County</p> <p>Admitted: Scott Logan, Hailey; Milton Baine, Carey.</p> <p>Births: A son was born to Mr. and Mrs. Robert Wallace, Bellevue.</p> <p>SUBSCRIPTION RATES</p> <p>THE TIMES-NEWS</p> <p>Twin Falls, Idaho</p> <p>By Carrier: Per Month \$2.50 (Daily & Sunday)</p> <p>By Mail: Paid in Advance (Daily & Sunday)</p> <p>1 Month \$2.75</p> <p>3 Months \$7.75</p> <p>6 Months \$12.50</p> <p>1 Year \$22.00</p> <p>All subscriptions accepted only where carrier delivery is not maintained.</p> <p>TIMES-NEWS SUBSCRIBERS</p> <p>for service on Paper Delivery</p> <p>Call your carrier or 733-0931</p> <p>Before 8 p.m. daily or before 10 a.m. on Sundays</p> <p>PHONE 733-0931</p> <p>Chester, 1011-1000 numbers</p> <p>Buhl, Castleford, Burley, Rupert, 643-4640</p> <p>Gooding, Heyburn, 643-4640</p> <p>Wendell, Jerome, Gooding, Heyburn, 643-4640</p>	<p>Magic Valley Memorial</p> <p>Admitted: Mrs. Jack Henderson, Frank Herzinger and Mrs. Nyle Winn, all Buhl; Ozia Brower, Owen Buchanan, Lyle Abel, Margaret Anderson, Mrs. Paul DeWitt, Aaron Vecera, Mrs. R. P. Parry, Mrs. Frances Horjes, A. Steven Thompson and Mrs. Harvey Meunier, all Twin Falls; Jana Lee Corn, Burley; Daryl Wolfe and Mrs. Don Albin, both Filer; Mrs. Calvin Jones, Hazelton, and Bruce Lohmes, Eden.</p> <p>Dismissed: Paula Kay Pierce and Mrs. Helen Hayslett, both Filer; Loren Cress, Mrs. Harold Carlton, Herman Kay, Mrs. Rollan Kidwell, Mrs. James Neaderhiser, John Stephens, William Durham and Judith Maf, all Twin Falls; Marion Tanner, Hansen; Mrs. Frank Veenstra, Wendell; James Bourn, Murtough; Mrs. Bill Lee and son, Buhl, and Lorna Moor, Burley.</p> <p>Births: Daughters were born to Mr. and Mrs. Dan Kinsey and Mr. and Mrs. Paul DeWitt, all Twin Falls, and to Mr. and Mrs. Calvin Jones, Hazelton. A son was born to Mr. and Mrs. Don Mitten, Filer, and to Mr. and Mrs. Nyle Winn, Buhl.</p> <p>Gooding County</p> <p>Admitted: Sherry Goldy, Mrs. Henry Thompson, Daphne Hill, and George Moore, all Gooding.</p> <p>Dismissed: Mrs. Joe Rice and Nancy Kelly, both Gooding, and Bryan Kelso, Buhl.</p>	<p>Cassia Memorial</p> <p>Admitted: Manuel Mara, Mrs. E. Wayne Rogers, Lillian Heckendorn, Mrs. John Gerhardt, all Burley; Mrs. John M. Mabey, Oakley; Mrs. Albert Heinze, Paul; William Levins, Prineville, Ore.</p> <p>Dismissed: Mrs. Gordon Lynes, Frank Chambers, Mrs. James Feeney and son, Eddie Curiel, all Burley; Mrs. A. I. Thurston, Paul.</p> <p>Births: Sons were born to Mr. and Mrs. Gilbert Hunter, Oakley, and Mr. and Mrs. Delbert Hutchison, Malta.</p> <p>St. Benedicts</p> <p>Admitted: Mrs. Yolanda Dayap, Jeff Foster, both Jerome; Mrs. S. Johnson, Wendell.</p> <p>Dismissed: Angela Kulhanek and Mrs. Victor Darling, both Jerome, and Lynette Lalliss, Shoshone.</p> <p>Sun Valley Hospital</p> <p>Patients list not released to hospital/officials.</p> <p>Valley Briefs</p> <p>TWIN FALLS — Magic Valley Memorial Hospital Auxiliary will hold an orientation meeting at 1:30 p.m. Thursday in the hospital lobby. This meeting will be held for all interested in becoming Pink Ladies.</p> <p>Twin Falls County Women's Club in death of the family suggests memorials be made to the Twin Falls County Women's Club.</p>
--	--	---

Loser named

HANSEN — Terry Christianson was named best loser when Chapter No. 84 TOPS met Monday evening at the home of Mrs. Thomas Giesel Smith.

Mrs. Paul Bowman presided in the absence of the president. Mrs. Fred Howard won the "quickie" contest and members voted to have the same contest this week.

A penalty for gainers was a five-minute daily exercise. Mrs. Freida Nicholson, Stanley, was a guest. Diet hints were exchanged.

Falls Public Library Book Fund Friends may call at White Mortuary Thursday and Friday.

Winners listed

TWIN FALLS — The Twin Falls Duplicate Bridge Club met Monday evening.

Winners were Mrs. A. J. Landemer and Mrs. Lewis Hack, first; Mrs. D. Ranson and Lewis Hack, second.

The next meeting will be at 7 p.m. Monday at the Episcopal Auditorium. A special party is planned.

In addition to all the funeral arrangements, we offer our services in handling such details as arranging for cemetery or mausoleum space, cremation, flowers, clothing, cross-country transportation, notices to friends and relatives, newspaper releases, recording vital statistics, securing death certificate, assisting with insurance and government claims, providing visitors' record book and other items the family may request.

Ozia Brower

TWIN FALLS — Mrs. Ozia M. Brower, 80, Twin Falls, died Tuesday evening at Magic Valley Memorial Hospital.

Funeral arrangements are pending at White Mortuary.

E. Wortman

TWIN FALLS — Edgar Wortman, 75, Twin Falls, died this morning at Magic Valley Memorial Hospital.

Services will be announced by Twin Falls Mortuary.

DETAILS, DETAILS

Leave them to us

Although limited space prohibits our listing all of our services, there may be other ways of serving Twin Falls area families we haven't thought of. We welcome your suggestions.

WHITE Mortuary

"The Chapel by the Park"

136 4th AVE. EAST - TWIN FALLS

PHONE 733-6600

SHOWS NATIONAL SELECTED MORTUARIANS

CONGRATULATIONS!

To Idah-Best Inc. On their New Facilities South East of Twin Falls

FENWICK ELECTRIC

454 Jefferson

Phone 733-3766

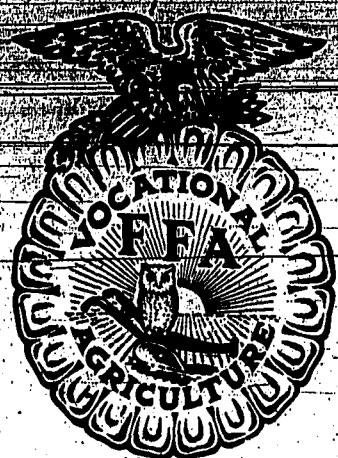
We Were Happy To Have Done The Wiring For The New Plant

FFA WEEK

FEBRUARY 19-26



Youth With A Purpose Their Goals Are Set



Let's all join to congratulate Twin Falls County FFA members for their outstanding achievements. Our local youth once again demonstrates that successful farming begins with vocational preparation.

LEARNING TO DO . . .

Every F.F.A. chapter is taught how to demonstrate rural and community leadership.

DOING TO LEARN . . .

F.F.A. members not only learn farming methods, but apply them to projects.

EARNING TO LIVE . . .

With F.F.A. training, a young man learns how to earn a better living for his family.

LIVING TO SERVE . . .

F.F.A. members participate in worthy cooperative efforts to improve agriculture.

*This Public Service Page
Is Sponsored By*



BUHL CHAPTER — Mr. Ken Gunnarson, Instructor



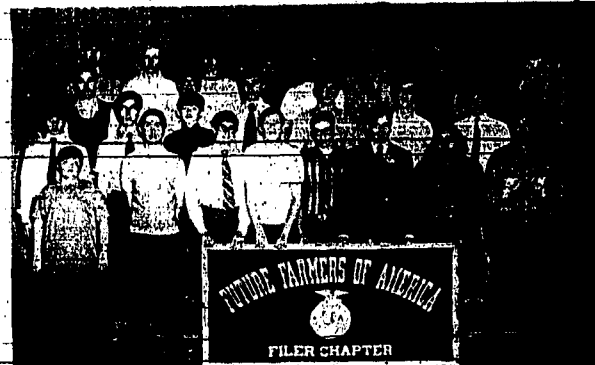
TWIN FALLS CHAPTER — Mr. William R. McHargue, Instructor



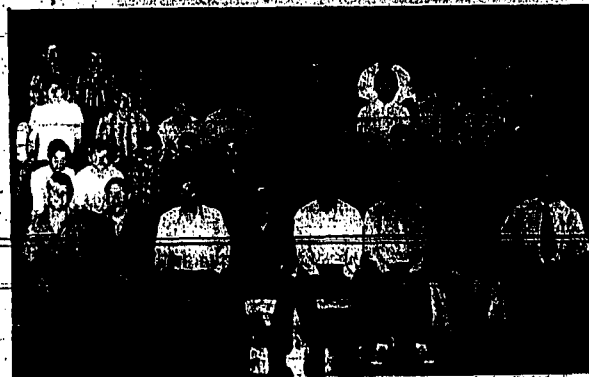
MURTAUGH CHAPTER — Mr. Clyde Hunter, Instructor



KIMBERLY CHAPTER — Mr. Jim Sorensen, Instructor



FILER CHAPTER — Mr. Russell Hall, Instructor



CASTLEFORD CHAPTER — Mr. Kevin Varin, Instructor

ACME MACHINE WORKS INC.
500 Main, Filer

BANK OF IDAHO
113 Main Ave. W., Twin Falls

BEAN GROWERS WAREHOUSE ASSOC.

BUTTREY FOODS
Blue Lakes Shopping Center, Twin Falls

CAIN'S FURNITURE & APPLIANCE
204 Main Ave. N., Twin Falls

D & B SUPPLY CO. INC.
202 2nd. Ave. N., Twin Falls

FEDERAL LAND BANK ASSOC.
Twin Falls, Burley, Rupert, Gooding

FIRST SECURITY BANK OF IDAHO
222 Main Ave. S., Twin Falls

GEM EQUIPMENT SALES INC.
Eastland Drive S., Twin Falls

GLOBE SEED & FEED CO. INC.
Truck Lane, Twin Falls

HENRY'S FARM SALES
446 Highway 30, Kimberly

IDAHO BEST INC.
Off Eastland Dr. S., Twin Falls

INDEPENDENT MEAT CO.
Orchard Dr., Twin Falls

MAGEL TIRE CO.
129 3rd Ave. N., Twin Falls

FULL CIRCLE INC.
(Formerly Magic Valley Growers)
Garry Gossing

Southern Idaho Production Credit Assoc.
246 3rd Ave. E., Twin Falls

TWIN FALLS BANK & TRUST CO.
Blue Lakes Branch & Downtown Twin Falls

UNITED OIL OF IDAHO INC.
1992 Kimberly Rd., Twin Falls

VOLCO BUILDERS SUPPLY INC.
1390 Highland Ave. E., Twin Falls

IDAHO FIRST NATIONAL BANK
103 Main Ave., Twin Falls

TF employees get raise

BY BONNIE BAIRD JONES
Times-News writer

TWIN FALLS — City Council members Tuesday night set March 20 at 8:30 p.m. as the time for a public hearing of the 1972 budget.

Although a total budget figure has not yet been announced, City Manager Jean Miller said Monday night there will probably be an 11 to 12 per cent hike this year.

City officials urged residents to attend the hearing and express their opinions on city programs proposed for 1972.

The budget will also include a 5.5 per cent salary increase for all city employees which was approved Tuesday night in a special resolution on the 1972 pay plan.

Miller also announced plans for the 1972 street reconstruction program and Councilman Tom Nelson asked for public opinion on a plan to step up the program with a full five mill levy for street programs.

A fund from the one cent per gallon gasoline tax earmarked for cities is being accumulated for a reconstruction program on badly deteriorated city streets, Miller said.

Nelson suggested the city step up the reconstruction program to make up for some of the lack of attention to streets over the past year.

expression of opinion on whether they would be willing to pay an additional amount of local taxes to expand this fund and do about twice as many streets each year until we can get current," Nelson said.

A five mill levy, he said, would mean about a 15 per cent increase in the city budget. It would mean about \$15 per year to a taxpayer who owns a \$20,000 cash value home, he said.

Miller said the city has about \$250,000 this year for street reconstruction from the gasoline tax and in addition will have a street budget for maintenance and the city's share in new construction.

Nelson emphasized the city would like to hear from the taxpayers prior to March 6 in order to include the program in the 1972 budget if taxpayers desire to follow this plan.

Council approves new lease

TWIN FALLS — A new lease agreement with the South Central Health District for use of space in the city has been approved.

It was approved Tuesday night by the Twin Falls City Council members.

The new lease is for a two-year period only and carries a stipulation the city may ask the department to find new quarters at the end of that time. If the city is ready to expand the engineering and provide needed office space for inspection departments by 1974, the lease will not be offered again, city officials explained.

Under new terms, the department will be paying \$4,464 per year rent for the basement laboratory area and second floor office space.

Current fees are \$1,800 for rent. The charges for light, water and heat will also increase to \$100 per month and janitorial services will be \$100 per month.

The department now pays \$50 per month for utilities and \$72 for janitorial services.

The lease agreement was accepted by the City Council, subject to approval of the health board at its meeting next week.

New greens fees for the Municipal Golf Course were approved, showing a slight increase. City residents will pay \$55 for a season ticket for men; \$50 for women and \$17.50 for students. Out of city residents will pay \$65 if men and \$60 if women for season tickets. Daily fees will be \$2.50 for 18 holes during week days and \$3 on weekends. The course maintains regulations for men only and women only on specific days and times and students may play prior to 5 p.m. weekdays for 50 cents with no charge for those on the high school golf team.

Sale. Our entire stock of work shoes. 20% off.



Sale 1439
Reg. 17.99
Tan leather with laces, black Vibram sole and heel



Sale 1039
Reg. 12.99
Black leather with laces, cushion insole



Sale 1199
Reg. 14.99
Black leather with laces, cushion insole

Receive awards

FOUR AREA men display plaques received Tuesday evening as top producers for Northrup King Co. in seed production. From the left are Clarence Werner, Green Isle division; Gene Funk, general class; Marlin Block, Sprite class, and R. Rudolf Martens, wax bean class. The awards were made at the eleventh annual awards banquet at the Holiday Inn in Twin Falls.

4 seed growers honored

By O.A. GUSKELER
Editor, Times-News

TWIN FALLS — One of the nation's farm seed leaders today had termed the recent dock strike a "travesty on everything this whole country stands for."

Kenneth Christensen, chairman of the board and chief executive officer of Northrup King and Co., told more than 200 seed growers of this area that "I hope we have seen the last of

such a situation." From Minneapolis, he was principal speaker at the company's annual seed growers' award banquet at the Holiday Inn Tuesday evening.

Four seed growers were cited for their contributions in production during the year and were given plaques and savings bonds by Emory K. Chaffee, manager of the Twin Falls headquarters who presided.

They were R. Rudolf Martens in the wax bean class; Marlin Block in Sprite bean class; Gene Funk, general bean class, and Clarence Werner, Green Isle class.

The company executive, who has received many national awards, is a native of Salt Lake City and who owns a ranch and hunting lodge in the Riggins area of Idaho, termed the dock strike a "most horrible affliction."

"It hurt the United States farmer," he said, "and it affected the seed business in this country. Millions of pounds of seed were tied up because of the lack of shipping facilities. Such a situation doesn't make sense to me in a nation where one out of every four acres is for export."

He told of company business prospects, termed the past year as a "fairly good one" and said "we had a good year because we had good growers." He pointed to a 28 per cent increase in garden seed sales.

In a discussion of company finances, he told the growers that 51.2 per cent of the Northrup King seed dollar goes to the grower. He added that 18.3 per cent is used for planting and processing, 22.9 per cent for sales, financing and advertising, 4.9 per cent for research, one per cent for investment, 1.4 per cent for federal and state income tax and three-tenths of a cent for shareholders.

He also announced that an addition would be constructed at the local plant later this year.

The speaker was introduced by Ralph (Pat) Kelly, Boise, manager of the intermountain division. Also speaking briefly was G. J. (Gabe) Patton, production manager for Northrup King Co. in charge of vegetable seed production.

"We are proud of our Magic Valley branch in Twin Falls," he said. "You handle more vegetable seed in one year than all the other eight branches of the company combined. Yours is the single most important branch in vegetable seed production."

2 TF men bound over for trial

TWIN FALLS — Combined Judge Shaw bound both men over to district court for trial. Golden Bennett represented the defendants and Leon Smith, prosecutor, represented the state.

Bennett earlier filed a motion of prejudice against Judge Meehl in the cases of Goodman and Wojcik on "grounds" the judge had heard several cases in which defendants faced the same charges and had bound all over to district court. Judge Meehl granted the motion.

Both are charged with delivery of a controlled substance, with Goodman facing two counts and

Wojcik one.

Judge Shaw bound both men over to district court for trial. Golden Bennett represented the defendants and Leon Smith, prosecutor, represented the state.

Bennett earlier filed a motion of prejudice against Judge Meehl in the cases of Goodman and Wojcik on "grounds" the judge had heard several cases in which defendants faced the same charges and had bound all over to district court. Judge Meehl granted the motion.

Both are charged with delivery of a controlled substance, with Goodman facing two counts and

Kimberly man, 19, arraigned in TF

TWIN FALLS — Walter Kim and was unable to come to the courtroom.

He waived preliminary hearing and was ordered held for district court trial. Ellison is charged with five counts of forgery in two complaints. Judge Shaw conducted the arraignment while in Twin Falls to conduct preliminary hearings on which Magistrate Daniel Meehl had been disqualified.

Supervising Magistrate Charles Shaw, Gooding, Court Clerk Evelyn Hintze, Prosecuting Atty. Leon Smith, and Public Defender Phillip Becker, Gooding, went to the jail to conduct the arraignment because the prisoner has been

EASTER GIFT IDEA Color portrait of your child, 1.49.

Truly professional portraits. Select from several poses.

- Large 5 x 7" size photo . . . 1.49 each
- Set of 4 wallet size . . . 1.49 set



Two children photographed together . . . 2.98



A Penney exclusive! Full color portraits in a size suitable for framing. Perfect for gifts. All portraits delivered to you at our store by Penney associates. Age limit 12 years.

Deals Tuesday thru Saturday February 28-March 4

Location: Downtown

JCPenney
The values are here every day

Small rugs with a big decorating effect.

Sale 297

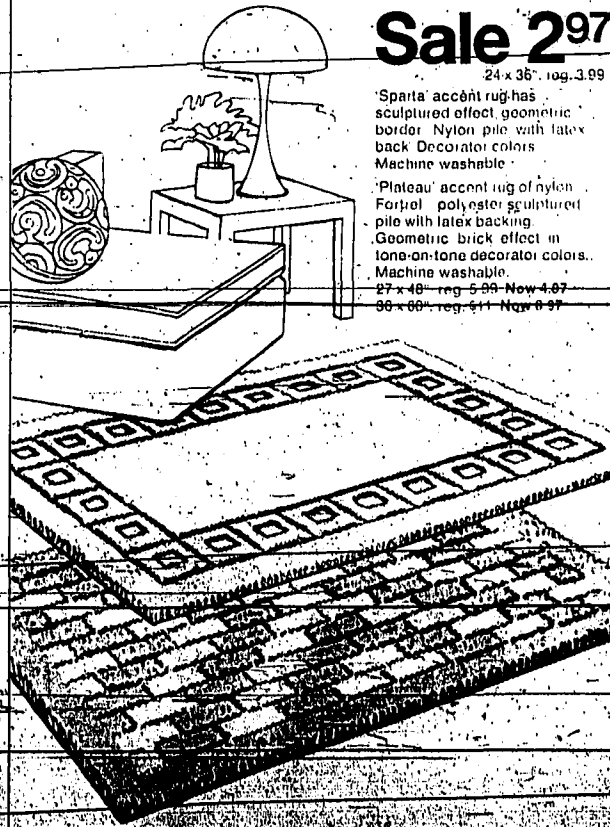
24 x 36" rug, 3.99

'Sparta' accent rug has sculptured effect, geometric border. Nylon pile with latex back. Decorator colors. Machine washable.

'Plateau' accent rug of nylon. Fortrol polyester sculptured pile with latex backing. Geometric brick effect in tone-on-tone decorator colors. Machine washable.

27 x 48" rug 5.99 Now 4.97

36 x 66" rug 9.99 Now 8.97



JCPenney
The values are here every day

CARPETS

LARGEST

SELECTION

LOWEST

PRICES

Endorses code

BOISE (UPI) — Idaho Supreme Court Chief Justice Henry F. McQuade has endorsed the controversial new Idaho Criminal Code with some amendments.

"Basically this code is an improvement over the old criminal code since it eliminates many of the disparities and clarified areas of uncertainty under the old law," he said.

McQuade made his comments in a letter to Rep. Clyde Keithly, R-Nampa.

However, there are certain areas in which amendment is of assistance, and I believe that most of these amendments have been introduced or are in the process of being introduced at this time," McQuade said.

Landlords object to regulatory bill

BOISE (UPI) — Landlords

objecting to proposed legislation regulating landlord-tenant relationships warned Tuesday night passage of the bill would discourage investment in rental units, particularly in low-income housing.

But proponents of the measure told the Senate State Affairs Committee passage would allow tenants to demand housing "fit for human habitation" without fear of eviction.

The hearing was called to discuss the landlord-tenant bill and another to create a statewide housing authority to issue bonds, accept federal grants, lend technical assistance or in low population areas operate in the absence of any other housing authority.

But the bulk of the testimony was given over the landlord-tenant bill proposed originally by the statewide housing coalition.

Norman Zuckerman, Boise, president of the Idaho Apartment Owners' Association, agrees the present "mish-mash of law does need clarification."

But said the proposed legislation would be so time-consuming and so expensive for landlords to administer the incentive

to invest in rental housing would be eliminated.

He said the language outlining tenants' actions when they have complaints — including depositing rent in a bank or with the county clerk for up to six months or until the situation is remedied — would "hamstring and make the landlord's life somewhat miserable."

Dave Samuelson, Boise, drew laughs from the audience when he told the committee there is "no such thing as slum housing. There are only slum people."

He said the legislation was "completely unnecessary and unfair to the building owner" and, because of some provisions for remedies available to tenants, should be called "the dead beat's delight act."

William J. Dee, Grangeville,

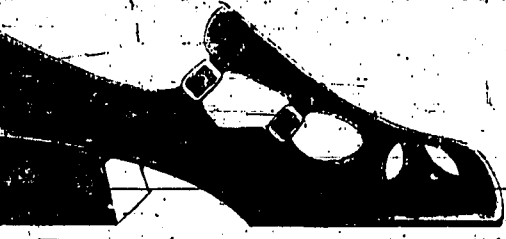
an attorney representing several landlords, said the bill was "the completely radical proposal of a basic change in Idaho's philosophy and jurisprudence towards private property which has been in existence since statehood."

Dee said it appeared as written the landlord would have to go to court to evict a tenant or claim property damage while a tenant could withhold rent merely by complaining of some fault.

He also said the measure made landlords particularly vulnerable since many determinations — such as the condition of the unit or the kind of work needed for repairs — is left completely to the tenants' judgment.



\$9.95 SOFT, IT'S CATCHING!



When you put on these shoes, you'll start showing the soft symptoms: easier, freer, softer walking... in smooth, rich leather. You'll catch on fast! A. Classic lines, tassel front. In Red, White, Bone Navy, Tan, or Black soft leather uppers. \$16. B. Two-T strapped, teardrop cutouts. In Red, Bone Navy or Tan leather uppers, White or Black crinkle patent. \$16.

come.

Williams SHOES

ON THE MALL

Hospital chief answers charge

OROFINO (UPI) — A critical report on State Hospital North, Orofino, released Friday by a Mental Health Association of Idaho task force, "is unfounded knowledge," the hospital superintendent said Tuesday.

Dr. William V. VanDyne said the six members of the task force "certainly have a right to their opinions."

But I see no formal training or credentials in either

medicine or psychiatry to evaluate medical-psychiatric facility," he said.

Included in the task force report was a recommendation to the State Board of Health that Van Dyne be fired.

The group also recommended the board investigate the Department of Health, division of mental health to upgrade its performance.

State gets control of roadside zoos

BOISE (UPI) — The house approved 56-12 and sent to the senate Tuesday a bill to give the Idaho Fish and Game Department control of roadside zoos and menageries.

Under the proposal anyone wanting to maintain such a zoo, menagerie or live display of animals must first obtain a permit from the department. Publicly-supported zoos would be exempted.

Rep. Larry Looney, D-Coeur d'Alene, floor sponsor of the bill, said it offers a way to assure humane treatment of animals.

But Rep. Allan E. Larsen, R-Blackfoot, said it gives too much power to the fish and game department. He urged the house to withdraw the bill and write a better one.

Rep. Wayne Tibbitts, D-Lorenzo, agreed, saying the bill contains "no guidelines, no criteria" for the department to follow.

Yet Rep. Emery Hedlund, D-St. Maries, said he could see nothing wrong with the measure.

"All it tries to do is protect

some innocent animals," Hedlund said. "If you are afraid of this bill you must be mistreating some animals."

Rep. Don Brenna, D-Pocahontas, said he felt the bill was an attempt to take power from local units of government. If there is a problem in a certain area of the state, he asked, why can't the county officials take care of it?

"Couldn't the health department or the Humane Society step in?" asked Rep. Walter Carr, D-Emmett.

Looney said no, that there are no provisions on the law books at present which would allow them to do this.

Rep. Larry Jackson, R-Boise, said that while he has reservations about this kind of legislation he believes those who operate roadside zoos "are doing a miserable job of it."



Funds OK'd

WASHINGTON (UPI) — Rep.

Orval Hansen, R-Idaho, announced today that the Shoshone Joint School District will receive immediate payment of \$1,826. The grant involves impact aid funds from the Department of Health, Education and Welfare.

Hansen said the funds are partial payment of federal aid in the current fiscal year under the impact aid program, which provides assistance to schools attended by children of federal employees.

The amount awarded today is earmarked for salaries, equipment and general maintenance expenses.

Vocational plan funds approved

BOISE (UPI) — Without a word of dissenting debate, the house approved 67-1 and sent to the senate Tuesday legislation designed to provide funds for cooperative vocational education programs.

Under the proposal, cooperative service agencies handling such programs for more than one school district could levy up to five mills for a period of up to 10 years.

Legislators from Canyon County strongly urged passage of the measure which they said would be of especial benefit to their school districts.

They were supported by Rep.

John Reardon, R-Boise, who said this is "one good step forward" toward improving vocational-technical education in the public schools.

Rep. Clyde Keithly, R-Nampa, who opposed a similar measure last year, said he now was for the plan because school district reorganization was not coming fast enough.

This bill, Rep. Ed Hedges, R-Boise, said, might lead to more consultation of school districts when those using the cooperative program begin to see the advantages of reorganization.

Salary schedule killed in senate

BOISE (UPI) — Unwilling to substitute their judgment for local decisions, the senators killed 17-17 Tuesday a bill to set a salary schedule for prosecuting attorneys based on county population.

Sen. Nels Solberg, D-Grangeville, sitting in the chair in the absence of Senate President Jack Murphy, ruled the measure failed for lack of a majority. Sen. David Bivens, R-Payette, served notice of possible reconsideration.

The measure, proposed by Sen. Wayne Kidwell, R-Boise, as a "workable approach" to the salaries set by the legislature, would have paid on a graduated scale ranging from \$20,000 per year in counties of 60,000 or more and \$18,000 in counties between 40,000 and 60,000 to a maximum of \$8,000 per year computed at \$20 per hour in counties under 5,000.

The measure also required those in counties of 40,000 or more to devote themselves to their duties on a full time basis.

The legislature now sets

salaries for both prosecutors and county commissioners, usually after consultation with the commissioners.

Sen. Robert Saxvik, D-Burley, favored the measure as a means of ending the "dart board approach" and the "little telephone conservation negotiation program."

Idaho legislative log

February 22, 1972

SB 1422 (State Affairs) — Provides the

Idaho Fish and Game Department control of roadside zoos and menageries.

SB 1423 (State Affairs) — Provides the

Idaho Fish and Game Department control of roadside zoos and menageries.

SB 1424 (State Affairs) — Provides the

Idaho Fish and Game Department control of roadside zoos and menageries.

SB 1425 (State Affairs) — Provides the

Idaho Fish and Game Department control of roadside zoos and menageries.

SB 1426 (State Affairs) — Provides the

Idaho Fish and Game Department control of roadside zoos and menageries.

SB 1427 (State Affairs) — Provides the

Idaho Fish and Game Department control of roadside zoos and menageries.

SB 1428 (State Affairs) — Provides the

Idaho Fish and Game Department control of roadside zoos and menageries.

SB 1429 (State Affairs) — Provides the

Idaho Fish and Game Department control of roadside zoos and menageries.

SB 1430 (State Affairs) — Provides the

Idaho Fish and Game Department control of roadside zoos and menageries.

SB 1431 (State Affairs) — Provides the

Idaho Fish and Game Department control of roadside zoos and menageries.

SB 1432 (State Affairs) — Provides the

Idaho Fish and Game Department control of roadside zoos and menageries.

SB 1433 (State Affairs) — Provides the

Idaho Fish and Game Department control of roadside zoos and menageries.

SB 1434 (State Affairs) — Provides the

Idaho Fish and Game Department control of roadside zoos and menageries.

SB 1435 (State Affairs) — Provides the

Idaho Fish and Game Department control of roadside zoos and menageries.

SB 1436 (State Affairs) — Provides the

Idaho Fish and Game Department control of roadside zoos and menageries.

SB 1437 (State Affairs) — Provides the

Idaho Fish and Game Department control of roadside zoos and menageries.

SB 1438 (State Affairs) — Provides the

Idaho Fish and Game Department control of roadside zoos and menageries.

SB 1439 (State Affairs) — Provides the

Idaho Fish and Game Department control of roadside zoos and menageries.

SB 1440 (State Affairs) — Provides the

Idaho Fish and Game Department control of roadside zoos and menageries.

SB 1441 (State Affairs) — Provides the

Idaho Fish and Game Department control of roadside zoos and menageries.

SB 1442 (State Affairs) — Provides the

Idaho Fish and Game Department control of roadside zoos and menageries.

SB 1443 (State Affairs) — Provides the

Idaho Fish and Game Department control of roadside zoos and menageries.

SB 1444 (State Affairs) — Provides the

Idaho Fish and Game Department control of roadside zoos and menageries.

SB 1445 (State Affairs) — Provides the

Idaho Fish and Game Department control of roadside zoos and menageries.

SB 1446 (State Affairs) — Provides the

Idaho Fish and Game Department control of roadside zoos and menageries.

SB 1447 (State Affairs) — Provides the

Idaho Fish and Game Department control of roadside zoos and menageries.

SB 1448 (State Affairs) — Provides the

Idaho Fish and Game Department control of roadside zoos and menageries.

SB 1449 (State Affairs) — Provides the

Idaho Fish and Game Department control of roadside zoos and menageries.

SB 1450 (State Affairs) — Provides the

Idaho Fish and Game Department control of roadside zoos and menageries.

SB 1451 (State Affairs) — Provides the

Idaho Fish and Game Department control of roadside zoos and menageries.

SB 1452 (State Affairs) — Provides the

Idaho Fish and Game Department control of roadside zoos and menageries.

SB 1453 (State Affairs) — Provides the

Idaho Fish and Game Department control of roadside zoos and menageries.

SB 1454 (State Affairs) — Provides the

Idaho Fish and Game Department control of roadside zoos and menageries.

SB 1455 (State Affairs) — Provides the

Idaho Fish and Game Department control of roadside zoos and menageries.

SB 1456 (State Affairs) — Provides the

Idaho Fish and Game Department control of roadside zoos and menageries.

SB 1457 (State Affairs) — Provides the

Idaho Fish and Game Department control of roadside zoos and menageries.

SB 1458 (State Affairs) — Provides the

Idaho Fish and Game Department control of roadside zoos and menageries.

SB 1459 (State Affairs) — Provides the

Idaho Fish and Game Department control of roadside zoos and menageries.

SB 1460 (State Affairs) — Provides the

Idaho Fish and Game Department control of roadside zoos and menageries.

SB 1461 (State Affairs) — Provides the

Idaho Fish and Game Department control of roadside zoos and menageries.

SB 1462 (State Affairs) — Provides the

Idaho Fish and Game Department control of roadside zoos and menageries.

SB 1463 (State Affairs) — Provides the

Idaho Fish and Game Department control of roadside zoos and menageries.

SB 1464 (State Affairs) — Provides the

Idaho Fish and Game Department control of roadside zoos and menageries.

SB 1465 (State Affairs) — Provides the

Idaho Fish and Game Department control of roadside zoos and menageries.

SB 1466 (State Affairs) — Provides the

Idaho Fish and Game Department control of roadside zoos and menageries.

SB 1467 (State Affairs) — Provides the

Idaho Fish and Game Department control of roadside zoos and menageries.

SB 1468 (State Affairs) — Provides the

Idaho Fish and Game Department control of roadside zoos and menageries.

SB 1469 (State Affairs) — Provides the

Idaho Fish and Game Department control of roadside zoos and menageries.

SB 1470 (State Affairs) — Provides the

Idaho Fish and Game Department control of roadside zoos and menageries.

SB 1471 (State Affairs) — Provides the

Idaho Fish and Game Department control of roadside zoos and menageries.

SB 1472 (State Affairs) — Provides the

Idaho Fish and Game Department control of roadside zoos and menageries.

SB 1473 (State Affairs) — Provides the

Idaho Fish and Game Department control of roadside zoos and menageries.

SB 1474 (State Affairs) — Provides the

Idaho Fish and Game Department control of roadside zoos and menageries.

SB 1475 (State Affairs) — Provides the

Idaho Fish and Game Department control of roadside zoos and menageries.

SB 1476 (State Affairs) — Provides the

Idaho Fish and Game Department control of roadside zoos and menageries.

SB 1477 (State Affairs) — Provides the

Idaho Fish and Game Department control of roadside zoos and menageries.

SB 1478 (State Affairs) — Provides the

Idaho Fish and Game Department control of roadside zoos and menageries.

SB 1479 (State Affairs) — Provides the

Idaho Fish and Game Department control of roadside zoos and menageries.

SB 1480 (State Affairs) — Provides the

Idaho Fish and Game Department control of roadside zoos and menageries.

SB 1481 (State Affairs) — Provides the

Idaho Fish and Game Department control of roadside zoos and menageries.

SB 1482 (State Affairs) — Provides the

Idaho Fish and Game Department control of roadside zoos and menageries.

SB 1483 (State Affairs) — Provides the

Idaho Fish and Game Department control of roadside zoos and menageries.

SB 1484 (State Affairs) — Provides the

Idaho Fish and Game Department control of roadside zoos and menageries.

SB 1485 (State Affairs) — Provides the

Idaho Fish and Game Department control of roadside zoos and menageries.

SB 1486 (State Affairs) — Provides the

Idaho Fish and Game Department control of roadside zoos and menageries.

SB 1487 (State Affairs) — Provides the

Idaho Fish and Game Department control of roadside zoos and menageries.

SB 1488 (State Affairs) — Provides the

Idaho Fish and Game Department control of roadside zoos and menageries.

SB 1489 (State Affairs) — Provides the

Idaho Fish and Game Department control of roadside zoos and menageries.

Deston Upholstery

"HERITAGE"

a most distinguished collection of sofas and chairs

Drexel

SOFAS START AT \$469 LESS 20%

CHAIRS START AT \$210 LESS 20%

20% Factory-Authorized DISCOUNT

On all Heritage and Drexel Upholstered Sofas and Chairs

On the floor or Special Orders Until March 15, 1972

Petersen FURNITURE

150 Shoshone St. East Twin Falls, Idaho 83301

Perfume fades... Candy is Eaten... Flowers Wilt...

A DIAMOND IS FOREVER

Sterling JEWELRY CO.

ON THE MALL - BY THE FOUNTAIN

Market Review

NEW YORK (UPI)—The stock market held a small gain in active trading during the first three hours Wednesday on the New York Stock Exchange.

The Dow Jones industrial average, which opened more than a point off, rose 0.65 to 814.29 shortly before 1:15 p.m. Standard & Poor's 500 stock index gained 0.30 to 105.59.

Of the 1,683 issues traded, 760 advanced and 551 declined. The three-hour turnover amounted to 10,710,000 shares, compared with 10,930,000 during the comparable period Tuesday.

Investors were encouraged by a report from the Labor Department showing the January cost of living index increased 0.3 percent, less than December's rise on an adjusted basis. Unadjusted, the figure was 0.1 percent, the lowest since last September when it went up the same amount.

Some analysts noted profit taking, which has been a factor in recent sessions, was undercutting the market. Others said they believed the market would follow a trend of backing and filling.

Bausch & Lomb, delayed in opening, was one of the weakest features, with a plunge of 11. Polaroid was another loser, down 1 1/4. Wrigley gained 3 1/4. Levitz Furniture, 1 1/4, and Curtiss-Wright, 1 1/4.

Steels and motors were mixed. Chemicals headed in both directions. Oils generally were higher. Natoms rose 2 1/4.

Rails and airlines were mixed. Trans World Airlines dropped 1. Aircrafts were higher. Lockheed added 1 1/4.

Strong points in the electronics and computers were IBM, up 2 1/4; Control Data, 1 1/4; Burroughs, 3 1/4; and Honeywell, 1 1/4.

1 P.M. PRICES

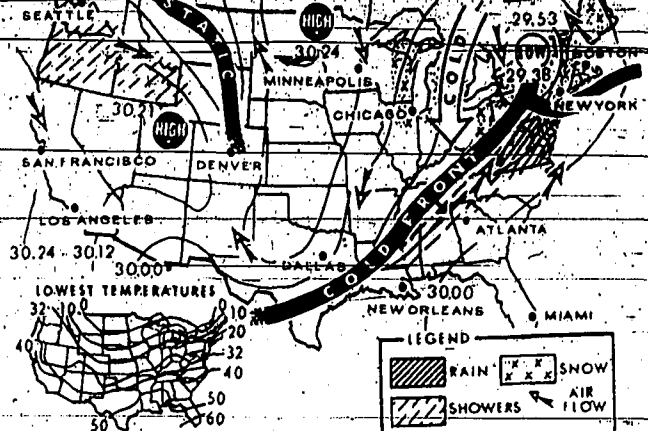
NEW YORK STOCK EXCHANGE

Stock	Price	Change
IBM	160 1/4	+2 1/4
Control Data	44 1/4	+1 1/4
Burroughs	34 1/4	+3 1/4
Honeywell	24 1/4	+1 1/4
IBM Corp	160 1/4	+2 1/4
Control Data Corp	44 1/4	+1 1/4
Burroughs Corp	34 1/4	+3 1/4
Honeywell Corp	24 1/4	+1 1/4
IBM Corp	160 1/4	+2 1/4
Control Data Corp	44 1/4	+1 1/4
Burroughs Corp	34 1/4	+3 1/4
Honeywell Corp	24 1/4	+1 1/4

Stock	Price	Change
IBM	160 1/4	+2 1/4
Control Data	44 1/4	+1 1/4
Burroughs	34 1/4	+3 1/4
Honeywell	24 1/4	+1 1/4
IBM Corp	160 1/4	+2 1/4
Control Data Corp	44 1/4	+1 1/4
Burroughs Corp	34 1/4	+3 1/4
Honeywell Corp	24 1/4	+1 1/4
IBM Corp	160 1/4	+2 1/4
Control Data Corp	44 1/4	+1 1/4
Burroughs Corp	34 1/4	+3 1/4
Honeywell Corp	24 1/4	+1 1/4

Stock	Price	Change
IBM	160 1/4	+2 1/4
Control Data	44 1/4	+1 1/4
Burroughs	34 1/4	+3 1/4
Honeywell	24 1/4	+1 1/4
IBM Corp	160 1/4	+2 1/4
Control Data Corp	44 1/4	+1 1/4
Burroughs Corp	34 1/4	+3 1/4
Honeywell Corp	24 1/4	+1 1/4
IBM Corp	160 1/4	+2 1/4
Control Data Corp	44 1/4	+1 1/4
Burroughs Corp	34 1/4	+3 1/4
Honeywell Corp	24 1/4	+1 1/4

Idaho Valley Weather Report



Scattered showers to continue

Twin Falls, northside, Burley, Rupert areas: Variable cloudiness tonight and Thursday. Chance of scattered showers. Snow level near 4,500 feet. Cooler with overnight lows 23 to 33. Highs Thursday 33 to 45.

Outlook for Friday, partly cloudy with slight chance of showers.

Camas Prairie, Hahley and lower Wood River Valley: Considerable cloudiness tonight and Thursday. Periods of widely scattered snow showers. Cooler with overnight lows mostly in the teens. Highs Thursday 26 to 36.

Outlook for Friday: cloudy with chance of showers.

Central Idaho mountains south of the Salmon River: Cloudy with periods of scattered snow showers through Thursday. Under with lows 15 to 25 and highs Thursday in the high 30s.

Synopsis: A deep low pressure center has settled in off the Oregon-Washington Coast. This storm center continues to buffet the Pacific Coast as far south as the San Francisco Bay area with periods of rain with only brief periods of scattered showers between.

This general weather pattern is forecast to continue at least through Thursday with the extended outlook predicting similar weather through Sunday. High temperatures over the weekend are forecast in the 30s north and 40s south with lows in the upper teens and 20s.

City	High	Low
Atlanta	72	48
Boston	41	28
Charlotte, S.C.	71	48
Chicago	28	24
Columbus, O.	36	17
Denver	68	28
Des Moines	50	24
Detroit	30	16
El Paso	73	43
Houston	78	52
Indianapolis	35	23
Kansas City	34	33
Memphis	63	39
Miami Beach	72	68
Minneapolis	15	13
Orlando	74	51
Phoenix	80	49
Pittsburgh	43	11
Portland, Me.	29	07
Portland, Ore.	50	38
Raleigh	60	25
Richmond	50	22
Salt Lake City	63	32
San Francisco	67	62
Seattle	48	35
Spokane	13	05
Tampa	67	55
Washington	17	21
Wichita	35	23

Twin Falls Temperatures

Yesterday	High	Low
49	30	20
Normal	40	20

Mutual Funds

Fund	Price	Change
First	10.12	+0.01
Second	10.12	+0.01
Third	10.12	+0.01
Fourth	10.12	+0.01
Fifth	10.12	+0.01

No gain in silver

SPOKANE (UPI)—Little hope for improvement in the mining industry for the Pacific Northwest has been offered by officials of major mining firms.

Both William H. Love, president of Hecla Mining Co., and Hollin Farmin, who holds a similar position with Day Mines, said the average price of silver could be lower this year than last.

They said even though the price of the metal dipped to \$1.29 per ounce during last year, its average price was \$1.35 per ounce. Currently, the price of the metal which is the mainstay of the Coeur d'Alene mining district mines of Northern Idaho, is about \$1.50 per ounce.

However, Love and Farmin said there is little possibility of it breaking loose and climbing in the near future.

Spot Metals

Commodity	Price	Change
Aluminum	23.00	+0.01
Copper	49.87	+0.01
Lead	11.50	+0.01
Manganese	99.00	+0.01
Nickel	33.25	+0.01
Platinum	99.50	+0.01
Quicksilver	215.25	+0.01
Tungsten	98.00	+0.01
Zinc	17.00	+0.01

LEGAL NOTICE

NOTICE OF SALE
U.S. District Court for the District of Idaho
In re: The Estate of [Name], deceased.
Notice is hereby given that the undersigned, [Name], Executor of the will of the above named decedent, will sell at public auction, to wit: at the Court House in the City of Boise, Idaho, on [Date], at [Time], all of the real and personal property of the above named decedent, as the same may be found in the inventory and list of assets filed with the Court in this cause.

Commodity Futures

Commodity	Price	Change
May Idaho Potatoes	5.40	+0.05
May Maine Potatoes	3.49	+0.01
April live cattle	35.10	+0.10
August live cattle	33.35	+0.05
June hogs	26.67	+0.05
March wheat	1.85	+0.01
March corn	1.18	+0.01
March eggs	29.55	+0.05
July silver	161.90	+0.10
April silver coins	119.00	+0.01

Denny's

Addison Ave. West

Full Cut Round or Swiss

STEAK

Lb. 98¢

Morrell Boneless, Fully Cooked

HAM

Lb. 98¢

Grade "A" Whole

Fryers

.....lb. 33¢

Extra Fancy Slicing Tomatoes

Lb. 29¢

IGA Canned

Milk

7 cans \$1.00

With IGA Coupon

IGA

FRUIT COCKTAIL

4 cans \$1.00

IGA Soft

MARGARINE

3 lb. tubs \$1.00

Zee

TOWELS

4 large rolls \$1.00

SHOP DENNY'S

FOR ALL IGA SPECIALS

DOUBLE STAMPS

\$20.00 ORDERS!

Farm Milk price hike asked

WASHINGTON, D.C. — Milk prices at parity have been called for by the National Milk Producers Federation.

"The government should take every step possible to bring milk prices to parity," said Patrick B. Healy, secretary of the federation.

"As a first step the secretary of agriculture should announce that the support level for 1972 will be 85 per cent. The government should also use all the laws at its disposal to raise milk prices to parity. The goal of agricultural legislation, including the price support authority, is to achieve parity prices."

The cooperative associations of dairy farmers are making every effort to achieve parity prices, and realize the necessity of government assistance such as the price support program," Healy added.

"It will be necessary for the secretary of agriculture to announce for the marketing year beginning April 1, 1972, a level of price support to dairy farmers for milk, and prices at which the Commodity Credit Corporation will purchase dairy products to achieve the announced price support level."

"On March 25, 1971, the secretary of agriculture announced a price level of \$4.93 per hundredweight for milk of average butterfat content for the marketing year beginning April 1, 1971, and ending March 31, 1972. On March 26, 1971, he announced prices at which the Commodity Credit Corporation would purchase butter, nonfat dry milk, and cheese as a means of assuring dairy farmers the support level of \$4.93 per hundredweight for their milk during the year," he said.



Coyote expert sets talk

JEROME — Dr. Frederick H. Wagner, Logan, Utah, will address the annual meeting of the Southern Idaho Section, Society of Range Management, Saturday.

The meeting is set for 7:30 p.m. at Wood Cafe.

Dr. Wagner will speak on "What We Know About the Coyote." He is associate dean of the college of natural resources at Utah State University. Dr. Wagner was a member of the seven-man Cain Committee which recently advised the Department of the Interior and President Nixon on predatory animal control.

Laird Noh, spokesman for the southern Idaho section of the society, said the meeting will be open to the public because of interest in Dr. Wagner's subject. Persons wishing further information about the meeting may call 733-3817, Twin Falls, or 678-3393, Burley.

Dr. Wagner is also co-director of the Desert Biome and a member of the United States-International Biological Program. His research on the coyote has been conducted extensively in Utah's Curlew Valley.

No-strike law wins support

SPOKANE (UPI) — Two officials with the wheat industry Monday urged that permanent legislation be enacted to prevent future dock strikes.

Scott Hanson, Washington Wheat Commission administrator, and Merrill Sathoff, Pacific Northwest Grain-Dealers Association executive vice president, said without permanent legislation preventing dock strikes "our long-term efforts to rebuild lost markets will probably fail."

The two men noted that if the proposed settlement is approved by the pay board, "it is only for 18 months and unless customers for northwest grain can be assured a strike will not occur again, they will be reluctant to buy."

Both also said there was a "crisis in handling and storage" of grain once this year's crop, expected to be of record size, is harvested.

"This will happen unless a substantial amount of grain which has been stored as a result of the strike, and last year's bumper crop, are moved to overseas customers," they said.

Sathoff said with bins now loaded and wheat being stockpiled waiting for end of the 136 day old strike, another 50 million bushels will accumulate.

Contract set

PAUL — Melvin West, Paul, chairman of Potato Growers of Idaho, Inc., bargaining committee, said Monday that an agreement has been reached on the 1972 pre-season potato marketing contracts with the Holland Jones Potato Co., Rupert.

Base price is the same as the 1971 crop contract. Some modification was made on the incentive and incentive clauses on the U.S. No. 1 Potato Growers of Idaho, Inc., members are authorized to seek acreage commitments and contracts from Holland Jones Potato Co.

Foreign market gain difficult

SPOKANE (UPI) — The vice chairman of the Washington Wheat Commission says the Pacific Northwest is going to have a difficult time regaining foreign wheat markets lost during the recently ended West Coast dock strike.

Jack Felgenhauer said now that Asian wheat buyers were forced to turn to Australian and Canadian wheat sources during the strike, many will be reluctant to return to Pacific Northwest wheat because they now consider the region to be an "unreliable source."

He said even if federal legislation is passed to control marketing service, will speak on the impact of the recently ended West Coast dock strike on future wheat exports, the changing requirements of foreign buyers on U.S. wheat, and the long-term outlook for wheat exports from the Pacific Northwest.

Wheat meet set

SPOKANE (UPI) — An official of the U.S. Export Marketing Service will be one of the main speakers next Monday during the opening session of the Pacific Northwest Wheat Industry Outlook Conference.

Clifford G. Pulvermacher, general sales manager for the marketing service, will speak on the impact of the recently ended West Coast dock strike on future wheat exports, the changing requirements of foreign buyers on U.S. wheat, and the long-term outlook for wheat exports from the Pacific Northwest.

Idaho grain moves

LEWISTON (UPI) — Return of longshoremen to their jobs at West Coast ports has started movement of wheat from North Central Idaho terminals toward the coast, according to Lewis J. Phillips, manager of Lewiston Grain Growers, Inc.

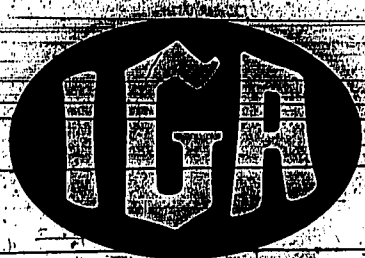
Phillips said about 200,000 bushels of wheat had been held at the North Central Idaho terminals owned by GVA Inc. Growers since the start of the strike.

"Now we're shipping it out," he said. "Hopefully, this area's wheat will go into the export market seriously curtailed by the prolonged strike."

Produce Prices

CHICAGO (UPI) — Live cattle and hog prices on Feb. 22

	High	Low	Settle
Apr	24.20	23.20	24.10
Jun	23.40	22.40	23.30
Aug	22.60	21.60	22.50
Oct	21.80	20.80	21.70
Dec	21.00	20.00	20.90
Feb	20.20	19.20	20.10
Apr	19.40	18.40	19.30
Jun	18.60	17.60	18.50
Aug	17.80	16.80	17.70
Oct	17.00	16.00	16.90
Dec	16.20	15.20	16.10
Feb	15.40	14.40	15.30
Apr	14.60	13.60	14.50
Jun	13.80	12.80	13.70
Aug	13.00	12.00	12.90
Oct	12.20	11.20	12.10
Dec	11.40	10.40	11.30
Feb	10.60	9.60	10.50
Apr	9.80	8.80	9.70
Jun	9.00	8.00	8.90
Aug	8.20	7.20	8.10
Oct	7.40	6.40	7.30
Dec	6.60	5.60	6.50
Feb	5.80	4.80	5.70
Apr	5.00	4.00	4.90
Jun	4.20	3.20	4.10
Aug	3.40	2.40	3.30
Oct	2.60	1.60	2.50
Dec	1.80	0.80	1.70
Feb	1.00	0.00	0.90
Apr	0.20	-0.20	0.10
Jun	-0.40	-1.40	-0.30
Aug	-1.20	-2.20	-1.10
Oct	-2.00	-3.00	-1.90
Dec	-2.80	-3.80	-2.70
Feb	-3.60	-4.60	-3.50
Apr	-4.40	-5.40	-4.30
Jun	-5.20	-6.20	-5.10
Aug	-6.00	-7.00	-5.90
Oct	-6.80	-7.80	-6.70
Dec	-7.60	-8.60	-7.50
Feb	-8.40	-9.40	-8.30
Apr	-9.20	-10.20	-9.10
Jun	-10.00	-11.00	-9.90
Aug	-10.80	-11.80	-10.70
Oct	-11.60	-12.60	-11.50
Dec	-12.40	-13.40	-12.30
Feb	-13.20	-14.20	-13.10
Apr	-14.00	-15.00	-13.90
Jun	-14.80	-15.80	-14.70
Aug	-15.60	-16.60	-15.50
Oct	-16.40	-17.40	-16.30
Dec	-17.20	-18.20	-17.10
Feb	-18.00	-19.00	-17.90
Apr	-18.80	-19.80	-18.70
Jun	-19.60	-20.60	-19.50
Aug	-20.40	-21.40	-20.30
Oct	-21.20	-22.20	-21.10
Dec	-22.00	-23.00	-21.90
Feb	-22.80	-23.80	-22.70
Apr	-23.60	-24.60	-23.50
Jun	-24.40	-25.40	-24.30
Aug	-25.20	-26.20	-25.10
Oct	-26.00	-27.00	-25.90
Dec	-26.80	-27.80	-26.70
Feb	-27.60	-28.60	-27.50
Apr	-28.40	-29.40	-28.30
Jun	-29.20	-30.20	-29.10
Aug	-30.00	-31.00	-29.90
Oct	-30.80	-31.80	-30.70
Dec	-31.60	-32.60	-31.50
Feb	-32.40	-33.40	-32.30
Apr	-33.20	-34.20	-33.10
Jun	-34.00	-35.00	-33.90
Aug	-34.80	-35.80	-34.70
Oct	-35.60	-36.60	-35.50
Dec	-36.40	-37.40	-36.30
Feb	-37.20	-38.20	-37.10
Apr	-38.00	-39.00	-37.90
Jun	-38.80	-39.80	-38.70
Aug	-39.60	-40.60	-39.50
Oct	-40.40	-41.40	-40.30
Dec	-41.20	-42.20	-41.10
Feb	-42.00	-43.00	-41.90
Apr	-42.80	-43.80	-42.70
Jun	-43.60	-44.60	-43.50
Aug	-44.40	-45.40	-44.30
Oct	-45.20	-46.20	-45.10
Dec	-46.00	-47.00	-45.90
Feb	-46.80	-47.80	-46.70
Apr	-47.60	-48.60	-47.50
Jun	-48.40	-49.40	-48.30
Aug	-49.20	-50.20	-49.10
Oct	-50.00	-51.00	-49.90
Dec	-50.80	-51.80	-50.70
Feb	-51.60	-52.60	-51.50
Apr	-52.40	-53.40	-52.30
Jun	-53.20	-54.20	-53.10
Aug	-54.00	-55.00	-53.90
Oct	-54.80	-55.80	-54.70
Dec	-55.60	-56.60	-55.50
Feb	-56.40	-57.40	-56.30
Apr	-57.20	-58.20	-57.10
Jun	-58.00	-59.00	-57.90
Aug	-58.80	-59.80	-58.70
Oct	-59.60	-60.60	-59.50
Dec	-60.40	-61.40	-60.30
Feb	-61.20	-62.20	-61.10
Apr	-62.00	-63.00	-61.90
Jun	-62.80	-63.80	-62.70
Aug	-63.60	-64.60	-63.50
Oct	-64.40	-65.40	-64.30
Dec	-65.20	-66.20	-65.10
Feb	-66.00	-67.00	-65.90
Apr	-66.80	-67.80	-66.70
Jun	-67.60	-68.60	-67.50
Aug	-68.40	-69.40	-68.30
Oct	-69.20	-70.20	-69.10
Dec	-70.00	-71.00	-69.90
Feb	-70.80	-71.80	-70.70
Apr	-71.60	-72.60	-71.50
Jun	-72.40	-73.40	-72.30
Aug	-73.20	-74.20	-73.10
Oct	-74.00	-75.00	-73.90
Dec	-74.80	-75.80	-74.70
Feb	-75.60	-76.60	-75.50
Apr	-76.40	-77.40	-76.30
Jun	-77.20	-78.20	-77.10
Aug	-78.00	-79.00	-77.90
Oct	-78.80	-79.80	-78.70
Dec	-79.60	-80.60	-79.50
Feb	-80.40	-81.40	-80.30
Apr	-81.20	-82.20	-81.10
Jun	-82.00	-83.00	-81.90
Aug	-82.80	-83.80	-82.70
Oct	-83.60	-84.60	-83.50
Dec	-84.40	-85.40	-84.30
Feb	-85.20	-86.20	-85.10
Apr	-86.00	-87.00	-85.90
Jun	-86.80	-87.80	-86.70
Aug	-87.60	-88.60	-87.50
Oct	-88.40	-89.40	-88.30
Dec	-89.20	-90.20	-89.10
Feb	-90.00	-91.00	-89.90
Apr	-90.80	-91.80	-90.70
Jun	-91.60	-92.60	-91.50
Aug	-92.40	-93.40	-92.30
Oct	-93.20	-94.20	-93.10
Dec	-94.00	-95.00	-93.90
Feb	-94.80	-95.80	-94.70
Apr	-95.60	-96.60	-95.50
Jun	-96.40	-97.40	-96.30
Aug	-97.20	-98.20	-97.10
Oct	-98.00	-99.00	-97.90
Dec	-98.80	-99.80	-98.70
Feb	-99.60	-100.60	-99.50
Apr	-100.40	-101.40	-100.30
Jun	-101.20	-102.20	-101.10
Aug	-102.00	-103.00	-101.90
Oct	-102.80	-103.80	-102.70
Dec	-103.60	-104.60	-103.50
Feb	-104.40	-105.40	-104.30
Apr	-105.20	-106.20	-105.10
Jun	-106.00	-107.00	-105.90
Aug	-106.80	-107.80	-106.70
Oct	-107.60	-108.60	-107.50
Dec	-108.40	-109.40	-108.30
Feb	-109.20	-110.20	-109.10
Apr	-110.00	-111.00	-109.90
Jun	-110.80	-111.80	-110.70
Aug	-111.60	-112.60	-111.50
Oct	-112.40	-113.40	-112.30
Dec	-113.20	-114.20	-113.10
Feb	-114.00	-115.00	-113.90
Apr	-114.80	-115.80	-114.70
Jun	-115.60	-116.60	-115.50
Aug	-116.40	-117.40	-116.30
Oct	-117.20	-118.20	-117.10
Dec	-118.00	-119.00	-117.90
Feb	-118.80	-119.80	-118.70
Apr	-119.60	-120.60	-119.50
Jun	-120.40	-121.40	-120.30
Aug	-121.20	-122.20	-121.10
Oct	-122.00	-123.00	-121.90
Dec	-122.80	-123.80	-122.70
Feb	-123.60	-124.60	-123.50
Apr	-124.40	-125.40	-124.30
Jun	-125.20	-126.20	-125.10
Aug	-126.00	-127.00	-125.90
Oct	-126.80	-127.80	-126.70
Dec	-127.60	-128.60	-127.50
Feb	-128.40	-129.40	-128.30
Apr	-129.20	-130.20	-129.10
Jun	-130.00	-131.00	-129.90
Aug	-130.80	-131.80	-130.70
Oct	-131.60	-132.60	-131.50
Dec	-132.40	-133.40	-132.30
Feb	-133.20	-134.20	-133.10
Apr	-134.00	-135.00	-133.90
Jun	-134.80	-135.80	-134.70
Aug	-135.60	-136.60	-135.50
Oct	-136.40	-137.40	-136.30
Dec	-137.20	-138.20	-137.10
Feb	-138.00	-139.00	-137.90
Apr	-138.80	-139.80	-138.70
Jun	-139.60	-140.60	-139.50
Aug	-140.40	-141.40	-140.30
Oct	-141.20	-142.20	-141.10
Dec	-142.00	-143.00	-141.90
Feb	-142.80	-143.80	-142.70
Apr	-143.60	-144.60	-143.50
Jun	-144.40	-145.40	-144.30
Aug	-145.20	-146.20	-145.10
Oct	-146.00	-147.00	-145.90
Dec	-146.80	-147.80	-146.70
Feb	-147.60	-148.60	-147.50
Apr	-148.40	-149.40	-148.30
Jun	-149.20	-150.20	-149.10
Aug	-150.00	-151.00	-149.90
Oct	-150.80	-151.80	-150.70
Dec	-151.60	-152.60	-151.50
Feb	-152.40	-153.40	-152.30
Apr	-153.20	-154.20	-153.10
Jun	-154.00	-155.00	-153.90
Aug	-154.80	-155.80	-154.70
Oct	-155.60	-156.60	-155.50
Dec	-156.40	-157.40	-156.30
Feb	-157.20	-158.20	-157.10
Apr	-158.00	-159.00	-157.90
Jun	-158.80	-159.80	-158.70
Aug	-159.60	-160.60	-159.50
Oct	-160.40	-161.40	-160.30
Dec	-161.20	-162.20	-161.10
Feb	-162.00	-163.00	-161.90
Apr	-162.80	-163.80	-162.70
Jun	-163.60	-164.60	-163.50
Aug	-164.40	-165.40	-164.30
Oct	-165.20	-166.20	-165.10
Dec	-166.00	-167.00	-165.90
Feb	-166.80	-167.80	-166.70
Apr	-167.60	-168.60	-167.50
Jun	-168.40	-169.40	-168.30
Aug	-169.20	-170.20	-169.10
Oct	-170.00	-171.00	-169.90
Dec	-170.80	-171.80	-170.70
Feb	-171.60	-172.60	-171.50
Apr	-172.40	-173.40	-172.30
Jun	-173.20	-174.20	-173.10
Aug	-174.00	-175.00	-173.90
Oct	-174.80	-175.80	-174.70
Dec	-175.60	-176.60	-175.50
Feb	-176.40	-177.40	-176.30
Apr	-177.20	-178.20	-177.10</



Spring Value GO round

Wednesday, February 22, 1972 Times News Twin Falls, Idaho



**TABLERITE A GRADE
WHOLE
FRYERS
FRESH**

33¢ Lb.

Tablerite Cut-Up Pan Ready
A GRADE FRYERS Lb. **35¢**

Tablerite Famous
3 LEGGED FRYERS Lb. **37¢**

...COUPON...
IGA
EVAPORATED MILK
(with This Coupon)
7 TALL CANS \$1.00
Coupon Expires 2/27/72

Tablerite Vac Pack
SLICED BACON Pound package. **79¢**

Morrells Pride Boneless Fully Cooked
HAM Lb. **98¢**

IGA ICE CREAM
ALL FLAVORS
1/2 GAL. **69¢**

IGA COOKIES
Oatmeal-Macaroni
Sugar-Chocolate Chip 24 oz. pkg. **49¢**

**IGA Ripe 'n Ragged
Freestone Peaches** 29 oz. can 2 FOR **79¢**

**IGA Fancy
PEAR HALVES** 29 oz. can 2 FOR **79¢**

**IGA Indiv. Wrapped 8 oz. pkg.
AMERICAN CHEESE SLICES** **49¢**

**IGA 46 oz. can
PINEAPPLE JUICE** 3 FOR **\$1.00**

**IGA Fancy
CHUNK TUNA** 7 oz. **39¢**

IGA MAYONNAISE
QUART **59¢**

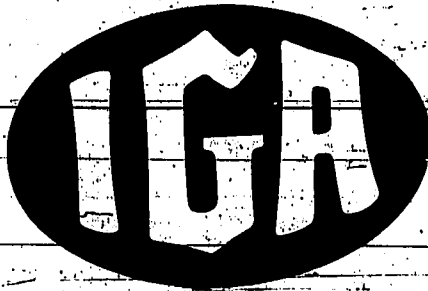
**PICTSWEEP FROZEN
PEAS OR CUT CORN**
Your Choice 10 oz. Pkg. 6 for **\$1.00**

IGA 16 oz.
FRUIT COCKTAIL
OR
IGA PINEAPPLE
12 oz. Crushed or Chunk
Your Choice
4 CANS \$1.00

IGA
Enriched or Sandwich
BREAD Big 22 oz. loaves 3 for **\$1.00**

Eddy's
FRENCH BREAD 3 for **\$1.00**

Meadow Gold
VIVA YOGURT 5 for **\$1.00**



There's a Store Near You!

Buhl — Erb Brothers Market
CASTLEFORD — Castleford Market
DEER — Deer Market
FAIRFIELD — Market Basket
FIRE — Jordan's Market
GOSWOLD — Palmer's IGA
HARRISMAN — Quincey's Market
HARRISON — Don's Market
HAZELTON — Mac's Market
KIMBLEY — Person's Food Mart
OAKLEY — Clark's For Shopping
RICHMOND — Mac's Market
RUPERT — Palmer's IGA
TWIN FALLS — Mary's IGA Market, Denny's IGA Market
WINDHOLE — Cash Grocery

**DOUBLE
GOLD STRIKE
STAMPS**

Wilson's Fancy Slicing
TOMATOES
Lb. **29¢**

Green Crisp
**STALK
CELERY** Bunch **39¢**

Washington Fancy
RED DELICIOUS APPLES 4 lbs. **\$1.00**

**IGA All Purpose
FAMILY FLOUR** 10 lb. Bag **89¢**

**IGA Big 10 oz. Jar
INSTANT COFFEE** **\$1.39**

**IGA Pure
GRAPE JELLY** 2 lb. Jar **59¢**

**IGA Creamy
PEANUT BUTTER** 28 oz. Bottle **89¢**

**IGA Hi-Power
BLEACH** 1/2 Gal. **35¢**

**IGA FRESH
CUCUMBER
CHIPS** 22 oz. Bottle **45¢**

**IGA
FABRIC SOFTENER** Giant 33 oz. **49¢**

**IGA Heavy Duty
ALUMINUM FOIL** 18" Wide Roll **49¢**

**IGA
SOFT
MARGARINE**
3 One Pound Pkg. **\$1.00**

**ZEE
TOWELS**
Ass't, Spice or Print
Big Rolls
4 FOR **\$1.00**

ON ALL PURCHASES OF \$10.00 AND OVER THROUGH 2/27/72 (Where Available)



Get together

MRS. RICHARD Nixon finds something amusing as she chats with Mme Chou En-lai prior to the Chinese Cultural Show at the Great Hall of the People in Peking, China. (UPI)

Salmon River plans announced

SALMON (UPI)—Forest service plans for management of the Middle Fork of the Salmon River for the coming season have been made public. Dick Estes, Wild River Ranger, outlined steps the U.S. Forest Service plans to take in dealing with non-commercial and commercial visitors to the river. He noted the forest service will use its boat crew to make contacts with river visitors at Dagger Falls and Indian Creek on the upper river.

CF chamber informed

GLENN FERRY—The Glenns Ferry Chamber of Commerce met Monday noon at a luncheon at Hansen's Cafe. Nelson Olds, Mountain Home, chief of police, and Jack Streeter, chairman of the Mountain Home Chamber of Commerce, were guest speakers. They explained the TIP program, "turn in a pusher," which the Mountain Home chamber is considering adopting.

James Carpenter, president, was asked to check into all phases of the program to see whether Glenns Ferry chamber wanted to participate. The TIP program is operating in Boise. The industrial development committee has set a special meeting for noon next Tuesday when a Small Business Administration representative will be guest speaker.

Chinese schools follow dictates of revolution

PEKING (UPI)—The building is brick, two stories high. Its dark, unadorned hallways recall the prison-like corridors in painting to the pupils. The most older, big-city American schools.

But a visit to Peking's Secondary School No. 28 revealed few other similarities to the U.S. system of education. A trip to the school was arranged for some of the reporters covering the President's trip to China. It probably was better than most Chinese secondary schools, but the methods of instruction showed that the typical education close by follows the dictates of the cultural revolution. The classroom material—like the old McGuffey's reader—stressed the virtues of the society.

A young Chinese girl with braided hair, a red plaid shirt and baggy blue pants stood by her desk and recited in clear English: "We love our Chairman Mao—our great leader—the red sun in our hearts day and night." She sat down. Another student, a young man about the same age, repeated what she had said. He pronounced the English words slowly and very carefully.

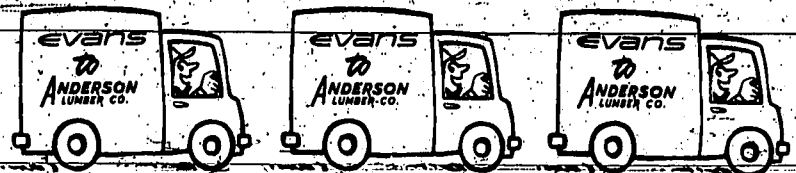
N. Mexico Senator endorses Jackson

By United Press International
Sen. Clinton P. Anderson of New Mexico today endorsed Sen. Henry M. Jackson of Washington for the Democratic presidential nomination. In a letter to party officials in New Mexico, Anderson said, "The candidate we nominate to head the ticket at the Democratic convention must be a man who can appeal to a broad spectrum of voters, including our traditional workingman constituency. He must also be the kind of man who can draw solid support from middle-of-the-road voters as well as capture a certain amount of disillusioned Republicans. I firmly believe Sen. Henry M. Jackson of Washington is that man," Anderson concluded.

The theoretical basis guiding our thinking is Marxism-Leninism. Li Shu-ying, 15, was asked what she wants to be when she grows up. "I wish to be a successor to the revolutionary cause of the proletariat. I will do what will be beneficial to the people," she replies.

COME TO CAMP MEETING

FEBRUARY 22 & 23 at 7:45 P.M.
FEBRUARY 23, 24 & 25 at 10:00 A.M.
DR. JOHN KNIGHT—EVANGELISTIC SPEAKER
LEE EVERLETH—A SINGER WITH A SONG
401 Sixth Ave. North, Twin Falls
Sponsored by the CHURCH OF THE NAZARENE
Congregations in Coaling, Jerome, Buhl, Filer, Kimberly, Rupert, Burley and Twin Falls
NURSERY AVAILABLE—CALL 733-2679 FOR INFORMATION



MULTI-TRUCK LOAD VOLUME



PANELING SPECIALS

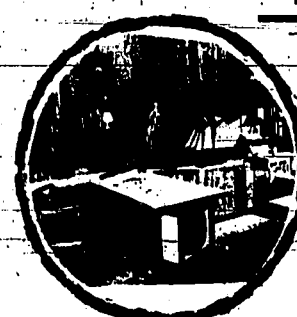
ANDERSON LUMBER'S 15-YARD BUYING-POWER assures you of the best prices on prefinished paneling... and the greatest selection in the Intermountain West. IT'S HOME-IMPROVEMENT TIME... right now... time to get those interior beautification projects going. COME IN WHILE YOU CAN REALLY SAVE!

Evans PREFINISHED PANELING

VALUE SPECIALS

Autumn Plank
4'x8' Reg. \$6.08
SALE per Panel \$4.79

Calif. Laun
4'x8' Reg. \$4.59
SALE per Panel \$3.29



Evans Beautiful 4'x8'

PEACH
Reg. \$5.49 **SALE per Panel \$3.29**

SUPER-DUPER VALUE HERITAGE BIRCH

4'x8'
Reg. \$7.49
SALE per Panel \$3.79

NEW MALAGUARD Pre-finished, Weathered

ROUGH SAWN
4'x8' Reg. \$7.95
SALE per Panel \$5.95

A Large Assortment Pre-Finished MOULDINGS to Match

USE YOUR MASTER CHARGE or BANKAMERICARD

Phone 733-2910



ANDERSON LUMBER CO.

ADDISON AVE. EAST

Panel Adhesive
\$1.29
OPEN ALL DAY SATURDAY

WEDNESDAY THRU SATURDAY
TWO LOCATIONS!

HEY, GIRLS! WE'RE BACK!

FACTORY

WIG SALE

Below Wholesale Prices to The Public and Dealers!
11 A.M. to 8 P.M.

UNBELIEVABLE PRICES!
100% HUMAN HAIR
EUROPEAN QUALITY
MINI FALLS LONG FALLS
LONG, HAND TIED
YOUR CHOICE
\$15.88



DARCY
\$7.00 Ea. Or
2 FOR \$10.00
Reg. \$24.95 ea.



CARY
LONGEST, MOST GORGEOUS
GYPSIES EVER!
Reg. \$39.95
\$12.88

WORLD'S FINEST
WASH 'N WEAR

KANEKALON WIGS

Beautiful, Full and Long
Length. Great for
all occasions!

Prices Start At
\$3.00
Values to \$49.95



VICKEY
SKIN PART, SHERA
ON OR OFF THE FACE
FIRST TIME IN IDAHO
\$16.88
Reg. \$35.00



BEV
"CLASSICAL" MAY BE
CORRECT WITH IT
WINTER SATURDAY
Reg. \$29.95
\$14.88

SPECTACULAR FACTORY
SALE!
CASCADES 100% HUMAN HAIR
\$5.75
WIGLETS **\$3.00**



TERRY
BEAUTIFUL SHAG
3 WIGS IN ONE!
\$15.88
Reg. \$29.95

HOLIDAY INN
ROOM 110
RAMADA INN IN BURLEY
Room 254

City-county planning essential, Rupert told

BY LEE-THÉMAINE
Times-News Writer
RUPERT — Comprehensive city-county planning is essential to qualify for federal funds, a regional state executive said Tuesday night in Rupert.

Mike Wardle, formerly regional director for the state planning agency, stationed in Pocatello, told a group of about 50 agency representatives of the need for planning and outlined the technicalities of city-county cooperation.

Wardle was hired by the city of Boise Tuesday afternoon as new Boise planning administrator, he told the group, explaining why he was somewhat late to the meeting.

Attending the meeting were representatives from the cities of Rupert, Burley, Paul,

Hayburn and the communities of Arco and Minidoka, the Minidoka and Cassia County commissions, utilities, the Soil Conservation Service and its allied Agricultural Stabilization and Conservation Service, and others.

Wayne Hollenbeck, chairman of the Minidoka County commission, presided, introducing Wardle after explaining the purpose of the South Idaho Resource Planning and Development Committee, formed several months ago to direct comprehensive planning over a four-county area.

Hollenbeck said a planning organization within Minidoka County has scheduled completion of its initial survey by March 15, and will then work with the four-county group on

incorporating county ideas into the overall scheme.

Wardle pointed out that regional planning agencies must work closely with community and county groups, which originate the planning concepts, individually for presentation to the regional organization.

Wardle outlined steps of the planning process, including inventorying the problem to determine needed data, analyzing the data when collected, defining goals and objectives, drafting a policy statement and finally publishing and adopting the final plan.

Referring to comprehensive planning for development of sewer service and water supplies in Minidoka County, Wardle said the county's work is a good example of the type of planning needed throughout the four counties.

By completing countywide plans before moving to the regional concept, Wardle said, "you'll save a lot of wasted

time." Counties in Idaho "often get hung up on zoning problems, then can't do any creative planning," Wardle said, if county commissions are not striving for the incorporation of planning along with zoning activities.

He outlined the organization of the Bannock Development Council in Bannock County. BDC involves eight "member units," including the county and seven communities, in a unified planning effort.

Two committees, the citizens' committee to study land use, community resources, natural resources, transportation, recreation and tourism. Each committee's findings are referred back to the council for incorporation in the overall survey.

Vern Haeking, Soil Conservation Service director in Minidoka County, also spoke briefly to emphasize the need of comprehensive planning in Minidoka County as well as the four-county area.



ROSES FOR pretty girls welcomed the resumed Airwest passenger service to Twin Falls Tuesday afternoon. Karen Herd, Miss Idaho, left, and County Commission Chairman William L. Chancey, right, join stewardesses Renate Kolb and Sue Perry, from left, in adorning long stem roses. Also receiving roses but not shown was stewardess Mary Jo Berrier.

Admire flowers

Hughes Airwest resumes partial service in TF

TWIN FALLS — Hughes Airwest resumed partial service Tuesday afternoon at Twin Falls.

At the same time the company announced an expanded 10 flights per day schedule.

The new schedule becomes effective March 15, according to Don R. Cooper, district sales manager for Airwest.

It will include service to 44 cities in the carrier's normal flight schedule, he said, in

addition to 28 now being served. This will complete the second phase of the gradual return to service by Airwest.

Service had been withdrawn from Twin Falls Dec. 15, when a mechanic's strike forced the airline to shut down nearly all operations.

The March 13 schedule is identical to the pre-strike schedule, with the exception of the ski-season special Saturday flights.

"When the leadership of the mechanics' union decides to return its numbers to work, we will be in a position to plan expansions. The first phase of a systemwide build-up occurred Tuesday when the first 28 cities in the system, including Twin Falls, began receiving flights," Cooper said.

The start of service here Tuesday was the result of an agreement made between the company and the Air Line Pilots Association to work regardless of ratification of a contract with the mechanics' union, Cooper said.

Flight schedule for March 13 in Twin Falls as announced Tuesday afternoon includes: Flight 725 arriving from Seattle, Pasco, Lewiston and Boise at 8:25 a.m.; Flight 728 departing for Salt Lake City and Los Angeles at 8:40 a.m.; Flight 722, arriving from Phoenix and

Salt Lake City at 9:30 a.m.; Flight 722, departing for Boise, Portland and Seattle, 9:45 a.m.; Flight 702, arriving from Los Angeles, Las Vegas and Salt Lake City at 1:47 p.m.; Flight 702 departing for Boise, Lewiston, Spokane and Seattle at 2 p.m.; Flight 775 arriving at 8:10 p.m. from Seattle, Portland and Boise, daily except Saturday; Flight 775 departing for Salt Lake City, Las Vegas and Los Angeles, daily except Saturday.

Other flights include 773 arriving from Seattle, Portland and Boise, Saturday only at 9 p.m.; Flight 773 departing for Salt Lake City and Los Angeles at 9:15 p.m., Saturday only; Flight 706 arriving from Los Angeles and Salt Lake City at 8:38 p.m. and Flight 706 departing for Boise, Lewiston, Pasco, Yakima and Seattle at 8:53 p.m.

Traffic counters

RUPERT — The Idaho Highway Department will place traffic counters at strategic locations in downtown Rupert as part of a traffic survey.

Mayor Wendell Johnson said Mel Laraway, assistant traffic engineer for the state department, stationed at Shoshone, conferred with city officials recently on a proposed in-depth traffic survey.

The City Council had voted to seek the survey several weeks ago.

The Idaho State Department of Traffic and Planning, Boise, will assist with the survey, Johnson said. The downtown business district, particularly F and G Streets and Fremont Avenue, will be surveyed.

TF commitment asked on plant

TWIN FALLS — Health officials have asked Twin Falls for commitment on the scope of the proposed secondary treatment plant for upgrading the city's sewage system.

City Manager Jean Millar told the council Tuesday night he would like them to review the report submitted some time ago by the consulting engineering firm on cost estimates and construction proposals. He asked for an opinion from members in two weeks on whether or not Idaho Frozen Foods should be allowed to join the system.

Engineers presented a report on costs with and without the major industrial user, Idaho Frozen Foods. Millar said it would mean a considerable

saving to the firm if it joins the city system rather than building a separate treatment facility. Councilman Michael Gray will meet with officials of the industrial firm to discuss the matter and return an answer by the March 6 meeting.

The city now operates a primary treatment plant in Snake River Canyon but must upgrade it to "secondary treatment under the statewide pollution control program," Millar said. A decision must be made in order to request state and federal funds to meet construction deadlines.

The state had requested engineering and the start of construction by December, 1972, and completion of the conversion by mid 1973, Millar said. If the industry is to be included and a larger system needed, he said, it will probably be necessary to extend the construction deadline to 1976 to obtain necessary federal and state matching funds, he said.

Parking okay

GOODING — The Times-News incorrectly printed that according to the Gooding City Council, operators of Thelma's Beauty Salon could not park on Idaho Street.

Correctly, the council informed Thelma Ferguson that as long as her employees are parking on Idaho Street, which is not proper, they are within the

Teachers, board meet at Rupert

RUPERT — A procedural agreement was presented to trustees of the Minidoka County School District by a faculty negotiating committee Monday night.

The agreement outlines the rules under which negotiation will take place in subsequent sessions, according to David Moller, chairman of the faculty committee.

Other members include Mrs. Barbara Egg, Mrs. Betty Williams, Kest Severe and John Senecal.

Moller said the discussion between trustees and teachers was "free and friendly on each item," but he declined to release details of the items discussed.

Provisions were drawn up for an in-depth study of the procedural agreement, Moller said in a news release. These studies will be conducted jointly by the faculty committee and a committee of trustees.

When these studies are completed, and recommendations will be submitted to the Minidoka County Teachers Association and the board of trustees for formal ratification.

School Supt. Darrell Hatfield and Moller said in a joint statement that the meeting was "very congenial," and that progress is being made to arrive at a workable procedural agreement.

Trustees and teachers' spokesmen agreed to issue periodic news releases on the progress of their negotiations, but declined to discuss the issues in detail.

Officers named for CAA Board

By CHARLOTTE BELL
Times-News writer
JEROME — The South Central Community Action Agency Tri-County Board re-elected officers for the coming year Tuesday.

Officers re-elected were: Royal C. Slotten, Twin Falls, president; Harold Blauer, Cassia County, vice-president; and Mrs. Helen Carter, Twin Falls, secretary.

A request from the Community Improvement Association for assistance in locating fund resources to cover administration and expenses budgets was approved. The action provided approximately \$1,700 to assist it for the next four months.

A request from the Rights For Welfare Mothers Committee for assistance for funds to cover group expenses for approximately \$1,000 was sent to a committee to be evaluated.

A contract with James Hopper, state economic housing specialist, was renewed. The board will try to obtain his services for 50 per cent of his time.

A request from several Minidoka County residents for assistance and to join the board was denied. Slotten said the Community Action Agency could not assist them until they have obtained permission to join the group. If they obtain permission, they may then become part of the tri-county board, Slotten said.

It was reported that the SCGA total budget for the past year was \$376,000. Allocated for Head Start was \$266,000; \$23,000 for senior citizens; and \$87,000 for other projects.

The next meeting of the board will be March 21 at 8 p.m. at the Twin Falls Community Action Center.

No cause of Camas crash determined

HAILEY — No cause for the crash of a Sun Valley Air airplane near Fairfield has been determined so far.

However, investigation into the mishap which killed five persons is continuing, Robert B. Armprist of the Federal Aviation Administration, said today.

Sun Valley Air is scheduled to resume full service Friday, company officials said Tuesday. All flights were suspended after the crash.

After examining parts of the plane, which were removed from the crash scene and taken to the air line's hangar here, investigators said Tuesday there were no indications of foul play but that a fire of undetermined origin caused the left wing and the engine of the craft to drop off before it plunged to earth.

Pinpointing the definite cause is expected to require "some time," according to Armprist.

NFO plans drive

BURLEY — Fifteen members of Twin Falls County chapter of National Farmers' Organization met Tuesday night to plan a membership drive for eastern Twin Falls County.

The group also decided to give its support to Kim Stofferhan,

candidate for the U.S. Senate from South Dakota, as a farm man who would represent farmers in Congress.

Date and place of the next meeting will be announced after next week's membership drive has begun, according to Alvie Johnson, president.

Burley LID given nod

BY GEORGIA LAYTON
Times-News writer

BURLEY — The Burley City Council Tuesday night approved the formation of a local improvement district to enlarge offstreet downtown parking.

Grant Fillmore and Dr. Hammond Hoggan, representing the Burley Offstreet Parking Co., requested approval of the LID to provide offstreet parking for all downtown businesses.

The parking company represents 25 per cent of downtown businessmen. The appraised value of its property used for parking is \$74,000.

The district's area would extend from 11th Street to 14th Street and from Hannan Avenue to Millard Avenue. Signatures of 60 per cent of the property owners in the proposed district are necessary for formation of the LID.

The district would raise \$250,000 to absorb the Burley Offstreet Parking Co. and buy \$190,000 worth of property. The remainder would apply to improvements and meters. The

city will then run the parking lots.

City Atty. William Parsons was asked to draw up specifications for resurfacing 17 blocks of Burley streets and other repairs to be let out on bids.

Max Kidd headed a delegation of citizens from the South Berkley Avenue area to discuss flooding and drainage problems in the new housing development. No preparations for drainage were made when the housing project was started, and Kidd requested formation of a LID to install storm sewers.

The council recommended the city engineering department examine the problem and suggest what should be done.

The council voted to pay half of the rent and utilities for the rest of this year for the Senior Citizens Group of Burley. The group is presently using the VFW hall. The cost was estimated at \$25 to \$35 a month.

A new ordinance must be enacted March 6 for Burley to allow a private concern to collect the city's residential and commercial refuse.

SV council hears plans

SUN VALLEY — Tax valuation and provisions for Elkhorn are two main concerns of Sun Valley property owners, a representative of an owner's association said Monday.

Toti Wardle, a director of the Sun Valley Residential Area Association, briefed the Sun Valley City Council on the group's plans and projects. He said that the association represents about 380 lot and condominium owners and has been in existence for several years, but only has become viable in the last year.

After the meeting, Wardle said the Sun Valley property owners' association is planning to hire a valuation expert to study the

budget in Blaine County. He told the council that "the average membership is not against the present tax evaluation in Sun Valley."

But he said that "inequities" in tax evaluation do exist in Blaine County as compared to Sun Valley and he termed it "absolutely ridiculous" some of the "property" evaluations outside the city.

The director said that the group received a letter from Del Nicholson, Blaine County assessor, which stated that "all property in Blaine County is not at equitable value." Nicholson advised that the assessor's office was planning to hire a valuation expert to study the

initiated this year, starting with property in the northern part of the county.

Wardle said that under state law each piece of property must be evaluated at least once every five years, and that the law has not been followed in the past. He said that the group hopes that the law will be complied with and that property in the rest of Blaine County will be re-evaluated.

In the hope that taxes in Sun Valley will go down slightly, the director said that the association is also concerned with traffic provisions for the new Elkhorn lot Sun Valley. He said that the association is planning to hire a valuation expert to study the

four times the number of present units in Sun Valley. Initially the development plans to use the existing Dollar Road which routes traffic by the dam, property management office, and across the saddle into Elkhorn. The project does not call for improvement of the county access road into Elkhorn.

South of Ketchikan, for four or five years, Wardle said. The association, Wardle said, recommends that the developers either put major improvements in the existing road or build a new road to Elkhorn lot Sun Valley. Dollars Road now accommodates

Fire razes Jerome farmhouse

JEROME — A tenant house on the Joe Bennett farm southeast of Jerome was destroyed by fire early Tuesday morning.

Don Rupert, rural fire chief, said the house was engulfed with flames when the firemen arrived at 1:30 a.m. The house, which was unoccupied at the time, had an estimated value of \$5,000. The owner, the Bennett family, had been determined to pull the house down but had not yet started work.

Paul City budget up 25 per cent

PAUL — A 25-per-cent increase in the proposed 1973 Paul City budget is more than matched by increasing income. The city of Paul will conduct a public hearing on the 1973 budget of \$82,900 at 8 p.m. March 10 at the city hall.

The \$82,900 budget represents an increase of 25 per cent over the previous budget of \$66,600, according to Mayor Robert Larsen. Income for the city is higher by 27.6 per cent, Larsen said. In 1971, total city revenue was \$79,179.48, an increase over the previous year's total of \$61,992.00.

proposed budget, according to City Clerk Lavana Tibbitts. The largest increase will be the police department, asking \$13,500 compared to \$9,200 last year. Most of this increase will be represented by the purchase of a new police car for the city.

Expenditures by departments: Administration, \$15,250; city buildings, \$1,500; parks and recreation, \$1,000; streets, \$12,500; sewer, \$5,000; domestic water, \$10,000; fire, \$10,000; library, \$1,000; total, \$56,250. The 1973 budget is \$82,900, an increase of \$26,650. The 1972 budget was \$56,250.



Albert Pulling

Gun collector sets Burley talk

BURLEY—Albert Van S. (Pierre) Pulling, writer and gun collector, will speak at 7:30 p.m. Friday, at the Cassia County Historical Society meeting.

The public is invited to hear Pulling, an authority on outdoor subjects who retired from the Idaho State University faculty in 1961 with the title associate professor of biology emeritus. The meeting will be held in the National Hotel.

He is a native of Brooklyn, N. Y., and holds degrees from the New York State College of Forestry and University of Michigan. His memberships include the American Legion, Sons of the American Revolution, Bannock County Sportsman's Association, Wildlife Society, American Association for the Advancement of Science and National Rifle Association.

Pulling has a collection of 113 guns, many of them of historical interest. The oldest gun in the collection is a wheel lock made about 1800 in Germany.

Pulling said he will bring from six to 10 guns of various types to Burley for his talk here. These have historical significance in the exploration and development of Idaho.

"I'm taking specimens from the time of Lewis and Clark through the 19th Century when Idaho was pretty well settled," he said.

His collection includes flintlocks and caplocks, as well as center-fires. "After the Civil War there were early center-fires of which the 1873 Winchester was the commonest when the development of the country speeded up," Pulling noted. One of the most important guns historically, he said, was the Winchester model of 1888.

He noted that many early settlers used shotguns, and added that some of the big buffalo guns were single shot.

Pulling has contributed numerous articles to national gun and rifle journals.

At Idaho State University, Pulling sometimes serves the ROTC program as small arms instructor. He also assists the Police Technology program on firearms matters.

Burley chamber hears solons

BURLEY—Burley Chamber of Commerce members have been advised by Rep. Earnest Hale that the Criminal Code would be voted on today in the house.

The telephone visit with the county legislators in Boise was held during the Monday luncheon meeting.

Sen. Robert Saxvik reported the Hospital Authority Act had passed the senate and the bill concerning rights of 18-year-olds had been defeated. He said legislation was running smoothly at this point and revenue is up this year.

Hale reported the house had passed four driver's education bills. Other topics included community property settlement when one spouse dies, safety code, and the state fire marshal.

Due to a committee meeting, Rep. J. Ward Chatburn was unable to participate in the telephone visit.

In other business chamber members were reminded of the school bond election Feb. 29. The county is seeking a \$3.5 million bond. The polls will be open from 8 a.m. to 6 p.m.

CowBelles will support drives

BURLEY—The Mini-Cassia CowBelles have voted to support several organizations in their fund drives.

Mrs. Clinton Easton, president, said the group will support the Heart Fund; Cancer, March of Dimes, Primary Children's Hospital and the Shriner's Crippled Children's Hospital.

Letters were read at the last meeting, at the home of Mrs. Shirley Estes, from Minico High School and East Minico Junior High School home economics departments expressing their thanks for the gift of beef furnished by the Idaho Beef Council, along with booklets containing recipes on meat cookery.

Mrs. Adeline Beaver gave reports and also read a humorous "Cattle Feeder's Prayer" written by Nelson Gay.

Lunch was served by Mrs. Estes who used Valentine decorations at the table and throughout her home.

Club aids Domestic Gem school Duchess meet set

BURLEY—The Sunshine Social Club announced it has sent a donation to the Idaho State School, Nampa, as a club project.

The club met at the home of Mrs. Erma Quansstrom for dinner and election of officers.

Mrs. Quansstrom was re-elected president and Mrs. LaVeta Montgomery was elected by the group as secretary-treasurer.

The hostess' gift was presented to Mrs. Milmie Anderson who was announced as the guest of honor for the event.

DECLO—The Domestic Duchess Extension Homemakers will meet March 2 at the home of Mrs. John Morgan.

A leader training lesson has been scheduled for the March meeting.

The members have scheduled two cake auctions with proceeds to be used for scholarships.

A fund-raising party was held at the home of Mrs. Carl Christensen.

Mrs. Nelson Taylor was co-hostess for this event.

MAGNAVOX

FACTORY-SPONSORED ANNUAL SALE

KEN'S MAGNAVOX

During this *once-a-year* event, most Magnavox models are substantially price-reduced: Save up to \$151 on Color Stereo Theatres... up to \$101 on fine furniture Color TV... up to \$102 on Stereo consoles... up to \$80 on Stereo Component Systems. Save on Monochrome TV, Tape Recorders and Radios, too. All have the built-in performance and reliability that have made Magnavox a leader in the field of finest quality electronics for over 60 years!



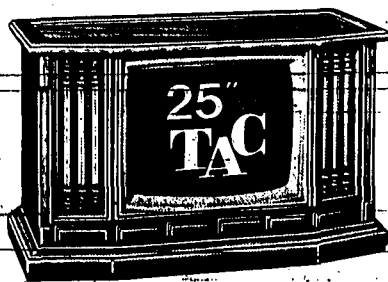
SAVE \$31
NOW \$398

Kick the annoying TV tuning habit... with TAC, the amazing electronic system that automatically keeps flesh tones natural and pictures sharp. There's no more jumping up to adjust controls... and no more green or purple faces! Model 6278, shown on optional mobile pedestal base, also has a Matrix Picture tube for brighter, sharper pictures. Also telescoping dipole antenna.



SAVE \$51
NOW \$448

Space-saving console styling... plus the wonderful convenience of the Magnavox Total Automatic Color System... as well as the brighter, sharper pictures on a Matrix Tube... are all yours to enjoy with Early American styled model 6334! You may also choose from compact and beautiful Contemporary and Mediterranean styling, too. See them all.

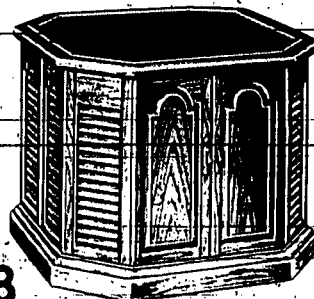


SAVE \$101 Your choice \$598
of 3 styles.

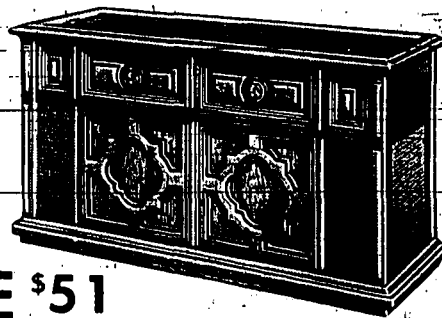
Magnificent to see... on or off! Model 7186, in beautiful Mediterranean Breakfront styling will bring you superb viewing with the Magnavox Total Automatic Color System, and the Matrix Picture Tube... and will enhance your home with fine furniture. The front controls are concealed by a decorative door. Early American and Contemporary styles, too. Also save on deluxe UHF/VHF Remote Control.

SAVE \$51

A stereo in disguise! There's a pull-out 20-Watt EIA music power stereo FM/AM radio-phonograph behind the doors of Spanish drum table model 3463, a six-speaker omnidimensional sound system and record storage! Early American and Contemporary styles, too.



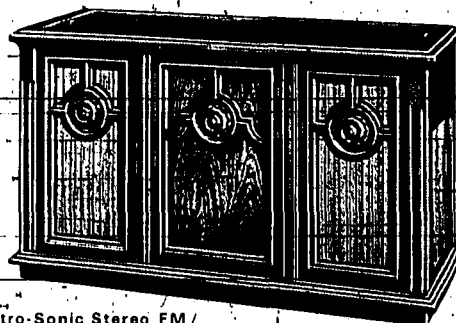
NOW \$298



SAVE \$51

Astro-Sonic Stereo FM/AM Radio-Phonograph... in beautiful Mediterranean styling. Model 3673 will bring you the full beauty of music... with 20-Watts EIA music power, two High-Efficiency 10" Bass Woofers, and two 1,000 Hz. Exponential Horns, plus the Micromatic Player. Modern, Early American, Italian Classic and French Provincial styles, too.

NOW \$328



Astro-Sonic Stereo FM/AM Radio-Phonograph... in beautiful Italian Classic styling. Model 3675 will bring you the full beauty of music... with 20-Watts EIA music power, two High-Efficiency 10" Bass Woofers and two 1,000 Hz. Exponential Horns, plus the Micromatic Player.

SAVE \$51
NOW \$328

KEN'S MAGNAVOX

"HOME ENTERTAINMENT CENTER"

402 MAIN SOUTH

TWIN FALLS

733-2233

Top Quality Pork Loin
LOIN CHOPS **89¢** lb.
RIB CHOPS **79¢** lb.
 Family Pack
PORK CHOPS **75¢** lb.

Fresh Western
OYSTERS
 "Bonus Special!"
10 oz. jar **79¢**

When you read the new labels on Buttreys meat department, you'll find them informative and easy to use. They'll show you:

1. the name of the retail cut — (such as blade pot roast, club steak, or pork chops)
2. the type of meat (such as beef, pork, veal or lamb)
3. the name of the primary cut — this is the large portion of the carcass (also known as the wholesale cut) from which specific retail cuts are taken.
4. the weight of the meat — You are not paying for the wrap or the container — only the meat itself. Strictly controlled and policed by the Bureau of Weights and Measures.

We're hoping the transition to the new labels will be completed very soon. In the meantime, whenever you have a question, ask the meat service staff. He wants to help you be a better meat shopper.

Buttreys **PORK CHART**

RETAIL CUTS OF PORK AND WHERE THEY COME FROM

Top Quality Blade End
 "Pork Loin"
ROAST
 "Bonus Special!"
lb. 69¢

Top Quality Pork Loin
COUNTRY RIBS **69¢** lb.
 Falls Brand Breakfast
 Pork - Beef Seasoned
SAUSAGE - 2 lb. pkg. **89¢**

BONUS SPECIALS

Pacific Pearl, Cocktail
SHRIMP # 1/2 oz. tin **45¢**
 Dole PINEAPPLE-GRAPEFRUIT
DRINK 46 oz. tin **27¢**
 American - 30 gallon
TRASH BAGS 25 ct. pkg. **83¢**
 Del Monte, light, chunk
TUNA # 1/2 6 1/2 oz. **33¢**
 Buttreys Delishus Assorted
ICE CREAM 1/2 Gal. **69¢**

U.S. No. 1
TOMATOES
 "Bonus Special!"

4 pack tray **39¢**

U.S. No. 1 Large Head
CAULIFLOWER
 "Bonus Special!"
HEAD 49¢

Everyday Low Budget Prices

Giant Size 49 oz. **91¢**
 Giant Size 49 oz. **91¢**
 Giant Size 49 oz. **89¢** (special pack 79¢)
 Giant Size 49 oz. **91¢**
 Giant Size 49 oz. **91¢**
 Giant Size 44 oz. **91¢**
 Giant Size 32 oz. **91¢**

BONUS SPECIALS

Meadow Gold Cottage
CHEESE Sampling Sat. 2/26 1 lb. ctn. **29¢**
 Reg. or Special
MORNING MILK 13 oz. tin **16¢**
 Buttreys Delishus Frozen
ORANGE JUICE 12 oz. tin **35¢**
 Nalley's Reg. or Hot
CHILI 15 oz. tin **31¢**
 Festival - Strawberry
PRESERVES 2 lb. jar **59¢**

Buttreys "Delishus" Assort
DANISH
 "Bonus Special!"

Doz. **99¢**
RAISIN PIE 59¢

HARD ROLLS

49¢

Oakley, Murtaugh, Castleford post opening wins in A-4 cage tourney

BURLEY — The Oakley Hornets rallied from behind in the final minute to topple surprisingly tough Rockland 52-50 and Castleford and Murtaugh posted lopsided victories in the first round of the fifth district A-4 basketball tournament Tuesday night.

Bedke hit a three-point play and the Hornets then benefited from a Rockland turnover in the final 15 seconds to post the first victory. Then "Castleford" dropped the Hansen Huskies 54-32 and Murtaugh thumped Raft River 62-41.

Bedke continues Wednesday night with Rockland meeting Hansen at about 5:30 p.m. in the Burley high school gymnasium. Oakley will meet Castleford in the 7 p.m. affair and top-seeded Hagerman comes into play, meeting Murtaugh, in the nightcap. The tournament will have two loser-bracket games and the championship semi-final in a third straight three-game session Thursday night.

Rockland wasn't expected to give Oakley the kind of battle it did and if the Bulldogs hadn't gone a bit cautious in the closing four minutes might have pulled off the upset. The first half was even, winding up at 24-all. But in the third period the Ralphs brothers, using their size, started leading Rockland away as they combined for 35 points. In the third period Rockland moved ahead 40-33 but in the final quarter—stopped—putting the severe pressure on Oakley's zone defense that it had been. Bedke, who hit all his 16 points in the second half, and Ray Severe scored in the final period.

With just under two minutes left Severe hit a field goal and a

free throw to pull Oakley to within one at 50-49. Rockland missed its next attempt and Bedke brought the ball down-court for Oakley. He hit a jumper from the top of the key.

Packers, Cards swap Lane, Anderson in 'harmony' trade

GREEN BAY, Wis. (UPI) — Donny Anderson and MacArthur Lane, two of pro football's best running backs, switched teams Tuesday in a trade designed to restore harmony to the St. Louis Cardinals and Green Bay Packers.

Anderson, who signed six years ago with the Packers for one of the largest bonus contracts in football history, was shipped to the Cardinals and Lane, who drew a one-game suspension last season because of public criticism of the St. Louis ownership, came to the Packers.

Neither player had signed a 1971 contract and each could become a free agent on May 1 if terms are not agreed to.

Anderson, one-half of the Packers' famed "million dollar backfield" of 1966, had a total offense of more than 1,000 yards last season with 757 of them coming on the ground, but he ended up sharing the half-back duties with Dave Hampton and both played second fiddle to rookie John Brockington, who gained 1,105 yards rushing.

A trade of the former Texas

was fouled on the play and converted a three-pointer.

Oakley regained the ball and appeared content to waste the clock. But with about 15 seconds left the Hornets shot and

missed, giving Rockland one last chance. The Bulldogs blew that, however, on a turnover and Oakley ran the clock out.

The other games were over fairly early. Murtaugh showed

no signs of tournament jitters as it exploded away from Raft River in the first half. Robb Wright hit seven points and all the Devil starters chimed in with a field goal each as Murtaugh pushed ahead 19-3 at the end of the first period.

Raft River never was able to get untracked while Murtaugh got hotter in the second period. With John Flynn hitting eight points and Stuart Tolman and Denney two each, Murtaugh exploded the lead to 41-18 at intermission and then strayed resting the starters midway through the third quarter.

It was a turnaround from last week in the Castleford-Hansen game. Castleford had trouble in the closing week of the season, falling from a tie for first to fourth in the conference due to two losses. Meanwhile, Hansen came up with his best game of the year and threw a severe scare into Murtaugh before bowing by two points.

But the routine didn't continue. Hansen managed only 19 points in the first three quarters while Castleford moved ahead by 13 in the first half and controlled the contest throughout the second.

Castleford 54, Hansen 32
Castleford 16 10 10 18
Hansen 10 10 10 12
Totals 54 32
Castleford 16 10 10 18
Hansen 10 10 10 12
Totals 54 32

Murtaugh 62, Raft River 41
Murtaugh 16 16 16 16
Raft River 10 10 10 11
Totals 62 41
Murtaugh 16 16 16 16
Raft River 10 10 10 11
Totals 62 41

Oakley 52, Rockland 50
Oakley 16 16 16 14
Rockland 10 10 10 10
Totals 52 50
Oakley 16 16 16 14
Rockland 10 10 10 10
Totals 52 50

Castleford 54, Hansen 32
Castleford 16 10 10 18
Hansen 10 10 10 12
Totals 54 32
Castleford 16 10 10 18
Hansen 10 10 10 12
Totals 54 32

Murtaugh 62, Raft River 41
Murtaugh 16 16 16 16
Raft River 10 10 10 11
Totals 62 41
Murtaugh 16 16 16 16
Raft River 10 10 10 11
Totals 62 41

Oakley 52, Rockland 50
Oakley 16 16 16 14
Rockland 10 10 10 10
Totals 52 50
Oakley 16 16 16 14
Rockland 10 10 10 10
Totals 52 50

Castleford 54, Hansen 32
Castleford 16 10 10 18
Hansen 10 10 10 12
Totals 54 32
Castleford 16 10 10 18
Hansen 10 10 10 12
Totals 54 32

Murtaugh 62, Raft River 41
Murtaugh 16 16 16 16
Raft River 10 10 10 11
Totals 62 41
Murtaugh 16 16 16 16
Raft River 10 10 10 11
Totals 62 41

Oakley 52, Rockland 50
Oakley 16 16 16 14
Rockland 10 10 10 10
Totals 52 50
Oakley 16 16 16 14
Rockland 10 10 10 10
Totals 52 50

Castleford 54, Hansen 32
Castleford 16 10 10 18
Hansen 10 10 10 12
Totals 54 32
Castleford 16 10 10 18
Hansen 10 10 10 12
Totals 54 32

Murtaugh 62, Raft River 41
Murtaugh 16 16 16 16
Raft River 10 10 10 11
Totals 62 41
Murtaugh 16 16 16 16
Raft River 10 10 10 11
Totals 62 41

Oakley 52, Rockland 50
Oakley 16 16 16 14
Rockland 10 10 10 10
Totals 52 50
Oakley 16 16 16 14
Rockland 10 10 10 10
Totals 52 50

Castleford 54, Hansen 32
Castleford 16 10 10 18
Hansen 10 10 10 12
Totals 54 32
Castleford 16 10 10 18
Hansen 10 10 10 12
Totals 54 32

Murtaugh 62, Raft River 41
Murtaugh 16 16 16 16
Raft River 10 10 10 11
Totals 62 41
Murtaugh 16 16 16 16
Raft River 10 10 10 11
Totals 62 41

Oakley 52, Rockland 50
Oakley 16 16 16 14
Rockland 10 10 10 10
Totals 52 50
Oakley 16 16 16 14
Rockland 10 10 10 10
Totals 52 50

Castleford 54, Hansen 32
Castleford 16 10 10 18
Hansen 10 10 10 12
Totals 54 32
Castleford 16 10 10 18
Hansen 10 10 10 12
Totals 54 32

Murtaugh 62, Raft River 41
Murtaugh 16 16 16 16
Raft River 10 10 10 11
Totals 62 41
Murtaugh 16 16 16 16
Raft River 10 10 10 11
Totals 62 41

Oakley 52, Rockland 50
Oakley 16 16 16 14
Rockland 10 10 10 10
Totals 52 50
Oakley 16 16 16 14
Rockland 10 10 10 10
Totals 52 50

Castleford 54, Hansen 32
Castleford 16 10 10 18
Hansen 10 10 10 12
Totals 54 32
Castleford 16 10 10 18
Hansen 10 10 10 12
Totals 54 32

Murtaugh 62, Raft River 41
Murtaugh 16 16 16 16
Raft River 10 10 10 11
Totals 62 41
Murtaugh 16 16 16 16
Raft River 10 10 10 11
Totals 62 41

Oakley 52, Rockland 50
Oakley 16 16 16 14
Rockland 10 10 10 10
Totals 52 50
Oakley 16 16 16 14
Rockland 10 10 10 10
Totals 52 50

Castleford 54, Hansen 32
Castleford 16 10 10 18
Hansen 10 10 10 12
Totals 54 32
Castleford 16 10 10 18
Hansen 10 10 10 12
Totals 54 32

Murtaugh 62, Raft River 41
Murtaugh 16 16 16 16
Raft River 10 10 10 11
Totals 62 41
Murtaugh 16 16 16 16
Raft River 10 10 10 11
Totals 62 41

Oakley 52, Rockland 50
Oakley 16 16 16 14
Rockland 10 10 10 10
Totals 52 50
Oakley 16 16 16 14
Rockland 10 10 10 10
Totals 52 50

Castleford 54, Hansen 32
Castleford 16 10 10 18
Hansen 10 10 10 12
Totals 54 32
Castleford 16 10 10 18
Hansen 10 10 10 12
Totals 54 32

Bliss in the 6 p.m. opener with

Dietrich playing Carey at 7:30 p.m. and Gooding State going against Rimrock in the night-

cup. The winner of the Gooding State-Rimrock game will meet Camas County in the feature

Friday night after the losers and winners of the first session have played.

The tournament has three games Friday and two Saturday in the Richfield gym, then will shift to Gooding State for the final weekend. Only one team advances to the state tournament.

Gooding State was the only team able to defeat Camas County among the field during the regular season with the Musers taking a 20-point revenge in the season finale.

Richfield rules as the team most likely to succeed if Camas County falls out of the contention. The Tigers have been getting great board work

from two men, Bowers and Paulsen, and those two along with Brown have been providing a lot of points.

Dietrich and Gooding State would have to be the darkhorse selections with winless Bliss given little chance. Carey has shown a few signs of upset capabilities but a lack of consistent scoring has hampered the Panthers all year.

GLOBE'S 1972 ALMANAC FREE FOR THE ASKING!! GLOBE SEED & FEED

PUBLIC AUCTION SAT., FEB. 26th 11:00 A.M. Front and 5th BOISE, IDAHO INDUSTRIAL EQUIPMENT TRUCKS TRAILERS SHOP TOOLS AND EQUIPMENT TERMS CASH LUNCH SERVED

4 TRUCKS
1965 Ford C1-850-534 Gas Engine Automatic Trans 3400 lbs. with 5th wheel 1964 Inter. 304 Engine 5 speed 22M tandem 1963 Inter. 450 Engine 5th direct 3 speed 34M rear tandem 1958 Ford F800, 3 ton single axle 8 yard dump Bell twin 1956 Ford F800, 2 ton 5 speed 1 ton Bed Dodge Truck

COMPRESSORS — GENERATORS — PUMPS
35 CSM Schramm Air Compressor — 105 Air Compressor 3 inch liquid driven Pump — Electric Saws — Compressors

RAMS — PULLEYS — SPROCKETS
Hydraulic Rams — Large group of Sprockets and Chains — Sheave Blocks — Rivers — Conveyor Parts — Pulleys — Pillow Blocks — Bearings

MISCELLANEOUS ITEMS
Clothes Line Posts — Freezers — Jungbluth Headgates — Electric Equipment — Thermo Fax Machine — Fire Extinguisher — Spring — Golf Cart (Electric) — Springs — Scales — 100 ft. Antenna — Lights — Hay Loaders — Pipe Fittings — Electric Wire — Truck Chains — Fuse Boxes

CRAWLER TRACTORS — CARRYALL — FORK LIFT
10-18 Inter. Crawler with blade — 10-18 Inter. Crawler tractor 10-18 Crawler Blade — 4500 lb. Capacity — 10-18 Caterpillar Crawler tractor — 10-18 Caterpillar Crawler tractor — 10-18 Caterpillar loader — 13 Yard Lorraine Scupper — 10,000 lb. Row Rake Lift

SEMI TRAILERS
8 Wheel Semi Low Boy — 40 ft. Utility Trailer with Diesel — Therm King

SHOP EQUIPMENT — TOOLS
Steam Cleaner — Welding Tables — Floor Jacks — Paint Gun — Grinding Wheels — Treaders — Hand Tools — Large Tools

PARTS
Tractor Parts — Jeep Body Frame, Misc. Parts — International Truck Engine and Trans. — Auto Generators — Electric Motors — Auto Parts — Tandem Auto Axles

MISCELLANEOUS EQUIPMENT
Storage Locks — Parts Bin — Seals — Bolts — Automatic Washers — Lawn Mowers — Hot Oil Gun — Oil Gun and Attachments (less motor) — Canvas Scraps — Large Food Mixer

LARGE SALE OF MISC ITEMS
SALE TO BE CONDUCTED IN BUILDING AND ON PAVED LOT. CASH PAY OF SALE: NO ITEMS MOVED FROM SALE LOCATION UNTIL PAID FOR.

Sale Conducted By: DON A. PATTERSON SALES MANAGEMENT & AUCTIONEER P.O. BOX 214 — HAMPA, IDAHO — 466-0007

CLERK: CLARE HOWARD Phone 466-3882 AUCTIONEER: DON A. PATTERSON Phone 466-4009 RATE: \$1.00 PER HOUR Phone 466-3882

NOTICE!! NEW LIFE TRUST, INC. is proud to announce to present and future investors IN THE NEW CITY AT DATLAND, ARIZONA

We now have a local representative. ALL INTERESTED PARTIES CALL 733-4131 FOR FULL INFORMATION.

OF WILSON & JACKSON WITH DALLAS, TEXAS

Idaho State Inspection Station #1 Motor Tune-up • Brakes • Alignment • Balancing 417 Main • 733-8213

Idaho State Inspection Station #1 Motor Tune-up • Brakes • Alignment • Balancing 417 Main • 733-8213

Idaho State Inspection Station #1 Motor Tune-up • Brakes • Alignment • Balancing 417 Main • 733-8213

Idaho State Inspection Station #1 Motor Tune-up • Brakes • Alignment • Balancing 417 Main • 733-8213

Idaho State Inspection Station #1 Motor Tune-up • Brakes • Alignment • Balancing 417 Main • 733-8213

Big Ten sets player hearing

MINNEAPOLIS, Minn. (UPI) — after a two-day investigation a federal judge Tuesday should reaffirm in force, ordered the suspensions of He said that unless the University of Minnesota athletic directors "hear basketball players, Corky testimony from both sides, with Taylor and Ron Behagen lifted, Taylor and Behagen present, unless Big Ten athletic directors and not by Friday evening, the players give the pair a hearing and players' rights to "due process uphold the suspensions, by 6 of law" will have been violated, p.m. Friday Conference in that case, he said, the court Commissioner Wayne Duke would join the Big Ten from said a hearing will be held enforcing the suspensions Thursday.

The two players were suspended by Duke for the rest of the season for their part in a melee that broke up the Minnesota-Ohio State game at Minneapolis Jan. 25. They have missed five games with league-leading Minnesota.

U.S. District Court Judge Earl Larson noted that Big Ten athletic directors and faculty representatives had not held hearings or determined that the suspensions, ordered by Duke

Eat! Long-holding FASTEETH Worry. It takes the worry out of wearing dentures.

HART SCHAFFNER & MARX IS EXCLUSIVELY AT ROPERS



Dress up and relax! — in a double-knit JACK NICKLAUS BLAZER SUIT

by Hart Schaffner & Marx
Jack Nicklaus first got into knits for the free-swinging movement he needed for golf. Now that same iden sparks this Blazer Suit, a double-knit with the casual ease of sportswear and the right-everywhere good looks of a suit. Tailored by none other than Hart Schaffner & Marx in Scioto Cloth™ of 100% Celanese® Fortrel® polyester for cool, unwilling good looks and easy care. Two buttons, flapped lower patch pockets with squared corners. Slightly flared trousers with 3/4 top pockets. Champion's choice of solid colors.

Navv, Bojce, and Camel Brown \$110.00

The Jack Nicklaus double-knit Blazer Sport Coat. Amazingly fine quality knits, finest tailoring, in solids — burgandy, Gold, Olive, Medium Blue, and Dark Green. \$110.00

Great Hart Schaffner & Marx double-knit Blazer Sport Coat. wide variety of smart patterns and colors. Brown, Tan, Blue-black, Navy, Grey, Camel \$155.00

Order new double-knit Hart Schaffner & Marx Sport Coats in new patterns — checks, district checks, block plaids, and stripes \$110.00 & \$120.00

Matching Hart Schaffner & Marx double-knit Slacks \$30.00, \$32.50 & \$35.00

YOU GET MORE DOUBLE-KNIT SUITS, SPORT COATS, TOP COATS, JACKETS AND SLACKS AT ROPERS. IN A WIDE RANGE OF MODEST, MEDIUM AND BETTER PRICES.

ROPER'S

ROPER'S

ROPER'S

ROPER'S

ROPER'S

Knothole schedule

TWIN FALLS — Twin Falls Knothole Basketball schedule for Saturday have been announced.

Sixth grade games will be played at Twin Falls High School. Game times are:
Jaguars, 8 a.m.; Ticker's Tornados vs. Dottie's Dribbles, 8 a.m.; Hater's Hotshots vs. Kurt's Killers, 9 a.m.; Everett's Golden Eagles vs. Craven's Creators, 9 a.m.; Dottie's Dribbles vs. Sweet's Swishers, 10 a.m.

Seventh grade games will be played at Twin Falls High School. Game times are:
Angels vs. Shockley's Shockers, 11 a.m.; Maudlin's Maulers vs. Hater's Hotshots, 12 noon; Kimberly's Kops vs. Meyerhoff's Mustangs, 1 p.m.; Dillon's Dunkers vs. Oyen's Indians, 1 p.m.

Eighth grade games will be played at Robert Stuart Junior High School. Game times are:
Rosenau's Raiders vs. Lutheran, 8 a.m.; Newell's Cools vs. Johnson's Jackrabbits, 9 a.m.; Harrison's Heroes vs. Cooke's Cougars, 9 a.m.; Turner's Twisters draw a bye this week.

Fourth grade games will be played at Robert Stuart Junior High School. Times of play are:
Tom's Team vs. Lutheran, 10 a.m.; Bernard's Bombers vs. Boyd's Bulldogs, 11 a.m.; Cappel's Cougars vs. Cado's Raiders, 11 a.m.; Tucker's Torpedoes vs. Everett's Eagles, 11 a.m.

"Sparks" Sparkler vs. Pettigill's Panthers, 12 noon; Markle's Mustangs vs. Bradley's Bulldogs, 12 noon; Brize's Sizzlers vs. Farmer's Creeps, 1 p.m.; Schwartz's Super Stars vs. Wadsworth's Warriors, 1 p.m.

This is the last week of scheduled games. Teams finishing in the top four should be prepared to play tie breaking games Monday and Tuesday after school.

GLENN FERRY — Francisco Ferrer, Brazil, will speak at the 4-H kick-off dinner at 1:30 p.m. Sunday at the Veteran's Memorial Hall.

Nell Heimick, Mayfield, will serve as master of ceremonies. All new 4-H clubs will receive their charters during the meeting and all leaders who have completed their year will receive a certificate or a seal. Each organization which has given trophies and/or scholarships or other awards for three, six, nine or 12 years, will receive a recognition certificate for the first three years and a seal to affix to the certificate for each three years after that.



COMING ENTERTAINMENT!!

Feb. 22 to Mar. 2
PONCI
Mar. 3 to 16
ROY DRISK
Mar. 17 to 26
LITTLE
Mar. 28 to Apr. 2
JO ANN JORDAN
Twin Falls Entertainment
Twin Falls, Idaho

Shelby's

DELI
POOR BOY'S
39¢
ea
Twin Falls Only

SHELBY
A GRADE
3 LEGGED
FRYERS
37¢
lb

DOUBLE STAMPS

On a **\$20.00**
or more purchase

A GRADE
CUT UP
FRYERS

35¢
LB.

"A" GRADE OPOCO PRIME
HEN
TURKEYS

8-12 Lbs.
39¢
LB.

TURKEY BURGER
FRESH GROUND
39¢
lb

ROAST BONELESS CHUCK WAGON U.S.D.A. CHOICE 89¢ lb	ROAST BONELESS CROSS RIB U.S.D.A. CHOICE 99¢ lb
STEAK BONELESS RANCH U.S.D.A. CHOICE \$1.09 lb	STEAK ROUND BONE SWISS U.S.D.A. CHOICE 98¢ lb
STEW BEEF BONELESS U.S.D.A. CHOICE 98¢ lb	BACON SLICED BAR-S 1 LB. PKG. 79¢
DAK HAM CHOPPED, DANISH, IMPORTED 1 LB. TIN 79¢ lb	TAMALES LYNN WILSON 8 PACK 89¢
CHIPPED MEATS BODDIE 3 OZ. 39¢	WIENERS BANNOCK BRAND 2 LB. BAG \$1.29
SAUSAGE LINKS NEW FOX RIVER VALLEY 12 OZ. PKG. 79¢	SAUSAGE ROLLS NEW FOX RIVER VALLEY 1 LB. PKG. 89¢
SILVER SMELTS 35¢ lb	FILLETS TURBOT FISH GREEN LAND 59¢ lb

DASH 60¢ OFF \$3.99	OREO COOKIES 15 OZ. PKG. 53¢	AMERICAN BEAUTY NOODLES 40 OZ. 79¢	SCHILLING PEPPER 4 OZ. 53¢
----------------------------	-------------------------------------	---	-----------------------------------

LIBBY'S FANTASTIC BUYS

LIBBY'S 303 SIZE FRUIT COCKTAIL 4 FOR \$1.00	LIBBY'S 303 SIZE PEARS 4 FOR \$1.00	LIBBY'S 303 SIZE PEACHES 4 FOR \$1.00
LIBBY'S BUTTER BEANS 5 FOR \$1.00	LIBBY'S CREAM or KERNEL CORN 5 FOR \$1.00	LIBBY'S DICED, SHOESTRING, CUT BEETS 6 FOR \$1.00
LIBBY'S 303 SIZE PEAS 5 FOR \$1.00	LIBBY'S CUT GREEN 303 SIZE BEANS 5 FOR \$1.00	LIBBY'S 46 OZ. SIZE TOMATO JUICE 3 FOR \$1.00

FROZEN FOODS

GRAPE JUICE MCP 6 OZ. CANS 7 FOR \$1.00	JENOS PIZZA HAMBURGER, CHEESE, SAUSAGE 59¢
--	--

FRESH BAKERY

DUTCH APPLE PIES 69^c ea	GERMAN CHOCOLATE CAKE 2 layer ... 99^c
RAISIN BREAD 4 loaves \$1⁰⁰	

NON FOODS

Mennen	
BABY MAGIC	
Reg. \$1.29	79¢
NOW	
& J	
BABY POWDER	
Reg. \$1.29	87¢
NOW	
.....	
HAWAIIAN	
MUU MUUS	
\$3.99	
	each

FRESH CRISP RADISHES MILD GREEN ONIONS BUNCH 10¢	FIRM SLICER CUKES EACH 10¢
--	---

FRESH FLORIDA CORN 4 LARGE EARS 49¢

NAVEL ORANGES
LARGE CALIF.
8 LBS.
\$1.00

COUPON GIANT CHEER
69¢ WITH COUPON
W/OUT **84¢**
COUPON EXPIRES MARCH 1, 1972

INSTANT COFFEE
TASTERS CHOICE 4 OZ.
99¢

PAPER TOWELS
ZEE JUMBO 4 FOR
\$1.00

TOILET TISSUE
ZEE 2 ROLL PKG. 6 FOR
\$1.00

COFFEE CREAMER
SEGO 16 OZ.
69¢

HEINZ BABY FOOD
STRAINED **9¢**

THRILL
KING SIZE
57¢
W/OUT 82¢

Leaders forum planned

KING HILL — Mrs. Marilyn Jordan, Elmore County home extension agent, announced today the Western Regional Leaders Forum will be conducted March 9-13 in Boise. The forum is a four-day event for 4-H leaders in Elmore County are urged to attend. Registration will begin on March 9 at the Rodeway Inn lobby. At 1 p.m., Dr. John F. Gilligan, University of Idaho, will address the delegates. Sessions March 10 include: 4-H Extension, 4-H Leadership, 4-H Future, 4-H Community Service, 4-H Recreation, 4-H Youth Development, extension service, Dr. John Gilligan, and Gloria Johnson, recreation leader from Southern Oregon College. On March 11, Howard Tankersley of the University of Idaho will speak on "Youth and the Community" in the afternoon group sessions. No meetings are scheduled for Sunday morning.

Auction Calendar

Contact the Times-News for complete details. For one of your farm sale, hand bills, newspaper coverage (over 70,000 readers) in Magic Valley advance planning. All at one special low rate. Every sale listed in this Farm Calendar for 10 days before sale.

- FEBRUARY 23
OLEN TURNER, GOODING
Auctioneers: Warr, Eilers, Wall & Messersmith
- FEBRUARY 23
LIDON ANDERSON
Auctioneers: Warr, Eilers, Wall & Messersmith
- FEBRUARY 24
BILLY MCCOY, JEROME
Auctioneers: Warr, Eilers, Wall & Messersmith
- FEBRUARY 25
J & J
Auctioneers: Warr, Eilers, Wall & Messersmith
- FEBRUARY 25
ALVIN ROBERTS, BUHL
Auctioneers: Warr, Eilers, Wall & Messersmith
- FEBRUARY 26
INDUSTRIAL EQUIPMENT SALE, BOISE
Auctioneers: Don Patterson & Kaye Wall
- FEBRUARY 28
HAROLD & DEBRA ESTES, WENDELL
Auctioneers: Warr, Eilers, Wall & Messersmith
- FEBRUARY 28
JOHN AND LAURA PRILUCK
Auctioneers: Warr, Eilers, Wall & Messersmith
- FEBRUARY 29
DON McDONALD, EDEN
Auctioneers: Warr, Eilers, Wall & Messersmith
- FEBRUARY 29
HENRY GROSSMAN, RUPERT
Auctioneers: Warr, Eilers, Wall & Messersmith

- MARCH 1
LAVARR & KAY HANSEN
Auctioneers: Warr, Eilers, Wall & Messersmith
- MARCH 2
EARL HALL, HAZELTON
Auctioneers: Warr, Eilers, Wall & Messersmith
- MARCH 2
H. HARRISON, BUHL
Auctioneers: Warr, Eilers, Wall & Messersmith
- MARCH 2
BILL LOGAN, WENDELL
Auctioneers: Warr, Eilers, Wall & Messersmith
- MARCH 3
ED. BROWN, EILER
Auctioneers: Warr, Eilers, Wall & Messersmith
- MARCH 3
GERALD SCHNEIDER, PAUL
Auctioneers: Warr, Eilers, Wall & Messersmith
- MARCH 4
DON & HELEN LOPEZ
Auctioneers: Warr, Eilers, Wall & Messersmith
- MARCH 4
ALV'S GROCERY, RUPERT
Auctioneers: Warr, Eilers, Wall & Messersmith
- MARCH 5
PAUL HART, EILER
Auctioneers: Warr, Eilers, Wall & Messersmith

Autos For Sale
HEISEN
Vol-Mercury Dealer
FOR 4 DOOR

NOV OR 1972
GM SPORT COUPE
 fully equipped including
 special deluxe interior, 100%
 silk carpeting, special de-
 signed dash and vinyl, white-
 ribbed sporty styling, for
 available in your choice at
 the mdp.

\$2390

OMET KITTEN.

built on a 103 inch wheel
diameter, 36.9 feet, easy to
load/unload. Comfortable
with an economical stand-
ing, an array of spring
loading, 100% nylon match
ing, electric pipers, deluxe

\$21.95

BRAND NEW 1972 MERCURY MONTEREY. 2 door hardtop, light blue, white vinyl roof, black side moldings, 16" wheels, with 2 brake power steering, front door, telescopic tilt transmittance, white wall 15" x 13.5" tires, front bumper guard, chrome wheel covers, 16" wheels, AM radio, protective body tie moldings, limited glass, deluxe wheel covers, this car is equipped just right.

Call 5182 Thesien Price \$4288
Call Merlin Askew 33a 7511

1970 MERCURY COUGAR
2 door hardtop, America's sexiest sport car, light blue, beautiful metal, chrome wheel covers, 16" wheels, front door, telescopic tilt transmittance, white wall 15" x 13.5" tires, front bumper guard, chrome wheel covers, AM radio, protective body tie moldings, limited glass, deluxe wheel covers, this car is equipped just right.

Call 5182 Thesien Price \$4288
Call Merlin Askew 33a 7511

1971 FORD RANCHERO 500
Metallic gold in color. 22,000 actual
miles, excellent tires. V-8 engine, auto-
matic transmission, power steering.
Call Martin Askew 536-2311

THEISEN PRICED . . . SAVE
Call Louis Silman 733-3119

1966 CHEVROLET BISCAYNE
2 door, bright red inside and out.
Standard transmission with 6 speed.
This car is one of a kind.
See this one.

THEISEN PRICED . . . SAVE

1970 MERCURY MONTEGO
MX, 4 door sedan, beautiful light
yellow, dark green top, equipped with
radio including trouble free factory
conditioning, 70 regular rate 40
cyls, power, steering, wall to wall
carpeting, all nylon interior it's truly
a nice car

THEISEN PRICED \$2380
Call Dave Gietzen 733-7889

1967 OLDS TORONADO
Sultana white, maroon interior, loaded
with everything including new
luxury plus, local one owner, new
car trade.

THEISEN PRICED \$1480
Call Merlin Askew 536-2511

1970 GMC 4-TON

1970 MERCURY MARQUIS
4 door sedan, burnt mahogany with
brown vinyl top; beautiful matching
interior. As sold brand new, low mil-
age, full power and air conditioning,
radial tires, you must see it - one to
appreciate its quality.

THEISEN PRICED SAVE \$2000

1968 LINCOLN Continental
4 door sedan, this older luxury car has
been cared for like you wouldn't be-
lieve, runs like a new one. Looks ex-

THEISEN PRICED . . . \$AVE
Call Larry Arbaugh 733 449

1550 CORVAIR
Good trans 3rd year, automatic transmission.
THEISEN PRICED . . . \$188

1964 CHEVROLET BEL AIR
4 door sedan, white with red interior, as clean as older car, you'll ever see, runs good, looks good. Unusually good.
THEISEN PRICED . . . \$680

1967 CADILLAC COUPE DEVILLE
This fine luxury car is finished in a beautiful turquoise with white vinyl top, matching turquoise logic interior.

THEISEN PRICED '75 \$950

1967 PONTIAC TEMPEST
Custom Sprint, this sharp little 2-door hardtop is finished in unmarred all-pearl finish, black vinyl interior, bucket seats, 3 speed on the floor, overhead cam-4 cylinder engine, excellent condition.

THEISEN PRICED '1295

Call Dave Ditsen 733-7898

1967 CHEVROLET COUPE
Malibu station wagon, beautiful turquoise exterior, all vinyl interior, 260 c.i. V-8 engine, standard transmission, luggage rack, excellent economy.

THEISEN PRICED '993

[illegible]



YOUR SYMBOL OF LOWER PRICES HIGHER QUALITY

LOCATED WITH BUTTREY FOODS
BLU LAKES SHOPPING CENTER
Open 9-9 Mon. - Sat. 10-7 Sunday
Ad Prices Effective Feb. 23 - 26, 1972

OSCO DRUG HAS LOW
Prescription Prices Too!
You can see Osco's Low
Prices for Yourself.
They're Displayed
for your convenience on a large
yellow sign in
our pharmacy
or Call 733-0343



The Proof is in the Prices!

STEELHEAD
or Salmon

Rods-Reels

Many Famous Brands
From Which to Choose
• Garcia, Wright McGill,
Southbend, Shakespeare,
and many others.

**10%
OFF**

All Brands
All Models

Alberto
For Brunettes

ONLY

Shampoo In
Hair Color
Reg. \$1.97

\$1.19



Protein
21
SHAMPOO

Regular, Dry, Oily
14 oz. Reg. \$1.97

\$1.29



THERMOS
Quart Size

VACUUM
BOTTLE

With Bale Handle
Reg. \$2.69

\$1.69



Eagle Plastics

SHOWER
CADDY

Mounts Over Your Shower Pipe
Puts All Of Your Shower
Needs At Your Fingertips

Reg. 89¢

59¢



New Hair Care Discovery



ALBERTO
BALSAM

8 oz. Size
Reg. \$1.37

88¢

OGILVIE
HOME
PERMANENT

With Free 3 oz.
Shampoo

Extra Body
Reg. \$2.75

Better Body
Reg. \$2.50

\$1.79

\$1.59



Close-up

CLOSE-UP
TOOTHPASTE

4.6 Oz. Size.
Reg. 79¢
NOW ONLY!...

53¢

New Formula
MR. BUBBLE
Bubble Bath
12 oz. Reg. 49¢

29¢

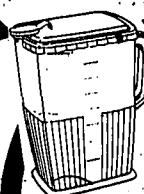


New From F.D.S.
Underarm

Anti-Perspirant

7 oz. Size Reg. \$1.37

NOW ONLY!... **79¢**



1 Gallon
POLY
DECANTER

Measured to 1 gallon,
with lid, pour spout.

Reg. 89¢

49¢



4 Quart
Plastic

UTILITY PAIL

Reg. 29¢

13¢

TRIPLE PACK
CRACKER
JACK

REG. 29¢

21¢

Serle Labs
14 oz.

METAMUCIL

Laxative
Reg. \$2.97

\$1.99



3 1/2
Gallon

JERRY CAN

Red or Green
Heavy polypropylene
Reg. \$1.88

\$1.19

10# Bag

KITTY
KARE

Cat Box Absorbent

Reg. 69¢

39¢



29¢

WHITMAN
COLORING
BOOKS

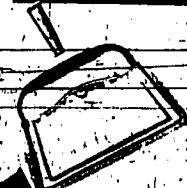
10¢



COVERED
DUST
PAN

REG. 69¢

49¢



3 COVERED SAUCE PAN
CORNING TRIO

Reg. \$19.95

\$9.99

1 QT.
1 1/2 QT.
1 3/4 QT.



Mission
TOILET
SEAT

Assorted Colors
Reg. \$3.77

\$2.69

20 Gallon Galvanized
TRASH
CANS

Reg. \$2.59

\$1.97

