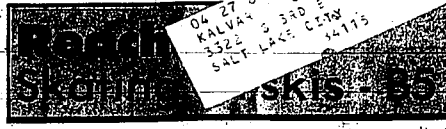


Inside today

Top stories of 1985 - A3

His hobby horses heavyweights - B1



# The Times-News

Copyright © 1985 Hager Valley Newspapers Inc. 25¢

80th year, No. 264

Twin Falls, Idaho

Monday, December 30, 1985

## Tax breaks in limbo

By JERRY ESTILL  
The Associated Press

WASHINGTON — American taxpayers — individuals and businesses alike — lose a variety of tax breaks at midnight Tuesday, but may get some of them back when Congress returns in a more deliberative atmosphere next month.

Among the tax provisions assigned to limbo when the House and Senate failed to agree during the final hectic hours of their 1985 session are credits for installing energy-saving items such as 20 percent floor deductions for vanpooling and research and development credits for businesses.

The House version of a bill to keep the present tax structure essentially intact until March 1 is continued a handful of provisions that Senate negotiators declined to accept. Most of the extensions were contained in slightly differing legislation approved by the House Ways and Means Committee and the Senate Finance Committee, but not specifically considered on the floor of either chamber.

## South, West lead gains in nation's population

By BRIAN BARGER  
The Associated Press

WASHINGTON — The U.S. population has grown by 12.2 million, or 5.4 percent over the past five years, with Southern and Western states gaining more than 90 percent of the increase, the Census Bureau reported Sunday.

The newly released figures indicate a continuing migratory trend toward the Sun Belt states of the South and West, which began shortly after World War II and picked up dramatically during the 1970s. California maintained its position as the most populous state, with 26,365,000 residents as of last July 1. It was followed by New York, with 17,783,000; Texas, with 16,370,000; Penn-

sylvania, with 11,853,000; and Illinois with 11,535,000. Florida moved into the No. 6 slot since 1980, with 11,366,000, displacing Ohio, with 10,744,000 residents.

Population figures for the country as a whole reached 238,740,000 as of July 1, up from the 228,516,000 people counted in the census on April 1, 1980.

Alaska's estimated population in 1985 was placed at 1,905,000, up from 944,000 counted in the 1980 census.

Alaska continued to be the fastest-growing state, with a 29.7 percent rate of growth over the five-year period. While in 1980 Alaska was the least populated state with 402,000 residents, Wyoming had the least residents in

1985 with 509,000 people. Alaska's population grew to 521,000 people.

Others topping the list of states with the fastest growth rates include Arizona, which grew by 17.2 percent; Nevada, with a 15.9 percent growth rate; Florida with 16.5 percent growth; Texas, growing by 15 percent; Utah with a 12.6 percent rate of growth; Colorado, growing by 11.8 percent; California, with 11.4 percent; New Mexico with 11.3 percent and Georgia with a 9.4 percent growth rate over the past five years.

Five other states — Michigan, Ohio, Iowa, Pennsylvania and West Virginia — and the District of Columbia have lost population since 1980, according to the bureau statistics.

Population in the West as a whole grew by 4,654,000, or 10.8 percent, double the national average, with 11 of the 13 Western states outstripping the national growth rate during the 1980-85 period.

The South as a whole grew by 6,486,000, or 8.6 percent, according to the census statistics. Eight of the 17 Southern states grew faster than the national rate.

The Northeast continued a modest growth rate during the five-year period, with population in the region growing at a 1.5 percent rate, an increase of 724,000.

Population in the Midwest grew by 331,000, or 0.6 percent since 1980, including the decliners in Michigan and Ohio.

## Rome police link strikes by terrorists

By KEVIN COSTELLO  
The Associated Press

ROME — The four Palestinian terrorists who massacred travelers at Leonardo da Vinci airport probably received substantial help from accomplices who were linked to other recent attacks in Rome, police said Sunday.

An Italian newspaper also quoted a military intelligence chief as saying the terrorists were trained in Iran.

During his noon blessing in St. Peter's Square, Pope John Paul II condemned the Friday morning attack in Rome and a near-simultaneous onslaught at Vienna's Schwechat Airport.

Five of the 15 people killed in Rome were Americans. Three suspected terrorists were among the dead. Italian officials said the latest count shows nearly 80 people were injured, 10 seriously.

The youngest person slain, 11-year-old American Natasha Simpson, was to be buried

Monday in Rome after a Roman Catholic funeral. Also killed were four other Americans, three Greeks, two Mexicans, one Algerian and an Italian.

Natasha Simpson was the daughter of Victor Simpson, news editor of The Associated Press bureau in Rome, who was wounded with his nine-year-old son Michael in the attack.

The other Americans killed were: Don Moland, 20, New Port Richey, Fla.; Elena Tomarello, 67, Pittsburgh; Frederick Gage, 29, Madison, Wis.; and John Buonocore, 20, Wilmington, Del.

The Vienna raid killed two bystanders, an Austrian man and an Israeli woman, and one suspected terrorist. The 47 people wounded included two men captured by police and held as terrorists. An Interior Ministry spokesman said Sunday the two would stand trial for murder, but gave no details.

Police in both countries said the terrorists were Palestinian, apparently avenging an Oct. 1 Israeli air strike against Palestine

Liberation Organization headquarters in Tunisia that killed at least 60 people. The terrorists' targets Friday were El Al Israeli airline check-in counters, police said.

In Tripoli, the government of radical Arab leader Moammar Khadafi called the airport assaults "heroic" and "brave actions," the official news agency JANA said. It was Libya's first comment on the attacks.

The surviving terrorist from the Rome attack, Mohammad Sarham, told Domenico Sica, an investigating judge, that he and the three slain gunmen belonged to a PLO faction headed by Abu Nidal. He said the group planned more terrorist actions in Europe, judicial sources said.

Abu Nidal is the assumed name of Sabry al-Banna, a major opponent of PLO leader Yasser Arafat.

Later Sunday, Sica told Sarham he had formally been charged with participating in the massacre, with illegal arms transport and other related charges, the news agency ANSA

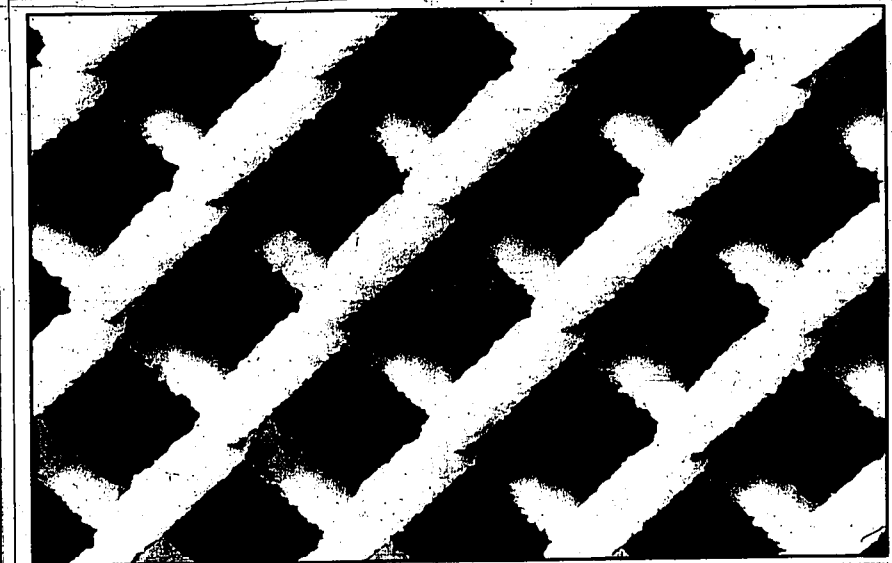
reported. "From the one or two elements we have in hand we hope to discover the support that the terrorists certainly had in Rome," a police official told reporters. The official, who demanded anonymity, said it was "extremely probable" that accomplices supplied the terrorists with guns.

Authorities gave no other details about the purported accomplices, except to say they were believed still at large in Italy.

Other police, also speaking on condition of anonymity, said they believe the accomplices were the same ones who helped carry out two attacks in Rome last September.

Late Sunday, state-run RAI television said experts believe the Israeli security agents killed two terrorists, and Italian police killed the third and wounded the fourth.

Officials said the terrorists probably arrived in Italy by sea, with at least two of them using Moroccan passports with false names.



Frozen fence

The bitter cold of winter can turn even a lowly chain-link fence into an object of beauty. This fence, near Shoshone Falls, is coated in white as a result of mist and spray from the falls collecting on it, then freezing into a layer of solid ice.

## Airport survivors 'lucky'

By LINDA WEINSTEIN  
The Associated Press

Americans who were near the El Al check-in counter at the Rome airport Friday morning when Palestinian terrorists opened fire with grenades and machine guns said they were lucky to survive.

"You just don't know where to go," said Anthony F. Santy, 55, president of an Italian insurance company, who was at the Rome airport on route to Bloomfield, Conn., for his father's funeral.

Santy, who was unhurt and arrived in Bloomfield on Friday, said he saw a duffel bag flying through the air and terrorists fanning their machine guns back and forth.

"I heard either 'Kill them,' or 'Kill them all,' and I laid down. I saw people falling down, blood and all. It all happened in moments." He said the four terrorists — three of whom were killed — appeared to be "either frightened or hopped up (on amphetamines) or something. Full of who knows what? Elation?" In a telephone interview from a Rome hospital, Katherine Goff, 77, of Corona del Mar, Calif., said: "I'm lucky to be alive. I just heard the noise, and I got down on the floor. . . I didn't realize until later that I had a bullet in the leg."

Mrs. Goff had been planning to go on to Switzerland and Yugoslavia, but now plans to return to the United States today. "It had been a wonderful trip, until then," she told the Orange County Register.

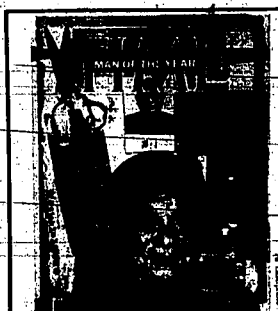
In Chicago, relatives of an injured family said Sunday they were grateful the man and his four children were not badly hurt.

"Everybody was thankful that it wasn't worse," said Tony Swels, a nephew of Michael Swels, 57, of Oak Lawn.

Swels; his wife, Ida; two sons, Sayel, 13, and Said (Sammy), 8; and two daughters, Jennifer, 11, and Julie, 6, were in the coffee shop of Leonardo da Vinci Airport when the attack began.

"One bullet grazed the back of — See LUCKY on Page A2

## Economic reforms bring Deng citation



Deng Xiaoping: 1985 Man of Year

The Associated Press

NEW YORK — Time magazine on Sunday named Chinese leader Deng Xiaoping as its 1985 Man of the Year, crediting him with introducing "sweeping economic reforms which have challenged Marxist orthodoxies and liberated the productive energies of a billion people."

Deng, Time's Man of the Year in 1978, is one of only nine men to be picked more than once.

For the Chinese spirit of balance between yin and yang, Deng's second revolution is an attempt on a monumental scale to blend seemingly irreconcilable elements: State ownership and private property, central planning and competitive markets, political dictatorship and limited economic and cultural freedom, the magazine reported in its Jan. 6 edition.

"Indeed it is almost . . . an attempt to combine Communism and capitalism," Time said. Each year since 1927, when Charles Lindbergh got the honor, Time has picked the person, people or thing that, for better or worse, has most significantly influenced the course of world events in the preceding 12 months, the magazine said.

In choosing the 50th anniversary of the Year, Time's editors considered Mikhail Gorbachev, "the vigorous new Soviet leader"; Nelson Mandela, "the jailed black South African who symbolizes the struggle against apartheid"; Bob Geldof, "the musical fund-raiser for African famine relief"; and "once again, the terrorists."

"But Time editors felt that Deng's reforms 'held more promise for changing the course of history than anything else that occurred in 1985.'"

If the reforms succeed, the editors wrote, "the transformation would have profound and enormous consequences throughout the world. The Soviet Union, which has historically feared the Chinese masses on its southern border, would face a neighbor considerably strengthened by a triumphant heresy."

"Communists everywhere, notably in the Third World, would see an alternative to the failures of Soviet-style Marxism," Time said.

"Many of China's neighbors in the Far East, including Taiwan and South Korea, would find that a political foe had been tamed into a trading partner, while an economic weakling had become a mighty competitor."

Last year's Time Man of the Year was Peter Ueberroth, baseball commissioner and organizer of the 1984 Olympics in Los Angeles.

**Slight pickup for economy**  
BY MARTIN CRUTCHER  
WASHINGTON — The U.S. economy, which slipped slightly in the third quarter, is expected to pick up slightly better next year, many forecasters say.

Briefly

Plane falls apart before crash... WEST VALLEY CITY, Utah (AP) - A light plane apparently fell apart before it crashed on approach to the Salt Lake City International Airport Sunday...

Man treated for wound in leg

TWIN FALLS - Donald Ballard, 39, of Twin Falls, was treated for a gunshot wound in the leg Sunday afternoon following an accidental shooting.

Citizen summit trades views

SEATTLE (AP) - About 400 Americans and Soviets who exchanged views on an intercontinental TV talk show Sunday agreed that they want peace, but clashed on a number of issues, including whether the Soviet Union offers freedom of expression.

Butchers ratify new contract

LOS ANGELES (AP) - Union butchers Sunday ratified a three-year contract, ending a sometimes violent 7 1/2-week walkout against major supermarket chains in Southern California, union officials said.

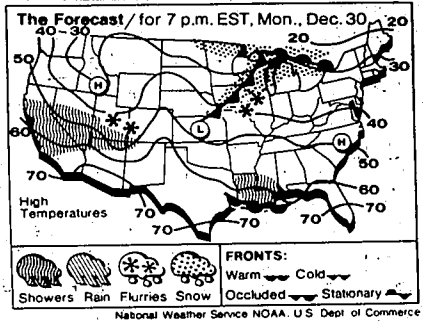
Ice jam floods Oregon homes

ONTARIO, Ore. (AP) - Several families were evacuated from their homes along the Snake River south of Ontario Sunday afternoon as ice jams forced water over the low-lying farm area, a Malheur County sheriff's spokesman said.

Weeks of freezing temperatures have created about 25 miles of ice jams on the Snake from Farewell Bend, northwest of Weiser, Idaho, to just north of the Interstate 84 bridge southeast of Olatuh.

Today's weather Light snow may fall tonight, perhaps

Twin Falls, Burley, Rupert, Jerome and Gooding: Areas of fog and smoke continuing through Tuesday. Otherwise, partly cloudy with light winds. Highs from 15 to 20, Tonight and Tuesday will be mostly cloudy with a chance of light snow.



day, drying again Friday. Warmer. Highs in the 20s to low 30s. Snow is expected in the nation Sunday, a high of 50 degrees was reported at Hollywood, Fla., and Idaho's low of 12 degrees below zero in Malad was cold enough to rank as the coldest reading in the nation.

Wound fatal for Twin Falls boy, 9

TWIN FALLS - A 9-year-old Twin Falls boy, who received a 22-caliber rifle for Christmas, died Sunday morning in St. Alphonsus Regional Medical Center in Boise of an accidental gunshot wound.

Lucky

Swells' head. Another hit him in the leg. Shrapnel from two hand grenades wounded Julie, Sayel and Sunny. Julie was hit by two bullets that broke both her legs. Mrs. Swells was unharmed.

Breaks

charge of laying out regulations to taxpayers. "We don't really have to cope with that much this year," IRS spokesman William Fadley said Friday in a telephone interview.

Economy

dangers of a downturn are likely to intensify in 1987. The year now ending was not kind to the traveling profession. When it began, many economists were expecting growth to be in a range of 3.5 percent to 4 percent, a solid rate that would be strong enough to fund-

The investigation indicated the boy was holding the gun when it discharged, wounding him in the head. Chief Deputy Sheriff Larry Webb of Jerome County said the two were on a rocky point near Vinyard Lake and the boy was seated behind his uncle when the uncle heard the shot. Webb said the death weapon was a miniature rifle that was no more than 24 inches' long, but one

that shoots 22 long shells. He said with a regular sized rifle, the boy probably could not have gotten the gun in a position where it would have fired in his direction.

Here are some of the other items on the congressional-cutting-room floor, for the time being: Targeted jobs tax credits for hiring disadvantaged youth. A business deduction of up to \$5,000 for employer-provided educational assistance.

Tad Haney took his nephew back to the row boat and across the river to obtain help. Scott-Haney was treated at Magic Valley Regional Medical Center and then airlifted to the Boise Hospital where he remained in intensive care until his death Sunday.

National: Max 48, Min 24, Pcp 15, Sat 17, Sun 18, Mon 19, Tue 20, Wed 21, Thu 22, Fri 23, Sat 24, Sun 25, Mon 26, Tue 27, Wed 28, Thu 29, Fri 30, Sat 31, Sun 32, Mon 33, Tue 34, Wed 35, Thu 36, Fri 37, Sat 38, Sun 39, Mon 40, Tue 41, Wed 42, Thu 43, Fri 44, Sat 45, Sun 46, Mon 47, Tue 48, Wed 49, Thu 50, Fri 51, Sat 52, Sun 53, Mon 54, Tue 55, Wed 56, Thu 57, Fri 58, Sat 59, Sun 60, Mon 61, Tue 62, Wed 63, Thu 64, Fri 65, Sat 66, Sun 67, Mon 68, Tue 69, Wed 70, Thu 71, Fri 72, Sat 73, Sun 74, Mon 75, Tue 76, Wed 77, Thu 78, Fri 79, Sat 80, Sun 81, Mon 82, Tue 83, Wed 84, Thu 85, Fri 86, Sat 87, Sun 88, Mon 89, Tue 90, Wed 91, Thu 92, Fri 93, Sat 94, Sun 95, Mon 96, Tue 97, Wed 98, Thu 99, Fri 100.

Idaho road report: BOISE (AP) - Road conditions Sunday evening reported by the Idaho Transportation Department. U.S. 95 - Plummer-Coeur d'Alene, icy spots; Coeur d'Alene-Sandpoint, icy spots; Sandpoint-Canadian border, icy spots; smogging, Higgins-White Bird, icy spots; Grangeville-Winchester, dry; Winchester-Lewiston, icy spots; Lewiston-Steeseville, icy spots; Weiser-New Meadows, icy spots; Marsing-Oregon border, dry; Interstate 90 - Fourth of July Canyon, dry; Boise area, dry; Boise-Glenns Ferry, dry; Bliss-Twin Falls, dry; Twin Falls-Burley, dry, icy spots; Burley-Idaho Falls, dry, icy spots; Idaho Falls-Horseshoe Bend-Dannally, dry, icy spots; broken snow floor: Don-

nelly-New Meadows snow floor, fog; Idaho 21 - Buhl-Blackfoot, icy spots; Idaho City-Lowman, icy spots; broken snow floor; Grandjean-Stanley, icy spots; broken snow floor; U.S. 20 - Mountain Home-Fairfield, icy spots; Fairfield-Carey, broken snow floor; Carey-Arco, broken snow floor; Arco-Idaho Falls - icy spots; Idaho Falls-Ashdon, icy spots; Ashton-Montana border, broken snow floor; U.S. 26 - Idaho Falls-Wyoming border, icy spots; Idaho 51 - Mountain Home-Neveda border, dry, icy spots, fog; U.S. 33 - Nevada border-Twin Falls, dry; Twin Falls-Carey, dry, icy spots; Carey-Arco, broken snow floor; Arco-Salmon, icy spots; Lost Trail Pass, snow floor; U.S. 75 - Shoshone-Ketchum, icy spots; broken snow floor; Idaho 30 - Ratt River-American Falls, icy spots; Idaho Falls-American Falls-Pocatello, icy spots, light fog; Interstate 15 - Utah border-Pocatello, dry, light fog; Pocatello-Idaho Falls, dry, light fog; Idaho Falls-Dubois, icy spots; Monida Pass, icy spots; U.S. 30 - McCammon-Soda Springs, dry, light fog; Soda Springs-Montpelier, dry, light fog; Montpelier-Wyoming border, icy spots, light fog; U.S. 91 - Downey, Preston-Utah border, dry, light fog.

Twin Falls

Table with 4 columns: Day, Max, Min, Precip. Rows include Today's sunrise, Today's sunset, Tomorrow's sunrise, Tomorrow's sunset.

Table with 2 columns: City, High/Low. Lists major cities and their weather forecasts.

Index

Classified C4-8, Comics A6, Dear Abby B3, Opinions A7, Magic Valley B1, Nation A6, Obituaries B3, Reach B1, Sports A3, Valley Life B3, Wollery A4.

Circulation

Subscription Rates: City home delivery: daily, \$1.50 per week; Sunday, 75¢ per week; daily and Sunday, \$1.80 per week.

Jerome-Wendell-Goeding-Hagerman

Advertising rates: Classified ads are taken Monday through Friday from 8 a.m. until 5 p.m. and Saturdays from 8 a.m. until noon.

Juan's Professionals: The Stylist, Lynwood Mall, 733-1749. Heads & Threads, 1703 Addison Ave E., 733-7090.

BILLY GRAHAM WORLDWIDE REPORT GLOBAL CHALLENGE. Tonight witness dramatic moments from 1985, one of the most spectacular years of Billy Graham's ministry.

On the agenda

Here's a list of governmental meetings that are scheduled to take place this week in the Magic Valley. This list is compiled from advance schedules and does not necessarily suggest that you confirm the information by calling the appropriate clerk's office before attending one of these meetings.



# Wave of terrorism top news story during '85

By JOHN BARBOUR  
The Associated Press

The world's headlines in 1985 echoed hope and horror, each event, it seemed, so gripping as to erase what went before.

The top story of the year, as voted by member editors and broadcasters of The Associated Press, was the wave of terrorism that swept the Middle East from the air hijackings to the commandeering of the Italian liner Achille Lauro.

Second in the poll was the summit meeting and the change in leadership of the Soviet Union, and the promise therein.

But these top stories were pressed by natural disasters. A Colombian volcano erupted and left 25,000 dead in the muddy wake of melted snows cascading from the Andes into the valleys below.

No. 4 was the Mexico City earthquake that crushed or trapped at least 7,000 people in masonry tombs.

The fifth top story of the year has been with the world for a while, but it gained momentum in 1985. The AIDS epidemic has claimed 14,000 victims, but its most famous, movie star Rock Hudson, illuminated the insidious powers of the disease that frightened ordinary Americans and electrified the medical community.

From the mountain crash of a Japan airliner that left 520 dead to the tragic loss of 948 American GIs homeward bound for Christmas from keeping the peace in the Sinai, it was a horrific year for air travel. Editors and broadcasters voted the sequence of crashes that took some 2,000 lives the sixth top story of 1985.

The seventh-ranked story was the rescue of famine victims in Africa and the campaign that drew world



Shilte Moslem hijacker leans from cockpit of TWA Flight 847 at Beirut International Airport

attention to their plight — from official government efforts to the chorus of rock stars singing, "We are the world. We are the children." In eighth place was the story

about the nation's troubled farms — the failure of long-held family farms and the problems of the banks that lent them money. It was an irony in the polling that many of the journalists who listed the African famine followed those votes by citing the plight of the American farmer whose bountiful harvests in a hungry world sank him even deeper in debt.

The most recent events around South Africa's racial policies were ranked ninth. The uncovering of American spies and the defection of a Russian was ranked 10th.

In this year's poll the others in the top 20 were:

11. The U.S. economy — inflation continues low as Congress and administration wrestle with imports, deficits and tax revision.
12. U.S. weather — Hurricanes buffet Louisiana, skim the East Coast, trigger floods in Virginia and West Virginia, leaving at least 50 dead and driving 22,000 from their homes.
13. Body buried in Brazil identified as Nazi war criminal Josef Mengele.
14. Artificial hearts — William Scherler lives and Jack Burcham dies. After eight transplants this year, doctors consider new strategies.
15. The president is operated on for cancer.
16. Drugs in major league sports. The Pittsburgh trial, Commissioner Ueberroth calls for stronger measures in baseball.
17. The MOVE firebombing in Philadelphia. A neighborhood destroyed in an attempt to evict troublemakers.
18. The space shuttles. They operate on a regular schedule as astronauts repair and fetch satellites, put new ones up and experiment with building a permanent space station.
19. Billion-dollar mergers and buyouts in corporate America.

20. Brussels soccer riot leaves 39 dead; British soccer stadium fire takes 55 lives.

The top story, terrorism, was ranked members of the PLO for a rooted in the Middle East, which continued to seethe in hatred in 1985, and the Egyptian plane erupting here and there in terrorist frustration. The United States and much of the rest of the Western world talked tough and refused to negotiate with hijackers.

In June, TWA Flight 847 out of Athens, bound for Rome, was hijacked with 185 passengers and eight crew members aboard. The plane was forced to fly to Beirut, then Algeria and back to Beirut again, dropping off some of the hostages along the way, most of them women. An American Navy diver aboard was killed.

Thirty-nine Americans were held hostage for 17 days while two Shiite terrorists demanded the release of Reagan and Mikhail Gorbachev for the first time in November, compelling them to meet in the first summit meeting of the superpowers in six years.

The agenda included nuclear arms control, regional disputes and human rights. What was not planned was the men spending more than half of their nearly nine hours together in private meetings with only interpreters present.

When they emerged two days later, Reagan and Gorbachev had reached an agreement to hold two more summits — one in the United States and one in the Soviet Union — over the next two years.

The hijackers returned the ship to Egypt where they were allowed to board an Egyptian jet with two ranking members of the PLO for a trip to Tunisia. Tunisia refused to continue to seethe in hatred in 1985, and the Egyptian plane erupting here and there in terrorist frustration. The United States and much of the rest of the Western world talked tough and refused to negotiate with hijackers.

In June, TWA Flight 847 out of Athens, bound for Rome, was hijacked with 185 passengers and eight crew members aboard. The plane was forced to fly to Beirut, then Algeria and back to Beirut again, dropping off some of the hostages along the way, most of them women. An American Navy diver aboard was killed.

Thirty-nine Americans were held hostage for 17 days while two Shiite terrorists demanded the release of Reagan and Mikhail Gorbachev for the first time in November, compelling them to meet in the first summit meeting of the superpowers in six years.

The agenda included nuclear arms control, regional disputes and human rights. What was not planned was the men spending more than half of their nearly nine hours together in private meetings with only interpreters present.

When they emerged two days later, Reagan and Gorbachev had reached an agreement to hold two more summits — one in the United States and one in the Soviet Union — over the next two years.

In October, six Israeli planes bombed the PLO's liberation Organization headquarters in Tunis, and killing about 60 people in retaliation for the slaying of three Israeli tourists aboard a yacht in Cyprus.

In what looked at first like a chain reaction because it followed so quickly, the Italian luxury liner Achille Lauro and hundreds of passengers were held hostage for two days by a PLO team of four armed men. An American in a wheelchair was killed.

The hijackers returned the ship to Egypt where they were allowed to board an Egyptian jet with two ranking members of the PLO for a trip to Tunisia. Tunisia refused to continue to seethe in hatred in 1985, and the Egyptian plane erupting here and there in terrorist frustration. The United States and much of the rest of the Western world talked tough and refused to negotiate with hijackers.

In June, TWA Flight 847 out of Athens, bound for Rome, was hijacked with 185 passengers and eight crew members aboard. The plane was forced to fly to Beirut, then Algeria and back to Beirut again, dropping off some of the hostages along the way, most of them women. An American Navy diver aboard was killed.

## CITY SANITATION

Parks & Sons (Sanitation Contractors) will be closed on Jan. 1. They will resume work one day behind schedule on Jan. 2. Also working on Saturday, Jan. 4th. Monday, Jan. 6th they will be on schedule.

Thank You,  
Sherry Jeff  
Sanitation Inspector

## Romance led list in 1936

NEW YORK (AP) — This is the 50th year Associated Press members have ranked the top 10 stories.

For a sense of history, here are the results of the first poll in 1936:

1. The British Empire crisis — the Edward VIII-Mrs. Simpson romance.
2. The U.S. political campaign — FDR's second term.
3. The Spanish Civil War.
4. Italy's conquest of Ethiopia.
5. Civil war in labor's ranks — the AFL split by John L. Lewis' aggressive tactics.
6. The U.S. business recovery — coming back from the Depression.
7. Remilitarization of the Rhineland.
8. U.S. drought and floods.
9. Hauptmann's execution — the Lindbergh baby kidnapping case.
10. Development of Dr. Charles Greeley Abbot's steam engine — it operates on solar power.

# Tax, textile lobbies leading spenders

WASHINGTON (AP) — Big-budget battles to preserve major income tax deductions and protect U.S. textiles accounted for the greatest concentration of the millions of dollars spent in lobbying efforts in Congress in 1985.

Topping the most recent spending list issued by the House clerk's office was the Coalition Against Double Taxation Inc., an alliance of labor unions that reported third-quarter lobbying outlays of \$549,477.

The group was not alone in the thus-far successful campaign to retain the federal deductibility of state and local taxes. The tax overhaul bill recently passed by the House and sent to the Senate.

The second highest spender in the latest batch of lobbying reports was the Association for Better New York, bankrolled principally by New York City real estate and banking

interests. This organization, which provided limousine rides and a chartered jet trip for such key House members as Speaker Thomas P. O'Neill, D-Mass., laid out \$561,117 in the July-September period after a \$60,608 start in the second quarter.

The third highest spender in the third quarter was the Fiber, Fabric and Apparel Coalition for Trade, reporting third-quarter outlays of \$484,622 on behalf of legislation to restrict textile product imports.

This coalition of U.S. clothing manufacturers also had an ally in domestic chemical companies, whose Man-Made Fiber Producers Association Inc. spent \$210,241 during the third quarter.

Through September, the two textile groups poured more than \$1.8 million into their 1985 campaign for protectionist legislation, with much

of the money attributed to advertising and public relations. The textile forces won the battle on Capitol Hill but may have lost the war in Washington. Their bill was voted by President Reagan, and Congress is not planning to take override votes until next August.

The latest reports showed that spending in the second quarter reached \$11.05 million, up from \$10.24 million in the first three months.

Incomplete third-quarter reports totaled \$9.36 million — a rate that could make the July-September period the most costly for lobbyists in recent years. First-third-quarter figures and preliminary fourth-quarter totals will not be available until late February.

Even without the late third-quarter reports, lobbyist spending reached \$30.65 million for the first nine months of 1985. This was more than \$2 million ahead of the pace at a similar point in 1983, when spending topped \$43.32 million, a record-year high.

Not only were lobbyists spending more in the third quarter but there were more of them working the hallways of Congress. The House clerk's office counted 7,600 lobbyists on the registration books in the July-September period, an increase of 400 over the previous quarter.

Other big spenders in the latest available quarterly lobbying reports included Common Cause, \$440,146; Sierra Club, \$286,187; Gun Owners of America, Inc., \$263,445; American

Petroleum Institute, \$253,696; Free the Eagle National Citizen's Lobby, \$241,297; U.S. League of Savings Institutions, \$217,611.

Also, National Rifle Association, \$196,337; AFL-CIO, \$170,149; National Education Association, \$163,613; Disabled American Veterans, \$134,622; Solar Energy Industries Association, \$127,241; Audio Recording Rights Coalition, \$124,958; American Federation of State, County and Municipal Employees, \$117,374.

Also, Railway Labor Executives' Association, \$115,428; American Farm Bureau Federation, \$114,963; International Gold Corp. Ltd., \$111,676; United Auto Workers union, \$108,135.

## Burger seeks better pay for judiciary

WASHINGTON (AP) — Most federal judges are under a great financial strain and are struggling to make ends meet, Chief Justice Warren E. Burger said Sunday.

"Although the nation's interest may be served by decreasing government spending, Americans are ill-served by the folly of inadequate judicial pay," Burger said in his annual report on the judiciary.

He blamed inadequate salaries for the resignations of 60 judges since 1970 — more than during the entire preceding 150 years.

Burger said 80 percent of the 553 federal judges polled in a recent survey said they were unable to live on their salaries alone and have to supplement their incomes by depleting savings and investments.

Burger is the top-paid federal judge with an annual salary of \$108,400. The Supreme Court's eight other members are paid \$104,100. The yearly salary of federal appeals court judges is \$83,800. Federal trial judges earn \$78,700 annually.

The chief justice said "salary erosion" due to inflation since 1969 has dropped the pay of federal judges by one-third "in real dollars." He said the average white-collar federal employee's buying power dropped only 4 percent during the same period.

## Soviets target

CAMBRIDGE, Mass. (AP) — About two dozen protesters, including relatives of Soviet dissident Andrei Sakharov, spoke out Sunday against the Soviet invasion of Afghanistan which began six years ago this month.

"It's sad what happened in Afghanistan. The Afghan people should be allowed to live peacefully," Alexei Semenov, Sakharov's stepson, told the group on Cambridge Common.

Other big spenders in the latest available quarterly lobbying reports included Common Cause, \$440,146; Sierra Club, \$286,187; Gun Owners of America, Inc., \$263,445; American

**ORDER FRESH BAKED PIES FOR YOUR HOLIDAY DINNER**

Choose Traditional Pumpkin Pie or go Untraditional With Our 25 Delicious Other Selections.

**FRONTIER PIES RESTAURANT BAKERY**

PIES MUST BE PICKED UP BY TUESDAY, DECEMBER 31 734-9403

598 BLUE LAKES N. IN THE LYNNWOOD

You Are Invited To A NEW YEAR'S EVE PARTY

DOORS OPEN AT 8:30 P.M.

DANCE TO THE MUSIC OF WHISKEY JACK

STARTING AT 9:00 P.M.

PARTY FAVORS & CHAMPAGNE AT MIDNIGHT

**Turf Club**

FALLS AVE. TWIN FALLS

# Blacker's

# 1/2 PRICE SALE

# 6 HOURS ONLY

# 12 NOON TO 6 P.M. JANUARY 1st



# African official fears more famine deaths in coming year

**ADDIS ABABA, Ethiopia** (AP) — tries still on the emergency list. There is a quiet fear in Africa that millions of people again will be haunted by starvation in 1986, despite the massive relief effort this year.

"If an international relief effort is not sustained, we can go back to zero," said Berhane Denessa, deputy director of Ethiopia's Relief and Rehabilitation Commission.

"The same pictures of emaciated and starving people will come back again," he told The Associated Press.

Africa is trying to recover from drought and famine that put 21 of its million tons of emergency food supplies on the U.N. Food and Agriculture Organization's danger list in 1985 and killed perhaps a million people, half of them in Ethiopia.

"The best rains in many years fell throughout Africa this season," ac-

ording to the U.N. Food and Agriculture Organization, the FAO. The rain holds the promise of record harvests in many areas and in 1986 the 21 drought-hit countries will need less than half the food aid they required in 1985, the FAO said.

"The transformation of the drought-stricken countries has been spectacular," said Edouard Souma, director-general of the FAO, in his year-end statement on the Africa food situation.

But Souma warned "Good weather alone will not break the back of hunger in Africa."

He said "another famine could

decline in per capita food production and degradation of the environment, Africa was ripe for such a crisis, he said.

"We were lucky this emergency came at a time of cheap and widespread food surpluses elsewhere," Souma said.

The United Nations said 35 million Africans were "at risk" from famine in 1985. For 1986, the number is 10 million; nearly 6 million of them Ethiopians.

Eight million of Ethiopia's 42 million people were affected at the height of the famine a year ago. The Ethiopian government has said it

will need 1.2 million tons of food aid in the new year, about the same as 1985, for 5.8 million people.

The worst famine areas in Ethiopia had been the northern regions, but the drought has spread to the normally fertile southeast, especially in the Hararge, Bale, Sidamo and Gama Gama regions.

Western aid workers, diplomats and journalists who have visited the southeast say there is serious malnutrition among adults and children, and livestock is dying. Fewer people were affected at the height of the famine a year ago. The Ethiopian government has said it had planned.

# USSR denies arms control violations

**MOSCOW (AP)** — The Soviet Union on Sunday expressed its charges of arms control violations, which Kremlin officials claimed were meant to knock the wind out of the Geneva summit and divert attention from the Soviet nuclear testing moratorium.

The response to arms control allegations in President Reagan's report to Congress last Monday came in a government statement issued by the news agency Tass and at a news conference by the foreign and defense ministries.

Both were part of a stepped up news media campaign devoted to arms control, especially

the test moratorium that expires Tuesday.

Tass issued a stream of reports on the moratorium Sunday, including five in less than an hour. One story said Reagan "maliciously distorted" Soviet policy in a radio address Saturday in hopes of distracting public concern from the issue of nuclear testing.

Reagan's report to Congress was the fourth since 1983 alleging Soviet violations of treaties governing nuclear, chemical, and biological weapons.

The Tass statement called the allegations "slenderous," and added, "The Soviet Union has

# Apartheid opponents victims of auto crash

**JOHANNESBURG, South Africa** (AP) — Two of South Africa's best-known apartheid opponents, activist Molly Blackburn and civil rights lawyer Brian Bishop, died in a car crash, police and Mrs. Blackburn's husband said Sunday.

The two were killed Saturday about two hours after sundown when the car in which they were riding collided head-on with another vehicle, police said.

The driver of the other car, not identified, also was killed.

News of the deaths did not emerge until Sunday.

Mrs. Blackburn's sister and Bishop's wife, also an anti-apartheid activist, were injured, but were considered out of danger in a Port Elizabeth hospital.

The collision came on a road west of the coastal city of Port Elizabeth, about 600 miles south of Johannesburg.

"Although the victims regularly received death threats, there were no indications of foul play, said Mrs. Blackburn's husband, Gavin Blackburn, a physician.

The four were headed toward Port Elizabeth from a black township near Humansdorp, about 50 miles west.

Friends said they had been interviewing blacks arrested recently in South Africa's persistent rioting that has killed about 1,000 people in almost 16 months.

**MAKE YOUR HOLIDAYS "MAGIC"**

**SKI MAGIC MOUNTAIN**

OPEN DEC. 20 - JAN. 5

CLOSED CHRISTMAS-DAY ONLY  
9:30 - 4:00 P.M.

**BUS RUNS DAILY**  
Holiday Pass Available  
**WE HAVE IT ALL!**

- Cafeteria
- Lounge
- Friendly Relaxed Atmosphere

**MAGIC MOUNTAIN**  
Only 45 Min. SE of Twin Falls 735-2527



## Briefly

### Consider children, pope says

**VATICAN CITY (AP)** Pope John Paul II said Sunday that those celebrating the Christmas holidays should also consider the plight of children who lack the joy and peace of Friday's recent attacks in Rome and Vienna, and of all the victims of worldwide violence in 1985.

"Christmas, while it serves the memory of the birth of Christ, must also bring memories of suffering children, threatened by death from hunger, without a home, without love," the pope told children visiting from a local parish.

Among the prayers offered by the visiting faithful from St. Marco Church was a plea for Friday's victims and for the peace and safety in Rome and Vienna, and of all the victims of worldwide violence in 1985.

### American, former student wed

**COPENHAGEN, Denmark (AP)** — American writer and radio personality Garrison Kellor, author of the best selling novel "Lake Wobegon Days," on Sunday married a former Danish exchange student whom he first met 25 years ago in Minnesota.

Kellor, creator of the American Public Radio network show "A Prairie Home Companion," met Ulla Skaerved in 1960 when they were high school classmates at Anoka, Minn., where she spent one year as an exchange student.

The wedding took place in Holte near Copenhagen. After high school, Kellor saw Ms. Skaerved for one week when she revisited Anoka in 1964.

Forty-one years passed before Kellor, 43, saw her again last August at the high school reunion.

"I feel like I have been part of a novel the past four months," said Ms. Skaerved. The couple will reside in St. Paul, Minn.

### Spaniards opposed to NATO

**BARCELONA, Spain (AP)** — Almost half the Spaniards questioned are opposed to Spain's remaining in the North Atlantic Treaty Organization, according to a poll published Sunday.

The poll, published in the independent Barcelona newspaper La Vanguardia, indicated 45 percent opposed Spain's membership in NATO; 42 percent approved such membership, and 23 percent did not answer.

Forty-eight percent of the 1,849 people questioned between Sept. 16 and Dec. 1 defined NATO as a "military bloc." Only 2.5 percent said it was a "political alliance." Eight percent said NATO "is useless."

Spain became the 16th NATO member in 1982, although the armed forces have never been integrated in NATO's military structure.

Prime Minister Felipe Gonzalez said last year his government would respect a 1982 campaign promise and hold a referendum in March or April 1986 on continued membership in NATO.

### Sudan asks aid with debts

**KHARTOUM, Sudan (AP)** — Sudan has asked the United States and Saudi Arabia to help pay \$218 million in debts to the International Monetary Fund, the Sudan News Agency reported Sunday.

The chairman of the ministerial economic committee, as saying Sudan asked America, Saudi Arabia and other "sister and friendly" countries for assistance in paying the debt.

Sudan's foreign debt is \$9 billion. Its annual interest rate payments are about \$900 million.

Economy Minister Awad Abdul-Majeed resigned last week when the Cabinet rejected several of the proposals he had negotiated with the IMF, including a reduction of money supply by 20 to 50 percent, removal of price controls on some commodities, and letting commercial banks, not the government, fix foreign exchange rates.

### Computer system passes test

**PEKING (AP)** — A new computer software system that uses both simplified Chinese characters and traditional complex characters has passed its first test, the state-run Xinhua news agency reported Sunday.

Xinhua said the system, developed by the National Peking Library, was successfully tested Saturday. The system can complete in one minute a complicated editing task that would take an expert 20 days. The library said.

The report said the system, also allowing the Chinese mainland to communicate directly in Chinese characters to other Chinese areas. The system can be used to convert simplified characters used by communist China to the traditional character system used by Taiwan, Hong Kong and Macao.

China adopted a simplified character system in the 1950s to promote literacy. Other Chinese-speaking areas such as Taiwan and Hong Kong continue to use traditional complex characters.

### Karpov says match delayed

**MOSCOW (AP)** — Anatoly Karpov, who lost the World Chess title he held for 10 years to Garry Kasparov in November, said the next World Chess Championship series would be delayed until 1987 because of a busy chess schedule next year.

Karpov did not say in his response to a letter in the newspaper Sovetskaya Respublika how he learned the world title rematch, set for the end of 1986, would be postponed.

Such a decision would have to be taken by the Switzerland-based World Chess Federation, FIDE, which has not as yet made any official announcement of a postponement.

"Karpov, 34, also disclosed that he has asked FIDE President Florencio Campomanes that the February Karpov-Kasparov rematch be held in Leningrad.

### Iranians convict hijackers

**NICOSIA, Cyprus (AP)** — An Iranian court convicted one South Yemeni and acquitted another in the hijacking of a Saudi Arabian jet to Tehran last year, Iran's official Islamic Republic News Agency reported Sunday.

IRNA, monitored in Nicosia, said Saad Saleh Massoudi, 36, was sentenced to 12 years in prison. It identified the man acquitted as Mahmoud Al-Hazvi, 22.

They were charged with disturbing air flight security and creating a state of terror among passengers on a plane bound from Jeddah, Saudi Arabia, to Europe which was forced to fly to Tehran on Nov. 5, 1984, IRNA reported.

### Japan's prime minister raps defense state

**TOKYO (AP)** — Prime Minister Yasuhiro Nakasone said Sunday Japan's defense was "kindergarten level" compared to the United States and the Soviet Union and that something must be done to boost Japanese and world security.

Nakasone spoke at a nationally televised news conference a day after his government approved an austere budget for fiscal 1986. The new budget held down general spending but gave defense a 6.58 percent boost, to \$16.5 billion.

Nakasone said Japan, the world's No. 2 economic power after the United States, spends about 1 percent of its Gross National Product for defense, compared to about 14 percent for the Soviet Union and 6 percent for the United States.

He added, "Japan has come to occupy an important position in the Far East and internationally, and has a responsibility to contribute to world peace and security. We must spend at least the minimal amount necessary to prevent the outbreak of war in our region and aggression against Japan."

### Walesa birth brings cheers

**WARSAW, Poland (AP)** — Lech Walesa told hundreds of chanting Solidarity supporters who gathered Sunday to congratulate him on the birth of his eighth child that he hoped 1986 would "bring us victory."

Walesa spoke following a Roman Catholic Mass at St. Brygida's Church. Several hundred people, chanting "Solidarity" and "Walesa," filled a courtyard outside the rectory to greet the labor leader.

Walesa, wife Bogdana Olszewska said in a telephone interview.

Many people gave Walesa flowers to celebrate the birth Saturday in a Gdansk Hospital of his six-year-old, 6.5-pound baby daughter, Olszewska said.

Walesa said his wife, Danuta, and their daughter "are both feeling great" and should be released from the hospital after the customary seven-day quarantine period. He said he spoke to his wife on the telephone.

Sell it! Buy it!

A Times-News Classified Ad Will fill every need.

**733-0931**

**The Times-News**

THE FOLLOWING COUPONS WILL BE IN SUNDAY, DECEMBER 29 AND THE PRE-PRINTS OF JANUARY 5.

**Buy 2 Get One FREE**

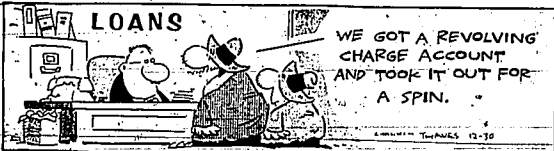
**25° OFF** any size pkg.  
**50° OFF** on 5.5 oz.  
**\$1.50 OFF** on a carton

- Kleenex Family size .....
- Energizer Batteries .....
- Perm Soft Styling Mousse .....
- Vantage Any style .....
- Premium Crackers 16 oz. or larger .....
- Kelloggs Just Right .....
- Slim Fast Shakes, bars, cookies .....
- Dextrin Any size .....
- Imperial Any 2 .....
- Lipton Soup Mix Any variety .....
- Lipton International Any variety .....
- Lipton Cup-O-Soup Any variety .....
- Welch's Squeezable Jellies Any flavor .....
- Ore-Ida Lites .....
- Duration Nasal Spray .....
- Arm & Hammer Detergent Powder or liquid .....
- Buffet Gourmet Varieties On 5 cans .....
- Electrolas Any size .....
- Lime-A-Way Any size .....
- Free N Soft Any size .....
- Scrub Free Tallot or kitchen .....
- Jet Dry Any size .....
- Scrub Free Bathroom Cleaner Any size .....
- Finish Dishwashing Detergent .....
- Robitussin Any size or form .....
- Night Relief Cold Formula .....
- Dimetapp Elixir 4 oz., 8 oz., Exentabs 12's, 24's Tablets 24's .....
- Kibbles 'n Bits 20 or 40 lbs. .....
- Kibbles 'n Bits 4 or 8 lbs. .....
- Light & Elegant Any kind .....
- Hostess Snack Cakes Any kind .....
- Hostess Snack Cakes Any kind .....
- Koebler Stone Creek Butter Thins .....
- Kaopectate or Kaopectate Concentrate .....
- Kaopectate Tablet Formula .....
- Chef's Blend Any bag or two boxes .....
- Chef's Blend 7 lb. or larger .....

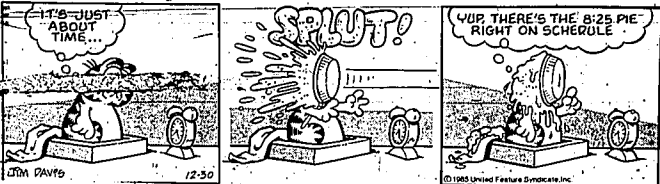
Doodlesbury

Comics

Frank and Ernest



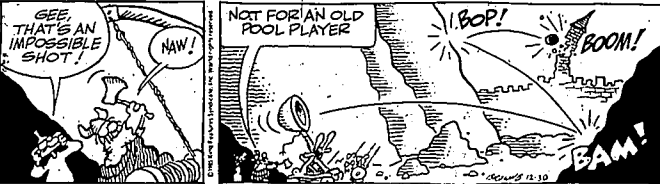
Garfield



Peanuts



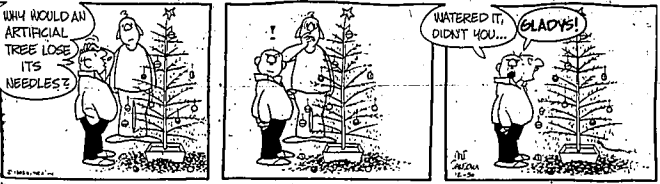
Hagar the Horrible



Blondie



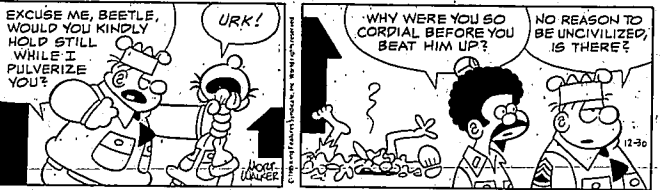
The Born Loser



Andy Capp



Beetle Bailey



Wizard of Id



Gasoline Alley



Broom-Hilda



Hi and Lois



ACROSS  
 Greater amount  
 Hearing organs  
 Tattered /  
 cloths  
 14 Concubine  
 15 Charles Lamb  
 16 That  
 17 Sound  
 18 Ponder  
 19 Not  
 20 Adult person  
 21 Memorable  
 22 Periods  
 23 Necessity  
 24 Art  
 25 Legal papers  
 26 Brutal man  
 27 Sound  
 28 Plumbered  
 29 Exit  
 30 Coin  
 31 Deep sound  
 32 Oppose  
 33 Authority  
 34 Melody  
 35 Stringed  
 36 Instrument  
 37 Singing voice  
 38 Holly  
 39 51st  
 40 Leaning  
 41 Giant  
 42 Party  
 43 Satellite  
 44 Refutation  
 45 Type of chair  
 46 Giant  
 47 The surface  
 48 Rabbit  
 49 The  
 50 Declines  
 51 Therwise  
 52 Interfer  
 53 Each eight of  
 54 Train of a  
 55

DOWN  
 1 The spray  
 2 Gargle  
 3 Excessive  
 4 Grease  
 5 Gelatin  
 6 Dry  
 7 Varnish  
 8 Ingredient  
 9 Oozed  
 10 Fashion over  
 11 Tanning salt  
 12 Ariz. lizard  
 13 Seasoning  
 14 Moderately  
 15 slow in music  
 16 Anger  
 17 Dregs  
 18 24 Task  
 19 Fly aloft  
 20 Plumed bird  
 21 Diving bird  
 22 Organization  
 23 Preclude  
 24 Reserve fire  
 25 Overall  
 26 fabric  
 27 Phonograph  
 28 discs  
 29 Guaranteed  
 30 Plunder  
 31 Intuitive  
 32 feelings  
 33 Baby toy  
 34 50 Aiso  
 35 Trims off  
 36 Gaelic  
 37 Cover of a  
 38 building  
 39 tongue  
 40 Tree trunk  
 41 year  
 42 Hardy cabbage  
 43 Scottish  
 44 Gaelic  
 45 Clarinet  
 46 Some

12/30/85

L.M. Boyd  
 What's what

It was a Polish druggist named Lagnacy Lukasek who in 1852 found oil seeping from the ground and from it distilled the first kerosene. It came to be almost as much in demand as what he was really trying to make - vodka.

In Deerfield, Ill., is a railroad station with areas designated "Kissing" and "No Kissing."

Q. Why is "Nylon" called that?

A. It's an acronym for "New York" and "London." Its developers worked in both places.

Near Tokyo is a prison wherein serve none but Japan's traffic offenders - about 250 at last report - and a third of them are DWIs.

EARLY KITCHEN

Q. First kitchen utensil invented is said to be the ladle. What was the

second kitchen utensil invented? A. The applicator, probably. Early specimens made from animal bones date far back. Scientists think such instruments were needed by prehistoric elderly who'd lost their teeth.

Q. Do birds get bald? A. Some do. Male wattled starlings, for example.

Q. How long would it take a frontiersman, covering 1,000 acres a day, to explore all of Alaska? A. About 1,000 years.

YUKON TRAFFIC

How many traffic regulations do you have to deal with daily? Visitors down from the Yukon say the only rule of the road recognized up there

is: When you meet a vehicle larger than your own, yield.

Greek rainmakers dipped oak branches in water when praying for rain, and sometimes it rained thereafter. The Romans threw clay images into the Tiber River, and that, too, was often followed by rain. Teutonic rainmakers poured water over nude girls. That never did produce rain, but they clung to the ritual.

"Just a few good men" Is all they want, say the U.S. Marines. Mighty good men, historically. They'd rejected Audie Murphy before he became the most decorated soldier in the U.S. Army.

In France, more men than women use cosmetics.

**Daily Horoscope**

GENERAL TENDENCIES: Don't allow a condition from the past keep you from using your talents and special abilities to forge ahead now. Be openminded in selecting people to help you in your progress.

ARIES (March 21 to April 19) Forget a quarrel with a partner yesterday and be more cooperative. Home matters can improve considerably.

TAURUS (April 20 to May 20) Handle dealings with outsiders, and get rid of confusion. Important things first is the best rule.

GEMINI (May 21 to June 21) Get together with associates to handle business affairs and routines wisely, and establish a better relationship.

MOON CHILDREN (June 22 to July 21) Get your finances better organized so that you can have greater abundance in the coming year.

LEO (July 22 to Aug. 21) Find new outlets to add to your daily living and get them into operation quickly. Dressing this evening.

VIRGO (Aug. 22 to Sept. 22) Have discussions with experts and associates and improve family relations. You can entertain at home in the evening.

LIBRA (Sept. 23 to Oct. 22) Being more direct with others and showing more affection for them is wise. Take more time for social life.

SCORPIO (Oct. 23 to Nov. 21) Something disappointing that could have happened yesterday should be forgotten. New enterprises should be entered into now.

SAGITTARIUS (Nov. 22 to Dec. 21) You may have to change plans with good friends, but it will lead to something better.

CAPRICORN (Dec. 22 to Jan. 31) You have to sit out delays where

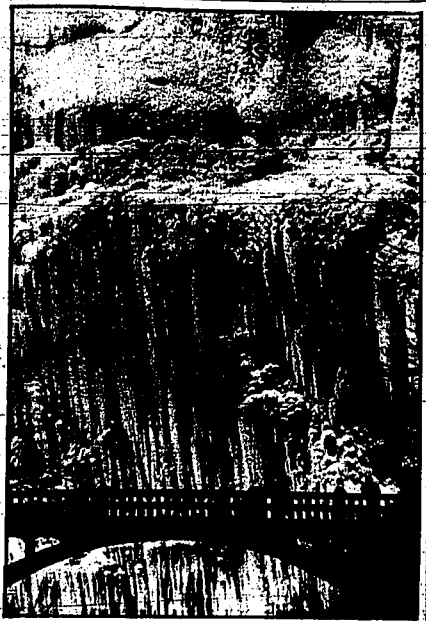
your friends are concerned, and then all works out fine.

AQUARIUS (Jan. 31 to Feb. 19) A good day to see many persons and gain fine benefits all around. Enjoy recreations that mean a great deal to you.

PISCES (Feb. 20 to March 20) You are able to get at the amusements that have been difficult to enjoy lately. Your friends can be very affectionate toward you.

IF YOUR CHILD IS BORN TODAY he or she will have an even temper and will be very affectionate, and kind toward others and will not be disappointing during early youth. The pride must not be hurt, so treat lightly on your progeny. Be sure to provide a good education, and then this becomes a successful life.

**Idaho West**



**Cold beauty**

Winter visitors to Multnomah Falls in the Columbia River gorge east of Portland, Ore., are treated to this frozen spectacle. Chill temperatures in recent weeks have frozen this waterfall and several others in the same area.

**Crash kills trial figure**

LOS ANGELES (AP) — A woman killed in a car crash that investigators are treating as a possible murder was identified Sunday as a prosecution witness in the espionage trial of former FBI agent Richard W. Miller, who faces a second trial.

Ludmila Kondratjeva, of Santa Monica, a 38-year-old Russian emigre, was found in the back seat of a car that apparently sailed out of control off Pacific Coast Highway in Malibu early Saturday, sheriff's investigators said. The Volkswagen Dasher was found upside down at the 'surl' line about 20 feet below the road.

Ms. Kondratjeva testified that Miller's Soviet lover and co-defen-

dant, Svetlana Ogorodnikov, brought him to dinner at her Santa Monica home one evening, during which he appeared ill at ease and lied about what he did for a living. Her testimony was not considered crucial to the case.

Miller, 49, is the only FBI agent ever charged with spying. A federal court jury deadlocked in November after his 10-week trial, and a second trial is to begin Feb. 13.

Sheriff's deputies called to the scene of Ms. Kondratjeva's death initially handled the case as an accident. But homicide investigators later were called in, and deputies said Sunday that the FBI had been consulted.

**Nampa rite draws 500**

NAMPA (AP) — Some 500 people attended a memorial service for a Nampa man who died in the Canadian airplane crash that killed 248 members of the Army's 101st Airborne Division.

Friends and well-wishers came to Trinity Lutheran Church in Nampa on Saturday to honor Spec. 4 Paul M. Crawford, 20, who was returning with the 101st on Dec. 12 from peace

keeping duty on the Sinai Peninsula. Among those attending the service were Gov. John Evans and Nampa Mayor Winston Goering. A funeral with full military honors followed the service.

The Rev. Barak Anderson, who officiated at both funeral and burial ceremonies, called Crawford's death, "a time of tragedy and a time of great loss."

Anderson said Crawford, a 1984 graduate of Nampa High School, was a young and headstrong man who was unhappy if he did not have purpose and direction to his life. His enlistment in the Army had given him that purpose.

Last week, a picture of Crawford on a table flanked by flags of the United States and veterans' organizations was set up in tribute to Crawford at Nampa City Hall.

**Idahoan wins Youth Hostel board seat**

WASHINGTON (AP) — The head of an exploratory campaign committee for former Idaho governor Cecil Andrus has been elected to the American Youth Hostels Inc.'s national board of directors.

Officials for the non-profit group said Larry Meierotto has been actively involved in the youth hostel program since 1972.

Meierotto, who now lives in Boise, is a former deputy mayor of Seattle, served as assistant secretary of interior under Andrus during the Carter administration, and earlier was a special assistant to the Democratic governor.

He now serves as head of Citizens for Idaho, which is testing the water for an expected run by Andrus for the Democratic nomination for governor next year.

American Youth Hostels provides low-cost, recreational and educational travel programs and accommodations nationwide. It is affiliated with the International Youth Hostel Federation, which coordinates a system of more than 5,000 hostels in 62 countries.

Subscribe to the Times-News

Conveniently delivered daily, lots of excitement, news, controversy, entertainment, information & budget stretching aids.

Subscribe now

Call 733-0931

**President signs benefit bill for victims of Gander crash**

LOS ANGELES (AP) — President Reagan signed legislation to increase life insurance benefits and housing allowances for the families of American soldiers killed in a plane crash coming home from the Middle East, earlier this month, the White House announced Sunday.

The measure was one of a dozen minor bills passed in the closing days of the congressional session and signed by Reagan during his holiday stay in Los Angeles.

The president and his wife, Nancy, planned to leave later in the day to spend the New Year's holiday at the estate of millionaire publisher Walter Annenberg near Palm Springs.

White House spokesman Peter Rousset said that before leaving his Los Angeles hotel suite, Reagan received oral and written intelligence updates from aides on the airport terrorist attacks that killed five Americans in Europe on Friday.

Rousset said the administration still has not determined who masterminded the coordinated attacks against passengers waiting to board Et Al airliners and other planes in Rome and Vienna.

Reagan will send letters of condolence "in the next day or so" to the families of the Americans slain in the grenade and rifle assaults.

The president never left his hotel during his three-day private visit to Los Angeles, but his ear doctor and allergist, who have treated him since he lived in the area before moving to Washington, stopped by the presidential suite to give their patient a checkup.

Reagan, 74, receives regular allergy shots for hay fever and has begun wearing hearing aids in both ears since becoming president.

Mrs. Reagan quietly left the Century Plaza Hotel on her own Sunday to visit some old friends before traveling to Palm Springs.

One of the bills Reagan signed authorizes free military housing or off-base housing allowances for dependents of the 248 members of the 101st Airborne Division killed Dec. 12 when their chartered airliner crashed on takeoff from Gander, Newfoundland. They were on the last leg of a flight bringing them home from peacekeeping duties in the Middle East.

The measure also made a recently enacted increase in the Service's Group Life Insurance program retroactive to enable the crash victims' beneficiaries to claim the increased benefits.

Other measures signed by Reagan included appropriations bill for the Panama Canal Commission and legislation requiring banks that hold securities for owners of stock to distribute proxy materials to the owners.

With the exception of a private party or two in the Palm Springs area, the Reagans are expected to remain secluded behind the walls of the Annenbergs' 200-acre estate until Thursday, when they return to Los Angeles overnight.

The president is scheduled to fly Friday to Mexico on the Mexican side of the border between California and Baja California, for a meeting with President Miguel de la Madrid before returning to Washington that night.

Aides said Mrs. Reagan would travel from Los Angeles to Phoenix, Ariz., to visit her ailing mother before flying home on Friday.

**California child hurt when plane struck shopping mall dies of burns**

OAKLAND, Calif. (AP) — A 14-month-old boy injured when a plane crashed into a crowded shopping mall has died, becoming the fifth victim of the Dec. 23 accident, officials say.

Alexander Luong, of Concord, who suffered second- and third-degree burns over 35 percent of his body, died Saturday night in Children's Hospital, the nursing supervisor's office reported.

Besides the infant, the crash at the Sun Valley Mall took the lives of the plane's pilot, his two passengers and a shopper, and injured 78 people. Sixteen of them are still hospitalized, six in critical condition.

The Beechcraft Baron plunged through the mall roof and sent down a shower of flaming debris. Children were waiting nearby to talk to Santa.

Investigators have narrowed the

probable cause to poor weather or pilot error, according to experts of the National Transportation Safety Board.

Chief investigator Don Lorente said equipment failure "has tentatively been ruled out as a result of a study of the wreckage and interviews with people who were near the crashsite."

The investigator estimated it could take as long as two months before the agency is ready to make an official announcement of the cause.

Lorente said no one saw the crash up close, although several people heard the plane before it hit. He said people described a sound indicating that the plane's two engines were "running smoothly with no sputtering or inconsistencies."

The engines are to be sent to the manufacturers in Mobile, Ala., for tests to determine if the crankshafts

were turning at impact, while the propellers were to be examined at an Oakland shop for flaws.

The investigator said one mistake the pilot, James M. Graham, appeared to have made was turning toward the mall after missing his first approach to fog-shrouded Buchanan Field. Lorente said standard procedure at Buchanan calls for planes to turn left, away from the mall, before another landing approach.

Lorente said it was not known why Graham, a 67-year-old veteran pilot in apparent good health, strayed from prescribed procedure.

**Experimental line cut off**

SANTA ANA, Calif. (AP) — Pacific Bell says it's hanging up its experimental "Talk 'n' Service," which allowed up to 10 callers to converse at a time, after teen-agers ran up huge bills and angered parents.

The year-old party-line service caused a furor when some Orange County teen-agers ran up bills ranging from \$165 to \$1,250. About 36 families received phone bills with more than \$100 in charges for the service.

Dave Carroll, Pacific Bell's area

vice president, said the service would end Tuesday, but could resurface.

**PG-13 Rating Introduced**

A new rating category is in place as of July 1. This new category is inserted between the current PG and R ratings. It is designated as "PG-13: Parents are strongly cautioned to give special guidance for attendance of children under age 13. Some material may be inappropriate for young children."

The revised five-category system of the voluntary film industry rating program is now as follows:

- G** General Audiences, all ages admitted.
- PG** Parental guidance suggested. Some material may not be suitable for children.
- PG-13** Parents are strongly cautioned to give special guidance for children under 13. Some material may be inappropriate for young children.
- R** Restricted, under-17 requires accompanying parent or adult guardian. Some material may be inappropriate for children under 17.
- X** No one under 17 admitted. All films rated after July 1 will be given ratings under the new five-category system.

When they need help, let them know — You're available

The biggest bargains are in The Times-News Classified.

Phone 733-0931

**Fast may resume**

SEATTLE (AP) — A Vietnam veteran who fasted 51 days to call attention to soldiers missing in Southeast Asia said Sunday he will resume his fast unless the White House sets a date for him to meet President Reagan.

Gino Casanova, 34, ended his fast on Dec. 5 after receiving a telephone call from Reagan. He said the president had agreed to meet with him within 60 days to discuss the plight of missing servicemen.

**CELEBRATION**

*at the Sandpiper*

**NEW YEAR'S EVE**

AND

JOIN US FOR DINNER ON *New Year's Day*

**The Sandpiper RESTAURANTS**

1309 Blue Lakes Blvd. • Twin Falls • 734-7000

**1986 Cause for Celebration!**

Come to our New Year's Eve Party, in our lounge!

Featuring music by **BREAKAWAY** 8PM - 1AM

Party favors will be passed out in the lounge at 11:30 p.m.

Overnight Accommodations available at a special New Year's rate, \$28 Double occupancy

Special Dinner Menu: 2 for \$26.00 Includes a glass of wine or champagne from 5 p.m. - 10 p.m.

**Holiday Inn**

Twin Falls, Idaho  
650 Blue Lakes Blvd • PH 733-0550

**HAPPY NEW YEAR**

**MOVIES**

WEEK INFLATION FIGHTER

THE SANDPIPER THE MOVIE

DUDDLEY MOORE

JOHN LITHGOW

EXCLUSIVE DAILY 7:00-9:25

— EXCLUSIVE — BASED ON A TRUE STORY

**OUT OF AFRICA**

ROBERT REDFORD

MERYL STREEP

EXCLUSIVE DAILY 8:00-11:00

ALL SEATS \$1.00

A STEVEN SPIELBERG FILM

**E.T. TERRESTRIAL**

THE STORY THAT TOUCHED THE WORLD.

EXCLUSIVE DAILY 7:00-9:00

DUDDLEY MOORE JOHN LITHGOW

THE MOVIE

EXCLUSIVE DAILY 7:00-9:00

GOODING

THE ADVENTURE OF A LIFETIME

Richard Chamberlain

**THE MOVIE OF THE YEAR**

Steven Spielberg presents

**YOUNG SHERLOCK HOLMES**

Before a lifetime of adventure.

They lived the adventure of a lifetime.

DAILY 7:10-9:20 SAT-SUN 10:00-9:40 \$100.71-10-9:20 DAILY 5:00-7:10-9:20

CHEVY CHASE

DAN AYKROYD

DAILY 7:10-9:20 SAT-SUN 10:00-9:40 \$100.71-10-9:20 DAILY 1:00-3:10 8:10-7:15-9:20

SPICE LINE USA

DAILY 7:10-9:20 SAT-SUN 10:00-9:40 \$100.71-10-9:20 DAILY 1:00-3:10 8:10-7:15-9:20

GET A HANGOVER SEAT THIS HOLIDAY SEASON FOR THE FAMILY EVENT OF THE YEAR!

**ROCKY IV**

DAILY 7:30-9:15 SAT-SUN 10:30-9:15 \$100.71-10-9:20 DAILY 4:00-8:40 7:30-9:15

### PET of the WEEK



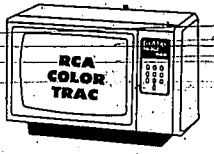
We've got the one for you. Small dogs, big dogs, black dogs, white dogs. Come on down for a good pet for you or someone you love. First one goes as Pet of the Week.

Hound Pound - 139 Sixth Ave. W.  
5-7 P.M. 733-0860



Boarding fees waived because Pepsi Cola Bottling Company has sponsored this dog. Vet & license fees still apply.

### RCA SMALL SCREEN COLOR SET!



13" QUARTZ TUNER  
SAVE \$100

ONLY **\$279<sup>95</sup>**

WILSON-BATES

CHOOSING THE RIGHT PROFESSION IS ALL-IMPORTANT

FINANCIAL SECURITY - INDEPENDENCE - PRESTIGE

Exclusive and complete curriculum

- Nationally Accredited
- Grants/Loans Available
- Easy Payment Plan
- Placement Assistance

Start Your Rewarding Field of

### HAIR DESIGNING

CLASSES STARTING

JANUARY 7 and FEBRUARY 25

733-7777

JUAN'S COLLEGE OF HAIR-DESIGN

577 Lynwood Mall, Twin Falls

### YEAR-END CLEARANCE SALE!

BUY NOW & SAVE!

- ★ APPLIANCES ★ TV'S
- ★ STEREOS ★ VCR'S
- ★ DINETTES ★ SOFAS
- ★ MATTRESS & BOX SPRINGS
- ★ RECLINERS ★ CARPET
- ★ END TABLES ★ COFFEE TABLES
- ★ LAMPS ★ PICTURES
- ★ AND MORE!



Blacker APPLIANCE FURNITURE

EVERYTHING FOR THE HOME




# WISHING YOU A PROSPEROUS NEW YEAR

We're so very appreciative of your support.

# FROM STAR VALUES

### SnugFleece® Guarantees You A Better Night's Sleep.



"SnugFleece has given me the best rest and sleep I've had since I was a kid." Ernest Borgnine

SnugFleece is a luxurious two-inch thick New Zealand wool underlay that is positioned on your bed between the mattress and the bottom sheet. This cushion support helps soothe back and muscle ache. The wool pile assists in evenly distributing body weight and easing pressure points, ensuring a more restful, comfortable sleep.

The SnugFleece pure wool mattress pad is the best made. It features nearly twice the wool content of its competitors.

We invite you to try one for 90 nights. If, after 90 nights, you're not sleeping more comfortably with fewer aches and pains, we insist you return it for a full refund - no questions asked!

INTRODUCTORY OFFER

**25% OFF** REG. PRICE

Give Us A Try... You'll See Why More Magic Valley Families Depend On

**KENS FURNITURE & APPLIANCES**

453 Main Ave. E., Twin Falls 733-2233

### This Star Value Space Could Be Yours For Only **\$60<sup>00</sup>** Per Week

### This Star Value Space Could Be Yours For Only **\$60<sup>00</sup>** Per Week

### DIDN'T GET THAT TYPEWRITER OR SHAVER FOR CHRISTMAS??

Well Come On In...

### YEAR-END CLEARANCE ON NOW!!

(Specials On All Items Remaining In Stock)

Thank You Magic Valley for a Super 1985! We sincerely appreciate your business and look forward to serving you in 1986.

Bill Glenn & Tim

**SMAZAL'S** OFFICE APPLIANCE COMPANY

8:30 A.M. - 5:30 P.M. MON. THRU FRI.  
502 MAIN AVE. S. TWIN FALLS 733-2437

### This Star Value Space Could Be Yours For Only **\$60<sup>00</sup>** Per Week

### 25" MAGNALL SYSTEM 3



**ZENITH**

- Computer Space Command 2600
- Remote Control
- 137 Channels/Capability, including 101 cable channels
- Simulated Oak Finish
- Chromacolor Contrast Picture Tube

SAVE **\$140** NOW **\$569<sup>95</sup>**

**ECONOMY** APPLIANCE AND TELEVISION

1170 BLUE LAKES BLVD., NO. - TWIN FALLS  
NEXT TO NEWTON'S SPORTS CENTER

### HOLIDAY SPECIALS!

Eureka & Hoover Vacuum Cleaners

Starting From **\$69<sup>95</sup>**

Holy's **\$29<sup>95</sup>** From

Wide selection of guaranteed reconditioned vacuums.

WE HAVE Kirby, Electrolux, Compacts, Filterqueen, Rainbows and many other makes.

Starting as low as **\$25<sup>00</sup>**

PARTS, SERVICE, BAGS & BELTS FOR ALL MAKES

"Buy Where The Service Is."

**VACUUM CLEANERS OF IDAHO**

Corner of Blue Lakes & 2nd Ave. East  
Twin Falls

733-1027

### DISCOUNT PRICES ON ALL MAJOR HOME APPLIANCES

- ★ Refrigerators
- ★ Freezers
- ★ Ranges
- ★ Dishwashers
- ★ Microwaves
- ★ Vacuum Cleaners
- ★ Washers
- ★ Dryers
- ★ Air Conditioners
- ★ Trash Compactors

(existing stock only)

Sale Ends January 4, 1986

- MAYTAG • HOTPOINT
- GIBSON • WHIRLPOOL
- KITCHENAID • PANASONIC
- MODERN MAID • HOOVER

GIVE US A TRY... You'll See Why More Magic Valley Families Depend On

**KENS FURNITURE & APPLIANCES**

453 Main Ave. E., Twin Falls 733-2233











Make sure teens get messages loud, clear — B6

Baby Fae doctor criticizes his critics — B7

## Skating! Cross-country skiers going for a new style

By DOUG NOBLE GREENE  
Times-News correspondent

KETCHUM — When it comes to exercise, nothing beats cross-country skiing. It works virtually all of the body's muscle groups, combining strength, coordination, rhythm and balance in an aerobic sport which is one of the nation's fastest growing winter sports. One hour of hard cross-country skiing will leave the greatest of athletes in a panting sweat.

And now the sport is undergoing its biggest revolution since the changeover from wood to fiberglass skis, but this revolution is one of technique, not equipment.

The traditional diagonal stride — the "kick-glide" — is giving way to "skating," a skiing style that is similar to that used by speed skaters on ice. To those who are already hooked on cross-country skiing, the new style is so exciting and practical that the sport is destined for permanent change.

Racer and instructor Allan Watson recently conducted a skating clinic at Bigwood Ski and Touring Center, one mile north of Ketchum on Hwy. 78. During the class he explained the number one reason for the new technique's popularity: It wins races. When the conditions — hard snow and relatively warm temperatures — are right, skiers using the skating technique will leave the diagonal striders shuffling in their wake. Bill Koch of the U.S. Olympic Cross-country Ski Team perfected his winning style after closely studying the techniques of the few racers who could beat him. They were all skating.

Skating is now becoming extremely popular with almost all cross-country skiers for several good reasons. Instructors who have taught both skating and the diagonal stride find that people learn skating more quickly. While the "diagonal" is easy to get started on, it takes several years of dedication to master because of the many nuances involved.

Watson explained that the two key elements to mastering skating are proper weight transfer and

effective use of the upper body. Balance proved to be one of the more elusive elements when working on weight transfer. Watson said, "You have to get used to being balanced while being fully extended on one ski. Some people are born with good balance. Mostly it comes from doing it."

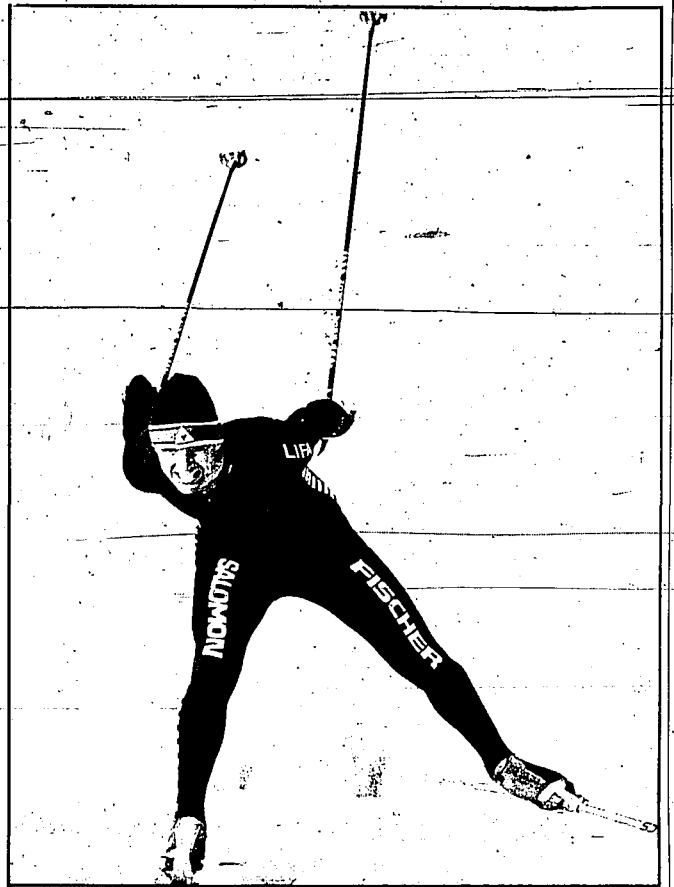
There are two different skating techniques, with small variations within each. One usually learns the "marathon skate" first, because it is so often utilized with the traditional diagonal stride. By keeping one ski in the snow tracks, and angling the other ski at approximately 30 degrees, one "skates" or pushes off that ski while transferring weight to it.

The other technique is the "V-skate," which is done outside of the tracks and in the movement that most resembles the ice skater. Momentum is built by pushing off on one ski then the other, with the skis angled in a "V" configuration. Extra speed is added by "double poling" with the upper body on each stride. With all of the body's weight committed to one ski, good balance becomes crucial.

Another advantage to skating is the ease of waxing. Instead of trying to figure out which of seemingly dozens of "kick waxes" to apply, you merely pull your skis off the ski rack and take to the snow. The only wax needed is a glide wax applied from tip to tail.

If you have already invested in cross-country track equipment for the traditional methods, the only change you need to make is in longer poles. Instead of using "under the armpit" as a pole length guideline, it is now appropriate to buy poles that touch the chin. This means 15-20 centimeters longer than those which you probably have.

The best way to learn the new technique is by taking a lesson with a qualified instructor, such as those at Bigwood or the Sun Valley Nordic and Touring Center. Bigwood offers "video lessons" so you can see yourself on a TV monitor for almost instant feedback. After that, it is a matter of getting out on your cross-country skis and skating. Before long you will find yourself enjoying this new and fun approach to an exciting sport.



Bigwood instructor Allan Watson demonstrates the in-track 'marathon skate'

## Quick takes

### Cardiologist has heart in poetry

ATLANTA (AP) — What did John Keats, Arthur Conan Doyle, Rabelais, Chekhov and W. Somerset Maugham all have in common beside their literary fame? All were originally trained as physicians, reports Internal Medicine News, which notes that continuing the literary tradition among physicians is Dr. John Stone, a cardiologist whose third collection of poetry — "Renaming the Streets" — was published recently in Atlanta.

### Asthmatic athletes prove point

SAN FRANCISCO (AP) — The 1984 Olympics performance of American athletes with asthma demonstrated that — with proper medical management — people with exercise-induced asthma can participate in sports like anyone else, according to Family Practice News.

The medical journal reports that of 667 participants in the 1984 Summer Games, 67 had asthma and they won 41 medals, including 15 gold medals.

Exercise-induced asthma affects 10 to 12 percent of Americans, and 80 to 90 percent of all asthma patients experience aggravation due to exercise and generally shun sports, the publication says.

This is a mistake because with properly timed medications they can overcome their illness and obtain the benefits of physical exercise, it adds.

### Conference: Put women in place

NEW YORK (AP) — "Let's Put Women in Their Place in Business" will be the theme of a daylong conference scheduled Feb. 22, 1986, at which more than a hundred leading women business executives will share their formulas for success.

Some 2,000 entrepreneurial and corporate business women are expected to attend the American Women's Economic Development Corporation Sixth National Conference for Women in the Fashion, Beauty, Fitness, Food and Home Fashion Businesses. The meet is co-sponsored by the U.S. Small Business Administration, the New York State Department of Commerce and the New York City Mayor's Office of Business Development.

Participants from across the country can choose from among the 32 workshops, designed for women who want to start their own business, strengthen or expand their business or for corporate managers who want to advance their careers.

### Health focus will reshape foods

ORLANDO, Fla. (AP) — Interest in health will significantly change the American food marketplace over the next decade, marketing consultant Faith Popcorn predicted at the Campbell Soup Co.'s sixth annual worldwide marketing meeting here.

She listed as the ten leading lifestyle trends: health and fitness; eating out and taking out; imported and premium quality; aura of health; all natural; a new work ethic; nostalgia; lighter eating; indulgence; and grazing.

### Bars offer safety options

## Holidays present hazards for drinkers

By KRISTIN TUCKER  
Times-News correspondent

TWIN FALLS — Drinking responsibly means getting a good example. And John Gebeke, counselor at the Walker Center for Alcoholism and Chemical Dependency Treatment in Gooding, wishes more people would adopt responsible drinking habits as their New Year's resolution.

Youth are more apt to become responsible about their use of alcohol if they have a good model to follow. And many adults are most likely to drink too much when they are surrounded by friends who are doing the same.

"We are more apt to do as we see than to do as people say," he says.

Gebeke says many people see the holidays as a legitimate time to use a drug or alcohol. Yuletide and New Year's festivities often include more temptations and excuses than other times of the year. And people who drink too much may pardon themselves by saying, "I wouldn't want to offend anyone by refusing this drink," or "It's the season!"

"Alcoholism is not a seasonal thing," says Barry Meyers of the Port of Hope. "It is not so

much the alcoholic who goes off the deep end during the holidays but problem drinkers who decide they can't responsibly during the holidays."

Meyers admits that this may be a difficult time for an alcoholic who has been sobered for a while. "They may start to feel sorry for themselves, and feel lonely. And they may lose their sobriety by taking a drink."

New Year's Eve celebrations often include cocktail parties with champagne toasts at midnight. For many people, ringing in the New Year means drinking excessively.

In recent years, the public has become increasingly aware of the hazards of drinking too much. There has been more publicity about alcohol-related accidents and those serving alcoholic beverages are more aware of their liability.

Like most bar managers, Stan Thomas of the Rock Creek in Twin Falls knows about the liabilities of serving too much alcohol to customers. "The legal responsibility is nothing new," he says. A few years ago a friend of his, a bar manager in California, faced five simultaneous alcohol-related lawsuits. Each of the suits was for \$200,000 or more.

Thomas says the Rock Creek offers to transport customers who are too drunk to drive

themselves home. That's a year-round policy that he uses three or four times each month. "We have driven people as far as Hagerman," he says. "We would rather do that than see anyone get in trouble with the law or have more serious troubles."

"We are more attentive to the problems during Christmas and New Year's," says Thomas. The Rock Creek has pooled funds with four other Twin Falls bars to reserve a taxi to take home any customers who are unable to drive.

Managers of the Sandpiper, Oasis, Canyon Springs Inn and Rock Creek bars purchased the taxi service for two evenings last weekend plus tonight and tomorrow night.

Other local establishments are also taking steps to make sure their customers celebrate safely.

Many bars are now serving a selection of "mocktails," low or non-alcoholic beverages. "You don't have to order a Shirley Temple but can order something that tastes good, an adult drink without alcohol," explains Meyers.

At the Landmark in Hazelton, cocktail waitresses are instructed to ask each group of diners who will be the driver and to serve drivers

\* See DRINK on Page B6

## Employers avoid hiring vocal women's libbers

By VINCENT BOZZI  
Psychology Today Magazine

Thanks to pressure from the women's movement, employers have been scrambling to hire more female executives. But if women want to take advantage of this situation, they probably shouldn't flaunt their views on equal employment.

Business researchers Michael A. Hitt and William G. Zikmund found that employers today are interested in hiring women, but avoid hiring the vocally feminist ones because they

don't want women shoving equal employment down their throats.

Hitt and Zikmund located two female Master of Business Administration students who had written their theses on job discrimination against women. The researchers sent the resumes of these women to 200 corporations listed in the College Placement Annual as seeking MBA students. The qualifications listed in the resumes were judged to be equal. One-fourth of the resumes gave the applicant's full name but no thesis topic; one-fourth gave both

name and topic; one-fourth masked the women's sex by using initials and also left out the thesis topic; the remaining quarter used initials but mentioned the thesis topic.

The results suggest that employers may be less willing to employ a female interested in equal men. Men and women were equal when the women mentioned their thesis topic, but when they left it out they pulled ahead of the men and received more than twice as many positive replies.

Hitt is at Texas A.M. Zikmund is at Oklahoma State University.

## Looking good

### Makeup gets New Year's glow

NEW YORK (AP) — The cosmetics industry is predicting a boom in sales for the New Year's season. Sales of makeup are expected to rise 10 percent over last year's, according to industry analysts.

### Mousse is in while gel is out

CARY, Ill. (AP) — Gel is out and mousse is in, according to manufacturers of hair styling products who were questioned by an advertising magazine recently. Sales of hair styling and coloring mousses rose 68 percent in 1985 to \$175 million, according to the magazine.

### Pigskin steps out in fashions

NEW YORK (AP) — Pigskin leather has stepped out of its traditional role as a shoe and glove leather with new processing techniques that produce a fabric so light that it's being designed into blouses and dresses. Pigskin can come in more than 1,000 hues and expresses color better than other leathers, says Christine Wallace, fashion consultant, writer and retired vice president of the National Shoe Retailers Association.



# Use firmness, clarity, consistency with your irksome teen

Maybe your teen won't do chores. Lies. Steals. Cuts school. Stays out late (or even all night). Hangs out with undesirable friends. Takes tantrums. Or gets drunk.



Jo Ann Larsen

You feel worried. Helpless. Humiliated. Guilty. Your teen is turning out badly and you suspect it's your fault.

If these teen behaviors — and parent feelings — sound only too familiar, don't feel alone. You're in the company of numerous other suffering parents who've concluded their teens are impossible to live with and see no solution to their problem.

rest of us. Children are unlikely to follow parents' rules when they perceive those rules to be optional, that is, lax, inexact, indistinct, vague or ill-defined. On the other hand, they are likely to follow rules that are mandatory, that is, rules that deal exclusively with behavior and tell the child specifically what to do or not to do.

more, or only that you think they should study more? "If you say, 'If you don't quit cutting school, you'll never graduate from high school and you'll never get a decent job,' do your children hear that they must quit cutting school, or that you think they'll turn into bums if they don't?"

what to do, when to do it, and how often it is to be done, says Bodenhamer. "Begin your directions with words describing an element of time (now, never, always) or a verb (stop, quit, start, don't be, take, make, mow, do). Add when-and-how-often you want the rule obeyed. For example, "Never cut class again."

always stop fighting when it occurs. If your rule is "be home by 10 p.m. on weeknights," enforce your stand. One father whose teenage daughter was ignoring her curfew simply announced he was accompanying his daughter on her dates until she showed her deadline. His daughter did a quick about-face.

## 'If you tell your children, 'shape up' ... do what, specifically, are they to do or not do?'

- Make threats. "If you say, 'If you come home late one more time, you're grounded for a week,' do the children have to come home on time, or merely be willing to take the consequences of staying out late?"
- Give unspecific directions. "If you say to your children, 'Be home on time,' whose definition of 'on time' are they likely to use, yours or theirs?"
- Give advice. "If you say, 'If I were you, I'd study more,' do your children hear that they must study more as possible, tell your children
- "Don't ever call your brother/sister \_\_\_\_\_ or any word or expression like it."
- "Be home at \_\_\_\_\_ (specific time) tonight."
- "Do everything the teacher assigns every day."
- Consistently follow through until your children demonstrate they will enforce a rule on their own. If, say your rule is "no fighting," you must

Jo Ann Larsen, D.S.W., is a Salt Lake City counselor and a daughter of Dr. Ivin M. and Alice Jackson of Kimberly.

# 'Cats' star stretches fitness limits

By SANDRA WEINRIB Los Angeles Times

Staying fit and trim is part of the regimen of any dancer and given the kinds of costumes some of her roles have demanded, this seems particularly important for Broadway actress and dancer Christina Kumi Kimball.

line and muscle were visible," Kimball says. Kimball said friends and colleagues often remark on the fullness of her life. In addition to her career as an actress and dancer, she finds time for other pursuits important to her. Among her favorite "causes" are Narcanon, an anti-drug organization, and the Religious Freedom Foundation, a non-sectarian group dedicated to preserving freedom of religion.



Christina Kumi Kimball builds up energy reserves

lightly buttered bread or whole wheat toast and a half of a fresh apple. "I eat pieces of fruit, like apples, because I find the natural sugar keeps my pace high."

# Treatments for brain tumors controversial

By JAMIE TALAN Newsday

Paula Dane was eating dinner one night about 18 months ago when her elbow dropped onto her plate. That was the beginning. She slapped her hands on the table, her face contorting, thinking they were her husband's fingers. Her arms jerked uncontrollably. Her left breast and hand felt unnaturally hot.

blood-brain barrier, this mechanism prevents foreign substances from crossing over from the blood vessels running through the brain to the brain cells themselves. This means that while most infections are kept out, so are drugs used to treat those infectious agents — and tumors — that do find their way into the brain cells.

# Fear of memory loss: a path to forgetfulness?

By SANDY ROVNER The Washington Post

WASHINGTON — Try to remember. Did you lose your car keys today? Did you panic because you thought, aha, there it goes — another brain cell zapped. Age? Senility? The End!

says West in her new book, "Memory Fitness Over 40" (\$12.95, Triad Publishing), "when based on potential, but not actual, memory dysfunction can cause the very problem you fear: you will lose some of your memory ability because anxiety interferes dramatically with effective remembering."

and it is how retrieved. Psychologists may approach it from somewhat different perspectives, but they, too, are becoming increasingly fascinated by the ease with which humans function daily — knowing, for example, where they are in space, how to get to work, how to find the garlic powder in the grocery, where the science fiction books are in the bookstore.

Some memory functions do tend to slow down with aging, although many others do not, says West. Moreover, there are techniques for minimizing even the small deficits that may occur naturally. But these techniques or strategies need to be learned in advance — at about 40, say — because learning new things does become more difficult, or at least takes more time, as one ages.

# To do for you

"To Do for You" is a calendar listing health-related activities, events and education. Information should be submitted by Thursday for publication in the following Monday's P.O. Section. Mail notices to "To Do for You," P.O. Box 548, Twin Falls, 83303, or deliver them to our office at 132 Third St. SW.

person is allowed to attend free of charge. Pre-registration is required, and early registration is recommended. Call 737-2000 Monday through Friday between 8 a.m. and 4 p.m. and ask for Educational Services.

Early pregnancy classes are held on a quarterly basis. MVRMC sets childbirth course TWIN FALLS — A prepared childbirth course for parents due in March will begin Jan. 8 at Magic Valley Regional Medical Center.

**SAGE STUDIO OF DANCE**  
2042 Fourth Avenue East, Twin Falls  
Phone 734-9903

**RESOLUTION: GET IN SHAPE IN 1986!**  
**AEROBICS**  
Mon.-Wed. Fri. 8:45-10:00 A.M.  
Mon.-Tues.-Thurs. 5:30-6:45 P.M.  
Pam Borg, Certified Aerobic Instructor

And/or  
**BEGINNING JAZZ**  
For Teens through Adults Monday 6:00 - 7:00 P.M.  
Bonnie Mason, Instructor

**BALLET** 4 years and up  
**COMBO CLASS** Ballet and Jazz 8 years and up  
Bonnie Mason, Instructor

**COORDINATE A COMPLETE FITNESS WARDROBE AT THE LEOTARD GALLERY.**





# Use firmness, clarity, consistency with your irksome teen

Maybe your teen won't do chores. Lie in bed. Cuts school. Stays out late (or even all night). Hangs out with undesirable friends. Talks tantrums. Or gets drunk.



Jo Ann Larsen

You feel worried. Helpless. Demoralized. Guilty. Your teen is turning out badly and you suspect it's your fault.

Children are unlikely to follow parents' rules when they perceive these rules to be optional, that is, lax, unclear, vague or ill-defined. On the other hand, they are likely to follow rules that are mandatory, that is, rules that deal exclusively with behavior and tell the child specifically what to do or not to do.

Parents are unlikely to follow these rules when they perceive these rules to be optional, that is, lax, unclear, vague or ill-defined. On the other hand, they are likely to follow rules that are mandatory, that is, rules that deal exclusively with behavior and tell the child specifically what to do or not to do.

Parents are unlikely to follow these rules when they perceive these rules to be optional, that is, lax, unclear, vague or ill-defined. On the other hand, they are likely to follow rules that are mandatory, that is, rules that deal exclusively with behavior and tell the child specifically what to do or not to do.

Parents are unlikely to follow these rules when they perceive these rules to be optional, that is, lax, unclear, vague or ill-defined. On the other hand, they are likely to follow rules that are mandatory, that is, rules that deal exclusively with behavior and tell the child specifically what to do or not to do.

Parents are unlikely to follow these rules when they perceive these rules to be optional, that is, lax, unclear, vague or ill-defined. On the other hand, they are likely to follow rules that are mandatory, that is, rules that deal exclusively with behavior and tell the child specifically what to do or not to do.

## 'If you tell your children, 'shape up' ... what, specifically, are they to do or not do?'

# 'Cats' star stretches fitness limits

By SANDRA WEINRIB  
Los Angeles Times

Staying fit and trim is part of the regimen of any dancer and given the kinds of costumes some of her roles have demanded, this seems particularly important for Broadway actress and dancer Christina Kuml Kimball.

line and muscle were visible," Kimball says. Kimball said friends and colleagues often remark on the fullness of her life. In addition to her career as an actress and dancer, she finds time for other pursuits important to her. Among her favorite "causes" are Narcanon, an anti-drug organization, and the Religious Freedom Crusade, a non-sectarian group dedicated to preserving freedom of religion.



Christina Kuml Kimball builds up energy reserves

Kimball's first performance with New York's Metropolitan Opera is an example. Minutes before the dress rehearsal for Verdi's "Macbeth" was to begin, the director decided that the sensual nature of the character Kimball was playing, the part of Hecate, warranted nothing but a G-string for a costume.

lightly buttered bran or whole wheat toast, and a half of melon consumed with a megavitamin supplement containing vitamins A, D, E, C, B-complex and multivitamins.

"Mid-morning I eat pieces of fresh, ripe fruit because I find the natural sugar keeps my pace high."

"Lunch is when I have carbohydrates. My favorite is pasta salad on a bed of greens. I do carbs at lunch to build up the super energy that is needed for the evening when I perform the show. Also, I take an extra supplement of vitamin C and B-complex along with fruit juice mixed with sparkling water, which is a light and refreshing treat."

"Dinner time is about 4:30 p.m. This meal is especially important for me because it must be light so that it will digest quickly."

Psychologists may approach it from somewhat different perspectives, but they, too, are becoming increasingly fascinated by the ease with which humans function daily — knowing, for example, where they are in space, how to get to work, how to find the garlic powder in the grocery, where the science fiction books are in the bookstore.

# Fear of memory loss: a path to forgetfulness?

By SANDY ROVNER  
The Washington Post

WASHINGTON — Try to remember. Did you lose your car keys today? Did you panic because you thought, aha, there it goes... another brain cell expiring. Agel! Senility! The End!

One of the reasons West wrote the book was that wherever she went, as soon as her speciality became known, she would be besieged with questions from secretly terrified people who thought they detected signs of senility in their own memory lapses.

and it is how retrieved. Psychologists may approach it from somewhat different perspectives, but they, too, are becoming increasingly fascinated by the ease with which humans function daily — knowing, for example, where they are in space, how to get to work, how to find the garlic powder in the grocery, where the science fiction books are in the bookstore.

Some memory functions do tend to slow down with aging, although many others do not, says West. Moreover, there are techniques for minimizing even the small deficits that may occur naturally. But these techniques or strategies need to be learned in advance — at about 40, say — because learning new things does become more difficult, or at least takes more time, as one ages.

Some memory functions do tend to slow down with aging, although many others do not, says West. Moreover, there are techniques for minimizing even the small deficits that may occur naturally. But these techniques or strategies need to be learned in advance — at about 40, say — because learning new things does become more difficult, or at least takes more time, as one ages.

Some memory functions do tend to slow down with aging, although many others do not, says West. Moreover, there are techniques for minimizing even the small deficits that may occur naturally. But these techniques or strategies need to be learned in advance — at about 40, say — because learning new things does become more difficult, or at least takes more time, as one ages.

# To do for you

"To Do for You" is a calendar listing health-related activities, events and education. Information should be submitted by Thursday for publication in the Monday Times-News. Reach section. Mail notices to The Times-News, P.O. Box 548, Twin Falls, 83303, or deliver them to our office at 132 Third St. W.

**Classes on diabetes scheduled**  
TWIN FALLS — Magic Valley Regional Medical Center will hold Community Diabetes Classes on four consecutive Monday nights Jan. 6, 13, 20 and 27 from 7 to 9 p.m. in the 2nd Floor Conference Room.

person is allowed to attend free of charge. Pre-registration is required, and early registration is recommended. Call 737-2900 Monday through Friday between 8 a.m. and 4 p.m. and ask for Educational Services.

**Early pregnancy class offered**  
TWIN FALLS — An early pregnancy class for parents in their first four months of pregnancy will be held Jan. 6 at Magic Valley Regional Medical Center. The class will be in the 2nd Floor Conference Room from 7 to 9:30 p.m.

Early pregnancy classes are held on a quarterly basis.

**MVRMC sets childbirth course**  
TWIN FALLS — A prepared childbirth course for parents due in March will begin Jan. 8 at Magic Valley Regional Medical Center.

## SAGE STUDIO OF DANCE

2042 Fourth Avenue East, Twin Falls  
Phone 734-9903

### RESOLUTION: GET IN SHAPE IN 1986!

#### AEROBICS

— Mon.-Wed. 6:45-10:00 a.m.  
— Mon.-Tues.-Thurs. 5:30-6:45 p.m.  
Pam Berg, Certified Aerobic Instructor

And/or

#### BEGINNING JAZZ

For Teens through Adults Monday 6:00-7:00 P.M.  
Bonnie Mason, Instructor

#### BALLET

4 years and up

#### COMBO CLASS

Ballot and Jazz  
8 years and up  
Bonnie Mason, Instructor

COORDINATE A COMPLETE FITNESS WARDROBE AT THE LEOTARD GALLERY.





## Invisible braces cost more, pose some problems

By TIMOTHY C. GOGAN, D.D.S.  
Los Angeles Times

Invisible braces have benefitted many who otherwise would have avoided braces for cosmetic reasons. But are they right for you?  
Dr. Craven Kurz, a Beverly Hills, Calif., orthodontist, began creating invisible braces in 1973 and within 3 years he had patented a procedure for installing braces on the tongue side of the teeth.

The idea of moving teeth, using brackets on the inside of the teeth is not new. This method first appeared at the turn of the century and the main device was a removable tongue-side retainer.  
New advances in plastic adhesives and the development of more resilient orthodontic wire and metal brackets have made invisible braces possible.  
There are certain difficulties peculiar to installation of invisible braces. For example, the inside of a front tooth is shaped differently from the outside

and, so the brackets have to be a totally different design. In addition, the bracket must be designed so that the patient won't knock it off while chewing.  
Not all of the teeth need to have brackets, usually just the front six upper and six lower teeth while the bicuspids and molars can have conventional braces.  
The cost of treatment will be 30 to 50 percent more than conventional orthodontic adult fees due in part, to higher lab costs and longer appointment times.

# HAPPY NEW YEAR

To paraphrase Dickens, "It was the best of years. It was the worst of years, but all in all 1985 wasn't too bad even in spite of the grocery price wars, 49¢ turkey prices, more taxes, farmers with less money to spend for food they don't grow themselves and Haley's Comet. Swensen's thanks you for your patronage and support in 1985 and hopes that for you and your family 1986 will be a year of prosperity, accomplishment and happiness.

## FROM SWENSEN'S

SWENSEN'S DEPENDABLE QUALITY

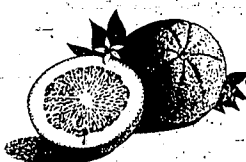
**LEAN GROUND BEEF** ..... **\$1.09** lb.

U.S.D.A. CHOICE  
**BONELESS BEEF CHUCK ROAST**  
7 Bone Cut  
**\$1.39** lb.

**BONELESS BEEF STEW MEAT**  
LEAN  
**\$1.49** lb.

COLOSSAL SIZE  
**TANGERINES**

lb. **39¢**



**PINK GRAPEFRUIT**

**6 For \$1.00**



Super Sweet  
And Juicy Now Just Like  
You've Been Waiting For.

SWEET JUICY CALIFORNIA  
**NAVEL ORANGES**

**4 lbs. \$1.00**  
For



2-LITER  
**PEPSI**

**\$1.29**

PLUS YOU GET A 2 LITER JUG  
OF SQUIRT FREE WITH EACH 2 LITER PEPSI

WESTERN FAMILY  
**POTATO CHIPS**

**\$1.19**

GIANT  
14 OZ.  
BAG



**SHASTA POP**  
2-LITER JUG

**88¢**



NABISCO  
**SNACK CRACKERS**

Wheat Thins, Triscuits, Better Cheddars, Etc.  
**\$1.39**



NALLEY  
**CHIP DIPS**

ALL FLAVORS  
8 OZ. .... **66¢**



U.S.D.A. CHOICE BONELESS BEEF  
**SHOULDER STEAK**

**\$1.59** lb.

FRESH  
**CHICKEN BREASTS**

**\$1.09** lb.

HYGRADE 5 VARIETIES  
**LUNCHEON MEATS**

12 OZ. PKG. .... **99¢**

MILD  
**CHEDDAR CHEESE**

Store Cut  
Random  
Weight ..... **\$1.49** lb.

FALLS BRAND  
**WIENERS**

2 LB. PKG. .... **\$2.99**

TOTINOS  
**PIZZA**

ALL FLAVORS

**88¢** Ea.

JENO'S  
**PIZZA ROLLS**

4 VARIETIES

**99¢** Pkg.

NEW BETTY CROCKER  
POP SECRET  
**MICROWAVE POPCORN**

Regular  
or Butter ..... **\$1.59**

WESTERN FAMILY  
LARGE PITTED  
**OLIVES**

Tall  
Can ..... **69¢**

BLUE DIAMOND SMOKEHOUSE

**ALMONDS**

Also Barbeque, Natural and Roasted & Salted

6 OZ.  
CAN ..... **98¢**

Snow-White  
**CAULIFLOWER**

Large Head  
**\$1.44** Ea.

Crisp  
**CELERY**

Large Stalk  
**59¢** Ea.

**RADISHES & GREEN ONIONS**

5 Bunches For  
**\$1.00**

Green Leaf  
**LETTUCE**

2 Heads For  
**\$1.00**

Western Family  
**CREAM CHEESE**

8 oz.  
**75¢**

Tree Top  
**APPLE JUICE**

Frozen Concentrate 12 oz.  
**66¢**

Triangle Young's  
**EGG NOG**

Quart  
**99¢**

Triangle Young's  
**SOUR CREAM**

Pint  
**89¢**

### PROCTOR & GAMBLE SALE

IVORY  
LIQUID  
32 OZ.  
**\$1.44**

GIANT  
CHEER  
**\$1.99**

CASCADE  
65 OZ.  
**\$2.99**

DAWN  
LIQUID  
QUART  
**\$1.88**

Heavy Duty  
ERA  
Liquid Detergent  
Half Gallon  
**\$3.88**

TIDE  
20 OZ.  
With Free Bounce  
**88¢**

## SWENSEN'S MAGIC MARKETS

Effective Mon., Dec. 30  
Thru Mon., Jan. 6, 1986

628 MAIN AVE. S.

SOUTH PARK  
Just across the bridge

WEST 5 POINTS

PAUL, IDAHO

Weekdays 8-9 P.M.  
Closed Sundays

WEST FIVE POINTS  
OPEN 7 TO 11

### TACO DEAL

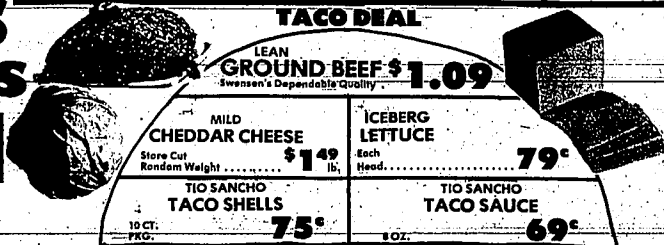
LEAN  
GROUND BEEF **\$1.09**  
Swensen's Dependable Quality

MILD  
CHEDDAR CHEESE  
Store Cut  
Random Weight ..... **\$1.49** lb.

ICEBERG  
LETTUCE  
Each  
Head ..... **79¢**

TIO SANCHO  
TACO SHELLS  
10 CT.  
PKG. .... **75¢**

TIO SANCHO  
TACO SAUCE  
10 OZ. .... **69¢**













Selected offers-Rentals

You've got our number... Buhl, Castleford

5 4 3 Toll Free 4 6 4 8

Toll Free Disc Free

007-Jobs of Interest... LOSE WEIGHT & Earn Money with the acclaimed...

007-Jobs of Interest... WANTED: Carpoolist Send Sample to P.O. Box 170...

008-Sales People... IMMEDIATE OPENINGS National Corp. will be interviewing...

017-Business Opps... MONEY MAKING SCHEME ROUTES Work 1 day a week...

030-Homes For Sale... BY OWNER: Newer 3 bdrm, 1 1/2 bath, double car garage...

038-Acreages & Lots... BRICK HOME on 1 acre with 3 bdrms, 1 bath, basement...

051-Unfurn. Homes... LARGE 3 bdrm home on 1/2 acre, 3300 sq ft...

062-Furn. Apt. & Dup... LOOKING FOR A HOUSE OR APARTMENT? Call Quill's...

064-Unfurn. Apts. & Duplexes... CLEAN 2 Bdrm Duplex with attached garage...

1 ROUTE AVAILABLE IN TWIN FALLS... All of 6th Avenue North and All of 7th Avenue North...

1 ROUTE - JEROME... All of 7th Ave. West; All of 8th Ave. West...

100-Professional Services... RN with geriatric experience for one person...

023-Investment... Buy, sell or borrow against real estate collateral...

HAMLETT REALTY OFFICE... For Sale: Rani or Loose: Large Family Home...

039-Business Property... IN SE Boise Family Park 1900 Governor...

043-Vacation Property... 45-Mobile Homes... AFFORDABLE at 24th. Ideal for school...

Rentals... AFFORDABLE at 24th. Ideal for school. Bedroom with yard...

050-Furnished Homes... AFFORDABLE at 24th. Ideal for school. Bedroom with yard...

1 ROUTE - JEROME... All of 7th Ave. West; All of 8th Ave. West...

015-Babysitters... AAA Magic Valley Day Care Association...

010-Professional Services... RN with geriatric experience for one person...

023-Investment... Buy, sell or borrow against real estate collateral...

HAMLETT REALTY OFFICE... For Sale: Rani or Loose: Large Family Home...

039-Business Property... IN SE Boise Family Park 1900 Governor...

043-Vacation Property... 45-Mobile Homes... AFFORDABLE at 24th. Ideal for school...

Rentals... AFFORDABLE at 24th. Ideal for school. Bedroom with yard...

050-Furnished Homes... AFFORDABLE at 24th. Ideal for school. Bedroom with yard...

TWIN FALLS 2 ROUTES AVAILABLE... The 1st Route is - All of James; Filtr Apts...

015-Situations Wanted... House cleaning, small amount house house duties...

010-Professional Services... RN with geriatric experience for one person...

023-Investment... Buy, sell or borrow against real estate collateral...

HAMLETT REALTY OFFICE... For Sale: Rani or Loose: Large Family Home...

039-Business Property... IN SE Boise Family Park 1900 Governor...

043-Vacation Property... 45-Mobile Homes... AFFORDABLE at 24th. Ideal for school...

Rentals... AFFORDABLE at 24th. Ideal for school. Bedroom with yard...

050-Furnished Homes... AFFORDABLE at 24th. Ideal for school. Bedroom with yard...

Sports minded?... Beautiful 2 story w/3 plus bdrms, 2 baths...

015-Situations Wanted... House cleaning, small amount house house duties...

010-Professional Services... RN with geriatric experience for one person...

023-Investment... Buy, sell or borrow against real estate collateral...

HAMLETT REALTY OFFICE... For Sale: Rani or Loose: Large Family Home...

039-Business Property... IN SE Boise Family Park 1900 Governor...

043-Vacation Property... 45-Mobile Homes... AFFORDABLE at 24th. Ideal for school...

Rentals... AFFORDABLE at 24th. Ideal for school. Bedroom with yard...

050-Furnished Homes... AFFORDABLE at 24th. Ideal for school. Bedroom with yard...

Service Directory

ADVERTISE YOUR SERVICE SPECIALTY IN THIS DIRECTORY... All T/REBUILDING... AFF/REBUILDING...

ADVERTISE YOUR SERVICE SPECIALTY IN THIS DIRECTORY... CARPENTER... CARPET CLEANING...

ADVERTISE YOUR SERVICE SPECIALTY IN THIS DIRECTORY... SNOW REMOVAL... TREE SERVICE...

ADVERTISE YOUR SERVICE SPECIALTY IN THIS DIRECTORY... WALLPAPERING & PAINTING... ADVERTISE YOUR SERVICE SPECIALTY...

ADVERTISE YOUR SERVICE SPECIALTY IN THIS DIRECTORY... WALLPAPERING & PAINTING... ADVERTISE YOUR SERVICE SPECIALTY...

ADVERTISE YOUR SERVICE SPECIALTY IN THIS DIRECTORY... WALLPAPERING & PAINTING... ADVERTISE YOUR SERVICE SPECIALTY...

ADVERTISE YOUR SERVICE SPECIALTY IN THIS DIRECTORY... WALLPAPERING & PAINTING... ADVERTISE YOUR SERVICE SPECIALTY...

ADVERTISE YOUR SERVICE SPECIALTY IN THIS DIRECTORY... WALLPAPERING & PAINTING... ADVERTISE YOUR SERVICE SPECIALTY...

ADVERTISE YOUR SERVICE SPECIALTY IN THIS DIRECTORY... WALLPAPERING & PAINTING... ADVERTISE YOUR SERVICE SPECIALTY...

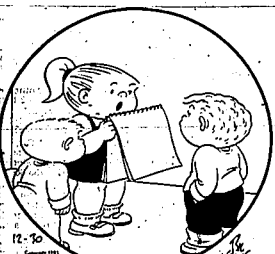


Rentals-Recreational

057-126

GUARANTEED RESULTS OR YOU DON'T PAY

CALL 733-0931 The Times-News \$10.50 DOLLARS 3 LINES 7 DAYS



"Know what? Washington, Lincoln and Jesus were all born on holidays."

070-Appliances... LADY Kenmore electric dryer for sale \$155... ONE YEAR OLD Kenmore gas dryer... Whirlpool Washer & Dryer... White Sears Colport refrigerator...

000-Pets & Supplies... Registered male Yorkshire Terrier pup... 009-Farm Seed... Frost Free Burbank Seed... 097-Hay, Grain & Feed... CORN SILAGE... MANURE PILING...

104-Horses... 2 young brook work teams... 105-Horse Equipment... Kiefer Bull Trailers-Winter Savings... 106-Swine... Outstanding registered Yorkshire boar...

114-Farm Implements... AGME tool bar, both folding and solid... 121-Boats & Access... Always better buys... 122-Sporting Goods... 22 semi automatic rifle for sale...

124-Snow Vehicles... 4 place factory snow machine trailer... 125-Travel Trailers... 1982 40 foot NUWA 5th wheel...

057-Mobile Home Rentals... 12x20 2 Bedroom completely furnished... 058-Office and Business Rental... DELUXE OFFICE SPACE... OFFICE SPACE FOR LEASE...

00K-Miscellaneous... BUNK BEDS, rustic, sturdy... Commercial pin ball machine... WOODSHOP TOOLS... 062-Building Materials... BLACK WALLING slabs...

083-Garage Sales... 086-Firewood... Dry Firewood 733-3266... 098-Farms For Rent... KIMBERLY: Cash Rent-1 acre...

088-Variety Foods... Apples, premium quality... 102-Cattle... Calhoun/Border Collier cross pups... 103-Dairy Equipment... TWELVE TON GRAIN TANK...

105-Farm Work Wanted... MANURE PILING... 115-Farm Ranges... 175-Auto Dealers... 1986 CHEV CELEBRITY 4 DOOR... 1986 CHEV CELEBRITY 4 DOOR... 1986 CHEV CELEBRITY 4 DOOR...

175-Auto Dealers... 1986 CHEV CELEBRITY 4 DOOR... 1986 CHEV CELEBRITY 4 DOOR... 1986 CHEV CELEBRITY 4 DOOR... 1986 CHEV CELEBRITY 4 DOOR... 1986 CHEV CELEBRITY 4 DOOR...

175-Auto Dealers... 1986 CHEV CELEBRITY 4 DOOR... 1986 CHEV CELEBRITY 4 DOOR... 1986 CHEV CELEBRITY 4 DOOR... 1986 CHEV CELEBRITY 4 DOOR... 1986 CHEV CELEBRITY 4 DOOR...

059-Condominiums For Rent... CONDOMINIUM Rock Creek... 067-Miscellaneous... BEST QUALITY fully automatic hospital bed...

072-Antiques... 074-Musical Instruments... Restored Blenders... 077-Radio, TV & Stereo... COLOR Televisions... MOVING: Most sell complete satellite system...

078-Furn. & Carpets... 3 PEDESTAL Duncan Phyfe with 6 chairs... 079-Appliances... 2YEAR OLD 30" White Westinghouse stove...

079-Appliances... 2YEAR OLD 30" White Westinghouse stove... 080-Furn. & Carpets... 2YEAR OLD 30" White Westinghouse stove...

080-Furn. & Carpets... 2YEAR OLD 30" White Westinghouse stove... 081-Furn. & Carpets... 2YEAR OLD 30" White Westinghouse stove...

081-Furn. & Carpets... 2YEAR OLD 30" White Westinghouse stove... 082-Furn. & Carpets... 2YEAR OLD 30" White Westinghouse stove...

082-Furn. & Carpets... 2YEAR OLD 30" White Westinghouse stove... 083-Furn. & Carpets... 2YEAR OLD 30" White Westinghouse stove...

083-Furn. & Carpets... 2YEAR OLD 30" White Westinghouse stove... 084-Furn. & Carpets... 2YEAR OLD 30" White Westinghouse stove...

084-Furn. & Carpets... 2YEAR OLD 30" White Westinghouse stove... 085-Furn. & Carpets... 2YEAR OLD 30" White Westinghouse stove...

085-Furn. & Carpets... 2YEAR OLD 30" White Westinghouse stove... 086-Furn. & Carpets... 2YEAR OLD 30" White Westinghouse stove...

086-Furn. & Carpets... 2YEAR OLD 30" White Westinghouse stove... 087-Furn. & Carpets... 2YEAR OLD 30" White Westinghouse stove...

087-Furn. & Carpets... 2YEAR OLD 30" White Westinghouse stove... 088-Furn. & Carpets... 2YEAR OLD 30" White Westinghouse stove...

088-Furn. & Carpets... 2YEAR OLD 30" White Westinghouse stove... 089-Furn. & Carpets... 2YEAR OLD 30" White Westinghouse stove...

089-Furn. & Carpets... 2YEAR OLD 30" White Westinghouse stove... 090-Furn. & Carpets... 2YEAR OLD 30" White Westinghouse stove...

090-Furn. & Carpets... 2YEAR OLD 30" White Westinghouse stove... 091-Furn. & Carpets... 2YEAR OLD 30" White Westinghouse stove...

091-Furn. & Carpets... 2YEAR OLD 30" White Westinghouse stove... 092-Furn. & Carpets... 2YEAR OLD 30" White Westinghouse stove...

092-Furn. & Carpets... 2YEAR OLD 30" White Westinghouse stove... 093-Furn. & Carpets... 2YEAR OLD 30" White Westinghouse stove...

093-Furn. & Carpets... 2YEAR OLD 30" White Westinghouse stove... 094-Furn. & Carpets... 2YEAR OLD 30" White Westinghouse stove...

094-Furn. & Carpets... 2YEAR OLD 30" White Westinghouse stove... 095-Furn. & Carpets... 2YEAR OLD 30" White Westinghouse stove...

095-Furn. & Carpets... 2YEAR OLD 30" White Westinghouse stove... 096-Furn. & Carpets... 2YEAR OLD 30" White Westinghouse stove...

096-Furn. & Carpets... 2YEAR OLD 30" White Westinghouse stove... 097-Furn. & Carpets... 2YEAR OLD 30" White Westinghouse stove...

097-Furn. & Carpets... 2YEAR OLD 30" White Westinghouse stove... 098-Furn. & Carpets... 2YEAR OLD 30" White Westinghouse stove...

098-Furn. & Carpets... 2YEAR OLD 30" White Westinghouse stove... 099-Furn. & Carpets... 2YEAR OLD 30" White Westinghouse stove...

099-Furn. & Carpets... 2YEAR OLD 30" White Westinghouse stove... 100-Furn. & Carpets... 2YEAR OLD 30" White Westinghouse stove...

100-Furn. & Carpets... 2YEAR OLD 30" White Westinghouse stove... 101-Furn. & Carpets... 2YEAR OLD 30" White Westinghouse stove...

101-Furn. & Carpets... 2YEAR OLD 30" White Westinghouse stove... 102-Furn. & Carpets... 2YEAR OLD 30" White Westinghouse stove...

102-Furn. & Carpets... 2YEAR OLD 30" White Westinghouse stove... 103-Furn. & Carpets... 2YEAR OLD 30" White Westinghouse stove...

103-Furn. & Carpets... 2YEAR OLD 30" White Westinghouse stove... 104-Furn. & Carpets... 2YEAR OLD 30" White Westinghouse stove...

LOOK! 1986 CHEV CELEBRITY 4 DOOR \$11,798.00 GON PAULOS CHEVROLET PONTIAC & GMC TRUCKS

THE ACES BOBBY WOLFF... Men, like nails, lose their usefulness when they lose direction... 1986 CHEV CELEBRITY 4 DOOR \$12,482.00

LOOK! 1986 CHEVROLET NOVA \$8680.00 NOW \$7551.00 GON PAULOS CHEVROLET PONTIAC & GMC TRUCKS

YOUR LAST CHANCE TO SAVE ON 1985 MODELS... 1985 SUBARU GL-10 FWD WAGON \$11,293... 1985 SUBARU XT COUPE \$11,644

FREE INTEREST FOR ONE FULL YEAR! WATSON'S Furniture & Waterbeds

# Recreational-Automotive

## 127-175

**127-Motor Homes**

HAVE CASH would like to buy cheap motor home. Right price. 788-3874.

Rental Motor Homes. Clean, private. Call 338-3383 or after 5:30 call 338-3383.

Call-Car Care-734-3383 or after 5:30 call 338-3383.

1984 CHEVY Arrow for rent. Steps 7. Affordable luxury. Call 678-540, after 5.

**Automotive**

**332-Auto Parts & Accessories**

FORD 16" 8 hole split rimmed wheels. Excellent cond. \$40 each. 734-7703.

**133-Autos Wanted**

WANT TO BUY 1959 Buellac. Call 1-532-4383, Paul.

**135-Cycles & Supplies**

1980 CanAm 400 MX6 runs good, must sell, \$600. Call 824-4249.

1983 Honda Big Red, lots of extras, \$1350. Call 542-8207.

**136-Heavy Equipment**

88 46A Caterpillar w/ hydraulic ripper dozer, BB 1980 1/2 cubic dozer. Call 878-8283.

CASE 580-C Backhoe, Good condition. Reasonable price. Will trade. Bill Loughmiller, 733-5761.

**JOHN DEERE USED INDUSTRIAL EQUIPMENT**

Used JD 401 C loader tractor \$15,500

Used Michigan Model 85A. \$18,500

Ford Model A-62 Loader. \$34,500

**ELLIOTT INDUSTRIAL CO.**

Intersection Hwy 93 & I-84, Jerome, ID 324-2800

Toll Free 1-800-432-2900

Bob Houston, Sales Rep. Home Phone 733-1490

**140-Trucks**

WANTED TO BUY: 16'10" Box & Grain Bed with hoist. 734-8988 Mon-Fri, 8:30-5:30

1974 Mazda PU, 4 sp, new tires, exc cond. \$1250. Call 324-3944 after 5 PM.

1976 CHEVY 1/2 ton pickup with shell. Call 734-9089.

1978 Ford 1/2 Ton Pick-up F100. 392 engine, light blue, \$2800. Call 537-8861.

1981 VW diesel PU, new studded radials, camper shell, AM/FM case. \$2800. Call 788-5513.

1981 1800 (S series) International, V8, Allison Auto, 84, low miles, exc cond. \$24-8888 or 324-3456.

1982 F-350 Ford, dual rear wheels, 10' ton bed, w/leak aids, new tires, excellent cond. 324-3456 or 324-8800.

1982 GMC 1/2 ton, 4 sp, 5-2 dial, detrol, exc cond. 543-8581 after 7PM or 543-5143.

**141-Vans**

1985 DODGE MINI-VAN loaded, low miles, exc cond. Call 733-0410 eyes.

**142-Import Sports Cars**

1978 MGB, red wiretops, chrome wheels, lots of extras. \$4500. Call 734-4844.

1981 Sprinter air radio case, autounlocking 50 MPG! \$5995. Call 324-5048 anytime.

**143-4 Wheel Drives**

1982 International Scout 4 Wheel Drive. Call 328-3914.

1974 CHEVY 3/4 ton 4x4 Good condition, \$2500/will take partial trade on snow tires. 423-2442 anytime.

1972 JEEP CJ-5, V8, needs some body work, runs good. \$300. Call 338-3383.

1978 Dodge Ram Charger, AC, PS, 6. \$2000. Call 423-4253 after 6 pm.

1985 DODGE MINI-VAN loaded, low miles, exc cond. Call 733-0410 eyes.

**146-4 Wheel Drives**

1978 Subaru Brat 4 Wheel Drive. 13700 or best offer. Call 328-3914.

1979 JEEP WAGONER 73,000 mi, exc cond. Low price. \$2500. Call 338-3383.

1981 Toyota, chrome wheels, row bar, push bar, w/white and bumpers, sun roof. 5 spd. New clutch, exc cond. Call 324-4164.

1984 Chevy S10 4 x 4, 18,000 miles. V8 Durango, PS, PB. 4 spd Auto. \$2500. 733-2297.

1984 BRONCO, blue and silver, low miles, good condition. Call 733-2599.

1984 GMC 4x4 6.2 diesel. Loaded, new radials, warranty. \$12,000. 733-3168.

1985 CHEVY Blazer, fully loaded. Call days, 733-0748 or eve 5, 423-6181.

84 CHEVROLET 1/2 ton 4x4, 454, III kit, Mud Hog tires. Call 324-8620.

84 Ford 4x4 150, low mileage, lock out hubs, 390, 6 cylinder engine, 37800, Call 733-0281. Finest Center of 733-9160.

**148-4 Wheel Drives**

1981 BRONCO, AC, PS, 84 speed, 2 tone paint, lots of extras. A-1 condition. Call 1-438-4800 days.

83 Ford F250, 4 x 4, 4 spd, 80000, exc cond. Call 438-2811 at Goode Motors.

**152-Autos-Buick**

1981 Buick Skylark, 6-cyl front wheel drive, Air, AI, just tuned, good cond. \$3495 or offer. 734-2477.

**154-Autos-Cadillac**

1976 CADILLAC SEVILLE: 1 owner, loaded, exc cond. Call 538-2359.

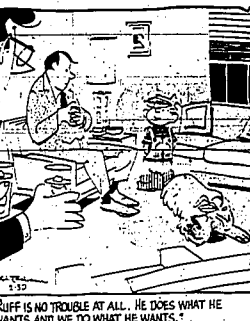
**158-Autos-Chevrolet**

1978 Monte Carlo, AC, PS, PB, runs well. Call 734-2726 8-10 am or after 6 pm.

**160-Autos-Dodge**

1985 DODGE Dakota; loaded - Equity and take over payments. Call 734-3772.

84 Dodge Aries Wagon, low miles/gas mileage. Best offer. Nice Car. 733-6348.



"RUFF IS NO TROUBLE AT ALL. HE DOES WHAT HE WANTS AND WE DO WHAT HE WANTS."

**LOOK!**

1986 CHEV SPECTRUM 4 DOOR  
5 speed manual, radial tires, cloth interior and more!

WAS \$8183.00

Now \$6995.00

CON PAULOS CHEVROLET PONTIAC & GMG TRUCKS

324-4318 718 LINCOLN JEROME 734-6565

**DICK DEY'S LEASING**

**1986 ISUZU PUP PICKUP**

\*186.44: Steel back radials, power assist front disc brakes, full size spare, 4 speed manual transmission, dual sport mirrors, 1.9 liter gas engine.

60 month class and lease, total due at end, \$219.00, total of payments \$792.60, \$6000 mile limit, \$6 penalty per mile, O.A.C.

**ONLY \$117.51 per mo.**

**DICK DEY**

Oldsmobile • BUICK • ISUZU

712 MAIN AVÉ. E. TWIN FALLS 733-8721

# DICK DEY'S YEAR-END CLEARANCE

\*\*\*\*\*

★ 113 NEW OLDSMOBILE AND BUICKS TO CHOOSE FROM ★

\*\*\*\*\*

JUST ANNOUNCED

**7.9% APR**

On Select Oldsmobiles and Buicks

All Oldsmobiles and Buicks Now

Check the many ways to own an Oldsmobile, Buick or Isuzu. Purchase, lease, no down payment purchase.

**10% OFF**

Sticker Price

Till Dec. 31 Only

## ALL USED CARS SLASHED FOR YEAR-END CLEARANCE!

1972 CHEVY VEGA 2 DOOR Was \$695	Now \$385
1975 DODGE MONACO 4 DOOR Was \$795	Now \$485
1974 FORD STATION-WAGON Was \$995	Now \$485
1971 VOLKSWAGEN BUG Was \$1295	Now \$685
1971 AUDI SL100 4 DOOR Was \$1195	Now \$785
1977 FORD LTD 2 DOOR Was \$1595	Now \$985
1972 PONTIAC CATALINA 4 DOOR Was \$1795	Now \$985
1978 CHRYSLER CORDOBA 2 DOOR Was \$2995	Now \$1985
1978 BUICK SKYLARK 2 DOOR Was \$2795	Now \$1985
1977 DODGE CHARGER 2 DOOR Was \$2995	Now \$1985
1978 CHEVY MONTE CARLO 2 DOOR Was \$3295	Now \$2785
1978 HONDA ACCORD 4 DOOR Was \$3495	Now \$2585
1977 PONTIAC PHONEIX 2 DOOR Was \$3495	Now \$2785
1980 PLYMOUTH TC3 2 DOOR Was \$4295	Now \$3385
1981 VW RABBIT 4 DOOR Was \$4995	Now \$3485
1979 PONTIAC GRAN PRIX Was \$4995	Now \$3985
1983 MERCURY LYNX 3 DOOR Was \$4695	Now \$3985
1982 BUICK SKYLARK 2 DOOR Was \$4295	Now \$3485
1983 DODGE ARIES 2 DOOR Was \$5995	Now \$4485
1979 CHEVY Z28 Was \$5995	Now \$4985
1983 CHEVY CAPRICE 4 DOOR Was \$8395	Now \$6385
1981 BUICK SKYHAWK 2 DOOR Was \$7995	Now \$6885
1983 FORD LTD 4 DOOR Was \$7995	Now \$6485
1980 DATSUN 2 DOOR Was \$11,495	Now \$7685
1984 OLDSMOBILE 88, 4 DOOR Was \$11,495	Now \$9685
1985 OLDSMOBILE TORONADO Was \$18,995	Now \$17,985
1966 OLDSMOBILE DYNAMIC 88 2 Door Original Was \$7995	Now \$685
1969 FORD 1/2 TON PICKUP Was \$995	Now \$685
1983 FORD RANGER-PICKUP Was \$5995	Now \$4985
1984 ISUZU PICKUP Was \$6995	Now \$5985
1984 TOYOTA PICKUP Was \$6995	Now \$6185
1984 ISUZU LS PICKUP Was \$7495	Now \$6485
1981 CHEVY G20 CARGO VAN Was \$7995	Now \$6485
1985 ISUZU 4X4 PICKUP Was \$7995	Now \$6985

# DICK DEY

Oldsmobile • BUICK • ISUZU

712 MAIN AVÉ. E. TWIN FALLS 733-8721

# SPRING

# '86



## *College of Southern Idaho*

Divisions of  
Academic and  
Vocational Education

**INCLUDES COURSES OFFERED BY:**

*The College of Idaho  
Idaho State University  
Lewis-Clark State College*

Registration, 8:30 A.M.-8:00 P.M. ....	January 8-10
In-Service Workshop for Faculty .....	January 6-7
Residence Hall Opens 1 P.M. ....	January 9
Late Registration Begins .....	January 13-24
Classes Commence .....	January 13
Last Day for Late Enrollment .....	January 24
Last Day for 75% Withdrawal Refund .....	January 24
Last Day for 50% Withdrawal Refund .....	January 31
Washington's Birthday (Holiday) .....	February 17
End of Mid-Semester .....	March 7
Spring Vacation .....	March 15-23
Resident Hall Closed for Spring Vacation .....	March 15-22
Semester Examinations .....	May 5-8
Commencement, 8:00 P.M. ....	May 9
Resident Hall Closes, 6:00 P.M. ....	May 8

● ● ● ● ●

### CAREER GUIDANCE AND COUNSELING

Career counseling services are available to all CSI students and other people who are considering continuing their education. To take full advantage of those services, prospective, new, and returning students who are undecided about a career direction should make an appointment to see a counselor prior to the week of registration. That contact would give students the advantage of discussing, in detail, future planning before making a final choice of classes or a vocational training program when registering.

If you are undecided about an academic major or need career guidance in that area, please contact the academic counseling office in the Taylor Administration Building. The phone number is 733-9554, ext. 214. If you are interested in a vocational program, but need assistance in determining the most appropriate career direction, please contact the vocational counseling office in the Vocational Center. The phone number is 733-9554, ext. 293. Counseling staff will be available from 8:00 a.m. to 4:30 p.m. daily to assist you.

Please note that your class schedule will be determined with your faculty advisor or a faculty representative from your major department during the week of registration.

#### Academic Counselors

Ann Ferrell  
Ned Vaughn

#### Vocational Counselors

Jim Palmer  
Karyl Myers  
Keith Ferrell  
Gary Mejer

● ● ● ● ●

### STUDENT SUPPORT SERVICES

Counseling is available to all students. Appointments are suggested. Counseling hours are from 8 a.m. to 4 p.m. Monday through Friday. Any citizen in the community may avail themselves of the counseling services of the college. Listed below are the members of the counseling staff and their respective locations:

N. Robert Wright  
David Perkins  
Ann Ferrell  
Ned Vaughn  
Graydon Stanley  
Keith Ferrell  
Gary Mejer  
Karyl Myers  
Jim Palmer  
Rita Larson  
Madison Kchtz  
Paula Hollifield

Registration, Admission and Records  
Financial Aids  
Academic Counselor  
Academic/Veterans Counselor  
H.S. Relations/Advisor  
Vocational Counselor  
Vocational Counselor  
Vocational Counselor  
Counselor for Disabled Students  
Center for New Directions  
Center for New Directions  
International Student Advisor

Taylor Building  
Taylor Building  
Taylor Building  
Taylor Building  
Taylor Building  
Vo-Tech Center  
Vo-Tech Center  
Vo-Tech Center  
Vo-Tech Center  
Center for New Directions  
Center for New Directions  
Fine Arts Lobby

● ● ● ● ●

### REGISTRATION INFORMATION FOR FALL SEMESTER, 1986

#### BEFORE YOU REGISTER FOR ACADEMIC OR VOCATIONAL CREDIT COURSES:

- STEP A.** Apply for admission if you are: (1) A new CSI Student or (2) A returning student (after an absence of one or more semesters). Send all admission materials to the CSI Records Office.
- STEP B.** If you are a degree-seeking or certificate-seeking student, have the following items sent to the CSI Records Office: (1) High School Transcript, (2) ACT, SAT, GED, or GATB scores, and (3) College transcript. NOTE: ACT or SAT scores are not required for admission except for Registered Nursing. However, they are strongly recommended to help in student advising.
- STEP C.** All new CSI students who are degree-seeking or certificate seeking students, whether part-time or full-time, must take the CSI Skills Assessment. Students with vocational majors must also take the GATB. EXCEPTION: Transfer students with passing grades in math and English will not have to take the CSI Skills Assessment. THESE TESTS SHOULD BE TAKEN AT THE CSI STUDY SKILLS CENTER PRIOR TO REGISTRATION. CALL 733-9554, EXT. 351 FOR TEST APPOINTMENT. HOURS AND DAYS THE SKILLS CENTER WILL BE OPEN FOR TESTING:

*"No County shall be liable for out-of-district tuition unless the Board of County Commissioners of the County has first verified to the Junior College in writing the fact that the student is a resident of the County"*

and

*"A resident student is any student whose parents or court appointed guardians are domiciled in the Junior College district and provide more than fifty percent (50%) of his support"*

- Step A. Students will meet with advisors located in the cafeteria of the Taylor Building. Check with your advisor (a faculty person in the department of your major) fill out your registration form. Your class schedule will be arranged at that time.
- Step B. After schedules are arranged, students will proceed to the computer terminals to register for classes. These terminals are located in the Records Office on the main floor of the Taylor Administration Building.
- Step C. After classes are registered on terminals, each new student will receive a student ID card in the Records Office.
- Step D. After receiving their ID cards, students will take their registration packets to the Business Office for payment of tuition and fees. The Business Office is located on the main floor of the Taylor Administration Building.
- Step E. After payment of tuition and fees, take copy of class schedule to the Bookstore to buy books and supplies.

### VOCATIONAL STUDENTS

- STEP A. Students will meet with advisors located in the Vocational Center. Check with your advisor (a faculty person in the department of your major) and make an appointment to fill out your registration form. Your class schedule will be arranged at that time.
- STEP B. After schedules are arranged, students will proceed to the computer terminals to register. These terminals are located in the Vocational Center.
- STEP C. After classes are registered on terminals, each new student will receive a ID card in the Taylor Administration Building.
- STEP D. After receiving their ID cards, students will take their registration packets to the Business Office for payment of tuition and fees. The Business Office is located on the first floor of the Taylor Administration Building.
- STEP E. After payment of tuition and fees, take copy of class schedule to the Bookstore to buy books and supplies.

### REGISTRATION PROCEDURES FOR CONTINUING EDUCATION NON CREDIT COURSES

- STEP A. All students are encouraged to register for non-credit classes as soon as possible after the official schedule of classes is made available.
- You can register for all non-credit courses in one of the following methods:
- In person at the Records office located on the first floor of the Taylor Administration Building on the CSI Campus.
  - In person, at the Burley Extension Center, 2227 Overland, Burley, Idaho.
- WARNING: If you do not register and pay your fees in advance, available space in the course can not be guaranteed.
- STEP B. FOR INFORMATION, call 733-9554 and ask for the appropriate extension:
- |                                 |          |
|---------------------------------|----------|
| Adult Basic Education .....     | ext. 384 |
| Adult Enrichment .....          | ext. 384 |
| Center for New Directions ..... | ext. 381 |
| Kollege for Kids .....          | ext. 383 |
| Trade and Industrial .....      | ext. 290 |
- STEP C. Check the Continuing Education Spring Schedule for times and date for registration.

### SCHEDULE FOR SPRING REGISTRATION, 1986 (Academic and Vocational Credit Courses)

#### FIRST PRIORITY

CONTINUING STUDENTS who attended the College of Southern Idaho during the Fall Session of 1985 should register Wednesday, January 8 from 8:00 a.m. to 6:00 p.m.

#### SECOND PRIORITY

NEW AND RETURNING STUDENTS who did not attend Fall Session 1985 and who have completed all admission and testing requirements will register Thursday or Friday January 9 or 10 from 8:00 a.m. to 6:00 p.m.

### REFUNDS

Refunds of tuition will be made only when the students have completed withdrawal procedures with their counselors. Refunds are made according to the following:

- Refunds of 100% — less \$10 prior to January 13
- Refunds of 75% — prior to January 27
- Refunds of 50% — prior to February 10
- No refunds for non-credit Continuing Education classes after class starts.

### TUITION AND FEES

	In-District	Out-of-State	Foreign
1 Credit	\$ 39.20	76.70	81.70
2 Credits	78.40	153.40	163.40
3 Credits	117.60	230.10	245.10
4 Credits	156.80	306.80	326.80
5 Credits	196.00	383.50	408.50
6 Credits	235.20	460.20	490.20
7 Credits	274.40	536.90	571.90
8 Credits	313.60	613.60	653.60
9 Credits	352.80	690.30	735.30
10 Credits	392.00	767.00	817.00

Students living outside of Twin Falls or Jerome counties but within the State of Idaho will be charged out-of-district fees in addition to the regular tuition and fee cost. The students home County may pay the out-of-district fee providing the student meets the requirements of Section 33-2110A and 33-2110B of the Idaho Code in all respects. Excerpts from the Code are as follows:

A completed Certificate of Residency is required from all out-of-district students. If certification is not received the student will be required to pay the fee normally charged to the County. A new certificate must be obtained each year that you attend the College of Southern Idaho.

The Certificate of Residency blanks are available from the College Business Office, counseling offices, and most County Commissioners' offices. Each out-of-district student should obtain Certification from their County Commission.

#### COUNTY CHARGES

1 Credit	\$ 37.50	6 Credits	\$225.00
2 Credits	75.00	7 Credits	262.50
3 Credits	112.50	8 Credits	300.00
4 Credits	150.00	9 Credits	337.50
5 Credits	187.50	10 Credits	375.00

#### VETERANS

To receive G. I. Benefits you will need the following:

##### New Veterans:

1. A completed application form, VA Form 1990
2. A certified copy of your discharge paper, Form DD-214
3. A certified copy of your marriage licence and copies of your child(ren)'s birth certificates, if either you or your spouse were previously married.
4. High School Transcript or G.E.D. scores.
5. Transcripts from all colleges or universities you previously attended.

##### Transfer Veterans:

1. Your VA file number (Claim Number).
2. A completed VA Form 1995 requesting a transfer to place of training or change of program.

#### KEY FOR FOOTNOTES

DA Students need departmental approval before they can register for course.

HU Course will count towards the Humanities General Education Requirements.

MS Course will count towards the Math/Science General Education Requirements.

SS Course will count towards the Social Science General Education Requirements.

VC Course has variable credit, check additional sections for alternative number of credits.

ID Course is taught on an individualized basis.

SP Course taught in Spanish.

#### FINAL EXAM SCHEDULE

May 5, 6, 7, 8, 1986

HOUR	MONDAY	TUESDAY	WEDNESDAY	THURSDAY
8-10	8 MW 8 MWF 8 MTWF 8 MTWThF	8 TTh 8:30 TTh	9 MW 9 MWF 9 MTWF 9 MWThF 9 MTWThF	9 TTh
10-12	10TTh	10 MW 10 MWF 10 MTWF 10 MTWThF	11 TTh 11 MTWF	11 MW 11 MTWTh 11 MWF 11 MTWThF
12-2	12 MW 12 MWF 12 MTWF	1 TTh	1 M 1 MWF 1 MTWF 1 MWThF 1 MTWThF	1 W
2-4	2 MTWThF	2 MW 2 MWF 2 MWThF	3 W	2 TTh
6-8		6 T 6 TTh		
8-10	7 MW 7 M	7 T 7-TTh	7 W	7 Th

REGISTRATION DATES: WEDNESDAY, JANUARY 8 — THURSDAY, JANUARY 9 — FRIDAY, JANUARY 10, 1988

8:30 A.M. — 6:00 P.M.

SECT. NO.	COURSE TITLE AND NO.	DAYS	TIME	COURSE DESCRIPTIONS	CR.	INSTRUCTOR	LOC.	PRE REG	FEE	FOOTNOTES
--------------	-------------------------	------	------	---------------------	-----	------------	------	------------	-----	-----------

# ACADEMIC SPRING 1986

## AGRICULTURE DEPARTMENT

6164	AC	231	M W	7:00-10:00PH	BASIC HORSESHOEING	1.0	ROBINETTE J	EXPOSITION		DA
6165	AC	233	M W	7:00-10:00PH	1/13/86 To 1/29/86 HORSE HUSBANDRY	3.0	STONE L	EXPOSITION		DA
6166	AC	237	MT TH	7:00-10:00PH	1/13/86 To 3/05/86 COLT TRAINING	3.0	MATTHEWS C	EXPOSITION		
6168	AC	245	T TH	7:00-10:00PH	3/23/86 To 5/01/86 REC/DRG OF HORSE	3.0	LITWNER C	EXPOSITION		
					3/11/86 To 2/27/86			EXPOSITION		

## BUSINESS DEPARTMENT

(Accounting \* Banking \* Business Administration \* Economics \* Real Estate)

4037	ACCT	201	TWTH	11:00-11:50AM	PRIN OF ACCOUNTING	3.0	HAMILTON T	SHIELDS	205 *	
4038	ACCT	201	MTWTH	12:00-12:50PH	PRIN OF ACCOUNTING	3.0	HAMILTON T	SHIELDS	205 *	
4039	ACCT	202	M W	8:00- 9:30AM	PRIN OF ACCT/B	3.0	HEINER D	BURLEY OFFICE		
4040	ACCT	202	MTWTH	9:00- 9:50AM	PRIN OF ACCOUNTING	3.0	SILVERHAYES	SHIELDS	205 *	
4041	ACCT	202	MTWTH	10:00-10:50AM	PRIN OF ACCOUNTING	3.0	SILVERHAYES	SHIELDS	205 *	
4042	ACCT	202	T	6:30- 9:30PH	PRIN OF ACCOUNTING	3.0	SILVERHAYES	SHIELDS	205 *	
6001	ACCT	202	T	7:00-10:00PH	PRIN OF ACCT/B	3.0	DEMPSEY R	BURLEY OFFICE		
6002	ACCT	202E	M W	6:30- 9:30PH	PRIN OF ACCOUNTING	3.0	HURLEY J	SHIELDS	110	
6003	ACCT	206	Time to be announced		5PCL TOPICS/ACCOUNT	3.0	SILVERHAYES	SHIELDS	TBA	
6214	BA	101	M W F	10:00-10:50AM	INTRO TO BUSINESS	3.0	HAMILTON T	SHIELDS	TBA	
6215	BA	160	T TH	8:00- 9:30AM	INTRO MAT/PRDDB	3.0	HEINER D	BURLEY OFFICE		
6216	BA	199	T	6:30- 9:30PH	COMPUTER FOR BANKING	2.0	HURLEY J	SHIELDS	TBA	
6217	BA	200	MTWTHF	8:00- 9:50AM	BUSINESS PRACTICUM	3.0	HURLEY J	SHIELDS	104 *	
6218	BA	213	M W F	8:00- 9:50AM	BUS COMP SYSTEMS	3.0	HAMILTON T	SHIELDS	210 *	
6219	BA	215	T	6:30- 9:00PH	BUS COMP SYSTEMS	3.0	PRETTI J	VOTECH	D 112	
6220	BA	265	MT TH	7:00-10:00PH	LEGAL ENVIRONMENT/R	3.0	BENCOEDER S	SHIELDS	D 104	
6221	BA	265	M W F	7:00-10:00PH	LEGAL ENVIRONMENT/R	3.0	HEINER D	BURLEY OFFICE		
6232	BA	285	MT THF	2:00- 4:30PH	COMP EDUCATION	3.0	HURLEY J	SHIELDS	208	
6238	BKNC	101	M W	7:00-10:00PH	PRIN OF BANKING	3.0	STAFF	SHIELDS	208 *	
6239	BKNC	101E	W	7:00-10:00PH	PRIN OF BANKING	3.0	STAFF	SHIELDS	208 *	
6240	BKNC	105	TH	7:00-10:00PH	NEGOTIABLE INSTRUMN	3.0	STAFF	SHIELDS	208 *	
6241	BKNC	105E	T TH	7:00-10:00PH	NEGOTIABLE INSTRUMN	3.0	STAFF	SHIELDS	208 *	
6408	ECON	201	M	7:00-10:00PH	PRIN OF ECONOMICS	3.0	CLENN H	SHIELDS	207	
6409	ECON	202	M W F	9:00- 9:50AM	PRIN OF ECONOMICS	3.0	HURLEY J	SHIELDS	118 *	
6410	ECON	202	M W F	11:00-11:50AM	PRIN OF ECONOMICS	3.0	HURLEY J	SHIELDS	118 *	
6411	ECON	202	M W F	7:00-10:00PH	PRIN OF ECONOMICS/B	3.0	HURLEY J	SHIELDS	118 *	
7227	RE	101	MTW	8:00- 5:00PH	ESSENTIALS OF RE	3.0	HEIST C	BURLEY OFFICE		49.90
			AND WTHF	8:00- 5:00PH				BURLEY OFFICE		
					3/10/86 To 3/21/86			BURLEY OFFICE		
6754	RE	101	M TH	7:00-10:00PH	ESSENTIALS OF RE	3.0	BRAWLEY J	SHIELDS	116	12.40
6755	RE	102	TWTHF	8:00- 5:00PH	1/13/86 To 3/03/86			SHIELDS	116	
6756	RE	102	TWTHF	8:00- 5:00PH	REAL ESTATE LAW	2.0	HAY JD	SHIELDS	117	51.60
6757	RE	103	TWTHF	8:00- 5:00PH	2/25/86 To 2/28/86			SHIELDS	117	
6758	RE	103	TWTHF	8:00- 5:00PH	REAL ESTATE FINANCE	2.0	CLIFTON	SHIELDS	117	51.60
6759	RE	104	TWTHF	8:00- 5:00PH	4/01/86 To 4/04/86			SHIELDS	117	
6759	RE	104	TWTHF	8:00- 5:00PH	REAL EST MARKETING	2.0	HORTON L	SHIELDS	117	51.60
6758	RE	105	TWTHF	8:00- 5:00PH	4/15/86 To 4/18/86			SHIELDS	117	
6759	RE	110	TWTHF	8:00- 5:00PH	REAL EST APPRAISAL	2.0	HEIST C	SHIELDS	117	51.60
					2/04/86 To 2/07/86			SHIELDS	117	
					BROKERAGE ADMIN	2.0	HEIST C	SHIELDS	117	51.60
					3/06/86 To 5/09/86			SHIELDS	117	

## ENGLISH AND FOREIGN LANGUAGE DEPARTMENT

(English \* French \* German \* Philosophy \* Spanish)

6422	ENCL	020	T TH	10:00-11:30AM	ENGLISH COMPOSITION	3.0	SLIFER B	SHIELDS	109	
6423	ENCL	020	M W F	10:00-11:30AM	ENG TRUCK DISES	3.0	SLIFER B	VOTECH	D 112	
6424	ENCL	020	T TH	11:00-12:30PH	2/03/86 To 4/11/86			SHIELDS	103	
6425	ENCL	020	T TH	1:00- 2:30PH	DEVELOPMENT ENGLISH	3.0	CRANE HR	SHIELDS	103	
6429	ENCL	101	M W F	7:30- 9:00AM	ENGLISH COMP ASEP	3.0	SLIFER B	SHIELDS	103	
6426	ENCL	101	M W F	8:00- 8:50AM	4/14/86 To 6/13/86			SHIELDS	103	
6429	ENCL	101	T TH	8:30-10:00AM	ENGLISH COMPOSITION	3.0	DUNCAN T	SENIOR ANNEX		
6428	ENCL	101	M W F	8:00- 9:50AM	ENGLISH COMPOSITION	3.0	STAFF	BURLEY OFFICE		
6430	ENCL	101	M W F	10:00-11:40AM	ENGLISH COMPOSITION	3.0	DUNCAN T	BURLEY ANNEX		
6431	ENCL	101	M W F	8:00- 9:50AM	ENGLISH COMP (ASEP)	3.0	SLIFER B	VOTECH	D 112	
6432	ENCL	101	M W F	11:00-11:50AM	4/14/86 To 6/13/86			VOTECH	D 112	
6432	ENCL	101	M W F	11:00-12:50PH	ENGLISH COMPOSITION	3.0	ARMSTRONG K	SHIELDS	103	
6433	ENCL	101	M W F	2:00- 2:50PH	ENGLISH COMPOSITION	3.0	ARMSTRONG K	SHIELDS	103	
6434	ENCL	101	T	7:00-10:00PH	ENGLISH COMPOSITION	3.0	DUNCAN T	SHIELDS	103	
6435	ENCL	102	Time to be announced		ENGLISH COMP/R	3.0	RUMSEY S	BURLEY OFFICE		
6437	ENCL	102	T TH	8:30-10:00AM	ENGLISH COMP (ASEP)	3.0	ARMSTRONG K	SHIELDS	TBA	
6438	ENCL	102	T TH	8:30-10:00AM	ENGLISH COMPOSITION	3.0	ARMSTRONG K	SHIELDS	107 *	
6436	ENCL	102	M W F	9:00- 9:50AM	ENG COMP/COMP ASST	3.0	STUDEBAKER B	VOTECH BLDG	131	
6440	ENCL	102	M W F	10:00-10:50AM	ENGLISH COMPOSITION	3.0	PETTINGER D	SHIELDS	103 *	
6439	ENCL	102	M W F	10:00-10:50AM	ENGLISH COMPOSITION	3.0	STUDEBAKER B	SHIELDS	107 *	
6441	ENCL	102	T TH	10:00-11:40AM	ENGLISH COMPOSITION	3.0	PETIN STUDB	SHIELDS	102 *	
6442	ENCL	102	M W F	11:00-11:50AM	ENGLISH COMPOSITION	3.0	BEARUP S	SHIELDS	101 *	
6443	ENCL	102	M W F	11:00-11:50AM	ENGLISH COMPOSITION	3.0	STUDEBAKER B	SHIELDS	107 *	
6444	ENCL	102	M W F	12:00-12:50PH	ENGLISH COMPOSITION	3.0	PETTINGER D	SHIELDS	101 *	
6445	ENCL	102	T TH	12:00- 1:30PH	ENGLISH COMPOSITION	3.0	RIEDEL K	SHIELDS	108 *	
6446	ENCL	102	M W F	1:00- 1:50PH	ENGLISH COMPOSITION	3.0	BEARUP S	SHIELDS	101 *	
6448	ENCL	102	T TH	1:30- 3:00PH	ENGLISH COMPOSITION	3.0	RIEDEL K	SHIELDS	108 *	





REGISTRATION DATES: WEDNESDAY, JANUARY 8 — THURSDAY, JANUARY 9 — FRIDAY, JANUARY 10, 1986 8:30 A.M. — 6:00 P.M.

SECT. NO.	COURSE TITLE AND NO.	DAYS	TIME	COURSE DESCRIPTIONS	CR.	INSTRUCTOR	LOC.	PRE REQ	FEE	FOOTNOTES
6630	MUSIC 131	TH	7:30-10:00PM	COLLEGE-HV CHORALE	1.0	WONG C	FINE ARTS 121			
6631	MUSIC 132	TH	5:00-6:30PM	JAZZ CLUB	1.0	WONG C	FINE ARTS 121			
6633	MUSIC 140A	Time to be arranged		APP MUSIC-VOICE	1.0	WONG C	TBA	*	40.00	
6632	MUSIC 140A	Time to be arranged		APP MUSIC-VOICE	2.0	WONG C	TBA		80.00	
6635	MUSIC 140B	Time to be arranged		APP MUSIC-KEYBOARD	1.0	STAFF	TBA		40.00	
6634	MUSIC 140B	Time to be arranged		APP MUSIC-KEYBOARD	2.0	STAFF	TBA		80.00	
6638	MUSIC-140C	Time to be arranged		APP MUSIC-STRINGS	1.0	STAFF	TBA		40.00	
6636	MUSIC 140C	Time to be arranged		APP MUSIC-STRINGS	2.0	STAFF	TBA		80.00	
6637	MUSIC 140C	Time to be arranged		APP MUSIC-STRINGS	2.0	STAFF	TBA		80.00	
6640	MUSIC 140D	Time to be arranged		APP MUSIC-WOODWINDS	1.0	CURTIS L	TBA		40.00	
6639	MUSIC 140D	Time to be arranged		APP MUSIC-WOODWINDS	2.0	CURTIS L	TBA		40.00	
6642	MUSIC 140E	Time to be arranged		APP MUSIC-BRASS	1.0	CURTIS L	TBA		40.00	
6643	MUSIC 140E	Time to be arranged		APP MUSIC-BRASS	1.0	CURTIS L	TBA		40.00	
6641	MUSIC 140E	Time to be arranged		APP MUSIC-BRASS	2.0	CURTIS L	TBA		80.00	
6645	MUSIC 140F	Time to be arranged		APP MUS-PERCUSSION	1.0	CURTIS L	TBA		40.00	
6644	MUSIC 140F	Time to be arranged		APP MUS-PERCUSSION	2.0	CURTIS L	TBA		80.00	
6646	MUSIC 145A	T TH	10:00-10:50AM	VOIS CLASS	2.0	WONG C	TBA			
6650	MUSIC 200	Time to be arranged		MUSIC	-1.0	STAFF	TBA	*		DA
6649	MUSIC 200	Time to be arranged		MUSIC	2.0	STAFF	TBA	*		DA
6647	MUSIC 200	Time to be arranged		MUSIC	3.0	STAFF	TBA	*		DA
6648	MUSIC 200	Time to be arranged		MUSIC	4.0	STAFF	TBA	*		DA
7225	MUSIC 202	MTWTF	2:00-3:50PM	THEORY OF MUS/SOPHO	4.0	BRESKE T	FINE ARTS 121	*		
		AND F	11:00-11:50AM				FINE ARTS 121	*		

LIBRARY SCIENCE DEPARTMENT

6591	LB 250	W	6:00-9:00PM	LIBRARY PUB SERVICE	3.0	BEALE W	TAYLOR BLDG	10*		DA
6592	LB 250	Time to be arranged		LIT SCI SPEC TOPICS	3.0	BEALE W	TAYLOR BLDG	107	*	DA

MATHEMATICS DEPARTMENT

(Computer Science \* Engineering \* Mathematics)

6323	CS 101	Time to be arranged		INTRO TO D P ASEP	2.0	STROPE H	VOTECH D	112		
6324	CS 101	T TH	8:00-8:50AM	INTRO TO DATA PROC	2.0	STROPE H	SHIELDS	116		
6325	CS 101	T TH	10:00-10:50AM	INTRO TO DATA PROC	2.0	PRATT STROPE	SHIELDS	116		HS
6326	CS 101	H	10:00-12:00PM	INTRO DATA PROC	2.0	HEINER D	BURLEY OFFICE			
6327	CS 101	T TH	6:00-8:00PM	INTR TO DATA PROC/B	2.0	HEINER D	BURLEY OFFICE			
6328	CS 101	T TH	8:00-10:00PM	INTR TO DATA PROC/B	2.0	HEINER D	BURLEY OFFICE			
6329	CS 224	H W F	11:00-11:50AM	INTRO PROC-PASCAL	3.0	BERRIOCHOA R	SHIELDS	109	*	
6330	CS 224	TH	7:00-8:00PM	INTRO PROC-PASCAL	3.0	HOOPS H	DECDL HIGH SCH			
6331	CS 225	H W F	10:00-10:50AM	INTRO PROC-FORTRAN	3.0	BERRIOCHOA R	VOTECH D			HS
6332	CS 227	H W F	12:00-12:50PM	INTRO PROC-COBOL	3.0	STROPE H	SHIELDS	209	*	
6333	CS 228	H W F	8:00-8:50AM	INTRO PROC-BASIC	3.0	BUTLER C	VOTECH D			HS
6334	CS 228	H W F	12:00-12:50PM	INTRO PROC-BASIC	3.0	LEWIN R	SHIELDS	110		HS
6335	CS 228	H	7:00-9:30PM	INTRO PROC-BASIC B	3.0	MILLER H	BURLEY OFFICE			HS
6336	CS 251	MTWTF	1:00-2:00PM	INTRO COMP SCI II	4.0	BERRIOCHOA R	VOTECH D	112	*	HS
6461	ENGR 101	H W	1:00-1:50PM	ENGINEERING GRAPHIC	2.0	MILLER H	SHIELDS	208		HS
6462	ENGR 120	MTW	12:00-1:00PM	INTRO ENGINEERING	3.0	MILLER H	SHIELDS	208	*	HS
6463	ENGR 200	MTWTF	9:00-9:50AM	ELEC SYSTEMS & CIRCUIT	4.0	MILLER H	SHIELDS	208		HS
6464	ENGR 212	T TH	1:00-2:00PM	INT TO MECHAN/DYNAM	2.0	MILLER H	SHIELDS	208		HS
6465	ENGR 241	F	1:00-3:00PM	ENGR MEASUREMENTS/B	4.0	MILLER H	BURLEY OFFICE			HS
6574	MATH 020	H W F	8:00-9:50AM	INTER ALGEBRA	3.0	BERRIOCHOA R	SHIELDS	209	*	HS
6575	MATH 020	H W F	9:00-9:50AM	INTER ALGEBRA	3.0	BERRIOCHOA R	SHIELDS	209	*	HS
6576	MATH 020	H W F	11:00-12:00PM	INTER ALGEBRA	3.0	IRONS S	SHIELDS	104	*	HS
6577	MATH 020	H W	7:00-10:00PM	INTER ALGEBRA	3.0	LEWIN R	BURLEY OFFICE			HS
6578	MATH 102	MTW F	10:00-10:50AM	CALCULUS TO MATH	4.0	LEWIN R	SHIELDS	210	*	HS
6579	MATH 103	T	7:00-10:00PM	MATH ELEM TEACHERS	3.0	SMITH L	BURLEY OFFICE			HS
6600	MATH 104	TH	6:00-8:30PM	HOD MATH/ELEM TEACH	3.0	SMITH L	SHIELDS	209	*	HS
6601	MATH 105	MTWTF	10:00-10:50AM	MATH FOR BUS DEC I	4.0	MILLER H	SHIELDS	208	*	HS
6603	MATH 106	H	6:00-10:00PM	MATH/BUS DEC I/II	4.0	LEWIN R	BURLEY OFFICE			HS
6602	MATH 106	MTW F	10:00-11:50AM	MATH/BUS DEC I/II	5.0	LEWIN R	SHIELDS	210	*	HS
6604	MATH 111	MTWTF	11:00-11:50AM	COLLEGE ALG & TRIG	5.0	MCCLFRESH B	SHIELDS	116	*	HS
6605	MATH 111	UTH	7:00-10:00PM	COLLEGE ALG & TRIG	5.0	LEWIN R	BURLEY OFFICE			HS
6606	MATH 112	MTWTF	0:00-9:00AM	ANA GEOM/CALCULUS I	5.0	MCCLFRESH B	SHIELDS	115	*	HS
6607	MATH 112	MTWTF	11:00-11:50AM	ANA GEOM/CALCULUS I	5.0	MCCLFRESH B	SHIELDS	116	*	HS
6608	MATH 211	MTW F	11:00-11:50AM	ANA GEOM/CALCUL II	4.0	BUTLER C	SHIELDS	210	*	HS
6609	MATH 212	MTWTF	12:00-12:50PM	ANA GEOM/CALCUL III	4.0	MCCLFRESH B	SHIELDS	210	*	HS
6610	MATH 230	Time to be arranged		INTRO LINEAR ALGEBRA	3.0	MCCLFRESH B	SHIELDS	TBA	*	HS
6611	MATH 310	H W F	1:00-1:50AM	ELEMENTARY STATISTICS	3.0	BUTLER C	SHIELDS	209	*	HS
6612	MATH 310	H W F	1:00-1:50PM	ORDIN DIFFERE EQUAT	3.0	BUTLER C	SHIELDS	209	*	HS

MILITARY SCIENCE

6615	HS 101	TH	10:00-10:50AM	INTRO/MILITARY SCI	1.0	SHULSEN	SHIELDS	103		
6616	HS 101	TH	1:00-1:50PM	INTRO/MILITARY SCI	1.0	SHULSEN	SHIELDS	109		
6617	HS 102	TH	11:00-11:50AM	INTRO/MILITARY SCI	1.0	SHULSEN	SHIELDS	208		
6618	HS 102	TH	2:00-2:50PM	INTRO/MILITARY SCI	1.0	SHULSEN	SHIELDS	109		

NURSING (REGISTERED) & ALLIED HEALTH DEPARTMENT

6173	AH 101	Time to be arranged		FUNDC TERMINOLOGY	2.0	STANFIELD P	TBA	TBA		DA
6174	AH 220	T TH	9:00-11:00AM	FUND OF NUTRITION	3.0	STANFIELD P	VOTECH CENTER	119		DA
6175	AH 225	TH	9:00-9:00PM	DIET THEORY	3.0	STANFIELD P	SHIELDS	205	*	15.50
6651	NRSC 103	H W	1:00-3:00PM	INTER NURS INTERVEN	7.0	BLACKBURN HLR	SHIELDS	205	*	DA
6652	NRSC 103A	H	0:00-10:00AM	INTE NURS INT LAB A	0.0	BLACKBURN HLR	SHIELDS	114	*	NC DA
6653	NRSC 103B	T	1:30-3:30PM	INTE NURS INT LAB B	0.0	BLACKBURN HLR	SHIELDS	114	*	NC DA
6654	NRSC 203	T TH	11:00-3:30PM	ADV NURS INTERVENT	11.0	BUETT SANDY	SHIELDS	102	*	DA
		AND H	7:00-3:00PM				CLINICAL			
		AND F	1:00-3:00PM				CLINICAL			
6655	NRSC 205	TH	9:00-11:00AM	NURSING SEMINAR	1.0	BLACKBURN-H	SHIELDS	210	*	DA

SECT. NO.	COURSE TITLE AND NO.	DAYS	TIME	COURSE DESCRIPTIONS	CR.	INSTRUCTOR	LOC.	PRE REQ	FEE	FOOTNOTES
<b>PHYSICAL EDUCATION DEPARTMENT</b>										
6657	IPE 100	MTWTF	6:00-8:00AM	ADULT RECREATION	0.0	NEILL R	CYM		25.00	NC
6658	PE 101		1:15-3:00PM	BOULINING	1.0	KLEINKOPF K	BOULARDROME		20.00	
6659	PE 104	NW	10:00-10:50AM	VOLLEYBALL	1.0	STROUD R	CYM			
6660	PE 107	MW	2:00-4:00PM	BEGINNING TENNIS	1.0	HITTLEIDER J	CYM			TBA
6661	PE 109	TH	10:00-10:50AM	JAZZ DANCE	1.0	HACKNEY R	CYM			TBA
6663	PE 111	TH	11:00-6:00PM	BEGINNING SKIING	1.0	KLNKDF STAFF	POERELLE SKI		72.00	
6662	PE 111	F	12:00-5:30PM	BEGINNING SKIING	1.0	KLINKOFF STF	HAGIC MOUNTAIN		72.00	
6665	PE 112	TH	11:00-6:00PM	INTERM & ADV SKIING	1.0	KLNKDF STAFF	HAGIC MOUNTAIN		72.00	
6664	PE 112	F	12:00-5:30PM	INTERM & ADV SKIING	1.0	KLNKDF STAFF	POERELLE SKI		72.00	
6666	PE 114	F	12:00-5:30PM	BEG CROSS CNTLY SKI	1.0	KLEINKOPF K	HAGIC MOUNTAIN		50.00	
6667	PE 115	TH	11:00-12:00AM	STRETCH & STRENGTH	1.0	HACKNEY R	CYM			
6668	PE 117	MW	9:00-6:00PM	BEGINNING-OLDF	1.0	STROUD R	CYM			
6669	PE 118	MWF	1:00-2:30PM	AEROBIC WT TRAINING	1.0	KLEINKOPF K	CYM			
6670	PE 119	MWF	11:00-11:50AM	WELLNESS/AEROBICS	1.0	HITTLEIDER J	CYM			
6671	PE 119	MWF	12:00-12:50PM	WELLNESS/AEROBICS	1.0	HITTLEIDER J	CYM			
6672	PE 119	MWF	5:00-6:00PM	WELLNESS/AEROBICS	1.0	MEINERT Y	BURLEY OFFICE			
6673	PE 121		Time to be arranged	CSI EMPLOYEE LAPSKM	0.0	HITTLEIDER J	RACQUETEL CLUB		40.00	CR
6674	PE 121	HT	4:30-5:30PM	CSI EMPLOYEE FITNESS	0.0	MITTY STAFF	CYM			CR
6675	PE 122	WTH	7:30-9:00PM	BEG & ADV JUDD	1.0	DOBBS W	CYM/EAST BALC			
6676	PE 122	WTH	7:30-9:00PM	BEG & ADV JUDD	1.0	DOBBS W	CYM/EAST BALC			
6677	PE 123	TH	7:00-9:00PM	BEGINNING KARATE/B	1.0	CARBERT T	BURLEY OFFICE			
6678	PE 123	T	7:00-10:00PM	BEGINNING KARATE	1.0	TIDD R	CYM/WEST BALC			
6679	PE 124	TH	7:00-10:00PM	ADVANCED KARATE	1.0	TIDD R	CYM/WEST BALC			
6680	PE 125	H	7:00-9:00PM	BEG SELF-DEFENSE	1.0	STARR C	CYM			
6681	PE 127	W	6:00-8:00PM	TRAPSHOOTING	1.0	KIRCHTZ VOYL	CUN CLUB		60.00	
6682	PE 128	H	7:00-9:00PM	ADV SELF-DEFENSE	1.0	STARR C	CYM/EAST BALC			
6683	PE 132	TH	8:00-9:00PM	THE KMNDY	1.0	KDCH B	CYM			
6684	PE 138	TH	9:00-10:00AM	BEG RACQUETBALL	1.0	WALKER J	RACQUETEL CLUB		35.00	
6685	PE 138	TH	10:00-11:00AM	BEG RACQUETBALL	1.0	WALKER J	RACQUETEL CLUB		35.00	
6686	PE 140	MW	8:00-8:50AM	INTERM RACQUETBALL	1.0	WALKER J	RACQUETEL CLUB		35.00	
6687	PE 144	MWF	10:00-11:00AM	OVER 60 CTTING FIT	1.0	HITTLEIDER J	CYM			
6688	PE 151	T	1:00-3:00PM	FIRST AID AND CPR	2.0	EDWARDS C	SHIELDS		104	
6689	PE 151	T	7:00-9:00PM	FIRST AID AND CPR	2.0	EDWARDS C	SHIELDS		107	
6692	PE 155	F	8:00-10:00AM	HLTH & WELLNESS	2.0	KLEINKOPF K	CYM		104	
6693	PE 155	TH	9:00-9:50AM	HLTH & WELLNESS	2.0	KLEINKOPF K	CYM		104	
6690	PE 155	T	9:00-9:50AM	HLTH & WELLNESS	2.0	HITTLEIDER J	CYM		104	
6693	PE 155	TH	1:00-2:00PM	HLTH & WELLNESS	2.0	HITTLEIDER J	CYM		104	
6694	PE 155	MW	7:00-10:00PM	HLTH & WELLNESS/B	2.0	THOMAS K	BURLEY OFFICE			
6695	PE 167	MWF	7:00-10:00PM	MEDICN EDUCATION	1.0	MATHWS C	BURLEY OFFICE			
6696	PE 169	TH	4:00-7:00PM	ADVANCED EQUITATION	1.0	MATHWS C	EXPOSITION		201	
6697	PE 170		Time to be arranged	ENGLISH EQUITATION	1.0	OLSON S	EXPOSITION		201	
6698	PE 180	MTWTF	3:00-6:00PM	VAR BASKETBALL-MEN	1.0	TRENKLE F	CYM		201	
6699	PE 181	MTWTF	2:00-3:00PM	WCHT TRAIN/BSKTL-M	1.0	TRENKLE F	CYM			
6700	PE 185	MTWTF	1:00-3:00PM	VAR BASKETBALL-WOMN	1.0	HARDESTY L	CYM			
6701	PE 186	MTWTF	3:00-6:00PM	WCT TRAIN/BSKTL-W	1.0	HARDESTY L	CYM			
6702	PE 190	MTWTF	3:00-6:00PM	VARSIY BASEBALL	1.0	WALKER J	TBA			
6703	PE 191	MWF	11:00-11:50PM	WCT TRAIN/BASEBALL	1.0	WALKER J	CYM			
6704	PE 192	MTWTF	6:30-8:30PM	VAR SFYS-WMEN VOLBY	1.0	STROUD R	CYM			
6705	PE 195	MTWTF	1:00-3:00PM	VAR MEN/WOMEN TRACK	1.0	NEILL R	CYM			
6706	PE 196	MTWTF	3:00-5:00PM	WCT TRAINING TRACK	1.0	NEILL R	CYM			
6707	PE 198	MTWTF	4:00-7:00PM	VARSIY RODEO	1.0	DAVIS S	EXPOSITION			
6708	PE 198	MW	4:00-7:00PM	VARSIY RODEO	1.0	DAVIS S	EXPOSITION			
6709	PE 200		Time to be arranged	APPL PHYSICAL EDUC	1.0	MITT KLEIN	CYM			
6710	PE 200	FS	9:00-5:00PM	RODD JUDGING SEM	1.0	DAVIS S	EXPOSITION			
6711	PE 220	TH	9:30-10:00AM	CONC OF BIO LAB A	0.0	KLEINKOPF K	CYM		135	
6712	PE 221	MW	10:00-11:00AM	CONC OF BIO LAB C	0.0	KLEINKOPF K	CYM		135	
6713	PE 222	MW	7:00-10:00AM	TAPING TECHNIQUES	2.0	KLEINKOPF K	CYM		20.00	
6714	PE 222	MW	10:00-11:00AM	WORKING ON WELLNESS	1.0	HITTLEIDER J	CYM		104	
6715	PE 222	MW	10:00-11:00AM	WORKING ON WELLNESS	1.0	HITTLEIDER J	CYM		104	

**SCIENCE DEPARTMENT**

(Biology \* Chemistry \* Earth Science \* Geology \* Physics \* Zoology)

6223	BID 100	MWF	10:00-10:50AM	CONCEPTS OF BIOLOGY	4.0	BECHINSKI J	SHIELDS		116	MS
6224	BID 100	MW	7:00-9:00PM	CONCEPTS OF BIOLOGY	4.0	BECHINSKI J	SHIELDS		223	MS
6225	BID 100	AND	7:00-8:00PM							
6225	BID 100B	T	9:00-10:50AM	CONC OF BIO LAB A	0.0	BECHINSKI J	SHIELDS		216	NC
6226	BID 100B	T	11:00-12:50PM	CONC OF BIO LAB B	0.0	BECHINSKI J	SHIELDS		216	NC
6227	BID 100C	T	9:00-10:00PM	CONC OF BIO LAB C	0.0	BECHINSKI J	SHIELDS		216	NC
6228	BID 120	MWF	11:00-11:50AM	MAN & ENVIRONMENT	4.0	SNIDER R	SHIELDS		190	MS
6229	BID 120B	TH	4:00-2:00PM	MAN & ENVIRON LAB A	0.0	SNIDER R	SHIELDS		216	NC
6230	BID 120B	TH	9:00-10:50AM	MAN & ENVIRON LAB B	0.0	SNIDER R	SHIELDS		216	NC
6231	BID 203	TWTH	12:00-12:50PM	PLANT BIOLOGY	4.0	SNIDER R	SHIELDS		223	NC
6232	BID 203A	TH	2:00-3:00PM	PLANT BIOLOGY LAB A	0.0	SNIDER R	SHIELDS		216	NC
6233	BID 204	MWF	9:00-9:50AM	BIOLOGY FOUNDATIONS	4.0	GOLDING F	SHIELDS		110	MS
6234	BID 204	TH	9:00-10:00AM	BIOCHEMISTRY LAB A	0.0	SNIDZ GOLDIN	SHIELDS		117	MS
6235	BID 250	MWF	11:00-11:50AM	MICROBIOLOGY	4.0	GOLDING F	SHIELDS		223	NC
6236	BID 250A	MW	3:00-6:00PM	MICROBIOLOGY LAB A	0.0	GOLDING F	SHIELDS		117	MS
6237	BID 250B	T	9:00-12:00PM	MICROBIOLOGY LAB B	0.0	GOLDING F	SHIELDS		223	NC

REGISTRATION DATES: WEDNESDAY, JANUARY 8 — THURSDAY, JANUARY 9 — FRIDAY, JANUARY 10, 1986 8:30 A.M. — 6:00 P.M.

SECT. NO.	COURSE TITLE AND NO.	DAYS	TIME	COURSE DESCRIPTIONS	CR.	INSTRUCTOR	LOC.	PRE REQ	FEE	FOOTNOTES
6305	CHEM 100A	M W F	9:00-9:50AM	CHEMICAL APPLICATIONS	1.0	STAFF	SHIELDS	T8A		MS
6306	CHEM 100B	M W F	11:00-11:50AM	CHEMICAL APPLICATIONS	1.0	STAFF	SHIELDS	215		MS
6307	CHEM 100C	TWTH	6:00-7:30PM	CHEM APPLICATIONS/B	1.0	COUPE T	BURLEY OFFICE			MS
6308	CHEM 103	MTWTF	1:00-1:50PM	INTRO TO CHEMISTRY	5.0	PETTYGROVE D	SHIELDS	116	*	MS
6309	CHEM 103	TW	7:00-9:00PM	INTRO TO CHEM/B	5.0	STAFF	BURLEY OFFICE		*	MS
6310	CHEM 103	TH	8:00-10:00AM	INTRO TO CHEM LAB A	0.0	STAFF	SHIELDS	224	*	NC NC
6311	CHEM 103B	TH	10:00-12:00PM	INTRO TO CHEM LAB B	0.0	STAFF	SHIELDS	224	*	NC NC
6312	CHEM 103C	TH	3:00-5:00PM	INTRO TO CHEM LAB C	0.0	STAFF	SHIELDS	224	*	NC NC
6313	CHEM 103D	TH	7:00-9:00PM	INTRO TO CHEM LAB D	0.0	COUPE T	SHIELDS	224	*	NC NC
6314	CHEM 104	M W F	11:00-11:50AM	INTRO TO ORGAN/BIOC	4.0	RENN R	SHIELDS	204	*	NC MS
6315	CHEM 104A	TH	12:00-3:00PM	INTRO TO ORGAN/BIOC	4.0	RENN R	SHIELDS	208	*	NC MS
6316	CHEM 111	MTW F	1:00-1:50PM	PRIN OF CHEMISTRY	5.0	FUUECEL J	SHIELDS	207	*	MS
6317	CHEM 111A	T	8:00-11:00AM	PRIN OF CHEM LAB A	0.0	STAFF	SHIELDS	224	*	NC NC
6318	CHEM 112	M W F	1:00-1:50PM	INORG CHEM/DUAL LAB	5.0	FUUECEL J	SHIELDS	119	*	MS
6319	CHEM 112A	M W F	2:00-5:00PM	INORG CHEM/DUAL LAB	5.0	FISHER HA	SHIELDS	224	*	NC 16
6320	CHEM 112B	T F	2:00-5:00PM	INORG CHEM/DUAL LAB	5.0	FUUECEL J	SHIELDS	224	*	NC NC
6321	CHEM 299	M W F	10:00-10:50AM	ORGANIC CHEMIST II	5.0	RENN R	SHIELDS	216	*	MS
6322	CHEM 299A	M W F	2:00-5:00PM	ORGANIC CHEM LAB A	0.0	RENN R	SHIELDS	213	*	NC NC
6466	ES 108	M W F	9:00-9:50AM	INTRO WEATHER/CLIMA	4.0	STROPE H	SHIELDS	105		
6489	GEOL 110	M W F	11:00-11:50AM	HISTORICAL GEOLOGY	4.0	STROPE H	SHIELDS	208		MS
6490	GEOL 110A	TH	11:00-12:50PM	HIST-GEOLOGY-LAB-A	0.0	STROPE H	SHIELDS	215	*	NC MS, NC
6717	PHY 214	M W F	1:00-1:50PM	GENERAL PHYSICS A	4.0	FISHER HA	SHIELDS	215	*	NC MS
6718	PHY 214	M W F	1:00-1:50PM	GENERAL PHYSICS A	4.0	FISHER HA	SHIELDS	215	*	NC MS
6719	PHY 223	M WTHF	9:00-9:50AM	PHYS/SCIENT/ENGINEER	5.0	FISHER HA	SHIELDS	209	*	MS
6720	PHY 223A	T	8:00-11:00AM	PHYS/SCIENT/ENGINEER LAB A	0.0	FISHER HA	SHIELDS	215	*	NC
6721	PHY 223A	T	2:00-5:00 PM	PHYS/SCIENT/ENGINEER LAB B	0.0	STAFF	SHIELDS	215	*	NC
6761	SCI 200	Time to be arranged		INDEPENDENT STUDY	2.0	STAFF	T8A	T8A	*	MS
6760	SCI 200	Time to be arranged		INDEPENDENT STUDY	2.0	STAFF	T8A	T8A	*	MS
6761	SCI 200	Time to be arranged		INDEPENDENT STUDY	3.0	STAFF	T8A	T8A	*	MS
6762	SCI 200	Time to be arranged		INDEPENDENT STUDY	3.0	STAFF	T8A	T8A	*	MS
7215	ZOOL 227	M W F	9:00-9:50AM	HUMAN ANAT & PHYSIO	4.0	PUDER D	SHIELDS	116	*	MS
7219	ZOOL 227A	M	3:00-5:00PM	HUMAN ANAT/PHY LAB A	0.0	PUDER D	SHIELDS	216	*	NC NC
7220	ZOOL 227B	M	7:00-10:00PM	HUMAN ANAT/PHY LAB B	0.0	PUDER D	SHIELDS	216	*	NC NC
7221	ZOOL 228	M W F	10:00-10:50AM	HUMAN ANAT & PHYSIO	4.0	PUDER D	SHIELDS	115	*	MS
7222	ZOOL 228A	TH	9:00-10:00PM	HUMAN ANAT/PHY LAB A	0.0	PUDER D	SHIELDS	216	*	NC MS
7223	ZOOL 228B	TH	2:00-5:00PM	HUMAN ANAT/PHY LAB B	0.0	PUDER D	SHIELDS	216	*	NC MS

## SIGN LANGUAGE/INTERPRETER TRAINING PROGRAM

6527	ITP 282	Time to be arranged		INTERP/TRANSLT II	4.0	STAFF	T8A	T8A	*	MS
6528	ITP 284	T TH	2:00-4:00PM	INTERP/TRANSLT IV	4.0	SHOPPELL J	SHIELDS	107	*	MS
6529	ITP 280	Time to be arranged		1/13/86 To 3/07/86	3.0	STAFF	T8A	T8A	*	MS
6530	ITP 215	M W F	4:00-4:50PM	ASER SIGN LANG VI	2.0	HARTWELL H	SHIELDS	106	*	MS
6532	ITP 222	Time to be arranged		INTRO NCE SYSTEMS	2.0	HARTWELL H	SHIELDS	T8A	*	MS
6533	ITP 229	Time to be arranged		SPECIAL SETTINGS	4.0	HARTWELL H	T8A	T8A	*	MS
6534	ITP 230	Time to be arranged		1/13/86 To 3/07/86	3.0	STAFF	T8A	T8A	*	MS
6531	ITP 221	Time to be arranged		SIGN VIS/BLIND ASSN	3.0	STAFF	T8A	T8A	*	MS
6764	SLs 103	MTWTH	7:00-7:50AM	1/13/86 To 3/07/86	6.0	SHOPPELL J	VOTECH BLDG	125	*	DA
6765	SLs 104	MTWTH	7:00-7:50AM	INTERNSHIP	3.0	STAFF	T8A	T8A	*	DA
6766	SLs 104	MTWTH	12:00-12:50PM	INTERPRETER	3.0	STAFF	T8A	T8A	*	DA
6767	SLs 112	T TH	10:00-11:50AM	ASER SIGN LANG I	4.0	HARTWELL H	SHIELDS	105	*	MS
6768	SLs 206	MTWTH	1:00-1:50PM	ASER SIGN LANG II	4.0	HARTWELL H	SHIELDS	107	*	MS
6769	SLs 210	T	2:00-4:30PM	ASER SIGN LANG II	4.0	HARTWELL H	SHIELDS	107	*	DA
6770	SLs 220	M	6:30-9:30PM	PSYC/SOC ASPPTS DEAF	4.0	SHOPPELL J	SHIELDS	106	*	MS
				ASER SIGN LANG IV	4.0	SHOPPELL J	SHIELDS	106	*	MS
				SUPPT SYSTEMS	3.0	HARTWELL H	VOTECH BLDG	115	*	MS
				SEMINAR DEAF CULTUR	3.0	SHOPPELL J	TAYLOR BLDG	047	*	DA

## SOCIAL AND BEHAVIORAL SCIENCE DEPARTMENT

(Anthropology \* Education \* Geography \* Gerontology \* History \* Political Science \* Psychology \* Sociology)

6177	ANTH 103	M W F	9:00-9:50AM	INTRO TO ARCHAEOLOG	3.0	SPEYER R	SHIELDS	108		
6178	ANTH 238	M W F	1:00-1:50PM	INDIANS OF NORTH AM	3.0	SPEYER R	SHIELDS	108	*	MS
6415	ED 200	Time to be arranged		APPLIED EDUCATION	1.0	KEITH D	SHIELDS	121	*	MS
6414	ED 200	Time to be arranged		APPLIED EDUCATION	2.0	KEITH D	SHIELDS	121	*	MS
6413	ED 200	Time to be arranged		APPLIED EDUCATION	3.0	KEITH D	SHIELDS	121	*	MS
6412	ED 200	Time to be arranged		APPLIED EDUCATION	4.0	KEITH D	SHIELDS	121	*	MS
6416	ED 200	M W	7:00-9:50PM	FOUNDATIONS OF EDUC	3.0	KEITH D	SHIELDS	109	*	MS
6417	ED 201	M W	7:00-10:00PM	CULTURE OF EDUC	3.0	LEE	BURLEY OFFICE			
6488	CEOG 102	M W F	10:00-10:50AM	CULTURAL GEOGRAPHY	3.0	ALLRED R	SHIELDS	106	*	MS
6492	CEOG 102	M W F	12:00-12:50PM	CER/SOC & CULT ASPE	3.0	SPEYER R	SHIELDS	108	*	MS
6504	HIST 101	M W F	10:00-10:50AM	APPLIED CER/INDIV	2.0	SPEYER R	VOTECH BLDG	123	*	MS
6505	HIST 102	Time to be arranged		WESTERN CIV PART I	3.0	GENTRY J	SHIELDS	110	*	MS
6506	HIST 102	Time to be arranged		WESTERN CIV PART II	3.0	GENTRY J	VOTECH BLDG	124	*	MS
6507	HIST 102	M W F	11:00-11:50AM	WESTERN CIV PART II	3.0	GENTRY J	SHIELDS	110	*	MS
6508	HIST 111	M W F	2:00-2:50PM	US HISTORY PART I	3.0	GENTRY J	BURLEY OFFICE			
6509	HIST 112	Time to be arranged		US HISTORY PART II	3.0	QUINN L	SHIELDS	121	*	MS
6510	HIST 112	M W F	8:00-8:50AM	US HISTORY PART II	3.0	GENTRY J	SHIELDS	110	*	MS
6511	HIST 112	M W F	9:00-9:50AM	US HISTORY PART II	3.0	ALLRED R	SHIELDS	106	*	MS
6513	HIST 112	M W F	12:00-12:50PM	US HISTORY PART II	3.0	ALLRED R	SHIELDS	106	*	MS
6512	HIST 112	M W F	12:00-12:50PM	US HISTORY PART II	3.0	QUINN L	SHIELDS	106	*	MS
6514	HIST 211	M W F	7:00-10:00PM	ENGLISH HISTORY	3.0	ALLRED R	SHIELDS	106	*	MS
6515	HIST 215	M W F	11:00-11:50AM	IDA/PAAC NW HISTORY	3.0	QUINN L	SHIELDS	106	*	MS
6516	HIST 215	TH	7:00-10:00PM	IDA/PAAC NW HIST /G	3.0	GENTRY J	BURLEY OFFICE			
6729	PSCI 100	Time to be arranged		REPRESENT GOVERNMENT	1.0	STAFF	TAYLOR BLDG	047	*	MS
6730	PSCI 101	M W F	8:00-9:50AM	AMER NATION GOVERN	3.0	HULL C	SHIELDS	102	*	MS
6731	PSCI 101	M W F	11:00-11:50AM	AMER NATION GOVERN	3.0	HULL C	SHIELDS	102	*	MS
6732	PSCI 101	M W F	7:00-10:00PM	AMER NATION GOVERN	3.0	HULL C	SHIELDS	102	*	MS
6733	PSCI 202	T TH	10:00-11:15AM	AMER STATE/LOC GOV	3.0	QUINN L	SHIELDS	108	*	MS
6734	PSCI 221	M W F	9:00-9:50AM	INTRO TO INTER RELA	3.0	HULL C	SHIELDS	102	*	MS
6735	PSCI 221	M W F	12:00-12:50PM	INTRO TO INTER RELA	3.0	HULL C	SHIELDS	102	*	MS
6736	PSYC 101	Time to be arranged		CEN PSYCHOLOGY	3.0	KEITH D	SHIELDS	108	*	MS
6737	PSYC 101	M W F	8:00-8:50AM	GENERAL PSYCHOLOGY	3.0	KEITH D	SHIELDS	108	*	MS
6738	PSYC 101	T TH	8:00-9:20AM	GENERAL PSYCHOLOGY	3.0	STEPHENSON D	SHIELDS	109	*	MS
6739	PSYC 101	M W F	9:00-9:50AM	GENERAL PSYCHOLOGY	3.0	KEITH D	SHIELDS	109	*	MS
6740	PSYC 101	M W F	10:00-10:50AM	GENERAL PSYCHOLOGY	3.0	STEPHENSON D	SHIELDS	109	*	MS
6741	PSYC 101	M W F	7:00-10:00PM	CEN PSYCHOLOGY/B	3.0	REYNOLDS D	BURLEY OFFICE			

SECT. NO.	COURSE TITLE AND NO.	DAYS	TIME	COURSE DESCRIPTIONS	CR.	INSTRUCTOR	LOC.	PRE REQ	FEE	FOOTNOTES
6742	PSYC 105	Time to be arranged	11:30-1:00PM	HUMN RELAT/SUPERVIS	3.0	STAFF	TBA			
6743	PSYC 199	Time to be arranged	11:30-1:00PM	PSYCH OF PARENTING	1.0	FERRELL A.	SHIELDS	107		
				1/29/86 To 4/09/86			-SHIELDS	107		
6746	PSYC 200	Time to be arranged		APPLIED PSYCH INDV	1.0	STEPHENSON D	VOTECH BLDG	121		DA
6745	PSYC 200	Time to be arranged		APPLIED PSYCH INDV	2.0	STEPHENSON D	VOTECH BLDG	121		DA
6747	PSYC 200	Time to be arranged		APPLIED PSYCH INDV	4.0	STEPHENSON D	VOTECH BLDG	121		DA
6748	PSYC 201	Time to be arranged		CHILD PSYCH INDV	3.0	STEPHENSON D	VOTECH BLDG	121		SS
6749	PSYC 201	M W F	12:00-12:50PM	CHILD PSYCHOLOGY	3.0	STEPHENSON D	SHIELDS	109		SS
6750	PSYC 202	T H	8:00-9:50AM	ADOLESCENT PSYCH	3.0	KEITH D	SHIELDS	110		SS
6751	PSYC 202	T H	7:00-10:00PM	ADOLESCENT PSYCH	3.0	RUNDY C	BURLEY OFFICE	108		
6752	PSYC 203	M W F	11:00-12:00AM	EDUCATIONAL PSYCH	4.0	KEITH D	SHIELDS	109		SS
6753	PSYC 205	M W F	9:00-9:50AM	PERSONAL/SOC ADJUST	3.0	STEPHENSON D	SHIELDS	109		
6754	SOC 101	Time to be arranged		INTRO TO SOCIOLOGY	3.0	HCKENNA H	VOTECH CENTER	124		
6753	SOC 101	M W F	10:00-10:50AM	INTRO TO SOCIOLOGY	3.0	HCKENNA H	SHIELDS	101		
6784	SOC 101	T H	10:00-11:30AM	INTRO TO SOCIOLOGY	3.0	HCKENNA H	SHIELDS	110		
6785	SOC 102	T H	9:30-10:00AM	SOCIAL PROBLEMS	3.0	SPYER R	SHIELDS	109		
6786	SOC 102	M W F	7:00-10:00PM	SOCIAL PROBLEMS	3.0	HCKENNA H	SHIELDS	109		
6787	SOC 102	M W F	7:00-10:00PM	SOCIAL PROBLEMS/R	3.0	SPYER R	BURLEY OFFICE	108		
6795	SOC 201	M W F	7:00-10:00PM	INTRO TO SOCIAL WRK	3.0	MC ALLISTER	SHIELDS	109		
6796	SOC 211	M W F	7:00-10:00PM	INTRO TO SOCIAL WRK	3.0	SPYER R	SHIELDS	108		
6797	SOC 240	M W F	9:00-9:50AM	MARRIA & FAMIL LVI	3.0	HCKENNA H	SHIELDS	101		
6792	SOC 200	Time to be arranged		APPLIED SOC SCIENCE	1.0	STEPHENSON D	TBA	TBA		CR
6791	SOC 200	Time to be arranged		APPLIED SOC SCIENCE	2.0	STEPHENSON D	TBA	TBA		CR
6790	SOC 200	Time to be arranged		APPLIED SOC SCIENCE	4.0	STEPHENSON D	TBA	TBA		CR
6789	SOC 200	Time to be arranged		APPLIED SOC SCIENCE	4.0	STEPHENSON D	TBA	TBA		CR
6788	SOC 200	Time to be arranged		APPLIED SOC SCIENCE	5.0	STEPHENSON D	TBA	TBA		CR
6794	SOC 200	Time to be arranged		APPLIED SOC SCIENCE	6.0	STEPHENSON D	TBA	TBA		CR
6801	SOCSCT 199	Time to be arranged		CRISIS CNTR DOM VILS	1.0	LARIN B	TBA	TBA		CR
6799	SOCSCT 199	Time to be arranged		D.E.A.	1.0	STEPHENSON D	TBA	TBA		CR
6800	SOCSCT 199	Time to be arranged		MNCMNT COMM SKILLS	1.0	STEPHENSON D	TBA	TBA		CR
6803	SOCSCT 200	Time to be arranged		APPLIED SOC SCIENCE	6.0	HULL C	SHIELDS	TBA		CR
6802	SOCSCT 200	Time to be arranged		APPLIED SOC SCIENCE	6.0	STEPHENSON D	SHIELDS	TBA		CR

## STUDENT PERSONNEL DEPARTMENT

6810	SP 080	T H	9:30-3:00PM	EMPLOY ED READINESS	0.0	STAFF	CENTER NEW DIR			
6809	SP 080	T H	9:30-3:00PM	EMPLOY ED READINESS	1.0	STAFF	CENTER NEW DIR			
6808	SP 080	T H	9:30-3:00PM	EMPLOY ED READINESS	2.0	STAFF	CENTER NEW DIR			
6807	SP 080	T H	9:30-3:00PM	EMPLOY ED READINESS	3.0	STAFF	CENTER NEW DIR			
6804	SP 080	T H	9:30-3:00PM	EMPLOY ED READINESS	4.0	STAFF	CENTER NEW DIR			
6806	SP 080	T H	9:30-3:00PM	EMPLOY ED READINESS	5.0	STAFF	CENTER NEW DIR			
6805	SP 080	T H	9:30-3:00PM	EMPLOY ED READINESS	6.0	STAFF	CENTER NEW DIR			
6811	SP 090	T H	9:00-10:00AM	THINK & PROBL SOLV	2.0	VAUGHN N	SHIELDS	106		

## STUDY SKILLS CENTER

6831	SS 009	T H	8:00-8:50AM	MATH CONCEPTS	2.0	DAWSON J	SHIELDS	208		
6832	SS 009	T H	11:00-12:00AM	MATH CONCEPTS	1.0	DAWSON J	VOTECH CENTER	201		
6833	SS 009	T H	11:00-12:00AM	MATH CONCEPTS	2.0	DAWSON J	VOTECH CENTER	201		
6834	SS 009	M W F	1:00-1:50PM	MATH CNCPTS ANXTY A	2.0	IRONS S	SHIELDS	210		
6835	SS 009	T H	6:30-9:30PM	MATH CONCEPTS	1.0	JENKINS R	VOTECH CENTER	125		
6836	SS 009	T H	6:30-9:30PM	MATH CONCEPTS	2.0	JENKINS R	VOTECH CENTER	125		
6837	SS 010	Time to be arranged		BEGINNING ALGEBRA	1.0	IRONS S	VOTECH CENTER	125		
6838	SS 010	Time to be arranged		BEGINNING ALGEBRA	2.0	IRONS S	VOTECH CENTER	125		
6839	SS 010	Time to be arranged		BEGINNING ALGEBRA	3.0	IRONS S	VOTECH CENTER	125		
6840	SS 010	M W F	8:00-8:50AM	ALGEBRA	2.0	IRONS S	SHIELDS	208		
6841	SS 010	T H	10:00-11:30AM	BEGINNING ALGEBRA	3.0	IRONS S	SHIELDS	110		
6842	SS 010	T H	6:30-9:00PM	BEGINNING ALGEBRA	1.0	JENKINS R	VOTECH CENTER	125		
6843	SS 010	T H	6:30-9:00PM	BEGINNING ALGEBRA	2.0	JENKINS R	VOTECH CENTER	125		
6844	SS 010	T H	6:30-9:00PM	BEGINNING ALGEBRA	3.0	JENKINS R	VOTECH CENTER	125		
6045	SS 011	Time to be arranged		BASIC ENGLISH	1.0	STAFF	VOTECH CENTER	125		
6846	SS 011	Time to be arranged		BASIC ENGLISH	2.0	STAFF	VOTECH CENTER	119		
6847	SS 011	M W F	8:00-8:50AM	BASIC ENGLISH	3.0	JOHNSON B	VOTECH CENTER	105		
6848	SS 011	T H	6:30-9:30PM	BASIC ENGLISH	1.0	BENNETT B	VOTECH CENTER	125		
6849	SS 011	T H	6:30-9:30PM	BASIC ENGLISH	2.0	BENNETT B	VOTECH CENTER	125		
6851	SS 012	Time to be arranged		GEOMETRY	1.0	IRONS S	VOTECH CENTER	125		
6850	SS 012	Time to be arranged		GEOMETRY	2.0	IRONS S	VOTECH CENTER	125		
6852	SS 012	Time to be arranged		GEOMETRY	1.0	JENKINS R	VOTECH-CENTER	125		
6853	SS 012	Time to be arranged		GEOMETRY	2.0	JENKINS R	VOTECH CENTER	125		
6855	SS 013	Time to be arranged		BASIC WRITING SKILL	1.0	STAFF	VOTECH CENTER	125		
6854	SS 013	Time to be arranged		BASIC WRITING SKILL	2.0	STAFF	VOTECH CENTER	125		
6856	SS 013	Time to be arranged		BASIC WRITING SKILL	1.0	BENNETT B	VOTECH CENTER	125		
6857	SS 013	Time to be arranged		BASIC WRITING SKILL	2.0	BENNETT B	VOTECH CENTER	125		
6858	SS 020	M W F	11:00-11:50AM	INTERMED ALGEBRA	3.0	IRONS S	SHIELDS	104		
6859	SS 023	Time to be arranged		INTERMED ALGEBRA	3.0	JENKINS R	VOTECH CENTER	125		
6860	SS 023	Time to be arranged		DEVELOP COMPOSITION	3.0	STAFF	VOTECH CENTER	125		
6861	SS 023	Time to be arranged		DEVELOP COMPOSITION	3.0	BENNETT B	VOTECH CENTER	125		
6864	SS 030	M W F	11:00-11:50AM	ENG AS A SEC LANG	1.0	CHUGG C	VOTECH CENTER	125		
6863	SS 030	M W F	11:00-11:50AM	ENG AS A SEC LANG	2.0	CHUGG C	VOTECH CENTER	125		
6862	SS 030	M W F	11:00-11:50AM	ENG AS A SEC LANG	3.0	CHUGG C	VOTECH CENTER	125		
6865	SS 030A	M W F	9:00-11:00AM	ENG SEC LANG LAB A	1.0	CHUGG C	VOTECH CENTER	105		
6866	SS 031	M W F	8:00-8:50AM	READING FUND ESL	1.0	JOHNSON W	VOTECH CENTER	125		
6867	SS 031	M W F	8:00-8:50AM	READING FUND ESL	2.0	JOHNSON W	VOTECH CENTER	125		
6869	SS 031	M W F	10:00-10:50AM	READING FUNDAMENTAL	1.0	JOHNSON W	VOTECH CENTER	105		
6869	SS 031	M W F	10:00-10:50AM	READING FUNDAMENTAL	2.0	JOHNSON W	VOTECH CENTER	105		
6870	SS 031	T H	6:30-9:30PM	READING FUNDAMENTAL	1.0	BENNETT B	VOTECH CENTER	125		
6871	SS 031	T H	6:30-9:30PM	READING FUNDAMENTAL	2.0	BENNETT B	VOTECH CENTER	125		

REGISTRATION DATES: WEDNESDAY, JANUARY 8 — THURSDAY, JANUARY 9 — FRIDAY, JANUARY 10, 1968

8:30 A.M. — 6:00 P.M.

SECT. NO.	COURSE TITLE AND NO.	DAYS	TIME	COURSE DESCRIPTIONS	CR.	INSTRUCTOR	LOC.	PRE REQ	FEE	FOOTNOTES
6872	SS 050	Time to be arranged		EFFEC STUDY SKILLS	1.0	STAFF	VO TECH CENTER	125		
6873	SS 050	T TH	6:30- 9:30PM	EFFEC STUDY SKILLS	1.0	STAFF	VO TECH CENTER	125		
6876	SS 070	Time to be arranged		SPELL DEVELOPMENT	1.0	STAFF	VO TECH CENTER	125		
6876	SS 070	T TH	6:30- 9:30PM	SPELL DEVELOPMENT	3.0	STAFF	VO TECH CENTER	125		
6874	SS 070	Time to be arranged		SPELL DEVELOPMENT	3.0	STAFF	VO TECH CENTER	125		
6877	SS 070	T TH	6:30- 9:30PM	SPELL DEVELOPMENT	1.0	STAFF	VO TECH CENTER	125		
6878	SS 070	T TH	6:30- 9:30PM	SPELL DEVELOPMENT	2.0	STAFF	VO TECH CENTER	125		
6879	SS 070	T TH	6:30- 9:30PM	SPELL DEVELOPMENT	2.0	STAFF	VO TECH CENTER	125		
6882	SS 000	MTWTF	8:00- 01:30PM	DEVELOP READ ESL	1.0	JOHNSON W	VO TECH CENTER	125		
6881	SS 080	MTWTF	8:00- 01:50AM	DEVELOP READ ESL	2.0	JOHNSON W	VO TECH CENTER	125		
6880	SS 080	MTWTF	8:00- 01:50AM	DEVELOP READ ESL	3.0	JOHNSON W	VO TECH CENTER	125		
6885	SS 080	MTWTF	11:00-11:50AM	DEVELOP READING	1.0	JOHNSON W	VO TECH CENTER	105		
6884	SS 080	MTWTF	11:00-11:50AM	DEVELOP READING	2.0	JOHNSON W	VO TECH CENTER	105		
6883	SS 080	MTWTF	11:00-11:50AM	DEVELOP READING	3.0	JOHNSON W	VO TECH CENTER	105		
6888	SS 080	H W F	2:00- 2:50PM	DEVELOP READING	1.0	JOHNSON W	VO TECH CENTER	125		
6887	SS 080	H W F	2:00- 2:50PM	DEVELOP READING	2.0	JOHNSON W	VO TECH CENTER	125		
6886	SS 080	H W F	2:00- 2:50PM	DEVELOP READING	3.0	JOHNSON W	VO TECH CENTER	125		
6890	SS 088	Time to be arranged		BASIC VOCABULARY	1.0	STAFF	VO TECH CENTER	125		
6889	SS 088	Time to be arranged		BASIC VOCABULARY	2.0	STAFF	VO TECH CENTER	125		
6891	SS 088	Time to be arranged		BASIC VOCABULARY	3.0	STAFF	VO TECH CENTER	125		
6892	SS 100	Time to be arranged		INDEPEN-STUDY/MATH	1.0	BOHS S	VO TECH CENTER	125		
6893	SS 100	T TH	6:30- 9:30PM	INDEPEN STUDY/MATH	1.0	JENNINS R	VO TECH CENTER	125		
6894	SS 102	T TH	9:00- 9:50AM	COLLEGE READING	2.0	JOHNSON W	VO TECH CENTER	105		
6895	SS 102	T TH	9:00- 9:50AM	COLLEGE READING	3.0	JOHNSON W	VO TECH CENTER	105		
6896	SS 102	H W	1:00- 1:50PM	COLLEGE READING	2.0	JOHNSON W	VO TECH CENTER	205		
6897	SS 102	H W	1:00- 1:50PM	COLLEGE READING	3.0	JOHNSON W	VO TECH CENTER	205		
6898	SS 102	T TH	6:30- 9:30PM	COLLEGE READING	2.0	BENNETT B	VO TECH CENTER	125		
6899	SS 102	T TH	6:30- 9:30PM	COLLEGE READING	3.0	BENNETT B	VO TECH CENTER	125		
6900	SS 103	MTWTF	2:00- 2:50PM	INTER ENG SEC LANG	1.0	CHUCC G	VO TECH CENTER	125		
6901	SS 103	MTWTF	2:00- 2:50PM	INTER ENG SEC LANG	2.0	CHUCC G	VO TECH CENTER	125		
6902	SS 103	MTWTF	2:00- 2:50PM	INTER ENG SEC LANG	3.0	CHUCC G	VO TECH CENTER	125		
6903	SS 103A	T TH	9:00-10:00AM	ENG SECON LANG LABA	1.0	CHUCC C	SHIELDS	105		
6904	SS 104	MTWTF	1:00- 1:50PM	ESL/COLLEGE PURPOSE	3.0	CHUCC G	VO TECH CENTER	125		
6905	SS 106	Time to be arranged		COLL READ/STUDY SKS	2.0	JOHNSON W	VO TECH CENTER	125		
6906	SS 106	H W F	9:00- 9:50AM	COLL READ/STUDY SKS	2.0	JOHNSON W	VO TECH CENTER	105		
6907	SS 106	T TH	2:00- 2:50PM	COLL READ/STUDY SKS	2.0	JOHNSON W	VO TECH CENTER	105		
6910	SS 108	Time to be arranged		VOCAB DEVELOPMENT	1.0	STAFF	VO TECH CENTER	125		
6909	SS 108	Time to be arranged		VOCAB DEVELOPMENT	2.0	STAFF	VO TECH CENTER	125		
6908	SS 108	Time to be arranged		VOCAB DEVELOPMENT	3.0	STAFF	VO TECH CENTER	125		
6913	SS 100	T TH	6:30- 9:30PM	VOCAB DEVELOPMENT	1.0	STAFF	VO TECH CENTER	125		
6912	SS 100	T TH	6:30- 9:30PM	VOCAB DEVELOPMENT	2.0	STAFF	VO TECH CENTER	125		
6911	SS 100	T TH	6:30- 9:30PM	VOCAB DEVELOPMENT	3.0	STAFF	VO TECH CENTER	125		
6914	SS 111	Time to be arranged		ENGLISH GRAMMAR	1.0	STAFF	VO TECH CENTER	125		
6915	SS 111	Time to be arranged		ENGLISH GRAMMAR	2.0	STAFF	VO TECH CENTER	125		
6916	SS 111	Time to be arranged		ENGLISH GRAMMAR	3.0	STAFF	VO TECH CENTER	125		
6917	SS 111	T TH	6:30- 9:30PM	ENGLISH GRAMMAR	1.0	STAFF	VO TECH CENTER	125		
6918	SS 111	T TH	6:30- 9:30PM	ENGLISH GRAMMAR	2.0	STAFF	VO TECH CENTER	125		
6919	SS 111	T TH	6:30- 9:30PM	ENGLISH GRAMMAR	3.0	STAFF	VO TECH CENTER	125		
6921	SS 114	Time to be arranged		CRITICAL READING	2.0	STAFF	VO TECH CENTER	125		
6920	SS 114	Time to be arranged		CRITICAL READING	3.0	STAFF	VO TECH CENTER	125		
6923	SS 114	T TH	6:30- 9:30PM	CRITICAL READING	2.0	STAFF	VO TECH CENTER	125		
6922	SS 114	T TH	6:30- 9:30PM	CRITICAL READING	3.0	STAFF	VO TECH CENTER	125		
6924	SS 115	Time to be arranged		EFFECTIVE LISTENING	1.0	BENNETT B	VO TECH CENTER	125		
6925	SS 115	T TH	6:30- 9:30PM	EFFECTIVE LISTENING	1.0	BENNETT B	VO TECH CENTER	125		
6927	SS 117	Time to be arranged		CONTENT SPELLING	1.0	STAFF	VO TECH CENTER	125		
6926	SS 117	Time to be arranged		CONTENT SPELLING	2.0	STAFF	VO TECH CENTER	125		
6929	SS 117	T TH	6:30- 9:30PM	CONTENT SPELLING	1.0	STAFF	VO TECH CENTER	125		
6930	SS 117	T TH	6:30- 9:30PM	CONTENT SPELLING	2.0	STAFF	VO TECH CENTER	125		
6930	SS 119	T TH	8:00-10:00AM	METRICS	1.0	STAFF	SHIELDS	105		
6931	SS 119	T TH	6:30- 9:30PM	METRICS	1.0	STAFF	VO TECH CENTER	125		
6934	SS 141	Time to be arranged		ACCELERATED READING	1.0	MECHAN H	VO TECH CENTER	125		
6933	SS 141	Time to be arranged		ACCELERATED READING	2.0	MECHAN H	VO TECH CENTER	125		
6932	SS 141	Time to be arranged		ACCELERATED READING	3.0	MECHAN H	VO TECH CENTER	125		

## NURSING PROGRAM RANKS HIGH

The CSI nursing programs are the tops in the state and the nation.

For the past seven years, 100 per cent of the graduates of the practical nursing classes have passed their state board examinations. This is the school's oldest nursing program and 20 students are taken each year.

All students in the CSI registered nursing program have passed their state board examinations during the first testing for the last three years. Karine Siplon, department chairperson, says CSI and all other Idaho schools have bettered the national average for students passing these tests.

Since the registered nursing program began in 1971, there have been 335 graduates and some 263 of these people were from Magic-Valley. Of the remainder—58—were from other areas of the state and 14 from out-of-state. Siplon said the majority of the nursing graduates are involved in health fields in this part of the state.

Siplon is also serving on the State Board of Nursing. She is one of seven appointed by the governor and is in the third year of her first term.

The CSI Nursing Department was evaluated last year and reaccredited by the National League for Nursing.



SECT. NO.	COURSE TITLE AND NO.	DAYS	TIME	COURSE DESCRIPTIONS	CR.	INSTRUCTOR	LOC.	PRE REQ	FEE	FOOTNOTES
<b>VOCATIONAL SPRING 1986</b>										
<b>AGRICULTURE DEPARTMENT</b>										
(Agronomist * Agri-Business * Fisheries Technology)										
(Livestock Production * General Agriculture * Agriculture Mechanics)										
6138	AC 106	HT TH	11:00-12:00AM	CHEMISTRY FOR AGRIC	4.0	PETTYGROVE	VOTECH BLDG	143		
6139	AC 106A		10:00-12:00AM	AGRI CHEM LAB A	0.0	PETTYGROVE	SHIELDS	224	*	NC
6140	AC 107	T	8:00-10:00AM	BEGINNING SOILS	4.0	STANERSEN L	VOTECH BLDG	143		
6141	AC 108	H W F	9:00-10:00AM	COOP PRODUCTION	4.0	WETTER P	VOTECH BLDG	140	*	NC
6142	AC 108A	TH	1:00-4:00PM	COOP PRODUC LAB A	0.0	WETTER P	VOTECH BLDG	140	*	NC
6143	AC 110	H W F	8:00-9:00AM	SEED SCIENCE	4.0	WETTER P	VOTECH BLDG	140	*	NC
6144	AC 110A	W	1:00-4:00PM	SEED SCIENCE LAB A	0.0	WETTER P	VOTECH BLDG	140	*	NC
6145	AC 111	HTWTH	9:00-9:00PM	AGRI INSERTION	1.0	PARKER R	TBA			
2/03/86 To 2/06/86										
6146	AC 114	F	11:00-12:00AM	AG ACTIVITIES	1.0	PARKER R	VOTECH BLDG	143	*	
6147	AC 152	H	1:00-2:00PM	AGRI COMPUTER LAB	2.0	STAFF	VOTECH BLDG	149		
6148	AC 152	TH	1:00-2:00PM	AGRI COMPUTER LAB	2.0	STAFF	VOTECH BLDG	149		
6149	AC 152	TH	1:00-2:00PM	AGRI-COMPUTER-LAB	2.0	STAFF	VOTECH BLDG	149		
6150	AC 154	T TH	9:00-10:00AM	AGRI WRITING	3.0	WETTER P	VOTECH BLDG	140		
AND										
6151	AC 158	HT F	10:00-11:00AM	APPL ANIMAL NUTRITI	4.0	PARKER R	VOTECH BLDG	140		
6152	AC 158A	T F	1:00-4:00PM	APP ANIM NUTR LAB A	0.0	PARKER R	VOTECH BLDG	140		NC
6153	AC 170	T TH	8:00-10:00AM	AGRI MECHANICS	3.0	HINE W	VOTECH CENTER	111		
6154	AC 171	H F	9:00-11:00AM	AGRI MECH/MAJORS	4.0	HINE W	VOTECH CENTER	111		
AND										
6155	AC 171A	HTWTH	1:00-4:00PM	AGRI APPLIC/MAJORS	6.0	HINE W	VOTECH D	101		
6156	AC 175	MT	9:00-4:00PM	FARM BUS REG/MCCT	6.0	LEWIS T	VOTECH CENTER	201		CR
6157	AC 178	WTH	9:00-4:00PM	FERT FUS ANNUAL	6.0	LEWIS T	VOTECH CENTER	201		
6158	AC 207	H W F	8:00-9:00AM	SOIL & WATER MANAGE	4.0	STANERSEN L	VOTECH BLDG	143	*	NC
6159	AC 207A	H	2:00-4:00PM	SOIL/WTR MGMT LAB A	0.0	STANERSEN L	VOTECH BLDG	143	*	NC
6160	AC 209	H W	1:00-2:00PM	LIVESTOCK MANAGEMEN	3.0	PARKER R	VOTECH BLDG	143	*	NC
6161	AC 218	T	3:00-5:00PM	PASTIC MET WELDING	2.0	HINE W	VOTECH CENTER	132L		
6162	AC 212	MT F	10:00-11:00AM	SOIL FERTILITY	4.0	STANERSEN L	VOTECH BLDG	143	*	NC
6163	AC 212A	T	1:00-4:00PM	SOIL FERTIL LAB A	0.0	STANERSEN L	VOTECH BLDG	143	*	NC
6167	AC 241	T TH	8:00-9:00AM	MEET & POTATO PROD	2.0	WETTER P	VOTECH BLDG	140		
6169	AC 250	HT TH	11:00-12:00AM	AGRI MARKETING	3.0	STANERSEN L	VOTECH BLDG	143	*	NC
6170	AC 252	H W F	9:00-10:00AM	ANIMAL HUSBANDRY	4.0	PARKER R	VOTECH BLDG	143	*	NC
6171	AC 252A	TH	1:00-4:00PM	ANIMAL HUSB LAB A	0.0	PARKER R	VOTECH BLDG	143	*	NC
6172	AC 285	Time to be arranged		COOP EDUCATION	3.0	STAFF	TBA			

**HOME ECONOMICS DEPARTMENT**

4580	HE 122	F	10:00-12:00AM	CLOTHING ANALYSIS	2.0	ANDERSON A	VOTECH CENTER	121		
4581	HE 124	H W	9:00-12:00AM	CLOTHING CONSTRUCT	3.0	ANDERSON A	VOTECH CENTER	121		
4582	HE 240	T	1:00-2:00PM	FAMILY HEAL MGMT	3.0	ANDERSON A	VOTECH BLDG	139	*	NC
4583	HE 240A	TH	12:00-3:00PM	FAM HEAL MGMT LAB A	0.0	ANDERSON A	VOTECH BLDG	139	*	NC

**MARKETING & MANAGEMENT DEPARTMENT**

(Mid-Management \* Retail Merchandising \* Clothing &amp; Fashion \* Industrial Management)

4255	BUS 153	T TH	8:00-9:30AM	MANAGEMENT CURRES	3.0	ANDERSON A	VOTECH CENTER	201		
4256	BUS 155	T TH	8:00-9:30AM	MANAGEMENT MATH	3.0	WILLIS J	VOTECH CENTER	202		
4257	BUS 164	Time to be arranged		SELF-MANAGEMENT	1.0	ANDERSON A	TBA			
4258	BUS 165	Time to be arranged		SUCC/MOTIVE DEVELOP	1.0	ANDERSON A	TBA			
4259	BUS 168	T	11:00-12:00AM	PROF DEVELOP	1.0	ANDERSON A	VOTECH CENTER	205		
4260	BUS 170	F	1:00-2:00PM	MARKET EDUCAT ASSOC	1.0	STAFF	VOTECH CENTER	202		
4261	BUS 172	H W F	9:00-10:00AM	ADVERTISING	3.0	RANDOLPH C	VOTECH CENTER	202		
4262	BUS 174	T TH	11:00-1:00PM	INTRO TO COMP (MH)	2.0	HAKINGS D	VOTECH BLDG	149		
1/13/86 To 5/09/86										
4263	BUS 174A	TH	1:00-4:00PM	COMPUTER LAB A	0.0	STAFF	VOTECH BLDG	149		NC
1/13/86 To 5/09/86										
4264	BUS 176	T TH	10:00-11:00AM	VTUAL MERCH/PROMOT	2.0	ANDERSON A	VOTECH CENTER	121		
4266	BUS 253	H W F	8:00-9:00AM	RETAIL MERCHANDISIN	3.0	WILLIS J	VOTECH CENTER	202		
4287	BUS 253	T	7:00-10:00PM	RETAIL MERCHANDISIN	3.0	HARPOH	BURLEY OFFICE	201	*	
4288	BUS 257	H W F	11:00-12:00AM	CREDIT/COLLECTIONS	3.0	HCCLYMONDS H	VOTECH CENTER	202	*	
4289	BUS 262	H W F	10:00-11:00AM	SMI BUSINESS MGT 11	3.0	HCCLYMONDS H	VOTECH CENTER	201	*	
4290	BUS 265	H W F	9:00-10:00AM	-BUSINESS LAW J	3.0	HCCLYMONDS H	VOTECH CENTER	201	*	
4291	BUS 285	Time to be arranged		COOP EDUCATION	3.0	RANDOLPH C	TBA			

**CSI AMBASSADORS WELCOME CAMPUS VISITORS**

The recently formed CSI Ambassador Club invites individual students or student groups to tour the College of Southern Idaho campus.

High school students may want to visit with a counselor or faculty advisor, sit in on a favorite class, find out about financial aid or scholarship, or just tour the academic and vocational facilities.

Anyone interested in a tour, please contact Graydon Stanley or Jeff Duggan at the High School/Community Relations Office at 733-9554, ext. 231. Please allow at least a week's prior notice.

REGISTRATION DATES: WEDNESDAY, JANUARY 8 — THURSDAY, JANUARY 9 — FRIDAY, JANUARY 10, 1986

8:30 A.M. — 6:00 P.M.

SECT. NO.	COURSE TITLE AND NO.	DAYS	TIME	COURSE DESCRIPTIONS	CR.	INSTRUCTOR	LOC.	PRE REQ	FEE	FOOTNOTES
<b>OFFICE OCCUPATIONS DEPARTMENT</b>										
(Bookkeeping * Business English * Business Math * Office Administration * Medical Secretary * Word Processing)										
6250	BUS 123	MTWTH	11:00-12:30PM	INTRD BOOKKEEPING	5.0	DEWITT L	SHIELDS			207
6251	BUS 123	MTWTH	2:30-4:00PM	INTRD BOOKKEEPING	5.0	JOHN B	SHIELDS			207
6252	BUS 125	H W	7:00-10:00PM	INTRD BOOKKEEPING	5.0	JOHN B	SHIELDS			207
6253	BUS 125	T TH	7:00-10:00PM	INTRD BOOKKEEPING	5.0	JOHN B	BURLEY OFFICE			
6272	BUS 225	MTWTH	9:00-9:30AM	PRIN OF BOOKKEEPING	5.0	DEWITT L	SHIELDS			207 *
6273	BUS 226	S	9:00-12:00PM	INTEG ACCT ON MICRO	2.0	JOHN B	TBA			
6274	BUS 226	T TH	9:30-11:00PM	INTEG ACCT ON MICRO	2.0	DEWITT L	VOTECH BLDG			144 *
6275	BUS 230	MTWTH	2:30-3:30PM	INCOME TAX PROCEDUR	5.0	DEWITT L	SHIELDS			207 *
6244	BUS 102	MTWTH	9:30-11:00AM	BUSINESS ENGLISH	5.0	THOMPSON A	SHIELDS			207 *
6245	BUS 102	MTWTH	11:00-12:30PM	BUSINESS ENGLISH	5.0	THOMPSON A	SHIELDS			214 *
6246	BUS 102	MTWTH	2:30-4:00PM	BUSINESS ENGLISH	5.0	WISWALL H	SHIELDS			214 *
6267	BUS 202	MTWTH	9:30-11:00AM	BUS ENGLISH APPL	5.0	SMITH D	SHIELDS			
6268	BUS 202	MTWTH	11:00-12:30PM	BUS ENGLISH APPL	5.0	SMITH D	SHIELDS			
6242	BUS 009	Time to be announced		BUSINESS LAB	0.0	STAFF	TBA			NG
6243	BUS 101	MTWTH	1:00-2:30PM	PERFORMING TYPING	5.0	HARTHAN D	SHIELDS			211 *
6247	BUS 105	MTWTH	9:00-9:30AM	BUS COMPUTER APPL	3.0	IRONS L	VOTECH BLDG			144 *
6248	BUS 105	MTWTH	2:30-3:30PM	BUS COMPUTER APPL	3.0	IRONS L	VOTECH BLDG			144 *
6249	BUS 105	MTWTH	2:30-3:30PM	BUS COMPUTER APPL	3.0	IRONS L	VOTECH BLDG			144 *
6254	BUS 141	MTWTH	11:00-12:00PM	MP COMPTS REPAIRING	4.0	HARTHAN D	VOTECH BLDG			144 *
6265	BUS 201	MTWTH	9:00-9:30AM	INTERPRETATE TYPING	5.0	WISWALL H	SHIELDS			214 *
6266	BUS 201	MTWTH	9:30-11:00AM	INTERPRETATE TYPING	5.0	WISWALL H	SHIELDS			214 *
6269	BUS 203	MTWTH	9:00-9:30AM	SHAKETHRU/2HT/TRANS	5.0	SMITH D	SHIELDS			211 *
6270	BUS 204	H W	1:00-2:00PM	OFFICE MCA/MSOC	2.0	HARTHAN D	SHIELDS			115 *
6271	BUS 205	T TH	1:00-2:00PM	OFFICE PRACTICES	2.0	HARTHAN D	SHIELDS			214 *
6276	BUS 231	MTWTH	11:00-12:30PM	ADV MED OFFICE PROC	3.0	GLENK P	VOTECH BLDG			131 *
6277	BUS 232	H W	1:00-2:30PM	ADV MED TERMINOLOGY	3.0	GLENK P	VOTECH BLDG			131 *
6278	BUS 232	T TH	7:00-10:00PM	ADV MED TERMINOLOGY	3.0	CRISTOFAL D	BURLEY H.S.			
6279	BUS 232	H	7:00-10:00PM	ADV MED TERMINOLOGY	3.0	STAFF	VOTECH BLDG			131 *
6280	BUS 233	T TH	1:00-2:30PM	MED TRANSCRIPTION	3.0	GLENK P	VOTECH BLDG			131 *
6283	BUS 234	Time to be announced		MED OFFICE PRACT	1.0	GLENK P	TBA			
6282	BUS 234	Time to be announced		MED OFFICE PRACT	2.0	GLENK P	TBA			
6281	BUS 234	Time to be announced		MED OFFICE PRACT	3.0	GLENK P	TBA			
6284	BUS 241	H W	9:00-11:00AM	WORD PROC ADV APPL	4.0	IRONS L	VOTECH BLDG			144 *
6285	BUS 242	T TH	10:00-11:00AM	RECORDS MANAGEMENT	2.0	HARTHAN D	SHIELDS			201 *
6302	BUS 285	MTWTH	1:00-2:30PM	COOP EDUCATION	1.0	IRONS L	TBA			
6300	BUS 285	MTWTH	1:00-2:30PM	COOP EDUCATION	2.0	IRONS L	TBA			
6298	BUS 285	MTWTH	1:00-2:30PM	COOP EDUCATION	3.0	IRONS L	TBA			
6296	BUS 285	MTWTH	1:00-2:30PM	COOP EDUCATION	4.0	IRONS L	TBA			
6294	BUS 285	MTWTH	1:00-2:30PM	COOP EDUCATION	5.0	IRONS L	TBA			
6292	BUS 285	MTW	1:00-2:30PM	COOP EDUCATION	6.0	IRONS L	TBA			
6303	BUS 285	MTWTH	2:30-4:00PM	COOP EDUCATION	1.0	HARTHAN D	TBA			
6301	BUS 285	MTWTH	2:30-4:00PM	COOP EDUCATION	2.0	HARTHAN D	TBA			
6299	BUS 285	MTWTH	2:30-4:00PM	COOP EDUCATION	3.0	HARTHAN D	TBA			
6297	BUS 285	MTWTH	2:30-4:00PM	COOP EDUCATION	4.0	HARTHAN D	TBA			
6295	BUS 285	MTWTH	2:30-4:00PM	COOP EDUCATION	5.0	HARTHAN D	TBA			
6293	BUS 285	MTW	2:30-4:00PM	COOP EDUCATION	6.0	HARTHAN D	TBA			

**NURSING & ALLIED HEALTH DEPARTMENT**

(Practical)

6723	PN 102	W	4:00-5:00PM	NORMAL NUTRITION	1.0	STANFIELD P	SHIELDS			102
6724	PN 104	H W	5:00-7:00PM	ANATOMY/PHYSIOLOGY	4.0	PINKSTON J	SHIELDS			101 *
6725	PN 109	H	9:00-10:00AM	PHARMACOLOGY FOR PN	2.0	HANNOHD H	SHIELDS			117 *
6727	PN 110	H	10:00-11:00AM	MED SURG NUTRITION	0.0	HANNOHD H	SHIELDS			117 * DA
6727	PN 110A	T TH	9:00-12:00AM	CLINICAL LAB	0.0	STAFF	SHIELDS			NG DA
7226	PN 110L	AND W F	1:30-4:00PM	CLINICAL EXPERIENCE	0.0	HANNOHD H	SHIELDS			NG DA
6726	PN 111	H	11:00-12:00AM	MATERNAL CHILD NURS	2.0	HANNOHD H	SHIELDS			117 * DA



The CSI Expo Center provides a huge indoor laboratory for agriculture students. Numerous livestock shows and sales are held at the Expo each year, giving the students opportunity to evaluate some of the top cattle, sheep and swine in the Northwest. The annual Future Farmers of America judging contest will be held April 11. This event draws several hundred high school students from throughout southern Idaho and northern Nevada.

## STUDY SKILLS



The Study Skills Center gives students individualized alternatives to develop and improve in reading, math, vocabulary, spelling and English as a second language.

Any fulltime CSI student can enroll in a study skills course free of charge. All others can take these courses for normal academic credit fees. Individualized and group instruction is offered to all students at the center. Students can pursue the G.E.D. program to receive their high school diploma.

The Study Skills Center is open from 8 a.m. to 4 p.m. Monday through Friday and from 6:30 to 9:30 p.m. Tuesday and Thursday.

## IDAHO STATE UNIVERSITY

COURSE NO.	DAY(S)	TIME	DESCRIPTION	CREDIT(S)	INSTRUCTOR	BLDG. RM.
<b>COLLEGE OF ARTS AND SCIENCES</b>						
HIST 491/591	M	7-9:30 p.m.	Sem/Am West	3	Quinn	T.F. Res. Cen.
SPCH 301	T	6:30-9:30 p.m.	Bus/Pro Spk	3	Nicholson	Res. Cen.
PSYCH 332	TBA	TBA	Psych/Adol. (prereq Psych 111-112)	3	Honsinger	Res. Cen.
PSYCH 499/599	TBA	TBA	Stress	1	Urfer/Joe	Buhl
ENG 307	Th	7-10 p.m.	Pro/Writing	3	Swetnam	Res. Cen.
GEOL 442/542	TBA	Last week in Feb.	Econ Minerals Lab	2	Link	Res. Cen.
<b>COLLEGE OF EDUCATION</b>						
ED 417/517	F S	4:30-7:30 p.m. 8 a.m. - 5 p.m. Feb. 21-22 Mar. 7-8 Mar. 21-22 April 4-5 April 18-19	Content Rding	3	Benintendi	Res. Cen.
ED 470/570	F S	5-9 p.m. 9-5 p.m. Mar. 7-8 Mar. 14-15 Mar. 29-30	Manip. Math	3	Piel	Res. Cen.
ED 601	T	6-9 p.m.	Resrch/Writing	3	Jones	Res. Cen.
HE 401/501	T	6:30-9:30 p.m.	Issues/Health-Ele.	3	Morris	Kimberly Ele.
HE 340/540	W	6:30-9:30 p.m.	Fitness/Wellness	3	Kearns	Res. Cen.
Registration for ISU Spring Classes will be held on Tuesday, January 7, 1986 at the ISU Resident Center, 140 2nd St. E., Twin Falls 734-4478						
<b>COLLEGE OF HEALTH</b>						
NRSR 320	T	4-8 p.m.	Pathophysiology	4	Spall/Teske	Res. Cen.



COURSE NO.	DAY(S)	TIME	DESCRIPTION	CREDIT(S)	INSTRUCTOR	BLDG.	RM.
<b>MAGIC VALLEY WINTER SESSION — January 7 - February 14, 1986</b>							
ED 543	T	6-10 p.m.	Career Counseling	2	Lanzet	SHLDS	108
Registration Tuesday, January 7, 1986 4:00 - 6:00 p.m. Shields 108							
<b>MAGIC VALLEY SPRING SESSION — February 24 - May 30, 1986</b>							
ED 531	W	7-10 p.m.	Supervision of Instruction	3	Bauscher	SHLDS	105
ED 533	M	7-9 p.m.	School Law	2	Kovarsky	SHLDS	204
ED 545	TBA	7-10 p.m.	Theories of Counseling	3	Staff	SHLDS	TBA
ED 502	TBA	7-9 p.m.	Statistical Methods	2	Staff	SHLDS	TBA
ED 592	M	7-9 p.m.	Special Topics Science of Teaching	2	Teater	SHLDS	205
Registration Monday, February 24, 1986 4:00 - 7:00 p.m. Shields 204							

For more information call The College of Idaho 1-459-5211

**SCIENCE OFFERINGS**



Our science department offers programs in chemistry, physics, biology, and pre-professional areas, parallel to the first and second year courses at Idaho's universities and colleges. These courses will all transfer to any of the state's universities. The department's pre-professional curriculum includes pre-med, veterinary, dentistry, pharmacy, chiropractic, and optometry. Foundation courses are also offered in allied health fields, earth, sciences, and forestry.

Dennis Peitgrove, department chairman, says the strength of the science department is due to the fact the faculty operates as a team and works closely with students, providing individualized attention, career planning, and program development.

**LEWIS-CLARK STATE COLLEGE  
IN COOPERATION WITH  
COLLEGE OF SOUTHERN IDAHO  
OFFERING 4-YEAR DEGREE  
PROGRAMS**

COURSE NO.	DAY(S)	TIME	DESCRIPTION	CREDIT(S)	INSTRUCTOR	BLDG.	RM.
MT 442	M	7-10 p.m.	Organizational Relations	3	McBride	Shlds	108
MK-301	T	7-10 p.m.	Principles of Marketing	3	TBA	Shlds	109
GB-301	W	8-11 a.m.	Financial Management	3	Hurley	Shlds	118
GB 301	Th	7-10 p.m.	Financial Management	3	Hurley	Shlds	118
GB 386	MTWTh May 19-23	TBA	Business Communications	3	Staff	Lewiston	



Counselor Karyl Myers discussed career opportunities with a student in the CSI Career Planning and Placement Center.

### JOB PLACEMENT CENTER ASSISTS STUDENTS AND EMPLOYERS

A Career Planning and Placement Center at the College of Southern Idaho has been organized to assist students, faculty and employers.

The center is being funded under a Title III grant from the U.S. Department of Education. Colin Randolph is the director and Karyl Myers, the counselor.

One of the purposes of the center is to help students in the choice phase of career development. The State Career Information System and the ACT Discover Career Information system will be available to provide information. Students can receive career planning and information counseling. Assistance in locating cooperative education job sites will also be available. Printed resource materials have also been gathered to the area to help students in planning their future.

The center also provides information on fulltime and parttime job placement. It aids the CSI faculty and staff so they can better advise students in making career choices. It also provides a referral system for jobs and careers and assists employers by screening applicants.

The center is now located in Room 103 of the Vo-Tech Center, which is Myers' office. However, it will be moved to the Student Services Center in the Taylor Administration Building this spring when construction is completed on the new wing.

**College of Southern Idaho**

P.O. Box 1238

Twin Falls, ID 83303 - 1238

Non-Profit Org.  
U.S. Postage  
**P A I D**  
Permit No. 134  
Twin Falls, Idaho  
83303 - 1238