

Inside today

Advertisement for a business or service, partially obscured.

Advertisement for a business or service, partially obscured.

Advertisement for Minico Meridion, Salt Lake City.

Advertisement for a business or service, partially obscured.

# The Times-News

62nd year, No. 94

Twin Falls, Idaho

Saturday, April 4, 1987

25¢

## State seeks delay in prisoner cutback order

By MARK WARRIS  
The Associated Press

BOISE — The Idaho Board of Corrections asked U.S. District Judge Harold Ryan on Friday to set back his June 30 deadline on an order to reduce the population at the Idaho State Penitentiary by 100 inmates.

...the prison south of Boise in a March 26 ruling on a lawsuit filed by inmates alleging that conditions at the facility, including overcrowding, constituted cruel and unusual punishment.

...postponement for meeting population requirements in the penitentiary's close-custody Unit Nine, which Ryan said must be able to meet Ryan's deadline for population reductions in four other units at the prison.

...completion by the time of the anticipated completion day," she said.

...In turn, 80 low-risk inmates would be moved out of the farm dorm to the Nampa and Boise work centers, the minimum-security facility at Cottonwood and to a new house arrest or "community control" program being developed by the Department of Corrections has neither lions.



Looking for the best Scott Hamilton of Nampa picks his favorite stock judging contest. Some 25 future stars of America chapters from Southern Idaho took part in the annual contest Friday.

where the students compared their picks to the choices of college coaches and competed for top teams and individual awards.

## Security gap at embassy grows wider

The Associated Press

WASHINGTON — The investigation into spying at the U.S. Embassy in Moscow has widened to include two other Marine guards suspected of having sex with Soviet women, and officials are looking into whether the problems could extend to other American embassies. It was disclosed Friday.

Foreign Affairs International operations subcommittee involved is widening... It's going to increase rather substantially.

## Jones, Swisher want closer scrutiny for utility consultants

By MARK PRATTER  
Times-News writer

TWIN FALLS — Idaho Attorney General Jim Jones and Perry Swisher, president of the state Public Utilities Commission, think public servants who consult for utilities should be subject to closer public scrutiny.

Current reporting requirements would not have disclosed the fee which was revealed in an article last month in THE IDAHO Statesman.

The consultant-reporting requirements for Mountain Bell and IPC are different. Mountain Bell must report consultant's fees of \$25,000 or more to the Federal Communications Commission, while IPC has a lower reporting threshold.

Commission reports, David Leroy was on the payroll of the GTE Sprint long-distance company when he was lieutenant governor, he said.

the telephone industry and it says IPC and Mountain Bell are subject to the same requirements, according to spokesman Rich Hays.

## Nation's March jobless rate dips; analysts unimpressed

The Associated Press

WASHINGTON — The nation's unemployment rate dipped to 6.5 percent in March, the government said Friday in a report that White House economists said new job losses in manufacturing and construction foreshadowed a slowing economy.

Area jobs open — B1 to 7,854,000 — the first time it has been below 7.9 million since April 1986.

agricultural payrolls showed 155,000 new jobs in March, 62,000 of them in government. And 116,000 of the 337,000 payroll jobs that had disappeared in February disappeared in revised numbers for that month, also released Friday.

Set clocks ahead hour tonight

WASHINGTON (AP) — The shortest weekend of the year has been stepped off this weekend to switch to standard time.

## Batt asked to study welfare computer woe

By QUANE KENYON  
The Associated Press

BOISE — Gov. Cecil Andrus has called upon a leader of the Idaho Legislature to look into problems with a new state welfare computer and to come up with recommendations.

computer system, called EPICS, designed to handle the hundreds of thousands of welfare claims and payments per year quickly.



# INEL manager Wade in line for Energy Department post

IDAHO FALLS (AP) — Troy Wade, manager of the sprawling Idaho National Engineering Laboratory, will return to Washington to become deputy assistant Energy secretary for defense programs.

Wade will return in late June to the position he left to take the INEL post in 1983. He will be replaced by Donald Ofte, the current deputy assistant secretary.

Meanwhile, INEL deputy manager Nick Aquilino has been named manager of the Department of Energy's Nevada Operations Office, which oversees the Nevada Test Site. All of the changes take effect in late July.

Wade said Friday that he agreed to the transfer with the understanding that there might be a promotion in the near future.

"I was asked by Undersecretary Joseph L. Saigado, if I would entertain the idea that might be in my interest," Wade said.

Several congressional sources said Friday that Adm. Sylvester Foley, DOE assistant secretary for defense programs, may be retiring in the summer. Wade will be Foley's first assistant when he takes the post at the end of the year.

Sen. Steve Symms, R-Idaho, said it was bad news that Wade is leaving the INEL. But the good news, he said, is the replacing an admiral who has been jerking us around.

Ofte has been principal deputy assistant secretary since 1984. The position has the responsibility of directing research, development, testing and production programs for DOE's \$7 billion nuclear weapons program.

Wade held the post from 1981 until 1983. He previously had been deputy manager of the DOE Nevada Operations Office.

Ofte, a native of Brooklyn, N.Y., previously served as deputy



TROY WADE Returning to Washington

DONALD OFTE New head man for INEL

manager of the Albuquerque Operations Office, where he oversaw nuclear weapons programs, the Waste Isolation Pilot Plant Programs and other DOE activities.

He was director of Albuquerque's Space and Special Programs, materials and technology branch from 1969 to 1972. He also was a senior research chemist with Monsanto Research Corp. Ofte has contributed to four books on liquid metals and ceramics.

Wade said Ofte's experience in Washington would help the INEL keep a high profile when new programs are discussed. His own position will ensure that the INEL's activities are known.

"Don is very current on what's going on in Washington," said Wade. "That will continue to raise the visibility of the lab nationwide."

Wade said the "fat" DOE would transfer both of its top men at the INEL at the same time displayed its confidence in the current staff. "It's a great tribute to the people of this federal office and the entire opera-

tion that the department feels so comfortable to move Nick and myself out at about the same time."

Word of Wade's departure was received with mixed feelings around the state and in eastern Idaho. Symms described Wade as "one of the finest public servants I've ever met... that's a well-run DOE operation."

Rep. Richard Stallings, D-Idaho, and Sen. James McClure, R-Idaho, said they also are sorry to see Wade leave, but feel they have gained a friend in Washington.

"Troy Wade is a great friend of Idaho and has made an important contribution to our state's economic and social well-being," Stallings said.

He commended Wade for his strong commitment and outstanding work in developing INEL into an international center for nuclear safety and breeder-reactor research, nuclear waste technology and other energy programs.

"Troy has been a leading spokesman for INEL and has worked hard to bring new projects to the site," Stallings said. "His national leadership has helped ensure a bright and healthy future for INEL."

## GOP leaders say 1988 won't be easy session

BOISE (AP) — Two Republican leaders of the Idaho Legislature, while basking in the praise for a highly successful session this year, warn that things won't be so easy next year.

In fact, House Speaker Tom Boyd said if he were a state agency chief, he'd start planning a light budget next year. "I think there will be little money for increases unless the Idaho economy makes a sharp rebound."

All agencies, including education, should realize that the state can sustain 10 percent spending increases at a time when economic growth is only a fraction of that, said Sen. James Risch, R-Boise, Senate president pro tem.

The Republicans were interviewed Friday for KTVB's "Viewpoint" program to be telecast this weekend.

In terms of important issues considered, and acted upon, "This probably was the most successful session that ever has been held," said Risch. He said many issues had built up through inaction in recent years, which accounted in part for this year's accomplishments.

Boyd, in his 11th year, but his first as a leader of the Legislature, said, "None of the other sessions matched it for accomplishments."

Risch and Boyd said part of the change in this year's session was because voters sent a "message," approving higher spending. And Risch said the election of a new governor, Democrat Cecil Andrus, added to the change.

That got the GOP-dominated Legislature and Democratic error away from the "confrontations which were the hallmark of the last executive administration," said Risch. In favor of negotiations and discussions between the executive and legislative branches.

"I believe that will be the way you see problems approached in the future," Risch said.

"The governor didn't lay down the gambit and say or else — although this year, we don't wound up doing the governor's bidding anyway," said Boyd.

The only major defeat handed Andrus during the legislative session was over repeal of the investment tax credit. Risch made a public statement early in the session that the Senate never would allow it, and he was right.

But Risch indicated next session

might be different. Because the federal investment credit was eliminated, fewer and fewer corporations will be making investment decisions based on tax gains, he said.

"My strong feelings (against repeal) was based on this year. I won't feel nearly as strongly next year as I did this year," he said.

Boyd said he felt the attempt at abrupt elimination of the credit was wrong. "If we see a repealer next year, it will be a phase-out type of repealer," he said.

The Republicans split on when results can be expected from a huge investment in the Department of Commerce.

Boyd said that will pay off, but "we will have to be patient."

Risch indicated less patience. When Commerce Director Jim Hawkins comes before the Legislature next year and asked for funding, Risch said he wants to see results, not platitudes.

### Religion leaves you flat?

Religion leaves a lot of people flat. It sounds fine on Sunday morning, but has little relation to Monday morning's flat tire. Christianity doesn't have to be that way, nor when your church is made up of people who care about each other.

Change your opinion about faith! Join us in our search to make a "Christianity practical."

**"Gethsemane"**  
10:00 a.m. Sunday School  
11:00 a.m. Worship Service  
Filer Mennonite Church  
109 Fifth St., Filer



## Legislative log

By The Associated Press  
Special to Governor — Reauthorizes SB1025 (State Affairs) — Reauthorizes interim legislative committee on personal matters.

SB1041 (State Affairs) — Makes administrators of the Department of Employment exempt from classification service requirements of the Personnel Code.

SB1075 (State Affairs) — Provides that a candidate's name may be on a ballot in more than one office, except for presidential electors.

SB1184 (Judiciary and Rules) — Alters Division of Public Works to enter into lease-purchase agreements for correctional facilities, with specified conditions.

**LEVI 501's 701's 302's**

**MEN'S - STUDENTS BOYS - GIRLS CHILDREN**

**SPECIAL AT 14.97**

**SAT. & SUN. APRIL 4th & 5th**

Extra Sizes **2.00** More

**INVEST IN AN ORIGINAL - LEVI'S BLUE JEANS**  
They won the West, and they're still the best. On the job, on the trail or on the town, Levi's® blue jeans are still the high quality jeans you've come to rely on. Get into Levi's® blue jeans — the American classic!

### State police warn that 55 still the limit

BOISE (AP) — Idaho motorists, the State Police wants you to know that the speed limit has not been increased yet — and traveling faster than 55 mph still will get you into trouble.

The new limit will be in effect on about 500 of the 630 miles of interstate in Idaho, which was posted for a 70 mph limit until an oil crisis in 1974.

The exceptions are 20 miles around the city of Boise, stretches at Idaho Falls and Pocatello, and Fourth of July Canyons on Interstate 84.

Department of Transportation officials started working on new signs, which go up as soon as the new limit goes into effect.

But an Idaho State Police spokesman warned Friday that until the limit changes, motorists face speeding citations if they violate the present limit.

"The fine is only \$5 up to 70 mph, but increases sharply after that."

"The increase in the speed limit has received a great deal of publicity," said Maj. Joe Flisk, ISP operations officer, "and already we are seeing many motorists increasing their speed."

He also stressed that the higher limit applies only to rural interstate areas.

## JCPENNEY IS PUTTING ON THE RITZ

### DAZZLING MILLION DOLLAR JEWELRY SALE

**ONE DAY ONLY SAT. APRIL 4TH**

<p><b>50% OFF Select stone jewelry</b> Save \$138 to \$278. Orig. \$290 to \$560. Choose from semi-precious stone earrings, rings, and pendants. Dramatically set in 14K gold. Some with diamonds.</p>	<p><b>75% OFF Select 14K gold chains</b> Save on a fine collection of 14K gold chains. Find herringbones and ropes in the lengths you love.</p>
<p><b>50% OFF All cultured pearls</b> Save \$100 Reg. \$200. 7" necklace. Save \$12.50 Reg. \$25. 18" necklace. Save \$12.50 Reg. \$25. 23" necklace. Save \$8.75 Reg. \$17.50. Knot earrings.</p>	<p><b>50% OFF Pulsar® watches</b> Save \$60 Orig. \$120. Ladies' baguette case. Save \$2.50 Orig. \$165. Ladies' diamond dial. Save \$60 Orig. \$120. Men's black bracelet. Save \$4.75 Orig. \$9.50 Men's gilt dial.</p>
<p><b>50% OFF Select sterling silver</b> Save on a special dramatic collection. For example: Save \$3 to \$27 Orig. \$6 to \$54. Sassy chains. Save \$18 to \$18 Orig. \$20 to \$36 Earrings.</p>	<p><b>40% OFF Select diamond rings</b> Save on selected diamond cocktail rings. Each is a classic, set in 14K gold. Choose 1/4, 1/2, 1, 1 1/2, or 2 ct. TW diamonds.</p>

**25% OFF** — All better watches in our Fine Jewelry Department

**30% OFF** — All wedding bands

**50% OFF** — All 10K and 14K gold stone-set rings

**75% OFF** — All men's jewelry accessories

**75% OFF** — All 14K gold chains, charms and earrings

**75% OFF** — All 14K gold stone-set earrings, bangle bracelets and pendants

**75% OFF** — All pearl strands, pendants and earrings

Special sale items. Jewelry sale includes only that jewelry which is available in the store. Some items may have been previously sold. Some items may have been previously sold. Some items may have been previously sold. Some items may have been previously sold.

**HOURS:**  
Mon.-Fri. 10 a.m. to 9 p.m.  
Saturday 10 a.m. to 6 p.m.  
Sunday 11 a.m. to 5 p.m.

**JCPenney** 734-0804  
Magic Valley Mall

© 1987 JCPenney Company, Inc.

**Nation**  
**Briefly**

**Webster hearing Wednesday**

WASHINGTON (AP) — The Senate Intelligence Committee said Friday that hearings on FBI Director William Webster's nomination to head the CIA will begin next Wednesday, opening the way for public questioning on what role the FBI might have played in the Iran-Contra affair.

One source, commenting on condition of anonymity, said preliminary work by the committee has turned up an evidence that could place Webster's nomination in jeopardy.

However, Webster is expected to face close questioning about what the FBI did — or didn't do — in connection with the secret sale of arms to Iran and possible diversion of some profits to Nicaraguan rebels.

Webster, 63, has won wide respect during his nine-year tenure as director of the FBI, and was praised by congressional Democrats and Republicans alike when President Reagan announced his nomination last month to replace ailing CIA Director William Casey.

**Iran still getting equipment**

NEW YORK (AP) — The United States was still sending weapons-related equipment to Iran as recently as last month, according to a network report Friday that administration officials dismissed as "without foundation."

"NBC Nightly News" quoting unidentified U.S. and foreign intelligence sources, reported that command and control electronics used to direct the fire of anti-aircraft and other weapons systems were sent to Iran in the early part of March.

Robert Sims, a Pentagon spokesman, denied the report, saying "I would distance that completely."

The reason the material was sent was to keep up contacts with elements of the Iranian regime, to acquire intelligence on Soviet operations, and to coordinate U.S. and Iranian support for the Afghan resistance, NBC said.

**Training blast kills soldiers**

FORT CARSON, Colo. (AP) — An explosive charge used to clear minefields blew up prematurely during a training exercise Friday, killing three soldiers, a spokeswoman at Fort Carson Army Post said.

No one else was injured in the accident. The victims' names were being withheld until their families could be notified, said Spec 4 Kim Hoppens of the Fort Carson public affairs office.

The victims were participating in an exercise in which an explosive charge is detonated to clear a four-foot path through an imaginary minefield when the explosive went off prematurely, said Hoppens.

**Lightning evidence discovered**

CAPE CANAVERAL, Fla. (AP) — A pinpoint hole in a charred chunk of a failed satellite rocket is strong evidence the vehicle was hit by lightning before it broke apart last week, the head of an investigation team said Friday.

Jon H. Busse said at a news conference that no conclusion had been reached on the cause of the accident, but he said electromagnetic interference remained the leading candidate.

Busse displayed the yard-square piece of rocket, describing the suspect area as a "pinhole in the fiberglass and cork section of the conical part of the nose fairing."

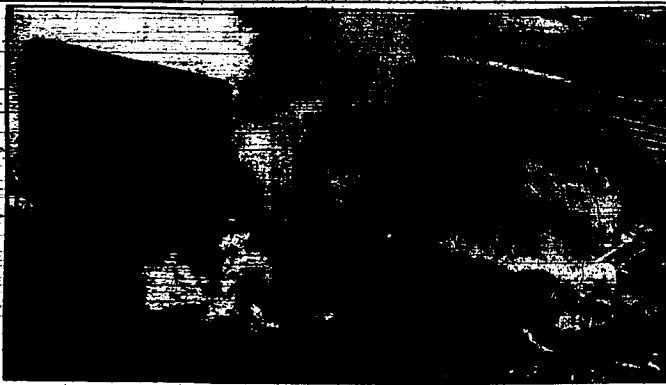
The fairing, or nose cone, protected the military communications satellite that rode atop the doomed Atlas-Centaur rocket, which broke apart 52 seconds after it was launched in a rainstorm on March 26.

**Reagan ready to fight again**

WASHINGTON (AP) — President Reagan, despite losing a legislative fight the previous day over the \$38 billion highway bill, said Friday he was ready to tangle again with Congress on spending.

"It was a battle well worth waging, and there will be more," Reagan said at a photo session. "Our pledge to the American people to reverse the trend toward more federal spending remains strong."

The president offered his comments after Transportation Secretary Elizabeth Dole gave him a \$1.6 billion check from the sale of Conrail, the government-owned freight railroad.



Smoke, flames rise from rubble left by grain elevator explosion in Burlington, Iowa

**Big Iowa elevator explodes, burns; dust believed cause**

BURLINGTON, Iowa (AP) — A large grain elevator caught fire and exploded Friday, blowing the tops off storage bins, shattering windows in 75 blocks and forcing evacuation of downtown buildings when flames threatened an underground fuel tank.

Five people were injured, one seriously. Twelve people worked at the elevator, officials said, but most were evacuated when the fire broke out.

"As I was looking up, there was a great big fireball, and the whole thing just kind of exploded," said Tony Miller, chief photographer at the town's daily newspaper, The Hawk Eye. The newspaper's offices are 300 yards from the elevator.

"We believe it was caused by grain dust, although we don't have any confirmation," said Jerry Ostendorf, operations manager for the state Office of Disaster Services. He called it a major explosion.

The company was cited in 1985 for safety violations involving grain dust and post a fine, said Mary Bryant, state Occupational Safety and Health Administration administrator.

"It blew the lid right off," said Charles Gates, The-Hawk Eye's managing editor. "It was like a 2,000-pound bomb going off."

At mid-afternoon, more than four hours after the blast, Police Chief Ted Behne said there was no more danger of explosions and people were being allowed back in a 10-block area that had been cleared.

Officials had feared railroad tank cars containing anhydrous ammonia, a hazardous compound used in making farm fertilizers, might explode or that the flames might reach an underground diesel fuel tank.

Miller said he and fellow photographer Mark Fageol heard the fire call and were walking toward the elevator when the blast hit.

"I had to take a step back to catch myself. As I looked up there was all kinds of sheet metal and burning wood and hot embers and a lot of smoke, and all of that stuff was starting to rain down," Miller said.

Miller said he took cover under a railroad car overhanging the street.

The thick cloud of smoke was detected on National Weather Service radar 75 miles northeast in Moline, Ill.

**Thiokol is target of probe**

WASHINGTON (AP) — The FBI is conducting a criminal investigation of Morton Thiokol Inc., the company that made faulty rocket seals blamed for the 1986 space shuttle Challenger disaster, according to a document on file in U.S. District Court.

The FBI has developed informants among the employees of the aerospace contractor as part of its criminal investigation, said the document, a private communication to a federal judge by the Justice Department.

Details of the criminal allegations under investigation could not be obtained.

It is not known whether the FBI's investigation concerns the company's conduct before the ill-fated Jan. 28, 1986 launch that killed seven shuttle crew members or during subsequent investigations into the disaster by Congress and a presidential commission.

Philip Weyna, the company's director of corporate development, declined to comment when asked about the FBI investigation.

The Chicago-based company makes rocket-booster components at a plant in Wasatch, Utah.

Susan Schuttler, an FBI spokeswoman, refused to confirm or deny the investigation, saying only that the court document that revealed the probe had been inadvertently released and resealed.

The FBI investigation was revealed in court papers on file in connection with a lawsuit against Thiokol by Roger Boisjoly, a former engineer for the company who worked on the space shuttle project.

**Engberg's**  
CLOSE OUT On All CRIBS SAVE 45% Good thru April 10th

**GRAND OPENING**  
**MAGIC VALLEY NURSERY**  
SATURDAY and SUNDAY  
APRIL 4th & 5th  
SOUTH LINCOLN & H

- sprinkler systems
- landscaping & new lawns
- decks & fences
- lawn maintenance
- bulk & bag bark
- all kinds of plants, shrubs, trees for home gardening & landscaping

**SPRING IS HERE**  
NOW IS THE TIME:  
Power Rake  
Fertilize  
General Spring Clean-up  
324-4441

124 MAIN AVENUE N., TWIN FALLS 733-1506. OPEN 10-6 DAILY (SAT. TIL 5:30. VALIDATED PARKING FOR PARIS CUSTOMERS. REAR OF STORE ON 2ND AVE. N.

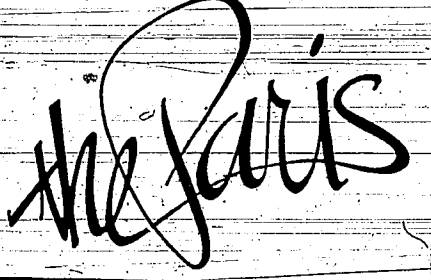
**Discount" time!**

**Savings for Paris charge card holders.**

Form for opening a Paris charge account, including fields for name, address, employment, and signature.

It's so easy to open a Paris charge account: Just fill in the application and bring or mail it to the Paris. You'll instantly receive your own sealed-in-an-envelope Mystery Discount and enjoy savings on the spot: 10% to 30% and you can use that discount every day through April 11th.

A special desk for issuing new credit cards will be set up for your convenience or you can get an application at any check-out counter.



**Complimentary "Mystery Discount" envelope with each New Paris credit card application received from now until Saturday, April 11th, 1987.**

# Magazine says profs to be freed

BEIRUT, Lebanon (AP) — The Beirut magazine Ash-Shiraa said Friday that three kidnapped Americans and an Indian would be freed soon.

The report followed an appeal to the Modern kidnappers by U.S.-affiliated Beirut University College to have hostage Alann Steen, 47, of Boston, admitted to a hospital.

Fellow hostage Jesse Turner, 39, of Boise, Idaho, warned in a three-minute videotaped message Thursday that Steen might die any time.

The kidnappers said earlier Steen was gravely ill with high blood pressure. Ash-Shiraa quoted unnamed sources as saying Steen, Turner, Robert Polhill, 53, of New York City, and Mihleshwar Singh, 60, an Indian citizen and resident alien of the United States, "are now in the hands of a security department."

The four were abducted from Beirut University College campus in west Beirut on Jan. 24 by gunmen disguised as police.

The group claiming responsibility, Islamic Jihad for the Liberation of Palestine, is believed made up of pro-Iranian extremists. "The last obstacle that delays the release of the four teachers is finding the proper scenario to close the case," Ash-Shiraa said. It did not elaborate.

The magazine is the same one that broke the news of secret U.S. arms sales to Iran.

In Washington, the State Department said Friday that Steen's kidnappers were engaging in "repugnant" behavior in refusing to release him unconditionally "so he can receive medical attention."

In his videotape, Turner said Steen would be released if Israel frees 400 Arab prisoners.

Sheik Mohammed Mehdi Shamseddine, Lebanon's most senior Shiite Muslim cleric, pleaded Friday for the release of Steen and the three other hostages. He said in a sermon, "His (Steen's) case should be dealt with in a spirit of Islamic tolerance, and his kidnappers' colleagues should be treated likewise."

Kidnapping should be brought to an end altogether. This is an un-Islamic method that we do not approve of."



Nurse tries to aid wounded policeman during riots during papal 'Mass of Reconciliation' AP Laserphoto

# Police open fire on protesters during papal mass in Chile

SANTIAGO, Chile (AP) — Remains of police in front of Pope John Paul II fired guns, tear gas and water cannons Friday on chub-wielding anti-government protesters as the pontiff celebrated a "Mass of Reconciliation" in a Santiago park.

Witnesses said at least 28 people were injured, including a priest. Police said 38 troopers were injured, four seriously, and that a journalist and two other Chileans were wounded by gunfire.

A young woman was seen bleeding, possibly from buckshot, although it was not clear what kind of projectiles the police were firing.

John Paul appeared shocked, pressing his hands to his forehead and gazing out at the crowd of 600,000 people. Vatican security guards rushed to the altar, on which "I am Life" was written in Spanish.

Later the pope met with representatives of all opposition political parties and said, "I ask all of you to strongly reject the temptation to resort to violence." The parties, including the Communist Party, promised in a letter to work unreservedly toward ending the military dictatorship. Church officials said after the

Mass that pope was aware of what was happening and that everyone on the altar, including John Paul, felt the effects of the tear gas. The pope was not injured.

"He watched it as we all did — with severity," said Bishop Francisco Cox, head of the Chilean organizing committee for the papal visit. "And he said at the end that he was happy to see the participation of all (the crowd), despite the provocation."

Some battles between police and hundreds of people protesting the military government took place only 50 yards from the pope, who skipped over parts of his prepared homily to end the Mass more quickly.

Priests who had assisted the pope during the Mass came down from the altar to calm the crowd and to stop organized columns of masked protesters, many yelting clubs, who were provoking the disturbances.

Policemen had to duck behind the papal altar to avoid flying rocks. A green-uniformed trooper helped a black-robed nun up a ladder so she could flee the confusion. The protesters virtually took over a section of the vast congregation,

setting up barricades and causing disruption from the time John Paul appeared.

Police vans circled the protest area, firing tear gas canisters. Priests on the platform wiped their eyes and children cried and choired. Women were seen falling to the ground, apparently because of the gas.

Associated Press reporter Eva Vergara saw police firing their 38-caliber service revolvers over the heads of demonstrators.

The police added chemicals to the water in the water cannons to cause a burning sensation on contact with skin. The Red Cross said it aided nearly 600 people, mostly tear gas victims.

Police said Maria Olga Allemann, a photographer for the leftist Chilean opposition magazine "Analistas," was wounded by gunfire, and Hector Lopez, a Chilean cameraman, was struck by a rock.

Police, who initially said Lopez was wounded by gunfire, said he was in grave condition. They said Pedro Lizama, 21, and Jose Aguilera, 13, were also wounded by gunfire.

# Anti-papal protest stirs Buenos Aires clash

BUENOS AIRES, Argentina (AP) — Police on Friday fired tear gas and chubbed demonstrators protesting Pope John Paul II's upcoming visit to Argentina.

A police officer was shot and wounded and about 50 protesters were arrested, authorities said.

Police clashed with demonstrators at the downtown Plaza of the

Republic during the evening rush hour, the official news agency Telam reported. The protest was organized by a leftist magazine called "Pigs and Fishes," Telam said.

It said there were "anarchist groups" among the demonstrators, but did not elaborate.

A police report said Inspector Jose Omar Tirelli was slightly injured by

gunfire during the clash. It said about 50 demonstrators were arrested but gave no further details.

Telam reported that after Tirelli was wounded, other officers began beating demonstrators with clubs and firing tear gas grenades. A water cannon sprayed some of the demonstrators, who threw rocks at police and set fire to garbage cans, the agency said.

# Sale of duchess' jewelry brings over \$50 million

GENEVA (AP) — Prices soared at a spectacular pace in a sea of diamonds and pearls as the late Duchess of Windsor's jewelry auction Friday. The two-day "sale of the century" raised \$50 million to benefit AIDS research and cancer research.

Sotheby's announced that the grand total of the two-day auction was \$50,281,887, including the 10 percent buyer's fee. It was more than six times the previous world record price for a single piece of jewelry. The money will help fund research labs to be completed in John Block of Sotheby's North 1987.

# FARM FOR SALE

The Government is offering for sale a 40 acre dairy farm located 3.5 miles north of Gooding, Idaho. Legal description: Township 5 South, Range 15 East, Boite Meridian, Section 18; SE 1/4 NE 1/4. Improvements consist of a dwelling, dairy barn, other outbuildings, 40 shares of Big-Wood Canal water, with gravity flow irrigation.

This property may be purchased for cash or on terms of not less than 15 percent down with a balance payable in not more than 25 equal installments of 11 percent interest. Offer must be in the form of sealed bids and must be accompanied by a cashier's check, certified check, postal or bank money order or bank draft payable to Farmers Home Administration (FmHA) for at least ten percent of the bid. The required bid forms and further information concerning the property may be obtained from the FmHA County Office located at 157 Main Street, Gooding, Idaho 83301, telephone number (208) 934-4468. Bids will be accepted only on Form FmHA 1955-46, "Invitation, Bid and Acceptance". The sealed bids will be opened at 3:00 p.m., on April 9, 1987, at the FmHA County Office located at 157 Main Street, Gooding, Idaho 83301. The outside of the sealed envelope will be clearly marked with the following identification: "SEALED BID OFFER, Date of Bid Opening April 9, 1987; FmHA Advice No. 12299; Property Location 3.5 miles north of Gooding, Idaho." Bidders requesting terms other than cash will be required to submit a current financial statement and evidence of repayment ability with their bid. The Government reserves the right to reject any and all bids. Acceptance of any bid based on the condition that FmHA finance all or a portion of the sale on terms will be subject to approval of the bidder's credit by FmHA. The property will be sold without regard to race, color, sex, age, religion, national origin or marital status.

**MEET CARL SKLAVOS**  
**PKA KARATE**  
**World Champion Flyweight**  
 Signing Autographs at Smith's Food King  
**SATURDAY, APRIL 4 From 4 p.m. to 6 p.m.**



1913 Addison Ave. E. Twin Falls



# It's "Mystery"

# 10% - 15% - 20% - 30%

## NOW THROUGH SATURDAY, APRIL 11TH.

Mystery Discount envelopes are in the mail now. Another special advantage for holders of Paris charge cards. Save from 10% to 30% on purchases you make from now until April 11th. There's no time like right now to get a Paris charge card of your very own. With any current bank card or major credit card we can issue you a Paris charge card . . . in minutes. Don't have a bank card anymore? We'll still open your Paris charge account by quickly completing our regular application. There is NO annual fee for owning a Paris charge card.

### \$15.00 CERTIFICATE

For Greenery of Your Choice for Every NEW Paris Charge Account Opened During the Month of April 1987 at

MAGIC GARDENS  
560 Filer Avenue  
Twin Falls, Idaho 83301

Present at time of Purchase

Expires May 31, 1987

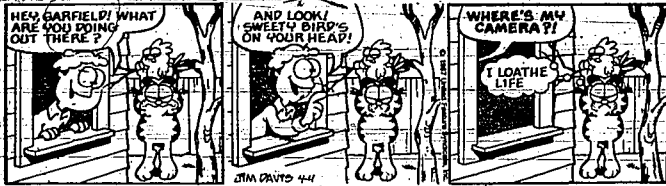
THE PARIS COMPANY, INC.

# Comics

## Frank and Ernest



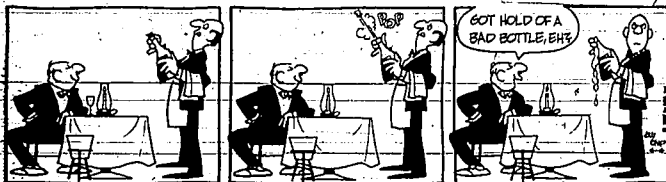
## Garfield



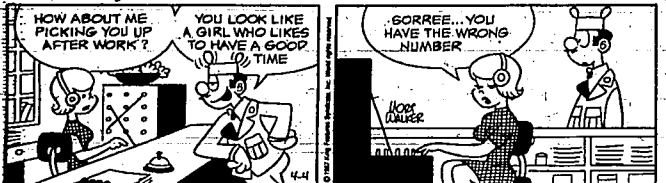
## Hagar the Horrible



## The Born Loser



## Beetle Bailey



## Gasoline Alley



## Peanuts



## Blondie



## Andy Capp



## Broom-Hilda



## Wizard of Id



## Hi and Lois



**ACROSS**

- Deprivation
- Postal address
- Slight breeze
- Alone
- "One for all"
- Continent
- Of the ear
- Cumulative
- Hitchcock's "\_\_\_\_\_ Window"
- Shaw vegetable
- Academic specialties
- Siblings
- Dodge
- "On the Nile"
- Mauna
- Scarcely
- Sun or orbit
- Tobacco unit
- Scout

**DOWN**

- Static
- Close the norm
- Edible tuber
- Back fence
- Long tooth
- Wrongful act
- Vow
- West Side
- Story pit
- Horse breed
- Flowery
- Spasmodic
- Mineral stone
- Swearers
- NY Island
- Stiv
- Info
- And so forth
- Deeply
- Touching
- Verd work
- Wanderer
- 47 Lily plant
- 51 Bong for Callas
- 48 Nuzzle
- 49 Like some
- 45 Bandy ridge
- 46 Vehicles
- 50 Fr. department
- 53 Inlets

©1987 Tribune Media Services, Inc. All Rights Reserved. 4/4/87

### L.M. Boyd What's what

**THE LONER LIKES GRAY.** Those who think color choices suggest character traits contend people who like gray are loners.

If you got caught stealing stuff worth more than 40 shillings in 18th century England, you faced a definite death by hanging.

A black New Orleans planter in the 1830s owned 77 black slaves.

A jockey known here only by the name of Hayes won both the first and last race of his career on June 4, 1923. He got off his horse and dropped dead.

Political candidates in Britain aren't nominated; they're "suggested."

As for animals that eat animals, the biggest-of-animals—whales prefer the littlest of animals, or almost the littlest—krill.

A duck has a lens in its third eyelid, a spare lens. That eyelid when closed works like a skin diver's ground goggles. The duck sees underwater through it.

A month-old human embryo is 10,000 times larger than the fertilized egg. If a baby kept on growing at the rate it grows during its nine months in the womb, on its first birthday it would weigh 160 pounds.

Your brain sends messages to your feet at a speed of 240 mph.

**ABE'S THRIFT**

Thrifty fellow, Abe Lincoln. When asked if he wanted the White House painted again, he said, "Just repaint the front." Or words to that effect.

Fish and snakes have glossy covers on their eyes. Snakes shed theirs.

Fish don't.

Windmill experts say a 10-inch wheel generates eight times more power than a 5-inch wheel.

Aristotle was under the curious impression that he could judge a man's character just by the shape of the nose.

Nobody can prove Betsy Ross sewed together the first U.S. flag. Nor that she didn't.

The asparagus fern is neither an asparagus nor a fern—but a sort of lily.

To get "Boyd's Curiosity Shop" by return mail, send \$12 to "Boyd's Book," Crown Syndicate, Inc., POB 8918, Seattle, WA 98109.

## Daily Horoscope

**GENERAL TENDENCIES:** Follow your hunches in accomplishing and achieving the aims that most impel you forward. Be wary of upsetting aspects that can cause intermittent problems.

**ARIES** (March 21 to April 19): An early start at shopping and marketing is wise, since later situations arise that could be upsetting.

**TAURUS** (April 20 to May 20): You have an opportunity to get your surroundings improved. Get your budget in shape for a greater abundance.

**GEMINI** (May 21 to June 21): You are full of ambition and can accomplish a good deal. Your friends may be too busy to help you now.

**MOON CHILDREN** (June 22 to July 21): Study your personal wishes and plan how to gain them quickly. Steer clear of an upset partner.

**LEO** (July 22 to August 21): Contact as many friends as you can and

**LIBRA** (September 22 to October 22): You have a fine idea to put into operation, but soon a newcomer can deter your progress.

**SCORPIO** (October 23 to November 21): You can make fine plans with your mate today, but later you may find it hard to get rid of a distraction.

**SAGITTARIUS** (November 22 to December 21): Contact a clever person who can be helpful to you. Don't take any risks while driving.

**CAPRICORN** (December 22 to January 20): Make a constructive plan for the day and follow through without making any changes.

**AQUARIUS** (January 21 to February 19): Make arrangements for recreation. You may be tempted to change the schedule, but don't.

**PISCES** (February 20 to March 20): Study the situation at home and permit it to settle their own problems. Be clear of arguments.

**IF YOUR CHILD IS BORN TODAY**—he or she will get along nicely with those around him; or her. Give as much education as you can afford since your progeny can learn quickly and well. Upon reaching adulthood this child will want to tackle difficult projects and will require special knowledge.

**Yesterday's Puzzle Solved:**

1	2	3	4	5	6	7	8	9	10	11	12
13	14	15	16	17	18	19	20	21	22	23	24
25	26	27	28	29	30	31	32	33	34	35	36
37	38	39	40	41	42	43	44	45	46	47	48
49	50	51	52	53	54	55	56	57	58	59	60
61	62	63	64	65	66	67	68	69	70	71	72
73	74	75	76	77	78	79	80	81	82	83	84
85	86	87	88	89	90	91	92	93	94	95	96
97	98	99	100	101	102	103	104	105	106	107	108
109	110	111	112	113	114	115	116	117	118	119	120

©1987 Tribune Media Services, Inc. All Rights Reserved. 4/4/87

# Entertainer dedicates replica of cabin

OMAHA, Neb. (AP) — Marie Osmond helped dedicate a replica log cabin at a Mormon Cemetery, saying she felt she represented a part of the heritage of Mormons who settled there.

Marie Osmond, a member of the Church of Jesus Christ of Latter-day Saints, on Thursday cut the ribbon to the cabin, a replica of the more than 1,000 Mormon cabins that lined the Missouri River from 1846 to 1849, including those that made up the Winter Quarters here.

"I remember visiting the Winter Quarters with my family when I was about 12," said Marie Osmond. "In Omaha for a series of performances. It makes you think about the people, their hardships, frustrations and sacrifices to seek a place to worship the Heavenly Father in peace and freedom."

Miss Osmond said her ancestors did not come through the Omaha Winter Quarters area.

"They went up and through Wyoming and Idaho. I know many people whose ancestors did come through here," she said. "I'm here because I think I represent a part of the heritage of the Mormons who settled here."

## Band leader Herman in improving condition

DETROIT (AP) — Big band leader Woody Herman was in stable and improving condition Friday after being hospitalized for undisclosed reasons.

## 4,500 items from 1066 to Zurich

# Scholar lists what literate should know

SAN FRANCISCO (AP) — A scholar propounded a list Friday of 4,500 names, places, myths, events and phenomena he says are — or should be — common knowledge to every culturally literate American. The list covers an eclectic range from Betsy Ross to George Garbo, Columbus to the Star-Spangled Banner, Bach to the Beatles, and that is long on Anglo-Saxon and Greco-Roman traditions and short on other cultures.

The author, English Professor E.D. Hirsch Jr. of the University of Virginia, coupled his list with an attack on bilingual education and what he called the "strong and noble ideas" that have dominated American education for the past four decades.

Hirsch's misguided ideas, he said, include the notion that the content of what children read doesn't matter, that in deference to the poor it should not be too hard, arcane or old-fashioned.

Hirsch's list appears as a 64-page appendix to a book, "Cultural Literacy: What Every American Needs to Know," which is released at an Education Writers Association meeting.

The list starts with 1066 — date of the battle of Hasting — and ends with Zurich. In between are a panoply of gods, generals, politicians, poets, scientific terms, titles and



MARIE OSMOND Visits Mormon historic site



PRINCE CHARLES Joins author for trip

## Prince Charles takes vacation in Botswana

GABORONE, Botswana (AP) — Britain's Prince Charles did not return home at the end of his official southern African tour as previously announced, but flew to Botswana for a private visit. Buckingham Palace confirmed Friday that the Prince of Wales was on a private visit to Botswana with his friend, Sir Laurens van der Post, a South African author. The palace said he will arrive in London on April 8.

His official trip included visits to Swaziland, Malawi and Kenya checking on Commonwealth Development Corp. projects.

## Country music star wants to meet Bigfoot

LOS ANGELES (AP) — He's Haggard. He's turning 50. And he'd like to meet Bigfoot.

Country music czar Merle Haggard will celebrate half a century on Monday, and he said he planned to keep on chugging. "I feel great," he said as he prepared to perform Friday night with Alabama and The Judds in Inglewood.

"Forty was the bad one. It tore me up," Haggard said. Known for his hard living and bar-room music, Haggard added: "I'm having more fun than ever. I want to live to be around as long as George Burns. I'm happy to be around and I want to show my enthusiasm through good music."

Haggard, who has been performing hits like "Ole From Muskegon, Mama Tried" and "I Think I'll Just Stay Here and Drink" for three decades, recently moved from Bakersfield to a small northern California town he'll identify only as "Bigfoot Country."

"Yeah, I'd like to meet that old fellow, Bigfoot," he said, referring to the legendary beast that stalks the mountains. "I have an idea he might be a pretty good guitar picker."

high-brow trivia that Hirsch said every high school graduate should know.

U.S. Secretary of Education William J. Bennett hailed it as an "important book that could, and should, change what goes on in our nation's classrooms."

Ronald Reagan made the list, as did Lee Iacocca, Jimmy Carter, Jesse Jackson and Norman Mailer. Gary Hart, Frank Sinatra and Woody Allen did not.

Neither did Santa Claus, but Hirsch said that because even illiterates have heard of him. Gay rights made it. AIDS did not. Neither did a single television show, although Hirsch confessed to reporters that both "M-A-S-H" and "Sesame Street" probably deserve spots.

The roster includes Ginger Rogers and Fred Astaire, Billy Graham and Betty Friedan, the Avatallan Khondome and Mayo Bailey, id phrases starting with "black" (including Hills, holes, list, Muslims and Power), eight with nuclear (family, free zone and power, among others), and "Remembrance" followed by "Pearl Harbor," "the Alamo!" and "the Maine!"

Hirsch said he tested his selections on 600 lawyers, and they got 92 percent right. The list, compiled with the aid of historian Joseph Kett and physicist

James Treff, also Virginia professors, is provisional and additions and deletions are inevitable, Hirsch said.

He said he was neither "advocating a list of great books that every child in the land should be forced to read" nor seeking a national curriculum.

"Preschool is not too early for starting earnest instruction in literate national culture," he said. "The list includes Emiliano Zapata, the champion of the Mexican revolution, but not Cinco de Mayo, the Mexican independence day."

Hirsch criticized those who would give equal place in U.S. schools to Hispanic and American cultures.

"Often the term bilingualism is used to cover the fact that you're talking about kids who are not literate in any culture or in any language," he said.

Hirsch said children should understand elements of our literary and mythic heritage that are often alluded to without explanation, such as Adam and Eve, David and Goliath, the 23rd Psalm, Humpty Dumpty, Paul Bunyan, Satan, the Ten Commandments and Tweedledum and Tweedledee.

Hirsch is also working on a dictionary to define his cultural list, and a separate compilation of words and concepts children should know by fifth grade.

## Private service held for Army adviser

FORT CLAYTON, Panama (AP) — A private military memorial service was held Friday for Sgt. 1st Class George A. Frongis, the first U.S. military adviser to be killed in battle in El Salvador.

Frongis' Panamanian wife, Celinda, and two young children were present at the hour-long service in a chapel at Fort Espinar, 42 miles north of Panama City at the Atlantic terminus of the Panama Canal.

The 27-year-old Green Beret was killed early Tuesday during an attack by leftist rebels on a Salvadoran army garrison in El Paraiso.

## Complaint about outhouse incident goes to courthouse

WEST BEND, Wis. (AP) — Rodney Temple and his wife have taken their complaint from the outhouse to the courthouse.

Temple, 29, and his wife, Roberta, 22, of Hartford, filed suit in Washington County Circuit Court alleging he was injured when four men overturned a portable outhouse while he was inside.

Temple seeks \$10,000 for pain and suffering. Mrs. Temple, who was not present when the privy was toppled, seeks \$200 for her husband and loss of companionship.

According to the suit, filed Wednesday, and police reports, Temple went into an outhouse near a

baseball diamond in Richfield early last May 17. While he was inside, he said, the men "entered into a conspiracy" to tip over the outhouse.

Temple said he was pinched in the door as it hit the ground. He claimed he suffered a deep cut on his left ear and scrapes and bruises. He was then returned to Hartford Memorial Hospital.

The Washington County District Attorney's office refused to file criminal charges when asked in January, saying too much time had elapsed since the incident.

Two of the defendants said Thursday that Temple had no way of knowing for certain who tipped over the outhouse.

## Worker crushed by crates of mirrors

GRAND RAPIDS, Mich. (AP) — A 35-year-old construction worker was crushed by 4,800 pounds of mirrors when two crates he was unloading broke open, authorities said.

Michael VanFimmerer of Grand Rapids, an employee of Fryling Construction Co., died Thursday of head injuries when the crates broke as he

was unloading a truck at an apartment complex, said Kent County Sheriff's Deputy Harlow Blumenstein.

The mirrors were on the back of the truck and he was trying to undo one of the crates when the crate broke and fell on him, Blumenstein said.

**SMORGASBORD**  
SATURDAY NIGHT \$3.25  
5:00 TO 9:00 P.M. ALL YOU CAN EAT

**SPECIAL SUNDAY**  
11:00 A.M. - 3:00 P.M. \$3.65  
ALL YOU CAN EAT

**DEPOT GRILL & CABOOSE**  
545 SHOSHONE ST. S. 733-0710  
OPEN 12 HOURS DAILY

**LAWN BOY®**  
**SPRING TUNE-UP**

- Ignition system and switch inspection
- Clean carburetor air filter
- Sharpen and balance blades
- Make any adjustments required

**FOR ONLY \$24.95** (Parts Extra)

(Self propelled models \$29.95)

Fast Service By Factory-Trained Mechanics  
Free Parking In our lot while shopping at  
Cain's Service Center (Side Entrance)  
Offer Good Through April Only

**Cain's**

**MOVIES**

**SPECIAL**  
ON SAT-SUN: FROM 12 TO 6 P.M.  
ALL ADULTS ARE \$3.50 AND ALL SUNDAY NIGHT AT MOTOR-VU  
PLUS DURING APRIL  
MONDAY IS LAURENCE NIGHT — ALL WOMEN ONLY \$3.50  
TUESDAY IS MARY'S NIGHT — ALL MEN ONLY \$3.50

**MOTOR-VU DRIVE IN**

**WITCHBOARD**  
OPEN FRI.-SUN. WITCHBOARD AT 8:30 FRIDAY 7:00 10:00  
When you open the door to the unknown... or who will drop dead!

**MALL CINEMA**  
WINNER OF 4 ACADEMY AWARDS INCLUDING BEST PICTURE — BEST DIRECTOR — TOM BERENGER WILLEM DAFOE  
DAILY 7:10-9:20 SAT-SUN 12:30-2:30 5:00-7:10-9:20  
**PLATOON**

**GOODING CINEMA**  
OPEN FRI.-TUES. SHOWING NIGHTLY 7:00  
"LEGENDS DO LIVE IF YOU TRULY BELIEVE."  
*City Wilderness*

OPEN FRI.-TUES. SHOWING NIGHTLY 9:00  
*A Nightmare on Elm Street 3: Dream Warriors*  
Get out alive.

**JEROME CINEMA**

**HELD OVER 2nd SMASH WEEK**  
DAILY 7:15-9:05 SAT-SUN 1:45 5:45-7:25 7:15-9:05  
*Manniquin*  
Some guys have all the luck!

ALL ADULTS \$2 CHILDREN \$1  
BACK BY POPULAR DEMAND  
DAILY 7:00-9:00 SAT-SUN 1:00-3:00 5:00-7:00-9:00  
*Crocodile DUNDEE*  
PAUL HOGAN

DAILY 7:10-9:00 SAT-SUN 1:40-3:30-5:20 7:10-9:00  
The door to the unknown...  
**WITCHBOARD**

DAILY 7:20-9:10 SAT-SUN 1:50-3:40-5:30 7:20-9:10  
"LEGENDS DO LIVE IF YOU TRULY BELIEVE."  
*City Wilderness*

**TWIN CINEMA**

Gene Hackman **HOODLERS**  
DAILY 7:10-9:15 SAT-SUN 12:15-2:30 4:45-7:00-9:15

MEL GIBSON **LETHAL WEAPON**  
DAILY 7:15-9:20 SAT-SUN 5:10 7:15-9:20

DAILY 7:10-9:05 SAT-SUN 1:25-3:20 5:15-7:10 9:05  
ALL NEW!  
"LEGENDS DO LIVE IF YOU TRULY BELIEVE."  
*POLICE ACADEMY 4*

DAILY 7:05-9:00 SAT-SUN 1:20 3:15-5:10 7:05-9:00  
"Do you recognize me? I tried to be a respectable citizen."  
*Blind Date*  
KENNEDY

DAILY 7:15-9:00 SAT-SUN 1:45-3:35-5:25 7:15-9:00  
"LEGENDS DO LIVE IF YOU TRULY BELIEVE."  
*City Wilderness*

**KTVE K38 MATINEE MOVIE**  
THIS SAT.-SUN. SEE A GREAT MOVIE AT \$1.00 PER PERSON — PLUS CIN-E-BEAR WILL BE PRESENT. WITH PRIZES AND SURPRISES.  
ALLY SHEEDY, STEVE GUTTENBERG

SAT.-SUN. 12:30-2:30 ALL SEATS \$1.00  
**SHORT CIRCUIT**  
Something wonderful has happened... No. 5 is alive!

STORE HOURS:  
SATURDAY 10-6  
SUNDAY 12-4

# THE BON TRIANGLE SHOPS VALUE

TWIN FALLS

## Spring SALE of the season

## for the entire family

 <p><b>7.97</b></p> <p><b>MISSES CAMP SHIRTS</b> Reg. 10.99. Assorted prints. Triangle Misses Sportswear, not available in Bellevue Square.</p>	 <p><b>4.97 or 2/\$8</b></p> <p><b>MISSES TANK TOPS</b> Misses s-m-l. Women's sizes 18/38-24/44. <b>5.97 or 2/\$10.</b> Triangle Misses Sportswear, not available in Bellevue Square.</p>	 <p><b>20% OFF</b></p> <p><b>MISSES ROLL TAB BLOUSES</b> Reg. 14.99. Also women's sizes 38-46. reg. 16.99. <b>20% off.</b> Triangle Misses Sportswear, not available in Bellevue Square.</p>	 <p><b>9.97</b></p> <p><b>MISSES-PULL-ON PANTS</b> Reg. 12.99. Basic and fashion colors; sizes 12-18. Misses Sportswear, not available at Bellevue Square.</p>
 <p><b>5.97-7.97</b></p> <p><b>GIRLS 4-14 SEPARATES</b> 100% acrylic-fleece tops and bottoms. Sizes 4-6X. <b>5.97</b> ea. pc. 7-14, <b>7.97</b> ea. pc. Triangle Girlsweare.</p>	 <p><b>3.97-4.97</b></p> <p><b>GIRLS 4-14 TANK TOPS AND SHORTS</b> Ribbed tank tops and solid color twill shorts. Triangle Girlsweare.</p>	 <p><b>7.97-9.97</b></p> <p><b>JUNIOR CAMP SHIRTS</b> Reg. 9.99-12.99. Oversized styles in solids, plaids and stripes. Triangle Girlsweare.</p>	<p><b>25% OFF</b></p> <p><b>ENTIRE STOCK JUNIOR DENIM JEANS</b></p> <p>Reg. 24.99-34.99. Save on decorated and stonewash denim jeans from such names as Gitanorm and Fittinotti. Also save on Jr. Plus sizes 32-40 Jr. Plus available where normally sold.</p>
 <p><b>5.97-6.97</b></p> <p><b>KNIT SHIRTS</b> Reg. 7.99. Save 22-25% on short sleeve fashion and basic styles.</p> <p><b>20% OFF PANTS</b> Reg. 7.99-15.99; <b>6.39-12.79.</b> T-wills and denims. Triangle Boys 4-18.</p>	 <p><b>20-25% OFF</b></p> <p><b>ENTIRE STOCK SHORT SLEEVE DRESS SHIRTS</b> Reg. 10.99-13.99. <b>8.79-11.19.</b> Kentfield poly/35% cotton and luxurious 100% polyester dress shirts. Neckwear. <b>5.97.</b> Triangle Mensweare.</p>	 <p><b>25% OFF</b></p> <p><b>ESP BRUSH AND TWO HORSE DENIM JEANS</b> Reg. 24.99-29.99. Cut with extra fit in the seat and thigh. 32-40 waist. Triangle Mensweare.</p>	 <p><b>20% OFF</b></p> <p><b>HANES RED-LABEL UNDERWEAR</b> -Briefs, sizes 30-42, reg. 3/6.99. <b>3/5.59.</b> T-shirts, s-m-l-xl, reg. <b>3/9.59-3/7.67.</b> Men's Furnishings.</p>

INQUIRE ABOUT THE MANY ADVANTAGES OF A BON CHARGE CARD

Store Hours: Mon.-Thurs. 10-6; Fri., 10-9:00  
Sat. 10-6; Sun. 12-4:00

FOR YOUR SHOPPING CONVENIENCE, CHARGE IT ON YOUR  
BON, AMERICAN EXPRESS, VISA, OR MASTERCARD ACCOUNT.  
TO ORDER CALL: TWIN FALLS 734-4800.



## Carbon monoxide may be Paul odor source

By ANNETTE CARY  
Times-News writer

**RUPERT** — Carbon monoxide fumes from a nearby bus garage may be responsible for a mysterious rash of illnesses at the Paul Elementary School.

Principal Frank Peterson says he and representatives from the state Labor and Industrial Services Department and Industrial Resources of Meridian were on the roof of the school this week checking sewer vents when they smelled the fumes.

A bus was being warmed up in a garage door and the fumes were being blown to the fresh air vents, he said. A measurement of the carbon monoxide level on the roof

showed it was slightly above normal, as was the carbon monoxide level in the new wing of the school, Peterson says.

When the test was done, only one bus was running in the garage. But during a normal school day 10 to 15 buses may be warmed up at once, he says.

Prevailing winds in the area are from the west and the bus garage sits to the west of the school, he says.

The fresh air vents suck the fumes into the building, trapping them in the energy efficient building, except when the children open and close doors to the classrooms, he says.

The district will consider raising the intake stack or moving it, he says. They also

can adjust a "time" clock that regulates the vent so that no air is sucked into the buildings when the buses are running in the garage, he says.

Peterson says of the bus exhaust that "we're hoping that 1987" will be a better year.

However, he hesitated to say the exhaust was definitely the cause of the school's odor problem.

"At this point I wouldn't guarantee it," he said. "At this point, I'd hate like heck to say it's."

Earlier, school officials had said that they believed a leak in the sewer line was behind complaints of a foul odor. Some parents and teachers said children had symptoms of lethargy, stomachaches, headaches, dark

circles under their eyes, puffy skin, lip sores and skin rashes.

However, even after the sewer line was repaired, the complaints continued, and angry parents demanded the school board take action at a March 17 meeting.

Several batteries of tests have found no health hazards in the building's air. These tests have shown that the Paul school had far below the allowable concentrations of air contaminants, including formaldehyde, carbon monoxide, carbon dioxide, hydrocarbon vapors, fibrous materials such as asbestos or fiberglass, plant fibers and nuisance dust.

The board agreed at the March meeting to close up the school over this week's spring break and repeat the battery of tests.

Several parents were present at the later inspections of the school this week when 10 bus fumes were discovered, Peterson said.

"If they get behind and support it, I might work out," he said.

The possibility that the problem might be psychosomatic in nature has been raised at school board meetings, although not by board members or school administrators.

"We've been told that most of the sickness is psychosomatic," said patron Dave McMillan in March. "It had to be then there are a lot of crazy people over here."

However, another parent, Chris Gillette labeling herself part of "the silent majority," said neither her children nor the majority of the students at the school were ill.

## Corder law: Police work popular with family

By BONNIE BAIRD JONES  
Times-News writer

**TWIN FALLS** — Nobody has ever proven that the call of law enforcement work is hereditary, but it seems like a real possibility in the Corder family.

Commander Garry Corder of the Twin Falls Police Department grew up in a law enforcement household. He now has 25 years experience, all as a member of the city police department, and heads the detective division for that agency.

His father, the late Paul Corder, was a long-time Twin Falls County sheriff until his death in 1978. He had also worked in other law enforcement positions, including Kimberly police chief, while Garry was growing up.

It was probably no surprise to the family that Garry Corder would follow in his father's footsteps.

But the Corder tradition has continued much further than that. It's like father, like grandfather, like brother, until now there are four police officers working in Magic Valley whose name tags read "Corder" and all from a single family.

All three of the sons of Garry and Norma Corder of Twin Falls have followed their father into police work. Garry said he tried not to influence his sons in their choice of careers, but he isn't sorry about their decisions. He is proud of all three and believes they are all good officers, he said.

Nathan Corder is a police officer in the city of Jerome. Cloyce Corder works for the Filer city police and Todd Corder, the oldest of the three but the last to conform, has just joined the Ketchum City police department.

Nathan Corder, 25, was the first to follow the family tradition. Although he originally wanted to be an engineer, he gave up that idea when he went to work for Jerome City as a patrolman at age 19. He qualified for the Police Officers Standards and Training Academy, and graduated as a certified officer. Currently he is acting night shift sergeant in Jerome.

He says he was probably influenced in his choice of careers because his father has been in police work as long as he could remember. He hopes to move into strictly investigative work at some future time, and has applied for a position with the U.S. Marshall's Department in Boise.

"I like working in a small town. It's generally routine, we have a little excitement now and then," he says. "It's the most rewarding for me to be able to do something nice for people occasionally."

The Jerome officer says he has no trouble living up to the police officer's image of being just a little more law abiding than the average citizen.

"I learned that at an early age. There's no problem — not when you grow up with a dad who's a police officer," he said.

He said he would encourage his own sons to get a college education and if they like law enforcement, to try for an area with better pay.

Sgt. Cloyce Corder, 24, joined the Filer Police Department in 1984. He is now assistant chief and training officer for the department, which consists of four officers, four reserves and two patrolmen. He said his father never urged him to consider police work as a career and the decision was his own.

"I have no desire to be a police chief or a sheriff. I want to stay in law enforcement and do a good job," Cloyce Corder said. "I like working on a small depart-



The Corder family's tradition of law enforcement lives on with Garry Corder, left, and sons, from right, Cloyce, Todd and Nathan

ment because once we start a burglary investigation or other case, it's our responsibility. We follow through the whole case."

He said he also enjoys his training responsibilities. He, too, is a certified officer and graduate of the POST academy.

Todd Corder, 28, took a little longer to decide on his current career. He joined the Ketchum Police Department

just a month ago. Before that he worked part-time for a private security business along with a full-time job. He said he was glad when Ketchum Police Chief Cal Nevland "was good enough to give me a year's opportunity to try my hand."

Todd plans to enter the POST academy program as soon as he can. He is also interested in the investigative areas of law enforcement.

"I've learned a lot since March 2 when I came to work here. I've been interested in law enforcement all of my life, but I can't say my father persuaded me. I had a year or two of other kinds of work and time to make up my mind."

He says Ketchum is an interesting place to be in law enforcement and he has no problem with the salary. • See POLICE on Page B3

## Warm weather jobs lower unemployment rate

By the Times-News  
and Associated Press

**TWIN FALLS** — Mild weather opened up more jobs outdoors and nudged the Magic Valley's unemployment rate down again during March.

The seasonally adjusted rate for the Twin Falls, Jerome, and Gooding counties dipped 0.1 percentage point to 5.6 percent. Idaho's unemployment rate made the same small drop, but

it leveled off somewhat higher at 6.1 percent.

The change was not considered significant by analysts at the Idaho Department of Employment, which released the monthly figures on Friday.

Unseasonably warm weather played a major role in the Magic Valley and statewide in job markets during March. Lon McDonald, department labor force analyst at Twin Falls, said,

"Good March weather caused local workers to return to jobs faster than expected," he said. Unemployment claims dropped significantly at the Twin Falls office.

Employers who hire for farm construction and other outdoors jobs were particularly active, McDonald indicated.

In the three-county area, 2,084 workers were estimated to be unemployed during March, 150 fewer than in February. The area had a job

gain of 980 workers to 31,513 during the month, he said. There were also more people with jobs and fewer without work than a year ago.

Statewide, the trend was much the same, with seasonal workers regaining jobs a month or more earlier than usual.

March was the first month since last July that the number of unemployed Idahoans fell below 27,000. But analysts remained "uncertain if" • See JOBLESS on Page B2

## Pay schedule leveled to avoid confusion in jail bond vote

By PAT MARCANTONIO  
Times-News writer

**TWIN FALLS** — If Twin Falls County residents approve a \$3.8 million bond for a new jail, taxpayers will see an annual increase of 16 cents per \$1,000 of taxable value on their property.

The figure is somewhat different than a previously proposed payback schedule in which the bond-levy amount varied.

Bud Way of Idaho First National Bank said the new pay schedule was developed to help ease confusion about the effects of the bond, which will finance a new 90-bed jail.

The issue goes before the public May 12.

County taxpayers are now paying 28 cents per \$1,000 of taxable value to pay for transportation and boarding of inmates in other jails, Way said.

The boarding outside of the county is a result of a court order that placed a cap on the population of the present jail.

Way had earlier proposed a bond-payback schedule where county residents would see an increase from the jail bond of 28 cents per \$1,000 of taxable value on 1987 tax bills. The increase would level off in 1989 at 15 cents for the remainder of the bond because the levy going to help transportation costs would be shifted to the bond payment.

But people complained the decreasing pay schedule was confusing, Way said. By leveling off the different figures in the first

proposal, he arrived at the new figure of 16 cents, which will remain constant during the life of the bond.

Again, the increase for the jail bond would be in addition to the levy county residents are already paying, Way said. But after a new jail is built, the levy for the transportation costs would be shifted to the bond payment.

The end result for the owner of a home valued at \$65,000, with a homeowners exemption, is an annual increase of \$6.57 to pay for a new jail, Way said.

The owner of a 300-acre farm with a taxable value of \$250,000 will pay an annual increase of \$45 for a new jail, Way said.

Way will contribute a financial fact-sheet about the bond for a brochure the Jail Advisory Committee is preparing in its campaign to promote the bond. On the sheet he will provide examples for different properties and how much their owners will pay for a new jail.

Way also reported that the estimated replacement revenue from a \$3.8 million bond will be about \$200,000, using conservative figures.

If the bond is approved, the county will have the funds by Aug. 1, says County Commissioner Jim Fraker. The bond will be invested while the new jail is being built.

Way said the County Board of Commissioners could see the investment revenue for 1987, but

• See JAIL on Page B3



A drawing of Obenchain-Wheat Insurance's new location, a remodeled, currently vacant retail building on Main Avenue

## Insurance firm to remodel new location

By BOB FREUND  
Times-News writer

**TWIN FALLS** — A Twin Falls insurance firm will wrap up a remodeling storefront at the southeast end of the downtown mall and move its offices there this spring.

Obenchain-Wheat Insurance will occupy the former Fashion Brokers of Twin Falls building, said Bob Freund, a partner in the firm.

The company is planning a \$300,000 remodeling project, which will put a new facade on the exterior and convert the retail store for offices. Construction is scheduled to begin within two weeks. The renovation should be completed in 60-90 days, Obenchain said on Friday.

The firm purchased the building from landlord Bill Koch of Twin Falls on Dec. 31 for an undisclosed price. The renovation has been under design for the past three months.

Obenchain-Wheat had outgrown its current offices four blocks away at 253 2nd Ave. N., Obenchain said. The new location will double the company's work space to 10,000 square feet from 5,000.

The shape of the building lends itself to the remodeling, he said. "For an insurance office, you need virtually a square building. You can have your work flow in the middle of it and your offices on the exterior," he said.

The building at 254 Main Ave. also has adjacent parking with nine private spots for staff and a city-owned lot immediately to the rear, Obenchain said.

The firm has been expanding its business, adding two new agents recently. It currently employs a staff of 22, including eight insurance representatives.

The company's move will fill the first store at the southeast end of the downtown mall. Built for Coast-to-Coast stores, the building most recently had been occupied by Fashion Brokers, a clothing store. However, the retailer went out of business, and the building has been vacant for the past 17 months.

Obenchain-Wheat Insurance and its predecessor, Obenchain Insurance, have been located along Second Avenue North since 1976. The firm also owns Barker-Obenchain Insurance in Buhl.



### Accusations linger about political meddling, male chauvinism

**SALT LAKE CITY (AP)**—The Mormon Church opens its 157th Annual General Conference on Saturday with a day of prayer and religious meditations and male chauvinism that have reopened old wounds in a state long polarized by religious differences.

While tensions over controversy at home, the Church of Jesus Christ of Latter-day Saints is also boasting major successes in its missionary program, the church says. It holds a record 33,000 missionaries in 1966, who number 216,210 converts, the highest since 1901.

During five, two-hour sessions Saturday and Sunday in the Tabernacle on Temple Square, audences will hear music and sermons from church leaders, including Ezra Taft Benson, the 62 million-member faith's 87-year-old president.

Benson, considered a prophet of God by 15 million members, drew fire from women in and out of the church with a February speech declaring women should shun the workplace and stay home in rear-children.

Critics said Benson was out of step with the times and had added a burden of guilt-to-families with financial problems.

Benson's remarks came when many had hoped the church, which fought hard against passage of the Equal Rights Amendment during the early 1960s, was softening its attitude.

Forty percent of the church's female members work, according to a Brigham Young University study.

The church also has been criticized for a decision last month to close the Hotel Utah, a downtown landmark for 66 years, and convert the state building into church offices.

The most severe criticism has come from state legislators and others angered by lobbying that helped kill a tax reform bill that would have eliminated deductions for charitable donations.

"We would dispose with the fiction that we are not going to have any voice in Utah's government," wrote Jo Calenderia of Murray.

Mormon officials say their concern was not lobbying, payment of which is a requirement for admission to Mormon temples. They say they would have used church-owned institutions as church-owned Brigham Young University, the Utah Symphony and private hospitals.

House Majority Leader Nolan Kavara, a Mormon and supporter of the flat tax, said it was the first time in his seven years as a lawmaker the church has intervened directly in a legislative debate.

### Clown brings ministry to Nazarene Church

**TWIN FALLS**—Kenneth Jay, theatrical performer in clownface, will appear at 6 p.m. Sunday at First Church of the Nazarene, 401 6th Ave. N. in Twin Falls.



**KENNETH JAY**  
Multi-media message

The measure, which would have replaced the state's graduated tax system with a flat tax, easily passed the Utah House of Representatives.

But it died quickly after a church lobbyist told the senate that the measure's opponents opposed eliminating the deductions.

Critics said the church, which asks members to donate 10 percent of their gross annual incomes, was trying to protect a major revenue source.

House Minority Leader Mike Dimitrich, a Democrat who is not a Mormon, said he would not receive complaints from constituents angry that the church, whose members make up about 70 percent of the population, could control a legislative debate.

In recent weeks newspapers have published a flow letters from readers. One writer urged citizens to disband the Legislature and government offices and elect a council of the state's business directly from Temple Square.

Normally the church restricts its political involvement to moral issues, he said. The church position is usually made public through sermons and lobbying but necessary.

Oscar W. McCubbin, a church attorney, conceded that the church's intervention had probably been decisive. He said the church was also concerned that repeal of deductions for churches would be a major item in talks with the federal Internal Revenue Service.

The church is trying to persuade the IRS to allow parents to deduct money used to support their own children who are missionaries, who receive no compensation from the church.

The church, which until 1976 barred women from the priesthood, is reporting strong growth in the West African nations of Ghana, Nigeria, and where membership has reached 8,500 in nine years of proselytizing.

Church spokesman Don Lejeune said the church is sending missionaries in Africa by opening a new mission in Zaire in July.

### LDS TV network broadcasts meeting

**TWIN FALLS**—The General Conference of the Church of Jesus Christ of Latter-day Saints will be held today and Sunday in Salt Lake City.

By means of the church's satellite television network, programming of the proceedings will be broadcast to thousands of meeting places throughout the world.

The general public, as well as church members, may attend the conference "teletcasts" at local

stake centers in Twin Falls, Filer, and Idaho Falls, according to Paul Carey, Burley, Rupert, Paul, Delta and Oakley. Conference sessions will be broadcast from 10 a.m. to noon and 2-4 p.m. both days. No admission charge is required.

Some conference proceedings will also be broadcast on KAMI Radio in Jerome, KMTV-TV Channel 11 in Twin Falls and King Video-cable cable system in Twin Falls.

### Clown brings ministry to Nazarene Church

"This program entitled 'My Joy Has Come In the Morning' in two parts, containing humor, illusions, juggling, twirling, large-screen video, music, poetry and dramatic readings of the scriptures."

Jay has performed on international and national television as well in shows across the United States, Europe and the Orient. He has been featured performer at Ringling Brothers Barnum and Bailey Circus and was acclaimed for his performances during President Nixon's inaugural ceremonies in 1969.

The public is invited to attend the performance. For information, call 733-6610.

Free, a national music ministry team of Luthers' Youth Encounter will be singing at both services as well as a special service at 9:30 a.m. The worship service will be held at 10:30 a.m. at 1943 Osterloo Ave. Sunday school will begin at 9:45 a.m. Services will be held at 11 a.m. and 7:30 p.m. on Saturday.

Alliance youth fellowship will combine with the regular Wednesday prayer and fellowship at 6 p.m. and prayer and Bible study.

On Friday, ladies' Bible study will be held at 9 a.m. and 6:30 p.m. and the church at 6:30 p.m. Bible study will be held at 6:30 p.m. at the church.

### Church services

**ASSEMBLY OF GOD**  
**TWIN FALLS**—Sunday school will begin at 9:45 a.m. at First Church of the Nazarene. Bible study and prayer will begin at 7:30 p.m.

**Methodist**  
**TWIN FALLS**—Sunday school for all ages will be held at 9:45 a.m. at First Church of the Nazarene. Bible study will be broadcast over radio station KRM-FM 91.9, 9 p.m. Children of the church, through grade will be held at 10:50 a.m. The evening service at 6 p.m., will feature the theme of "The Power of the Cross" and will be sponsored by the Men's Ministries after the service.

On Friday, ladies' Bible study will be held at 9 a.m. and 6:30 p.m. and the church at 6:30 p.m. Bible study will be held at 6:30 p.m. at the church.

Alliance Men will meet at 8 a.m. Saturday at the church. The church is also conducting the state's business directly from Temple Square.

**Episcopal**  
**TWIN FALLS**—Sunday school for all ages will be held at 9:45 a.m. at First Church of the Nazarene. Bible study and prayer will begin at 7:30 p.m.

**Calvary Chapel**  
**TWIN FALLS**—The movie "No Longer Alone" the story based on the teachings of John Wesley and Charles Wesley, will be broadcast at 9:05 a.m. on radio station KLiX. Adult Bible study will begin at 10 a.m. The morning service and children's Sunday school will begin at 7:30 p.m.

**Church of Christ**  
**TWIN FALLS**—Bible study for all ages will be held at 9:45 a.m. and 7:30 p.m. on Saturday. The church is also conducting the state's business directly from Temple Square.

**Presbyterian**  
**TWIN FALLS**—Sunday school for all ages will be held at 9:45 a.m. at First Church of the Nazarene. Bible study and prayer will begin at 7:30 p.m.

**Catholic**  
**TWIN FALLS**—Mass will be celebrated today at 8 a.m. and 6 p.m. at Immaculate Conception. Sunday Mass will be held at 8 and 10:15 a.m.

**Christian and Missionary Alliance**  
**TWIN FALLS**—Extension Sunday school will be held at 9:45 a.m. at 1943 Osterloo Ave. Sunday school will begin at 9:45 a.m. Services will be held at 11 a.m. and 7:30 p.m. on Saturday.

**First Baptist**  
**TWIN FALLS**—Sunday school for all ages will be held at 9:45 a.m. at First Church of the Nazarene. Bible study and prayer will begin at 7:30 p.m.

**United Methodist**  
**TWIN FALLS**—Sunday school for all ages will be held at 9:45 a.m. at First Church of the Nazarene. Bible study and prayer will begin at 7:30 p.m.

**Church of Christ, Scientist**  
**TWIN FALLS**—The lesson sermon will be held at 9:45 a.m. on Saturday. The church is also conducting the state's business directly from Temple Square.

**Second Baptist**  
**TWIN FALLS**—Sunday school for all ages will be held at 9:45 a.m. at First Church of the Nazarene. Bible study and prayer will begin at 7:30 p.m.

**Episcopal**  
**TWIN FALLS**—Sunday school for all ages will be held at 9:45 a.m. at First Church of the Nazarene. Bible study and prayer will begin at 7:30 p.m.

**Episcopal**  
**TWIN FALLS**—Sunday school for all ages will be held at 9:45 a.m. at First Church of the Nazarene. Bible study and prayer will begin at 7:30 p.m.

**First Baptist**  
**TWIN FALLS**—Sunday school for all ages will be held at 9:45 a.m. at First Church of the Nazarene. Bible study and prayer will begin at 7:30 p.m.

**Episcopal**  
**TWIN FALLS**—Sunday school for all ages will be held at 9:45 a.m. at First Church of the Nazarene. Bible study and prayer will begin at 7:30 p.m.

**Episcopal**  
**TWIN FALLS**—Sunday school for all ages will be held at 9:45 a.m. at First Church of the Nazarene. Bible study and prayer will begin at 7:30 p.m.

**First Baptist**  
**TWIN FALLS**—Sunday school for all ages will be held at 9:45 a.m. at First Church of the Nazarene. Bible study and prayer will begin at 7:30 p.m.

**Episcopal**  
**TWIN FALLS**—Sunday school for all ages will be held at 9:45 a.m. at First Church of the Nazarene. Bible study and prayer will begin at 7:30 p.m.

**Episcopal**  
**TWIN FALLS**—Sunday school for all ages will be held at 9:45 a.m. at First Church of the Nazarene. Bible study and prayer will begin at 7:30 p.m.

**First Baptist**  
**TWIN FALLS**—Sunday school for all ages will be held at 9:45 a.m. at First Church of the Nazarene. Bible study and prayer will begin at 7:30 p.m.

**Episcopal**  
**TWIN FALLS**—Sunday school for all ages will be held at 9:45 a.m. at First Church of the Nazarene. Bible study and prayer will begin at 7:30 p.m.

**Episcopal**  
**TWIN FALLS**—Sunday school for all ages will be held at 9:45 a.m. at First Church of the Nazarene. Bible study and prayer will begin at 7:30 p.m.

**First Baptist**  
**TWIN FALLS**—Sunday school for all ages will be held at 9:45 a.m. at First Church of the Nazarene. Bible study and prayer will begin at 7:30 p.m.

**Episcopal**  
**TWIN FALLS**—Sunday school for all ages will be held at 9:45 a.m. at First Church of the Nazarene. Bible study and prayer will begin at 7:30 p.m.

**Episcopal**  
**TWIN FALLS**—Sunday school for all ages will be held at 9:45 a.m. at First Church of the Nazarene. Bible study and prayer will begin at 7:30 p.m.

**First Baptist**  
**TWIN FALLS**—Sunday school for all ages will be held at 9:45 a.m. at First Church of the Nazarene. Bible study and prayer will begin at 7:30 p.m.

**Episcopal**  
**TWIN FALLS**—Sunday school for all ages will be held at 9:45 a.m. at First Church of the Nazarene. Bible study and prayer will begin at 7:30 p.m.

**Episcopal**  
**TWIN FALLS**—Sunday school for all ages will be held at 9:45 a.m. at First Church of the Nazarene. Bible study and prayer will begin at 7:30 p.m.

**First Baptist**  
**TWIN FALLS**—Sunday school for all ages will be held at 9:45 a.m. at First Church of the Nazarene. Bible study and prayer will begin at 7:30 p.m.

**Episcopal**  
**TWIN FALLS**—Sunday school for all ages will be held at 9:45 a.m. at First Church of the Nazarene. Bible study and prayer will begin at 7:30 p.m.

**Episcopal**  
**TWIN FALLS**—Sunday school for all ages will be held at 9:45 a.m. at First Church of the Nazarene. Bible study and prayer will begin at 7:30 p.m.

**First Baptist**  
**TWIN FALLS**—Sunday school for all ages will be held at 9:45 a.m. at First Church of the Nazarene. Bible study and prayer will begin at 7:30 p.m.

**Episcopal**  
**TWIN FALLS**—Sunday school for all ages will be held at 9:45 a.m. at First Church of the Nazarene. Bible study and prayer will begin at 7:30 p.m.

**Episcopal**  
**TWIN FALLS**—Sunday school for all ages will be held at 9:45 a.m. at First Church of the Nazarene. Bible study and prayer will begin at 7:30 p.m.

**First Baptist**  
**TWIN FALLS**—Sunday school for all ages will be held at 9:45 a.m. at First Church of the Nazarene. Bible study and prayer will begin at 7:30 p.m.

**Episcopal**  
**TWIN FALLS**—Sunday school for all ages will be held at 9:45 a.m. at First Church of the Nazarene. Bible study and prayer will begin at 7:30 p.m.

**Episcopal**  
**TWIN FALLS**—Sunday school for all ages will be held at 9:45 a.m. at First Church of the Nazarene. Bible study and prayer will begin at 7:30 p.m.

**First Baptist**  
**TWIN FALLS**—Sunday school for all ages will be held at 9:45 a.m. at First Church of the Nazarene. Bible study and prayer will begin at 7:30 p.m.

**Episcopal**  
**TWIN FALLS**—Sunday school for all ages will be held at 9:45 a.m. at First Church of the Nazarene. Bible study and prayer will begin at 7:30 p.m.

**Episcopal**  
**TWIN FALLS**—Sunday school for all ages will be held at 9:45 a.m. at First Church of the Nazarene. Bible study and prayer will begin at 7:30 p.m.

**Free, a national music ministry team of Luthers' Youth Encounter will be singing at both services as well as a special service at 9:30 a.m. The worship service will be held at 10:30 a.m. at 1943 Osterloo Ave. Sunday school will begin at 9:45 a.m. Services will be held at 11 a.m. and 7:30 p.m. on Saturday.**

**Alliance youth fellowship will combine with the regular Wednesday prayer and fellowship at 6 p.m. and prayer and Bible study.**

**On Friday, ladies' Bible study will be held at 9 a.m. and 6:30 p.m. and the church at 6:30 p.m. Bible study will be held at 6:30 p.m. at the church.**

**Church of Christ, Scientist**  
**TWIN FALLS**—The lesson sermon will be held at 9:45 a.m. on Saturday. The church is also conducting the state's business directly from Temple Square.

**Episcopal**  
**TWIN FALLS**—Sunday school for all ages will be held at 9:45 a.m. at First Church of the Nazarene. Bible study and prayer will begin at 7:30 p.m.

**Episcopal**  
**TWIN FALLS**—Sunday school for all ages will be held at 9:45 a.m. at First Church of the Nazarene. Bible study and prayer will begin at 7:30 p.m.

**Episcopal**  
**TWIN FALLS**—Sunday school for all ages will be held at 9:45 a.m. at First Church of the Nazarene. Bible study and prayer will begin at 7:30 p.m.

**Episcopal**  
**TWIN FALLS**—Sunday school for all ages will be held at 9:45 a.m. at First Church of the Nazarene. Bible study and prayer will begin at 7:30 p.m.

**Episcopal**  
**TWIN FALLS**—Sunday school for all ages will be held at 9:45 a.m. at First Church of the Nazarene. Bible study and prayer will begin at 7:30 p.m.

### Greek Orthodox Church may fight for land in court

**ATHENS, Greece (AP)**—The Greek Orthodox Church said Friday it would sue the Greek government to court over a law that gives its huge landholdings to farm cooperatives and puts laymen in charge of church administration.

Leaders of the state church said they would not comply with the law and might seek help with the international body of Eastern Orthodox, which is under a similar law, which is under a similar law.

The socialist-dominated Parliament passed the bill early Friday after three weeks of acrimonious debate and student demonstrations. Opposition members walked out in protest, and the measure was approved by voice vote.

"In order to safeguard its liberty and religious freedom, the church will contest the law, and it may take legal action to farm cooperatives and puts laymen in charge of church administration. This is an issue that is not a matter of faith, but a matter of administrative affairs. This issue isn't over yet," a church spokesman said on condition his name not be used.

The Holy Synod, the 78-member body of bishops that runs church affairs, issued a statement saying the law put the church "under siege" from the state.

He said the bishops would meet on Tuesday to discuss whether to seek union with the Ecumenical Patriarchate in Istanbul, the spiritual governing body of Eastern Orthodox.

**Hazelton**—Sunday school for all ages will be held at 9:45 a.m. at Valley Presbyterian. Pastor Larry Vilario will speak on "Prayer and Forgiveness" at 11 a.m. Fellowship hour will be held at noon.

**Filer**—The Rev. Robert J. Smith of Twin Falls will speak on "Righting the Unrightable Wrong" at 11 a.m. Church location will be at 11 a.m. and for children under 12 years at 11:30 a.m.

**Missionary**  
**FILER**—Pastor Jim Sommer will speak on "Facing the Mission Call" at 11 a.m. The evening service will be held at 7:30 p.m. at the church.

**Kimberly**—Sunday school will begin at 9:45 a.m. Pastor Sherman will speak on "What Our Community Needs" at 6 p.m. on Saturday.

**Episcopal**  
**TWIN FALLS**—Sunday school for all ages will be held at 9:45 a.m. at First Church of the Nazarene. Bible study and prayer will begin at 7:30 p.m.

**Episcopal**  
**TWIN FALLS**—Sunday school for all ages will be held at 9:45 a.m. at First Church of the Nazarene. Bible study and prayer will begin at 7:30 p.m.

**Episcopal**  
**TWIN FALLS**—Sunday school for all ages will be held at 9:45 a.m. at First Church of the Nazarene. Bible study and prayer will begin at 7:30 p.m.

**United Methodist**  
**Buhl**—Sunday school for all adults and children will be held at 9:30 a.m. at the church. The sermon will be "Our Great High Priest" at 11 a.m.

**Kimberly**—Sunday school for all ages will begin at 9:45 a.m. The morning communion service will be held at 11 a.m. Adult Bible study will be held at 7:30 p.m.

**Episcopal**  
**TWIN FALLS**—Sunday school for all ages will be held at 9:45 a.m. at First Church of the Nazarene. Bible study and prayer will begin at 7:30 p.m.

**Episcopal**  
**TWIN FALLS**—Sunday school for all ages will be held at 9:45 a.m. at First Church of the Nazarene. Bible study and prayer will begin at 7:30 p.m.

**Episcopal**  
**TWIN FALLS**—Sunday school for all ages will be held at 9:45 a.m. at First Church of the Nazarene. Bible study and prayer will begin at 7:30 p.m.

**Episcopal**  
**TWIN FALLS**—Sunday school for all ages will be held at 9:45 a.m. at First Church of the Nazarene. Bible study and prayer will begin at 7:30 p.m.

**Episcopal**  
**TWIN FALLS**—Sunday school for all ages will be held at 9:45 a.m. at First Church of the Nazarene. Bible study and prayer will begin at 7:30 p.m.

## If You Don't Have Plans For Sunday Morning, Your Father Would Like To See You.

He's There For You  
TWIN FALLS REFORMED CHURCH

18:00 A.M. Sunday School 11:00 A.M. Morning Worship 7:30 P.M. Evening Worship  
Next to the Public Library

## Religion

# 2 Lutheran presidency prospects bow out

NEW YORK (AP) — Two prominent and widely backed prospective nominees for the presidency of a newly uniting Lutheran denomination on Thursday took themselves out of the race.

The Rev. Martin E. Marty of Chicago, and the Rev. H. George Anderson of Decorah, Iowa, both church historians and broadly respected among Lutherans, said they didn't want the top church post.

They were among the most generally known of a score of expected candidates, other than current presidents of the three denominations merging into the 5.3-million-member Evangelical Lutheran Church in America.

The new denomination holds its constituting convention April 30-May 3 in Columbus, Ohio.

Marty, 58, of the University of Chicago Divinity School, a prolific author, lecturer and frequent commentator on the American religious scene, said he was not available for the church presidency.

"I have no call to the office of bishop and thus cannot accept its proposals to nominate me," he said in a letter sent earlier by Bishop Will L. Berghel of St. Louis, president of the Association of Evangelical Lutheran Churches.

That 112,000-member body, in which Marty is an ordained minister, is the smallest of the three merging denominations, also including the 2.3-million-member Lutheran Church in America and 2.3-million-member American Lutheran Church.

Marty, also an associate editor of the Christian Century magazine, said his calling is "to work in a surprising juncture of worlds, named secular, pluralist, ecumenical."

In his typical whimsical style, he said he respected the office of bishop "too much to picture myself in it. The post requires experience and qualities I lack."

"I love the Lutheran church too much and now, after this reflection, love it more than ever, to risk seeing leadership of any part of it in hands like mine," he said.

Anderson, 55, president of Luther College in Decorah, a Lutheran liberal arts institution with a student body of 2,100, said in an interview he didn't want the top job.

SAVE NOW ON SELECTED GE MAJOR APPLIANCES!



# TRAINLOAD SALE!

HURRY—LIMITED TIME OFFER!

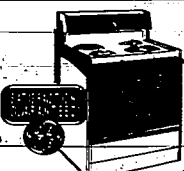
### 6-CYCLE POTSCRUBBER™ DISHWASHER



Model GSD1200G  
3-level washing action with Multi-Orbit™ wash arm. Sound insulated. Energy saver drying option. 10-year full warranty on PermaTuf™ tub and door liner (ask for details).

TRUCKLOAD SPECIAL \$528<sup>95</sup>

### SELF-CLEANING ELECTRIC RANGE



Model JSP24GJ  
Two 8", two 6" plug-in Calor® surface units. Porcelain enamel finish drip pans. Automatic oven warmer, clock, black glass oven door with towel bar handle.

TRUCKLOAD SPECIAL \$518<sup>95</sup>

### SPACE CENTER 27 REFRIGERATOR



Model TFC27J  
Refreshment center, built-in compartment door for instant access to inner shelf. Electronic monitor and diagnostic system. 26.7 cu. ft. capacity; 9.88 cu. ft. freezer. Automatic icemaker with dispenser for crushed ice, cubes or water.

WAS \$2399 NOW \$1998 SAVE \$411

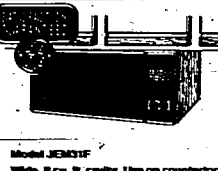
### FOOD SAVER REFRIGERATOR



Model TBX18BJ  
17.7 cu. ft. capacity; 5.01 cu. ft. freezer. Food Saver System helps keep food fresher longer with sealed high-humidity pans. Sealed snack rack. Energy Saver Switch. Equipped for optional ice maker.

TRUCKLOAD SPECIAL \$628<sup>95</sup>

### SPACE MAKER MICROWAVE OVEN



Model JEM31F  
White, 18 cu. ft. cavity. Use on countertop or hang from wall cabinet. World Preheating Delay. Touch to open door latch. Time Cook 1 & 2 lets you set two power levels within one time cook program. Auto Reset and Auto Defrost. 70 Power Levels.

TRUCKLOAD SPECIAL \$248<sup>95</sup>

### 3-CYCLE BUILT-IN DISHWASHER

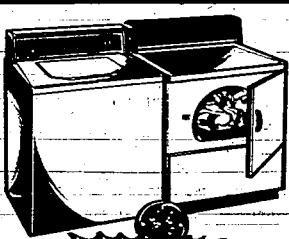


Model GSD500G  
Energy saver drying option; 2-level wash action; 3-way sound control. Full 10-year warranty on PermaTuf™ tub and door liner (ask for details).

TRUCKLOAD SPECIAL \$298<sup>95</sup>

### LARGE CAPACITY 2-SPEED WASHER

### TECHNOMATIC™ AUTOMATIC DRYER



Model WWA7050G  
3 cycles including permanent press. Three wash/three temperature combinations. 3 water level selectors. Soak cycle.

Model DDE5300G  
4 cycles including permanent press. 3 d-ryp selector. Steam. Durable porcelain enamel finish drum. Removable top-front knit filter.

WASHER \$438<sup>95</sup>

ALMOND FOR \$728<sup>95</sup>

DRYER \$318<sup>95</sup>



## MORE THAN A PRODUCT

Warranty Protection  
Prompt Available Service  
The GE Appliance Center, service  
Convenient Choice  
D. The GE of Help

GE. We bring good things to life.

SATISFACTION GUARANTEED

90-day refund or exchange option direct from General Electric on GE major appliances

FINANCING AVAILABLE

Blacker APPLIANCE and FURNITURE  
EVERYTHING FOR THE HOME

223 2nd Ave. East, Twin Falls 733-1804

**SAFEMWAY**  
Time for a  
**SATURDAY BBQ**

PRICES EFFECTIVE SATURDAY APRIL 4, 1987  
NOT AVAILABLE AT DISCOUNT LOCATIONS

**Regular Ground Beef**  
Stock Up Now At This Great Price For All Those Family Bar-be-ques To Come!

**8.99**  
lb.  
THREE POUNDS OR MORE

**Fresh Head Lettuce**  
Garden Fresh Crisp Tight Heads

**Hamburger Buns** each  
Plus, Wrigley's 8-ct. pgs.

**29¢**

**SATURDAY SPECIALS PLUS DOUBLE MANUFACTURER'S COUPONS**  
Seven Days A Week. See Store For Details.

**SAFEMWAY**













What it means for your ad to be "classified"

The Times-News



active readers

When people read your ad in classified, they're ready to buy and are actively searching the exact item to fill their needs - maybe it's in your ad.

Call Today 733-0626

168—Mercury & Lincoln  
BUDGET RENT A CAR  
1983 Mercury Marquis, 4 dr., AC, AT, PS, PB, tilt, cruise, AM/FM, 2726.  
Call Roger 353-3000 or 489-2828 after 9P.

169—Mercury & Lincoln  
1983 Mercury Marquis, 4 dr., AC, AT, PS, PB, tilt, cruise, AM/FM, 2726.  
Call Roger 353-3000 or 489-2828 after 9P.

170—Mercury & Lincoln  
1983 Mercury Marquis, 4 dr., AC, AT, PS, PB, tilt, cruise, AM/FM, 2726.  
Call Roger 353-3000 or 489-2828 after 9P.

171—Mercury & Lincoln  
1983 Mercury Marquis, 4 dr., AC, AT, PS, PB, tilt, cruise, AM/FM, 2726.  
Call Roger 353-3000 or 489-2828 after 9P.

172—Mercury & Lincoln  
1983 Mercury Marquis, 4 dr., AC, AT, PS, PB, tilt, cruise, AM/FM, 2726.  
Call Roger 353-3000 or 489-2828 after 9P.

173—Mercury & Lincoln  
1983 Mercury Marquis, 4 dr., AC, AT, PS, PB, tilt, cruise, AM/FM, 2726.  
Call Roger 353-3000 or 489-2828 after 9P.

174—Mercury & Lincoln  
1983 Mercury Marquis, 4 dr., AC, AT, PS, PB, tilt, cruise, AM/FM, 2726.  
Call Roger 353-3000 or 489-2828 after 9P.

175—Mercury & Lincoln  
1983 Mercury Marquis, 4 dr., AC, AT, PS, PB, tilt, cruise, AM/FM, 2726.  
Call Roger 353-3000 or 489-2828 after 9P.

176—Mercury & Lincoln  
1983 Mercury Marquis, 4 dr., AC, AT, PS, PB, tilt, cruise, AM/FM, 2726.  
Call Roger 353-3000 or 489-2828 after 9P.

177—Mercury & Lincoln  
1983 Mercury Marquis, 4 dr., AC, AT, PS, PB, tilt, cruise, AM/FM, 2726.  
Call Roger 353-3000 or 489-2828 after 9P.

178—Mercury & Lincoln  
1983 Mercury Marquis, 4 dr., AC, AT, PS, PB, tilt, cruise, AM/FM, 2726.  
Call Roger 353-3000 or 489-2828 after 9P.

179—Mercury & Lincoln  
1983 Mercury Marquis, 4 dr., AC, AT, PS, PB, tilt, cruise, AM/FM, 2726.  
Call Roger 353-3000 or 489-2828 after 9P.

180—Mercury & Lincoln  
1983 Mercury Marquis, 4 dr., AC, AT, PS, PB, tilt, cruise, AM/FM, 2726.  
Call Roger 353-3000 or 489-2828 after 9P.

181—Mercury & Lincoln  
1983 Mercury Marquis, 4 dr., AC, AT, PS, PB, tilt, cruise, AM/FM, 2726.  
Call Roger 353-3000 or 489-2828 after 9P.

182—Mercury & Lincoln  
1983 Mercury Marquis, 4 dr., AC, AT, PS, PB, tilt, cruise, AM/FM, 2726.  
Call Roger 353-3000 or 489-2828 after 9P.

183—Mercury & Lincoln  
1983 Mercury Marquis, 4 dr., AC, AT, PS, PB, tilt, cruise, AM/FM, 2726.  
Call Roger 353-3000 or 489-2828 after 9P.

184—Mercury & Lincoln  
1983 Mercury Marquis, 4 dr., AC, AT, PS, PB, tilt, cruise, AM/FM, 2726.  
Call Roger 353-3000 or 489-2828 after 9P.

185—Mercury & Lincoln  
1983 Mercury Marquis, 4 dr., AC, AT, PS, PB, tilt, cruise, AM/FM, 2726.  
Call Roger 353-3000 or 489-2828 after 9P.

186—Mercury & Lincoln  
1983 Mercury Marquis, 4 dr., AC, AT, PS, PB, tilt, cruise, AM/FM, 2726.  
Call Roger 353-3000 or 489-2828 after 9P.

187—Mercury & Lincoln  
1983 Mercury Marquis, 4 dr., AC, AT, PS, PB, tilt, cruise, AM/FM, 2726.  
Call Roger 353-3000 or 489-2828 after 9P.

188—Mercury & Lincoln  
1983 Mercury Marquis, 4 dr., AC, AT, PS, PB, tilt, cruise, AM/FM, 2726.  
Call Roger 353-3000 or 489-2828 after 9P.

189—Mercury & Lincoln  
1983 Mercury Marquis, 4 dr., AC, AT, PS, PB, tilt, cruise, AM/FM, 2726.  
Call Roger 353-3000 or 489-2828 after 9P.

190—Mercury & Lincoln  
1983 Mercury Marquis, 4 dr., AC, AT, PS, PB, tilt, cruise, AM/FM, 2726.  
Call Roger 353-3000 or 489-2828 after 9P.

191—Mercury & Lincoln  
1983 Mercury Marquis, 4 dr., AC, AT, PS, PB, tilt, cruise, AM/FM, 2726.  
Call Roger 353-3000 or 489-2828 after 9P.

192—Mercury & Lincoln  
1983 Mercury Marquis, 4 dr., AC, AT, PS, PB, tilt, cruise, AM/FM, 2726.  
Call Roger 353-3000 or 489-2828 after 9P.

193—Mercury & Lincoln  
1983 Mercury Marquis, 4 dr., AC, AT, PS, PB, tilt, cruise, AM/FM, 2726.  
Call Roger 353-3000 or 489-2828 after 9P.

194—Mercury & Lincoln  
1983 Mercury Marquis, 4 dr., AC, AT, PS, PB, tilt, cruise, AM/FM, 2726.  
Call Roger 353-3000 or 489-2828 after 9P.

195—Mercury & Lincoln  
1983 Mercury Marquis, 4 dr., AC, AT, PS, PB, tilt, cruise, AM/FM, 2726.  
Call Roger 353-3000 or 489-2828 after 9P.

196—Mercury & Lincoln  
1983 Mercury Marquis, 4 dr., AC, AT, PS, PB, tilt, cruise, AM/FM, 2726.  
Call Roger 353-3000 or 489-2828 after 9P.

197—Mercury & Lincoln  
1983 Mercury Marquis, 4 dr., AC, AT, PS, PB, tilt, cruise, AM/FM, 2726.  
Call Roger 353-3000 or 489-2828 after 9P.

198—Mercury & Lincoln  
1983 Mercury Marquis, 4 dr., AC, AT, PS, PB, tilt, cruise, AM/FM, 2726.  
Call Roger 353-3000 or 489-2828 after 9P.

199—Mercury & Lincoln  
1983 Mercury Marquis, 4 dr., AC, AT, PS, PB, tilt, cruise, AM/FM, 2726.  
Call Roger 353-3000 or 489-2828 after 9P.

200—Mercury & Lincoln  
1983 Mercury Marquis, 4 dr., AC, AT, PS, PB, tilt, cruise, AM/FM, 2726.  
Call Roger 353-3000 or 489-2828 after 9P.

Get an angle on the camera equipment you always wanted. Read classified. Call 733-0626.

175—Auto Dealers  
176—Auto Dealers  
177—Auto Dealers  
178—Auto Dealers  
179—Auto Dealers

Why hire those summer workers you'll need with an employment ad in classified. Call today, 733-0626.

Rooms, apartments, homes—classified can satisfy your needs. Call 733-0626.

Hobbyists find the equipment and supplies they need in classified. Call 733-0626.

## NO HOOKS, LINES OR SINKERS

**You should be able to shop for a New or Used Car with confidence. Now you can. It's Simple. Treat customers right and they come back. At Canyon Motors Subaru, We Do!**

<p><b>1987 SUBARU GL STATION WAGON</b> #7-047. Liberty White, 5 speed, front wheel drive, air conditioning, cassette deck, undercoat, GlowKote, splash guards, floor mats.</p> <p><b>1987 SUBARU GL 3 DOOR</b> #7-024. Moon Silver Metallic, automatic transmission, undercoat, GlowKote, mats, power steering, front wheel drive, premium cassette.</p>	<p><b>1987 SUBARU GL 4 DOOR 4X4</b> #7-041. Liberty White, 5 speed, front wheel drive, air conditioning, mats, power steering, transmission.</p> <p><b>1987 SUBARU GL 3 DOOR</b> #7-040. Liberty White, automatic transmission, power steering, 5 windows, mats, wheel covers, sport stripe, undercoat, cruise.</p>
<p><b>1987 SUBARU GL 4 DOOR 4X4</b> #7-041. Liberty White, 5 speed, front wheel drive, air conditioning, mats, power steering, transmission.</p> <p><b>1987 SUBARU GL 3 DOOR</b> #7-024. Moon Silver Metallic, automatic transmission, undercoat, GlowKote, mats, power steering, front wheel drive, premium cassette.</p>	<p><b>1987 SUBARU GL 4 DOOR 4X4</b> #7-041. Liberty White, 5 speed, front wheel drive, air conditioning, mats, power steering, transmission.</p> <p><b>1987 SUBARU GL 3 DOOR</b> #7-024. Moon Silver Metallic, automatic transmission, undercoat, GlowKote, mats, power steering, front wheel drive, premium cassette.</p>

**\* ASK ABOUT OUR SENIOR CITIZEN DISCOUNT.**

## CANYON MOTORS SUBARU

794 Falls Avenue 734-8860

## SPRING SPECIALS

<p><b>1983 FORD ESCORT</b> #1455. Automatic transmission, AM/FM cassette, front wheel drive and more.</p>	<p><b>\$2995.00</b> NOW</p>
<p><b>1985 PLYMOUTH HORIZON 4 DOOR</b> #1456. 4 speed, power steering and brakes, AM/FM cassette, front wheel drive.</p>	<p><b>\$3895.00</b> NOW</p>
<p><b>1984 CHEVROLET 1/2 TON 4x4 PICKUP</b> #7-1163. Automatic, Silverado, air conditioning, tilt, cruise, Loaded.</p>	<p><b>\$8995.00</b> NOW</p>
<p><b>1974 JEEP CHEROKEE WAGON 4x4</b> #7-1131. Automatic, power steering and brakes, AM radio.</p>	<p><b>\$1995.00</b> NOW</p>
<p><b>1982 CHEVROLET 1/2 TON PICKUP</b> #7-1156. V-8, automatic, power steering and brakes, AM radio.</p>	<p><b>\$2495.00</b> NOW</p>
<p><b>1985 FORD LTD 4 DOOR</b> #1452. Automatic, air conditioning, AM/FM cassette and more.</p>	<p><b>\$5695.00</b> NOW</p>
<p><b>1985 BUICK SKYLARK 4 DOOR</b> #1453. V-6, automatic, AM/FM cassette power door locks, front wheel drive.</p>	<p><b>\$6795.00</b> NOW</p>
<p><b>1984 TOYOTA 4x4 PICKUP</b> #7-1137. Manual 5 speed, AM/FM stereo and more.</p>	<p><b>\$5695.00</b> NOW</p>
<p><b>1973 CHEVROLET 1 TON</b> #7-1131. 3/4 TON CATTLE TRUCK, 4 speed, V-8, with cattle bars.</p>	<p><b>\$2395.00</b> NOW</p>

OPEN 'TIL 9 P.M. MON. THROUGH FRI. FOR YOUR SHOPPING CONVENIENCE.

**CON PAULOS CHEVROLET PONTIAC & GMC TRUCKS**

324-3300 901 S. Lincoln Jerome 734-6565

## 3 DAYS ONLY PUBLIC NOTICE THURS.-FRI.-SAT. Wholesale \* To Public First Time Ever.

**ALL CARS PRICED TO SELL AT LOWEST POSSIBLE PRICE.**

<p><b>1974 BUICK ELECTRA</b> #3228. Fair Market Value \$1895 <b>WHOLESALE PRICE \$200</b></p>	<p><b>1978 FORD FIESTA</b> #3222. Fair Market Value \$1995 <b>WHOLESALE PRICE \$800</b></p>	<p><b>1978 MERCURY MONARCH</b> #3102. Fair Market Value \$2495 <b>WHOLESALE PRICE \$1250</b></p>	<p><b>1981 FORD ESCORT</b> #3176. WAGON. Fair Market Value \$3495 <b>WHOLESALE PRICE \$2200</b></p>
<p><b>1961 CHEVROLET PICKUP</b> #4392. Fair Market Value \$895 <b>WHOLESALE PRICE \$300</b></p>	<p><b>1976 MAZDA RX4</b> #3240. Fair Market Value \$1995 <b>WHOLESALE PRICE \$800</b></p>	<p><b>1981 FORD MUSTANG</b> #3880. Fair Market Value \$2995 <b>WHOLESALE PRICE \$1500</b></p>	<p><b>1981 DODGE OMNI</b> #3153. Fair Market Value \$3495 <b>WHOLESALE PRICE \$2250</b></p>
<p><b>1971 LINCOLN</b> #3267. CONTINENTAL. Fair Market Value \$1995 <b>WHOLESALE PRICE \$300</b></p>	<p><b>1977 PONTIAC PHOENIX</b> #3273. Fair Market Value \$1995 <b>WHOLESALE PRICE \$800</b></p>	<p><b>1980 HONDA ACCORD</b> #3157. Fair Market Value \$2695 <b>WHOLESALE PRICE \$1500</b></p>	<p><b>1981 PONTIAC LaMANS</b> #3121. WAGON. Fair Market Value \$3995 <b>WHOLESALE PRICE \$2500</b></p>
<p><b>1974 PONTIAC CATALINA</b> #3277. Fair Market Value \$995 <b>WHOLESALE PRICE \$300</b></p>	<p><b>1970 FORD F100</b> #4383. Fair Market Value \$1995 <b>WHOLESALE PRICE \$850</b></p>	<p><b>1968 MERCURY COUGAR</b> #3201. Fair Market Value \$2895 <b>WHOLESALE PRICE \$1500</b></p>	<p><b>1984 MERCURY TOPAZ</b> #3160. Fair Market Value \$3995 <b>WHOLESALE PRICE \$2800</b></p>
<p><b>1980 FIAT STRADA</b> #3276. Fair Market Value \$995 <b>WHOLESALE PRICE \$350</b></p>	<p><b>1974 FORD LTD</b> #3263. Fair Market Value \$1895 <b>WHOLESALE PRICE \$850</b></p>	<p><b>1976 JEEP CJ7</b> #4183. Fair Market Value \$2995 <b>WHOLESALE PRICE \$1750</b></p>	<p><b>1979 LINCOLN MARK V</b> #3156. Fair Market Value \$3995 <b>WHOLESALE PRICE \$2850</b></p>
<p><b>1979 V.W. RABBIT</b> #3282. Fair Market Value \$1495 <b>WHOLESALE PRICE \$500</b></p>	<p><b>1980 FORD FAIRMONT</b> #3283. WAGON. Fair Market Value \$2795 <b>WHOLESALE PRICE \$1000</b></p>	<p><b>1982 MERCURY LYNX</b> #3181. Fair Market Value \$2995 <b>WHOLESALE PRICE \$1950</b></p>	<p><b>1982 PONTIAC PHOENIX</b> #3166. Fair Market Value \$3995 <b>WHOLESALE PRICE \$2950</b></p>
<p><b>1977 MONTE-CARLO</b> #3203. Fair Market Value \$1995 <b>WHOLESALE PRICE \$650</b></p>	<p><b>1977 MERCURY COUGAR</b> #3205. Fair Market Value \$1995 <b>WHOLESALE PRICE \$1000</b></p>	<p><b>1967 FORD F350 DUALY</b> #4371. Fair Market Value \$2995 <b>WHOLESALE PRICE \$2000</b></p>	<p><b>1980 INTERN'L SCOUT</b> #4345. Fair Market Value \$4995 <b>WHOLESALE PRICE \$3200</b></p>
<p><b>1972 CHEVROLET C-10</b> #4360. PICKUP. Fair Market Value \$1695 <b>WHOLESALE PRICE \$800</b></p>	<p><b>1977 FORD F250 4X4</b> #4375. Fair Market Value \$2795 <b>WHOLESALE PRICE \$1200</b></p>	<p><b>1976 DODGE 3/4 4X4</b> #4354. Fair Market Value \$2995 <b>WHOLESALE PRICE \$2000</b></p>	<p><b>1963 DODGE CONV. BUS</b> #4303. Fair Market Value \$4995 <b>WHOLESALE PRICE \$3350</b></p>

\*All Sold As Is. No Dealer Guarantee of Fitness.

Buckle Up, Idaho!

Make It Your Law For Life.

**ROY RAYMOND**

CUSTOMER SATISFACTION IS OUR DRIVING CONCERN

**733-5110**

1243 Blue Lakes Blvd. No

**Automotive 175-175**

**LAST OF THE BRAND NEW 1986 CARRYOVERS**  
ALL WITH CHOICE OF SPECIAL FINANCING

<p><b>1986 CHEVROLET NOVA</b> #16023. 4 door sedan, L4 Toyota high tech engine, 5 speed manual transmission, P155-90 radial tires, radio, beautiful metallic red finish, charcoal-rolling bucket seats, ABS 15000.</p> <p><b>NOW WITH FACTORY REBATE &amp; SPECIAL INCENTIVE.....</b></p> <p><b>\$6995</b></p>	<p><b>NEW 1986 CHEVROLET CELEBRITY EUROSPORT SEDAN</b></p> <p><b>NOW WITH FACTORY REBATE &amp; SPECIAL INCENTIVE.....</b></p> <p><b>\$10,995</b></p>
<p><b>1986 BUICK SKYLARK LIMITED SEDAN</b> #4600. Chrome guards, electronic pulse windshield wipers, electric rear window defogger, air conditioning, cruise, automatic transmission, 110 cassette, 600 watt AM, FM, stereo radio cassette tape player, WAS \$13,016</p> <p><b>NOW WITH FACTORY REBATE &amp; SPECIAL INCENTIVE.....</b></p> <p><b>SAVE TODAY</b></p> <p><b>\$10,688</b></p>	<p><b>1986 OLDSMOBILE CUTLASS CIERA SPORT COUPE</b> #30016. Buckling offset seat belts, steel pipes, custom alloy wheels, high back aluminum wheels, AM/FM stereo cassette, air conditioning, pulse wiper system, 2.5 inch engine, 5 speed transmission, beautiful mesh interior, WAS \$12,100.</p> <p><b>NOW WITH FACTORY REBATE &amp; SPECIAL INCENTIVE.....</b></p> <p><b>\$9916</b></p>

GOOD STOCK OF MOST ALL CHEVROLET MODELS FROM THE LUXURY CAPRICE TO THE LOW PRICED SPRINTS.

STOP & SEE OUR FINE LINE OF S-10 & REGULAR SIZED PICKUPS.

**OPEN EVENINGS**

**LEO RICE MOTOR CO., INC.**

CHEVROLET · PONTIAC · OLDSMOBILE · BUICK

934-4439 GOODING 934-4436

**THEISEN MOTORS**  
**USED CAR SPRING TIME SHOPPING SPREE!**

<p><b>1968 DODGE DART</b> Excellent transportation. <b>CAN YOU BELIEVE ONLY</b></p> <p><b>\$499</b></p>	<p><b>1980 GRAND MARQUIS</b> Tu-tone gold, air conditioning WAS \$3295</p> <p><b>\$3388</b></p>	<p><b>1984 MERCURY LYNX 5 DOOR</b> Economical diesel engine, front wheel drive. WAS \$4495</p> <p><b>\$3388</b></p>	<p><b>1981 BUICK SKYLARK</b> Extra nice, front wheel drive, mid size car. WAS \$2495</p> <p><b>\$1788</b></p>
<p><b>1973 PONTIAC 4 DOOR</b> Nice older car, excellent transportation. WAS \$995</p> <p><b>\$588</b></p>	<p><b>1980 BUICK LeSABRE 4 DOOR</b> Silver, wire wheel covers, all the power options. WAS \$4995.....</p> <p><b>\$3988</b></p>	<p><b>1986 HONDA PRELUDE</b> SPORT CAR. Lower return, just like new. WAS \$12,900</p> <p><b>\$11,588</b></p>	<p><b>1976 GRAND MARQUIS</b> Only 64,000 original miles, fully equipped. <b>NOW</b></p> <p><b>\$1688</b></p>
<p><b>1975 MERCURY MARQUIS</b> Extra nice, fully equipped. WAS \$1395</p> <p><b>\$788</b></p>	<p><b>1984 NISSAN SENTRA WAGON</b> Local 1 owner, low miles, fully equipped.</p> <p><b>\$4288</b></p>	<p><b>1983 MERCURY CAPRI</b> Sporty, power steering, floor mounted transmission. WAS \$5495</p> <p><b>\$4577</b></p>	<p><b>1978 GRAND MARQUIS</b> Colony Park Wagon, 9 passenger comfort, fully equipped. WAS \$2695</p> <p><b>\$1488</b></p>
<p><b>1977 FORD T-BIRD</b> PRICED TO SELL</p> <p><b>\$800</b></p>	<p><b>1980 LINCOLN MARK VI</b> Looks like new inside and out, on board computer. WAS \$7995</p> <p><b>\$4995</b></p>	<p><b>1984 VW JETTA</b> Local 1 owner, low miles, like new. WAS \$6995</p> <p><b>\$5388</b></p>	<p><b>1982 PLYMOUTH RELIANT</b> WAGON. Good mid size car, front wheel drive. WAS \$3995</p> <p><b>\$2588</b></p>
<p><b>1975 FORD LTD 4 DOOR</b> Air conditioning, power steering. WAS \$1395</p> <p><b>\$988</b></p>	<p><b>1983 GRAND MARQUIS LS</b> Local 1 owner, fully equipped. NADA OVER \$9000.....</p> <p><b>\$5999</b></p>	<p><b>1984 HONDA ACCORD 4 DOOR</b> #1-4208. Light blue, front wheel drive. WAS \$7495.....</p> <p><b>\$6288</b></p>	<p><b>1981 FORD GRANADA</b> Tu-tone, fully equipped. WAS \$3995</p> <p><b>\$2299</b></p>
<p><b>1978 FORD FIESTA</b> Nice car, front wheel drive. WAS \$1498</p> <p><b>\$699</b></p>	<p><b>1985 VW QUANTUM WAGON</b> VW's best car, power seats and windows. WAS \$7995</p> <p><b>\$6299</b></p>	<p><b>1983 GRAND MARQUIS</b> #1A-4208. White, AM/FM stereo cassette, power seats and windows. WAS \$4995</p> <p><b>\$5299</b></p>	<p><b>1976 OLDS OMEGA</b> Local 1 owner, 56,000 original miles. WAS \$2995</p> <p><b>\$2588</b></p>
<p><b>1978 GRAND MARQUIS</b> V-8 engine, air conditioning, cruise control. WAS \$1995</p> <p><b>\$1488</b></p>	<p><b>1986 HONDA CIVIC 4 DOOR</b> Local 1 owner, bronze, rear window defogger. WAS \$8995</p> <p><b>\$7499</b></p>	<p><b>1984 HONDA ACCORD</b> Local 1 owner, grey metallic, front wheel drive. WAS \$7995</p> <p><b>\$7388</b></p>	<p><b>1979 MERCURY COUGAR XR7</b> One of a kind, power moon roof. WAS \$3495</p> <p><b>\$2888</b></p>

**SUPER LOW INTEREST REBATES BUYS**

2.9% — 24 month loans  
6.9% — 36 month loans  
8.9% — 48 month loans  
9.9% — 60 month loans

**PLUS \$500.00 REBATES**  
ON ALL 1986 & 1987  
GTA, ALLIANCE & ENCORE  
IN STOCK!

**EXAMPLES**

**One little hatchback with plenty of room for luxury.**

STK. #6F-3




**Encore S Hatchback**

- Front wheel drive
- 5 speed overdrive transmission
- Four-wheel independent suspension
- Power windows, door locks, rear door brakes
- Electronic fuel injection
- High capacity oil and fuel capacity
- AM/FM cassette
- Cleanport paint

**TOP OF THE LINE.**

STK. #6F-16



**Alliance 4-Door L**

- Four-wheel independent suspension
- Front and rear coil-over bars
- Rear window defogger
- Power windows, door locks, rear door brakes
- Electronic fuel injection
- Luxury carpet and fabric upholstery
- Cleanport paint
- AM/FM cassette

**40% OFF! 33% OFF! DEMO SAVE!**  
Use 40% off. for comparison. Your results may vary.

**CHECK OUT THE SAVINGS ON THIS BEAUTIFUL "ELECTRIC BLUE" 1986 ENCORE DEMONSTRATOR.**

LIST PRICE	\$8505
SALE PRICE	\$6988
Less Factory Rebate	\$500
Less Will's Motor Rebate	\$6488
NET PRICE TO YOU!	\$3988

**THE BOTTOM LINE:**

**AFTER REBATES \$7406 ARE APPLIED..**

**SAVE BIG ON THIS NEW 1986 ALLIANCE L 4-DOOR SEDAN**

LIST PRICE	\$9406
SALE PRICE	\$8406
Less Factory Rebate	\$500
Less Will's Motor Rebate	\$7906
NET PRICE TO YOU!	\$7406

**SAVE OVER \$2500**

**PLUS TAKE ADVANTAGE OF OUR LOW INTEREST RATES.**

**AND PAY ONLY \$134.42 WITH NO BALLOON**

Using total of rebates (\$1000) as your total down payment against sale price of \$6988 + tax, 60 payment of \$134.42 @ 9.9% APR, O.A.C.

**SAVE \$2000!**

**PLUS TAKE ADVANTAGE OF OUR LOW INTEREST RATES.**

**AND PAY ONLY \$165.00 WITH NO BALLOON**

Using Total of Rebates (\$1000) as your total down payment against sale price of \$9406 + tax, 60 payment of \$165.00 @ 9.9% APR, O.A.C.

THESE ARE ONLY 2 EXAMPLES — SAVE BIG ON ALL GTA, ALLIANCE & ENCORES IN STOCK • PLUS GET REBATES AND LOW INTEREST!

ALL CARS SUBJECT TO PRIOR SALE!

**WILLS MOTOR COMPANY**

TOYOTA AMC/FI Jeep Renault

**MAGIC VALLEY'S LOW PRICE LEADER**  
SHOSHONE STREET, TWIN FALLS, IDAHO  
**733-BUY-1**

**YES! WE HAVE PICKUPS!**

<p><b>1982 FORD LUXURY TRAVEL VAN</b> Just like new, every possible option.</p> <p><b>SAVE HUNDREDS</b></p> <p><b>\$5500</b></p>	<p><b>1987 FORD 1/2 TON PICKUP</b> 4 speed, V-8 engine.</p> <p><b>\$500</b></p>	<p><b>1979 FORD F-150</b> 4 wheel drive, automatic transmission, power steering and brakes. WAS \$3995</p> <p><b>\$3188</b></p>
<p><b>1982 FORD XL F-250 PICKUP</b> 3 speed overdrive transmission, AM/FM cassette, towing away mirrors. WAS \$4995</p> <p><b>\$5988</b></p>	<p><b>1982 FORD F-100 XL 1/2 TON PICKUP</b> 110, steering, cruise control, air conditioning. WAS \$4995</p> <p><b>\$5988</b></p>	<p><b>1985 CHEVY S-10 KING CAB PICKUP</b> 424, air conditioning, only 22,000 miles, deluxe camper shell. WAS \$10,995</p> <p><b>\$9588</b></p>

Swett-Hauson's **THEISEN MOTORS**

For Over 33 Years The Easiest Place In The World To Buy A Car

701 Main Ave. E. Twin Falls 733-7700

# NO TV SPECIALS

JUST GOOD HONEST REAL SAVINGS FROM A DEALER YOU CAN TRUST!

## 1987 MERCURY LYNX



#H127

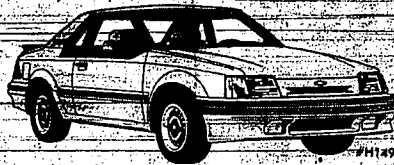
- Front wheel drive
- Reclining cloth bucket seats
- 4 cylinder EFI engine
- Automatic transmission
- Radial tires
- Power steering
- Power brakes
- Color keyed carpet
- Undercoated
- Excellent fuel economy

RETAIL PRICE \$8440  
 CASH BACK FROM FORD \$300  
 GOODE DISCOUNT \$441  
**YOUR PRICE \$7699**

**\$163<sup>96</sup>** per month

Sale price \$7699, use your \$300 cash for down payment. Financed amt. \$7699, 60 mo. 9.9% APR, interest \$2134.00, sales tax extra.

## 1987 FORD EXP



#H149

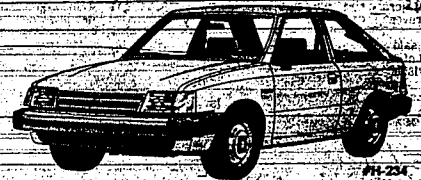
- Front wheel drive
- Power steering
- Tilt wheel
- AM/FM cassette
- Radial tires

RETAIL PRICE \$9226  
 CASH BACK FROM FORD \$600  
 GOODE DISCOUNT \$682  
**YOUR PRICE \$7944**

**\$169<sup>98</sup>** per month

Sale price \$7944, use your \$600 cash for down payment. Financed amt. \$7944, 60 mo. 9.9% APR, interest \$2212.00, sales tax extra.

## 1987 FORD ESCORT



#H224

- Front wheel drive
- Clair reclining seats
- 4 cylinder EFI engine
- 5 speed transmission
- AM/FM cassette
- Radial tires
- Power disc brakes
- Undercoated
- Stabilizer bar
- Much Much More

RETAIL PRICE \$7684  
 CASH BACK FROM FORD \$600  
 GOODE DISCOUNT \$184  
**YOUR PRICE \$6900**

**\$146<sup>95</sup>** per month

Sale price \$6900, use your \$600 cash for down payment. Financed amt. \$6900, 60 mo. 9.9% APR, interest \$1913.00, sales tax extra.

## 1987 FORD RANGER



#H231

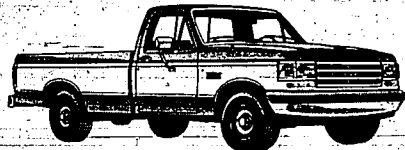
- 4 cylinder engine
- 5 speed overdrive transmission
- Custom cab trim
- AM radio
- Radial tires
- Rear hitch bumper
- Halogen headlamps
- Undercoated
- Argent grill

RETAIL PRICE \$8932  
 LOW INTEREST RATE 3.9% APR  
 GOODE DISCOUNT \$977  
**YOUR PRICE \$7955**

**\$152<sup>91</sup>** per month

Sale price \$7955, use your \$600 cash for down payment. Financed amt. \$7955, 60 mo. 9.9% APR, interest \$1990.00, sales tax extra.

## 1987 FORD 4X4 PICKUP



#H131

- Four wheel drive
- Western mirrors
- Tinted glass
- Convenience group
- Dual tanks
- Chrome grill
- Light group
- AM/FM stereo
- Tilt wheel
- Speed control
- Fuel injected 6 cylinder
- 4 speed transmission
- Handling package
- Sport wheel covers

RETAIL PRICE \$16,251  
 CASH BACK FROM FORD \$600  
 GOODE DISCOUNT \$2400  
**YOUR PRICE \$13,251**

OR LOW 3.9% A.P.R.

## 1987 BRONCO II



JACKS PERSONAL DEMO

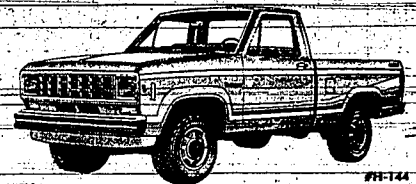
- Port injector V-6
- Interval wipers
- AM/FM cassette
- Privacy glass
- Tachometer
- Light group
- Radial tires
- Luggage rack
- Ski rack
- Sun Valley

RETAIL PRICE \$15,500  
 CASH BACK FROM FORD \$600  
 GOODE DISCOUNT \$1901  
**YOUR PRICE \$12,999**

OR LOW 3.9% A.P.R.

Special Edition

## 1987 FORD 4x4



#H124

- Ranger four wheel drive
- Turbo diesel engine
- 5 speed overdrive transmission
- Western mirrors
- Handling package
- Interval wipers
- Radial tires
- Clear coat paint
- Undercoated
- Economy Plus!

RETAIL PRICE \$14,463  
 CASH BACK FROM FORD \$600  
 GOODE DISCOUNT \$2000  
**YOUR PRICE \$11,863**

OR LOW 3.9% A.P.R.

## 1987 FORD 1/2 TON 4x4



#H153

- Four wheel drive
- 302 fuel injected V-8
- Automatic overdrive transmission
- XL
- Convenience group
- Dual tanks
- Air conditioning
- Cruise control
- Tilt wheel
- Power windows
- Power locks
- Loaded with all the goodies

RETAIL PRICE \$19,299  
 CASH BACK FROM FORD \$600  
 GOODE DISCOUNT \$2300  
**YOUR PRICE \$16,399**

OR LOW 3.9% A.P.R.

## "NO RESIDUALS"

If you choose the low finance rate you own it at the end of your contract.

# 50 TRUCKS IN STOCK



**We make believers.**  
 Make us prove it to you!

CALL 436-5611

# GOODE MOTOR

4th & F St.  
 DOWNTOWN RUPERT

FOR 50 YEARS YOUR FORD & MERCURY DEALER

# WSU coach defects to Reno

RENO, Nev. (AP) — Len Stevens, Washington State University basketball coach the past four years, was asked Friday to be the new University of Nevada-Reno basketball coach.

Stevens, 45, replaces Sonny Allen, who resigned March 10.

Stevens, a Milwaukee Bucks assistant coach, had been a top prospect for the Reno position.

However, Nevada-Reno Athletic Director Chris Hall last week that Majerus had family matters that prevented him from taking the job.

Ault said Stevens was chosen from a field of 32 collegiate head coaches, 23 Division I assistant coaches and three professional basketball coaches to become the 11th coach at

the Big Sky Conference school.

"The main reason I accepted the job here was the ability of Nevada-Reno to compete consistently at the top half of their league," Stevens said. "Nevada-Reno is at the top of their league while WSU has been in the middle of their league."

Allen's squad was 15-15 last season and made it to the finals of the Big Sky Tournament before losing to champion Idaho State 92-81.

Allen was 114-89 in his seven seasons at UNR and led the team to Big Sky tournament championships and NCAA berths in 1984 and 1985.

The squad slipped to 13-15 in 1986.

The Wolf Pack's best seasons under Allen were 19-9 in 1982 and 21-10 in 1983.

In Pullman, Wash., Washington

State Athletic Director Dick Young said the university immediately will take action to find Stevens' replacement.

"We will formulate our plans over the weekend," Young said. "We will address aspects as we have done in other situations. Our No. 1 goal is to expedite a smooth transition."

Young said the university has no specific date for announcing a new coach. The university plans to be thorough in its search, he said.

Stevens was at Washington State for six years, and was head coach the past four years.

After two seasons as a member of George Raveling's staff at Washington State, Stevens was named head coach when Raveling transferred to Iowa.

Stevens compiled a 542 record at Washington State, including a 10-18 basketball mark and a ninth-place finish in the Pacific-10 Conference this year.

Stevens' resignation from Washington State was discussed at a March 13 meeting between Young and other university officials, but Young said he wanted to honor the final year on Stevens' five-year contract.

Several petitions calling for Young's firing are being circulated throughout Washington state among university-alum and Cougar Club members.

A letter accompanying the petitions notes "displeasure with the recent administrative decisions made in regards to the welfare of the

Washington State University basketball." Young said Friday he wishes Stevens well.

"If this is the job Len wants, then I am very happy for him," Young said. "We wish him the very best. I predict he will do a fine job at Reno."

Washington State has not committed two basketball scholarships for next season.

Young said Stevens' assistants, Prescott Smith, Kelvin Sampson, Mike Wurm and Tim Kelly, would carry on the school's recruiting duties.

It was unclear whether any of the assistants would follow Stevens to Nevada-Reno.



LEN STEVENS  
From Pac-10 to Big Sky

# Sports Saturday

Saturday, April 4, 1987 • Times-News, Twin Falls, Idaho

- NBA roundup D2
- Exhibition baseball D2
- Business-markets D3

# D

## Meridian, Nampa dominate Round 1 at Mini-Cassia

By The Times-News

**Mini-Cassia Easter Tournament**

Twin Falls 9, Minico 2  
Meridian 11, Minico 1  
Nampa 13, Burley 0  
Meridian 8, Twin Falls 9  
Burley 10, Madison 9

Meridian's and Nampa's high school baseball teams took all the fun out of the first day of the ninth annual Mini-Cassia Easter Tournament Friday.

In Rupert, Meridian right-hander Ron Osborn pitched a three-hitter at Minico as the Warriors run-ruled the Spartans 11-1. Then Osborn's teammate Mike Hampton tossed a two-hitter to a student over Twin Falls, striking out 10 Bruins in the process.

In Burley, Nampa swept past Burley 12-0 on a two-hitter by right-hander Jay Jewell, then blanked Madison 11-0 on four hits.

That put the Bulldogs into one semifinal game this afternoon at 1:30 at Burley High School against the winner of the 10 a.m. game between Twin Falls and Madison.

The winners of the two semifinal games will decide the tournament championship at 5:30 p.m. in Burley.

In other games in Friday's first round, Twin Falls whipped Minico 9-3 and Burley outlasted Madison 10-9.

In Rupert, Osborn and Hampton between them let just four Minico and Twin Falls baserunners as far as three bases.

"We played good enough to win," said Meridian Coach Mo Brooks, whose ballclub ran its record to 12-0 with the sweep. "Hampton has been pitching good this season, but Osborn was a question mark because he just got through with

baseball and hasn't thrown that much."

Osborn gave up a run to Minico in the first inning when he walked Kevin Condie with two outs and James Frost followed with a single. Kevin Miller slapped a ground ball for second base to drive in Condie.

After Meridian scored an unearned run in the top of the second, Minico's Scott Knopp led off the bottom of the inning by reaching base on an error. With two outs, Kent Shaw hammered a double into right field, but Meridian's second baseman Brad Wickham cut down Knopp at the plate with the relay throw to get Osborn out of the inning.

From that point, it was clear sailing for the senior as he retired nine of the next 10 batters he faced. The Warriors in turn scored two more runs in the third on Lonnie Rebers' lowering two-run homer over the left field fence, then made it 4-1 in the fourth. In the fifth, Meridian scored seven more runs on five hits.

Against Twin Falls, the Warriors scored a run without a hit in the first, then made it 5-0 in the second with four unearned runs. That was



Times-News photo by ANDY ARENG

Meridian right-hander Mike Hampton gets set to uncork a pitch vs. Twin Falls Friday.

more than enough offense for Osborn who had runners on base in every inning but the last and got himself out of trouble every time with K's.

Arroyo Moorhouse paced the Warriors Friday with four hits in five trips to the plate.

"We just got beat, by a good

team," said Bruin Coach Bill Ingram, who started three freshmen in the game. "I thought the kids played pretty well and I thought Bruin left-hander Mike Buster threw pretty well."

Ingram had much more cause to be pleased with the tournament-opening victory over Minico,

significant because of its magnitude and because of the fact that the two ballclubs are Region III rivals.

"It's always nice to beat Minico, but we realize we don't see their No. 1 and No. 2 (pitchers)," he said. "We hit the ball pretty well against them. We played pretty good

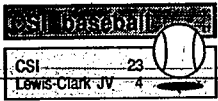
defense and got a real good game from (junior right-hander) John Hayes. He had the curveball working and he was executing it over the plate."

Hayes, who came on in relief of Kelly Chatterton two weeks ago to pick up a victory over Pocatello, See MINI-CASSIA on Page D2.

## CSI moves within a win of tourney title

## In brief . . .

By MICHAEL VANAUDELEN  
Times-News writer



After two days of action CSI's 30, number one in the state, is in a position to win the tourney championship by defeating the Eagles in this afternoon.

The Eagles will take a 3-0 tournament record into today's final round, one game better than the College of Eastern Utah, TVCC and Utah Valley.

A CSI loss today, however, would throw the tournament into a three- or four-way tie, with the champion to be determined on the basis of head-to-head records with the other teams with 3-1 tourney records.

Action continues today in the Frontier Field portion of the two-site, three-day tournament with Ricks College facing CSU at 11 a.m. and taking on Utah Tech at approximately 2 p.m. Two games will also be played on TVCC's Ontario, Ore., diamond today.

plisher Mike House and both benches stood up.

"I wish we had beaten them 43-4," said CSI Coach Jim Walker. "They tried to spear our center fielder and he hit three of our guys. That's the way they run their program. But I don't condone what CSI left fielder Errol Shirer did."

Shirer and LCSC reliever Greg Fairfield came to blows with the bases loaded in the bottom of the fifth over an errant Fairfield pitch sent Shirer at the plate. Both benches cleared, and both Shirer and Fairfield were ejected from the game.

By that time, CSI had things pretty much under control.

Shawn Whalen began the inning with a single, followed by Hanks' 4-for-5 at the plate Friday — who walked. Jeff Moe followed with a single to load the bases.

After Ryan Brown struck out, Dave McQuivey walked for another CSI run. With the bases still loaded, Bivens came up and hit his third home run in two days to give CSI an 8-1 advantage.

But the inning was far from over.

After an out, Satterfield was hit by a pitch and Eric Kophs walked. Whalen stroked a single to right and Hanks did the same to drive in another run. By the time the inning was over, the Eagles had a 11-1 lead.

After the Shirer-patting and exchange, CSI exploded for six runs in the 16-run fifth inning, including the second Hanks homer.

"Hanks, a freshman who has hit 10 home runs in 26 games this season, is having a great year," said Walker.

Despite Hanks' heroics, it was four consecutive walks that kept things CSI's way. In addition, Hanks' second homer was sandwiched by a Whalen double and a Moe triple.

LCSC JV#25, E. Oregon 11  
CSI 23, LCSC 4  
CEU, E. Oregon 5

**Minico harriers second, third**

POCATELLO — Minico High School's track team finished second and third in a three-way Gem State Conference meet at Highland High School Friday.

The Spartan girls took second to Highland, 104 points to 47, but the boys finished third behind the Rams and Blackfoot.

See complete details in Sunday's Times-News.

**King, Alcott lead Dinah Shore**

RANCHO MIRAGE, Calif. (AP) — Betsy King finished off a wind-swept, erratic round by sliding two birdsie putts Friday in the final hole for the lead midway through the \$500,000 Dinah Shore tournament.

King and Alcott each had 3-over-par 75s as winds gusting up to 40 mph at Mission Hills Country Club sent second-round scores soaring.

Jan Stephenson had a second-round 73. Val Skinner had a 75, and Judy Rosenthal a 72 for 144 totals, one shot behind the leaders.

**Testaverde signs with Bucs**

TAMPA, Fla. (AP) — Vinny Testaverde, the Heisman Trophy winner some scouts rate as the best quarterback to come out of college since Joe Namath, signed a six-year contract with the Tampa Bay Buccaneers, the team said Friday.

The signing that will make Testaverde the richest rookie in NFL history came more than three weeks before the Bucs will pick him No. 1 in the draft.

Terms of the agreement reached Thursday were not disclosed, but the former University of Miami star reportedly will be paid \$8.2 million.

**Edwards leads at Starsport**

GREENSBORO, N.C. (AP) — Danny Edwards fought off chilly winds to fire a 3-under-par 65 Friday and take the lead in the rain-shortened second round of the Greater Greensboro Open golf tournament.

Light rains started around noon at the Forest Oaks Country Club, but by 3 p.m., heavy rains, thunder and lightning forced two suspensions of play. A third delay came at 4 p.m. and ended play for the day with about half the field still on the cold and wind-swept course.

**Bruin thins sweep tri-meet**

IDAHO-FALLS — Twin Falls High School swept a Gem State Conference triangular track meet against Bonanza and Idaho Falls Friday afternoon.

The boys outdistanced runnerup Idaho Falls 86-63, while the girls scored 102½ points to 33 for the Tigers.

See complete results in Sunday's Times-News.

## Jerome has its own way at its own cinder meet

By LARRY HOVEY  
Times-News writer

JEROME — The Jerome Tigers had little trouble topping six other teams for the boys' and girls' championships in the 4-Club Track Invitational Friday afternoon.

The Jerome boys, relying heavily on sophomores, topped their division with 178 points against 107 for runner-up Buhl. The girls dominated 114½ over the 11th division.

Warm temperatures helped the meet but a south wind that swirled up the straightaway held times up.

The best performances probably were turned in by Laura Cecil

with a time of 48.8 seconds in the 100-meter dash and a 50.5 by Tiger Paul Hancock in the quarter mile.

Individually, Alan Schwarzwil of Wood River was the top point winner, taking the two sprints and distance items. Jerome's distance coach, Glenn Leavitt and Laura Jensen doubled up as usual. Brad Armistead of Buhl won the pole vault and the intermediate hurdles.

Top boys' 100, 48.8, Laura Cecil, 11.4; 200, 1:04.5, Cecil; 400, 2:29.5, Cecil; 800, 5:04.5, Cecil; 1,600, 10:44.5, Cecil; 3,200, 20:29.5, Cecil; 6,400, 41:14.5, Cecil; 12,800, 82:29.5, Cecil; 25,600, 164:59.5, Cecil; 51,200, 329:59.5, Cecil; 102,400, 659:59.5, Cecil; 204,800, 1319:59.5, Cecil; 409,600, 2639:59.5, Cecil; 819,200, 5279:59.5, Cecil; 1,638,400, 10559:59.5, Cecil; 3,276,800, 21119:59.5, Cecil; 6,553,600, 42239:59.5, Cecil; 13,107,200, 84479:59.5, Cecil; 26,214,400, 168959:59.5, Cecil; 52,428,800, 337919:59.5, Cecil; 104,857,600, 675839:59.5, Cecil; 209,715,200, 1351679:59.5, Cecil; 419,430,400, 2703359:59.5, Cecil; 838,860,800, 5406719:59.5, Cecil; 1,677,721,600, 10813439:59.5, Cecil; 3,355,443,200, 21626879:59.5, Cecil; 6,710,886,400, 43253759:59.5, Cecil; 13,421,772,800, 86507519:59.5, Cecil; 26,843,545,600, 173015039:59.5, Cecil; 53,687,091,200, 346030079:59.5, Cecil; 107,374,182,400, 692060159:59.5, Cecil; 214,748,364,800, 138412039:59.5, Cecil; 429,496,729,600, 276824079:59.5, Cecil; 858,993,459,200, 553648159:59.5, Cecil; 1,717,986,918,400, 1107296319:59.5, Cecil; 3,435,973,836,800, 2214592639:59.5, Cecil; 6,871,947,673,600, 4429185279:59.5, Cecil; 13,743,895,347,200, 8858370559:59.5, Cecil; 27,487,790,694,400, 17716741119:59.5, Cecil; 54,975,581,388,800, 35433482239:59.5, Cecil; 109,951,162,777,600, 70866964479:59.5, Cecil; 219,902,325,555,200, 141733928959:59.5, Cecil; 439,804,651,110,400, 283467857919:59.5, Cecil; 879,609,302,220,800, 566935715839:59.5, Cecil; 1,759,218,604,441,600, 1133871431679:59.5, Cecil; 3,518,437,208,883,200, 2267742863359:59.5, Cecil; 7,036,874,417,766,400, 4535485726719:59.5, Cecil; 14,073,748,835,532,800, 9070971453439:59.5, Cecil; 28,147,497,671,065,600, 18141943006879:59.5, Cecil; 56,294,995,342,131,200, 36283886013759:59.5, Cecil; 112,589,990,684,262,400, 72567772027519:59.5, Cecil; 225,179,981,368,524,800, 145135544055039:59.5, Cecil; 450,359,962,737,049,600, 290271088110079:59.5, Cecil; 900,719,925,474,099,200, 580542176220159:59.5, Cecil; 1,801,439,850,948,198,400, 1161084352440319:59.5, Cecil; 3,602,879,701,896,396,800, 2322168704880639:59.5, Cecil; 7,205,759,403,792,793,600, 4644337409761279:59.5, Cecil; 14,411,518,807,585,587,200, 9288674819522559:59.5, Cecil; 28,823,037,615,171,174,400, 18577349639045119:59.5, Cecil; 57,646,075,230,342,348,800, 37154699278090239:59.5, Cecil; 115,292,150,460,684,697,600, 74309398556180479:59.5, Cecil; 230,584,300,921,369,395,200, 148618797112370959:59.5, Cecil; 461,168,601,842,738,790,400, 297237594224741919:59.5, Cecil; 922,337,203,685,477,580,800, 594475188449483839:59.5, Cecil; 1,844,674,407,371,955,161,600, 1188950376898967679:59.5, Cecil; 3,689,348,814,743,910,323,200, 2377900753797935359:59.5, Cecil; 7,378,697,629,487,820,646,400, 4755801507595870719:59.5, Cecil; 14,757,395,258,975,641,292,800, 9511603015191741439:59.5, Cecil; 29,514,790,517,951,282,585,600, 1902320603038288279:59.5, Cecil; 59,029,581,035,902,565,171,200, 3804641206076576559:59.5, Cecil; 118,059,162,071,805,130,342,400, 7609282412153153119:59.5, Cecil; 236,118,324,143,610,260,684,800, 1521856482430630639:59.5, Cecil; 472,236,648,287,221,521,369,600, 3043712964861261279:59.5, Cecil; 944,473,296,574,443,043,739,200, 6087425929722522559:59.5, Cecil; 1,888,946,593,148,887,087,478,400, 12174851859445045119:59.5, Cecil; 3,777,893,186,297,775,175,956,800, 24349703718890090239:59.5, Cecil; 7,555,786,372,595,551,351,913,600, 48699407437780180479:59.5, Cecil; 15,111,572,745,191,102,703,827,200, 97398814875560360959:59.5, Cecil; 30,223,145,490,382,205,405,411,654,400, 194797637511120721919:59.5, Cecil; 60,446,290,980,764,410,810,908,908,800, 3895952750222414439:59.5, Cecil; 120,892,581,961,528,821,621,817,817,600, 7791905500444828879:59.5, Cecil; 241,785,163,923,057,643,243,635,635,200, 15583811000889657759:59.5, Cecil; 483,570,327,846,107,287,287,271,271,200, 31167622001779315519:59.5, Cecil; 967,140,655,692,214,574,574,542,542,400, 62335244003558631039:59.5, Cecil; 1,934,281,311,384,428,114,858,108,108,800, 12467048807117326079:59.5, Cecil; 3,868,562,622,768,856,236,216,216,160, 24934097614234652159:59.5, Cecil; 7,737,125,245,537,712,432,432,320, 49868195228469304319:59.5, Cecil; 15,474,250,491,075,464,864,864,640, 99736390456938608639:59.5, Cecil; 30,948,500,982,150,929,729,729,512, 199472780913877217279:59.5, Cecil; 61,897,001,964,301,859,459,459,264, 398945561827754434559:59.5, Cecil; 123,794,003,928,603,719,918,918,128, 79789112365550886919:59.5, Cecil; 247,588,007,857,207,439,837,837,64, 159578224731101773839:59.5, Cecil; 495,176,015,714,414,876,674,674,32, 319156449462203547679:59.5, Cecil; 990,352,031,428,828,948,134,872,16, 63831289892440709539:59.5, Cecil; 1,980,704,062,857,657,896,269,736,8, 127662579784881419079:59.5, Cecil; 3,961,408,125,715,315,792,539,464,4, 255325159569762838159:59.5, Cecil; 7,922,816,251,430,631,584,1078,928,2, 510650319139525676319:59.5, Cecil; 15,845,632,502,861,263,1167,856,1, 102130063827905132639:59.5, Cecil; 31,691,265,005,722,526,233,712,4, 204260127655810265279:59.5, Cecil; 63,382,530,011,453,052,466,142,2, 408520255311620530559:59.5, Cecil; 126,765,060,022,906,109,284,71, 817040510623241061119:59.5, Cecil; 253,530,120,045,812,218,568,35, 1634081021446482122239:59.5, Cecil; 507,060,240,091,624,436,113,68,17, 3268162042892964244479:59.5, Cecil; 1,014,120,480,183,248,872,227,36,8, 6536324085785928488959:59.5, Cecil; 2,028,240,960,366,496,554,73,72,4, 13072648171571856979:59.5, Cecil; 4,056,481,920,732,992,1109,44,2, 26145296343143713959:59.5, Cecil; 8,112,963,840,146,182,221,88,1, 52290592686287427119:59.5, Cecil; 16,225,927,680,292,364,443,76,0, 104581185372574844239:59.5, Cecil; 32,451,855,364,588,727,152,152,0, 209162370745149688479:59.5, Cecil; 64,903,710,729,117,145,304,304,0, 418324741490299376959:59.5, Cecil; 129,807,421,458,234,290,608,608,0, 83664948298059875389:59.5, Cecil; 259,614,842,916,468,581,216,1216,0, 167329896596119750779:59.5, Cecil; 519,229,685,832,937,163,243,243,0, 334659793192239511559:59.5, Cecil; 1,038,459,367,665,864,486,486,0, 669319586384479031119:59.5, Cecil; 2,076,918,735,331,732,972,972,0, 133863917276894062239:59.5, Cecil; 4,153,837,470,663,464,194,464,0, 267727834553788124479:59.5, Cecil; 8,307,674,941,327,928,928,0, 535455669107576248959:59.5, Cecil; 16,615,349,882,655,856,185,856,0, 10709113382151524979:59.5, Cecil; 33,230,699,765,311,712,371,712,0, 21418226764303049559:59.5, Cecil; 66,461,399,530,623,423,423,0, 42836453528606099119:59.5, Cecil; 132,922,799,061,246,846,846,0, 85672907057212198239:59.5, Cecil; 265,845,598,122,493,693,693,0, 171345814114424396479:59.5, Cecil; 531,691,196,244,987,387,387,0, 342691628228848792959:59.5, Cecil; 1,063,382,392,489,974,774,774,0, 6853832564576975859:59.5, Cecil; 2,126,764,784,979,949,549,549,0, 13707665129153917119:59.5, Cecil; 4,253,529,569,959,898,1099,1099,0, 27415330258307834239:59.5, Cecil; 8,507,059,139,919,797,2198,2198,0, 54830660516615668479:59.5, Cecil; 17,014,118,279,839,596,4396,4396,0, 10966132103323336959:59.5, Cecil; 34,028,236,559,678,1183,8792,8792,0, 21932264206646673919:59.5, Cecil; 68,056,473,119,357,356,17584,17584,0, 438645284132933479:59.5, Cecil; 136,112,946,238,714,714,3516,3516,0, 877290568265866959:59.5, Cecil; 272,225,877,437,428,1403,878,1403,0, 17545811365317339:59.5, Cecil; 544,451,754,874,856,2807,2807,0, 35091622730634679:59.5, Cecil; 1,088,903,509,749,714,5614,5614,0, 7018324546126959:59.5, Cecil; 2,177,807,019,498,428,11228,11228,0, 140366490922539:59.5, Cecil; 4,355,614,038,996,856,22456,22456,0, 280732981845079:59.5, Cecil; 8,711,228,077,993,714,44912,44912,0, 561465963690159:59.5, Cecil; 17,422,455,987,986,428,89824,89824,0, 1122931927380319:59.5, Cecil; 34,844,911,975,972,856,17964,17964,0, 2245863854760639:59.5, Cecil; 69,689,839,951,944,714,35928,35928,0, 4491727709521279:59.5, Cecil; 139,379,679,903,938,568,71856,71856,0, 8983455419042559:59.5, Cecil; 278,759,359,806,976,428,14372,14372,0, 1796691083808519:59.5, Cecil; 557,518,719,612,952,856,28744,28744,0, 3593382167617039:59.5, Cecil; 1,115,037,439,224,904,1714,57488,57488,0, 7186764335234079:59.5, Cecil; 2,230,074,878,448,1828,34296,34296,0, 1437352866846839:59.5, Cecil; 4,460,149,756,896,3656,68592,68592,0, 2874705733693679:59.5, Cecil; 8,920,299,513,792,7312,





STORE HOURS: SATURDAY 10-6 - SUNDAY 12-4

TWIN FALLS

**MISSES SPORTSWEAR COORDINATES SAVE 33%**

Choose from a terrific selection of spring styles, fabrics and colors in coordinating pants, jackets, skirts and tops. By Alfred Dunner®, Devora® Korat® and Russ® Orig. 1800-6000. Misses Sportswear



**PERSPECTIVES & MISSES BLOUSES SAVE 25%**

A large selection of the latest for spring. In Perspectives: Camp shirts, dressy solids and prints, knit collar style, reg. 2600-4200. In Misses: Blouses: Camp shirts, georgie prints, "liquid silk" polyesters, short sleeve prints, long cut silhouette, reg. 2200-3400.



**MISSES SPORTSWEAR & PANTS SAVE 25%**

Haggas® Prestige™ belted twill, misses 8-20, reg. 2900 (shown). Jamie White Calcutta cloth pants in short and average lengths, sport skirts, slim leggings, misses 8-18, reg. 1800. Trail jackets, pants in short and average lengths, misses 8-18, reg. 2000-2600. All cotton/polyester blends, spring colors. Misses Sportswear.



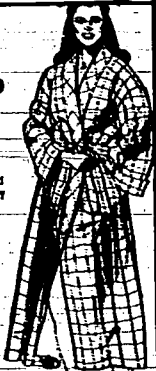
**MISSES SPRING DRESSES 29.99-59.99**

Save 25-40%. Choose from the latest spring colors and fabrics in a selection of styles right for 9 to 5 and after, and special occasions. Special purchase, 29.99 or 1 reg. 66-10500. Misses Dresses.



**CYPRESS TERRY ROBE SAVE 25%**

5 DAYS ONLY. Thick and thirsty pure cotton terry for the beach, pool or lounging. White with royal, s-m-l. Also available by special order in white with red or green. Reg. 4800, 25% off April 2-6. Spa Shop. Intimate Apparel.



**GENUINE IVORY JEWELRY 799-72.99**

Necklaces, bracelets, pins, charms and earrings with gold-filled posts. Shown is representative of assortment. Fashion Jewelry.



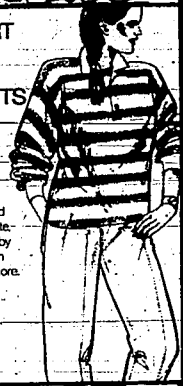
**LEATHER HANDBAGS 19.99-39.99**

Reg. to 5000. Terrific spring styles in white, bone and fashion brights. By Equitable, Toni, Rivage and B.H. Smith. Fashion Handbags.



**RUGBY SHIRT 24.99 CASUAL PANTS 21.99-24.99**

Authentic rugby styling with woven collar, banded cuffs, bold stripes on white, s-m-l, reg. 32.00. Pants by Cherokee, Sync by Union Bay®, Casablanca and more. A great selection, sizes 6-16, reg. 2800-3200. Perspectives.



**SELECTED JUNIOR CAREER DRESSES SAVE 25%**

New spring looks in a large assortment of the latest colors, fabrics and career styles. Shown is representative of selection. Jr. sizes 5-13, reg. 4800-7800. Junior Dresses. The Cube.



**SPRING CLASSIC PUMPS YOUR CHOICE 32.99**

Career mid heel by Fanfares® special value 32.99. Mid heel "Missy" by Marqua, elasticized sling back, leather upper, orig. 42.00. Cut out detail styling "Huddle" by Fanfares®, leather upper, orig. 44.00. In new spring colors and bases. Sizes 7-9M, 5½-9M. Women's Shoes.



**SPRING WOVEN CASUALS, YOUR CHOICE 29.99**

Open toe, low heel "Ivy" by Fanfares® orig. 42.00. Fanfares® "Latch" with low stacked heel, leather upper, orig. 42.00. Sling back "Party", leather upper, orig. 38.00. In new spring colors and basics. Sizes 7-9M, 5½-9M. Women's Shoes.



**CATALINA® SWIMWEAR 21.99 EACH**

Reg. 2800 each. Peccod surgeon's shirt, s-m-l-xl. Peccod jans with elastic drawstring waist, inside pocket, s-m-l-xl. Men's Activewear.



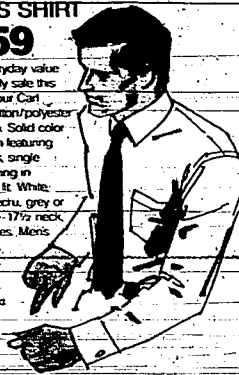
**PURE SILK TIES 12.99**

Reg. 1850. Pick your color! With our England patterned tie, the choices go on and on... classics, bold-brights, the lighter shades of spring. By Malory and Church® of imported Italian silk. Men's Furnishings.



**OXFORD CLOTH DRESS SHIRT 13.59**

Was an everyday value at 16.59. Only sale this season on our Coat. Michaels cotton/polyester Oxford cloth. Solid color button down featuring long sleeves, single needle tailoring in gents' sizes. White, blue, pink, ecru, grey or maize. 14½-17½ neck. 33-35 sleeves. Men's Dress Shirts. \*Not all colors available. \*You may be special ordered.



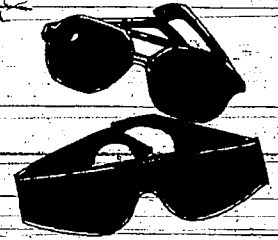
**AWNING STRIPE SHIRT 19.99 COTTON TWILL PANT 21.99**

Cool and crisp short sleeve shirt of 100% cotton by World Island. Assorted colors on white, s-m-l-xl, reg. 28.00. Unconstructed pant sported by American Blue. 100% cotton in white, power, khaki, sizes 30-40, reg. 35.00. Men's Sportswear.



**TROPIC CAL® SUNGLASSES SAVE 33-45%**

A good looking way to protect eyes from the sun's glare. All in assorted colors. Superdark lens, reg. 15.00, 9.99. Photon lens, reg. 15.00, 9.99. SunMagic style, reg. 18.00, 9.99. Men's Furnishings.



Bon Brand Spring Hosiery Collection, pant socks, stockings, sheer to waist, control top pantyhose and textures in sizes A-B-C, reg. 300-500, 2.25-3.75.

Misses Knit Tops in fresh spring colors, sizing prints, by David Brett, Townhouse and Jason Maxwell, reg. 1600-2400, 25% OFF.

Entire Stock Perspectives Related Separates, by famous makers, in linen, cotton and knit blends, reg. 30.00-60.00, 25% OFF.

Famous Maker Spring Dresses, in the latest fabrics, colors.

Misses Dresses, reg. 80.00-100.00, 25% OFF.

Misses and Women's Spring Coats and Jackets, the latest long and short styles in new spring colors, reg. 25.00-200.00, 19.99-159.99.

Famous Maker Belts, wovens, stretch, leather and textures in spring colors, Fashion Accessories, reg. 14.00-18.00, 9.99.

Entire Stock Olga® Bras, Underwire #3307, 34-36 B-C, reg. 17.00-19.00; Contour #344, 34-36 A, B, reg. 15.00;

Padded #310, 34-36 A, B, reg. 17.50; basic and fashion colors, ALL 25% OFF. \*Does not include Olga® Christmas underfashions.

**INQUIRE ABOUT THE MANY ADVANTAGES OF A BON CHARGE CARD**