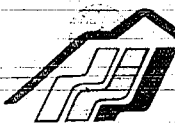


Inside today

<b>Prep scores</b>	Twin Falls 67, Meridian 59	Bishop Kelly 50, Buhl 43	Jerome JV 57, Bliss 49	Wendell 61, Glenns Ferry 56	Murtaugh 53, Oakley 48	Camas County 61, Richfield 54
	Jerome 71, Wood River 46	Kimberly 57, Valley 54	Gooding 58, Filer 57	Shoshone 67, Castelford 59	Jackpot 77 350 7/26/89 KALVAR CORP 3322 S 3RD E SALT LAKE CITY UT 84115	350 7, 4



# The Times-News

Copyright 1989  
Magic Valley Newspapers Inc. **35°**

84th year, No. 35

Twin Falls, Idaho

Saturday, February 4, 1989



**Mardi Gras night**

Saying "yes" to fun was the order of the night as costumed revelers spent Friday night celebrating Mardi Gras-style at the CSI Foundation's Flatlander's Ball at the Twin Falls Elks Lodge. Disguised party-goers Joan Edwards, left, Jerry Beck, center, and Leo Wagner compare costumes before the ball. Festivities included dinner, downtown and costume prizes.

## Roads, schools close as cold grips Idaho

By The Associated Press

Schools and highways were closed and even snowmobile races postponed Friday as Idaho continued to shiver through the coldest weather of the winter.

The National Weather Service said wind chill sent temperatures in the eastern and central parts of the state as low as 80 degrees below zero. And things were expected to get worse as a cold air mass continued south from Montana.

But the brunt of the Alaskan cold bypassed much of southern Idaho as the northern mountains deflected the coldest air east of the Continental Divide, said Lab McCloud of the Weather Service in Boise.

"We're being pretty well protected by the Bitterroot and Sawtooth mountains," he said. "The mountains stop its progress unless the winds blow it over the top."

A temperature of 7 below was reported at Idaho Falls overnight, with winds gusting up to 30 mph. A low of 28 below was reported at Dubois, a town of 400 where local residents and an estimated 200 travelers have been stranded since Wednesday. Roads out of the area remained closed Friday.

A low of 35 below at Salmon, combined with wind gusts up to 35 mph, reportedly sent the wind chill factor to 105 below zero. No flooding was reported in the area, but Salmon River wader Dale Ford predicted ice jams would move into the area

### Area under wind chill advisory

The weather service has issued a wind chill advisory for the weekend.

Temperatures in the Twin Falls area are expected to drop to zero to 5 below overnight with winds from 15 to 25 mph. The wind chill will drop the effective temperature to 50 degrees below zero.

Wind chill is described the effect of wind on exposed skin.

Fast winds will cause some drifting snow on north-south roads. Saturday will be windy and cold with an expected high about 11 degrees. Afternoon winds should be about 15 to 25 mph, bringing the wind chill to about 35 degrees below zero.

The low Saturday is expected to be about 5 below. Sunday should be mostly sunny with a high climbing to near 10 above, but the wind will be considerably less, said Bill Galkin of the National Weather Service in Kimberly.

The northerly flow of cold air will keep the Magic Valley brisk into next week.

Combined with the low temperatures, the wind calls for extra caution when going outside, Galkin said. Livestock owners should insure their animals have unfrozen water and adequate shelter from the wind.

### Avoid frostbite — A5

Schools were closed, along with those in Madison, Fremont and Jefferson counties. The Snake River School District near Blackfoot also dismissed students.

The Fremont County Courthouse in St. Anthony was closed, and there was no garbage collection in St. Anthony because of frozen hydraulics on the garbage truck.

The Island Park Ranger Station at Pond's Lodge reported a low of 36 below, and Last Chance reported a low

## Bitter cold, freezing drizzle spread over much of nation

The Associated Press

Record lows were scattered from Oregon to Iowa, including 35 below zero at Great Falls, Mont. Mason City, Iowa, had a low of 29 below zero, but wind gusting to 31 mph produced a wind chill factor of 78 below zero. Minong, Wis., hit 32 below zero.

At noon, the temperature was only 27 degrees below zero at Bozeman and Butte, Mont. The weather service's official low for the Lower 48 states was 32 degrees below zero at Wisdom, Mont.

But ahead of the cold air, 14 cities in the Southeast and East reported record highs, ranging from 61 at Beckley, W.Va., to 84 at Jacksonville, Fla.

The cold reached all the way to New Orleans on Friday, less than five days before Mardi Gras. Snow, sleet, ice, or 20 mph or more winds. These are the only things that would stop a parade," said Assistant Police Chief Ray Holman.

In Montana, the first state struck by the frigid air that had previously

stunned Alaska had slid over Canada, moderation of temperatures isn't expected until Monday or Tuesday, and then it could warm only to about zero, said weather service spokesman Robert Doherty.

The mass of cold air remained over the eastern two-thirds of Alaska, but temperatures continued to moderate. Northway was the coldest at 50 below. Fairbanks warmed up to minus 8 and Anchorage reached 10 above. A low pressure system moving in from the west warmed the western third of Alaska, above the Arctic Circle. Barrow reached 16 above and it was 20 above at Prudhoe Bay.

Montana's state government reopened Friday after shutting down the day before because of the cold and wind, but Wyoming Gov. Mike Sullivan closed his government because of the cold and more than a foot of snow. Arkansas Gov. Bill Clinton gave state workers more

## Fair board boosts admission price for grandstand, grounds

By MARTA CLEAVELAND  
Times-News writer

TWIN FALLS — While the issue of Latham Motors' sponsorship of the rodeo remains on hold, the Twin Falls County Fair Board voted Friday to raise 1989 prices for both fair admission and the grandstand show.

Adult admission to the fair grounds will be \$3, up from \$2.50 last year. The \$1.50 fee for children aged 13 and under will remain unchanged.

The increase will used exclusively

to finance capital improvements. One dollar from each ticket will go into a fund for the purpose.

"We've got the best deal in town even at \$3," said board member Jack Ramsey.

"It's still the cheapest fair in the state of Idaho that charges a gate," said Emmett Harrison, chairman of the board.

Only Dale Peterson voted against the increase.

The board voted unanimously to raise the ticket prices for the grand-

stand show from \$10 to \$12 for the best seats and from \$7.50 to \$10 for second-ring seats.

The Oak Ridge Boys, who will perform this year, can easily draw a full house with those increased prices, said Terry Tario, general manager of KEZJ radio, who will promote the show.

An additional 200 chairs will be added on the floor this year. Tickets sales will begin in June.

The fair will be expanded from

## House snipes at Senate in fight over pay raise

The Associated Press

WHITE SULPHUR SPRINGS, W.Va. — Top House Democrats, leading their members to a weekend retreat at the luxurious Greenbrier resort, tried to put the onus on the Senate Friday as they faced heat over Speaker Jim Wright's plan to let a 50 percent congressional pay raise take effect, at least temporarily, next week.

But many lawmakers doubted Wright's gambit — letting the raise automatically go through and then having the House vote to cut it back to 20 percent — would end public demand for rescinding the entire \$17,500 pay increase.

Rep. Tony Coelho, the House majority whip, told reporters the Senate will vote on Wednesday to reject the

pay raise was an easy one that left the difficult decision to the House.

"We intend to send that 50 percent increase over to the Senate, those folks over there who are very strong willed, and we'll stand up and see what they do and see if they're interested in a 50 percent increase or not," he said.

"We're taking the heat and they're not," he said, defending the need for a pay increase or some sort.

The chairman of the House Democratic organization, Rep. William H. Gray III, D-Pa., said the Senate was "wanting it both ways — keeping honoraria and after-hours (earnings) while appearing to be pure on the pay raise."

The pay raise would increase rank-and-file congressional salaries from \$57,500 to \$115,000.

## Hot streak of '80s continues with record temperatures in 1988

The Washington Post

The world was warmer last year than in any other of the 130 years global temperature records have been kept, continuing the hot streak of the 1980s. British meteorologists reported Friday.

With five earlier years of this decade having been the five warmest on record, the 1988 results were interpreted by some U.S. scientists as compelling evidence that a long-term global warming is under way. Some attribute it to the "greenhouse effect," in which gases released by factories and cars blanket the Earth and trap solar heat.

But other scientists said regional variations in temperatures as well as changing methods in collecting weather data over the years make such conclusions premature.

This tells us we need to be alert for further changes in case this is the beginning of world warming due to the greenhouse effect," David Parker, a senior research scientist at the British Meteorological Office, said of the 1988 data. "It's suggestive of the greenhouse effect, but it's not conclusive evidence."

Scientists said the study does not contradict an earlier report showing that within the "lower 48" part of the United States, there has been no evidence of a warming trend over the past century.

That study showed that the average temperature in the lower United States has fluctuated around a fairly stable century-long average of 52.5 degrees. Climatologists say the area, occupying 1.5 percent of the Earth's surface, is too small to be representative of world trends.

The British office and the University of East Anglia Climatic Research Unit, the world's oldest, most comprehensive center for global climate analysis, collected data from more than 1,000 weather stations on land and sea around the world and found that the average year-round air temperature of the Earth in 1988 was 0.61 degrees higher than the average of 57.1 degrees for the period 1950-79.

Parker said the 1988 average temperature just exceeded 1957's level of 57.5 degrees and 1953's level of 57.56 degrees — the two previous highest years on record.

According to James E. Hansen, a top National Aeronautics and Space Administration climatologist, the average temperatures for 1957 and 1953 are nearly three times higher than would be expected from the normal fluctuations of weather recorded during the past 50 years.

# Energy official says waste site may not open in September

BOISE (AP) — A U.S. Department of Energy official has conceded that a New Mexico nuclear waste repository may not open on schedule in September, but the Andrus administration continues to assume it will.

"The Sept. 1 date is very optimistic," said James Bickel, an assistant DOE manager for projects and energy programs based in Albuquerque, N.M.

Bickel briefed Idaho legislators Thursday on the department's long-delayed Waste Isolation Pilot Plant, which is being built in salt caverns near Carlsbad, N.M.

He said the earliest shipment to WIPP could possibly begin by August, but that waste stored since the 1960s and 1960s at

the Idaho National Engineering Laboratory would be a priority for early transfer.

"The first shipment to WIPP will be from the INEL," Bickel said.

But Don Hancock, director of the Albuquerque-based Nuclear Waste Safety Project at the Southwest Research and Information Center, said Friday that he does not expect WIPP to open in 1989, and that it never should open at all.

The ultimate long-term solution to the nation's nuclear waste disposal problem is not yet in sight, will be very expensive and will involve technology not yet developed, Hancock said.

"Frankly, wastes in general are going to stay where they are for some significant

length of time," he told reporters at a news conference. "That's not a good way for things to work out, but frankly, it might be the best way for things to work out for the time being."

Idaho Gov. Cecil Andrus banned any additional shipments of radioactive waste bound for temporary storage at the INEL last October after visiting the WIPP site. He blasted the Department of Energy for repeatedly failing to meet deadlines for opening the permanent waste repository.

The department pledged this week to spend more than \$50 million over the next 75 years to clean up buried waste at the INEL. But Andrus said this week that he would not consider opening Idaho's borders

to more waste shipments until land transfer legislation is introduced in Congress to shift control of the WIPP site from the Department of the Interior to the DOE.

Meanwhile, radioactive shipments from the Rocky Flats nuclear weapons plant near Denver are stalled from moving to Idaho.

Andrus spokesman Marc Johnson said the governor continues to work on the assumption that WIPP will be open by Sept. 1, if DOE officials aggressively pursue their plan.

However, he said there are another of other factors that could delay the opening.

Bickel acknowledged that events outside the department's control could interfere, including environmental clearance, the land

transfer and meeting the requirements of the Resource Conservation and Recovery Act covering certain toxic or radioactive wastes.

Hancock said those problems and DOE's failure to meet even what he characterized as inadequate health and safety standards set by the Environmental Protection Agency should keep WIPP from accepting any waste.

He also cited the failure of shipping containers proposed for transporting waste to the New Mexico facility.

The TRUPACT II container has to be certified by the Nuclear Regulatory Commission. Given problems with the TRUPACT, it is "sheer speculation" the commission will approve them, Hancock said.

## Today's weather Wind, cold to continue through weekend

**Twin Falls, Burley, Rupert, Jerome and Gooding:**

Windchill advisory continued today. Today, windy and cold with morning snow showers. New snow 1 inch. Northeast winds 15 to 25 mph with blowing and drifting snow. High 5 to 12. Windchill near 35 by late zero. Tonight, very cold with scattered light snow showers. Lows zero to 8 below. Sunday, mostly sunny. High near 10.

**Camas Prairie and Wood River Valley:**

Today, partly cloudy with a chance of light snow in the morning. New snow one inch or less. High 5 to 8 below. North winds 10 to 15 mph. Areas of blowing and drifting snow. Tonight, bitterly cold. Partly cloudy with widely scattered light snow showers. Lows 15 below to 20 below zero. Sunday, mostly sunny and cold. High near 10 below zero.

**Northern Utah and Nevada:**

Utah — Periods of snow with 4 to 6 inches accumulation in the valleys and up to a foot of snow in the mountains. Periods of snow continuing today through Sunday. High today in the 20s. Lows tonight in the teens. High Sunday in the low 20s. Light winds.

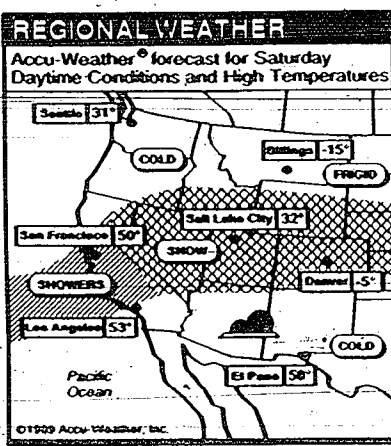
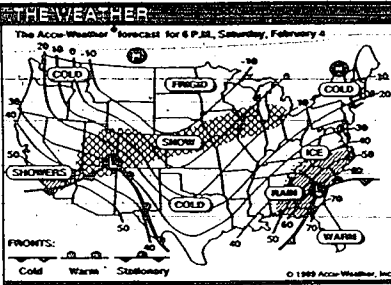
Nevada — Winter storm watch today. Snow, possibly heavy, Saturday. Decreasing snow showers tonight then partly cloudy Sunday with scattered snow showers in the east. Sunday, High temperatures in the upper teens to upper 20s. Lows 8 to 15.

**Summary:**

Late afternoon temperatures ranged from the teens below zero in the north through the central mountains to the teens above zero in the southeast and southcentral portions of Idaho Friday.

Light snow was reported across much of the south. Windy conditions continued in the southeast and southcentral portions with wind chills from 22 to 33 below zero while winds in the north were causing chill factors from 16 to 40 below zero.

The warmest temperature in the state Friday was 24 degrees at Malad. Elk City reported the coldest at -31 degrees.



Meadows, icy spots, broken snow floor, drifts; Marsing-Oregon line, wet, snowing.

Interstate 81 — Caldwell area, dry, icy spots; Boise area, wet; Boise-Glenns Park, dry, wet, snowing; Bliss-Twin Falls, dry, icy spots; Twin Falls-Burley, dry, icy spots; snowing, drifts; Burley-Booth lake, icy spots, broken snow floor, drifting.

Idaho 75 — Horseshoe Bend-Danville, wet, icy spots, broken snow floor, snowing; Donnelly-Saw Meadows, broken snow floor, snowing.

Idaho 21 — Boise-Idaho City, wet, icy spots, broken snow floor, snowing; Idaho City-Lawman, snow floor, snowing; Grantlinton Junction-Statley, icy spots, broken snow floor.

U.S. 20 — Mountain Home-Fairfield, wet, broken snow floor, snowing; Fairfield-Carey, wet, icy spots, light drifts; Carey-Area, broken snow floor, light drifts; Area-Idaho Falls, broken snow floor, drifting.

Idaho 75 — Shoshone-Ketchikan, icy spots, light drifts; Galena Summit, broken snow floor, snowing.

Interstate 86 — Raft River-American Falls, icy spots, broken snow floor, snowing; American Falls-Booth lake, icy spots, broken snow floor, snowing.

Interstate 15 — Ush line-Pocatello, dry, icy spots; Pocatello-Dalton, icy spots, snowing, drifts; Minidka Pass, closed.

U.S. 20 — McCallman-Soda Springs, wet, icy spots, drifting; Soda Springs-Wyoming line, snow floor, drifting.

Idaho Falls-Galena, icy spots, drifting; Ashton-Montana line, closed.

U.S. 26 — icy spots, snow floor, snowing, drifts.

Idaho 1 — snow floor, snowing.

U.S. 20 — Nevada line-Area, icy spots, light drifts; Area-Area, broken snow floor; Carey-Simion, dry, broken snow floor, light drifts; Lost Trail Pass, icy spots, snow floor, drifting.

## Cold Fair

Continued from Page A1

time to get to work because of icy roads.

"We've been advised by the city (Cheyenne) and the county that snow is accumulating and they're just not able to keep up with it," Dennis Curran, Sullivan's press secretary, said Friday.

An estimated 200 travelers had been stranded since Wednesday at Dubois, Idaho, and roads out of the area remained closed by snow Friday, among a number of highways closed in the state.

Many schools in Arkansas, Colorado, Idaho, Iowa, Kansas, Missouri, Montana, Nebraska, Nevada, New York, Oklahoma, Oregon, South Dakota, Texas, Washington state and Wyoming told students to stay home Friday because of slippery roads and the cold. Some colleges and universities also closed.

"It's not the cold, because we've been open in much colder weather," said Bill Tiets, president of Montana State University at Bozeman. "It's the wind chill we're concerned about."

Continued from Page A1

five to six days this year, said Dan Peters, fair manager. The fair will begin on Monday, Labor Day, instead of Tuesday.

The decision on whether to retain Latham Motors Dodge as a radio sponsor or replace it with local General Motors Corp. dealers has been postponed until the March board meeting.

GMC has made an offer to the board, but because Dodge Corp. has a contracted right of first refusal on any professional radio sponsorship package, it can still be the 1989 radio sponsor simply by matching GMC's offer. If the fair board rejected an equal offer from Dodge, it would risk losing its designation as an official Professional Rodeo/Cowboys Association rodeo.

"We want to keep Dodge, but we can't put up with the problem we've had in the past," said Gary Grindstaff, who heads the board's rodeo committee.

The board wanted to terminate Latham's sponsorship because years of abuses of fair personnel and privileges by Latham employees have gone unchecked, the board said.

"The Dodge corporate sponsor is reviewing the GMC offer. The board should know in 10 days whether it will match the offer," Dodge has promised the board.

that if buses continue in 1989, it will waive its right of first refusal and let the board choose any sponsor it wants.

GMC's offer includes a \$5,000 direct payment to the fair board, which is \$2,500 more than Latham paid it in 1988. It also promises to spend \$20,000 on advertising that mentions the rodeo, as well as use of vehicles, flags and banners. The total contract is valued at \$30,720.

In other business the board voted 6-1 to build a new merchants' display building if the financing can be worked out.

The contract would go to Darren Hall Construction Co. of Twin Falls, which submitted the lowest of three bids for the project. Hall bid \$78,897, but with the addition of a ceiling and insulation the price will be around \$82,000.

The fair is getting bigger every year, Harrison said. In 1988, twice as many merchants wanted to be inside the display buildings as there were spaces available.

Cotton Resser's Flying U Rodeo will cut on the rodeo again this year. The board voted to pay him \$34,000 for four nights. That's \$1,000 less than he was paid last year, but this year he won't be providing the chutes for mutton busting.

— Lori and Mickey Young, owners of Silver Lining Rodeo Co. of Jerome, had also vied for the rodeo contract.

Two school buses collided on an icy parking lot in Indianapolis, and 17 elementary school students suffered minor injuries, officials said.

Many cities stepped up aid to the homeless.

Shelters in Denver agreed to remain open during the day, rather than putting their clients out on the street until nightfall, said Christine Hager, Denver's coordinator for the homeless. The city also contracted with hotels to house homeless people, Hager said.

Some homeless shelters in Oregon reported operating beyond normal capacity. In Minneapolis, as many as 400 people slept outside Thursday night, including 150 in campers, said Mary Jo Copeland, director of Sharing and Caring, a day shelter for the poor. Four homeless people have been treated for frostbite.

At Paducah, Texas, hundreds of people were left without heat when a 4-inch natural gas pipeline ruptured.

Limit 1 per customer per day

**MANY OTHER ITEMS ARE ON SALE!**

Come in today—offer good through Valentines Day.

**FEBRUARY IS TIME FOR AFFAIRS OF THE HEART**

When you purchase any Living, Loving pet or pet supply worth \$25.00 or more for Valentines Day, We'll give you a FREE loaf of Eddy's "Good for your Heart" Bread

## Idaho

Continued from Page A1

Road closures include Idaho Highway 47 from Ashton to Bear Gulch, Idaho 32 from Ashton to Tetonia, Interstate 15 from Sage Junction to Monida, Idaho 22 from Dubois to the junction with Idaho 28 and U.S. 20 west to the Idaho National Engineering Laboratory.

No official weather report was available in Challis because the Challis National Forest dispatcher and weather data recorder was unable to get his car to start.

Northern Idaho residents also struggled with dead batteries and ruptured water pipes Friday, and there was no relief in sight.

"The cold will continue till the end of next week," said Weather Service forecaster Donald Warner in Lewiston. "There will be some moderation, but not much help."

But Ken Holmes, meteorologist in charge of the Weather Service office in Spokane, Wash., said temperatures were expected to bottom out at about 20 below Friday night and begin a slow return to the normal range of 20 to 30 degrees.

Temperatures were forecast to hit 15 below zero in the Moscow-Lewiston area over the weekend. Gusty winds could send the wind chill factor as low as 25 below zero at night. The lowest temperature ever recorded at Lewiston was 23 below zero, in December 1919.

—The Moscow, White Pine and Pocatello school districts remained closed for a second day Friday. Classes at the University of Idaho were in session, but some continuing education classes at night were canceled.

Idaho State Police dispatchers warned motorists that the new snow in the area made driving hazardous. Blizzard warnings remained in effect throughout the region.

But after a rash of sheetrock and reports of stranded vehicles Wednesday and Thursday, things began to quiet down Friday.

**Pets & Plants**

733-0506 • Lynwood Shopping Center

**National**

City	High	Low	Wind
Albuquerque	57	34	W 15-20
Albany	27	24	W 10-15
Albuquerque	37	27	W 10-15
Albuquerque	27	21	W 10-15
Albuquerque	27	21	W 10-15
Albuquerque	27	21	W 10-15
Albuquerque	27	21	W 10-15
Albuquerque	27	21	W 10-15
Albuquerque	27	21	W 10-15
Albuquerque	27	21	W 10-15

**Twin Falls**

City	High	Low	Wind
Albuquerque	57	34	W 15-20
Albany	27	24	W 10-15
Albuquerque	37	27	W 10-15
Albuquerque	27	21	W 10-15
Albuquerque	27	21	W 10-15
Albuquerque	27	21	W 10-15
Albuquerque	27	21	W 10-15
Albuquerque	27	21	W 10-15
Albuquerque	27	21	W 10-15
Albuquerque	27	21	W 10-15

**Idaho**

City	High	Low	Wind
Albuquerque	57	34	W 15-20
Albany	27	24	W 10-15
Albuquerque	37	27	W 10-15
Albuquerque	27	21	W 10-15
Albuquerque	27	21	W 10-15
Albuquerque	27	21	W 10-15
Albuquerque	27	21	W 10-15
Albuquerque	27	21	W 10-15
Albuquerque	27	21	W 10-15
Albuquerque	27	21	W 10-15

## Index

Business.....	B4-5	Magic Valley.....	A4	Religion.....	A6
Classified.....	B5-10	Mutual funds.....	B5	Scores and Stats.....	B2
Comics.....	A8	Nation.....	A7, A10	Sports.....	B1-3
Idaho.....	A3	Obituaries.....	A5	World.....	A8

**Circulation** — Circulation figures are based on a survey of circulation phones are manned between 7 and 10 a.m. only. If you do not receive your paper by 7 a.m., call the number for your area.

Advertising — Advertising rates are listed on page A-10. For more information, call 733-0506.

**News** — News items are listed on page A-10. For more information, call 733-0506.

**Classified** — Classified advertising rates are listed on page A-10. For more information, call 733-0506.

**Obituaries** — Obituary rates are listed on page A-10. For more information, call 733-0506.

**Religion** — Religion rates are listed on page A-10. For more information, call 733-0506.

**Sports** — Sports rates are listed on page A-10. For more information, call 733-0506.

**World** — World rates are listed on page A-10. For more information, call 733-0506.

**Advertising** — Advertising rates are listed on page A-10. For more information, call 733-0506.

**Classified** — Classified advertising rates are listed on page A-10. For more information, call 733-0506.

**Obituaries** — Obituary rates are listed on page A-10. For more information, call 733-0506.

**Religion** — Religion rates are listed on page A-10. For more information, call 733-0506.

**Sports** — Sports rates are listed on page A-10. For more information, call 733-0506.

**World** — World rates are listed on page A-10. For more information, call 733-0506.

**Engberg's**

HAND CRAFTED FURNITURE

**TOTAL LIQUIDATION OF OUR SHOWROOM**

PURCHASE THESE ITEMS AT OUR COST THIS FRIDAY & SATURDAY ONLY!

- LANE CEDAR CHEST.....\$227
- BEVELED MIRRORS.....FROM \$59
- HAND CARVED WOOD ACCESSORIES.....\$69
- SILK PLANTS.....\$15
- FRAMED PICTURES.....\$66
- LAMPS.....FROM \$29
- TELEPHONE STAND.....\$49
- DESIGNER SOFAS.....FROM \$290

(Lifetime Warranty on Frame)

- MATCHING WING-BACK CHAIR.....\$209
- OAK BUNK BED.....\$399
- OAK 6-DRAWER CHEST.....\$276
- OAK DESK.....\$199
- CHERRY DINING ROOM FURNITURE.....FROM \$129
- ORIENTAL CHESTS.....FROM \$174

**FREE OAK BATH ACCESSORY**

With Each Purchase

Pick up a detailed list at the door of all sale items.

**OPEN MON-FRI 9AM TO 7:00PM SAT-SUN 10AM TO 6PM**

2433 East Main Street • Twin Falls, Idaho • 734-7759

South of the fairgrounds on the east side of the fairgrounds.

WE TAKE CASH, CHECKS, CREDIT CARDS, AND VISA.

# Andrus signs measure Legislative log to provide game feed

**BOISE (AP)** — Gov. Cecil Andrus has signed the first bill passed by Idaho's Centennial Legislature.

The measure, making an emergency appropriation of \$708,000 the Fish and Game Department for feeding big game stranded by the harsh winter, took effect about midday Friday.



Conley said over 24,000 animals are already being given supplemental feed under the program, financed by a \$1.50 charge on big-game hunting tags.

The expenditure is the largest since the specially-financed program was enacted in 1985.

Conley said the supplemental feed would save damage the marauding animals have been causing farmers and ranchers.

Passed overwhelmingly by both the House and Senate, the bill was taken by runner to the governor's home in the foothills just north of the Capitol, where Andrus was recovering from a bout with the flu.

The emergency appropriation brings to over \$1 million the money the department has to provide supplemental feed to deer, elk and antelope.

Fish and Game Director Jerry

# Court of Appeals sides with U of I in tort claim

**BOISE (AP)** — The Idaho Court of Appeals has ruled for University of Idaho in a tort claim filed by a piano student, deciding that the claim was for a "battery" and not negligence.

Carol and Kenneth White sued the university and music professor Richard Neher. The claim alleged that Neher walked up behind Mrs. White, his student, and touched her back in a movement described as that pianist would make in striking and lifting fingers from a keyboard.

Neher said it was a teaching technique he had used with other students with no problem. But Mrs. White said the unexpected contact caused her permanent damage, including the removal of a rib, scarring of the brachial plexus nerve and severing of the scalenus anterior muscles.

Neher did not deny the contact but said he intended no harm.

But in a ruling issued Friday, the Court of Appeals said the contact qualified as battery under Idaho law. Battery does not require any desire or purpose to bring about a specific result or injury.

"It is satisfied if the actor's affirmative act causes an intended contact which is unpermitted and which is harmful or offensive," the court said.

Since the contact was battery, the claim was denied because governmental agencies are immune from any claim arising from battery by an employee under the Idaho Tort Claims Act, the court said.

The Whites claimed it was negligence by an employee, which is not immune.

The Court of Appeals ruling upheld a decision reached by 3rd District Judge J. William Hart on Dec. 21, 1987.

# Shepard released from hospital

**BOISE (AP)** — Idaho Chief Justice Allan Shepard has been released from a Boise hospital, where he had been since experiencing chest pains on Tuesday.

A spokeswoman at St. Luke's Regional Medical Center said the 66-year-old Shepard was released Friday morning after tests confirmed he did not suffer a heart attack.

State court administrator Carl Bianchi said Shepard began suffering chest pains late Tuesday afternoon and was driven to the hospital by a law clerk.

There was no immediate word on when the justice will return to work at the Supreme Court.

Shepard had a heart attack in December 1987 that kept him away from the bench until the following February. He also was hospitalized briefly in 1979 with chest pains.

# Mountain Home teachers OK pact

**MOUNTAIN HOME (AP)** — Teachers and trustees in the Mountain Home School District ratified a new master contract Friday after 16 months of on-again, off-again talks and a 12-day strike that divided the town.

"We have a lot of happy people right now," said a secretary at Mountain Home High School, who declined to give her name. She said teachers met before classes Friday and approved the tentative contract by unanimous voice vote.

School board members voted unanimously to ratify the agreement late Friday afternoon.

The Mountain Home School District has approximately 3,500 students and 300 teachers.

John Tredale, president of the Mountain Home Education Association and chief negotiator for the teachers, said agreement was reached on a contract Thursday after talks focusing on such non-economic questions as class size and preparation time.

The primary sticking point was teachers' demand for more say in setting district policy on such issues.

# Arid Club to permit women members

**BOISE (AP)** — Boise's elite Arid Club will allow women into its membership for the first time in its 99-year history.

By the smallest of margins, the club members voted 67 percent to 33 percent Thursday night to end the all-male role. Two-thirds majority was needed to open up the membership to women.

The club includes the governor and lieutenant governor as members, as well as some of the top politicians and business executives in the state.

Boise City Council President Mike Wetheroll said late Thursday he was informed by a member of the slim margin.

"It was approximately one percent," Wetheroll said. "I am not sur-

prised. I believe the people in this community generally try to do the right things and the folks in the Arid Club are community and business leaders and they realize the times are changing and realize the Supreme Court decision."

Last year, the high court upheld a New York state ruling banning discrimination at male clubs where business was discussed.

Wetheroll has proposed a city ordinance withholding liquor and other licenses to clubs that discriminated against women.

The Arid Club now holds a liquor license for its exclusive riverfront clubhouse, so it would be forced to choose between its membership policy and its liquor license.

## By The Associated Press

**Signed By Governor**  
 SB1063 (Finance) — Emergency appropriation of \$708,000 for winter feeding of wild elk, antelope and deer. Confirmed By Senate.

**Introduced in House**  
 HJR3 (State Affairs) — Proposes constitutional amendment to provide that all county commissioners will serve four year terms.

**Introduced in Senate**  
 SB1063 (Finance) — Emergency appropriation of \$708,000 for winter feeding of wild elk, antelope and deer. Confirmed By Senate.

**Introduced in House**  
 HJR3 (State Affairs) — Proposes constitutional amendment to provide that all county commissioners will serve four year terms.

**Introduced in Senate**  
 SB1063 (Finance) — Emergency appropriation of \$708,000 for winter feeding of wild elk, antelope and deer. Confirmed By Senate.

**Introduced in House**  
 HJR3 (State Affairs) — Proposes constitutional amendment to provide that all county commissioners will serve four year terms.

**Introduced in Senate**  
 SB1063 (Finance) — Emergency appropriation of \$708,000 for winter feeding of wild elk, antelope and deer. Confirmed By Senate.

**Introduced in House**  
 HJR3 (State Affairs) — Proposes constitutional amendment to provide that all county commissioners will serve four year terms.

**Introduced in Senate**  
 SB1063 (Finance) — Emergency appropriation of \$708,000 for winter feeding of wild elk, antelope and deer. Confirmed By Senate.

**Introduced in House**  
 HJR3 (State Affairs) — Proposes constitutional amendment to provide that all county commissioners will serve four year terms.

**Introduced in Senate**  
 SB1063 (Finance) — Emergency appropriation of \$708,000 for winter feeding of wild elk, antelope and deer. Confirmed By Senate.

**Introduced in House**  
 HJR3 (State Affairs) — Proposes constitutional amendment to provide that all county commissioners will serve four year terms.

**Introduced in Senate**  
 SB1063 (Finance) — Emergency appropriation of \$708,000 for winter feeding of wild elk, antelope and deer. Confirmed By Senate.

**Introduced in House**  
 HJR3 (State Affairs) — Proposes constitutional amendment to provide that all county commissioners will serve four year terms.

**Introduced in Senate**  
 SB1063 (Finance) — Emergency appropriation of \$708,000 for winter feeding of wild elk, antelope and deer. Confirmed By Senate.

**Introduced in House**  
 HJR3 (State Affairs) — Proposes constitutional amendment to provide that all county commissioners will serve four year terms.

**Introduced in Senate**  
 SB1063 (Finance) — Emergency appropriation of \$708,000 for winter feeding of wild elk, antelope and deer. Confirmed By Senate.

**Introduced in House**  
 HJR3 (State Affairs) — Proposes constitutional amendment to provide that all county commissioners will serve four year terms.

**Introduced in Senate**  
 SB1063 (Finance) — Emergency appropriation of \$708,000 for winter feeding of wild elk, antelope and deer. Confirmed By Senate.

**Introduced in House**  
 HJR3 (State Affairs) — Proposes constitutional amendment to provide that all county commissioners will serve four year terms.

**Introduced in Senate**  
 SB1063 (Finance) — Emergency appropriation of \$708,000 for winter feeding of wild elk, antelope and deer. Confirmed By Senate.

**Introduced in House**  
 HJR3 (State Affairs) — Proposes constitutional amendment to provide that all county commissioners will serve four year terms.

**Introduced in Senate**  
 SB1063 (Finance) — Emergency appropriation of \$708,000 for winter feeding of wild elk, antelope and deer. Confirmed By Senate.

**Introduced in House**  
 HJR3 (State Affairs) — Proposes constitutional amendment to provide that all county commissioners will serve four year terms.

**Introduced in Senate**  
 SB1063 (Finance) — Emergency appropriation of \$708,000 for winter feeding of wild elk, antelope and deer. Confirmed By Senate.

**Introduced in House**  
 HJR3 (State Affairs) — Proposes constitutional amendment to provide that all county commissioners will serve four year terms.

**Introduced in Senate**  
 SB1063 (Finance) — Emergency appropriation of \$708,000 for winter feeding of wild elk, antelope and deer. Confirmed By Senate.

**Introduced in House**  
 HJR3 (State Affairs) — Proposes constitutional amendment to provide that all county commissioners will serve four year terms.

**Introduced in Senate**  
 SB1063 (Finance) — Emergency appropriation of \$708,000 for winter feeding of wild elk, antelope and deer. Confirmed By Senate.

**Introduced in House**  
 HJR3 (State Affairs) — Proposes constitutional amendment to provide that all county commissioners will serve four year terms.

**Introduced in Senate**  
 SB1063 (Finance) — Emergency appropriation of \$708,000 for winter feeding of wild elk, antelope and deer. Confirmed By Senate.

**Introduced in House**  
 HJR3 (State Affairs) — Proposes constitutional amendment to provide that all county commissioners will serve four year terms.

**Introduced in Senate**  
 SB1063 (Finance) — Emergency appropriation of \$708,000 for winter feeding of wild elk, antelope and deer. Confirmed By Senate.

**Introduced in House**  
 HJR3 (State Affairs) — Proposes constitutional amendment to provide that all county commissioners will serve four year terms.

**Introduced in Senate**  
 SB1063 (Finance) — Emergency appropriation of \$708,000 for winter feeding of wild elk, antelope and deer. Confirmed By Senate.

**Introduced in House**  
 HJR3 (State Affairs) — Proposes constitutional amendment to provide that all county commissioners will serve four year terms.

**Introduced in Senate**  
 SB1063 (Finance) — Emergency appropriation of \$708,000 for winter feeding of wild elk, antelope and deer. Confirmed By Senate.

**Introduced in House**  
 HJR3 (State Affairs) — Proposes constitutional amendment to provide that all county commissioners will serve four year terms.

**Introduced in Senate**  
 SB1063 (Finance) — Emergency appropriation of \$708,000 for winter feeding of wild elk, antelope and deer. Confirmed By Senate.

**Introduced in House**  
 HJR3 (State Affairs) — Proposes constitutional amendment to provide that all county commissioners will serve four year terms.

**Introduced in Senate**  
 SB1063 (Finance) — Emergency appropriation of \$708,000 for winter feeding of wild elk, antelope and deer. Confirmed By Senate.

**Introduced in House**  
 HJR3 (State Affairs) — Proposes constitutional amendment to provide that all county commissioners will serve four year terms.

**Introduced in Senate**  
 SB1063 (Finance) — Emergency appropriation of \$708,000 for winter feeding of wild elk, antelope and deer. Confirmed By Senate.

**Introduced in House**  
 HJR3 (State Affairs) — Proposes constitutional amendment to provide that all county commissioners will serve four year terms.

**Introduced in Senate**  
 SB1063 (Finance) — Emergency appropriation of \$708,000 for winter feeding of wild elk, antelope and deer. Confirmed By Senate.

**Introduced in House**  
 HJR3 (State Affairs) — Proposes constitutional amendment to provide that all county commissioners will serve four year terms.

**Introduced in Senate**  
 SB1063 (Finance) — Emergency appropriation of \$708,000 for winter feeding of wild elk, antelope and deer. Confirmed By Senate.

**Introduced in House**  
 HJR3 (State Affairs) — Proposes constitutional amendment to provide that all county commissioners will serve four year terms.

# House considers U.S. 95 improvement bill

**BOISE (AP)** — Designating U.S. 95 should be at least three lanes along 95, the major north-south artery in Idaho, a special primary highway would raise its status to near that of an interstate, according to a bill introduced in the Idaho House.

"Serious dollars are being lost to the state" because the highway is poor, said Joan Pasco, of the Lewis and Clark Chamber of Commerce.

Ms. Pasco said Thursday the road

wherever possible.

The Boise-Lewis trip should be "four hours, easy," she said. It now takes five hours in good conditions.

Ms. Pasco suggested the improvements would result if Congress goes along with the memorial introduced by the House Transportation and Defense Committee.

Ms. Pasco said Thursday the road

wherever possible.

The Boise-Lewis trip should be "four hours, easy," she said. It now takes five hours in good conditions.

Ms. Pasco suggested the improvements would result if Congress goes along with the memorial introduced by the House Transportation and Defense Committee.

Ms. Pasco said Thursday the road

wherever possible.

The Boise-Lewis trip should be "four hours, easy," she said. It now takes five hours in good conditions.

Ms. Pasco suggested the improvements would result if Congress goes along with the memorial introduced by the House Transportation and Defense Committee.

Ms. Pasco said Thursday the road

wherever possible.

The Boise-Lewis trip should be "four hours, easy," she said. It now takes five hours in good conditions.

Ms. Pasco suggested the improvements would result if Congress goes along with the memorial introduced by the House Transportation and Defense Committee.

Ms. Pasco said Thursday the road

wherever possible.

The Boise-Lewis trip should be "four hours, easy," she said. It now takes five hours in good conditions.

Ms. Pasco suggested the improvements would result if Congress goes along with the memorial introduced by the House Transportation and Defense Committee.

Ms. Pasco said Thursday the road

wherever possible.

The Boise-Lewis trip should be "four hours, easy," she said. It now takes five hours in good conditions.

Ms. Pasco suggested the improvements would result if Congress goes along with the memorial introduced by the House Transportation and Defense Committee.

Ms. Pasco said Thursday the road

wherever possible.

The Boise-Lewis trip should be "four hours, easy," she said. It now takes five hours in good conditions.

Ms. Pasco suggested the improvements would result if Congress goes along with the memorial introduced by the House Transportation and Defense Committee.

Ms. Pasco said Thursday the road

wherever possible.

The Boise-Lewis trip should be "four hours, easy," she said. It now takes five hours in good conditions.

Ms. Pasco suggested the improvements would result if Congress goes along with the memorial introduced by the House Transportation and Defense Committee.

Ms. Pasco said Thursday the road

wherever possible.

The Boise-Lewis trip should be "four hours, easy," she said. It now takes five hours in good conditions.

Ms. Pasco suggested the improvements would result if Congress goes along with the memorial introduced by the House Transportation and Defense Committee.

Ms. Pasco said Thursday the road

wherever possible.

**PILOT SHORTAGE**  
 Start Your Flying Career NOW IN JEROME  
 Call BURLEY AVIATION 678-2254

**CORRECTION NOTICE**  
 Sears regrets to inform you of a quality problem in the circular effective February 5. The #34953 cordless phone featured will not be available for sale due to a quality problem. When production merchandise is discovered to not meet Sears high quality standards we cannot allow it to be sold. We regret any inconvenience this may have caused.  
 Sears, Roebuck & Co.

**QUALITY**  
 We Buy It And So Should You...  
 Broyhill Furniture at Claude Brown's Furniture

**It's Levi's® Trade-In Time**  
 at *the Paris*  
 Bring in your old jeans (laundered please) for great saving on Levi's® Jeans.

**The Men's Alley**  
 Men's Pre-Washed Levi's® Jeans  
 In black, grey and white.  
 Regular \$24.99 **\$5.00 Off with Trade In**

**Men's Snow-Washed Levi's® Jeans**  
 In light blue, blue, black and grey.  
 Regular \$36.00 **\$10.00 Off with Trade In**

**The Children's Attic**  
 Children's White-Washed Levi's® Jeans  
 Boys sizes 2T to 4T and 4 to 14.  
 Girls sizes 4 to 6X  
 Regular \$36.00 **\$7.00 Off with Trade In**

501's -701's and Shrink to fit Levi's® Jeans  
 Now **\$16.99**

Children's 302's Levi's® Jeans  
 Now **\$15.99**

*the Paris*

**in the Loft**  
**Green Silk Plants**  
 Chase away the Winter blahs and brighten your home with the life-like, yet care free silk plants.  
 Now **25% Off**  
 Allison Avenue East at Eastland, Twin Falls • 734-8718  
 Monday - Saturday  
 10:00 a.m. to 5:00 p.m. (Closed Sundays)  


# Magic Valley

## Senate panel takes look at INEL oversight plan

By ANNETTE CARY  
Times-News writer

BOISE - The Senate Resources and Environment Committee has found an Idaho National Engineering Laboratory oversight plan it likes.



Idaho  
Legislature  
1989

But members are starting to worry about cooperation from lawmakers with the keys to the bank. Friday, Boise freelance writer and environmentalist Pat Ford presented the committee with a plan calling for the state to do no actual physical monitoring of air or ground quality, but to assume a watchdog role over the federal government.

The state would analyze monitoring done by other agencies, oversee cleanup, negotiate agreements with DOE, analyze new projects for potential problems and then report back to the public and the Legislature.

### Washington wants its own cleanup

By N.S. NORRKENYRD  
Times-News writer

TWIN FALLS - Washington state would like a little of Idaho's action. Washington would like to see a cleanup commitment similar to the agreement between Idaho Gov. Cecil Andrus and Don Ote, the U.S. Department of Energy's operations manager at the Idaho National Engineering Laboratory.

"If it's good enough for Idaho, it's good enough for Washington," said Dick Milne, spokesman for Washington Gov. Booth Gardner. "We would like to see the same commitment."

Thursday Ote agreed the entire department would spend \$456 million over the next five and a half years to clean up transuranic waste stored and buried at INEL. The department agreed to spend \$33.9 million during the current year, \$62 million during 1990 and \$89.9 million during each of the following four years.

After the department discovered that organic solvents had leaked into the Snake River Plain Aquifer and plutonium had migrated down into sediment layers below the site, it put an "action plan" in effect, said Enach Miles, chief of plans and budget at INEL.

Though Washington state is pleased the state of Idaho is making progress, a national solution to the radioactive waste problem is long past due, Milne said. The Energy Department has made agreements with Ohio, Idaho and other states "yet they are unable to meet our needs," he said.

Cleanup at the Hanford Nuclear Reservation from more than 45 years of operations, which includes production of the plutonium for the bomb dropped on Nagasaki during World War II, is estimated to cost about \$46 billion over the next 20 years, Milne said.

"We want a commitment from the

Department to clean up transuranic waste stored and buried at INEL. The department agreed to spend \$33.9 million during the current year, \$62 million during 1990 and \$89.9 million during each of the following four years.

After the department discovered that organic solvents had leaked into the Snake River Plain Aquifer and plutonium had migrated down into sediment layers below the site, it put an "action plan" in effect, said Enach Miles, chief of plans and budget at INEL.

Though Washington state is pleased the state of Idaho is making progress, a national solution to the radioactive waste problem is long past due, Milne said. The Energy Department has made agreements with Ohio, Idaho and other states "yet they are unable to meet our needs," he said.

Cleanup at the Hanford Nuclear Reservation from more than 45 years of operations, which includes production of the plutonium for the bomb dropped on Nagasaki during World War II, is estimated to cost about \$46 billion over the next 20 years, Milne said.

"We want a commitment from the

Ford called his proposal neither pro-nuclear nor anti-nuclear. Indeed, part of his proposal's intent is "to assure INEL's continued positive contribution to national research, development, and security, and to Idaho's society and economy." But his plan also says state residents must be assured that the Snake River Aquifer, which supplies most of the drinking water for the Magic Valley, is not contaminated.

He specifically proposed an "oversight" program, rather than a "monitoring" program. Now several agencies collect air or water samples at the INEL site, including Idaho State University under a federal contract.

The legislative committees, and not necessarily this one, are getting monitoring and oversight mixed up, Ford said.

Rep. Kitty Gurnsey, R-Boise, co-chairman of the Joint Finance and Appropriations Committee, has been critical of spending just over \$200,000 on a state oversight program described in initial plans as enough money to hire six new state monitors.

"I'm sure our committee will look very seriously at it, but it's highly unlikely we'll agree to hire six new people," she said.

"I have the uneasy feeling this is being misinterpreted," said Sen. John Peavey, D-Cary.

See INEL on Page A5

## Project Impact trainer offers help to educators

By JENNIFER KAUF  
Times-News writer

Board Chairman Calvin Lamborn and representatives from Buhl, Pduar, Wendell, Gooding, Twin Falls and Blaine County schools, listened attentively to Blick's musings

TWIN FALLS - A little bit of stress combined with a whole lot of childhood problems equals one "at risk" kid, says a visiting Project Impact trainer.

Add a dash of low self-esteem to the mixture and you can change the recipe's title to "high risk."

"The problem with high-risk kids is they don't see stress as a positive opportunity," said Buzz Blick of the California-based National Training Associates. "They automatically think something awful is going to happen."

"At risk kids turn to drugs and alcohol to relieve the stress that other kids might consider a challenge," Blick said.

That's where Project Impact comes onto the scene.

Blick was in Twin Falls this week for a four-day Valleywide training session for Project Impact, a program in several Magic Valley school districts to identify youngsters who abuse drugs or alcohol.

About 45 teachers and administrators from throughout the Magic Valley, including Twin Falls School

Developmental issues plus situational stress equals at-risk, Blick said. Blick, with the help of his audience, churned out a list of "developmental issues."

Abuse, divorce, neglect, pressure to excel, expectations to succeed, years in trouble and the "adolescent wilderness" that accompanies the maturation process topped the inventory.

"When you have a developmental issue and stick a little bit of stress in their life, the child is at risk for ..."

Again Blick turned to his audience for help.

"Chemical dependency, pregnancy, truancy, suicide, dropping out, running away," members of the audience blurted out.

"For students to be prepared to deal with the stress in their lives, we have to become better, as educators, at giving people life skills," Blick told the school officials.

See IMPACT on Page A5



Buzz Blick outlines problems of dealing with drug, alcohol abuse in discussions with local educators and administrators.

## Commissioners OK hospital budget change without hearing

By KEN ARMSTRONG  
Times-News writer

TWIN FALLS - The Twin Falls County commissioners approved a budget amendment to cover hospital expansion costs Friday despite a request that they first hear public comment.

The amendment allows the Magic Valley Regional Medical Center to spend about \$12 million more than initially budgeted, County Commissioner Marvin Hempleman said.

That money will go primarily toward a cancer treatment center and a Magnetic Resonance Imaging system, a machine that takes pictures of the body's interior without using X-rays.

The amendment will be filed Monday with 5th District Court in Twin Falls, where a judge must also OK the proposal, Hempleman said.

In approving the measure, the county commissioners effectively rejected a request that they schedule a public hearing on the

matter. Kathy Sursely, Idaho Citizens Network county coordinator, mailed her request to the commissioners Monday.

Sursely said Friday that the commissioners did not answer her letter.

"I'm just basically trying to find out what to do next," she said. "They're being very unresponsive."

Hempleman said that people wanting to comment on the amendment can do so to the district judge. However, he was not certain what format would be available for public

testimony. Neither was Sursely. She said she called the District Court Friday, but was told by a clerk that such information could not be provided because it would amount to legal advice.

District Judges Daniel Harbut and Daniel Meehl could not be reached for comment Friday evening.

"We have not decided what our next step will be, but it sounds like the county commissioners are trying to slough it off on the Dis-

trict Court," Sursely said. The commissioners received the amendment request late Friday afternoon and approved it unanimously, Hempleman said. They had discussed it previously, he said.

"I've been part of the project," Hempleman said. "I've had no problems with it. Maybe it's because we've been on the inside of it and have been familiar with the studies."

The hospital requested the amendment be approved without a public hearing. See HOSPITAL on Page A5.

## Magic Valley jobless rate declines, parallels optimism in state

The Times-News and The Associated Press

TWIN FALLS - The Magic Valley jobless rate was more than 1 percent lower in January than it was a year ago.

The seasonally adjusted unemployment rate was 5.6 percent last month, down 1.1 percent from Jan-

uary 1987, and 0.1 percent lower than December, said Lon McDonald, labor analyst with the Job Service in Twin Falls on Friday.

Out of a workforce of 36,950, 31,240 had jobs in January and 2,710 did not.

The Magic Valley figures include Twin Falls, Jerome and Gooding counties.

At the state level, harsh winter weather sent the seasonally adjusted unemployment rate up two notches, but total employment in the state still hit a record high as economic optimism kept the labor force expanding.

The Idaho jobless rate was forecast at 5.6 percent as 27,500 workers were off the job. While higher than

the 5.4 percent rate in December, it was nearly a point and a half lower than the rate of a year ago, marking the 21st straight month the current unemployment rate has run below year-earlier levels.

Inclement weather reduced outdoor activity in lumber and construction, department analysts said. Layoffs at some food processing fac-

ilities and retail outlets also contributed to the increased unemployment.

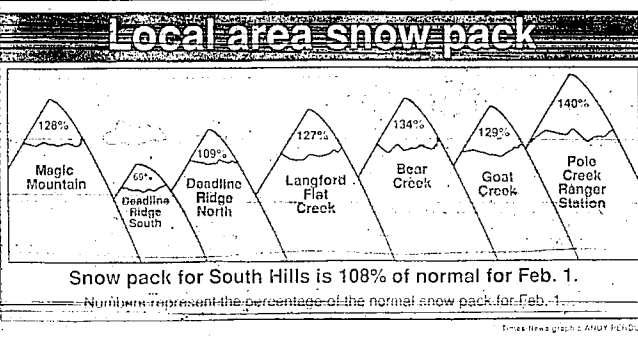
At the same time, however, total employment increased another 1,800 over the month to hit a record 461,200 as booming outdoor recreational activity contributed to the gain.

Nationally, the jobless rate also inched up a notch to 5.4 percent even

though the slowing economy created another 408,000 jobs during the month.

The Idaho rate was the first calculated under a new method that department analysts say provides a more precise picture of the state's job situation. It also prompts a dramatic increase in the number of Idaho

See JOBS on Page A5



## South Hills, Rock Creek snow levels above February normal

The Times-News

TWIN FALLS - Snow levels at the end of February in the South Hills are slightly above normal and the Rock Creek drainage is about 130 percent of normal.

These levels, combined with similarly strong measurements elsewhere in the state, are encouraging, according to Jerry Beard of the U.S. Soil Conservation Service. Most areas of the state have normal or above snow levels. Only the extreme southeast corner, at 85 percent of normal overall, is significantly low.

Snow pack in Blaine County is near normal, with the Big Wood watershed at 89 percent of normal, the Little Wood at 103 percent and Fish Creek at 121 percent.

Low elevations of these drainages have as much snow as the higher elevations, said Gale Roberts of the Hatley Soil Conservation Service.

"Low-elevation snow, following drought conditions such as we have had the last couple of years, can sink into the ground and never show up in the reservoirs if it comes off slowly," Roberts said.

Snow pack in the South Hills ranges from 69 percent of normal at Deadline Ridge North to 125 percent of normal at Magic Mountain for an overall average of 105 percent.

Snow-level recording devices at Bear Creek indicate 134 percent, Goat Creek 129 percent and the Polo Creek Ranger Station 140 percent of normal.

# Jobs

Continued from Page A4  
boans with and without work, and it changes the traditional relationship of Idaho's unemployment rate to the national rate, pushing the state statistic above the national one.  
Since the state's economic boom began in the spring of 1987, the econ-

omy has produced 30,000 new jobs with the bulk of that growth coming in the last eight months.  
At the same time, the total state labor force has also been expanding with an uninterrupted string of monthly increases going back to last July.

Although the new statistical method being used by the department to calculate the state jobless rate make direct comparison's with years prior 1978 impossible, analysts concede the final years of the 1970s saw the strongest labor picture in state history prior to the current boom.  
Regionally, the seasonally adjusted jobless rates for January, December and January 1988 were:  
- Magic Valley, 5.6 percent, 6.7 percent, 6.2 percent.  
- Panhandle, 7.5 percent, 7.7 percent, 9.7 percent.  
- Lewiston area, 5 percent, 5.2 percent, 6.9 percent.  
- Canyon County, 6.7 percent, 6 percent, 9.1 percent.  
- Ada County, 3.7 percent, 3.4 percent, 5.6 percent.  
- Pocatello area, 6 percent, 5.4 percent, 8.1 percent.  
- Idaho Falls area, 4.9 percent, 4.8 percent, 8 percent.

# Panel refuses hospital bill

By ANNETTE CARY  
Times-News writer

BOISE - The House State Affairs Committee refused Friday to consider Rep. Ron Black's bill repealing a hospital restructuring law passed for Magic Valley Regional Medical Center three years ago.  
Black, R-Twin Falls, proposed taking off the books a law written by the hospital allowing restructuring of county hospitals without a vote of the people. Essentially, it allows county hospital boards to give hospitals to non-profit corporations.  
Even though the State Affairs Committee approved the special-interest bill last time around, this time several members said "Twin Falls should solve its own problems without getting the Legislature involved. The vote not to print the repeal was 10-9, with Chairman Pam Henson, the director of political activities for

staining.  
Two years ago Magic Valley Regional Medical Center officials asked for the law, saying the hospital could go broke without it.  
"I really didn't like it (the bill) when they came before us the first time," said Jim Stoicheff, D-Sandpoint. "But they said they were desperate." He didn't want to be responsible for depriving the people of Twin Falls of health care, he said.  
But two years later, instead of going broke, the hospital has more than \$17 million in reserve accounts. In light of the surplus and the bill's unpopularity in the Magic Valley, it should be repealed, Black said. After the bill passed in 1986, a county advisory vote showed 60 percent of voters opposed reorganizing the hospital under a private, non-profit corporation.

# Hospital

Continued from Page A4  
the Idaho Hospital Association, abate its capital expenditures will exceed the \$14 million specified in its 1983 budget. Kent Taylor, the Hospital Board's lawyer, stated in the amendment petition that recently approved capital projects "were for the most part in the developmental stage" when the budget was submitted.  
Those projects will be paid for with the hospital's cash reserves and not from taxes.

"Isn't this a local problem?" asked Rep. Patricia McDermott, D-Boise. "The people of Twin Falls are not being very independent. If they were displeased, wouldn't they have dumped the county commissioners?"  
"I think you should return the bill to sponsor and (the should) work with county commissioners," said Emerson Smock, R-Boise. "Let the county take care of itself."  
Two Magic Valley legislators sit on the committee. Rep. Bruce Newcomb, R-Burley, voted in favor of printing the repeal. Rep. Ralph Peters, R-Jerome, representing the Magic Valley Volteral district, opposed the repeal.

INEL  
Continued from Page A4  
Senate Resources and Environment Committee Chairman Laird N. Kimberly plans to write to the finance committee, explaining the importance of money for independent state oversight at INEL.  
The Energy Department has offered the state \$400,000 to help defray state costs related to the site, but Noh said he plans to tell the committee the state needs to put up the money for the leadership and top management of the program.  
The committee should also give the governor latitude to spend the money, rather than tying it to specific personnel positions, he said.  
Noh also appointed a subcommittee to work Ford's proposal into bill form and report back to the committee next week.

# Learn to recognize signs of frostbite

By LORAYNE ORTON SMITH  
Times-News writer

TWIN FALLS - Although Southern Idaho is only on the fringe of the February Freeze that is chilling the Northwest and Midwest, Magic Valley residents should be aware of the danger of frostbite, says a local physician.  
Dr. Jack Trotter, a Twin Falls pediatrician, says frostbite can be either superficial or deep. Superficial frostbite involves only the skin while deep injury affects tissue, muscle, nerves, bones and even whole limbs.  
It is difficult to recognize the difference between the two, but blistering is common and provides a clue. Blood-filled blisters indicate deep injury and should be treated by a doctor.  
The most common form of superficial frostbite is frostnip, to the cheeks, ears and tip of the nose.  
Keeping these parts of the body covered is the best defense, but once

frostbite occurs the best treatment is rapid rewarming of the affected part, Trotter says.  
But not all methods are safe. Do not use dry, radiant heat such as a campfire or an electric radiator; frostbitten skin is easily burned.  
The best way is to warm the frostbitten area in using body heat, either the victim's or someone else's.  
Place a frostbitten hand or foot inside a warm jacket close to the body. Do not rub the injured area, for the skin can easily be damaged.  
Do not re-warm severe frostbite until the patient is transported to a place where definitive treatment can be started. The greatest damage occurs when a thawed part refreezes and rethaws. This sequence spells disaster, the physician says.  
Less serious frostbites can be soaked in warm water until the color returns, between 30 to 60 minutes.  
Recent research at the University of Alaska research station on Mount McKinley has found aloe vera benefi-

cial for superficial frostbite when applied soon after rewarming, Trotter says. After rewarming, dry the area and protect it from further damage.  
Even though local temperatures are not expected to drop as low as those experienced in Montana and North Dakota, it doesn't take long for bare skin to become frostbitten, says Bill Galkin of the National Weather Service Station in Kimberly.  
Friday morning's temperature of 4 degrees, combined with winds just under 30 mph, created a chill factor of minus 40 degrees, he says.  
The weatherman says that older people and children are especially vulnerable to frostbite and hypothermia, which is a life-threatening general condition of low body temperature.  
Frostbite, in contrast, is defined as localized tissue injury resulting from exposure to low temperatures. A person can have frostbite and not be hypothermic, or be hypothermic and not have frostbite; the physician says.

# Obituaries

**Glady's A. Willis**  
RUPERT - Gladys Alma Willis, 83, of Rupert, died Thursday, Feb. 2, 1983, at the Minidoka Memorial Hospital in Rupert.  
She was born Jan. 10, 1890, in Butte, Mont. She was the daughter of Luke and Alma Trombich-Williams and was raised and educated there. She moved to Rupert in 1906 where she had also attended school. She had since resided there. She married William Earl Ballard May 6, 1917. In Rupert she died in 1976. She was survived by her son, Earl, who died June 26, 1953, in Rupert and her daughter June 18, 1971.  
She was a 61-year member of the Order Of The Eastern Star, a past matron and served as secretary of the Rupert Chapter No. 39 from 1924-31. She also served on the Grand Ad. from 1955 to 1957. She served as Worthy Matron when the Ednah-Oh Chapter No. 77 was instituted in Paul and was a Rebekah member of the No. 27 Evening Star for over 60 years, receiving the decoration of "achivity." She was a member of the Neighbors of Wood Crafts, a charter member of the Pansy Club, a member of the Rupert Grange and a member of the Episcopal Church.  
Surviving here, one stepson, Galen Willis of Seattle, Wash., and one sister, Mildred Williams of Rupert. She was preceded in death by her parents and three sisters.

**William R. Vreeland**  
HAGERMAN - William R. Vreeland, 93, of Hagerman, died Friday, Feb. 3, 1983, at the Veterans Hospital in Boise.  
Demary's Gooding Chapel will announce arrangements.

**Ruby H. Hubert**  
HAGERMAN - Ruby Harmon Hubert, 73, of Hagerman, died Friday, Feb. 3, 1983, at St. Benedict's Family Medical Center in Jerome.  
Funeral arrangements will be announced by Demary's Gooding Chapel.

# Impact

Continued from Page A4  
Tolling kids to "Just Say No" is short-term, Black said. It only works if the kids have the resources to say 'yes' to positive responses to events.  
Black contends it is teachers' and administrators' responsibility to create that broad range of alternative ways kids can deal with the unavoidable stresses.  
He used his own nervousness and the stress he felt at the beginning of his talk as an example.  
"I've learned to relieve stress by talking about it," he explained.  
Black said a peer support system is "absolute key" to helping kids

deal with stress because the kids can ask their peers for advice and help. Some kids see themselves as if they are on their own, Black said.  
But kids also need a viable role model, Black said, someone who serves as a link to the adult world.  
Kids get hooked on drugs and alcohol because they don't know of any other options to relieve stress, Black explained.  
Alcohol is one of the greatest stress relievers man has ever developed," he said.  
"This is not an anti-drug crusade. Drugs haven't been wiped out in the 4,000 years they've been around," he

said. He shrugged his shoulders.  
"We should be interested in the well-being of the student... We should put the emphasis on being proactive instead of reactive," he said.  
To emphasize his points, Black asked each participant to take a "drug holiday" during the training session - giving up nicotine, caffeine and alcohol for the duration.  
"That's what we're asking kids to do - to give up something pleasurable. It's useful to look at our own habits so we know what they are going through," Black said.

# Services

TWIN FALLS - The funeral for Leonard O. Lane, 77, of Twin Falls, who died Tuesday, will be at 2 p.m. Monday at the Reynolds Funeral Chapel. Burial will follow at Sunset Memorial Park.

BELLEVUE - A memorial service for William Ralph "Pat" Patrick, 49, of Bellevue, who died Thursday, will be at 2 p.m. today at Wood River Funeral Chapel in Hagerman.

WENDALL - The funeral for Wendell and a son to Mr. and Mrs. Lee Friesen of Idaho, will be at 11 a.m. today at the Buhl Funeral Chapel. Burial will follow at the Clover Trinity Lutheran Cemetery. Memorials may be made to the Home of the Good Shepherd, care of the Peace Lutheran Church in Filer.

# Darkened

Continued from Page A4  
federal government that they will step up to that commitment.  
"The action plan," replaced by the recent agreement, called for spending \$23.9 million during this year, \$37 million during 1990 and \$38.9 million during 1991. Before the action plan went into effect the department had planned to spend \$9.2 million, \$9.9 million and \$10.5 million during those years respectively.  
The agreement between Andrus and Obe means an increase of \$10 million this year, \$25 million during 1990 and \$31 million during 1991.  
An earlier Energy Department estimate had set the price of cleanup of transuranic and hazardous waste buried at INEL from 1962 to 1970 at

about \$100 million a year with a total of about \$2 billion. The money Idaho and the Energy Department agreed to is designated for cleaning up or moving all transuranic waste at INEL whether buried or stored on asphalt pads, Miles said.  
Some of the boxes and barrels of waste that have been waiting on asphalt pads since the early 1960s for a permanent storage site are nearing the end of their 20-year designed life. The department would like to retrieve and repackage this waste before it too starts leaking, Miles said.  
The increased funding means more money for repackaging stored waste and building additional containment buildings where the repackaged waste would be stored, Miles said. Work also will move for-

ward on study, repackaging and retying stored waste for shipment to the permanent repository the department hopes to open later this year in New Mexico.  
The money also will speed up construction and testing of technology being developed to deal with the buried waste, Miles said.

Unfinished hardwood  
woven seat chairs.  
Only \$39.95 each  
OAK CHEST  
122 Main St.  
Twin Falls, Idaho  
734-9954

# Just Arrived! New Shipment of Girls Guess Jeans



Darkwashed & Whitewashed jeans with zippered ankle.  
Sizes 7-14.  
\$45.00  
The Children's Attic  
124 MAIN AVENUE NORTH • TWIN FALLS • 733-1506

# Hospitals

MAGIC VALLEY REGIONAL MEDICAL CENTER  
Lisa Jensen, Terry Johnson and Mrs. Mark Churchill, all of Paul; Mrs. Barry Brackett of Wendell; Mrs. Lee A. Friesen of Buhl; Beaton Arctburn of Twin Falls; Willie Harrison of Hagerman; Fred Hahsmith of Richfield; and Ronald Croismann of Murtaugh.  
Baby Girl Plinn, Mrs. Keith Gordon, Mrs. Robin Roberts and daughter, and Lee Ann Ruiz, all of Twin Falls; Richard Erwin of Paul; W. Ray Hastings of Gooding; Mrs. Jay Holmstrom and daughter of Embury; Mrs. Jeffrey Miller and daughter of Rupert; and Rick Waggoner of Burley.

CASSIA MEMORIAL  
Admitted  
Lena Beckett, Brandi Oldham and Yolanda Tilley, all of Burley; Judy Baker of Rupert; and Devin Furgerson, Norma Gram and Maury Stacker, all of Rupert.  
Released  
George Anderson, Jo Barton and Jared Loveland, all of Burley; Leona Dunaucha, Sarah Dorris and Mary Welch and baby, all of Hoyburn; Ralph Gibson of Dunc; Bob Smith of Oakley; and Maury Stacker of Rupert.

Deaths  
A baby to Mr. and Mrs. Nylo M. Tilly of Burley.

# Religion

## BYU plans Mormon encyclopedia

**SALT LAKE CITY (AP)** — A New York publishing company has contracted with Brigham Young University to produce a multi-volume encyclopedia of the Mormon Church.

The Encyclopedia of Mormonism, to be published in 1991 by Macmillan Publishing Co., will contain approximately 1,500 articles on church history, people, institutions, culture, scriptures and doctrines of the church.

The million-word project was approved by leaders of The Church of Jesus Christ of Latter-day Saints, which owns BYU. Macmillan is one of the leading publishers of reference works.

A board of editors has been working since late August to determine

which topics should be included in the three- or four-volume work, the first of its scope about the 6.6 million-member church, said Daniel H. Ludlow, director of correlation for the church and former dean of religious education at BYU.

Ludlow said Macmillan hopes to place the reference work in university, high school, municipal, church and personal libraries. He described its primary audience as those interested in learning more about Mormonism from a Mormon perspective.

The encyclopedia should be of special help to new members as they adopt the heritage and perspectives of the church, according to a news release issued by BYU.

# 'New Age' proves a 'hybrid mix'

**NEW YORK (AP)** — On a leather strap around the young woman's neck hangs a plum-sized chunk of quartz.

"It puts a circle of power around you that keeps you feeling protected," said Marybeth Stroubel of Jersey City, N.J., a graphic artist for a Manhattan advertising firm.

The crystal shatters you, she says. "If you know how to get in tune with it, it helps you be more safe and calm when you encounter some unpleasant situation. It's electromagnetic, you know."

Each minute energy pervades the known universe, including every piece of earth, but quartz crystals give off a soothing, guarding aura.

This is among an effusion of the movement's exotic ideas — extra-terrestrial beings, reincarnation, out-of-body experiences, "rebirth tanks," mantras and "channeling" wisdom from the ancients.

"It's a hybrid mix," says Russell Chandler, author of one of the most comprehensive, balanced books yet on the movement, "Understanding the New Age," issued by Word Publishing.

"Some of its kookier fads may have peaked and be passing," he said in an interview. "But the fallout of New Age thinking and its impact is going to be around for a long time."

Many of its subtleties have penetrated the entire culture. It's very attractive and seductive, promising quick spirituality. Its eclectic appeal resonates with a lot of people in our pluralistic society.

He said the movement's key premise — in simple terms, is that everything is God and God is everything and we can become God. That's the point of all the techniques to attain altered states of consciousness.

Asked if such playing God wasn't the biblical wrongdoing of Adam and the Tower of Babel — and of myths of history — Chandler said it was. "It's all right there in the opening chapters of Genesis.

However, he said New Agers don't see God in the Judeo-Christian sense as a supremely personal sovereign who reveals his truth through history, but as an impersonal "It" an energy force that penetrates the universe.

"God is a sort of loose energy ball rattling around the universe," Chandler said. "Of course, you can't derive the Ten Commandments or any ultimate standards from a loose energy ball."

He terms such "moral relativism" a fault of the movement, saying its notion of reincarnation puts a different spin on lying, stealing, adultery, even murder, "since victims are assumed coming back unharmed in another life.

However, Chandler emphasized that the movement is varying and fluid. "You sign no creed. People buy into it at different levels," he said, especially only bits or much of it.

"It has no coherent organization or headquarter that issues pronouncements or any single leadership to bind its members together."

But does have key theoreticians and "hard-core strategists," he said, and is promoted in psy-

chic fairs, seminars, therapies and publications. Its ideas sprinkling TV and movie fare and even business motivational training.

Shirley McClain is kind of the high priestess of the movement," he said, noting that her TV appearances and books made most people aware of it.

His slogan: "You create your own reality."

Chandler, 56, an award-winning religion writer for the Los Angeles Times, took an eight-month leave for researching the movement, interviewing both its critics and fervent followers.

He says it holds that "everything is one and interconnected process, that the cosmos is pure energy," that "all is one," that individuals can attain "higher selves" and "the world gate unified harmony."

"Humanity is defiled, death is denied and ignorance — not evil — is the enemy," Chandler writes of the movement.

He says New Agers believe the world nears a "profound breakthrough" when "the limited, finite Old Order will give way to a glorious, unlimited New Order of peace, prosperity and perfection."

Thousands of New Age activists seek to transform society through New Age precepts," he writes. "As the year 2000 approaches, he adds, "New Age millennial expectations will likely crescendo to fever pitch."

Although seeing new, he says the movement's core ideas stem from 2,500-year-old Buddhism's view of higher consciousness or "true self" and 3,500-year-old Hinduism's view of death-rebirth.

## Church news

**TWIN FALLS** — The Twin Falls Church of the Nazarene will present a film, "Why Youth Say Yes to Sex," the second film of an eight-part Josh McDowell film series, on Tuesday at 7 p.m. The film will present 25 reasons why young people are becoming sexually involved.

Admission is free and child care will be provided. For information, call 733-6610.

## Church services

**AMAZING GRACE FELLOWSHIP** — Twin Falls — Amazing Grace Fellowship, YFCA, 1724 Elizabeth Blvd. 736-0727.

Sunday — Sunday school — 10 a.m.; worship service — 11 a.m.; evening worship — 7 p.m.

Wednesday — Bible Study — 7 p.m.

**CALVARY CHAPEL** — Twin Falls — Calvary Chapel, 739-3323.

Sunday — Morning service and children's Sunday school — 11 a.m.; morning service with a broadcast — 7:30 a.m.; radio station KAWZ 90.5 FM; video series, "How To Manage Your Money," by Larry Burkett — 7 p.m.

Tuesday — Women's fellowship — 7 p.m.

Thursday — Junior and senior high youth groups — 7:30 p.m.; game room; home fellowship — 7:30 p.m. at the homes of Dan Roman, Kevin Schwery, and Carl Grimm in Twin Falls and Chin Creek in Kimberly.

**CHRISTIAN CENTER** — Twin Falls — Christian Center, 181 Main St., 733-2345.

Sunday — Sunday school — 9:30 a.m.; worship service — 10:00 a.m.; children's church — 11:15 a.m.; prayer — 5:30 p.m.; evening worship — 7 p.m.

Wednesday — Youth fellowship — 7 p.m.; home fellowship — 7:30 p.m. Galt McCall's home.

**CHURCH OF CHRIST** — Twin Falls — Church of Christ, 2042 Elder Ave., E., 733-7795.

Sunday — Bible study — 9:30 a.m.; worship service — 10:45 a.m.; Wednesday — Bible study — 7 p.m.

**CHURCH OF CHRIST, SCIENTIST** — Twin Falls — First Church of Christ, Scientist, 100 North Ave. East.

Sunday — Sunday school and church — 11 a.m.; "Beginner's Seminar" — 7:30 p.m.

Monday — Morning prayer — 8 a.m.; evening prayer — 8 p.m.

**ASSEMBLY OF GOD** — Twin Falls — Assembly of God, 735-2851.

Sunday — Sunday school — 9:30 a.m.; morning service — 10 a.m. and 6 p.m.; prayer — 7 p.m.

**TWIN FALLS** — First Assembly of God, 735-2851.

Sunday — Sunday school — 9:30 a.m.; morning service — 10 a.m. and 6 p.m.; prayer — 7 p.m.

**CATHOLIC** — Twin Falls — Immaculate Conception, Rectory — 448-5130.

Sunday — Mass — 8 a.m. and 6 p.m.

Tuesday — Mass — 8 a.m. and 10:15 a.m.; coffee hour at both Masses; CCD grades K-12 — 9 a.m.

Wednesday and Tuesday — Mass — 8 a.m.

Wednesday — Mass — 7:30 a.m.; 12:15 p.m.; and 7:30 p.m. with distribution of Holy Communion.

**CHRISTIAN CENTER** — Twin Falls — Christian Center, 181 Main St., 733-2345.

Sunday — Sunday school — 9:30 a.m.; worship service — 10:00 a.m.; children's church — 11:15 a.m.; prayer — 5:30 p.m.; evening worship — 7 p.m.

Wednesday — Youth fellowship — 7 p.m.; home fellowship — 7:30 p.m. Galt McCall's home.

**CHURCH OF CHRIST** — Twin Falls — Church of Christ, 2042 Elder Ave., E., 733-7795.

Sunday — Bible study — 9:30 a.m.; worship service — 10:45 a.m.; Wednesday — Bible study — 7 p.m.

**CHURCH OF CHRIST, SCIENTIST** — Twin Falls — First Church of Christ, Scientist, 100 North Ave. East.

Sunday — Sunday school and church — 11 a.m.; "Beginner's Seminar" — 7:30 p.m.

Monday — Morning prayer — 8 a.m.; evening prayer — 8 p.m.

**CHURCH OF CHRIST, SCIENTIST** — Twin Falls — First Church of Christ, Scientist, 100 North Ave. East.

Sunday — Sunday school and church — 11 a.m.; "Beginner's Seminar" — 7:30 p.m.

Monday — Morning prayer — 8 a.m.; evening prayer — 8 p.m.

**CHURCH OF CHRIST** — Twin Falls — Church of Christ, 2042 Elder Ave., E., 733-7795.

Sunday — Bible study — 9:30 a.m.; worship service — 10:45 a.m.; Wednesday — Bible study — 7 p.m.

**CHURCH OF CHRIST, SCIENTIST** — Twin Falls — First Church of Christ, Scientist, 100 North Ave. East.

Sunday — Sunday school and church — 11 a.m.; "Beginner's Seminar" — 7:30 p.m.

Monday — Morning prayer — 8 a.m.; evening prayer — 8 p.m.

**CHURCH OF CHRIST, SCIENTIST** — Twin Falls — First Church of Christ, Scientist, 100 North Ave. East.

Sunday — Sunday school and church — 11 a.m.; "Beginner's Seminar" — 7:30 p.m.

Monday — Morning prayer — 8 a.m.; evening prayer — 8 p.m.

**CHURCH OF CHRIST, SCIENTIST** — Twin Falls — First Church of Christ, Scientist, 100 North Ave. East.

Sunday — Sunday school and church — 11 a.m.; "Beginner's Seminar" — 7:30 p.m.

Monday — Morning prayer — 8 a.m.; evening prayer — 8 p.m.

**CHURCH OF CHRIST, SCIENTIST** — Twin Falls — First Church of Christ, Scientist, 100 North Ave. East.

Sunday — Sunday school and church — 11 a.m.; "Beginner's Seminar" — 7:30 p.m.

Monday — Morning prayer — 8 a.m.; evening prayer — 8 p.m.

**CHURCH OF CHRIST, SCIENTIST** — Twin Falls — First Church of Christ, Scientist, 100 North Ave. East.

Sunday — Sunday school and church — 11 a.m.; "Beginner's Seminar" — 7:30 p.m.

Monday — Morning prayer — 8 a.m.; evening prayer — 8 p.m.

**CHURCH OF CHRIST, SCIENTIST** — Twin Falls — First Church of Christ, Scientist, 100 North Ave. East.

Sunday — Sunday school and church — 11 a.m.; "Beginner's Seminar" — 7:30 p.m.

Monday — Morning prayer — 8 a.m.; evening prayer — 8 p.m.

**CHURCH OF CHRIST, SCIENTIST** — Twin Falls — First Church of Christ, Scientist, 100 North Ave. East.

Sunday — Sunday school and church — 11 a.m.; "Beginner's Seminar" — 7:30 p.m.

Monday — Morning prayer — 8 a.m.; evening prayer — 8 p.m.

**CHURCH OF CHRIST, SCIENTIST** — Twin Falls — First Church of Christ, Scientist, 100 North Ave. East.

Sunday — Sunday school and church — 11 a.m.; "Beginner's Seminar" — 7:30 p.m.

Monday — Morning prayer — 8 a.m.; evening prayer — 8 p.m.

**CHURCH OF CHRIST, SCIENTIST** — Twin Falls — First Church of Christ, Scientist, 100 North Ave. East.

Sunday — Sunday school and church — 11 a.m.; "Beginner's Seminar" — 7:30 p.m.

Monday — Morning prayer — 8 a.m.; evening prayer — 8 p.m.

**CHURCH OF CHRIST, SCIENTIST** — Twin Falls — First Church of Christ, Scientist, 100 North Ave. East.

Sunday — Sunday school and church — 11 a.m.; "Beginner's Seminar" — 7:30 p.m.

Monday — Morning prayer — 8 a.m.; evening prayer — 8 p.m.

**CHURCH OF CHRIST, SCIENTIST** — Twin Falls — First Church of Christ, Scientist, 100 North Ave. East.

Sunday — Sunday school and church — 11 a.m.; "Beginner's Seminar" — 7:30 p.m.

Monday — Morning prayer — 8 a.m.; evening prayer — 8 p.m.

**CHURCH OF CHRIST, SCIENTIST** — Twin Falls — First Church of Christ, Scientist, 100 North Ave. East.

Sunday — Sunday school and church — 11 a.m.; "Beginner's Seminar" — 7:30 p.m.

Monday — Morning prayer — 8 a.m.; evening prayer — 8 p.m.

**CHURCH OF CHRIST, SCIENTIST** — Twin Falls — First Church of Christ, Scientist, 100 North Ave. East.

Sunday — Sunday school and church — 11 a.m.; "Beginner's Seminar" — 7:30 p.m.

Monday — Morning prayer — 8 a.m.; evening prayer — 8 p.m.

**CHURCH OF CHRIST, SCIENTIST** — Twin Falls — First Church of Christ, Scientist, 100 North Ave. East.

Sunday — Sunday school and church — 11 a.m.; "Beginner's Seminar" — 7:30 p.m.

Monday — Morning prayer — 8 a.m.; evening prayer — 8 p.m.

**CHURCH OF CHRIST, SCIENTIST** — Twin Falls — First Church of Christ, Scientist, 100 North Ave. East.

Sunday — Sunday school and church — 11 a.m.; "Beginner's Seminar" — 7:30 p.m.

Monday — Morning prayer — 8 a.m.; evening prayer — 8 p.m.

**CHURCH OF CHRIST, SCIENTIST** — Twin Falls — First Church of Christ, Scientist, 100 North Ave. East.

Sunday — Sunday school and church — 11 a.m.; "Beginner's Seminar" — 7:30 p.m.

Monday — Morning prayer — 8 a.m.; evening prayer — 8 p.m.

**CHURCH OF CHRIST, SCIENTIST** — Twin Falls — First Church of Christ, Scientist, 100 North Ave. East.

Sunday — Sunday school and church — 11 a.m.; "Beginner's Seminar" — 7:30 p.m.

Monday — Morning prayer — 8 a.m.; evening prayer — 8 p.m.

**CHURCH OF CHRIST, SCIENTIST** — Twin Falls — First Church of Christ, Scientist, 100 North Ave. East.

Sunday — Sunday school and church — 11 a.m.; "Beginner's Seminar" — 7:30 p.m.

Monday — Morning prayer — 8 a.m.; evening prayer — 8 p.m.

**CHURCH OF CHRIST, SCIENTIST** — Twin Falls — First Church of Christ, Scientist, 100 North Ave. East.

Sunday — Sunday school and church — 11 a.m.; "Beginner's Seminar" — 7:30 p.m.

Monday — Morning prayer — 8 a.m.; evening prayer — 8 p.m.

**CHURCH OF CHRIST, SCIENTIST** — Twin Falls — First Church of Christ, Scientist, 100 North Ave. East.

Sunday — Sunday school and church — 11 a.m.; "Beginner's Seminar" — 7:30 p.m.

Monday — Morning prayer — 8 a.m.; evening prayer — 8 p.m.

**CHURCH OF CHRIST, SCIENTIST** — Twin Falls — First Church of Christ, Scientist, 100 North Ave. East.

Sunday — Sunday school and church — 11 a.m.; "Beginner's Seminar" — 7:30 p.m.

Monday — Morning prayer — 8 a.m.; evening prayer — 8 p.m.

**CHURCH OF CHRIST, SCIENTIST** — Twin Falls — First Church of Christ, Scientist, 100 North Ave. East.

Sunday — Sunday school and church — 11 a.m.; "Beginner's Seminar" — 7:30 p.m.

Monday — Morning prayer — 8 a.m.; evening prayer — 8 p.m.

**CHURCH OF CHRIST, SCIENTIST** — Twin Falls — First Church of Christ, Scientist, 100 North Ave. East.

Sunday — Sunday school and church — 11 a.m.; "Beginner's Seminar" — 7:30 p.m.

Monday — Morning prayer — 8 a.m.; evening prayer — 8 p.m.

**Worship**

Close the day in God's house

at

**Twin Falls Reformed Church**

11:00 a.m. & 7:00 p.m. Worship

9:50 a.m. Sunday School

Grandview Dr. at Pole Line Road



# Judge, lawyers at North trial find some who don't really care

WASHINGTON (AP) — After four days of questioning prospective jurors, the judge and lawyers in Oliver North's Iran-Contra trial are learning that even in this news-lub there are people who don't give a darn about what's happening.

By the end of Friday's session, U.S. District Judge Gerhard A. Gesell had declared 24 women and eight men ignorant enough of North's 1987 congressional testimony to earn them a shot at being on the jury. Twenty didn't pass that muster.

Gesell had wanted a panel of 50 from which the jury of 12 and six alternates will be chosen, maybe next week. But Friday, he reduced that target to 45. The panel will consist only of those who persuade the judge and lawyers they did not watch North on television, hear him on the radio or read about him in newspapers and magazines.

"Have you heard of Colonel North?" Gesell asked a juror's assistant. "No," she said.

"Have you read of Colonel North?" he asked.

She said, no, she only read her horoscope.

"Does the Iran-Contra matter carry any meaning for you?"

No, she said.

But Gesell dismissed the woman when she said she could not find the defendant guilty because "I wasn't there."

A supervisor-of-banquet-cleanup-at-a-posh-White-House-area hotel said "I'm the type of person who, once the news comes on, I switch it off." And when she was asked if she heard North testify on television, she said, "With due respect to Colonel North, I found the conversation boring and walked away."

To that, North lawyer Brendan Sullivan responded: "He doesn't mind at all."

North, at the defense table, smiled. Those chosen Friday included a woman who said she doesn't pay attention to news because it is "depressing."

"I don't like the news," she said. And when her mother, who does, turns it on, she said, "I go to my room and lock my door."

Sullivan pressed her for her recollections of the six days in which North testified before the Iran-Contra investigative committees. At those joint hearings in the summer of 1987, the former Marine lieutenant colonel detailed many of the activities that are now charged to him as crimes.

"He was on TV all day long, on all morning, all afternoon and rerun at night," Sullivan said.

"It made no mad, he was on all the channels," the woman said. "I did not look at it at all. ... My mother probably did. I call her the news media," she said.

# Discovery moves to launch pad - for now

CAPE CANAVERAL, Fla. (AP) — Space shuttle Discovery moved to the launch pad Friday but it may have to be taken back to a hangar if technicians on a tight schedule can't replace three engine pumps in time for a mid-March liftoff.

The five astronauts who will fly the mission read partway to the launch pad with their spaceships, and later swooped low over the pad in three T-38 jets as they headed back

to their training base in Houston. Tip Talone, Discovery's processing director, said March 10 is the earliest possible launch for the planned five-day mission.

Officials had said earlier that if Discovery could not be launched by March 18, it would have to yield the pad to Atlantis, set for liftoff on April 28. But on Friday, NASA officials said they might extend that March 18 deadline a few days by trimming

the potential number of launch days available to Atlantis.

Only one shuttle launch pad is currently available while a second is being refurbished.

Atlantis has priority over Discovery for use of that launch pad because it is to send the Magellan probe to Venus. If Atlantis is not launched April 28 to May 23, Venus will not be in the proper alignment for the project again until 1991.

# Tower vote delay will be short

WASHINGTON (AP) — The top Republican of the Senate Armed Services Committee said Friday new allegations against Defense Secretary-designate John Tower won't delay the panel vote for long.

Congressional sources said the allegations concerned drinking and vomiting.

The committee had been expected to vote Thursday to recommend Senate confirmation of Tower, but that was postponed after the emergence of the new allegations.

Sen. John Warner, R-Va., declined on Friday to say what the information dealt with. But other sources indicated it concerned Tower's personal life, and specifically alcohol and

women. "It's just another chapter in an ongoing investigation," Warner said. "I don't attach any more significance to this chapter than to any other."

He said an FBI report on the subject should reach the committee "on Monday and ... we can proceed to a vote Tuesday or Wednesday."

Tower, meanwhile, sought to dispel any impression of an embattled nominee, meeting for about two hours at his Jefferson Hotel residence with five people likely to be named to deputy posts at the Pentagon.

He later issued a statement, saying the meeting had been scheduled

for a week — and had nothing to do with the proceedings before the Senate Armed Services Committee.

"The discussions centered on the schedule of events for the first six months of the administration, the relationships among various positions within the Pentagon, policy and strategy, and management reform," the statement said.

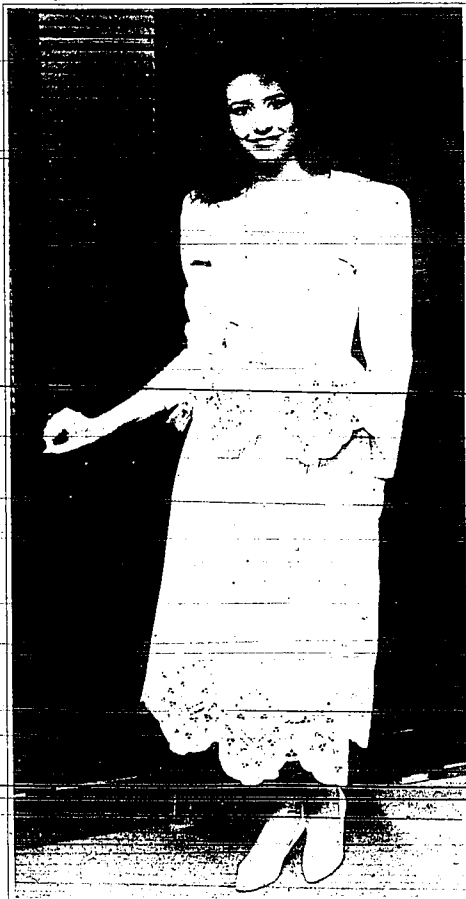
Congressional sources, speaking on condition of anonymity, said new allegations about Tower surfaced after conservative lobbyist Paul Weyrich said in public testimony Tuesday that he had seen Tower publicly inebriated and with women other than his wife on several occasions.

# Deaver drops his appeal

WASHINGTON (AP) — Former White House aide Michael K. Deaver on Friday abandoned his appeal of perjury convictions for lying about his lobbying, saying he wanted to "put this period of my life behind me."

The former top adviser to former President Reagan said in a statement issued by his lawyers that he was dropping the appeal "with the firm belief that I was not guilty of the charges of which I was convicted."

# Embellish Spring



In one of our new dresses from "Nancy Johnson". Beautiful, all cotton dresses and two-piece ensembles with hand-cut embroidery and crocheted lace. From \$165.00 to \$265.00.



A Chocolate Affair  
Tuesday, February 14  
Main Street Treats  
decorative favors

*Mrs. Paris*  
Top-of-the-Stair

No Charge for Alterations

Charge of instant credit on your Paris. Charge. We also Weaving, VISA, American Express, MasterCard and Discover.

174 Main St. N., Twin Falls, ID 208-333-1506 10 am to 6 pm, Sat. 10-5

Before you say "I Do" come see what "We Do"

## BRIDAL FAIR

February 3rd through February 5th  
Fashion Show Saturday 2 P.M.

The perfect place to begin planning the perfect wedding. Meet with these fine wedding specialists who will be on hand to help you plan your perfect wedding.

<p><b>Bridal Shops</b></p> <p>The Cake &amp; Wedding Boutique 2530 Blue Lakes Blvd. N. Twin Falls, Idaho 734-2252</p> <p>Specializing in wedding catering, cakes and musical entertainment and more.</p> <p><b>Wedding and Rental Shop</b> 213 Center Twin Falls, Idaho 733-8838</p> <p>Complete service for wedding and reception. Includes: tables, chairs, linens, decorations, backdrops, cakes, wedding dresses, accessories, music, lighting, videography, floral, tent, drapes, ribbon, stamps.</p> <p><b>Jessies Ceramics &amp; Silks</b> 419 Main St. Ketchikan, Idaho 433-5455</p> <p>Assortment of silk dresses, brides bouquets, mantles and gifts.</p> <p><b>Silk Elegance</b> 226 Oxander N. Twin Falls, Idaho 734-4508</p> <p>Silk designer wedding and all special occasion wedding dress store.</p> <p><b>Prinrose Lane</b> Rte. 1 Lakes Mall Twin Falls, Idaho 734-4432</p> <p>Specializing in silk and organza for the entire wedding and other occasions. Now carrying full line of linens.</p>	<p><b>Formal Wear</b></p> <p>Carol's Bridal Boutique 929 Main Garding, Idaho 934-5527</p> <p>Wedding gowns, formal and prom gowns, custom made to order.</p> <p><b>Maurices</b> Rte. 1 Lakes Mall Twin Falls, Idaho 733-4514</p> <p>Formal wear, brides dresses, accessories, backdrops, cakes, wedding dresses, accessories, music, lighting, videography, floral, tent, drapes, ribbon, stamps.</p> <p><b>The Mode Ltd.</b> Rte. 1 Lakes Mall Twin Falls, Idaho 734-9480</p> <p>Prom and formal dresses, regency for teens, Capri and Silver</p> <p><b>House of Fabrics</b> 1021 Parkview Twin Falls, Idaho 734-1277</p> <p>Extensive stock materials to create your unique wedding wardrobe.</p> <p><b>Kinney Shoes</b> Rte. 1 Lakes Mall Twin Falls, Idaho 734-0477</p> <p>Shoes for the entire wedding party. Professional styling to coordinate your entire wedding wardrobe.</p>	<p><b>Printers Continued</b></p> <p>Everybody's Business Blue Lakes Mall Twin Falls, Idaho 733-5332</p> <p>Full line of all your printing needs for your wedding and other occasions.</p> <p><b>Wedding Portraits</b></p> <p>Charles Reed Photography 1315 9th Ave. E. Twin Falls, Idaho 734-2497</p> <p>Professional photography for weddings, families and individual portraits.</p> <p><b>Kim Critchfield Photography</b> 1403 Embury Road Twin Falls, Idaho 734-5233</p> <p>Professional photography for weddings and families.</p> <p><b>Eaton's Photographic Service</b> 149 Main Ave. E., Suite 213 Twin Falls, Idaho 734-0247</p> <p>Specializing in photographing the wedding and other special occasions.</p> <p><b>Collier's Photography</b> 218 W. 11th Twin Falls, Idaho 678-2596</p> <p>Portrait and group photos.</p> <p><b>Video West</b> Blue Lakes Mall Twin Falls, Idaho 734-9165</p> <p>Capture the entire wedding on film for lasting memories. Video album rentals and services.</p> <p><b>Hair &amp; Beauty Care</b></p> <p><b>Family Beauty Store &amp; Salon</b> Blue Lakes Mall Twin Falls, Idaho 733-4942</p> <p>Beauty products, hair care and more.</p> <p><b>Third Dimension Cuts</b> Blue Lakes Mall Twin Falls, Idaho 733-4733</p> <p>Let our stylists create a perfect look for you and your wedding party.</p>
---	---	--

## Blue Lakes Mall

Shopping Center

**HOURS:**  
Mon.-Fri. 10 A.M. - 9 P.M.  
Saturday 10 A.M. - 6 P.M.  
Sunday Noon - 5 P.M.  
Some Stores Open Extended Hours

**FREE TAX AID through the A.A.R.P. Tax Aid Program**  
Volunteers will be available each Saturday during the tax season beginning February 1 through April 30 to assist elderly and handicapped and low-income persons prepare their tax returns. Volunteers will be on hand from noon to 5 P.M.

# Comics

### THE FAR SIDE

"No kapi... We're in Zulu country, all right!"

### DO ONE FEBRUARY

MARK: THE MESSAGE OF A DO ONE FEBRUARY IS THAT THE TOYED INDUSTRY IS THAT ENOUGH IS ENOUGH!

WITH GOVERNMENT CONSUMERS MORE AWARE OF THE RISKS AND REGULATIONS INVOLVED IN BUYING TOYED, TOYEDS ARE ABLE TO STAND UP FOR THEIR RIGHTS!

SMOKERS ARE BEING DISGRACED BY THE TOYED INDUSTRY'S ASSAULT ON TOYEDS. TOYEDS AREN'T BEING SAVED BY THE TOYED INDUSTRY!

### BEEBLE BABLE

WHERE DO YOU THINK YOU'RE GOING?

TO SEE IF THE MEN GOT BACK FROM MANEUVERS SAFELY

THIS IS GEN. HALTRACK. DID THE MEN GET BACK SAFELY?

### WIZARD OI

WHAT WILL WE DO WHEN WE CAN NO LONGER PERFORM MEANINGFUL WORK?

THERE'S ALWAYS MANAGEMENT

### BORN LOSER

I'M HOME!

WHAT YOU GOT?

ONE DOZEN LONG-STEMMED AMERICAN BEANS.

CHEERUPS, YOU SHOULDN'T HAVE!

OH, DID YOU WANT SOME, TOE?

### FRANK & ERNEST

IRS

WE CERTAINLY APPRECIATE YOUR COOPERATIVE ATTITUDE, MISTER FREEBLE.

### ACROSS

1 Indian prince  
5 Madam  
6 Bovary  
9 Bedouin  
13 Astrifingit  
14 Loop  
16 All  
17 Vincent Lopez theme song  
18 Holden  
21 Gullit's creator  
20 Golf gadget  
21 Fight  
22 Cocktails  
23 Remains  
25 Seer  
26 Swear  
27 Sound of pain  
28 Bliss  
31 Super  
32 San-Diego baseball  
33 In the past  
34 Difficult  
35 Fastener  
36 Loop  
37 Sea bird  
38 Clear  
39 Long walker  
40 Post-grad  
41 Signs  
42 Building additions  
43 Remnants  
44 Statue type  
46 Sound system  
48 Exclamation  
49 from a Klutz  
50 Capture  
53 Dorfan Gray's creator  
55 in a lazy way  
56 Sculler's city needs  
58 Pitcher Ryan  
59 Castle feature  
59 Factual  
60 Voice votes  
61 - of Cleves

3 Captain  
4 "I - Camera"  
5 Take pleasure in  
6 operandi  
7 Lion's share  
8 Neat - pin  
9 Doubtless  
10 Fad  
11 Concelis name creator  
12 Itipots  
13 Indian city  
14 Silly  
15 Cry loudly  
16 Tactile  
15 Enclipped  
26 On to  
27 Eur. conbird  
28 Ocean vocal  
29 Martin Eden's creator  
30 Eyes  
31 Possessive  
32 Take all  
33 Sphincter  
34 Dri

35 Exhausted  
36 Feels poorly  
37 Ocean vocal  
38 Turret word  
39 King or Arkin  
40 Computer unit  
41 Charged atom  
42 Headsets  
43 Yankov  
44

45 Autocrat  
46 Shade of tan  
47 Jar  
48 King or Arkin  
49 Computer unit  
50 Charged atom  
51 Headsets  
52 Yankov

02/04/99

### BLONDIE

MY OUT YOUR BUYING A LOT, CORA

AND WITH GOOD REASON!

WITH SO MUCH CRIME IN THE STREETS

I'D HATE TO BE ROBBED OF ALL MY MONEY

### HAGGAR

I'D LIKE TO TAKE OUT YOUR DAUGHTER

NOT SO FAST!

LET'S START YOU ON SOMETHING SIMPLER FIRST

TAKE OUT THE GARBAGE

### HILLOIS

OOH! I THINK I HURT MY BACK!

I USED TO HAVE A LOT OF BACK TROUBLE

WHAT DID YOU DO?

I FOUND THAT IF YOU LIE DOWN AND COMPLETELY RELAX, IT'LL GO AWAY

HOW LONG DID YOU DO THAT?

ABOUT 15 YEARS

### CALVIN & HOBBES

THESE TELEVISION PROGRAMS ARE SURE ARE ROTTEN.

THERE ISN'T AN OUNCE OF IMAGINATION IN THE WHOLE BUNCH, WHAT BUZZ!

HOW DO THEY THINK IT'S STUPID ENOUGH TO SIT AND WATCH THIS TRASH?

YOU

IF THERE WAS ANYTHING BETTER CH, I'D WATCH THAT.

### GASO

I was very lonely after Hazel passed away!

Then Rhonda Curve came along!

Caught you in a week-period?

She caught me in a week... explanation point!

### PEANUTS

WHAT DO YOU THINK I'LL TAKE TO GET OVER THAT TRAP AND ONTO THE GREEN?

A THREE-WOOD A FOUR-IRON AND A RAKE!

### GARFIELD

WOAAH!

THANKS A LOT FOR WRECKING MY SHOT, MR. TWINKLE TOES!

### HAGGAR

I'D LIKE TO TAKE OUT YOUR DAUGHTER

NOT SO FAST!

LET'S START YOU ON SOMETHING SIMPLER FIRST

TAKE OUT THE GARBAGE

### HILLOIS

OOH! I THINK I HURT MY BACK!

I USED TO HAVE A LOT OF BACK TROUBLE

WHAT DID YOU DO?

I FOUND THAT IF YOU LIE DOWN AND COMPLETELY RELAX, IT'LL GO AWAY

HOW LONG DID YOU DO THAT?

ABOUT 15 YEARS

### CALVIN & HOBBES

THESE TELEVISION PROGRAMS ARE SURE ARE ROTTEN.

THERE ISN'T AN OUNCE OF IMAGINATION IN THE WHOLE BUNCH, WHAT BUZZ!

HOW DO THEY THINK IT'S STUPID ENOUGH TO SIT AND WATCH THIS TRASH?

YOU

IF THERE WAS ANYTHING BETTER CH, I'D WATCH THAT.

### GASO

I was very lonely after Hazel passed away!

Then Rhonda Curve came along!

Caught you in a week-period?

She caught me in a week... explanation point!

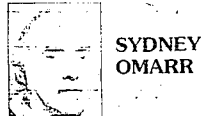
### DENNIS THE MENACE

THE FAMILY CIRCUS

### WINDSOR

"Daddy, were you born before the Silver War?"

"WHO DO WE NEED ALL THIS FURNITURE?"



## ASTROLOGICAL FORECASTS

**IF FEB. 4 IS YOUR BIRTHDAY** delay in luner necessary in connection with home repairs, purchase of luxury item, major domestic adjustment. During this month, you will sign written agreement and funding. Sex or direction is restored, individual close to you will finally say, "I will make more effort." Taurus, Leo, Scorpio persons play important roles on your life. You did not follow family traditions, possibly were separated from one or both parents at relatively early age. November will be memorable.

**AQUARIUS** Jan. 29-Feb. 18: What has been under cover of former beliefs of light. You'll be asked to participate in pioneering project. Emphasis on production, profit, intellectual relationship. Cancer, figures prominently.

**PISCES** Feb. 19-March 20: Work is fulfilled, creative project and romance featured. More people become aware of you, added recognition results. You could be on brink of fame and fortune. Aries, Libra plus info.

**ARIES** March 21-April 19: Individual who says, "Let's celebrate" may be talking one of them. "What's your fat talk, chick, with you in a daze?" Your partner's coming up with. Best sex reputation on films program.

**TAURUS** April 20-May 20: Emphasis on industry, re-possible, strong relationship. Stick to what you know, respect specialty. One someone. Member of opposite sex does care. He could be interested. Study. Arrange for fun.

**GEMINI** May 21-June 20: Both by your presence and good timing will be enjoyed. Plans out of control. Disappointing.

cent than originally anticipated. Libra figures prominently.

**CANCER** June 21-July 22: New agreement necessary in connection with legal agreement, partnership, marital status. Leo native helps you get to heart of matters. Special rule. Avoid heavy lifting. Missing document can now be located.

**LEO** July 23-Aug. 22: By trusting hunch you will be "one step" ahead of competition. Focus on work methods, employment, jobs, people who rely upon your skill, judgment. Decision with recalcitrant family member is featured.

**VIRGO** Aug. 23-Sept. 22: You require at least two opinions regarding travel project. Focus tend to be scattered but you will win important allies. Highlight appearance, charisma, special apparel. Gemini figures prominently.

**LIBRA** Sept. 23-Oct. 22: Check credit record of one who requests financing. Source of details, respect superficial responses. You can elevate yourself to more solid emotional-financial level. Taurus, Scorpio persons play roles.

**SCORPIO** Oct. 23-Nov. 21: Family member spurs delay - win with diplomacy, don't force issues. Check recent notes, important appointment is due. Member of opposite sex involved and can be valuable ally. Virgo is noted.

**SAGITTARIUS** Nov. 22-Dec. 21: Home repairs necessary despite conflict involving budget. Focus on beauty, flowers, music entertainment related to special occasion. Individual previously opposed to now supportive.

**CAPRICORN** Dec. 22-Jan. 19: Judge man's intention on target. Techniques will be strengthened, and the work. To your own satisfaction, employment record system is corrected. Plans for your own well-being are correct.

### L.M. BOYD

What's what

**Windsor invented**  
Is the name "Windsor" British enough for you? King George V thought it would do. His private secretary suggested it in 1917. The Royal Family's real surnames had been Saxe-Coburg and Gotha. But the anti-German sentiment of World War I called for a name change.

**An old Kentucky has more man-made shoreline than any other state.**

**ACCORDION**  
Don't speak ill of those gone before us. Just say it was Philadelphia's Anthony Fasano who in 1856 got the first patent on an accordion, and let it go at that.

**U.S. Border Patrol has a drug-sniffing dog named Barco. Rumor is smugglers have put a \$20,000 bounty on said pup.**

**LOVE IN THE COLD**  
Romance interests you most in hot weather. That's the crux of what scholars say. They learned in a University of Minnesota study. Families, there ever, when it's warm outside, you have greater desire on the opposite sex. They don't get quite like that. They don't get quite like that. They don't get quite like that.

ant than originally anticipated. Libra figures prominently.

**CANCER** June 21-July 22: New agreement necessary in connection with legal agreement, partnership, marital status. Leo native helps you get to heart of matters. Special rule. Avoid heavy lifting. Missing document can now be located.

**LEO** July 23-Aug. 22: By trusting hunch you will be "one step" ahead of competition. Focus on work methods, employment, jobs, people who rely upon your skill, judgment. Decision with recalcitrant family member is featured.

**VIRGO** Aug. 23-Sept. 22: You require at least two opinions regarding travel project. Focus tend to be scattered but you will win important allies. Highlight appearance, charisma, special apparel. Gemini figures prominently.

**LIBRA** Sept. 23-Oct. 22: Check credit record of one who requests financing. Source of details, respect superficial responses. You can elevate yourself to more solid emotional-financial level. Taurus, Scorpio persons play roles.

**SCORPIO** Oct. 23-Nov. 21: Family member spurs delay - win with diplomacy, don't force issues. Check recent notes, important appointment is due. Member of opposite sex involved and can be valuable ally. Virgo is noted.

**SAGITTARIUS** Nov. 22-Dec. 21: Home repairs necessary despite conflict involving budget. Focus on beauty, flowers, music entertainment related to special occasion. Individual previously opposed to now supportive.

**CAPRICORN** Dec. 22-Jan. 19: Judge man's intention on target. Techniques will be strengthened, and the work. To your own satisfaction, employment record system is corrected. Plans for your own well-being are correct.

ant than originally anticipated. Libra figures prominently.

**CANCER** June 21-July 22: New agreement necessary in connection with legal agreement, partnership, marital status. Leo native helps you get to heart of matters. Special rule. Avoid heavy lifting. Missing document can now be located.

**LEO** July 23-Aug. 22: By trusting hunch you will be "one step" ahead of competition. Focus on work methods, employment, jobs, people who rely upon your skill, judgment. Decision with recalcitrant family member is featured.

**VIRGO** Aug. 23-Sept. 22: You require at least two opinions regarding travel project. Focus tend to be scattered but you will win important allies. Highlight appearance, charisma, special apparel. Gemini figures prominently.

**LIBRA** Sept. 23-Oct. 22: Check credit record of one who requests financing. Source of details, respect superficial responses. You can elevate yourself to more solid emotional-financial level. Taurus, Scorpio persons play roles.

**SCORPIO** Oct. 23-Nov. 21: Family member spurs delay - win with diplomacy, don't force issues. Check recent notes, important appointment is due. Member of opposite sex involved and can be valuable ally. Virgo is noted.

**SAGITTARIUS** Nov. 22-Dec. 21: Home repairs necessary despite conflict involving budget. Focus on beauty, flowers, music entertainment related to special occasion. Individual previously opposed to now supportive.

**CAPRICORN** Dec. 22-Jan. 19: Judge man's intention on target. Techniques will be strengthened, and the work. To your own satisfaction, employment record system is corrected. Plans for your own well-being are correct.



**Briefly**

**Soviet convoy leaves Afghan capital**

KABUL, Afghanistan (AP) — A huge Soviet convoy rolled out of Kabul in a westerly direction Friday, and Afghan and Soviet sources said no more than 1,500 Red Army soldiers would remain in Afghanistan once the convoy reached Soviet soil.

The column of trucks and tanks began their 200-mile journey north up the Salang highway under cover of darkness, said the sources, who spoke on condition of anonymity.

The 1,000 to 1,500 Soviet soldiers still in Kabul will guard the city's airport during food airlifts that are to continue for at least a week, the sources said.

**UN plans relief airlift to aid Kabul**

UNITED NATIONS (AP) — U.N. relief officials plan to begin airlifting food and medical supplies into Afghanistan's besieged capital within a few days, U.N. officials said Friday.

U.N. officials in Geneva, speaking by telephone and on condition of anonymity, said Afghan guerrillas had agreed not to attack the relief planes.

In return, the United Nations has pledged to send more relief supplies into regions controlled by the Islamic rebels, who call themselves the mujahideen.

"This is one of many actions of Operation Salaam (the U.N. relief campaign for Afghanistan)," said U.N. spokeswoman Nadia Younes. "It's all in the effort to assist in the reconstruction of Afghanistan."

**Soviets crack down on price hikes**

MOSCOW (AP) — The government announced a crackdown Friday on state-owned businesses that have raised prices and cut the production of inexpensive products.

The action by the Council of Ministers, or cabinet, was another attempt to ease chronic shortages of consumer goods.

The council said it would require businesses to produce a minimum amount of inexpensive consumer goods and would ban price increases for items whose "consumer properties change insignificantly," the Tass news agency reported.

Price increases for "new and fashionable goods" may not exceed 15 percent, the council decided.

**U.S. team off to clean up oil spill**

PUNTA ARENAS, Chile (AP) — U.S. environmental experts boarded a research ship Friday for an emergency mission to clean up a two-mile-long oil slick from a ship that ran aground off a pristine stretch of Antarctic coast.

About 32 tons of equipment flown from the United States was loaded onto the 216-foot Polar Duke from a giant U.S. Air Force C-5 Galaxy cargo plane.

The oil is leaking from the Argentine research and supply ship Bahin Paraiso (Paradise Bay), which is trapped and nearly submerged on shoals in the Bismarck Strait just off the Antarctic peninsula.

**Murdoch's satellite TV net set to go**

LONDON (AP) — Satellite television beams its way to Britain on Sunday with much fanfare but few viewers.

When media magnate Rupert Murdoch launches his four-channel Sky Television network, the number of channels available to most Britons will instantly double.

But the equipment needed to receive the satellite signals in British homes is in short supply and will be for several more weeks, if not months.

Only 5,000 to 20,000 homes will be equipped to tune in on Sunday, giving just a fraction of the 56 million Britons a chance to watch the 6 p.m. premiere.

**China invites Gorbachev to spring summit**

BEIJING (AP) — China on Friday formally invited Soviet President Mikhail S. Gorbachev to come to Beijing for their nations' first summit in 30 years, and the Soviet Union accepted.

The meeting between Gorbachev and Deng Xiaoping will normalize relations that turned hostile in 1960 when their predecessors, Nikita S. Khrushchev and Mao Tse-tung, quarreled over the border and leadership of the world communist movement.

The coming Chinese-Soviet summit will be an event of great significance, the official Xinhua News Agency quoted Premier Li Peng as telling Soviet Foreign Minister Eduard Shevardnadze. He said the nor-

malization of ties will "help promote world peace and stability."

It's official, Soviet Embassy spokesman Vlastislav Dulin said at a news briefing. He said Shevardnadze, who has been in China since Wednesday, will make an announcement about the date Saturday after consulting with Deng.

He said only a general time-frame may be announced, such as late April or mid-May. So far, both sides have said only that the summit should be held in the first half of the year.

Shevardnadze, the first Soviet foreign minister to visit China in 30 years, flew Friday night to Shanghai for his meeting with Deng. Dulin said he had heard Deng was in

Shanghai for medical examinations, but later said he had heard only rumors, nothing official.

Rumors that the 81-year-old Deng is in poor health have frequently circulated in Beijing.

After meeting Deng, Shevardnadze will fly back to Beijing for a news conference before leaving for Pakistan.

The Soviets released few details of Shevardnadze's meetings Friday with his Chinese counterpart, Qian Qichen, and the premier, but they confirmed the issue of Cambodia was discussed for a second day.

The Chinese-Soviet border, over which the two countries fought briefly in 1989, also was discussed, Dulin said. "As far as I understand, he (She-

vardnadze) was satisfied with the talks. He said some problems still have to be resolved and some things are left for Mr. Gorbachev, but he was satisfied in general," Dulin said. "Xinhua, quoted Li as telling Shevardnadze his visit would give impetus to resolving the Cambodian issue and 'remove a major obstacle to the normalization of relations between China and the Soviet Union.'"

China had long refused to normalize ties with Moscow until, among other things, Soviet-aided Vietnam ended its occupation of Cambodia.

Under pressure from the Soviet Union, Vietnam has said it will pull out by September if a settlement can be reached on the makeup of a future government.

**Stroessner leaves Paraguay after coup by military chief**

ASUNCION, Paraguay (AP) — Gen. Andres Rodriguez was sworn in as president Friday after ousting President Alfredo Stroessner in a coup that reportedly left scores dead.

Rodriguez ordered the dictator out of the country he had ruled for 34 years.

Rodriguez, who had been Stroessner's second-in-command in the army and whose daughter is married to Stroessner's son, took the oath of office and then swore in a nine-member Cabinet comprised of seven civilians, an active general and a retired general.

Paraguayans poured into the streets to celebrate the bloody military coup and to gape at damage left by hours of heavy fighting between rebel soldiers and police and troops loyal to Stroessner.

"We're going to construct a true democracy!" shouted Domingo Laino, president of the Authentic Radical Liberal Party, one of several groups that were denied recognition or political participation by Stroessner.

Stroessner, the Western Hemisphere's longest-ruling leader, was given 12 hours to leave Paraguay after Rodriguez seized power.

**Koreans hold talks**

SEOUL, South Korea (AP) — South Korea and North Korea have held secret negotiations recently on improving relations and discussed the possibility of a meeting between their leaders, newspaper reports said Friday.

The reports come two days after the announcement of an unprecedented trade agreement involving North Korea and the South Korean conglomerate Hyundai. The Seoul government said the agreement may pave the way toward national unification after 44 years of rivalry. Local newspapers quoted an unidentified government source as saying the talks covered most major issues between the countries.

**ALL YOU CAN EAT**

**SMORGASBORD**

SATURDAY \$3.65  
5:00-9:00 PM.

SUNDAY SPECIAL  
11:00 A.M. TO 3:00 PM. \$3.95

OPEN 24 HOURS DAILY

DEPOT GRILL & CABOOSE  
733-0710 545 Shoshone St. S.

Gooding Fri Sat Sun  
CINEMA

The Last Tango in Paris  
Daily 7:00  
Saturday 12:30 • 2:00 • 7:00

Gene Hackman Willem Dafoe  
Star Six  
8:00 Only

**Tonight!**

Mail CINEMA

GENE HACKMAN WILLEM DAFOE  
**MISSISSIPPI BURNING**

DAILY 7:00 - 9:20 • Sunday 4:40 - 7:00 - 9:20

Jerome CINEMA

ON SATURDAY AND SUNDAY ALL SHOWINGS FROM 12 P.M. TILL 6 P.M. ALL ADULTS ONLY \$3.50

Working Girl  
Harrison Ford  
Sigourney Weaver  
Melanie Griffith  
DAILY 7:20 - 9:25  
SAT-SUN 1:00 3:10 - 5:15 - 7:20 - 9:25

A JERRY LEVINSON Film  
**RAIN MAN**  
DUSTIN HOFFMAN  
TOM CRUISE  
DAILY 7:00 - 9:30  
SAT-SUN 2:00 - 4:30 - 7:00 - 9:30

JOHN CANDY  
WHOSE HARRY CRUMB  
(PG-13)  
DAILY 7:10 - 9:00  
SAT-SUN 1:40 - 3:30 - 5:20 - 7:10 - 9:00

SCHWARZENEGGER DEVITO  
**TWINS**  
Only their mother can tell them apart.  
DAILY 7:15 - 9:15  
SAT-SUN 1:15 - 3:15 - 5:15 - 7:15 - 9:15

Twin Falls CINEMA

ON SATURDAY AND SUNDAY ALL SHOWINGS FROM 12 P.M. TILL 6 P.M. ALL ADULTS ONLY \$3.50

JOHN CANDY  
NERVES OF STEEL  
BODY OF IRON  
BRAIN OF STONE  
**WHOSE HARRY CRUMB?**

Daily 7:10 - 9:00  
Sat - Sun 1:40 - 3:30 - 5:20 - 7:10 - 9:00 (PG-13)

Edging for a beautiful woman can be murder!

TOM SELLECK is **Her Alibi**  
A Romantic Comedy

Daily 7:20 - 9:15  
Sat - Sun 1:35 - 3:30 - 5:25 - 7:20 - 9:15

SCHWARZENEGGER DEVITO  
**TWINS**  
DAILY 7:15 - 9:15  
SAT-SUN 1:15 - 3:15 - 5:15 PG

BEACHES  
BARBARA HERSHEY  
DAILY 7:00 - 9:25  
SAT-SUN 2:10 - 4:35 - 7:00 - 9:25

A JERRY LEVINSON Film  
**RAIN MAN**  
DUSTIN HOFFMAN  
TOM CRUISE  
DAILY 7:00 - 9:30  
SAT-SUN 2:00 - 4:30 - 7:00 - 9:30

PHYSICAL EVIDENCE  
SHOWS 9:15 ONLY

**Entire Stock of Cold Weather Coats**

Now Reduced

**50%**

Regularly \$122.00 to \$35.00. Save on a warm, Winter coat today! Choose from street length and fingertip length coats in wools, wool blends, down filled and more. Three size 4, twelve size 6, sixteen size 8, twenty size 10, eighteen size 12, twenty size 14, twenty one size 16, seven size 18, and five size 20.

A Chocolate Affair  
Tuesday, February 14  
Main Street Theatre  
TWIN FALLS

*Me Paris*  
Street Level

# U.S. states intention to curtail its red ink

WASHINGTON (AP) — The Bush administration, holding its first international gathering, assured American allies on Friday of the president's commitment to lowering the U.S. budget deficit, participants in the meeting said.

They said discussions also covered Third World debt and huge trade imbalances.

Finance ministers and central bank presidents from Japan, West Germany, Britain, France, Italy and Canada wrapped up two days of closed-door meetings in which the new American administration had its first opportunity to explain its international economic priorities.

Repeatedly during the discussions, Treasury Secretary Nicholas Brady emphasized President Bush's commitment to reducing the U.S. federal budget deficit, participants reported.

French Finance Minister Pierre Berezgony, briefing reporters, said that the other countries viewed the American commitment as "very important." He said that Brady gave the group assurances that the new administration would work closely with Congress to slash the budget deficit by more than \$60 billion in the new fiscal year, which begins Oct. 1.

The deficit, which is expected to reach \$101 billion this year, has long been a source of unhappiness for U.S. allies who blame it for siphoning off capital needed for investment in their own countries.

Brady assured the finance ministers that Bush intended to meet the Gramm-Rudman deficit reduction targets, which call for a deficit of \$100 billion in 1990 declining to zero by 1993. Bush will present his own budget plans before a joint session of Congress next Thursday.

A Canadian official, briefing reporters on the condition that the official's name not be

used, said that there was skepticism about Bush's "flexible freeze" approach to reducing the deficit through spending restraint, without the aid of new taxes.

The Canadian official said that there were doubts about the optimistic economic assumptions underpinning the flexible freeze, especially projections of sharp declines in interest rates.

Officials said that in addition to the U.S. budget deficit, the finance ministers discussed the apparent stall in further improvements in huge world trade imbalances.

## Mosbacher takes over at Commerce

WASHINGTON (AP) — Texas oilman Robert Mosbacher was sworn in as secretary of commerce Friday, pledging to help American businesses compete in the world and to clean up polluted waters and shorelines at home.

Mosbacher said he would promote economic growth and competitiveness by expanding overseas markets with U.S. goods and services while ensuring fair competition through effective enforcement of our trade laws.

He also singled out as a priority the protection of the nation's waters and shores through efforts of his department's National Oceanic and Atmospheric Administration.

"More work can and must be done," he said. "We have been blessed with an abundance of

## Report blames crew error for B-1 crash

WASHINGTON (AP) — The Air Force said Friday it lost one of its new B-1B bombers in a crash last fall because the pilot and co-pilot lost track of their altitude while attempting an instrument landing.

The accident, which occurred Nov. 17 at Ellsworth Air Force Base, S.D., destroyed the \$80 million plane. The four crewmen ejected safely.

The detailed accident report, released by the Strategic Air Command, was unusually direct in citing crew error.

The bomber's pilot, a highly qualified instructor aircraft commander, "allowed the aircraft to descend below the published minimum descent altitude for the approach being flown," and the plane hit a power line and poles more than a half mile from the runway, the report said.

It said the plane's co-pilot failed to advise the pilot he was too low.

Lt. Col. George Peck, a spokesman for SAC, said Friday no disciplinary action had been taken against the crew. He declined to speculate whether any would be.

The aircraft commander was Maj. Thomas C. Skillman of Bellmeade, N.J. His co-pilot that night was Capt. Mck R. Guthals of Los Alamitos, N.M.

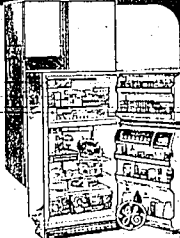
# BLACKER'S AFTER-INVENTORY CLOSE-OUT SPECIALS!

**AMANA 18 cu. ft. REFRIGERATOR**  
1 ONLY - REG. \$799.95 **CLOSE-OUT \$499.95**

**G.E. 18 cu. ft. REFRIGERATOR**  
ALMOND SLIGHTLY DAMAGED  
1 ONLY - REG. \$600.00 **CLOSE-OUT \$549.95**

**G.E. 14 cu. ft. REFRIGERATOR**  
ALMOND 1 ONLY - REG. \$300.00 **CLOSE-OUT \$349.95**

**KELVINATOR 18 cu. ft. REFRIGERATOR**  
ALMOND 1 ONLY - REG. \$600.00 **CLOSE-OUT \$499.95**



**AMANA MICROWAVE**  
Model #M451 TOUCH CONTROL  
2 ONLY - REG. \$219.95 **CLOSE-OUT \$149.95**

**AMANA MICROWAVE**  
Model #M65 TOUCH CONTROL  
2 ONLY - REG. \$259.95 **CLOSE-OUT \$169.95**

**HOTPOINT MICROWAVE**  
Model #964 FULL SIZE  
1 ONLY - REG. \$369.95 **CLOSE-OUT \$229.95**

**HOTPOINT MICROWAVE**  
Model #R83 FULL SIZE  
1 ONLY - REG. \$249.95 **CLOSE-OUT \$159.95**

**G.E. MICROWAVE**  
Model #E1425 FULL SIZE 5 YR. PARTS & LABORS  
1 ONLY - REG. \$349.95 **CLOSE-OUT \$249.95**



**G.E. GAS RANGE**  
ALMOND 1 ONLY - REG. \$569.95 **CLOSE-OUT \$449.95**

**G.E. SCHOOL ELECTRIC RANGES**  
NEW WARRANTY  
3 ONLY - REG. \$569.95 **CLOSE-OUT \$349.95**

**G.E. 15 cu. ft. CHEST FREEZER**  
1 ONLY - REG. \$489.95 **CLOSE-OUT \$299.95**

**KELVINATOR 19 cu. ft. UPRIGHT FREEZER**  
1 ONLY - REG. \$499.95 **CLOSE-OUT \$369.95**

**AIRENS SNOW BLOWER**  
1 ONLY - REG. \$549.95 **CLOSE-OUT \$379.95**



**G.E. DRYER**  
WHITE 1 ONLY - REG. \$429.95 **CLOSE-OUT \$269.95**

**G.E. DRYER**  
GOLD 1 ONLY - REG. \$479.95 **CLOSE-OUT \$349.95**

**G.E. WASHER X-LARGE CAPACITY**  
1 ONLY - REG. \$529.95 **CLOSE-OUT \$389.95**

**G.E. WASHER LARGE CAPACITY**  
1 ONLY - REG. \$529.95 **CLOSE-OUT \$369.95**

**MAYTAG DRYER**  
WHITE 1 ONLY - REG. \$499.95 **CLOSE-OUT \$329.95**

**MAYTAG PORTABLE DISHWASHER**  
WHITE 1 ONLY - REG. \$749.95 **CLOSE-OUT \$499.95**

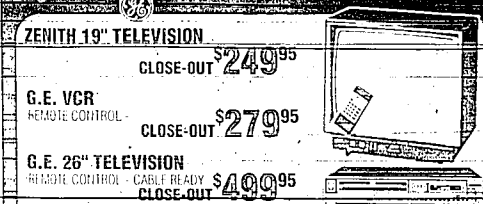
**G.E. BUILT-IN DISHWASHER**  
2 ONLY - REG. \$429.95 **CLOSE-OUT \$279.95**



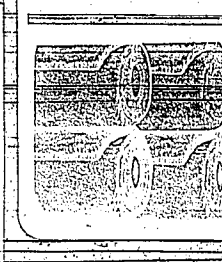
**ZENITH 19" TELEVISION**  
CLOSE-OUT \$249.95

**G.E. VCR**  
REMOTE CONTROL  
CLOSE-OUT \$279.95

**G.E. 26" TELEVISION**  
REMOTE CONTROL CABLE READY  
CLOSE-OUT \$499.95



**STAIN MASTER CARPETS**  
CLOSE-OUT \$9.95 sq. yd.



After taking inventory we have uncovered many items that **MUST** be liquidated from our inventory to make room for new Spring merchandise. These are just a few of those items we uncovered.

**ODD LOVE SEATS**  
MANY STYLES AND COLORS TO CHOOSE FROM  
FROM \$150.00 TO \$400.00

**SWIVEL ROCKER**  
BEIGE NYLON COVER  
**\$99.95**

**WING BACK CHAIR**  
BLUE - REG. \$289.95  
**\$179.95**

**FRANKLIN RECLINER**  
NYLON COVER  
**\$139.95**

**HIGH BACK TRIPLE BACK SOFA**  
WITH INCLINERS - REG. \$899.95  
NOW **\$499.95**

**LAMPS**  
ONE GROUP - VALUES TO \$199.95  
NOW **\$39.95**

**SOFA SLEEPER**  
W/ SERTA INNER SPRING MATTRESS  
FULL SIZE - WAS \$749.95  
NOW **\$449.95**

**DINETTE SET**  
5 PIECE - WAS \$499.95  
**\$199.95**

**WOOD TABLE & CHAIRS**  
5 PIECE, FORMICA TOP - WAS \$1010  
**\$499.95**

**MATCHING CHINA HUTCH**  
WAS \$889.95  
**\$499.95**

## BUY NOW... NO PAYMENTS 'TIL MAY ON APPROVED CREDIT

**ENGLANDER**  
FULL SIZE BOX MATTRESS  
WAS \$349  
NOW **\$149.95**

**DAY BED**  
WHITE W/ BRASS TRIM  
INCLUDES DECK - WAS \$600  
NOW **\$139.95**

**BABY CRIB**  
WAS \$249  
NOW **\$89.95**

**CRIB BUMPER**  
**\$9.95**

## END TABLES & COFFEE TABLES ONE GROUP 40% TO 60% OFF PRICES STARTING AT \$49.95

**FREE DELIVERY OPEN FRIDAY 'TIL 8 PM**

ED & MINE COOK WE SERVE TO SERVE AGAIN

# Blacker APPLIANCE FURNITURE

EVERYTHING FOR THE HOME

223 2ND AVE EAST 736-1804

**MEN'S WINTER CLEARANCE**  
ALL - SWEATERS, COATS & JEAN JACKETS  
**KAY'S KLOSET**  
CLOTHING & ACCESSORIES FOR THE ENTIRE FAMILY  
1704 Addison Ave. East  
LAY-A-WAYS

**WINDOW TREATMENT SALE**  
Kirsch

FOR A LIMITED TIME, SAVE MONEY ON ENERGY-SAVING WINDOW TREATMENTS

- 1" ALUMINUM MINI BLINDS... 50% OFF
- FLOWER WOODS... 40% OFF
- 1" AND 2" WOOD SLAT BLINDS... 40% OFF
- PLEATED SHADES (VERGOLD)... 40% OFF
- UPHOLSTERY... 40% OFF
- BLINDS... 40% OFF
- CUSTOM WINDOW SHADES... 30% OFF

More than 65 models and colors, over 80 new styles, dozens of different fabrics and finishes, many wood-clad finishes and aluminum shades. Kirsch quality.

Professional in Home Decorating Consultations

**Pioneer**  
120 S. Broadway in Buhl 543-7824







# Strong employment report surprises experts

The Associated Press  
WASHINGTON—The nation's jobless rate fell 0.4 percent last month even as the economy created 400,000 new jobs, the government said Friday in a report showing stronger than anticipated early-year strength.

While the report was good news for people seeking work—in all, 700,000 Americans found jobs last month out of 865,000 who began the search—analysts said the economy may be growing too quickly and predicted the Federal Reserve would move to rein it in.

January's unemployment rate was up 0.1 percentage point to 5.4 percent, the Labor Department said. But that masked the job gains and the fact that a record 62.9 percent of working-age Americans were at work.

"It's a much stronger report than we thought," said Davis Wyss, chief economist at Data Resources Inc., a Lexington, Mass., forecasting firm. "It suggests we are going into the first quarter a lot stronger than we thought. The Fed is going to tighten and short-term interest rates will be going up."

Some predicted that action will come next week when the Federal Reserve's Open Market Committee meets to set 1959 targets for growth in the money supply. Tight growth restrictions are expected to brake on economic growth by pushing interest rates upward.

In another sign of robust economic strength as 1959 began, the average manufacturing work week rose by 6 minutes to 41.0 hours. Average factory overtime held steady at 3.9 hours a week.

And, in data showing the pace of wage gains picked up in January, the department said average hourly earnings of nonagricultural workers climbed by 0.6 percent while average weekly earnings rose 1.2 percent.

"It's a quite disturbing spillover into wages of the strong job growth," said Allen Sinai, chief economist of the Boston Co.

Wage increases also put more money in consumers' wallets; the resultant increased purchasing could stymie efforts to reduce the U.S. trade deficit, analysts said.

The government also reported Friday that orders to U.S. factories for manufactured goods surged 4.1 percent in December, the biggest rise in

six months, and were up 9.7 percent for all of 1958, the best showing since 1949.

"Combine the increase in factory orders with the continued generation of jobs and building material pressure and that smacks of anything but a soft landing," Sinai said. "That smacks of a booming economy—one that could get too hot to handle."

The growth in new jobs, as calculated from the department's monthly sampling of households nationwide, was led by activity in the construction and service industries.

Construction added 102,000 jobs, more than analysts had expected even with unseasonably warm weather in most of the country. Retail-trade jobs grew up 135,000; service industries added 75,000 workers; gains of 45,000 were recorded for manufacturing industries and for transportation and public utilities.

The overall January job gain far outpaced the consensus prediction of a 250,000 increase.

The Labor Department said that of the 123.4 million jobs in the civilian labor force last month, 116.7 million had jobs and 6.7 million were seeking employment.

# Stock prices change little despite job growth news

The Dow Jones average of 30 industrial stocks slipped 2.50 to 2,331.25, reducing its gain for the week to 8.39 points.

Advancing issues outnumbered declines by about 6 to 5 in nationwide trading of New York Stock Exchange-listed stocks, including 792 up, 692 down and 518 unchanged.

Volume on the floor of the Big Board came to 172,418 million shares, down from 184,431 million in the previous session.

Nationwide, consolidated volume in NYSE-listed issues, including trades in these stocks on regional exchanges and in the over-the-counter market, totaled 197,115 million shares.

The Labor Department reported Friday morning that payroll employment grew by 488,000 jobs in January, well above advance estimates on Wall Street.

"That evidence of continued strong momentum in economic growth quickly increased expectations of further credit-tightening by the Federal Reserve."

However, traders' fears of higher interest rates apparently were offset to a significant extent by the dollar's rise in foreign exchange after the report was issued.

## Potatoes

CHICAGO (AP)—Major potato markets Feb. 3. (C) Chicago, (M) Minneapolis, (S) St. Louis, (W) Washington, (D) Duluth. (C) Chicago, (M) Minneapolis, (S) St. Louis, (W) Washington, (D) Duluth. (C) Chicago, (M) Minneapolis, (S) St. Louis, (W) Washington, (D) Duluth.

## Livestock futures

CHICAGO (AP)—Futures trading on the Chicago Mercantile Exchange Friday. Open High Low Last. Cattle, 400 lbs., cwt. per lb. 75 75 75 75 75 +8

## Western grain

PORTLAND, Ore. (AP)—Wheat trends for grain and flour are listed Friday for the western wheat market. No. 1 hard winter wheat 5.00

## Most actives

NEW YORK (AP)—A list of the most active New York Stock Exchange issues, including trading volume and price change, is shown below. Volume Last. Chg. Ford 4,610,000 26 1/8 +1/8

## Chicago grain

MINNEAPOLIS (AP)—Wheat futures Friday 11:55 a.m. year ago 197. Strong wheat contracts have changed prices in 1958. Prices up 1/2 cent. No. 1 hard winter wheat 4.90

## Today's stocks

Symbol	Price	Change
Amalgamated	25 1/2	+1/8
Amstar	25 1/2	+1/8
Amphenol	25 1/2	+1/8
Amstar	25 1/2	+1/8
Amphenol	25 1/2	+1/8

## Grain futures

CHICAGO (AP)—Futures trading on the Chicago Board of Trade Friday. Open High Low Last. Wheat 1.70 1.70 1.70 1.70 +1/8

## DJ Range

Symbol	Open	High	Low	Close
Ind. 30	2325 1/2	2334 1/2	2324 1/2	2331 1/2
Ind. 100	100 1/2	101 1/2	100 1/2	101 1/2

## Gold futures

Symbol	Open	High	Low	Close
Gold	100 1/2	101 1/2	100 1/2	101 1/2

## Valley beans

Symbol	Open	High	Low	Close
Beans	1.70	1.70	1.70	1.70

## Valley grains

Symbol	Open	High	Low	Close
Grain	1.70	1.70	1.70	1.70

## Local interest stock quotations

Symbol	Close	Chg.
Albertsons	43	+3/4
Blu Chp. Val. Fnd	5 1/2	M-K
ConAgri	31 1/2	-

## Closing commodity futures

Month	Commodity	High	Low	Close	Change
Feb.	live cattle	75.80	75.05	75.55	+8
Apr.	live cattle	76.90	76.05	76.65	+18
Mar.	feeder cattle	84.75	84.20	84.65	-0.2

## Livestock

Symbol	Open	High	Low	Last
Cattle	75 1/2	75 3/4	75 1/4	75 1/2

# New York Stock Exchange

Symbol	Price	Change
Amalgamated	25 1/2	+1/8
Amstar	25 1/2	+1/8
Amphenol	25 1/2	+1/8
Amstar	25 1/2	+1/8
Amphenol	25 1/2	+1/8

## American Stock Exchange

Symbol	Price	Change
Amalgamated	25 1/2	+1/8
Amstar	25 1/2	+1/8
Amphenol	25 1/2	+1/8
Amstar	25 1/2	+1/8
Amphenol	25 1/2	+1/8

Bush predicts his S&L bailout plan will not be popular

WASHINGTON (AP) — President Bush, quickening the pace of congressional action on the savings and loan crisis, was told by congressional leaders Friday that a rescue plan should include higher industry insurance premiums, but not a deposit freeze.

Bush said that whatever plan his administration presents to Capitol Hill next week "will not be popular." And he said he doubted Congress would have much better.

Bush summoned the leaders to the White House one day before he was to meet with his top aides in a Saturday session at the Camp David, Md., retreat. There he and Sen. Jake Garn, R-Utah, the committee's senior Republican, eventually agreed to by Congress and the administration would include an increase in the premium that savings and loan institutions pay for federal insurance, but no new deposit freeze.

That deposit freeze is not a live option, he said. It was to be begun with Garn said. He was referring to a contemplated new fee of about \$100 on every \$1,000 in deposit in federally insured institutions. The fees would help raise the \$85 billion to \$100 billion that federal regulators say is needed to bail out insolvent thrifts.

Meeting with the congressional leaders, Bush predicted "Whatever we come up with will not be popular, and I expect that whatever you come up with will not be popular. But we've got to get the problem solved."

"There are no easy answers, and no worrying about blame — plenty to go around."

Later, Bush told a White House function of business executives that members of Congress "are not going to agree with everything I propose next week."

White House aides said the administration still had not decided on deposit freezes.

Press Secretary Martin Fitzwater declined even to rule out the proposed fee on deposits.

The plan may become clearer after Bush meets at Camp David with Treasury Secretary Nicholas Brady, Budget Director Richard Darman, and other key aides.

As for Friday's session, Riegle said Bush "did take a lot of notes" but did not reveal many of his own thoughts on the subject.

Riegle said, however, that he felt "we were all moving in the right direction. There is a desire to work out a bipartisan solution."

The House Speaker Jim Wright, D-Texas, and Senate Majority Leader George Mitchell, D-Maine, pledged to Bush their cooperation in seeking such a solution.

"We're here to join with you in trying to find some creative solution to this," Wright said.

Bush told his audience: "You're not being presented here with a stacked deck. We need ideas, and if we're overlooking something, we want to know what it is."

According to members of Congress who've been briefed by Treasury Department officials last week, the administration believes it will take about \$90 billion to resolve the S&L crisis.

The administration told Congress a major portion under study is to raise the money by selling bonds. The problem comes in deciding how to feed the \$7 billion to \$9 billion needed to pay the interest on the borrowing.

A variety of proposals for administrative restructuring are under consideration.

The one that appears to enjoy the most support is making the Federal Savings and Loan Insurance Corp., which guarantees S&L deposits up to \$100,000, independent of its parent agency, the Federal Home Loan Bank Board.

The bank board is charged with promoting affordable home mortgage financing. Critics say this can conflict with the FSILC's mission to promote safe operation of S&Ls.

Potlatch's net income hits \$100 million for 3rd straight year of top earnings

LEWISTON (AP) — Potlatch Corp. broke the \$100 million mark for net income in 1988 and posted a third consecutive year of record earnings.

Richard Madden, chairman of the San Francisco-based company, said on Thursday income was propelled to nine figures primarily by the strong markets for pulp-based products.

Net earnings were \$112.4 million in 1988, compared with \$87.6 million for 1987. Sales in 1988, earnings of \$76.9 million, well above the \$61.4 million of 1987. The new machine began production during the second quarter of 1988.

Earnings for the other pulp-based operations were up 53 percent, from \$87.7 million in 1987 to \$134.6 million for 1988. Those include the pulp, paperboard and packaging group and the Consumer Products Division.

In contrast, earnings in the wood-products group plummeted from \$11 million in 1987 to just \$3.2 million in 1988.

Lumber and plywood prices were virtually flat, and prices for reconstituted panels dropped significantly, Madden said. Reconstituted panels, made at the Cloquet plant, are made of wood chips and used as a substitute for plywood.

In addition, Madden said the new sawmill at Lewiston continues to operate below the company's projections.

The sawmill was shut down for more than eight months in 1987 during a \$38 million renovation project. The new computerized sawmill started up again in January 1988.

The production goal for the new sawmill is 280,000 board feet per shift, said Todd Maddock, Potlatch spokesman at Lewiston. The current range of 200,000 board feet per shift, he said.

Mutual funds

Table listing various mutual funds with columns for fund name, share price, and other financial metrics. Includes funds like New York, Fidelity, and others.

Legals-Announcements-Selected offers

What it means for your ad to be "classified"

The Times-News

active readers

When people read your ad in classified, they're ready to buy and are actively searching the exact item to fill their needs - maybe it's in your ad.

Call Today 733-0626



CLASSIFIED INDEX

Table with columns: Announcements, Selected Offers, Real Estate for Sale, Rentals, Merchandise, Farmers Market, Recreational, Automotive, and Drivers. Each section lists various services and items for sale or hire.

DIAL-A-DATE 1-876-1111

Selected Offers
007 Jobs of Interest
733-2009 professional resume writer/career planner...

ATTENTION
Long-haul solo drivers.
You'll get being paid at least \$0.21 per hour/mile...

Drivers
Experienced truck drivers
needed for long-haul truck drivers with double trailer experience...

THE ACES ON BRIDGE

Dear Mr. Wolff:
When may a prior trick be inspected? Are the laws for duplicate bridge and rubber bridge the same?
ANSWER: The laws for duplicate and rubber bridge are not the same. At duplicate, one may not request inspection of a prior trick once all four cards played to that trick are turned face down...

Dear Mr. Wolff:
I am a member of the Aces on Bridge club. I would like to know if you have any information regarding the club's membership...

LEGAL NOTICE
IN THE UNITED STATES BANKRUPTCY COURT FOR THE DISTRICT OF IDAHO
Case No. 89-00033-KH
JUDICIAL PRESERVING AND OFFICE OF AGENT FOR THE TRUSTEE OF THE FEDERAL COMMODITY LIEN CLAIMANTS

2002 Lost & Found
Lost south of Filer, Friday, 1/24/99. A black and white Bassett hound, Reward. Call 326-4510.
Please help us find our missing dog. Dog is white and black. Dog is unspayed. Dog is friendly. Dog is about 1 year old. Dog is about 15 lbs. Dog is about 12 inches tall. Dog is about 12 inches wide. Dog is about 12 inches deep. Dog is about 12 inches high. Dog is about 12 inches long. Dog is about 12 inches wide. Dog is about 12 inches deep. Dog is about 12 inches high. Dog is about 12 inches long.

Wanted capable person, knowledgeable in shop practices, building, painting, carpentry and machine repair. 436-3721 areas or 436-5876 days. John Remsen.
Wanted: Active, full or part-time staff branch office in Twin Falls, Boise, Pocatello, Blackfoot, Idaho. Great benefits. Competitive salary. Call 1581-1400. Idaho Falls, ID 83403.
Wanted term here in Filer, Idaho. Must be experienced in all phases of gravelly litigation and real estate operation. Letter of application and qualifications to: Box 441, c/o Times News, PO Box 548, Twin Falls, ID 83303.

ALCOHOLICS ANONYMOUS
Edgar Cayce ARE study group seeking members. Call 733-0626.
HOTLINE - 733-0122
A problem is not a problem when shared. Mutual assistance. Call 733-0122.

Major Grain Company
Needs Grain Buyer
Sales experience required. Send resume to: Box 035, P.O. Box 548, Twin Falls, ID. 83303. Inquiries held in strictest confidence.

010 Professional Services
AMERICAN Services
"See others see you."
MP/HV/EQE
Twin Falls 734-6452
Blaine 467-5627
Hampden 467-5627
Hartland 467-5627
Eldon, NV 702-383-3595
Wentworth 702-623-2399
BOOKKEEPING 423-6237
Knife making, sharpening, and polishing. 246 Lois Street, Twin Falls, ID 83303. Call 733-5666 after hours.

ADVERTISE YOUR SERVICE SPECIALTY IN THIS DIRECTORY
Placed under the heading of your choice.
Your ad will reach 22,000 families everyday and the ad will also appear in our classified section today and one of our featured advertisers will help you with your ad. Call 733-0626 for more information.
ADVERTISE YOUR SERVICE SPECIALTY IN THIS DIRECTORY

Major Grain Company
Needs Grain Buyer
Sales experience required. Send resume to: Box 035, P.O. Box 548, Twin Falls, ID. 83303. Inquiries held in strictest confidence.

Pay Schedule:
Number of days Charge per line
1-3 days \$2.50 per line
4-7 days \$4.00 per line
8-15 days \$6.75 per line
16-30 days \$12.00 per line
Mail your order form to: The Times-News Classified Department, P.O. Box 548, Twin Falls, Idaho 83303.



**Real estate-Rentals-Merchandise**

000 - Homes For Sale  
000 - Homes For Sale



**By Owner 1960 Bitterroot Dr.**  
Beautiful 4 bdrm, 2 bath home  
Was \$98,000, reduced even more Now Only \$41,000 down (\$10,000)  
on balance of \$67,000 at 8%  
733-5031, leave message or 733-3899

**Real Estate For Sale**  
032 Buhi/Filler Homes  
CIRCLE THIS AD  
Total real estate services.  
Barker Realtors, 543 4371.

030 Homes For Sale  
\$9900

**IT'S A STEAL!** Noa 1 bdrm home, Noa carpeting and tile, Gas furnace and garage. Good east location. First to see it will call immediately!  
Call Mountain View Realty 734-1189

**HAMLETT REALTY OFFICE** 734-1079  
A nice family home. Total of 5 bdrm, with bsmt, 2 baths, family room and fireplace, sprinkler system, fenced yard. Double attached garage. Call Ed today for appt. Call Mountain View Realty 734-1189

**ATTENTION**  
Fmha buyers! This 3 bedroom 1 1/2 bath home with yours with no money down and low closing costs. To see this home, call Walt or Anna Hoss today. Priced at just \$35,500 it's located east of Twin Falls. 810-88

**GEM STATE REALTY**  
734-0400  
OR TOLL FREE  
1-800-945-6655 ext 1145

BY OWNER: 3 bdrm, 2 bath, in Sweetroot School Dist., \$37,000. Call 734-0586.  
BY OWNER: 4 bedrooms, 3 baths, quality in-level, accumulate loan, low down. Call 734-2455.  
BY OWNER: Great! 4 bdrm of retirement home. Exc NE location. 3 bdrm, large lawn, lot, assam, loan, \$56,500. Call 733-3395.

Cozy 2 bedroom, 1 bath, 2 1/2 acre home with nice view. \$35,000 down & assume 8 1/2% FHA loan. Drive by 375 W. Main St. Call 733-7823. Home of 734-6061 offers.

**DREAM HOME**  
Home of "Basket Fantasy", upon 3500 sq ft, large oak kitchen with island, 4 fireplaces, 5 bdrms, 3 baths, 2 family rooms in a day-lit finished basement, really cozy, really homey, now deck off sun/parlor room, professional landscaping, 4 lots of amenities. Drive by & see at 865 Mo Divo or call 734-4636 or 733-0978.  
Fabulous terrace home. 3 bdrm, 2 bath, 2 1/2 acres. Ace Realty, 733-5217

**Wheat-lex**  
desirable 4 bdrm, 1 bath, 1 car garage, fenced lot & back, nice land, 2 1/2 acre. Willing to look inside, 521 Highland, then call 733-5199, \$39,500 or make offer.

**NO REALTOR FEES**  
or closing costs. 3 bdrm, 2 1/2 bath, full garage, 4 lots, fenced, \$35,500, 449 Park Terrace Dr. 733-8685.  
Ranch-style family, 2600 sq ft, corner lot 4 bdrms, 2 1/2 baths, 2 fireplaces, family room, 2 1/2 acres. Spacious duplex. Owner \$75,000. 423-6123.  
Specialized Owner transferred. Beautiful, top garden course. Will consider all offers. Call 733-5214 after 5pm.

**039 Acreage & Lots**  
By owner, 1.40 acre, Jerome Commercial shop on 184 Highway. 734-0212.  
BY OWNER: mobile home will finance. Call 734-0586.

**COMMERCIAL LOT**  
Excellent lot for building a commercial shop or small business. Only \$12,500. Call Colleen at Three M. Realty for more details. 733-5214 after 5pm.

**ADVERTISE YOUR SERVICE SPECIALTY IN THIS DIRECTORY**

Placed under the heading of your choice!

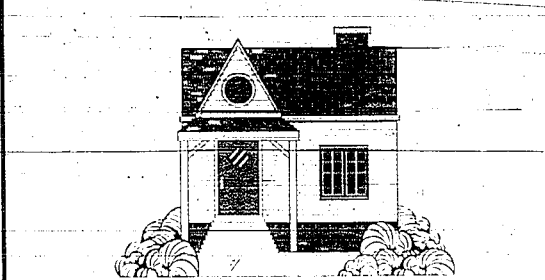
You will reach more families everyday than you can today and one of our friends - Ad-Visors will help you work your ads that will be most effective and bring you the results you are looking for.

733-0391

**BUSINESS SERVICES**  
John's Sharpening Service  
215 Elm St. Flr  
Call 325-4462

Get your name ready to go! - Directory Classifieds - Business Classifieds

**WANTED**



**24 RENTAL HOUSES Cash Reward**

Shirley Thompson of Twin Falls recently rented her house plus got calls from 24 other people wanting to rent it also!

If you have property to rent or sell, turn it into a "Cash Reward" with a Times News Classified Ad: As Shirley found, you get results!

**The Times-News Classifieds • 733-0626**

**038 Acreage & Lots**  
Call Classifieds, 733-0626. We're ready when you are!

**039 Business Property**  
**BUILDING & LOTS**  
11,600 sq ft building with office space, on 2nd Street East, excellent retail location, meets USDA standards. Buy or lease. 1900' bldg. on Addison East, excellent retail location, meets USDA standards. Buy or lease. 774'. Commercial lot, good location on Kimberly Road, older home. Terms. Good - business location on Shoshone & 6th Avenue West, M2 zoning, \$5,000 eq. 1 1/2 - warehouse on 4th Avenue. 183' - 2 bare lots - an older home, commercial or office bldg., 3 floors, downtown location. Make and offer, name your price, rent, 114.

**GOOD AREA**  
2 BEDROOM on main lot, 2 bedrooms in basement, family room, garage, and in good area. \$34,500.  
**CONVERTED HOME TO OFFICE**  
on Main Street. Very nice finish with partially finished basement. Ideal for business, or could be changed back into home or apartments. \$37,500.

**AMERICAN REAL ESTATE & APPRAISAL**  
734-5650  
Doug Walker, Broker  
Main Avenue 734-3882  
Aldo Strong 733-0905  
Dennis Volpert 733-6199  
Lorelei Wills 733-9522

**040 Cemetery Lots**  
2 plots in Sunset Memorial Park, \$500 each. Call (208) 863-7368.

**041 Unfurnished Houses**  
Clean 1 bdrm part, furn, water & san, paid, \$162 & 500 deposit. Call 733-9259. Getting your home ready to rent? Get help from the Service Directory, daily in Times News Classifieds. HANSEN, sell or rent 2 bdrm mobile home, furnished, call 423-5136 or 423-5104.

**042 Vacant Property**  
Rice Inn property, 4 acres, good view, 2 bdrms, pool and well. Call 733-7446.

**045 Mobile Homes**  
14 x 70 ft Maifoto trailer with 13 windows, 2 bdrm, 2 bath, full kitchen, dining room, bathroom, AC, with canopy over patio and carport. Call 733-2930.  
1981 Sahara, 14 x 67, 3 bdrm, 2 bath, lake view. By owner, 1985 Natchua 24x52, like new, 3 bdrms, 2 bath, stove, main tile, fenced yard, \$270 plus eq. Call 326-4256.  
Available Feb. 5th, huge 2 bdrm, 1 3/4 bath, office, bar, pool, new kitchen, water, gas, tankless water heater, sprinker system, dock, lots on the paradise canyon. \$255/month.  
Foster Management 1720 Addison E 733-0739

**051 Unfurnished Houses**  
Clean 2 bdrm, upper part, carpet, \$259 & 734-5377.  
Close smaller 2 bdrm, stove, ref, furnished, wood hook up, suitable for 1 or 2 people. Call 236-N. Washington, \$250 & 1100 dep. 733-8556.  
Small 1 bdrm house, range, stove, 1 1/2 bath, 48' x 118'. Call 734-8511.  
In Kimberly, newly remodeled, 2 bdrm, 1 bath, stove, no refs. Call 733-9259.  
Foster Management 1720 Addison E 733-0739

**052 Furnished Apts. & Duplexes**  
Cute, clean, 1 bdrm, 1 bath, water & sewerage, \$200 plus deposit. Call 733-6816.  
1 bdrm, \$155. 733-4070.  
Barnment apt, utility paid, water, electric, on terrace. Call 733-3543.  
Clean, attractive duplex studio, utility facilities, fenced yard. \$150 deposit. 4236 or 733-8458. 660 Main Avenue North, Mammor 87.  
Man, carpeted, 1 bedroom basement apartment, private entrance, utilities furnished, single adu, no smoking, no pets. Call 733-8564.

**054 Unfurnished Apts. & Duplexes**  
2 bdrms, 1 1/2 bath, double view out of Hagerman, 295sqm. 1st & 2nd dep. Refertments. Call 733-6622.  
All utilities, 14x52, 2 bdrm, 1 bath, stove, fridge, washer, dryer, hook up. No pet. \$245 deposit. Skyline Park. Call 733-4007.  
Carpeted 14x70, 3 bedroom, 2 bath, rolling stone, W/D hook up, gas, no pet. \$499 deposit. Skyline Park. Call 733-4007.  
Very nice carpeted 2 bdrm, upper included, dog friendly, \$150 per month. Call 733-6939.

**055 Roommates Wanted**  
Nice home to share with M/F. 734-8311 after 5.  
One call - we'll do it all! Classifieds, 733-0626.

**056 Warehouse**  
Warehouse space available for rent or lease. 543 Valley Street. Call 733-8042 and view listing.

**052 Furnished Apts. & Duplexes**  
Cute, clean, 1 bdrm, 1 bath, water & sewerage, \$200 plus deposit. Call 733-6816.  
1 bdrm, \$155. 733-4070.  
Barnment apt, utility paid, water, electric, on terrace. Call 733-3543.  
Clean, attractive duplex studio, utility facilities, fenced yard. \$150 deposit. 4236 or 733-8458. 660 Main Avenue North, Mammor 87.  
Man, carpeted, 1 bedroom basement apartment, private entrance, utilities furnished, single adu, no smoking, no pets. Call 733-8564.

**054 Unfurnished Apts. & Duplexes**  
2 bdrms, 1 1/2 bath, double view out of Hagerman, 295sqm. 1st & 2nd dep. Refertments. Call 733-6622.  
All utilities, 14x52, 2 bdrm, 1 bath, stove, fridge, washer, dryer, hook up. No pet. \$245 deposit. Skyline Park. Call 733-4007.  
Carpeted 14x70, 3 bedroom, 2 bath, rolling stone, W/D hook up, gas, no pet. \$499 deposit. Skyline Park. Call 733-4007.  
Very nice carpeted 2 bdrm, upper included, dog friendly, \$150 per month. Call 733-6939.

**055 Roommates Wanted**  
Nice home to share with M/F. 734-8311 after 5.  
One call - we'll do it all! Classifieds, 733-0626.

**057 Rental Mobile Homes**  
4 bdrm, 2 bath, double view out of Hagerman, 295sqm. 1st & 2nd dep. Refertments. Call 733-6622.  
All utilities, 14x52, 2 bdrm, 1 bath, stove, fridge, washer, dryer, hook up. No pet. \$245 deposit. Skyline Park. Call 733-4007.  
Carpeted 14x70, 3 bedroom, 2 bath, rolling stone, W/D hook up, gas, no pet. \$499 deposit. Skyline Park. Call 733-4007.  
Very nice carpeted 2 bdrm, upper included, dog friendly, \$150 per month. Call 733-6939.

**058 Office & Business Rentals**  
124 Buhi/Clark South, 2 1/2 acres, 1800 square foot plus storage and overhead door, \$500 per month. Call 733-8548.  
1500 sq ft retail building, West Main location. Call Charloite.

**Western Property Management**  
733-2355  
438 sq ft 19,000 sq ft Excellent Retail and/or Office Space Available in "The Woodway" The Center of It All! 733-2229.  
Blackfoot, 10 bdrms, 160 sq ft, all utilities included, 1140 a month. Call 733-9300.

**060 Warehouse**  
Warehouse space available for rent or lease. 543 Valley Street. Call 733-8042 and view listing.

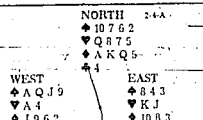
**061 Warehouse**  
Warehouse space available for rent or lease. 543 Valley Street. Call 733-8042 and view listing.

**062 Warehouse**  
Warehouse space available for rent or lease. 543 Valley Street. Call 733-8042 and view listing.

THE ACES ON BRIDGE BOBBY WOLFF

Oh, don't the days seem lank and long, When all goes right and nothing goes wrong...

South had something to grumble at after he had lost a game he thought he had made. He was on the right track to success, he just didn't go far enough.



Vulnerable: Both Dealer: South The bidding: South West North East...

ANSWER: Four hearts. North should have a six-card (or longer) suit, and hearts looks like the safest place to play the game.

Send bridge questions to "THE ACES," P.O. Box 2828, Twin Falls, Idaho 83402. Send answers to "THE ACES," P.O. Box 2828, Twin Falls, Idaho 83402.

079 Appliances: HP's color washing works good \$75. Call 538-2699. Kenmore electric range, 30" good condition, large oven, white, \$90. Call 733-8268.

080 Heating & Air Conditioning: 9 ft insulated pop for wood stove. Call 734-6121. Bi-Centennial woodstove, oven, cooking surfaces & top panel. \$400. 324-2742.

081 Furniture & Carpets: 6 piece new living room set, \$699. BANNERS 733-1421. 9x12 green shag rug in very good condition. \$100. Call 543-4591.

082 Building Materials: All insulations are not equal! Check out the Superior Professional Drywall and you'll be "smug as a bug in a rug" in 1 to 2 1/2 days!

083 Garage Sales: Includes garage sale, many items, collectibles, 40 lbs. of new with new 2 1/2 x 2 1/2. Call 734-6121.

084 Galley Sales: Classified advertising advert used, someone would want to sell. Call 733-0629.

085 Farms For Rent: I would like to rent acreage for beans, hazelton area, post operated local farm. Call 734-5552.

086 Heating & Air Conditioning: 9 ft insulated pop for wood stove. Call 734-6121. Bi-Centennial woodstove, oven, cooking surfaces & top panel. \$400. 324-2742.

087 Hay, Grain & Feed: 100 ton good 2nd and 3rd cutting hay, also 500 bales of alfalfa hay. Call 734-6121.

088 Automobiles: 1974 Chevrolet 4 door, 1500 cc, 1974 Buick Wildcat, 1974 Oldsmobile Delta 88.

089 Pastures For Rent: 30 acre pasture for rent, located near Hazelton area. Call 734-5552.

090 Pastures For Rent: 30 acre pasture for rent, located near Hazelton area. Call 734-5552.

091 Pastures For Rent: 30 acre pasture for rent, located near Hazelton area. Call 734-5552.

092 Building Materials: All insulations are not equal! Check out the Superior Professional Drywall and you'll be "smug as a bug in a rug" in 1 to 2 1/2 days!

093 Hay, Grain & Feed: 100 ton good 2nd and 3rd cutting hay, also 500 bales of alfalfa hay. Call 734-6121.

094 Galley Sales: Classified advertising advert used, someone would want to sell. Call 733-0629.

095 Farms For Rent: I would like to rent acreage for beans, hazelton area, post operated local farm. Call 734-5552.

096 Heating & Air Conditioning: 9 ft insulated pop for wood stove. Call 734-6121. Bi-Centennial woodstove, oven, cooking surfaces & top panel. \$400. 324-2742.

097 Hay, Grain & Feed: 100 ton good 2nd and 3rd cutting hay, also 500 bales of alfalfa hay. Call 734-6121.

098 Automobiles: 1974 Chevrolet 4 door, 1500 cc, 1974 Buick Wildcat, 1974 Oldsmobile Delta 88.

099 Pastures For Rent: 30 acre pasture for rent, located near Hazelton area. Call 734-5552.

108 Sheep/Goats

Wanted: Mature goats, will pick up. Call 934-5880. Monkeys or exotics. After 5.

112 Irrigation: For sale: 2 A & M wheel lines; 6 T. wheels, all 5 m in. 324-5129.

113 Farm & Ranch Supplies: About 110 gal tank, 2 1/2 gal hand pump. \$300. Call 733-7458.

114 Farm Implements: 8N tractor loader, 3 pt leveling blade, loader, fork truck, insulated camper shell. 733-6405.

115 Farm Work Wanted: Hay retrieving, 2 or 3 wide. Call 734-5552.

116 Motor Homes: 1974 Champion 24, class A, 32,000 miles, \$7500. Call 734-6121.

117 Auto Parts: 1974 Buick Apollo, looks good, no rust. Call 734-6121.

118 Automobiles: 1974 Buick Apollo, looks good, no rust. Call 734-6121.

119 Automobiles: 1974 Buick Apollo, looks good, no rust. Call 734-6121.

120 Automobiles: 1974 Buick Apollo, looks good, no rust. Call 734-6121.

121 Bosta & Marine Items: 17 ft aluminum canoe, \$300. Call 734-6121.

122 Sporting Goods: Bk skis, used one time. Call 734-6121.

123 Guns & Rifles: Winchester 12 gauge shot gun, model 120 with shells. Call 733-1316.

124 Snow Vehicles: 1972 Scorpion Singlet III. Call 734-6121.

125 Travel Trailers: 1977 Houdinor, exc. cond. Call 734-6121.

126 Campers & Shells: B.H. Security cab over, heat, gas, electric refrigerator. Call 734-6121.

127 Motor Homes

128 Utility Trailers: 20' Inland 3 axle trailer. Call 734-6121.

129 Automobiles: 1974 Buick Apollo, looks good, no rust. Call 734-6121.

130 Automobiles: 1974 Buick Apollo, looks good, no rust. Call 734-6121.

131 Automobiles: 1974 Buick Apollo, looks good, no rust. Call 734-6121.

132 Auto Parts: 1974 Buick Apollo, looks good, no rust. Call 734-6121.

133 Automobiles: 1974 Buick Apollo, looks good, no rust. Call 734-6121.

134 Automobiles: 1974 Buick Apollo, looks good, no rust. Call 734-6121.

135 Automobiles: 1974 Buick Apollo, looks good, no rust. Call 734-6121.

136 Automobiles: 1974 Buick Apollo, looks good, no rust. Call 734-6121.

137 Automobiles: 1974 Buick Apollo, looks good, no rust. Call 734-6121.

138 Automobiles: 1974 Buick Apollo, looks good, no rust. Call 734-6121.

139 Automobiles: 1974 Buick Apollo, looks good, no rust. Call 734-6121.

140 Heavy Trucks/Semis: 1970 white conventional 200 Cummins, 104,000 actual miles. Call 734-6121.

141 Vans: 1979 Ford van, deluxe interior, very good gas mileage. Call 734-6121.

142 Import/Sports Cars: 1972 Porsche 914, 12,000 actual miles. Call 734-6121.

143 Automobiles: 1974 Buick Apollo, looks good, no rust. Call 734-6121.

144 Automobiles: 1974 Buick Apollo, looks good, no rust. Call 734-6121.

145 Automobiles: 1974 Buick Apollo, looks good, no rust. Call 734-6121.

146 4x4's & ATVs: 1973 1/2 ton 4 x 4, \$1395. Call 734-6121.

145 Auto Dealers

146 4x4's & ATVs: 1973 1/2 ton 4 x 4, \$1395. Call 734-6121.

147 Automobiles: 1974 Buick Apollo, looks good, no rust. Call 734-6121.

148 Automobiles: 1974 Buick Apollo, looks good, no rust. Call 734-6121.

149 Automobiles: 1974 Buick Apollo, looks good, no rust. Call 734-6121.

150 Automobiles: 1974 Buick Apollo, looks good, no rust. Call 734-6121.

151 Automobiles: 1974 Buick Apollo, looks good, no rust. Call 734-6121.

152 Automobiles: 1974 Buick Apollo, looks good, no rust. Call 734-6121.

153 Automobiles: 1974 Buick Apollo, looks good, no rust. Call 734-6121.

154 Automobiles: 1974 Buick Apollo, looks good, no rust. Call 734-6121.

155 Automobiles: 1974 Buick Apollo, looks good, no rust. Call 734-6121.

156 Automobiles: 1974 Buick Apollo, looks good, no rust. Call 734-6121.

157 Automobiles: 1974 Buick Apollo, looks good, no rust. Call 734-6121.

158 Automobiles: 1974 Buick Apollo, looks good, no rust. Call 734-6121.

159 Automobiles: 1974 Buick Apollo, looks good, no rust. Call 734-6121.

160 Automobiles: 1974 Buick Apollo, looks good, no rust. Call 734-6121.

161 Automobiles: 1974 Buick Apollo, looks good, no rust. Call 734-6121.

162 Automobiles: 1974 Buick Apollo, looks good, no rust. Call 734-6121.

163 Automobiles: 1974 Buick Apollo, looks good, no rust. Call 734-6121.

164 Automobiles: 1974 Buick Apollo, looks good, no rust. Call 734-6121.

DICK DEY'S FEBRUARY SUPER VALUE SALE ON ALL USED CARS. 1984 BUICK CENTURY 4 DOOR \$2850. 1987 CHEVY NOVA 4 DOOR \$6950. 1988 ISUZU I MARK 4 DOOR \$6950. 1987 OLDS CUTLASS CIERA SL \$7950. 1986 MERCURY SABLE WAGON \$9450. 1987 PONTIAC BONNEVILLE 4 DOOR \$10,750. 1988 BUICK LeSABRE 4 DOOR \$11,950. 1988 GMC JIMMY 4X4 \$13,950.

THEISEN MOTORS USED CAR SPECIALS. 1988 MERCURY GRAND MARQUIS LS. \$14,588. 1975 Pontiac Safari Wagon \$499. 1977 Toyota Celica \$1688. 1979 Honda Accord \$1788. 1980 Dodge D50 Pickup \$2488. 1977 Chrysler Cordoba \$599. 1980 Pontiac Gran Lemans \$1588.

1989 OLDS CUTLASS SUPREME. V-6, Auto, Air, and Much More. Was \$16,769. NOW ONLY \$14,591. FREE GAS also includes 88's.

097 Hay, Grain & Feed: 100 ton good 2nd and 3rd cutting hay, also 500 bales of alfalfa hay. Call 734-6121.

098 Automobiles: 1974 Buick Apollo, looks good, no rust. Call 734-6121.

099 Pastures For Rent: 30 acre pasture for rent, located near Hazelton area. Call 734-5552.

100 Automobiles: 1974 Buick Apollo, looks good, no rust. Call 734-6121.

101 Automobiles: 1974 Buick Apollo, looks good, no rust. Call 734-6121.


102 Automobiles: 1974 Buick Apollo, looks good, no rust. Call 734-6121.

# Automotive-Automotive-Automotive

148-175

<p>15 - Auto Dealers</p> <p>1981 OLDSMOBILE OMEGA 4 Door, Auto, Air \$1395</p> <p>1980 FORD FAIRMONT 4 Door, Auto, Air, Cassette \$1695</p> <p>1980 PONTIAC PHOENIX 4 Door, Auto \$1795</p> <p>1979 PONTIAC GRAND PRIX 2 Tone Paint, Sharp \$1895</p> <p>1982 FORD ESCORT WAGON 4 Door, Leather \$2495</p> <p>1979 BUICK REGAL 2 Door \$2495</p> <p>1980 FORD THUNDERBIRD Hard Metallic, With Sun Roof \$2495</p> <p>1983 CHEVROLET CELEBRITY \$2980</p> <p>1983 CHEVROLET CAVALIER 4 Door, Auto, Air \$3195</p> <p>1982 FORD MUSTANG 4 Door, Car \$3995</p> <p>1985 MERCURY TOPAZ 4 Door, Auto, Air \$3995</p> <p>1985 NISSAN SENTRA 4 Door, Car, Cassette \$4890</p> <p>1984 TOYOTA CAMRY LE \$4980</p> <p>1984 TOYOTA TERCEL SRS 4X4 \$4995</p> <p>1985 CHRYSLER LASER \$6995</p> <p>1987 CHEVROLET CELEBRITY Cassette, Leather \$7880</p> <p>1987 FORD TAURUS \$8980</p> <p>1988 OLDSMOBILE FIRENZA 4 Door, Like New, Auto, Air \$8990</p> <p>1987 BUICK LESABRE 2 Door, Well Equipped \$9995</p> <p>1987 NISSAN STANZA XE WAGON \$9995</p> <p>1988 HONDA CARAVAN \$12,875</p>	<p>175 - Auto Dealers</p> <p>1937 Chevy Master, almost rod project, Chrysler racing gear, \$1600 cash trade, or will finance. 324-2854.</p> <p>1969 Camaro RS, 350 4 speed, new tires, \$2000.00 for, 324-2142 or 324-3904.</p> <p>1969 Chevy El Camino, new paint, rebuilt 350, excellent condition, \$2000 firm. Days, 934-4461, evenings, 934- 4913, ask for Mickey.</p> <p>Asphalt/Alid units 27/89 on a 1968 automatic convertible Mustang. Contact Moezin at 678-5076.</p>	<p>148 - Antique Autos</p> <p>1975 red Chevy Vega wagon, runs, needs brakes \$400 best offer. Must sell! 733-4124 (leave msg)</p> <p>1988 Chevy Sprint, 1700 miles, 2 cylinder, 5 spd, \$520. 734-4352 for details.</p> <p>68 Suburban. Runs, needs work. \$500. Call 543-9951</p>	<p>158 - Autos-Chevrolet</p> <p>1980 Dodge Atlas, 4 door, auto, AC, PB, PS, AM/FM radio, great shape. \$4295. Call 543-9784, 733-7631.</p>	<p>142 - Autos-Ford</p> <p>76 Ford Pinto wagon, runs 2000, 3500hp, 536-8293.</p> <p>1983 T-Bird turbo, 5 speed, excellent condition. Call 734-6428 after 5 pm.</p> <p>1984 Escort, excellent condi- tion, AM/FM, cassette, \$2750. Call 324-5057.</p> <p>1984 Ford Tempo, 4 door, 5 speed transmission, new battery, cruise, good mile- age, \$3300 firm. Call 543- 5935 or 537-6693.</p> <p>1987 Escort wagon, 4 door, auto, AM/FM, cassette, \$5500. Call 788-5197.</p>	<p>155 - Autos- Mercury &amp; Lincoln</p> <p>1976 Mercury Bobcat for sale as is or part out. Call 734-2995.</p> <p>1978 Mercury Comet, runs, 4 new B&amp;O steel belted ra- dials, \$2000. Call 536-9509.</p> <p>1979 Bobcat, engine needs 190, \$150. Call 733-9339.</p> <p>BUDGET RENT A CAR 1987 Topaz, 4 dr, AC, AT, PS, PB, air cruise, AM/FM, approx 23,000 mi. \$7,995. Call Roger 383-3090 or 459-8314 after 6 pm.</p>	<p>168 - Auto-Oldsmobile</p> <p>1967 Datsun 88, 4 door, runs, good tires, body ok, conso- ler, \$200 or best offer. Call 734-4460.</p> <p>1983 Oldsmobile Brougham, PS, AC, V-6, cruise, AM/FM cas- sette, blue inside and out, \$2495, 736-7210 after 5 pm. Call 543-6262.</p> <p>BUDGET RENT A CAR 1988 Delta 88 Royale Brougham, 4 dr, loaded, 4 to choose from \$12,995 each. Call Roger 383-3090 or 459-8314 after 6 pm.</p> <p>Think classified when you place your ad in classified. Call 733-0626.</p>	<p>172 - Autos-Pontiac</p> <p>1981 Gran Prix, white, all power, AM/FM stereo, di- eal, \$2800. Call 536-2035 or 789-9576.</p> <p>1986 Pontiac 6000 LE, great car, great gas mileage, V-6 with AT, power, AC, 111, cruise, 49,000 miles. \$6,500. Call 543-6262.</p> <p>1987 Firebird formula 350, low miles, loaded, exc cond. Take over price. 734-7534.</p> <p>1988 Pontiac Grand AM, loaded, 10,000 miles, \$1500. A take over payment. Call 423-6801 even.</p>	<p>174 - Autos-Oldsmobile</p> <p>1976 Datsun 810 station wagon, \$950. Call 733-9492 after 5 pm.</p> <p>175 - Auto Dealers</p> <p>WE PAY CASH FOR USED CARS</p> <p>WILLS MOTOR CO.</p> <p>classified advertising didn't exist, someone would invent it. Call 733-0626.</p>
--	--	--	--	---	--	--	--	--

Thankyou  
Dear, For That  
Beautiful  
Used Car From  
Wills Motor Co.



**CARS**

1981 OLDSMOBILE OMEGA  
4 Door, Auto, Air  
\$1395

1980 FORD FAIRMONT  
4 Door, Auto, Air, Cassette  
\$1695

1980 PONTIAC PHOENIX  
4 Door, Auto  
\$1795

1979 PONTIAC GRAND PRIX  
2 Tone Paint, Sharp  
\$1895

1982 FORD ESCORT WAGON  
4 Door, Leather  
\$2495

1979 BUICK REGAL  
2 Door  
\$2495

1980 FORD THUNDERBIRD  
Hard Metallic, With Sun Roof  
\$2495

1983 CHEVROLET CELEBRITY  
\$2980

1983 CHEVROLET CAVALIER  
4 Door, Auto, Air  
\$3195

1982 FORD MUSTANG  
4 Door, Car  
\$3995

1985 MERCURY TOPAZ  
4 Door, Auto, Air  
\$3995

1985 NISSAN SENTRA  
4 Door, Car, Cassette  
\$4890

1984 TOYOTA CAMRY LE  
\$4980

1984 TOYOTA TERCEL SRS 4X4  
\$4995

1985 CHRYSLER LASER  
\$6995

1987 CHEVROLET CELEBRITY  
Cassette, Leather  
\$7880

1987 FORD TAURUS  
\$8980

1988 OLDSMOBILE FIRENZA  
4 Door, Like New, Auto, Air  
\$8990

1987 BUICK LESABRE  
2 Door, Well Equipped  
\$9995

1987 NISSAN STANZA XE WAGON  
\$9995

1988 HONDA CARAVAN  
\$12,875

**TRUCKS AND 4x4's**

1987 FORD 1/2 TON PICKUP  
\$895

1978 CHEVROLET C-10 PICKUP  
Auto Air, Special Tires & Wheel  
\$2495

1970 FORD PICKUP / CAMPER  
\$2980

1981 AMC EAGLE 4X4  
\$2990

1976 JEEP WAGONEER  
4 Door, 4 Speed, Top  
\$3495

1984 FORD RANGER PICKUP  
\$4295

1980 FORD BRONCO  
\$4650

1982 JEEP CHEROKEE  
Leads, Loaded  
\$4795

1985 NISSAN PICKUP  
With Steel Sharp, Power Steering  
\$4890

1985 TOYOTA PICKUP W/ SHELL  
Leads, Top Car  
\$5995

1986 TOYOTA TERCEL 4X4  
Station Wagon  
\$6890

1984 NISSAN PICKUP 4X4  
\$6890

1981 GMC 1/2 TON PICKUP 4X4  
Leads, Top Car  
\$6995

1987 FORD TEMPO 4X4  
Sharp Car  
\$7950

1986 NISSAN 4X4 PICKUP  
\$8880

1987 JEEP WRANGLER  
Hard Top, 6 Cylinder  
\$9895

1985 CHEVY S-10 BLAZER 4X4  
Cassette  
\$9980

1987 FORD F-150 PICKUP 4X4  
2 Tone Paint, New  
\$10,280

1986 FORD BRONCO II  
V-6, 2 Tone Paint, Air  
\$10,470

WILLS MOTOR COMPANY  
3150 S. MAIN ST.  
TOYOTA - Jeep Eagle 733-2891

**CARS & TRUCKS  
PRICED TO SELL**

1988 DODGE RAIDER T1465.....\$11,695

1984 CHEVROLET 1/2 TON T1477.....\$6,995

1987 MAZDA P.U. T3574TA.....\$7,995

1986 CHEVROLET S-10 T1506TC.....\$7,695

1985 FORD F-150 T1500.....\$8,695

1984 CHEVY S-10 BLAZER T1537TA.....\$8,795

1985 FORD F-250 P.U. T1538.....\$9,695

1984 CHEVROLET 3/4 4X4 T3527B.....\$6,995

1983 CHEVROLET P.U. T3577.....\$7,495

1981 CHEVROLET 3/4 4X4 T3567B.....\$4,995

1976 DODGE VAN T351TA.....\$2,995

1982 GMC 1/2 P.U. G301TC.....\$5,995

1978 JEEP WAGONEER T1491TB.....\$3,995

**OVER 200 NEW & USED  
VEHICLES TO CHOOSE FROM**

1986 CHEVY S-10 4X4 T1499.....\$9,995

1984 CHEVROLET S-10 P.U. T1535.....\$6,495

1984 TOYOTA CELICA T1541A.....\$4,995

1984 FORD THUNDERBIRD G265A.....\$8,995

1981 MERCURY ZEPHYR WAG. P401A.....\$2,295

1988 PONTIAC GONN T3546C.....\$13,995

1974 GMC 3/4 TON P.U. T1533TB.....\$895

1977 GMC 3/4 TON 4X4 T3597TA.....\$1,995

1981 FORD ECORLINE VAN T35570.....\$1,995

1957 FORD PICK-UP 1982TC.....\$795

1982 PONTIAC FIREBIRD 1976A.....\$1,995

1977 DODGE ASPEN G343B.....\$895

1986 TOYOTA P.U. G327TA.....\$1,695

1976 AMC PACER G338B.....\$395

**CON PAULOS  
CHEVROLET**

**PONTIAC & GMC TRUCKS**

324-3900 901 S. LINCOLN  
JEROME 734-6565

**ROY RAYMOND'S  
4x4 CLEARANCE**

Beat Winter's Weather, Come Home A Winner With...  
**1989 TEMPO ALL WHEEL DRIVE**

BRAND NEW



SAVE \$2,612<sup>00</sup> THEY'RE GOING FAST

JUST \$9,989

After rebate

4.9%

ASK ABOUT OUR FORD FACTORY FINANCING

**OTHER 4x4 SPECIALS**

'89 RANGER "S" 4x4s



HURRY! WHILE SUPPLIES LAST!

RESTYLED FOR '89

FRESH SUPPLIES JUST ARRIVED!

EQUIPPED WITH:

- 2.3L (alloy) 1-4 Engine
- Twin Tractor Beam Suspension
- Vinyl Bench Seat
- Inside Head Release
- Black Spoiler
- Removable Tailgate

• 5-Spd Manual Overdrive Trans

• R70 BSW tires (P215 on 4x4)

• Power Steering On 4x4

• Trip Odometer

• Halogen Headlamps

• Front Black Bumper

AVAILABLE IN A RAINBOW OF COLORS

MARKET VALUE \$12,132

NOW \$9,989 JUST

'89 F-150 4x4s



EQUIPPED WITH:

- 4.9L I6 Engine
- Convenience Group
- Tachometer
- Argent Styled Steel Wheels
- Auxiliary Fuel Tank
- Light Group
- Heavy Duty Battery
- Chrome Rear Step Bumper

- 4-Speed Manual Transmission
- Handling Package
- Chrome Grille
- Hi-Low-Abse Swing-Away Mirrors
- Radiator Reservoir Plug
- AM/AM First Street/Cross
- Sliding Rear Window
- Anti-Mach Mop

MARKET VALUE \$15,000

NOW \$12,888 JUST

PLUS SALES TAX

**Why Buy a Ford, Mercury, Pontiac  
or Chrysler when...  
you can buy the all new 1989  
Buick Century or Oldsmobile Ciera**

**FOR ONLY \$12,689**

TAKE YOUR CHOICE

**LEASE FOR ONLY \$230<sup>43</sup> PER MO.**

48 months net lease, plus fees & tax, o.a.c.

**25 BRAND NEW 1989 OLDSMOBILE CIERAS AND  
BUICK CENTURYS HAVE JUST ARRIVED!**

Completely re-styled in beautiful new colors and interiors. Many luxury options plus V-6 engine, air, power steering and brakes, rear window defogger, radial tires, body stripes and the popular option packages.

Dealer Retains Title!

**DICK DEY**

Oldsmobile • BUICK •

"The Dickering Place"

712 Main Ave. S. • Twin Falls • 733-6721

**DRIVE HOME A WINNER! CHECK THESE SAVINGS!**

80 MAZDA GLC 2 DOOR #30536	\$988	84 CHEVROLET CAPRICE WAGON #30579	\$5995
79 MERCURY GRAND MARQUE 2 DR. #30560	\$1488	85 PONTIAC FIERO 2 DOOR #30568	\$6995
78 MERCURY COUGAR 2 DOOR #30544	\$1488	85 MERCURY COUGAR 2 DOOR #30517	\$7495
77 DATSUN 1/4 TON PICKUP #40397	\$1688	86 DODGE D50 PICKUP 4X4 #40385	\$7495
83 BUICK ELECTRA WAGON #30492	\$1988	85 FORD LTD 2 DOOR #30572	\$7495
82 MERCURY LYNX WAGON #30534	\$1988	83 FORD THUNDERBIRD 2 DOOR #30573	\$7995
79 FORD PINTO 2 DOOR #30522	\$1988	83 FORD BRONCO 4X4 #40347	\$7995
79 FORD LTD WAGON #30547	\$2488	85 FORD BRONCO II 4X4 #40369	\$7995
82 MAZDA 626 4 DOOR #30541	\$2688	83 CHEVROLET CAMARO #30537	\$7995
83 FORD RANGER PICKUP #40384	\$2688	87 DODGE RAM 50 PICKUP 4X4 #40370	\$7995
77 CHEVROLET C-10 PICKUP #40399	\$2688	84 FORD BRONCO II 4X4 #40360	\$8495
80 CHRYSLER NEWPORT 4 DOOR #30515	\$2688	84 FORD BRONCO II 4X4 #40361	\$8495
84 AMC EAGLE 4X4 #30532	\$3488	88 FORD RANGER PICKUP #40371	\$8495
78 AUDI 5000 4 DOOR #30127	\$3995	83 GMC 1500 4X4 #40382	\$8495
81 DODGE RAM 150 PICKUP #40387	\$3995	86 FORD THUNDERBIRD 2 DOOR #30545	\$8495
65 FORD F-250 PICKUP #40388	\$3995	87 FORD TAURUS 4 DOOR #30599	\$8495
85 MERCURY TOPAZ 4 DOOR #30520	\$3995	87 CHEVROLET BLAZER 4X4 #40392	\$8495
84 MERCURY LYNX WAGON #30526	\$3995	85 FORD F-150 PICKUP 4X4 #40403	\$8495
77 FORD F-150 PICKUP 4X4 #40362	\$4495	85 CHEVROLET C-10 PICKUP 4X4 #40400	\$8495
83 CHEVROLET S-10 #40358	\$4695	84 GMC 2500 VAN #40381	\$8495
85 FORD ESCORT WAGON #30563	\$4895	86 FORD BRONCO 4X4 #40383	\$8495
82 FORD CLUB WAGON VAN #40368	\$4895	87 FORD AEROSTAR WAGON #40384	\$8495
85 FORD ESCORT 4 DOOR #30565	\$4895	88 FORD RANGER PICKUP 4X4 #40386	\$8495
81 PONTIAC TRANS AM 2 DOOR #30561	\$4895	88 FORD THUNDERBIRD 2 DOOR #30547	\$8495
82 GMC S-15 PICKUP #40340	\$4895	88 FORD TAURUS 4 DOOR #30147	\$8495
83 BUICK SKYHAWK 4 DOOR #40355	\$4895	86 FORD F-250 PICKUP 4X4 #40365	\$8495
84 GMC C-1500 PICKUP 4X4 #40393	\$4895	88 FORD RANGER PICKUP 4X4 #40364	\$8495

WE CARE ABOUT YOU!

**ROY RAYMOND**

Mon-Fri 8:00-8:00  
Sat 8:00-5:00

733-5110

Where We Make Quality And Value A Reality

1243 Blue Lakes Blvd., Twin Falls, Idaho

1-800-544-8159

# Largest Inventory of USED TRUCKS

## In The Magic Valley

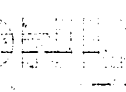
### ALL ON SALE NOW at the GIANT LATHAM

#### JUST LIKE THESE RIGHT HERE!!!

Home of \$4900 Down Delivers!



30



Chrysler Plymouth Dodge Dealer  
510 2nd Ave. S. • Twin Falls, Idaho • 733-5776

<b>1977 CHEVY 1/2 TON 4x4</b> Stock #2832 \$49 down X \$79/mo. <small>Sale price \$1299. Limits subject to prior sale. Terms 36 months. 12% APR. All total monthly payments and down payment \$2347. No Full-on Payments. Total down payment \$1444.00.</small>	<b>1984 NISSAN KING CAB</b> Stock #2794 \$49 down X \$95/mo. <small>Sale price \$1299. Limits subject to prior sale. Terms 36 months. 12% APR. All total monthly payments and down payment \$2347. No Full-on Payments. Total down payment \$1444.00.</small>	<b>1984 CHEVY 1/2 TON PICKUP</b> Stock #2805 \$49 down X \$99/mo. <small>Sale price \$1299. Limits subject to prior sale. Terms 36 months. 12% APR. All total monthly payments and down payment \$2347. No Full-on Payments. Total down payment \$1444.00.</small>	<b>1984 CHEVY 1/2 TON PICKUP</b> Stock #2784 \$49 down X \$109/mo. <small>Sale price \$1299. Limits subject to prior sale. Terms 36 months. 12% APR. All total monthly payments and down payment \$2347. No Full-on Payments. Total down payment \$1444.00.</small>
<b>1984 CHEVY 3/4 TON PICKUP</b> Stock #2790 \$49 down X \$109/mo. <small>Sale price \$1299. Limits subject to prior sale. Terms 36 months. 12% APR. All total monthly payments and down payment \$2347. No Full-on Payments. Total down payment \$1444.00.</small>	<b>1979 FORD 1 TON 4x4</b> Stock #2851 \$49 down X \$119/mo. <small>Sale price \$1299. Limits subject to prior sale. Terms 36 months. 12% APR. All total monthly payments and down payment \$2347. No Full-on Payments. Total down payment \$1444.00.</small>	<b>1978 DODGE 1/2 TON 4x4</b> Stock #2843 \$49 down X \$119/mo. <small>Sale price \$1299. Limits subject to prior sale. Terms 36 months. 12% APR. All total monthly payments and down payment \$2347. No Full-on Payments. Total down payment \$1444.00.</small>	<b>1979 DODGE 1/2 TON 4x4</b> Stock #2791 \$49 down X \$139/mo. <small>Sale price \$1299. Limits subject to prior sale. Terms 36 months. 12% APR. All total monthly payments and down payment \$2347. No Full-on Payments. Total down payment \$1444.00.</small>
<b>1977 FORD 1 TON 4x4 BRASS</b> Stock #2846 \$49 down X \$139/mo. <small>Sale price \$1299. Limits subject to prior sale. Terms 36 months. 12% APR. All total monthly payments and down payment \$2347. No Full-on Payments. Total down payment \$1444.00.</small>	<b>1987 FORD RANGER</b> Stock #2817 \$49 down X \$145/mo. <small>Sale price \$1299. Limits subject to prior sale. Terms 36 months. 12% APR. All total monthly payments and down payment \$2347. No Full-on Payments. Total down payment \$1444.00.</small>	<b>1978 DODGE 1/2 TON 4x4 PICKUP</b> CLUB CAR STOCK #2824 \$49 down X \$155/mo. <small>Sale price \$1299. Limits subject to prior sale. Terms 36 months. 12% APR. All total monthly payments and down payment \$2347. No Full-on Payments. Total down payment \$1444.00.</small>	<b>1987 DODGE POWER RAM 4x4</b> Stock #2823 \$49 down X \$159/mo. <small>Sale price \$1299. Limits subject to prior sale. Terms 36 months. 12% APR. All total monthly payments and down payment \$2347. No Full-on Payments. Total down payment \$1444.00.</small>
<b>1984 DODGE 1/2 TON PICKUP</b> Stock #2811 \$49 down X \$169/mo. <small>Sale price \$1299. Limits subject to prior sale. Terms 36 months. 12% APR. All total monthly payments and down payment \$2347. No Full-on Payments. Total down payment \$1444.00.</small>	<b>1984 DODGE 1/2 TON PICKUP</b> Stock #2879 \$49 down X \$179/mo. <small>Sale price \$1299. Limits subject to prior sale. Terms 36 months. 12% APR. All total monthly payments and down payment \$2347. No Full-on Payments. Total down payment \$1444.00.</small>	<b>1984 GMC 1/2 TON PICKUP</b> Stock #2812 \$49 down X \$179/mo. <small>Sale price \$1299. Limits subject to prior sale. Terms 36 months. 12% APR. All total monthly payments and down payment \$2347. No Full-on Payments. Total down payment \$1444.00.</small>	<b>1984 NISSAN 4x4</b> Stock #2851 \$49 down X \$179/mo. <small>Sale price \$1299. Limits subject to prior sale. Terms 36 months. 12% APR. All total monthly payments and down payment \$2347. No Full-on Payments. Total down payment \$1444.00.</small>
<b>1984 CHEVY 1/2 TON 4x4</b> Stock #2825 \$49 down X \$179/mo. <small>Sale price \$1299. Limits subject to prior sale. Terms 36 months. 12% APR. All total monthly payments and down payment \$2347. No Full-on Payments. Total down payment \$1444.00.</small>	<b>1986 DODGE 1/2 TON 4x4</b> LOADED Stock #2847 \$49 down X \$179/mo. <small>Sale price \$1299. Limits subject to prior sale. Terms 36 months. 12% APR. All total monthly payments and down payment \$2347. No Full-on Payments. Total down payment \$1444.00.</small>	<b>1987 DODGE POWER RAM 4x4</b> Stock #2815 \$49 down X \$179/mo. <small>Sale price \$1299. Limits subject to prior sale. Terms 36 months. 12% APR. All total monthly payments and down payment \$2347. No Full-on Payments. Total down payment \$1444.00.</small>	<b>1985 DODGE 1/2 TON 4x4</b> Stock #2828 \$49 down X \$179/mo. <small>Sale price \$1299. Limits subject to prior sale. Terms 36 months. 12% APR. All total monthly payments and down payment \$2347. No Full-on Payments. Total down payment \$1444.00.</small>
<b>1987 NISSAN PICKUP</b> HARD BODY Stock #2779 \$49 down X \$179/mo. <small>Sale price \$1299. Limits subject to prior sale. Terms 36 months. 12% APR. All total monthly payments and down payment \$2347. No Full-on Payments. Total down payment \$1444.00.</small>	<b>1988 TOYOTA PICKUP 4x4</b> Stock #2768 \$49 down X \$189/mo. <small>Sale price \$1299. Limits subject to prior sale. Terms 36 months. 12% APR. All total monthly payments and down payment \$2347. No Full-on Payments. Total down payment \$1444.00.</small>	<b>1985 DODGE 1/2 TON 4x4</b> Stock #2841 \$49 down X \$189/mo. <small>Sale price \$1299. Limits subject to prior sale. Terms 36 months. 12% APR. All total monthly payments and down payment \$2347. No Full-on Payments. Total down payment \$1444.00.</small>	<b>1986 DODGE 1/2 TON PICKUP</b> Stock #2818 \$49 down X \$189/mo. <small>Sale price \$1299. Limits subject to prior sale. Terms 36 months. 12% APR. All total monthly payments and down payment \$2347. No Full-on Payments. Total down payment \$1444.00.</small>
<b>1987 DODGE POWER RAM 4x4</b> WHEEL Stock #2827 \$49 down X \$189/mo. <small>Sale price \$1299. Limits subject to prior sale. Terms 36 months. 12% APR. All total monthly payments and down payment \$2347. No Full-on Payments. Total down payment \$1444.00.</small>	<b>1988 DODGE POWER RAM 4x4</b> Stock #2829 \$49 down X \$189/mo. <small>Sale price \$1299. Limits subject to prior sale. Terms 36 months. 12% APR. All total monthly payments and down payment \$2347. No Full-on Payments. Total down payment \$1444.00.</small>	<b>1979 GMC 1 TON DUALY</b> SEAROCK Stock #2841 DISCOUNTED \$2000.00 <small>Sale price \$1299. Limits subject to prior sale. Terms 36 months. 12% APR. All total monthly payments and down payment \$2347. No Full-on Payments. Total down payment \$1444.00.</small>	<b>1988 CHEVY 1/2 TON 4x4</b> LOADED Stock #2821 DISCOUNTED \$3000.00 <small>Sale price \$1299. Limits subject to prior sale. Terms 36 months. 12% APR. All total monthly payments and down payment \$2347. No Full-on Payments. Total down payment \$1444.00.</small>
<b>1987 DODGE 1/2 TON 4x4</b> Stock #2724 DISCOUNTED \$3500.00 <small>Sale price \$1299. Limits subject to prior sale. Terms 36 months. 12% APR. All total monthly payments and down payment \$2347. No Full-on Payments. Total down payment \$1444.00.</small>	<b>1988 CHEVY 1 TON FLAT BED</b> LIKE NEW Stock #2811 ON THIS PICKUP SAVE \$4000.00 <small>Sale price \$1299. Limits subject to prior sale. Terms 36 months. 12% APR. All total monthly payments and down payment \$2347. No Full-on Payments. Total down payment \$1444.00.</small>		

Sale Ends Monday, Feb. 6 at 8 p.m.

