

THE LITTLEST DANCERS

Young ballerinas dance in 'Nutcracker.'

ENTERTAINMENT, C1

DREARY NOVEMBER DROPS SALES

Shoppers hold back on spending during early start to holidays.

BUSINESS, B1



TIGERS TAME BOBCATS

Top-rated Jerome girls top Burley at home.

SPORTS, D1

TIMES-NEWS

Friday, December 5, 2008

MagicValley.com

75 cents

State, Idaho Power plead case on recharge issue

Debate was left over from Swan Falls decision

By Nate Poppino
Times-News writer

A 5th District Judge will soon resolve one more aspect of the historic Swan Falls Agreement between the state of Idaho and Idaho Power Co. In April, Judge John Melanson upheld the terms of the landmark

agreement, telling Idaho Power that it couldn't nullify its terms because of a decline in water after the deal was settled. In the 1984 deal, Idaho Power surrendered water rights for guarantees it would receive average daily water flows of 3,900 cubic feet per second from April 1 to Oct. 31, and 5,600 cfs in the fall and winter, at Swan Falls gauge near Murphy. The remaining water above those flows was placed in a water trust to be managed by the state. In

return, the state dropped all efforts to subordinate the company's water right. Idaho Power's summary judgment motion now seeks to keep the state from putting water rights it owns for recharge projects ahead of the company's rights. Both the state and a group of eastern-Idaho water users countered with their own motions against the company's, and Melanson heard arguments from all three for two and a half hours on Thursday afternoon.

The issues included:
• Whether changes to state law and water policy since the agreement affect what Idaho Power's water can be subordinated to.
• Whether those changes, and amendments to the agreement, put recharge on the same priority level as hydropower use.
• What combination of sources, including the agreement, its amendments and documents prior

Please see RECHARGE, Page A2

T.F. massage parlor closes

Two masseuses arrested in prostitution sting plead not guilty

By Andrea Jackson
Times-News writer

The red neon "open" sign is dark, and another reading "Osaka Massage and Spa" has disappeared from the converted home on Addison Avenue where two women were arrested for allegedly engaging in prostitution. Myeong Sook Mickle, 46, is charged with one count of prostitution and Sun Do Chong, 57, is charged with two. Both women are represented by Twin Falls attorney Hyong Pak and have pled not guilty. Pak confirmed he declined further comment, saying he had not yet seen all documents related to the case.

The women allegedly offered to perform sexual acts with undercover Twin Falls County sheriff's deputies for money in an investigation that began last year.

Investigators wanted to charge Mickle with a felony — interstate trafficking in prostitution. But County Prosecutor Grant Loeb on Thursday said the evidence doesn't sustain a felony charge.

To make that charge stick, he would have to prove that Mickle had brought another person across a state line for prostitution.

Mickle posted bond and is now in Hanover, Pa. Reached by telephone Thursday, she said only "I'm married. Talk to my attorney" before hanging up.

She allegedly told authorities that she was sent to Twin Falls 20 days before her arrest by a Korean woman in New York. She said the woman is named InZong, but said she did not know how to find her, according to court records.

Deputies say Chong told them a similar story, though she did not say who sent her to Twin Falls some three months before her Nov. 12 arrest.

Chong is no longer in custody, but it's unclear where she is now. She came to Idaho from Baltimore, and Mickle from Hanover, Pa., court records show.

According to court records, the women said once a month another Asian woman, whom they did not know, came to the massage parlor to pick up "house money" and \$2,000 in rent.

Authorities say Osaka charged \$60 to \$200, depending on the sex act. Court records show that deputies began their investigation in 2007, but it is unclear what investigation was performed or why there were no arrests until last month.

Authorities aren't planning to charge anyone else in the case, and have not contacted federal

Please see PARLOR, Page A2

Avoiding a cram session



Twin Falls High School students make their way through the hallways Thursday at the end of the school day. The city's proposed comprehensive plan projects that the Twin Falls School District will grow to 11,261 students by 2020, creating a need for 600 more schools.

TFSD eyes new elementary, junior high plans within three years

By Ben Dobbs
Times-News writer

The completion of Canyon Ridge High School in Twin Falls will not end planning for new schools in the Twin Falls School District. The city's proposed comprehensive plan, Twin Falls Vision 2030, projects a continued growth in the school district's enrollment in the years ahead. The comprehensive plan, a 197-page document, is intended to be a guide for the city's future and planning efforts. For the Twin Falls School

MagicValley.com
SEE the final draft of the comprehensive plan's look at education in Twin Falls. To view the entire plan, visit <http://www.kf-tv.com/projects/twinfalls.htm>.

District, the future has substantial student growth in the years ahead. Enrollment at Twin Falls schools is projected to reach 11,261 by 2020, up from about 7,600 students currently. In the long term, that means the school district will need another elementary school and junior high, Superintendent Wiley Dobbs said.

"There's a lot of planning that will need to be done," he said. The school district will spend 2009 finishing up Canyon Ridge High School and getting settled into the new facility. Beyond 2009, the district will need to form a committee that will look at needs for the two future schools, Dobbs said, adding that the committee is about two or three years

away from the start of its work. Mitch Humble, community development director for Twin Falls, said the goal of the comprehensive plan is not to tell the school district what to do. Instead, it's to set the general course for how the city intends to grow, he said. "I don't think it's this plan's purpose to plan out how the school district needs to grow," he said. "That's more of a school district decision. ... We're going to let them decide when and what to build."

Please see SCHOOLS, Page A2

Ex-bear's Craigslist rant leads to criminal charges

By Nicholas Riccardi
Los Angeles Times

FORT COLLINS, Colo. — Locked in a visitation dispute with his ex-girlfriend over their young daughter, J.R. Weichel wanted to vent, court records show. Weichel, 40, allegedly posted comments about the woman on the Craigslist "Rants and Raves" forum, accusing her of child abuse and of welfare fraud and making crude comments about her sex life. The woman said the postings

were defamatory. But unlike the vast majority of libel cases, which are tried in civil court, local authorities have taken the unusual step of charging Weichel with the crime of defaming his ex-girlfriend online. Colorado is one of a dwindling number of states with a criminal law against libel. The statute dates to the 19th century and is rarely used. But Larimer County District Attorney Larry

Please see BMT, Page A4

IDAHO LEGISLATURE 2009 M.V. lawmakers expand presence on budgeting panel

By Jared S. Hopkins
Times-News writer

BOISE — Magic Valley legislators Thursday increased their influence on the state's budgeting panel, an extension that could prove pivotal during a 2009 legislative session expected to be defined by extreme budget tightening and program cuts. Few changes to the makeup of legislative committees and leadership teams emerged from the organizational session of 105-member Idaho Legislature. After the November elections, the

political landscape remained nearly identical: Republicans claimed one seat for an 80-25 majority. But lawmakers from southern Idaho extended their roster on the powerful Joint Finance-Appropriations Committee, the 20-member panel that writes the state budget. The eight-county region's six legislators on the committee — four House members and two senators — are the most the region has seen in at least a decade. "It means we have good legislators who recognize the importance in what a tough

INSIDE
See committee assignments for M.V. legislators.
Lawmakers react to Otter's road proposals.
See page A4

year we've got," said JFAC Co-chairman Sen. Dean Cameron, R-Rupert, elected to a 10th term this year. "When I arrived here yesterday I didn't dream that we'd end up with six members. I was shocked when we had five out of 20."

JFAC is co-chaired by Cameron and Rep. Maxine Bell, R-Terome. It also includes Rep. Wendy Jaquet, D-Ketchum, who voluntarily gave up her post as House Minority Leader to take one of two House Democrat seats; Rep. Fred Wood, R-Burley; Rep. Jim Patrick, R-Twin Falls; and Sen. Bert Brackett, R-Rogerson, who sat on JFAC while in the House. Elsewhere, lawmakers from south-central Idaho continue to be among the most powerful, as most members are

Please see PRESIENCE, Page A2

Obituaries on.....B5	Commodities.....B2	Horoscope.....E3	Opinion.....A87
Bridge.....E2	Crossword.....E4	Jumble.....E7	Sudoku.....E2
Comics.....D5	Dear Abby.....E3	Movies.....C7	Today in History.....E3
Classifieds.....E1-10	Community.....B3-4	D. Got.....E3	Weather.....B6
		Nation/World.....A5	

High 43 Low 24
 Cloudy, Details: B6
 and live at magicvalley.com/weather

MORNING BRIEFING

TODAY'S HAPPENINGS

ARTS AND ENTERTAINMENT

First Fridays, with live bluegrass by Strings Attached, Eric Etevojev in Rudy's live kitchen, free food tasting and beverages sold by the glass, 8 to 9 p.m., Rudy's/A Cook's Paradise, 147 Main Ave. W., Twin Falls, www.cooksparisade.com.

Gallery walk, open until 8 p.m., Jensen Ringmakers and Gallery, 109 Main Ave., downtown Twin Falls, no cost, open to the public, 734-8091 or www.jensenjewelers.com/RingmakersGallery.php.

Coffeehouse Night at Hands On/The Divine Grind, with live music by Ethan Tucker, 7:30 to 10:30 p.m., Hands On/The Divine Grind, 147 Shoshone St. N., Twin Falls, painting and drink specials, www.handsonstudio.com/, 736-4475.

Charles Dickens' "A Christmas Carol", presented by College of Southern Idaho Theater Department, 8 p.m., CSI Fine Arts Center Theater, \$5 for adults and \$6 for senior citizens and students, 732-6288 or Tickets.csi.edu.

Disabled American Veterans Auxiliary public dance, 8 p.m., DAV Hall, 459 Shoup Ave., Twin Falls, \$2 donation, 734-5208.

BAZAARS AND FAIRS

Grandy's and Juniper Street Farmhouse Christmas Craft Show, 8:30 a.m. to 6 p.m., Juniper Street Spiceries/Garden Center, Buhl, 20386 U.S. Highway 30, 1.75 miles East of Buhl on Highway 30, laytranneidance@hotmail.com.

Magic Mud, 9 a.m. to 7 p.m., Eagle's Nest, College of Southern Idaho Student Union building, Twin Falls, portion of proceeds to CSI Art Club, 732-6855.

The annual Christmas Procrastination Sale, includes jewelry gift baskets, wood burning, wooden carvings and turning, ceramics, prints, paintings, crafts and more by local artists and craftsmen; also fundraiser bake sale for children in Colimar, Mexico, sponsored by His Name Christian Fellowship, 10 a.m. to 7 p.m., Lion's Gate Gallery, 219 Main St., Buhl, no admission fee, 410-0334.

The 43th annual Gooding Holiday Craft Show, includes gifts, toys, decorations and food sponsored by Gooding Chamber of Commerce; lunch by donation provided by Helping Hearts and Hands, 10 a.m. to 6 p.m., Gooding Accelerated Learning Center, 906 Main St., Gooding, 934-5475.

Hagerman-Lea Overlay Post #31 American Legion Auxiliary annual Holiday Bazaar, includes variety of gifts, crafts and decorations, special raffles for Girls State in June 2009; "Kids Craft Table" (\$1 per craft) while parent shops, 3 to 8 p.m., Hagerman American Legion Hall, corner of State Street and Lake Avenue, food available for nonpayment fee, canned food donation in lieu of admission fee, (208) 837-6060.

BENEFITS AND FUNDRAISERS

Gooding County Memorial Hospital Foundation 2008 Festival of Trees luncheon/style show, 11:15 a.m. seating and 1 p.m. seating; \$10; and **Festival of Trees**, 3 to 5 p.m., \$2 general admission, ISOB Rm 200, 2219 W. Ave. E., Gooding, proceeds to help with scholarships and hospital equipment, 934-5760.

Festival of Miss Fit Trees, decorate anything but a tree to raise money for Secret Angel Fund, 5 to 8 p.m., Mason Hall (across from courthouse at 112 W. B St.), Shoshone, admission: one new or "like new" toy; bring nonperishable food item for poor dinner eligibility, 544-7505 or 316-9297.

First Friday Dinner a buffet-style, traditional Basque meal sponsored by the Gooding Basque Association, 6 to 8 p.m., Basque Cultural Center at the intersection of Highways 26 and 416 in Gooding, general donation of \$14, \$12 seniors and \$6 children, (209) 352-4266 or 308-5051.

CLUBS AND ORGANIZATIONS

Snake River Chapter of the Idaho

Archaeological Society meeting, no-host, planning supper open to all who like archaeology and history, 6:30 p.m., Idaho Joe's, 598 Blue Lakes Blvd. N., Twin Falls, 733-7495.

EXHIBITS

Last day of Lincoln Bicentennial Exhibit, 4 to 7 p.m., Gooding High School, open to the public, carlyh@goodingschools.org.

FAMILY

Youth Options Extreme, activities for young people ages 13-18 only, 7 to 11 p.m., The Salvation Army, 348 Fourth Ave. N., Twin Falls, \$1, 732-6272, or www.myspac.com/YouthOptionsExtreme.

GOVERNMENT

Twin Falls County commissioners, 8:30 a.m., courthouse, 425 Shoshone St. N., 736-4068. Board of county commissioners, 9 a.m., courthouse, 206 First Ave. S., Halley, 788-5500.

HEALTH AND WELLNESS

College of Southern Idaho's Over 60 and Getting Fit programs, a guided walking workout with stretching and Christian devotional training, 9 to 10 a.m. at several Magic Valley locations: Blaine County Campus Gym, CSI gym, Gooding ISOB gym, Jerome Rec Center, Rupert Civic Gym and Shoshone High (old gym); and 11:30 a.m. to 12:30 p.m. at CSI Buryer/Outreach Center Gym, no cost, 732-6475.

Fit and Fall Proof Exercise Class, 10 to 11 a.m., Blaine County Senior Connection, 721 S. Third Ave., Halley, no cost, 737-5988.

Fit and Fall Proof Exercise Class, 10:30 to 11:30 a.m., Ageless Senior Citizens, Inc., 310 Main St. N., Kimberly, no cost, 737-5988.

Fit and Fall Proof Exercise Class, 11 to 11:45 a.m., Oakley Fire Station, 515 E. Main St., Oakley, no cost, 737-5988.

Fit and Fall Proof Exercise Class, 1:30 p.m., front lounge, Woodstone Assisted Living Facility, 491 Caswell Ave. W., Twin Falls, no cost, 737-5988.

Celebrate Recovery, based on the 12 steps and eight biblical principles, 7 p.m., Cafe Agape, Light House Christian Fellowship, 259 Main Ave. E., Twin Falls, 737-4687.

Celebrate Recovery, a place to learn life-affirming, healthy behaviors, 7 p.m., Fireside Room of the Nazarene Fellowship Hall at Yekima and Main, Flair, 734-0557.

Al-Anon/Alateen family groups, to help friends and families of alcoholics, hotline: 1-866-592-3198.

HOBBIES/CRAFTS

Christmas ornaments/Candy Making class, 2 to 3:30 p.m. or 3:45 to 5:15 p.m., Twin Falls Creative Arts Center, 249 Main Ave. W. in Twin Falls, cost: \$25 for all ages (supplies included), 737-9111 or cfcc@truceccupmyrf.net.

MUSEUMS AND PARKS

Faulkner Planetarium "Season of Light" at 11 a.m., "Steamrolling Through the Holidays" at 1 p.m., "Here Comes the Sun" at 2:30 p.m.; "Season of Light" at 4 p.m.; "The Christmas Star" at 7 p.m.; and "Steamrolling through the Holidays" at 8:15 p.m., Herrett Center for Arts and Science, north end of the College of Southern Idaho campus, Twin Falls, no cost with admission to Festival of Trees (\$4 for adults and \$1 for children 12 and under), 732-6655.

To have an event listed, please submit the name of the event, a brief description, time, place, cost and contact number to Suzanne Brown by e-mail at sbrown@magicvalley.com; by fax, 734-5538; or by mail, Times-News, P.O. Box 548, Twin Falls, ID 83303-0548. Deadline is noon, four days in advance of the event.



Pat Marcantonio
and do today

• The craft shows continue with the Gooding Holiday craft show from 10 a.m. to 6 p.m. and 10 to 4 p.m. tomorrow at the Gooding Accelerated Learning Center, 606 Main St. The show raises money for needy children so bring canned food, an unwrapped toy or both. Today and tomorrow is the Hagerman-Lea Overlay Post No. 31 American Legion Auxiliary Holiday Bazaar from 3 to 8 p.m. today and 9 a.m. to 4 p.m. tomorrow at the Hagerman American Legion Hall, on the corner of State Street and Lake Avenue. Bring canned food in lieu of an admission fee. There's also food and a kid's craft table so you can shop unhindered.

• A mixture of South American, Mexican and American roots is in the music of Perla Batalla, who performs at 7:30 p.m. at the Church of the Holy Wood, 100 Saddle Road in Kericham, as part of Sun Valley Center for the Arts' Concert Series. Batalla gained international attention as a backup singer for Leonard Cohen. Tickets are \$20 for center members.

• \$25 for non-members and \$5 for children 12 and under, at www.sunvalleycenter.org or 728-9491.

• Bundle up and check out the 2008 Festival of Lights parade starting at 6 p.m. down Main Avenue in downtown Twin Falls. It goes from Krengel's True Value Hardware to Magic Valley High School.

Have your own pick you want to share? Something that is unique to the area and that may take people by surprise? E-mail me at patm@magicvalley.com.

T.F. Festival of Lights Parade is tonight

The lights of the season will be glowing downtown Twin Falls tonight when the Business Improvement District's Festival of Lights Parade proceeds on Main Avenue at 6 p.m.

The parade route will begin in the 500 Block of Main Avenue East/South and will travel to the 500 Block of Main Avenue North/West. The Twin Falls Police Department will be closing Main Street between the intersection of Main Street and Murtaugh Street at the intersection of Main Street and Castleford Street. Shoshone Street will also be closed between Second Avenue East/Northeast and Second Avenue West/South.

The street closures will begin at 5 p.m. Friday evening and the parade is over and pedestrian traffic has safely dispersed.

The Twin Falls Police Department encourages drivers to be cautious while driving in the area and to plan ahead when traveling through this area.

Recharge

Continued from page A1

to its creation, should be used to resolve the issue.

• Whether recharge is a tool or also a beneficial use of water, and whether it falls under the definition of depleting the river.

As to whether Idaho Power even has any control over the dam's water rights upstream of Milner.

The last contention, a theme throughout the first round, was one of the afterthought by Deputy Attorney General Michael Orr, arguing on behalf of the state. It rests on the fact that the Snake River — both now and at the time of the agreement — is essentially treated as separate rights above and below Milner Dam.

The state allows for the river to be completely diverted at Milner, replenishing itself downstream through springs providing water from the aquifer. No water-right holders above Milner can affect rights below the dam and vice-versa. So, Orr argued, the company's upstream water rights end at Milner.

Beyond that, all sides pointed to various documents and testimony to explain why the state can or can't take the water for recharge. The word doesn't appear anywhere in the agreement, but Orr argued that its language would prohibit the state from changing what uses are considered "beneficial" and that a later provision made recharge as important of a use as power generation.

Representing Idaho Power, attorney Michael Gheleta said in turn that even the later amendments to the agreement placed restrictions on recharge uses, and said definitions in sections of the agreement expressly lock in what can affect the compa-

nys' rights. He said the agreement should be read using the policies in place at the time it was made, which largely ranked recharge below hydropower.

The water users supported the state's take on the matter and questioned whether Idaho Power should have spoken up sooner about the recharge issue. One of their attorneys is Jerry Rigby, chairman of the Idaho Water Resource Board, which owns the state recharge rights and is seeking to move forward with recharge projects across southern Idaho.

The city of Pocatello also submitted comments in the case.

Melanson now faces the task of sifting through the voluminous filings of the case and will issue a decision on the motions at a future date.

Nate Poppino may be reached at 208-735-3237.

Parlor

Continued from page A1

authorities about the interstate movement of the women, said Sheriff's Office spokeswoman Lori Nebeker.

That means no clients of the alleged house of prostitution will be sought, officials said.

"The burden of proof for that is difficult," said Nebeker, because it would require "almost having to catch them in the act ... We don't have that burden of proof."

Deputies did observe nine men who entered Osaka's on Oct. 23 and then leave 25 to 30 minutes later, court records show. Court records don't indicate if deputies identified the men or established what, if any criminal activity may have been involved.

Potential physical evidence of sex for sale, such as condoms, wasn't found when deputies later raided the business.

"You make the case against the people you haven't once against," And Loeb's adding the investigation and charges were not determined by the gender of the accused. "It doesn't matter to me whether they're men or women."

Prosecution wasn't charged at last year in Twin Falls County and this is the only case this year. Loeb's said it is the first case he has seen in nearly a decade as prosecutor.

An owner of the Osaka property, Brian Anderson of Boise, answered the door then on Thursday. He said he knew nothing about prostitution there and plans to sell the home.

Court records show that a co-owner of the property, Irl Anderson-Groff, has been convicted of prostitution in Boise, along with violating a city ordinance regarding massage parlor sanitation.

Court records also show that Scott Orr of Twin Falls filed Osaka's bond. Orr in court records listed a telephone number that is registered to Twin Falls.

A man who answered a call to that number Thursday declined to give his name but said "somebody" had called and asked "to post the bond." He said that in the past "we" picked up women from Osaka's and drove them to get groceries.

The man would not say who asked for help after the arrests.

Loeb's said he would be willing to pursue a broader case involving interstate trafficking by the people who established the business.

"If they (deputies) bring us any evidence for prosecution, we can charge that," Loeb's said. "I don't recommend what they do if they bring something to me I might consider it."

Andrea Jackson may be reached at 208-735-3300.

Schools

Continued from page A1

For now, it's too soon to know where the new schools will be. But the school district already owns land at several locations: off of Hankins Road on the city's east end, on the south end along 3600 North Road, and near the Sunway Soccer Complex on

the west side.

Those are possible sites, Dobbs said, adding that the land could always be sold or well-positioned if the schools are built elsewhere.

As for the future of the College of Southern Idaho, growth on the north end of the campus is likely in the long-term future, said John Miller, an instructor dean at CSI. The new health sciences and human services buildings currently under construction is an example, he said.

The Twin Falls City Council will have a public hearing in January for the comprehensive plan.

Presence

Continued from page A1

either committee chairman or hold leadership posts.

In the House, all committee chairs retained their positions, including Bert Stevenson, R-Rupert of House Resources and Conservation; Bell of Appropriations; and Sharon Block, R-Twin Falls, of Health and Human Services.

Leon Smith, R-Twin Falls, is also vice-chairman of the Judiciary, Rules and Administration Committee. Gov. CL "Butch" Otter recently budgeted the year's budget cuts to 4 percent, or \$130 million. House Assistant Majority Leader

Scott Bedke, R-Oakley, said because of the troubled economy, the session will be focused on appropriations, and lawmakers from south-central Idaho are well-positioned to serve their constituents.

"It means (Magic Valley residents) will be represented," he said. "I don't know that it means there will be any larger slices of any pies, because that's not the legislative process. But they're well positioned to articulate the issues of the Magic Valley."

Bedke, like the rest of the GOP leadership members in the House and Senate, was re-elected by his caucus. Meanwhile, representa-

tion in the Senate was more spread out. Denton Darrington, R-Declo, remains chairman of the Judiciary and Rules, as does Catherine of Finance.

But vacancies left by the death of Tom Gannon, the Republican senator from Buhl, on the education and agricultural affairs committee went unfilled. There are no local lawmakers on those Senate committees, as well as transportation, or local government and taxation.

Freshman lawmaker Stephen Hargen, R-Twin Falls, will sit on Commerce and Human Resources; Education and Environment Energy and Technology committees.

CORRECTION

Tree misidentified

Due to incorrect information provided to the Times-News, the lumber pine was misidentified in a story Sunday about live, potted Christmas trees.

The Times-News regrets the error.

TIMES-NEWS

Subscription (6 months)	735-3345
Subscription (1 year)	735-3345
Subscription (2 years)	735-3345
Subscription (3 years)	735-3345
Subscription (4 years)	735-3345
Subscription (5 years)	735-3345
Subscription (6 years)	735-3345
Subscription (7 years)	735-3345
Subscription (8 years)	735-3345
Subscription (9 years)	735-3345
Subscription (10 years)	735-3345
Subscription (11 years)	735-3345
Subscription (12 years)	735-3345
Subscription (13 years)	735-3345
Subscription (14 years)	735-3345
Subscription (15 years)	735-3345
Subscription (16 years)	735-3345
Subscription (17 years)	735-3345
Subscription (18 years)	735-3345
Subscription (19 years)	735-3345
Subscription (20 years)	735-3345
Subscription (21 years)	735-3345
Subscription (22 years)	735-3345
Subscription (23 years)	735-3345
Subscription (24 years)	735-3345
Subscription (25 years)	735-3345
Subscription (26 years)	735-3345
Subscription (27 years)	735-3345
Subscription (28 years)	735-3345
Subscription (29 years)	735-3345
Subscription (30 years)	735-3345
Subscription (31 years)	735-3345
Subscription (32 years)	735-3345
Subscription (33 years)	735-3345
Subscription (34 years)	735-3345
Subscription (35 years)	735-3345
Subscription (36 years)	735-3345
Subscription (37 years)	735-3345
Subscription (38 years)	735-3345
Subscription (39 years)	735-3345
Subscription (40 years)	735-3345
Subscription (41 years)	735-3345
Subscription (42 years)	735-3345
Subscription (43 years)	735-3345
Subscription (44 years)	735-3345
Subscription (45 years)	735-3345
Subscription (46 years)	735-3345
Subscription (47 years)	735-3345
Subscription (48 years)	735-3345
Subscription (49 years)	735-3345
Subscription (50 years)	735-3345

See what's new at
magicvalley.com

Copyright © 2008 Magic Valley Newspapers, Inc. Vol. 103, No. 340



Stephanie Meyer's granddad alive and reading in Paul

E.J. Morgan hasn't seen his granddaddy's name yet, but then he's 87 and "hates to stand in line" ...

He may be one of the few Mini-Cassia residents who hasn't gone to see the film version of Stephanie Meyer's novel "Twilight".
"I talk to her father; he calls every Saturday," said Morgan, a retired farmer and businessman who lives in Paul ...
"He keeps me up to date, and obviously, we're very proud of her" ...

Say so

If it's odd, quirky, sad, poignant or funny and it happens in south-central Idaho, I want to hear about it. Call me at 735-3223, or write scrump@magicvalley.com.

Meyer, who will turn 35 on Christmas Eve, may be the hottest writer in America at the moment ... She is the author of the bestselling, young adult "Twilight" series, which revolves around the relationship between mortal Bella Swan and vampire Edward Cullen ... "Twilight" books have sold more than 25 million copies worldwide and have been translated into 37 languages ...

"Twilight," the movie, was released Nov. 21 ... In two weeks, it's earned \$26.3 million at the box office ...

"I never thought I would enjoy books about vampires, but I do," Morgan said ...

Meyer's dad, Steve, read to Stephanie, her three brothers and two sisters when they were young, an experience that had great emotional resonance for Stephanie, E.J. Morgan said ... Steve, a 65-year-old financial manager, was born in Murtaugh and graduated from Murtaugh High in 1965 ...

"Stephanie was born when they were living back in Connecticut," E.J. Morgan said ...

Meyer has said that the idea for "Twilight" came to her in a dream on June 2, 2003 ... The dream was about a human girl and a vampire who was in love with her but thirsted for her blood ...

Based on the dream, Meyer wrote a chapter and within three months developed it into a novel ... She signed a three-book deal with Little, Brown and Company for \$750,000, and the book was released in 2005 ...

"Her sister sent it into the publisher for her," Morgan recalled ...

Following the success of "Twilight," Meyer expanded the story into a series with three more books: "New Moon" (2006), "Eclipse" (2007) and "Breaking Dawn" (2008) ... The first three "Twilight" books spent a combined 143 weeks on the New York Times Best Seller list ... "Breaking Dawn" sold 1.3 million copies on the day it was released ...

An avid reader, Meyer has said Charlotte Bronte and L.M. Montgomery ("Anne of Green Gables") inspire her work, as well as the music of the rock bands Muse, Blue October, My Chemical Romance, Coldplay and Linkin Park ...

Married and the mother of three sons, Meyer lives in Cave Creek, Ariz. ... She holds a degree in English from Brigham Young University ...

"Stephanie is a fine writer," E.J. Morgan said. "People have told me the books are better than the movie" ...

AROUND THE VALLEY

Forest Service RAC deadline extended

The U.S. Forest Service and four area counties have extended the deadline for applicants for a new resource advisory committee.

People interested in serving on the RAC now have until Jan. 16 to apply, almost one month later than the original deadline. The 15-member committee reviews proposed forest projects and issues recommendations on them to the Forest Service.

The delay was made in part to accommodate the busy holiday season and also to ensure a large group of people to choose from. Forest Service spokeswoman Alicia Bennett said.

Six RACs currently exist in Idaho. The new one will include Blaine, Camas, Cassia and Twin Falls counties.

Application packets can

be picked up from and submitted to Forest Service ranger stations or the county offices.

DEQ seeks members for crop-burning committee

The Idaho Department of Environmental Quality is looking for candidates for a committee that will advise the agency on issues related to crop-residue-burning.

The committee will include representatives of environmental, farming, health and tribal organizations, along with DEQ, the Idaho State Department of Agriculture and the U.S. Environmental Protection Agency, according to a press release. It was created by a state law authorizing a burning program this fall. It will meet early next year to review the program's procedures and performance during this season.

Interested candidates should submit a letter stating which organization they would represent and their interest in serving.

Applications can be submitted through Dec. 29. Information: Mary Anderson, 208-373-0202 or maryander-

PUC plans hearing on IP-rate case

The Idaho Public Utilities Commission will hold a public hearing on Tuesday evening in Twin Falls to get input on a requested rate increase for Idaho Power Co.

The utility is asking for an average 9.89 percent increase, varying based on customer class. It is arguing that it must

increase its annual revenue by \$66.6 million. PUC staff has filed comments proposing a \$3.7 million annual increase, or 1.44 percent.

The Twin Falls hearing, planned for the City Council chambers at 305 Third Ave. E., is intended as a way to gather comments from customers. It is one of three; two others are scheduled for Pocatello and Boise. A decision on the request is expected early next year.



12 DAYS OF CHRISTMAS

Use Your Slotspitality Card And You Will Automatically Qualify To...

Pick an Ornament

Details At The Slotspitality Club Booth



Drawings Friday Saturday and Sunday

Outdoor Christmas Light Display

Thousands of lights, nativity, holiday, and patriotic displays. Bring the family and enjoy! Beginning on Thanksgiving night through New Year's Eve from 5:00 pm to 11:00 pm. No charge; no donations. Located 1 1/2 miles south of Curry Country Store on 2500 East, Twin Falls.

JAKERS BAR AND GRILL

Jaker's Gift Cards

So Here's the Deal...

For Every \$100 in Gift Cards Purchased, Receive a \$25 Gift Card FREE!

To get this deal call, go online or just drop by.

733-8400

www.jakers.com

1598 Blue Lakes Blvd. N., Twin Falls

Shop for All Your HOLIDAY NEEDS... at These DOWNTOWN SHOPS!

Bee's Book Been

Remembering the past with gently used Collectible and Bargaining in Downtown

100 MAIN AVE. N. 733-7292

Century Sport Pens

Now available in...

- Racing Red
- Steel Blue
- Carbon

\$36⁹⁵

Established 1912
OFFICE SUPPLY INC.
158 Main Ave. South
733-2412
www.office-supply.com
Open Mon-Fri 9am-6pm
Saturday 10am-3pm

Music Center, Inc. Est. 1947

221 Main Ave. E. Historic Downtown
Twin Falls, Idaho 83301
208-733-8609

CASIO

A SERIOUS CHOICE FOR PIANO BUYERS!

- Weighted and velocity sensitive keys
- Full 88 note keyboard

STARTING AT **\$699**

Come in and play the new PRIVIA by Casio

Lawmakers react to Otter's road proposals

By Jared S. Hopkins
Times-News writer

BOISE — A general idea of how Gov. C.L. "Butch" Otter hopes to raise revenue to repair Idaho's crumbling roads and bridges was unveiled Wednesday.

Slow down, legislators said Thursday.

Legislators, in Boise for their organizational session, commending what is expected to be a major issue of the 2009 legislative session. His chief-of-staff on Wednesday said the governor will propose increasing registration fees, raising the 25-cent-per-gallon state gas tax and taxing rental car use.

But in interviews, lawmakers said it is too early to know whether any of the proposals will be successful until the Legislature convenes in January and sees figures of state revenue. Otter issued a second round of budget cuts this week, bringing the total to 4 percent, or \$130 million, of the current fiscal year.

"We'll take a look at them," House Assistant Majority Leader Scott Bedke, R-Oakley, said of the proposals. "The proposals reflect the economic times, but it also recognizes the fact that we have infrastructure we've got to maintain."

During the 2008 Legislature, lawmakers and Otter failed to agree on a funding package to address ITD's estimated \$240 million annual shortfall. The agency

is exempt from budget cuts because it doesn't receive funding from the general fund and relies on user-fees, such as registration fees.

"You're going to have to have broad agreement on the concept," Bedke said when asked why's needed for something to pass.

"There's general agreement — general reluctant agreement — that our transportation dollars don't go as far as they used to, but we have an obligation to maintain our road system."

Rep. Leon Smith, R-Twin Falls, a former chairman of the Idaho Transportation Board who sits on the House transportation committee, is scheduled to meet with the ITD Monday about funding issues.

He commended Otter for starting conversation, but said it's too early to say whether what lawmakers will see in a month, aside from a proposal to raise the gas tax.

"There's nothing concrete yet," he said.

Sen. Dean Cameron, R-Rupert, and co-chairman of the state's budgeting panel applauded Otter for addressing the issue, while noting that how things will pan out is unclear.

But he said any new revenue must go toward road construction, not administration or equipment, and added that the Legislature needs to allow Ada and Canyon counties the ability to pass local-option taxes to allow ITD to address other issues.

Officials take aquifer plan to the public

Plan could cost \$100 million in first 10 years

By Nita Poppo
Times-News writer

It'll cost them, they said. But Magic Valley residents who attended a public meeting on a plan to save the Eastern Snake Plain Aquifer largely seemed to agree it's worth the cost.

Members of the Idaho Water Resource Board, Idaho Department of Water Resources and the advisory committee and consulting firm that helped develop the plan gave a presentation on their proposal Thursday evening in Twin Falls, about one month after the water board released a draft version.

The plan could cost as much as \$100 million in its first 10 years, and is needed to address the problems caused by the decline of the

Speak up
Comments on the CAMP proposal are being accepted through Jan. 5. Written comments can be sent to IDWRinfo@idwr.idaho.gov or Idaho Department of Water Resources, Attn: Sandra Thiel, P.O. Box 83720, Boise, ID 83720-0098

aquifer; water board officials said last month.

The plan lists a number of ways to put water back into the aquifer while addressing water shortages seen by users across its length — most of south-central and southeastern Idaho. The end goal is to change the use of 600,000 acre-feet of water.

Most of the speakers Thursday were members of the advisory committee, including Randy MacMillan, vice president of research and environmental affairs for Clear Springs Foods. He said his company is remaining neutral for the moment on the Comprehensive Aquifer Management Plan proposal. He said he himself

has endorsed it, and told water board Chairman Jerry Rigby of the committee's concern that legislators or others may significantly change it this spring.

Vince Alberdi, former manager of the Twin Falls Canal Company and also a committee member, shared similar concern about the Legislature, acknowledging that the plan isn't perfect but offers practical solutions.

"It would be very easy to put it on the cabinet and say, 'We'll wait for a better day, and when that better day comes, we'll fund it,'" Alberdi cautioned.

The canal company is supporting the plan, current manager Brian Olmstead said.

Though people shared concerns about the plan, none seemed largely against it. Dan Schaeffer, vice-chairman of the board of the A&B Irrigation District and a committee member, said

A&B is neutral for the moment but supports the general plan. And Linda Lemmon, "an alternate" member of the committee who uses water from several different sources, said she would like to see domestic well users contribute more to the plan and that a proposal for them to pay a small amount toward the plan each year should be put back in.

State water officials said the meeting was better attended than one held in Pocatello on Tuesday evening.

A third meeting is planned for Idaho Falls on Wednesday evening.

The public comment period ends Jan. 5. IDWR staff will give the water board a list of suggested changes to the plan, and members intend to present a final version of the plan to legislators in the second half of January.

www.magicvalley.com

Committee assignments for M.V. legislators

- House**
- Steve Hartgen, R-Twin Falls — Education; Commerce and Human Resources; Environment, Energy and Technology
 - Jim Patrick, R-Twin Falls — Business; Appropriations; Agricultural Affairs
 - Leon Smith, R-Twin Falls — Judiciary and Rules (vice-chairman); Transportation and Defense; Revenue and Tax
 - Sharon Block, R-Twin Falls — Health and Welfare (chairwoman); Education
 - Fred Wood, R-Twin Falls — Appropriations; Health and Welfare; Resources and Conservation
 - Scott Bedke, R-Oakley — (Assistant majority leader) — Transportation and Defense; Resources and Conservation; Revenue and Taxation
 - Maxine Ball, R-Jerome — Appropriations (chairwoman); Resources and Conservation
 - Bert Stevenson, R-Rupert —

- Resources and Conservation (chairman); Agricultural Affairs; State Affairs
 - Donna Pence, D-Gooding — Resources and Conservation; Education
 - Wendy Jaquet, D-Ketchum — Appropriations; Health and Welfare; Judiciary, Rules and Administration
- Senate**
- Bert Brackett, R-Rogerson — Appropriations; Health and Welfare
 - Cliff Stennett, D-Ketchum — (Minority Leader), State Affairs; Resources and Environment
 - Denton Darrington, R-Declo — Judiciary and Rules (chairman); Health and Welfare; State Affairs
 - Dean Cameron, R-Rupert — Finance (chairman), Commerce and Human Resources; Resources and Environment
 - Chuck Colner, R-Twin Falls — Commerce and Human Resources (vice-chairman); Resources and Environment

Rant

Continued from page A1

Abrahamson said Colorado's statute applied precisely to what Welch did.

"This is what the legislature of the state of Colorado has determined is criminal," Abrahamson said. "We're obligated to enforce the laws in the state of Colorado."

Welch could not be reached for comment. His attorney, Michael Liggett, has a policy of not speaking with reporters, according to an assistant at his law office.

Several other lawyers said the case should be handled in civil court. Bringing the government into the dispute infringes on free speech, they said.

"Being a jerk isn't necessarily grounds for felony prosecution," said Mark Silverstein, legal director of the American Civil Liberties Union of Colorado.

Gregory Lisby, a communications professor at Georgia State University, has tracked criminal libel prosecutions. He said the states that retain such laws — there are 17, according to free-speech groups — simply have failed to update legislation that stems from 15th-century English common law.

Criminal libel prosecutions are discharges when a scalpel would do the same trick," Lisby said.

His research has shown the number of criminal libel cases dropping, but the internet

could reverse that, Lisby said. People don't realize that scathing postings or e-mails can make them liable for defamation charges.

"More and more people view the online world as a free-rant place," Lisby said. "They think it's part for the course, but they're setting themselves up for lawsuits" or prosecution.

In civil libel cases, truth is the best defense, and the dead cannot be libeled. But Colorado's criminal statute holds that it is illegal to "blacken the memory of one who is dead." "Truth is not a defense in those cases, nor in those that 'expose the natural defects of one who is alive.'"

The state Supreme Court upheld the law in 1989 but warned that its provisions would not apply to constitutionally protected political speech. In 2006, the ACLU successfully blocked Greeley police from using the statute to pursue a blogger who posted material critical of a professor at the University of Northern Colorado. The ACLU argued that prosecution would violate the First Amendment.

According to police and court records, Welch's post upheld the law in 1989 but warned that its provisions would not apply to constitutionally protected political speech. In 2006, the ACLU successfully blocked Greeley police from using the statute to pursue a blogger who posted material critical of a professor at the University of Northern Colorado. The ACLU argued that prosecution would violate the First Amendment.

Give the gifts that give more, for less.
With 3G phones that can do it all.

Camera
Buy 1, Get 1 FREE
\$49.99
LG VX350C 299.99 2-yr. price - \$50 mail-in rebate debit card. Includes a Nationwide Calling Plan and new 2-yr. activation.

All-in-One
\$99.99
149.99 2-yr. price - \$50 mail-in rebate debit card. Includes a Nationwide Calling Plan and new 2-yr. activation.

Titanium
\$129.99
Our lowest price ever!
\$179.99 2-yr. price - \$50 mail-in rebate debit card. With a Nationwide Calling Plan and new 2-yr. activation.

They do all this and so much more!

- Music Player: Get VCAST Music with Rhapsody!
- GPS Navigation: Add VZ Navigator for directions.
- Digital camera: Snap and send pics via video.

Everyone wants America's Most Reliable Wireless Network.

Call 1.800.2.JOIN.IN Click 24/7 verizonwireless.com Shop extended Holiday store hours!

VERIZON WIRELESS COMMUNICATIONS STORES
Open 7 days a week. Technicians available at select locations.

BUSINESS CUSTOMERS
1-800-VZW-4BIZ
verizonwireless.com/smallBusiness

AUTHORIZED RETAILERS
Equipment prices, rebates & return policy vary by location. Authorized Retailers may impose additional equipment-related charges, including cancellation fees.

BOISE
My Building 208 887-9485

BURLEY
My Building 208 678-1645
Wireless Innovations 208 678-5800

JEROME
Wireless Innovations 208 644-9100

HAYLEIGH
Wireless Innovations 208 788-2501

MOUNTAIN HOME
Wireless Innovations 208 587-1100

TWIN FALLS
Wireless Innovations 208 735-9090

In Collaboration with **Alcatel-Lucent**

Visit the Verizon Wireless Store inside one of the area's following Circuit City locations:
Boise • Idaho Falls

Our Surcharges (incl. Fed. Tax, Sec. of 11.9% Interest & Int'l) include charges (yearly quarterly, 7% Regulatory & 85% Administrative/Revolvs., & others by area) are not taxes (state): 1.088-444-1882; gov't taxes & our surcharges could add \$96-276 a year. Activation Fee: \$35.

IMPORTANT CONSUMER INFORMATION: Subject to Customer Agmt., Calling Plan, rebate form & credit approval. Up to \$125 early termination fee/line & other charges. Offers and coverage, varying by service, not available everywhere. Device capabilities, offer changes & conditions apply. Includes debit card that can be loaded & expires in 12 months. Supports the trademark of Panasonic, Inc. and other items by Verizon Wireless. VCAST Music with Rhapsody: Subject to VCAST Music with Rhapsody terms and conditions. Rhapsody and the Rhapsody logo are trademarks and registered trademarks of RealNetworks, Inc. Coverage not available everywhere. Limited-time offer. While supplies last. Network details and coverage maps at verizonwireless.com. In CA: Sales based on full retail price of phone. © 2008 Verizon Wireless. 72996

AROUND THE WORLD

WASHINGTON
Senate skeptical about
carmakers' bailout plea

WASHINGTON — Desperate U.S. automakers ran into fresh obstacles as skeptical lawmakers Thursday...

And that wasn't all the unwelcome news. Congressional officials said one leading proposal...

The auto executives pleaded with lawmakers at a contentious Capitol Hill hearing...

Christopher Dodd, Democratic chairman of the Senate Banking Committee...

Democrats want a more assertive Obama

WASHINGTON — Democrats are growing impatient with President-elect Barack Obama's refusal to inject himself in the major economic crises confronting the country.

Obama has sidestepped some policy questions by saying there is only one president at a time. But the dodge is wearing thin. "He's going to have to be more assertive than he's been," House Financial Services Committee Chairman Barney Frank...

U.S. mulls using drug law in Blackwater case

WASHINGTON — Blackwater, Worldwide guards involved in the deadly 2007 Baghdad shooting of Iraqi civilians could face mandatory 30-year prison sentences under an aggressive anti-drug law being considered as the Justice Department readies indictments, people close to the case said.

Charges could be announced as early as Monday for the shooting, which left 17 civilians dead and strained U.S. relations with the bedgiving Iraqi government.

MINNESOTA
2 teen girls charged in nursing resident abuse

ALBERT LEA — Two teenage girls who worked at a nursing home have been charged with abuse, accused of taunting, spitting on and groping residents who suffered from Alzheimer's disease.

According to the criminal complaint, filed Monday, 19-year-old Brianna Brotzman and 18-year-old Ashton Larson laughed earlier this month, poked and groped their breasts and genitals, and at times mocked them until they screamed.

Broetzman and Larson, who worked as part-time aides at the home, have been charged as adults.

Larson's father disputed the charges against his daughter in a statement issued to and read on NBC's "Today" show Thursday. "Not all of the charges are as they appear. Much of this has been distorted by the news media," Michael Larson said in the statement.

"My daughter was doing nothing more than performing the duties of her job," Broetzman and Larson are charged with assault, abuse of a vulnerable adult by a caregiver, abuse of a vulnerable adult with sexual contact, disorderly conduct and failing to report suspected maltreatment.

INDIA
Air-attack warning unsettles India

NEW DELHI — India remains on edge amid reports of a threat of an attack by air, adding to people's fears of vulnerability after the brazen rampage in November by gunmen who landed on Mumbai's famed shoreline by boat.

The new threat was contained in an e-mailed warning that referred to the anniversary Saturday of one of the inflammatory events in India's recent history: the 1982 destruction by Hindu mobs of a centuries-old mosque in the north Indian town of Ayodhya.

Survivors of the November attack in Mumbai, which left more than 170 people dead, have been quoted as saying that at least one of the gunmen cited revenge for what happened in Ayodhya as a motive behind the coordinated assault on luxury hotels and other busy spots in India's biggest metropolis.

Early today, Indian commandos combed New Delhi's international airport after reports that shots had been fired there. The cause of the scare remained unclear, but an airport official reached by telephone said that no one had been killed.

IDAHO
Federal agents arrest 16 workers in Nampa

NAMPA — Federal agents with U.S. Immigration and Customs Enforcement have arrested more than a dozen Mexican nationals suspected of working illegally in southwestern Idaho.

The 16 workers employed by Idaho Truss, a company that manufactures wood products in Nampa, were arrested on Thursday as part of a federal investigation.

The agency says the investigation began with a review of the employment records of workers helping build mill-

tary housing at the Mountain Home Air Force Base. The records showed some of the workers may have used fake documents to secure their jobs, including false Social Security numbers. The 16 men will remain in federal custody until they appear before an Immigration judge.

ICB Spokeswoman Lori Dankers wouldn't say if authorities were working on similar cases in the Magic Valley. — From wire services

Happy Holidays to All of Our Customers & Friends ARMA Beauty Salon 537 Main Ave. East Twin Falls • 734-8380

TFHS Drama Department's Dessert Theater December 11th-13th 2008 7:30pm Curtain Roper Auditorium \$5 Admission

PREVIEW DAY IS FRIDAY: SHOP 8AM-11PM. ONE DAY SALE IS SATURDAY: SHOP 7AM-11PM.

ONE DAY SALE GREAT SAVINGS AND VERY MERRY GIFT IDEAS FOR EVERYONE.



50%-55% OFF + EXTRA 10% OFF SPORTSWEAR FOR A TOTAL SAVINGS OF 55%-65% SPECIAL 59.99 50% OFF + EXTRA 10% OFF SWEATERS FOR A TOTAL SAVINGS OF 55% SPECIAL 59.99 50% OFF + EXTRA 10% OFF SWEATERS FOR A TOTAL SAVINGS OF 55% SPECIAL 59.99 50% OFF + EXTRA 10% OFF ALL FASHIONABLE JACKETS FOR A TOTAL SAVINGS OF 55% SPECIAL 59.99

SPECIAL 49.99 18K gold and sterling silver heart in sterling silver. Reg. \$160, sale \$80. SPECIAL 59.99 Semiprecious gemstone and diamond-accented bracelet in 18K gold over sterling silver. Reg. \$180, sale \$90. SPECIAL 59.99 Sapphire and diamond-accented bracelet in sterling silver. Reg. \$200, sale \$100. SPECIAL 39.99 1/4 ct. tw. diamond in sterling silver. Reg. \$150, sale \$75.

now TAKE AN EXTRA \$5 AND \$10 OFF TO SAVE 60%-90% OFF. FINAL COST 4.99, 5.00 OFF FINAL COST 9.99, 10.00 OFF FINAL COST 19.99, 20.00 OFF FINAL COST 29.99

Save 20% more the day you open a Macy's account - plus the next day. That's 20% off our regular and sale price! Our usual non-coupon discount is 15%. Now through December 24. And there are even more rewards to earn! Subject to credit approval. Excludes services, certain licensed departments and Macy's Gift Cards. On furniture, mattresses and area rugs, the non-coupon savings is limited to \$100. Visit your local Macy's for details.

the magic of macy's macys.com Help the community, earn Rewards. A \$25 enrollment fee gets you 10% Rewards on most Macy's purchases made with your Macy's Card through 12/31/08. We'll donate \$10 of that fee to charity. For terms and conditions, see store.

EDITORIAL

Vailas' medical school enthusiasm doesn't trump state economics

Idaho State University doesn't offer a degree in magic, but maybe it should. ISU President Art Vailas is plowing ahead with ambitious plans to offer Idaho's first medical degree program, despite an order by Gov. C.L. "Butch" Otter this week to cut another 3 percent from state budgets already whittled down by 1 percent in September.

"We're not asking the state for money," he said Wednesday. That's good. There isn't any. ISU's med school would require \$21 million in startup money, which the university plans to cover with a loan, and would plan to enroll 60 medical students each year beginning as soon as 2012, Vailas said.

Nor has anyone in authority actually told Vailas that ISU can have a med school. Undaunted, the president plans to pitch it to the state Board of Education next year. If it passes, ISU could accept students as soon as 2012.

"At some point, somebody has to give us the green light," Vailas said.

Actually, they don't. There's deep and abiding skepticism among Idahoans who don't live in Bannock County that the state can afford a med school, or actually needs one.

Last year, Vailas pushed lawmakers to spend \$300,000 to study creating the state's first medical degree program. The report, produced by an independent Florida-based consulting firm, concluded that Idaho could address a growing shortage of doctors by adding a medical school or by expanding residency programs.

Or Idaho could opt for an even more cost-effective alternative: Buying more slots for Idahoans in the medical school at the University of Washington and the University of Utah.

Under Vailas' plan, ISU would train medical students through existing health science courses during their first two years. Students would spend their last two years at clinical sites in Idaho for hands-on training.

Give the president credit for thinking outside the box, but it's not possible for Idaho to have a med school without a large and ongoing investment by the taxpayers.

And the consent of the folks responsible for public education in Idaho.

Our view: Idaho State University President Art Vailas simply won't take no for an answer about starting a medical school at the university. **What do you think?** We welcome viewpoints from our readers on this and other issues.

Stop pigging out

Sure, there probably was some giving of thanks, but that's not what anyone remembers. What we remember is the ugly, vicious, annual Thanksgiving eating contests between me and my cousins. The kind that taught me, and perhaps now the scientific community, that if you consume enough calories, you will actually black out just like you're drunk. Drunk on pig.



JOEL STEIN

We are a nation with a massive pie hangover, waking up after three decades of overconsumption. The great problems facing us — the economy and obesity — have the same cause: lack of self-control. We're eating more calories than we burn and spending more money than we earn. Only instead of doing it to impress our cousins, we're doing it in the hopes of getting a really show on Bravo.

Sure, we have stopped spending for the moment, now that our jobs are in danger, our houses worth less and credit card offers aren't filling our mailboxes. But as soon as things start looking up, we will revert to the overeating, overspending ways.

The first person who pointed out this obvious connection to me was my friend Matt Tupper. He's president of the organic-gate company Potemkin. Wonderful, and usually votes Republican solely to lower his taxes. But this year he leaned Democratic, because he figured Barack Obama stands the best chance of breaking the overeating, overspending cycle. Also, Matt has done a lot of troublesome renovations, which required dealing with



plumbers. John McCain would have gotten a lot more votes if he'd latched onto Joe the Lawyer Who Threatens Contractors.

"The problem is starting us in the face. Who are the people driving SUVs they can't afford? The ones who weigh 300 pounds," Matt says.

Though I'm pretty sure that if Matt left his health food company to be chief executive of McDonald's, he'd place the blame for the recession on the fact that our children weren't eating enough meals that made them happy. In addition to creating public infrastructure jobs, Matt believes that Obama also will have to level with Americans and tell us that we are disgusting pigs. Only he'll say it more like, "As a great people who have triumphed over tyranny from abroad, over bread lines at home, over our own prejudices that divided and weakened us, we must meet our greatest challenge: to stop being such disgusting pigs."

Sure, the government can combat the obesity epidemic by ending agriculture subsidies for corn and sugar and creating some for fruits and

vegetables. It can encourage personal savings with tax incentives and a national sales tax; it might slow global warming with a massive increase in the gasoline tax. But what we really need is a leader who will tell us off. Why Matt thinks Obama is the man for this task confuses me. I would have given this one to the angry old man.

We don't need to ask what our country can do for us, or what we can do for our country, but what we can stop buying for ourselves. We all need to change our behavior away from competitive spending, so that when my mom's husband mocks my 4-year-old computer and CRT television, society makes him feel overindulgent instead of making me feel inadequate. Also, we need to change our behavior so that my dad is the mean parent, eliminating adjustable-rate mortgages, zero-percent financing and anything smothered in cheese, deep fried and then

smothered in cheese and deep fried again. He's going to have to somehow enable Americans to maintain the unfounded optimism that has made us the richest country in the world, while installing some long-term thing that will keep us there. I recommend some kind of song by Justin Timberlake about jogging while picking up coins on the sidewalk in some kind of sexy way, but I'm guessing the president-elect can come up with better ideas.

The truth is, I never feel more lucky to be an American than when I'm gorging myself at Thanksgiving, piling my shopping cart high at Costco, or gorging myself on stuff from my shopping cart at Costco. But Americans can't keep doing that every week.

Of course, that's pretty easy for me to say after I've doubled-fisted fried turkey into my mouth just to mess out my cousins. Turkey I didn't even pay for.

Joel Stein is a columnist for the Los Angeles Times. Write to him at jstein@latimes.com.

LETTERS TO THE EDITOR

A church member's opinion about immorality

I am not a spokesman for my church; this is just one member's serious opinion. In reference to James Tidmarsh's letter, your choice of a sexual lifestyle is outside the bonds of our standards the same as fornication and adultery. The LDS Church (my church) stands against these immoral practices. They are not just about exclusions; it is about our survival. We cannot capitulate.

You probably do not see the far-reaching outcome. For you see, we are an organization that hires people. When the day comes that the nation's standard is same-sex marriage, it will put the state in the position of enforcing the equality of standards. Therefore, the state will have to punish the LDS Church by forcing homosexuals into our janitors, secretaries, food

service, etc. We will not do that.

The state will start to remove things like our tax-exempt status (it has already been done in New Jersey against the Methodists). They will likely even take our property. I'm sure these are things that are beyond your intentions of living our lifestyle, but for us, they are very real threats. As for me, you are always welcome in our chapels for worship; however, if you practice homosexuality, you cannot participate in leadership positions. We are tolerant but we have standards. TOM PETERS Jerome

Tax money should help needy not murdered

We were under the impression when you are sentenced for murder you lose your rights. Why should the taxpayers

have to pay court costs, transportation to and from court for her to return for every little thing? In a previous article, she complained she could not pay the debt, but who gives her the 20 cents an hour? The family of Ray and the taxpayers. Take the taxpayers' money and help the ones who are neediest instead of giving it to a person who committed a crime and knows where her next meal is coming from, where she will sleep and be warm. If she needs more money for her personal items, where is Jensen's family?

The family of Ray has put money out to raise the six children through the past years because Jensen took the life of their mother (the youngest who saw it happen still has nightmares and probably will for a long time). She took the rights of these six children of having their mother here with them.

Knowing she hurt her own family also, all she can say is "sorry." She was a nurse, someone should look into the places where she worked to see if she has harmed anyone else's loved one.

Anyone feeling that a person who committed murder, has rights, let them deal with the nightmares, comments and questions of the public.

For the family of Ray, we cannot comprehend having to pay for this person to keep returning to court for rights and little things which only cause grief to our family. Jensen has nothing more to come!

We say this, "She made her bed; let her lay in it." MARILYN SNOW Burley

(Editor's note: Marilyn Snow is an aunt of Diane Roy. The letter also was signed by two other aunts, Shirley Clark of Burley and Debbie Hawley of Winchester. Call.)

TIMES-NEWS

Brad Hurd . . . publisher Steve Crump . . . opinion editor
The members of the editorial board and writers of editorials are Brad Hurd, James G. Wright, Steve Crump, Bill Eitzenburg and Ruth S. Pierce.

QUOTABLE

"We hope the U.S. side will take the necessary measures to stabilize the economy and financial markets, as well as to guarantee the safety of China's assets and investments in the United States."

— Vice Premier Wang Qishan to U.S. Treasury Secretary Henry Paulson and other U.S. officials as the two sides opened economic talks at the Strategic Economic Dialogue.

THE LIGHTER SIDE OF POLITICS

Doonesbury



By Garry Trudeau



Mallard Fillmore



By Bruce Tinsley

LETTERS TO THE EDITOR

Don't bash VFW for strict membership requirements

In response to the letter published on Dec. 2, to Susan Bergen, Yeoman First Class, USCG, retired.

You have unfairly mischaracterized the veterans organizations in your comments. I cannot speak to the complaint about the American Legion except to say that I personally know of female veterans who are active members in this great organization.

As to the Veterans of Foreign Wars: This group was (congressionally) chartered by Congress to provide membership for a very select few who served in a "foreign war, insurrection or expedition."

The basic premise that veterans who did not receive medical care and such after returning home from combat. Today, the VFW is extremely active in veterans affairs and can be credited, as well as the American Legion, with making the Veterans Administration system more responsive to veterans needs and improved health care.

So why give the VFW a bad reputation because you do not meet eligibility requirements? The VFW in southern Idaho has many participating female veterans continuing to serve our community, including honor details and community projects. VFW posts in Twin Falls, Wendell and Butte have female veterans in leadership positions as well as other posts throughout the state. The state of Idaho VFW is the first in the nation, within the VFW, to have a "female veteran of the year" program.

This program is the model for the rest of the nation as each state implements theirs. I hope this lays to rest the phrases "old boys network" and "discrimination."

As a case in point, let's look at a couple of other groups. Do you think you should be a member of the Military Order of the Purple Heart or the Marine Corps League? No, of course not, because you do not meet their eligibility requirements (nor do I).

I would never denigrate the services of another veteran. We all had our duties and we did them. I know fully your duties as a Navy yeoman and I only wish you qualified for VFW membership because your talents and skills as an administrative specialist would be invaluable. I personally thank you for your service and commitment to our Navy and Coast Guard; however, this alone does not qualify you for membership in this Veterans Service Organization.

You are not denied membership; you simply do not qualify.

ROBERT S. JACKSON JR.
Twin Falls
(Editor's note: Robert Jackson Jr. is retired from the Navy as a chief personnel manager and commander for District 6 of the Veterans of Foreign Wars).

Pay cut is better than being unemployed

Employers, in these hard times please don't lay 20 percent of your employees off. Take one working day per week off of all your people. You can live with 20 percent less money by using back on things. But to lose all your income is devastating. Consider this!

RAY MANLEY
Twin Falls

Tell us what you think

ON PAPER: The Times-News welcomes letters from readers on subjects of public interest. Please limit letters to 300 words. Include your signature, mailing address and phone number. Writers who sign letters with false names will be permanently barred from publication. Letters may be brought to our Twin Falls office; mailed to P.O. Box 548, Twin Falls, ID 83303; faxed to (208) 734-5538; or e-mailed to letters@magicvalley.com.

Will spending today hurt tomorrow's economy?

Right now there's intense debate about how aggressive the U.S. government should be in its attempts to turn the economy around. Many economists, myself included, are calling for a very large fiscal expansion to keep the economy from going into free fall. Others, however, worry about the burden that large budget deficits will place on future generations.

But the deficit worriers have it all wrong. Under current conditions, there's no trade-off between what's good in the short run and what's good for the long run: strong fiscal expansion would actually enhance the economy's long-run prospects.

The claim that budget deficits make the economy poorer in the long run is based on the belief that government borrowing "crowds out" private investment—that the government, by issuing lots of debt, drives up interest rates, which makes businesses unwilling to spend on new plant and equipment, and that this in turn reduces the economy's long-run rate of growth.

Under normal circumstances there's a lot to this argument. But circumstances right



PAUL KRUGMAN

now are anything but normal. Consider what would happen next year if the Obama administration gave in to the deficit hawks and scaled back its fiscal plans.

Would this lead to lower interest rates? It certainly wouldn't lead to a reduction in short-term interest rates, which are more or less controlled by the Federal Reserve. The Fed is already keeping those rates as low as it can—virtually at zero—and won't change that policy unless it sees signs that the economy is threatening to overheat. And that doesn't seem like a realistic prospect any time soon.

What about longer-term rates? These rates, which are already at a half-century low, mainly reflect expected future short-term rates. Fiscal austerity could push them even lower—but only by creating expectations that the economy would remain deeply depressed for a long time, which would reduce, not increase, pri-

ivate investment. The idea that tight fiscal policy when the economy is depressed actually reduces private investment isn't just a hypothetical argument: It's exactly what happened in two important episodes in history.

The first took place in 1937, when Franklin Roosevelt mistakenly heeded the advice of his own era's deficit worriers. He sharply reduced government spending, among other things cutting the Works Progress Administration in half, and also raised taxes. The result was a severe recession, and a steep fall in private investment.

The second episode took place 60 years later, in Japan. In 1996-97, the Japanese government tried to balance its budget, cutting spending and raising taxes. And again the recession that followed led to a steep fall in private investment.

Just to be clear, I'm not arguing that trying to reduce the budget deficit is always bad for private investment. You can make a reasonable case that Bill Clinton's fiscal restraint in the 1990s helped fuel the great U.S. investment boom of that decade, which in turn helped cause a resur-

gence in productivity growth.

What made fiscal austerity such a bad idea both in Roosevelt's America and in 1990s Japan were special circumstances: In both cases, the government pulled back in the face of a liquidity trap, a situation in which the monetary authority had cut interest rates as far as it could, yet the economy was still operating far below capacity.

And we're in the same kind of trap today—which is why deficit worriers are misplaced. One more thing: Fiscal expansion will be even better for America's future if a large part of the expansion takes the form of public investment—of building roads, repairing bridges and developing new technologies, all of which make the nation richer in the long run.

Should the government have a permanent policy of running large budget deficits? Of course not. Although public debt isn't as bad as many people believe—it's basically money we owe to ourselves

—in the long run the government, like private individuals, has to match its spending to its income.

But right now we have a fundamental shortfall in private spending. Consumers are rediscovering the virtues of saving at the same moment that businesses, burned by past excesses and hamstringed by the troubles of the financial system, are cutting back on investment. That gap will eventually close, but until it does, government spending must take up the slack. Otherwise, private investment, and the economy as a whole, will plunge even more.

The bottom line, then, is that people who think that fiscal expansion today is bad for future generations have got it exactly wrong. The best course of action, both for today's workers and for their children, is to do whatever it takes to get this economy on the road to recovery.

Paul Krugman is a columnist for The New York Times. Write to him at pkrugman@nytimes.com.

Check out what's new online at www.magicvalley.com

OUR PREVIEW DAY IS FRIDAY, SHOP 8AM-11PM. OUR ONE DAY SALE IS SATURDAY, SHOP 7AM-11PM.

ONEDAYSALE

30% to 70% off home essentials and so much more

<p>30% OFF Entire stock of stand mixers. Choose from KitchenAid, Sunbeam and more. Reg. \$9.99-\$99.99, previously \$9.99-\$49.99, sale \$6.99-\$41.99.</p>	 <p>SPECIAL 4.99 Cuisinart open stock cutlery, 3" santitas, 3.5" parer or shears. Reg. \$9.99 each, sale \$7.99 each.</p>	<p>IT'S OUR GREATEST BED & BATH EVENT</p> <p>TODAY AND TOMORROW ONLY! DECEMBER 5-6 SAVE ON ALL BED & BATH—INCLUDING DESIGNER COLLECTIONS BUY ANY BED OR BATH ITEM ON SALE, GET A SECOND ITEM OF YOUR CHOICE AT</p> <p>50% OFF* SALE PRICES</p> <p>IT'S YOUR CHOICE! ANY COMBINATION INCLUDES: ALL SHEETS, ALL PILLOWS, ALL COMFORTERS, ALL COMFORTER COVERS, ALL BLANKETS, ALL TOWELS, ALL BATH RUGS, ALL MATTRESS PADS AND MORE.</p> <p><small>CLEARANCE AND SPECIALS ARE EXCLUDED</small></p>
 <p>SPECIAL 50% OFF + EXTRA 10% OFF already-reduced prices Only at Macy's Entire stock of Holiday Lane and Martha Stewart Collection trim and holiday decor. Orig. \$2.25, was 1.00-1.48.50*, special \$0-1.23.75.</p>	 <p>SPECIAL 17.99 Black & Decker steam press iron with anti-drip system and vertical steam surge. Reg. \$29.99, sale \$19.99*.</p>	
 <p>SPECIAL 79.99 Only at Macy's Pacific Coast Valiant 4-cup luggage set. Reg. \$200, sale \$99.99*.</p>	 <p>SPECIAL 99.99 Cuisinart 11-cup food processor features a 625-watt motor and shatterproof, Lexan™ work bowl. EDCLRS. Reg. \$199.99, sale \$129.99*.</p>	
 <p>SPECIAL 19.99 Cuisinart 3.5-qt. multi-purpose pot with aluminum and stainless steel base for fast, even heating. Glass lid. Reg. \$39.99, sale \$29.99*.</p>	 <p>SPECIAL 19.99 Presto 20" nonstick electric griddle. Cool-touch base and slide-out drip tray. #7030. Reg. \$39.99, sale \$29.99*.</p>	

EXTRA 40% OFF ALREADY-REDUCED HOME CLEARANCE PRICES

the magic of **macy's**
macy.com

To find the store nearest you, visit macy.com.
*Some items may be priced at 50% off. Some items may be priced at 70% off. Some items may be priced at 80% off. Some items may be priced at 90% off. Some items may be priced at 100% off. Some items may be priced at 110% off. Some items may be priced at 120% off. Some items may be priced at 130% off. Some items may be priced at 140% off. Some items may be priced at 150% off. Some items may be priced at 160% off. Some items may be priced at 170% off. Some items may be priced at 180% off. Some items may be priced at 190% off. Some items may be priced at 200% off. Some items may be priced at 210% off. Some items may be priced at 220% off. Some items may be priced at 230% off. Some items may be priced at 240% off. Some items may be priced at 250% off. Some items may be priced at 260% off. Some items may be priced at 270% off. Some items may be priced at 280% off. Some items may be priced at 290% off. Some items may be priced at 300% off. Some items may be priced at 310% off. Some items may be priced at 320% off. Some items may be priced at 330% off. Some items may be priced at 340% off. Some items may be priced at 350% off. Some items may be priced at 360% off. Some items may be priced at 370% off. Some items may be priced at 380% off. Some items may be priced at 390% off. Some items may be priced at 400% off. Some items may be priced at 410% off. Some items may be priced at 420% off. Some items may be priced at 430% off. Some items may be priced at 440% off. Some items may be priced at 450% off. Some items may be priced at 460% off. Some items may be priced at 470% off. Some items may be priced at 480% off. Some items may be priced at 490% off. Some items may be priced at 500% off. Some items may be priced at 510% off. Some items may be priced at 520% off. Some items may be priced at 530% off. Some items may be priced at 540% off. Some items may be priced at 550% off. Some items may be priced at 560% off. Some items may be priced at 570% off. Some items may be priced at 580% off. Some items may be priced at 590% off. Some items may be priced at 600% off. Some items may be priced at 610% off. Some items may be priced at 620% off. Some items may be priced at 630% off. Some items may be priced at 640% off. Some items may be priced at 650% off. Some items may be priced at 660% off. Some items may be priced at 670% off. Some items may be priced at 680% off. Some items may be priced at 690% off. Some items may be priced at 700% off. Some items may be priced at 710% off. Some items may be priced at 720% off. Some items may be priced at 730% off. Some items may be priced at 740% off. Some items may be priced at 750% off. Some items may be priced at 760% off. Some items may be priced at 770% off. Some items may be priced at 780% off. Some items may be priced at 790% off. Some items may be priced at 800% off. Some items may be priced at 810% off. Some items may be priced at 820% off. Some items may be priced at 830% off. Some items may be priced at 840% off. Some items may be priced at 850% off. Some items may be priced at 860% off. Some items may be priced at 870% off. Some items may be priced at 880% off. Some items may be priced at 890% off. Some items may be priced at 900% off. Some items may be priced at 910% off. Some items may be priced at 920% off. Some items may be priced at 930% off. Some items may be priced at 940% off. Some items may be priced at 950% off. Some items may be priced at 960% off. Some items may be priced at 970% off. Some items may be priced at 980% off. Some items may be priced at 990% off. Some items may be priced at 1000% off. Some items may be priced at 1010% off. Some items may be priced at 1020% off. Some items may be priced at 1030% off. Some items may be priced at 1040% off. Some items may be priced at 1050% off. Some items may be priced at 1060% off. Some items may be priced at 1070% off. Some items may be priced at 1080% off. Some items may be priced at 1090% off. Some items may be priced at 1100% off. Some items may be priced at 1110% off. Some items may be priced at 1120% off. Some items may be priced at 1130% off. Some items may be priced at 1140% off. Some items may be priced at 1150% off. Some items may be priced at 1160% off. Some items may be priced at 1170% off. Some items may be priced at 1180% off. Some items may be priced at 1190% off. Some items may be priced at 1200% off. Some items may be priced at 1210% off. Some items may be priced at 1220% off. Some items may be priced at 1230% off. Some items may be priced at 1240% off. Some items may be priced at 1250% off. Some items may be priced at 1260% off. Some items may be priced at 1270% off. Some items may be priced at 1280% off. Some items may be priced at 1290% off. Some items may be priced at 1300% off. Some items may be priced at 1310% off. Some items may be priced at 1320% off. Some items may be priced at 1330% off. Some items may be priced at 1340% off. Some items may be priced at 1350% off. Some items may be priced at 1360% off. Some items may be priced at 1370% off. Some items may be priced at 1380% off. Some items may be priced at 1390% off. Some items may be priced at 1400% off. Some items may be priced at 1410% off. Some items may be priced at 1420% off. Some items may be priced at 1430% off. Some items may be priced at 1440% off. Some items may be priced at 1450% off. Some items may be priced at 1460% off. Some items may be priced at 1470% off. Some items may be priced at 1480% off. Some items may be priced at 1490% off. Some items may be priced at 1500% off. Some items may be priced at 1510% off. Some items may be priced at 1520% off. Some items may be priced at 1530% off. Some items may be priced at 1540% off. Some items may be priced at 1550% off. Some items may be priced at 1560% off. Some items may be priced at 1570% off. Some items may be priced at 1580% off. Some items may be priced at 1590% off. Some items may be priced at 1600% off. Some items may be priced at 1610% off. Some items may be priced at 1620% off. Some items may be priced at 1630% off. Some items may be priced at 1640% off. Some items may be priced at 1650% off. Some items may be priced at 1660% off. Some items may be priced at 1670% off. Some items may be priced at 1680% off. Some items may be priced at 1690% off. Some items may be priced at 1700% off. Some items may be priced at 1710% off. Some items may be priced at 1720% off. Some items may be priced at 1730% off. Some items may be priced at 1740% off. Some items may be priced at 1750% off. Some items may be priced at 1760% off. Some items may be priced at 1770% off. Some items may be priced at 1780% off. Some items may be priced at 1790% off. Some items may be priced at 1800% off. Some items may be priced at 1810% off. Some items may be priced at 1820% off. Some items may be priced at 1830% off. Some items may be priced at 1840% off. Some items may be priced at 1850% off. Some items may be priced at 1860% off. Some items may be priced at 1870% off. Some items may be priced at 1880% off. Some items may be priced at 1890% off. Some items may be priced at 1900% off. Some items may be priced at 1910% off. Some items may be priced at 1920% off. Some items may be priced at 1930% off. Some items may be priced at 1940% off. Some items may be priced at 1950% off. Some items may be priced at 1960% off. Some items may be priced at 1970% off. Some items may be priced at 1980% off. Some items may be priced at 1990% off. Some items may be priced at 2000% off. Some items may be priced at 2010% off. Some items may be priced at 2020% off. Some items may be priced at 2030% off. Some items may be priced at 2040% off. Some items may be priced at 2050% off. Some items may be priced at 2060% off. Some items may be priced at 2070% off. Some items may be priced at 2080% off. Some items may be priced at 2090% off. Some items may be priced at 2100% off. Some items may be priced at 2110% off. Some items may be priced at 2120% off. Some items may be priced at 2130% off. Some items may be priced at 2140% off. Some items may be priced at 2150% off. Some items may be priced at 2160% off. Some items may be priced at 2170% off. Some items may be priced at 2180% off. Some items may be priced at 2190% off. Some items may be priced at 2200% off. Some items may be priced at 2210% off. Some items may be priced at 2220% off. Some items may be priced at 2230% off. Some items may be priced at 2240% off. Some items may be priced at 2250% off. Some items may be priced at 2260% off. Some items may be priced at 2270% off. Some items may be priced at 2280% off. Some items may be priced at 2290% off. Some items may be priced at 2300% off. Some items may be priced at 2310% off. Some items may be priced at 2320% off. Some items may be priced at 2330% off. Some items may be priced at 2340% off. Some items may be priced at 2350% off. Some items may be priced at 2360% off. Some items may be priced at 2370% off. Some items may be priced at 2380% off. Some items may be priced at 2390% off. Some items may be priced at 2400% off. Some items may be priced at 2410% off. Some items may be priced at 2420% off. Some items may be priced at 2430% off. Some items may be priced at 2440% off. Some items may be priced at 2450% off. Some items may be priced at 2460% off. Some items may be priced at 2470% off. Some items may be priced at 2480% off. Some items may be priced at 2490% off. Some items may be priced at 2500% off. Some items may be priced at 2510% off. Some items may be priced at 2520% off. Some items may be priced at 2530% off. Some items may be priced at 2540% off. Some items may be priced at 2550% off. Some items may be priced at 2560% off. Some items may be priced at 2570% off. Some items may be priced at 2580% off. Some items may be priced at 2590% off. Some items may be priced at 2600% off. Some items may be priced at 2610% off. Some items may be priced at 2620% off. Some items may be priced at 2630% off. Some items may be priced at 2640% off. Some items may be priced at 2650% off. Some items may be priced at 2660% off. Some items may be priced at 2670% off. Some items may be priced at 2680% off. Some items may be priced at 2690% off. Some items may be priced at 2700% off. Some items may be priced at 2710% off. Some items may be priced at 2720% off. Some items may be priced at 2730% off. Some items may be priced at 2740% off. Some items may be priced at 2750% off. Some items may be priced at 2760% off. Some items may be priced at 2770% off. Some items may be priced at 2780% off. Some items may be priced at 2790% off. Some items may be priced at 2800% off. Some items may be priced at 2810% off. Some items may be priced at 2820% off. Some items may be priced at 2830% off. Some items may be priced at 2840% off. Some items may be priced at 2850% off. Some items may be priced at 2860% off. Some items may be priced at 2870% off. Some items may be priced at 2880% off. Some items may be priced at 2890% off. Some items may be priced at 2900% off. Some items may be priced at 2910% off. Some items may be priced at 2920% off. Some items may be priced at 2930% off. Some items may be priced at 2940% off. Some items may be priced at 2950% off. Some items may be priced at 2960% off. Some items may be priced at 2970% off. Some items may be priced at 2980% off. Some items may be priced at 2990% off. Some items may be priced at 3000% off. Some items may be priced at 3010% off. Some items may be priced at 3020% off. Some items may be priced at 3030% off. Some items may be priced at 3040% off. Some items may be priced at 3050% off. Some items may be priced at 3060% off. Some items may be priced at 3070% off. Some items may be priced at 3080% off. Some items may be priced at 3090% off. Some items may be priced at 3100% off. Some items may be priced at 3110% off. Some items may be priced at 3120% off. Some items may be priced at 3130% off. Some items may be priced at 3140% off. Some items may be priced at 3150% off. Some items may be priced at 3160% off. Some items may be priced at 3170% off. Some items may be priced at 3180% off. Some items may be priced at 3190% off. Some items may be priced at 3200% off. Some items may be priced at 3210% off. Some items may be priced at 3220% off. Some items may be priced at 3230% off. Some items may be priced at 3240% off. Some items may be priced at 3250% off. Some items may be priced at 3260% off. Some items may be priced at 3270% off. Some items may be priced at 3280% off. Some items may be priced at 3290% off. Some items may be priced at 3300% off. Some items may be priced at 3310% off. Some items may be priced at 3320% off. Some items may be priced at 3330% off. Some items may be priced at 3340% off. Some items may be priced at 3350% off. Some items may be priced at 3360% off. Some items may be priced at 3370% off. Some items may be priced at 3380% off. Some items may be priced at 3390% off. Some items may be priced at 3400% off. Some items may be priced at 3410% off. Some items may be priced at 3420% off. Some items may be priced at 3430% off. Some items may be priced at 3440% off. Some items may be priced at 3450% off. Some items may be priced at 3460% off. Some items may be priced at 3470% off. Some items may be priced at 3480% off. Some items may be priced at 3490% off. Some items may be priced at 3500% off. Some items may be priced at 3510% off. Some items may be priced at 3520% off. Some items may be priced at 3530% off. Some items may be priced at 3540% off. Some items may be priced at 3550% off. Some items may be priced at 3560% off. Some items may be priced at 3570% off. Some items may be priced at 3580% off. Some items may be priced at 3590% off. Some items may be priced at 3600% off. Some items may be priced at 3610% off. Some items may be priced at 3620% off. Some items may be priced at 3630% off. Some items may be priced at 3640% off. Some items may be priced at 3650% off. Some items may be priced at 3660% off. Some items may be priced at 3670% off. Some items may be priced at 3680% off. Some items may be priced at 3690% off. Some items may be priced at 3700% off. Some items may be priced at 3710% off. Some items may be priced at 3720% off. Some items may be priced at 3730% off. Some items may be priced at 3740% off. Some items may be priced at 3750% off. Some items may be priced at 3760% off. Some items may be priced at 3770% off. Some items may be priced at 3780% off. Some items may be priced at 3790% off. Some items may be priced at 3800% off. Some items may be priced at 3810% off. Some items may be priced at 3820% off. Some items may be priced at 3830% off. Some items may be priced at 3840% off. Some items may be priced at 3850% off. Some items may be priced at 3860% off. Some items may be priced at 3870% off. Some items may be priced at 3880% off. Some items may be priced at 3890% off. Some items may be priced at 3900% off. Some items may be priced at 3910% off. Some items may be priced at 3920% off. Some items may be priced at 3930% off. Some items may be priced at 3940% off. Some items may be priced at 3950% off. Some items may be priced at 3960% off. Some items may be priced at 3970% off. Some items may be priced at 3980% off. Some items may be priced at 3990% off. Some items may be priced at 4000% off. Some items may be priced at 4010% off. Some items may be priced at 4020% off. Some items may be priced at 4030% off. Some items may be priced at 4040% off. Some items may be priced at 4050% off. Some items may be priced at 4060% off. Some items may be priced at 4070% off. Some items may be priced at 4080% off. Some items may be priced at 4090% off. Some items may be priced at 4100% off. Some items may be priced at 4110% off. Some items may be priced at 4120% off. Some items may be priced at 4130% off. Some items may be priced at 4140% off. Some items may be priced at 4150% off. Some items may be priced at 4160% off. Some items may be priced at 4170% off. Some items may be priced at 4180% off. Some items may be priced at 4190% off. Some items may be priced at 4200% off. Some items may be priced at 4210% off. Some items may be priced at 4220% off. Some items may be priced at 4230% off. Some items may be priced at 4240% off. Some items may be priced at 4250% off. Some items may be priced at 4260% off. Some items may be priced at 4270% off. Some items may be priced at 4280% off. Some items may be priced at 4290% off. Some items may be priced at 4300% off. Some items may be priced at 4310% off. Some items may be priced at 4320% off. Some items may be priced at 4330% off. Some items may be priced at 4340% off. Some items may be priced at 4350% off. Some items may be priced at 4360% off. Some items may be priced at 4370% off. Some items may be priced at 4380% off. Some items may be priced at 4390% off. Some items may be priced at 4400% off. Some items may be priced at 4410% off. Some items may be priced at 4420% off. Some items may be priced at 4430% off. Some items may be priced at 4440% off. Some items may be priced at 4450% off. Some items may be priced at 4460% off. Some items may be priced at 4470% off. Some items may be priced at 4480% off. Some items may be priced at 4490% off. Some items may be priced at 4500% off. Some items may be priced at 4510% off. Some items may be priced at 4520% off. Some items may be priced at 4530% off. Some items may be priced at 4540% off. Some items may be priced at 4550% off. Some items may be priced at 4560% off. Some items may be priced at 4570% off. Some items may be priced at 4580% off. Some items may be priced at 4590% off. Some items may be priced at 4600% off. Some items may be priced at 4610% off. Some items may be priced at 4620% off. Some items may be priced at 4630% off. Some items may be priced at 4640% off. Some items may be priced at 4650% off. Some items may be priced at 4660% off. Some items may be priced at 4670% off. Some items may be priced at 4680% off. Some items may be priced at 4690% off. Some items may be priced at 4700% off. Some items may be priced at 4710% off. Some items may be priced at 4720% off. Some items may be priced at 4730% off. Some items may be priced at 4740% off. Some items may be priced at 4750% off. Some items may be priced at 4760% off. Some items may be priced at 4770% off. Some items may be priced at 4780% off. Some items may be priced at 4790% off. Some items may be priced at 4800% off. Some items may be priced at 4810% off. Some items may be priced at 4820% off. Some items may be priced at 4830% off. Some items may be priced at 4840% off. Some items may be priced at 4850% off. Some items may be priced at 4860% off. Some items may be priced at 4870% off. Some items may be priced at 4880% off. Some items may be priced at 4890% off. Some items may be priced at 4900% off. Some items may be priced at 4910% off. Some items may be priced at 4920% off. Some items may be priced at 4930% off. Some items may be priced at 4940% off. Some items may be priced at 4950% off. Some items may be priced at 4960% off. Some items may be priced at 4970% off. Some items may be priced at 4980% off. Some items may be priced at 4990% off. Some items may be priced at 5000% off. Some items may be priced at 5010% off. Some items may be priced at 5020% off. Some items may be priced at 5030% off. Some items may be priced at 5040% off. Some items may be priced at 5050% off. Some items may be priced at 5060% off. Some items may be priced at 5070% off. Some items may be priced at 5080% off. Some items may be priced at 5090% off. Some items may be priced at 5100% off. Some items may be priced at 5110% off. Some items may be priced at 5120% off. Some items may be priced at 5130% off. Some items may be priced at 5140% off. Some items may be priced at 5150% off. Some items may be priced at 5160% off. Some items may be priced at 5170% off. Some items may be priced at 5180% off. Some items may be priced at 5190% off. Some items may be priced at 5200% off. Some items may be priced at 5210% off. Some items may be priced at 5220% off. Some items may be priced at 5230% off. Some items may be priced at 5240% off. Some items may be priced at 5250% off. Some items may be priced at 5260% off. Some items may be priced at 5270% off. Some items may be priced at 5280% off. Some items may be priced at 5290% off. Some items may be priced at 5300% off. Some items may be priced at 5310% off. Some items may be priced at 5320% off. Some items may be priced at 5330% off. Some items may be priced at 5340% off. Some items may be priced at 5350% off. Some items may be priced at 5360% off. Some items may be priced at 5370% off. Some items may be priced at 5380% off. Some items may be priced at

Fresh Northwest Dungeness Crab is here!



First of the Season

Your wait is over!

Call your family and friends, melt the butter, put out extra napkins, select the wine, pull up the chairs and get ready to enjoy the main reason we put up with Northwest winter weather. *C'mon, what are you waiting for?*

Fresh Northwest Whole Cooked Dungeness Crab

2.99

Lb.

While supplies last. Fresh crab availability subject to catch and weather conditions.

Remember to bring home all the tools you need for a great feed!



OXO Good Grips Seafood Picks and Seafood Cracker Available in Housewares.

SAVE time with Fresh Express

Fresh Express Triple Hearts

2 for \$3

This tasty trio of romaine, green leaf and butter lettuce is ready for your fresh crab salad. Just add your favorite fresh veggies, hard boiled eggs and dressing for a light, healthy and satisfying meal.

8 oz.



Enjoy good low prices on all the fixings



La Crema Chardonnay, Erath Pinot Noir or Cambria Chardonnay

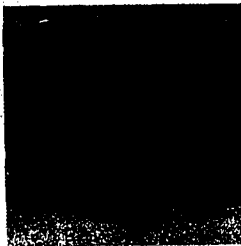
14.99 Ea.
750 ml.



Baguette

2 for \$3

Crusty on the outside, soft on the inside. Baked fresh. White or Multigrain.

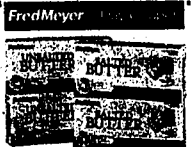


Private Selection Seafood Sauce

1.79

 Ea.

Add tangy flavor in a snap. 9.5 oz.



Fred Meyer Butter

3 for \$5


Your First 3 • With This Coupon Additional 1¢ Everyday! Low Price 1 lb. Salted or Unsalted.

Customer: Limit one coupon per purchase. Valid Prices, December 5 through Sunday, December 7, 2008. Cash value 1/100th of 1¢.



online
You'll find our Sunday ad online.
Go to fredmeyer.com

Fred Meyer

What's on your list today? 

Prices good Friday, December 5 through Sunday, December 7, 2008. Most stores open 7AM to 11PM.

BUSINESS

TIMES-NEWS • BUSINESS EDITOR JOSHUA PALMER: (208) 735-3231 JPALMER@MAGICVALLEY.COM

INSIDE: Flier High School senior continues school's annual book fair, B3



B

FRIDAY

DECEMBER 5, 2008

INSIDE: Stocks and commodities, B2 | Community, B3-4 | Obituaries, B5 | Weather, B6

Retailers nationwide see sales drop in dreary November

Weakest monthly sales report since 1969

By Anne D'Amico
Associated Press writer

NEW YORK — Retailers — with Wal-Mart the notable exception — limped through a miserable November that even a surge of shopping after Thanksgiving couldn't save, marking the weakest month since at least 1969 and deepening fears that the critical holiday period could be the most dismal in decades. As merchants announced their November sales figures Thursday, the deep malaise

cut across all sectors as shoppers worried about layoffs and shrinking retirement funds focus on necessities. Wal-Mart Stores Inc., though, posted sales gains that surpassed Wall Street estimates and has seen more customers and higher average transactions as it benefits from what could be a deep and prolonged recession.

However, Costco Wholesale Corp., usually a strong performer, reported a bigger-than-expected sales decline. And most mall-based chains

and department stores such as teen stalwart Abercrombie & Fitch Co., Kohl's Corp. and Macy's Inc. fared much worse, reporting percentage declines of over 10 percent.

"It's an awful beginning to the holiday season," said Michael P. Niemira, chief economist at International Council of Shopping Centers. "This is going to be a difficult holiday season for most retailers. There are going to be more bankruptcies." He predicted that the retrenchment in spending will linger for at least another six months.

According to the Goldman

Sachs-International Council of Shopping Centers index of 37 stores, sales dropped 2.7 percent for November, making it the worst month since at least 1969 when the index began. November's results were even more miserable than the 1 percent drop that had been anticipated. He noted that excluding Wal-Mart, the index declined a dramatic 7.7 percent, indicating a widening gap between the world's largest retailer and the rest of the merchants.

The tally is based on same-store sales, or sales at stores opened at least a year, which

are considered a key indicator of a retailer's health.

Based on November's performance, Niemira is slashing his holiday sales forecast for the combined November and December periods to be down as much as 1 percent. The only holiday period that was almost as weak was 2002, which posted a meager 0.5 percent same-store sales gain.

Sales data from the Thanksgiving weekend showed a buying binge on Black Friday — so named because it historically was the day that a surge of shoppers pushed stores into profitability.

Retail sales

The nation's retailers are reporting that November was the weakest month for sales since at least 1969.

*Percent change in major retailers' sales compared with November 2007.

November 2008

Wal-Mart Stores Inc.	+3.2%
Gap Inc.	-10.2%
Target Corp.	-10.4%
J.C. Penney Co.	-11.9%
Macy's Inc.	-13.3%
Abercrombie & Fitch	-28.0%

NOTE: Sales include those from stores opened for at least one year. Reporting periods vary slightly.

MORE THAN HORSESHOES

Idaho sends letters to unemployed

State telling growing number of jobless about extension

Times-News

Letters are being sent to thousands of Idaho workers notifying them they could be eligible for additional federal unemployment insurance benefits.

Last month President Bush signed legislation giving workers who have lost both their federal state unemployment benefits and their initial allocation of federal extended benefits up to seven additional weeks of benefits if they still have not found full-time jobs.

The Idaho Department of Labor is advising 3,700 workers that if they have already exhausted that initial federal benefit, they should call to reopen their claim and begin collecting additional benefits.

If they are still unemployed or working less than full time, claimants who received an extended benefit check for last week will simply continue filing, and benefits under the new extension will continue.

Workers eligible for federal extended benefits receive 80 percent of their regular state benefit up to 20 additional weeks or 20 times their original benefit amount, whichever is less.

Over 40,000 Idahoans were without jobs in October, twice the number of unemployed a year earlier, and unemployment benefits are being paid out at a record rate of over \$5 million a week.

Workers who lose their jobs through no fault of their own receive up to 26 weeks of unemployment benefits. The amount and length of payment is determined by the wages they earned the previous 15 months. The

Please see LETTERS, Page B2

Rio Hondo farrier supply moves into downtown Buhl

By Blair Koch
Times-News correspondent

BUHL — For more than six years Rio Hondo had been a thriving farrier supply retailer on the outskirts of town — now the store's owners hope sales will do better at its new location within the city limits.

Owned by Buhl resident Richard Brook, the quiet shop was located at 1964½ Highway 30, northwest of Buhl, with an original intent to offer a complete line of horseshoeing supplies.

Over time the business outgrew its humble beginnings despite being conveniently located on Brook's ranch, said Megan Slatam, who has worked at Rio Hondo for two years. Slatam said she doesn't think having to help work cattle while trying to juggle the store.

"This is nice. The store is bigger and we have room for more merchandise and we are going to get more traffic here. We've already had a few people stop in just to see what we are all about," she said. "We have the biggest selection of horseshoes in the area and now we have the

Please see B2, Page B2



Blair Koch/For the Times-News

Store Manager Kevin Deacon, prepares an outdoor barn display of the Rio Hondo, in addition to a large inventory of tack, farrier supplies and selection of western wear. Rio Hondo is now able to offer more livestock handling equipment and a variety of horse and buildings at their new location on Broadway Avenue in Buhl.

Small businesses should cut benefits temporarily to stave off layoffs

Many small businesses trying to weather the recession are cutting employee benefits along with other expenses, reducing or even eliminating their contributions to health care insurance and retirement plans.

These are painful moves that many companies undertake to save their cash flow and, in some cases, employ-

SMALL TALK
Joyce M. Rosenberg

ees' jobs. Human resources consultants say owners should aim at making these cutbacks temporary — and to let employees know that their benefits will be restored as soon as possible.

"No one likes this — it's a

bitter pill for everyone to swallow including my partner and me," said Margie Fox, co-founder of Maloney & Fox, a marketing communications firm based in New York. "We went from contributing 80 percent of health care to 50 percent."

Fox said the cuts, expected to be temporary, were necessary to avoid laying off a staffer. "No one wants to

make this decision to lay somebody off, and nobody deserves for that to happen," she said.

Rob Wilson, president of Employica, a Chicago-based resources outsourcing company, said he's hearing from many clients who need advice about cutting benefits. Some are asking about reducing the amount of money they contribute to

workers' 401(k) accounts, and wondering if they can make their plans non-matching, which allows employees to keep saving while a company suspends its contribution. Others are looking for ways to provide health coverage, but at a lower cost; many are switching to plans with higher deductibles.

Wilson said there are steps employers can take, at little

or no expense, that will make it easier for employees to take on the cost of health care costs. If a business decides to buy insurance with a higher deductible, it can also set up flexible spending accounts or health reimbursement accounts to still help workers save some money even as

Please see TALK, Page B2

STOCKS OF LOCAL INTEREST

Con Agra	13.80	▼ .19	Dell Inc.	10.27	▼ .28	Idacorp	28.43	▼ 1.12
Lithia Mo.	2.72	▲ .12	Micron	1.81	▼ .18	Supervalu	10.99	▼ .14

COMMODITIES

For more see page B2

Live cattle	83.07	▼ .75	Jan. oil	43.67	▼ 3.12
Dec. gold	763.8	▼ 5.00	Dec. silver	9.491	▼ .073

MARKET SUMMARY

Table with columns for NYSE, AMEX, NASDAQ, MOST ACTIVE, GAINERS, and LOSERS. Includes stock symbols, prices, and volume.

Table with columns for INDEXES and STOCKS OF LOCAL INTEREST. Includes Dow Jones Industrials, S&P 500, and local stock prices.

HOW TO READ THE MARKET REPORT
Main: Check the listed stock symbol by the company's full name (not the abbreviation). Company names made up of initials appear at the beginning of the report.

Auction Calendar
Through December 20th
SATURDAY, DEC. 6, 10:00am
Public Auto Auction, Twin Falls
Cars • Trailers • Boats • RVs

BUSINESS BRIEF
New jobless claims drop unexpectedly
WASHINGTON — New claims for jobless benefits fell unexpectedly last week but the number of people continuing to receive government aid reached a 26-year high and large companies announced more job cuts Thursday.

Rio
Continued from page B1
room to better display them."
Bringing the business into town has been something Rio Hondo and the Buhl Chamber of Commerce have been working on for the last couple of years.

The Labor Department reported that initial claims for unemployment insurance dropped to a seasonally adjusted 509,000, from an upwardly revised figure of 530,000 for the previous week. That was significantly below analysts' estimates of 520,000, according to a survey by Thomson Reuters. Despite the improved fig-

ure, large companies continued to lay off workers. AT&T Inc. said Thursday it is cutting 12,000 jobs, or about 4 percent of its work force, because of the economic downturn. The Dallas-based telecommunications company said it will take place this month and throughout 2009. — wire report

COMMODITIES REPORT

Table with columns for CHEESE, POTATOES, and LIVESTOCK. Lists various commodity prices and market movements.

BEANS

Yellow Beans: Prices for wheat per bushel, maize, corn, and soybeans are listed. Market reports indicate price fluctuations for various grades and origins.

GRAINS

Wheat: Prices for wheat per bushel, maize, corn, and soybeans are listed. Market reports indicate price fluctuations for various grades and origins.

METALS/MONEY

Gold: Prices for gold, silver, and platinum are listed. Market reports indicate price fluctuations for various grades and origins.

Letters

Continued from page B1
average benefit in Idaho has been around \$270 per week this year. The maximum weekly amount is \$361.

Talk

Continued from page B1
he's paying out more. HR professionals say employers need to keep in mind that while benefit cuts may be necessary, they are likely to add to the pressure on many already cash-strapped employers.

TURKEY SHOOT?

TURKEY SHOOT?
DATE: 12/06/08 TIME: 10:00
Twin Falls County Sheriff's Children's Bureau
TCFCSA Easter Egg Hunt for Developmentally Delayed Children.

Full Service OIL CHANGE

Full Service OIL CHANGE
Up to 5 Quarts Only \$25.99
TJK AUTO SERVICE
Learning QuickBooks Step-by-Step
"QuickBooks Fundamentals"

Learning QuickBooks Step-by-Step
"QuickBooks Fundamentals"
Just Some of What You Will Learn:
• Introducing QuickBooks
• Managing Revenues
• Managing Expenses
• Bank Reconciliation
• Reports & Graphs
• Company File Setup and Maintenance
• Customizing QuickBooks

Covering the communities of
Buhl, Castleford, Filer, Hansen,
Hollister, Kimberly, Murtaugh,
Rogerson, Twin Falls.

Bound for SUCCESS

By Blair Koch
Times-News correspondent

The Filer High School library has holes on its shelves. Books gone missing in action.

Librarian Debra Richards said that since the library electronically catalogued its collection of 7,500 books four years ago, students have managed to lose about 400 of them.

With about 200 books checked out each month, the number of books lost is a small, but important percentage of the library's offerings.

While the library won't replace all of the volumes, Richards has a wish list compiled by students and school English teachers of high-priority titles to get back into circulation.

Filer senior Kati Peters, 18, hopes her senior project helped generate funds to get the wanted books. On Tuesday, Peters hosted a book fair at the Barnes & Noble book store in Twin Falls.

A percentage of the day's sales, depending on how many customers made purchases on behalf of the school — by presenting vouchers or verbally telling store associates at the cash

register — will be given to the school for new library books.

"I don't have a goal amount of money to be raised but last year's book fair had \$5,000 in sales and so I hope we do at least that good," Peters said.

She assisted with the sale last year and played many roles in it this year. As a member of the school's madrigal ensemble and jazz band, Peters performed for book fair goers in addition to organizing the event.

"It was a lot harder than I thought it was going to be," Peters said. "There was advertising, marketing, and a lot of work in letting the community know that this was going on."

Filer High does a good job in

generating community support, said Barnes and Noble Manager Scott Taylor.

It's a win-win situation for the store and the school, he said. Sales proceeds cap at a 25 percent return to the school but the store sees a spike in sales during book fairs, meaning it makes more money, too.

"We let any school that wants to have book fairs come in and do one," Taylor said. "Filer has had a fair for four or five years now and they're really good at getting people coming in all day."

Back in the library, Richards can't wait to see how many new books will come in. She wants to increase the library's classic book selection and beef up the

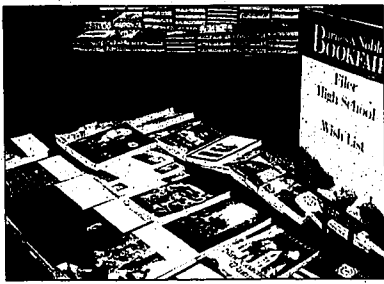
fiction section.

"I want a whole new set of classics. The hard backs I want are beautifully bound and have really wonderful pictures on the front. While there is some chann on an old book, ours are just worn out," Richards said. "I think by having an attractive set, students will be more drawn to reading them."

The wish list includes the book Peters plans on reading next, Alexandre Dumas' "The Count of Monte Cristo."

"I use the library quite a bit and hope this helps, even if it's just a little," said Peters.

Blair Koch may be reached at 208-316-2607 or blairkoch@gmail.com.



A sampling of books on the Filer High School library wish list was displayed at a book fair held Tuesday at the Twin Falls Barnes & Noble book store. The fair was organized by Kati Peters, who used the fair to fulfill her senior project.



Peters



Tuesday's book fair at the Barnes & Noble book store in Twin Falls included musical performances by the Filer High School Madrigals, shown here, and the school's jazz band. The fair, organized as Kati Peters' senior project, helped raise funds for the purchase of new books for the FHS library.

HEROES AT WORK

Senior instructor Brian Higgins of Success Martial Arts in Twin Falls recently created the Action Heroes Program as a tool to empower students to become heroes through their own actions. The day after Thanksgiving, the Success Martial Arts students volunteered their time and helped the Salvation Army pack up from the Thanksgiving festivities and prepare for Christmas. They also prepared and served meals. Pictured from left, the Maher family, the Diskan girls, the Harlock family, Steacy Padua, the Quintara family, the Ward family, the Rick family, the Schmitt ladies, Braca Somrak, James Teetschka, Curt Hart, and the Lockwood family. For more information on the Action Hero's program: 733-8910. Courtesy photo



COMMUNITY NEWS

Archaeology meeting tonight

The Snake River Chapter of the Idaho Archaeological Society will meet at 6:30 p.m. today at Idaho Joe's, 588 Blue Lakes Blvd., Twin Falls, for a no-host planning supper. Anyone interested in archaeology and history is encouraged to attend. Information: Judy Robinson, 733-7495.

Hansen tree lighting tomorrow

The Hansen Community Christmas Tree Lighting will be held Saturday in Dixon Park located on U.S. Highway 16 in Hansen. The event will begin at 5 p.m. with the MID Action Committee serving free chili, coffee and hot chocolate. Lights will be turned on at 6 p.m. Information: 423-5881 or 423-5158.

Magic Valley Model Railroad Group holds open house

The Magic Valley Model Railroad Group is holding its 20th Annual Christmas Open House from noon to 5 p.m. Saturday at the Twin Falls County Fairgrounds in Filer. Admission is free. Information: Gary Wlodarczyk, 735-4184.

Christmas memorial service nears

Park's Magic Valley Funeral Home will be hosting its 11th Annual Christmas Memorial Service at 4 p.m. on Dec. 14 at 2501 K. Street in Rexburg. The event will feature the lighting of the memorial Christmas tree. Information: 735-0011.

Buhl library holds Christmas program

Buhl Public Library will hold its family Christmas program from 6 to 8 p.m. Dec. 11 at the library, 215 Broadway Ave. N., Buhl. The event will feature stories, prizes, skits, crafts, guest readers, and an appearance by the Jones family. The public is invited. Refreshments will be served. Information: 743-6500.

Area chess players place at Idaho Open tournament

The Idaho Chess Association announced that Garrett Reynolds of Boise was the winner of the 2008 edition of the Southern Idaho Open Chess Tournament held recently in Twin Falls.

Reynolds breezed through the small field to finish at 3.5/4, surrendering only a draw in the final round on board one to Dan Looney of Meridian, who was the only other undefeated player in the event. Looney matched a 2.5/4 score to tie for second place with Boise's Kurt Douglas and Fred Bartell of Twin Falls. Douglas' and Bartell's only defeat came at the hands of the tournament champion, Aleksandr Vereshchagin of Twin Falls and Adam Porth of Bellevue each finished at 2/0/4 to share the prize. Both players achieved their result even though the section had to be included with the tougher Open Section.

The tournament welcomed first time player Andy Smart of Boise as well as 10-time Idaho State Champion, Glenn Buckendorf of Buhl.

The Idaho Chess Association would like to thank Chainlink Insurance in Twin Falls, which has sponsored the site for chess events in the Magic Valley since 1991.

Davidson of Buhl wins wool award

Lacey Barker of Nampa won the state award for the advanced sewing category in this year's 2008 Idaho 4-H Wool Contest and Abby Platt of Caldwell took first in the state basic sewing category.

The contest is offered through a partnership of more than 50 years between the Idaho Wool Growers Association and University of Idaho Extension's statewide 4-H program. This year 36,069 Idaho youths and nearly 4,000 volunteers participated in 4-H, the nation's best known youth leadership development program.

Rena Davidson of Buhl, District III, was the advanced category winner for her wool suit. She won \$100. The 2008 contest was held in October at the annual Sheep Festival in Idaho. Winners were announced at the Idaho 4-H Leaders Forum in Salmon on Oct. 26. Participants received wool fabric from Carleen Clayville of Carleen Fabrics and Crafts in Rupert. — Times-News

BUHL MIDDLE SCHOOL HONOR ROLL

Buhl Middle School announced its first quarter honor roll.

**4.0
EIGHTH GRADE**
Stevie Highberger, Oiana Lara, Kikylea Lively, Taylor Oppecky, Tyce Pearson, Kyra Perron, Isalah Sonner, Ares Sulzer, Max West.

SEVENTH GRADE
Emily Hamilton, Amy Morse, Bree Pettinger, Cassidy Ring.

SIXTH GRADE
Kennedy Bowman, Lindsey Clements, Cooper Felton, Haley Gorrell, Katie Klimes.

**3.5 to 3.99
EIGHTH GRADE**
Becca Bailey, Alexis Bybee, Cassandra Christopherson, Cathrina Conington, Casey Gabarril, Bethany Hedges, Karlie James, Antonette

Lauda, Jasmine Lizarraga, Ruth Loza, Kenneth Marshall, Marissa Mitchell, Maria Montgomery, Paola Padilla, Michael Peckham, Ashley Pierce, Boen Puente, Carah Quigley, Monica Sander, Garrett Shirver, Miranda Slater, Maggie Trujillo.

SEVENTH GRADE
Leticia Arredondo, Britney Barger, Dylan Burum, Wade Crossland, Kaitlynn Fleming, Kade Ford, Ismeria Gallegos, Kellen Gillis, Kenny Gutierrez, Joel Hamilton, Hunter Hulce, Wynne Jacobson, Adam McLain, Benjamin Meiers, Janet Murillo, Angie Tonge.

SIXTH GRADE
Matthew Azevedo, Brianna Barker, Garrett Burnum, Christina Butler, Grant Dixon, Sedie Jones, Jon Jucker, Peter Matt, Natalie Morse, Addie Owen, Lea Peterson, Autumn

Robbins, Gago Silva, Cotten Wonenberg.

**3.0 to 3.49
EIGHTH GRADE**
Patrick Arroyo, Mauricio Ayala, Gwendolyn Bohm, Jose Carrillo, Tyler Cole, Abraham Cortes, Jacob DeLoof, Zane Rayley, Haroldo Garcia, Sraedon Gerdes, Jasmine Gifford, Andrew Jensen, Jacob Klimes, Bryce Kone, Dalton Luery, Michael Larkin-Melton, Kelsey Leonard, Kendi Littlefield, Kyle Lovelless, Jose Maria, Kayley Montgomery, Brandon Moore, Rieva O'Brien, Andrew Olson, Daniel Peralta, Karen Peralta, Juan Perez, Devon Phrout, Gilberto Rizo, Randy Rutherford, Traeger Rutherford, Eric Rutherford, Jennifer Skinner, Slayark Stroberg, Edgar Velasquez, Madison Walker, Reba Wolford, Kelsey Wray.

SEVENTH GRADE
Sean Belveal, Jonah Borup, Marissa Brodine, Samantha Burbanck, Scotty Cannell, Jerry Chavez, Candice Christensen, Connor Collins, Ian Compton, Kristin Griffiths, Steven Heilicson, Johnny Hernandez, Tanya Higley, Morgan Hunt, Gray Jones, Aaron Lively, Andrea Maye, Andrea Maye, Alvaro Peralta, Cepheus Stroberg.

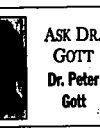
SIXTH GRADE
Raquel Artzmeidl, Meghan Bohling, Kahlm Bidwell, Luis Carmona, Pilar Cervantes, Matthew DeKruif, Derek Eaton, William Ellis, Daniel French, Alejandra Gonzales, Jesse Helton, Blanca Hernandez, Bryton Houser, Bryden Israel, Tyson Larson, Dean Lenley, Ryan Lovless, Omar Mares, Arny Mink, Brian Phillips, Brandon Smalley.

Apple juice helps irritated bowel

DEAR DR. GOTT: I realize that one size does not fit all, but why not try the simplest first? A year ago, I was having lots of trouble with Irritable Bowel Syndrome and got no help from local doctors. Perhaps that was because it was going to take months to get an appointment with a specialist. One of your articles men-

tioned drinking a glass of warm apple juice in the morning. It has worked great for me. **DEAR READER:** Irritable Bowel Syndrome (IBS) is a common disorder of the intestines. Symptoms include lower abdominal pain, gas, bloating, constipation, diarrhea, or a combination of constipation and diarrhea.

Improper diet and stress can worsen symptoms. While the condition can be a mild annoyance for some people, it can be completely disabling for others. Criteria for diagnosis of IBS include at least 12 weeks of abdominal pain or discomfort (not necessarily consecutive weeks) and at least two of three other symptoms — change in stool



**ASK DR. GOTT
Dr. Peter Gott**

be helpful for those suffering from constipation. Learn which foods to avoid, such as alcohol, chocolate, caffeine and deep-fried fatty foods, which can trigger symptoms. Eat smaller meals, since overeating can cause cramps and diarrhea. Take the necessary steps to reduce stress levels. Perhaps this will be through exercise, counseling or by listening to music. If one of your major symptoms is constipation,

the warm apple juice you mentioned might be just the ticket. I am pleased you found such a simple solution to the complex condition. Thank you for sharing your success story.

Peter Gott is a retired physician and the author of the book "Dr. Gott's No Flour, No Sugar Diet," available most everywhere at independent bookstores, and the recently published "Dr. Gott's No Flour, No Sugar Cookbook."

SOMEBODY NEEDS YOU

Drivers — Twin Falls Senior Citizens Center is in need of volunteer drivers for the "home delivered meals" program for the homebound. Drivers do not have to be seniors (husbands and/or wives or anyone of legal driving age) to volunteer to drive one or two days a week for an hour to an hour and a half. The center needs people who can be relied on for their appointed routes. Reimbursed mileage for gas is available. Information: Karen, 734-6084.

Drivers — Retired and Senior Volunteer Program is in need of volunteer drivers, age 55 and older, in Shoshone, Jerome and Filer. Volunteers are reimbursed mileage and are covered by excess insurance. Information:

Want to help?

This public service column is designed to match needs in the Magic Valley with volunteer help. If you need a volunteer, contact the Retired and Senior Volunteer Program (RSVP) at 736-4784, before noon Wednesday for Friday publication. RSVP is a United Way-sponsored agency at the College of Southern Idaho.

Edith, 736-4784. **Drivers** — Retired and Senior Volunteer Program is in need of volunteer drivers, age 55 and older, in the Mini-Cassia area to take senior citizens to doctor appointments and for

grocery shopping. Volunteers are reimbursed mileage and are covered by excess insurance. Information: Kitty, 677-4872, ext. 2. **Volunteers** — Long Term Care Ombudsman Program is in need of volunteers to visit residents in skilled nursing and residential care facilities. Volunteers can be advocates for residents and improve elderly care. Training and mentoring will be provided. Information: Mary or Laurene at Office of Aging, 736-2122. **Volunteers** — Hospice Visions is seeking volunteers for its hospice home, Visions of Home. Volunteers are needed to assist patients with letter writing, reading, visiting, playing cards or being a friend dur-

ing a difficult time in their lives. Call Flo at 735-0121. **Donations/Volunteers** — The College of Southern Idaho Refugee Center is in need of bicycles in good repair for transportation to work and all household items including televisions, computers, phone sets, irons and ironing boards; and warm clothes, gloves and hats. Donated items can be taken to the office at 1526 Highland Ave. E. 8 a.m. to 4:30 p.m. (closed noon to 1 p.m.) Monday through Friday. The center also is in need of volunteers to work with refugees in a variety of areas. Information: Michelle at 736-2166. **Donations** — New Hope Transition Center is in need of several items to help through

the winter, including noodles, canned vegetables, stews and soups, fresh vegetables, large garbage bags, paper towels, toilet paper, liquid dish soap, laundry soap and cleaning supplies. Donated items can be taken to the center at 425 Second Ave. N. in Twin Falls. **Foster parents** — Magic Valley Youth and Adult Services is in need of foster parents for local foster children who need temporary homes. Many children in south-central Idaho are in foster care due to neglect, abuse or abandonment. More children who are 10 and younger are in foster care, but less foster homes are available for those 11 and older. Information: 734-4435 or Idaho Care Line at 211.

Mentors — The Retired and Senior Volunteer Program is in need of volunteers, age 55 and older, in Jerome and Twin Falls counties to mentor children of prisoners. Volunteers must undergo a complete background check and be willing to mentor a child for a minimum of one hour each week for one year. Information: Ken, 736-2122, ext. 2394 or kwhting@coa-psl.edu. **Instructors** — American Red Cross of Greater Idaho is seeking volunteer instructors for community cardiopulmonary resuscitation and first-aid classes. Scholarships are available. Information: Jennifer at (800) 853-2570, ext. 302.

TWIN FALLS

Dine on Us

You could win our weekly drawing for a \$50 gift certificate to one of these fine restaurants. Just fill out the entry form below and mail it in for your chance to win.

FEATURED RESTAURANT

Celebrate the Season with Your Family and Friends!

Book Your Holiday Party with Us!

Company Parties • Business Meetings • Family Gatherings
(seating for up to 75 guests)



Open 7am Mon. - 11 2pm • Tues.-Thurs. - 11 9pm • Fri. & Sat. - 11 9:30pm • Sun. - 11 9pm

Frog's Landing
Hagerman, ID • 208-837-6277



ENTRY FORM

Restaurant _____

Name _____

Address _____

City _____ State _____ Zip _____

Phone _____

Mail to: Dine On Us, c/o Times-News, PO Box 548, Twin Falls, ID 83303, or drop off form at our office: 132 Fairfield Street West, Twin Falls.

Authentic Chinese Cuisine
Cantonese • Szechuan • Hunan
Daily Lunch Specials • Banquet Room
We'll prepare your wild game!
(Closed Mondays)

Peking Restaurant
624 Blue Lakes Boulevard North
Behind Wendy's
733-4813
Dine In or Take Out

For the Best
PIZZA & PASTA
in all the Magic Valley ~
Plus Sandwiches and Salad Bar

Knoxies Enjoy Our Party Room!
170 Blue Lakes Blvd.
Twin Falls, ID
733-3963

ROCK GREEK
STEAKS • BURGERS • FISH
FRESH SEAFOOD • COCKTAILS

Banquet Facilities
734-4154

The Classic
Idaho Dinner House...
Serving You Since 1978

Happy Hour
4:30 pm - 6:30 pm
Weekdays Only

All Drinks *1.00 Off
Appetizers 1/2 Price
Bar opens at 4:30 -
Dinner at 5:00

200 Addison Ave. W.
Twin Falls, ID
Our hours: 11:30 AM - 11:00 PM
DAILY 9pm - 11:00 PM
SUNDAY 4pm - 11:00 PM

Loong Hing Restaurant
International Buffet & Mongolian Barbecue

LUNCH • DINNER
BUFFET DAILY

Lunch & Dinner Buffet • 7:00AM TO 9:00PM

- * Senior Discount
- * Jumbo Crab
- * Wild Game
- * Mongolian BBQ
- * Legs Nightly
- * Dinner (Our Specialty)
- * Kids Menu
- * Seafood Served
- * BBQ Ribs
- * Full Salad Bar
- * Nightly

TAKE OUT OR FREE DELIVERY (WITH ORDER 15% OR MORE)

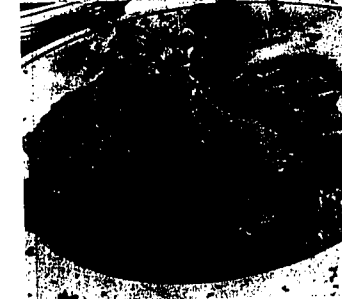
1719 KIMBERLY RD. • TWIN FALLS, ID 83301
733-3113 OR 736-2882
www.loonghing.com

Kids' Buffet
Only \$3.95

Pasta Roma Book holiday parties now!

611 Blue Lakes Blvd • Twin Falls
733-9728 • Open all day, 7 days a week
Must present ad when ordering to receive discount.
Expires 12/14/08.

Congratulations to Rayleen Hughes of Murtaugh winner of a \$50 gift certificate to Loong Hing.



Always #1 Customers' Choice

MANDARIN HOUSE CHINESE BUFFET

Chinese Buffet

FRESH SALAD BAR, GRAND BUFFET
AND COMPLETE MENU EVERY DAY!

MANDARIN HOUSE
735 Blue Lakes Blvd. N. • Twin Falls • 734-6578
TAKE OUT and DELIVERY
Open Daily 11 am - 9 pm, Friday & Saturday until 9:30

A Gift Certificate For You Purchase for any occasion or event.

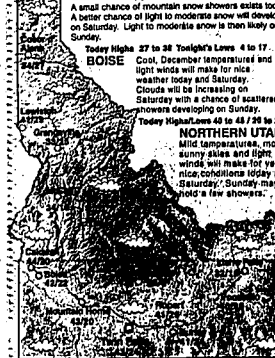
TWIN FALLS FORECAST

Today: Warmer than normal temperatures and partly to mostly cloudy skies. Highs lower 40s.

Tonight: Partly cloudy skies and brisk temperatures. Lows in the middle 20s.

BURLEY/RUPERT FORECAST
Today: Cool temperatures, light winds and partly cloudy skies. Highs lower 40s.

IDAHO'S FORECAST
SUN VALLEY, SURROUNDING MTS.
A small chance of mountain snow showers exists today.



TWIN FALLS FIVE-DAY FORECAST

Table with 5 columns: Today, Tonight, Saturday, Sunday, Monday. Includes weather icons and temperature ranges.

Yesterday's Weather

Table with 2 columns: City, Hi Lo. Lists weather for various cities like Boise, Burley, and Sun Valley.

ALMANAC - TWIN FALLS

Table with 2 columns: Yesterday, Today. Lists Temperature, Precipitation, Humidity, and Barometric Pressure.

Table with 2 columns: Yesterday, Today. Lists Sunrise and Sunset times for various cities.

MOON PHASES

Table with 2 columns: Day, Moon Phase. Shows phases like First, Full, Last, and New Moon.

MOONRISE AND MOONSET

Table with 2 columns: Today, Tomorrow. Lists Moonrise and Moonset times.

REGIONAL FORECAST

Table with 3 columns: City, Today, Tomorrow. Lists forecasts for Boise, Burley, and other regional cities.

NATIONAL FORECAST

Table with 3 columns: City, Today, Tomorrow. Lists forecasts for major US cities like Chicago, New York, and Los Angeles.

REGG MILDENKAUF'S QUOTE OF THE DAY
I have been thinking about you and the difficulties and delays...

CANADIAN FORECAST
Table with 3 columns: City, Today, Tomorrow. Lists forecasts for Canadian cities like Calgary and Vancouver.

WORLD FORECAST
Table with 3 columns: City, Today, Tomorrow. Lists forecasts for international cities like London, Paris, and Tokyo.

Massachusetts gun club, police chief indicted in boy's accidental shooting death

SPRINGFIELD, Mass. (AP) — Three men, including a small-town police chief, were indicted Thursday on involuntary manslaughter counts in the gun-fair death of an 8-year-old who accidentally shot himself in the head with an Uzi that a prosecutor said he never should have been allowed to handle.

District Attorney William Bennett said the child, Christopher Biliz, was supervised by an unlicensed 15-year-old boy. Christopher, of Ashford, Conn., lost control of the 9mm micro submachine gun as it recoiled while he was firing at a pumpkin Oct. 26 at the Machine Gun Shoot and Firearms Expo at the Westfield Sportsman's Club in western Massachusetts.

because he owns the sponsor of the gun fair, COP Firearms & Training. Two men who brought the automatic weapon to the show, Carl Gullifio of Hartford, Conn., and Domenico Spano, of New Milford, Conn., also were indicted.

An involuntary manslaughter conviction carries a maximum 20-year prison sentence and \$1,000 fine. The term could be five years or less for someone with no prior convictions.

Large advertisement for Downtown Kimberly & Hansen. Includes sections for Christmas Lights, Christmas Tree Lighting Ceremony, St. Nicholas Comes to Kimberly, and Home Heating & Air Conditioning. Features various promotional offers and contact information.

TIMES-NEWS • FEATURES EDITOR VIRGINIA HUTCHINS: (208) 735-3242 VIRGINIA.HUTCHINS@LEE.NET

Holiday central?

Wood River Valley's entertainment array might be worth a drive

By Karen Bossick
Times-News correspondent

Graham crackers will become the stuff of two-by-fours and M&Ms will serve as roofing shingles when the gingerbread decorating gets under way Saturday in Halley.

The gingerbread house building — part of Halley's Winter Wonderland — is one of a variety of holiday activities going on in the Wood River Valley this weekend, and families in the rest of south-central Idaho might find it's worth a drive.

"The kids wiped us out of red tins and marshmallow cream last year because they ate the building materials as they worked," said Jim Spinelli, director of the Halley Chamber of Commerce. "It's a great event — everybody's smiling and having a great time."

The holiday season in the Wood River Valley officially gets under way tonight, with Halley's Hometown Holidays Parade. Santa will parade down Main Street on a fire engine beginning at 6 p.m., before making his way to Roberta McKecherch Park across from the airport, where choirs will sing holiday favorites as the town Christmas tree is lighted.

Santa will then adjourn to the historic 1920s Ellsworth Inn at 702 Third Ave. S., where complimentary cocoa and cider will be served. And Vintage Gypsy, Body Buff, Tater Tots, Christopher's and other stores will stay open late for Christmas shoppers.

There's plenty more to keep families busy throughout the weekend.

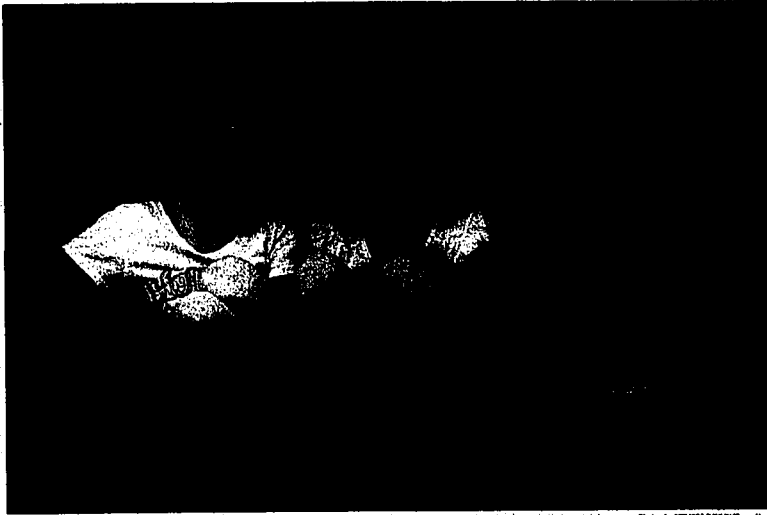
The Sun Valley Ballet School will present the perennial holiday retelling of "The Nutcracker" today through Sunday at the nextStage Theatre, 120 S. Main St. in Ketchum.

Professional dancer Todd Fox, who has danced with ballets in Ireland, South Africa, Uganda, Venezuela and other countries, will dance in the show. Joining him will be professional Broadway dancer Jermaine Rember, who was in the Tony Award-winning Broadway production of "La Cage Aux Folles."

Nina Hirner, who has danced with Sun

Please see HOLIDAY, Page C2

The littlest dancers



Photos by MELISSA DAVLIN/Times-News
In the Kabakoros' Twin Falls home, Ryan Crider, left, Selah Kabakoro and Tristin Cameron take a break from practicing their dances for their upcoming performances in the Eugene Ballet's Twin Falls production of "The Nutcracker."

For youngsters, 'Nutcracker' is new every year

By Melissa Davlin • Times-News writer



Hosanna Kabakoro remembers watching "The Nutcracker" during Christmases in Fiji, where she spent much of her childhood. And for the past three years, Hosanna has been able to watch her little sister, Selah, dance in the same production.

"We've switched over from watching it on a TV to watching a member of our family in it," Hosanna said.

Not just the Kabakoros. It's a tradition that many Magic Valley families treasure.

On Wednesday, 46 local children will perform in the Eugene Ballet's "The Nutcracker." For many of the girls, the annual production has become a tradition they look forward to all year.

For 20 years, the Eugene Ballet has toured the West, performing "The Nutcracker" more than 25 times in an average of five states every year.

This year marks Selah Kabakoro's third performance. Selah, 10, will play a party guest with her friend, Ryan Crider, 13. Another friend, Tristin Cameron, 8, plays an angel. The Twin Falls girls met at Mauldin's Dance Studio, which supplies many of the locals for the touring production.

Like many young dancers, Tristin started dancing in "The Nutcracker" as a mouse. Next year, she is aiming for a slot as a ladybug or a party guest.

"She's going to work her way up until she's Clara," said Angie Cameron, Tristin's mother. The performance isn't just a family tradition. It has also helped form strong bonds between the

dancers. Before performing in "The Nutcracker" these three girls didn't know each other. Now, they act like mischievous old friends. Between demonstrating their moves in the Kabakoros' living room on Sunday, the girls congregated on the couch and giggled while their mothers chatted. Soon, the girls were joined by a tiny kitten — a gift from Twin Falls dance instructor Samantha Graff.

"It's more like a family," Angie Cameron said. Despite living in the same town, dancers don't rehearse together.

Angels dance only with angels, and mice don't mingle with party guests. Graff teaches the groups their dances based on video of the performance supplied by the organizers.

On the day of the production, the Eugene Ballet Co. descends upon Twin Falls to rehearse with the local dancers before going on stage that night. The girls don't even see their costumes until that day.

"Still, the production comes together flawlessly every year, said Summer Kabakoro, Selah's mother. And although the kids get to work directly with the company for only a day, it's still a great chance to learn new techniques from the pros, the girls said.

"It's wonderful," Selah said. "Dance is only a hobby for most of the girls — of the three friends, only Ryan wants to work her way up to Eugene Ballet — but they and their families still treasure their time spent in ballet slippers during the holidays every year."

Melissa Davlin may be reached at 208-735-3234 or at melissa.davlin@lee.net.

What's The Nutcracker? performed by the Eugene Ballet Co. and local dancers
Where: College St. Southern Idaho Fine Arts Museum
When: 7:30 p.m., Wednesday
Ticket: \$19 for adults, \$13 for children; available at the CSI Fine Arts Box Office from 8:30 a.m. to 4:30 p.m. Monday through Friday, online at ticketcentral.edu, or at 732-6288

SEE THE MICE AND ANGELS

Coming Monday on Magicvalley.com

Watch for an upcoming video story about a young dancer who plays a party guest.

Cast list (from top left)			
Baby mouse: Helen Barnes	Todd Wilcox	Kelley McCurdy	Emily Roser
Party guests: Daniel Cavitt	Angela	Lays Powell	Emme Graff
Christmas Eve: Susan Glendon	Sydney	Madison Thomas	Selah Kabakoro
Mouse: Hannah Morgan	Tristin Cameron	Casey	Alicia Kezler
Angel: Hannah Morgan	Hanna Cameron	Casey, Miranda	Elise Roser
Mouse: Hannah Morgan	Hanna Cameron	Casey, Miranda	Marish Thorquest
Mouse: Hannah Morgan	Hanna Cameron	Casey, Miranda	Emily Wilkinson
Mouse: Hannah Morgan	Hanna Cameron	Casey, Miranda	Rachel Roser
Mouse: Hannah Morgan	Hanna Cameron	Casey, Miranda	Flowers
Mouse: Hannah Morgan	Hanna Cameron	Casey, Miranda	Elizabeth Brumby
Mouse: Hannah Morgan	Hanna Cameron	Casey, Miranda	Stephanie Brunelle
Mouse: Hannah Morgan	Hanna Cameron	Casey, Miranda	Casey Roser

Nina Hirner dances as the Sugar Plum Fairy in the Sun Valley Ballet School production of "The Nutcracker."

INSIDE: Events calendar, C5-7 | Karaoke corner, C8

Celtic carols

'Celtic Advent Carol' captures hearts of Oakley singers.

See page C4

BookChat

The perfect book for her

See page C2

BookChat

Gift books for her

Books are always the perfect gift — you never have to worry about the correct size or color; they are easy to wrap and mail; and this year, with the average cost around \$20, they are an exceptionally great holiday gift.

For the women on your list, beginning today with the women in your life. "The Guernsey Literary and Potato Peel Pie Society" by Mary Ann Shaffer and Annie Barrows (*The Dial Press*, \$22). One of my favorite novels of the year. Set on the Isle of Guernsey shortly after World War II, this charming gem of a story is written as a series of letters between the protagonist, Julie Ashton, and a number of its inhabitants. Learning from the book that the island was occupied by the Nazis during the war is written as a series of letters between the protagonist, Julie Ashton, and a number of its inhabitants. Learning from the book that the island was occupied by the Nazis during the war is written as a series of letters between the protagonist, Julie Ashton, and a number of its inhabitants.

"With breathtaking watercolors and pithy observations (a whole page devoted to mud), 'Wanderers' is a treasure to be read and re-read, to savor. You'll nod your head in wise agreement."

20 years as an assistant to the vice president of Christie's, Swift settles down in a small village on Long Island Sound and spends the next decade putting together a life of quietude and learning what it means to call a place "home." With breathtaking watercolors and pithy observations (a whole page devoted to mud), "Wanderers" is a treasure to be read and re-read, to savor. You'll nod your head in wise agreement.

"Fairy Houses and Beyond" by Barry and Tracy Kane (*Light-Bearers Publishing*, \$15.95). OK, I admit right up front that this title is on my own wish list. While close friends are downsizing houses and yards, I began a project last summer that will keep me busy for the next 20 years: English flower garden complete with cottage. So I was delighted to discover this newest title in the Kanes' Fairy House series. It is a how-to, plentiful tour of fairy houses, villages and neighborhoods all built with things from nature. The photographs are enchanting, and the idea of actually constructing a fairy house appeals to the child in all of us. Are you listening, Santa? Next time, gifts for him.

Judi Baxter owned and operated Judi's Bookstore in downtown Twin Falls from 1978 to 1992. From 2000 to 2004 she wrote a twice-weekly column for *Wendell Merchants*. Weekly's online edition called "Reviews in the News."

Do you love your Second Life?

If you regularly put on an avatar and deal in Linden dollars — or you know someone in south-central Idaho who does — we want to hear from you for a story on Second Life, an online virtual world.

Call or write to reporter Ariel Hansen at 208-788-3475 or ariel.hansen@lee.net, and include a phone number where you can be reached during the day.

Intestate Assessment, Motion Dec. 5 to 7, 2008

Nicole Kidman - Australia
Date: 12/5/08 10:30 AM

Quantum of Solace (on Day 10) 9:15
Sun: Sun 12:10 2:20 4:30 6:40 8:50
Tue: Sun 12:10 2:20 4:30 6:40 8:50
Wed: Sun 12:10 2:20 4:30 6:40 8:50
Thu: Sun 12:10 2:20 4:30 6:40 8:50
Fri: Sun 12:10 2:20 4:30 6:40 8:50
Sat: Sun 12:10 2:20 4:30 6:40 8:50

Second Lines of Blood (on Day 7) 10:45
Sun: Sun 12:10 2:20 4:30 6:40 8:50
Tue: Sun 12:10 2:20 4:30 6:40 8:50
Wed: Sun 12:10 2:20 4:30 6:40 8:50
Thu: Sun 12:10 2:20 4:30 6:40 8:50
Fri: Sun 12:10 2:20 4:30 6:40 8:50
Sat: Sun 12:10 2:20 4:30 6:40 8:50

Ray Stevenson Julie Benz
Now at the Twin Cinema

A Vest Carved of Romance
Drama, Adventure, and Spectacle

Nicole Kidman Hugh Jackman
AUSTRALIA
Now at the Orpheum

Not all Gift Certificates are Created Equal!
The special service deserves the best!

Intestate Assessment, Motion Dec. 5 to 7, 2008

Nicole Kidman - Australia
Date: 12/5/08 10:30 AM

Vengeance has a name.

Quantum of Solace (on Day 10) 9:15
Sun: Sun 12:10 2:20 4:30 6:40 8:50
Tue: Sun 12:10 2:20 4:30 6:40 8:50
Wed: Sun 12:10 2:20 4:30 6:40 8:50
Thu: Sun 12:10 2:20 4:30 6:40 8:50
Fri: Sun 12:10 2:20 4:30 6:40 8:50
Sat: Sun 12:10 2:20 4:30 6:40 8:50

Second Lines of Blood (on Day 7) 10:45
Sun: Sun 12:10 2:20 4:30 6:40 8:50
Tue: Sun 12:10 2:20 4:30 6:40 8:50
Wed: Sun 12:10 2:20 4:30 6:40 8:50
Thu: Sun 12:10 2:20 4:30 6:40 8:50
Fri: Sun 12:10 2:20 4:30 6:40 8:50
Sat: Sun 12:10 2:20 4:30 6:40 8:50

Ray Stevenson Julie Benz
Now at the Twin Cinema

A Vest Carved of Romance
Drama, Adventure, and Spectacle

Nicole Kidman Hugh Jackman
AUSTRALIA
Now at the Orpheum

Holiday

Continued from page C1
Valley Ballet School for 12 years, will appear as the Sugar Plum Fairy. Third graders Emerson McCune and Audrey Nelson will dance the part of Clara.

The role of Clara is one of the most coveted roles in ballet, according to the Sherry Horton. It is also a demanding role necessitating that the girls memorize 20 minutes of dancing and perfect such moves as a tour jeté, a jump in which they switch legs in mid-air and land on one foot, and the pas de chat, or "the step of the cat," in which they dance from one foot to another landing like a cat.

Shows start at 7 p.m. today and Saturday. Matinees start at 2 p.m. Saturday and 3 p.m. Sunday.

General admission tickets are \$15 for adults and \$10 for students, available at The Toy Store, 9 E. Bullion St. in Halley, and Chapter One Bookstore, 190 N. Main St. in Halley. Reserved seating is \$25, with special \$50 reserved seats including champagne and handmade sweet treats. Call 726-9876 or e-mail directors@sunvalleyballet.com.

Winter Wonderland, sponsored by the Kiwanis Club, offers children 10 activities, including an opportunity to make a Christmas ornament, build a gingerbread house and write a letter to Santa, said Anna Svigdal of the Halley Chamber of Commerce.

The event will be from 10 a.m. to 3 p.m. Saturday at the Blaine County Senior Connection, 721 Third Ave. S. in Halley. Santa will attend. Admission is \$5 per child; proceeds go to senior programs. Adults will be admitted free.

The Papoose Club, which benefits school children in the valley, will hold its 18th Annual Holiday Bazaar from 9 a.m. to 5 p.m. Saturday and 10 a.m. to 4 p.m. Sunday at Hemingway Elementary School, 111 Eighth St. W. in Ketchum.

More than 50 vendors from across the West were selected by a jury to feature their work in the show. A variety of crafts will be for sale, including hand-blown glass, gourmet soy candles and ceramics, as well as baked goods, homemade soups and wreaths.

Free activities for children will be augmented with a visit by Santa at 1 p.m. Saturday.

Dog lovers can get pictures of their pets with Santa Paws from 10 a.m. to 2 p.m. Saturday and Sunday at The Dirty Beagle dogwash, 810 S. Main St., Halley.

Barbik's Basement will hold its second annual Bow Holiday Bazaar from 10 a.m. to 3 p.m. Sunday at 111

S. Main St., Halley. The basement will roll out refreshments. Money from the sale of holiday gifts goes to the Animal Shelter of the Wood River Valley.

St. Thomas-Playhouse will wrap up the weekend with a free service of Advent music and classic contemporary poetry from 5:30 to 6:30 p.m. at St. Thomas Episcopal Church, 201 Sun Valley Road, Sun Valley. Halley and Bellevue hotel operators are discounting rates for those who would like to spend the weekend in the valley, said Svigdal.

"Everyone — the Feather Bed Inn, Wood River Inn, American, the Airport Inn, High Country Motel and the Inn at Ellsworth Estate — are offering discounted rates until Dec. 17," she said. "You can't go wrong. Every weekend something's happening."

Karen Bossick may be reached at kbossick@or-trib.com or 208-578-2111.

See what's new online at magicvalley.com

Arts, Crafts & Bazaars Calendar

Annual Holiday Market
Dec. 6 9am-6pm
Dworshak Elem.
19th & Overland
(Farmers Market/Vendors)
Spaces available 678-5472

Wendell Merchants Market
Sat. Dec. 6th 10am-4pm
Santa Arrives at Noon & 3pm/photo \$4
Elementary Honor choir performance at 11am
Lunch 1:13-2:30pm
Free drawing for gift baskets
Variety of Vendors with Great Gift Ideas for Christmas
Contact Sharon 536-8159 or Sharon 536-8111

13th Annual Gooding Craft Show
by Gooding Days of Commerce
Fri. Dec. 5th 10am-6pm
Sat. Dec. 6th 10am-4pm
Accelerated Learning Ctr
306 Main, Gooding
Please bring canned food or unappreciated toy to share with needy families.
Craft & Bake Sale
Sat. Dec. 6th
9:00am-3:00pm
Filer First Baptist Church
(Hwy 30, Filer)

Crafters Don't Forget one of the last craft shows will be December 13 10am-5pm Handcrafted items from seniors
Jerome Senior Center
Still a few tables left
324-5642

Grandy's Christmas Craft Show
Dec. 5th & 6th
Dec. 12th & 13th
Dec. 19th & 20th
8:30am - 6pm
Unique handmade gifts & Holiday Decor
Located at Snake River Sprinkler Garden Center
1675 E. 4100 N. Buhl
From Buhl 1.75 miles E. on Hwy 30

Times-News
magicvalley.com

'Moods of Christmas'
Explore the season's nuances at a Magic Valley Choral concert.

NEXT WEEK IN ENTERTAINMENT

Retirement Sale 15% Off All Items
Mon-Sat 10am-6pm

THE GREAT ESCAPE
109 E. Oak
Pocatello
208-233-5000

Herrett Center for Arts and Science
The College of Southern Idaho

SPECIAL HOURS THIS WEEKEND
Open only for Festival of Trees this Friday, Saturday, and Sunday (the schedule that all visitors to the Herrett Center this weekend must pay special event admission).
Free Faulkner Planetarium shows will be available on a special schedule to Festival of Trees visitors.

Faulkner Planetarium
Adults... \$4.50
Seniors... \$3.50
Students... \$2.50
Children under 12... \$1.50
Entertainment shows - All ages \$4.50

SHOW SCHEDULE BEGINNING DECEMBER 5TH

Here Comes the Sun Saturdays on 2 & 4 p.m.

The Christmas Star Saturdays on 2 & 4 p.m.

Steamrolling Through the Holidays Tuesdays, Fridays and Saturdays at 8:15 p.m.

Special event at 8 & 9:15 p.m. Friday, Dec. 12 "Under the Influence," the newest extreme ski/snowboard movie from Teton Gravity Research. General admission tickets are \$8.

LOCATED AT CSI'S NORTH COLLEGE ROAD ENTRANCE

The Herrett Gift Shop SALE
Dec. 9th through Dec. 23rd
20% off items over \$5 (Some exclusions apply)
Gifts and handmade jewelry for all ages and budgets

www.csi.edu/herrett
www.visitidahoh.org

PERHAPS THE BEST TIME TO PREPARE FOR ALLERGY SEASON IS RIGHT NOW.

If you (or your child) suffer from grass pollen allergies, you may want to know about this. We're enrolling a clinical research study of an investigational drug. The investigational drug is designed to help prevent the body's reaction to grass pollen, rather than to just treat allergy symptoms. What's more, this once-a-day tablet is designed to be placed under the tongue. Study participation includes study-related care from an allergy physician and study medications for the grass-pollen season at no cost.

To find out if you (or your child) may be able to participate, please contact us today.

Asthma & Allergy of Idaho
Richard Henry, M.D., Board Certified
Allergy and Immunology
208-734-6091
Ask for the Research Nurse

grasspollen study
www.grasspollenstudy.com



Singer's mixed-race music celebrates cross-pollination

By Karen Rosack
Times-Herald correspondent

KETCHUM — Stomping feet and raucous applause reverberated through the Church of the Big Wood last December as Peta Batalla took her bows.

"I will return," she promised the crowd. "I have to come back to stop the Gold Mine!"

A year later, the Grammy-nominated singer is back, giving her a chance to shop Ketchum's venerable thrift store again, giving Idahoans more of her rich storytelling and robust song.

She'll appear in concert at 7:30 tonight at Presbyterian Church of the Big Wood in Ketchum.

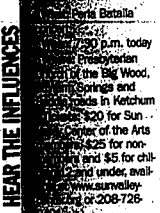
"We hardly ever invite someone back so soon, but we had such an amazing response to her last time. People told us it was the best concert they'd ever been to," said Dan Mankin, director of performing arts for the Sun Valley Center for the Arts.

Batalla surprised last year's audience with her winsome stories and mix of songs, which included "The Little Drummer Girl" with the rhythm beat out on a Spanish gourd and "Silent Night" inspired with a south-of-the-border flavor.

Her new CD, "We Three Kings," which will have its concert debut tonight, was inspired by last year's concert, the Los Angeles-based vocalist and composer said. The CD includes songs that she premiered in Sun Valley last year, holiday songs she recorded with her daughter and favorites that are not considered holiday songs.

"I was really inspired by my concert last year. The setting was breathtaking, and the people in attendance were the icing on the cake," Batalla said. "My band and I prepared a few holiday tunes mixed in with other songs designed to raise spirits, embrace tradition and look forward to the coming year with a positive and hopeful outlook."

Good vibes are a trademark of Batalla's music. "My mission is to spread



HEAR THE INFLUENCES

Batalla never shied away from her heritage as a Mestiza, a woman of mixed race. Instead she embraced it, performing a unique brand of music that she calls "Mestiza music" — a cross-pollination between mariachi songs and American pop songs and the Spanish influences and the European influences from such countries as Argentina.

It has served her well. Her album "Mestiza" was named "Best Independent Release of the Year" by Amazon.com in 1999. And Batalla followed that up with Amazon's Emerging Artist of the Year honors.

"I feel truly blessed because I have all these different influences in my life," said Batalla, who got her start singing backup vocals for Cohen, as well as k.d. lang, the Gypsy Kings and Iggy Pop. "And I love to tell the stories that go along with the songs."

That's just what Batalla did at last year's concert as she introduced a song that resembled the rhythm of a coffee grinder, a South American song giving thanks for life, and a mariachi song written by a Latin American man who had written hun-

dra of No. 1 mariachi songs before succumbing to alcoholism. She also sang a lusty version of the familiar "Guantanamera," along with Leonard Cohen's "Suzanne" and "Hallelujah."

"I didn't know what to expect — I certainly didn't expect such a wonderful variety," said Jurne Gregg, a Boisean who attended the concert. "And what a voice!"

Batalla sings both in English and Spanish, even quipping about her mother's Argentine accent, which she said "sounds like Spanish with an Italian accent."

"Having this other language in my life makes everything so much richer," she said, referring to the Spanish. "And the Mexican culture is so rich, what with its food, its song, its art."

Because of her bicultural background, the Sun Valley Center for the Arts will have her perform today for Woodside Elementary School's dual-immersion students. Batalla also talked about her craft with students at Wood River Middle School and Wood River High School on Thursday.

"It's difficult to put a label

on exactly what Batalla does because there is no one else like her," Mankin said. "She has an absolutely thrilling voice, truly one of the great voices of our time."

Unique Gifts

13th Annual GOODING Holiday Craft Show

Friday, December 5, 2008 ■ 10 am - 6 pm
Saturday, December 6, 2008 ■ 10 am - 4 pm

Gooding Accelerated Learning Center
906 Main St. ■ Gooding, ID.

Sponsored by the
Gooding Chamber of Commerce

Dozens of local crafters & bakers will have a wide array of unique gifts & delicious food for sale!

Donations accepted by bringing canned food or unwrapped toys. Proceeds will go to Helping Hearts & Hands.

For more information - contact: Judy Johnson 934-9475.

goodwill," she said. "I hope through my art I can bring people together, not separate them."

Indeed, both her life and her music are a fusion of people, cultures and lifestyles.

Her father is a native of Mexico who came to the U.S. joined the U.S. Army and eventually opened a record store specializing in Spanish-language music near Santa Monica, Calif., where Batalla grew up. Her mother, who grew up on an Argentine ranch, met Peta's father in an English class after immigrating to the U.S. in search of a better life.

2008 Festival of Trees

Thurs. Dec. 4th
Gala Celebration & Silent Auction
7:00 - 9:00 pm
Tickets \$20.00

Fri. Dec. 5th
Ladies Luncheon & Style Show
2 Beating's
11:15 am & 1:00 pm
Tickets \$10.00

Fri. Dec. 5th
Open to public
3-5 pm - \$2.00 Admission

Sat. Dec. 6th
Photo with Santa & Live Entertainment
10:00 am - 4:30 pm
\$2.00 Admission

Sun. Dec. 7th
Inspirational Entertainment
10:00 am - 4:30 pm
\$2.00 Admission

Free admission to both holidays & tickets for one of the holidays only.
Please call Cynthia at 934-9475 for more information.

QUALES Electronics

CHRISTMAS SALE

EXTENDED HOURS
Mon - Fri 9am-6pm
Sat. 9am-6pm

Sony 52" 1080p LED HDTV \$1899
SAVE 1000!
Instant Rebate & Savings
KDL52V4100

Sony 40" 1080p HDTV \$999
SAVE 1000!
Instant Rebate & Savings
KDL40V4100

BRIDGEMAXX

QUALES Electronics
1730 Kimberly Rd.
733-4910

dish NETWORK

DIRECTV

CHRISTMAS
Is just around the corner
SALE

16" TOOLBOX WITH TRAY
Over 100 pieces of tools
Includes: 100% of the
contents of the
original set.
Save over
1000!
\$699

Christmas Trees
Fresh Plantation-Grown Douglas Fir 5-7'
\$19.99
Your Choice

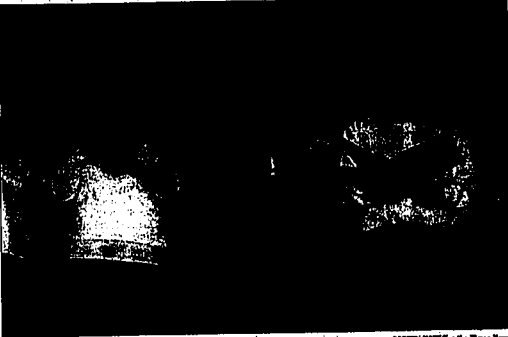
\$29.99

MECHANICAL TOOL SET \$8.99

Black & Decker 82 pc. Drilling & Driving Set \$1299

Krengel's Hardware True Value.
START RIGHT. START HERE.™

628 Main Avenue South • Twin Falls • 736-0080
HOURS: MON.-SAT. 8 a.m.-6 p.m. • SUN. 10 a.m.-4 p.m.
www.truevalue.com/krengels



COLEEN HART/For the Times-News
Kent Severe, center, co-director of Oakley Valley Arts Council's free Christmas concerts, takes a turn with the bartones during rehearsal.

'Celtic Advent Carol' captures hearts of Oakley singers

By Corren Hart
Times-News correspondent

OAKLEY — At its annual free Christmas concerts this weekend, Oakley Valley Arts Council will introduce several new pieces including "Celtic Advent Carol" by David Angerman and Michael Barrett, a 2007 offering that has become the favorite of every member of the choir and accompanists.

"My son even asks me to play it at home because he likes the piano part," said Gloria Muhlestein.

Her son Cody is 17 and sings with the choir while his mother accompanies on piano. The piece has a driving 6/8 meter and is reminiscent of a Celtic folk song, with an anthem that's easily learned but not soon forgotten.

Other selections include "The Holly and the Ivy," "Angel's Carol," a medley of

WORTH THE DRIVE
...Oakley Valley Arts Council's Christmas concert...
...5:00 p.m. - 7:00 p.m. Sunday...
...Seating is first served...
...No reservations...
...No tickets...
...Just lots of great music.

carols including "Donna Novae Pacem" that co-director Kent Severe calls rambunctious, "Midnight Sleigh Bells" by Prokofiev, up-tempo spiritual "Sing Sing of Christmas" and "Come To Where The Shepherds Kneel."

"The Christmas Waltz" is a new offering for this year, and "Bring A Torch, Joannette Isabella" is an old favorite. "I look forward to this con-

cert every year," Muhlestein said. "It gets me in the right mood for Christmas. I missed one year to have a baby, and it was not easy."

Severe and co-director Janna Exon echoed her sentiments.

"I think the 'Celtic Advent Carol' is every member's favorite," Exon said. "It's new, it's exciting, it's different." Severe has directed for about 20 years.

"We have a few new singers every year, and a few who can't join us for various reasons," he said.

"It's been kind of fun. We have a good time."

Musicians Wayne Bench, Craig Vandemere, Josh Bench and Michael Matthews will accompany on guitars, bass and drums on one number.

Corren Hart may be reached at 208-436-1186 or jhmreale@pmi.org.

IN THEATRE

Theater: "A Tuna Christmas," by Mad Hatt'r Theatre and Random Acts of Theatre

Seen in November at the Twin Falls Senior Center

Can redneck be funny? It is in the capable hands of actors Michael Johnson, Dustin Hobbye and director Tony Mammen. The holidays have never been so laughable with a range of wacky characters that seem far-fetched at first, but ring so true that it hurts. It's great holiday goodness.

— Pat Marcantonio, Times-News online editor



Theater: "A Tuna Christmas," by Mad Hatt'r Theatre and Random Acts of Theatre

Seen in November at the Twin Falls Senior Center

Michael Johnson and Dustin Hobbye serve up a feast of delicious characters, male and female, and do it on the fly. Lightning costume changes and deft acting make for a seamless performance. Johnson's matricarch brings to mind shades of Hoffman's Tootsie.

— Diane Stevens of Twin Falls

How about you?
Send us your own 50-word review about local arts and entertainment. Include a peak description of the performance or artwork, such as location, date, title, author or artist; then 50 of your own words letting us know what you thought. Weekly deadline: 10 p.m. Submission by noon Monday to news@timesnews.com.

The Jr. Club of Magic Valley presents the 19th annual

Holiday HOME TALK

to benefit the Ike Kistler Safe House & Crisis Center of Magic Valley

Sunday • Dec. 14th • 1:00-6:00 pm

The following homes will be featured:

Sherm & Loretta Mullins	Linda Virgin
Shawn & Karilyn Barigar	Steve & Pam Brown
Roger & Jamie Vincent	Tammie Hall

Tickets: *\$8⁰⁰ - Children 8 & older are welcome with ticket

Holiday Prize Package Drawing
Entries are submitted with ticket purchase prior to Wednesday, December 10th.

Tickets on sale at:

Everybody's Business	Kimberly Nurseries
Inspired Living	Kurt's Pharmacy
Java Jungle	Rosebuds Florist
Kelly Garden Center	The Little Red Hen
The Black Sheep Gallery	

For more information please contact
Shelly Olsen 731-4463 or
Ruth Mies 920-1602

Giving to teenagers

...the best way to give to teenagers is to give them the opportunity to give to others. This is a great way to teach them about giving and the joy of helping others.

CSI band, trombone concert Tuesday premieres two pieces

Times-News

Expect both familiar carols and entirely new compositions as the College of Southern Idaho's Symphonic Band and the Sledshow Trombone Ensemble perform at 7:30 p.m. Tuesday in the CSI Fine Arts Auditorium.

The "Winter Wonders" concert — with faculty member George K. Halsell directing both the band and the trombone ensemble — features the premiere of a work by a CSI music faculty member and the American premiere of a band arrangement of music by the Russian composer György Sviridov.

The concert will open with a rousing work for trombone choir, "Tower Music," by the Czech-American composer Vaclav Nelhybel.

"The Symphonic Band will then come on stage to offer the premiere performance of "Changing Moods," the fourth installment in the Yellowstone Suite by Gene Conley. Formerly a CSI music student, Conley is now assistant director of the CSI Jazz Band and studies composition with Halsell.

The band will offer several holiday selections, beginning with a delightful arrangement by Jay Dawson of "Angels We Have Heard on High." You'll also hear a combination of the old English Coventry Carol and Johann Sebastian Bach's "Jesu, Joy of Man's Desiring," a transcription of a beautiful choral work, Franz Bleib's "Ave Marie," made popular by the male vocal ensemble Chanticleer; and "On A Winter's Night," an arrangement that includes the three favorite Christmas melodies "O Come, O Come Emmanuel," "Still, Still, Still" and "Carol of the Bells."

The Sledshow Trombone Ensemble will return to open the second half of the program with "Achieved, is the Glorious Work" from Franz Joseph Haydn's oratorio, "The Creation," and will follow with two works by Renaissance-era composer Michael Praetorius,

"Psallite" and "En natus est." The ensemble will perform arrangements of two English Christmas tunes, "Deck the Halls" and "Ding Dong Merrily on High," and close with a jazzy version of "We Three Kings."

The Symphonic Band will return to the stage to perform three selections. The first is a favorite of the Percy Faith Orchestra, "Brazilian Sleigh Bells," a rousing work with a Latin flair. The second is the slow and mysterious "Danse Arabe" from the Peter Tchaikovsky ballet, "The

Nutcracker."

The concert will close with a suite of music by Sviridov from the 1964 Russian film "The Snowstorm," based on a play by Pushkin.

In four movements, the suite consists of a Russian trot, a romance, a waltz and a military march. This arrangement was done by artistic director and commanding officer of the Central Navy Band of Russia, and the CSI Symphonic Band's performance is its American premiere.

Admission is free, but organizers suggest a donation of \$5 per person to the CSI Music Scholarship Fund. Information: Halsell at 732-6767 or ghalsell@csi.edu.

The Papoose Club's 18th Annual Holiday Bazaar

A juried arts show with 50+ artists, wood, ceramics, jewelry, quilts, live music, kid's activities, & more!

Saturday, December 6th, 9:00 am - 6:00 pm
Sunday, December 7th, 11:00 am - 4:00 pm
(Seats on Sunday at 1:00 pm (don't be late!))

Hemingway Elementary School
111 8th Street West, Rasmussen, Idaho

Proceeds benefit children's/youth organizations in our valley. For more info call 726-6642 or visit papooseclub.org

Get Into the Christmas Spirit!

...the best way to give to teenagers is to give them the opportunity to give to others. This is a great way to teach them about giving and the joy of helping others.

All of our children's and adolescent health care programs at the new St. Luke's Magic Valley Medical Center.

Showing at the Planetarium

9 a.m. - Movie: "Frosty the Snowman" (26 minutes)
10 a.m. - Movie: "Frosty the Snowman" (26 minutes)
11 a.m. - "Season of Light"
1 p.m. - "Steamrolling Through the Holidays"
2:30 p.m. - "Here Comes the Sun"
4 p.m. - "Season of Light"
7 p.m. - "The Christmas Star"
8:15 p.m. - "Steamrolling Through the Holidays"

EVENTS CALENDAR

5 FRIDAY

Holiday parade/Twin Falls
The 17th annual Festival of Lights Parade will start at 6 p.m. along Main Avenue, as downtown business and galleries celebrate First Friday. The parade route is from Krongo's. True Value Hardware to Magic Valley High School. This year's theme is "A Magical Holiday." Assembly for floats begins at 5 p.m. Information: Twinfalls.org; Kathy Schroeder, 208-843; or Pam Wright, 308-9978.

Festival/Twin Falls
St. Luke's Magic Valley Health Foundation's Festival of Trees, "A Child's Wish," will be held 10 a.m. to 9 p.m. at the Hermit Center for Arts and Science, with a variety of entertainment. General admission is \$4 for adults; \$3 for seniors 60 and over; and \$1 for children 12 and under. Those attending the festival will receive free admission to special plantarium shows. Proceeds will benefit children's health care at the St. Luke's information: 737-2450. The festival continues Saturday and Sunday. The Hermit Center is on the College of Southern Idaho campus at 315 Falls Ave.

Plantarium/Twin Falls
The Faulstich Plantarium at College of Southern Idaho's Hermit Center for Arts and Science will present "Season of Light" at 11 a.m. and 4 p.m. "Season of Light Through the Holidays" at 1 and 8:15 p.m.; "Here Comes the Sun" at 2:30 p.m.; and "The Christmas Star" at 7 p.m. Plantarium shows are free with paid admission to the Festival of Trees. The Hermit Center is near CSI's entrance on North College Road.

Botany show and sale/Twin Falls
Magic Mud, the College of Southern Idaho Art Department's annual fundraiser, will be held 9 a.m. to 7 p.m. at the CSI Student Union Building. The event will feature the work of student and professional potters. Items include planters, bowls, vases, ceramic dishes, cups, teapots and many unique objects, along with jute-oyed silk scarves and handmade jewelry. Also, students of CSI Art Instructor Mike Youngman will sell various artworks. Featured potters include Brandi Heck, Alta Harris, Carrie Gruesz, Cole Hanson, Shakrath Davies, Alex Brumwell, Andre Stevens and Bill and Sheryl West. The show continues Saturday.

Theater/Twin Falls
College of Southern Idaho Theatre Department presents Charles Dickens' "A Christmas Carol" at 8 p.m. at CSI's Fine Arts Center Theatre. The classic story features the characters Ghosts of Christmas Past, Present and Future; Jacob Marley; Tiny Tim; Bob Cratchit; and Ebenezer Scrooge. Tickets, \$9 for adults and \$9 for senior citizens and students, are available at CSI Fine Arts box office, 732-8288 or Tickets.csid.edu. The production continues Saturday, Wednesday, Thursday and Dec. 12-13.

First Friday/Twin Falls
Springs Attached will perform throughout music 6 to 9 p.m. at the First Friday event at Rudy's — A Cook's Paradise (147 Main Ave. W.), with Eric Elseveld in the kitchen. No cover charge. The evening also includes wine and beer by the glass and specialty food tasting. Also for First Friday, Magic Valley Arts Council and Full Moon Gallery of Fine Art and Contemporary Craft (135 Main Ave. S,

In Main Street Plaza) will host multi-gallery opening receptions with new work by members in the Full Moon Gallery and an exhibit of new work by Magic Valley native artist Olsen in La Galeria. Pequana, 7-9 p.m.; free and open to the public. Twin Falls High School student Andrew Bortz, Olsen's exhibit, Libre Reminders, will be on display in La Galeria Pequana through Jan. 31. Also tonight, Jensen Ringmakers (109 Main Ave. E) will have artwork on exhibit and is open until 8 p.m.

Coffee, painting, music/Twin Falls
Coffeehouse Night is 7:30 to 10:30 p.m. at Hands On/The Divine Grid with live music by Simon Tucker, guitar and studio-free live painting at Hands On. No cover charge. Hands On/The Divine Grid are at 147 Shoshone St. N. Information: 737-3111. The arts center is at 249 Main Ave. W.

Crafts class/Twin Falls
"Make Christmas Ornaments and Christmas Candy" classes will be held 10 a.m. to 1 p.m. at Twin Falls Creative Arts Center. The classes are for adults and children. Another class is scheduled Dec. 12. Cost is \$25 per person. Classes are limited. Pre-registration required: 737-3111. The arts center is at 249 Main Ave. W.

Dance/Twin Falls
Disabled American Veterans Auxiliary will hold a public dance at 8 p.m. at the DAV Hall, \$2 donations requested. The hall is at 453 Shop Ave.

Jazz/Twin Falls
Great Hot Jazz with drummer Tony Bowler will perform 7 to 10 p.m. at Pandora's restaurant. No cover charge. Pandora's is at 516 Hansen St.

Folk, country/Twin Falls
Renae Lewis — Front Porch Flavor will perform folk, country, light rock and Irish songs, 8:30 to 10:30 p.m. at Canyon Crest Dining and Event Center. No cover charge. Canyon Crest is at 330 Canyon Crest Drive.

Rock/Twin Falls
Millstone plays 9 p.m. to 1 a.m. at The Oasis. No cover charge. The Oasis is at 1007 Blue Lakes Blvd. N.

Country, rock/Twin Falls
Copperhead will perform from 8:30 p.m. to 12:30 a.m. at Montana Steakhouse. No cover charge. The steakhouse is at 1826 Canyon Crest Drive.

Style show/Gooding
Ladies luncheon and style show at Gooding County Hospital

Foundation's Festival of Trees will be held at the Idaho School for the Deaf and the Blind round building. Two luncheon settings are available at 11:15 a.m. and 1 p.m. Gooding Hospital Auxiliary ladies will style vintage clothing of past eras. New fashions will be provided by Black Rock Clothiers of Buhl and Sheepskin Coat Factory in Ketchum. Tickets are \$10 per person. Information: 934-5760.

Festival/Gooding
Gooding County Hospital Foundation's Festival of Trees will be open 3 to 5 p.m. at the Idaho School for the Deaf and the Blind round building. The theme is "Christmas Past, Christmas Present," celebrating the Gooding Centennial. Admission is \$2 per person. The festival continues Saturday and Sunday. The building is at 202 14th Ave. E. Information: 934-5760.

Holiday craft show/Gooding
The 13th annual Holiday Craft Show, sponsored by Gooding Chamber of Commerce, will be held 10 a.m. to 6 p.m. at Gooding Accelerated Learning Center. The event features dozens of local crafters and home-based businesses and bakers with gifts, toys, jewelry, holiday decorations and food for purchase. Lunch will be provided by Helping Hearts and Hands; cost is by donation. Admission to the craft show is by donation of unwrapped toys or canned food items to share with local needy families at Christmas. The show continues Saturday, information: Judy Ewerton, 934-0475. The center is at 806 Main St.



Holiday music/Ketchum
Pierle Battaglia, a Los Angeles-based vocalist, composer and arranger, will perform at 7:30 p.m. at Presbyterian Church of the Big Wood, as part of Sun Valley Center

for the Arts Concert Series. Battaglia sings in English and in Spanish. Her first gained international attention as a backup singer for Leonard Cohen. Battaglia's new CD, "The Three Hebrews," and the "The Gallery Proceeds" will go to children in Colón, Mexico. Free admission. Information: 934-4890. The fundraiser continues Saturday. The gallery is at 218 Main St.

Holiday craft show/Buhl
Christmas Craft Show will be held 8:30 a.m. to 8 p.m. at Grandy's and Juniper Street Farmhouse. Information: Leanne at 280-3198 or Brandy at 404-4148. The craft show continues Saturday and Dec. 12-13 and 19-20. Grandy's is at Snake River Sprinklers Garden Center, 1875 E. 4100 N., on U.S. Highway 30.

Music/Burley
Cassia Health Care Foundation's Festival of Trees will be held 10 a.m. to 8 p.m. at Mini-Cassia College of Southern Idaho's gym (old Burley High School). Admission is \$1 for adults and \$0 cents for children. The festival continues Saturday. Information: 654-2770 or 678-1553. The Mini-Cassia CSI center is at 1600 Park Ave.

Music/Burley
Krokers DJ featured 9 p.m. to 1 a.m. at the Riverside. Cover charge is \$2. Riverside is at 157 W. U.S. Highway 30.

Music/Rupert
Ratz Azz performs 9 p.m. to 1 a.m. at the Blue Room. Cover charge. Blue Room is at 613 Fremont Ave.

Country/Daico
The Fugitives perform 9 p.m. to 1 a.m. at Shakers. No cover charge. Shakers is at 826 Idaho Highway 61.

Art, crafts/Filer
The annual Christmas Procrastinator's Sale will be held 10 a.m. to 7 p.m. at Lion's Gate Gallery. Local artists and craftsmen will show and sell their latest work. One of a-kind items will be on display including woodturning, wood carvings, ceramics, gift baskets, prints, paintings, jewelry and crafts. Free admission. Information: 543-4690. The show continues Saturday. The gallery is at 219 Main St. (old Odd Fellows Building).

Fundraiser/Filer
A book sale and fundraiser will be held 10 a.m. to 7 p.m. at Lion's Gate Gallery. The event is sponsored by Lion's Gate. The event is sponsored by Lion's Gate. The event is sponsored by Lion's Gate.

Holiday craft show/Buhl
Christmas Craft Show will be held 8:30 a.m. to 8 p.m. at Grandy's and Juniper Street Farmhouse. Information: Leanne at 280-3198 or Brandy at 404-4148. The craft show continues Saturday and Dec. 12-13 and 19-20. Grandy's is at Snake River Sprinklers Garden Center, 1875 E. 4100 N., on U.S. Highway 30.

Holiday open houses/Buhl
Buhl Christmas Open Houses will be held at several locations.

featuring Christmas gift ideas. Open houses are scheduled at Rivers Edge Antiques & Collectibles, 11 a.m. to 5 p.m. (every weekend through Dec. 20, 116 Broadway Ave. N., 543-8538; Snyder Blue Rock Vineyard, Winery & Gift Shop, 11 a.m. to 8 p.m. (every weekend through Dec. 20, 4600 N. 1200 E., 543-8938; and Newman Picture Framing & Antiques, 10 a.m. to 5 p.m. (open Monday to Saturday until Dec. 29), 1633 E. 4000 N., 543-4253. Free admission.

Country/Jerome
Country Classics performs 8 p.m. to midnight at Snake River Elks Lodge. Cover charge is \$5 per person or \$9 per couple. Everyone is welcome. Dinner available 8-9 p.m. The lodge is at 412 E. 200 S.

Calendar continued on C6

25TH ANNIVERSARY SALE!!
Buy 1 get 1 at 1/2 Price!*

**Equal or Lesser Value*

- Comprehensive Eye Exams
- Lasik Surgery Consultation
- Contact Lenses
- Custom Half Moon Eyeglasses
- 30 Day Guarantee You'll Love Your New Glasses or We'll Replace Them! *in Cornea

FINE EYEWEAR IN ONE HOUR

Monday - Friday, 9am - 6pm
After hour appointments available

Mountain West OPTICAL

731 North College Road • Twin Falls
208-734-EYES (3937) • Fax: 208-734-7558

Special Orders Welcome!

Time for the Holidays
OPEN HOUSE

Friday, Dec. 5th: 10am - 8pm
Saturday, Dec. 6th: 10am - 5pm

Santa's bag is filled with Prizes and Discounts!

Gift & Home Decor Shop
217 Main St. N. • Kimberly, ID 83341
Store hours: Mon-Thurs 10-6
Fri-Sat 10-8

ST. BENEDICTS FAMILY MEDICAL CENTER Welcomes:

Rhonda Robbins, M.D. Board Certified Gynecologist

Dr. Robbins comes to St. Benedicts with over 20 years medical experience treating all gynecological conditions

ST. BENEDICTS FAMILY MEDICAL CENTER
1400 South 2nd St. • Twin Falls, Idaho

Jacuzzi

...and Labor

...and Labor

...and Labor

...and Labor

EVENTS CALENDAR

Calendar continued from C6

TUESDAY

Book signing/Twin Falls
Glenn Beck, author of the new release "The Christmas Sweater" and the best-selling "An Inconvenient Book" will sign copies of his books 3-4 p.m. at Barnes & Noble Bookstore. Autographing guidelines include: Unlimited copies of "The Christmas Sweater" are allowed; with at least one copy of "The Christmas Sweater" up to two copies of backlist titles are permitted; Beck will not personalize his autograph and will not sign any promotional or other nonbook items. Information: 733-5554. Barnes & Noble is at 1239A Pole Line Road.

Classical/Twin Falls
College of Southern Idaho's Symphonic Band Concert will be held at 7:30 p.m. at CSI's Fine Arts Center auditorium. The concert also features the Shoshone Trombone Ensemble. Admission is a suggested \$5 donation at the door to the CSI Music Department scholarship fund.

Planetarium/Twin Falls
The Faulkner Planetarium at College of Southern Idaho's Herrett Center for Arts and Science will present "The Christmas Story" and "Stargazing through the Holidays" at 8:15 p.m. Education-show tickets are \$4.50 for adults, \$3.50 for seniors and \$2.50 for students. Tickets for the 8:15 p.m. entertainment show are \$4.50 for all ages. The Herrett Center is near CSI's entrance on North College Road.

Gallery opening/Twin Falls
Twin Falls Creative Arts Center's Christmas Student Art Show gallery opening will be 6:00-9 p.m. at Virgie Valley Arts Council. Refreshments will be served. The show, featuring artwork of current students, is on display through Dec. 22. Information: 737-9111. The arts council office is at 132 Main Ave. S.

Jazz/Twin Falls
Great Riff Jazz with drummer Tony Bowler will perform 6-9 p.m. at Pandora's restaurant. No cover charge. Pandora's is at 516 Hansen St.

Lecture/Ketchum
Author Michael Chabon will speak at 7 p.m. at Church of the Big Wood, as part of Sun Valley Center for the Arts Lecture Series. His talk is on why superheroes, war costumes, and other mysteries related to comic books and super powers. The presentation fits in with the Center's multidisciplinary project, "Superheroes & Secret Identities." Chabon won the Pulitzer Prize in 2001 for his novel "The Amazing Adventures of Kavalier and Clay." Tickets, \$15 for Sun Valley Center members and \$20 for nonmembers, are available at SunValleycenter.org; 726-9491, ext. 10, or at the center, 726 St. In Ketchum, Church of the Big Wood is at 100 Saddle Road.

Music/Sun Valley
Pianist Larry Harsbarger performs 6-9 p.m. at Ram Restaurant in Sun Valley Village at Sun Valley Resort. No cover charge. Restaurant reservations: 622-2800.

Comedy/Albion
Sage Mountain Grill Comedy Club will perform at 7 p.m. at the restaurant. Tickets are \$10 per person. Information: 873-6688. Sage Mountain is at 225 N. Main St.

10 WEDNESDAY

Concert, lecture/Twin Falls
The Herrett Forum presents Del Parkinson with a piano concert and lecture, "Classical Piano Favorites," at 7:30 p.m. in Rick Allen Community Room at Herrett Center for Arts and Science. Parkinson is professor of piano at Boise State University. Free admission; open to the public.

Dance/Twin Falls
The Eugene Ballet will perform the holiday classic "The Nutcracker" at 7:30 p.m. at College of Southern Idaho's Fine Arts Center auditorium. The performance features new adaptations of the show. Nutcracker Prince will battle the Mouse King (in guise of Ernst Flynn), who arrives in his new private ship, amidst the many mice and soldiers. In

the second act, the Sugar Plum Fairy and her Cavalier will reign over the celebration in honor of Clara at which many surprises wait in store. In addition to the cast of professional dancers, "The Nutcracker" features 46 local children as party guests, ladybugs, mice, flowers and angels. Tickets are \$18 for adults and \$15 for children, available at the CSI Fine Arts box office (8:30 a.m. to 4:30 p.m. Monday to Friday). Tickets.csid.edu or 733-6288.

Theater/Twin Falls
College of Southern Idaho Theater Department presents Charles Dickens' "A Christmas Carol" at 8 p.m. at CSI's Fine Arts Center Theater. Tickets, \$8 for adults and \$6 for senior citizens and students, are available at CSI's Fine Arts Center box office, 732-8288 or Tickets.csid.edu. The production continues Thursday and Dec. 12-13.

Music/Twin Falls
Open Mic Night will be featured at 9 p.m. in the Blue Room at Woody's. No cover charge. Woody's is at 213 Fifth Ave. S.

Holiday concert/Shoshone
Shoshone High School and Middle School choir and band students present their annual Holiday Concert at 7 p.m. at the Shoshone Schools gym. "Christmas Through the Ages" is directed by Sarah Butcher. Free admission. The school is at 61 E. Idaho Highway 24.

Music/Sun Valley
Pianist Larry Harsbarger performs 6-9 p.m. at Ram Restaurant in Sun Valley Village at Sun Valley Resort. No cover charge.

Restaurant reservations: 622-2800.

11 THURSDAY

Theater/Twin Falls
College of Southern Idaho Theater Department presents Charles Dickens' "A Christmas Carol" at 8 p.m. at CSI's Fine Arts Center Theater. Tickets, \$8 for adults and \$6 for senior citizens and students, are available at CSI's Fine Arts box office, 732-8288 or Tickets.csid.edu. The production continues Dec. 12-13.

Christmas program/Buhl
Family Christmas Program will be held 6-8 p.m. at Buhl Public Library. The event features stories, prizes, a skit, crafts, a guest reader and music by the Jones family. Free admission. Information: 643-6500. The library is at 215 Broadway Ave. N.

Choir concert/Buhl
The award-winning choir of Buhl Middle School and Buhl High School will hold an International Christmas Concert at 7:30 p.m. at the Buhl High auditorium. Admission is a suggested donation of \$2 for students, \$3 for adults and \$10 for families.

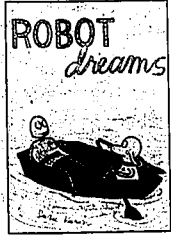
Music/Sun Valley
Pianist Larry Harsbarger will perform 6-9 p.m. at Ram Restaurant in Sun Valley Village at Sun Valley Resort. No cover charge. Restaurant reservations: 622-2800.

ON-GOING EXHIBITIONS

Art/Buhl
"Creative Nature's" An Idaho narrative... paintings from Idaho's 44 counties, will be on display through Dec. 31 at Eighth Street Center, Gallery hours: 10 a.m. to 6 p.m. Mondays through Fridays, 10 a.m. to 5 p.m. Saturdays and 11 a.m. to 4 p.m. Sundays. Free admission. Information: 726-8160. Gallery Delvivo is at 320 First Ave. N., Suite 101.

Art/Ketchum
"Superheroes & Secret Identities" exhibition will be on display through Jan. 16 at Sun Valley Center for the Arts. The exhibition features the work of three contemporary artists who are inspired by the idea of the superhero. Mark Newport's knitted fleece-superhero costumes, hanging empty on the wall; Dulce Picazo's photographs of Mexican immigrants in U.S. and Mexican superhero costumes as they work at low-wage jobs; and Robble Cooper's photographs of computer-generated superheroes. Gallery hours: 9 a.m. to 5 p.m. Monday through Friday. Free admission. Information: SunValleycenter.org or 726-9491. The Center is at 314 S. Second Ave.

Graphic novels/Ketchum
"Contemporary Graphic Novels" an exhibition of work by Sara Varon, Caryl Pedrosa and Danica Novgorodoff, will be on display through Jan. 16 at Sun Valley Center for the Arts. The exhibition features the artists' work with their stories about robots strolling Brooklyn, the desolate landscape of the Mexican-American border and the rolling hills of a child's imagination. Gallery hours: noon to 5 p.m. Wednesday through Friday. Free admission. Information: SunValleycenter.org or 726-9491. The Center is at 314 S. Second Ave.



PREVIEW DAY IS FRIDAY. SHOP 8AM-11PM. ONE DAY SALE IS SATURDAY. SHOP 7AM-11PM.

ONEDAYS/SALE

MORNING SPECIALS - FRIDAY AND SATURDAY UNTIL 1PM ONLY

<p>SPECIAL - UNTIL 1PM ONLY 19.99 SWEATERS FOR MISSES By Get It Done It and StyleCo. Reg. \$46-\$54, sale 29.99-\$39.99.</p>	<p>TAKE \$10 OFF! USE YOUR COUPON BEFORE 1PM ON ONE SALE OR CLEARANCE PURCHASE OF \$25 OR MORE. Doesn't apply to other Morning Specials.</p>	<p>MACY'S COUPON Use this coupon before 1pm Friday or Saturday, December 5 or 6</p> <p>\$10 off one sale or clearance purchase of \$25 or more before 1pm</p> <p>EXTRA DISCOUNT DOESN'T APPLY TO MORNING SPECIALS</p> <p>003410210932021818</p>	<p>SPECIAL - UNTIL 1PM ONLY 24.99 IZOD SWEATERS For him, Reg. \$58, sale 26.10.</p>
<p>SPECIAL - UNTIL 1PM ONLY 24.99 VESTS AND JACKETS FOR HER Frostek® fleece by Charter Club, Reg. \$55-\$60.</p>	<p>SPECIAL - UNTIL 1PM ONLY \$99 DIAMOND HEART LOCKET. 2 color, in sterling silver. Reg. \$400, sale \$200.</p>	<p>SPECIAL - UNTIL 1PM ONLY 34.99 each STERLING SILVER JEWELRY Entire stock of boxed sterling silver jewelry featuring sentimental inscriptions. Reg. \$80, sale \$40.</p>	<p>SPECIAL - UNTIL 1PM ONLY 99.99 RAINWEAR AND TOPCOATS From Galt Klein and Lauren. Reg. \$250-\$395, sale \$125-\$197.50. In tailored Clothing.</p>
<p>SPECIAL - UNTIL 1PM ONLY 14.99 SWEATERS FOR JUNIORS Ribbed styles from Hooded Up, Reg. 19.99.</p>	<p>SPECIAL - UNTIL 1PM ONLY 60% OFF CHARTER CLUB PAJAMAS FOR HER Super-soft pajamas in solid colors and prints, Reg. \$54, special \$21.60.</p>	<p>SPECIAL - UNTIL 1PM ONLY 79.99 PACIFIC COAST LUGGAGE SET Valises & rolling luggage set. Features 22" & 20" expandable uprights, plus wheeled tote. Reg. \$200, sale 99.99.</p>	<p>SPECIAL - UNTIL 1PM ONLY 14.99 CHILI POT Tools of the Trade® hard-anodized 5-quart chili pot. Reg. 39.99, sale 29.99.</p>

Save 20% more the day you open a Macy's account - plus the next day. That's 20% off our regular and sale priced. Our usual new-arrivals discount is 15%. From through December 24. And there are even more rewards to come! Subject to credit approval. Excludes services, certain licensed departments and Macy's Gift Cards. On furniture, mattresses and area rugs, the new-arrivals savings is limited to \$100. Visit your local Macy's for details.



Help the community, earn Rewards.
A \$25 enrollment fee gets you 10% Rewards on most Macy's purchases made with your Macy's Card through 12/31/08. \$10 of the fee goes to charity.

Help the community, earn Rewards. A \$25 enrollment fee gets you 10% Rewards on most Macy's purchases made with your Macy's Card through 12/31/08. \$10 of the fee goes to charity. For terms and conditions, see store.



Monthly Karaoke CORNER

DAILY

Twin Falls
Krookers 8 p.m. to 1 a.m. Fridays and Saturdays and 9 p.m. to 1 a.m. Sundays through Thursdays, at Klover (Jeb) Lounge, 402 Main Ave. N. No cover charge.

FRIDAYS

Burley
Karaoke, 9 p.m. to 1 a.m. at the 610 Club, 1054 Overland Ave. No cover charge.
Rupert
Krookers Karaoke, 9 p.m. to 1 a.m. at Melody Bar, 502 South St. No cover charge.

SATURDAYS

Burley
Karaoke, 9 p.m. to 1 a.m. at the 610 Club, 1054 Overland Ave. No cover charge.
Rupert
Karaoke by Lou, 9 p.m. at the Blue Room. No cover charge. Blue Room is at 613 Fremont Ave.

Declo
Miller Time Karaoke, 9 p.m. to 1 a.m. at Big Kahuna, 9 E. Main St. No cover charge.

TUESDAYS

Burley
Krookers Karaoke, 9 p.m. to 1 a.m. at Cheers, 163 W. U.S. Highway 30. No cover charge.

WEDNESDAYS

Twin Falls
Krookers Karaoke, 8:30 p.m. to 1 a.m. at Montana Steak House, 1826 Canyon Crest Drive. No cover charge.
Lone Wolf Entertainment, 8:30 p.m. to 1 a.m. at Pioneer Club, 1519 Kimberly Road. No cover charge.
Rupert
Karaoke by Lou, 9 p.m. at the Blue Room. No cover charge. Blue Room is at 613 Fremont Ave.
Paul
Krookers Karaoke, 9 p.m. to 1 a.m. at Red's Bar, 8 E. Idaho St. No cover charge.

THURSDAYS

Twin Falls
Lone Wolf Entertainment, 8:30 p.m. to 1 a.m. at Pioneer Club, 1519 Kimberly Road. No cover charge.
Karaoke Corner, a roundup of regularly scheduled karaoke, is published on the first Friday of each month; one-time karaoke events are in the main events calendar. Send submissions to Ramona Jones at ramona@magicvalley.com.

Calendar deadlines

Don't miss your chance to tell southern Idaho about your arts event. The regular deadline for entries for the Entertainment calendar is 5 p.m. the Friday prior to publication. Send submissions to Ramona Jones at ramona@magicvalley.com.

Piano professor returns to Herrett Forum

Times-News

Del Parkinson, a professor of piano at Boise State University, will make a return engagement to the Herrett Forum at 7:30 p.m. Wednesday to discuss and perform piano music that almost everyone knows. In his program, "Classical Piano Favorites," Parkinson will discuss the instrument's immense popularity over the past three centuries. The piano has been likened to an orchestra in a single instrument, Parkinson said of his presentation. He will discuss and perform selections such as Beethoven's "Moonlight Sonata" and



Parkinson

Debussy's "Clair de Lune." Parkinson has performed several times in Twin Falls,

Including a past Herrett Forum appearance. He has performed extensively in Europe, Asia, Mexico and the U.S. and has taught at BSU since 1985. He is a recipient of the Governor's Award for Excellence in the Arts. The Herrett Forum is a monthly series of presentations usually held the third Wednesday evening of each month during the school year. No tickets are required for this free public lecture. Doors open at 7 p.m. The Herrett Center for Arts and Science is on the north side of the College of Southern Idaho campus at the North College Road entrance.

Festival of Trees

"A Child's Wish"

Herrett Center for Arts and Science
North End of CSI Campus, Twin Falls

From our family to yours,
The Times-News
Invites everyone to be our guests on

"Family Day"

Sunday, December 7
11 a.m. - 5 p.m.

You will receive FREE admittance (family of 6) with coupon from this Sunday's Times-News

Join Us In Supporting
St. Luke's Magic Valley Health Foundation!

Benefiting the Neonatal Intensive Care Unit and Children's Health Programs at the new St. Luke's Magic Valley Hospital.

TIMES-NEWS

magicvalley.com

ANNIVERSARY SALE

Open House

1/2 OFF
 9 AM - 11 PM
 12/5 - 12/7

Sale good on
 Coats, RV Supplies,
 Goggles, Bags &
 much more!



NEW WINTER HOURS: Mon. thru Sat. 9-5pm



DOORS OPEN 9AM
SALE THURS. - SAT. ONLY
 Located 6 miles East of Twin at the Hansen/Kimberly Exit 182.



www.XtremeRV.com

Disclaimer: Some restrictions apply. Does not include belts, oil, cans or parts.
 ©, TM and the BRP logo are trademarks of Bombardier Recreational Products Inc. or its affiliates.

Lurey & Retha Anderson

FREE HOT DOGS on Saturday!
BEST SERVICE IN IDAHO!



INSIDE: LT, Rivers lead Chargers over Raiders, D3

INSIDE: Prep Rally, D2 | Scoreboard, D3 | Local roundup & college hoops, D4 | Comics, D5 | NFL & College news, D6



Golden Eagle guard Noelle Millicic gets a stiff arm to the face after successfully passing the ball off to a teammate for a layup Thursday evening in the College of Southern Idaho's home game.

CSI cruises over Lethbridge

By Mike Christensen
Times-News writer

For about 10 minutes, Lethbridge College gave the College of Southern Idaho women a game. But once fatigue set in for the short-handed visitors, the No. 23 Golden Eagles dominated their way to a 103-49 win on the opening night of the Boise Office Equipment Tournament.

Four CSI players recorded double-doubles, led by Shauneice Samms' 24-point, 11-rebound night.

"(Lethbridge) came out strong, hit some shots and we got lost a bit defensively. But once the legs go — and their legs went — their shots

stopped falling and we were able to get some easy baskets," said CSI head coach Randy Rogers.

Kim Gambelin * had 16 points and 12 boards. Soana Loret netted 15 to go with 11 rebounds and LaCale Pringle-Buchanan had 10-point, 12-rebound night.

"We just started clicking. We figured out what they were doing and started rolling," said Gambelin, who got a spot in the starting lineup Thursday. "Coach had faith in me and gave me a chance to (start) and I wanted to prove him right."

The Golden Eagles (6-3) outbounded the Kodiaks 80-31 and held Lethbridge to 27 percent shooting.

Lethbridge guard Kayla Lambert scored seven quick points as the Kodiaks jumped out to a 9-2 lead. But the Golden Eagles responded with a 17-2 spurt to take charge. Lethbridge hung around for a few more minutes, but Samms scored eight consecutive points in a 18-4 run to end the half that gave CSI a 52-33 lead at intermission.

A winded Kodiak team put up little resistance from there as CSI made a series of layups in a 22-0 run that saw the Eagles go up 74-33 and hold Lethbridge scoreless for the first 10:09 of the second half.

Please see CSI, Page D2

Murtaugh High drops girls hoops program

By Bradley Guire
Times-News writer

Murtaugh High School has cancelled its girls basketball program for this season, but the school could face penalties if it failed to notify the District IV Board of Control in time.

Murtaugh School District Superintendent Michelle Capps confirmed the cancellation Thursday and said that every school scheduled to play the Red Devils was notified via e-mail. Board of Control President Rod Malone said that Murtaugh had not filed a notice with the board.

"Nobody turned in anything officially," Malone said.

If the board decides that Murtaugh did not take the appropriate action, it could face monetary fines.

Idaho High School Activities Association Executive Director John Biletz said the matter will stay at the local level and confirmed that the fine could be up to three times the annual dues of \$250 or other probationary terms. Sean Stanley, basketball commissioner for District IV, said that he was notified earlier this week that officials' services would not be needed.

The Red Devils cancelled the season after playing three games.

The first cancelled game was their Northside Conference contest with Richfield, which was to be played Tuesday, Dec. 2.

Opponents will receive a forfeit victory for their season record, but the loss of Murtaugh should not affect the district's number of Class 1A Division II state tournament berths, currently set for three.

Capps and athletic director Adam Johnson both said that a girls program was expected to resume next season, but that a lack of players was the reason for the cancelled program.

"We had some girls move and some drop out," Capps said.

The boys program is still active and in no danger of cancelling any games.

Bradley Guire may be reached at 208-735-3229 or bguire@magicvalley.com.

INSIDE

See all the early season standings for girls and boys high school basketball.

See page D2

Gutierrez, Wright and Hughes lead Wildcats to 13-point win

By Diane Phillips
Times-News writer

Inconsistency lost to Intensity as the Filer Wildcats beat the Buhl Indians 54-41 in the opening game for both teams in the Sawtooth Central Idaho Conference.

"We came out with intensity and got on them real quick," said Filer coach Gary Mellinger. "Buhl didn't quit and they kept inching back in the game, but the girls were mature enough to stay in the game. But we need to be more consistent and focused for 40 minutes instead of 32 here and eight there."

The Wildcats had three players scoring in double digits with Rocco Gutierrez scoring a team-high 13 points followed by Ari Wright with 11 and Namie Hughes with 10. For the Indians, it was a matter of giving Filer too many second chances and a weak game on the boards.

"The difference in the game was inconsistent play from every player and position," said Buhl coach Karen Peterson.

"And we absolutely did not box out well."

Mollie Bourner led Buhl with 10 points, including a pair of 3-pointers.

Buhl (0-4, 0-1) hosts Wood River on Saturday, while Filer (3-1, 1-0) entertains Wendell on Tuesday as conference play continues.

Filer EA, D41 41
Buhl IB, D41 41
Buhl IB, D41 41

Head Coach: Gary Mellinger, Filer; Karen Peterson, Buhl
Assistant: Mike Wilson, Buhl; Nancy Coleman, 10, Buhl
Secretary: The Student & Team, 10, Buhl
Sponsor: The Student & Team, 10, Buhl
Sponsor: The Student & Team, 10, Buhl
Sponsor: The Student & Team, 10, Buhl
Sponsor: The Student & Team, 10, Buhl
Sponsor: The Student & Team, 10, Buhl

Still unbeaten

Jerome grinds out win over Burley

By Ryan Howe
Times-News writer

It was the battle everyone expected.

Whenever Jerome and Burley's girls basketball teams get together, it's knock-down, grind-out basketball," as Burley coach Gordon Kerbs described.

Round 1 went to Jerome, as the Tigers pulled away in the final three minutes to win 46-37 at home Thursday night. "Burley is one of the best teams we've played all season long," said Jerome coach Brent Clark. "We knew it was going to be a battle — it always is with Burley. This is going to be a battle all season long with them. We were fortunate tonight to hit some big shots at the end."

The biggest shot was Aubree Callen's 3-pointer with 1:46 remaining, which put Jerome up 42-37. Callen hit a jumper on the next possession to put the game far enough out of reach to force Burley to foul in the final minute.

Callen finished with a team-high 16 points, but was held in check most the night by Burley's Teresa Waymont.

The Callen-Waymont matchup was intriguing to watch. So was the Carrie Thibault-Kerbs.

Kerbs matchup. Clark praised Thibault for holding Burley's Kerbs to 18 points.



Jerome's Aubree Callen drives to the hoop as Burley's Teresa Waymont (30) defends during their girls basketball game Thursday at Jerome High School.

Shots were hard to come by as the teams slugged it out to an 18-17 halftime score with Jerome leading.

Ten of the Tigers' 18 first-half points came from the

free throw line.

"You don't get a lot of shots against Jerome, and they don't get a lot of shots against us," Gordon Kerbs said. "It's really fun basketball when

these two teams play. There's a lot of respect between the two programs."

Burley took the lead, 35-34.

Please see INSIDE, Page D2

"You don't get a lot of shots against Jerome, and they don't get a lot of shots against us. It's really fun basketball when these two teams play. There's a lot of respect between the two programs." — Gordon Kerbs, Burley coach

BSU likely to play in Poinsettia Bowl

Times-News

With unbeaten and 12th-ranked Ball State turning down an offer to take on No. 9 Boise State (12-0) in the Roddy's Humanitarian Bowl on Dec. 30, it's looking more and more like the Broncos will land in the Dec. 23 Poinsettia Bowl against No. 11 TCU (10-2).

While BSU still holds out hope for a spot in a Bowl Championship Series game, the Broncos are considered long shots for one of the five big-money

games. Barring an upset by UCLA over USC this weekend, it looks like it will be two-loss Ohio State that will get the last at-large berth.

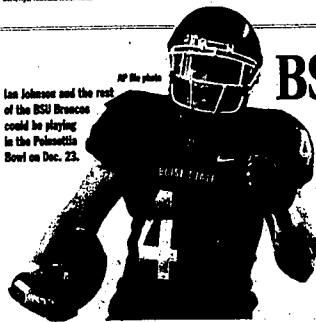
The latest projections by the Associated Press have the SEC champ (either Alabama or Florida) facing Oklahoma for the national title, while USC and Penn State square off in the Rose Bowl.

The Orange Bowl is expected to match the ACC champ against Cincinnati, while the Fiesta Bowl takes Texas and Ohio State. The Sugar Bowl would then pair

the SEC title game loser against No. 6 Utah.

The AP is projecting TCU, the Mountain West Conference runner-up, and BSU to meet at the Poinsettia Bowl, which will air on ESPN at 6 p.m., Dec. 23. The Humanitarian Bowl, meanwhile, will likely pit Nevada against Maryland. The Las Vegas Bowl confirmed on Thursday that BYU would face Saturday's Arizona-Arizona State winner in its game.

The BCS pairings will be announced at 6 p.m., Sunday on FOX.



Las Johnson and the rest of the BSU Broncos could be playing in the Poinsettia Bowl on Dec. 23.

VARSITY BASKETBALL STANDINGS

As of Dec. 3

Boys

Girls

Table with columns for Class Four-Five-Six, Team, Conf., All, and scores for various schools like Idaho Falls, Twin Falls, etc.

Table with columns for Class 4A, Great Basin Conference West Division, Team, Conf., All, and scores.

Table with columns for Class 3A, Sawtooth Central Idaho Conference, Team, Conf., All, and scores.

Table with columns for Class 2A, Canyon Conference, Team, Conf., All, and scores.

Table with columns for Class 1A Division I, Snake River Conference, Team, Conf., All, and scores.

Table with columns for Class 1A Division II, Northside Conference, Team, Conf., All, and scores.

Records through Dec. 2

Class 5A

Table with columns for Team (1st-place), Rec., Pts., and scores for Class 5A.

Class 4A

Table with columns for Team (1st-place), Rec., Pts., and scores for Class 4A.

Class 3A

Table with columns for Team (1st-place), Rec., Pts., and scores for Class 3A.

Class 2A

Table with columns for Team (1st-place), Rec., Pts., and scores for Class 2A.

Idaho High School Boys Basketball Media Poll

Table showing media poll results for boys basketball, including team names, coaches, and poll numbers.

Idaho High School Girls Basketball Media Poll

Table showing media poll results for girls basketball, including team names, coaches, and poll numbers.

2008 prep football postseason honors

Large table listing 2008 prep football postseason honors, including player names, schools, and positions.

Jerome

Continued from page D1
with just under six minutes to play in the fourth quarter...

throws to Burley's 10.
Jerome improved to 2-0 overall, but more importantly...

CSI

Continued from page D1
The Golden Eagles will face Foothill (Calif.) Community College at 6 p.m., tonight.

Mortimer's second try of the second half put the Hawks up 68-54, but the Bruins used full-court pressure to end the game on a 22-1 run.

minutes for the Hawks, tallying nine points, nine rebounds, four assists and three blocks.

Table with columns for Women's games, Men's games, and Boise State equipment tournament details.

Boise State Equipment Tournament

Boise State equipment tournament details, including dates, times, and participating teams.

LT, Rivers lead Chargers to win over Raiders

SAN DIEGO (AP) — The San Diego Chargers finally looked like world-beaters. It's probably too late.

LaDainian Tomlinson scored on a 3-yard run against his favorite punching bag and Philip Rivers threw three touchdown passes, including a 59-yarder to Vincent Jackson, to give the Chargers a 34-7 victory against the Oakland Raiders on Thursday night.

It was San Diego's 11th straight win over their archrivals in a series dating to the birth of the AFL in 1960.

The Chargers (5-8) snapped a three-game losing streak and won for the second time in seven games. Once considered favorites to reach the Super Bowl, they're still going to need a miracle to reach the playoffs. They trail Denver by 2 1/2 games in the AFC West and the Broncos have four to play.

San Diego's Darren Sproles

caught two TD passes. His 87-yard touchdown on a punt return in the fourth quarter was called back after rookie Antonio Cason was called for illegal block in the back.

Oakland quarterback JaMarcus Russell was intercepted twice by linebacker Stephen Cooper and also lost a fumble, leading to 17 points for the Chargers. Russell didn't get right away after throwing his second interception and was later taken to the locker room on a cart with an injured right ankle.

Andrew Walter replaced Russell at the start of the third quarter. Walter was intercepted by Matt Wilhelm late in the fourth quarter.

The Raiders (3-10) reached double digit losses for the sixth straight game. They are 22-71 since being routed by Oakland coach Jon Gruden in the Super Bowl in San Diego on Jan. 26, 2003.

Tomlinson's TD midway through the first quarter was the 137th of his brilliant eight-year career, moving him into sole possession of fifth place on the career list. He had been tied with Marshall Faulk, who was at the game working for the NFL Network.

Three plays into Oakland's first possession, Russell fumbled as he was being sacked by outside linebacker Shaun Phillips, and inside linebacker Jyles Tucker recovered at the 12-yard line. Tomlinson carried three straight yards and was untouched off left tackle for a 10-lead.

Rivers threw an 8-yard TD pass to Sproles early in the

second quarter, capping a 15-play, 96-yard drive that took 8 minutes, 29 seconds. Tomlinson and Sproles carried five times each and Rivers had three carries on the drive.

San Diego got the ball back on Cooper's first pickoff. Jackson got behind two defenses and hauled in Rivers' scoring pass down the right sideline to make it 24-0.

Russell was hit by Phillips while throwing late in the second quarter and the ball went straight to Cooper. He lateral to Antonio Cromarte for a 14-yard gain. Russell was hurt on that play.

San Diego's Nate Kaeding kicked field goals of 20 and 39 yards.

After Kaeding's second field goal, Oakland's Justin Miller returned the kickoff 92 yards for a touchdown.

Rivers was 10-of-22 for 214 yards. Jackson had five catches for a career-high 148 yards.



San Diego Chargers' Darren Sproles flips the ball in the end zone on an 18-yard touchdown reception against the Oakland Raiders in the fourth quarter Thursday in San Diego. Chargers won 34-7.

BASKETBALL

Table with columns for NBA, A1 Teams, and various teams like Portland, Sacramento, and others. Includes scores and game times.

BETTING

Table with columns for Sports, Odds, and various sports like Football, Basketball, and others. Includes odds and game times.

SCOREBOARD

Scoreboard table with columns for Game, Score, and various sports like Football, Basketball, and others. Includes scores and game times.

GAME PLAN

Game Plan section with columns for LOCAL, TV SCHEDULE, and HOKEY. Includes details about various games and events.

FOOTBALL

Table with columns for NFL, A1 Teams, and various teams like Dallas, Houston, and others. Includes scores and game times.

FOOTBALL

Table with columns for NFL, A1 Teams, and various teams like Dallas, Houston, and others. Includes scores and game times.

FOOTBALL

Table with columns for NFL, A1 Teams, and various teams like Dallas, Houston, and others. Includes scores and game times.

FOOTBALL

Table with columns for NFL, A1 Teams, and various teams like Dallas, Houston, and others. Includes scores and game times.

Board approves raise, extension for BSU athletic director

BOISE — The state Board of Education has approved a 3 percent pay raise and a five-year contract extension for Boise State University athletic director Gene Blyemler.

The board voted in favor of the contract on Thursday, but only after prohibiting the university from using state appropriated money to pay for Blyemler's yearly salary increases.

During the past three years, the contract has included a total of \$46,000 in pay raises and about \$18,000 came from state money appropriated to the school.

Board members voted to amend the contract and require the university to pay for the yearly raises with athletic department money.

Blyemler's yearly salary will jump to more than \$266,000 during in fiscal year 2009, an increase of 3 percent from his 2008 salary of \$256,000.

Sports Shorts

Note: Send Magic Valley briefs to sports@magvalley.com

famed No. 43 Dodge with GEM to become a four-attempt. They requested an anonymity because the negotiations are ongoing.

SL.com first reported that Petty Enterprises' top operation will not return in 2009. But David Zucker, CEO of Petty Enterprises, said the report was "not accurate."

He would not discuss a potential merger. "We're not going to comment on rumors and speculation," he said.

GOLF

Wie shoots 65 to share early lead at LPGA Q-school

LAYTONA BEACH, Fla. — Changing her tactics off the tee on the more forgiving Champions course at LPGA International, 19-year-old Michelle Wie from Hawaii hit driver on all but two holes and ran off four straight birdies late in her round for a 7-under 65 that put her in a tie for the lead with Shih-Che Yang after the second of five rounds at Q-school.

Joined Wie at 10-under 134. The top 20 players after the 90-hole tournament Sunday earn their LPGA Tour cards for next season. Through two rounds, Wie was eight shots clear of the cutoff.

Stacy Lewis shot a 66 for the best score this week on the Legends course and one shot behind at 9-under 135.

MLB

Feds drop 4 counts against Bonds

SAN FRANCISCO — Federal prosecutors dropped four counts of lying to a grand jury against Barry Bonds, leaving him to face trial next year on 10 counts of making false statements plus an additional obstruction of justice charge. Bonds faces the same potential sentence again — probation to roughly two years in prison — if convicted. His trial is scheduled to begin March 2.

Thursday's indictment came in response to U.S. District Judge Susan Illston's decision last week ordering prosecutors to again rewrite the technically faulty indictment.

MAGIC VALLEY

CSI journey branch today

TWIN FALLS — The College of Southern

Idaho's Boise Office Equipment Branch will be at 10:30 a.m., Friday at the Turf Club. The cost is \$32. If you plan to attend, please call Ginger at 733-6486.

Kimberly to hold spaghetti feed

KIMBERLY — The Kimberly wrestling team is hosting its second annual spaghetti dinner fundraiser from 4:30-7:30 p.m., Wednesday, Dec. 17 at the Kimberly High School commons area. The cost is \$7 per person, \$4 for children age 7 and under, and includes spaghetti, salad, bread, cake and drink.

The dinner coincides with the Bulldogs' first conference match of the season against Filer and Buhl, held at 6 p.m.

Information: Theresa Albright at 539-6186.

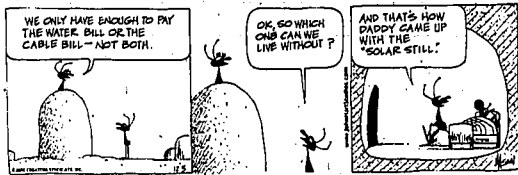
Local VB team seeking members

TWIN FALLS — The Southern Idaho Volleyball Club is seeking girls 18-18 years of age for its 18 and under traveling volleyball team. The club competes within the Intermountain Volleyball Association and will begin tournament play in mid February of 2009.

Information: Jay Bride at 420-2524 or jbride@magvalley.com

— Wire and staff reports

B.C.



Baby Blues



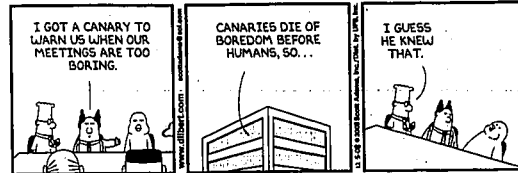
Beetle Bailey



Blonde



Dilbert



The Elderberries



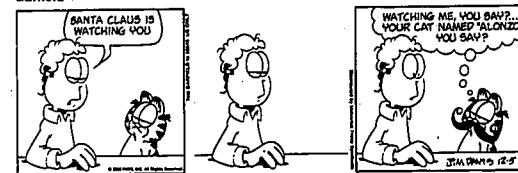
For Better or For Worse



Frank and Ernest



Garfield



Hagar the Horrible



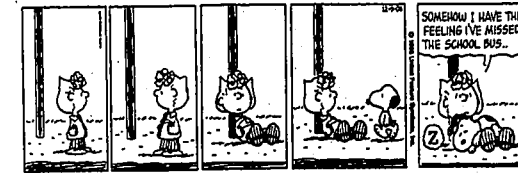
Hi and Lois



Luann



Classic Peanuts



Pearls Before Swine



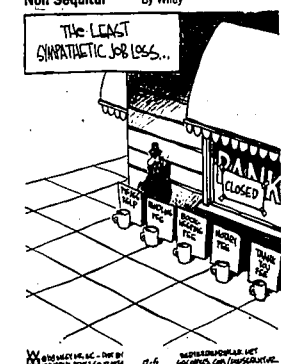
Pickles



Rose is Rose



Non Sequitur



Dennis the Menace



The Wizard of Id



Zits

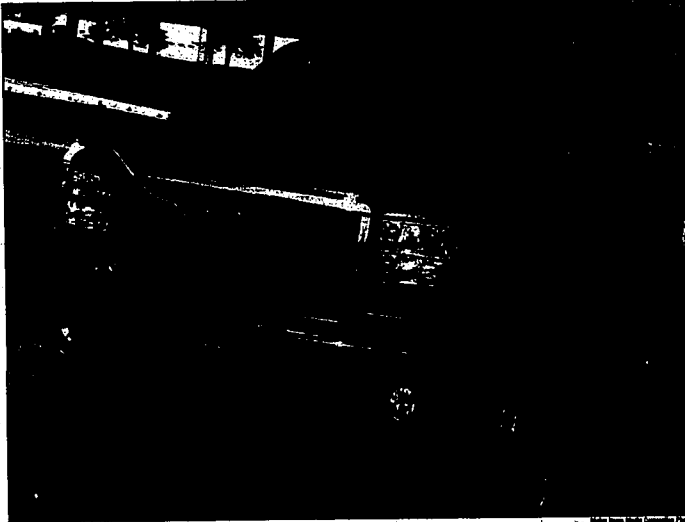


2009 GMC SIERRA HD PICKUP TRUCK BUILT TO WORK!

ReadWorship!
By Ken Chester, Jr.
Motor News Media Corporation

Boasting a maximum trailer capacity of 13,000 lbs., the GMC Sierra heavy duty pickup trucks are considered the most capable, comfortable and smoothest riding Sierra HD pickups ever built. Offered in 2500HD (3/4 ton) and 3500HD (one ton) body configurations, consumers have a choice of three cab styles (regular, extended and crew cab) and two cargo box configurations: standard (6.6 ft.) and long (8.0 ft.). Sierra 3500HD models are also available with the dually dual wheel configuration with a long (8.0 ft.) cargo box.

Upgrades and enhancements for 2009 include: new Carbon Black Metallic and Midnight Blue exterior colors; OnStar 8.0 w/Turn-by-Turn navigation and Destination Download; Bluetooth hands free phone connectivity; XM Satellite radio w/NavTraffic feature; rear view camera system (extended crew cab); and standard vehicle stability enhancement system for 2500HD extended crew cab with standard cargo box. Available in two- or four-wheel drive configurations and WT, SLE and SLT trim levels, power for the GMC Sierra HD is generated by a choice of two engines: a Vortec 6.0L V8 or a 6.6L



Duramax V8 turbo-diesel. The gasoline V8 transfers torque to the pavement through a Hydra-Matic 6L80 six-speed automatic transmission with manual range selection and automatic grade braking, while the turbo diesel powerplant relies on a robust Allison 1000 six-speed automatic gearbox to get the job done.

On the road, the Sierra HD equipped with the Duramax turbo-diesel delivers a strong and responsive performance. Although the ride is firm, it is not punishing when empty. Handling and control are safe and predictable across the speed range. The Sierra HD is also impressively quiet and without the smoke and noise of the previous generation diesel engines.

The Sierra HD models also provide a comprehensive level of safety features, many offered for the first time in the HD pickup segment. GM's 360-degree perimeter of safety protection includes industry-exclusive rear impact sensors and front-safety belt pretensions that are triggered in front and rear impacts. Inside the modern passenger cabin, displays, controls and switchgear rival

the quality and arrangement of a refined luxury sedan. The outward view is excellent and unencumbered. The Sierra HD offers a long list of standard features, including the 170-degree-opening rear access door for extended cab models (164-degrees on dually models) with fully retractable rear power windows and theater-style rear folding seats.

2009 GMC Sierra HD Pickup Truck By The Numbers

- PRICE**
The base Manufacturer's Suggested Retail Price (MSRP) for the 2009 GMC Sierra HD pickup truck starts from \$24,520 for the Sierra 2500 HD regular cab Work Truck 2WD to \$42,046 for the 3500 HD crew cab SLT 4WD DRW. Destination charges add \$225.
- ENGINE**
6.0L V8 - 360 hp at 5,400 rpm and 380 lbs-ft of torque at 4,200 rpm; Duramax 6.6L V8 turbo-diesel - 365 hp at 3,200 rpm and 660 lbs-ft of torque at 1,600 rpm.
- TRANSMISSION**
Six-speed automatic.
- PAYLOAD CAPACITY**
5,300 lbs.
- TOWING CAPACITY**
13,000 lbs.
- SAFETY FEATURES**
Dual front airbags, four-wheel disc brakes with Hydro-boost and anti-lock, battery run-down protection, automatic headlamps, daytime running lights, tire pressure monitoring, front recovery hooks, OnStar communications system, PASS-LOCK theft deterrent system and full-size spare tire. SLE adds fog lights and remote keyless entry. SLT adds universal garage door opener, heated sideview mirrors w/inglass turn signals and heated windshield wiper fluid. Optional safety features include: heavy-duty locking rear differential, remote vehicle starter system and navigation system.
- WARRANTY**
Basic: 3-year/36,000 mile, bumper-to-bumper. Powertrain: 5-year/100,000 mile. Corrosion: 6-year/100,000 mile. Roadside assistance: 24-hour, 24/7.

INCREASED FACTORY INCENTIVES + OUR DISCOUNTS MAKE NOW THE BEST TIME TO BUY EVER!

<p>NEW 2008 TUNDRA 4X4</p> <p>22 to choose from</p> <p>\$7,000* OFF MSRP on all New 2008 Tundras in Stock.</p> <p>OR Take \$5,000 OFF MSRP AND Get 1.9% APR for 36 mos. 2.9% APR for 48 mos. 3.9% APR for 60 mos.</p> <p>OR Take \$3,000 OFF MSRP AND Get 0% APR for 60 mos.</p>	<p>NEW 2009 YARIS LIFTBACK 5-DOOR</p> <p>Buy for \$14,980*</p> <p>OR Take 0.0% APR for 36 mos. 1.9% APR for 48 mos. 2.9% APR for 60 mos.</p> <p>35mpg Hwy</p>	<p>NEW 2009 COROLLA LE</p> <p>Buy for \$16,980*</p> <p>OR Take 0.0% APR for 36 mos. 1.9% APR for 48 mos. 2.9% APR for 60 mos.</p> <p>35mpg Hwy</p>	<p>NEW 2009 CAMRY LE</p> <p>Buy for \$19,980*</p> <p>OR Take 0.0% APR for 36 mos. 1.9% APR for 48 mos. 2.9% APR for 60 mos.</p> <p>31mpg Hwy</p>
<p>NEW 2009 SIENNA CE VAN</p> <p>Buy for \$23,980*</p> <p>OR Take 0.0% APR for 36 mos. 1.9% APR for 48 mos. 2.9% APR for 60 mos.</p>	<p>NEW 2008 FJ CRUISER</p> <p>Buy for \$5,000*</p> <p>OR Take \$2,000 OFF MSRP AND Get 0.0% APR for 36 mos. 0.9% APR for 48 mos. 1.9% APR for 60 mos.</p>	<p>NEW 2008 HIGHLANDER</p> <p>Buy for \$5,000*</p> <p>OR Take \$3,000 OFF MSRP AND Get 0.0% APR for 36 mos. 1.9% APR for 48 mos. 2.9% APR for 60 mos.</p>	

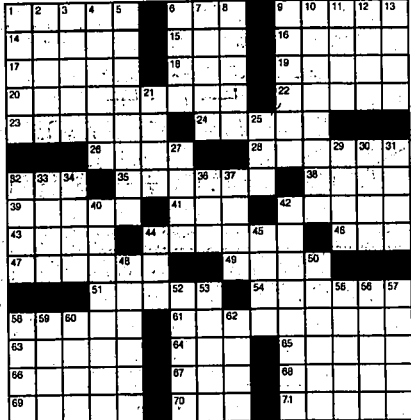
*Picture for illustration purposes only. Special end 12/31/08. Corolla and 12/31/08. Camry and 12/31/08. Yaris and 12/31/08. Tundra and 12/31/08. Sierra and 12/31/08. *Price plus tax, title, and \$124.50 dealer doc fee. **Dealer option at release. †2009 EPA estimate. ‡On approved credit through Toyota Financial Services, Inc. L.R. & B.R.

<p>'09 MERCURY GRAND MARQUIS GS</p> <p>MSRP \$15,980 - \$19,980 (MSRP) - \$19,980 (MSRP)</p> <p>\$5,980</p>	<p>'01 HONDA CIVIC EX 4 DOOR</p> <p>MSRP \$14,980 - \$17,980 (MSRP)</p> <p>\$6,980</p>	<p>'06 NISSAN XTERRA SE 4X4</p> <p>MSRP \$17,480 - \$19,980 (MSRP)</p> <p>\$7,480</p>	<p>'05 FORD FOCUS ZX4 SE 4 DR</p> <p>MSRP \$14,980 - \$17,980 (MSRP)</p> <p>\$8,980</p>	<p>'05 FORD TAUHUS SEL</p> <p>MSRP \$14,980 - \$17,980 (MSRP)</p> <p>\$8,980</p>
<p>'03 CHRYSLER T&C LE VAN</p> <p>MSRP \$13,980 - \$15,980 (MSRP)</p> <p>\$8,980</p>	<p>'04 CHRYSLER PACIFICA</p> <p>MSRP \$14,980 - \$17,980 (MSRP)</p> <p>\$9,980</p>	<p>'01 HONDA ACCORD EX</p> <p>MSRP \$14,980 - \$17,980 (MSRP)</p> <p>\$10,980</p>	<p>'04 JEEP CR CHEROKEE LAREDO 4X4</p> <p>MSRP \$14,980 - \$17,980 (MSRP)</p> <p>\$10,980</p>	<p>'04 PONTIAC BONNEVILLE SLE</p> <p>MSRP \$14,980 - \$17,980 (MSRP)</p> <p>\$13,880</p>
<p>'05 CHRYSLER 300 LTD.</p> <p>MSRP \$14,980 - \$17,980 (MSRP)</p> <p>\$13,980</p>	<p>'05 FORD ESCAPE LTD. 4X4</p> <p>MSRP \$14,980 - \$17,980 (MSRP)</p> <p>\$14,980</p>	<p>'04 GMC ENVY SL 2.0</p> <p>MSRP \$14,980 - \$17,980 (MSRP)</p> <p>\$15,980</p>	<p>'03 TOYOTA RAV4 4WD</p> <p>MSRP \$14,980 - \$17,980 (MSRP)</p> <p>\$15,980</p>	<p>'05 TOYOTA CAMRY LE</p> <p>MSRP \$14,980 - \$17,980 (MSRP)</p> <p>\$16,980</p>
<p>'03 TOYOTA TUNDRA SLE 4X4</p> <p>MSRP \$14,980 - \$17,980 (MSRP)</p> <p>\$16,980</p>	<p>'03 TOYOTA HIGHLANDER 4WD</p> <p>MSRP \$14,980 - \$17,980 (MSRP)</p> <p>\$17,980</p>	<p>'04 NISSAN MURANO SE 4WD</p> <p>MSRP \$14,980 - \$17,980 (MSRP)</p> <p>\$18,980</p>	<p>'05 SUBARU OUTBACK LL BEAN</p> <p>MSRP \$14,980 - \$17,980 (MSRP)</p> <p>\$18,980</p>	<p>'07 CHEVY COLORADO DBL CAB 4X6</p> <p>MSRP \$14,980 - \$17,980 (MSRP)</p> <p>\$18,980</p>
<p>'06 TOYOTA TACOMA SLE STRACAB 4X4</p> <p>MSRP \$14,980 - \$17,980 (MSRP)</p> <p>\$18,980</p>	<p>'01 TOYOTA LANDCRUISER 4X4</p> <p>MSRP \$14,980 - \$17,980 (MSRP)</p> <p>\$19,980</p>	<p>'04 FORD F-150 SUPERCREW ZX4 4X4</p> <p>MSRP \$14,980 - \$17,980 (MSRP)</p> <p>\$19,980</p>	<p>'03 CHEVY SILVERADO 4X4</p> <p>MSRP \$14,980 - \$17,980 (MSRP)</p> <p>\$19,980</p>	<p>'05 DODGE RAM QUAD CAB DIESEL 4X4</p> <p>MSRP \$14,980 - \$17,980 (MSRP)</p> <p>\$21,980</p>
<p>'06 CHEVY COBALT 2500 HD 4X4 LT</p> <p>MSRP \$14,980 - \$17,980 (MSRP)</p> <p>\$22,980</p>	<p>'07 TOYOTA PIRUS</p> <p>MSRP \$14,980 - \$17,980 (MSRP)</p> <p>\$21,980</p>	<p>'04 TOYOTA SIENNA SLE 4WD</p> <p>MSRP \$14,980 - \$17,980 (MSRP)</p> <p>\$23,980</p>	<p>'07 CHEVY AVALANCHE LS 4X4</p> <p>MSRP \$14,980 - \$17,980 (MSRP)</p> <p>\$24,980</p>	<p>'04 TACOMA DOUBLE CAB 4X4</p> <p>MSRP \$14,980 - \$17,980 (MSRP)</p> <p>\$24,980</p>

WILLS TOYOTA

Real discounts from real prices. 236 SHOSHONE STREET WEST • TWIN FALLS • 733-2891 • 1-800-621-5247 • WWW.WILLSTOYOTA.COM

- ACROSS
- 1 Checked out
 - 6 Shake up
 - 9 Numbers game
 - 14 At the right moment
 - 15 Puceli starter?
 - 16 Yucca word
 - 17 Christian's frocks
 - 18 Carried out
 - 19 Underdog's victory
 - 20 Living security choice
 - 22 Yeas and nays
 - 23 Lampoon
 - 24 Draws closer
 - 26 Willingly, poetically
 - 28 Took by force
 - 32 Clear tables
 - 35 Stain
 - 38 Big slink
 - 39 Stage whisper
 - 41 Final trio
 - 42 Pulls apart
 - 43 Oil or Horne
 - 44 de Bergerac
 - 46 Scope out
 - 47 Put into circulation
 - 49 Campus mil. org.
 - 51 Neon and xenon
 - 54 Bow of greeting
 - 55 Hikers' routes
 - 61 Squash or bean
 - 63 Drop off
 - 64 The mind's I?
 - 65 Circle around
 - 66 Fend off
 - 67 Be penitent
 - 68 Movie
 - 69 Superman
 - 70 Has the lead
 - 70 Thumbs up
 - 71 Eyelid woes
- DOWN
- 1 Musical finales
 - 2 Baker or O'Day
 - 3 Glenn of "Backdraft"
 - 4 Continental travel pass



Thursday's Puzzle Solved

SPACE UMP S OLLA
 LAURA RIOT REAR
 OWNER ANNE BARD
 ENTANGLED LINGO
 TEES POTTER
 STRODE MOUSE
 POOR SINCERELY
 ETA SETTERS DOE
 DEMOCRATS BEAN
 ROARS TRENDS
 RADIUS SUED
 ERROR TENTATIVE
 TOILT TARO DICED
 ISLE STIR EMEND
 TELLS PACE REDDY

(c)2008 Tribune Media Services, Inc. All rights reserved.

- 5 Portray in words
- 6 Actress Ashley
- 7 Negatively charged atom
- 8 Corrugation
- 9 "Mona Lisa" museum
- 10 Antithesis
- 11 Try out
- 12 Apple or pear, e.g.
- 13 Cereal grains
- 21 Nautical stabilizer
- 25 Volcanic fallout
- 27 Twirling
- 28 Confront
- 29 Nightly area?
- 30 Countercurious
- 31 Drug measure
- 32 Island east of Java
- 33 Applications
- 34 Deadly seven
- 36 Tuesday god
- 37 Old autocrat
- 40 Female hair
- 42 Antenna adjusters

- 44 Replacements for LPs
- 45 Part of a muzzle
- 48 Art stands
- 50 Red Bordeaux wine
- 52 so often
- 53 Artful transition
- 55 Westminster, for one
- 56 Vibrant
- 57 Dishes (out)
- 58 Golf standards
- 59 Assist illegally
- 60 Spanish appetizers
- 62 Doesn't stay

1009 Vans and Buses

DODGE '90 Grand Caravan, well kept, tons exc. looks nice, wood on gold, low miles, \$1175/offer. 734-6002 or 421-0369

HONDA '00 Odyssey. Was \$3999. Now \$3687. #138050A. 208-380-1349

MIDDLEKAUFF
208-733-7700

Looking for Vans
Wheels Online
Check us out @ www.wheelsonline.com

PLYMOUTH '86 Voyager, 145,000 miles, new tires. Sold as is. \$1500/offer. 208-380-1349

WANTED VAN/BI Sell your vehicle for immediate CASH TODAY! Buying all years, makes and models 1-800-574-1248.

1010 Autos

CADILLAC '05 CTS w/leather package, 20K miles, garaged, excellent condition. \$22000. 208-305-2026

CHEVY '00 Corvette, 6 spd, loaded, leather, in-dash DVD, convertible, \$16,900. 208-304-0069. 28118 Lincoln, Jerome

Smalley Motors
Call 208-733-6776

CHEVY '05 Cobalt, 42K miles, 5 spd, 32 mpg, 4 door, \$7100. Call 208-733-3802

CHEVY '07 Avo, automatic, great fuel economy, only \$11625. Stock#0775152CP. 208-733-3033

CHEVY '07 Cobalt, automatic, air, \$895. 2 to choose from. 208-733-3033

CHEVY '07 Malibu automatic, air, CD, cruise, \$12,999. Stock#07281962P. 208-733-3033

AUDI '01 A8 1.8T Quattro, 5 speed, loaded, 107K miles, \$9,000. 490-1805. See at 517 Eastgate Dr., Twin Falls.

1010 Autos

CHRYSLER '07 PT Cruiser, 80K Powertrain warranty, auto, power W/LM, cruise, 3 to choose from. \$10,999. **Smalley Motors** Call 208-733-6776

NUTHIA
Chrysler - Jeep - Dodge
Call 208-733-6776

FORN '05 Crown Victoria, 33K miles, leather, AC, PW, PL, cruise, \$12,500.

FORN '06 Taurus, AC, automatic, PW, PL, 71K miles, good gas mileage car, only \$8950.

FORN '07 Focus SE, auto, air, PW, PL, AM/FM/CD, 100K miles, certified Honda warranty \$17,777 #2096A. **Tuffy Car Sales**
802 N College Rd, TF 208-737-1200

FORN '07 Focus SE, auto, air, PW, PL, AM/FM/CD, 100K miles, certified Honda warranty \$17,777 #2096A. **Tuffy Car Sales**
802 N College Rd, TF 208-737-1200

1010 Autos

FORD '00 Mustang V8, 59K miles, 5 spd, 27 mpg, 2 door, \$8100. 208-733-9802

FORD '04 Focus, 4 door, 5 spd, cassette, great 1st car, economical, \$6950. 208-304-0069. 28118 Lincoln, Jerome

Smalley Motors
Call 208-733-6776

FORD '07 Mustang, V8, CD, PW, PL, AC, PS, cruise, 25K miles, only \$16,800.

FORD '06 Probe 4 cyl, auto trans, very clean, \$1945. Stock#0855FA. **MIDDLEKAUFF**
208-733-7700

FORD '96 Taurus-Sho Just reduced, forest green, AT, PL, PW, sunroof, 24 mpg, \$2600/offer. See & test drive at CJ's Garage, Idaho & Main in Twin or call. 208-544-7633 eyes

HONDA '00 Accord, 2 door, leather, loaded, sunroof, nice car, only \$8950

OLDS '03 Alero, Was \$9999. Now \$7295. #129015A. **MIDDLEKAUFF**
208-733-7700

OLDSMOBILE '04 Alero, power everything, CD, AT, 78K miles, \$8950. 208-324-0069. 28118 Lincoln, Jerome

HONDA '01 Accord LX, auto, air, PW, PL, AM/FM/CD, rear spoiler, tinted glass, local trade, \$8986. #2100. **Smalley Motors**

Looking for Autos
Wheels Online
Check us out @ www.wheelsonline.com

MERCURY '03 Grand Marquis, 77K miles, local trade, leather, loaded, excellent condition, only \$7950

Assist AUTO BROKERAGE
275 S. Idaho St.
Wendell 208-536-1900

MERCURY '96 Tracer mini little car, 4 doors, good tires, runs great 120K mi. 404-8411

NISSAN '05 Maxima automatic, spoiler, wheels, CD. \$15,999. Stock #5C872600. **NUTHIA**
Chrysler - Jeep - Dodge
Call 208-733-6776

OLDS '03 Alero, power everything, CD, AT, 78K miles, \$8950. 208-324-0069. 28118 Lincoln, Jerome

PONTIAC '01 Firebird, V6, 5 spd, PW, PL, rear spoiler, \$7950. 208-324-0069. 28118 Lincoln, Jerome

1010 Autos

VW '96 Beetle 5 spd, power, air, rear spoiler, sunroof, \$4900. 208-324-0069. 28118 Lincoln, Jerome

Smalley Motors

WANTED CAR/BI Sell your vehicle for immediate CASH TODAY! Buying all years, makes and models 1-800-574-1248.

WARNING
When purchasing a vehicle, make sure that the title is in the name of the seller. Under Idaho motor vehicle code a vehicle cannot be sold unless the title is in the name of the seller. (except for Idaho licensed dealer). The seller shall furnish the purchaser a signed bill of sale showing the following: Full identification of the vehicle, vehicle identification number, amount paid and name(s) and address of the new purchaser. The bill of sale must be signed, dated and show actual mileage at the time of sale. If you have any questions, please contact your local assistant's office.

WHO can help YOU sell your car? Classifieds
Call! 733-0931 ext. 2 www.classifieds.com

1011 Import and Sports Cars

WANTED VEHICLE/BI Sell your vehicle for immediate CASH TODAY! Buying all years, makes and models 1-800-574-1248.

1012 Stock Cars
FORD Pony Stock race car. New motor, ready to race. \$3000/offer or reasonable trade. 208-781-2182

Car Wash
Affordable Cars & Trucks

- 1999 VW PASSAT WAGON #557A \$5,102
- 2001 OLDSMOBILE ALERO GL #2943A \$7,105
- 2005 CHEVROLET CLASSIC #2811A \$9,503
- 2002 MAZDA TRIBUTE 4X4 #2586A \$11,804
- 2003 SUBARU BAJA #041083A \$12,105
- 2008 CHEVROLET AVEO #2585A \$13,401
- 2008 CHEVY UPLANDER VAN #15,312
- 2008 FORD F-350 CREW 4X4 #101949A \$24,210

BUY WITH CONFIDENCE
Your Satisfaction is Guaranteed
Limited Powertrain warranty
3 Month/3000 Mile
5 Day/250 Mile
Money Back Guarantee
Dealer Warranty Included
See dealer for details.
Se Habla Español.

CARFAX

New to You!

2008 HYUNDAI ELANTRA #24851A
SAVE \$4,170 OVER NEW!

2008 HYUNDAI SONATA #281008
SAVE \$5,750 OVER NEW!

2008 GMC ACADIA #285408
SAVE \$6,980 OVER NEW!

2008 PONTIAC G8 #286408
SAVE \$7,000 OVER NEW!

2008 BUICK LUCERNE #282308
SAVE \$6,000 OVER NEW!

2008 CHEVY MALIBU LTZ #268808
SAVE \$9,000 OVER NEW!

2008 CADILLAC ESCALADE #268808
SAVE \$10,400 OVER NEW!

2008 CADILLAC DTS #283808
SAVE \$11,550 OVER NEW!

Jerome
Exit 168
324-3900
Twin Falls
1534 N. Blue Lakes
735-3900

Expires 12/11/08. Price plus tax. See a dealer for best deal. ©2008. All rights reserved by EA.

Legal

PUBLIC NOTICE
Actions planned and taken by your government are of your right to know...

IMPORTANT
Please address any questions concerning this notice to: LEGAL ADVISING

The Times-News
PO Box 846
Twin Falls, Idaho
83303-0846

Deadlines for legal notices prior to publication, noon on Wednesday for Sunday, noon on Thursday for Monday, noon on Friday for Tuesday and Wednesday, noon on Monday for Thursday and Friday, noon on Tuesday for Saturday. Holiday deadlines may vary...

IN THE DISTRICT COURT OF THE FIFTH JUDICIAL DISTRICT OF THE STATE OF IDAHO, IN AND FOR THE COUNTY OF TWIN FALLS MAGISTRATE DIVISION

Case No. CV 2008-5232
NOTICE TO CREDITORS
In and for the State of: DAVID JOHN LONG, Decedent.

Notice is hereby given that RANDALL A. LONG has been appointed Personal Representative of the above-named estate...

PUBLISH: December 5, 12 and 19, 2008

Legal

TWIN FALLS COUNTY
NOTICE OF PUBLIC SALE
TS No. 08-0107375 Title Order No. 08004658BDGNO Parcel No. RP-141840010004A

Clear Lake Storage will sell entire contents of one storage unit, contents belonging to Angi Deshaize...

PUBLISH: December 5 and 12, 2008

IN THE DISTRICT COURT OF THE FIFTH JUDICIAL DISTRICT OF THE STATE OF IDAHO, IN AND FOR THE COUNTY OF GASSIA MAGISTRATE DIVISION

Case No. CV-08-116
NOTICE TO CREDITORS
In and for the State of: HELEN HALL RICH, also known as HELEN H. RICH, Decedent.

PUBLISH: November 28, Dec 5 and 12, 2008

Legal

NOTICE OF SALE
Clear Lake Storage will sell entire contents of one storage unit, contents belonging to Angi Deshaize...

PUBLISH: December 5 and 12, 2008

IN THE DISTRICT COURT OF THE FIFTH JUDICIAL DISTRICT OF THE STATE OF IDAHO, IN AND FOR THE COUNTY OF GASSIA MAGISTRATE DIVISION

Case No. CV-08-116
NOTICE TO CREDITORS
In and for the State of: HELEN HALL RICH, also known as HELEN H. RICH, Decedent.

PUBLISH: November 28, Dec 5 and 12, 2008

CASSIA COUNTY
NOTICE OF TRUSTEE'S SALE

Idaho Code 45-1508 (2006) Title Order No. 08004658BDGNO Parcel No. RP-141840010004A

PUBLISH: November 28, Dec 5 and 12, 2008

Legal

BURLEY IRRIGATION DISTRICT
246 E 100 S
BURLEY, IDAHO 83318
NOTICE OF FUNDING ISSUE OF TAX DEED

TO: Damasio Rangul Pardee In Interest of Record: B15 W 500 S P O Box 887 Hayden ID 83336

Record Owner or Owners
YOU ARE HEREBY NOTIFIED that under the provisions of the laws of the State of Idaho...

YOU ARE FURTHER NOTIFIED that if said delinquent assessment, together with penalties, interest and costs are not paid to the Irrigation District...

Exhibit "A" Attached
Street Address: 529 W 40 S Burley ID 83318

YOU ARE FURTHER NOTIFIED that if said delinquent assessment, together with penalties, interest and costs are not paid to the Irrigation District...

YOU ARE FURTHER NOTIFIED that if said delinquent assessment, together with penalties, interest and costs are not paid to the Irrigation District...

YOU ARE FURTHER NOTIFIED that if said delinquent assessment, together with penalties, interest and costs are not paid to the Irrigation District...

YOU ARE FURTHER NOTIFIED that if said delinquent assessment, together with penalties, interest and costs are not paid to the Irrigation District...

YOU ARE FURTHER NOTIFIED that if said delinquent assessment, together with penalties, interest and costs are not paid to the Irrigation District...

YOU ARE FURTHER NOTIFIED that if said delinquent assessment, together with penalties, interest and costs are not paid to the Irrigation District...

YOU ARE FURTHER NOTIFIED that if said delinquent assessment, together with penalties, interest and costs are not paid to the Irrigation District...

YOU ARE FURTHER NOTIFIED that if said delinquent assessment, together with penalties, interest and costs are not paid to the Irrigation District...

YOU ARE FURTHER NOTIFIED that if said delinquent assessment, together with penalties, interest and costs are not paid to the Irrigation District...

YOU ARE FURTHER NOTIFIED that if said delinquent assessment, together with penalties, interest and costs are not paid to the Irrigation District...

YOU ARE FURTHER NOTIFIED that if said delinquent assessment, together with penalties, interest and costs are not paid to the Irrigation District...

YOU ARE FURTHER NOTIFIED that if said delinquent assessment, together with penalties, interest and costs are not paid to the Irrigation District...

YOU ARE FURTHER NOTIFIED that if said delinquent assessment, together with penalties, interest and costs are not paid to the Irrigation District...

YOU ARE FURTHER NOTIFIED that if said delinquent assessment, together with penalties, interest and costs are not paid to the Irrigation District...

YOU ARE FURTHER NOTIFIED that if said delinquent assessment, together with penalties, interest and costs are not paid to the Irrigation District...

YOU ARE FURTHER NOTIFIED that if said delinquent assessment, together with penalties, interest and costs are not paid to the Irrigation District...

YOU ARE FURTHER NOTIFIED that if said delinquent assessment, together with penalties, interest and costs are not paid to the Irrigation District...

YOU ARE FURTHER NOTIFIED that if said delinquent assessment, together with penalties, interest and costs are not paid to the Irrigation District...

YOU ARE FURTHER NOTIFIED that if said delinquent assessment, together with penalties, interest and costs are not paid to the Irrigation District...

YOU ARE FURTHER NOTIFIED that if said delinquent assessment, together with penalties, interest and costs are not paid to the Irrigation District...

YOU ARE FURTHER NOTIFIED that if said delinquent assessment, together with penalties, interest and costs are not paid to the Irrigation District...

YOU ARE FURTHER NOTIFIED that if said delinquent assessment, together with penalties, interest and costs are not paid to the Irrigation District...

YOU ARE FURTHER NOTIFIED that if said delinquent assessment, together with penalties, interest and costs are not paid to the Irrigation District...