

Weather Forecast  
Fair tonight and Wednesday  
High tonight 65; low 27. Low  
Friday 65; high 71. Low  
Saturday 65; high 71. Low  
Sunday 65; high 71. Low

# Idaho Times

A Regional Newspaper Serving  
TWIN FALLS, IDAHO, TUESDAY, APRIL 9, 1935  
Six Irrigated Counties in Idaho

TODAY'S  
NEWS  
TODAY

VOL. XVII, NO. 306-5 CENTS.

Published by the Idaho Times Co., 215 N. Main St., Twin Falls, Idaho.  
Subscription Price: \$2.00 per Annum in Advance.  
Single Copies: 5 Cents.

Member of Audit Bureau of Circulation  
OFFICIAL COUNTY NEWSPAPER

## CITIZEN'S PLEA FOR ARMY AIR-BASE HANDLED BY DERN

Advantages of Three Locations  
Outlined in Brief Form  
By C. C. C.

## STRESSES LACK OF FOG Start Compelling Efforts For Airport

By RALPH W. OLIMSTAD  
TWIN FALLS, April 8 (Special)  
—Had the war department  
a supply of air bases to dis-  
tribute in Idaho, it developed to-  
day, Pocatello, Twin Falls, Ida-  
ho, and Boise, Idaho, are the best  
places to locate an airport.  
The first formal application in  
the history, however, comes from  
Twin Falls, Idaho. The applica-  
tion is being set forth in the  
qualities of airport facilities.  
The vicinity of the "magic city"  
is about 15 miles from the  
worked out maps, had been  
transmitted today to Secretary  
of War Dern by Sen. James H.  
Pope, D., Idaho.

Advantages of three sites  
this city for the proposed federal  
air base are pointed out in a brief  
submitted by the local Twin Falls  
Chamber of Commerce committee  
which was being given considera-  
tion by Washington authorities.

## SWISS PROTEST MAZI KIDNAPING

It is pointed out in the report  
that this city is at the crossroads  
of two international routes.  
No. 23 and the Oregon trail; that  
the city is centrally located in  
Idaho has railway connections  
south as well as to the east and  
west on the main line.  
One proposed airport site east of  
Twin Falls in the Macomber flats  
and comprises 2000 acres of  
additional 5000 acres of suitable  
land being available in proximity  
to the city.  
(Continued on Page 2, Column 3)

## COAL MEN DRAFT FIGHT ON POWER

Threaten Campaign to Oust  
TVA and Other Federal  
Projects

WASHINGTON, April 2 (UP)—  
The bituminous lignite seam  
found in the region of the  
"through every legislative  
powers" against government hydro-  
power development.  
The Tennessee Valley Authority,  
the National Coal Association,  
testified in opposition to  
the TVA project in the Senate  
before the house military affairs  
committee.  
The "coal men" have been  
proud to be able to slow  
down the project.

## COURT VICTORY

Battle referred to the Grub  
court in the Grub case, which  
from the association's court  
fight, and which temporarily had  
prevented the TVA from  
surplus electricity.  
The court decision and  
special pleading in court  
to the TVA.  
"We can't believe that congress  
is going to give such a large  
sum of money to the TVA  
to injure and restrain our  
industry."

## INCOME LEVIES RAISED IN ALL TAX BRACKETS

BOISE, April 2 (UP)—The bill  
amending the income tax  
created in all brackets, signed last  
night by C. C. Ben Ross, pro-  
tective of the income tax.  
The tax, affecting 1935 incomes,  
becomes payable March 15, 1935.  
The tax rates are:  
First \$1,000, tax 1 1/2 per cent.  
Second \$1,000, 3 per cent. up to  
Third \$1,000, 4 per cent. up to  
Fourth \$1,000, 5 per cent. up to  
Fifth \$1,000, 6 per cent. up to  
Sixth \$1,000, 7 per cent. up to  
Seventh \$1,000, 8 per cent. up to  
Eighth \$1,000, 9 per cent. up to  
Ninth \$1,000, 10 per cent. up to  
Tenth \$1,000, 11 per cent. up to  
Eleventh \$1,000, 12 per cent. up to  
Twelfth \$1,000, 13 per cent. up to  
Thirteenth \$1,000, 14 per cent. up to  
Fourteenth \$1,000, 15 per cent. up to  
Fifteenth \$1,000, 16 per cent. up to  
Sixteenth \$1,000, 17 per cent. up to  
Seventeenth \$1,000, 18 per cent. up to  
Eighteenth \$1,000, 19 per cent. up to  
Nineteenth \$1,000, 20 per cent. up to  
Twentieth \$1,000, 21 per cent. up to  
Twenty-first \$1,000, 22 per cent. up to  
Twenty-second \$1,000, 23 per cent. up to  
Twenty-third \$1,000, 24 per cent. up to  
Twenty-fourth \$1,000, 25 per cent. up to  
Twenty-fifth \$1,000, 26 per cent. up to  
Twenty-sixth \$1,000, 27 per cent. up to  
Twenty-seventh \$1,000, 28 per cent. up to  
Twenty-eighth \$1,000, 29 per cent. up to  
Twenty-ninth \$1,000, 30 per cent. up to  
Thirtieth \$1,000, 31 per cent. up to  
Thirty-first \$1,000, 32 per cent. up to  
Thirty-second \$1,000, 33 per cent. up to  
Thirty-third \$1,000, 34 per cent. up to  
Thirty-fourth \$1,000, 35 per cent. up to  
Thirty-fifth \$1,000, 36 per cent. up to  
Thirty-sixth \$1,000, 37 per cent. up to  
Thirty-seventh \$1,000, 38 per cent. up to  
Thirty-eighth \$1,000, 39 per cent. up to  
Thirty-ninth \$1,000, 40 per cent. up to  
Fortieth \$1,000, 41 per cent. up to  
Forty-first \$1,000, 42 per cent. up to  
Forty-second \$1,000, 43 per cent. up to  
Forty-third \$1,000, 44 per cent. up to  
Forty-fourth \$1,000, 45 per cent. up to  
Forty-fifth \$1,000, 46 per cent. up to  
Forty-sixth \$1,000, 47 per cent. up to  
Forty-seventh \$1,000, 48 per cent. up to  
Forty-eighth \$1,000, 49 per cent. up to  
Forty-ninth \$1,000, 50 per cent. up to  
Fiftieth \$1,000, 51 per cent. up to  
Fifty-first \$1,000, 52 per cent. up to  
Fifty-second \$1,000, 53 per cent. up to  
Fifty-third \$1,000, 54 per cent. up to  
Fifty-fourth \$1,000, 55 per cent. up to  
Fifty-fifth \$1,000, 56 per cent. up to  
Fifty-sixth \$1,000, 57 per cent. up to  
Fifty-seventh \$1,000, 58 per cent. up to  
Fifty-eighth \$1,000, 59 per cent. up to  
Fifty-ninth \$1,000, 60 per cent. up to  
Sixtieth \$1,000, 61 per cent. up to  
Sixty-first \$1,000, 62 per cent. up to  
Sixty-second \$1,000, 63 per cent. up to  
Sixty-third \$1,000, 64 per cent. up to  
Sixty-fourth \$1,000, 65 per cent. up to  
Sixty-fifth \$1,000, 66 per cent. up to  
Sixty-sixth \$1,000, 67 per cent. up to  
Sixty-seventh \$1,000, 68 per cent. up to  
Sixty-eighth \$1,000, 69 per cent. up to  
Sixty-ninth \$1,000, 70 per cent. up to  
Seventieth \$1,000, 71 per cent. up to  
Seventy-first \$1,000, 72 per cent. up to  
Seventy-second \$1,000, 73 per cent. up to  
Seventy-third \$1,000, 74 per cent. up to  
Seventy-fourth \$1,000, 75 per cent. up to  
Seventy-fifth \$1,000, 76 per cent. up to  
Seventy-sixth \$1,000, 77 per cent. up to  
Seventy-seventh \$1,000, 78 per cent. up to  
Seventy-eighth \$1,000, 79 per cent. up to  
Seventy-ninth \$1,000, 80 per cent. up to  
Eightieth \$1,000, 81 per cent. up to  
Eighty-first \$1,000, 82 per cent. up to  
Eighty-second \$1,000, 83 per cent. up to  
Eighty-third \$1,000, 84 per cent. up to  
Eighty-fourth \$1,000, 85 per cent. up to  
Eighty-fifth \$1,000, 86 per cent. up to  
Eighty-sixth \$1,000, 87 per cent. up to  
Eighty-seventh \$1,000, 88 per cent. up to  
Eighty-eighth \$1,000, 89 per cent. up to  
Eighty-ninth \$1,000, 90 per cent. up to  
Ninetieth \$1,000, 91 per cent. up to  
Ninety-first \$1,000, 92 per cent. up to  
Ninety-second \$1,000, 93 per cent. up to  
Ninety-third \$1,000, 94 per cent. up to  
Ninety-fourth \$1,000, 95 per cent. up to  
Ninety-fifth \$1,000, 96 per cent. up to  
Ninety-sixth \$1,000, 97 per cent. up to  
Ninety-seventh \$1,000, 98 per cent. up to  
Ninety-eighth \$1,000, 99 per cent. up to  
Ninety-ninth \$1,000, 100 per cent. up to  
One hundred \$1,000, 101 per cent. up to  
One hundred and one \$1,000, 102 per cent. up to  
One hundred and two \$1,000, 103 per cent. up to  
One hundred and three \$1,000, 104 per cent. up to  
One hundred and four \$1,000, 105 per cent. up to  
One hundred and five \$1,000, 106 per cent. up to  
One hundred and six \$1,000, 107 per cent. up to  
One hundred and seven \$1,000, 108 per cent. up to  
One hundred and eight \$1,000, 109 per cent. up to  
One hundred and nine \$1,000, 110 per cent. up to  
One hundred and ten \$1,000, 111 per cent. up to  
One hundred and eleven \$1,000, 112 per cent. up to  
One hundred and twelve \$1,000, 113 per cent. up to  
One hundred and thirteen \$1,000, 114 per cent. up to  
One hundred and fourteen \$1,000, 115 per cent. up to  
One hundred and fifteen \$1,000, 116 per cent. up to  
One hundred and sixteen \$1,000, 117 per cent. up to  
One hundred and seventeen \$1,000, 118 per cent. up to  
One hundred and eighteen \$1,000, 119 per cent. up to  
One hundred and nineteen \$1,000, 120 per cent. up to  
One hundred and twenty \$1,000, 121 per cent. up to  
One hundred and twenty-one \$1,000, 122 per cent. up to  
One hundred and twenty-two \$1,000, 123 per cent. up to  
One hundred and twenty-three \$1,000, 124 per cent. up to  
One hundred and twenty-four \$1,000, 125 per cent. up to  
One hundred and twenty-five \$1,000, 126 per cent. up to  
One hundred and twenty-six \$1,000, 127 per cent. up to  
One hundred and twenty-seven \$1,000, 128 per cent. up to  
One hundred and twenty-eight \$1,000, 129 per cent. up to  
One hundred and twenty-nine \$1,000, 130 per cent. up to  
One hundred and thirty \$1,000, 131 per cent. up to  
One hundred and thirty-one \$1,000, 132 per cent. up to  
One hundred and thirty-two \$1,000, 133 per cent. up to  
One hundred and thirty-three \$1,000, 134 per cent. up to  
One hundred and thirty-four \$1,000, 135 per cent. up to  
One hundred and thirty-five \$1,000, 136 per cent. up to  
One hundred and thirty-six \$1,000, 137 per cent. up to  
One hundred and thirty-seven \$1,000, 138 per cent. up to  
One hundred and thirty-eight \$1,000, 139 per cent. up to  
One hundred and thirty-nine \$1,000, 140 per cent. up to  
One hundred and forty \$1,000, 141 per cent. up to  
One hundred and forty-one \$1,000, 142 per cent. up to  
One hundred and forty-two \$1,000, 143 per cent. up to  
One hundred and forty-three \$1,000, 144 per cent. up to  
One hundred and forty-four \$1,000, 145 per cent. up to  
One hundred and forty-five \$1,000, 146 per cent. up to  
One hundred and forty-six \$1,000, 147 per cent. up to  
One hundred and forty-seven \$1,000, 148 per cent. up to  
One hundred and forty-eight \$1,000, 149 per cent. up to  
One hundred and forty-nine \$1,000, 150 per cent. up to  
One hundred and fifty \$1,000, 151 per cent. up to  
One hundred and fifty-one \$1,000, 152 per cent. up to  
One hundred and fifty-two \$1,000, 153 per cent. up to  
One hundred and fifty-three \$1,000, 154 per cent. up to  
One hundred and fifty-four \$1,000, 155 per cent. up to  
One hundred and fifty-five \$1,000, 156 per cent. up to  
One hundred and fifty-six \$1,000, 157 per cent. up to  
One hundred and fifty-seven \$1,000, 158 per cent. up to  
One hundred and fifty-eight \$1,000, 159 per cent. up to  
One hundred and fifty-nine \$1,000, 160 per cent. up to  
One hundred and sixty \$1,000, 161 per cent. up to  
One hundred and sixty-one \$1,000, 162 per cent. up to  
One hundred and sixty-two \$1,000, 163 per cent. up to  
One hundred and sixty-three \$1,000, 164 per cent. up to  
One hundred and sixty-four \$1,000, 165 per cent. up to  
One hundred and sixty-five \$1,000, 166 per cent. up to  
One hundred and sixty-six \$1,000, 167 per cent. up to  
One hundred and sixty-seven \$1,000, 168 per cent. up to  
One hundred and sixty-eight \$1,000, 169 per cent. up to  
One hundred and sixty-nine \$1,000, 170 per cent. up to  
One hundred and seventy \$1,000, 171 per cent. up to  
One hundred and seventy-one \$1,000, 172 per cent. up to  
One hundred and seventy-two \$1,000, 173 per cent. up to  
One hundred and seventy-three \$1,000, 174 per cent. up to  
One hundred and seventy-four \$1,000, 175 per cent. up to  
One hundred and seventy-five \$1,000, 176 per cent. up to  
One hundred and seventy-six \$1,000, 177 per cent. up to  
One hundred and seventy-seven \$1,000, 178 per cent. up to  
One hundred and seventy-eight \$1,000, 179 per cent. up to  
One hundred and seventy-nine \$1,000, 180 per cent. up to  
One hundred and eighty \$1,000, 181 per cent. up to  
One hundred and eighty-one \$1,000, 182 per cent. up to  
One hundred and eighty-two \$1,000, 183 per cent. up to  
One hundred and eighty-three \$1,000, 184 per cent. up to  
One hundred and eighty-four \$1,000, 185 per cent. up to  
One hundred and eighty-five \$1,000, 186 per cent. up to  
One hundred and eighty-six \$1,000, 187 per cent. up to  
One hundred and eighty-seven \$1,000, 188 per cent. up to  
One hundred and eighty-eight \$1,000, 189 per cent. up to  
One hundred and eighty-nine \$1,000, 190 per cent. up to  
One hundred and ninety \$1,000, 191 per cent. up to  
One hundred and ninety-one \$1,000, 192 per cent. up to  
One hundred and ninety-two \$1,000, 193 per cent. up to  
One hundred and ninety-three \$1,000, 194 per cent. up to  
One hundred and ninety-four \$1,000, 195 per cent. up to  
One hundred and ninety-five \$1,000, 196 per cent. up to  
One hundred and ninety-six \$1,000, 197 per cent. up to  
One hundred and ninety-seven \$1,000, 198 per cent. up to  
One hundred and ninety-eight \$1,000, 199 per cent. up to  
One hundred and ninety-nine \$1,000, 200 per cent. up to  
Two hundred \$1,000, 201 per cent. up to  
Two hundred and one \$1,000, 202 per cent. up to  
Two hundred and two \$1,000, 203 per cent. up to  
Two hundred and three \$1,000, 204 per cent. up to  
Two hundred and four \$1,000, 205 per cent. up to  
Two hundred and five \$1,000, 206 per cent. up to  
Two hundred and six \$1,000, 207 per cent. up to  
Two hundred and seven \$1,000, 208 per cent. up to  
Two hundred and eight \$1,000, 209 per cent. up to  
Two hundred and nine \$1,000, 210 per cent. up to  
Two hundred and ten \$1,000, 211 per cent. up to  
Two hundred and eleven \$1,000, 212 per cent. up to  
Two hundred and twelve \$1,000, 213 per cent. up to  
Two hundred and thirteen \$1,000, 214 per cent. up to  
Two hundred and fourteen \$1,000, 215 per cent. up to  
Two hundred and fifteen \$1,000, 216 per cent. up to  
Two hundred and sixteen \$1,000, 217 per cent. up to  
Two hundred and seventeen \$1,000, 218 per cent. up to  
Two hundred and eighteen \$1,000, 219 per cent. up to  
Two hundred and nineteen \$1,000, 220 per cent. up to  
Two hundred and twenty \$1,000, 221 per cent. up to  
Two hundred and twenty-one \$1,000, 222 per cent. up to  
Two hundred and twenty-two \$1,000, 223 per cent. up to  
Two hundred and twenty-three \$1,000, 224 per cent. up to  
Two hundred and twenty-four \$1,000, 225 per cent. up to  
Two hundred and twenty-five \$1,000, 226 per cent. up to  
Two hundred and twenty-six \$1,000, 227 per cent. up to  
Two hundred and twenty-seven \$1,000, 228 per cent. up to  
Two hundred and twenty-eight \$1,000, 229 per cent. up to  
Two hundred and twenty-nine \$1,000, 230 per cent. up to  
Two hundred and thirty \$1,000, 231 per cent. up to  
Two hundred and thirty-one \$1,000, 232 per cent. up to  
Two hundred and thirty-two \$1,000, 233 per cent. up to  
Two hundred and thirty-three \$1,000, 234 per cent. up to  
Two hundred and thirty-four \$1,000, 235 per cent. up to  
Two hundred and thirty-five \$1,000, 236 per cent. up to  
Two hundred and thirty-six \$1,000, 237 per cent. up to  
Two hundred and thirty-seven \$1,000, 238 per cent. up to  
Two hundred and thirty-eight \$1,000, 239 per cent. up to  
Two hundred and thirty-nine \$1,000, 240 per cent. up to  
Two hundred and forty \$1,000, 241 per cent. up to  
Two hundred and forty-one \$1,000, 242 per cent. up to  
Two hundred and forty-two \$1,000, 243 per cent. up to  
Two hundred and forty-three \$1,000, 244 per cent. up to  
Two hundred and forty-four \$1,000, 245 per cent. up to  
Two hundred and forty-five \$1,000, 246 per cent. up to  
Two hundred and forty-six \$1,000, 247 per cent. up to  
Two hundred and forty-seven \$1,000, 248 per cent. up to  
Two hundred and forty-eight \$1,000, 249 per cent. up to  
Two hundred and forty-nine \$1,000, 250 per cent. up to  
Two hundred and fifty \$1,000, 251 per cent. up to  
Two hundred and fifty-one \$1,000, 252 per cent. up to  
Two hundred and fifty-two \$1,000, 253 per cent. up to  
Two hundred and fifty-three \$1,000, 254 per cent. up to  
Two hundred and fifty-four \$1,000, 255 per cent. up to  
Two hundred and fifty-five \$1,000, 256 per cent. up to  
Two hundred and fifty-six \$1,000, 257 per cent. up to  
Two hundred and fifty-seven \$1,000, 258 per cent. up to  
Two hundred and fifty-eight \$1,000, 259 per cent. up to  
Two hundred and fifty-nine \$1,000, 260 per cent. up to  
Two hundred and sixty \$1,000, 261 per cent. up to  
Two hundred and sixty-one \$1,000, 262 per cent. up to  
Two hundred and sixty-two \$1,000, 263 per cent. up to  
Two hundred and sixty-three \$1,000, 264 per cent. up to  
Two hundred and sixty-four \$1,000, 265 per cent. up to  
Two hundred and sixty-five \$1,000, 266 per cent. up to  
Two hundred and sixty-six \$1,000, 267 per cent. up to  
Two hundred and sixty-seven \$1,000, 268 per cent. up to  
Two hundred and sixty-eight \$1,000, 269 per cent. up to  
Two hundred and sixty-nine \$1,000, 270 per cent. up to  
Two hundred and seventy \$1,000, 271 per cent. up to  
Two hundred and seventy-one \$1,000, 272 per cent. up to  
Two hundred and seventy-two \$1,000, 273 per cent. up to  
Two hundred and seventy-three \$1,000, 274 per cent. up to  
Two hundred and seventy-four \$1,000, 275 per cent. up to  
Two hundred and seventy-five \$1,000, 276 per cent. up to  
Two hundred and seventy-six \$1,000, 277 per cent. up to  
Two hundred and seventy-seven \$1,000, 278 per cent. up to  
Two hundred and seventy-eight \$1,000, 279 per cent. up to  
Two hundred and seventy-nine \$1,000, 280 per cent. up to  
Two hundred and eighty \$1,000, 281 per cent. up to  
Two hundred and eighty-one \$1,000, 282 per cent. up to  
Two hundred and eighty-two \$1,000, 283 per cent. up to  
Two hundred and eighty-three \$1,000, 284 per cent. up to  
Two hundred and eighty-four \$1,000, 285 per cent. up to  
Two hundred and eighty-five \$1,000, 286 per cent. up to  
Two hundred and eighty-six \$1,000, 287 per cent. up to  
Two hundred and eighty-seven \$1,000, 288 per cent. up to  
Two hundred and eighty-eight \$1,000, 289 per cent. up to  
Two hundred and eighty-nine \$1,000, 290 per cent. up to  
Two hundred and ninety \$1,000, 291 per cent. up to  
Two hundred and ninety-one \$1,000, 292 per cent. up to  
Two hundred and ninety-two \$1,000, 293 per cent. up to  
Two hundred and ninety-three \$1,000, 294 per cent. up to  
Two hundred and ninety-four \$1,000, 295 per cent. up to  
Two hundred and ninety-five \$1,000, 296 per cent. up to  
Two hundred and ninety-six \$1,000, 297 per cent. up to  
Two hundred and ninety-seven \$1,000, 298 per cent. up to  
Two hundred and ninety-eight \$1,000, 299 per cent. up to  
Two hundred and ninety-nine \$1,000, 300 per cent. up to  
Three hundred \$1,000, 301 per cent. up to  
Three hundred and one \$1,000, 302 per cent. up to  
Three hundred and two \$1,000, 303 per cent. up to  
Three hundred and three \$1,000, 304 per cent. up to  
Three hundred and four \$1,000, 305 per cent. up to  
Three hundred and five \$1,000, 306 per cent. up to  
Three hundred and six \$1,000, 307 per cent. up to  
Three hundred and seven \$1,000, 308 per cent. up to  
Three hundred and eight \$1,000, 309 per cent. up to  
Three hundred and nine \$1,000, 310 per cent. up to  
Three hundred and ten \$1,000, 311 per cent. up to  
Three hundred and eleven \$1,000, 312 per cent. up to  
Three hundred and twelve \$1,000, 313 per cent. up to  
Three hundred and thirteen \$1,000, 314 per cent. up to  
Three hundred and fourteen \$1,000, 315 per cent. up to  
Three hundred and fifteen \$1,000, 316 per cent. up to  
Three hundred and sixteen \$1,000, 317 per cent. up to  
Three hundred and seventeen \$1,000, 318 per cent. up to  
Three hundred and eighteen \$1,000, 319 per cent. up to  
Three hundred and nineteen \$1,000, 320 per cent. up to  
Three hundred and twenty \$1,000, 321 per cent. up to  
Three hundred and twenty-one \$1,000, 322 per cent. up to  
Three hundred and twenty-two \$1,000, 323 per cent. up to  
Three hundred and twenty-three \$1,000, 324 per cent. up to  
Three hundred and twenty-four \$1,000, 325 per cent. up to  
Three hundred and twenty-five \$1,000, 326 per cent. up to  
Three hundred and twenty-six \$1,000, 327 per cent. up to  
Three hundred and twenty-seven \$1,000, 328 per cent. up to  
Three hundred and twenty-eight \$1,000, 329 per cent. up to  
Three hundred and twenty-nine \$1,000, 330 per cent. up to  
Three hundred and thirty \$1,000, 331 per cent. up to  
Three hundred and thirty-one \$1,000, 332 per cent. up to  
Three hundred and thirty-two \$1,000, 333 per cent. up to  
Three hundred and thirty-three \$1,000, 334 per cent. up to  
Three hundred and thirty-four \$1,000, 335 per cent. up to  
Three hundred and thirty-five \$1,000, 336 per cent. up to  
Three hundred and thirty-six \$1,000, 337 per cent. up to  
Three hundred and thirty-seven \$1,000, 338 per cent. up to  
Three hundred and thirty-eight \$1,000, 339 per cent. up to  
Three hundred and thirty-nine \$1,000, 340 per cent. up to  
Three hundred and forty \$1,000, 341 per cent. up to  
Three hundred and forty-one \$1,000, 342 per cent. up to  
Three hundred and forty-two \$1,000, 343 per cent. up to  
Three hundred and forty-three \$1,000, 344 per cent. up to  
Three hundred and forty-four \$1,000, 345 per cent. up to  
Three hundred and forty-five \$1,000, 346 per cent. up to  
Three hundred and forty-six \$1,000, 347 per cent. up to  
Three hundred and forty-seven \$1,000, 348 per cent. up to  
Three hundred and forty-eight \$1,000, 349 per cent. up to  
Three hundred and forty-nine \$1,000, 350 per cent. up to  
Three hundred and fifty \$1,000, 351 per cent. up to  
Three hundred and fifty-one \$1,000, 352 per cent. up to  
Three hundred and fifty-two \$1,000, 353 per cent. up to  
Three hundred and fifty-three \$1,000, 354 per cent. up to  
Three hundred and fifty-four \$1,000, 355 per cent. up to  
Three hundred and fifty-five \$1,000, 356 per cent. up to  
Three hundred and fifty-six \$1,000, 357 per cent. up to  
Three hundred and fifty-seven \$1,000, 358 per cent. up to  
Three hundred and fifty-eight \$1,000, 359 per cent. up to  
Three hundred and fifty-nine \$1,000, 360 per cent. up to  
Three hundred and sixty \$1,000, 361 per cent. up to  
Three hundred and sixty-one \$1,000, 362 per cent. up to  
Three hundred and sixty-two \$1,000, 363 per cent. up to  
Three hundred and sixty-three \$1,000, 364 per cent. up to  
Three hundred and sixty-four \$1,000, 365 per cent. up to  
Three hundred and sixty-five \$1,000, 366 per cent. up to  
Three hundred and sixty-six \$1,000, 367 per cent. up to  
Three hundred and sixty-seven \$1,000, 368 per cent. up to  
Three hundred and sixty-eight \$1,000, 369 per cent. up to  
Three hundred and sixty-nine \$1,000, 370 per cent. up to  
Three hundred and seventy \$1,000, 371 per cent. up to  
Three hundred and seventy-one \$1,000, 372 per cent. up to  
Three hundred and seventy-two \$1,000, 373 per cent. up to  
Three hundred and seventy-three \$1,000, 374 per cent. up to  
Three hundred and seventy-four \$1,000, 375 per cent. up to  
Three hundred and seventy-five \$1,000, 376 per cent. up to  
Three hundred and seventy-six \$1,000, 377 per cent. up to  
Three hundred and seventy-seven \$1,000, 378 per cent. up to  
Three hundred and seventy-eight \$1,000, 379 per cent. up to  
Three hundred and seventy-nine \$1,000, 380 per cent. up to  
Three hundred and eighty \$1,000, 381 per cent. up to  
Three hundred and eighty-one \$1,000, 382 per cent. up to  
Three hundred and eighty-two \$1,000, 383 per cent. up to  
Three hundred and eighty-three \$1,000, 384 per cent. up to  
Three hundred and eighty-four \$1,000, 385 per cent. up to  
Three hundred and eighty-five \$1,000, 386 per cent. up to  
Three hundred and eighty-six \$1,000, 387 per cent. up to  
Three hundred and eighty-seven \$1,000, 388 per cent. up to  
Three hundred and eighty-eight \$1,000, 389 per cent. up to  
Three hundred and eighty-nine \$1,000, 390 per cent. up to  
Three hundred and ninety \$1,000, 391 per cent. up to  
Three hundred and ninety-one \$1,000, 392 per cent. up to  
Three hundred and ninety-two \$1,000, 393 per cent. up to  
Three hundred and ninety-three \$1,000, 394 per cent. up to  
Three hundred and ninety-four \$1,000, 395 per cent. up to  
Three hundred and ninety-five \$1,000, 396 per cent. up to  
Three hundred and ninety-six \$1,000, 397 per cent. up to  
Three hundred and ninety-seven \$1,000, 398 per cent. up to  
Three hundred and ninety-eight \$1,000, 399 per cent. up to  
Three hundred and ninety-nine \$1,000, 400 per cent. up to  
Four hundred \$1,000, 401 per cent. up to  
Four hundred and one \$1,000, 402 per cent. up to  
Four hundred and two \$1,000, 403 per cent. up to  
Four hundred and three \$1,000, 404 per cent. up to  
Four hundred and four \$1,000, 405 per cent. up to  
Four hundred and five \$1,000, 406 per cent. up to  
Four hundred and six \$1,000, 407 per cent. up to  
Four hundred and seven \$1,000, 408 per cent. up to  
Four hundred and eight \$1,000, 409 per cent. up to  
Four hundred and nine \$1,000, 410 per cent. up to  
Four hundred and ten \$1,000, 411 per cent. up to  
Four hundred and eleven \$1,000, 412 per cent. up to  
Four hundred and twelve \$1,000, 413 per cent. up to  
Four hundred and thirteen \$1,000, 414 per cent. up to  
Four hundred and fourteen \$1,000, 415 per cent. up to  
Four hundred and fifteen \$1,000, 416 per cent. up to  
Four hundred and sixteen \$1,000, 417 per cent. up to  
Four hundred and seventeen \$1,000, 418 per cent. up to  
Four hundred and eighteen \$1,000, 419 per cent. up to  
Four hundred and nineteen \$1,000, 420 per cent. up to  
Four hundred and twenty \$1,000, 421 per cent. up to  
Four hundred and twenty-one \$1,000, 422 per cent. up to  
Four hundred and twenty-two \$1,000, 423 per cent. up to  
Four hundred and twenty-three \$1,000, 424 per cent. up to  
Four hundred and twenty-four \$1,000, 425 per cent. up to  
Four hundred and twenty-five \$1,000, 426 per cent. up to  
Four hundred and twenty-six \$1,000, 427 per cent. up to  
Four hundred and twenty-seven \$1,000, 428 per cent. up to  
Four hundred and twenty-eight \$1,000, 429 per cent. up to  
Four hundred and twenty-nine \$1,000, 430 per cent. up to  
Four hundred and thirty \$1,000, 431 per cent. up to  
Four hundred and thirty-one \$1,000, 432 per cent. up to  
Four hundred and thirty-two \$1,000, 433 per cent. up to  
Four hundred and thirty-three \$1,000, 434 per cent. up to  
Four hundred and thirty-four \$1,000, 435 per cent. up to  
Four hundred and thirty-five \$1,000, 436 per cent. up to  
Four hundred and thirty-six \$1,000, 437 per cent. up to  
Four hundred and thirty-seven \$1,000, 438 per cent. up to  
Four hundred and thirty-eight \$1,000, 439 per cent. up to  
Four hundred and thirty-nine \$1,000, 440 per cent. up to  
Four hundred and forty \$1,000, 441 per cent. up to  
Four hundred and forty-one \$1,000, 442 per cent. up to  
Four hundred and forty-two \$1,000, 443 per cent. up to  
Four hundred and forty-three \$1,000, 444 per cent. up to  
Four hundred and forty-four \$1,000, 445 per cent. up to  
Four hundred and forty-five \$1,000, 446 per cent. up to  
Four hundred and forty-six \$1,000, 447 per cent. up to  
Four hundred and forty-seven \$1,000, 448 per cent. up to  
Four hundred and forty-eight \$1,000, 449 per cent. up to  
Four hundred and forty-nine \$1,000, 450 per cent. up to  
Four hundred and fifty \$1,000, 451 per cent. up to  
Four hundred and fifty-one \$1,000, 452 per cent. up to  
Four hundred and fifty-two \$1,000, 453 per cent. up to  
Four hundred and fifty-three \$1,000, 454 per cent. up to  
Four hundred and fifty-four \$1,000, 455 per cent. up to  
Four hundred and fifty-five \$1,000, 456 per cent. up to  
Four hundred and fifty-six \$1,000, 457 per cent. up to  
Four hundred and fifty-seven \$1,000, 458 per cent. up to  
Four hundred and fifty-eight \$1,000, 459 per cent. up to  
Four hundred and fifty-nine \$1,000, 460 per cent. up to  
Four hundred and sixty \$1,000, 461 per cent. up to  
Four hundred and sixty-one \$1,000, 462 per cent. up to  
Four hundred and sixty-two \$1,000, 463 per cent. up to  
Four hundred and sixty-three \$1,000, 464 per cent. up to  
Four hundred and sixty-four \$1,000, 465 per cent. up to  
Four hundred and sixty-five \$1,000, 466 per cent. up to  
Four hundred and sixty-six \$1,000, 467 per cent. up to  
Four hundred and sixty-seven \$1,000, 468 per cent. up to  
Four hundred and sixty-eight \$1,000, 469 per cent. up to  
Four hundred and sixty-nine \$1,000, 470 per cent. up to  
Four hundred and seventy \$1,000, 471 per cent. up to  
Four hundred and seventy-one \$1,000, 472 per cent. up to  
Four hundred and seventy-two \$1,000, 473 per cent. up to  
Four hundred and seventy-three \$1,000, 474 per cent. up to  
Four hundred and seventy-four \$1,000, 475 per cent. up to  
Four hundred and seventy-five \$1,000, 476 per cent. up to  
Four hundred and seventy-six \$1,000, 477 per cent. up to  
Four hundred and seventy-seven \$1,000, 478 per cent. up to  
Four hundred and seventy-eight \$1,000, 479 per cent. up to  
Four hundred and seventy-nine \$1,000, 480 per cent. up to  
Four hundred and eighty \$1,000, 481 per cent. up to  
Four hundred and eighty-one \$1,000, 482 per cent. up to  
Four hundred and eighty-two \$1,000, 483 per cent. up to  
Four hundred and eighty-three \$1,000, 484 per cent. up to  
Four hundred and eighty-four \$1,00







Idaho Times

TELEPHONE 38

Full Leased Wire Service United Press Association, Full N. D. A. Feature Service, Associated Press, etc.

Published Six Days a Week at 115 Main Avenue East, Twin Falls, Idaho, by IDAHO TIMES PUBLISHING CO.

Entered as Second Class Matter in the Twin Falls Post Office April 11, 1914, under Act of Congress, March 3, 1879.

Subscription Rates: By Carrier, in Advance, 1.00 per Year; By Mail, Outside Idaho, 1.50 per Year.

NATIONAL REPRESENTATIVES: W. C. ROBINSON & CO., INC., 312 Broadway, New York, N. Y.

When the national government furnishes unemployment relief on a nation-wide scale, it is of the highest importance that the relief machinery be kept on a non-political basis.

The Ohio government is doing its best to keep its hands clean in this respect as evidenced by recent happenings in Ohio.

The Ohio governor not long ago made a bitter attack on the relief set-up in his state, charging that it was wasteful and inefficient.

Abundant evidence was immediately offered to disprove his charges; but, he persisted, and the suspicion arose that what he really wanted was a chance to staff the relief agencies with his own political appointees.

Now Relief Administrator Hopkins has hit back. The governor stands accused of having permitted a "shakedown" of business men who deal with the state relief commission; and, in all, he is in a great deal of extremely hot water.

This particular effort to lay political hands on the relief machinery has brought its author nothing but trouble.

Hiller timed his sensational rearmament announcement just about right. A couple of weeks later—just the baseball season on—and the U. S. public might never have learned of it.

AFTER THE LITTLE TELLOWES: The federal government continues its drive against the "hangers-on" of gangland. A Chicagoan who joined up with John Dillinger just before that worthy was rubbed out is sentenced to life imprisonment; two girl friends of Alvin Karpis and Harry Campbell draw five-year terms in Miami, Fla.; in San Francisco, persons accused of supplying the late "Baby Face" Nelson with guns are brought to trial.

It needs to be emphasized that this kind of work is fully as important as the task of cracking down on the ringleaders themselves. No criminal gang can exist in a vacuum. It has to have its small fry satellites—the hangers-on—who make its existence easy and comfortable.

Such persons are really as dangerous to society as the big shots they serve. One of the most encouraging signs of the current anti-crime campaign is the fact that they are at last getting energetic attention.

Clarence Darrow says "Good times are gone forever." But he is one who several years ago predicted the 18th amendment would never be repealed.

TO UNITE AGAINST CRIME: A promising beginning is being made in the task of providing the United States with a unified police system which can cope with modern criminals.

Fourteen states and some 150 cities are expected to get together in the near future in a scheme of co-operation by which information can be exchanged promptly and co-operation can be achieved. State bureaus of identification are being established at Washington. Legislatures are considering schemes to have state police forces supplement the work of sheriffs and country police.

The result of this should be to make the path of such men as Dillinger and Floyd infinitely more rocky. The kind of co-operation that will enable the law to strike promptly across state and city lines is precisely the kind of thing that the criminal cannot cope with. It is encouraging to see that we are getting to get some of it.

LABOR CLEARS ECONOMIC SKY: Washington observers now believe that the threatened wave of strikes in major industries will not materialize this spring.

A few weeks ago the outlook was dark. Leaders of organized labor in the main were in a sullen, demoralized state. Serious trouble threatened in soft coal, automobile, steel, rubber tire, and textile trades; and no one needs to meditate very long to realize what a succession of strikes in these basic industries would do to the recovery program.

Now, however, the sky is brighter. Concessions have been made by both sides. President Roosevelt's dream of an industry-labor truce seems closer to realization, with labor leaders mollified by assurance of administration support for at least part of labor's legislative program.

It is to be hoped that this new optimism is justified. Widespread labor trouble is always costly to everyone concerned. It would be especially costly just now.

It is the responsibility of labor, industry, and government to find a peaceful solution for current difficulties.

American women get \$386,000,000 alimony annually. Cupid seems to be giving way to cupid.

THE DARK BLOND by CARLETON KENDRAKE. A dramatic story featuring a woman with dark hair and a man with a white beard. The text is arranged in a circular pattern around a central illustration of a woman's face.

MILICENT GRAVES' employer... "The nurse I gave you?" "Why," he said, "I still have it of course." "Why did you leave in such a hurry?" "Happened significantly to me."

HISTORY Of Twin Falls City & County

As Gleaned from Files of The Times

15 YEARS AGO

ATLANTA—Means of sending music by wireless has been devised... ATLANTA—Means of sending music by wireless has been devised...

27 YEARS AGO

They say there was an election in the city of Twin Falls... They say there was an election in the city of Twin Falls...

You May Not Know That

It was a year ago tomorrow that the Union Pacific's new streamlined train visited northern Idaho, coming on to Twin Falls at the initial invitation of the Evening Times.

Mountain View

Mr. and Mrs. H. Vander Haar, left, left their home at Sheldon, W. Va., Wednesday, after having spent the past two weeks visiting at the home of Mr. and Mrs. H. W. Rice...

FOX-USED GROWS NEXT

WASHINGTON, (AP)—Bulls are not only more like the corn of a great A. grain, they are also more like the corn of a great A. grain...

STAR SIGNALS Octavine

For persons who believe that human destiny is guided by the planets, the daily horoscope outlined by a noted astrologer.

APRIL 3

Today is the beginning of a month of energy and activity... Today is the beginning of a month of energy and activity...

Mountain View

Mr. and Mrs. H. Vander Haar, left, left their home at Sheldon, W. Va., Wednesday, after having spent the past two weeks visiting at the home of Mr. and Mrs. H. W. Rice...

THIS CAN'T BE TORN UP SO EASILY!

Advertisement for 'The People's Europe' featuring a large illustration of a globe and text describing the publication's content and availability.

PAUL MALLON'S NEWS BEHIND THE NEWS

An Exclusive Evening Times Daily Report on the News-Making Events in the Nation's Capital, Edited by an Expert Interpreter and Commentator (Copyright, 1935, by Paul Mallon)

JUMBO-COLORED... "I was surprised to see that the presidential news item did not make up such things out of their heads."

WHERE... A confidential survey has been made of the relief rolls by the F. E. A. and it shows very distinctly the problem of the relief rolls.

WHO... The survey further shows that nearly one-third (about 44 per cent) are factory workers.

UNCERTAINTIES... "I was surprised to see that the presidential news item did not make up such things out of their heads."

SOLUTION... The program must be adapted to the unemployed, not the unemployed to the program.

CERTAINTIES... This is a very muddled situation, but it is not. The only part muddled was the fact that the public has been told one thing and another.

EXPLANATION... This does not imply any lack of confidence in Mr. Ickes on the part of the White House or anyone else.

HOLLISTER... Mr. and Mrs. Karl D. Patrick, left, left their home at Sheldon, W. Va., Wednesday, after having spent the past two weeks visiting at the home of Mr. and Mrs. H. W. Rice...

# SOCIETY

You Are Invited to Attend Your Social Items Phone 98 Before 10:30 a. m.

## R. T. A. COUNCIL INSTALLS NEW OFFICERS

An important event of the year was the installing of officers of the Twin Falls Council of Parents and Teachers... Mrs. W. E. Wilson was elected president...

## Calendar

Degree of Honor will meet at 8 o'clock... Maroon Women's club will meet at the home of Mrs. J. W. Williamson...

## MISS NEWLON CHOSEN PRESIDENT OF B. P. W.

At the annual business session of the B. P. W. club... Miss Newlon was elected president...

## REPORTS OFFICERS

Reports at the business session included that of the public relations officer... Mrs. J. J. Fleming, tuberculosis secretary...

## MISS CLEGG AT B. P. W. ADDRESSES CLUB MEETING

The "bleeding of colors in walls, curtains and pictures was discussed... Miss Clegg addressed the meeting...

## LODGE PLANS TO HOLD CAMP PARTY

At the business session of the Neighbors of Woodcraft meeting... The lodge plans to hold a camp party...

## CAMP FIRE GIRLS

Watoque group of Camp Fire girls met yesterday afternoon for their election... Frances Thorne was chosen president...

## SESSION PRESIDENT BY MISS T. DAN CONNOR

Interesting sidelights on the recent session of the Idaho legislative assembly... Miss T. Dan Connor presided...

## CAPE EMBLEMS THE RAGE

Complete, Diagrammed Marlin Pattern... You can do anything from lunch at a home hotel to party tables in this track...

## IT'S JUST OUR SPRING PATTERNS

It's just our spring patterns... Complete, Diagrammed Marlin Pattern... You can do anything from lunch at a home hotel to party tables in this track...

## OPEN NIGHTS

Zip-Way Market... 11-P. M. FREE DELIVERY SERVICE

## MAPS WILL HELP ON BIRD CENSUS

### Camp Fire Girls' Survey of Feathered Life Set for April 27

For a bird census, the date of which is tentatively set for April 27, maps will be made to aid in the undertaking... The maps will be made to aid in the undertaking...

## THIRD GUARDIANS ASSOCIATION

The "guardians association announced that the first meeting will be held... The association will be held...

## CHILD SUCCEUMBS AFTER ACCIDENT

Verdon Thiel, 2, struck by Truck on Roadside... Verdon Thiel, 2, and one-half year old son of Mr. and Mrs. J. Thiel, Dietrich, died at the hospital...

## SERVICES HONOR MRS. SCHORZMAN

Funeral services were held for Mrs. Schorzman... Mrs. Schorzman was born in the cemetery at Wootley...

## COUNCIL RECESSSES

Twin Falls city council, in regular session last evening, held the reading of monthly reports... The council recessed...

## BONDS SOLD FAST

WASHINGTON, April 2 (AP)—Treasury announced today it sold \$3,012,822 in "baby bonds" during the first month in which this method of financing was attempted...

## UNDERTAKERS

A Berlin school has perfected a telescope without a lens... The telescope magnifies 8500 times...

## SPEAKS MIND

### Miss Martha Hanson, University of California Student, Would Not Provide at Luncheon, Banquet

Miss Martha Hanson, University of California student, would not provide at luncheon, banquet... She is a student at the University of California...

## ALASKA'S NAME OFFICERS' SLATE

Organization of a permanent Alaskan society has been formed... The society will be formed...

## INSURANCE MEN GOING TO BOISE

Harry Nelson, district manager... The insurance men are going to Boise...

## TRIO IN LOVE CASE TERMED 'NINCOMPOOPS'

CLEVELAND, April 2 (AP)—Common Pleas Judge Alva Corbett today announced an "incompetent" verdict in a love triangle... The case was termed 'nincompoops'...

## NEW SCHEDULES EFFECTIVE HERE

New schedules of train and mail service went into effect here today with the arrival of the morning train... The schedules are effective here...

## X-Ray Will Show Exact Status of Upside-Down Boy

FALL RIVER, Mass., April 2 (AP)—The X-ray will be taken today to show the exact status of the 13-year-old Jimmy Nelson... The X-ray will show the exact status of the upside-down boy...

## JUNIOR HIGH NOTES

### 'Fairly Tales and Nursery Rhymes' Will be Presented Tomorrow by 'The Three and Theirs'

'Fairly Tales and Nursery Rhymes' will be presented tomorrow by 'The Three and Theirs'... The group will be presenting...

## TRIO IN LOVE CASE TERMED 'NINCOMPOOPS'

CLEVELAND, April 2 (AP)—Common Pleas Judge Alva Corbett today announced an "incompetent" verdict in a love triangle... The case was termed 'nincompoops'...

## TRIO IN LOVE CASE TERMED 'NINCOMPOOPS'

CLEVELAND, April 2 (AP)—Common Pleas Judge Alva Corbett today announced an "incompetent" verdict in a love triangle... The case was termed 'nincompoops'...

## TRIO IN LOVE CASE TERMED 'NINCOMPOOPS'

CLEVELAND, April 2 (AP)—Common Pleas Judge Alva Corbett today announced an "incompetent" verdict in a love triangle... The case was termed 'nincompoops'...

## TRIO IN LOVE CASE TERMED 'NINCOMPOOPS'

CLEVELAND, April 2 (AP)—Common Pleas Judge Alva Corbett today announced an "incompetent" verdict in a love triangle... The case was termed 'nincompoops'...

## TRIO IN LOVE CASE TERMED 'NINCOMPOOPS'

CLEVELAND, April 2 (AP)—Common Pleas Judge Alva Corbett today announced an "incompetent" verdict in a love triangle... The case was termed 'nincompoops'...

## TRIO IN LOVE CASE TERMED 'NINCOMPOOPS'

CLEVELAND, April 2 (AP)—Common Pleas Judge Alva Corbett today announced an "incompetent" verdict in a love triangle... The case was termed 'nincompoops'...

## NEW SCHEDULES EFFECTIVE HERE

### Train, Stage Revisions Placed in Effect

New schedules of train and mail service went into effect here today with the arrival of the morning train... The schedules are effective here...

## TRIO IN LOVE CASE TERMED 'NINCOMPOOPS'

CLEVELAND, April 2 (AP)—Common Pleas Judge Alva Corbett today announced an "incompetent" verdict in a love triangle... The case was termed 'nincompoops'...

## TRIO IN LOVE CASE TERMED 'NINCOMPOOPS'

CLEVELAND, April 2 (AP)—Common Pleas Judge Alva Corbett today announced an "incompetent" verdict in a love triangle... The case was termed 'nincompoops'...

## TRIO IN LOVE CASE TERMED 'NINCOMPOOPS'

CLEVELAND, April 2 (AP)—Common Pleas Judge Alva Corbett today announced an "incompetent" verdict in a love triangle... The case was termed 'nincompoops'...

## TRIO IN LOVE CASE TERMED 'NINCOMPOOPS'

CLEVELAND, April 2 (AP)—Common Pleas Judge Alva Corbett today announced an "incompetent" verdict in a love triangle... The case was termed 'nincompoops'...

## TRIO IN LOVE CASE TERMED 'NINCOMPOOPS'

CLEVELAND, April 2 (AP)—Common Pleas Judge Alva Corbett today announced an "incompetent" verdict in a love triangle... The case was termed 'nincompoops'...

## TRIO IN LOVE CASE TERMED 'NINCOMPOOPS'

CLEVELAND, April 2 (AP)—Common Pleas Judge Alva Corbett today announced an "incompetent" verdict in a love triangle... The case was termed 'nincompoops'...

## X-Ray Will Show Exact Status of Upside-Down Boy

### FALL RIVER, Mass., April 2 (AP)—The X-ray will be taken today to show the exact status of the 13-year-old Jimmy Nelson...

FALL RIVER, Mass., April 2 (AP)—The X-ray will be taken today to show the exact status of the 13-year-old Jimmy Nelson... The X-ray will show the exact status of the upside-down boy...

## TRIO IN LOVE CASE TERMED 'NINCOMPOOPS'

CLEVELAND, April 2 (AP)—Common Pleas Judge Alva Corbett today announced an "incompetent" verdict in a love triangle... The case was termed 'nincompoops'...

## TRIO IN LOVE CASE TERMED 'NINCOMPOOPS'

CLEVELAND, April 2 (AP)—Common Pleas Judge Alva Corbett today announced an "incompetent" verdict in a love triangle... The case was termed 'nincompoops'...

## TRIO IN LOVE CASE TERMED 'NINCOMPOOPS'

CLEVELAND, April 2 (AP)—Common Pleas Judge Alva Corbett today announced an "incompetent" verdict in a love triangle... The case was termed 'nincompoops'...

## TRIO IN LOVE CASE TERMED 'NINCOMPOOPS'

CLEVELAND, April 2 (AP)—Common Pleas Judge Alva Corbett today announced an "incompetent" verdict in a love triangle... The case was termed 'nincompoops'...

## TRIO IN LOVE CASE TERMED 'NINCOMPOOPS'

CLEVELAND, April 2 (AP)—Common Pleas Judge Alva Corbett today announced an "incompetent" verdict in a love triangle... The case was termed 'nincompoops'...

## TRIO IN LOVE CASE TERMED 'NINCOMPOOPS'

CLEVELAND, April 2 (AP)—Common Pleas Judge Alva Corbett today announced an "incompetent" verdict in a love triangle... The case was termed 'nincompoops'...

**Marian Martin Pattern**

CAPE EMBLEMS THE RAGE... Complete, Diagrammed Marlin Pattern... You can do anything from lunch at a home hotel to party tables in this track...

IT'S JUST OUR SPRING PATTERNS... Complete, Diagrammed Marlin Pattern... You can do anything from lunch at a home hotel to party tables in this track...

9334

**Zip-Way Market**

Corner 2nd Street and 3rd Avenue North

YOU CAN ALWAYS DRIVE UP TO OUR DOOR AND FIND AN ABUNDANCE OF PARKING SPACE!

Every convenience is afforded our patrons, including a ladies' modern rest room. There's no waiting, no delays. You find everything just as you want it.

OUR PRICES on our complete stock of new merchandise are COMPETITIVE WITH ANY IN TOWN!

Visit the Zip-Way Market Next Time—SEEING IS BELIEVING!

WE PAY TOP PRICES FOR EGGS! Bring them right up to our doors and avoid hunting for a parking space. You'll find this a real convenience.

MID-WEEK SPECIALS

GRAPEFRUIT 6 for 25c  
Arizona Apples 2 for 25c  
2 Pounds for 25c  
ZIP-WAY COFFEE 19c  
PEETS SOAP 4 for 19c

BE SURE TO VISIT OUR MEAT DEPT. The best and most sanitary butcher shop in the state, Government inspected meats. We invite your inspection.

FREE DELIVERY SERVICE

OPEN NIGHTS 11-P. M.

**Avon 100 Emulsifine**

Protect Your Orchard and Insure This Year's Crop by Spraying NOW with...

Also Aids in Control of Aphis and Other Insect Pests

For Sale by the Best Dealers!

**ASSOCIATED OIL CO.**

AVON OILS For Sale By **HARRY HELLER**

Warehouse Opposite Freight Depot

Phone 449-J or write to 138 2nd Ave. North for information regarding first class auto-battery repair work.

**Auto Electric Service**

MY WIFE KEEPS CALLING ME "OLD PUT-IT-OFF-SKI!"

Control SCALE and LEAF ROLLER EGGS

Protect Your Orchard and Insure This Year's Crop by Spraying NOW with...

AVON 100 EMULSIFINE THE ORIGINAL FLUID EMULSIFIED OIL SPRAY

Also Aids in Control of Aphis and Other Insect Pests

For Sale by the Best Dealers!

**ASSOCIATED OIL CO.**

AVON OILS For Sale By **HARRY HELLER**

Warehouse Opposite Freight Depot

Phone 449-J or write to 138 2nd Ave. North for information regarding first class auto-battery repair work.

**Auto Electric Service**

MY WIFE KEEPS CALLING ME "OLD PUT-IT-OFF-SKI!"

Control SCALE and LEAF ROLLER EGGS

Protect Your Orchard and Insure This Year's Crop by Spraying NOW with...

AVON 100 EMULSIFINE THE ORIGINAL FLUID EMULSIFIED OIL SPRAY

Also Aids in Control of Aphis and Other Insect Pests

For Sale by the Best Dealers!

**ASSOCIATED OIL CO.**

AVON OILS For Sale By **HARRY HELLER**

Warehouse Opposite Freight Depot

Phone 449-J or write to 138 2nd Ave. North for information regarding first class auto-battery repair work.

**Auto Electric Service**

MY WIFE KEEPS CALLING ME "OLD PUT-IT-OFF-SKI!"

Control SCALE and LEAF ROLLER EGGS

Protect Your Orchard and Insure This Year's Crop by Spraying NOW with...

AVON 100 EMULSIFINE THE ORIGINAL FLUID EMULSIFIED OIL SPRAY

Also Aids in Control of Aphis and Other Insect Pests

For Sale by the Best Dealers!

**ASSOCIATED OIL CO.**

AVON OILS For Sale By **HARRY HELLER**

Warehouse Opposite Freight Depot

Phone 449-J or write to 138 2nd Ave. North for information regarding first class auto-battery repair work.

**Auto Electric Service**

MY WIFE KEEPS CALLING ME "OLD PUT-IT-OFF-SKI!"

Control SCALE and LEAF ROLLER EGGS

Protect Your Orchard and Insure This Year's Crop by Spraying NOW with...

AVON 100 EMULSIFINE THE ORIGINAL FLUID EMULSIFIED OIL SPRAY

Also Aids in Control of Aphis and Other Insect Pests

For Sale by the Best Dealers!

**ASSOCIATED OIL CO.**

AVON OILS For Sale By **HARRY HELLER**

Warehouse Opposite Freight Depot

Phone 449-J or write to 138 2nd Ave. North for information regarding first class auto-battery repair work.

**Auto Electric Service**

MY WIFE KEEPS CALLING ME "OLD PUT-IT-OFF-SKI!"

Control SCALE and LEAF ROLLER EGGS

Protect Your Orchard and Insure This Year's Crop by Spraying NOW with...

AVON 100 EMULSIFINE THE ORIGINAL FLUID EMULSIFIED OIL SPRAY

Also Aids in Control of Aphis and Other Insect Pests

For Sale by the Best Dealers!

**ASSOCIATED OIL CO.**

AVON OILS For Sale By **HARRY HELLER**

Warehouse Opposite Freight Depot

Phone 449-J or write to 138 2nd Ave. North for information regarding first class auto-battery repair work.

**Auto Electric Service**

MY WIFE KEEPS CALLING ME "OLD PUT-IT-OFF-SKI!"

Control SCALE and LEAF ROLLER EGGS

Protect Your Orchard and Insure This Year's Crop by Spraying NOW with...

AVON 100 EMULSIFINE THE ORIGINAL FLUID EMULSIFIED OIL SPRAY

Also Aids in Control of Aphis and Other Insect Pests

For Sale by the Best Dealers!

**ASSOCIATED OIL CO.**

AVON OILS For Sale By **HARRY HELLER**

Warehouse Opposite Freight Depot

Phone 449-J or write to 138 2nd Ave. North for information regarding first class auto-battery repair work.

**Auto Electric Service**

MY WIFE KEEPS CALLING ME "OLD PUT-IT-OFF-SKI!"

Control SCALE and LEAF ROLLER EGGS

Protect Your Orchard and Insure This Year's Crop by Spraying NOW with...

AVON 100 EMULSIFINE THE ORIGINAL FLUID EMULSIFIED OIL SPRAY

Also Aids in Control of Aphis and Other Insect Pests

For Sale by the Best Dealers!

**ASSOCIATED OIL CO.**

AVON OILS For Sale By **HARRY HELLER**

Warehouse Opposite Freight Depot

Phone 449-J or write to 138 2nd Ave. North for information regarding first class auto-battery repair work.

**Auto Electric Service**

MY WIFE KEEPS CALLING ME "OLD PUT-IT-OFF-SKI!"

Control SCALE and LEAF ROLLER EGGS

Protect Your Orchard and Insure This Year's Crop by Spraying NOW with...

AVON 100 EMULSIFINE THE ORIGINAL FLUID EMULSIFIED OIL SPRAY

Also Aids in Control of Aphis and Other Insect Pests

For Sale by the Best Dealers!

**ASSOCIATED OIL CO.**

AVON OILS For Sale By **HARRY HELLER**

Warehouse Opposite Freight Depot

Phone 449-J or write to 138 2nd Ave. North for information regarding first class auto-battery repair work.

**Auto Electric Service**

MY WIFE KEEPS CALLING ME "OLD PUT-IT-OFF-SKI!"

Control SCALE and LEAF ROLLER EGGS

Protect Your Orchard and Insure This Year's Crop by Spraying NOW with...

AVON 100 EMULSIFINE THE ORIGINAL FLUID EMULSIFIED OIL SPRAY

Also Aids in Control of Aphis and Other Insect Pests

For Sale by the Best Dealers!

**ASSOCIATED OIL CO.**

AVON OILS For Sale By **HARRY HELLER**

Warehouse Opposite Freight Depot

Phone 449-J or write to 138 2nd Ave. North for information regarding first class auto-battery repair work.

**Auto Electric Service**

MY WIFE KEEPS CALLING ME "OLD PUT-IT-OFF-SKI!"

Control SCALE and LEAF ROLLER EGGS

Protect Your Orchard and Insure This Year's Crop by Spraying NOW with...

AVON 100 EMULSIFINE THE ORIGINAL FLUID EMULSIFIED OIL SPRAY

Also Aids in Control of Aphis and Other Insect Pests

For Sale by the Best Dealers!

**ASSOCIATED OIL CO.**

AVON OILS For Sale By **HARRY HELLER**

Warehouse Opposite Freight Depot

Phone 449-J or write to 138 2nd Ave. North for information regarding first class auto-battery repair work.

**Auto Electric Service**

MY WIFE KEEPS CALLING ME "OLD PUT-IT-OFF-SKI!"

Control SCALE and LEAF ROLLER EGGS

Protect Your Orchard and Insure This Year's Crop by Spraying NOW with...

AVON 100 EMULSIFINE THE ORIGINAL FLUID EMULSIFIED OIL SPRAY

Also Aids in Control of Aphis and Other Insect Pests

For Sale by the Best Dealers!

**ASSOCIATED OIL CO.**

AVON OILS For Sale By **HARRY HELLER**

Warehouse Opposite Freight Depot

Phone 449-J or write to 138 2nd Ave. North for information regarding first class auto-battery repair work.

**Auto Electric Service**

MY WIFE KEEPS CALLING ME "OLD PUT-IT-OFF-SKI!"

Control SCALE and LEAF ROLLER EGGS

Protect Your Orchard and Insure This Year's Crop by Spraying NOW with...

AVON 100 EMULSIFINE THE ORIGINAL FLUID EMULSIFIED OIL SPRAY

Also Aids in Control of Aphis and Other Insect Pests

For Sale by the Best Dealers!

**ASSOCIATED OIL CO.**

AVON OILS For Sale By **HARRY HELLER**

Warehouse Opposite Freight Depot

Phone 449-J or write to 138 2nd Ave. North for information regarding first class auto-battery repair work.

**Auto Electric Service**

MY WIFE KEEPS CALLING ME "OLD PUT-IT-OFF-SKI!"

Control SCALE and LEAF ROLLER EGGS

Protect Your Orchard and Insure This Year's Crop by Spraying NOW with...

AVON 100 EMULSIFINE THE ORIGINAL FLUID EMULSIFIED OIL SPRAY

Also Aids in Control of Aphis and Other Insect Pests

For Sale by the Best Dealers!

**ASSOCIATED OIL CO.**

AVON OILS For Sale By **HARRY HELLER**

Warehouse Opposite Freight Depot

Phone 449-J or write to 138 2nd Ave. North for information regarding first class auto-battery repair work.

**Auto Electric Service**

MY WIFE KEEPS CALLING ME "OLD PUT-IT-OFF-SKI!"

Control SCALE and LEAF ROLLER EGGS

Protect Your Orchard and Insure This Year's Crop by Spraying NOW with...

AVON 100 EMULSIFINE THE ORIGINAL FLUID EMULSIFIED OIL SPRAY

Also Aids in Control of Aphis and Other Insect Pests

For Sale by the Best Dealers!

**ASSOCIATED OIL CO.**

AVON OILS For Sale By **HARRY HELLER**

Warehouse Opposite Freight Depot

Phone 449-J or write to 138 2nd Ave. North for information regarding first class auto-battery repair work.

**Auto Electric Service**

MY WIFE KEEPS CALLING ME "OLD PUT-IT-OFF-SKI!"

Control SCALE and LEAF ROLLER EGGS

Protect Your Orchard and Insure This Year's Crop by Spraying NOW with...

AVON 100 EMULSIFINE THE ORIGINAL FLUID EMULSIFIED OIL SPRAY

Also Aids in Control of Aphis and Other Insect Pests

For Sale by the Best Dealers!

**ASSOCIATED OIL CO.**

AVON OILS For Sale By **HARRY HELLER**

Warehouse Opposite Freight Depot

Phone 449-J or write to 138 2nd Ave. North for information regarding first class auto-battery repair work.

**Auto Electric Service**

MY WIFE KEEPS CALLING ME "OLD PUT-IT-OFF-SKI!"

Control SCALE and LEAF ROLLER EGGS

Protect Your Orchard and Insure This Year's Crop by Spraying NOW with...

AVON 100 EMULSIFINE THE ORIGINAL FLUID EMULSIFIED OIL SPRAY

Also Aids in Control of Aphis and Other Insect Pests

For Sale by the Best Dealers!

**ASSOCIATED OIL CO.**

AVON OILS For Sale By **HARRY HELLER**

Warehouse Opposite Freight Depot

Phone 449-J or write to 138 2nd Ave. North for information regarding first class auto-battery repair work.

**Auto Electric Service**

MY WIFE KEEPS CALLING ME "OLD PUT-IT-OFF-SKI!"

Control SCALE and LEAF ROLLER EGGS

Protect Your Orchard and Insure This Year's Crop by Spraying NOW with...

AVON 100 EMULSIFINE THE ORIGINAL FLUID EMULSIFIED OIL SPRAY

Also Aids in Control of Aphis and Other Insect Pests

For Sale by the Best Dealers!

**ASSOCIATED OIL CO.**

AVON OILS For Sale By **HARRY HELLER**

Warehouse Opposite Freight Depot

Phone 449-J or write to 138 2nd Ave. North for information regarding first class auto-battery repair work.

**Auto Electric Service**

MY WIFE KEEPS CALLING ME "OLD PUT-IT-OFF-SKI!"

Control SCALE and LEAF ROLLER EGGS

Protect Your Orchard and Insure This Year's Crop by Spraying NOW with...

AVON 100 EMULSIFINE THE ORIGINAL FLUID EMULSIFIED OIL SPRAY

Also Aids in Control of Aphis and Other Insect Pests

For Sale by the Best Dealers!

**ASSOCIATED OIL CO.**

AVON OILS For Sale By **HARRY HELLER**

Warehouse Opposite Freight Depot

Phone 449-J or write to 138 2nd Ave. North for information regarding first class auto-battery repair work.

**Auto Electric Service**

MY WIFE KEEPS CALLING ME "OLD PUT-IT-OFF-SKI!"

Control SCALE and LEAF ROLLER EGGS

Protect Your Orchard and Insure This Year's Crop by Spraying NOW with...

AVON 100 EMULSIFINE THE ORIGINAL FLUID EMULSIFIED OIL SPRAY

Also Aids in Control of Aphis and Other Insect Pests

For Sale by the Best Dealers!

**ASSOCIATED OIL CO.**

AVON OILS For Sale By **HARRY HELLER**

Warehouse Opposite Freight Depot

Phone 449-J or write to 138 2nd Ave. North for information regarding first class auto-battery repair work.

**Auto Electric Service**

MY WIFE KEEPS CALLING ME "OLD PUT-IT-OFF-SKI!"

Control SCALE and LEAF ROLLER EGGS

Protect Your Orchard and Insure This Year's Crop by Spraying NOW with...

AVON 100 EMULSIFINE THE ORIGINAL FLUID EMULSIFIED OIL SPRAY

Also Aids in Control of Aphis and Other Insect Pests

For Sale by the Best Dealers!

**ASSOCIATED OIL CO.**

AVON OILS For Sale By **HARRY HELLER**

Warehouse Opposite Freight Depot

Phone 449-J or write to 138 2nd Ave. North for information regarding first class auto-battery repair work.

**Auto Electric Service**

MY WIFE KEEPS CALLING ME "OLD PUT-IT-OFF-SKI!"

Control SCALE and LEAF ROLLER EGGS

Protect Your Orchard and Insure This Year's Crop by Spraying NOW with...

AVON 100 EMULSIFINE THE ORIGINAL FLUID EMULSIFIED OIL SPRAY

Also Aids in Control of Aphis and Other Insect Pests

For Sale by the Best Dealers!

**ASSOCIATED OIL CO.**

AVON OILS For Sale By **HARRY HELLER**

Warehouse Opposite Freight Depot

Phone 449-J or write to 138 2nd Ave. North for information regarding first class auto-battery repair work.

**Auto Electric Service**

MY WIFE KEEPS CALLING ME "OLD PUT-IT-OFF-SKI!"

Control SCALE and LEAF ROLLER EGGS

Protect Your Orchard and Insure This Year's Crop by Spraying NOW with...

AVON 100 EMULSIFINE THE ORIGINAL FLUID EMULSIFIED OIL SPRAY

Also Aids in Control of Aphis and Other Insect Pests

For Sale by the Best Dealers!

**ASSOCIATED OIL CO.**

AVON OILS For Sale By **HARRY HELLER**

Warehouse Opposite Freight Depot

Phone 449-J or write to 138 2nd Ave. North for information regarding first class auto-battery repair work.

**Auto Electric Service**

MY WIFE KEEPS CALLING ME "OLD PUT-IT-OFF-SKI!"

Control SCALE and LEAF ROLLER EGGS

Protect Your Orchard and Insure This Year's Crop by Spraying NOW with...

AVON 100 EMULSIFINE THE ORIGINAL FLUID EMULSIFIED OIL SPRAY

Also Aids in Control of Aphis and Other Insect Pests

For Sale by the Best Dealers!

**ASSOCIATED OIL CO.**

AVON OILS For Sale By **HARRY HELLER**

Warehouse Opposite Freight Depot

Phone 449-J or write to 138 2nd Ave. North for information regarding first class auto-battery repair work.

**Auto Electric Service**

MY WIFE KEEPS CALLING ME "OLD PUT-IT-OFF-SKI!"

Control SCALE and LEAF ROLLER EGGS

Protect Your Orchard and Insure This Year's Crop by Spraying NOW with...

AVON 100 EMULSIFINE THE ORIGINAL FLUID EMULSIFIED OIL SPRAY

Also Aids in Control of Aphis and Other Insect Pests

For Sale by the Best Dealers!

**ASSOCIATED OIL CO.**

AVON OILS For Sale By **HARRY HELLER**

Warehouse Opposite Freight Depot

Phone 449-J or write to 138 2nd Ave. North for information regarding first class auto-battery repair work.

**Auto Electric Service**

MY WIFE KEEPS CALLING ME "OLD PUT-IT-OFF-SKI!"

Control SCALE and LEAF ROLLER EGGS

Protect Your Orchard and Insure This Year's Crop by Spraying NOW with...

AVON 100 EMULSIFINE THE ORIGINAL FLUID EMULSIFIED OIL SPRAY

Also Aids in Control of Aphis and Other Insect Pests

For Sale by the Best Dealers!

**ASSOCIATED OIL CO.**

AVON OILS For Sale By **HARRY HELLER**

Warehouse Opposite Freight Depot

Phone 449-J or write to 138 2nd Ave. North for information regarding first class auto-battery repair work.

**Auto Electric Service**

MY WIFE KEEPS CALLING ME "OLD PUT-IT-OFF-SKI!"

Control SCALE and LEAF ROLLER EGGS

Protect Your Orchard and Insure This Year's Crop by Spraying NOW with...

AVON 100 EMULSIFINE THE ORIGINAL FLUID EMULSIFIED OIL SPRAY

Also Aids in Control of Aphis and Other Insect Pests

For Sale by the Best Dealers!

**ASSOCIATED OIL CO.**

AVON OILS For Sale By **HARRY HELLER**

Warehouse Opposite Freight Depot

Phone 449-J or write to 138 2nd Ave. North for information regarding first class auto-battery repair work.

**Auto Electric Service**

MY WIFE KEEPS CALLING ME "OLD PUT-IT-OFF-SKI!"

Control SCALE and LEAF ROLLER EGGS

Protect Your Orchard and Insure This Year's Crop by Spraying NOW with...

AVON 100 EMULSIFINE THE ORIGINAL FLUID EMULSIFIED OIL SPRAY

Also Aids in Control of Aphis and Other Insect Pests

For Sale by the Best Dealers!

**ASSOCIATED OIL CO.**

AVON OILS For Sale By **HARRY HELLER**

Warehouse Opposite Freight Depot

Phone 449-J or write to 138 2nd Ave. North for information regarding first class auto-battery repair work.

**Auto Electric Service**

MY WIFE KEEPS CALLING ME "OLD PUT-IT-OFF-SKI!"</

THIS CURIOUS WORLD By William Ferguson



DOGS ARE NATIVE AMERICANS! THE EARLIEST FOSSIL MEMBERS OF THE "DOG" FAMILY ARE FOUND IN THIS COUNTRY.

THE DAISY FAMILY, WITH MORE THAN 11,000 MEMBERS, BEING ALMOST ENTIRELY DOMESTIC, ARE USED FOR FERTILIZATION.

Insects, more than any other animal life have been given the task of cross-fertilizing flowers, although humming birds and bats perform the job frequently. Even man has been known to carry pollen.

SIDE GLANCES By George Clark

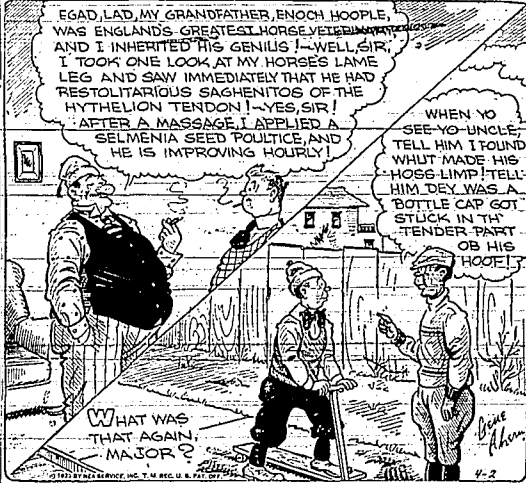


"Let's stay on another week or two and, if your sister still hints that they're getting tired of us, we can get mad and leave."

Napoleon's Wife

- Horizontal: 1 Second wife of Napoleon. 2 ... 3 ... 4 ... 5 ... 6 ... 7 ... 8 ... 9 ... 10 ... 11 ... 12 ... 13 ... 14 ... 15 ... 16 ... 17 ... 18 ... 19 ... 20 ... 21 ... 22 ... 23 ... 24 ... 25 ... 26 ... 27 ... 28 ... 29 ... 30 ... 31 ... 32 ... 33 ... 34 ... 35 ... 36 ... 37 ... 38 ... 39 ... 40 ... 41 ... 42 ... 43 ... 44 ... 45 ... 46 ... 47 ... 48 ... 49 ... 50 ... 51 ... 52 ... 53 ... 54 ... 55 ... 56 ... 57 ... 58 ... 59 ... 60 ... 61 ... 62 ... 63 ... 64 ... 65 ... 66 ... 67 ... 68 ... 69 ... 70 ... 71 ... 72 ... 73 ... 74 ... 75 ... 76 ... 77 ... 78 ... 79 ... 80 ... 81 ... 82 ... 83 ... 84 ... 85 ... 86 ... 87 ... 88 ... 89 ... 90 ... 91 ... 92 ... 93 ... 94 ... 95 ... 96 ... 97 ... 98 ... 99 ... 100 ... Vertical: 1 ... 2 ... 3 ... 4 ... 5 ... 6 ... 7 ... 8 ... 9 ... 10 ... 11 ... 12 ... 13 ... 14 ... 15 ... 16 ... 17 ... 18 ... 19 ... 20 ... 21 ... 22 ... 23 ... 24 ... 25 ... 26 ... 27 ... 28 ... 29 ... 30 ... 31 ... 32 ... 33 ... 34 ... 35 ... 36 ... 37 ... 38 ... 39 ... 40 ... 41 ... 42 ... 43 ... 44 ... 45 ... 46 ... 47 ... 48 ... 49 ... 50 ... 51 ... 52 ... 53 ... 54 ... 55 ... 56 ... 57 ... 58 ... 59 ... 60 ... 61 ... 62 ... 63 ... 64 ... 65 ... 66 ... 67 ... 68 ... 69 ... 70 ... 71 ... 72 ... 73 ... 74 ... 75 ... 76 ... 77 ... 78 ... 79 ... 80 ... 81 ... 82 ... 83 ... 84 ... 85 ... 86 ... 87 ... 88 ... 89 ... 90 ... 91 ... 92 ... 93 ... 94 ... 95 ... 96 ... 97 ... 98 ... 99 ... 100 ...

OUR BOARDING HOUSE By Ahern



EGAD, LAD, MY GRANDFATHER, ENOCH HOOPLE, WAS ENGLAND'S GREATEST HORSE VETERINARIAN AND I INHERITED HIS GENIUS! WELL, SIR, I TOOK ONE LOOK AT MY HORSE'S LAME LEG AND SAW IMMEDIATELY THAT HE HAD RESTOLITARIOUS SAGHENITOS OF THE HYTHELION TENDON! YES, SIR! AFTER A MASSAGE, I APPLIED A SELMENIA SEED POLTICE, AND HE IS IMPROVING HOURLY!

WHEN YOU SEE-YO UNCLE, TELL HIM I FOUND WHUT MADE HIS HOSS LIMP! TELL HIM, DEY WAS A BOTTLE CAP GOT STUCK IN TH' TENDER PART OF HIS HOOP!

WHAT WAS THAT AGAIN, MAJOR?

OUR OUR WAY By Williams

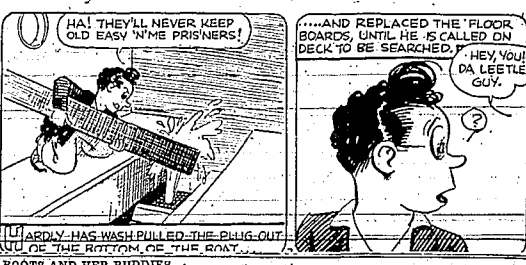


WES, BRINGIN' A COT, MAKES ME WONDER WHY IT IS TARANTULAS AN' RATTLESNAKES AN' SUCH, LIKE TO SLEEP UP OFF TH' GROUND, THER ALLERS AGITIN' UP ONTO SOMETHIN'!

YOU GO TO SLEEP WES, THEY'D MUCH PREFER TO GO IN A HOLE AN' THER'S ONE AROUND HERE ALLERS OPEN.

THE HIGH BOY.

WASH TUBS



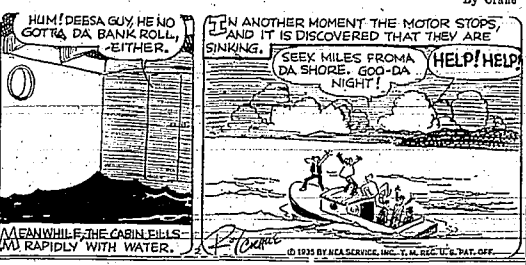
HA! THEY'LL NEVER KEEP OLD EASY 'N ME PRISONERS!

...AND REPLACED THE FLOOR BOARDS, UNTIL HE IS CALLED ON DECK TO BE SEARCHED. HEY YOU! DA LITTLE GUY.

HEARDY HAS WASH PULLED THE PLUG OUT SUCE OF THE BOTTOM OF THE TUB.

MEANWHILE, THE CABIN FILLS UP RAPIDLY WITH WATER.

By Crane

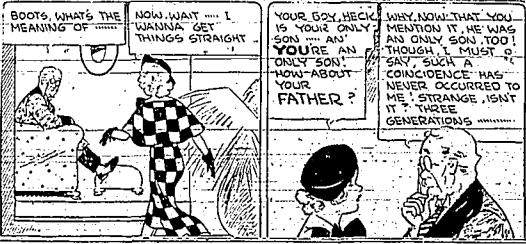


HUM! DEESA GUY, HE NO GOTTA DA BANK ROLL, EITHER.

IN ANOTHER MOMENT THE MOTOR STOPS, SINKING. SEEK MILES FROM DA SHORE, GOD-DA NIGHT!

HELP! HELP!

ROOTS AND HER BUDDIES



BOOTS, WHAT'S THE MEANING OF 'WASHING' DA THINGS STRAIGHT?

NOW, WAIT! YOU'RE AN ONLY SON, 'N YOU'VE GOT 'N ABOUT YOUR FATHER?

YOUR BOY, HECK! HEARTEN IF HE WAS AN ONLY SON, TOO! THOUGH, I MUST SAY, SUCH A CONVICENCE HAS NEVER OCCURRED TO ME. STRANGE, ISN'T IT? THREE GENERATIONS.

BUT, WHY ARE YOU NEVER MIND! NOW, YOUR GRANDPA WAS ME AN ONLY SON, TOO?

WHY? I REALLY COULDN'T SAY 'N I HAVE TO! DONCHA HAVE NO GAWN O' FAMILY ASKING AROUND OR SOMETHIN'?

JUS, HAVE T KNOW.

By Martin



IF WE CAN'T STOP 'N LEMMANS, WERE SUNK UNLESS COOLA CAN GET DINNY BACK HERE RIGHT QUICK! THAT BOOZ DINNY!

SAVE YER BREATH, WE ARE GONNA NEED IT, ALENTY!

THERE'S ONE WE DON'T HAFTA WORRY ABOUT ANYMORE.

STOP, DINNY, YOU OLD FOOL - STOP!

ALLEY OOP



HEY, JOE, GIMME A QUICK BREAKFAST, I'M LATE FOR WORK! ALREADY! MAKE IT A HALFA GRAPEFRUIT, TO START WITH!

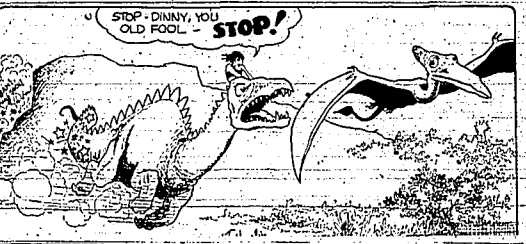
ONE GRAPEFRUIT, FER SAMMY? HOWDY!

WELL, SAMMY, DIDJA FIND TH' GRAPEFRUIT NICE AND JUICY?

TAKE A LOOK!

YOU CAN READ THE ANSWER IN MY EYE!

By Hamilton



DO YOU THINK THEY GOT YER FLASHES?

YES, SIR! FRECKLES HAS STOPPED THE CAR, AND THE MAN IS STANDING WITH HIS HANDS UP!

WHAT ARE THEY SAYIN' NOW?

THEY CAN'T LAND AND THEY WANT YOU BROUGHT IN ALIVE! GIVE 'EM YOUR GUN!!

IT WON'T DO YOU NO GOOD, IF WE LOADED IN THE FIRST PLACE! THEY'RE SENDIN' ANOTHER MESSAGE!

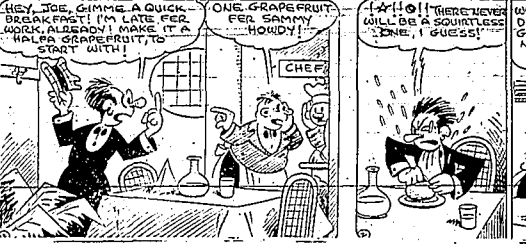
OH OH!

WHAT ARE THEY SAYIN' THIS TIME?

I'LL TELL YOU WHEN YOU WAKE UP!!

POP!

By Small

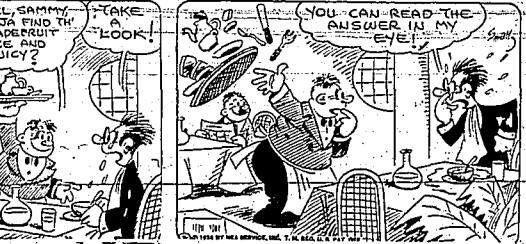


WELL, SAMMY, DIDJA FIND TH' GRAPEFRUIT NICE AND JUICY?

TAKE A LOOK!

YOU CAN READ THE ANSWER IN MY EYE!

By Blosser



DO YOU THINK THEY GOT YER FLASHES?

YES, SIR! FRECKLES HAS STOPPED THE CAR, AND THE MAN IS STANDING WITH HIS HANDS UP!

WHAT ARE THEY SAYIN' NOW?

THEY CAN'T LAND AND THEY WANT YOU BROUGHT IN ALIVE! GIVE 'EM YOUR GUN!!

IT WON'T DO YOU NO GOOD, IF WE LOADED IN THE FIRST PLACE! THEY'RE SENDIN' ANOTHER MESSAGE!

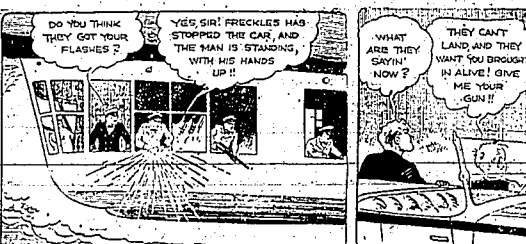
OH OH!

WHAT ARE THEY SAYIN' THIS TIME?

I'LL TELL YOU WHEN YOU WAKE UP!!

POP!

By Blosser



DO YOU THINK THEY GOT YER FLASHES?

YES, SIR! FRECKLES HAS STOPPED THE CAR, AND THE MAN IS STANDING WITH HIS HANDS UP!

WHAT ARE THEY SAYIN' NOW?

THEY CAN'T LAND AND THEY WANT YOU BROUGHT IN ALIVE! GIVE 'EM YOUR GUN!!

IT WON'T DO YOU NO GOOD, IF WE LOADED IN THE FIRST PLACE! THEY'RE SENDIN' ANOTHER MESSAGE!

OH OH!

WHAT ARE THEY SAYIN' THIS TIME?

I'LL TELL YOU WHEN YOU WAKE UP!!

POP!

By Blosser



DO YOU THINK THEY GOT YER FLASHES?

YES, SIR! FRECKLES HAS STOPPED THE CAR, AND THE MAN IS STANDING WITH HIS HANDS UP!

WHAT ARE THEY SAYIN' NOW?

THEY CAN'T LAND AND THEY WANT YOU BROUGHT IN ALIVE! GIVE 'EM YOUR GUN!!

IT WON'T DO YOU NO GOOD, IF WE LOADED IN THE FIRST PLACE! THEY'RE SENDIN' ANOTHER MESSAGE!

OH OH!

WHAT ARE THEY SAYIN' THIS TIME?

I'LL TELL YOU WHEN YOU WAKE UP!!

POP!





G. O. P. MAPPING FARMERS' ISSUE

Vandenberg Charts Plans for Assault on Agricultural Status in U. S.

By LYLE C. WILSON WASHINGTON, April 2 (AP)—Republican political strategists are preparing a timely agricultural issue ready for discussion when mid-west party leaders meet next month to plan 1936 presidential strategy.

Senator Arthur Vandenberg, R-Mich., himself a presidential possibility, is gathering material although he will not participate in the mid-west meeting.

Acts on Hoover Tip Acting as a liaison between President Hoover's recent indictment of the New Deal, Vandenberg obtained Senate action on a resolution calling for information on recent agricultural imports and the comparative production and consumption of cotton and wheat by all nations from 1924 to 1932.

From this data there probably ultimately will be shaped platform planks challenging the New Deal on: 1. High cost of living 2. Allegedly discriminating foreign and domestic markets for American agriculture 3. The Roosevelt tariff bargaining policy.

No Dispute There is no dispute about the increase of living costs. President Roosevelt has recognized the trend. Early this year he told conferees the cost of living was expected to continue higher in the general readjustment of dollar purchasing power.

Whether the American farmer market is being diminished and if so why is a subject of bitter argument. Republican complaint that the farmer is being squeezed out of natural markets at home and more competitive markets abroad.

Former President Hoover raised the issue of agricultural imports in his March 23 letter challenging New Deal policies to generalists.

Because of food destruction and restraint on farm production, foreign food is pouring into our ports, purchase of which should have been made from our farmers. Cost of this food is being paid by the consumer.

Death Blamed The agricultural administration disclaimer insisted that from July, 1934, to February, 1935, total imports of all commodities were 13.7 per cent less than the 1924-1930 average.

The A. A. A. congress has increased imports but attributed the increase to drought. The A. A. A. congress reported for the July-February period a 25 per cent increase in agricultural imports. The A. A. A. said 1,275,000 bushels of those grains had been destroyed by drought.

Imports were insignificant compared with production and consumption. Officials said corn exports exceeded imports any way.

VIE FOR TWO CITY POSITIONS



LEM A. CHAPIN



W. E. TAYLOR



E. A. LANDON



H. H. HEDSTROM



HAROLD C. HOWELL

Five candidates are being voted upon today for the positions to become vacant on Twin Falls city council due to expiration of the terms of Commissioners Chapin and J. E. White, the latter is not a candidate for re-election. To be elected today two will have to secure clear majorities, or a runoff election will be necessary. The successful pair will serve four-year terms.

MAN CONFESSES DOUBLE-SLAYING

Autopsy Leads to Arrest for Killing Mother-in-Law And Girl, 18

NEW YORK, April 2 (AP)—A double murder, so dutifully executed, failed to excite the police until an autopsy revealed the two women victims had been criminally assaulted when killed.

An ex-army man of 14 years service, confessed killing his 70-year-old mother-in-law and her granddaughter, 18, in their home Sunday night. The victim were Mrs. Nora Kelly and Miss Florence McVey.

The confession was made by Thomas McFarland, 30. He told of going to the home of Mrs. Kelly about 8 o'clock Sunday night. He said he had a bottle of sherry wine and his drinking led to a quarrel. "Mrs. Kelly and I were in the kitchen," the confession said. "I pushed her on the couch in the parlor. Mrs. Kelly railed a chair. She was going to strike me with a spooning when I took her. I have a faint recollection of clothing her."

"I remember that the girl started for the kitchen. She said, 'What you have done?' Mrs. Kelly had fallen when I choked her. There was a knife on the kitchen table. I was afraid the girl was making for that knife. I knew that she knew what I had done, so I grabbed her and choked her until she was unconscious. I carried her back to the living room. She was conscious then. I went back to the kitchen and carried Mrs. Kelly down to the cellar."

Choking Her Mother Mrs. Kelly's body was found hanging from a meter. Inmate was found around her neck and fixed to the beam overhead. This was the position in which police found the body after a whining dog prompted a neighbor to investigate.

The girl's body lay in front of a sofa, her clothing neatly arranged.

There were no marks or bruises on her body and she appeared as if she had died while sleeping.

BUHL

The Grand Strata Bridge club Thursday afternoon with Mrs. Gerald S. Laidlaw, club guests were Mrs. Ormsd Thomas and Mrs. Harrin Mrs. Wayne Hudson and Mrs. Thomas received. Prizes Mrs. J. J. Hugg will entertain April 11. Eugene O'Connell and His Gang will be the subject of a paper given Wednesday by Mrs. Carl Curtis at the Monitor club meeting held at the home of Mrs. Charles Sherman.

OPPOSNENTS FOR JOB AS MAYOR



BRIT A. SWEET



MAYOR JOHNSON

Twin Falls will elect a mayor today, there being but two candidates, thus eliminating any possibility of another election for these posts as was the case two years ago. Opposing Mayor Johnson for re-election for a two-year term, is Brit A. Sweet, merchant.

Congress Today

(By United Press) SENATE Debates Copeland food and drug bill. HOUSE Considers private calendar bills.

ADA LEADS IERA ROLLS IN IDAHO

Total of 101,631 Receiving Help Throughout State, Thompson Says

BOISE, April 2 (AP)—Ada county leads the 44 Idaho counties in the number of people registered on I. E. R. A. rolls.

Of the 49,000 Idaho residents, 101,631 are receiving assistance from the Idaho emergency relief administration, Raymond Thompson, I. E. R. A. public relations officer, announced yesterday.

Of the total number of persons on the relief rolls, 4,700 are non-residents. These people are entitled to federal transient service only. Under I. E. R. A. regulations, county citizens committees are responsible for the number on relief rolls in each county. They have the power either to remove their names or add to the rolls. Thompson said.

GRANGE MEETS

PAUL, April 2 (Special)—West of Idaho Grange met Thursday for a program on wheat and flour. Present were W. Brandt, of the Burley and Miss Chelonia. Missions Mr. Kuhns, wheat and flour agent, spoke on a new personality in wheat being produced in Russia and explained the wheat acreage. Present were Mrs. C. Cronin, Loyola Mrs. LaPrade, Moon were present. Mrs. LaPrade, Moon were present. Refreshments were served by Mrs. Olin and Mrs. Cityville.

PLAN RITES FOR 'CAP' KIMBROUGH

Services for Buhl Area Man Victim of Crash Await Texas Relatives

Funeral services are being arranged for Corrie M. Kimbrough, 60, generally known as 'Cap,' resident of Buhl district, who died shortly after midnight at the hospital. Death was due to pneumonia following injuries sustained in an automobile accident on the highway south and east of Lapwai.

At his bedside when death came were his brother, Alex Kimbrough, Buhl, and Mrs. Alex Kimbrough. Since 1911 he had made his home in Lapwai.

Mr. Kimbrough came to Buhl in 1920 with his brother. He continued his work in sheep business in which he had been engaged in Texas and Montana. He was born in Alabama.

The body rests at the Evans and Johnson funeral home in Buhl.

Funeral services will be held at 2 o'clock in the afternoon at the Evans and Johnson funeral home in Buhl.

Funeral services will be held at 2 o'clock in the afternoon at the Evans and Johnson funeral home in Buhl.

Funeral services will be held at 2 o'clock in the afternoon at the Evans and Johnson funeral home in Buhl.

Funeral services will be held at 2 o'clock in the afternoon at the Evans and Johnson funeral home in Buhl.

Funeral services will be held at 2 o'clock in the afternoon at the Evans and Johnson funeral home in Buhl.

Funeral services will be held at 2 o'clock in the afternoon at the Evans and Johnson funeral home in Buhl.

Funeral services will be held at 2 o'clock in the afternoon at the Evans and Johnson funeral home in Buhl.

Funeral services will be held at 2 o'clock in the afternoon at the Evans and Johnson funeral home in Buhl.

Funeral services will be held at 2 o'clock in the afternoon at the Evans and Johnson funeral home in Buhl.

Funeral services will be held at 2 o'clock in the afternoon at the Evans and Johnson funeral home in Buhl.

Funeral services will be held at 2 o'clock in the afternoon at the Evans and Johnson funeral home in Buhl.

Funeral services will be held at 2 o'clock in the afternoon at the Evans and Johnson funeral home in Buhl.

Funeral services will be held at 2 o'clock in the afternoon at the Evans and Johnson funeral home in Buhl.

Funeral services will be held at 2 o'clock in the afternoon at the Evans and Johnson funeral home in Buhl.

Funeral services will be held at 2 o'clock in the afternoon at the Evans and Johnson funeral home in Buhl.

Funeral services will be held at 2 o'clock in the afternoon at the Evans and Johnson funeral home in Buhl.

Funeral services will be held at 2 o'clock in the afternoon at the Evans and Johnson funeral home in Buhl.

Funeral services will be held at 2 o'clock in the afternoon at the Evans and Johnson funeral home in Buhl.

Funeral services will be held at 2 o'clock in the afternoon at the Evans and Johnson funeral home in Buhl.

Funeral services will be held at 2 o'clock in the afternoon at the Evans and Johnson funeral home in Buhl.

Funeral services will be held at 2 o'clock in the afternoon at the Evans and Johnson funeral home in Buhl.

Funeral services will be held at 2 o'clock in the afternoon at the Evans and Johnson funeral home in Buhl.

Funeral services will be held at 2 o'clock in the afternoon at the Evans and Johnson funeral home in Buhl.

Funeral services will be held at 2 o'clock in the afternoon at the Evans and Johnson funeral home in Buhl.

Funeral services will be held at 2 o'clock in the afternoon at the Evans and Johnson funeral home in Buhl.

Public Forum

Contributions from readers welcomed. Letters should deal with matters of general interest. Should not extend to more than 500 words. Preferred letters should be confined to 100. No contributions accepted unless addressed to the editor of the public forum. All letters will be used if specifically requested. Contributions should be submitted to the editor of the public forum. All letters should be addressed to the editor of the public forum.

Editor, Evening Times Dear Sir: We have been reading the interesting articles published in the forum columns of both Twin Falls papers, touching things that are vital to the welfare of the public. I wish to add my testimony to that already presented for "much has been said, and less printed about the failure of the present incumbent of the mayoralty to fulfill his obligations of that office as regards the welfare of the citizen."

Someone about one year ago my son was working on the I. E. R. A. relief work. He was full of enthusiasm and was unable to feel himself. He was getting two children ready for school, caring for two more under school age, and was doing a great deal of work to help. There was taken suddenly with pneumonia and doctor ordered them to be practical nurse, so I appealed to about three of the county relief officials. They had no nurse who could read. How much could I pay, provided they could find one? Disputed but not discouraged I saw Mayor M. D. Johnson and told the case before him. In less than 20 minutes he had a party on the wire and then told me to go home and a nurse would be there in an hour. I waited the 10 blocks and when I reached the house the investigator had been there and in a few minutes the nurse arrived and soon had things running on schedule. What we needed was action not excuse, but our needs were supplied. This may seem to some a small affair, but to ones, meeting help, it is a real mountain rolled out of their path. We speak of that which we know, and testify of those things we have seen. And hope that his good work may continue to have opportunity to express itself. If the majority rather otherwise, we say to the successful one, "Go thus and do likewise." The well and wealthy need no helpers.

Twin Falls, Idaho, April 2, 1935.

Start your baby chicks on Globe A-1 starter. It's better. Globe Seed & Feed Co.—Adv.

Start your baby chicks on Globe A-1 starter. It's better. Globe Seed & Feed Co.—Adv.

Start your baby chicks on Globe A-1 starter. It's better. Globe Seed & Feed Co.—Adv.

Start your baby chicks on Globe A-1 starter. It's better. Globe Seed & Feed Co.—Adv.

Start your baby chicks on Globe A-1 starter. It's better. Globe Seed & Feed Co.—Adv.

Start your baby chicks on Globe A-1 starter. It's better. Globe Seed & Feed Co.—Adv.

Start your baby chicks on Globe A-1 starter. It's better. Globe Seed & Feed Co.—Adv.

Start your baby chicks on Globe A-1 starter. It's better. Globe Seed & Feed Co.—Adv.

Start your baby chicks on Globe A-1 starter. It's better. Globe Seed & Feed Co.—Adv.

Start your baby chicks on Globe A-1 starter. It's better. Globe Seed & Feed Co.—Adv.

Start your baby chicks on Globe A-1 starter. It's better. Globe Seed & Feed Co.—Adv.

Start your baby chicks on Globe A-1 starter. It's better. Globe Seed & Feed Co.—Adv.

Start your baby chicks on Globe A-1 starter. It's better. Globe Seed & Feed Co.—Adv.

Start your baby chicks on Globe A-1 starter. It's better. Globe Seed & Feed Co.—Adv.

Start your baby chicks on Globe A-1 starter. It's better. Globe Seed & Feed Co.—Adv.

Start your baby chicks on Globe A-1 starter. It's better. Globe Seed & Feed Co.—Adv.

Start your baby chicks on Globe A-1 starter. It's better. Globe Seed & Feed Co.—Adv.

Start your baby chicks on Globe A-1 starter. It's better. Globe Seed & Feed Co.—Adv.

Start your baby chicks on Globe A-1 starter. It's better. Globe Seed & Feed Co.—Adv.

Start your baby chicks on Globe A-1 starter. It's better. Globe Seed & Feed Co.—Adv.

Start your baby chicks on Globe A-1 starter. It's better. Globe Seed & Feed Co.—Adv.

Start your baby chicks on Globe A-1 starter. It's better. Globe Seed & Feed Co.—Adv.

Start your baby chicks on Globe A-1 starter. It's better. Globe Seed & Feed Co.—Adv.

Start your baby chicks on Globe A-1 starter. It's better. Globe Seed & Feed Co.—Adv.

Start your baby chicks on Globe A-1 starter. It's better. Globe Seed & Feed Co.—Adv.

ADOLPHE MENJOU CRITICALLY SICK

Screen Luminary In Hospital From Serious Attack of Influenza

(Copyright, 1935, United Press) HOLLYWOOD, April 2 (AP)—Adolph Menjou, who was reported serious in a hospital here today where he is suffering from influenza.

Only the screen star's wife, Verree Teasdale, also a film luminary, was allowed to enter the hospital room. Menjou was stricken several days ago, but his condition did not become serious until yesterday.

Ginger Rogers, blond screen actress, prepared today to file an answer to a suit which charges she owes Nat C. Goldstone, actors' agent, \$2,750 in commissions.

Goldstone charged that she had not agent, but received no commissions on the picture. She said she had earned \$27,425 since that time and owes him 10 per cent of the amount.

Attorneys for the actress said they would file an answer in five days.

Jack Oakie, moon-faced, wisecracking film comedian, today faced a suit for \$50,000 damages as a result of an automobile collision.

F. H. Conspack signed the complaint charging he was partially injured when Oakie's car struck his machine. He also alleged the actor was "in an intoxicated condition."

Zasu Pitts doesn't like jewelry. She stormed around a studio lot all day today when a reporter tried to dress her up in dazzling gems for a new picture.

Miss Pitts scolded, but insisted she wasn't displaying temperment—just a natural aversion to jewelry.

The director was skeptical until the actress informed him that she has never worn a wedding ring, although she has been married twice.

HANSEN CLUB MEETS HANSEN, April 2 (Special)—Mr. and Mrs. A. L. Hansen entertained the T. K. H. pinocle club at the final party of the year at their home.

Advertisement for Lucky Strike cigarettes. Text: "I'm your best friend I am your Lucky Strike". Features a pack of Lucky Strike cigarettes and a list of benefits: "- to anxiety - - I bring relief", "- to distress - - I bring courage", "- to achievement - - I bring content", "- to loneliness - - I bring companionship". Includes the slogan "LUCKIES USE ONLY THE CENTER LEAVES. CENTER LEAVES GIVE YOU THE MILDDEST SMOKE".