











# Celebrating Our 3rd BIRTHDAY

## THURS., FRI., and SAT., ONLY

Thanks, folks, for your generous patronage these past seasons—we'll strive to merit its continuance. Celebrating our third birthday in this new store, we're cutting prices—instead of cake—and inviting you to

Share in the Savings

**FREE**—Noise makers for little boys and Shirley Temple books for little girls accompanied by grown-ups

**Special Purchase**  
Regular \$25.00

### Fleece Coats

- Hollywood Style
- Man Tailored
- Western Woolens
- Guaranteed Linings

## \$16.95

Hollywood style wrap-around fleece coats are particularly fashion right—average bodied models with clever sleeve treatments—man tailored with linings guaranteed for the life of the garment. These are practical—serviceable and style-right. Sizes 12 to 20. Oxford—Navy—Steel.

**New Fall Frocks**  
**\$4.85**

Just 100 new frocks in smart wools, silks and novelty fabrics and in sizes 12 to 22. Don't miss these **\$4.85**



Everyone a real Money Saver



# Sale!

### 54 in. Fine Woolens

54-in. dress and suiting wools, including wool crepe, flannels and novelty fabrics.  
**\$1.19** Yard

**Finer Silks**  
Special group of 58c printed crepes, plain crepes and plain satins. 39 inches wide.  
**67c** Yard

**Free Monogramming**  
THURSDAY - FRIDAY AND SATURDAY ONLY!  
We'll monogram sheets, towels, shirts, etc. free. Select holiday gifts now and have them monogrammed!

### Cannon Towels

Large size bath towels, double thread, all white with pastel borders.  
**25¢**

### Cannon Fine Muslin Sheets

Famous Cannon sheets of fine count muslin. Guaranteed for four years wear, household use. Cellulose wrapped.

63 x 108	\$1.09 Each
72 x 108	\$2.10 Fair
81 x 99	\$1.19 Fair
81 x 108	\$1.19 Each
	\$2.25 Fair

Monogrammed Free!

### Solid Color Blankets

Warm pastel blankets with tartan binding and guaranteed 25% wool.  
**\$3.49** Each

### Indian Blankets

Indian pattern blankets in fast color designs. Make fine throws and robes.  
**\$1.29** Each

### Men's Sheeplined Coats

Save now on these heavy fleece-lined coats. Made of serviceable khaki moleskin with woaded collar. They have 2 slash pockets and 2 deep flap covered pockets. Size 40 to 46. Regular \$8.95 value **\$3.95**

### Boys' and Youths' Suits

Coat, vest and 2 pair of pants. Pants are machine made. These are wool suits in tan and brown sport checks. Age 6 to 16. Regular \$7.95 value **\$3.00**

### Men's Work

Don't look any more for work clothes. We've sorted and shopped for you in this group of men's work clothes. They are made of the best materials and are guaranteed to last.

### Fruit of the Loom Wash Frocks

Smartly Styled

Wash frocks of genuine Fruit of the Loom fine count prints in colorful fall shades and styles. Guaranteed as advertised in Good Housekeeping magazine. Sizes 14 to 44 **\$1.00**

### 81 x 99 Pequot Sheets

Genuine Pequot fine count muslin sheets in large double bed size **\$1.00**  
MONOGRAMMED FREE

### Part Wool BLANKETS

Medium weight part wool double blankets in large size. Pastel plaids bound with matching satin. Pair **\$1.49**

### Celanese Taffeta Down Filled Quilts

Luxurious quilts of pure dye celanese taffeta and generously filled with white goose down **\$13.90**

### BOYS' CORD PANTS

Buff color cords that sell regularly at \$1.69, sizes 6 to 16—they'll go fast at **\$1.29**

### Men's Wool Shirts

Olive drab, army type  
Coat style with 2 flap button pockets. These sold regularly at \$2.49. Your choice **98c**  
Sizes 14-16 1/2-18

### Famous Make Dress Shirts

First quality 41-42 and 43-44 fine dress shirts from a nationally known manufacturer, specially priced for your birthday. White and tan **\$1.39**

### Ladies' Fur Trimmed Coats

These came in too late last season and we didn't sell them. They were marked from \$25.00 to \$40.00 but as there is a limited selection you can take your **\$10.00** choice at

### Fine Rayon Undies

These are discontinued numbers in Lorraine fine undies that sold at 49c and 59c. Panties and briefs. **35c**

### Ladies' Tuckstitch Undies

Sportswear and part wool union suits—flesh color only—these sold up to 69c. Your choice **39c**

### \$1.98 Bias Cut Slips

Special lot of fine silk french crepe slips in tailored or lace trim styles **\$1.29**

### 81x99 Muslin Sheets

Medium weight seamless sheets in double bed size. While they last **69c**

### Silkolone Covered Quilts

Well made cotton filled quilts—scroll attached and covered with flowered silkolone **\$2.99**

### \$1.98 Colonial Spreads

Cotton colonial spreads in double bed size. Good weight and fast colors **\$1.99**

### Plaid Sheet Blankets

Cotton plaid sheet blankets with attached edges. Each **49c**

### White Sheet Blankets

Fine white cotton sheet blankets—extra size. (Two) **79c**

### Blanket Lined Coats

220 weight down coats with warm blanket lining. Two deep pockets, set-in sleeves **\$1.19**



### Men's Socks

Serviceable work socks and fancy dress. Will go fast at the price **5c**  
—Limit 5 Pair—

### Special Group Men's Suits

**\$9.85**

Some \$15.00 student suits. A few suits we tried to get \$12.50 and \$27.00 for but couldn't. If your size is here you can surely get your money out of **\$9.85** them at

### One Group Fashion Park and Kuppenheimer Fine Suits

**\$18.85**

We are closing out these two lines. They were fairly good values at \$29.50 and \$39.50. Don't miss them. They go at **\$18.85**. They should give you that much service.

### Men's Heavy Union Suits

Made by Hanes. Long sleeve and ankle length with knitted cuffs and neck-piece. Sizes 36 to 50 **69c**

### Boys' Winter Union Suits

Boys unions with long sleeve, ankle length. Knitted cuffs and necktie. Sale priced at **49c**

### Men's Sweaters

They might be worth up to \$3.99 but our public doesn't think so. Large sizes in Manhattan, Barclay and McGregor. Slip-over styles **98c**

### Men's Flannel Shirts

Regular \$1.49 values. In grey, tan and blue-coat style with 2 button pocket. Value plus at **77c**

### Boys' Outing Pajamas

Kaynes and other well-known brands. Coat and slip-over styles. Values to \$1.29. **59c**

### Boys' Melton Jackets

Boys' Look! Melton canvas jackets with button front on 2 slash pockets. Sizes 12 to 16 **79c**

# Birthday Celebration SHOE VALUES

### Men's Calfskin Oxfords

Black calf oxfords in smooth and grain leathers with composition soles and rubber heels **\$1.69**

### Men's Police Shoes

All leather police shoes with water-proofed, full cowhide sole and wear-proof lining. Sizes 6 to 11 **\$2.69**

### BOYS' HI-TOP BOOTS

Well made in smooth and grain leathers with rubber heels. Sizes 6 to 11. **\$1.99**

### Women's Dress Shoes

A special group of pumps, straps and oxfords that formerly sold up to \$4.99, but not all sizes in each style **\$2.89**

Girls' School Shoes  
Brown and black with canvas tops and canvas vamp. Size 4 **\$1.89**

Children's School Shoes  
All leather uppers with composition soles. Brown, black, calf, patent leather. **89c**

## Golden Rule

TWIN FALLS







...SOCIETY...

You Are Invited to Telephone Your Social Items Phone 88 Before 10:35 P. M.

CLEVER MEETING GIVEN AT MEETING

Some of the members of the Star Social club staged a clever "Major Bowes" amateur hour program...

Calendar

The Catholic Women's league will meet tomorrow at 2:30 p. m. in the Legion Memorial hall...

FOURIER RESIDENTS FETTERED IN MOUNTAINS

Fourier residents in the mountains are fettered by the weather...

BOY SCOUT HEAD COMING SEPT. 28

Harold F. Pote of Personnel Department Will Meet With Council

ANNIVERSARY TO BE CELEBRATED

Mrs. and Mrs. C. G. Jennings are observing their 25th wedding anniversary on Sunday and friends may call from 10 a. m. to 4 p. m. at their home at 212 Elm street...

Warehouse Erected By Honey Producer

With the building of a new warehouse, the honey producer is erecting in Rupert by E. J. Parrow...

GRAZING DISTRICT'S ELECTION DATE SET

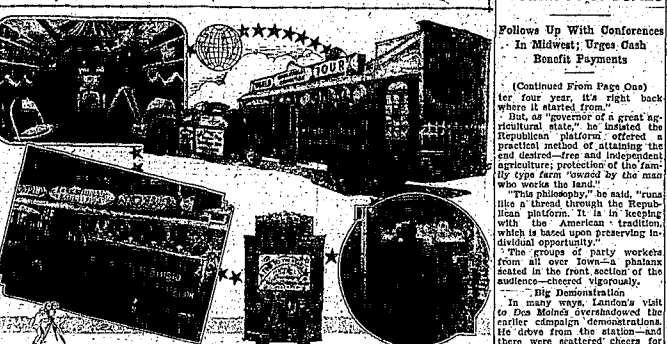
Annual election of district board members will take place at Boise at 10 a. m. on Oct. 12...

RETURN FROM BOISE

Mrs. and Mrs. Marshall Chapman and son, John, have returned from a brief visit in Boise.

Marian Martin Pattern advertisement featuring a woman's portrait and details about pattern 9168, including fabric requirements and pricing.

Traveling Motion Picture Studio Coming to Twin Falls Sept. 30th



Upper right exterior view of the Metro-Goldwyn-Mayer traveling motion picture studio on world tour... The studio is a complete mobile unit...

YEAR'S PROGRAM MAPPED BY ICYA

Council of Affiliation Launches Recreational Program For Coming Year... The executive council of the ICYA has mapped out a program...

SCREEN FIGURES PLAN MARRIAGE

HOLLYWOOD, Sept. 23 (U.P.)—The romance of Ann Southern, screen actress, and Roger Fry, actor and orchestra leader, has reached the stage where they expect to be married immediately...

ROGERSON

Mrs. Naomi March was in Rogerson today, having resigned the school she started teaching in...

You'll Like These...

Newkitts advertisement for women's clothing, featuring a woman's portrait and details about their 'Newkitts' brand.

Free From Worry HEAT

Stokermatic advertisement for a furnace, highlighting its efficiency and ease of use.

FLAPPER FANNY By Sylvia



But "says if I do his homework I can be his gun moll at school."

YOUNG DEMOCRAT MEET ANNOUNCED

Election of officers will feature a meeting of the Young Democrat club at the office of the probate court at 8 p. m. today...

TOO MUCH CASH

SALES LAXE CITY, Utah, Sept. 23 (U.P.)—Because Utah banks already have on deposit all the public funds they can handle, the state is losing interest on approximately \$2,000,000...

Used Car Sale advertisement for Bob Milner Sales Co., listing various car models and prices.





# You'll Find Real Opportunities in the CLASSIFIED ADS

## Classified Directory

Responsible Business Firms and Professional Offices of Twin Falls

**WANTED TO BUY**—1000 cars to wreck. Farmers Auto Supply, Used Parts Dept. Phone 225-10.

**Spot Cash for USED CARS** Jno. B. White 14 Second Ave. North

**APARTMENTS FOR RENT** Three-room furnished apt. Inquire 633 Second Ave. west.

**FOR RENT**—Clean, comfortable attractive apt. Our beds are place and heat. Call at Apt. 3, California Ave. 200 Second Ave. west.

**FOR RENT—ROOMS** Room, Turnkey heat. Phone 1206.

**HELP WANTED—MALE** 423 a week income, commission job. No experience necessary. Amitious man over 25, no experience or investment necessary. Write to Mr. W. J. Berry, 4548 Hollis St., Oakland, Calif.

**HELP WANTED—FEMALE** Competent woman or girl for general house work. Phone 441-1.

**HELP WANTED** New firm locating in city. Want 20 young men and women with mechanical aptitude. Write to Mr. W. J. Berry for appointment at Perrine Hotel.

**SITUATIONS WANTED** An experienced local carpenter now available. Phone 935.

**BUSINESS OPPORTUNITIES** For Sale—Grocery and meat market. No experience necessary. Good business. Good location. Cheap rent. Call Mr. W. J. Berry.

**FOR SALE—MISCELLANEOUS** For Sale—8x10 tape Wilton rug. Phone 964.

**FOR SALE—MISCELLANEOUS** Automobile Windshield and Glass. Phone 206.

**FOR SALE—MISCELLANEOUS** Automobile Windshield and Glass. Phone 206.

**FOR SALE—MISCELLANEOUS** Automobile Windshield and Glass. Phone 206.

**FOR SALE—MISCELLANEOUS** Automobile Windshield and Glass. Phone 206.

**FOR SALE—MISCELLANEOUS** Automobile Windshield and Glass. Phone 206.

**FOR SALE—MISCELLANEOUS** Automobile Windshield and Glass. Phone 206.

**FOR SALE—MISCELLANEOUS** Automobile Windshield and Glass. Phone 206.

**FOR SALE—MISCELLANEOUS** Automobile Windshield and Glass. Phone 206.

**FOR SALE—MISCELLANEOUS** Automobile Windshield and Glass. Phone 206.

**FOR SALE—MISCELLANEOUS** Automobile Windshield and Glass. Phone 206.

**FOR SALE—MISCELLANEOUS** Automobile Windshield and Glass. Phone 206.

**FOR SALE—MISCELLANEOUS** Automobile Windshield and Glass. Phone 206.

**FOR SALE—MISCELLANEOUS** Automobile Windshield and Glass. Phone 206.

**FOR SALE—MISCELLANEOUS** Automobile Windshield and Glass. Phone 206.

**FOR SALE—MISCELLANEOUS** Automobile Windshield and Glass. Phone 206.

**FOR SALE—MISCELLANEOUS** Automobile Windshield and Glass. Phone 206.

**FOR SALE—MISCELLANEOUS** Automobile Windshield and Glass. Phone 206.

**FOR SALE—MISCELLANEOUS** Automobile Windshield and Glass. Phone 206.

# Today's Markets and Financial News

## LIVESTOCK WHEAT DECLINES AFTER ADVANCE N. Y. STOCKS SOARING STOCKS EASE AT CLOSE

**NEW YORK, Sept. 23 (AP)—**The market closed irregularly. Alaska June 1938 17 1/2, Alaska July 1938 17 1/2, Alaska August 1938 17 1/2, Alaska September 1938 17 1/2.

**NEW YORK, Sept. 23 (AP)—**Wheat futures continued their advance in the night ground on active buying early in the morning. The Chicago board of trade bid fell to \$1.10 1/2; wheat steady to 15c to \$2.50.

**CHICAGO LIVESTOCK** Sept. 23 (AP)—Hog futures closed steady to 1/2c higher; average, heavy butchers \$10.30; light 10.20; pork 10.20; lard 10.20.

**GRAIN TABLE** Sept. 23 (AP)—Grain market closed steady to 1/2c higher; average, heavy butchers \$10.30; light 10.20; pork 10.20; lard 10.20.

**MARKETS AT A GLANCE** By United Press. Stocks irregular after rise to 3 1/2 points.

**Local Markets** 50c wheat, 50c corn, 50c soybeans. Choice light butchers, 16c. Choice heavy butchers, 15c.

**Butter, Eggs** Butter, extra 37c; prime firsts 36c; standard 35c. Eggs, large 34c; small 33c.

**Potatoes** Idaho Falls, 1.10 to 1.15. Idaho Falls, 1.10 to 1.15. Idaho Falls, 1.10 to 1.15.

**Wool** Merino, 1.00 to 1.10. Merino, 1.00 to 1.10. Merino, 1.00 to 1.10.

**Grain** Wheat, 1.10 to 1.15. Wheat, 1.10 to 1.15. Wheat, 1.10 to 1.15.

**Stocks** American Super, 24 1/2. American Super, 24 1/2. American Super, 24 1/2.

**Commodities** Sugar, 10.00 to 10.50. Sugar, 10.00 to 10.50. Sugar, 10.00 to 10.50.

**Metals** Copper, 1.00 to 1.10. Copper, 1.00 to 1.10. Copper, 1.00 to 1.10.

**Grain** Wheat, 1.10 to 1.15. Wheat, 1.10 to 1.15. Wheat, 1.10 to 1.15.

**Stocks** American Super, 24 1/2. American Super, 24 1/2. American Super, 24 1/2.

**Commodities** Sugar, 10.00 to 10.50. Sugar, 10.00 to 10.50. Sugar, 10.00 to 10.50.

**Metals** Copper, 1.00 to 1.10. Copper, 1.00 to 1.10. Copper, 1.00 to 1.10.

**Grain** Wheat, 1.10 to 1.15. Wheat, 1.10 to 1.15. Wheat, 1.10 to 1.15.

**Stocks** American Super, 24 1/2. American Super, 24 1/2. American Super, 24 1/2.

**Commodities** Sugar, 10.00 to 10.50. Sugar, 10.00 to 10.50. Sugar, 10.00 to 10.50.

**Metals** Copper, 1.00 to 1.10. Copper, 1.00 to 1.10. Copper, 1.00 to 1.10.

**Grain** Wheat, 1.10 to 1.15. Wheat, 1.10 to 1.15. Wheat, 1.10 to 1.15.

**Stocks** American Super, 24 1/2. American Super, 24 1/2. American Super, 24 1/2.

**Commodities** Sugar, 10.00 to 10.50. Sugar, 10.00 to 10.50. Sugar, 10.00 to 10.50.

**Metals** Copper, 1.00 to 1.10. Copper, 1.00 to 1.10. Copper, 1.00 to 1.10.

**Grain** Wheat, 1.10 to 1.15. Wheat, 1.10 to 1.15. Wheat, 1.10 to 1.15.

**Stocks** American Super, 24 1/2. American Super, 24 1/2. American Super, 24 1/2.

**Commodities** Sugar, 10.00 to 10.50. Sugar, 10.00 to 10.50. Sugar, 10.00 to 10.50.

**Metals** Copper, 1.00 to 1.10. Copper, 1.00 to 1.10. Copper, 1.00 to 1.10.

**Grain** Wheat, 1.10 to 1.15. Wheat, 1.10 to 1.15. Wheat, 1.10 to 1.15.

**Stocks** American Super, 24 1/2. American Super, 24 1/2. American Super, 24 1/2.

**Commodities** Sugar, 10.00 to 10.50. Sugar, 10.00 to 10.50. Sugar, 10.00 to 10.50.

**Metals** Copper, 1.00 to 1.10. Copper, 1.00 to 1.10. Copper, 1.00 to 1.10.

**Grain** Wheat, 1.10 to 1.15. Wheat, 1.10 to 1.15. Wheat, 1.10 to 1.15.

**Stocks** American Super, 24 1/2. American Super, 24 1/2. American Super, 24 1/2.

**Commodities** Sugar, 10.00 to 10.50. Sugar, 10.00 to 10.50. Sugar, 10.00 to 10.50.

**Metals** Copper, 1.00 to 1.10. Copper, 1.00 to 1.10. Copper, 1.00 to 1.10.

**Grain** Wheat, 1.10 to 1.15. Wheat, 1.10 to 1.15. Wheat, 1.10 to 1.15.

**Stocks** American Super, 24 1/2. American Super, 24 1/2. American Super, 24 1/2.

**Commodities** Sugar, 10.00 to 10.50. Sugar, 10.00 to 10.50. Sugar, 10.00 to 10.50.

**Metals** Copper, 1.00 to 1.10. Copper, 1.00 to 1.10. Copper, 1.00 to 1.10.

**Grain** Wheat, 1.10 to 1.15. Wheat, 1.10 to 1.15. Wheat, 1.10 to 1.15.

**Stocks** American Super, 24 1/2. American Super, 24 1/2. American Super, 24 1/2.

**Commodities** Sugar, 10.00 to 10.50. Sugar, 10.00 to 10.50. Sugar, 10.00 to 10.50.

**Metals** Copper, 1.00 to 1.10. Copper, 1.00 to 1.10. Copper, 1.00 to 1.10.

**Grain** Wheat, 1.10 to 1.15. Wheat, 1.10 to 1.15. Wheat, 1.10 to 1.15.

**Stocks** American Super, 24 1/2. American Super, 24 1/2. American Super, 24 1/2.

**Commodities** Sugar, 10.00 to 10.50. Sugar, 10.00 to 10.50. Sugar, 10.00 to 10.50.

**Metals** Copper, 1.00 to 1.10. Copper, 1.00 to 1.10. Copper, 1.00 to 1.10.

**Grain** Wheat, 1.10 to 1.15. Wheat, 1.10 to 1.15. Wheat, 1.10 to 1.15.

**Stocks** American Super, 24 1/2. American Super, 24 1/2. American Super, 24 1/2.

**Commodities** Sugar, 10.00 to 10.50. Sugar, 10.00 to 10.50. Sugar, 10.00 to 10.50.

**Metals** Copper, 1.00 to 1.10. Copper, 1.00 to 1.10. Copper, 1.00 to 1.10.

**Grain** Wheat, 1.10 to 1.15. Wheat, 1.10 to 1.15. Wheat, 1.10 to 1.15.

**Stocks** American Super, 24 1/2. American Super, 24 1/2. American Super, 24 1/2.

**Commodities** Sugar, 10.00 to 10.50. Sugar, 10.00 to 10.50. Sugar, 10.00 to 10.50.

**Metals** Copper, 1.00 to 1.10. Copper, 1.00 to 1.10. Copper, 1.00 to 1.10.

**Grain** Wheat, 1.10 to 1.15. Wheat, 1.10 to 1.15. Wheat, 1.10 to 1.15.

**Stocks** American Super, 24 1/2. American Super, 24 1/2. American Super, 24 1/2.

**Commodities** Sugar, 10.00 to 10.50. Sugar, 10.00 to 10.50. Sugar, 10.00 to 10.50.

**Metals** Copper, 1.00 to 1.10. Copper, 1.00 to 1.10. Copper, 1.00 to 1.10.

**Grain** Wheat, 1.10 to 1.15. Wheat, 1.10 to 1.15. Wheat, 1.10 to 1.15.

**Stocks** American Super, 24 1/2. American Super, 24 1/2. American Super, 24 1/2.

**Commodities** Sugar, 10.00 to 10.50. Sugar, 10.00 to 10.50. Sugar, 10.00 to 10.50.

**Metals** Copper, 1.00 to 1.10. Copper, 1.00 to 1.10. Copper, 1.00 to 1.10.

**Grain** Wheat, 1.10 to 1.15. Wheat, 1.10 to 1.15. Wheat, 1.10 to 1.15.

**Stocks** American Super, 24 1/2. American Super, 24 1/2. American Super, 24 1/2.

**Commodities** Sugar, 10.00 to 10.50. Sugar, 10.00 to 10.50. Sugar, 10.00 to 10.50.

**Metals** Copper, 1.00 to 1.10. Copper, 1.00 to 1.10. Copper, 1.00 to 1.10.

**Grain** Wheat, 1.10 to 1.15. Wheat, 1.10 to 1.15. Wheat, 1.10 to 1.15.

**Stocks** American Super, 24 1/2. American Super, 24 1/2. American Super, 24 1/2.

**Commodities** Sugar, 10.00 to 10.50. Sugar, 10.00 to 10.50. Sugar, 10.00 to 10.50.

**Metals** Copper, 1.00 to 1.10. Copper, 1.00 to 1.10. Copper, 1.00 to 1.10.

**Grain** Wheat, 1.10 to 1.15. Wheat, 1.10 to 1.15. Wheat, 1.10 to 1.15.

**Stocks** American Super, 24 1/2. American Super, 24 1/2. American Super, 24 1/2.

**Commodities** Sugar, 10.00 to 10.50. Sugar, 10.00 to 10.50. Sugar, 10.00 to 10.50.

**Metals** Copper, 1.00 to 1.10. Copper, 1.00 to 1.10. Copper, 1.00 to 1.10.

**Grain** Wheat, 1.10 to 1.15. Wheat, 1.10 to 1.15. Wheat, 1.10 to 1.15.

**Stocks** American Super, 24 1/2. American Super, 24 1/2. American Super, 24 1/2.

**Commodities** Sugar, 10.00 to 10.50. Sugar, 10.00 to 10.50. Sugar, 10.00 to 10.50.

**Metals** Copper, 1.00 to 1.10. Copper, 1.00 to 1.10. Copper, 1.00 to 1.10.

**Grain** Wheat, 1.10 to 1.15. Wheat, 1.10 to 1.15. Wheat, 1.10 to 1.15.

**Stocks** American Super, 24 1/2. American Super, 24 1/2. American Super, 24 1/2.

**Commodities** Sugar, 10.00 to 10.50. Sugar, 10.00 to 10.50. Sugar, 10.00 to 10.50.

**Metals** Copper, 1.00 to 1.10. Copper, 1.00 to 1.10. Copper, 1.00 to 1.10.

**Grain** Wheat, 1.10 to 1.15. Wheat, 1.10 to 1.15. Wheat, 1.10 to 1.15.

**Stocks** American Super, 24 1/2. American Super, 24 1/2. American Super, 24 1/2.

**Commodities** Sugar, 10.00 to 10.50. Sugar, 10.00 to 10.50. Sugar, 10.00 to 10.50.

**Metals** Copper, 1.00 to 1.10. Copper, 1.00 to 1.10. Copper, 1.00 to 1.10.

**Grain** Wheat, 1.10 to 1.15. Wheat, 1.10 to 1.15. Wheat, 1.10 to 1.15.

**Stocks** American Super, 24 1/2. American Super, 24 1/2. American Super, 24 1/2.

**Commodities** Sugar, 10.00 to 10.50. Sugar, 10.00 to 10.50. Sugar, 10.00 to 10.50.

**Metals** Copper, 1.00 to 1.10. Copper, 1.00 to 1.10. Copper, 1.00 to 1.10.

**Grain** Wheat, 1.10 to 1.15. Wheat, 1.10 to 1.15. Wheat, 1.10 to 1.15.

**Stocks** American Super, 24 1/2. American Super, 24 1/2. American Super, 24 1/2.

**Commodities** Sugar, 10.00 to 10.50. Sugar, 10.00 to 10.50. Sugar, 10.00 to 10.50.

**Metals** Copper, 1.00 to 1.10. Copper, 1.00 to 1.10. Copper, 1.00 to 1.10.

**Grain** Wheat, 1.10 to 1.15. Wheat, 1.10 to 1.15. Wheat, 1.10 to 1.15.

**Stocks** American Super, 24 1/2. American Super, 24 1/2. American Super, 24 1/2.

**Commodities** Sugar, 10.00 to 10.50. Sugar, 10.00 to 10.50. Sugar, 10.00 to 10.50.

**Metals** Copper, 1.00 to 1.10. Copper, 1.00 to 1.10. Copper, 1.00 to 1.10.

**Grain** Wheat, 1.10 to 1.15. Wheat, 1.10 to 1.15. Wheat, 1.10 to 1.15.

**Stocks** American Super, 24 1/2. American Super, 24 1/2. American Super, 24 1/2.

**Commodities** Sugar, 10.00 to 10.50. Sugar, 10.00 to 10.50. Sugar, 10.00 to 10.50.

**Metals** Copper, 1.00 to 1.10. Copper, 1.00 to 1.10. Copper, 1.00 to 1.10.

**Grain** Wheat, 1.10 to 1.15. Wheat, 1.10 to 1.15. Wheat, 1.10 to 1.15.

**Stocks** American Super, 24 1/2. American Super, 24 1/2. American Super, 24 1/2.

**Commodities** Sugar, 10.00 to 10.50. Sugar, 10.00 to 10.50. Sugar, 10.00 to 10.50.

**Metals** Copper, 1.00 to 1.10. Copper, 1.00 to 1.10. Copper, 1.00 to 1.10.

**Grain** Wheat, 1.10 to 1.15. Wheat, 1.10 to 1.15. Wheat, 1.10 to 1.15.

**Stocks** American Super, 24 1/2. American Super, 24 1/2. American Super, 24 1/2.

**Commodities** Sugar, 10.00 to 10.50. Sugar, 10.00 to 10.50. Sugar, 10.00 to 10.50.

**Metals** Copper, 1.00 to 1.10. Copper, 1.00 to 1.10. Copper, 1.00 to 1.10.

**Grain** Wheat, 1.10 to 1.15. Wheat, 1.10 to 1.15. Wheat, 1.10 to 1.15.

**Stocks** American Super, 24 1/2. American Super, 24 1/2. American Super, 24 1/2.

**Commodities** Sugar, 10.00 to 10.50. Sugar, 10.00 to 10.50. Sugar, 10.00 to 10.50.

**Metals** Copper, 1.00 to 1.10. Copper, 1.00 to 1.10. Copper, 1.00 to 1.10.

**Grain** Wheat, 1.10 to 1.15. Wheat, 1.10 to 1.15. Wheat, 1.10 to 1.15.

**Stocks** American Super, 24 1/2. American Super, 24 1/2. American Super, 24 1/2.

**Commodities** Sugar, 10.00 to 10.50. Sugar, 10.00 to 10.50. Sugar, 10.00 to 10.50.

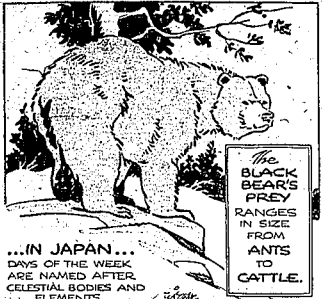
**Metals** Copper, 1.00 to 1.10. Copper, 1.00 to 1.10. Copper, 1.00 to 1.10.

**Grain** Wheat, 1.10 to 1.15. Wheat, 1.10 to 1.15. Wheat, 1.10 to 1.15.

**Stocks** American Super, 24 1/2. American Super, 24 1/2. American Super, 24 1/2.

THIS CURIOUS WORLD

By William Ferguson



The BLACK BEAR'S FUR RANGES IN SIZE FROM ANTS TO CATTLE.

...IN JAPAN... DAYS OF THE WEEK ARE NAMED AFTER CELESTIAL BODIES AND ELEMENTS.

THE QUEEN BEE IS NO RULER AT ALL, AND IS INFERIOR IN INTELLIGENCE TO THE WORKERS.

SIDE GLANCES

By George Clark



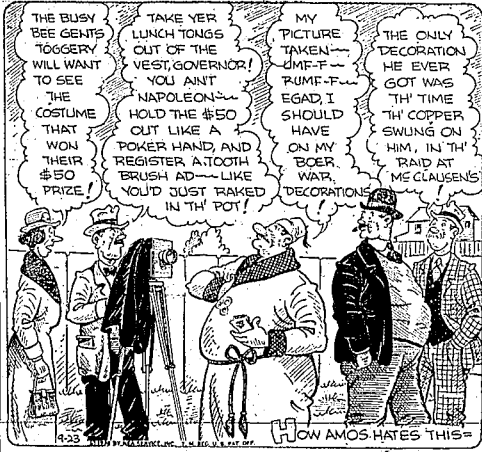
"I've just been waiting for my husband to do something to make me mad enough to buy a fur coat."

OUR BOARDING HOUSE

with Major Hooplo

OUT OUR WAY

By Williams



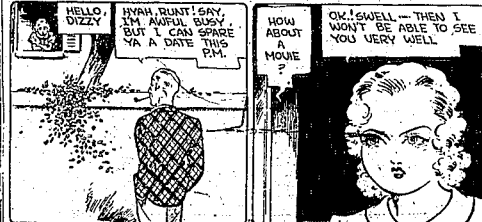
THE BUSY BEE GENTS WILL WANT TO SEE THE COSTUME THAT WON THEIR \$50 PRIZE! TAKE YER LUNCH TONGS OUT OF THE VEST, GOVERNOR! YOU AINT NAPOLEON-- HOLD THE \$50 OUT LIKE A POKER HAND, AND REGISTER A TOOTH BRUSH AD-- LIKE YOU'D JUST RAKED IN TH' POT! MY PICTURE TAKEN-- JIM-F-- REGAD, I SHOULD HAVE ON MY BOER WAR DECORATIONS. THE ONLY DECORATION HE EVER GOT WAS TH' TIME TH' COPPER SWUNG ON HIM, IN TH' RAID AT ME CLAUSEN'S.

WASH TUBBS



YOU GOT ME! JUNIOR WALDIS GOT TO GET OUT! BUT MY LITTLE LAMB DON'T UNDERSTAND-- JUNIOR IS A SALT OF THE EARTH. I SAID HE'S GOT TO GET OUT. BUT PET WITH WHAT ON EARTH WILL THE POOR GUY DO?

BOOTS AND HER BUDDIES



HELLO DIZZY. I'VE HAD A DATE WITH A DATE THIS PM. HOW ABOUT A MOUTE? OK! SWELL-- THEN I'M ABLE TO SEE YOU VERY WELL.

ALLEY OOP



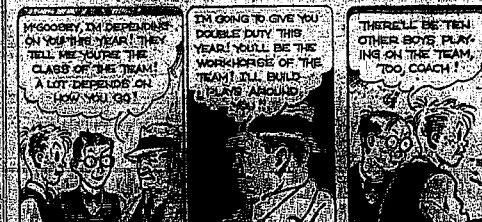
EXCEPT FOR TH' ONE WHOOTIE TANGLED WITH ME, WE ANT SEEN ACTIN' OSARU THIS WHOLE TRIP! TH' FIRE MUSTA CHASED AW-- OOP! EM ALL OUT! BUT WHERE'S PLACE WAS? DID THEY AS LONG AS ALIVE WITH-- EM? NOW, IF I REMEMBER CORRECTLY, WELL BE ABLE TO SEE OUR DESTINATION FROM A TOP-- THIS LITTLE KNOLL.

MYRA NORTH, SPECIAL NURSE



I MUST BOLT THE LABORATORY DOORS-- BEFORE HIS CRIES AROUSE THE HOUSEHOLD. HE'S WEAKENING! NOW TO THROW OFF THE SWITCH. I'VE BEEN STRUGGLING WITH GASTRIN SINCE I GOT INTO THE CLAP OF GRANVILLE WHO IS STUPID IN THE ELECTRIC CHAIR.

FRECKLES AND HIS FRIENDS

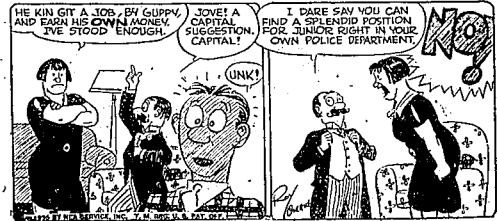


HYGGERBY, IM DEPENDANT ON YOU THIS YEAR! THEY TELL ME YOU'RE THE CLASS OF THE TEAM! A LOT DEPENDS ON HOW YOU GO! IM GOING TO GIVE YOU DOUBLE DUTY THIS YEAR! YOU'LL BE THE WESSAPOSTER OF THE WAY! I'LL BUILD THEM AROUND THERE'LL BE TEN OTHER BOYS PLAYING ON THE TEAM, TOO, COACH! YEAH, I KNOW THAT BUT YOU'RE THE STAR! I MUST MAKE GOOD THIS YEAR! MY CONTRACT TO COACH THE TEAM IS FOR ONLY ONE YEAR-- SO YOU SEE, IF WE LOSE TOO MANY GAMES, I'LL BE OUT! BUT YOURS SOOO ENOUGH, BY YOURSELF TO WIN ALL OF THEM! FIRST THING WE MUST HAVE THE QUARTERMASTER'S OFFICE! WE'LL HAVE ALL THE MONEY WE WANT!



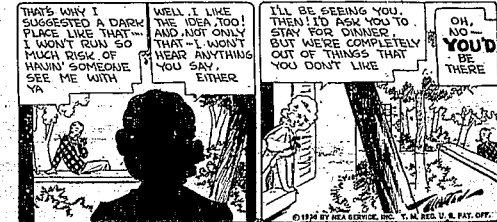
IF ENVIRONMENT HAD ANYTHING TO DO WITH A PERSON'S LOCKS, HERE'D BE ME, NOW. BATTILIN BERTHA, COMING DOWN THE STREET, I'VE FOUGHT HIM TO TAKE BATHS-- TO TAKE MEDICINE-- TO GO TO BED-- TO GET UP-- TO GET TO SCHOOL-- TO STUDY HOME WORK-- TO GET A JOB-- TO GET TO WORK ON TIME-- AND NOW, JUST WHEN I THOUGHT I COULD RETIRE FROM THE RING, HE TAKES A CORRESPONDENCE COURSE-- OH, YEH? WELL, WHAT SHOULD I LOW LIVE WITH ALL TH' HECKLIN' I'VE TOOK? I SHOULD BE WASSLIN' AROUND HERE GROGGY LIKE A RUBBER SPRING WITH A SPIDER TO HOLD ME UP.

WHY MOTHERS GET GRAY



HE KIN GIT A JOB, BY GUPPY, AND EARN HIS OWN MONEY, I'VE STOPPED ENOUGH. JOVE! A CAPER AND A SUEZINATION, CAPITAL! I DARE SAY YOU CAN FIND A SPLENDID POSITION FOR JUNIOR RIGHT IN YOUR OWN POLICE DEPARTMENT.

OH, NO-- YOU'D THERE



THAT'S WHY I SUGGESTED A DARK PLACE LIKE THAT-- I WOULDN'T RUN SO MUCH RISK OF HAVIN' SOMEONE SEE ME WITH-- WELL, I LIKE THE IDEA, TOO! AND NOT ONLY THAT-- I WOULDN'T HEAR ANYTHING YOU SAY, EITHER. I'LL BE SEEING YOU, THEN! I'D ASK YOU TO STAY FOR DINNER, BUT WE'RE COMPLETELY OUT OF THINGS THAT YOU DON'T LIKE.

WELL, PEOPLE-- SO THATS TH' BIG



HERE WE ARE-- IN SAMILLA. MY STARS, AINT IT BEAUTIFULLY! HEY, LOOK! AINT THAT A DINOSAUR I SEE, STOMPIN' AROUND DOWN THERE?

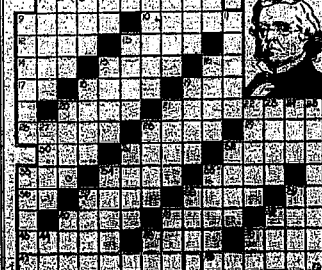
PRACTICALLY NO PULSE!



AFTER SECURELY BINDING THE PROFESSOR, MYRA TURNED HER ATTENTION TO GRANVILLE. PRACTICALLY NO PULSE! I'LL HAVE TO THINK FAST IF IM TO SAVE HIS LIFE!

Last Century Writer

Crossword puzzle grid with clues for horizontal and vertical words.





# YOUTH WORKS ON TRAVEL TO MOON

## Twelve-Year-Old Boy Hopes To Make Impulse Engine For Space Ship

WHEELING, W. Va. (AP)—Twelve-year-old Jimmy H. Wheeler is a budding young scientist. He is working on a model of a rocket engine that he hopes some day will culminate in a ship to carry him to the moon or Mars.

Wheeler can't ride a bicycle, but he can, and does discuss intelligently the Einstein theory of relativity, cosmic rays and other scientific data.

The young scientist believes inter-planetary travel will be possible in the future, and has planned three methods which he hopes will be the answer to the problem no other scientist has solved.

**Works on Secret Engine**

He is designing a new impulse engine, details of which he keeps secret. He is also constructing an apparatus by which he expects to use the power of lightning to speed the atom and develop radically new fuel of unlimited amount and power. Two friends are helping him build a powerful telescope with which he can study the universe while he conducts his experiments to construct the engine.

Since his graduation from grade school, Wheeler has been making a study of rocket ships. He has for his laboratory part of a garage where he spends most of his spare time with wired electrical devices, atomic and rocket ships.

The youth has never attended high school but spends many hours in the public library and studies scientific journals when he finishes his day's work in the laboratory.

**Beyond Hobby Stage**

The youth does not regard his experiments as being merely a hobby, but takes his work seriously, regarding it as a trip to the moon is highly probable, because he points out, the moon is only 238,857 miles from the earth, and with power being developed, a rocket ship could travel at least 4,000 an hour once it is outside the pull of the earth's gravity.

The Wheeling boy realizes he is not talking of the present, but of the future, and perhaps Mars, he hopes it becomes possible in my lifetime.

**INSTALL A STOKOL AUTOMATIC STOKER**

Find Your Coal Burning Heating Plant More Efficient—Save Fuel—Save Time—Save Money—Protect Your Health.

Stokol stokes your coal burning heating plant automatically, with definite savings in fuel bills. Stokol bio-fired model works from any angle from your present bin.

Buy the stoker with the latest arcing automatic operation. Installed easily—reversible—fits for outdoor use and is protected against probable price increases.

# High School News

Twin Falls Future Farmers of America chapter loan fund committee met at the high school agriculture room during the noon hour Tuesday. The committee was reorganized. Agents made applications for loans, and other business was discussed.

Purpose of the loan chapter which is an outgrowth of the old Thrift bank that was established three years ago under the leadership of Chester Mink is to train the boys in business ethics, honesty, and cooperation in business as well as the promoting of raising of livestock and to improve F. F. A. projects. "It enables the boys to loan money and to work out mighty well," D. Longenbaugh, ag instructor, said.

Total assets of the chapter include \$89 worth of livestock, \$10 worth of cash, and cash loans to members totaling \$17, bills payable \$16, \$35 worth of class B Production credit association stock and \$230.19 in the bank besides an F. F. A. checking account of \$90. It is shown by the treasurer's report.

The loan committee is comprised of F. F. A. boys for each of the classes, the club treasurer and ex-officio members that include Loyd Perry of the Fidelity National bank, D. DeHester, principal, and Mr. Longenbaugh, Melvin Ehlers is a senior representative, Maurice Cripps the junior, Fernis Sweet, sophomore, Kenneth Helger, freshman, and Gordon Catron, the F. F. A. treasurer.

The F. F. A. loan committee met again Wednesday noon to consider loans to chapter members of Gordon Catron, the president of the committee, Kenneth Helger, vice president, Maurice Cripps secretary-treasurer, and Fernis Sweet assistant secretary-treasurer.

The people in an Arabian community located in the mountains near Has El Kheima gather in circles and now listen to the direction of a leader, for five minutes after each meal.



**INSTALL A STOKOL AUTOMATIC STOKER**

Find Your Coal Burning Heating Plant More Efficient—Save Fuel—Save Time—Save Money—Protect Your Health.

Stokol stokes your coal burning heating plant automatically, with definite savings in fuel bills. Stokol bio-fired model works from any angle from your present bin.

Buy the stoker with the latest arcing automatic operation. Installed easily—reversible—fits for outdoor use and is protected against probable price increases.

**EXCLUSIVE SIGMA FEATURES**

Fully Automatic—The most efficient for the necessary operation. The SIGMA is the only one that has the "Clean, Dependable" features.

**SODEN ELECTRIC ELIAS BLDG.**

# AUSTRALIA MAY SEE STRATO HOP

**SYDNEY (AP)—Australia probably will be the site of the next attempted flight into the stratosphere by a body of scientists headed by the famous Picard brothers.**

First approaches have been made to the Commonwealth government for the necessary cooperation. The flight will be carried out in the Australian summer.

The men most interested in the ascent are Dr. Jean Picard, Prof. August Picard and Fred W. G. Swan, director of the Bartol Research Foundation, a noted British American physicist.

Picard or cable is easier to cut if the kite is first dipped into boiling water.

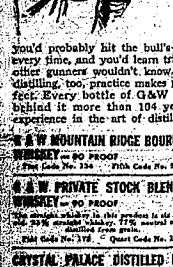
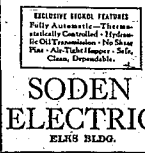
# IF YOU COULD, PRACTICE SHOOTING FOR 104 YEARS

You'd probably hit the bull's-eye every time, and you'd learn tricks older gunners wouldn't know. Distilling, too, practice makes perfect. Every bottle of G&W has behind it more than 104 years experience in the art of distilling.

**G & W MOUNTAIN RIDGE BOURBON WHISKEY—90 PROOF**  
Fint Code No. 728 • Fint Code No. 122

**G & W PRIVATE STOCK BLENDED WHISKEY—90 PROOF**  
Fint Code No. 124 • Fint Code No. 124

**CRYSTAL PRIZE DISTILLED DRY GIN—90 PROOF**  
Fint Code No. 125 • Fint Code No. 125



**CRYSTAL PRIZE DISTILLED DRY GIN—90 PROOF**  
Fint Code No. 125 • Fint Code No. 125

**CRYSTAL PRIZE DISTILLED DRY GIN—90 PROOF**  
Fint Code No. 125 • Fint Code No. 125

# Semiannual PENNEY DAYS

IT'S A LANDSLIDE OF VALUES

**Newest 1936 Styles!**

Tunic and "Princess" Type Dresses

**\$6.90**

The newest styles featuring all the new wanted colors. See them tomorrow! There's just the dress you want!

**Men! They've Just Arrived!**

150 Dress "Duke of Kent" Shirts

**98¢ ea.**

- Plaids!
- Checks!
- Deep tones!
- Button down collars!

All fast color and fully shrunk! Come down early tomorrow and stock up!

**NEW SHIPMENT**

**Men's Dress Caps**

New dark colors. Waterproof, unbreakable visor.

**49¢**

600 yds. Ace Hi

**Printed Broadcloth**

**10¢ yd.**

New Fall patterns in bright fast colors! 36 inches wide. Exceptional value!

**LARGE SIZE OPEN FLOOR SACKS**

**5 for 49¢**

Laundried—Bleached!

**Women's Tuck-Stitch Undies 25¢**

**Fabric GLOVES**

Novelty or Classic **49¢**

The smartest gloves of the season in suede finish fabric, Beasberg, rayon and novelty weaves.

Panties and vests in fine quality knit.

**Work Clothes FEATURES!**

Parva Buckles

Highest Quality 220 Denim

**Black Utility Case 49¢**

Wooden frame. Black fibre covering 5 1/2" x 13 1/4" inches.

Triple-Stitched No Raw Edges

**FACIAL TISSUE**

Giant Size Box! 500 Large Sheets!

**19¢**

**SANITARY NAPKINS**

Fem-Aid Brand!

Box of 12 **10¢**

**Womens' Cotton Hose**

Reinforced Foot! Sizes 8 1/4 to 10 1/2

**15¢**

**Outstanding Value! Women's SPORT OXFORDS**

**\$1.79** Square toes! Buckles! Kilties!

Many styles to choose from! Several, including creased vamp model shown, with detachable kiltie tongue. Choice of medium or low heels and leather or rubber ages. Sizes 4 to 8.

**Children's Sturdy School Oxfords**

**98¢**

All leather except outsole of long wearing composition!

**Men's 16-in. All-Leather HI-TOPS**

**\$4.98**

This soft, heavy boot is outlasting them all. Double sole, Barbour storm-walk, rivet-ditcher, leather, laces! Compare! You can't beat it!

**New Plateau OXFORDS**

Square Heel **\$1.98**

Several styles—Suede and calf, suede and patent, oiled and patent.

**Men's 8 inch BOOTS**

**\$1.98**

Outing hat, Jasi-Comp sole! A real buy!

# PENNEY'S

J. C. PENNEY COMPANY