

Weather Forecast

Fair tonight and Saturday; slightly warmer tonight; increasing activity Sunday; 62-72; clearing 22. Low this morning 22.

Idaho Times

A Regional Newspaper Serving TWIN FALLS, IDAHO, FRIDAY, OCTOBER 23, 1936

TODAY'S NEWS TODAY

LANDON APPEALS FOR SUPPORT OF 'REAL' BOURBOIS

Calls on Democrats to Fight With Republicans Against Administration

SAYS PARTY 'SOLD OUT' BY 'REAL' BOURBOIS

G. O. P. Nominee Asserts Farm Tenancy Problem One of Chief Problems

By ALEX. MORRIS OKLAHOMA CITY, Oct. 23 (UP)—Gov. Alf M. Landon called upon "real" Democrats today to "right shoulder to shoulder with us against the New Deal."

The present administration in Washington is not a democratic administration, Landon said.

He said the New Deal is a presidential nominee said in speaking by name such as New Deal, Roosevelt, and Alfred E. Smith, ex-Gov. William H. Murray, Joseph B. Lewis, Douglas, and a host of others.

"The administration has forfeited all claims of allegiance from those who still believe in the principles of that great party," he said in an address prepared for delivery in Tulsa, Okla.

Invading Oklahoma, where Murray greatest foe, Landon emphasized the ferocity of the issues that have caused regular Democratic leaders to break party loyalty to turn from the "political habits of a lifetime."

But he continued, the regular Democrats have been "sold out" of elected and in many states they "hold the balance of power" which the nominees urged them to use to elect the Roosevelt administration.

"The present administration is desperately worried," the Kansas governor declared in a speech prepared for delivery in Oklahoma City.

As a candidate he (Mr. Roosevelt) looked in one direction; as President he looks in another."

Gov. Landon said the administration had talked a great deal about solving the farm tenancy problem. (Continued on Page 2, Column 6)

Three Men Assault Self-Styled Chief Of 'Fascist' Group

By EARLE H. STEELE (Copyright, 1936, United Press)

NEW ORLEANS, Oct. 23 (UP)—Earle L. K. Smith, a follower of the late Huey P. Long and self-styled "Fascist" leader, was assaulted by three men in a radio station last night.

The giant former preacher, proud to designate himself a "rabble rouser," who was expelled only a few weeks by the Townsend old age pension movement and denounced by an official of the United States had just finished a "boast and bluster" speech over station WDSU when three men broke into the studio.

Bloes were exchanged vigorously and Smith acquiesced himself with his hands raised in the air and the stomach. Smith officials intervened and the assailants fled.

Smith went at once to his hotel, saying he had not been hurt.

Charges Party "Pit" "They were employed of the U. S. government—Fascist machine," he declared.

The station took place in the lecture hall of station WDSU, which has been the headquarters of the late Huey P. Long's organization, all participants of Smith were easily located.

Smith, however, was coming in over a loud speaker. He said he had just finished his speech and was leaving the station.

W. Leche, particularly on the sales floor, imposed by the administration.

Wunder split with the "Townsend" crowd. (Continued on Page 2, Column 2)

Governor Here ROSS BRINGS HIS CAMPAIGN HERE

Governor Speaks in Twin Falls Today at Rally Scheduled For 8 P. M.

First appearance in the general election campaign here of Gov. William E. Miller, Democrat, was announced today at a public meeting in the high school when the Democratic committee here announced the governor's visit.

The governor was to arrive here this afternoon from Boise. He spoke last evening at Meridian, and today he is expected to speak tomorrow night at Terrell.

Accompanying Governor Ross on his tour will be Sen. H. H. Miller, attorney general, and it was expected that Sen. Pat McDaniel of Nevada would also be present.

Franklin F. Frank, state party chairman, is expected to be at the gathering at the City park at 8 p. m. today at 8 p. m. at the high school when the Democratic committee here announced the governor's visit.

A general invitation is extended to the public to take part in the meeting of sponsors and supporters. Mr. Ross, who formerly served as attorney, is said to have made rapid recovery of his health and will present the issues upon which he is leading his campaign for the senate seat now held by William E. Borah.

CHAMBER OKS THREE PROJECTS

Directors Pledge Approval Of Hospital Addition, Dam And Hotel Drive

Three projects deemed to be of outstanding local importance were approved by the board of directors of the Twin Falls Chamber of Commerce in a meeting here today.

One consideration of the addition of a hospital to the city was given special attention. The hospital to care for the increased patient load, reported now at 140 beds, is being built at the site of the building of a dam across Rock creek.

The building of a dam across Rock creek is being undertaken by the people here, where the present building has been condemned. The dam is being built in the territory west of the city, for 10,000 acre of the State supply tract and the third dam to be built in the city.

The hotel drive, which is being handled by a committee headed by G. O. P. Pledge, who reported that the hotel drive is being handled by a committee headed by G. O. P. Pledge, who reported that the hotel drive is being handled by a committee headed by G. O. P. Pledge.

It was reported that the hotel drive is being handled by a committee headed by G. O. P. Pledge, who reported that the hotel drive is being handled by a committee headed by G. O. P. Pledge.

The hotel drive is being handled by a committee headed by G. O. P. Pledge, who reported that the hotel drive is being handled by a committee headed by G. O. P. Pledge.

The hotel drive is being handled by a committee headed by G. O. P. Pledge, who reported that the hotel drive is being handled by a committee headed by G. O. P. Pledge.

The hotel drive is being handled by a committee headed by G. O. P. Pledge, who reported that the hotel drive is being handled by a committee headed by G. O. P. Pledge.

MURDER CHARGE FILED AT BOISE IN FEUD KILLING

Water Company Worker Will Face Accusation After Shooting Neighbor

BULLETS SETTLE GRUDGE Accused Man Claims He Shot In Self Defense; Inquest Ordered Postponed

BOISE, Oct. 23 (UP)—A murder charge was filed in Ada county probate court today against Earl Moore, 34, a water company employee, who last night shot and killed his next door neighbor, L. C. Schell, 42, a water company employee, in a 12-year feud.

Prosecuting Attorney Willis Bradford said it was "an open murder charge" that would be in effect until a coroner's jury finds down a decision on the fatal shooting.

The feud between Moore and Schell began 12 years ago over water rights on an irrigation ditch which Moore built across the land of Schell last night when the two men shot their grudge out in the dark.

Neighbor Fred Finck, in his confession, Means told Sheriff Carl Coleman that he was working in his back yard when Moore shot at him twice and that he was hit in the neck.

Means said he went into his back yard to get a drink of water and fired two shots at Moore, who was standing on the porch of the carpenter's arven. The second shot hit him in the chest, killing him instantly.

Means is recovering in St. Luke's hospital. Dr. W. W. Foreney said he would remove the slug from Moore's chest.

Schell's body was at the Ada county morgue. Coroner L. C. Cain said he intended to take the body out of Schell's home this afternoon.

An inquest will not be called until the body is removed. Dr. Foreney said the man had been shot at a distance of 100 feet.

Continued on Page 2, Column 7

AL SMITH FLAYS 'SPENDING POLICY' Charges Government Already In 'Poophole' Because of Roosevelt's Program

FRISCO, Oct. 23 (UP)—The federal government is "in a poophole" as a result of its spending policy, Al Smith, Republican presidential nominee, said today.

Smith charged last night in a speech before the Young Men's Association in Frisco, Tex., that the Roosevelt administration is "in a poophole" because of its spending policy.

The former New York governor declared most of his speech to government finances and charges of misadministration by the Roosevelt administration.

"You and I know that continuing the spending habit means bankruptcy," he said. "That was said by the President at Albany in July, 1935. I submit that we're already there."

He recalled that after he lost the governorship in 1932, Mr. Roosevelt proposed in a public acceptance speech to take government out of the country.

Smith said he would not be a Republican today. "I'm a Republican," he said, "because I'm a Republican."

WASHINGTON, Oct. 23 (UP)—The Senate today passed a bill to pay \$100,000,000 to the United States for the purchase of the rights to the building of a dam across Rock creek.

The bill is being handled by a committee headed by G. O. P. Pledge, who reported that the hotel drive is being handled by a committee headed by G. O. P. Pledge.

The bill is being handled by a committee headed by G. O. P. Pledge, who reported that the hotel drive is being handled by a committee headed by G. O. P. Pledge.

The bill is being handled by a committee headed by G. O. P. Pledge, who reported that the hotel drive is being handled by a committee headed by G. O. P. Pledge.

The bill is being handled by a committee headed by G. O. P. Pledge, who reported that the hotel drive is being handled by a committee headed by G. O. P. Pledge.

The bill is being handled by a committee headed by G. O. P. Pledge, who reported that the hotel drive is being handled by a committee headed by G. O. P. Pledge.

The bill is being handled by a committee headed by G. O. P. Pledge, who reported that the hotel drive is being handled by a committee headed by G. O. P. Pledge.

The bill is being handled by a committee headed by G. O. P. Pledge, who reported that the hotel drive is being handled by a committee headed by G. O. P. Pledge.

Career At End

Senator James Couzens, Michigan's wealthy philanthropist, industrialist and lawmaker, was announced today by leaders high in public life and by millions who knew his quiet benefactions to crippled and underprivileged children.

There was a second nationalist thrust—a coordinated drive toward the Toledo-Madrid and Madrid-Madrid and Madrid-Madrid road to the east coast and seize control of it.

There was a second nationalist thrust—a coordinated drive toward the Toledo-Madrid and Madrid-Madrid and Madrid-Madrid road to the east coast and seize control of it.

There was a second nationalist thrust—a coordinated drive toward the Toledo-Madrid and Madrid-Madrid and Madrid-Madrid road to the east coast and seize control of it.

There was a second nationalist thrust—a coordinated drive toward the Toledo-Madrid and Madrid-Madrid and Madrid-Madrid road to the east coast and seize control of it.

There was a second nationalist thrust—a coordinated drive toward the Toledo-Madrid and Madrid-Madrid and Madrid-Madrid road to the east coast and seize control of it.

There was a second nationalist thrust—a coordinated drive toward the Toledo-Madrid and Madrid-Madrid and Madrid-Madrid road to the east coast and seize control of it.

There was a second nationalist thrust—a coordinated drive toward the Toledo-Madrid and Madrid-Madrid and Madrid-Madrid road to the east coast and seize control of it.

There was a second nationalist thrust—a coordinated drive toward the Toledo-Madrid and Madrid-Madrid and Madrid-Madrid road to the east coast and seize control of it.

There was a second nationalist thrust—a coordinated drive toward the Toledo-Madrid and Madrid-Madrid and Madrid-Madrid road to the east coast and seize control of it.

There was a second nationalist thrust—a coordinated drive toward the Toledo-Madrid and Madrid-Madrid and Madrid-Madrid road to the east coast and seize control of it.

There was a second nationalist thrust—a coordinated drive toward the Toledo-Madrid and Madrid-Madrid and Madrid-Madrid road to the east coast and seize control of it.

There was a second nationalist thrust—a coordinated drive toward the Toledo-Madrid and Madrid-Madrid and Madrid-Madrid road to the east coast and seize control of it.

There was a second nationalist thrust—a coordinated drive toward the Toledo-Madrid and Madrid-Madrid and Madrid-Madrid road to the east coast and seize control of it.

There was a second nationalist thrust—a coordinated drive toward the Toledo-Madrid and Madrid-Madrid and Madrid-Madrid road to the east coast and seize control of it.

There was a second nationalist thrust—a coordinated drive toward the Toledo-Madrid and Madrid-Madrid and Madrid-Madrid road to the east coast and seize control of it.

There was a second nationalist thrust—a coordinated drive toward the Toledo-Madrid and Madrid-Madrid and Madrid-Madrid road to the east coast and seize control of it.

There was a second nationalist thrust—a coordinated drive toward the Toledo-Madrid and Madrid-Madrid and Madrid-Madrid road to the east coast and seize control of it.

There was a second nationalist thrust—a coordinated drive toward the Toledo-Madrid and Madrid-Madrid and Madrid-Madrid road to the east coast and seize control of it.

There was a second nationalist thrust—a coordinated drive toward the Toledo-Madrid and Madrid-Madrid and Madrid-Madrid road to the east coast and seize control of it.

There was a second nationalist thrust—a coordinated drive toward the Toledo-Madrid and Madrid-Madrid and Madrid-Madrid road to the east coast and seize control of it.

There was a second nationalist thrust—a coordinated drive toward the Toledo-Madrid and Madrid-Madrid and Madrid-Madrid road to the east coast and seize control of it.

There was a second nationalist thrust—a coordinated drive toward the Toledo-Madrid and Madrid-Madrid and Madrid-Madrid road to the east coast and seize control of it.

There was a second nationalist thrust—a coordinated drive toward the Toledo-Madrid and Madrid-Madrid and Madrid-Madrid road to the east coast and seize control of it.

There was a second nationalist thrust—a coordinated drive toward the Toledo-Madrid and Madrid-Madrid and Madrid-Madrid road to the east coast and seize control of it.

There was a second nationalist thrust—a coordinated drive toward the Toledo-Madrid and Madrid-Madrid and Madrid-Madrid road to the east coast and seize control of it.

There was a second nationalist thrust—a coordinated drive toward the Toledo-Madrid and Madrid-Madrid and Madrid-Madrid road to the east coast and seize control of it.

Russia Rejects Hands-Off Policy for Spain; Rebels Peril Madrid Food Supply

More Loyal Troops Rush To Defense Declares Right To Aid Leftists

WILL MATCH STEPS BY FASCIST RIVALS

By HENRY T. CONHELL (Copyright, 1936, United Press)

MADRID, Oct. 23 (UP)—A fierce nationalist (rebel) threat to Madrid's food supply sent thousands of militiamen pouring into the Aranjuez sector south of the capital today.

The nationalist attack in force throughout the sector and the capital's new high military command believed it meant a bid to capture the road to the east coast and seize control of it.

There was a second nationalist thrust—a coordinated drive toward the Toledo-Madrid and Madrid-Madrid and Madrid-Madrid road to the east coast and seize control of it.

There was a second nationalist thrust—a coordinated drive toward the Toledo-Madrid and Madrid-Madrid and Madrid-Madrid road to the east coast and seize control of it.

There was a second nationalist thrust—a coordinated drive toward the Toledo-Madrid and Madrid-Madrid and Madrid-Madrid road to the east coast and seize control of it.

There was a second nationalist thrust—a coordinated drive toward the Toledo-Madrid and Madrid-Madrid and Madrid-Madrid road to the east coast and seize control of it.

There was a second nationalist thrust—a coordinated drive toward the Toledo-Madrid and Madrid-Madrid and Madrid-Madrid road to the east coast and seize control of it.

There was a second nationalist thrust—a coordinated drive toward the Toledo-Madrid and Madrid-Madrid and Madrid-Madrid road to the east coast and seize control of it.

There was a second nationalist thrust—a coordinated drive toward the Toledo-Madrid and Madrid-Madrid and Madrid-Madrid road to the east coast and seize control of it.

There was a second nationalist thrust—a coordinated drive toward the Toledo-Madrid and Madrid-Madrid and Madrid-Madrid road to the east coast and seize control of it.

There was a second nationalist thrust—a coordinated drive toward the Toledo-Madrid and Madrid-Madrid and Madrid-Madrid road to the east coast and seize control of it.

There was a second nationalist thrust—a coordinated drive toward the Toledo-Madrid and Madrid-Madrid and Madrid-Madrid road to the east coast and seize control of it.

There was a second nationalist thrust—a coordinated drive toward the Toledo-Madrid and Madrid-Madrid and Madrid-Madrid road to the east coast and seize control of it.

There was a second nationalist thrust—a coordinated drive toward the Toledo-Madrid and Madrid-Madrid and Madrid-Madrid road to the east coast and seize control of it.

There was a second nationalist thrust—a coordinated drive toward the Toledo-Madrid and Madrid-Madrid and Madrid-Madrid road to the east coast and seize control of it.

There was a second nationalist thrust—a coordinated drive toward the Toledo-Madrid and Madrid-Madrid and Madrid-Madrid road to the east coast and seize control of it.

There was a second nationalist thrust—a coordinated drive toward the Toledo-Madrid and Madrid-Madrid and Madrid-Madrid road to the east coast and seize control of it.

There was a second nationalist thrust—a coordinated drive toward the Toledo-Madrid and Madrid-Madrid and Madrid-Madrid road to the east coast and seize control of it.

There was a second nationalist thrust—a coordinated drive toward the Toledo-Madrid and Madrid-Madrid and Madrid-Madrid road to the east coast and seize control of it.

There was a second nationalist thrust—a coordinated drive toward the Toledo-Madrid and Madrid-Madrid and Madrid-Madrid road to the east coast and seize control of it.

There was a second nationalist thrust—a coordinated drive toward the Toledo-Madrid and Madrid-Madrid and Madrid-Madrid road to the east coast and seize control of it.

There was a second nationalist thrust—a coordinated drive toward the Toledo-Madrid and Madrid-Madrid and Madrid-Madrid road to the east coast and seize control of it.

There was a second nationalist thrust—a coordinated drive toward the Toledo-Madrid and Madrid-Madrid and Madrid-Madrid road to the east coast and seize control of it.

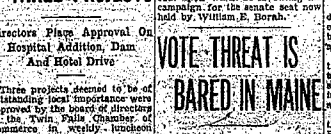
There was a second nationalist thrust—a coordinated drive toward the Toledo-Madrid and Madrid-Madrid and Madrid-Madrid road to the east coast and seize control of it.



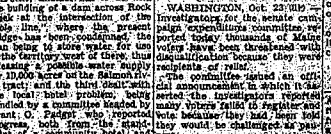
Governor Speaks in Twin Falls Today at Rally Scheduled For 8 P. M.



AL SMITH FLAYS 'SPENDING POLICY' Charges Government Already In 'Poophole' Because of Roosevelt's Program



Senator James Couzens, Michigan's wealthy philanthropist, industrialist and lawmaker, was announced today by leaders high in public life and by millions who knew his quiet benefactions to crippled and underprivileged children.



Accused Man Claims He Shot In Self Defense; Inquest Ordered Postponed



LEADERS MOURN COUZENS' DEATH Rites Planned on Monday for Philanthropist From Michigan



ROOSEVELT MAPS FINAL STRATEGY President Chooses Final-Week Campaign, Confidants After Giant Orations

Violent Quakes Terrify Alaska Anchorage, Alaska, Oct. 23 (UP)—The heaviest earthquake in the state, decreasing in intensity, today struck the town of Anchorage, Alaska, and other Alaska towns. Last night, terrifying tremors swept the state, causing damage to houses and buildings. In Anchorage, the earthquake caused the loss through property damage was small.

CHAMBER OKS THREE PROJECTS Directors Pledge Approval Of Hospital Addition, Dam And Hotel Drive

CHAMBER OKS THREE PROJECTS Directors Pledge Approval Of Hospital Addition, Dam And Hotel Drive

CHAMBER OKS THREE PROJECTS Directors Pledge Approval Of Hospital Addition, Dam And Hotel Drive

CHAMBER OKS THREE PROJECTS Directors Pledge Approval Of Hospital Addition, Dam And Hotel Drive

CHAMBER OKS THREE PROJECTS Directors Pledge Approval Of Hospital Addition, Dam And Hotel Drive

CHAMBER OKS THREE PROJECTS Directors Pledge Approval Of Hospital Addition, Dam And Hotel Drive

CHAMBER OKS THREE PROJECTS Directors Pledge Approval Of Hospital Addition, Dam And Hotel Drive

CHAMBER OKS THREE PROJECTS Directors Pledge Approval Of Hospital Addition, Dam And Hotel Drive

CHAMBER OKS THREE PROJECTS Directors Pledge Approval Of Hospital Addition, Dam And Hotel Drive

CHAMBER OKS THREE PROJECTS Directors Pledge Approval Of Hospital Addition, Dam And Hotel Drive

CHAMBER OKS THREE PROJECTS Directors Pledge Approval Of Hospital Addition, Dam And Hotel Drive

CHAMBER OKS THREE PROJECTS Directors Pledge Approval Of Hospital Addition, Dam And Hotel Drive

CHAMBER OKS THREE PROJECTS Directors Pledge Approval Of Hospital Addition, Dam And Hotel Drive

CHAMBER OKS THREE PROJECTS Directors Pledge Approval Of Hospital Addition, Dam And Hotel Drive

CHAMBER OKS THREE PROJECTS Directors Pledge Approval Of Hospital Addition, Dam And Hotel Drive

CHAMBER OKS THREE PROJECTS Directors Pledge Approval Of Hospital Addition, Dam And Hotel Drive

CHAMBER OKS THREE PROJECTS Directors Pledge Approval Of Hospital Addition, Dam And Hotel Drive

CHAMBER OKS THREE PROJECTS Directors Pledge Approval Of Hospital Addition, Dam And Hotel Drive

CHAMBER OKS THREE PROJECTS Directors Pledge Approval Of Hospital Addition, Dam And Hotel Drive

CHAMBER OKS THREE PROJECTS Directors Pledge Approval Of Hospital Addition, Dam And Hotel Drive

CHAMBER OKS THREE PROJECTS Directors Pledge Approval Of Hospital Addition, Dam And Hotel Drive

CHAMBER OKS THREE PROJECTS Directors Pledge Approval Of Hospital Addition, Dam And Hotel Drive

CHAMBER OKS THREE PROJECTS Directors Pledge Approval Of Hospital Addition, Dam And Hotel Drive

CHAMBER OKS THREE PROJECTS Directors Pledge Approval Of Hospital Addition, Dam And Hotel Drive

CHAMBER OKS THREE PROJECTS Directors Pledge Approval Of Hospital Addition, Dam And Hotel Drive

CHAMBER OKS THREE PROJECTS Directors Pledge Approval Of Hospital Addition, Dam And Hotel Drive

CHAMBER OKS THREE PROJECTS Directors Pledge Approval Of Hospital Addition, Dam And Hotel Drive

CHAMBER OKS THREE PROJECTS Directors Pledge Approval Of Hospital Addition, Dam And Hotel Drive

CHAMBER OKS THREE PROJECTS Directors Pledge Approval Of Hospital Addition, Dam And Hotel Drive

CHAMBER OKS THREE PROJECTS Directors Pledge Approval Of Hospital Addition, Dam And Hotel Drive

CHAMBER OKS THREE PROJECTS Directors Pledge Approval Of Hospital Addition, Dam And Hotel Drive

CHAMBER OKS THREE PROJECTS Directors Pledge Approval Of Hospital Addition, Dam And Hotel Drive

MORE LOYALISTS SPEED TO FRONT

Threat to Madrid Supply of Food Sends Thousands to Oppose Rebels

(Continued From Page One)
Madrid with the coast at Alicante.
The rebels were out to cut the railroad. If they succeed, the capital will be in a bad position for the transportation of food and military supplies. The new highway remaining in loyalist hands would not be likely to prove adequate.

Spain Reinforcements
The government poured thousands of militia reinforcements southward toward Aragon in an effort to stem the rebel drive. The city was bombed by the rebels, and the main line of communication with Madrid indicated the Aranjuez rail station could be completely cut by the rebel outfit, may have been hit.

Armed Rebel
A rebel in the highway leading to Madrid in the Navarrete region southeast of the capital and towards the key town of El Escorial in the northern part of the area, another important highway into Madrid.

Rebels Held Secure
The rebels demonstrated the superiority of their air force and their control of the capital and bomb Madrid from three enemy planes appeared high over the city. It was the first day light. The planes did not seem to be attacking the city, but by the furious anti-aircraft bombardment to which they were subjected.

Fighting Still Continued
The fighting still continued for the position of Orizaba, just captured by the rebels after relieving a long siege. Webb Miller and Reynolds returned to the city, and visited the region and reported the situation.

European Interest
The meeting of the international non-intervention committee at Madrid, Italy, Germany and Portugal aligned themselves against Communist Russia for a show-down on whether Moscow will attempt to save the leftist Spanish government.

IDAHO'S FINANCE POSITION GREYER

BOISE, Oct. 23 (AP)—The state of Idaho is in excellent financial condition, the state auditor's report, released through Gov. C. Ben Hess showed today.

Auditor Harry C. Parsons' report estimated the general fund surplus would be \$1,333,606.42 in cash at the close of this year.

The state on Sept. 30 had a grand total of cash receipts of \$141,071,434.42—\$1,000,000 less than in 1937, to Sept. 30, 1936.

When the present administration took control in 1933, there was a deficit of \$287,000 in the "state fund" which had been wiped out and an operating surplus on hand, the state was in a position to make further tax reductions, provided new laws are not passed that will curtail the general fund. Parsons said in the preface to his report.

MORE SCRAP IRON
HONOLULU (AP)—A \$50,000 amount of scrap iron has been shipped to Japan from Hawaii aboard the British freighter Kenilworth. The shipment will amount to approximately 4,500 tons.

MOTHER FINDS SON
GLASGOW (AP)—After 20 years of searching, Mrs. E. J. Galloway, 67, of Glasgow, has received news of her son, who she thought had been killed in the World war, is in Saint John, N. B.

Water freezes every night of the year at Alto Curcumin in Bolivia, while at noon the sun is hot enough to blister the skin.

Really a Reel

C. Carter, angling enthusiast, has been fishing in the world's smallest fishing reel in five days.

W. A. Carter, angling enthusiast, has been fishing in the world's smallest fishing reel in five days.

W. A. Carter, angling enthusiast, has been fishing in the world's smallest fishing reel in five days.

W. A. Carter, angling enthusiast, has been fishing in the world's smallest fishing reel in five days.

W. A. Carter, angling enthusiast, has been fishing in the world's smallest fishing reel in five days.

W. A. Carter, angling enthusiast, has been fishing in the world's smallest fishing reel in five days.

W. A. Carter, angling enthusiast, has been fishing in the world's smallest fishing reel in five days.

News in Brief

Madison Recovering
Mrs. James Brown, 63, mother of Rev. Mackey, recovering from an extended illness at her home in Kimberly.

John Ch Omega
John Ch Omega has been invited to contribute brief news items to the paper by telephone. The number of items is unlimited.

Forty Balaes Voted
Balloting being carried on at the office of Frank J. Smith, auditor, for the election of 40 members to the official referendum body, has so far resulted in 40 votes being cast, that official referendum body.

Dikoree Granted
Divorce was granted in district court today to Mrs. Hattie Hawkins from Eugene Hawkins after the husband had been absent for two years and two months.

Awarded Decree
In the divorce suit this morning a decree of divorce was awarded J. Howard Speer from Mrs. Gladys Speer. The husband had been absent for two years and two months.

President to Speak
The American Presbyterian Men's club meeting today at 6:30 p. m. will feature a regular monthly dinner served at the club. The speaker will be W. F. Shaw, president of the club.

On Eastern Trip
Miss Marie Hiltzberg, clerk in the office of the county auditor, has accompanied her parents, Mr. and Mrs. Marion Humphrey, on a Washington trip.

Charges Misconduct
Charles Edwards has brought suit in district court seeking damages from the county auditor, H. J. Edwards, for alleged charges of misconduct. The couple are represented by attorneys for the plaintiff.

Montana Greets
The state of Montana has greeted the state of Idaho with a letter of friendship. The letter was signed by the governor of Montana, and the governor of Idaho.

Cruelty Alleged
On grounds of cruelty, Mrs. Frances Edwards has commenced divorce action in district court, against Don Shelby, whom she married in 1913. She has lived apart since 1933. They are represented by attorneys for the plaintiff.

To Assist at Meet
Mr. and Mrs. E. J. Galloway, 67, of Glasgow, will assist at the meeting of the general fund surplus which will be held at the state auditor's office, this evening. She will be the guest of honor of her colleagues.

Viola Hefley
Mrs. and Mrs. W. R. Bolen visited from the University of Idaho at Moscow, Idaho. Mrs. Bolen was at one time a representative of the University of Idaho.

How the Candidates Line Up For General Election November 3rd

DEMOCRATIC PARTY
Idaho State Senator C. Ben Hess, Parma.

REPUBLICAN PARTY
United States Senator William E. Harris, Boise.

DEMOCRATIC PARTY
Idaho State Senator C. Ben Hess, Parma.

REPUBLICAN PARTY
United States Senator William E. Harris, Boise.

DEMOCRATIC PARTY
Idaho State Senator C. Ben Hess, Parma.

REPUBLICAN PARTY
United States Senator William E. Harris, Boise.

DEMOCRATIC PARTY
Idaho State Senator C. Ben Hess, Parma.

REPUBLICAN PARTY
United States Senator William E. Harris, Boise.

DEMOCRATIC PARTY
Idaho State Senator C. Ben Hess, Parma.

REPUBLICAN PARTY
United States Senator William E. Harris, Boise.

DEMOCRATIC PARTY
Idaho State Senator C. Ben Hess, Parma.

REPUBLICAN PARTY
United States Senator William E. Harris, Boise.

DEMOCRATIC PARTY
Idaho State Senator C. Ben Hess, Parma.

REPUBLICAN PARTY
United States Senator William E. Harris, Boise.

DEMOCRATIC PARTY
Idaho State Senator C. Ben Hess, Parma.

REPUBLICAN PARTY
United States Senator William E. Harris, Boise.

RUSSIA REJECTS HANDS-OFF PACT

Demand Right to Aid Madrid Government as Fascists Help Rebels

(Continued From Page One)
The agreement has not found support. The last proposal of the representative of the Soviet Union to grant a hands-off pact to Portugal which are the main basis of supply for the rebels also did not find support and was not even placed on the agenda of today's meeting of the committee.

Millionaire Jailed
Only by paying a bondsman \$200 cash to post \$250,000 bail did Andrew G. Jones, 52 (Deceased), millionaire son of a prominent New England wool manufacturer, escape the clutches of justice in New York county jail following his arrest on a warrant sworn out by his wife, Mrs. Marion H. Jones.

Trigo Assaults FASCIST LEADER
Gerard L. K. Smith attacked in Radio Boise but escapes unharmed.

(Continued From Page One)
Gerard William Lemke, third party candidate for Mayor of Boise, heads the "old age pension organization for Roosevelt Administration" reported by the state auditor.

BAPTIST WOMEN IN SESSION HERE
South Central Idaho District Rally Opens With 76 in Attendance

Seasons of the South Central Idaho district rally of Baptist women were underway today with about 75 delegates attending. Representatives were from Buhl, Pocatello, Idaho Falls, and other communities.

See Today
Continual confusion of patrons as they attempt to get in and out of the front doors of the post office. Every one entering or leaving is stopped and asked to get on the wrong side, either by the door or by the way they are meant to be passed, and otherwise tramping on one another's corners.

Markets at a Glance
Stocks fractions to more than a point higher. Bonds irregularly higher; Industrial stocks irregularly higher in quiet trading.

How the Candidates Line Up For General Election November 3rd

DEMOCRATIC PARTY
Idaho State Senator C. Ben Hess, Parma.

REPUBLICAN PARTY
United States Senator William E. Harris, Boise.

DEMOCRATIC PARTY
Idaho State Senator C. Ben Hess, Parma.

REPUBLICAN PARTY
United States Senator William E. Harris, Boise.

DEMOCRATIC PARTY
Idaho State Senator C. Ben Hess, Parma.

REPUBLICAN PARTY
United States Senator William E. Harris, Boise.

DEMOCRATIC PARTY
Idaho State Senator C. Ben Hess, Parma.

REPUBLICAN PARTY
United States Senator William E. Harris, Boise.

DEMOCRATIC PARTY
Idaho State Senator C. Ben Hess, Parma.

REPUBLICAN PARTY
United States Senator William E. Harris, Boise.

DEMOCRATIC PARTY
Idaho State Senator C. Ben Hess, Parma.

REPUBLICAN PARTY
United States Senator William E. Harris, Boise.

DEMOCRATIC PARTY
Idaho State Senator C. Ben Hess, Parma.

REPUBLICAN PARTY
United States Senator William E. Harris, Boise.

DEMOCRATIC PARTY
Idaho State Senator C. Ben Hess, Parma.

REPUBLICAN PARTY
United States Senator William E. Harris, Boise.

DEMOCRATIC PARTY
Idaho State Senator C. Ben Hess, Parma.

REPUBLICAN PARTY
United States Senator William E. Harris, Boise.

DEMOCRATIC PARTY
Idaho State Senator C. Ben Hess, Parma.

TRIO ASSAULTS FASCIST LEADER

Gerard L. K. Smith attacked in Radio Boise but escapes unharmed.

(Continued From Page One)
Gerard William Lemke, third party candidate for Mayor of Boise, heads the "old age pension organization for Roosevelt Administration" reported by the state auditor.

BAPTIST WOMEN IN SESSION HERE
South Central Idaho District Rally Opens With 76 in Attendance

Seasons of the South Central Idaho district rally of Baptist women were underway today with about 75 delegates attending. Representatives were from Buhl, Pocatello, Idaho Falls, and other communities.

See Today
Continual confusion of patrons as they attempt to get in and out of the front doors of the post office. Every one entering or leaving is stopped and asked to get on the wrong side, either by the door or by the way they are meant to be passed, and otherwise tramping on one another's corners.

Markets at a Glance
Stocks fractions to more than a point higher. Bonds irregularly higher; Industrial stocks irregularly higher in quiet trading.

How the Candidates Line Up For General Election November 3rd

DEMOCRATIC PARTY
Idaho State Senator C. Ben Hess, Parma.

REPUBLICAN PARTY
United States Senator William E. Harris, Boise.

DEMOCRATIC PARTY
Idaho State Senator C. Ben Hess, Parma.

REPUBLICAN PARTY
United States Senator William E. Harris, Boise.

DEMOCRATIC PARTY
Idaho State Senator C. Ben Hess, Parma.

REPUBLICAN PARTY
United States Senator William E. Harris, Boise.

DEMOCRATIC PARTY
Idaho State Senator C. Ben Hess, Parma.

REPUBLICAN PARTY
United States Senator William E. Harris, Boise.

DEMOCRATIC PARTY
Idaho State Senator C. Ben Hess, Parma.

REPUBLICAN PARTY
United States Senator William E. Harris, Boise.

DEMOCRATIC PARTY
Idaho State Senator C. Ben Hess, Parma.

REPUBLICAN PARTY
United States Senator William E. Harris, Boise.

DEMOCRATIC PARTY
Idaho State Senator C. Ben Hess, Parma.

REPUBLICAN PARTY
United States Senator William E. Harris, Boise.

DEMOCRATIC PARTY
Idaho State Senator C. Ben Hess, Parma.

REPUBLICAN PARTY
United States Senator William E. Harris, Boise.

DEMOCRATIC PARTY
Idaho State Senator C. Ben Hess, Parma.

REPUBLICAN PARTY
United States Senator William E. Harris, Boise.

DEMOCRATIC PARTY
Idaho State Senator C. Ben Hess, Parma.

REPUBLICAN PARTY
United States Senator William E. Harris, Boise.

DEMOCRATIC PARTY
Idaho State Senator C. Ben Hess, Parma.

REPUBLICAN PARTY
United States Senator William E. Harris, Boise.

Literary Fame

Gerard L. K. Smith attacked in Radio Boise but escapes unharmed.

(Continued From Page One)
Gerard William Lemke, third party candidate for Mayor of Boise, heads the "old age pension organization for Roosevelt Administration" reported by the state auditor.

BAPTIST WOMEN IN SESSION HERE
South Central Idaho District Rally Opens With 76 in Attendance

Seasons of the South Central Idaho district rally of Baptist women were underway today with about 75 delegates attending. Representatives were from Buhl, Pocatello, Idaho Falls, and other communities.

See Today
Continual confusion of patrons as they attempt to get in and out of the front doors of the post office. Every one entering or leaving is stopped and asked to get on the wrong side, either by the door or by the way they are meant to be passed, and otherwise tramping on one another's corners.

Markets at a Glance
Stocks fractions to more than a point higher. Bonds irregularly higher; Industrial stocks irregularly higher in quiet trading.

How the Candidates Line Up For General Election November 3rd

DEMOCRATIC PARTY
Idaho State Senator C. Ben Hess, Parma.

REPUBLICAN PARTY
United States Senator William E. Harris, Boise.

DEMOCRATIC PARTY
Idaho State Senator C. Ben Hess, Parma.

REPUBLICAN PARTY
United States Senator William E. Harris, Boise.

DEMOCRATIC PARTY
Idaho State Senator C. Ben Hess, Parma.

REPUBLICAN PARTY
United States Senator William E. Harris, Boise.

DEMOCRATIC PARTY
Idaho State Senator C. Ben Hess, Parma.

REPUBLICAN PARTY
United States Senator William E. Harris, Boise.

DEMOCRATIC PARTY
Idaho State Senator C. Ben Hess, Parma.

REPUBLICAN PARTY
United States Senator William E. Harris, Boise.

DEMOCRATIC PARTY
Idaho State Senator C. Ben Hess, Parma.

REPUBLICAN PARTY
United States Senator William E. Harris, Boise.

DEMOCRATIC PARTY
Idaho State Senator C. Ben Hess, Parma.

REPUBLICAN PARTY
United States Senator William E. Harris, Boise.

DEMOCRATIC PARTY
Idaho State Senator C. Ben Hess, Parma.

REPUBLICAN PARTY
United States Senator William E. Harris, Boise.

DEMOCRATIC PARTY
Idaho State Senator C. Ben Hess, Parma.

REPUBLICAN PARTY
United States Senator William E. Harris, Boise.

DEMOCRATIC PARTY
Idaho State Senator C. Ben Hess, Parma.

REPUBLICAN PARTY
United States Senator William E. Harris, Boise.

DEMOCRATIC PARTY
Idaho State Senator C. Ben Hess, Parma.

REPUBLICAN PARTY
United States Senator William E. Harris, Boise.

MURDER CHARGE IN FEUD KILLING

Water Company Worker Will Face Accusation After Shooting Neighbor

(Continued From Page One)
The feud had been a source of worry to officers for several years. The two men were continually in the area of the feud, and both posted peace bonds following the shooting. When the feud was warned the men would sever all relations against their will. Until the fatal shooting, the feud, on far side of the city, had been dormant.

Building Permits
D. R. Smoock, to erect a 1412-foot dwelling on lot 6, block 2, Senior addition.

Temperatures
By United Press

Boise Min. Max. Precip.
Boise 30 46 0.00
Caldwell 30 46 0.00
Idaho Falls 30 46 0.00
Pocatello 30 46 0.00
Twin Falls 30 46 0.00

Candidates for Governor Elected
County in Campaign; Here Monday Evening

Mayor Barzilla W. Clark of Idaho Falls, Democratic candidate for governor, will make three public appearances in Twin Falls today.

SEEKS FAMED STALLION
LONDON (AP)—The Soviet government has made an unsuccessful attempt to buy the stallion Boldo, winner of the St. Leger, Corporation cup and Arcot cup, at a price offered.

CLARKS HAVE DAUGHTER
Friends here have received word of the birth of a daughter yesterday at a Pocatello hospital to Mr. and Mrs. D. W. Clark.

Utah California Motor Lines, Inc.
Fast Direct Service From Twin Falls

To Pocatello, Salt Lake City, Portland, Los Angeles, San Francisco, Oakland, Denver and Idaho Falls.
Reservations Free.

STARTS SUNDAY
WHEELER WOODS
The greatest entertainment in Idaho.
Three hours of glorious spectacle and romance. 50 stars. 300 plays.
myriad song hits.

STARTS SUNDAY
WHEELER WOODS
The greatest entertainment in Idaho.
Three hours of glorious spectacle and romance. 50 stars. 300 plays.
myriad song hits.

STARTS SUNDAY
WHEELER WOODS
The greatest entertainment in Idaho.
Three hours of glorious spectacle and romance. 50 stars. 300 plays.
myriad song hits.

STARTS SUNDAY
WHEELER WOODS
The greatest entertainment in Idaho.
Three hours of glorious spectacle and romance. 50 stars. 300 plays.
myriad song hits.

STARTS SUNDAY
WHEELER WOODS
The greatest entertainment in Idaho.
Three hours of glorious spectacle and romance. 50 stars. 300 plays.
myriad song hits.

STARTS SUNDAY
WHEELER WOODS
The greatest entertainment in Idaho.
Three hours of glorious spectacle and romance. 50 stars. 300 plays.
myriad song hits.

STARTS SUNDAY
WHEELER WOODS
The greatest entertainment in Idaho.
Three hours of glorious spectacle and romance. 50 stars. 300 plays.
myriad song hits.

STARTS SUNDAY
WHEELER WOODS
The greatest entertainment in Idaho.
Three hours of glorious spectacle and romance. 50 stars. 300 plays.
myriad song hits.

STARTS SUNDAY
WHEELER WOODS
The greatest entertainment in Idaho.
Three hours of glorious spectacle and romance. 50 stars. 300 plays.
myriad song hits.

STARTS SUNDAY
WHEELER WOODS
The greatest entertainment in Idaho.
Three hours of glorious spectacle and romance. 50 stars. 300 plays.
myriad song hits.

STARTS SUNDAY
WHEELER WOODS
The greatest entertainment in Idaho.
Three hours of glorious spectacle and romance. 50 stars. 300 plays.
myriad song hits.

STARTS SUNDAY
WHEELER WOODS
The greatest entertainment in Idaho.
Three hours of glorious spectacle and romance. 50 stars. 300 plays.
myriad song hits.

STARTS SUNDAY
WHEELER WOODS
The greatest entertainment in Idaho.
Three hours of glorious spectacle and romance. 50 stars. 300 plays.
myriad song hits.

STARTS SUNDAY
WHEELER WOODS
The greatest entertainment in Idaho.
Three hours of glorious spectacle and romance. 50 stars. 300 plays.
myriad song hits.

STARTS SUNDAY
WHEELER WOODS
The greatest entertainment in Idaho.
Three hours of glorious spectacle and romance. 50 stars. 300 plays.
myriad song hits.

STARTS SUNDAY
WHEELER WOODS
The greatest entertainment in Idaho.
Three hours of glorious spectacle and romance. 50 stars. 300 plays.
myriad song hits.

STARTS SUNDAY
WHEELER WOODS
The greatest entertainment in Idaho.
Three hours of glorious spectacle and romance. 50 stars. 300 plays.
myriad song hits.

STARTS SUNDAY
WHEELER WOODS
The greatest entertainment in Idaho.
Three hours of glorious spectacle and romance. 50 stars. 300 plays.
myriad song hits.

UNIVERSITY LISTS LIVESTOCK WINS

Blue Ribbons Bedeck Champions Sent from Moscow to Portland Show

MOSCOW (Special) — Three grand champions, two champions, one reserve champion, 26 firsts, 13 seconds and a score of lesser awards were bestowed upon University of Idaho livestock at the 1930 Pacific International Livestock exposition at Portland, Oct. 20. Student judging teams scored two firsts, one second and a third in competition with teams from other western agricultural colleges.

Championship ribbons were won on a Shorthorn steer, on a Polled-China cow, and on a Duron-Jersey sow. Champions were the steer which later became the grand champion. Reserve championship was taken by the Jersey steer. Idaho's winnings in fat steer classes were particularly noteworthy. The institution entered six individuals and won five firsts and three champions.

Bring 366 Found

Idaho's grand champion steer, "14 to 1000" was bought by William Bond, Newark, Calif. Shortly after the record price of \$2000, the steer was sold to the University of Idaho for \$2000. The animal weighed 800 pounds. Mr. Bond also bought the other two Shorthorn steers exhibited by the university. He plans to enter his steers in the Great Western Livestock show at Los Angeles in December.

University entries continued to be outstanding winners in an interesting, leading two grand championships, five champions, 20 firsts, and 13 seconds. The institution entered 27 ewe classes. The record this year's Pacific International Livestock show reveals that the time of award the university has placed a record program in the livestock business and medium type lamb breeders in the United States.

Mountain View

Meeting of Mountain View school at the Community parlors. Due to several cancellations on the program the feature hour was the formal Mrs. O. C. Paulsen, Mrs. J. W. McQuinn and Mrs. E. E. Bauer served refreshments during the social hour. The next meeting was held on Thursday, Nov. 1, covering from an accident, was honored. A party given by the Eagle Eye 4-H Sewing club at the Mountain View school Wednesday. Games were played and refreshments were served. Miss Terrell received a number of lovely gifts from her schoolmates.

HAWAIIAN FIRE LOSS SMALL

HONOLULU (UP) — Statistics show that although much more inflammable material are used in the construction work here than in America, fire losses are smaller than in any other part of the United States.

A tree 84 feet in diameter, and estimated to be more than 800 years old, is believed to be the world's oldest tree. It is in Yosemite national park.

Garbo Staggered Robert Taylor By Surprise And High-Voltage Kiss!

BY PAUL HARRISON (NEA Service)

HOLLYWOOD

The Great-Garbo played a beer joke on Robert Taylor the other day. It was a joke that would have staggered any man. It staggered Taylor.

Coincidentally, he is rated as a great lover. Actually, he is still pretty shy. During the more than two months of filming "Camille," Taylor's attitude toward Garbo was one of a clear-eyed mingled with a little awe. Garbo is the only woman of the screen who has been inspired by the Garbo legend.



Greta Garbo, the aphex of the film, has revealed a new "haughty personality" at times—and her studio is trying to keep it quiet for fear of disturbing the Garbo legend. Greta started the entire company on the set of "Camille" by giving Robert Taylor a surprise kiss of the type that very definitely wasn't called for in the script. Taylor was the most jangled of all. And Greta simply turned back to her old quiet self right afterward. Garbo and Taylor are shown above on the studio set.

BUHL

Mrs. James Shields, Jr. entertained the Sun Bowl control bridge club at a luncheon Tuesday. High score prize was awarded to Mrs. Jess Eschman and Mrs. C. C. Griffen, Vinton. A. I. received a guest prize. Mrs. Lawrence Knifer will be the club hostess at the next meeting.

The Cedar Glen Ladies Row club met Wednesday with Miss Vera Sandgren. Fourteen members were present and two guests, Mrs. E. N. Johnson, Boise, and Mrs. C. D. Boring. Hot call was answered with Halowen's plan. At the next meeting, Nov. 16 at the home of Mrs. E. S. Smith, the annual election of officers will be held.

Mrs. E. N. Johnson, Boise, is spending the week here visiting at the Sandgren home with Mrs. C. D. Boring.

Mrs. Harry Kuster entertained the Bull Moose Study club Tuesday afternoon. Miss Lulu Leland

played two piano solos. The next meeting will be in the evening at the home of Mrs. W. H. Wright. The Wednesday afternoon control bridge club met this week with Mrs. Fred Loring. Mrs. Ormond Thomas won the high score prize and Mrs. Loring the second high.

The Cedar Draw community club met Wednesday with Mrs. Leo Hollaway. Twenty members responded to roll call with clippings of current events. Mrs. Leo Hollaway and Mrs. Tom Johnson were guests. Plans were made for the annual banquet to be held Nov. 23 at the Cedar Draw school house recreational room.

The Sunny Side Social club met with Mrs. J. W. Campbell Wednesday for a covered dish luncheon. The afternoon was spent quilting. Mrs. Eva Strasser will move to Twin Falls soon was given a handshake shower. The next meeting will be at the home of Mrs. Harry Wigginton with Mrs. Wilfred Wigginton as hostess.

DAKOTA WIDENS EROSION BATTLE

Farmers Will Be Shown Latest And Best Methods of Conservation

FARGO, N. D. (UP)—Plans to acquaint farmers of "wingspread drought-battered" North Dakota with soil erosion control methods are being furthered in the north central part of the state, according to J. H. Bennett, chief of the soil conservation service.

A new soil conservation demonstration area of 25,000 acres in Bottineau county has been established. This area is representative of much of the farming land in North Dakota. The principal crop is spring wheat, and in 1930, 50 per cent of the total acreage was devoted to wheat production.

Wind-Erosion Great

Soil erosion in Bottineau county, as throughout North Dakota, especially in the northern section, is serious, but has been gradual. Much of the land has been in almost continuous cultivation since 1803 and soil wind erosion has damaged many fields by blowing away dry, fertilized top soil.

In places, fence lines have been covered to as high as 12 inches by this drifting soil. Drouth has accentuated erosion conditions in local spots, but the practice of leaving the land unprotected by vegetation during the summer has been a contributing factor to wind erosion.

The soil conservation service will demonstrate soil and water conservation methods in cooperation with farmers in the Bottineau area, Bennett announced.

Metual Agreement

To establish the demonstration, the service will agree to provide necessary technical planning and assistance in setting up erosion control programs for farms, he said.

In return, the farmer must agree to follow the recommended practice for a five-year period. He will supply as much labor material as possible, and the service will furnish supplemental labor and equipment when necessary.

The Bottineau county demonstration project is the second to be established in North Dakota, and brings the total of service demonstration areas to 346 in 13 states.

MURTAUGH

A birthday surprise party was given in honor of Clinton East by the senior and junior classes in high school Saturday.

The Relief society held at the L. B. Church Tuesday afternoon with Mrs. L. T. Patterson presiding at the season on the biography of Alice Palmer.

Helen Glenn left Thursday for Boise to spend the winter with her father.

Mrs. and Mrs. Arthur Messer and Mr. and Mrs. Harold Messer left Thursday for a three week trip to Tacoma, Wash., to visit with Mrs. Messer's brothers, Harvey and Charles Messer.

Mrs. and Mrs. Walter Rasmussen and family, Etchland, N. Dak., are visiting Mrs. Rasmussen's parents, Mr. and Mrs. Aho Thorson.

Mrs. and Mrs. A. B. Beverly, Nampa, are here looking after their farming business.

The Day Scouts and their leaders, Kendall Dayley and Earl Corson are sponsoring a box social and dance at the high school auditorium Friday evening.

SOVIET DEMANDS HORSE TAILS CUT

Hair Will Be Used to Supply Valuable Raw Materials In Industry

MOSCOW (UP)—An Soviet farm horses will lose their tails before Nov. 1 under instructions of the commissariat of agriculture issued to state and collective farms.

The order was issued in a three-column announcement in the agricultural press which featured a picture of a peasant docking his horse's tail.

It read:

Valuable Raw Material

"Attention of collective farmers, individual peasants and state farm workers: By organized cutting of tails and manes of horses we can supply our industry with very valuable raw material for production of goods of broad consumption."

"Docking of horses according to instruction of the commissariat of agriculture of the U. S. S. R. is ordered from Sept. 15 to Nov. 1. When the mane and tail are combed during the cleaning of horses much hair remains on the comb and brushes. Do not throw it away but collect it in one place."

"Deliver all hair collected as a result of cleaning and docking of horses to collecting organizations at fixed prices."

Buy Your Heater NOW!

We have a good selection of new and used stoves, heaters and circulators

Get Our Prices First!

We Can Save You Money!

RIDGEWAY HARDWARE AND FURNITURE CO.

RIMBERLY

Auto Mechanic Wanted

None But Experienced Need Apply

BROWNING AUTO CO.

RAY THOMPSON RAY HEATHERTON and MYRTLE SINGERS

ANDRE KOSTELANETZ AND HIS 45 PIECE

CHESTERFIELD DANCE ORCHESTRA

TWO NIGHTS A WEEK

Friday's Evening

Wednesday's Evening

NINO MARTINI

at 9:30 P.M. at all Columbia Stations

New LOW PRICES ROMA La Bohème Sweet Wine

La Bohème Sweet Wine Co., Inc. - Lodi, California

• The moderate prices on ROMA La Bohème sweet wine, have been further lowered by the fact that the wine is now being produced in Italy. The wine is of the highest quality, bouquet, and rare goodness remain unobscured.

ROMA WINE CO., Inc. - Lodi, California

LAST DAY SATURDAY

SAMPSON'S BIG DISPOSAL SALE

Convenient Terms Liberal Trade-In

Sampson's big disposal sale has been a big success and it isn't over yet. There is one more big day of bargains. Tomorrow is your last chance to save money on any of the articles listed below. They are priced to clean the building to the walls and you will have to come early or you will be disappointed. We have sold lots of merchandise but there are still lots of good buys waiting for the wise shopper.

STOVES Monarch Range Eureka Range Home Comfort Range Heaters of All Sizes and Descriptions and Prices	Washers A. B. C. Woodrow Easy and Others	Musical Merchandise Guitars Trombones Harmonicas and Teachers Supplies	RADIOS Priced from \$2.50 up RCA Victor Crosley Atwater Kent and Many Others
--	---	---	---

Twin Falls Burley Buhl Gooding

ONE PRICE A SQUARE DEAL

INCREASE SHOWN IN TURKEY CROP

Statistician Explains Situation Existing in Industry

By RICHARD C. ROSS, Agricultural Statistician

A big crop of turkeys is being raised this year, following two years of decreased production. From an estimated total of about 20,000,000 turkeys in 1931 and 1932, production fell to about 15,000,000 in 1932, owing mainly to the feed shortage in 1932 and 1933. Production this year will be somewhat higher than in 1932 and 1933, the largest turkey crop of record.

View of the general meat situation, the big crop of turkeys will be a special cause for thanksgiving on the part of the consumer at least—Turkey prices are being maintained at a level similar to other meat prices. Consumers who missed out in 1934 and 1935 may be able to catch up on their appetite for turkey this year.

With ample supplies of turkeys at moderate prices, and with the consumer desiring to reduce the consumption of turkeys will not be likely to be heavy this season. In view of the fact that the turkey is a crop of eggs and also because of the increasing demand for turkey, it is probable that turkeys will be in short supply in 1935.

Large Increase Shown Returns from crop show a large increase in the average number of turkeys per farm. In the contrast to last year, the increase is great, the number of farms raising turkeys increased also. The gain in the number and size of commercial flocks is responsible for much of the increase, although the gain in small flocks is also large except in the south and west.

It appears in the light of these returns, however, that the increase must be at least a third over last year. Such an increase would bring the total of turkeys up to over the 20,000,000 mark. This would be a top crop in the record.

Increased receipts of turkey meat in the country market will probably be considerably less than the increase in the number of turkeys raised this year. Knowledge by many producers of the market demands toward smaller birds, coupled with the present unsteady retailing prices for turkeys to feed, prices, and the absolute shortage of feed in some important turkey producing areas will tend toward disposal of birds at lower prices and lighter weights than in 1931.

Other Factors In 1931 and 1932 the previous years of large turkey production, the total supply of meat was somewhat greater than the supply now in prospect for the winter and spring months. The large supplies of pork, expected to develop in the late winter, should tend to give support to turkey prices for a longer period than for some turkey.

Owing to the big turkey crop this year, a rise in farm turkey prices cannot be expected. Prices in former years of heavy turkey production have tended to decline as the marketing season progresses, unless opening prices are quite low. August, farm prices were 15 cents per pound for turkeys compared with 13.1 cents in July, and in September they were 13.0 cents compared with 12.5 cents last year.

Comparing the general level of prices and particularly the level of other meats, September turkey prices were 12.5 cents. Farm prices of meat animals this fall are almost double those prevailing in 1931 and 1932, while those for turkeys are only about one-half as high as in the two previous years of large turkey production. They are also low compared with other meats.

Attendance in the Junior High school was reported practically normal by Superintendent J. P. Deane, but the senior class school attendance is at its best school year.

Report cards for the elementary school were given by Superintendent Deane, but the senior class school attendance is at its best school year.

Attendance in the Junior High school was reported practically normal by Superintendent J. P. Deane, but the senior class school attendance is at its best school year.

Attendance in the Junior High school was reported practically normal by Superintendent J. P. Deane, but the senior class school attendance is at its best school year.

Hurling Knives at Stars Made Mr. Clemente Rich

BY ESKRINE JOHNSON (NEA Service)

HOLLYWOOD'S "When ever a star requires a number of knives through the air and land in the villain's back," or miss the recurring theme by which the stars are made rich, the great who does it is the knife-thrower. For 15 years this dark, black-checked Mexican Indian, who has been in the act for 15 years, has been making a fortune out of it. Mr. Clemente hasn't hurt anybody yet, but a lot of stars are hit by knives when they get through. Doubles are used when possible, just in case, but often the knives are used to demonstrate the presence of the stars themselves.

Wallace Berry, Frances Drake, George Rogers, James Crawford, and three Polynesian dogs started throwing knives at the stars. Whoever there has trusted his ability to throw a knife at a star, he has been hit. It is no easy feat to throw a knife at a star.

Mr. Clemente, who lives in a little white house with his wife and three Polynesian dogs started throwing knives as a hobby while punching cattle in Arizona. Later he was hit for good by a knife when he was in the act of throwing a knife at a star.

One of his hits was a star who was hit in the chest. The knife was thrown from a distance of 100 feet and hit the star in the chest. The star was hit in the chest and the knife was thrown from a distance of 100 feet.

Another tough job which Clemente succeeded in accomplishing occurred several years ago in an early stage of his career. He was playing guitar and the director wanted a knife to zip through the air and land in the star's back. He did it.

He threw a knife at a star who was hit in the chest. The knife was thrown from a distance of 100 feet and hit the star in the chest. The star was hit in the chest and the knife was thrown from a distance of 100 feet.

He threw a knife at a star who was hit in the chest. The knife was thrown from a distance of 100 feet and hit the star in the chest. The star was hit in the chest and the knife was thrown from a distance of 100 feet.

He threw a knife at a star who was hit in the chest. The knife was thrown from a distance of 100 feet and hit the star in the chest. The star was hit in the chest and the knife was thrown from a distance of 100 feet.

He threw a knife at a star who was hit in the chest. The knife was thrown from a distance of 100 feet and hit the star in the chest. The star was hit in the chest and the knife was thrown from a distance of 100 feet.

He threw a knife at a star who was hit in the chest. The knife was thrown from a distance of 100 feet and hit the star in the chest. The star was hit in the chest and the knife was thrown from a distance of 100 feet.

He threw a knife at a star who was hit in the chest. The knife was thrown from a distance of 100 feet and hit the star in the chest. The star was hit in the chest and the knife was thrown from a distance of 100 feet.

He threw a knife at a star who was hit in the chest. The knife was thrown from a distance of 100 feet and hit the star in the chest. The star was hit in the chest and the knife was thrown from a distance of 100 feet.

He threw a knife at a star who was hit in the chest. The knife was thrown from a distance of 100 feet and hit the star in the chest. The star was hit in the chest and the knife was thrown from a distance of 100 feet.



Mr. Clemente, who lives in a little white house with his wife and three Polynesian dogs started throwing knives as a hobby while punching cattle in Arizona.

Hollywood's act knife-thrower, Steve Clemente, is shown above in the act of throwing a knife at a star. The knife is completely covered by a small square of wood in the center. I throw the knife. Most of the time I can make it stick in the wood. If it misses, it hits the star's back, and we try it again.

Has 100 Knives Steve makes his knives to suit his throwing action and has nearly 100 in a trunk which he can't show. If they don't have cutting edges, just sharp points. These knives have made Steve rich. His own knives all over Los Angeles and Hollywood.

When he isn't working in the movies, Mr. Clemente travels around the country and to China and Australia with a regular act. In addition to knives he throws chopping axes, picks, pointed shovels, and wheelbarrows. He can outline a girl with picks, put out a candle with an axe and pin a playing card to a wall with a shovel.

He says his knife assistants never get quite because of having lost their nerve. "Women are funny," he says. "They never get cold feet. But I have to fire lots of them. They soon get the idea they're stars of the act, not me."

GCC FIGHTS ILL BLIGHT WASHINGTON (AP)—A campaign being waged by the Civilian Conservation Corps and the Bureau of Plant Industry at Morristown, N. J., is being advanced to eradicate the Dutch elm disease from areas in eastern states.

The specimen, an extinct bird, laid an egg that was equal to a gross of hen eggs. "No Hatching" signs for sale at Evening Times office, thru for \$50.

He threw a knife at a star who was hit in the chest. The knife was thrown from a distance of 100 feet and hit the star in the chest. The star was hit in the chest and the knife was thrown from a distance of 100 feet.

He threw a knife at a star who was hit in the chest. The knife was thrown from a distance of 100 feet and hit the star in the chest. The star was hit in the chest and the knife was thrown from a distance of 100 feet.

He threw a knife at a star who was hit in the chest. The knife was thrown from a distance of 100 feet and hit the star in the chest. The star was hit in the chest and the knife was thrown from a distance of 100 feet.

He threw a knife at a star who was hit in the chest. The knife was thrown from a distance of 100 feet and hit the star in the chest. The star was hit in the chest and the knife was thrown from a distance of 100 feet.

He threw a knife at a star who was hit in the chest. The knife was thrown from a distance of 100 feet and hit the star in the chest. The star was hit in the chest and the knife was thrown from a distance of 100 feet.

ARTIST RAPS AT U. S. "HUMILITY"

Tells America to Get Bid of Inferiority Complex and Create New Forms

ST. LOUIS (Special)—Durling of St. Louis, noted artist, believes that America should discard its "inferiority complex" and create new forms of American art and encourage artists of this nation to create new means and forms of expression.

Mr. Durling has prepared two, at the Cranbrook Academy of Art, near Detroit, where she will work with Carl Milles, noted sculptor.

Mrs. Durling believes that a background of tradition for American artists may be of some value in the development of art in this nation in the future. It is true that American artists have no tradition to fall back on, she said, but that can be helped as well as a hindrance. We are free of tradition, free to experiment, to create new means and forms of expression.

Worked in England She spent the summer in England, working in the shop of an English artist, and has learned a great deal about the tools and working in all sorts of stone. An artist herself, and one who

has experimented widely with all media of art, Mrs. Durling has her own opinions on the progress of American art. She says: "It is time for America to get over an inferiority complex to which artists abroad expose. They don't like to see us groveling at their feet whenever the subject of art comes up. They are trying to be self-respecting, to realize that we are creating an American culture."

Urges Independent Courts "They know we have as good artists as they have. They feel that we are inferior to them. We are curious in the way we treat our artists. For the most part, we ignore them as a vital part of our life, but then we spot a few and we make a fuss of them. We are a little bit like the American Gothic" very much but we have been publicized. We'll have twenty little "Great Works" now instead of a few more strongly individual artists.

"If only we could get over the idea that artists are such strange people, if we could treat them just as we do other workers, except, of course, that we don't pay them, but allowing them by our interest, without expecting them to jump on us, momentarily, as world-shaking geniuses!"

Big Manchuria Crop WASHINGTON (AP)—The 1931 soybean crop of Manchuria, the first estimated at 4,200,000 short tons, compared with a final estimate of 3,000,000 short tons for the crop of 1932, according to a radio report to the department of commerce from the American commercial attaché at Shanghai.

COURAGE SHOWN BY ANCIENT MEN

Pre-Historic Traces Indicate Humans Killed Mammoths With Spears

CLOVIS, N. M. (AP)—The Folsom man, who roamed the high plains of Texas and New Mexico 10,000 years ago, lacked neither courage nor ingenuity. Members of a great expedition from the Academy of Natural Sciences at Philadelphia, the Carnegie Institute of Washington and the University Museum of Philadelphia found traces of the prehistoric man's prowess in Blaine, Idaho, last summer.

Several specimens of the long-toothed elephants uncovered carried the stone head from a Folsom man's spear. At least one showed every evidence of having died from a thrust of the human crude weapon.

Fract of Skull Proved Dr. Edgar B. Howard, associate paleontologist at the Academy, said the discovery of elephants killed with a spear was the first ever made. "The bone points apparently are the first of their kind to be found with pre-historic elephants," said Howard's statement. "Evidence of the early hunters' beautiful workmanship may be seen in the carefully chipped stone spear points which are in perfect condition some 10,000 years later."

"One can picture the prehistoric mammoth, bugged in the swamp that once covered the site of the present excavation, being finished off by the deadly stone spear of the Folsom hunters."

The occurrence of so many weapons and tools in place with the elephant bones precludes any doubt that man existed on the continent at the same time as the mammoth. The date may be estimated as approximately 8,000 B. C.

The summer expedition was the second made by Dr. Howard and his associates. He visited the Blaine-Idaho area three years ago. Last year, excavations were made in the Scandinavian countries of Europe in an effort to find the Folsom man ever inhabited those regions.

Dan Sweeney, former Denver newspaperman and at present in the employ of the Rupert factory of the Amalgamated Sugar company, who severely scalded his ankle more than a week ago when he accidentally stepped into a basin of hot syrup at the factory, is being treated in the Rupert general hospital after having been discharged Saturday.

Mrs. M. A. Moore, Hyrum, was admitted to the Rupert general hospital Tuesday for medical treatment.

Re-shingling of the roof of the Coolman mortuary which was begun here nearly a week ago, was completed Wednesday. "Single shingles" were used in the re-shingling.

Resident of Burley Marries at Logan

BURLEY, Oct. 23 (Special)—

Clarence Whitehead, manager of the Whitehead furniture stores here and at Rupert, was married Tuesday afternoon to Mrs. Hazel R. Hansen of Brigham City. The wedding took place at Logan in the L. D. S. temple.

The couple are old friends, having known each other since their childhood. They will spend a few days in Utah and then will return to make their home here.

Knoll Grange Holds Halloween Party Knoll Grange met Wednesday evening at the school house for a Halloween costume party with 50 members present. Prizes for the best costumes were won by Mrs. E. A. Colbert and F. S. Campbell. In contests awards went to Mrs. E. L. Nybom and Mark Knoll.

At the close of the evening refreshments were served.

We buy Pop Corn on cob. Globe Seed & Feed Co. Adv.

Actually medicated with throat-soothing ingredients of Vicks VapoRub.

VICKS COUGH DROP

At the close of the evening refreshments were served.

We buy Pop Corn on cob. Globe Seed & Feed Co. Adv.

Actually medicated with throat-soothing ingredients of Vicks VapoRub.

VICKS COUGH DROP



Announcing the
LINCOLN-ZEPHYR V-12
for 1937

NEW LOW PRICES FROM \$1090

This new car, the LINCOLN-ZEPHYR V-12 for 1937, has a year's superb record behind it. But it is still years ahead of the times! It is not a new model. It is the car, refined and improved, that plouered a new type of transportation. It looks into the future to give new value today!

- This year, more than ever, the LINCOLN-ZEPHYR is priced below its specifications. In modern design 12-cylinder power, safety, interior roominess, comfort and convenience, it sets entirely new standards in this field. And as it breaks with tradition in value, so it breaks with tradition in design!
- No other car has the LINCOLN-ZEPHYR's beauty. And beauty, here, has a reason. Rematch the swift flowing streamlines of the LINCOLN-ZEPHYR. It's a welded one-piece structure unique in the automotive world!

• Powering this unusual car is the Lincoln-built engine. It is of the V-type—has twelve cylinders —is built along the Lincoln engine in the Lincoln precision plant. It is the Lincoln built engine of the medium-price field. Its 110 horse power is more than sufficient, because of the car's aero-dynamic design and light weight, to give performance new and stimulating.

14 to 18 Miles per Gallon

For all its size, for all its power, the LINCOLN-ZEPHYR is running up amazing records on the road. Owners report 14 to 18 miles per gallon. Credit is due not to the engine's economy alone, but to streamlining, and a high power-to-weight ratio.

- Talk with the neighbor who has a LINCOLN-ZEPHYR. Get his impressions. You'll find that the LINCOLN-ZEPHYR's motor is in the lead.
- You'll find that the LINCOLN-ZEPHYR's motor is in the lead.
- You'll find that the LINCOLN-ZEPHYR's motor is in the lead.

Why the LINCOLN-ZEPHYR V-12 stands out.

- V-type 12-cylinder-110-horsepower engine.
- Body and frame in a single steel unit.
- Wheelbase 122 inches; Spring base 133 inches.
- Low center of gravity.
- Conventional running-board eliminated—allowing greater body width.
- A five-speed slide shift on a 14 to 18 miles per gallon.
- Built by Lincoln in the Lincoln plant.
- "Flowing" lines—no sharp angles, no "kinks" in the body.
- Wide choice of body styles.
- Lincoln's "Quality" is a fact.
- Lincoln's "Quality" is a fact.
- Lincoln's "Quality" is a fact.

Detweiler Bros.
Phone 809

PA COLLEGE FOOTBALLERS OPENLY, NOTED WRITER URGES

Ranks 41 Major Schools As 'Pro'; Commends Yale

By LESLIE AVERY. NEW YORK, Oct. 23 (UP)—John R. Tunis, well known sports writer crusading for more pay for college football stars...

U. S. B. FAVORED TO WHIP INDIANS Southern Cal Holds Big Odds On Beating Huskies

By JAMES S. SHEEHY. United Press Staff Correspondent. Southern California's revitalized gridiron campaigners today returned to California...

Some believe Stanford money was shown by those who believe the Indians have lost their edge...

Washington State will be favored to win for several reasons although an upset would not be surprising...

U. C. L. A. rated over Oregon State at Los Angeles and Idaho at Pullman...

Other scheduled games include Colorado at Albany, Gonzaga Normal at Cheney...

Madigan Sure St. Mary's Will Defeat Buns; Jim Crowley Books Booring Punch

FOOT-LOOSE AND FANCY FREE IN BIG BRID BATTLES



Goalways for those touchdown makers Saturday: Left above is Quarterback Larry Ford of Georgia Tech...

Football Schedule

SATURDAY, OCT. 24 (Home Teams Listed First; 1935 Score Follows) Arizona vs. New Mex. State...

Pigskin Picks

GAME—Arkansas vs. Oklahoma, 20-0. Col. Idaho-Whitman 25-0. U. S. B. -Ricks 14-0...

5 OF UNBEATEN PICKED TO LOSE

Eleven Teams With Undeclared Records Favored to Blay In Perfect Blow

5 OF UNBEATEN PICKED TO LOSE

The teams which will suffer their first setbacks are Fordham, Purdue, Marquette, North Carolina and Georgetown...

STRIKES NATIONAL TRIMS TO RESERVE POWER BOWLERS

Bill Ford Faces Laundry Five To Victory; Questionnaires Conquer Safarines

NATIONAL TRIMS—SPT With Bill Ford leading the way, National League bowlers continued to trim...

COMMERCIAL LEAGUE National Laundry 129 229 229 229. A. Puglione 144 203 177 633...

WILL TENNIS TITLES—BILLS, OCT. 23 (Special)—Harry Lovar won the boys' singles tennis title...

Jerome Suspended From Athletics By State Board Order

Outside Contests Barred as Result of Using Ineligible Player

JEROME, Oct. 23 (Special)—Because Jerome Tigers inadvertently used an ineligible player, the state board of control today had suspended this high school here from participation in outside athletic contests...

MIDGET CARS GO TO BOISE SUNDAY

Twin Falls Drivers Will Give Capital City First View Of Tiny Speedsters

Twin Falls midget racing car drivers and owners will give Boise its first taste of the miniature speedsters that thrilled over 1,000 watchers at Twin Falls last Saturday...

OLICKMAN ON GRIBBORN

ETELACHUR, N. Y. (Special)—Mary Olickman, U. S. Olympian sprinter, is back on Syracuse University's football squad...

SCARLET HORSE IS RIGHT

Clouds do not burst during a downpour; raindrops held up by current currents suddenly fall when the currents weaken.

Hollbrook STRAIGHT BOURBON WHISKEY. A large advertisement for Hollbrook whiskey featuring a bottle illustration and descriptive text.

GAELS, FORDHAM IN FINAL DRILLS. A large advertisement for Gaelic football featuring a photograph of a player and promotional text.

WYOMING FINDS JOBS PLENTYFUL

Scouting Men to Fill Skilled Posts Growing Difficult, As Times Get Better

CHYENNE, Wyo., (UP)—Jobs are plentiful in Wyoming for applicants who are qualified and finding men to fill all available positions is becoming a difficult task, according to State Employment Service Director Tracy A. Shaw.

Available jobs for qualified men and women were listed as follows:

Motor operators for road construction.

Farm and ranch help for the bean, corn and potato harvest.

Domestic employees who can furnish references.

Expected, capable and reliable machinists, mechanics and workers for similar jobs.

Jobs for Able-Bodied

"A call for 100 able-bodied qualified men and women is being made by our office," Shaw said. "Of course, there are some who will not be unemployed, but they have not qualified for jobs due to mere lack of age handicaps or improper training."

Wage increases are expected shortly, because of the scarcity of help, Shaw indicated.

Employers can obtain the highest wages in recent years for their services.

In two fields, however, Shaw said the picture was not so promising.

Death conditions have made it necessary for many people to seek work in their home regions to "keep going," and the employment picture is not bright.

A building slump in Chyenne and other cities had resulted in the unemployment of many carpenters, bricklayers and other trades workers.

Road Projects Opened

Road building is being provided on road projects for many farmers by the state and federal governments.

Building has picked up some but not enough to entirely relieve the situation, Shaw said.

Chyenne's two C C C camps have been re-opened, and their present locations through-out the winter and both will add 17 new workers to the rolls, according to E. S. Mosher, project superintendent.

Improvement programs are to be continued, Mosher said.

Worsening conditions in the national social security program's unemployment insurance have been postponed until some time next year, Gov. Leslie A. Miller's decision is expected to call for a special session of the legislature.

Soap and Water Help Your Hair, Expert Asserts

BY ALICIA HART (NEA Service)

The theory of keeping the hair clean is by washing it with soap and water," writes Dr. Oscar Levin in his new book, "Keep Your Hair On."

"Washing never did and never will harm the hair," Dr. Levin continues. "It does not dry the scalp, it does not dry the hair, it keeps the hair growing and it does not cause an increase in dandruff. On the contrary, soap and water simply clean and do not lose their historic property when coming in contact with the scalp and hair."

How Often?

"Normally the scalp should be washed twice a week, but, if infection is present, once a day. Washings are more often not too much. People with dry hair claim that washing is not good for them. The truth is that if they washed their hair more frequently the scalp condition which causes dandruff might then have a chance to be cured."

In the same chapter, Dr. Levin says that massage of the scalp—light and moderate—should be done just as much as a ritual as washing the hair. He points out that "massage stimulates hair growth by causing a freshening rush of blood to the scalp, permeating all the tissues that have to do with the growth of the hair."

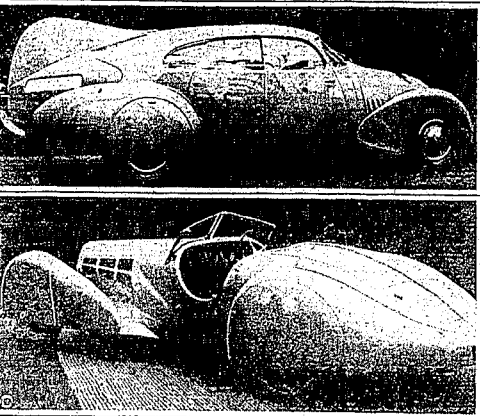
He explains that loosens the scalp granules, restores good circulation and promotes growth.

Other Hints

"In addition to 10-minute-massage-twice-a-day rubs, Dr. Levin says several other things from a nurse's point of view are important to men, as well as a woman, in keeping their hair and scalp healthy and attractive. Here are some of them:

- 1. Use your own comb and brush.
- 2. Avoid hair cream. Brushing cannot be overdone, and it must become part of a daily routine.
- 3. The best soaps to use on the scalp and hair are castile and medicated.
- 4. "Por-bar" with a tendency to dryness, the best is one that can be used in the water.
- 5. After the shampoo, rinse, shampoo or cream, rinse with plain water.
- 6. Do not use a comb or brush on wet hair.
- 7. Do not use hair cream on wet hair.
- 8. Do not use hair cream on dry hair.
- 9. Do not use hair cream on itchy scalp.
- 10. Do not use hair cream on a scalp that is cracked or chapped.
- 11. Do not use hair cream on a scalp that is sunburned.
- 12. Do not use hair cream on a scalp that is irritated.
- 13. Do not use hair cream on a scalp that is inflamed.
- 14. Do not use hair cream on a scalp that is infected.
- 15. Do not use hair cream on a scalp that is diseased.

Here's Auto Streamlining in French Style



If you think that America has gone ultra-streamlined in its automobile models you ought to see Paris. The well-to-do Frenchmen with a flair for the extreme will drive something like this in the next year probably the Peugeot, top bearing a real resemblance to the newer type of airplanes, or the Bugatti, below featured by improved aerodynamic design. These pictures were taken at the 30th annual Paris motor show.

KTFI PROGRAM

- 12:10 to 1:00 weeks
- FRIDAY, OCT. 23
- 6:00 National campaign news by Henry Dvorak.
 - 6:15 Ray Noble and his orch.
 - 6:30 Evening Times News Flash.
 - 6:45 Waitless by Whitman.
 - 7:00 "The Mystic."
 - 7:15 Happiness Boys.
 - 7:30 Worldwide Transradio news flash.
 - 7:45 Studebaker Champions.
 - 8:00 Harry Hargrave shows.
 - 8:00 Reno Racesters from Reno.
 - 8:00 Evening request hour.
 - 10:00 Reno Racesters from Reno.
 - 10:00 Signing off time.

SATURDAY, OCT. 24

- 6:00 Ambrose and his orchestra.
 - 6:15 Organ Settlements.
 - 6:30 Evening Times News flashes.
 - 6:45 Waitless by Whitman.
 - 7:00 Crosby Vocalists.
 - 7:15 Adventures of Jungle Jim.
 - 7:30 World's Wide Trans Radio.
 - 7:45 Studebaker Champions.
 - 8:00 "The Mystic." What does it mean to you? Talk.
 - 8:15 National Cavaliers.
 - 8:30 American Family Robinson.
 - 8:45 Harmony Isle.
 - 9:00 Baseball Orchestra.
 - 10:00 Evening Request Hour.
 - 11:00 Ambassadors from Hosieland.
 - 12:00 Signing off time.
- SUNDAY, OCT. 25
- 6:00 Melody Trio.
 - 10:15 Reading of the Contests.
 - 10:30 Yacobi and Herding with Philip Pack.
 - 10:45 Dan Hunter and his orchestra.
 - 11:00 Organ Settlements.
 - 11:15 Bina Momen's Glee Club.
 - 11:30 Selections from "The Cat" & "The Music."
 - 11:45 Religious Choir Singing.
 - 12:00 Hancock and her grand piano.
 - 12:15 Goldman band concert.
 - 12:30 Richard Goetzli Vocalist.
 - 12:45 Roy Fox and his Orchestra.
 - 1:00 Dan Hunter and his orchestra.
 - 1:15 Girls of the Golden West.
 - 1:30 Victor Concert Orchestra.
 - 1:45 Bowlers.
 - 2:00 Fox's Water Popular Piano.
 - 2:15 Ruth-Batling Popular Vocalist.
 - 2:30 Sunbelt Temple on the Air.
 - 3:00 Sunshine Gospel Hour.
 - 3:30 Ford and Ginn.
 - 4:15 Shep Fields and his Orchestra.
 - 4:30 Treasured Strings.
 - 4:45 Adventures of Jungle Jim.
 - 5:00 Maria Dan Helin's River Riddles.
 - 5:30 Evening Light Broadway.
 - 6:00 Popular Melodist of the Day.
 - 6:15 Ice & Rose.
 - 6:30 Musical Road.
 - 7:00 Organ Settlements.
 - 7:15 Sophisticated Favorites.
 - 7:30 World's Wide Trans Radio News Flashes.
 - 7:45 Sunbelt Temple on the Air.
 - 8:00 Reno Racesters.
 - 8:30 Treasured Strings.
 - 9:00 Ambassadors from Hosieland.
 - 10:00 Evening Request Hour.
 - 11:00 Signing Off Time.

MONDAY, OCT. 28

- 6:00 Farmers Breakfast Club presents the Reno Racesters.
- 6:30 Ford and Home Flashes.
- 6:45 Musical Road.
- 7:00 Murning Devotionalists.
- 7:15 World's Wide Trans Radio News.
- 7:30 Mr. and Mrs. Hugh Cross.
- 7:45 Jimmie Grier Dance Music.
- 8:00 South Sea Islanders.
- 8:00 Louis James Vocalist.
- 8:15 Opening Market Quotation.
- 8:30 Ford and Home Flashes.
- 8:45 Treasured Strings.
- 9:00 Murning Devotionalists.
- 9:15 Morning Melodist.
- 9:30 Jimmie Grier Dance Music.
- 10:30 Maubtain Concert Band.
- 11:00 Sunbelt Temple on the Air.
- 11:15 Reno Racesters with the Cowboy.
- 11:30 Victor Concert Orchestra.
- 11:45 Treasured Strings.
- 12:00 Dick Ford Popular Vocalist.

Invention Makes Pedestrian Glad Car Smacks Him

By FREDERICK C. OTHMAN

WASHINGTON, Oct. 23 (UP)—The bumper and fender, Solomon and Harry, of New York, "loopy" patented a device which makes it a pleasure, a joy and a positive delight to be struck by an automobile.

When every motorist is equipped with their invention, patent No. 2,252,939, this nation cannot help but become a pedestrian paradise land. Inventors will beg for the privilege of being bumped by a Horowitz bumper de luxe, children will cry for it, and walking against the road will be more fun than riding a roller coaster.

Slightly Complicated.

This boon to humanity is a little complicated and it looks like it might be expensive, but whatever the cost it is worth it. Say you are crossing Broadway at 42nd street, or Michigan boulevard, or some other busy thoroughfare when a Horowitz-equipped car approaches.

You are reading a newspaper as you walk along, unconcerned. The car is traveling 20 miles an hour and it can't stop. So! It is a bumper, a bumper, a bumper, which puts a reverberating "BOOM" on your forehead, faint, and fall in a puddle of your own blood? Not a bit. You are not hurt, you are thoughtful of the driver. He comes to a stop, he says "Thank you very much, things happen, and happen quickly, but not for you."

Seat Hises Up

A neatly upholstered seat rises up, as the car stops, and catches you on the rebound.

You feel a little more chair and your weight therein sets off a trigger which starts some machinery moving for your benefit. The trigger pulls a lever, which causes a heavy spring, which puts a on the four-wheel brakes.

The car which hit you rolls to an easy halt. You step out of the chair. It collapses into a neat bundle behind the Horowitz bumper. That cools the trigger, the spring returns to its resting place, the brakes are released, and you thank the motorist who ran into you.

"That's all right, old man," he replies as he drives off, ready for another collision and blood clean fun on the highway.

More about motorists have been found in Kansas than in Illinois, Oklahoma, Utah, Massachusetts, Washington, Idaho, Oregon, North Dakota, Wyoming, Nevada, New Jersey, New York, Pennsylvania, Montana, and Minnesota, combined.

There were no signals in the early days of railroading, and the engineer met on a single track they had to argue it out. Later a post and beam erected midway between the signals so that "he who passed the pillar must go on, and the other go back."

CANAS PRAIRIE PIONEER BURIED

FAIRFIELD, Oct. 23 (Special)—Funeral services were held today afternoon for Albert Hull, 80, pioneer mining man and resident of Canas prairie since 1884. Interment was in Mountain View cemetery here the grave of his sister, Mrs. Hull was born Feb. 16, 1846 and came to California when a small child with his parents. He came to Canas prairie in 1865 and discovered the first coal and iron in the area. He was a pioneer miner near here for 15 years and was active in the California gold fields and in Boise basin mining.

He is only known survivor in a place living in Tacoma, Wash.

Buy With Confidence Drive With Satisfaction

50 Money-Back Guaranteed Used Cars to Make Your Selection From

- 1931 DESOTO SIX SEDAN Special for: \$225
 - *Tomorrow Only
 - 1930 CHEVROLET COUPE Special for: \$169
 - *Tomorrow Only
 - 1933 CHEVROLET COUPE Special for: \$335
 - *Tomorrow Only
 - 1934 FORD TUDOR SEDAN New motor, new finish, new tires. Special for Tomorrow Only \$425
 - 35 V-8 Ford Deluxe Sedan \$485
 - 36 V-8 Deluxe Coupe \$450
 - 37 V-8 Deluxe Ford Sedan \$450
 - 38 Chrysler Coupe \$425
 - 39 Chrysler Six Sedan \$350
 - 40 Nash Six Coupe \$350
 - 41 Nash Six Sedan \$325
 - 42 Nash 8 Sedan \$325
 - 43 Nash Six Coupe \$345
 - 44 V-8 Pickup \$215
 - 45 Chevrolet Truck \$265
 - 46 Ford Sedan, very good \$265
 - 47 Chevrolet Sedan \$ 85
 - 48 Chevrolet Sedan \$125
 - 49 Ford Victoria \$465
 - 50 Ford Pickup \$345
 - 51 Ford Truck, new motor \$375
 - 52 Ford Truck \$370
 - 53 Chevy Truck \$370
 - 54 Ford Truck, stake body \$325
 - 55 Ford Truck \$ 85
- Buy With Confidence—Drive With Satisfaction
October: Is the Month to Drive a Bargain!

Union Motor Co. Your FORD Dealer

ENGLAND FACING FARM PROBLEM

Growers Preparing to Protest Interests Against Flood From Dominions

LONDON (UP)—British farmers are preparing to protest their interest against the flood of produce from the Dominions when the Ottawa agreements arise next year.

There is a strong body of opinion among them that closer control of the Dominion's production of dairy and general farm produce from the Dominions is necessary.

According to the National Farmers' Union in taking action to protest the National Committee for the Council of the N. F. U. has decided to apply to the Imperial duties advisory committee for duties on all imported meat and livestock, and all poultry products irrespective of the country of origin.

Seek Standard Price

An official of the United Kingdom, however, this action was not intended to disturb the quantity of the British producer, but to insure a standard and a remunerative price for home and foreign producers. The Union has not suggested that the proceeds of any new or additional tariffs on farm products should be confiscated as a way to subsidize the British producer.

Meanwhile, Tom Wise, president of the National Federation of Meat Traders' association has anticipated the launching of a great "Eat More Meat" campaign. He declared plans involving the expenditure of many thousands of pounds to stimulate public demand for the meat of the Dominion's. Smithfield Market, London, the Wholesale Meat Trade Federation and meat importing firms are conferred with the National Federation of Meat Traders' association regarding means of raising enough money for a really comprehensive "eat more meat" campaign.

WHALE KILLS DIVER

PERTH, West Australia (UP)—A 30-foot Japanese steel diver of a Western Australian fishing fleet, was drowned when a whale fouled his air line while he was 100 feet under water.

The most beautiful hand ever painted in generally recognized as the right hand of man, done by Leonardo da Vinci.

Swagger Swing



DEVICE DETECTS STATIC IN FILMS

Electric "Bloodhound" Farrot Out Interferences During Picture Making

HOLLYWOOD (UP)—Meet the "electric bloodhound"—a device that catches sound recording engineers to "smell" interference with the noise of movie studios. "Arying" in the sound track which nobody could locate until the "bloodhound" was brought in.

Science's latest contribution to perfect talking pictures, the "Bloodhound" consists of a series of electrical coils, surrounding a magnetic needle, such as used in a compass. The faintest electrical disturbance near causes the little needle to dance, thereby enabling engineers to detect and eliminate hum and buzz that distort the "I love you."

The earphones added a third sense to the sound man's faculty. Before, he only could hear and see screen voices—hear through his earphones and see the transferred result of his recording needle. Now he can see the herd's subtle dance. Figuratively, at least.

Developed in the Metro-Goldwyn-

DEVICE DETECTS STATIC IN FILMS

Electric "Bloodhound" Farrot Out Interferences During Picture Making

HOLLYWOOD (UP)—Meet the "electric bloodhound"—a device that catches sound recording engineers to "smell" interference with the noise of movie studios. "Arying" in the sound track which nobody could locate until the "bloodhound" was brought in.

Science's latest contribution to perfect talking pictures, the "Bloodhound" consists of a series of electrical coils, surrounding a magnetic needle, such as used in a compass. The faintest electrical disturbance near causes the little needle to dance, thereby enabling engineers to detect and eliminate hum and buzz that distort the "I love you."

The earphones added a third sense to the sound man's faculty. Before, he only could hear and see screen voices—hear through his earphones and see the transferred result of his recording needle. Now he can see the herd's subtle dance. Figuratively, at least.

Developed in the Metro-Goldwyn-

RADIO SET ON BICYCLE

QUINCY, Mass.—Russell Patterson, 17, can ride his bicycle and listen to the radio at the same time. He constructed a sending and receiving radio set and mounted it on his bike.

Beavers have a split nail; the second toe of each foot; this is used as a comb and toothpick.

DINE'S QUALITY COAL

Known for its Cleanliness . . . Why Have Soot to Contend With? Use Dines and Check Our Statement.

Cash Prices at Yard—

LUMP	\$8.50	NUT	\$7.75
STOVE	\$8.50	PEA	\$6.50

PEACOCK BLACK \$6.00

DELIVERED 75c TON

IDASALES, Inc.
PHONE 375 110 R. R. AVE.

Have you

EYES that weigh values at leisure? LIPS that respond to real merit?

Old Kentucky
Straight Bourbon Whiskey

If your eyes are on the lookout for a really extraordinary whiskey value... and your lips would like to taste downright luxury... don't fail to ask for this "double-rich" straight Bourbon of Old Kentucky!

COHENBERRY
PINT
QUART

Old Kentucky
Straight Bourbon Whiskey

COHENBERRY DISTILLERS, INC., NEW YORK

INAUGURAL WILL COME IN WINTER

President Will Take Oath On Jan. 20; Bad Weather Is More Probable

BY EDWARD LEWIS

WASHINGTON, Oct. 23 (UP)—The next inauguration of the United States will be held in the first time in history, will be inaugurated in mid-winter—Jan. 20, instead of March 4, as a result of the Norris "time duck" amendment...

Visitor Here



Justus Alfred Dudge, who is touring this section in the interests of his political action as a member of the non-partisan court on the non-partisan ticket.

ROSS PROMISES IDAHO VIGILANCE

Assures Voters He Will Labor For Gem State and Not for 'Foreign Countries'

MEDICIAN, Idaho, Oct. 23 (UP)—Sen. C. E. Ross, Democratic candidate for U. S. senator, today said his final northern Idaho campaign drive to succeed Sen. William E. Borah in a fighting speech before the voters of the state.

Ross said he built his campaign around the premise that Borah has become a national and third national figure and no longer content to serve the state's interests alone. "When I become United States senator, I am going to do things for this state, not for foreign countries."

The Monopoly Fight The governor has taken on the dean of the senators' favorite ground—monopoly. "When I become senator and find monopoly interfering with welfare, comfort and prosperity, will introduce a bill that will clarify and remedy the situation."

Two Candidates With Pluralities Lost Presidency

WASHINGTON, Oct. 23 (UP)—Twice since the Civil war the electoral college has elected a president who lost the popular vote.

In 1876 Rutherford B. Hayes was elected by an electoral vote of 185 to 103 for Samuel Tilden. Tilden had 1,000,000 more votes in the popular count.

In 1888 Grover Cleveland was elected by Benjamin Harrison, but the latter went to the White House. Cleveland had 2,000,000 more votes in the popular count.

In 1876 Rutherford B. Hayes was elected by an electoral vote of 185 to 103 for Samuel Tilden. Tilden had 1,000,000 more votes in the popular count.

Republican Rally Set For Monday

Mrs. Genevieve Doughty, Mrs. H. W. Cloush, Mrs. C. M. Krenzel and E. M. Sweeley are to be speakers at the open meeting and Republican rally to be held Monday at 2:30 p. m. in the Legion Memorial building under the sponsorship of the Women's Republican League of Twin Falls county.

POLL SHOWS AHEAD OF F. D. R.

Literary Digest's Straw Poll Finds Landon Ahead in '32, Roosevelt in '16

NEW YORK, Oct. 23 (UP)—The Literary Digest's annual tabulation of its presidential poll today showed Gov. Alf M. Landon leading in 22 states and President Hoover in 16, unchanged from last week.

The states in which Gov. Landon led in the Digest's straw vote poll were: Alaska, 54.7 per cent; Arizona, 54.7 per cent; Arkansas, 54.7 per cent; California, 54.7 per cent; Colorado, 54.7 per cent; Connecticut, 54.7 per cent; Delaware, 54.7 per cent; Florida, 54.7 per cent; Georgia, 54.7 per cent; Idaho, 54.7 per cent; Illinois, 54.7 per cent; Indiana, 54.7 per cent; Iowa, 54.7 per cent; Kansas, 54.7 per cent; Kentucky, 54.7 per cent; Louisiana, 54.7 per cent; Maine, 54.7 per cent; Maryland, 54.7 per cent; Massachusetts, 54.7 per cent; Michigan, 54.7 per cent; Minnesota, 54.7 per cent; Mississippi, 54.7 per cent; Missouri, 54.7 per cent; Montana, 54.7 per cent; Nebraska, 54.7 per cent; Nevada, 54.7 per cent; New Hampshire, 54.7 per cent; New Jersey, 54.7 per cent; New Mexico, 54.7 per cent; New York, 54.7 per cent; North Carolina, 54.7 per cent; North Dakota, 54.7 per cent; Ohio, 54.7 per cent; Oklahoma, 54.7 per cent; Oregon, 54.7 per cent; Pennsylvania, 54.7 per cent; Rhode Island, 54.7 per cent; South Carolina, 54.7 per cent; South Dakota, 54.7 per cent; Tennessee, 54.7 per cent; Texas, 54.7 per cent; Utah, 54.7 per cent; Virginia, 54.7 per cent; West Virginia, 54.7 per cent; Wisconsin, 54.7 per cent; Wyoming, 54.7 per cent.

ELECTORAL, POPULAR VOTE IN STATES IN 1932 ELECTION

Table with columns: State, Roosevelt (Popular Vote), Hoover (Electoral Vote), Roosevelt (Popular Vote), Hoover (Electoral Vote). Lists states from Alabama to Wyoming with corresponding vote counts.

ROOSEVELT HAD NO. 1 LANDSLIDE

F. D. R. Margin Over Hoover in 1932 Was Largest; 1876 Race Closest

WASHINGTON, Oct. 23 (UP)—The closest presidential election since the Civil war must be traced back to the Tilden-Hayes contest of 1876, but President Hoover's victory over the biggest landslide that of four years ago.

In contrast to Mr. Roosevelt's victory over Herbert Hoover—472 electoral votes to 166—F. D. R. in 1932 had 577 electoral votes to 166 for his Democratic opponent, Samuel Tilden.

Decided for Hayes An electoral commission decided in favor of Hayes, although the popular vote in the nation favored his opponent.

In 1932 Mr. Hoover carried only six states, four of them in New England.

The closest election of this century was that between Woodrow Wilson and Charles Evans Hughes in 1916. The outcome was in doubt for more than 24 hours, hinges ultimately on California's 13 votes.

President Wilson's final majority in that state was less than 4,000. Had California gone Republican, Hughes would have been elected by 267 electoral votes to 264 for Wilson.

Here's Electoral Total by States

Table with columns: State, Electoral Votes. Lists states from Alabama to Wyoming with their respective electoral vote counts.

DWORSHAK TALKS IDAY AT BUHL

Henry C. Dworshak, Burley, running for congressman on the Republican ticket, will speak at the party at the Okey Theater in Buhl Saturday at 8 p. m. It is announced by E. N. Pettygrove, Republican county chairman.

Appearing with him will be the legislative and county candidates. Another Republican rally will be staged when Ralph H. Breckers speaks Monday night at Castleford, accompanied also by legislative and county candidates.

REVIVE SPIRIT OF '49 IDEALISTS, Calif. (UP)—The spirit of '76 isn't entirely dead in California, Stanley M. Ellis and George Meade, Raymond county chairman, said today. They are of prominent local men left home, and are planning for the two weeks ahead.

REPUBLICAN RALLY

—BUHL— COZY THEATER, 8:00 P. M. SATURDAY, OCT. 24

Attorneys Praise Record of Justice

Judge Alfred Budge of the Idaho supreme court here at a campaign tour seeking reelection on the non-partisan ticket, was praised by local attorneys today as having made important contributions for more than 24 hours, hinges ultimately on California's 13 votes.

As a district judge he was called upon to sit on the bench at Hatley during determination of the suit of Frost vs. Alturas Water Co. and the Frost decree which affected the water rights of Wood River for that area now served by American Falls reservoir district No. 2 is considered basic in such cases. It is also pointed out that as a member of the supreme court he wrote the opinion which upheld the validity of American Falls reservoir district No. 2's right to issue general obligation bonds, in the suit of Thrall vs. the district seeking to prevent the sale.

This was the first time such a question has ever been passed upon. It is stated, and opinion cleared the way to the creation of the district No. 2's right to issue general obligation bonds, in the suit of Thrall vs. the district seeking to prevent the sale.

The states in which Gov. Landon led in the Digest's straw vote poll were: Alaska, 54.7 per cent; Arizona, 54.7 per cent; Arkansas, 54.7 per cent; California, 54.7 per cent; Colorado, 54.7 per cent; Connecticut, 54.7 per cent; Delaware, 54.7 per cent; Florida, 54.7 per cent; Georgia, 54.7 per cent; Idaho, 54.7 per cent; Illinois, 54.7 per cent; Indiana, 54.7 per cent; Iowa, 54.7 per cent; Kansas, 54.7 per cent; Kentucky, 54.7 per cent; Louisiana, 54.7 per cent; Maine, 54.7 per cent; Maryland, 54.7 per cent; Massachusetts, 54.7 per cent; Michigan, 54.7 per cent; Minnesota, 54.7 per cent; Mississippi, 54.7 per cent; Missouri, 54.7 per cent; Montana, 54.7 per cent; Nebraska, 54.7 per cent; Nevada, 54.7 per cent; New Hampshire, 54.7 per cent; New Jersey, 54.7 per cent; New Mexico, 54.7 per cent; New York, 54.7 per cent; North Carolina, 54.7 per cent; North Dakota, 54.7 per cent; Ohio, 54.7 per cent; Oklahoma, 54.7 per cent; Oregon, 54.7 per cent; Pennsylvania, 54.7 per cent; Rhode Island, 54.7 per cent; South Carolina, 54.7 per cent; South Dakota, 54.7 per cent; Tennessee, 54.7 per cent; Texas, 54.7 per cent; Utah, 54.7 per cent; Virginia, 54.7 per cent; West Virginia, 54.7 per cent; Wisconsin, 54.7 per cent; Wyoming, 54.7 per cent.

Henry Dworshak For CONGRESS Discussing National Issues in the Campaign. Republican County Ticket will be presented. Hear One of Idaho's Ablest Men. REPUBLICAN COUNTY CENTRAL COMMITTEE

Students Select Dems and Borah

BOISE, Oct. 23 (UP)—Idaho is going to elect a solidly Democratic ticket, with a Republican in the United States senatorial race, a straw poll conducted at Boise Junior college is an indication of the statewide trend.

Sen. William E. Borah, Idaho's veteran senator, was the only Republican in the vote. He defeated Gov. C. Ben Ross by a 3-2 margin. President Roosevelt defeated Landon by the same margin.

Under the constitution a majority of the electoral votes—262 out of 531 this year—must be cast for someone to insure his election. In a third election, therefore, it is possible for the entire election to be thrown into the hands of representatives. The house would vote by state delegations—each state having one vote—to select a President.

At least a majority of the electoral votes is required, there is no such requirement as to the popular vote. For instance, Woodrow Wilson in 1912 had only a plurality of the popular vote, the vote being split by Taft and Roosevelt, 3.

By Way Pop Corn an orb. Globe Seed & Feed Co. Adv.

SATURDAY SPECIAL Complete Lubrication

Not Merely Greased but Thoroughly Lubricated

1. Pressure lubrication of all moving parts equipped with lubricating connections.

2. Full oil cups with proper amount of lubrication.

3. Use of Check-Chart assembly.

4. Oiling hood leading down and up.

5. Oiling crank, piston, distributor and starter motor.

6. Lubricating door hinges, locks, windows and clamps.

7. Oiling steering and speed adjustment rods.

8. Oiling brake rods, shock and starter pedal bearings.

9. Lubricating wheel bearings.

10. Oiling body bolts and nuts.

11. Lubricating steering gear housing.

12. Lubricating wheel bearings.

13. Spraying or painting spring assemblies with penetrating oil.

14. Oiling steering and speed adjustment rods.

15. Oiling brake rods, shock and starter pedal bearings.

16. Lubricating wheel bearings.

17. Oiling body bolts and nuts.

HAZELTON

Mrs. H. P. Ross entertained the Hazelton Garden club at her home yesterday with Mrs. Edna Hanson presiding. After the business meeting, Mrs. Cyril Goddard presided over the Hazelton Garden club at her home yesterday with Mrs. Edna Hanson presiding.

Mrs. J. E. Kinnick entertained the Ladies Aid society of the Presbyterian church at her home Wednesday with Mrs. Edna Hanson presiding. After the business meeting, Mrs. Cyril Goddard presided over the Hazelton Garden club at her home yesterday with Mrs. Edna Hanson presiding.

Mrs. J. E. Kinnick entertained the Ladies Aid society of the Presbyterian church at her home Wednesday with Mrs. Edna Hanson presiding. After the business meeting, Mrs. Cyril Goddard presided over the Hazelton Garden club at her home yesterday with Mrs. Edna Hanson presiding.

Mrs. J. E. Kinnick entertained the Ladies Aid society of the Presbyterian church at her home Wednesday with Mrs. Edna Hanson presiding. After the business meeting, Mrs. Cyril Goddard presided over the Hazelton Garden club at her home yesterday with Mrs. Edna Hanson presiding.

Mrs. J. E. Kinnick entertained the Ladies Aid society of the Presbyterian church at her home Wednesday with Mrs. Edna Hanson presiding. After the business meeting, Mrs. Cyril Goddard presided over the Hazelton Garden club at her home yesterday with Mrs. Edna Hanson presiding.

Mrs. J. E. Kinnick entertained the Ladies Aid society of the Presbyterian church at her home Wednesday with Mrs. Edna Hanson presiding. After the business meeting, Mrs. Cyril Goddard presided over the Hazelton Garden club at her home yesterday with Mrs. Edna Hanson presiding.

Mrs. J. E. Kinnick entertained the Ladies Aid society of the Presbyterian church at her home Wednesday with Mrs. Edna Hanson presiding. After the business meeting, Mrs. Cyril Goddard presided over the Hazelton Garden club at her home yesterday with Mrs. Edna Hanson presiding.

Mrs. J. E. Kinnick entertained the Ladies Aid society of the Presbyterian church at her home Wednesday with Mrs. Edna Hanson presiding. After the business meeting, Mrs. Cyril Goddard presided over the Hazelton Garden club at her home yesterday with Mrs. Edna Hanson presiding.

Mrs. J. E. Kinnick entertained the Ladies Aid society of the Presbyterian church at her home Wednesday with Mrs. Edna Hanson presiding. After the business meeting, Mrs. Cyril Goddard presided over the Hazelton Garden club at her home yesterday with Mrs. Edna Hanson presiding.

Mrs. J. E. Kinnick entertained the Ladies Aid society of the Presbyterian church at her home Wednesday with Mrs. Edna Hanson presiding. After the business meeting, Mrs. Cyril Goddard presided over the Hazelton Garden club at her home yesterday with Mrs. Edna Hanson presiding.

Mrs. J. E. Kinnick entertained the Ladies Aid society of the Presbyterian church at her home Wednesday with Mrs. Edna Hanson presiding. After the business meeting, Mrs. Cyril Goddard presided over the Hazelton Garden club at her home yesterday with Mrs. Edna Hanson presiding.

Mrs. J. E. Kinnick entertained the Ladies Aid society of the Presbyterian church at her home Wednesday with Mrs. Edna Hanson presiding. After the business meeting, Mrs. Cyril Goddard presided over the Hazelton Garden club at her home yesterday with Mrs. Edna Hanson presiding.

Mrs. J. E. Kinnick entertained the Ladies Aid society of the Presbyterian church at her home Wednesday with Mrs. Edna Hanson presiding. After the business meeting, Mrs. Cyril Goddard presided over the Hazelton Garden club at her home yesterday with Mrs. Edna Hanson presiding.

Mrs. J. E. Kinnick entertained the Ladies Aid society of the Presbyterian church at her home Wednesday with Mrs. Edna Hanson presiding. After the business meeting, Mrs. Cyril Goddard presided over the Hazelton Garden club at her home yesterday with Mrs. Edna Hanson presiding.

Mrs. J. E. Kinnick entertained the Ladies Aid society of the Presbyterian church at her home Wednesday with Mrs. Edna Hanson presiding. After the business meeting, Mrs. Cyril Goddard presided over the Hazelton Garden club at her home yesterday with Mrs. Edna Hanson presiding.

Mrs. J. E. Kinnick entertained the Ladies Aid society of the Presbyterian church at her home Wednesday with Mrs. Edna Hanson presiding. After the business meeting, Mrs. Cyril Goddard presided over the Hazelton Garden club at her home yesterday with Mrs. Edna Hanson presiding.

Mrs. J. E. Kinnick entertained the Ladies Aid society of the Presbyterian church at her home Wednesday with Mrs. Edna Hanson presiding. After the business meeting, Mrs. Cyril Goddard presided over the Hazelton Garden club at her home yesterday with Mrs. Edna Hanson presiding.

Mrs. J. E. Kinnick entertained the Ladies Aid society of the Presbyterian church at her home Wednesday with Mrs. Edna Hanson presiding. After the business meeting, Mrs. Cyril Goddard presided over the Hazelton Garden club at her home yesterday with Mrs. Edna Hanson presiding.

POLL SHOWS AHEAD OF F. D. R.

Literary Digest's Straw Poll Finds Landon Ahead in '32, Roosevelt in '16

NEW YORK, Oct. 23 (UP)—The Literary Digest's annual tabulation of its presidential poll today showed Gov. Alf M. Landon leading in 22 states and President Hoover in 16, unchanged from last week.

The states in which Gov. Landon led in the Digest's straw vote poll were: Alaska, 54.7 per cent; Arizona, 54.7 per cent; Arkansas, 54.7 per cent; California, 54.7 per cent; Colorado, 54.7 per cent; Connecticut, 54.7 per cent; Delaware, 54.7 per cent; Florida, 54.7 per cent; Georgia, 54.7 per cent; Idaho, 54.7 per cent; Illinois, 54.7 per cent; Indiana, 54.7 per cent; Iowa, 54.7 per cent; Kansas, 54.7 per cent; Kentucky, 54.7 per cent; Louisiana, 54.7 per cent; Maine, 54.7 per cent; Maryland, 54.7 per cent; Massachusetts, 54.7 per cent; Michigan, 54.7 per cent; Minnesota, 54.7 per cent; Mississippi, 54.7 per cent; Missouri, 54.7 per cent; Montana, 54.7 per cent; Nebraska, 54.7 per cent; Nevada, 54.7 per cent; New Hampshire, 54.7 per cent; New Jersey, 54.7 per cent; New Mexico, 54.7 per cent; New York, 54.7 per cent; North Carolina, 54.7 per cent; North Dakota, 54.7 per cent; Ohio, 54.7 per cent; Oklahoma, 54.7 per cent; Oregon, 54.7 per cent; Pennsylvania, 54.7 per cent; Rhode Island, 54.7 per cent; South Carolina, 54.7 per cent; South Dakota, 54.7 per cent; Tennessee, 54.7 per cent; Texas, 54.7 per cent; Utah, 54.7 per cent; Virginia, 54.7 per cent; West Virginia, 54.7 per cent; Wisconsin, 54.7 per cent; Wyoming, 54.7 per cent.

The states in which Gov. Landon led in the Digest's straw vote poll were: Alaska, 54.7 per cent; Arizona, 54.7 per cent; Arkansas, 54.7 per cent; California, 54.7 per cent; Colorado, 54.7 per cent; Connecticut, 54.7 per cent; Delaware, 54.7 per cent; Florida, 54.7 per cent; Georgia, 54.7 per cent; Idaho, 54.7 per cent; Illinois, 54.7 per cent; Indiana, 54.7 per cent; Iowa, 54.7 per cent; Kansas, 54.7 per cent; Kentucky, 54.7 per cent; Louisiana, 54.7 per cent; Maine, 54.7 per cent; Maryland, 54.7 per cent; Massachusetts, 54.7 per cent; Michigan, 54.7 per cent; Minnesota, 54.7 per cent; Mississippi, 54.7 per cent; Missouri, 54.7 per cent; Montana, 54.7 per cent; Nebraska, 54.7 per cent; Nevada, 54.7 per cent; New Hampshire, 54.7 per cent; New Jersey, 54.7 per cent; New Mexico, 54.7 per cent; New York, 54.7 per cent; North Carolina, 54.7 per cent; North Dakota, 54.7 per cent; Ohio, 54.7 per cent; Oklahoma, 54.7 per cent; Oregon, 54.7 per cent; Pennsylvania, 54.7 per cent; Rhode Island, 54.7 per cent; South Carolina, 54.7 per cent; South Dakota, 54.7 per cent; Tennessee, 54.7 per cent; Texas, 54.7 per cent; Utah, 54.7 per cent; Virginia, 54.7 per cent; West Virginia, 54.7 per cent; Wisconsin, 54.7 per cent; Wyoming, 54.7 per cent.

The states in which Gov. Landon led in the Digest's straw vote poll were: Alaska, 54.7 per cent; Arizona, 54.7 per cent; Arkansas, 54.7 per cent; California, 54.7 per cent; Colorado, 54.7 per cent; Connecticut, 54.7 per cent; Delaware, 54.7 per cent; Florida, 54.7 per cent; Georgia, 54.7 per cent; Idaho, 54.7 per cent; Illinois, 54.7 per cent; Indiana, 54.7 per cent; Iowa, 54.7 per cent; Kansas, 54.7 per cent; Kentucky, 54.7 per cent; Louisiana, 54.7 per cent; Maine, 54.7 per cent; Maryland, 54.7 per cent; Massachusetts, 54.7 per cent; Michigan, 54.7 per cent; Minnesota, 54.7 per cent; Mississippi, 54.7 per cent; Missouri, 54.7 per cent; Montana, 54.7 per cent; Nebraska, 54.7 per cent; Nevada, 54.7 per cent; New Hampshire, 54.7 per cent; New Jersey, 54.7 per cent; New Mexico, 54.7 per cent; New York, 54.7 per cent; North Carolina, 54.7 per cent; North Dakota, 54.7 per cent; Ohio, 54.7 per cent; Oklahoma, 54.7 per cent; Oregon, 54.7 per cent; Pennsylvania, 54.7 per cent; Rhode Island, 54.7 per cent; South Carolina, 54.7 per cent; South Dakota, 54.7 per cent; Tennessee, 54.7 per cent; Texas, 54.7 per cent; Utah, 54.7 per cent; Virginia, 54.7 per cent; West Virginia, 54.7 per cent; Wisconsin, 54.7 per cent; Wyoming, 54.7 per cent.

The states in which Gov. Landon led in the Digest's straw vote poll were: Alaska, 54.7 per cent; Arizona, 54.7 per cent; Arkansas, 54.7 per cent; California, 54.7 per cent; Colorado, 54.7 per cent; Connecticut, 54.7 per cent; Delaware, 54.7 per cent; Florida, 54.7 per cent; Georgia, 54.7 per cent; Idaho, 54.7 per cent; Illinois, 54.7 per cent; Indiana, 54.7 per cent; Iowa, 54.7 per cent; Kansas, 54.7 per cent; Kentucky, 54.7 per cent; Louisiana, 54.7 per cent; Maine, 54.7 per cent; Maryland, 54.7 per cent; Massachusetts, 54.7 per cent; Michigan, 54.7 per cent; Minnesota, 54.7 per cent; Mississippi, 54.7 per cent; Missouri, 54.7 per cent; Montana, 54.7 per cent; Nebraska, 54.7 per cent; Nevada, 54.7 per cent; New Hampshire, 54.7 per cent; New Jersey, 54.7 per cent; New Mexico, 54.7 per cent; New York, 54.7 per cent; North Carolina, 54.7 per cent; North Dakota, 54.7 per cent; Ohio, 54.7 per cent; Oklahoma, 54.7 per cent; Oregon, 54.7 per cent; Pennsylvania, 54.7 per cent; Rhode Island, 54.7 per cent; South Carolina, 54.7 per cent; South Dakota, 54.7 per cent; Tennessee, 54.7 per cent; Texas, 54.7 per cent; Utah, 54.7 per cent; Virginia, 54.7 per cent; West Virginia, 54.7 per cent; Wisconsin, 54.7 per cent; Wyoming, 54.7 per cent.

The states in which Gov. Landon led in the Digest's straw vote poll were: Alaska, 54.7 per cent; Arizona, 54.7 per cent; Arkansas, 54.7 per cent; California, 54.7 per cent; Colorado, 54.7 per cent; Connecticut, 54.7 per cent; Delaware, 54.7 per cent; Florida, 54.7 per cent; Georgia, 54.7 per cent; Idaho, 54.7 per cent; Illinois, 54.7 per cent; Indiana, 54.7 per cent; Iowa, 54.7 per cent; Kansas, 54.7 per cent; Kentucky, 54.7 per cent; Louisiana, 54.7 per cent; Maine, 54.7 per cent; Maryland, 54.7 per cent; Massachusetts, 54.7 per cent; Michigan, 54.7 per cent; Minnesota, 54.7 per cent; Mississippi, 54.7 per cent; Missouri, 54.7 per cent; Montana, 54.7 per cent; Nebraska, 54.7 per cent; Nevada, 54.7 per cent; New Hampshire, 54.7 per cent; New Jersey, 54.7 per cent; New Mexico, 54.7 per cent; New York, 54.7 per cent; North Carolina, 54.7 per cent; North Dakota, 54.7 per cent; Ohio, 54.7 per cent; Oklahoma, 54.7 per cent; Oregon, 54.7 per cent; Pennsylvania, 54.7 per cent; Rhode Island, 54.7 per cent; South Carolina, 54.7 per cent; South Dakota, 54.7 per cent; Tennessee, 54.7 per cent; Texas, 54.7 per cent; Utah, 54.7 per cent; Virginia, 54.7 per cent; West Virginia, 54.7 per cent; Wisconsin, 54.7 per cent; Wyoming, 54.7 per cent.

The states in which Gov. Landon led in the Digest's straw vote poll were: Alaska, 54.7 per cent; Arizona, 54.7 per cent; Arkansas, 54.7 per cent; California, 54.7 per cent; Colorado, 54.7 per cent; Connecticut, 54.7 per cent; Delaware, 54.7 per cent; Florida, 54.7 per cent; Georgia, 54.7 per cent; Idaho, 54.7 per cent; Illinois, 54.7 per cent; Indiana, 54.7 per cent; Iowa, 54.7 per cent; Kansas, 54.7 per cent; Kentucky, 54.7 per cent; Louisiana, 54.7 per cent; Maine, 54.7 per cent; Maryland, 54.7 per cent; Massachusetts, 54.7 per cent; Michigan, 54.7 per cent; Minnesota, 54.7 per cent; Mississippi, 54.7 per cent; Missouri, 54.7 per cent; Montana, 54.7 per cent; Nebraska, 54.7 per cent; Nevada, 54.7 per cent; New Hampshire, 54.7 per cent; New Jersey, 54.7 per cent; New Mexico, 54.7 per cent; New York, 54.7 per cent; North Carolina, 54.7 per cent; North Dakota, 54.7 per cent; Ohio, 54.7 per cent; Oklahoma, 54.7 per cent; Oregon, 54.7 per cent; Pennsylvania, 54.7 per cent; Rhode Island, 54.7 per cent; South Carolina, 54.7 per cent; South Dakota, 54.7 per cent; Tennessee, 54.7 per cent; Texas, 54.7 per cent; Utah, 54.7 per cent; Virginia, 54.7 per cent; West Virginia, 54.7 per cent; Wisconsin, 54.7 per cent; Wyoming, 54.7 per cent.

The states in which Gov. Landon led in the Digest's straw vote poll were: Alaska, 54.7 per cent; Arizona, 54.7 per cent; Arkansas, 54.7 per cent; California, 54.7 per cent; Colorado, 54.7 per cent; Connecticut, 54.7 per cent; Delaware, 54.7 per cent; Florida, 54.7 per cent; Georgia, 54.7 per cent; Idaho, 54.7 per cent; Illinois, 54.7 per cent; Indiana, 54.7 per cent; Iowa, 54.7 per cent; Kansas, 54.7 per cent; Kentucky, 54.7 per cent; Louisiana, 54.7 per cent; Maine, 54.7 per cent; Maryland, 54.7 per cent; Massachusetts, 54.7 per cent; Michigan, 54.7 per cent; Minnesota, 54.7 per cent; Mississippi, 54.7 per cent; Missouri, 54.7 per cent; Montana, 54.7 per cent; Nebraska, 54.7 per cent; Nevada, 54.7 per cent; New Hampshire, 54.7 per cent; New Jersey, 54.7 per cent; New Mexico, 54.7 per cent; New York, 54.7 per cent; North Carolina, 54.7 per cent; North Dakota, 54.7 per cent; Ohio, 54.7 per cent; Oklahoma, 54.7 per cent; Oregon, 54.7 per cent; Pennsylvania, 54.7 per cent; Rhode Island, 54.7 per cent; South Carolina, 54.7 per cent; South Dakota, 54.7 per cent; Tennessee, 54.7 per cent; Texas, 54.7 per cent; Utah, 54.7 per cent; Virginia, 54.7 per cent; West Virginia, 54.7 per cent; Wisconsin, 54.7 per cent; Wyoming, 54.7 per cent.

The states in which Gov. Landon led in the Digest's straw vote poll were: Alaska, 54.7 per cent; Arizona, 54.7 per cent; Arkansas, 54.7 per cent; California, 54.7 per cent; Colorado, 54.7 per cent; Connecticut, 54.7 per cent; Delaware, 54.7 per cent; Florida, 54.7 per cent; Georgia, 54.7 per cent; Idaho, 54.7 per cent; Illinois, 54.7 per cent; Indiana, 54.7 per cent; Iowa, 54.7 per cent; Kansas, 54.7 per cent; Kentucky, 54.7 per cent; Louisiana, 54.7 per cent; Maine, 54.7 per cent; Maryland, 54.7 per cent; Massachusetts, 54.7 per cent; Michigan, 54.7 per cent; Minnesota, 54.7 per cent; Mississippi, 54.7 per cent; Missouri, 54.7 per cent; Montana, 54.7 per cent; Nebraska, 54.7 per cent; Nevada, 54.7 per cent; New Hampshire, 54.7 per cent; New Jersey, 54.7 per cent; New Mexico, 54.7 per cent; New York, 54.7 per cent; North Carolina, 54.7 per cent; North Dakota, 54.7 per cent; Ohio, 54.7 per cent; Oklahoma, 54.7 per cent; Oregon, 54.7 per cent; Pennsylvania, 54.7 per cent; Rhode Island, 54.7 per cent; South Carolina, 54.7 per cent; South Dakota, 54.7 per cent; Tennessee, 54.7 per cent; Texas, 54.7 per cent; Utah, 54.7 per cent; Virginia, 54.7 per cent; West Virginia, 54.7 per cent; Wisconsin, 54.7 per cent; Wyoming, 54.7 per cent.

The states in which Gov. Landon led in the Digest's straw vote poll were: Alaska, 54.7 per cent; Arizona, 54.7 per cent; Arkansas, 54.7 per cent; California, 54.7 per cent; Colorado, 54.7 per cent; Connecticut, 54.7 per cent; Delaware, 54.7 per cent; Florida, 54.7 per cent; Georgia, 54.7 per cent; Idaho, 54.7 per cent; Illinois, 54.7 per cent; Indiana, 54.7 per cent; Iowa, 54.7 per cent; Kansas, 54.7 per cent; Kentucky, 54.7 per cent; Louisiana, 54.7 per cent; Maine, 54.7 per cent; Maryland, 54.7 per cent; Massachusetts, 54.7 per cent; Michigan, 54.7 per cent; Minnesota, 54.7 per cent; Mississippi, 54.7 per cent; Missouri, 54.7 per cent; Montana, 54.7 per cent; Nebraska, 54.7 per cent; Nevada, 54.7 per cent; New Hampshire, 54.7 per cent; New Jersey, 54.7 per cent; New Mexico, 54.7 per cent; New York, 54.7 per cent; North Carolina, 54.7 per cent; North Dakota, 54.7 per cent; Ohio, 54.7 per cent; Oklahoma, 54.7 per cent; Oregon, 54.7 per cent; Pennsylvania, 54.7 per cent; Rhode Island, 54.7 per cent; South Carolina, 54.7 per cent; South Dakota, 54.7 per cent; Tennessee, 54.7 per cent; Texas, 54.7 per cent; Utah, 54.7 per cent; Virginia, 54.7 per cent; West Virginia, 54.7 per cent; Wisconsin, 54.7 per cent; Wyoming, 54.7 per cent.

The states in which Gov. Landon led in the Digest's straw vote poll were: Alaska, 54.7 per cent; Arizona, 54.7 per cent; Arkansas, 54.7 per cent; California, 54.7 per cent; Colorado, 54.7 per cent; Connecticut, 54.7 per cent; Delaware, 54.7 per cent; Florida, 54.7 per cent; Georgia, 54.7 per cent; Idaho, 54.7 per cent; Illinois, 54.7 per cent; Indiana, 54.7 per cent; Iowa, 54.7 per cent; Kansas, 54.7 per cent; Kentucky, 54.7 per cent; Louisiana, 54.7 per cent; Maine, 54.7 per cent; Maryland, 54.7 per cent; Massachusetts, 54.7 per cent; Michigan, 54.7 per cent; Minnesota, 54.7 per cent; Mississippi, 54.7 per cent; Missouri, 54.7 per cent; Montana, 54.7 per cent; Nebraska, 54.7 per cent; Nevada,

It's Easy to Buy, Rent, Sell or Trade With

CLASSIFIED

Today's Markets and Financial News

LIVESTOCK WHEAT TRAGS IN SLOW TURNOVER N. Y. STOCKS STOCKS ADVANCE TO SMALL GAINS

AUTOMOBILES G.M.C. Van Truck, Good condition, after 1000 miles...

FOR SALE—MISCELLANEOUS No better bargain anywhere...

MISCELLANEOUS Dry, acetylene and electric welding...

Classified Directory Responsible Business Firms and Professions of Twin Falls

BUY NOW! 28 Chev. Coupe—runs good, new paint...

FOR SALE—MISCELLANEOUS Sure You Can Keep 'Real Good'...

FOR SALE—MISCELLANEOUS 80 ACRES—A.E. of Twin Falls...

FOR SALE—MISCELLANEOUS AUTO DOOR GLASS WINDOW GLASS AND WINDOW GLASS

O'CONNOR 818 Shoshone West

FOR SALE OR TRADE Other potato digger, nearly new...

FOR SALE—MISCELLANEOUS AUTO DOOR GLASS WINDOW GLASS AND WINDOW GLASS

FOR SALE—MISCELLANEOUS AUTO DOOR GLASS WINDOW GLASS AND WINDOW GLASS

FOR RENT—ROOMS 2 furnished room, 350 Fifth East...

FOR SALE—MISCELLANEOUS 1000 Model Buick coupe, 516 w/wh...

FOR SALE—MISCELLANEOUS AUTO DOOR GLASS WINDOW GLASS AND WINDOW GLASS

FOR SALE—MISCELLANEOUS AUTO DOOR GLASS WINDOW GLASS AND WINDOW GLASS

BOARD AND ROOM Board and room for 2 \$7 per week...

FOR SALE—MISCELLANEOUS 1000 Model Buick coupe, 516 w/wh...

FOR SALE—MISCELLANEOUS AUTO DOOR GLASS WINDOW GLASS AND WINDOW GLASS

FOR SALE—MISCELLANEOUS AUTO DOOR GLASS WINDOW GLASS AND WINDOW GLASS

HELP WANTED—MALE Slat roofer, Phone 1226.

FOR SALE—MISCELLANEOUS 1000 Model Buick coupe, 516 w/wh...

FOR SALE—MISCELLANEOUS AUTO DOOR GLASS WINDOW GLASS AND WINDOW GLASS

FOR SALE—MISCELLANEOUS AUTO DOOR GLASS WINDOW GLASS AND WINDOW GLASS

REFRIGERATION—AIR CONDITIONING—Division Mgr. Dept. of Agriculture...

FOR SALE—MISCELLANEOUS 1000 Model Buick coupe, 516 w/wh...

FOR SALE—MISCELLANEOUS AUTO DOOR GLASS WINDOW GLASS AND WINDOW GLASS

FOR SALE—MISCELLANEOUS AUTO DOOR GLASS WINDOW GLASS AND WINDOW GLASS

DELICIOUS APPLES All grades, 1 1/2 to 2 1/2 cts. per bushel...

FOR SALE—MISCELLANEOUS 1000 Model Buick coupe, 516 w/wh...

FOR SALE—MISCELLANEOUS AUTO DOOR GLASS WINDOW GLASS AND WINDOW GLASS

FOR SALE—MISCELLANEOUS AUTO DOOR GLASS WINDOW GLASS AND WINDOW GLASS

DELICIOUS APPLES All grades, 1 1/2 to 2 1/2 cts. per bushel...

FOR SALE—MISCELLANEOUS 1000 Model Buick coupe, 516 w/wh...

FOR SALE—MISCELLANEOUS AUTO DOOR GLASS WINDOW GLASS AND WINDOW GLASS

FOR SALE—MISCELLANEOUS AUTO DOOR GLASS WINDOW GLASS AND WINDOW GLASS

DELICIOUS APPLES All grades, 1 1/2 to 2 1/2 cts. per bushel...

FOR SALE—MISCELLANEOUS 1000 Model Buick coupe, 516 w/wh...

FOR SALE—MISCELLANEOUS AUTO DOOR GLASS WINDOW GLASS AND WINDOW GLASS

FOR SALE—MISCELLANEOUS AUTO DOOR GLASS WINDOW GLASS AND WINDOW GLASS

DELICIOUS APPLES All grades, 1 1/2 to 2 1/2 cts. per bushel...

FOR SALE—MISCELLANEOUS 1000 Model Buick coupe, 516 w/wh...

FOR SALE—MISCELLANEOUS AUTO DOOR GLASS WINDOW GLASS AND WINDOW GLASS

FOR SALE—MISCELLANEOUS AUTO DOOR GLASS WINDOW GLASS AND WINDOW GLASS

DELICIOUS APPLES All grades, 1 1/2 to 2 1/2 cts. per bushel...

FOR SALE—MISCELLANEOUS 1000 Model Buick coupe, 516 w/wh...

FOR SALE—MISCELLANEOUS AUTO DOOR GLASS WINDOW GLASS AND WINDOW GLASS

FOR SALE—MISCELLANEOUS AUTO DOOR GLASS WINDOW GLASS AND WINDOW GLASS

DELICIOUS APPLES All grades, 1 1/2 to 2 1/2 cts. per bushel...

FOR SALE—MISCELLANEOUS 1000 Model Buick coupe, 516 w/wh...

FOR SALE—MISCELLANEOUS AUTO DOOR GLASS WINDOW GLASS AND WINDOW GLASS

FOR SALE—MISCELLANEOUS AUTO DOOR GLASS WINDOW GLASS AND WINDOW GLASS

DENVER LIVESTOCK DENVER, Oct. 23 (UP)—The market closed higher...

WHEAT TRAGS IN SLOW TURNOVER CHICAGO, Oct. 23 (UP)—Wheat trading continued slow on the Chicago board...

N. Y. STOCKS NEW YORK, Oct. 23 (UP)—The market closed higher...

STOCKS ADVANCE TO SMALL GAINS NEW YORK, Oct. 23 (UP)—The market advanced fractions to more than a point in drag...

CHICAGO LIVESTOCK CHICAGO, Oct. 23 (UP)—Hogs: 100 lbs. steady; 120 lbs. to \$9.85...

GRAIN TABLE CHICAGO, Oct. 23 (UP)—Grain market...

OMAHA LIVESTOCK OMAHA, Oct. 23 (UP) (USDA) Hogs: 100 lbs. steady; 120 lbs. to \$9.85...

BUYING PRICES Soft wheat, Grade 55, \$1.60; Hard wheat, Grade 55, \$1.60...

PAINTING—DECORATING Kalamazing and general painting...

SHOE REPAIRING Good work in shoe. Let us repair your family shoes...

PERSONAL Young lady driving to Pomona, Calif. with used car...

WANTED—MISCELLANEOUS Wanted—Homeowner and boarder...

REAL ESTATE FOR SALE 18 acres, long time payments...

BUTTER, EGGS SAN FRANCISCO SAN FRANCISCO, Cal. (UP)—Butter: 92 score 34c; 96 score 34 1/2c...

LOS ANGELES LIVESTOCK LOS ANGELES, Oct. 23 (UP)—Hogs: 100 lbs. steady; 120 lbs. to \$9.85...

ATTENTION FARMERS! Will Call for and Pay Cash for Dried or Washed HOBSES—COWS—SHEEP and HOGS...

WANTED TO BUY Wanted—True loss of choppe...

WANT TO SELL We buy Pop Cans of Choppe Seed & Feed Co.

WANT TO SELL We buy Pop Cans of Choppe Seed & Feed Co.

WANT TO SELL We buy Pop Cans of Choppe Seed & Feed Co.

WANT TO SELL We buy Pop Cans of Choppe Seed & Feed Co.

WANT TO SELL We buy Pop Cans of Choppe Seed & Feed Co.

WANT TO SELL We buy Pop Cans of Choppe Seed & Feed Co.

WANT TO SELL We buy Pop Cans of Choppe Seed & Feed Co.

WANT TO SELL We buy Pop Cans of Choppe Seed & Feed Co.

WANT TO SELL We buy Pop Cans of Choppe Seed & Feed Co.

WANT TO SELL We buy Pop Cans of Choppe Seed & Feed Co.

WANT TO SELL We buy Pop Cans of Choppe Seed & Feed Co.

WANT TO SELL We buy Pop Cans of Choppe Seed & Feed Co.

WANT TO SELL We buy Pop Cans of Choppe Seed & Feed Co.

WANT TO SELL We buy Pop Cans of Choppe Seed & Feed Co.

WANT TO SELL We buy Pop Cans of Choppe Seed & Feed Co.

WANT TO SELL We buy Pop Cans of Choppe Seed & Feed Co.

WANT TO SELL We buy Pop Cans of Choppe Seed & Feed Co.

WANT TO SELL We buy Pop Cans of Choppe Seed & Feed Co.

WANT TO SELL We buy Pop Cans of Choppe Seed & Feed Co.

WANT TO SELL We buy Pop Cans of Choppe Seed & Feed Co.

WANT TO SELL We buy Pop Cans of Choppe Seed & Feed Co.

WANT TO SELL We buy Pop Cans of Choppe Seed & Feed Co.

WANT TO SELL We buy Pop Cans of Choppe Seed & Feed Co.

WANT TO SELL We buy Pop Cans of Choppe Seed & Feed Co.

WANT TO SELL We buy Pop Cans of Choppe Seed & Feed Co.

WANT TO SELL We buy Pop Cans of Choppe Seed & Feed Co.

WANT TO SELL We buy Pop Cans of Choppe Seed & Feed Co.

WANT TO SELL We buy Pop Cans of Choppe Seed & Feed Co.

WANT TO SELL We buy Pop Cans of Choppe Seed & Feed Co.

WANT TO SELL We buy Pop Cans of Choppe Seed & Feed Co.

WANT TO SELL We buy Pop Cans of Choppe Seed & Feed Co.

WANT TO SELL We buy Pop Cans of Choppe Seed & Feed Co.

WANT TO SELL We buy Pop Cans of Choppe Seed & Feed Co.

WANT TO SELL We buy Pop Cans of Choppe Seed & Feed Co.

WANT TO SELL We buy Pop Cans of Choppe Seed & Feed Co.

WANT TO SELL We buy Pop Cans of Choppe Seed & Feed Co.

WANT TO SELL We buy Pop Cans of Choppe Seed & Feed Co.

WANT TO SELL We buy Pop Cans of Choppe Seed & Feed Co.

WANT TO SELL We buy Pop Cans of Choppe Seed & Feed Co.

WANT TO SELL We buy Pop Cans of Choppe Seed & Feed Co.

WANT TO SELL We buy Pop Cans of Choppe Seed & Feed Co.

WANT TO SELL We buy Pop Cans of Choppe Seed & Feed Co.

WANT TO SELL We buy Pop Cans of Choppe Seed & Feed Co.

THIS OXIOUS WORLD

By William Ferguson



HORNIBILLS HAVE SUCH NOXY-LIKE BILLS THAT THE CHINESE USE THEM IN MAKING... (HUMOROUS AND SARDONIC)

LIGHT IS NOT ENTIRELY ABSENT IN THE OCEAN DEPTHS UNTIL A LEVEL OF ABOUT 2000 FEET IS REACHED.

IN THE EXTREME TEMPERATURES OF THE POLAR REGIONS, ORDINARY CLOCKS CAN BE USED, IF ALL TRACES OF LUBRICANTS ARE REMOVED.

Although daylight fades from the ocean after a depth of less than half a mile, animal life continues down for thousands of feet below, where such creatures... (HUMOROUS AND SARDONIC)

OUR BOARDING HOUSE

with

Major Hoople

By Williams

Comic strip panels for 'OUR BOARDING HOUSE'. Panel 1: 'HUZZAH, LADS! BEFORE ANOTHER SUNSET I SHALL HAVE A COMPLETE WORKING MODEL OF MY INGENIOUS INVENTION...'. Panel 2: 'HERE'S OPPORTUNITY GIVING US THE RAP... LISTEN TO THIS... AN INMATE OF THE PADDED WARD ESCAPED IN A LAUNDRY BAG...'. Panel 3: 'WAIT TILL I GET A BAG OF ACORNS, AND WE'LL COAX HIM BACK TO HIS QUILTED STALL, AND CLAIM TH' COIN!'. Panel 4: 'JUST A BIT OF RIBBING ='. Panel 5: 'I THINK GOVERNOR... THAT WAS TH' DINNER...'. Panel 6: 'AH, HERE IT IS... SUCH AIR-CONDITIONED COMFORT...'. Panel 7: 'MOST REMARKABLE, MY DEAR SENATOR...'. Panel 8: 'OH, SIX CENTS... BUT THAT'S OK... THESE'S NO TRIFLING ON THIS TRAIN.'.

Comic strip panels for 'RIDERS CRAMP'. Panel 1: 'HA-THA, BIG LICK IS AGOIN' TO HAVE TO MOVE...'. Panel 2: 'OH, I SEE! RIDE OVER AND CHASE THOSE CATTLE BACK INTO THE HERD, EH?'. Panel 3: 'OH, NO! GAWSH, NO! JEST MOVE TO WHERE THESE'S MORE STONES...'. Panel 4: 'RIDERS CRAMP'. Panel 5: 'J.W. WILLIAMS 10-23'.

SIDE GLANCES

By George Clark



"Here we are, begin to get this little business on the foot, and you want me to fall in love with you?"

Comic strip panels for 'BOOTS AND HER BUDDIES'. Panel 1: 'OH, THIS IS THE LIFE...'. Panel 2: 'COME, SENATOR, LET US TAKE A STRIDLE THROUGH THE TRAIN...'. Panel 3: 'I BEG PARDON, SIR, IS THIS THE CLUB CAR?'. Panel 4: 'HUNT!'. Panel 5: 'I THINK GOVERNOR... THAT WAS TH' DINNER...'. Panel 6: 'AH, HERE IT IS... SUCH AIR-CONDITIONED COMFORT...'. Panel 7: 'MOST REMARKABLE, MY DEAR SENATOR...'. Panel 8: 'OH, SIX CENTS... BUT THAT'S OK... THESE'S NO TRIFLING ON THIS TRAIN.'.

Comic strip panels for 'BOOTS AND HER BUDDIES'. Panel 1: 'OH, THIS IS THE LIFE...'. Panel 2: 'COME, SENATOR, LET US TAKE A STRIDLE THROUGH THE TRAIN...'. Panel 3: 'I BEG PARDON, SIR, IS THIS THE CLUB CAR?'. Panel 4: 'HUNT!'. Panel 5: 'I THINK GOVERNOR... THAT WAS TH' DINNER...'. Panel 6: 'AH, HERE IT IS... SUCH AIR-CONDITIONED COMFORT...'. Panel 7: 'MOST REMARKABLE, MY DEAR SENATOR...'. Panel 8: 'OH, SIX CENTS... BUT THAT'S OK... THESE'S NO TRIFLING ON THIS TRAIN.'.

Comic strip panels for 'BOOTS AND HER BUDDIES'. Panel 1: 'OH, THIS IS THE LIFE...'. Panel 2: 'COME, SENATOR, LET US TAKE A STRIDLE THROUGH THE TRAIN...'. Panel 3: 'I BEG PARDON, SIR, IS THIS THE CLUB CAR?'. Panel 4: 'HUNT!'. Panel 5: 'I THINK GOVERNOR... THAT WAS TH' DINNER...'. Panel 6: 'AH, HERE IT IS... SUCH AIR-CONDITIONED COMFORT...'. Panel 7: 'MOST REMARKABLE, MY DEAR SENATOR...'. Panel 8: 'OH, SIX CENTS... BUT THAT'S OK... THESE'S NO TRIFLING ON THIS TRAIN.'.

Comic strip panels for 'ALLEY OOP'. Panel 1: 'WELL, NOW WE ANTFANY (I'LL ADMIT TH' LIZARDS CHASED BEFORE OOP...'. Panel 2: 'BY WHOOSH, FOOZLY, NOUR PLUMB RIGHT...'. Panel 3: 'WELL, OOOO... YES I THINK HE LOOKS AS IF HE HAS...'. Panel 4: 'C'MON, EVERYBODY-LE'S GIT DOWN WHERE WE CAN GRAB US A LITTLE FOOD AND WATER...'. Panel 5: 'NOW THAT OOPS... LIFTED OUR SIEGE...'. Panel 6: 'WHACKITY-WHACK, LES HOPE THAT HE DEWENT...'. Panel 7: 'AND NOW, YOU MAY AS WELL... MAKE YOURSELF COMFORTABLE HERE...'. Panel 8: 'A FINE MESS THIS IS... THOUSANDS OF FEET ABOVE...'. Panel 9: 'GIDDON HEROES'.

Comic strip panels for 'ALLEY OOP'. Panel 1: 'WELL, NOW WE ANTFANY (I'LL ADMIT TH' LIZARDS CHASED BEFORE OOP...'. Panel 2: 'BY WHOOSH, FOOZLY, NOUR PLUMB RIGHT...'. Panel 3: 'WELL, OOOO... YES I THINK HE LOOKS AS IF HE HAS...'. Panel 4: 'C'MON, EVERYBODY-LE'S GIT DOWN WHERE WE CAN GRAB US A LITTLE FOOD AND WATER...'. Panel 5: 'NOW THAT OOPS... LIFTED OUR SIEGE...'. Panel 6: 'WHACKITY-WHACK, LES HOPE THAT HE DEWENT...'. Panel 7: 'AND NOW, YOU MAY AS WELL... MAKE YOURSELF COMFORTABLE HERE...'. Panel 8: 'A FINE MESS THIS IS... THOUSANDS OF FEET ABOVE...'. Panel 9: 'GIDDON HEROES'.

Comic strip panels for 'ALLEY OOP'. Panel 1: 'WELL, NOW WE ANTFANY (I'LL ADMIT TH' LIZARDS CHASED BEFORE OOP...'. Panel 2: 'BY WHOOSH, FOOZLY, NOUR PLUMB RIGHT...'. Panel 3: 'WELL, OOOO... YES I THINK HE LOOKS AS IF HE HAS...'. Panel 4: 'C'MON, EVERYBODY-LE'S GIT DOWN WHERE WE CAN GRAB US A LITTLE FOOD AND WATER...'. Panel 5: 'NOW THAT OOPS... LIFTED OUR SIEGE...'. Panel 6: 'WHACKITY-WHACK, LES HOPE THAT HE DEWENT...'. Panel 7: 'AND NOW, YOU MAY AS WELL... MAKE YOURSELF COMFORTABLE HERE...'. Panel 8: 'A FINE MESS THIS IS... THOUSANDS OF FEET ABOVE...'. Panel 9: 'GIDDON HEROES'.

Distinguished Woman

Table with 3 columns: Name, Title, and other details. Includes names like Alice Roosevelt, Helen Hunt Jackson, etc.

Comic strip panels for 'THE BOARD'. Panel 1: 'THE BOARD...'. Panel 2: 'THE WAR...'. Panel 3: 'OH, IT HANST STARTED...'. Panel 4: 'AND NOW, YOU MAY AS WELL...'. Panel 5: 'A FINE MESS THIS IS...'. Panel 6: 'GIDDON HEROES'.

Comic strip panels for 'THE BOARD'. Panel 1: 'THE BOARD...'. Panel 2: 'THE WAR...'. Panel 3: 'OH, IT HANST STARTED...'. Panel 4: 'AND NOW, YOU MAY AS WELL...'. Panel 5: 'A FINE MESS THIS IS...'. Panel 6: 'GIDDON HEROES'.

Comic strip panels for 'THE BOARD'. Panel 1: 'THE BOARD...'. Panel 2: 'THE WAR...'. Panel 3: 'OH, IT HANST STARTED...'. Panel 4: 'AND NOW, YOU MAY AS WELL...'. Panel 5: 'A FINE MESS THIS IS...'. Panel 6: 'GIDDON HEROES'.

Large grid or puzzle area at the bottom left of the page.

Large grid or puzzle area at the bottom right of the page.

