

Navy Delays Salvage of Sunken Submarine

Bund Chief Accused Of Forgery, Theft, By N.Y. Grand Jury

District Attorney Dewey Terms Fritz Kuhn 'Common Thief,' Arrested In Flight

NEW YORK, May 25—Fritz Kuhn, leader of the pro-Nazi German American Bund, was arrested late today by New York detectives in Krumville, Pa., to answer a hastily returned indictment charging forgery and grand larceny totaling \$14,500.50.

Bergdoll Locked Up In Barracks

World War Draft Dodger Arrested On Liner By Military Officers

NEW YORK, May 25 (AP)—Cleveland Bergdoll, World War draft dodger, returned voluntarily to the United States today to face the punishment he evaded 10 years ago when he escaped military custody.

Guilt Admitted In Mass Murder

Three Men Confess; Seven Others Elect To Stand Trial

PHILADELPHIA, May 25 (AP)—Three men admitted a part in the east's widespread insurance-murder plots today, while seven defendants—two of them widows of poison victims—declined to plead guilty and will stand trial on murder charges.

Pocoatele Fire Razes Theater

Firemen Battle Blaze For Three Hours; Loss Estimated \$50,000

FLASHES of LIFE

By Associated Press. No Go. COLUMBUS, Ind.,—Without Harry Watkins wanted to "float" next Sunday in a car number 12.

Woman Chosen As Leader of Indians

PORT HALL, MAY 25 (AP)—Indian women have chosen Sarah P. Solpe, as elected as a member of the Tribal Council from the Pocatello district.

SOVIET PLANS EXPANSION OF WAR MACHINE

Moscow Announces Seven Billion Dollar Defense Budget; Britain Presses For Three-Power Front

(By The Associated Press) Soviet Russia, sought by Britain as a partner in a three-power front with France, last night announced a gigantic defense budget of 40,855,000,000 rubles (nominally \$17,727,205,000).

OPERATING Against Hazardous Currents

Hero Sacrifices Pal to Save Other Shipmates

CONGRESS SCANS SQUALUS SINKING

Committee Chairman Delays Action on Proposed Investigation

WASHINGTON, May 25 (AP)—A proposal today for a house investigation of the sinking of the submarine Squalus encountered immediate opposition from Chairman Vreeland of the house committee.

WARPLANES RAID China's Capital

CHUNKING, May 25 (AP)—Japanese aircrafts dropped 120 bombs in this provincial Chinese capital's crowded business district tonight, causing about 400 casualties and destroying 20 buildings.

Fishing Outlook Favorable

Barring flood waters that might be expected at the end of the month, streams will be low and clear as the fishing season opens Tuesday, May 30, a survey by the Southern Idaho Fish and Game commission.

Diving Bell Saves Sub Survivors



OPERATING against hazardous currents and at a depth of 240 feet, a newly designed diving bell, for the first time in history, was successful in removing survivors from a sunken submarine.

32 of Squalus Survivors Owe Lives to Youth's Superhuman Effort in Closing Door

PORTSMOUTH, N. H., May 25 (AP)—The heart-rending task of closing a watertight compartment door, a door that closed the avenue of life to 28 shipmates, that door that meant his best friend would drown, a door that shut out swift death for 32 others—was the appalling duty of Electrician's Mate Lloyd B. Mansas as the submarine Squalus sank to the ocean's bottom last Tuesday.

COWBOYS SWAMP OGDEN, 16 TO 6

Twin Falls Trounces Reds With Home-Run Sprees in Final Game

Thursday's Results: Twin Falls 16, Ogden 6. Pocatello 10, Boise 3.

Warplanes Raid China's Capital

CHUNKING, May 25 (AP)—Japanese aircrafts dropped 120 bombs in this provincial Chinese capital's crowded business district tonight, causing about 400 casualties and destroying 20 buildings.

Fishing Outlook Favorable

Barring flood waters that might be expected at the end of the month, streams will be low and clear as the fishing season opens Tuesday, May 30, a survey by the Southern Idaho Fish and Game commission.

Life Saving Ended With Rescue of 33

Diving Bell Returns from Fourth Trip With Word That 26 Men Died On Ill-Fated Craft

PORTSMOUTH, N. H., May 26 (Friday)—Their life-saving mission completed, the navy's high command studied intricate details of salvage operations today after calling a temporary halt to efforts to bring up the sunken submarine Squalus, which was filled with survivors.

HUGE FUND FOR NAVY APPROVED

President Signs Record Peace-time Appropriation

WASHINGTON, May 25 (AP)—A \$770,000,000 naval appropriation bill, the largest in peacetime, received President Roosevelt's signature today.

Dempsey Lashes Fight Film Ban

Former Heavyweight Champion Protests Against, Old Federal Law

WASHINGTON, May 25 (AP)—Jack Dempsey, the old Manassa mauler, unspooled some punches today at a 27-year-old federal law that he said had cost him "a couple of million dollars."

FLASHES of LIFE

By Associated Press. No Go. COLUMBUS, Ind.,—Without Harry Watkins wanted to "float" next Sunday in a car number 12.

Woman Chosen As Leader of Indians

FLASHES of LIFE

By Associated Press. No Go. COLUMBUS, Ind.,—Without Harry Watkins wanted to "float" next Sunday in a car number 12.

Tragedy Shadows Sub's Launching

CRONON, Conn., May 25 (AP)—The submarine Scorpion, the latest of the fleet's new subs, was launched today in a stormy sea.

TWO AGAINST LOVE

An entertaining serial "Stars" in the new "Two Against Love" by the author of "The Love Game" is now being shown at the Pocatello.

ELECTRICAL FAIR TO REMAIN OPEN

Dealers, Contractors Vote to Continue Event Two Days
Twin Falls electrical fair, sponsored by local dealers, electrical contractors...

OSTEOPATHS TO HEAR LECTURES

Members of Idaho Association Assemble in Twin Falls
Idaho's osteopaths attending the 24th annual convention of the Idaho Osteopathic Association...

HERO SACRIFICES PAL FOR OTHERS

Clad in palmans and bathrobe, and wrapped in a blanket, Maness whose home is in Greenwood, N. H., in the Portland Naval hospital...

Canoeists at End Of Pacific Trip

TUWULA, American Samoa, May 19 (AP)—Three canoeists completed their today a 2,500-mile Pacific ocean journey which began last December 31 at Honolulu.

Win Yourself a FREE TRIP TO THE SAN FRANCISCO WORLD'S FAIR

Attend Fair for Details
Make plans now to attend these surprise EXTRA FAIR DAYS!

BREVITIES

Village Friends—Miss Faye Roe has returned from a visit with Mr. and Mrs. A. G. Carter, who are in Portland and New Mexico.
Brother Victor—Joe Schnell, brother of Miss Kay Schnell, is visiting here this week with his sister and with his parents.

COWBOYS SWAMP OGDEN, 16 TO 6

became the first man to climb a tall evergreen tree in the distance of 270 feet from home plate. The home plate cleared the boards...

HELD OVER ELECTRICAL FAIR

The sixth, like the first, was a great lesson for the local An Ogdén error brought the fair to a home run. Schulmeister sent the ball soaring over the center fence...

Win Yourself a FREE TRIP TO THE SAN FRANCISCO WORLD'S FAIR

Attend Fair for Details
Make plans now to attend these surprise EXTRA FAIR DAYS!

OPENING OF CAMP BIDS SCHEDULED

Twin Falls Contractors Submit Figures on \$200,000 Project
Contractors' bids for improvement of Twin Falls migratory labor camp project, involving \$200,000 estimated expenditure...

OPENING FISHING CONDITIONS GOOD

(Continued from Page One)
plains in 1938, 16,650,000 trout and 21,200,000 whitefish.

HELD OVER ELECTRICAL FAIR

The sixth, like the first, was a great lesson for the local An Ogdén error brought the fair to a home run. Schulmeister sent the ball soaring over the center fence...

HELD OVER ELECTRICAL FAIR

The sixth, like the first, was a great lesson for the local An Ogdén error brought the fair to a home run. Schulmeister sent the ball soaring over the center fence...

Win Yourself a FREE TRIP TO THE SAN FRANCISCO WORLD'S FAIR

Attend Fair for Details
Make plans now to attend these surprise EXTRA FAIR DAYS!

Taxpayers Meet With Lawmakers

Members of Twin Falls county's legislative delegation met this evening to discuss the proposed program...

FIFTH DISTRICT LEGION CONVENES

Earl T. Ross, National Vice Commander, Speaks
JEROME, May 25—Speaking on "Americanism," Earl T. Ross, national vice commander of the American Legion from Reno, Nevada...

HELD OVER ELECTRICAL FAIR

The sixth, like the first, was a great lesson for the local An Ogdén error brought the fair to a home run. Schulmeister sent the ball soaring over the center fence...

HELD OVER ELECTRICAL FAIR

The sixth, like the first, was a great lesson for the local An Ogdén error brought the fair to a home run. Schulmeister sent the ball soaring over the center fence...

Win Yourself a FREE TRIP TO THE SAN FRANCISCO WORLD'S FAIR

Attend Fair for Details
Make plans now to attend these surprise EXTRA FAIR DAYS!

TWIN FALLS MAN DIES SUDDENLY

Charles Clarence Noble, Carpenter, Succumbs to Heart Attack
The past week, Charles Clarence Noble, 64, Twin Falls resident since 1905, died of a heart attack in a tent in Rock Creek canyon at 11 a. m. yesterday.

HELD OVER ELECTRICAL FAIR

The sixth, like the first, was a great lesson for the local An Ogdén error brought the fair to a home run. Schulmeister sent the ball soaring over the center fence...

HELD OVER ELECTRICAL FAIR

The sixth, like the first, was a great lesson for the local An Ogdén error brought the fair to a home run. Schulmeister sent the ball soaring over the center fence...

HELD OVER ELECTRICAL FAIR

The sixth, like the first, was a great lesson for the local An Ogdén error brought the fair to a home run. Schulmeister sent the ball soaring over the center fence...

Win Yourself a FREE TRIP TO THE SAN FRANCISCO WORLD'S FAIR

Attend Fair for Details
Make plans now to attend these surprise EXTRA FAIR DAYS!

Rites Set for Rupert Matron

RUPERT, May 25—Mrs. Mary Ann Stewart, wife of Al Stewart, Rupert, retired deputy district attorney, died at 11:35 a. m. today at the family home here.

HELD OVER ELECTRICAL FAIR

The sixth, like the first, was a great lesson for the local An Ogdén error brought the fair to a home run. Schulmeister sent the ball soaring over the center fence...

HELD OVER ELECTRICAL FAIR

The sixth, like the first, was a great lesson for the local An Ogdén error brought the fair to a home run. Schulmeister sent the ball soaring over the center fence...

HELD OVER ELECTRICAL FAIR

The sixth, like the first, was a great lesson for the local An Ogdén error brought the fair to a home run. Schulmeister sent the ball soaring over the center fence...

Win Yourself a FREE TRIP TO THE SAN FRANCISCO WORLD'S FAIR

Attend Fair for Details
Make plans now to attend these surprise EXTRA FAIR DAYS!

Insurance advertisement for A. L. Norton, Hail Insurance, Phone 398

Large advertisement for 'BARGAIN BASEMENT' featuring 'Excess Stock Clearance' and various clothing items like shoes, shirts, and dresses.



Text describing the car sale promotion, mentioning 'USED CAR NOW!' and 'STEP UP TO THE V-8 CLASS'.

Advertisement for 'DAYTON MOTOR CO.' featuring 'THE GOLDEN RULE' slogan and 'YOUR RIG DEALER'.

ITALY RECALLS FORGE IN SPAIN

Conqueror's Welcome Arranged for Returning Fighting Men

ROME, May 25 (AP)—The government announced today that 19,000 Italian soldiers, more than 40,000 admitted officially to have been sent to Spain during the civil war, were to be brought home. The last contingent, including some 10,000 men who joined Franco's victory parade in Madrid, will receive a conqueror's welcome in Naples and Rome.

Officials expected King Vittorio Emanuele to go to Naples to meet them "within the current month." About 100 "Spanish personalities" will accompany the soldiers for a review in Naples. Reports that Franco would be among them were not confirmed.

Officials listed 3,172 Italians killed in Spain. Altogether, Italian casualties totaled 13,077. Sixty-six of the wounded were disabled permanently. There were 306 prisoners who presumably were liberated.

Italy has insisted that her maximum force in Spain was 40,000. It was established that more were sent but additions were accounted for officially as replacements.

It is not clear to an estimate of Italian air help to Generalissimo Franco was in the fiscal year 1937 and the latest official figures showed 174 Italian airmen killed.

Italy sent 30,000,000,000 lire (about \$250,000,000) aiding Franco and said they expected Italy to supply munitions back in raw materials, especially iron.

REVOLVING FUND STATUTE UPHOLD

Idaho Supreme Court Orders Payment of Order in Test Suit

BOISE, May 25 (AP)—The Idaho supreme court in one of three opinions handed down today ruled that the commonwealth's 20-year-old revolving fund statute upheld the \$100,000 in state funds was disbursed in 1937 and 1938 in constitutional.

Justice Raymond L. Gliven wrote the opinion in which three of his four associates concurred. Justice William M. Morgan dissented.

He's Just Curious



FELIX M. McWHIRTER, Indianapolis banker and treasurer of the Indiana Republican Central Committee, told the house un-American investigating committee at Washington, D. C., his only motive for inquiring whether Mrs. Corroll Hull, wife of the Secretary of State, had Jewish blood was to obtain information for himself.

Although New Mexico was one of the last states to be settled, it was one of the first regions in this country occupied by the white man.

HEARING SET ON GAS TAX SHIFT

Idaho Supreme Court to Study \$1,000,000 Transfer

BOISE, May 25 (AP)—The Idaho supreme court at 9 a. m. tomorrow will hear arguments on a suit brought to test the validity of a 1937 legislative act designed to distribute to the 44 counties \$1,000,000 annually in state gasoline tax revenue.

The funds are required by the counties to carry on road work and pay off highway bonds. The law was enacted to reimburse the counties for revenue lost through reduction of automobile licenses from an average of \$1423 to \$1413.

50. momentous is the issue that informed sources freely predict a special legislative session will be required immediately if the law is declared unworkable.

The action was instituted in the name of Ada county against Calvin E. Wright, state auditor, who was advised by Attorney General J. W. Taylor to defer distribution of \$200,000 to the counties under terms of the law calling for that transfer from the state to the counties on April 15, 1939.

The state auditor will be represented in court by Assistant Attorney General Robert Beckwith. For the county there will be Prosecuting Attorney Kenneth O'Leary and E. H. Anderson, Boise lawyer who drafted the law.

The county seeks a writ of mandamus.

FARMFOLK GREET KING AND QUEEN

Britain's Rulers Hailed in Saskatchewan on Visit to Dominion

REGINA, Sask., May 25 (AP)—Overall farmfolk whose toll covered the old northwest territory into Canada's richest granary rubbed elbows with top-titled dignitaries in welcoming King George VI and Queen Elizabeth to this agriculture center.

The smiling avowals look the event in stride despite medical advice to slow down a little in their

ARMY OF METEORIC AND CANADA'S MINISTER OF AGRICULTURE, J. C. GARDNER

The formal welcome was held almost in privacy as the station had been cleared before their arrival. There wasn't a cheer when they stepped from the train, hidden from public view but a tremendous ovation greeted them when they stepped into the open from the station doorway.

The royal procession moved to the Saskatchewan legislative buildings

apparent desire to meet and talk to everybody in western Canada. The interminable showers in one of the rare times they were not appreciated in this wheat-growing country, preceded the arrival of the silver and blue royal train which brought them here from Winnipeg.

The train pulled into the featured depot to the din of blasting whistles and the royal train was fired as the king and queen entered the station. The king and queen were greeted by Lieutenant-Governor and Mrs. Amy of Manitoba and Canada's minister of agriculture, J. C. Gardner.

Except for the greater number of home-driven vehicles on the royal route, the scenes which greeted the king and queen were little different from those witnessed on their visit to other Canadian cities.

Scores of farm families came by

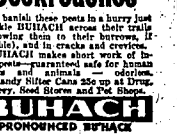
where Premier W. J. Patterson and Mrs. Patterson were hosts at a reception, at which legislators and their wives were formally presented. In reply to the legislators in formal dress of welcome the king handed the premier a written statement expressing his pleasure at being able to visit western Canada.

Except for the greater number of home-driven vehicles on the royal route, the scenes which greeted the king and queen were little different from those witnessed on their visit to other Canadian cities.

Scores of farm families came by

Cockroaches

To battle these pests in a hurry just sprinkle BUAHCHI across their trails following them to their harbors. If possible, use in cracks and crevices. BUAHCHI makes short work of locusts, fleas, and other pests. In Heavy Duty Case 25c at Drug, Grocery, Dry Goods and Pet Stores.



PROMOTED BUTRICK

FEATURING Decoration Day and Vacation PLAY TOGS



Planning a Memorial Day vacation trip—or starting a two-week's vacation? Be sure you shop here first so that you may travel—wherever you go—in style. See these styles at our Sports Shack.

SLACK SUITS

Subject from one of Twin Falls Import assortments—featured are hopsackings, celbrek, ganglank, plaza lona, congo and cottons..... \$1.98 to \$7.95

ISLAND PLAY SUITS

Direct from the Hawaiian Islands. Tropical designs. \$2.98

ALOHA SHIRTS

More of the Hawaiian touch. You wear them in—or out. Bright colors, attractive designs..... Cottons at 95c \$1.98

2-PIECE PLAY SUITS

The 2-piece outdoor costume with the smart effect. Shirt with button-on shorts \$2.25

BLOUSES SLACKS

A choice of blouses for every sport occasion. Tailored and mannish, elastic features..... 98c \$2.95 \$1.98

FARMERETTES

Cotton, in bright effects for outings or garden wear..... \$1.98

Whatever the sports occasion, remember your Mayfair Sports Shack is always your "best bet" for the most becoming costume. Cleverly styled, cleverly displayed you'll go for the Sports Shack showings.

The Mayfair Shop

who are always first in featuring "new things under the sun"

DR. LYON'S TOOTH POWDER 15c

25c SIZE

NORTHERN TOILET TISSUE 2:11c

'LIMIT 4

RINSO GRANULATED SOAP 20c

MINERAL OIL RUSSIAN TYPE 14c

PINT LIMIT 2

Schramm-Johnson Drugs

FRIDAY - SATURDAY SALE

TENNIS RACQUET 1.59

MOISTURE-PROOF STAIN-RESISTANT, extra-firm frame in light, heavy or med. weight.

FRESH-LIVE-PEPPY "GOLDEN CROWN" TENNIS BALLS 33c

12 for 3.90

12-IN. SIZE PLAYGROUND SOFT BALL 29c

MADE TO "TAKE IT"

KEN O'DEA, JR. CATCHER'S MITT 98c

SPECIAL AT ONLY

THE 300 YD. PO-DO GOLF BALL 25c

TOUGH • LONG • TRUE

Johnny Bulla, long-driving professional golfer, averaged 312-yards with 12 Po-Do Golf Balls. The longest record was made in May, 1939. Few golfers can expect to match this record. However, this proves that if you have the ball, long distance is in the 25c Po-Do-Golf Ball. \$2. for 2.90

AGFA B2 CADET CAMERA 1.39

3 1/2" x 4 1/2" PICTURE SIZE

AZUREN FOLIO SUN GOGGLES 98c

Scientific lenses keep out harmful glare rays. Glasse fold compactly into pocket size case. Others 59c, 79c, 89c

OUTING JUG 1.19

KEEPS DRINKS HOT OR COLD

SEAT PADS 79c

KEEPS YOU COOL AND COMFORTABLE

PAPER SUPPLIES 9c PAPER NAPKINS 100 STRAWS PACKAGE OF 100 PAPER PLATES PACKAGE OF 12

ZIPPER BAG 1.59

ROBUST AND WATERPROOF

OVERNITE CASE 1.19

ATTRACTIVE SLIM LINED

ACID INDIGESTION QUICKLY RELIEVED 50c

Try DISMADINE. It is a safe digestive powder that gives almost instant relief from acid indigestion, sour stomach, heartburn, etc. Non-habit forming, pleasant to take. 50c. size bottle..... 50c

BLEWEE WHISK BROOM 17c

DOUBLE SEWED

FLOSS-TEX TOILET TISSUE 3 for 8c

AGFA FILM-D6-116 35c

EASTMAN FILM-V220 30c

AMAZING NEW LIQUID DENTIFRICE TEEL 10c

INTRODUCTORY SIZE BOTTLE

STAR RAZOR BLADES 25c

100 SHAVES

SHU-MILK SOAP 19c

100 SHAVES

SQUIBB'S DENTAL CREAM 33c

100 SHAVES

TANGE LIPSTICK 79c

100 SHAVES

WITCH HAZEL 14c

100 SHAVES

ANACIN TABLETS 17c

100 SHAVES

DEW DEODORANT 36c

100 SHAVES

Lady Esther CREAM 30c

100 SHAVES

SPARKLE SHAMPOO 30c

100 SHAVES

6 Cakes 45c

As fine a soap as money can buy. A better treatment to itself. Lathers freely in hard or soft water. Delightful odor.

Aetna's New Radio HI! A Midgit—But A Marvel!

Performance made possible only by the latest scientific developments. Hear it today! 6.95

GILLETTE 25c

5 SHAVES 1c

WITCH HAZEL 14c

100 SHAVES

First Aid Week

Physicians and Surgeons FIRST AID KIT 79c

Physicians and Surgeons IODINE 18c

Physicians and Surgeons A.B.O. BURN OINTMENT 39c

Fresh Smokes

GARCIA SUBLINE Perfecto CIGARS 5 for 19c

UNION LEADER 5 for 59c

VELVET OF RALEIGH CIGARS 3-10c

An Appropriate Treat

DECORATION DAY SUNDAY 15c

From 11 A. M. to 2 P. M. SOUTHERN FRIED CHICKEN Plate Lunch 25c

Drink ORANGE JUICE For Health 10c

COOLIES WITH SUN ITALIAN BALM 29c

DOUBLE SEWED WHISK BROOM 17c

WITCH HAZEL 14c

100 SHAVES

TWIN FALLS NEWS

Table with subscription rates: Daily edition, 10c per copy; 3 months, \$2.50; 6 months, \$4.50; 1 year, \$8.00.

always very self-conscious about it, even in private life. Stammering is, of course, no sign of a lack of intelligence and mental capacity—some of the most brilliant men in history have stammered.

MEMBER ASSOCIATED PRESS The Associated Press is a non-profit corporation... Member August Bureau of Circulation

BREAD AND SELF-RESPECT Newspaper readers may recall a story told a while back by a sixty-three-year-old in a Pennsylvania town who was on relief but who insisted to his own in the county and the check amounted to \$3.60.

The townspeople began to miss the self-appointed street sweeper. They made inquiries and soon they started to bring money enough was raised to pay for a decent burial in a cemetery. Mario's remains were transferred. There was a funeral, attended by 700 admiring citizens.

WHAT PEOPLE WANT This is, of course, a very sophisticated age. The Age of Innocence is gone. People don't believe there ever was any Golden Age.

CHECKS ON PROPAGANDA City councils, state legislatures, and even the national congress spend much time and energy on laws proposed to curb the activities of anyone thought to be enemies—real or phony—of our government.

HECK TOWN COPS ARE JUST TOO DAMN SMART It was a trouble spot in Wheeling, W. Va., who recognized and ran a machine gun bandit gang sought for five days by various authorities.

LET US AVOID GOING THROUGH THAT AGAIN The Rev. Dr. Herman Frothingham, pastor of the N. Y., has changed his name. "The German is not very popular with people here," explains his pastor.

EASY SPEECH Americans who have heard any of King George's speeches by radio, on his Canadian trip, are likely to admire him for the way he faces his masters' his chief handicap for public life.

Breakfast Food The small group objected to staying at home one evening while Mr. and Mrs. went out. "Come, come," said his father, "if you aren't a better boy you can't go."

A Dog's Life



National Whirligig

WASHINGTON WHIRLIGIG By Ray Tucker HOPKINS' Army aviation expert admitted confidentially and laughingly that Colonel Charles A. Lindbergh's famous report has not been written or printed—except in the headlines.

an absolute ban on shipment of war supplies to Japan is stirring on Capitol Hill. Huggs claims oil to the Orient will be the first step.

chamber of commerce and the National association of manufacturers. But their hearts will belong to Henry if he treats them well.

Labor Secretary's Pleas for Peace Negotiations Rebuffed

NEW YORK WHIRLIGIG By James McNeill The Secretary of Labor Frances Perkins is striving hard behind the scenes to get the I. O. O. F. and the American Federation of Labor to resume their interrupted peace negotiations.

There is a short interest in the wheat market, as against a million shares a year ago. Commodity prices have started to rise after a long slump, partly because of very quiet government buying for relief and other agencies.

CHANGE, HOWEVER, Miss Perkins still has one ace-in-the-hole—Danish wheat. She has already secured a series of realists who head the powerful "sealers' union."

Local beer distributors are insisting that they be given approval of their state administrators in reporting law violations, etc., and each state has its own program.

PARALLEL New York analysis says several striking parallels between market conditions as they are reported by the two agencies.

DEADLINE July 1st is a critical deadline for many Wall Street firms. They must be ready to report unless market conditions—and brokers' fees—have improved.

OUR CHILDREN

A SOCIAL LAW "O, Ma, I'm going in the car with Don's father to see the new color. He was born on their farm yesterday and is going to be a doctor."

Varied Program Given by Moose Variesly ruled at the monthly social meeting of the Twin Falls Moose lodge on Tuesday evening.

Seniors Celebrate

At Burley High BULEY, May 25—Tuesday was senior day for the graduating class of Burley High school.

Program Presented

For Rupert, Jaycees RUPERT, May 25—Members of the Rupert Junior Chamber of Commerce at a dinner meeting Tuesday evening.

NIGHT EDITOR

grade final examinations yesterday. The Peris district county superintendent of schools gave the examinations yesterday morning at the high school.

Billie attended Pleasant View school before the accident. Before taking the examinations yesterday, he rode to Twin Falls by ambulance for X-ray pictures.

What do you want me to do, Joe? I'm asking you to do the eighth grade state civics examination this spring, as the question is, "What do you want me to do?"

Billie attended Pleasant View school before the accident. Before taking the examinations yesterday, he rode to Twin Falls by ambulance for X-ray pictures.

On Vacation Trip—Rev. Albert B. Peterson, pastor of the First Methodist church, accompanied Mrs. Peterson and their two daughters, Mrs. Peterson's mother, Mrs. Peterson's father, and their two sons, on a vacation trip to Chicago.

RED CROSS MAPS DISASTER RELIEF

Preparedness Organization to be Stressed at Classes

Signs that south central Idaho residents would take in the event of a major disaster will be discussed and outlined at a disaster preparedness study to be held by the American National Red Cross in the Park hotel today.

Delegates from Buhl and from the Cassia, Gooding, Jerome, Lincoln and Minidoka county Red Cross chapters have been invited to participate with the Twin Falls chapter.

L. Schiefer, Red Cross manager in the Pacific area, who was formerly national director of disaster relief, will be here to head the faculty of expert instructors. He will be assisted by Mrs. Edith M. Miller, case work supervisor on the disaster staff, and by Forrest Stewart, Idaho field representative.

The meeting will open at 10 a. m. and continue through the luncheon hour. The subject of "Community Relationships in Disaster" will be presented by Mrs. Edith M. Miller. Mrs. D. L. Alexander, vice-chairman, will preside.

The first study will be devoted to Red Cross preparedness. The luncheon session features a presentation of the subject of "Community Relationships in Disaster." Mr. Schiefer will emphasize the part played by federal, state, local, public and private agencies in major disaster situations.

Mrs. McAllister, case work supervisor, who has served in many major disasters in the eastern, southern and Pacific areas, will graphically picture how families are rehabilitated and stricken communities are restored to normal.

Medical societies, hospital groups, nurses, executive bodies of churches, public utility units and representatives of government and commercial circles are invited to attend the institute.

GUARD'S SLAYER TAKEN IN UTAH

Arrest of Ranch Hand Recalls Tennessee Chain Gang Killing

SALT LAKE CITY, May 25 (AP)—A 23-year-old ranch hand, Benjamin F. Floyd, was arrested by agents of the federal bureau of investigation today and held for the brutal slaying of a Manchester, Tenn., jail guard.

Floyd, indicted by the state court in Manchester August 1, 1935, for murder and named in a federal complaint filed in Nashville in 1936 charging unlawful flight to avoid prosecution, was caught at Randolph, Utah, where he had been working as a ranch hand for two years under the name of Ben Burton, Newman said.

Floyd served the month's road gang sentence and that on the late May 1936 he was given him permission to enter his (Floyd's) home to change clothes. While in the home, Newman said, Floyd took a .45 caliber pistol and killed the guard.

Floyd was held in the Salt Lake county jail awaiting removal to Tennessee.

Engineers Board Members Named

BOISE, May 25 (AP)—Five members of the board, created by the 1937 legislature to supervise licensing of persons engaging in engineering in Idaho were named today by Governor C. A. Bottolfsen.

The chief executive was required by the law to make his selections from seven recommendations made by the Idaho Society of Engineers, which submitted seven names.

He observed after making them that two state and one federal employes might be better to retire from present governmental employment or decline to accept employment on the board because of their position, but he decided to accept such employes from among those who have the compensation of only \$10 per day and is not constant.

These were the appointees: William F. Hughes of Lewiston, president of the Idaho Society of Civil Engineers; Raymond J. Briggs of Boise, secretary of the society; D. J. Nevell of Boise, United States reclamation engineer; H. R. Flint, acting commissioner of public works; and Jesse E. Buchanan of Moscow, dean of the University of Idaho college of engineering.

Smiles: Kin Escapes Sub Death



THERE WAS JOYFUL—and sadness, too—in the home of William Isaacs at Washington, D. C., when word was received he was among the first seven men to be rescued from the sunken submarine Squalus. A brother, Howard (left), is shown with the rescued man's parents, Mr. and Mrs. Richard Isaacs. The mother is clasping William's picture. A few moments later Mrs. Isaacs collapsed from the 24-hour strain.

MASS PRODUCTION CUTS PRICE OF AUTOMOBILES

If a low-priced automobile were built the way the average house is assembled, it probably would cost the buyer a good, round \$15,000.

The purchaser undoubtedly would stock bits of the local car builders. The successful bidder would order an engine from the motor manufacturer, headlights and wiring from the electrical supply house; gears, axles, springs and shock absorbers from manufacturers and wholesalers.

Acquiring a supply of sheet steel and framing members, he would hire mechanics by the day to construct the body; when they were done painters would be called in; a sub-contractor would handle the upholstery; the local glass warehouse would supply the right panes of glass, if in stock. Otherwise it would send to the factory, possibly holding up the job a few days.

Then the tires, hardware and final details.

Mass production, with its concentration of capital, managerial talent and all the resources of big-scale industry, delivers the job for \$700 or so, tested and guaranteed to perform.

The factory workers who turn out

IRON-LUNG TRIP AT DESTINATION

Infantile Paralysis Sufferer Arrives at Grotto of Miracles

LOURDES, France, May 25 (AP)—Fred B. Sutte, Jr., 23-year-old sufferer from infantile paralysis, arrived today in his iron lung at the "Grotto of Miracles," the end of a 3,000-mile pilgrimage from the United States.

The Chicagoan's father said the trip was a "thanks offering" for his son's three years of life in a mechanical respirator as much as a "prayer for another miracle." Young Sutte was afflicted three years ago while in China.

The indomitable "mirac" in the iron lung, usually smiling and joking, grew serious as he approached the goal of his long pilgrimage. As he entered the grotto made famous by Bernadette Soubiroux, French peasant girl who became a saint, his face was set and anxious.

The entrance of his streamlined trailer in which he crossed from Le Havre disrupted the conclusion of the open air mass celebrated each afternoon.

Hundreds of pilgrims from all parts of the world crowded around the respirator, clamoring greeting in many languages.

Sutte glimpsed the roof on one entrance to the grotto near the Pont river as his caravan pulled slowly up before the itinerary. He was given a corner room nearest to the ramp, into which his "iron lung" was hoisted gently up a sloping ramp. His father, mother and sister engaged rooms near his.

There he probably will be wheeled in the respirator to the "Fountain of Miracles," which Saint Bernadette is said to have started by scraping the grotto floor with her hands after she had been instructed by an apparition of the Virgin Mary.

Fighter Sued for Collision Damages

REDWOOD CITY, Calif., May 25 (AP)—Ace Hudkins, former prize fighter once known as the "Nebraska Wildcat," was sued today for \$246-40 damages for an automobile crash May 18.

The suits by six Redwood City residents, also named Hudkins' wife, Mrs. Mildred Hudkins, and his brothers, Ab and Art Hudkins.

The complaints charged Ace Hudkins was negligent when two automobiles crashed head-on, Hudkins was still in a hospital with an injured leg.

Death Takes Aged Woman at Heyburn

BURLEY, May 25.—Mrs. Mary Gordon Jensen, 87, died at 3:30 a. m. yesterday morning at the home of her son, C. P. Jensen, at Heyburn, of influenza incident to old age.

Born March 18, 1852, in Denmark, she was the daughter of Mr. and Mrs. Louis Peter Sorenson. She had

been a long time resident of Burley where a son, Lorenzo Jensen, resides. Besides the two sons residing at Burley and Heyburn, another son, Alvin Jensen, and a daughter, Mrs. Della Burgess, both of Los Angeles, survive.

The body rests at the Payne mortuary here. Funeral services are tentatively set for Monday at 11 p. m. In 13 states, jury service is compulsory for women as well as men.

Complete CLOSE OUT!
OF OUR ENTIRE SHOE STOCK!
No Refund! — No Exchanges! — All Sales Final!

ORIGINAL VALUES TO \$4.95
Whites, Black Patents, Greys
In Pumps and Straps,
Broken Sizes in This Lot! **\$1.47**

Paris Fashion and Pet-Of-Paris SHOES
Values to \$1.95
All new spring dress and sport styles in Japanes, Patent and other popular shades. All good styles **\$2.47**

—Johansen and Tweedie SHOES
Values to \$7.50
Quality spring shoes in these well known brands, going at only **\$3.97**

WALK-OVERS
Values to \$8.50
Our quality shoe drastically cut for this close-out. Your last chance to get this famous brand, and at a real cut price! **\$4.97**

HADLEY'S

RORABECK'S SAV-MOR DRUG STORES

TOBACCOS

CAMEL CIGARETTES
CAMEL CIGARETTES
Lucky Strike Old Gold
Camel 30's 30c
Camel 10's 10c

POLAR CIGARETTES
POLAR CIGARETTES
2 Pkts 23c
Carton \$1.15

SPECIAL SATURDAY ONLY
TOP, that new cigarette tobacco
6 for 1 FREE with each purchase of 6 **25c**

BILTMORE MIXTURE
An old English mixture that has pleased generations of pipe smokers.
3 for 25c — ROLL **50c**
2 and THAY and LIGHTER COMBINATION **35c**

CAMERA AND FILMS AT REDUCED PRICES
Let us finish your films — 8 prints and one 35" only **35c**

POCKET KNIVES Reg. 43c. Res. 30c. **39c**. Res. 35c. **32c**
CORN COB PIPES 5c and PINOCLE PLAYING CARDS **23c**

A LARGE ASSORTMENT OF FRANK MEDICO and YELLOW-BOLE PIPES TO CHOOSE FROM!

UNBREAKABLE WOOD FOR MICHOLE ADE, cooling, and 10c
HERSHEY'S CHOCOLATE SYR. 49c. **49c** freshling **3 for 25c**
HERSHEY'S CHOCOLATE SYR. 49c. **49c** freshling **4 for 35c**
KINGS COOK. 2c. **2 for 35c**. **3c**. **3 for 39c**
CANADA DRY. 2c. **2 for 45c**

FRIDAY & SATURDAY SPECIALS

ALARM CLOCKS **87c**

WAFFLE IRON
With Heat Indicator, Regular \$4.99, Extra Special **\$2.49**

We Fill TRUSSESS
Come in and tell us your afflictions and we have an appliance to fit any case — and price to fit any pocketbook. We also have a fitter for this department.

For Your PICNIC NEEDS
PAPER PICNIC PLATES, 2c. 24c. 10 carton **9c**
PAPER NAPKINS, 8c. 10 pkts. **9c**
SERVE MORE LUNCHEON SETS, service for 6 **9c**
DIXIE CUPS, 2c. 50 **9c**
WAX PAPER, 100 foot rolls **9c**

Memorial FLOWERS
For Decoration Day. **SPRAY** from **13c** to **89c**
WEATHERS from **29c** to **54.39**

50c BOX STATIONERY and a FOUNTAIN PEN both for 59c

BALANCED VITAMIN PROTECTION
Wheatamin TABLETS
PROVIDES A FULL DAILY DOSE OF VITAMINS A, B, D, C, G and E.

ROLLER SKATES
Ball bearing, extra special **89c**

Electric GURLLING IRON
Extra Special **29c**

FRIDAY and SATURDAY SOAP SPECIAL
LUX and LIFE BUOY TOILET SOAP **3 for 17c**

Reg. 25c
OXYDOL 21c

P. & G. GIANT 5 Bars 17c

DASH 5 Bars 46c

INSECTICIDE
Cyno-Gas, 1 lb. **69c**
1/2 lb. **49c** — 1/4 lb. **29c**
Aroclene Lead, 1 lb. **35c**
1/2 lb. **19c**
Fazla Green, 1 lb. **53c**
1/2 lb. **17c**
Black Leaf 40, 1 oz. **33c**
1 lb. **22.19**
Evergreen Spray, 2 oz. **33c**

FOR THAT MORNING AFTER feeling
Head feels like a balloon... mouth tastes like you swallowed a flower... don't want to get up... don't want to go to work... don't want breakfast... only dry throat blue... CHEER UP, take... **NURSOLA**
... fresh like a balloon... mouth tastes like you swallowed a flower... don't want to get up... don't want to go to work... don't want breakfast... only dry throat blue... Get a bottle today. **50c**

Hitting the Mark

HOWARD HILL, World Champion Field Archer, can flick the ash off your Chesterfield with a single shot.

And Chesterfield's right combination of the world's best cigarette tobaccos hits the mark every time for what smokers want in a cigarette...

- They're milder... refreshingly milder
- They taste better... you'll enjoy every one
- They Satisfy... the blend can't be copied

When you try them you will know why Chesterfields give millions of men and women more smoking pleasure... why THEY SATISFY

Chesterfield
...the RIGHT COMBINATION of the world's best cigarette tobaccos... they're MILDER and TASTE BETTER

Copyright 1939, LOECAT & BATES TOBACCO CO.

SOCIETY and CLUBS

Twin Falls County Delegates Figure at District Meeting

Twin Falls County delegates figured prominently at the thirty-ninth annual convention of the First District Federation of Women's clubs in St. Anthony, Monday, Tuesday and Wednesday of this week.

3-City Music Recital Told

A musical recital will be presented Sunday evening, May 28, at the club. Fellow will be the Twin Falls Junior Musicians of America, assisted by the Junon Musicians from Buhl and Jerome, under the direction of their music master, Roy K. Stahfeld.

The program as announced yesterday by Mr. Stahfeld is as follows: "Our Prudent March," A. Montgomerie, and "The Enchanted Forest," K. Slika, arcaicaria. "The Swing Waltz," K. Slika, by purp... "At Sundown," A. Montgomerie, orchestra; "Valse Primo," K. Slika, orchestra. "Berenade," Toselli, violin solo. "Billy Malon," K. Slika, and "Junior Musicians March," K. Slika, orchestra. "Harold Conner will be the accompanist.

Dinner Party For June Bride

Another in a series of social events honoring Miss Irene Parrott, the fiancée of Paul Fuller of Eggogue River, Oregon, was the smartly appointed dinner party at which Mrs. and Mr. E. B. Johnson presided.

Quality charming centerpiece of beaded daisies, beaded buttons and garden pills, arranged in an old-fashioned bouquet, and flanked on either side by hurricane lamps decorated the linen-covered dinner table.

DELEGATES REPORT AT COUNCIL MEETING

Reports of delegates who attended the annual convention of the First district of delegates were reported at St. Anthony this week were of chief importance at the meeting of Good Will club members yesterday afternoon at the home of Mrs. Henry Powell.

MOVITA & John CARROLL

Robln Hood, Bandit, Scenarist, Fighting A Thrill, Romance & Songs

MOVITA & John CARROLL... THE RETURN OF THE CISCO KID... WARNER BAXTER... MOVIE ADVERTISING

Movie Stars Pet

The musical ability of Miss Eunice Ewer was thoroughly tested Wednesday evening when she was the guest of honor at a miscellaneous shower arranged by Mrs. C. M. Simpson...

War Mothers Fete Member

Honoring Mrs. Georgia Clark, a prominent member of the Falk chapter of American War Mothers, members of the chapter arranged a delightful party for her yesterday afternoon at the American Legion auxiliary room.

Poor Taste Party Popular

"Poor taste" provided the theme for a delightfully informal luncheon Tuesday afternoon at the home of Mrs. Noel Bailey for members of the club.

AFTERNOON GUILD HEARS OF EARLY CHURCH

Members of the Attention Guild of the Ascension Episcopal church formed an interested audience for talks on the early days and work of the Episcopal church in Idaho at their meeting yesterday afternoon at the home of Mrs. A. L. Norton.

PROMINENT WOMEN ARE TOPIC OF MEETING

At the meeting of the M. S. and S. club Wednesday afternoon at the home of Mrs. Les Morris, women prominent in American life were discussed by four speakers. In attendance at the meeting were thirty-five members and guests.

MRS. MERRILL HONOR GUEST AT PARTY

Mrs. Nellie Merrill was the guest of honor at an informal four-course luncheon one afternoon this week at the home of Mrs. W. O. Smith.

WARNER BAXTER

WARNER BAXTER... THE RETURN OF THE CISCO KID... MOVIE ADVERTISING

Red Knights at Annual Banquet, Swimmer, Dance

Beginning with a 6:30 banquet last evening, a swimmer this afternoon and participation in this evening in the Red Knights arranged on the laws at the home of Fred Meach...

COMPROMISE HITS AT PROFITS TAX

WASHINGTON, May 25 (AP)—The much-demonstrated undistributed profits tax appeared doomed today as word was passed that compromise plan for revising the revenue law to encourage business recovery had been approved by President Roosevelt, the treasury and congressional leaders.

SENIOR SIGMA DELTA PSI MEMBERS FEETE AT HILARIOUS PICNIC

One hundred and twenty-five pupils of St. Edward's school were the guests at a hilarious picnic yesterday afternoon at Harlow park. Ice cream cones were served.

CATHOLIC PUPILS FEETE AT HILARIOUS PICNIC

One hundred and twenty-five pupils of St. Edward's school were the guests at a hilarious picnic yesterday afternoon at Harlow park. Ice cream cones were served.

...For those who want the best!

OLD HEIDELBERG BEER... No wonder Blatz Old Heidelberg Special Pilsener Beer is winning friends everywhere...

IDAHO TODAY & SATURDAY

Help! Today's Won the Sweepstakes And You Win a Million Dollars... SANDER MOLEY... CHARLIE RUGGLES... FREE! FREE! 50 CANDY BAR... MOVIE ADVERTISING

WARNER BAXTER

WARNER BAXTER... THE RETURN OF THE CISCO KID... MOVIE ADVERTISING

Weather

IDAHO: Partly cloudy Friday and Saturday with scattered showers over mountains; little change in temperature.

Coming Events

MEMORIAL SERVICE. United Spanish War Veterans and Auxiliary will meet at the Christian church at 10:45 a. m. Sunday to attend special memorial services.

DANCE! SATURDAY NIGHT MIDWAY PAVILION

BUENOS AIRES (AP)—Twenty years behind metropolitan centers of the United States, Buenos Aires is having a bicycle problem. General Be...

CLOSE-OUT

One Complete Table of Beautiful Heisey Glassware and Oven Serve Ware... Values up to \$15.00 a Doz. now... DIAMOND HDWE. CO.

OLD HEIDELBERG BEER... No wonder Blatz Old Heidelberg Special Pilsener Beer is winning friends everywhere...

WARNER BAXTER... THE RETURN OF THE CISCO KID... MOVIE ADVERTISING

OLD HEIDELBERG BEER... No wonder Blatz Old Heidelberg Special Pilsener Beer is winning friends everywhere...

LEWISTON OPENS NEW RIVER SPAN

Twin Cities Celebrate at Dedication of Interstate Bridge

LEWISTON, Idaho, May 25.—Opening of the new Interstate bridge, the first of its kind in the twin cities for many years, will be celebrated with a parade and a banquet.

AUTO PRECISION STANDARDS HIGH

One Man Out of Every Nine in Factories Checks Accuracy

A modern Paul Bunyan was fitting pistons in a car 60 miles long, observing the standards of accuracy which prevail in modern car factories, his mile-wide cylinders and a quarter in diameter.

For in motor assembly, tolerances of .000001 inch are watched in fitting pistons today. After being manufactured to such accuracy, 27,000 pistons are checked, the pistons are then gauged into a number of different size groups.

One man out of every nine in the main plant is an inspector, busy checking the standards of accuracy. In axle plants, where important gears are assembled, there is one inspector for every 100 men.

Subjected to the most painstaking skill in manufacturing, motor parts are carefully matched for weight and size, before being installed, so that similar units are near alike in every respect as identical twins of peas-in-a-pod.

Segregated according to weight and piston hole size, the connecting rods are sorted in size to correspond to a similar set of perfect.

This precision assures perfect balance, longer life, and a smoother-running engine.

Similar matchings are carried out with gears to select corresponding sets, and with ball bearings, with wheels, and other parts.

The almost unbelievable accuracy with which automobile engines are worked contrasts strongly with the manufacturing standards prevailing when James Watt was making his first steam engine.

Yet, after making the present cylinder two feet in diameter, the inventor got a letter back, saying that he had practically achieved "absolute accuracy" because "the diameter of this cylinder doesn't vary more than the thickness of an orange."

HAGERMAN

Clive Cline—Clive club meeting Thursday afternoon with 25 members present was the final meeting of the club for this season.

In Halley—Mrs. Maxine Ebberts left Friday for Hallett where she is visiting at the home of her sister, Mrs. Tony Thompson.

Waller—Mr. and Mrs. John Grogan of Twin Falls spent the week-end visiting at the home of Mr. and Mrs. Jack Woodhead at the Lewis Salmon power plant.

Atford Funeral—Silas Condit conducted funeral services for John Ward in Clewun Ferry Wednesday, May 24, at 10 o'clock.

At Boat Rally—Trop 74 of Hagerman attended the Gooding Boat Rally at Gooding Saturday evening.

At Farm—Mr. and Mrs. O. P. Reynolds and daughter, Alvina,

Truck Plays Major Role In Farm Life

Many Carriers Haul Agricultural Products

Just about a fourth of the trucks plugging the interstate highway system, located in the farm belt, haul agricultural products and agricultural commodities.

This exceptional proportion has its roots in the basic economic position of agriculture.

"A modern mechanization which regulates them, to meet unfavorable economic conditions by bringing production costs down to a minimum in line with their returns."

Along with the new farm-to-industry relationship, the past few years have seen a virtual revolution in farm-to-consumer distribution.

The relatively small load carried by each truck and the vehicle's ability to go anywhere has greatly increased the distribution of products to small cities and towns.

Long direct from the farm to retail outlets from city markets where long-distance shipments are brought in and redistributed by truck.

Along with the new farm-to-industry relationship, the past few years have seen a virtual revolution in farm-to-consumer distribution.

Percentage of Women Motorists to Increase

Connecticut authorities to be women. While middle-aged women are not considered as likely to undertake to learn driving as men.

The survey shows that there are more men licensed at 22 years of age than at any other single age group.

Men operators 22 and 26 years of age out-number those of any other age, while the two peak ages for the female operators are 27 and 28.

But youth has no monopoly on driving licenses. An average of about 14,000 operators under 19 years of age, it is estimated that the first 100 kind completed by operators are 65 years of age or over.

Connecticut listed 316 men and 221 women between the ages of 71 and 90 holding licenses to drive automobiles.

That the increasing proportion of women drivers is a comparatively recent trend is shown by the fact that in the five years ending with 1935 the proportion of men and women holding operators' licenses remained practically constant.

Operators increased nearly 18 per cent in the five years while female operators increased 13 per cent.

By carrying over certain parts from year to year, leaving them of a standard size, the automobile manufacturer is seeing to it that a motorist doesn't have to search high and low to get certain equipment to replace the old.

Over a period of years one company has eliminated 20,000 parts and accessories still protected by old customers.

At first Saturday on a three weeks' trip through a number of the southern states, Nick Haight, the showman attending the drub store during Mr. McCreynolds absence.

At Farm—Mr. and Mrs. O. P. Reynolds and daughter, Alvina,

At Farm—Mr. and Mrs. O. P. Reynolds and daughter, Alvina,

At Farm—Mr. and Mrs. O. P. Reynolds and daughter, Alvina,

REPLACEMENT OF CARS STILL LAGS

Saturation Point in Auto Ownership Remains Far Distant

Examination of purchasing habits of the automobile driving public, coupled with evidence on the steadily increasing use being given motor vehicles, indicates that the saturation point in automobile ownership still is far distant.

By the end of 1937, the year during which production and sale of automobiles came nearest to pre-depression levels, the 20,500,000 automobiles and trucks then in use were older on the average and were being driven longer and harder than the cars in use at any time of comparable propriety since the World War.

The rate at which the public purchased new vehicles in both 1936 and 1937, also related to the number, age and rate of use of vehicles in operation at the beginning of

each year, was still below pre-depression standards.

Production in 1937 to the end of 1937, a total of 15,400,000 new vehicles were sold in the United States, of which 12,000,000 offset retirement of old machines and only 3,400,000 net to increase the number of vehicles in use.

Moreover, during the 1932-1937 period, only 10 per cent of the motor vehicles in use at the end of each year had been purchased new during the preceding 12 months.

The attainment in 1937 of pre-depression levels both in scrapping of old cars and addition of new cars had not, however, offset the accumulated deterioration of the public's "automobile inventory."

The result was that at the end of 1937, the public had a higher percentage of cars seven years old, or older, than in any year prior to 1930.

Accordingly, it is reported to aid in restoring living conditions, the public who still have some life in their auditory nerve.

'Permanent Wave' Machine Puts Curl in Car Springs

A complete automobile, finished and ready to run, has a wobble and a goose-neck. It also has a snow-shoe, a dog collar, a hairpin and a tin hat.

You won't find these terms in the books but, out in the shop, wobble with a knock for the doerivative and a fine disregard for technical words and the authority of the dictionary.

The big machines that perform extraordinary operations with accuracy and speed, pop up with such names as Big Bertha, Flyer Pisto, Perculator, Hay Bailer, Jack Rabbit and Corn Popper.

A cent is put in steel ribs by the Permanent Wave machine. Coil springs are squeezed into place by a Robol. The Merry-Go-Rounding splindles rise, old, matching

motor blocks that roll round. Its face, only the lute is missing.

Lamp guards are known as Fish, while down around the shock absorbers a set of Horshoes is found. There's a Bottle Cap on the engine water jacket, and elsewhere a Pan-cake, a Spider, a Snowshoe and a Banjo.

There's humor as well as accurate description in motor factory slang. Little Perry is the apprentice name given a three-foot pipe wrench while a device that puts pressure on drills to make them bore on through cars is called the authoritative title of Old Man. Higher mathematics are put in place by terming the old-fashioned Quack Slick.

Many terms mean different things in different plants since processes are not standardized. Some designations may be far from permanent.

Many terms mean different things in different plants since processes are not standardized. Some designations may be far from permanent.

Many terms mean different things in different plants since processes are not standardized. Some designations may be far from permanent.

Many terms mean different things in different plants since processes are not standardized. Some designations may be far from permanent.

Many terms mean different things in different plants since processes are not standardized. Some designations may be far from permanent.

Many terms mean different things in different plants since processes are not standardized. Some designations may be far from permanent.

Many terms mean different things in different plants since processes are not standardized. Some designations may be far from permanent.

Many terms mean different things in different plants since processes are not standardized. Some designations may be far from permanent.

Many terms mean different things in different plants since processes are not standardized. Some designations may be far from permanent.

Many terms mean different things in different plants since processes are not standardized. Some designations may be far from permanent.

Many terms mean different things in different plants since processes are not standardized. Some designations may be far from permanent.

Many terms mean different things in different plants since processes are not standardized. Some designations may be far from permanent.

Many terms mean different things in different plants since processes are not standardized. Some designations may be far from permanent.

Many terms mean different things in different plants since processes are not standardized. Some designations may be far from permanent.

Many terms mean different things in different plants since processes are not standardized. Some designations may be far from permanent.

Many terms mean different things in different plants since processes are not standardized. Some designations may be far from permanent.

Tribute At Rites For Naff Matron

BURLLEY, May 25.—Final tribute was paid the memory of Mrs. Mabel Jones of Naff at the M. E. D. S. church last Thursday at 1 p. m. when funeral services were conducted by Bishop John G. Smith of White.

A mixed quartet from Malta sang "Adele With Me" and prayer was by Lett Uyt of Malta. Mrs. Florence Uyt sang a solo and the first speaker was Joseph P. Payne. The 2nd praise was read by Mrs. Olson Sanders. Mr. and Mrs. Joseph P. Payne sang "My Father Knows" and Bishop Olson Sanders was the concluding speaker. The Malta quartet sang "My Father Knows" and the benediction was by Melvin Horn. Interment in the Naff cemetery with Bishop John G. Smith offering the dedicatory prayer.

For instance hardly a plant today but has a Charlie McCarthy, which turns out to be the first device showing some quality of the famous little dummy.

Do you value your appearance? Send in your shirte, enjoy the feeling of confidence a perfectly laundered shirte gives you. Partisan, Inc. Phone 856. Adv.

Do you value your appearance? Send in your shirte, enjoy the feeling of confidence a perfectly laundered shirte gives you. Partisan, Inc. Phone 856. Adv.

Do you value your appearance? Send in your shirte, enjoy the feeling of confidence a perfectly laundered shirte gives you. Partisan, Inc. Phone 856. Adv.

Do you value your appearance? Send in your shirte, enjoy the feeling of confidence a perfectly laundered shirte gives you. Partisan, Inc. Phone 856. Adv.

Do you value your appearance? Send in your shirte, enjoy the feeling of confidence a perfectly laundered shirte gives you. Partisan, Inc. Phone 856. Adv.

Do you value your appearance? Send in your shirte, enjoy the feeling of confidence a perfectly laundered shirte gives you. Partisan, Inc. Phone 856. Adv.

Do you value your appearance? Send in your shirte, enjoy the feeling of confidence a perfectly laundered shirte gives you. Partisan, Inc. Phone 856. Adv.

Do you value your appearance? Send in your shirte, enjoy the feeling of confidence a perfectly laundered shirte gives you. Partisan, Inc. Phone 856. Adv.

Do you value your appearance? Send in your shirte, enjoy the feeling of confidence a perfectly laundered shirte gives you. Partisan, Inc. Phone 856. Adv.

Do you value your appearance? Send in your shirte, enjoy the feeling of confidence a perfectly laundered shirte gives you. Partisan, Inc. Phone 856. Adv.

Do you value your appearance? Send in your shirte, enjoy the feeling of confidence a perfectly laundered shirte gives you. Partisan, Inc. Phone 856. Adv.

Do you value your appearance? Send in your shirte, enjoy the feeling of confidence a perfectly laundered shirte gives you. Partisan, Inc. Phone 856. Adv.

Do you value your appearance? Send in your shirte, enjoy the feeling of confidence a perfectly laundered shirte gives you. Partisan, Inc. Phone 856. Adv.

Do you value your appearance? Send in your shirte, enjoy the feeling of confidence a perfectly laundered shirte gives you. Partisan, Inc. Phone 856. Adv.

Do you value your appearance? Send in your shirte, enjoy the feeling of confidence a perfectly laundered shirte gives you. Partisan, Inc. Phone 856. Adv.

Do you value your appearance? Send in your shirte, enjoy the feeling of confidence a perfectly laundered shirte gives you. Partisan, Inc. Phone 856. Adv.

Do you value your appearance? Send in your shirte, enjoy the feeling of confidence a perfectly laundered shirte gives you. Partisan, Inc. Phone 856. Adv.

Do you value your appearance? Send in your shirte, enjoy the feeling of confidence a perfectly laundered shirte gives you. Partisan, Inc. Phone 856. Adv.

Do you value your appearance? Send in your shirte, enjoy the feeling of confidence a perfectly laundered shirte gives you. Partisan, Inc. Phone 856. Adv.

Do you value your appearance? Send in your shirte, enjoy the feeling of confidence a perfectly laundered shirte gives you. Partisan, Inc. Phone 856. Adv.



FOR GOOD LIVING, HAVE ON HAND PLENTY OF THIS LIGHT, MAN-STYLE PILSNER

"PUT A CASE IN MY CAR, TOO!"

Planning a family outing - or having friends drop in? Stop today at your neighborhood grocery, SAFEWAY. Special prices on Brown Derby by the case... 24 bottles or 24 cans. The good word is, "Put a case in my car, too!"

Drink thirstily or sip slowly - Brown Derby Pilsner Beer will always satisfy you. For this beer, like imported Pilsner, gets its goodness the natural, old-country way... from ripe grains, latest harvest hops, pure water and careful, unhurried brewing. Even its sparkle is natural carbonation. We do not believe you can buy a finer beer at any price.

Experts say Brown Derby equals imported Pilsner

NEED: Look at Brown Derby's creamy, long-lasting head. Sniff its teasing fragrance. These are true Pilsner signs.

ROOT: Like imported, too, is Brown Derby's bright amber color... and all those pinpoint bubbles that sparkle up while you drink.

FLAVOR: Neither strong, bitter nor sweet. Brown Derby has a light, mellow beer taste - with hope and maltness balanced just-right. The true, tempting Pilsner flavor!

AT YOUR NEIGHBORHOOD GROCERY, SAFEWAY

OLD HOME WEEK MURDER

by Phoebe Atwood Taylor

Chapter 40
On "Billingsgate to Tier"
"Elodie warned out Weston's plans to take his money out of the bank..."

Acquia's Graduates Hear Wendell Pastor

RUPPER, May 25—The Rev. Carl M. Davidson of Wendell brought an inspirational address to the convocation of Acquia high school..."

War in China Raises Prices In Famed Underwear Street

SHANGHAI, May 25—"Underwear Street" is a famous spot known the world over for its wicker shoppers..."

Play Day for Grade Students

Beginning at 9:30 Tuesday morning, the entire student body of Washington school is taking a play-day..."

Boys' Gang Split By Court's Order

A gang of five local boys, four of them 13 and the other 14 years of age, were split up by a court order..."

HOLLISTER

In New Field—Word has been received that Mr. and Mrs. John Park...

Jerome B. P. W. At State Convention

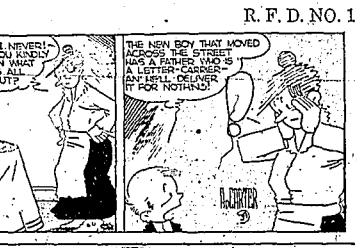
JEROME, May 25—Among the members of the Jerome Business and Professional club who attended the P. W. convention...

Home Makers

Home Makers club met Wednesday afternoon at the home of Mrs. George Carter with sixteen members...

Daily Cross-Word Puzzle

ACROSS, DOWN, SOLUTION of Yesterday's Puzzle, and a grid for the crossword puzzle.



ARMSTRONG TROUNCES BRITISH TITLEHOLDER

Cardinals Keep Jump Ahead of Rampant Reds in National League Race

World Champion Pounds Roderick All Around Ring

Englishman Survives California Negro's Furious Attack

By DREW MIDDLETON LONDON, May 25 (AP)—Hammering Henry Armstrong blasted the British welterweight champion, Ernie Roderick, into helpless and bloody submission in a fifth round at Harringay arena tonight.

Nine Qualify for Best Ball Event

News-Times Golf Field increases to 30 as Tests Continue

With three days remaining for qualifying play in the News-Times golf tournament a total of 30 title-seekers already have entered the sixth annual trophy event at Twin Falls Country club.

U.S.C. Trackmen Dominate Meet

Trojans Odds-on Favorites to Win Intercollegiate 4-A Championship

Americans Trim British Golfers

Dick Chapman and Bill Holt Reach Quarter-Finals of Amateur Tourney

By SCOTTY RESTON HOVLAKES, En May 25 (AP)—Dick Chapman, a slashing Connecticut Yankee, and Bill Holt, a broad-beamed fullback from Syracuse, squeaked into the quarter-finals of the British amateur golf championship today while English golf articles were writing them out of the tournament.

England, France Divide Matches

LONDON, May 25 (AP)—England and France today divided the first two stages of the first two stages of the European zone at Wimbledon today.

PITCHES ONE-HIT BALL AGAINST RED SOX



Feller Scores 7th Triumph of Season With 1-Hit Hurling

Ken Keltner Clouts Three Home Runs for Cleveland

AMERICAN LEAGUE New York 5, Detroit 2 Cleveland 11, Boston 8 Washington 4, St. Louis 1 (Only three games scheduled).

Table titled 'STANDINGS TODAY' showing American League and National League standings. Columns include team names and win-loss records.

Rex Mays Leads Speed Qualifiers

Field of Certain Starters for 500-Mile Race Increased to 21

Yankess 5, Tigers 2

Yankess 5, Tigers 2

Advertisement for 'BIG SIX' featuring a list of names and statistics, possibly related to a sports event or competition.

St. Louis Series Features Close Battle for Lead

Redbirds Trim Bees And Cincinnati Defeats Giants

NATIONAL LEAGUE Cincinnati 8, New York 1 St. Louis 7, Boston 1 Brooklyn 8, Pittsburgh 7 Philadelphia 8, Chicago 7

ST. LOUIS, May 25 (AP)—The league-leading St. Louis Cardinals, behind the effective hurling of Bob Weiland and Bob Bowman, won their seventh straight game today, defeating the Boston Bees, 7 to 1.

Reds 6, Giants 1

CINCINNATI, May 25 (AP)—The rampant Cincinnati Reds ran their string of victories to ten today with a 6 to 1 conquest of the New York Giants on the three-hit pitching of Floyd Whitley, Moore and Gene Thompson.

Table showing National League scores for various games, including Cincinnati vs New York, St. Louis vs Boston, etc.

Baer And Nova Take Day Off

Max Expresses Confidence in Ability to Beat Young Opponent

Junior Baseball Candidates Meet

Max Baer, coach of the Twin Falls American Legion junior baseball squad, will address a meeting of candidates for the squad at Legion hall at 6:30 p. m. today.

Be Sure To See This

Advertisement for 'NEW Ker-O-Kil Weed Burner' with a list of features and contact information for TWIN FALLS.

Redbirds Trim Bees And Cincinnati Defeats Giants

NATIONAL LEAGUE Cincinnati 8, New York 1 St. Louis 7, Boston 1 Brooklyn 8, Pittsburgh 7 Philadelphia 8, Chicago 7

ST. LOUIS, May 25 (AP)—The league-leading St. Louis Cardinals, behind the effective hurling of Bob Weiland and Bob Bowman, won their seventh straight game today, defeating the Boston Bees, 7 to 1.

Reds 6, Giants 1

CINCINNATI, May 25 (AP)—The rampant Cincinnati Reds ran their string of victories to ten today with a 6 to 1 conquest of the New York Giants on the three-hit pitching of Floyd Whitley, Moore and Gene Thompson.

Table showing National League scores for various games, including Cincinnati vs New York, St. Louis vs Boston, etc.

Ward Takes Golf Title in Playoff

SPOKANE, May 25 (AP)—With a blistering six over par round of 66, Marvin (Bud) Ward of Spokane, 1938 Walker cup team member, won the northwest open golf championship in a three-way playoff here today.

Philles 8, Cubs 7

CHICAGO, May 25 (AP)—Old rivalry Johnson came to the rescue of the Philadelphia Phillies today, stopping a Chicago Cub rally on run short of a tie in the ninth and final inning.

Stocked Locally at C. C. Anderson

Large advertisement for 'Hanes' underwear, featuring a cartoon character and text about the quality and variety of their products.

STOCKS FAIL TO HOLD TOP GAINS

Early Advances Reduced as Trading Pace Slacks in Afternoon

Markets At A Glance

NEW YORK, May 25 (AP)—The stock market today was characterized by a... Higher, rally in top of... Higher, rally in top of...

By FREDERICK GARDNER NEW YORK, May 25 (AP)—The stock market today was characterized by a... Higher, rally in top of...

Despite the hesitation apparent in the market, the Associated Press... Higher, rally in top of...

Trinidad to lift speculative sentiment... Higher, rally in top of...

General Motors, Chrysler, Glenn Martin... Higher, rally in top of...

Bonds, on the whole, ended moderately... Higher, rally in top of...

Stock Averages

Table with columns for various stock indices and their values.

Trend of Staples

Table showing trends for various staples like wheat, corn, and cotton.

NEW YORK, May 25 (AP)—The Associated Press... Higher, rally in top of...

NEW YORK, May 25 (AP)—The Associated Press... Higher, rally in top of...

NEW YORK, May 25 (AP)—The Associated Press... Higher, rally in top of...

NEW YORK, May 25 (AP)—The Associated Press... Higher, rally in top of...

NEW YORK, May 25 (AP)—The Associated Press... Higher, rally in top of...

NEW YORK, May 25 (AP)—The Associated Press... Higher, rally in top of...

New York STOCKS

Table listing various New York stocks with their prices and changes.

Table listing various New York stocks with their prices and changes.

Table listing various New York stocks with their prices and changes.

Table listing various New York stocks with their prices and changes.

Table listing various New York stocks with their prices and changes.

Table listing various New York stocks with their prices and changes.

SELLING ERASES WHEAT UPURNS

Prices Close Lower After Climbing to New Seasonal Highs

By FRANKLIN MULLIN CHICAGO, May 25 (AP)—Wheat prices rose to new seasonal highs today but then fell more than a cent under the weight of heavy selling...

Trading remained active in a continuation of the broad-based market opening last September's war scare but weather tempered bullish sentiment...

When closed 1/4 cent lower than yesterday, July and September 77 1/2, 1/2 and 1/2, respectively...

Other grains, except corn, reached new highs for the season...

NEW YORK, May 25 (AP)—Wheat prices rose to new seasonal highs today but then fell more than a cent under the weight of heavy selling...

NEW YORK, May 25 (AP)—Wheat prices rose to new seasonal highs today but then fell more than a cent under the weight of heavy selling...

Twin Falls Markets

Table listing Twin Falls market prices for various commodities like wheat, corn, and oil.

Table listing Twin Falls market prices for various commodities like wheat, corn, and oil.

Table listing Twin Falls market prices for various commodities like wheat, corn, and oil.

Table listing Twin Falls market prices for various commodities like wheat, corn, and oil.

Table listing Twin Falls market prices for various commodities like wheat, corn, and oil.

Table listing Twin Falls market prices for various commodities like wheat, corn, and oil.

Queen Chats With Workman

After participating in the ceremony of laying the cornerstone for the new Canadian supreme court building at Ottawa, Queen Elizabeth... King George looked on and smiled...



Queen Elizabeth and King George VI at the laying of the cornerstone for the new Canadian supreme court building.

After participating in the ceremony of laying the cornerstone for the new Canadian supreme court building at Ottawa, Queen Elizabeth... King George looked on and smiled...

Arrangements Outlined for Three-Day State Convention Sessions

BURLEY, May 25—The twentieth annual convention of the Idaho chapter of Catholic Women, affiliated with the National Council of Catholic Women will be held in Burley June 4, 5 and 6...

THEATERS

ROXY
FRI. Sat.—'Face of the Rio Grande,' 'Smilin' John Carroll,' 'Star's Smiles—'Mingling Danang,' 'Compas'—'Richards, Ann, Rochelle Hood'

MOTOR MAKERS INCREASE SALES

Distribution for Month of April 51 Per Cent Over Last Year's Mark

Factory sales of passenger cars and trucks during the month of April totalled \$59,200,000, according to the estimate of the Automobile Manufacturers Association...

During the four months of the present calendar year 1,417,770 motor vehicles were sold by United States and Canadian manufacturers...

March sales very nearly overtook the quarter, a gain of more than 46 per cent...

CLAUD C. PRATT
The people that have used Fratts Arkansas Motor Oil for a long period of time are our best boosters.

Curiously two men working independently calculated the location of the planet Uranus and reached identical conclusions...

CLAUD C. PRATT SALES COMPANY
On the Road to the Hospital.

POTATOES MEET AT BURLEY
Arrangements Outlined for Three-Day State Convention Sessions

THEATERS
ROXY
FRI. Sat.—'Face of the Rio Grande,' 'Smilin' John Carroll,' 'Star's Smiles—'Mingling Danang,' 'Compas'—'Richards, Ann, Rochelle Hood'

IMPROVE YOUR HOME WITH MOORE PAINT
Benjamin Moore Paints

SEED POTATOES
Published by the Twin Falls Times and Abstract Company

IDAHO SALES CO.
Kimberly-Jerome, Coaling

THEATERS
ROXY
FRI. Sat.—'Face of the Rio Grande,' 'Smilin' John Carroll,' 'Star's Smiles—'Mingling Danang,' 'Compas'—'Richards, Ann, Rochelle Hood'

THEATERS
ROXY
FRI. Sat.—'Face of the Rio Grande,' 'Smilin' John Carroll,' 'Star's Smiles—'Mingling Danang,' 'Compas'—'Richards, Ann, Rochelle Hood'

IMPROVE YOUR HOME WITH MOORE PAINT
Benjamin Moore Paints

SEED POTATOES
Published by the Twin Falls Times and Abstract Company

IDAHO SALES CO.
Kimberly-Jerome, Coaling

IDAHO DEPARTMENT STORE

"If It Isn't Right, Bring It Back"

Get Set for that
DECORATION DAY
Trip!

Let our big complete stocks of vacation and outing needs help make the task of getting ready an easy one.

Save on Picnic Needs in the Economy Basement

Package of 12 DIXIE CUPS	10c
Package of 6 DIXIE CUPS	5c
DIXIE HOT DRINK CUPS	8 for 10c
PAPER ICE CREAM DISHES	12 for 10c
9 inch WATERPROOF PLATES	12 for 10c
Chi-Net COMPARTMENT PLATES	6 for 10c
100 PAPER NAPKINS, Pkg.	8c
7 SPOONS or FORKS	5c
PICNIC BASKETS	98c
100 VACUUM BOTTLES	79c

Friday and Saturday
Decoration Day Special of
72 PAIRS
Women's Novelty Huarache

Summer SHOES
\$1.69

All New Spring and Summer Styles. Regular Values to \$2.98.
Smart heelless styles in strap effects. Cuban heels. Whites, tans, browns and whites.



FRIDAY AND SATURDAY
A Pre-Decoration Day Clothing Special

53
Fine All Wool
SUITS
To Be Sold For
\$10

These Were All Regular \$14.75 and \$18.75 Values
A real money saving opportunity! All wool, twists and worsteds in plain and sport backs. Pleated and plain trousers. Light and medium grays and tans! In regulars, longs and shorts.

Sizes 35 to 42
\$10

For
Decoration Day!

Indian Blanket Special
\$1.79

Main Floor — Dry Goods Dept.
Here's a fine large size Indian robe that measures 70x80 in size. The designs are typically Indian and are shown in colors of red, green, tan or gray. The ends are satine bound and the whole robe has an exceptionally lofty feel.

THE IDEAL PICNIC, VACATION AND CAMPING UTILITY BLANKET

These blankets were bought especially for this Decoration day event and will not be shown before Friday morning.

Tuesday, May 30th is
Decoration Day
GET READY!

60 Regular \$2.98 and \$3.98

SWIM SUITS
FOR WOMEN

CLOSED OUT
So They Can Be Sold
for **\$1.98**

IN THE DRY GOODS DEPT.
FRIDAY and SATURDAY

FABRICS
Wool — Lastex and Wool
STYLES
Mailot, two piece effects — skirt styles
ALL SIZES FROM 32 to 42
Every suit is guaranteed to be a first quality garment and a value as advertised.
COLORS
Whites — Pastels — Dark Shades
A DECORATION DAY
SPECIAL
Planned and bought months ago and packed away for this one event.



DRY GOODS DEPT.

PHOENIX SALT WATER TAFFY

25c Lb.

Oceans of flavor. Assorted to the box. Wrapped in cellophane covered package. Ideal for outings.



READY-TO-WEAR DEPT.

For All Outdoors Wear
SLACKS

98c and \$1.98

Solid shades. Some with slide fasteners. Adjustable, buckle waistlines. Very well made.

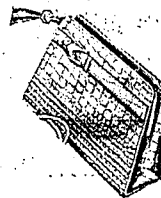
SLACK SETS \$1.98 and up

DRY GOODS DEPT.
New White Leather Bags \$2.98

Alligator straps in new and smart styles. Snowy white bags that will stay that way because they are washable.

Champions — Style Leader
The Belt of the Month
For June
As Shown in Vogue
98c

White kid with novelty buckle — new different!



MEN'S STORE
For Fun in the Sun You Can Always Count on a
JANTZEN

\$3.95 And Up

This year fabrics take the limelight. Some are patterned, some are light and soft. Practically all contain Lastex yarn for perfect fit, comfort and freedom.



GROCERY DEPARTMENT

RIPE OLIVES
9 ounce cans
12c

Fresh Fried
POTATO CHIPS
2 Pkg.
15c

RITZ BUTTER CRACKERS
One Pound Pkg.
22c

MAIN FLOOR READY-TO-WEAR DEPT.

Just Arrived in-Time for
Decoration Day

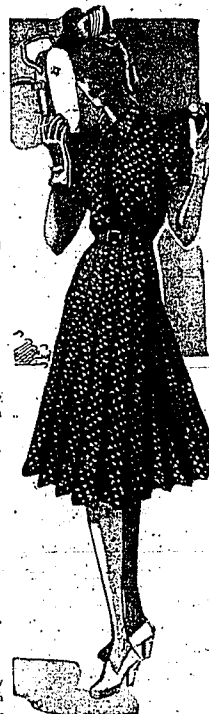
A SMART NEW GROUP
SPORT DRESSES

\$5.90 \$7.90
\$9.90 & \$11.90

Sizes 12 to 44.

BERNBERG SHEERS! RAYON PRINTS! SPUN RAYONS! COMBINATIONS OF CHIFFON, MATLISSE SHEER, SCARLET, OHARA SHEERS, MARQUETTE.

Lots of whites. Dots, stripes, florals. Away or at home, you'll love their young lines, fresh looking charm.



THE ECONOMY BASEMENT BUDGET DRESS SHOP

Features the Smart New Summer Styles at

\$1.98 \$2.98
& \$3.98

Whites, stripes, prints, florals, dots. They are all here in values that lend in fashion and low price. Some Members and Marketers in the assortment.

DRY GOODS DEPT.

Jantzen Swim Suits For Women \$4.95

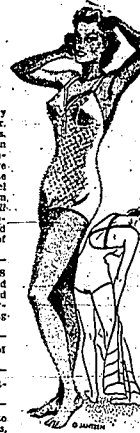
Jantzen swim suits are as gay as a May Festival this year. There are lush new colors. There are lovely knit-in Prints. Accent is on youthful contours, with up-curve bust lines and extra nip to the waist. Exclusive quarter-panel fashions give mailot-freedom with the flattery of a full-skirt. The new Glamour Fabrics are gorgeous, rich and lustrous with the sheen of sunshine.

BRADLEY SWIM SUITS \$2.98 and up. Wool and satin Lastex. In the water and out they give you true girly fit. Moulding and holding you snugly yet comfortably.

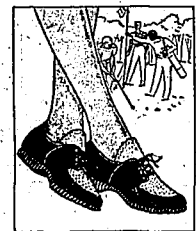
Misses' All Wool SWIM SUITS 98c. Sizes 8 to 16.

BATHING SHOES in assorted styles. 49c and up.

BATHING CAPS. 25c to 98c. Moulded head shapes, with or without chin straps.



Peppermint Candy Stripes To Flatter Your Sale!



Kedettes

Whenever summer's fancy takes you, Moccasin Kedettes will go smartly, too. Soft, flexible, easy to wear... colors to complement your play-top washable!

KEDSMEN FOR MEN
The new washable sport oxford for men
\$2.45

CLOSING OUT AT SPECIAL PRICES

5 SPRING COATS

1 Blue coat, size 38, Grey fur collar. Full length. Regular \$11.00. To close **\$2.98**
1 light tan full length spring coat. Size 42. Regular \$11.00 **\$4.98**
1 light tan, full length spring coat, size 46, regular \$14.75 **\$5.98**
1 full length tan coat, size 14, regular \$18.95 **\$10.90**
1 salmon shade full length coat, size 16, regular \$14.75 **\$8.90**

MAIN FLOOR READY-TO-WEAR DEPT.

Men's Waterproof Gokey Boot

The ideal boot for sport wear. The instep strap insures comfort by preventing slipping at the heel.

Priced **\$6.50, \$8.75, \$9.90**

Main Floor Shoe Dept.

Attend the Snake River Area Council Boy Scout Circus
Monday Evening, May 29th,
Twin Falls High School Gym, 8 P. M.
Admission: Adults 25c — Children 10c

VACATION TIME IS TRAVEL TIME



Your local automobile dealers offer tips for more enjoyable vacationing this summer in

1939's NEWEST AUTOMOBILES

Here's the ideal combination for the vacationer who is prospecting for a really enjoyable week-end—scenic southern Idaho and a brand new 1939 automobile. 1939 models are the last word in design, roadability, economy and performance. Gathered here are the offerings of your Twin Falls automobile dealers who urge

you to enjoy a week-end or a month in Idaho's lovely out-of-doors—and to enjoy it even more in the finest of automotive creations—a 1939 automobile. See these newest models at your dealers NOW and prepare for that vacation trip with a first important investment—brand new transportation.

WHERE-TO-GO and WHAT-TO-DO!

... and if you need a tip for a week-end trip or a month, here's the information you've been wanting. Following the popularity of last year's "trip-tips" in a where-to-go and what-to-do edition, new ideas on vacationing are presented herein. Road information, directions, points of interest, facilities offered at leading resorts... all this to interest the person vacation-bound. For the fisherman

there's a wealth of "dope" on streams and their conditions . . . how to reach them. The opening of fishing season spells a high point of activity for Magic Valley residents and their needs have not been overlooked in this catalogue of scenic and sports centers. You are urged to save this section for future reference for your own summer activities. Or if mailed away, it may serve to invite friends and tourists to view the beauty of Magic Valley.

Idaho Streams Demand Heavy Fish Plantings

State's Waters Adequate to Support Casting Sport If Properly Stocked

Idaho has enough good fishing water to supply native fishermen and tourists with adequate fishing—if the waters are properly planted annually with fish. G. W. Grebe, Kama, director of the National Wildlife Federation, reported in a recent survey.

Manuscript offered by Grebe at the Idaho game conference held at the University of Idaho, Moscow, in December, 1937, and the University of Idaho, Southern Branch, Pocatello, in March, 1938, follows.

"The future of sport fishing in Idaho, as in other states, depends upon the management of our available water supply. The number of people who so increased more than a hundredfold during the past 10 years. We take out of the streams of this state within 10 days of the season opens the equivalent of all the fish that are planted and grown each year.

After making a survey during the summer of 1937 which covered most of Idaho, British Columbia, and Yellowstone park, I am of the opinion that we have enough good fishing water in state of Idaho to supply the demand of all the licensed fishermen of the state—this includes a liberal tourist trade in addition, provided the waters are adequately stocked and managed. Before this is possible, several changes must be made in present fish-and-wildlife fish culture practice.

First of all, we need to survey our streams to determine where, what, and how to plant. It is useless to plant fish where the food, temperature, stream flow and abundance of predatory fish preclude the possibility of survival of the plant.

"In our clear, cold mountain streams, native trout are the only fish which are native, and where? is now an unsettled question. In our warm, rolling streams, we should plant bass, muskellunge and other species. While we struggle and strain to bring back fish to our trout streams, we are allowing trout-loads of first class bass food to waste in our warm, rolling streams. The Snake river from Hagerman to Huntington, the lower portions of the Snake river from Hagerman to Pocatello, sloughs and lakes too warm and roily for trout are choked with trout-loads of bass food.

Second, we should establish and stock sufficient brood ponds in complete isolation from the main stream. Today there is not sufficient brood-stock left at spawning stations in the state to supply the needs of the hatcheries. Bass hatchery, and brood ponds are especially important for the stocking of our warm roily waters.

Third, our planting program should be based on a systematic planting of all suitable streams in accordance with stock-pooling and the capacity of the streams to support the different species of fish. Currently, our planting program is dictated by political expediency regardless of needs.

Fourth, we should commence stream improvement work as soon as we have water of the right depth and in constant supply. There must be free flow of water in the streams for young fish. The water must be free from pollution and reasonably free from continuous siltling by floods at times of heavy rain or melting snow, and, last but not least, the streams must have sufficient quiet water for early high temperature throughout a long summer season to insure food consumption and rapid growth of insect crustaceans and other forms of aquatic life.

The least expensive and most effective stream improvement work which may be undertaken at once is the reclamation of beaver. With a colony of beaver working on a section of the stream, we will have a series of high check dams under constant care and attention, with a gang of little maintainers, keeping them in repair.

As an example of what can be expected in Idaho if such a scientific program is worked out, let me cite an example in the Yellowstone park. The famous Yellowstone river supplies 2-pound cut-throat trout in sufficient numbers to satisfy the greatest demand made upon any single stream in the United States. The United States bureau of fisheries is planning approximately 6,000,000 cut-throat fry in this stream annually.

"There are several streams in Idaho where the conditions for fish are just as ideal or better than those in the Yellowstone river. They lack only a connection to a large body of water such as the Yellowstone lake. I feel sure that with adequate stocking and management, our streams would soon meet all the demands of the fishermen of the state.

If it can be done in the Yellowstone, in Wisconsin, and Michigan, it can be done in Idaho."

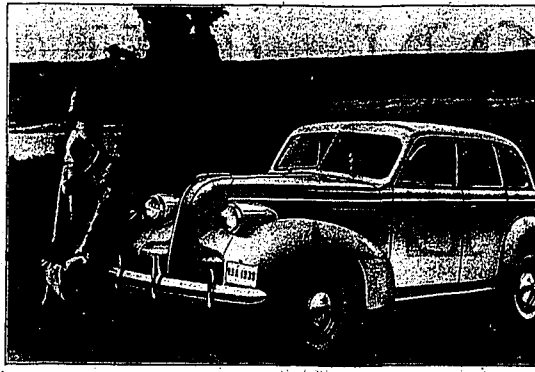
Experience Gained in Running City Vancouver, Wash.

Vancouver, Wash. (AP)—The Vancouver city council is expected to meet every day a chance to find out from the inside, the difficulties of administering municipal government.

Having a "boys' day" where young boys become city fathers, is nothing new, but Vancouver is allowing unions to take over city government. Union members will key post boys.

Mayor A. N. Stanley said the same privileges would be extended to their members and business men they can become familiar with our problems.

Streamlined Beauty Keynotes New Buick



BEAUTY IS ACCENTED in the design of the 1938 Buick cars which feature a distinctive new hood treatment and bodies with 20 per cent greater driving vision. Above is shown the Series 40 Special four-door sedan, a popular model in the lowest priced of Buick's four lines of cars.

Twin Falls Called Center Of Vast Recreation Area

Compelling Attractions for Tourists and Homefolk Found Throughout Snake River Valley

Twin Falls is the center of a region generously endowed by nature and marvellously developed by man, which holds out compelling attractions to an increasing tourist-trade as well as providing an everlasting array of vacation trips for local residents.

The city is located at the junction of the Old Oregon Trail, now U. S. highway 30, and the International Four-States Highway, formally named U. S. highway 93.

It is the tourist cross roads of highways from eastern points to the Pacific Northwest and California and from Old Mexico to the provinces of Canada.

At the center of the area that Snake river descends like a sweep through southern Idaho from the headwaters in the Yellowstone region to its confluence with the Columbia at Pendleton, the Twin Falls country lies between two mountain ranges.

On the north are the Sawtooths, rugged peaks abounding with possibilities for recreation that lately have been brought to world-wide attention through developments at Sun Valley.

On the south are lower hills, until lately frequented only by occasional sportsmen, hunters and prospectors. Construction recently completed by the Civilian Conservation Corps in cooperation with the national forest service of a scenic road along the northern slopes of these hills has opened up a new recreational field that is certain to claim increasing attention.

A system of well improved roads leads now to all of the better known fields for recreation and sport in this vast region, though there are yet hundreds of square miles of virgin territory outside the spanned primitive area where solitude rules undisturbed.

Outstanding among the scenic attractions of this area, and in fact of the country as a whole, is Shoshone Gorge, five miles northwest of Twin Falls. Though stripped of much of its former grandeur except for a few weeks during the spring flood season, the majestic waterfall where the river plunges 215 feet—10 feet higher than Niagara—still maintains its reputation as a center of interest throughout the year.

Vividly colored flood lights play on the mighty cataraught during the flood season and illumine the tiny spray which when the river is reduced by irrigation to a mere trickle. The city of Twin Falls in cooperation with the Works Progress Administration, is completing an extensive program of landscaping and road building and the falls now is the setting for many short excursions into the outdoors.

Below and above Shoshone Falls

Below and above Shoshone Falls

Below and above Shoshone Falls

Future Roads Safe, Free of Congestion

Engineers Design Highways for Increased Speed and Doubled Traffic Volume

Picture motor traffic of the country doubled but moving with little or no congestion, at increased speed but with vastly improved safety.

That's what the highway engineers have blueprint for 1960—20 years from now.

It's a big order, but its biggest part will be the junking of old ideas and old methods which have survived from the days of horse-drawn vehicles, and substitution for them of strictly scientific planning.

The blueprint is laid out in a report just submitted to the federal congress by the U. S. bureau of public roads. The findings, built up on the most reliable and detailed data on all the traffic factors on thousands of miles of highway, are simple and direct.

1. Trunk-line, toll-financed, super-highways across the country won't work. Traffic doesn't move that way.

2. Tougher, and perhaps most important job is to get vehicles into and out of cities rather than around them. Most people are going to town.

3. Gooding county—city of Ruckelshaus and the Hagerman valley; Banbury hot springs near Thousand Springs; Clear Lake; Upper and Lower Salmon falls; Mould river canyon; Devil's Washburn; five miles below Shoshone falls; the walls are sheer for almost 700 feet.

"Twin Falls, above Shoshone falls, are no longer twins inasmuch as one of the region's scenic attractions, and on down the river, five miles west of Filer. At Filer Falls, so named because the peculiar formation of the rock in the river channel causes the water to descend in an apparent spiral as it pours through the partly obstructed channel and then drops over a series of ledges.

Forty miles east of Shoshone falls, at the mouth of Salmon river is the mouth of Filer. At Filer Falls, so named because the peculiar formation of the rock in the river channel causes the water to descend in an apparent spiral as it pours through the partly obstructed channel and then drops over a series of ledges.

North of Filer and on the north side of the river are Clear Lake, a center for fishing, golfing and other recreations.

Lined by the Idaho Encyclopedia as points of interest in the group of

the mandolin achieved its greatest popularity in 1878 when Princess Margherita of Italy took up the instrument and introduced it into her court.

Local governments do not, and won't have the funds needed to acquire land for the orderly development of traffic-ways for the future. They are treated by the federal government as a hindrance or other condition from which they are to be protected both by the federal government.

So, the Bureau proposes that the federal government create a land authority to acquire wide strips of both city and country development.

And lease them to the states and cities on a basis that will return the investment over a period of many years. Also needed will be authority to control the right of access to the highways, to end the practice of cluttering a main traffic artery with unsightly stands which add to traffic hazards.

Approaches to cities, where the traffic is, is, need divided four-lane roads, separated from cross traffic. The cities also need belt lines to distribute traffic to other highways.

Only a relatively small amount of highway is going to call for a greater than two-lane width. Most roads need only a light stream of traffic which can be well spaced out. The troubles of these roads however, are very real and also spring out of right-of-way conditions. They were built for slower and far less numerous vehicles and in the main still suffer from excessively short

curves, excessive grades, and inadequate sight distances in which drivers must plan their speed, stops and passing operations without becoming "luxury 80." They will need to be adequate not only to today's engineering, but ready to qualify for service under the cars of 1960.

Tennessee pays tribute each year to the music of a mile festival held in Columbia.

ENJOY every VACATION with an EVINRUDE



An Evinrude makes every vacation more enjoyable for every member of the family. It's so simple, it's so inexpensive. It gives you a chance to really get out and go places for better recreation—better fishing.

LUD A. DREXLER PHONE 685-1V 222 Second Avenue West

The BOSTON CAFE

Get an early morning start and plan to breakfast in Shoshone. You'll find our Cafe a clean, inviting place with good food a standard for satisfaction! Plan your fishing trips so that you can dine with us, too!

We extend a cordial welcome to Memorial Day travelers... stop in!

ENJOY your VACATION DRIVING A BUICK-PONTIAC OR GOOD USED CAR FROM BROWNING'S



Plan your vacation now with an automobile from Browning's!

An overnight trip to the Sawtooths... or a three thousand mile drive on a two weeks vacation... a Buick or Pontiac will get you there and back easier and with real economy. Too, if you are a used car buyer you'll find our stock of used cars has a reconditioned model to suit your needs and purse.

BUICK SEDAN—1936 model 41. Six wheel model with extra large trunk. Radio, heater, '39 license. Special \$565

PONTIAC COUPE—1937 model. Heater, new tires. A beauty for \$550

CHEVROLET COACH—1934 model. Extra good shape \$295

See The Best Automobile Buys at BROWNING AUTO CO.

BUICK PONTIAC

SWIM for health and pleasure

Nat-Soo-Pah Invites You

Spent your week-ends at this popular Shoshone Idaho Resort where a cool, refreshing swim will refresh you in a large and enticing pool. Shady picnic grounds beckon to young and old alike. Popular prices!

DIRECTIONS: Nat-Soo-Pah is only a half an hour's drive from Twin Falls. Follow highway south to 2 1/2 mile post Heister, then turn left for about 3 miles.

Samuel taken from pool has been OK'd by state of Idaho Dept. of Public Welfare as safe for domestic use.

for the most enjoyable DECORATION DAY VACATION

VISIT THE Sawtooth Country

Make the most of your one day holiday—drive to Hailey and the friendly atmosphere of our town. It's the way to the Sawtooths. Give yourself a full day by making reservations for Monday night.

SWIMMING POOL In Connection!

Hiawatha Hotel HAILEY, IDAHO



Sawtooths Excel As Scenic Vacationland

Snow-Topped Mountains, Rugged Canyons, Fishing Characterizes Northland

North of Twin Falls lies a vacation wonderland which for varied scenery has few equals in the United States. In this old days one-way roads and steep, hazardous grades kept many motorists from visiting the more remote parts of this remarkable region, but one may now reach many of them on wide, improved thoroughfares.

Crossing the rim-to-rim bridge spanning the Snake river canyon the motorist travels on a paved highway as far as Ketchikan.

NEW FEATURES MARK CHEVROLET

Aero-Stream Bodies Combined with Mechanical Advancements

Continuing north and tapping Timmerman hill, the mountain-topped Wood river valley, with its agencies, cottonwoods and lush green meadows, comes into view. To the left is the storied Wood river, famous for its lightning trout. To the right, across the wide valley is Silver creek, also noted for its trout. The motorist arrives at the junction near Pico Peak and Carey and the fine new government highway leads to the Graters of the town north of Shoshone. Here, in one of Nature's largest refrigerators, the motorist sees a fine view of the terminus lake. The side road to the east is clearly indicated by highway signs.

From Ketchikan the road leads to the mouth of the Snake river. The motorist arrives at Bellevue, then Halley and moves on to Ketchikan, scene of the famous Snake Valley and Challenger resorts, which have received national-wide publicity. From Ketchikan the road leads in three directions. He may turn up heavily timbered Warm Springs canyon, following the newly completed road leading over the summit and on to Fairlight. He may negotiate the grade over the Tustumne divide and view the Mackay canyon. Or he may follow the main highway up Wood river, pausing at Easton hot springs 14 miles from Ketchikan for a plunge in natural hot water, climb over Colena summit and dip into the majestic Salmon river country.

Four Beautiful Lakes

Only a few miles from the foot of the summit and reached on good side roads are four of the most beautiful lakes in Idaho—Pettit, Allure, Big Redfish and Clear lakes. They are surrounded by dense evergreen forest. They are worth seeing. Returning to the highway from these short, side trips the traveler reaches his way through a natural rugged country to the isolated town of Stanley, 65 miles from Ketchikan. Here at Howard Robinson is a famous resort. As the speedometer records the miles the Salmon river grows steadily larger, offering numerous inviting pools for anglers. Sportsmen wishing to try their luck at salmon fishing should visit the Yankee Pool of the Salmon river. Many large salmon are bagged every year on this branch of the river.

Not only is the Sawtooth range famous as a fishing area, but it offers some of the finest game hunting in the United States. Thousands of deer, both mule and annually, American outdoor magazines have long paid tribute to this region as a game preserve.

Among the better-known fishing streams are Big Wood river, Silver creek, Warm Springs and the Salmon river. There are innumerable other streams and rivers. Some of the best trout fishing can be enjoyed on the pack trail to isolated, hidden lakes.

VARIED ACTIVITY AT CLEAR LAKES

Bull Resort Boasts One of Gem State's Finest Golf Courses

One of the northwest's largest privately-owned commercial fish hatcheries and undoubtedly one of the Gem State's finest, golf courses is to be found at Clear lakes resort, north of Boise.

To reach this scenic recreation spot, turn north at Bull and cross until the Snake river is crossed by a steel and concrete span. Watch carefully after you cross the bridge, and you will see the road leading to the left—entrance to the grounds.

It is not surprising to see from two to three hundred people at the resort on a summer Sunday. Here, in addition to fishing, are tennis, swimming, picnicking, hiking and other activities. Inquire at the resort at Clear lakes.

The ranch property is owned by Mr. and Mrs. C. E. Spiker and the Clear lakes Golf club leases and operates the golf course. The nine-hole course and an ideal clubhouse is built in rolling, rugged country and fairways.

At the point where the stream drops down over Devil's Washboard, the Idaho Power company recently built a power unit producing power for the Clear lakes and the Snake river. An open stream enters the Clear lakes from the south and empties into the Snake river.

Clear lakes resort offers an outstanding picnic grounds with park benches, tables and convenient stores. Trees are in the park and the grounds are kept clean and sanitary. There is a concession stand on the grounds.

Student 'Rescued' From Face Cast

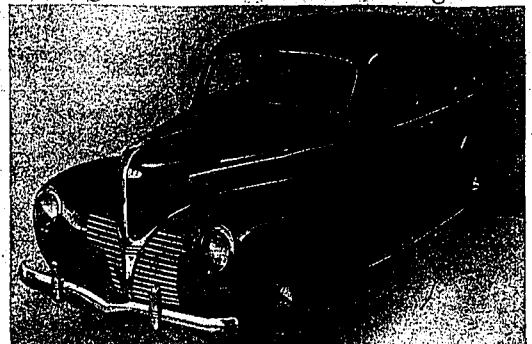
BUTTE, Mont., (AP)—In a ceramics laboratory period at Montana School Mines the student was making plaster of paris casts and some of the students suggested they try a student's face.

Bob Blewett volunteered. The moulders carefully followed directions and emerged his face in plaster. Everything went fine until the cast was ready to be removed. The removal, it wouldn't budge. All the suggestions in the textbooks failed.

After a half hour's wait the student, gave up, called authorities and Blewett was taken to hospital. Doctors finally discovered that Blewett and his plaster were mixed together. The plaster was removed, it wouldn't budge. All the suggestions in the textbooks failed.

After a half hour's wait the student, gave up, called authorities and Blewett was taken to hospital. Doctors finally discovered that Blewett and his plaster were mixed together. The plaster was removed, it wouldn't budge. All the suggestions in the textbooks failed.

Dodge Combines Grace with Strength



SLENDER GRACE, combined with strength and symmetry, marks the exterior of the new Dodge Luxury Line. Road illumination for night driving is made safer by headlamps set flush into the front fender curves where they are 13 inches farther apart and 4 lower to the road.

MANAGER TELLS PONTIAC'S GAINS

Company Official Reports Increased Production to Meet Demand

From the date of its introduction in January 1938 until April 1, 1939, Pontiac Motors have built 1,769,136 Pontiac cars, according to H. J. Klinger, general manager of the company.

"It took nine years and four months to build the first million Pontiacs and only four years for the next 700,000, a figure that was reached about a month ago," said Klinger. "At the rate we have been going the second million will be reached about a year and a half from now."

FAMED CANYON STILL TOURIST ATTRACTION

Thrilling earth movements caused by volcanic activity

In July and August of 1937 newspaper stories brought a deluge of curious tourists to Bull's new famous "sinking canyon."

The newspaper headlines of that time are still the best headlines of today and thousands more are expected to visit the phenomenon each this summer.

The canyon is still one of the most scenic attractions in this state. It is located on the H. A. Johnson farm, approximately six miles west of Bull on the highway, one and one-half miles from the Ring corner. Since the attention has been publicized and commercial, directional signs point the way to the Snake river valley north of the canyon.

The farm is located on the Griffin estate where cracks in the ground were first noticed three or more years ago, but the land was farmed until the time it started to sink about the last week in July, 1937. At that time, with reports like muffled dynamite below the surface, the land over an area of nearly 20 acres dropped from 1 to 300 feet forming an awe-inspiring canyon.

Births at Matanuska

Average One to Family

PALEY, Alaska, (AP)—Since the government-sponsored Matanuska valley colony started in 1935 there have been enough babies born for one to each family.

The 200-mark was reached this spring with the birth of a child to Mr. and Mrs. Clarence Tolan of Lincoln, Wis., but the mark was not reached for the state which brought more babies to colonists in March.

The usual colony group consists of 200 families.

Pittsburgh possesses some of the largest bus fleets in the world.

RESORT RECEIVES ADDED PRESTIGE

Outboard Motorboat Racing Featured Annually at Thousand Springs

Thousand springs resort, known for many years as a fishing and pleasure spot, has featured prestige in Idaho as the site of superb races in water on the Snake river for the first time in the outboard motorboat.

In the spring of 1938 and again last May 14, speedily outboard craft churned the water of the Snake river in a dramatic display of craft before 6,000 spectators who lined the banks.

This has become one of the most popular events in South central Idaho with its interesting and spectacular participation of hundreds of pushing spirits, pouring millature waterfalls down the side of the river.

The event is owned and operated by Charles Winn.

It is located in miles west of Bull on the Snake highway, approximately 100 miles east of the Owyhee bridge. Water's edge, starting 400 feet across from the Thousand Springs and the park banks towered about a 100 feet above where fishing tackle, seat drabs and campers' supplies are piled up.

Huge spectators may take advantage of the picnic grounds or secure refreshment food at the park.

The park offers outstanding beautiful facilities and one of the finest stretches of deep water for speed boat racing along the Snake river exists at Bull to Thrift corners.

As the mighty sides of the new sawing covers stretched wider to engulf valuable farmland, red yellow dust clouds would puff into the air.

Tower Erected

Since the history-making event occurred on the Robertson ranch, the owners have erected an observation tower and fenced off the area as a protection to public safety. With the treacherous land threatened to slip with a roar into the chasm, spectators are kept at a safe distance from the "sinking canyon."

Thousands have paid admission to view the startling sight of level land sinking 300 feet, and cars from every state in the union have been listed as bringing spectators to the spot.

If you haven't seen the "sinking canyon" yet, drive out, and marvel at a phenomenon known only to Idaho.

MILLIONS DRIVE TO WORLD FAIRS

Expositions Expect 6,000,000 Visitors by Automobile

With a World's fair at either end of the continent, this year, extensive preparations have been under way to accommodate the 6,000,000 persons expected to travel to these expositions by automobile.

New York World's fair officials expect 3,500,000 visitors by automobile and city and state have spent about \$50,000,000 in improvements for their reception, including betterments in highways, bridges and landscaping. Six hundred miles of city streets, which have improved lighting; 90 miles of arterial highways leading to the fair will be illuminated with amber lights.

Five parking lots on the fair grounds will accommodate 20,000 to 40,000 cars, while "Trailer Town" is laid out for 5,000 people, living in their own little rolling homes.

Officials of the Golden Gate Exposition are planning on an automobile visitation of 2,000,000 persons in 1939. The parking area on Treasure Island will accommodate 12,000 cars at one time.

FISHERMEN ATTENTION!

The Fishermen gather at our Cafe in preparation for week-end fishing trips. It is always a pleasure to serve them—and we welcome them again this year at the beginning of the fishing season. Here's to a successful "opening day" and a big catch!

Meet Your Friends at the **MANHATTAN CAFE** SHOSHONE, IDAHO. Closest to Best Fishing. OPEN ALL NIGHT.

What 1939 Car Gives More Value Than Ever Before..



YET SELLS FOR EVEN LESS MONEY?

The New 1939 DODGE

GIVES you the answer. Even in a year such as this, when most all the cars boast new design, new beauty and new luxury, America's motorists are still thrift-minded. They still want the most for their money.

"What 1939 Car Gives More Value Than Ever Before... Yet Sells for Ever-Less Money?" ... This is the question motorists are asking. In reply, Dodge simply asks, "Why not take a look and decide for yourself?"

See It... Drive It At...

Magel Automobile Co.

DODGE Distributors PLYMOUTH

DODGE DEALERS: Scelfield Motor Co.—Rupert, Idaho; Hagan, Garay, Shoshone, Idaho; Burley Motor Co.—Burley, Idaho; Thorpe Motor Co.—Jerome, Idaho; Harris Motor Co.—Buhl, Idaho.

Information...

will be gladly given on stream conditions, successful flies or bait, road conditions—and whatever else you need to know about

SILVER CREEK FISHING

- FISHING TACKLE • GAS • OIL
- SANDWICHES • COLD DRINKS

Come In And Ask For **CHUCK ATKINSON** AT **SILVER CREEK SERVICE** PICABO — IDAHO

SEE DE SOTO FOR THIS YEAR'S BIGGEST Automobile Thrill



People who know will tell you that you have to see and drive the new De Soto. Here is the car whose sheer beauty, rugged construction and unexcelled performance will give you your biggest automobile thrill of the year.

Visit our show rooms and be convinced!

BAISCH MOTOR CO.

Pheasant Hunting Gains Nationwide Recognition

Hunters Train Guns On "Chinks" As Native Upland Game Birds Diminish

South central and other parts of Idaho have become nationally known in recent years for superb hunting of upland game birds, especially of Chinese pheasants.

But Idaho's valleys and forests once teemed with countless numbers of sage grouse, blue grouse, pintail grouse, ruffed grouse, Franklin's grouse, California valley quail and California mountain quail.

Some are near extinction; all exist in greatly diminished numbers in the Gem state. New upland birds from other parts of the country have been brought here for transplanting.

H. B. Murray, Idaho state agent of the U. S. Biological survey, in a paper for the Idaho game management conference held at the University of Idaho, Moscow, and the University of Idaho, southern branch, under sponsorship of a school of forestry, pointed out that "none of our native upland game birds is deserving of any of our types of land utilization."

Murray's history of upland birds, their present numbers and prospects for the future, as outlined in his discussion, follows:

Sage Grouse
Sage grouse frequently the entire area covered by sage brush plants of the Snake river valley, the foothill areas and, to some extent, well up into the upland mountain valleys in which sage brush was found. The blue grouse were found nesting along the foothill areas and well into the forest of the valleys.

The blue grouse were first nesting along the foothill areas and well into the forest of the valleys. They spent their winter months in the high, wind-swept ridges where Douglas fir and limber pine flourish in abundance and were frequently very suitable habitat, from the Canadian boundary to the southern Idaho boundary.

Pintail grouse extended from the Teton Basin in southeastern Idaho. They frequented the true bunchgrass hills and hummocks of the northern Idaho Canyons, and Pausa areas, and the foothill slopes of all southern Idaho, extending well back into the heavily timbered sections, but not into the high upland valleys.

The valleys along small creeks, streams, and the main river courses surrounded by the springing of the aspen-birch of the ruffed grouse, white throughout all Idaho. They were found in a mixture of wooded areas, with and without aspen.

"Foot Hen"
Around the upland lakes and meadows and in the spruce-fir forests with characteristic salmon-colored markings above eyes, were found. Some were distinctive in color compared with blue grouse, and very close to correspond to normal surroundings—this bird showed an interest for human intrusion.

They are the true "foot hen" of yesterday, today, and tomorrow. They were found in the spruce-fir forests from the Canadian border to the southern and eastern extremities of the Sawtooth range, and well into the extreme eastern drainages of the Salmon river in the vicinity of Challis and Lander.

Some few scattered Chinese pheasants were found in the extreme eastern portion of Idaho in the vicinity of Teton basin. Enormous coveys of California mountain quail were once found along the main course of the Snake river in the vicinity of White-bird extending south to the vicinity of Shoshone falls in the Snake river canyon to the vicinity of Twin Falls and extending well back into the mountainous ranges adjacent to the open valleys and plains.

It is reported that this bird was at one time comparatively numerous along the section of the Snake drainage, extending from Lewiston to Stites.

California Quail
Late numbers of the distinctive blue California quail were once found in the low-lying valleys adjacent to the Snake river, extending to American Falls in southeastern Idaho.

With its characteristic plume, in the case of the male, and the small upright plume of three small feathers in the case of the female, this bird is essentially a creature of the sagebrush plains, extending to some extent into the low foothills and adjacent valleys. Feet of foot, it depended largely on speed on the ground rather than flight in the air to escape natural enemies.

In contrast to conditions of yesterday, the bird today lives in the range of many of these species is being reduced. The plow, the axe, fire, drought and other methods of land surface, have reduced the better cover and cover areas to less than 20 per cent of the optimum or maximum conditions of 30 years ago.

Sage hens are found only in small

ultural practices and for sustenance.

Partridges are a member of the quail family and demonstrate true quail characteristics in their behavior. They are found in considerable numbers in valleys, low foothills, and prairie sections of Idaho, extending from the Snake country north of Moscow south to the vicinity of Twin Falls and east toward Pocatello. They produce large coveys under favorable circumstances and die like flies in winter overtake them in areas where cover and food are scarce. They usually frequent the low foothill areas and along the "breaks" of stream courses and canyons. They feed on seeds and grasses and the greater percentage of their time in sections where cover is reasonably ample. They show great promise as a bird to supplant or replace our depleted pintail grouse, since they frequent areas where once heavily utilized by this bird.

Bobwhite or Virginia quail have been introduced into a considerable portion of Idaho. They are one fairly numerous in the vicinity of Boise, and are found in the Clearwater drainage on both sides of the river, extending upstream to their source in the mountains of Idaho they have been more or less numerous in the Boise valley from the mouth of the Snake river south of Boise. At times they have been fairly numerous in this valley, but in various points in southeastern Idaho, but without any regularity. Planting have been made at various points in southeastern Idaho, but without any regularity. Planting have been made at various points in southeastern Idaho, but without any regularity.

The past present and future of our native upland game birds has been, is, and will be, dependent directly on our types of land utilization. Only insofar as we return to a more natural use of our land resources can we hope to restore our native upland game bird populations.

For a more complete and adequate report on the present and future of our native upland game birds, the reader is referred to the report of the U. S. Biological Survey, which is available in the office of the Game and Fish Commission, Boise, Idaho.

Wine World Fame
Even within the high circumscribed walls of cased Snake river canyon, that cast long shadows before the sun has fully set one does not feel deprived of the feeling of freedom gained in life spent in the "wide open range country" bordering the historic site.

Artesian Resort
In the foothills seven miles south of Murtaugh lies a natural hot water swimming pool, known as Artesian, in the south central Idaho. It offers a different type of swim and picnic.

The pool is five feet by 60 feet in size, and filled with water from artesian wells, a small dance pavilion and concession stand, cream and candy are maintained. Round the natural hot water is a park with trees which may be used for picnics. Lunches and sandwiches are available on Sunday and may be had any time during the week by making previous arrangements.

Originally slated for mud baths, the first excavation was made about 1907 by a miner by the name of Charley Stoner. When it was found that the water contained little or no minerals and tested 98 per cent pure the first pool was erected. The same pool of about 25 by 30 feet is still in existence but is not used as much as the larger facilities.

The present naterium was constructed after purchase of the location in 1918 by J. H. Stoner. It was at this time necessary to install masonry to pump the water, which had before then flowed without assistance. The property is still owned by J. H. Stoner and his associates.

Advantages at Artesian offer an ideal opportunity for a midday or even an evening outing swimming and picnicking.

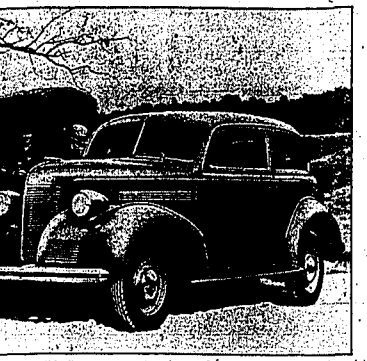
THE ARTESIAN
A natural hot water swimming pool, known as Artesian, in the south central Idaho. It offers a different type of swim and picnic.

Schweickhardt's
for the finest in bakery goods

Good food makes the picnic—and this is the place to find the finest in those extra-good things that top off a day's outing. We suggest that YOUR picnic start here for guaranteed success.

DECORATION DAY SPECIAL!
SATURDAY AND MONDAY
Prune Nut Layer Cake 39¢
Here's the real picnic cake that satisfies everybody.

Chevrolet Master 85 Town Sedan



SLEEK, GRACEFUL BEAUTY characterizes this five-passenger two-door sedan, one of the 1939 Chevrolet lines.

Perrine's Blue Lakes Historic Wonderland

Private Resort Invites Fishermen and Picnickers

Historic Blue lakes resort, steeped in the lore of Idaho pioneering and the Snake river's rugged canyon, was three miles north of Twin Falls, is a popular nearby resort owned by A. B. Perrine and Hortense Perrine. It is private property where some of the finest fishing and duck hunting in the south central Idaho can be enjoyed. Its facilities as a picnic spot is unsurpassed.

Blue lakes is the mecca of about a hundred people every Sunday and vacation day during the summer season. Individuals living on both sides of the canyon find the resort accessible, with south side people driving out the north side and north side people driving out the south side.

Wine World Fame
Even within the high circumscribed walls of cased Snake river canyon, that cast long shadows before the sun has fully set one does not feel deprived of the feeling of freedom gained in life spent in the "wide open range country" bordering the historic site.

Artesian Resort
In the foothills seven miles south of Murtaugh lies a natural hot water swimming pool, known as Artesian, in the south central Idaho. It offers a different type of swim and picnic.

Wine World Fame
Even within the high circumscribed walls of cased Snake river canyon, that cast long shadows before the sun has fully set one does not feel deprived of the feeling of freedom gained in life spent in the "wide open range country" bordering the historic site.

Artesian Resort
In the foothills seven miles south of Murtaugh lies a natural hot water swimming pool, known as Artesian, in the south central Idaho. It offers a different type of swim and picnic.

Wine World Fame
Even within the high circumscribed walls of cased Snake river canyon, that cast long shadows before the sun has fully set one does not feel deprived of the feeling of freedom gained in life spent in the "wide open range country" bordering the historic site.

Artesian Resort
In the foothills seven miles south of Murtaugh lies a natural hot water swimming pool, known as Artesian, in the south central Idaho. It offers a different type of swim and picnic.

Wine World Fame
Even within the high circumscribed walls of cased Snake river canyon, that cast long shadows before the sun has fully set one does not feel deprived of the feeling of freedom gained in life spent in the "wide open range country" bordering the historic site.

Artesian Resort
In the foothills seven miles south of Murtaugh lies a natural hot water swimming pool, known as Artesian, in the south central Idaho. It offers a different type of swim and picnic.

Wine World Fame
Even within the high circumscribed walls of cased Snake river canyon, that cast long shadows before the sun has fully set one does not feel deprived of the feeling of freedom gained in life spent in the "wide open range country" bordering the historic site.

CITY FOLKS LEAD IN CAR MILEAGE

Average Annual Travel of All Automobiles About 8,950 Miles

City folks apparently drive almost two thousand miles a year more than people living in the country, both rolling up their greatest mileage on the main highways.

Trucks average 1,250 more miles a year than passenger cars, but 67 per cent of passenger car use appears to be for business purposes.

Passenger cars travel 8,000 miles on primary rural highways and secondary highways and local roads, averaging 7,000 miles a year, get only 400 miles of city driving.

Airway Merchant Marine Expands

Miami, Fla. (AP)—Dade Sam's merchant marine of the Airways is spreading out rapidly southward from this international terminal.

Pan American Airways has practically doubled its clipper ship service to South America, adding more than 53,000 miles of flying each month.

Six different air routes now link North and South America, five of them originating in Miami.

English Pay \$65 For Air Training

LONDON (AP)—The cost to a pilot in the Civil Air Guard—a voluntary organization connected with home defense—from the time he joins "A license" is about \$65.

The biggest item is for flying lessons, which work out at about \$15, the remainder going for hotel, car-park, gasoline, overalls, "Certificate of Competency" badge and examination fee.

Tungsten carbide, used for the points of cutting tools in the automobile factory, is valued at \$500 a pound.

Thousand Springs Park

Offers a Real Memorial Day Outing!

- Fishing
- Picnicking
- Boats for Rent

Come and relax beside southern Idaho's own Snake River. Fishing, boating, picnicking—a real day's outing for every member of the family. Thousand Springs is Idaho's finest motor boating country.

Groceries • Gasoline

On U. S. 30 — Opposite Thousand Springs

"For All That's Best At Cost That's Lowest"

IT'S CHEVROLET

Chevrolet Is the Leader — Over Half a Million 1939 Chevrolets Sold to Date!



ALL CHEVROLET PRICES ARE MUCH LOWER!

It takes the best in motor car design, engineering and manufacturing to give the best in motoring results. Today, as always, Chevrolet brings you the best in modern motoring at the lowest cost in purchase price, operation and upkeep. See this car at your Chevrolet dealer's today!

SEE THE NEW CHEVROLET MASTER 85 LUXE. NEW COLORS, BEAUTY, LUXURY, APPOINTMENTS.

ARTESIAN • Schweickhardt's

for the finest in bakery goods

The spot for the ideal outing!

SWIMMING • PICNICKING • DANCE HALL.

TWO POOLS (large and small) STATE INSPECTED suits for rent

4 MILES SOUTH OF MURTAUGH

DECORATION DAY SPECIAL! SATURDAY AND MONDAY Prune Nut Layer Cake 39¢ Here's the real picnic cake that satisfies everybody.

SEE YOUR LOCAL CHEVROLET DEALER

GLEN G. JENKINS

313 MAIN AVE. WEST

CHRYSLER SHOWS COMPLETE LINES

Many Motoring Advancements Found in Groups of Beautiful Cars

Offered at Barnard Auto company, Chrysler's 1939 motor cars including the "fluid drive" are featured by beauty of design, increased horsepower, a steering-column gear-shift, an entirely new type of over-drive transmission, greater steering roominess and a large number of refinements that contribute to improvement in performance, increased comfort and safety and greater operating economy. The company again offers three lines, designated as the Royal, Imperial and Custom Imperial.

In number and importance the improvements made this year over the 1938 line are perhaps greater than those achieved in any previous model year. The wheelbase of the 100-horsepower Royal is 119 inches, of the 115-horsepower Imperial 124 inches and the Custom Imperial 144 inches.

The standard Imperial comes in four body styles, namely, four-door sedan, two-door sedan (touring) coupe and victoria coupe. The latter is fitted with two auxiliary seats. The Custom Imperial comes in five-passenger sedan, seven-passenger sedan and limousine body styles.

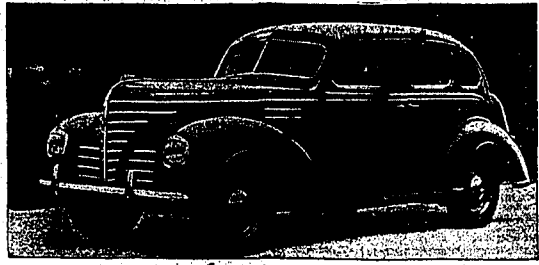
De Luxe Chrysler
In addition to the standard Royal line, a de luxe car designated as the "Royal Windsor" with special trim and extra equipment, is offered on this chassis. There also is a special Royal on a chassis of 138 inches for those who require an exceptionally roomy car. The standard Imperial line is augmented by two luxury cars. One of these is called the "New Yorker," a successor to the popular "New York Special" of 1938. The other, designed primarily for men and called the "Saratoga," is upholstered in leather and Bedford cord.

New Transmission
One of the most important advances in the 1939 line is the introduction of an improved type of transmission. Known as the "Cruise and Climb," in general principle this transmission is similar to the overdrive previously used in Chrysler cars but it is vastly more valuable to the average driver in that it is in effect at all times and it is available for a large part of city driving.

It is further improved by an entirely new self-act device which causes overdrive to cut out and conventional high gear to cut in when the driver pushes the accelerator to the floor.

RAINMAKER BY PROXY
SAN DIEGO, Calif. (AP)—Mean annual rainfall in this city has jumped 15 per cent through the personal efforts of Weatherman Dean Blake. Blake moved the official rain gauge to a spot where an updraft stopped blowing part of the precipitation away.

Plymouth Cars Offer 'Eye Appeal'



PLYMOUTH PRESENTS an impressive array of added features for greater comfort and luxury in the lowest price field. The models on display at Plymouth showrooms here confirm the forecasts that stronger "eye appeal" would highlight new auto designs for 1939. Inside and out, this newest Plymouth is completely revised. Headlights and fenders are streamlined into the fenders, and a new Vee-type windshield adds more than six inches to body length above the belt. Built on a longer wheelbase—now 114 inches—brand new features include soft-riding coil springs of Amola steel; new high-torque engine performance; remote control gear shift up on the steering post, and a new "m-f-y-high" speedometer that flashes traffic lights right under a driver's eyes.

DE SOTO OFFERS ROOMIER AUTOS

Simpler Shift, Increased Overall Length Feature New Models

Bigger, wider, roomier than any previous DeSoto ever built, the improved 1939 DeSoto cars are offered in Twin Falls at the Barnard Motor company.

DeSoto offers two lines of cars—the Custom and DeLuxe. The 1939 line includes the Custom four-door touring sedan, DeLuxe two-door touring sedan, Custom coupe, Custom coupe with auxiliary seat, business coupe with auxiliary seats, Custom seven-passenger sedan, DeLuxe seven-passenger sedan, Custom limousine and DeLuxe limousine.

All models are available in these colors: midnight blue, cascade blue, williamsburg tan, royal maroon, palace mulberry, streamliner grey and black.

The 1939 DeSoto is packed with new features. Here are a few highlights of the new car. Increased overall length of car to more than 200 inches. New ride formula with airplane-type hydraulic shock absorbers, rubber foot body mounting, independent front wheel springing, and scientific distribution of weight.

New "handy-shift," a simpler, easier way to shift gears; mounted right on the steering column, eliminating the old "wobblystick" gear shift in the floor.

Increased overall length of car to more than 200 inches. New ride formula with airplane-type hydraulic shock absorbers, rubber foot body mounting, independent front wheel springing, and scientific distribution of weight.

Germany now has in operation 1250 miles of super-highways, with 900 miles under construction.

Registrations of Cars Show Gain

Motor vehicles registered in 1937 totaled 22,703,220, representing an increase of 1,539,670 over the revised total of 21,163,550 in the previous year, according to state reports to the bureau of public roads of the U. S. department of agriculture. Latest total indicates 23,695,729 passenger cars, 4,255,226 trucks and 44,100 buses.

Highway usage increased that year, the bureau reported, not only because of the higher registration but because individual vehicles, on the average, were subjected to greater use. An indication of this is the fact that whereas registrations were up 8.9 per cent, gasoline consumption jumped 7.6 per cent in comparison with the year before.

A breakdown by states shows the sharpest gain in registrations last year was a 12.3 per cent rise in Arizona, followed by upturns of 8.9 per cent in Mississippi and 8.6 per cent in Michigan. Gains were also shown by all other states except South Dakota, where no change occurred, and Nebraska, where a fractional drop of 0.2 per cent was recorded.

Movies For Warships

LONDON (AP)—The British Admiralty officers soon have the biggest chain of cinemas in the world. Every surface vessel in the Royal Navy is soon to have its own film projector.

Salvor film fans, paying one and a half pence (3 cents) a week for seats, will be invited to make criticisms and suggestions on bookings.

Business Eye at 95.
WOODSTOCK, South Africa (AP)—S. Sharpe, 95, local shirt-maker, still believes in keeping an eye on business. He spends 10 hours a day at his factory in active supervision.

LUXURY, COMFORT IN NEW DODGES

Sleek Style Lines, Safety Features, Economy Stressed

Finishing down the rails, America's new streamlined trains have altered a continent, have raised rail travel to a new height of luxury and comfort.

And now the highways of America carry another "Luxury Liner," the new 1939 Dodge. It's an entirely new kind of Dodge with radical new style lines so sleek as those of the new streamlined trains. More room, more comfort, more gorgeous interior appointments, greater ease of operation, many new safety features and a motor that is "80th Dynasty" for economy and power. ... all these are offered.

B. P. Magel of the Mabel Automobile company states that never in his 20 years of selling automobiles has he had so many enthusiastic comments from new owners. He also said that the customer who believed such an outstanding accomplishment in this "silver anniversary model" that the percentage of sales over last year is increasing rapidly.

Girls of Today Make Own Rules

OMAHA, Neb. (AP)—After 47 years as a teacher and dean of girls, Miss Jessie Towne of Omaha Central high school is "tremendously optimistic about our boys and girls."

She observed, as she announced her retirement from a life-long career of dealing with the younger generation, that "we adults can't be proud of the job we've been rendering to them."

She finds present day girls more frank and down of girls. Miss Towne said that the modern girls are friendly and sincere than their predecessors, but regards their lives as ruled by conveniences as from-bound as during any other generation.

"Their conventions are not what their mothers teach them, but what all the other members of the younger generation do," she declared.

"Sleek, chic, long hair, short hair, jutting braces, cigarettes—if every one else in an adolescent's group adopts them, he or she must live up to the conventions, if the child doesn't wish to conform, her life becomes very unhappy."

Hasty Operation Saves Her Life

OHEAT FALLS, Mont. (AP)—When it came to emergency Charles J. Williams, oil field worker, meted 'em.

A ten year commotion drew his attention and he discovered one of his chickens, too up, in acute distress. Williams promptly diagnosed the case one of acute indigestion, due to overeating.

He rushed his razor called his wife to help him and quickly all the hen's crew, removing quantities of grain, dirt and pebbles. He sewed her back together with a common needle and silk thread.

By nightfall the hen was eating again and had to be restrained from joining the others at the feeding trough.

AMERICA LEADS IN CAR VALUES

World's Lowest Price Cars Produced in United States

Despite the fact that high taxes and operating cost in other countries put a premium on production of small low power automobiles abroad, the lowest price cars are produced in the United States.

Some standard automobiles can be purchased in this country at or under \$500, delivered at the factory, but nowhere in the world can this be done at the present time.

The high volume American makes sell for prices which let us somewhat higher, but the automobiles produced in foreign manufacturing nations are far smaller and less powerful than the cars preferred in the United States.

Most striking situation, however, is that while nearly half the makes offered in the United States are represented in price classes under \$1000 only one in ten German makes and one in five British, to the leading manufacturing countries abroad, American cars which are low or medium priced in the home market, however, sell for much higher figures abroad in view of the transportation costs and tariffs that must be added. An \$800 American car is likely to sell for \$1,500 to \$2,000 in European markets.

LUXURY MARKS NEW PLYMOUTH

Big Car in Low Price Field, Features Soft Ride, Striking Beauty

The new Plymouth—with high-grade engineering, new high-torque engine performance and a score of new luxury features for the lowest price field—has made a hit with the motoring public.

Headline the list of Plymouth innovations are new-type coil springs of Amola steel that give a 20 per cent softer ride; new remote-control gear shift on the steering column; new high-torque engine performance; new "true-speed" accelerator; a new all-steel auto-meal transmission and an ingenious new safety feature—a "safety" accelerator that flashes warning lights of different colors at various car speeds.

A zigzag, three powerful-looking hood now presents an added 10-inch sweep of painted surface that curves around to the new radiator grille. A slim, new rimless windshield adds more than 6 inches to body length above the belt.

Over-all length is now 182 inches, without bumper, and the new 114-inch wheelbase is 100 inches longer than last year.

Grille Shows "Airflow" Motif This year's grille is a new development of the latest horizontal pattern, and introduces the "lateral airflow" motif. A rich pattern of chromium strips and parallel louvers in body color curve slightly forward each side of a vertical center strip, then sweep back like an airplane flange to form the side of the hood.

The slight forward curve and radial highlights to the car's "face" along the center strip, and strike a new note of sparkling brilliance in grille design.

Every chromium bar accent the contour of the grille louvers in a curved "T" pattern—like the tall, sharp prow of the familiar Plymouth ship. At the narrow base of the "T" four louvre sections and their chromium accents are repeated at each side, on the front flare of the hood apron that joins the two massive fenders in front.

The new Plymouth front end again shows the influence of airplane design in the way grille and hood flow into the fenders in smooth round lines. Just like the modern airliner's cabin curves smoothly into the wing, so Plymouth's new design flows into the hood and fenders in a contact between fenders and other sheet metal.

DON'T Take Chances

With vacations starting soon and the fishing season opening this month you'll be driving your car more than ever. Be sure your car is adequately covered with reliable insurance.

INSURE YOUR CAR WITH US

Our policies meet the requirements of the Financial Responsible Laws.

LOCAL AGENTS

Lou Heller
Twin Falls
Phone 63 or 506

E. L. Lynch
Buhl
Phone 86

and don't forget EX-CEL

HAMS, BACON and FINE FLAVORED, TASTY LUNCH MEATS!

Decorating Day excursion, a week-end in the mountains or two week's vacation in Idaho's great outdoors, an important part of your supplies will be a selection of the finest prepared meats you can buy. Take a flavorful EX-CEL Ham, the ham that needs no parboiling, or a side of EX-CEL Bacon . . . and be sure you include a selection of those fine EX-CEL Cold Meats. Your retailer can supply you at remarkably reasonable prices.

Insist on Ex-Cel brand meats at your favorite meat counter

PACKED BY THE IDAHO PACKING COMPANY

Be MODERN Buy CHRYSLER

In Twin Falls the swing is to Chrysler . . . join the many Twin Falls people . . . and the thousands of people the nation over who are going modern by buying Chrysler. It's the modern thing to do . . . and it's the sensible thing to do.

These Are The Features That

ALWAYS LEARN TO DO *	THIS MEET WITH YOU!	MORE COMFORT FOR YOUR MONEY!
No hanging back at traffic lights . . . no lagging on Shifts easier, faster, more positively!	Chrysler's own Steering Wheel Gear-Shift Right under your hand Shifts easier, faster, more positively!	Body four inches wider at the wheelbase! Close-high seats, wide as divans! Wider, higher windshield and windows! Scientific springing and weight distribution!
the biggest This Chrysler loves to conquer . . . really loves to conquer! Jewel Power! Jewel Power! Jewel Power! Jewel Power! Jewel Power!	Absolutely tight conventional Jewel Power! Jewel Power! Jewel Power! Jewel Power! Jewel Power!	WOMEN BEAUTY, TOO! Forget this is a low-priced car and look at these superior Airflow styling! The last modern plastic enamel finish! The complete new interior with its heavy plastic-investment panel! A window . . . and today's best buy!

Make Chrysler The Modern Car!

Don't fail to see and drive the new "Fluid-Drive" Chrysler. It's the sensation of the automotive industry. "Fluid-Drive" makes gear shifting a thing of the past. Step on the gas to go and step on the brake to stop . . . that's all there is to it.

See Them In Our Showrooms

Barnard Auto Co.

'39 BUICK OFFERS COMFORT, BEAUTY

Engineering Refinements and Fleet Lines Featured in New Models

Buick, represented in Twin Falls by Browning Automobile Company, enters the 1939 season with the full momentum of an outstanding business year for 1938 and eight engine cars striking in an entirely new and stylish body. Engineering improvements of an important character have resulted in longer-appearing cars with flecter, rarer lines, a superior ride, improved stability and, in general, greater driver and passenger comfort and convenience.

The four models are, respectively the series 40 Special, the series 40 wheel base; Series 90 Century, with a wheelbase of 126 inches; Series 90 Roadmaster, with 130 inch wheel base and Series 90 Limited, with 140 inches.

An innovation which contributes to the striking appearance of the cars and which also has important engineering advantages is the adoption of extensively on European styling. This construction of the front aprons are set "low" in relation to center, in the front-end section between hood and fender. This not only results in better streamlining while emphasizing the low lines of the cars but also provides a more dignified hood with consequent improved vision and better cooling, because air is admitted under greater pressure.

All models now have Buick's "new" remote gear shift mechanism with the shifter lever under the steering wheel, thus clearing the front seat for a more spacious arrangement for the driver's convenience and safety will be found in the interior and throughout the car, including a new warning flash light signal, safety ignition switch, safety-free accelerator, legible instruments, better vision and necessary refinements even to a cigar lighter that pops out of concealment when, eliminating one-handed driving as ordinarily.

Any entirely new chassis design brings the Series 40 and 60 cars two inches lower at the rear while maintaining the front floor without a tunnel. This lowers the center of gravity of the car, increasing stability at the same time contributing to the long, low lines. For those who wish to even further emphasize the rakish streamlines of Series 40 and 60 cars, stream boards may be had in place of running boards. These are narrow, trim and their use gives added racy effect.

Another new option of the four-door touring sedan is the Series 40 and 60 on the two-door touring sedan on Series 40, the 1939 Duesenberg Top. This is the first production car in this country to be provided with the automobile roof which has been growing in popularity in Europe.

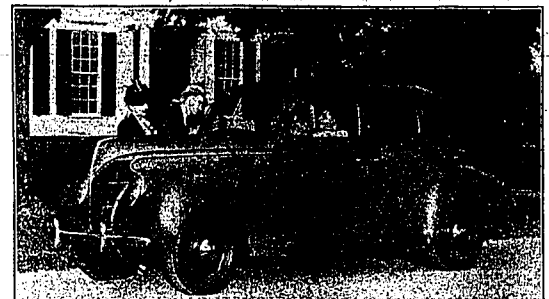
The Hand-Shift gear control for the 1939 Buick is a new feature. The shift lever extends at a right angle from the steering column just above the steering wheel where it is easily reached by the right hand. This new arrangement, which is as simple as it is efficient, is essentially the same as with the conventional transmission so that it is nothing new for the driver to learn. In addition to the new control, the transmission on the Series 40 has been completely redesigned, making it more compact, rigid and efficient.

Buick is the first car to provide a direction signal as standard equipment on all models. This important safety device, which operates through factory tests. With a flick of his finger the driver throws a switch mounted on the steering column. This illuminates a modified arrow in the lamp which is mounted at the rear in the center of the luggage compartment door. This arrow indicates clearly to following cars that a turn is to be made in the direction indicated. As the light is flashing on-and-off it naturally attracts attention. A small green pilot light at the steering wheel flashes in unison to inform the driver that his signal is operating.

The valve-in-head straight 8 engines have been improved in many details. On the Series 40, the motor is a 3-3-2 x 4-1-8 and develops 107 horsepower at 3400 r.p.m. On Series 60, 50 and 90 the engine is 2-7-16 by 4-1-16 and develops 120 horsepower at 3600 r.p.m. Improved timing mechanism, a new timing conditioner with new camshaft, choke, air cleaner and new transmission, all of which are fully sealed and lubricated for life; new engine mountings and other details, giving an overall smoother, quieter engine with improved economy and longer life.

Other improvements include new improvements in all models, the unit on the Series 40 being entirely new both in operation and design. It incorporates an entirely new principle of clutch design with only nine parts. A new one-piece spring is used. The spring is conical in shape and with its small retainers entirely replaces the springs, seals, levers, pins, etc. and screws in the previous assembly. This simplification results in longer life and freedom from chatter and grab. On all 1939 models the clutch driven-unit is equally strong but lighter, thus reducing inertia and providing easier, quicker and quieter shifting.

Ford V-8 Fordor Sedan



THE GRACEFUL, modern styling which marks the 1939 Ford V-8 is illustrated in the big Fordor sedan pictured above. Body and hood are one, fenders deep and massive. The Fordor sedan seats six comfortably. Interiors are well-appointed, upholstery either boucle or mohair. The front seat is full width and holds three people comfortably. Brakes are hydraulic. Either 35 or 60 horsepower engine can be specified. Body is all-steel. Equipment includes twin electric horns, dual windshield wipers, ash tray, glove compartment and rear seat arm rests. There is a large luggage compartment in the rear deck.

OPERATING COSTS DROP AS CAR DESIGN IMPROVES

When Mr. and Mrs. Jones take to the road in their modern automobile, they do not only take their children on the back seat and bags neatly packed in the trunk, their total cost of operating the car is about what Mr. Jones had to pay 25 years ago for a less on a similar trip.

The modern car, a six or eight cylinder job, accommodates six in comfort, travels at an average 40-mile speed hour after hour with few stops, for fuel and none for repairs. Mr. Jones' first car was a four-cylinder job, with a top speed of 20 miles an hour, and requiring special attention and repairs every 500 or 600 miles or so.

Today's car does not need to hunt for gas, for example. The modern machine, compared to that of just ten years ago, gives the user better air mileage at any given speed, much lower oil consumption and a big savings in the frequency and size of repair bills.

Current models can be operated at an overall cost, including all factors except expenditures for extra weight, for a little more than three cents a mile. In 1920-21 this expense was around four or five cents; this is not the clear, cold lake is a clubhouse where confections, sandwiches and all prices may be purchased virtually only about 1 cent a mile.

All prices may be purchased virtually only about 1 cent a mile. The average have shown little or no change, partly because of higher average speeds at which cars are driven, but more directly because of the high gasoline taxes, which have absorbed virtually all the savings which better methods of production, and distributing, oil and gasoline would otherwise have given to the customer.

ORCHARD LAND BECOMES DIERKE'S LAKE RESORT

What was once planned as a profitable and profitable peach orchard has now become one of the most beautiful Idaho's prime recreation spots because of nature's fantasia.

Geologists have found on the property because of water from a network of canals, but that same water which once irrigated the orchard in Magic Valley drained an orchard in a low valley paralleling the Snake river.

Seepage and waste water from upper irrigated fields sought lower levels many years ago and flooded a tilted valley five miles northwest of Twin Falls.

If you take the road to Shoshone falls and turn right halfway down the winding canyon road, you can drive to Dierke's resort, a lake surrounded by rugged canyon walls and the one-time scene of agricultural fields.

Motorboats cut through the water high above the tops of log-submerged fruit trees. The American crawl stroke propels swimmers through the water about the same distance above the trees as birds are on a tree.

On the high banks overlooking

MEET THE ECONOMY WINNER



2125 miles to the gallon! That's the startling record this beautiful new Nash Lafayette chalked up to carry off first place among cars of its class in the famous annual Gilmore Speed Economy Run. And Nash carries off honors for comfort, too... with enthusiastic praise for its silent, easy ride... its terrific 90 h.p. engine... its uncanny "Weather Eye" yet this big, roomy, 1939 Nash... which is priced way down low! Take a spin in a new Nash today!

Studebaker wins official gas-saving car contest. The new Gilmore-Yosemite Sweepstakes... open to all cars and conducted by the American Automobile Association supervision. Check a duplicate of the Studebaker winner!

REYNOLDS MOTOR

NASH FEATURES MODERN LINES

Motor Company Emphasizes Beauty of Design in 1939 Models

Style is the watchword of today's motorists. Not only are America's discriminating car buyers demanding flashing performance, mechanical excellence, economy of operation and luxurious comfort, but they are insisting upon beauty of design. The Nash is the automobile of the future.

That's why much accent has been placed on style in all the new cars of this year, according to George W. Walker, consulting designer of Nash. He says that the new cars are designed to give the driver a feeling of well-being and a sense of well-being.

In keeping with the trend toward more truly modern lines, the 1939 Nash has been styled from stern to stern, declared Walker, who collaborated with the company's engineers in giving the new car its streamlined appearance.

STEEL FLOWS IN FENDER PRESSES

Intense Pressure Shapes Cold Metal for Streamlined Automobiles

In the brief instant when jaws of a press clamp it, the cold steel used for automobile fenders flows as it stretches into deeply curved shapes.

A moment's intense pressure accomplishes the result that repeated taps of the coppersmith's hammer would take a day to accomplish. The average have shown little or no change, partly because of higher average speeds at which cars are driven, but more directly because of the high gasoline taxes, which have absorbed virtually all the savings which better methods of production, and distributing, oil and gasoline would otherwise have given to the customer.

The automobile industry is one of the few in which there has been no reduction in the amount of labor per unit of production in many years.

Educator Sees Rural Awakening

College Station, Tex., farm hearings this spring have shown a realization of the importance of agriculture, says H. H. Williamson, director of the Texas A. & M. college extension service.

"It is the first concerted improvement in agricultural morale since 1918," says Williamson, "and a surprising development in the face of low commodity prices and small cash income in store for farmers the current year."

The new trend, Williamson said, is so deep-seated he predicted it will bring a lasting change for the better in American agricultural conditions.

Buy a low cost Studebaker!



TESTS SHOW IT SAVES 10% TO 25% ON GAS!

Studebaker wins official gas-saving car contest. The new Gilmore-Yosemite Sweepstakes... open to all cars and conducted by the American Automobile Association supervision. Check a duplicate of the Studebaker winner!

Workmen you can trust build your Studebaker... They're expert craftsmen and solid citizens. Not students are employed. Working for Studebaker is an 87-year habit among South Bend's families.

Twin Falls Motor--McVeys

BUSINESS BOOMS FOR STUDEBAKER

South Bend Corporation Reports Big Increase in Sales

SOUTH BEND, Ind.—The Studebaker corporation today reported factory sales of 10,274 passenger cars and trucks in April. This figure exceeds factory sales in the second quarter of last year and is more than two and three-quarters times that reported for the same month in 1938. Factory sales for the first four months of the year were 39,720 as compared with 14,128 in the same period last year.

While the new low-priced car has been becoming available to the public during the month, retail deliveries in April amounted to 7,385 units as compared with 3,220 the year before. For the first four months of 1939, retail deliveries amounted to 29,234, a gain of 97 per cent.

"Both consumer and dealer response to the Champion line has been favorable beyond our highest expectations," said Paul G. Hoffman, president of the corporation. "In April, our first full month of production of the new models, orders ran for ahead of output. May production is already oversold. This is true despite the fact that ever since the introduction of the new models, the factory has operated under a full schedule of five and one-half days a week."

PHONE COMPANY PAID FOR ANCHOR DAMAGE

SAN FRANCISCO (U.P.)—The local telephone company has been informed that President Roosevelt has signed a bill to reimburse it \$51,323 for damage to a trans-ox cable for a sheet of copper. May production is already oversold. This is true despite the fact that ever since the introduction of the new models, the factory has operated under a full schedule of five and one-half days a week.

U.S. Quill, fishing for a lost anchor, thought it had found it and gave a good yank. But it wasn't the anchor.

STRENGTH ADDED BY STREAMLINING

Reduction of Wind Resistance Not Primary Purpose of Gentle Curves

"We sought, in designing the car, to establish a feeling of swift transition," he said, "and we strove to keep the exterior lines clean and unobscured, in keeping with the modern principle of aerodynamics. The main purpose of the gentle curves is to furnish beauty, not only in the design of the new Nash, but also in the way it moves. It is not only a functional purpose, it is a pleasure to drive a car that is so quiet and so swift."

The principles of aerodynamic streamlining, which give the most perfect results, are not only in the design of the new Nash, but also in the way it moves. It is not only a functional purpose, it is a pleasure to drive a car that is so quiet and so swift.

The smooth lines of the automobile are nice to look at and carry an easy suggestion of frictionless motion, yet in actual fact, the chief purpose of the gentle curves is to furnish strength without weight. The motive is exactly the same as that behind the stupendous wooding lines of the great steel bridges from Brooklyn to San Francisco Bay.

Smoothing the exterior of the automobile has little perceptible effect on air resistance, yet very high speeds are attained, and several changes would be made in today's body car designs if reduction of wind resistance were the primary engineering objective.

On the other hand it would take hundreds of pounds of added reinforcement to make a square-billed vehicle as strong and rattle-proof as the modern car. Keeping the weight down makes the car more efficient and economical at all speeds.

FISHING SEASON OPENS - MAY - 30

Stock-up at Dell's

The finest quality tackle your money can buy. The quickest and surest way to find out is to get a big fish hooked on the end of it and then note the way it will co-operate with you in hauling it in. It's an easy habit to do all your tackle buying at Dell's because they are open always from early in the morning until late at night.

DELL'S CIGAR STORE

THE GEAR-GRIP SAFETY TRAIL IS YOUR BEST ROUTE

Firestone CHAMPION

The Tire with the New SAFETY-LOCK CORD BODY and New GEAR-GRIP TREAD

* You're safer on any road, in any weather, in any car equipped with the new Firestone Champion Tires.

* The revolutionary new Firestone Safety-Lock cord body provides for greater strength and safety. The amazing new Gear-Grip Tread with more than 3,000 sharp-edged angles grips the road with a firm hold to prevent skidding and assures quick stops.

AS LOW AS \$1.18 PER TIRE A WEEK

ON OUR EASY BUDGET PLAN

Installation FREE

2-DAY FREE TRIAL on your own car

Firestone

FISHING CONTEST



Here's how you join!

First make a purchase at any one of the firms listed below. Then ask to sign your name to the register which will make you officially one of the contestants.

Here are the Rules

1. The largest Trout (by weight) caught in southern Idaho waters on Memorial Day (opening day) will be adjudged the winner of the first prize. Other prizes will be awarded in order of size of fish entered.
2. Any lawful bait, lure or tackle may be used.
3. Fish must be brought to Independent Meat Co. for weighing and judging by Wednesday evening, May 31.
4. Fish will be weighed "undressed" or as caught.
5. Contest lasts one day only. Catches must be made on opening day—May 30th.

Here are the Prizes

- 1ST PRIZE—\$5.00 in cash given by the Times and News.
- 2ND PRIZE—\$2.50 Sea Beast fish knife by Price Hardware.
- 3RD PRIZE—1 dozen flies from Hoover's Service Station.
- 4TH PRIZE—One half dozen hand tied flies from Duerg's and fish line from Reed's Rite-Way.
- 5TH PRIZE—A sizzling hot, large, center, T-Bone steak with all the trimmings from Buhler's Grill Cafe.

BEHOLD the Fisherman

He riseth up early in the morning and disturbeth the whole household. Mighty are his preparations! He noeth forth full of hope. When the day is far spent he returneth. Smelling of strong drink and—The truth is not in him!

But This Is The TRUTH!

George Buhler is preparing a real treat for every week-end and vacationist. Ask for the FISHERMAN'S BREAKFAST

A wholesome selection of good food that will stay with you all the next day! **25¢**

Buhler's GRILL CAFE

Tackle That'll Bring 'Em In



Granger Fly Rods
The Choice of Expert Fishermen
\$10.50 to \$13.00

Salmon Eggs
Bonn's Dry Pack Cluster 25¢ and 33¢ Per Jar
Single Eggs—10¢ Jar

Tackle Boxes
Try Automatic—Hard Baked Green Enamel, 89¢
Landing Nets 50¢ and up

Fishing Boots
Men's Extra Light Ball Band—Cleated Sole
Per Pair—**\$6.75**

Fish Baskets
Canvass Bags—98¢
Willow Baskets 98¢ to \$5.50

Fish Lines
Pflueger Non-Such Double Taper—\$6.00
Pflueger Level—\$1.50
O' Reliable—Highest Quality Silk—75¢

PRICE HARDWARE CO.



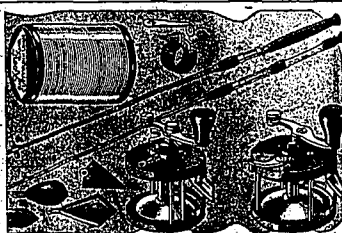
The "BIG ONES"

will come easier if you wear

Ike Walton Fishing Boots

Knee Boot \$2.75
3-4 Hips at \$4.95

Van Engelens



SAVE ON

Sears Quality Tackle

- 9' Telescope Steel Rod 98¢
- Fly Fishing Reel 79¢
- Enamel Fly Line 25¢
- Leaders, 10 yards for 10¢
- BB Shot, 3 boxes for 10¢
- Snelled Hooks, 6 for 10¢
- Salmon Eggs 10¢
- Soft Shelled Crawfish, per box 20¢

SEAR'S, ROEBUCK AND CO.

Selling FALK'S Agents

ECLIPSE Air-Cooled OUTBOARD MOTORS

BUILT BY HINDUS
Twin (5 H. P.) and Single (2 1/2 H. P.) models. Built by one of the best makers in the automotive and aviation industry.

Dealerships Open
If interested, write for full details.

D. N. Nordling Parts Co.
333 Main E.—Twin Falls

IT'S EASY TO FISH with good flies

DRY and WET FLIES TAPERED LEADERS
\$1.50 doz. Special 6 1/2-ft. 25¢
Half dozen flies to the person catching the largest fish on May 30.

A COMPLETE LINE OF ALL TROUT TACKLE **Duerig's HANDY STORE**
Next To Idaho Theatre

We Sell Fishing Tackle That's Fit for Fishing

Fishing Season Opens May 30th

WIN A PRIZE
\$19.50 Shakespeare fly rod to lucky fisherman catching heaviest trout up to Aug. 1st, 1939. The purchase of 50¢ worth or more of tackle entitles you to enter this contest.

For the person that wants a "Fisher" outfit for a (little money)

- Reel 30¢
- Line 10¢, 15¢, 25¢
- Steel Rod 65¢, 89¢
- 10 Yd. Leader 10¢
- 25 Fish Hooks 5¢

The finest assortment of automatic reels in Idaho—
Shakespeare, Ferring, Waco, Martin, Y and E.
\$2.98 to \$9.98

Waterproof umbrella tents with floor—
\$11.48 to \$19.50

Gal. Thermos Jugs \$1.25
Thermos Bottles 75¢
Camp Axes 75¢

Ladies' and men's Light 'n' Tuff fishing boots. All sizes. See our Light 'n' Tuff waders—light made.
Be Safe—With a Kapok Life Saver. We Have the DuPont Tapered Leader.

A splendid assortment of fine fly rods for the one who wants the best—Shakespeare, True Temper, Granger. Priced—**\$3.75 to \$27.50**
Other bamboo fly rods \$1.98
\$2.98, \$3.50, \$3.98, \$4.48

6 kinds of SLEEPING BAGS to choose from—everyone with sateen lining and waterproof extra heavy army duck cover **\$5.95; \$7.75 to \$15**

EVERYTHING IN FISHING TACKLE

Diamond Hdwe Co.

Good Fly Rods at Special Prices
SPECIAL NO. 1—King Fisher split bamboo fly rod. Extra tip and aluminum case. Reg. \$8.50. For only **\$6.95**
SPECIAL NO. 2—King Fisher split bamboo fly rod. Extra tip, aluminum case. Reg. \$7.50. For only **\$5.98**
(You will agree that you get more than your money's worth in these TWO SPECIALS)

Steel and Bamboo Casting Rods **\$1.35, \$1.65 to \$6.50**

The popular new Streamer Fly "Mickey Finn" and "Yellow Tiger."
Colorado Spinners—all color combinations **10¢-15¢**

Level Reels to suit every one... **75¢, \$1.00, \$1.25, \$1.50, \$2.48 to \$12.50**

CAMP REFRIGERATOR

Will keep ice 8 days and 3 nights. Don't be without one—it will pay for itself many times, by keeping your food nice and fresh.
\$2.98

COLEMAN CAMP STOVES

Cook your fish right in camp. They taste much better—we have a splendid assortment of stoves for you to choose from. Priced as low as **\$4.95**

Use a Champion outboard motor... the finest fishing motor you can buy—4 outstanding features—internal rotary valve—extra capacity tank—high compression cylinder head—positive piston type—425 H.P. N.O.A. rating 25 **\$44.95**

The Well Planned FISHING TRIP STARTS HERE!



LIVE BAIT
MINNOWS—20¢ Doz.
Montage Combination Fly Cast and Dull Pole of split bamboo **\$1.25 up**
Other Poles \$3.95

Perline Free Stripping Automatic Reels **\$4.50 to \$7.25**
Level Winding Reels **\$1.19 up**

DRIED SALMON EGGS
A dry pack that requires absolutely no more drying. 35¢ and 45¢ Jar
LINES—25¢ to \$5.00

For the Fishermen—Open All Night May 29

Get Your Fishing License and Register for the Contest

Hoover's SERVICE STATION

End of Main at Five Points East
GASOLINE and OIL
PICNIC GOODS



TROUT SEASON OPENS

And The Wise Fisherman Comes to Us

For weeks we've been preparing for you. We have everything under the sun which the trout batter needs, even a fishing license.

OUR FAMOUS LOW PRICES ARE IN EFFECT

Landing Net 39¢

KIRBY HOOKS 5¢ Tube
CARLISLE HOOKS, 1 to 2/0 5¢ doz.
SPLIT SHOT SINKERS : 5¢ Tube
SIZE THREE FISH BASKET 79¢

SPLIT BAMBOO ROD
Made of select material and beautifully finished. A real value at **\$2.59**

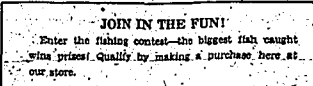
Quadruple Multiplying REELS 59¢
12 Foot Extended LINE 25¢
SHELLED HOOKS, Down 29¢
Three Foot LEADERS 8¢

OUR COMPLETE STOCK INCLUDES HUNDREDS OF TACKLE ITEMS

COME—SEE—SAVE

JOIN IN THE FUN!

Enter the fishing contest—the biggest fish caught wins prizes. Quality by making a purchase here at our store.



RITE-WAY STORE
212 Main Ave. S.

LINCOLN-ZEPHYR SETS STYLE PAGE

New V-12 Advances Modern Lines in Six Body Types

A new V-12 Lincoln-Zephyr for 1939, embodies refined styling, increased passenger comfort and important improvements including new hydraulic brakes.

It is shown in Twin Falls by the Union Motor Company.

The new Lincoln-Zephyr is available in six body types, eight modern colors and a variety of upholstery options. Body types include a sedan with four doors, a coupe, sedan with two doors, a three-passenger coupe, a town-limousine, a convertible sedan and a convertible coupe.

The modern vogue of streamlining design is advanced still further in the 1939 car. This design, first introduced to the motoring world when the Lincoln-Zephyr was first announced late in 1935. Since that time it has excited an increasingly dominant influence on motor car styling generally.

The trim new front end, the sweep of the lengthened hood as it blends into the low, roomy body and the flowing rear deck line unite to create an air of fluidity and grace.

This is accentuated by the almost vertical front profile, the vertical lines of the radiator grille and the streamlined center bars of the front bumper. Chromium-plated decorative strips relieve the severe beauty of the unbroken hoodside panel. A bright moulding sweeps back to the rear of the body.

The side view of the car has a striking, unbroken line, created by the introduction of a new treatment in door design. The doors now carry extensions at their lower edges which conceal the narrow running boards and also serve to keep them clean. The design does away with exposed running boards but retains the added floor strength and body rigidity which they provide. The passenger compartment floor is level with the running boards. This enables passengers to step easily and directly into the car. The graceful lines of the fenders blend smoothly into the body panels. Shields enclose the rear fender openings.

Unusually smart styling and careful selection of appointments and equipment add to the character of the interiors and contribute to the comfort of driver and passengers.

SWIM POOL TOPS AT NAT-SOO-PAH

Recreation Demands Filled by Nine-Year-Old Resort

A half-hour's drive from Twin Falls is Nat-Soo-Pah, named after a beautiful Indian maiden, now one of the finest swimming pools on south central Idaho.

It has become known as the perfect place for group swimming parties with plenty of facilities with a grove of trees four times as large as when the resort was first founded.

On August 7, Nat-Soo-Pah will celebrate its ninth anniversary, the day on which the pool took its final name after research by a college student had unearthed the history of the hot spring.

A beautiful daughter of an Indian chieftain called Nat-Soo-Pah which means "Living Water," when the tribe would camp by the spring to tan their hides taken on long hunts. It was the only spring between the foot of the Snake river, the students' research pointed out.

Recommended as the best route to Nat-Soo-Pah is the paved road to Hollister, turning east one-fourth mile past the town and then traveling the three miles to the resort which is approximately 17 miles from Twin Falls.

The pool is 120 by 55 feet and slopes from a two and one-half foot depth to 11 feet under the diving tower. A 20-foot tower with a diving platform at 15 feet and a low board are at the pool, with a water-ski floating ice and fun floats made of rubber, available to interested swimmers.

The picnic grounds are sanitary and commensurate with tables and benches, wood available for fires and a lawn stretching out in front dotted with locust trees. Cold drinking water is piped through the ground with ice water available at the concession stand.

The water in the swimming pool is drawn from a natural deep spring and has a temperature of 92 degrees when it comes to the surface, but is cooled as it enters the pool. The water runs continually through the pool, which is drained and cleaned once a week.

A. Neal, manager of the pool, holds recent reports from state authorities attesting to the cleanliness of the open-air pool and the quality of the artesian water.

Hot dogs, hamburgers, candy, pop and ice cream may be secured on the grounds for those who get hungry and thirsty after a refreshing swim. A life guard or caretaker is always on hand to watch activities in the pool, thus helping to avert accidents.

Judge Sends For Plumber's Tools

POPULAR BLUFF, Mo. (AP)—This is another story of the plumber and his helper who didn't bring their tools along but had them sent.

They attempted to break jail after they were charged with drunk driving—wrote a check and tore a piece of pipe off a radiator, but didn't quite make it to the great outdoors.

The next day Judge Pemberton sent out for plumber's tools. The plumber and his helper were

Nearby Resorts-Fill Needs of Vacationers

Travelogue of 34 Magic Valley Attractions Lists Mileage and Directions

Many are south central Idaho's resorts, fishing waters, scenes of phenomena and spots of rugged natural grandeur. One summer is not enough to view the scenic attractions of this section.

Within easy driving distance of Twin Falls are, however, 34 points of interest for vacationers, whether they be out-of-state travelers who wish to stay weeks or Twin Falls and south Idaho residents who seek a day of leisure.

Tabulated below are a partial list of the Magic Valley attractions. Mileage is based on a start from Twin Falls. Clip this travelogue; it will undoubtedly provide the solution to a problem of how to spend a few hours or a day.

Alluras lake—U. S. 93 over Galena summit; five and one-half miles more on 93, then turn left, go three miles.

Petli lake—U. S. 93 over summit; 11 and one-half miles more on 93; turn left one and one-quarter miles.

Petli lake ranch—U. S. 93 over summit, approximately 12 miles more on 93 to ranch entrance and general store. (Store to be enlarged this season).

Rocky Mountain club—U. S. 93 about eight miles above Petli lake turn-off; turn right at club entrance.

Little Redfish lake—U. S. 93 to approximately eight miles further than Rocky Mountain club; turn left one and one-half miles.

Big Redfish lake—U. S. 93 to Little Redfish turn-off road; go one mile past Little Redfish.

Stanley lake—U. S. 93 to six miles further than Redfish lakes turn-off road.

Ketchum and Sun Valley—U. S. 93 directly into Ketchum. Turn right one and a half miles at Lane's general store for Sun Valley.

Halley—U. S. 93.

Halley-Ketchum camping and fishing—U. S. 93 to Halley; three miles north of Halley turn left up Deer creek; Clearcreek Hot Springs; leaving Ketchum, turn left up Warm Springs; nine miles north of Ketchum turn right for north fork of Wood river, with fine camping from north fork to foot of Galena summit, including Baker creek, Easy Hot Springs, Prairie creek.

Albion country—U. S. 93 to Jerome; state 25 to Wendell, Gooding and on 25 and 46 to Fairfield; thence north to Smoky river; then west to Peaterville on south fork of Boise river; then north to Rocky bar; over steep summit 14 miles to Atlanta; then five miles down middle fork of Boise river to Queens river, termed "moose den" trout stream in Idaho.

Cape Horn country—U. S. 93 to Stanley; turn left at Stanley.

Robinson bar region—U. S. 93 to Stanley; continue about 35 miles to Robinson bar turn-off road.

Silver creek—U. S. 93 through Shoshone and over Timmerman hill; turn right on dirt-gravel road at foot of Timmerman, drive five and one-half to six miles for best fishing spots.

Craters of the Moon—U. S. 93 to Shoshone; turn off on Richfield road, state route 23; take route 22 from Carey to Craters.

City of Rocks, Oakley—U. S. 93 to Burley, then south on Oakley road to Oakley. Or route advised by Oakley Valley Chamber of Commerce about July 3 and on to Oakley, U. S. 93 to Murtatugh, cut-off to Oakley. Oakley to City of Rocks directions available at Oakley for latest information.

City of Rocks, Gooding—U. S. 93 to Jerome; state highway 25 to Gooding; local directions at Gooding.

Magle reservoir—U. S. 93 to Shoshone; continue on 93 for 26 miles, turning left at railroad tracks past "cotton-woods"; go four and one-half miles to dam itself. Or, for fishermen using boats, turn off 93 just before climbing Timmerman hill; turn left, go five and one-half miles to dam headwaters.

Mt. Harrison and Lake Cleveland (top of the mountain)—U. S. 93 to Burley; turn south to Albion. Go approximately 10 or 15 miles south of Albion; hike about half mile on good trails to lake.

Independence lakes—U. S. 93 to Burley; turn south to Albion. Or by way of Oakley—Go through Oakley and Basin to summit of Oakley-Elba road; sign indicates road to Camp Independence, and lakes are about two and one-half miles by wagon road from camp, or two miles by almost perpendicular hiking trail.

Clear lakes—U. S. 93 to Buhl; turn right at main intersection; pass Snake river bridge and turn left at Clear lakes entrance road.

Blue lakes—U. S. 93 north to turn-off at curve heading for rim-to-rim bridge; drive down Blue lakes, grade to Snake river near Blue lakes ranch; continue past ranch to lakes.

Shoshone ice caves—U. S. 93 to Shoshone; continue approximately 16 miles on 93 to ice caves turn-off road at left.

Balanced rock—U. S. 93 to Buhl; turn left at main intersection to Castelford; continue on Castelford-Roseworth road to Balanced rock cut-off trail.

Salmon dam—U. S. 93 to Rogerson; turn right on road leading to dam.

KHY's Hot Hole (Murphy's Hot Springs)—U. S. 93 to Rogerson; turn right to Salmon dam continue through Cedar creek and Three creek.

Artesian—U. S. 93 to Murtatugh; turn south seven miles. Shoshone falls—Addison three miles east to Shoshone falls; turn off; turn left, follow county road two miles to canyon road; drive down canyon.

Dierke's lakes—Shoshone falls route to half-way down canyon road; continue straight at Dierke's roadway.

Magic Hot Springs—South from Main avenue on Blue Lake boulevard south; take Salmon trail road past Ray ranch and Allendale school for 4 1/2 miles.

Nat-Soo-Pah—U. S. 93 to Hollister; quarter-mile past Hollister and three miles east.

Thousand springs park—U. S. 93 to Hagerman valley 8 1/2 miles.

Banbury—U. S. 93 through Buhl; 11 miles further on 93, then one mile on Banbury turn-off.

Mary Alice park—U. S. 93 two miles north; turn mile east on park and Shoshone falls cut-off.

assigned the job of fixing the broken radiator.

"And when you get through you can fix all the jail plumbing that needs fixing," said the Judge.

"That's your sentence."

Bees' Work Recorded

YORBA LINDA, Calif. (AP)—Bobby Smook knows exactly when his bees start gathering honey. He has a live on-delivery spring scale which shows the hive getting lighter and lighter during the winter. But when the honey starts coming in the hive gets heavier.

Strong Stuff

FAYETTEVILLE, N. C. (AP)—Outliers raising 2 1/2 million will reportedly found two cans of suspended in the boiler of the plant to give the moonshine product a head.

City's Curbing to Be 'Streamlined'

DENVER (AP)—People don't walk any more so City Engineer A. K. Vickery has decided to quit building sidewalks.

In the future, when too many people don't object, Denver's improvement districts will be constructed with a "streamlined" curbing dividing the street and its lane.

Instead of the conventional "drop side" curbing it will be a strip of concrete about two feet wide with a low center.

The low center will collect water and permit it to flow as down a stream bed. In dry weather the narrow strip can be used as a sidewalk, Vickery says nobody walks in the rain anymore; they use a car or call a taxi during storms.

The new idea will spare taxpayers the expense of constructing sidewalks.

The THREE SALES LEADERS for 1939 in Twin Falls County

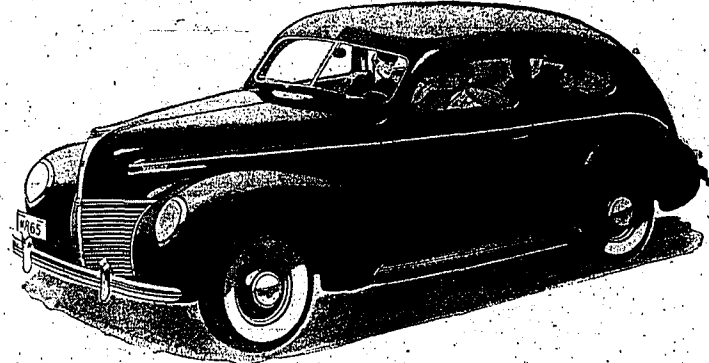
*as compiled by G. W. Shroust

PORULARITY is proof of honest value and sound performance. Sales of the new Ford V-8 in Twin Falls County are greater than the next two automobiles combined; 1939's newest automotive creation, the Mercury 8 holds a two-to-one lead over its nearest competitor in its price field, and the 1939 Lincoln-Zephyr leads in its respective price field. So if you choose one of these three, you're buying a leader... automobiles proven popular with your own neighbors!

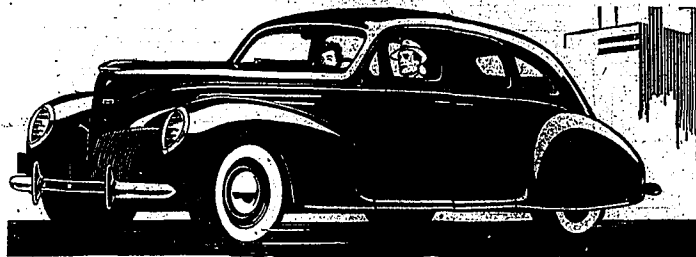
You'll want to choose one of these three leaders



The 1939 DeLuxe FORD V-8



The New 1939 MERCURY 8



The 1939 LINCOLN-ZEPHYR V-12

UNION MOTOR CO.